

<b>Estimate for construction of Public Toilet (Model No-4A) at Jagannath Mandir (Ward-05) under Chakdaha municipality</b>					
<b>No. Of seat - Male - ( W.C. -4 + Urinal -12) &amp; Female - (W.C. -4 + Urinal -5) = Total ( W.C. -8 &amp; Urinal -17)</b>					
<b>Rate As per PWD Building Works Schedule ( Volume 1) With effect from 01.11.2017</b>					
<b>Civil Works</b>					
<b>Sl. No.</b>	<b>Item Description &amp; Item No.</b>	<b>Quantity</b>	<b>Rate</b>	<b>Unit</b>	<b>Ammount</b>
1	Earth work in excavation of foundation trenches or drains, in all sorts of soil (including mixed soil but excluding laterite or sandstone) including removing, spreading or stacking the spoils within a lead of 75 m. as directed. The item includes necessary trimming the sides of trenches, levelling, dressing and ramming the bottom, bailing out water as required complete. (a) Depth of excavation not exceeding 1,500 mm. <b>PWD Building Works schedule Page - 1, Item -2.a</b>	55.20	119.27	Cum	6583.70
2	Earth work in filling in foundation trenches or plinth with good earth, in layers not exceeding 150 mm. including watering and ramming etc. layer by layer complete. (Payment to be made on the basis of measurement of finished quantity of work). (a) With earth obtained from excavation of foundation. <b>PWD Building Works schedule, Page - 1, Item -3.a</b>	36.43	77.54	Cum	2824.78
3	(A) Filling in foundation or plinth by silver sand in layers not exceeding 150 mm as directed and consolidating the same by thorough saturation with water, ramming complete including the cost of supply of sand. (payment to be made on measurement of finished quantity) <b>PWD Building Works schedule, Page - 2, Item -4.a</b>	37.82	936.21	Cum	35407.46
4	Single Brick Flat Soling of picked jhama bricks including ramming and dressing bed to proper level and filling joints with local sand. <b>PWD Building Works schedule, Page- 14, Item - 1 ( Corri. Page-01, Date-04-06-2018)</b>	144.45	361.00	Sqm	52146.45
5	Supplying and laying Polythene Sheet (150gm / sq.m.) over damp proof course or below flooring or roof terracing or in foundation or in foundation trenches. <b>PWD Building Works schedule, Page -47, Item -3</b>	45.90	24.00	Sqm	1101.60
6	Ordinary Cement concrete (mix 1:2:4) with graded stone chips (20mm nominal size) excluding shuttering and reinforcement, if any, in ground floor <b>PWD Building Works schedule, Page -23, Item -1.(b), ( Corri. Page- 09, Date-04-06-2018) Rate Analysis1 ( Corri. Page-01, Date-04-06-2018)</b>	19.32	5425.29	Cum	104816.60

7	25mm. thick damp proof course with cement concrete with stone chips (1:1.5:3) [with graded stone aggregate 10 mm nominal size] and admixture of water proofing compound as per manufacturer's specification followed by two coat of polymer based paint, (1st coat after 4 to 5 days of concrete laying and 2 nd coat just before brick masonry work) as directed (cost of water proofing compound & polymer based paint to be paid separately).( Chequering not required over concrete or painted surface). [Note: - Waterproofing as per item 9, polymer based paint as per item 8 (a) of subhead C of Section (C). <b>PWD Building Works schedule, Page -47, Item -1 (Rate Analysis)</b>	14.29	265.95	Sqm	3800.43
8	Brick work with 1st class bricks in cement mortar (1:4) (a) In foundation and plinth <b>PWD Building Works schedule, Page -15, Item-7 (Rate Analysis)</b>	11.95	5368.05	Cum	64148.20
	(b) In superstructure, ground floor	21.81	5591.05	Cum	121940.80
9	125 mm. thick brick work with 1st class bricks in cement mortar (1:4) in ground floor. <b>PWD Building Works schedule, Page - 16, Item - 16 ( Corri. Page-03, Date-04-06-2018) (Rate Analysis)</b>	100.68	728.53	Sqm	73348.40
10	Hire and labour charges for shuttering with centering and necessary staging upto 4 m using approved stout props and thick hard wood planks of approved thickness with required bracing for concrete slabs, beams and columns, lintels curved or straight including fitting, fixing and striking out after completion of works (upto roof of ground floor) (f) 25 mm to 30 mm shuttering without staging in foundation <b>PWD Building Works schedule, Page -42, Item- 36</b>	67.28	209.00	Sqm	14061.52
	(a) 25 mm to 30 mm thick wooden shuttering as per decision & direction of Engineer-In-Charge.	215.40	335.00	Sqm	72159.00
11	Ordinary Cement concrete (mix 1:1.5:3) with graded stone chips (20 mm nominal size) excluding shuttering and reinforcement,if any, in ground floor as per relevant IS codes. a) Pakur Variety /Chandil Variety <b>PWD Building Works schedule, p-26 Item 10 a (Rate Analysis)</b>	32.08	5917.81	Cum	189843.34
12	Reinforcement for reinforced concrete work in all sorts of structures including distribution bars, stirrups, binders etc initial straightening and removal of loose rust (if necessary), cutting to requisite length, hooking and bending to correct shape, placing in proper position and binding with 16 gauge black annealed wire at every intersection, complete as per drawing and direction. (a) For works in foundation and upto roof of ground floor/upto 4m. Others manufacture <b>PWD Building Works schedule, Page - 43, Item - 40.a.i.1( Corri. 10th Page-01, Date-23-01-2020) (Rate Analysis)</b>	3.391	53604.44	M.T.	181772.66

13	Neat cement punning about 1.5mm thick in wall, dado, window sill, floor etc. NOTE:Cement 0.152 cu.m per100 sq.m. <b>PWD Building Works schedule, P-192, It. No. 15 (Rate Analysis)</b>	30.00	32.75	Sqm	982.50
14	Labour for Chipping of concrete surface before taking up Plastering work. <b>PWD Building Works schedule, P-192, It-1</b>	215.40	21.00	Sqm	4523.40
15	Plaster (to wall, floor, ceiling etc.) with sand and cement mortar including rounding off or chamfering corners as directed and raking out joints including throating, nosing and drip course, scaffolding/staging where necessary (Ground floor).[Excluding cost of chipping over concrete surface] (i) With 1:6 cement mortar (c) 15 mm thick plaster <b>PWD Building Works schedule, P-189 It- No. 1 (Rate Analysis)</b>	224.17	148.53	Sqm	33295.97
	(ii) With 1:4 cement mortar (c) 10 mm thick plaster	93.67	130.53	Sqm	12226.75
16	Supplying, fitting and fixing fibre reinforced polymer (FRP) Composite door frame as per approved section with glass fibre reinforced plastic moulded skins and a special sandwich core, so as to impart monolitaheic composite structure as per approved technology of Department of Science and Technology (DST) to sasify IS: 4020 door testing performance criteria.. (i) 66mm x 90mm <b>PWD Building Works schedule, P-115, It - 3 (i)</b>	81.50	497.00	Mtr	40505.50
17	Supplying, fitting & fixing fibre reinforced polymer (FRP) Composite door shutters as per approved design with glass fibre reinforced plastic moulded skins and a special sandwich core, so as to impart monolitaheic composite structure as per approved technology of Department of Science and Technology (DST) to satisfy IS:4020 door testing performance criteria. In ground floor. ii) 25 mm thick <b>PWD Building Works schedule, P-125, It- 14(ii)</b>	21.57	2581.00	Sqm	55672.17
18	Anodised aluminium barrel / tower / socket bolt (full covered) of approved manufactured from extruded section conforming to I.S. 204/74 fitted and fixed with cadmium plated screws . (vii) 225mm long x 10mm dia. bolt. <b>PWD Building Works schedule, P-144, It No. 26 (vii)</b>	17.00	84.00	Each	1428.00
19	Iron butt hinges of approved quality fitted and fixed with steel screws, with ISI mark. (viii) 100mm X 75mm X 3.50mm. <b>PWD Building Works schedule, P-140, It No. -5 (viii)</b>	51.00	66.00	Each	3366.00
20	Anodised aluminium decorative handle (hexagonal / fluted) of approed quality fitted and fixed complete. (i) 150mm plate x 10mm dia rod x 12mm hexagonal/fluted. <b>PWD Building Works schedule, Page -146 . Item no-31,(i)</b>	34.00	87.00	Each	2958.00

21	Iron hasp bolt of approved quality fitted and fixed complete (oxidised) with 16mm dia rod with concrete bolt and round fitting. .b)250mm long. <b>PWD Building Works schedule, Page -141 . Item no-10 b)</b>	17.00	159.00	Each	2703.00
22	(A) Supplying Aluminium casted body hydraulic door closer as per I.S.I. <b>SOR, PWD, P- 244, I - 13(a)</b>	17.00	635.00	Each	10795.00
23	Rendering the Surface of walls and ceiling with White Cement base WATER PROOF wall putty of approved make & brand.(1.5 mm thick) In Ground Floor <b>PWD Building Works schedule, PWD, P- 198, I - 5</b>	312.30	122.00	Sqm	38100.60
24	Acrylic Distemper to interior wall, ceiling with a coat of solvent based interior grade acrylic primer (as per manufacturer's specification) including cleaning and smoothening of surface. Two Coats <b>PWD Building Works schedule, Page -196 , Item no- 10 .</b>	312.30	70.00	Sqm	21861.00
25	Applying exterior grade Acrylic Primer of approved quality and brand on plastered or concrete surface old or new surface to receive Decorative Textured (Martt Finish) or Smooth Finish Acrylic exterior emulsion paint including scraping and preparing the surface thoroughly , complete as per manufacturer's specification and as per direction of the EIC in Ground Floor (b) two coats. <b>PWD Building Works schedule, Page -196 , Item no- 8(b)</b>	315.00	45.10	m2	14206.50
26	Protective and Decorative Acrylic Exterior emulsion paint of approved quality, as per manufacturer's specification and as per dircition of EIC to be applied overf Acrylic primer as required. The rate includes cost of materials, labour, scaffolding and all incidental charges but excluding the cost of primer in ground floor (two coats)(a) normal acrylic emulsion. <b>PWD Building Works schedule, Page -197 , Item no- 17(a)</b>	315.00	67.00	m2	21105.00
27	Collapsible gate with 40mm x 40mm x 6mm Tee as top and bottom guide rail, 20mm x 10mm x 2mm vertical channels 100mm apart in fully stretched position 20mm x 5mm M.S. flats as collapsible bracings properly rivetted and washered including 38mm steel rollers including locking arrangements, fitted and fixed in position with lugs set in cement concrete and including cutting necessary holes, chasing etc. in walls, floors etc. and making good damages complete. In ground floor. <b>PWD Building Works schedule, P-106 Item-18 (3rd Corrigendam Page No 92)</b>	5.25	4330.00	Sqm	22732.50
28	Supplying, fitting and fixing Stainless Steel railing consist of 38mm dia and 900mm height vertical balustrade at every two alternative steps, 50mm dia top rail, 3 (three) nos 19mm dia horizontal Strainless steel pipe and base/cover plate with Strainless Steel GRADE 304 containing 7.5% nickle (Interior Grade) Brushed/Mat finish, complete as per direction of the Engineer-in-charge. Weight of Strainless Steel railing per metre 6.5 Kg (approx) <b>PWD Building Works schedule, P-122 Item-22</b>	5.00	9077.00	meter	45385.00

29	<p>Supplying, fitting and fixing windows and ventilators with or without integrated grills conforming to IS1038-1975 and manufactured from rolled steel sections conforming to IS7452-1974 with non-friction projecting type, box type hinges, glazing clips, lugs locking bracket, handle plate etc, including hoisting in position, straightening if required, fixing lugs in cement concrete(1:2:4) with stone chips 20mm down cutting hole sand mending good damages to match with existing surface complete in all respect excluding glazing.</p> <p>b) Openable steel windows as per IS sizes with side hung shutters and horizontal glazing bars. [The extra rate admissible for the openable portion only]</p> <p><b>PWD Building Works schedule, P-107 Item-20 (3rd Corri. Page-91, Date-04-06-2018 )</b></p>	7.50	1904.00	Sqm	14280.00
	(viii) M.S. integrated grill as per approved design integrated with steel window or ventilator, joints continuously welded with M.S. flats and bars	187.000	79.00	kg	14773.00
30	<p>Supplying bubble free float glass of approved make and brand conforming to IS: 2835-1987.</p> <p>iv) 5mm thick coloured / tinted / smoke glass.</p> <p><b>PWD Building Works schedule, P-243, I-9</b></p>	7.50	585.00	Sq.M.	4387.50
31	<p>a) Priming one coat on steel or other metal surface with synthetic oil bound primer of approved quality including smoothening surfaces by sand papering etc.</p> <p><b>PWD Building Works schedule, P-200 Item-1(a)</b></p>	78.63	29.00	Sqm	2280.27
32	<p>(A) Painting with best quality synthetic enamel paint of approved make and brand including smoothening surface by sand papering etc. including using of approved putty etc. on the surface, if necessary :</p> <p>(b) On steel or other metal surface :</p> <p>(iv) Two coats (with any shade except white)</p> <p><b>PWD Building Works schedule, P-200 Item-2(b)(iv)</b></p>	78.63	79.00	Sqm	6211.77
33	<p>Supplying, fitting&amp;fixing1st quality Ceramic tiles inwalls and floors tomatchwith theexistingwork&amp;4nos. of key stones (10mm) fixedwitharalditeat thebackof each tile&amp; finishing the jointswithwhite cementmixedwithcolouring oxide if required to match the colour of tiles including rougheningof concrete surface, if necessaryorby synthetic adhesive &amp; grout materials etc.</p> <p>(A) WithSandCementMortar (1:4) 20mmthick&amp;2mmthick cementslurryatbacksideof tilesusingcement@2.91Kg/Sq.m &amp; joint filling using white cement slurry @ 0.20kg/Sq.m.</p> <p>(i) Coloured decorative</p> <p><b>PWD Building Works schedule, page-64, Item:35.(A.) (b).(i) ( 3rd Corrigendam ,Page 36)</b></p>	86.25	920.00	Sqm	79350.00
	<p>B) Wall of each tile above 0.09 Sq.m than Coloured decorative including white</p> <p>b) Area ii) Other</p>	302.00	1047.00	Sqm	316194.00

34	<p>Supplying, fitting &amp; fixing granite slabs 15mm to 18 mm. thick with uniform texture &amp; without decorative veins in columns, wall, facia, rise etc. with 15 mm thick [avg] cement mortar (1:2) including making suitable arrangements to hold the stones properly by brass / copper hooks including pointing in cement mortar (1:2) (1 white cement : 2 marble dust) with admixture of pigment matching the stone shades all complete as per direction of the Engineer-in-charge including cost of all materials, labours, scaffolding, staging, curing and roughening of concrete surface complete.</p> <p>[Using cement slurry at back side of granite @ 4.4 kg/sq.m &amp; white cement slurry for joint filling @ 1.8 kg/sq.m]</p> <p>In ground floor</p> <p>(a) Area of each Granite slab 0.6 to 1.0 Square meter.</p> <p><b>PWD Building Works schedule, page-63, Item:33(a)- ( 3rd</b></p>	3.83	2774.00	Sqm	10624.42
35	<p>Supplying Fitting and Fixing Black Stone slab used in kitchen slab, alcove wardrobe etc. laid and joined with adhesive cement mortar (1:2) including grinding or polishing as per direction of EIC in Ground Floor</p> <p>(a) Slab thickness 20 - 25 mm</p> <p><b>PWD S&amp;P Schedule, page-53, item no -17 (a)</b></p>	10.32	642.00	m2	6625.44
36	<p>Painting block letters or digits in Black Japan or any approved paint as per direction.</p> <p>e) Size above 7.5 cm. and upto 10 cm.</p> <p><b>PWD Building Works schedule, P-268, It-17(e)</b></p>	650.00	12.00	Each	7800.00
37	<p>Maintenance of trees for one year (Avenue Plants) including watering, trimming, manuring, spraying insecticide and guarding as required. This includes supply of labour, tools &amp; plants including materials.</p> <p><b>PWD Building Works schedule, Page -260, It- 8</b></p>	12.00	477.00	Each Per Year	5724.00
38	<p>Supplying and Planting of different plant / trees ( Supplying well grown plants bushy and healthy, minimum height as specified i.e. exposed height including all leads &amp; lift, carriage, handling, manuring, applying pesticide and fertilizer etc. .</p> <p>i) Furcaria variegated 10-12 leaves in height 20-30cm in earthen pots of size 25cm.</p> <p><b>PWD Building Works schedule, Page -261, It- 9 (i)</b></p>	12	162.00	Each	1944.00
39	<p>x) Ficus blakii (F. Vivicon) well branched (Bushy) of height 120cm - 135 cm in earthen pot of size 30cm.</p> <p><b>PWD Building Works schedule, Page -261, It- 9</b></p>	6	187.00	Each	1122.00
	<p>xxvi) Areca Palm 4 - 5 suckers of height 90 cm to 105 cm in earthen pots of size 25 cm.</p>	6	127.00	Each	762.00
<b>SANITARY AND PLUMBING WORKS</b>					
40	<p>Supplying, fitting and fixing Anglo-Indian W.C. in white glazed vitreous china ware of approved make complete in position with necessary bolts, nuts etc.</p> <p>a) With 'P' trap (with vent)</p> <p><b>PWD S&amp;P Schedule, page-79, item no -3 (a)</b></p>	6	3104.00	Each	18624.00

41	Supplying, fitting and fixing Closet seat of approved make with lid and C.P. hinges, rubber buffer and brass screws complete .(b) Anglo Indian (i) Plastic (hallow type) White <b>PWD S&amp;P Schedule, page-81,item no 10.b.i</b>	6	380.00	Each	2280.00
42	Supplying, fitting and fixing Shallow water closet Indian pattern (I.P.W.C.) of approved make in white vitreous chinaware in position (excluding cost of concrete for fixing). (i) 580 mm long <b>PWD S&amp;P Schedule, page-79,item no -1 (i)</b>	2	973.00	Each	1946.00
43	Supplying, fitting and fixing Flat back urinal (half stall urinal) in white vitreous chinaware of approved make in position with brass screws on 75 mm X 75 mm X 75 mm wooden blocks complete (ii) 470 mm X 280 mm X 340 mm <b>PWD S&amp;P Schedule, page.80,item no-6/(ii)</b>	12	945.00	Each	11340.00
44	Supplying, fitting and fixing Squating plate with integral flushing in white vitreous chinaware of approved make in cement concrete (6:3:1) with jhama chips complete. (Payment of concrete will be paid seperately). (i) 450 mm X 350 mm <b>PWD S&amp;P Schedule, (P - 80, Item. No. - 7 ,</b>	5	881.00	Each	4405.00
45	Supplying, fitting and fixing 10 litre P.V.C. low-down cistern conforming to I.S. specification with P.V.C. fittings complete,C.I. brackets including two coats of painting to bracket etc. <b>PWD S&amp;P Schedule, Page No.-36 Item No.-2,</b>	8	1015.00	Nos	8120.00
46	Supplying,fitting and fixing 32 mm dia. Flush Pipe of approved make with necessary fixing materials and clamps complete. i) Polythene Flush Pipe <b>PWD S&amp;P Schedule, Page no 81. Item no. 11(i)</b>	8	155.00	Each	1240.00
47	Supplying, fitting and fixing urinal flush pipe fittings of approved brand. (a) C.P. urinal flush pipe fittings range of one <b>PWD S&amp;P Schedule, S.P.81,item-12/a</b>	<del>13</del> 12	414.00	Each	<del>5382.00</del> 4968.00
48	Supplying, fitting and fixing 18 mm thick marble partition slab with chawk doongri marbel square cut, both sides polished with two front corners rounded and edges polished. <b>Sanitary and plumbing work schedule P-81, It-13</b>	7.92	1426.00	Sqm	11293.92
49	Supplying, fitting and fixing white vitreous china best quality approved make wash basin with C.I. brackets on 75 mm X 75 mm wooden blocks, C.P. waste fittings of 32 mm dia., mending good all damages and painting the brackets with two coats of approved paint. (ii) 550 mm X 400 mm size <b>PWD S&amp;P Schedule, P-41, It 2 (ii)</b>	8	2208.00	Each	17664.00
50	Supplying,fitting and fixing approved brand P.V.C. CONNECTOR white flexible, with both ends coupling with heavy brass C.P. nut, 15 mm dia., (iii) 600 mm long <b>PWD S&amp;P Schedule, Page No.-43 Item No.-9-iii</b>	16	107.00	Each	1712.00

51	Supplying, fitting and fixing approved brand 32 mm dia. P.V.C. waste pipe, with PVC coupling at one end fitted with necessary clamps. (iv) 1050 mm long each <b>PWD S&amp;P Schedule, Page No.-43 Item No. 10-iv</b>	18	91.00	Each	1638.00
52	(f) Hand Shower(Health Faucet) with 1mtr Flexible Tube with Wall Hook(Equivalent to Code No.573 & Model -ALLIED of Jaquar or similar). <b>PWD S&amp;P Schedule, Page No.-3 Item No.- 3 f,</b>	<del>8</del> 6	1251.00	Each	<del>10008.00</del> 7506.00
53	(a) (i) Chromium plated Bib Cock short body (Equivalent to Code No. 511 & Model - Tropical / Sumthing Special of ESSCO or similar brand). <b>PWD S&amp;P Schedule, Page No.-6 Item No.-7-a-i</b>	15	539.00	Each	8085.00
54	(b) (i) Chromium plated Stop Cock (Equivalent to Code No. 513(A) & 513(B) & Model - Tropical / Sumthing Special of ESSCO or similar <b>PWD S&amp;P Schedule, Page No.-6 Item No.-7-b-i</b>	4	493.00	Each	1972.00
55	Supplying, fitting and fixing shower of approved brand and make. (ii) Chromium plated round shower with revolving joint (Equivalent to Code No. 541(N) & Model - Tropical / Sumthing Special of ESSCO or similar brand). <b>PWD S&amp;P Schedule, Page No.-3 Item No.-3- a-ii</b>	4	360.00	Each	1440.00
56	(iii) Chromium plated shower arm 240 mm long (Equivalent to Code No. 536(A) & Model - Tropical / Sumthing Special of ESSCO or similar brand). <b>Page No.-3 Item No.-3-a-(iii), PWD,VOL-II , 2017-18</b>	4	309.00	Each	1236.00
57	Chromium plated angular Stop Cock with wall flange (Equivalent to Code No. 5053 & Model - Florentine of Jaquar or similar brand). <b>PWD S&amp;P Schedule, Page No.-6 Item No.-7-d-i,</b>	28	815.00	Each	22820.00
58	Supplying, fitting and fixing PVC pipes of approved make of Schedule 80 (medium duty) conforming to ASTM D - 1785 and threaded to match with GI Pipes as per IS : 1239 (Part - I), with all necessary accessories, specials viz. socket, bend, tee, union, cross, elbo, nipple, long screw, reducing socket, reducing tee, short piece etc. fitted with holder bats clamps, including cutting pipes, making threads, fitting, fixing etc. complete in all respect including cost of all necessary fittings as required, jointing materials and two coats of painting with approved paint in any position above ground. (Payment will be made on the centre line measurements of total pipe line including all specials. No separate payment will be made for accessories, specials. Payment for painting will be made separately) (a) For Exposed Work PVC Pipes, 25 mm <b>Page No.-12 Item No.-19-i(a), PWD,VOL-II , 2017-18</b>	36	177.00	Mtr	6372.00
59	(a) (a) For Exposed Work PVC Pipes, 15 mm <b>Page No.-12 Item No.-19-i(a), PWD,VOL-II , 2017-18</b>	21	101.00	Mtr	2121.00

55	(b) For Concealed Work PVC Pipes, 15 mm	21	137.00	Mtr	2877.00
60	Supplying and fitting fixing of gunmetal wheel valve of approved brand and make tested to 21 Kg per sq. cm. 25 mm dia(E5) PWD S&P Schedule, P-5 It-5,vii),	3	778.00	Each	2334.00
61	Supplying P.V.C. water storage tank of approved quality with closed top with lid (Black) - Multilayer (b) 1000 litre capacity PWD S&P Schedule, page.37,item no-6 (b)	2	5128.00	Each	10256.00
62	Supplying P.V.C. water storage tank of approved quality with closed top with lid (Black) - Multilayer (c) 2000 litre capacity PWD S&P Schedule, page.37,item no-6 (c)	2.00	10434.00	Each	20868.00
63	Labour for hoisting plastic water storage tank. (i) Upto 1500 litre capacity. (a) Upto 1st story from G.L. PWD S&P Schedule, page.37,item no-10 (i)(a)	4	96.00	Each	384.00
64	Labour for punching hole in plastic water storage tank upto 50 mm dia. PWD S&P Schedule, (P. No. - 38, Item. No. - 13	4	19.00	Each	76.00
65	Supply of UPVC pipes (B Type) & fittings conforming to IS-13592-1992.(A) (i) Single Socketed 3 Meter Length, (b) 110 mm PWD S&P Schedule, Page No.-68 Item No. 23,(A)(i)(b)	36	292.00	Mtr	10512.00
	(B) Fittings (i) Coupler, (b) 110 mm	18	85.00	Each	1530.00
	(ii) Plain Tee, (b) 110 mm	15	85.00	Each	1275.00
	(iii) Door Tee, (b) 110 mm	10	195.00	Each	1950.00
	ix) Bend 45°, (b) 110 mm	10	89.00	Each	890.00
	xi) Door Bend (T.S.), (b) 110 mm	9	147.00	Each	1323.00
	xvi) Pipe Clip, (b) 110 mm	30	21.00	Each	630.00
	xvii) W.C. Connector (150 mm long) 125 X 110(W/WC Ring) 75 mm	8	142.00	Each	1136.00
	Li) Nahani Trap, 90 m	14	144.00	Each	2016.00
	L) Rubber Ring, (b) 110 mm	30	17.00	Each	510.00
	C)Rubber Lubricant 500 ML	5	187.00	500 ML	935.00
	D)Solvent Cement 250 ML	5	103.00	250 ML	515.00


66	Labour for fitting and fixing U.P.V.C. pipes for above ground work including cost of jointing materials etc. fitting and fixing all necessary specials, cutting pipes, cutting holes in total pipeline including specials. (B) Under ground, (ii) 110 mm dia. <b>PWD S&amp;P Schedule, (P. - 74, Item. No. - 24 (B))</b>	36	84.00	Mtr	3024.00
67	Supplying, fitting & fixing UPVC pipes A- Type and fittings conforming to IS:13592-1992 with all necessary clamps nails, including making holes in walls, floor etc. cutting trenches in any soil through masonry concrete structures etc if necessary and mending good damages including joining with jointing materials (Spun Yarn, Valamoid/Bitumen/M-Seal etc) complete. A) UPVC Pipes: (i) 75 mm. Dia. <b>(P. - 212, Item. No. - 21 (A)(i) , (B),(c),(i) &amp; (B), (d),(i), Pwd volume-ii, 2017)</b>	12	188.00	Mtr	2256.00
	B) UPVC Fittings: c) Bend 87.5 degree (i) 75 mm. Dia.	4	84.00	Mtr	336.00
	B) UPVC Fittings: d) Shoe (i) 75 mm. Dia.	4	78.00	Mtr	312.00
68	Constructing Inspection pit of inside measurement 600mm X 600mm X upto 600mm (depth) with 250 mm thick 1st. class brick work in cement mortar (1:4) on all sides, bottom of the pit consisting of 100 mm thick cement concrete (1:3:6) with stone chips over a layer of jhama brick flat soling, 15 mm thick (1:4) cement plaster to inside walls and out-side walls upto G.L. and 20 mm. thick (1:4) plaster to bottom of the pit, providing necessary invert with cement concrete (1:3:6) with stone chips as per direction, neat cement finishing to entire internal surfaces, top of the pit covered with 100 mm thick R.C.C. slab (1:1.5:3) with stone chips and necessary reinforcements upto 1% and shuttering including 6 mm thick cement plaster (1:4) in all external surfaces of the slab and one 560 mm dia. R.C.C. manhole cover of approved make supplied, fitted and fixed in the slab with necessary fittings, necessary earthwork in excavation in all sorts of soil, filling sides of the pit with earth and removing spoils after work complete in all respect with all costs of labour and materials. i) With Pakur variety (Other manufacturing). <b>PWD S&amp;P Schedule, S.P.87,Item No-1/(i), 7th Corrigenda Volume ii</b>	6.00	7234.00	Each	43404.00

69	<p>Construction of septic tank of different capacities as per approved drawing with 1st class brick work in cement mortar (1:4) including two 560 mm dia. R.C.C. manhole cover (heavy type) of approved make supplied, fitted and fixed in the 100mm thick R.C.C (1:1.5:3) top slab with necessary fittings, 20mm thick cement plaster (4 : 1) with neat cement finish to the internal surfaces and 15 mm thick cement plaster (4 : 1) to outside wall upto 200 mm below G.L floor finished with 25 mm thick grey artificial stone over 100 mm thick R.C.C(1:1.5:3) bottom slab including supplying, fitting and fixing all necessary specials, fittings, S.W. tees, C.I. foot rest etc. including excavation earth in all sorts of soil, shoring, bailing out and pumping out water as necessary, ramming, dressing the bed and refilling the sides of the tanks with earth, removing spoils, filling up the chamber with clear water, removing foreign materials from the chamber and including constructing attached inspection pit as per approved drawing and connecting all necessary pipes, joints etc. with internal plaster work and artificial stone flooring is to be done with admixture of water proofing compound @ 0.5% by weight of cement with all costs of labour and materials.</p> <p>(iv) For 30 users A) With Pakur variety. (Others manufacturing) PWD S&amp;P Schedule, S.P.88, Item No-3(iv)(A) 7th Corrigenda Volume ii</p>	1	<del>90678.00</del> 62590-00	Each	<del>90678.00</del> 62590-00
70	<p>Construction of circular soak well 2.5 metre deep in all types of sandy soils with dry brick work upto 1.6 metre from the bottom having 150 mm intermediate cement brick work (1:4) band all round and cement brick work (1:4) upto 0.90 metre from top with 20mm thick cement plastering (1:4) to inside face upto the depth of cement brick work, 15mm thick cement plaster (1:4) on outer face from top of the well upto G.L. and 6 mm thick cement plaster (1:4) on top of the R.C.C. cover slab including filling bottom 1.00 metre of inside of the well with brick metal (50 mm to 63 mm size) including R.C.C. cover slab of 100 mm thick with cement conc (1:1.5:3) with stone chips with necessary reinforcement and shuttering including one 560 mm dia. R.C.C. manhole cover (heavy type) of approved make supplied, fitted and fixed in the cover slab with necessary fittings, making necessary arrangements for pipe connections, excavation of well including shoring, dewatering and removing the excess earth from the premises as per direction complete in all respect with all costs of labour and materials. With 250 mm thick dry brick work and 250 mm thick cement brick work (1:6) and 1.00m inside dia.</p> <p>(Others manufacturing) PWD S&amp;P Schedule, P.89, Item No-4 7th Corrigenda Volume ii</p>	1.00	16601.00	Each	16601.00
71	<p>Supplying, fitting and fixing towel rail with two brackets. (a) C.P. over brass (ii) 25 mm dia. and 600 mm long PWD S&amp;P Schedule, p No 82 I No- 22 (a)(ii)</p>	17	430.00	Each	7310.00
72	<p>Supplying, fitting and fixing cast iron raised rain proof tank cover 500 mm dia. with locking arrangements (weighing not less than 12 kg). PWD S&amp;P Schedule, . page-37, item no -8</p>	3	1263.00	Each	3789.00

72	Supplying, fitting and fixing bevelled edged mirror 5.5 mm thick silver red as per I.S. 3438 / 1965 together with brass C.P. hinges. (ii) 600 mm X 450 mm PWD S&P Schedule, P-81, It-15(ii)	8	484.00	Each	3872.00
74	Supplying, fitting and fixing soap holder. (b) Fibre glass Sanitary and plumbing work schedule P-82, It-18(b)	20	58.00	Each	1160.00
75	Supplying, fitting and fixing porcelain toilet paper holder of approved make with wooden spindle as necessary. (i) Roll type size 250 mm X 125 mm (A5) Sanitary & Plumbing works p No 83 I No- 23 9i)	8	293.00	Each	2344.00
76	Supplying, fitting and fixing glass shelf with aluminium guard rails. (a) Ordinary type with 5.5 mm sheet glass (i) 450 mm X 125 mm Sanitary and plumbing work schedule P-81, It-16(a)(i)	16	341.00	Each	5456.00
<b>Total</b>					2108138.15
<b>Add G.S.T. @</b>					379464.87
<b>Cost Of Civil Work</b>					2487603.02
<b>Add L.W.C. @</b>					24876.03
<b>Add Contengency @3%</b>					74628.09
<b>Total Amount Including Labour.Welfare.essC. and contengency</b>					2587107.14
<b>Say Rs.</b>					2587107.00
In Word (2587107.00) : Rupees Twenty Five Lakh Eighty Seven Thousand One Hundred Seven only					

forty nine

fifty nine only

  
23.7.25

Sub-Assistant Engineer

Chakdaha Municipality

**Sub-Assistant Engineer**  
Chakdaha Municipality  
Chakdaha, Nadia.

  
23/7/25

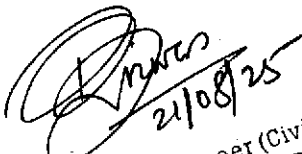
Executive Officer

Chakdaha Municipality  
**Executive Officer**  
Chakdaha Municipality  
Chakdaha, Nadia.



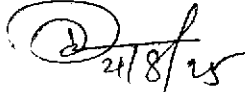
Chairman

Chakdaha Municipality  
**Chairman**  
Chakdaha Municipality  
Chakdaha, Nadia.

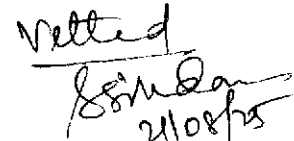
  
21/08/25

Junior Engineer (Civil)  
Nadia Division, M.E. Dte.  
Deptt. of UD & MA  
Govt. of West Bengal

May be vetted

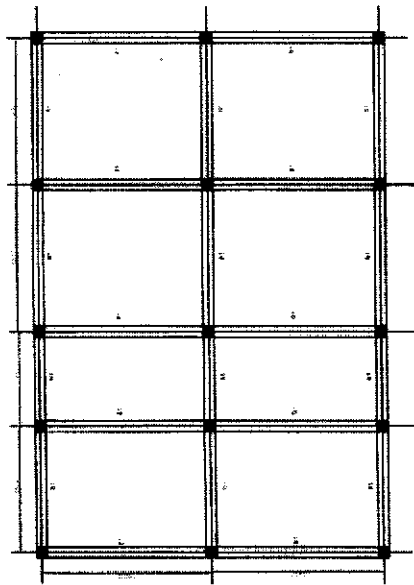
  
21/8/25

Assistant Engineer (Civil)  
Nadia Division, M.E. Dte.  
Deptt. of UD & MA  
Govt. of West Bengal

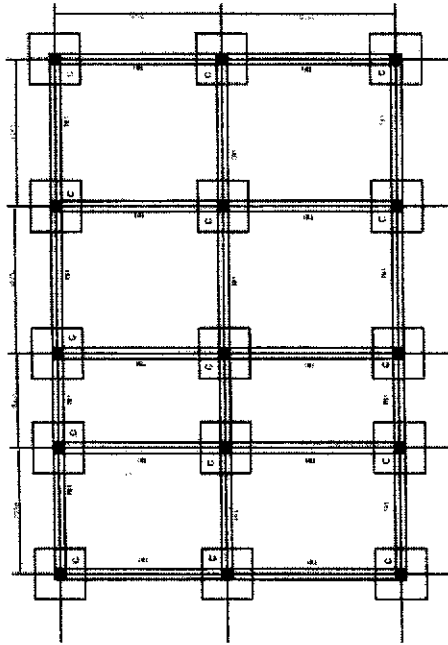
  
21/08/25

Executive Engineer  
Nadia Division M. E. Dte.  
Deptt. of UD & MA  
Govt. Of West Bengal

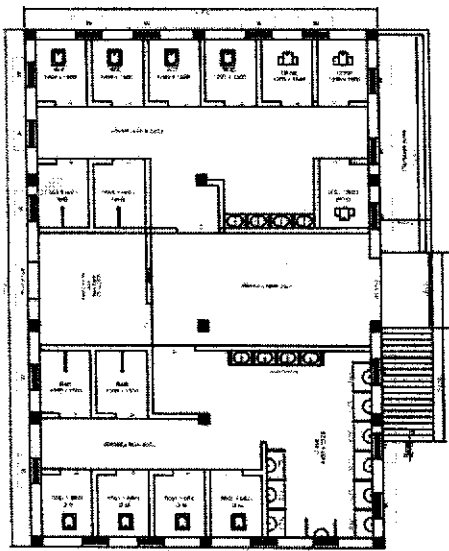
169/44



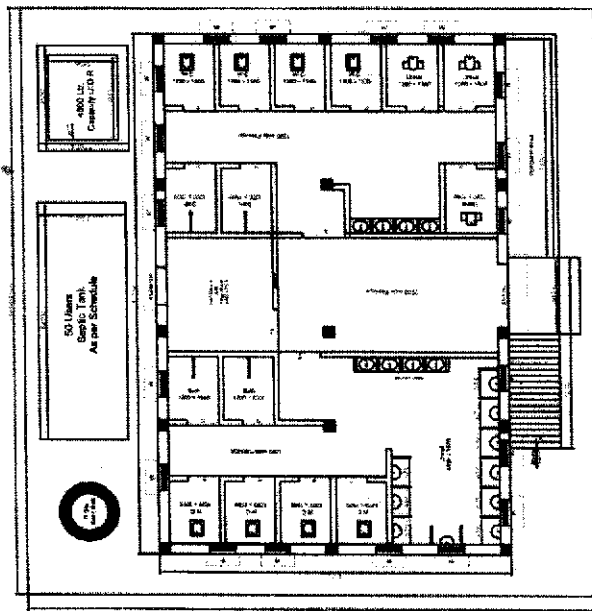
R/R Beam Depths



Foundation & R/R Beam Details



Ground Floor Plan of Plan 4A For PT  
M(1)-1(1)(1)-(3) - 8 water



Sample Site Plan of Plan 4A For PT  
M(1)-1(1)-(1)-(3) - 8 water

*Sarvag*  
28.7.25  
Sub-Assistant Engineer  
Chakdaha Municipality  
Chakdaha, Nadia.

*23/7/25*  
Executive Officer  
Chakdaha Municipality  
Chakdaha, Nadia.

*Adar*  
Chairman  
Chakdaha Municipality  
Chakdaha, Nadia.