

**Civil & Sanitary Work Estimate For Construction of the Community Toilet Block
at Kacharivita, Nilima Sanyalpara Ward no 9 within Tarakeswar Municipality**

ⓕ

No. Of seat - Male - (W.C. -1 + Urinal -2) & Female - (W.C. -2 + Urinal -1) = Total (W.C. -3 & Urinal -3)

Rate As per PWD Building Works Schedule (Volume 1) With effect from 01.11.2017

Sl. No.	Item Description & Item No.							Quantity	Rate	Unit	Ammount
	Details	Side	No.	L	B	H	QNTY.				
1	Earth work in excavation of foundation trenches or drains, in all sorts of soil (including mixed soil but excluding laterite or sandstone) including removing, spreading or stacking the spoils within a lead of 75 m. as directed. The item includes necessary trimming the sides of trenches, levelling, dressing and ramming the bottom, bailing out water as required complete. (a) Depth of excavation not exceeding 1,500 mm. PWD Building Works schedule Page - 1, Item -2.a							14.00	11927.00	%Cum	1669.78
	Column		6	1.200	1.2	0.9	7.780				
	Tie Beam		1	11.65	0.35	0.375	1.530				
	Reservior		1	2.3	1.7	1.2	4.690				
	14.000										
2	Single Brick Flat Soling of picked jhama bricks including ramming and dressing bed to proper level and filling joints with local sand. PWD Building Works schedule, Page- 14, Item - 1 (Corri. Page-01, Date-04-06-2018)							23.09	357.00	Sqm	8243.13
	Column		6	1.200	1.2		8.640				
	Tie Beam		1	13.25	0.25		3.310				
	Parti beam		2	1.35	0.125		0.340				
	Floor		1	1.5	1.35		2.030				
	Floor		3	1.2	1.35		4.860				
	Reservior		1	2.3	1.7		3.910				
	23.090										
3	Supplying and laying Polythene Sheet (150gm / sq.m.) over damp proof course or below flooring or roof terracing or in foundation or in foundation trenches. PWD Building Works schedule, Page -47, Item -3							21.75	24.00	Sqm	522.00
	Open Space		1	7.5	1.5		11.250				
	Approch Road		1	7	1.5		10.500				
	21.750										
4	Cement concrete with graded jhama khoa (30 mm size) excluding shuttering In ground floor and foundation. (a) 1:3:6 proportion. PWD Building Works schedule, Page -23, Item -B.1.a, (Corri. Page-09, Date-04-06-2018) Rate Analysis							4.12	4783.42	Cum	19707.69
	Column		6	1.200	1.2	0.1	0.860				
	Floor		1	1.5	1.35	0.1	0.200				
	Floor		3	1.2	1.35	0.1	0.490				
	Reservior		1	2.3	1.7	0.1	0.390				
	Open Space		1	7.5	1.5	0.1	1.130				
	Approch Road		1	7	1.5	0.1	1.050				
	4.120										

5	25mm. thick damp proof course with cement concrete with stone chips (1:1.5:3) [with graded stone aggregate 10 mm nominal size] and admixture of water proofing compound as per manufacturer's specification followed by two coat of polymer based paint, (1st coat after 4 to 5 days of concrete laying and 2 nd coat just before brick masonry work) as directed (cost of water proofing compound & polymer based paint to be paid separately).(Chequering not required over concrete or painted surface). [Note: Waterproofing as per item 9, polymer based paint as per item 8 (a) of subhead C of Section (C). PWD Building Works schedule, Page -47, Item -1 (Rate Analysis)	1.68	184.11	Sqm	309.30
	1 13.45 0.125 1.680				
6	Brick work with 1st class bricks in cement mortar (1:4) (a) In foundation and plinth PWD Building Works schedule, Page -15, Item-7.a (Rate Analysis)	4.38	5246.67	Cum	22980.41
	GL 2 PL 1 13.25 0.250 0.450 1.490				
	Front Stair 1 5.725 0.25 0.3 0.430				
	1 5.725 0.25 0.15 0.210				
	Reservior 1 7.5 0.25 1.2 2.250				
	4.380				
7	125 mm. thick brick work with 1st class bricks in cement mortar (1:4) in ground floor. PWD Building Works schedule, Page - 16, Item - 16 (Corri. Page-03, Date-04-06-2018) (Rate Analysis)	37.63	714.46	Sqm	26885.13
	Wall 1 15.950 2.375 37.880				
	2 1.350 0.175 0.470				
	Parapet 1 18.300 0.3 5.490				
	Less Door -4 0.750 1.8 -5.400				
	Less Window -6 0.450 0.3 -0.810				
	37.630				
8	Earth work in filling in foundation trenches or plinth with good earth, in layers not exceeding 150 mm. including watering and ramming etc. layer by layer complete. (Payment to be made on the basis of measurement of finished quantity of work). (a) With earth obtained from excavation of foundation. PWD Building Works schedule, Page - 1, Item -3.a	9.24	7754.00	%Cum	716.47
	2/3rd of Earth work 0.66 14.00 9.24				
9	(A) Filling in foundation or plinth by silver sand in layers not exceeding 150 mm as directed and consolidating the same by thorough saturation with water, ramming complete including the cost of supply of sand. (payment to be made on measurement of finished quantity) PWD Building Works schedule, Page - 2, Item -4.a	2.46	71181.00	%Cum	1751.05
	1 4.975 1.1 0.45 2.46				
10	Hire and labour charges for shuttering with centering and necessary staging upto 4 m using approved stout props and thick hard wood planks of approved thickness with required bracing for concrete slabs, beams and columns, lintels curved or straight including fitting, fixing and striking out after completion of works (upto roof of ground floor) (f) 25 mm to 30 mm shuttering without staging in foundation PWD Building Works schedule, Page -42, Item- 36.f	15.46	209.00	Sqm	3231.14

	Foundation	24	1.00		0.15	3.60				
	Tie Beam	1	16.25		0.3	4.88				
	Inside	1	13.25		0.3	3.98				
	Parti beam	4	1.35		0.25	1.35				
	Coumn	24	0.25		0.275	1.65				
						15.460				
11	Hire and labour charges for shuttering with centering and necessary staging upto 4 m using approved stout props and thick hard wood planks of approved thickness with required bracing for concrete slabs, beams and columns, lintels curved or straight including fitting, fixing and striking out after completion of works (upto roof of ground floor) (a) 25 mm to 30 mm thick wooden shuttering as per decision & direction of Engineer-In-Charge. PWD Building Works schedule, Page -42, Item- 36.a						44.60	334.00	Sqm	14896.40
	Coumn	24	0.25		2.375	14.250				
	Roof Beam	1	16.25		0.175	2.840				
	Roof Beam	1	13.25		0.175	2.320				
	Lintel	2	5.725		0.2	2.290				
	Lintel btm	4	0.750		0.125	0.380				
	slab with b btm	1	6.625	2.65		17.560				
	Slab Side	1	18.550		0.125	2.320				
	Reservior	1	1.8	1.2		2.160				
		1	4		0.12	0.480				
						44.600				
12	Ordinary Cement concrete (mix 1:1.5:3) with graded stone chips (20 mm nominal size) excluding shuttering and reinforcement,if any, in ground floor as per relevant IS codes. a) Pakur Variety /Chandil Variety PWD Building Works schedule, p-26 Item 10 a (Rate Analysis)						6.94	5468.54	Cum	37951.67
	Colm foot	6	1	1	0.15	0.900				
						$6*0.1/3*(1*1+0.3*0.3+1*0.3)=.278$				0.280
	Tool Column	6	0.3	0.3	0.275	0.150				
	Column	6	0.25	0.25	2.375	0.890				
	Tie Beam	1	14.75	0.25	0.3	1.110				
	Parti beam	2	1.6	0.2	0.25	0.160				
	Lintel	1	4.975	0.125	0.2	0.120				
	Slab Beam	1	14.75	0.25	0.175	0.650				
	Slab	1	6.625	2.65	0.125	2.190				
	Reservior	1	2.3	1.7	0.125	0.490				
						6.940				
13	Reinforcement for reinforced concrete work in all sorts of structures including distribution bars, stirrups, binders etc initial straightening and removal of loose rust (if necessary), cutting to requisite length, hooking and bending to correct shape, placing in proper position and binding with 16 gauge black annealed wire at every intersection, complete as per drawing and direction. (a) For works in foundation and upto roof of ground floor/upto 4 m. (i) Tor steel/Mild Steel , JSPL/SWAYN/ELETRO/STEEL PWD Building Works schedule, Page - 43, Item - 40.a.i.1(Corri. 10th Page-01, Date-23-01-2020) (Rate Analysis)						0.614	54400.74	M.T.	33402.05
	Footing	6	14	0.95	0.617	0.001	0.049			
	Column	6	4	4.175	0.89	0.001	0.089			
	Stirup	6	22	0.850	0.39	0.001	0.044			
	Tie beam	2	4	5.875	1.56	0.001	0.073			

	3	4	1.75	0.89	0.001	0.019					
Stirup	1	62	1.05	0.39	0.001	0.025					
PLBeam	2	4	1.75	0.89	0.001	0.012					
Stirup	2	8	0.750	0.39	0.001	0.005					
Lintel	1	4	5.725	0.617	0.001	0.014					
Stirup	1	32	0.650	0.39	0.001	0.008					
Roof Beam	2	4	5.875	1.56	0.001	0.073					
	3	4	1.75	0.89	0.001	0.019					
Stirup	1	62	1.05	0.39	0.001	0.025					
Slab	2	39	2.55	0.39	0.001	0.078					
less l/3	-1	13	0.850	0.39	0.001	-0.004					
	1	15	6.57	0.39	0.001	0.038					
less l/3	-1	5	2.19	0.39	0.001	-0.004					
UGR	1	19	1.65	0.39	0.001	0.012					
	1	14	2.25	0.39	0.001	0.012					
Lapping	15	1	0.8	1.56	0.001	0.019					
Lapping	15	1	0.6	0.89	0.001	0.008					
						0.6140					
14	Artificial stone in floor, dado, staircase etc with cement concrete (1:2:4) with stone chips, laid in panels as directed with topping made with ordinary or white cement (as necessary) and marble dust in proportion (1:2) including smooth finishing and rounding off corners including raking out joints or roughening of concrete surface and application of cement slurry before flooring..... 25 mm. thick For roofing PWD Building Works schedule, P-48, It-6 ii (Rate Analysis)							37.05	312.95	Sqm	11594.80
	roof	1	6.375	2.4		15.300					
	Open Space	1	7.5	1.5		11.250					
	Approch Road	1	7	1.5		10.500					
						37.050					
15	Neat cement punning about 1.5mm thick in wall, dado, window sill, floor etc. NOTE:Cement 0.152 cu.m per100 sq.m. PWD Building Works schedule, P-192, It. No. 15 (Rate Analysis)							20.45	32.75	Sqm	669.74
	Below Plinth	1	5.725		0.45	2.580					
		2	1.6		0.45	1.440					
	Reservior	1	6		1.2	7.200					
		2	1.8	1.2		4.320					
		1	2.3	1.7		3.910					
		1	8		0.125	1.000					
						20.450					
16	Labour for Chipping of concrete surface before taking up Plastering work. PWD Building Works schedule, P-192, It-1							56.35	21.00	Sqm	1183.35
	Lintel side	2	5.725		0.2	2.290					
	lintel btm	4	0.750		0.125	0.380					
	Beam	2	15.50		0.175	5.430					
	Beam	1	15.50		0.25	3.880					
	Slab bottom	1	6.625	2.65		17.560					
	Slab side	1	18.550		0.125	2.320					
	For roof treatment	1	6.375	2.4		15.300					
	Reservior	2	1.8	1.2		4.320					
		1	2.3	1.7		3.910					
		1	8		0.12	0.960					
						56.350					

17	Plaster (to wall, floor, ceiling etc.) with sand and cement mortar including rounding off or chamfering corners as directed and raking out joints including throating, nosing and drip course, scaffolding/staging where necessary (Ground floor).[Excluding cost of chipping over concrete surface] (i) With 1:6 cement mortar (c) 15 mm thick plaster PWD Building Works schedule, P-189 It- No. 1 (Rate Analysis)	61.61	141.52	Sqm	8719.05
	Below plinth	1	8.925	0.45	4.020
	Outer wall	1	5.725	2.55	14.600
	Outer wall	1	8.925	0.60	5.360
	Deduction	-4	0.750	1.95	-5.850
	Iner Wall	1	5.700	0.75	4.280
	Iner Wall	3	5.100	0.75	11.480
	Parapet wall	1	18.55	0.725	13.450
	Reservior	1	6	1.2	7.200
		1	1.8	1.2	2.160
		1	2.3	1.7	3.910
		1	8	0.125	1.000
				61.610	
18	Plaster (to wall, floor, ceiling etc.) with sand and cement mortar including rounding off or chamfering corners as directed and raking out joints including throating, nosing and drip course, scaffolding/staging where necessary (Ground floor).[Excluding cost of chipping over concrete surface] (ii) With 1:4 cement mortar (c) 10 mm thick plaster PWD Building Works schedule, P-189 It- No. 1 (ii)(c) (Rate Analysis)	17.56	126.53	Sqm	2221.87
	Slab bottom	1	6.625	2.65	17.560
19	Supplying, fitting and fixing fibre reinforced polymer (FRP) Composite door frame as per approved section with glass fibre reinforced plastic moulded skins and a special sandwich core, so as to impart monolitaheic composite structure as per approved technology of Department of Science and Technology (DST) to safisy IS: 4020 door testing performance criteria.. (i) 66mm x 90mm PWD Building Works schedule, P-115, It - 3 (i)	17.40	497.00	Mtr	8647.80
		4	4.35		17.400
20	Supplying, fitting & fixing fibre reinforced polymer (FRP) Composite door shutters as per approved design with glass fibre reinforced plastic moulded skins and a special sandwich core, so as to impart monolitaheic composite structure as per approved technology of Department of Science and Technology (DST) to satisfy IS:4020 door testing performance criteria. In ground floor. ii) 25 mm thick P-125, It- 14(ii)	4.61	2581.00	Sqm	11898.41
		4	1.734	0.664	4.610
21	Anodised aluminium barrel / tower / socket bolt (full covered) of approved manufactured from extruded section conforming to I.S. 204/74 fitted and fixed with cadmium plated screws . (vii) 225mm long x 10mm dia. bolt. PWD Building Works schedule, P-144, It No. 26 (vii)	4.00	84.00	Each	336.00
		4	1.00		4.000

22	Iron butt hinges of approved quality fitted and fixed with steel screws, with ISI mark. (viii) 100mm X 75mm X 3.50mm. PWD Building Works schedule, P-140, It No. -5 (viii)	12.00	66.00	Each	792.00
	4 3.00 12.000				
23	Anodised aluminium decorative handle (hexagonal / fluted) of approved quality fitted and fixed complete. (i) 150mm plate x 10mm dia rod x 12mm hexagonal/fluted. PWD Building Works schedule, Page -146 . Item no-31,(i)	8.00	87.00	Each	696.00
	4 2.00 8.000				
24	Iron hasp bolt of approved quality fitted and fixed complete (oxidised) with 16mm dia rod with concrete bolt and round fitting. .b)250mm long. PWD Building Works schedule, Page -141 . Item no-10 b)	4.00	159.00	Each	636.00
	4 1.00 4.000				
25	Rendering the Surface of walls and ceiling with White Cement base WATER PROOF wall putty of approved make & brand.(1.5 mm thick) In Ground Floor PWD Building Works schedule, PWD, P- 198, I - 5	75.15	122.00	Sqm	9168.30
	Same as Plaster Item - Plinth plaster 75.15				
26	(b) Priming one coat on timber or plastered surface with synthetic oil bound primer of approved quality including smoothening surfaces by sand papering etc. PWD Building Works schedule, Page -200 . Item no- 1 (b)	75.15	38.00	Sqm	2855.70
	Same as Plaster Item - Plinth plaster 75.15				
27	(A) Painting with best quality synthetic enamel paint of approved make and brand including smoothening surface by sand papering etc. including using of approved putty etc. on the surface, if necessary : Page - 200 . Item no- 1 (b) (a) On timber or plastered surface : With super gloss (hi-gloss) - (iv) Two coats (with any shade except white) PWD Building Works schedule, Page -200 . Item no- 2(A)(a)(iv)	75.15	81.00	Sqm	6087.15
	Same as Plaster Item - Plinth plaster 75.15				
28	(a) M.S.or W.I. Ornamental grill of approved design joints continuously welded with M.S, W.I. Flats and bars of windows, railing etc. fitted and fixed with necessary screws and lugs in ground floor.. (i) Grill weighing above 10 Kg./sq.mtr and up to 16 Kg./sq. mtr. PWD Building Works schedule, P-104 Item-13 A (i) (3rd Corrigendam Page No 91)	0.55	9888.00	Qntl	5438.40
	Grill 6 0.60 0.45 0.16 0.260				
	Box for pump 5 0.60 0.6 0.16 0.290				
	0.550				
29	a) Priming one coat on steel or other metal surface with synthetic oil bound primer of approved quality including smoothening surfaces by sand papering etc. PWD Building Works schedule, P/200 Item-1(a)	3.42	29.00	Sqm	99.18
	6 0.60 0.45 1.620				
	5 0.60 0.6 1.800				
	3.420				

30	<p>(A) Painting with best quality synthetic enamel paint of approved make and brand including smoothening surface by sand papering etc. including using of approved putty etc. on the surface, if necessary :</p> <p>(b) On steel or other metal surface :</p> <p>(iv) Two coats (with any shade except white)</p> <p>PWD Building Works schedule, P-200 Item-2(b)(iv)</p>	3.42	79.00	Sqm	270.18
	6 0.60 0.45 1.620				
	5 0.60 0.6 1.800				
	3.420				
31	<p>Supplying and laying true to line and level vitrified tiles of approved brand (size not less than 600 mm X 600 mm X 10 mm thick) in floor, skirting etc. set in 20 mm sand cement mortar (1:4) and 2 mm thick cement slurry back side of tiles using cement @ 2.91Kg./sqM direction of Engineer-in-Charge. (White cement, synthetic adhesive and grout material to be supplied by the contrr]e)</p> <p>I (I) With application slurry @1.75 kg/ Sq.m, 20 mm sand cement mortar (1:4) & 2 mm thick cement slurry at back side of tiles, 0.2 kg/ Sq.m white cement for joint filling with pigment.</p> <p>(A) Deep Colour & White</p> <p>PWD Building Works schedule, Page-66 Item-36 (A) (3rd Corrigendam , Page -36)</p>	12.33	1695.00	Sqm	20899.35
	Stair 1 5.725 0.95 5.440				
	floor 1 1.5 1.35 2.030				
	floor 3 1.2 1.35 4.860				
	12.330				
32	<p>Supplying, fitting & fixing 1st quality Ceramic tiles in walls and floors to match with the existing work & 4 nos. of key stones (10mm) fixed with araldite at the back of each tile & finishing the joints with white cement mixed with colouring oxide if required to match the colour of tiles including roughening of concrete surface, if necessary or by synthetic adhesive & grout materials etc.</p> <p>B) Wall b)</p> <p>Area of each tile above 0.09 Sq.m</p> <p>ii) Other than Coloured decorative including white</p> <p>PWD Building Works schedule, page-64, Item:35.(B.) (b).(ii) (3rd Corrigendam ,Page 36)</p>	48.96	1041.00	Sqm	50967.36
	Out side 1 8.925 1.95 17.400				
	Door -4 0.75 1.8 -5.400				
	Door frame side 4 4.65 0.075 1.400				
	Inner 1 5.7 1.95 11.120				
	Inner 3 5.1 1.95 29.840				
	Door -4 0.75 1.8 -5.400				
	48.960				

33	Supplying profiles of required section made of Aluminium Alloy Extrusions conforming to IS: 732-1983 and IS: 1285- 1975; Anodized (with required film thickness and specified colour / natural) matt finished conforming to IS: 1868-1983 for fabrication of composit door, sliding & casement windows, partitions, formed of basic sections of any ISI embossed / certified make and brand as per direction of Engineer - In- Charge. (Payment will be made on finished length of the work). (A) In 10-12 Micron thickness Anodizing film l) Natural white h) Louvered window. i) Top, bottom and side member. PWD Building Works schedule, PWD, P-233, I- 1(h) i	12.60	183.00	M	2305.80
	6 2.1 12.600				
34	ii) Louvered Section.	10.80	658.00	M	7106.40
	18 0.6 10.800				
35	iii) Cleat angle (Non-anodized).	9.72	263.00	M	2556.36
	18 0.54 9.7200				
36	Labour charge for fabrication and installation of composite door, window, partitions made from anodized extruded alloy aluminium sections for the following units:- (A) Glazed aluminium sliding windows made of extruded and anodized alloy aluminium excluding the cost of extruded aluminium sections, glass, neoprene / EPDM gasket, locking arrangement and rollers. v) Louvered window. PWD Building Works schedule SOR, PWD, P-239, I- 2 (v)	1.62	730.00	Sqm	1182.60
	6 0.6 0.45 1.620				
37	Supplying bubble free float glass of approved make and brand conforming to IS: 2835-1987. iv) 5mm thick coloured / tinted / smoke glass. PWD Building Works schedule, P-243, I -9	1.62	585.00	Sq.M.	947.70
	6 0.6 0.45 1.620				
38	Painting block letters or digits in Black Japan or any approved paint as per direction. e) Size above 7.5 cm. and upto 10 cm. PWD Building Works schedule, P-268, It-17(e)	450.00	12.00	Each	5400.00
39	Supplying, fitting and fixing 18 mm thick marble partition slab with chawk doongri marbel square cut, both sides polished with two front corners rounded and edges polished. Sanitary and plumbing work schedule P-81, It-13	0.72	1426.00	Sqm	1026.72
	1 1.2 0.6 0.72				
40	Supplying and Planting of different plant / trees (Supplying well grown plants bushy and healthy, minimum height as specified i.e. exposed height including all leads & lift, carriage, handling, manuring, applying presticide and fertilizer etc. . . i) Furcaria veriegated 10-12 leaves in height 20-30cm in earthen pots of size 25cm. PWD Building Works schedule. Page -261. It- 9 (i)	5.00	162.00	Each	810.00
41	x) Ficus blakii (F. Vivicon) well branched (Bushy) of height 120cm - 135 cm in earthen pot of size 30cm. PWD Building Works schedule, Page -261, It- 9 (x)	4.00	187.00	Each	748.00

42	xxvi) Areca Palm 4 - 5 suckers of height 90 cm to 105 cm in earthen pots of size 25 cm. PWD Building Works schedule, Page -261, It- 9 (xxvi)	4.00	127.00	Each	508.00
43	Supplying, fitting and fixing Anglo-Indian W.C. in white glazed vitreous china ware of approved make complete in position with necessary bolts, nuts etc. a) With 'P' trap (with vent) PWD S&P Schedule, page-79, item no -3 (a)	3.00	3104.00	Each	9312.00
44	Supplying, fitting and fixing Closet seat of approved make with lid and C.P. hinges, rubber buffer and brass screws complete .(b) Anglo Indian (i) Plastic (hallow type) White PWD S&P Schedule, page-81,item no 10.b.i	3.00	485.00	Each	1455.00
45	Supplying, fitting and fixing Flat back urinal (half stall urinal) in white vitreous chinaware of approved make in position with brass screws on 75 mm X 75 mm X 75 mm wooden blocks complete (ii) 470 mm X 280 mm X 340 mm PWD S&P Schedule, page.80,item no-6/(ii)	3.00	945.00	Each	2835.00
46	Supplying, fitting and fixing 10 litre P.V.C. low-down cistern conforming to I.S. specification with P.V.C. fittings complete,C.I. brackets including two coats of painting to bracket etc. PWD S&P Schedule, Page No.-36 Item No.-2,	3.00	1015.00	Nos	3045.00
47	Supplying,fitting and fixing 32 mm dia. Flush Pipe of approved make with necessary fixing materials and clamps complete. i) Polythene Flush Pipe PWD S&P Schedule, Page no 81. Item no. 11(i)	3.00	155.00	Each	465.00
48	Supplying, fitting and fixing urinal flush pipe fittings of approved brand. (a) C.P. urinal flush pipe fittings range of one PWD S&P Schedule, S.P.81,item-12/a	2.00	414.00	Each	828.00
49	Supplying, fitting and fixing white vitreous china best quality approved make wash basin with C.I. brackets on 75 mm X 75 mm wooden blocks, C.P. waste fittings of 32 mm dia., mending good all damages and painting the brackets with two coats of approved paint. (ii) 550 mm X 400 mm size PWD S&P Schedule, P-41, It 2 (ii)	2.00	2208.00	Each	4416.00
50	Supplying,fitting and fixing approved brand P.V.C. CONNECTOR white flexible, with both ends coupling with heavy brass C.P. nut, 15 mm dia., (iii) 600 mm long PWD S&P Schedule, Page No.-43 Item No.-9-iii PWD,	5.00	107.00	Each	535.00
51	Supplying,fitting and fixing approved brand 32 mm dia.P.V.C. waste pipe, with PVC coupling at one end fitted with necessary clamps. (iv) 1050 mm long each PWD S&P Schedule, Page No.-43 Item No. 10-iv	4.00	91.00	Each	364.00
52	(f) Hand Shower(Health Faucet) with 1mtr Flexible Tube with Wall Hook(Equivalent to Code No.573 & Model -ALLIED of Jaquar or similar). PWD S&P Schedule, Page No.-3 Item No.- 3 f,	3.00	1251.00	Each	3753.00

53	(a) (i) Chromium plated Bib Cock short body (Equivalent to Code No. 511 & Model - Tropical / Sumthing Special of ESSCO or similar brand). PWD S&P Schedule, Page No.-6 Item No.-7-a-i	4.00	539.00	Each	2156.00
54	(b) (i) Chromium plated Stop Cock (Equivalent to Code No. 513(A) & 513(B) & Model - Tropical / Sumthing Special of ESSCO or similar brand). PWD S&P Schedule, Page No.-6 Item No.-7-b-i	2.00	493.00	Each	986.00
55	Chromium plated angular Stop Cock with wall flange (Equivalent to Code No. 5053 & Model - Florentine of Jaquar or similar brand). PWD S&P Schedule, Page No.-6 Item No.-7-d-i,	5.00	815.00	Each	4075.00
56	Supplying, fitting and fixing pillar cock of approved make. a) (i) CP Pillar Cock - 15 mm. (Equivalent to Code No. 507 & Model - Tropical / Sumthing Special of ESSCO or similar brand). (P. No. - 45, Item. No. - 19(a)i, Pwd Sanitary Plumbing Schedule 2017)	2.00	555.00	Each	1110.00
57	Supplying, fitting and fixing PVC pipes of approved make of Schedule 80 (medium duty) conforming to ASTM D - 1785 and threaded to match with GI Pipes as per IS : 1239 (Part - I). with all necessary accessories, specials viz. socket, bend, tee, union, cross, elbo, nipple, long screw, reducing socket, reducing tee, short piece etc. No separate payment will be made for accessories, specials. Payment for painting will be made separately) (a) For Exposed Work PVC Pipes, 25 mm Page No.-12 Item No.-19-i(a), PWD,VOL-II , 2017-18	20.00	177.00	Mtr	3540.00
58	(a) (a) For Exposed Work PVC Pipes, 15 mm Page No.-12 Item No.-19-i(a), PWD,VOL-II , 2017-18	9.00	101.00	Mtr	909.00
59	(b) For Concealed Work PVC Pipes, 15 mm Page No.-12 Item No.-19-i(b), PWD,VOL-II , 2017-18	9.00	137.00	Mtr	1233.00
60	Supplying and fitting fixing of gunmetal wheel valve of approved brand and make tested to 21 Kg per sq. cm. 25 mm dia(E5) PWD S&P Schedule, P-5 It-5,vii),	2.00	778.00	Each	1556.00
61	Supplying P.V.C. water storage tank of approved quality with closed top with lid (Black) - Multilayer (b) 1000 litre capacity PWD S&P Schedule, page.37,item no-6 (b)	1.00	5128.00	Each	5128.00
62	Labour for hoisting plastic water storage tank. (i) Upto 1500 litre capacity. (a) Upto.1st story from G.L. PWD S&P Schedule, page.37,item no-10 (i)(a)	1.00	96.00	Each	96.00
63	Labour for punching hole in plastic water storage tank upto 50 mm dia. PWD S&P Schedule, (P. No. - 38, Item. No. - 13	2.00	19.00	Each	38.00

64	Supply of UPVC pipes (B Type) & fittings conforming to IS-13592-1992.(A) (i) Single Socketed 3 Meter Length, 110 mm PWD S&P Schedule, Page No.-68 Item No. 23,(A)(i)(b)	24.00	292.00	Mtr	7008.00
65	(B) Fittings (i) Coupler, (b) 110 mm	7.00	85.00	Each	595.00
66	(ii) Plain Tee, (b) 110 mm	7.00	85.00	Each	595.00
67	(iii) Door Tee, (b) 110 mm	5.00	195.00	Each	975.00
68	ix) Bend 45°, (b) 110 mm	6.00	89.00	Each	534.00
69	xi) Door Bend (T.S.), (b) 110 mm	5.00	147.00	Each	735.00
70	xvi) Pipe Clip, (b) 110 mm	20.00	21.00	Each	420.00
71	xvii) W.C. Connector (150 mm long) 125 X 110(W/WC Ring) 75 mm	3.00	142.00	Each	426.00
72	xxx) Plain Floor Trap with Top tile & Strainer 75 mm	4.00	144.00	Each	576.00
73	L) Rubber Ring, (b) 110 mm	20.00	17.00	Each	340.00
74	C)Rubber Lubricant 500 ML	2.00	187.00	500 ML	374.00
75	D)Solvent Cement 250 ML	1.00	103.00	250 ML	103.00
76	Labour for fitting and fixing U.P.V.C. pipes for above ground work including cost of jointing materials etc. fitting and fixing all necessary specials, cutting pipes, cutting holes in total pipeline including specials. (B) Under ground, (ii) 110 mm dia. PWD S&P Schedule, (P. - 74, Item. No. - 24 (B)	24.00	84.00	Mtr	2016.00
77	Supplying, fitting & fixing UPVC pipes A- Type and fittings conforming to IS:13592-1992 with all necessary clamps nails, including making holes in walls, floor etc. cutting trenches in any soil through masonry concrete structures etc if necessary and mending good damages including joining with jointing materials (Spun Yarn, Valamoid/Bitumen/M-Seal etc) complete. A) UPVC Pipes: (i) 75 mm. Dia. (P. - 212, Item. No. - 21 (A)(i) , (B),(c),(i) & (B), (d),(i), Pwd volume-i, 2017)	10.00	188.00	Mtr	1880.00
78	B) UPVC Fittings: c) Bend 87.5 degree (i) 75 mm. Dia.	3.00	95.00	Mtr	285.00
79	B) UPVC Fittings: d) Shoe (i) 75 mm. Dia.	3.00	78.00	Mtr	234.00
80	Constructing Inspection pit of inside measurement 600mm X 600mm X upto 600mm (depth) with 250 mm thick 1st. class brick work in cement mortar (1:4) on all sides, bottom of the pit consisting of 100 mm thick cement concrete (1:3:6) with stone chips in all sorts of soil, filling sides of the pit with earth and removing spoils after work complete in all respect with all costs of labour and materials. i) With Pakur variety (Other than SAIL/TATA/RINL). PWD S&P Schedule, S.P.87,Item No-1/(i), 7th Corrigenda Volume ii	2.00	7027.00	Each	14054.00

81	Construction of septic tank of different capacities as per approved drawing with 1st class brick work in cement mortar (1:4) including two 560 mm dia. R.C.C. manhole cover (heavy type) of approved make supplied, stone flooring is to be done with admixture of water proofing compound @ 0.5% by weight of cement with all costs of labour and materials. (ii) For 20 users A) With Pakur variety. (JSW/JSPL/SHYAM/SRMB/ELECTROSTEEL/SSL) PWD S&P Schedule, S.P.88, Item No-3(ii)(A) 7th Corrigenda Volume ii		1.00	47178.00	Each	47178.00	
82	Construction of circular soak well 2.5 metre deep in all types of sandy soils with dry brick work upto 1.6 metre from the bottom having 150 mm intermediate cement brick work (1:4) band all all costs of labour and materials. With 250 mm thick dry brick work and 250 mm thick cement brick work (1:6) and 1.00m inside dia. (Other than SAIL/TATA/RINL) S.P.89, Item No-4 7th Corrigenda Volume ii		1.00	16375.00	Each	16375.00	
83	Supplying, fitting and fixing towel rail with two brackets. (a) C.P. over brass (ii) 25 mm dia. and 600 mm long S&P Schedule, p No 82 I No- 22 (a)(ii)	PWD	4.00	430.00	Each	1720.00	
84	Supplying, fitting and fixing cast iron raised rain proof tank cover 500 mm dia. with locking arrangements (weighing not less than 12 kg). PWD S&P Schedule, . page-37, item no -8		1.00	1263.00	Each	1263.00	
85	Supplying, fitting and fixing bevelled edged mirror 5.5 mm thick silver red as per I.S. 3438 / 1965 together with brass C.P. hinges. (ii) 600 mm X 450 mm PWD S&P Schedule, P-81, It-15(ii)		2.00	484.00	Each	968.00	
86	Supplying, fitting and fixing soap holder. Fibre glass and plumbing work schedule P-82, It-18(b)	(b) Sanitary	6.00	58.00	Each	348.00	
87	Supplying, fitting and fixing glass shelf with aluminium guard rails. (a) Ordinary type with 5.5 mm sheet glass 450 mm X 125 mm Sanitary and plumbing work schedule P-81, It-16(a)(i)	(i)	4.00	341.00	Each	1364.00	
Sub Total Of (A)						486239.44	
Add S.G.S.T. @						9%	43761.55
Add C.G.S.T. @						9%	43761.55
Cost Of Civil & Sanitary Work						573762.54	
Add L.W.C. @						1%	5737.63
Total payable Amount Including L.W.C.						579500.17	
Add Contengency @3%						17212.88	
Total payable Amount Including L.W.C. and contengency						596713.05	
Say Rs.						596713.00	
In Word (Say) : Rupees Six Lakh Two Thousand Seven hundred Ninety Five only							

(Rupees five Lakh Ninety six thousand seven hundred thirteen only)

Sub Assistant Engineer
Tarakeswar Municipality

Junior Engineer (Civil)

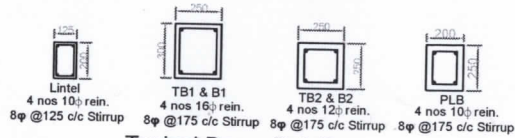
Hooghly Division
M.E. Directorate, Deptt. of U.D. & M.A.
Govt. of West Bengal

Assistant Engineer
Hooghly Division, M.E. Dte
Deptt. of U.D. & M.A.
Govt. of West Bengal

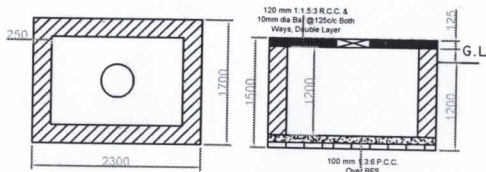
Executive Engineer

Hooghly Division
M.E. Directorate, Deptt. of U.D. & M.A.
Govt. of West Bengal

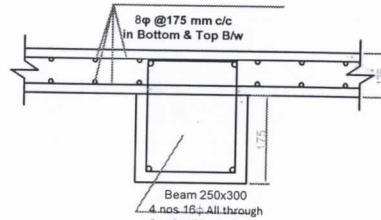
CHAIRMAN
TARAKESWAR MUNICIPALITY



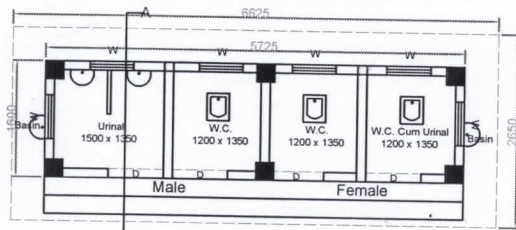
Typical Beam Details



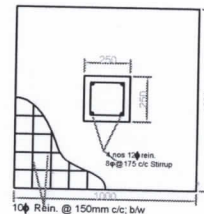
Under Ground Reservoir Details



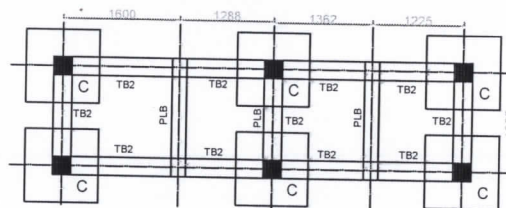
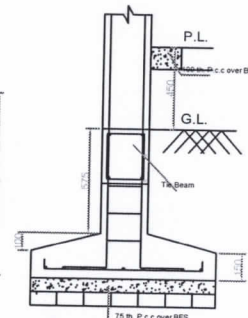
Slab Beam Details



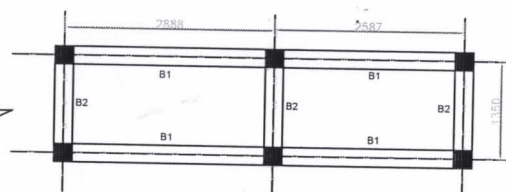
Ground Floor Plan



DETAILS OF FOUNDATION (SCALE 1:25)



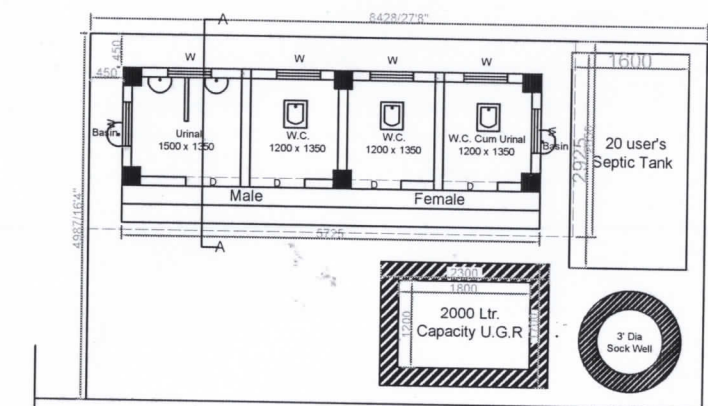
Foundation & tie Beam Details



Slab Beam Details

Door - Window Shedule

MKD.	Size	Reinforcement		Stirrup	
		Support	Span		
TB1&B1	250x300	2#16 ϕ	2#16 ϕ	2#16 ϕ	8 ϕ @ 175c/c
TB2&B2	200x250	2#12 ϕ	2#12 ϕ	2#12 ϕ	
All Column	250x250	4#12 ϕ		8 ϕ @ 175c/c	



Common Passage

Sample Site Plan For CT Plan 2

14.10.25
 Sub Assistant Engineer
 Tarakeswar Municipality

Area Statement

Builtup Area - 9.16 Sq.m.
 Roof Area - 17.55 Sq.m.

KACHARIVITA, NILIMA
 SANYALPARA
 GENERAL NOTES

1. ALL DIMENSIONS ARE IN MM.
2. OUTER WALL IS 125 MM. TH. WITH 1ST CLASS BRICKS IN CEMENT MORTER(6:1) AND PARTION WALL IS 125MM. TH. IN CEMENT MORTER(4:1)
3. GRADE OF CONCRETE M-20 ORDINARY CEMENT CONCRETE (MIXI:1.5:3)
4. GRADE OF STEEL:FE-510
5. 25MM. TH D.P.C(MIXI:2:4) WILL BE APPLIED
6. PLASTERING:
 OUTSIDE-15MM. TH. IN CEMENT MORTER(1:6)
 INSIDE-15MM. TH. IN CEMENT MORTER(1:6)
 CEILING-10MM. TH. CEMENT MORTER(1:4)
 BEARING CAPACITY OF SOIL AT DEPTH 1M BELOW G.L. = 110 KN/M2, WHICH MUCH BE EXPLODED BEFORE CONSTRUCTION. REDRAWING & REDESIGN IS NESSESSARY IS BEARRING CAPACITY OF SOIL IS POOR THEN ASSUMED.

CHAIRMAN
 TARAKESWAR MUNICIPALITY

Signature Of Authority