

3/a

**OFFICE OF THE BOARD OF COUNCILLOR
KANCHRAPARA MUNICIPALITY**

42, Netaji Subhas Path, Kanchrapara, North 24 Parganas.

Name of work - Estimate of Civil work for Construction Community Toilet (Toilet seats.-6nos & Urinal.-7nos) at Kanchrapara Shree Mandhari High School, Ward No-16 under Kanchrapara Municipality of West Bengal (Model - ULB).

Schedule of Rates followed from : Latest PWD SOR(Building) & (Sanitary and plumbing).3rd Corrigenda & Aggenda.

Sl. No.	SOR Page & Item	Description of Works	Unit	Total Qty	Rate	Amount (Rs.)
(A) CIVIL WORKS						
1	Pg-1, It.-2(a)	Earth work in excavation of foundation trenches or drains, in all sorts of soil (including mixed soil but excluding laterite or sandstone) including removing, spreading or stacking the spoils within a lead of 75 m. as directed. The item includes necessary trimming the sides of trenches, levelling, dressing and ramming the bottom, bailing out water as required complete. (a) Depth of excavation not exceeding 1,500 mm.	Cum	5.20	119.27	619.91 620.20
2	Pg-1, It-3(a)	Earthwork in filling of foundation trenches with good earth in layer not exceeding 150 mm including watering & ramming etc. Layer by layer complete with earth obtained from excavation of foundation or from fresh excavation of land arranged by the departm within a lead of 150m	Cum	1.04	77.54	80.64
3	Pg-2, It.-4(A)	Filling in foundation by silver sand in layers not exceeding 150 mm including breaking clods consolidating the same by ramming and dressing complete including the cost of supply of sand (Payment to made on measurement of finish quantity)	Cum	6.45	936.21	6,035.04 6,038.55
4	Pg-14, It-1 & 3rd corrigendum(Bld)(P-1)	Single brick flat soling of picked jhama brick flat soling of picked jhama bricks including ramming and dressing bed to proper level and filling joints with powdered earth or local sand.	Sqm	37.72	361.00	13,616.92
5	Analysis Rate	Ordinary cement concrete M15(1:2:4) with graded stone chips (20 mm down) excluding shuttering and reinforcement if any in ground floor. As per IS 456-2000 100 mm thick.	Cum	3.55	5220.13	18,515.80 18,531.46
6	Analysis Rate	Nominal Mix – M20 (1:1.5:3) cement concrete with graded stone chips (20 mm size) excluding shutting and reinforcement if any in ground floor (Pakur/Chandil Chips)	Cum	4.87	5716.85	27,821.59 27,841.06
7	Analysis Rate	25mm. thick dampproof course with cement concrete with stone chips (1:1.5:3) [with graded stone aggregate 10mm nominal size]and admixture of waterproofing compoundas per manufacturer's specification followed by two coat of polymer based paint, (1st coat after 4 to 5 days of concrete laying and 2 nd coat just before brick masonry work) as directed (cost of water proofingcompound &polymer based paint tobe paid separately).(Chequering not required over concrete or painted surface). [Note:-Water proofing as per item 9, polymer based paint as per item 8 (a) of subhead C of Section (C)	Sqm	2.51	184.16	461.55 462.24
8	Analysis Rate	Reinforcement for reinforced concrete work in all sorts of structures including distribution bars, stirrups, binders etc initial straightening and removal of loose rust (if necessary), cutting to requisite length, hooking and bending to correct shape, placing in proper position and binding with 16 gauge black annealed wire at every intersection, complete as per drawing and direction.(a) For works in foundation and upto roof of ground floor/upto 4 m II. Other than SAIL/TATA/RINL.	MT	0.46	54522.54 53,694.00	25,080.37 24,607.24
9	Pg-47, It-03	Supplying and laying Polythene Sheet (150gm / sq.m.) over damp proof course or below flooring or roof terracing or in foundation or in foundation trenches.	Sqm	28.65	24.00	687.60
10	Pg -42, It- 36.f	Hire and labour charges for shuttering with centering and necessary staging upto 4 m using approved stout props and thick hard wood planks of approved thickness with required bracing for concrete slabs, beams and columns, lintels curved or straight including fitting, fixing and striking out after completion of works (upto roof of ground floor) (f) 25 mm to 30 mm shuttering without staging in foundation	Sqm	12.214	209.00	2,552.67 2,552.73
11	Pg -42, It- 36.a	Hire and labour charges for shuttering with centering and necessary staging upto 4 m using approved stout props and thick hard wood planks of approved thickness with required bracing for concrete slabs, beams and columns, lintels curved or straight including fitting, fixing and striking out after completion of works (upto roof of ground floor) (a) 25 mm to 30 mm thick wooden shuttering as per decision & direction of Engineer-In-Charge.	Sqm	31.189	335.00	10,448.44 10,448.32
12	Pg-16, It-16/3rd corrigenda	125 mm. thick brick work with 1st class bricks in cement mortar (1:4) in ground floor.	Sqm	54.52	736.00	40,124.88 40,126.72
13	Pg-15, It-7(b)/3rd corrigenda	Brick work with 1st class bricks in cement mortar (1:4) (b) superstructure ground floor.	Cum	7.97	5905.00 5892.17	47,064.70 46,522.24
14	Pg-15, It-7(a)/3rd corrigenda	Brick work with 1st class bricks in cement mortar (1:4) (a) Foundation and plinth ground floor	Cum	3.62	5682.00 564.17	20,540.43 20,323.30

Sl. No.	SOR Page & Item	Description of Works	Unit	Total Qty	Rate	Amount (Rs.)
15	Pg -106, It- 18	Collapsible gate with 40 mm x 10 mm x 6 mm Tee as top and bottom guide rail , 20 mm x 10 mm x 2 mm vertical channels 100 mm apart in full stretched position 20m x 5 mm MS flats as collapsible bracings properly riveted and washed including 38 mm steel roller including locking arrangements , fitted and fixed in position with lugs set in cement concrete including cutting necessary hicks chasing etc in walls , floors etc and making good all damages .	Sqm	4.20	3402.00 4930.00	14,288.40 18,126.00
16	Pg-192, It-1	Labour for Chipping of concrete surface before taking up Plastering work.	Sqm	16.61	21.00	348.73 348.81
17	P-189, It-1(i)(c)/3rd corrigenda	Plaster (to wall, floor, ceiling etc.) with sand and cement mortar including rounding off or chamfering corners as directed and raking out joints including throating, nosing and drip course, scaffolding/staging where necessary (Ground floor).[Excluding cost of chipping over concrete surface] (i) With 1:6 cement mortar (c) 15 mm thick plaster. For wall surface.	Sqm	217.65	151.00 148.55	32,865.43 32,331.91
18	P-189,It-1 (ii)(c)/3rd corrigenda	Plaster (to wall, floor, ceiling etc.) with sand and cement mortar including rounding off or chamfering corners as directed and raking out joints including throating, nosing and drip course, scaffolding/staging where necessary (Ground floor).[Excluding cost of chipping over concrete surface] (ii) With 1:4 cement mortar (c) 10 mm thick plaster. For ceiling.	Sqm	28.65	133.00 130.55	3,810.45 3740.26
19	Pg-192, It-15.	Neat cement punning about 1.5mm thick in wall,dado>window sill,floor etc. NOTE:Cement 0.152 cu.m per100 sq.m.	Sqm	8.08	34.00 32.76	274.76
20	Pg -74 , It- 46(i)	Supplying and laying chequered tiles of any shade and of approved quality with (1:1.5:3) cement concrete laid in pannels or patterns as directed in pavement ,footpath etc including necessary underlay 25 mm thick (avg)cement mortar (1:3) complete in all respect with all labour and materials. (Using cement slurry @4.4kg/sq.m at back side and @2.4 kg/sq.m for joint filling). Red Variety (i)25 mm thick.	Sqm	6.00	471.00 480.00	2,826.00 2880.00
21	Pg- 198, It - 5	Rendering the Surface of walls and ceiling with White Cement base WATER PROOF wall putty of approved make & brand.(1.5 mm thick) In Ground Floor	Sqm	258.39	122.00	31,523.58
22	Pg -196 , It- 8(b)	Applying exterior grade Acrylic Primer of approved quality and brand on plastered or concrete surface old or new surface to receive Decorative Textured (Marrr Finish) or Smooth Finish Acrylic exterior emulsion paint including scraping and preparing the surface thoroughly , complete as per manufacturer's specification and as per direction of the EIC in Ground Floor (b) two coats.	Sqm	48.81	45.10	2,201.19 2201.33
23	Pg -197 , It- 17(a)	Protective and Decorative Acrylic Exterior emulsion paint of approved quality, as per manufacturer's specification and as per direction of EIC to be applied over Acrylic primer as required. The rate includes cost of materials, labour, scaffolding and all incidental charges but excluding the cost of primer in ground floor (two coats)(a) normal acrylic emulsion.	Sqm	48.81	67.00	3,270.06 3270.27
24	Pg -195 , It- 7(b)(i)	Applying interior grade Acrylic Primer of approved quality and brand on plastered and concrete surface old or new surface to receive Distemper Acrylic emulsion paint including scraping and preparing the surface thoroughly , complete as per manufacturer's specification and as per direction of the E-I-C (Ground Floor) (b) Two Coats i) Water based interior grade Acrylic Primer	Sqm	74.33	44.20	3,285.23
25	Pg -196 , It- 9(b)	Dry Destempering interior walls or ceiling including cleaning, washing, smoothening surface (b) two coats	Sqm	74.33	49.00	3,642.17
26	Pg-115, It- 3 (i)	Supplying, fitting and fixing fibre reinforced polymer (FRP) Composite door frame as per approved section with glass fibre reinforced plastic moulded skins and a special sandwich core, so as to impart monolithic composite structure as per approved technology of Department of Science and Technology (DST) to satisfy IS: 4020 door testing performance criteria.. (i) 66mm x 90mm	Mtr.	29.70	497.00	14,760.90
27	Pg-125, It- 14(ii)	Supplying, fitting & fixing fibre reinforced polymer (FRP) Composite door shutters as per approved design with glass fibre reinforced plastic moulded skins and a special sandwich core, so as to impart monolithic composite structure as per approved technology of Department of Science and Technology (DST) to satisfy IS:4020 door testing performance criteria. In ground floor. ii) 25 mm thick	Sqm	9.45	2581.00	24,390.45
28	Pg-66 It- 36(i)(A)/ 3rd corrigenda	Supplying and laying true to line and level vitrified tiles of approved brand (size not less than 600 mm X 600 mm X 10 mm thick) in floor, skirting etc. set in 20 mm sand cement mortar (1:4) and 2 mm thick cement slurry back side of tiles using cement @ 2.91Kg./sqM or using polymerised adhesive (6 mm thick layer applied directly over finished artificial stone floor/Mosaic etc without any backing course) laid after application slurry using 1.75 Kg of cement per sqM below mortar only, joints grouted with admixture of white cement and colouring Pigment to match with colour of tiles / epoxy grout materials of approved make as directed and removal of wax coating of top surface of tiles with warm water and polishing the tiles using soft and dry cloth upto mirror finish complete including the cost of materials, labour and all other incidental charges complete true to the manufacturer's specification and direction of Engineer-in-Charge. (White cement, synthetic adhesive and grout material to be supplied by the contractor) I (I) With application slurry @1.75 kg/ Sq.m, 20 mm sand cement mortar (1:4) & 2 mm thick cement slurry at back side of tiles, 0.2 kg/ Sq.m white cement for joint filling with pigment. (A) Deep Colour & White, For Floor	Sqm	28.65	1704.00	48,819.60

Sl. No.	SOR Page & Item	Description of Works	Unit	Total Qty	Rate	Amount (Rs.)
29	Pg-64, It-35.(B.) (b),(ii)(3rd Corrigenda)	Supplying, fitting & fixing 1st quality Ceramic tiles in walls and floors to match with the existing work & 4 nos. of key stones (10mm) fixed with araldite at the back of each tile & finishing the joints with white cement mixed with colouring oxide if required to match the colour of tiles including roughening of concrete surface, if necessary or by synthetic adhesive & grout materials B) Wall Area of each tile above 0.09 Sq.m ii) Other than Coloured decorative including white	Sqm	120.54	1047.00	1,26,209.31 1,26,209.31 1,26,205.38
30	Pg-200 . It-1 (b)	Priming one coat on timber or plastered surface with synthetic oil bound primer of approved quality including smoothening surfaces by sand papering etc.	Sqm	4.32	38.00	164.16
31	Pg-200 . It-2(A)(a)(iv)	Painting with best quality synthetic enamel paint of approved make and brand including smoothening surface by sand papering etc. including using of approved putty etc. on the surface, if necessary : (a) On timber or plastered surface : With super gloss (hi-gloss) - (iv) Two coats (with any shade except white)	Sqm	4.32	81.00	349.92
32	Pg-104 It-13 A (i) (3rd Corrigenda m Page No 91)	M.S.or W.I. Ornamental grill of approved design joints continuously welded with M.S, W.I. Flats and bars of windows, railing etc. fitted and fixed with necessary screws and lugs in ground floor. (i) Grill weighing above 10 Kg./sq.mtr and up to 16 Kg./sq. mtr.	Qntl	0.516	9888.00	5,102.21
33	Pg-200, It-1 (a)	Priming one coat on steel or other metal surface with synthetic oil bound primer of approved quality including smoothening surfaces by sand papering etc.	Sqm	5.160	29.00	149.64
34	Pg-201, It-2A(b)(iv)	Painting with best quality synthetic enamel paint of approved make and brand including smoothening surface by sand papering etc. including using of approved putty etc. on the surface, if necessary : (b) On steel or other metal surface : (iv) Two coats (with any shade except white)	Sqm	5.160	79.00	407.64
35	Pg-140, It-5 (viii)	Iron butt hinges of approved quality fitted and fixed with steel screws, with ISI mark. (viii) 100mm X 75mm X 3.50mm.	Each	18.00	66.00	1,188.00
36	Pg-144, It-26(vii)	Anodised aluminium barrel / tower / socket bolt (full covered) of approved manufactured from extruded section conforming to I.S. 204/74 fitted and fixed with cadmium plated screws . (vii) 225mm long x 10mm dia. bolt.	Each	12.00	84.00	1,008.00
37	Pg-141 It-10 (b)	Iron hasp bolt of approved quality fitted and fixed complete (oxidised) with 16mm dia rod with concrete bolt and round fitting. (b)250mm long.	Each	6.00	159.00	954.00
38	Pg-146, Item-31(i)	Anodised aluminium decorative handle (hexagonal / fluted) of approved quality fitted and fixed complete. (i) 150mm plate x 10mm dia rod x 12mm hexagonal/fluted.	Each	12.00	87.00	1,044.00
39	Pg-233, It-1A(i)(h)(i)	Supplying profiles of required section made of Aluminium Alloy Extrusions conforming to IS: 732-1983 and IS: 1285- 1975; Anodized (with required film thickness and specified colour / natural) matt finished conforming to IS: 1868-1983 for fabrication of composit door, sliding & casement windows, partitions, formed of basic sections of any ISI embossed / certified make and brand as per direction of Engineer - In- Charge. (Payment will be made on finished length of the work). (A) In 10-12 Micron thickness Anodizing film I) Natural white h) Louvered window. i) Top, bottom and side member.	Mtr.	8.40	183.00	1,537.20
40	Pg-233, It-1A(i)(h)(ii)	ii) Louvered Section.	Mtr.	7.20	658.00	4,737.60
41	Pg-233, It-1A(i)(h)(iii)	iii) Cleat angle (Non-anodized).	Mtr.	6.48	263.00	1,704.24
42	Pg-243, It-9(iv)	Supplying bubble free float glass of approved make and brand conforming to IS: 2835-1987. iv) 5mm thick coloured / tinted / smoke glass.	Sqm	1.62	585.00	947.70
43	Pg-268, It-17(e)	Painting block letters or digits in Black Japan or any approved paint as per direction. e) Size above 7.5 cm. and upto 10 cm.	Each	450.00	12.00	5,400.00
44	Pg-261, It-9(i)	Supplying and planting of different plants / trees (supplying well grown plants bushy and healthy, minimum height as specified i.e. exposed height including all leads and lifts, carriage, handling, manuring applying pesticide and fertilizer etc. i) Furcaria Veriegated 10 to 12 leaves in height 20-30 cm in earthen pot of size 25 cm	Each	10.00	162.00	1,620.00
45	Pg-261, It-9 (x)	x) Ficus blakii (F. Vivicon) well branched (Bushy) of height 120cm - 135 cm in earthen pot of size 30cm.	Each	3.00	187.00	561.00
46	Pg-261, It-9 (xxvi)	xxvi) Areca Palm 4 - 5 suckers of height 90 cm to 105 cm in earthen pots of size 25 cm.	Each	3.00	127.00	381.00
Total Cost for (A) = Rs.						5,53,423.10

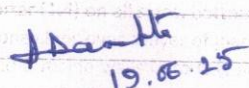
Sl. No.	SOR Page & Item	Description of Works	Unit	Total Qty	Rate	Amount (Rs.)
(B) SANITARY AND PLUMBING WORKS						
47	Pg-79, It-3 (a)	Supplying, fitting and fixing Anglo-Indian W.C. in white glazed vitreous china ware of approved make complete in position with necessary bolts, nuts etc. a) With 'P' trap (with vent)	Each	6.00	3104.00	18,624.00
48	pg-81, It-10.b.(ii)	Supplying, fitting and fixing Closet seat of approved make with lid and C.P. hinges, rubber buffer and brass screws complete .(b) Anglo Indian (ii) Plastic (hallow type) White	Each	6.00	485.00	2,910.00
49	Pg-80, It-6(ii)	Supplying, fitting and fixing Flat back urinal (half stall urinal) in white vitreous chinaware of approved make in position with brass screws on 75mm X 75 mm X 75 mm wooden blocks complete. (ii) 470 mm X 280 mm X 340 mm	Each	4.00	945.00	3,780.00
50	Pg-80, It-7	Supplying, fitting and fixing Squating plate with integral flushing in white vitreous chinaware of approved make in cement concrete (6:3:1) with jhama chips complete. (Payment of concrete will be paid seperately). (i) 450 mm X 350 mm	Each	3.00	881.00	2,643.00
51	Pg- 36, It- 2	Supplying, fitting and fixing 10 litre P.V.C. low-down cistern conforming to I.S. specification with P.V.C. fittings complete,C.I. brackets including two coats of painting to bracket etc. Hindware or equivalent make.	Each	6.00	1015.00	6,090.00
52	Pg-81, It- 11(i)	Supplying,fitting and fixing 32 mm dia. Flush Pipe of approved make with necessary fixing materials and clamps complete. i) Polythene Flush Pipe	Each	6.00	155.00	930.00
53	Pg-81, It-12(a)	Supplying, fitting and fixing urinal flush pipe fittings of approved brand. (a) C.P. urinal flush pipe fittings range of one	Each	4.00	414.00	1,656.00
54	Pg-41, It-2 (ii)	Supplying, fitting and fixing white vitreous china best quality approved make wash basin with C.I. brackets on 75 mm X 75 mm wooden blocks, C.P. waste fittings of 32 mm dia., mending good all damages and painting the brackets with two coats of approved paint. (ii) 550 mm X 400 mm size	Each	2.00	2208.00	4,416.00
55	Pg-41, It-3	Supplying, fitting and fixing Flat back urinal (half stall urinal) in white vitreous chinaware of approved make in position with brass screws on 75mm X 75 mm X 75 mm wooden blocks complete. (ii) 470 mm X 280 mm X 340 mm	Each	2.00	1497.00	2,994.00
56	Pg- 43/ 9 (iii)	Supplying,fitting and fixing approved brand P.V.C. CONNECTOR white flexible, with both ends coupling with heavy brass C.P. nut, 15 mm dia., integral flushing in white vitreous chinaware of approved make in cement concrete (6:3:1) with jhama chips complete. (Payment of concrete will be paid seperately)	Each	8.00	107.00	856.00
57	Pg-43, It-10(iv)	Supplying,fitting and fixing approved brand 32 mm dia.P.V.C. waste pipe, with PVC coupling at one end fitted with necessary clamps. C.I. brackets including two coats of painting to bracket etc	Each	6.00	91.00	546.00
58	Pg-3, It- 3(f)	Hand Shower(Health Faucet) with 1mtr Flexible Tube with Wall Hook(Equivalent to Code No.573 & Model -ALLIED of Jaquar or similar).	Each	6.00	1251.00	7,506.00
59	Pg-82, It-22(b)(ii)	Supplying, fitting and fixing towel rail with two brackets. (b) Aluminium (ii) 25 mm dia. and 600 mm long	Each	6.00	164.00	984.00
60	Pg-12, It-19-i(a)	Supplying, fitting and fixing PVC pipes of approved make of Schedule 80 (medium duty) conforming to ASTM D - 1785 and threaded to match with GI Pipes as per IS : 1239 (Part - I). with all necessary accessories, specials viz: socket, bend, tee, union, cross, elbo, nipple, longscrow, reducing socket, reducing tee, short piece etc. fitted with holder bats clamps, including cutting pipes, making threads,fitting, fixing etc. complete in all respect including cost of all necessary fittings as required, jointing materials and two coats of painting with approved paint in any position above ground. (Payment will be made on the centre line measurements of total pipe line including all specials. No separate payment will be made for accessories, specials. Payment for painting will be made seperately)	Each	4.00	414.00	1,656.00
61	Pg-12, It-19-i(a)	(a) For Exposed Work PVC Pipes, 25 mm	Each	3.00	107.00	856.00
62	Pg-12, It-19-i(b)	(b) For Concealed Work PVC Pipes, 15 mm	Mtr.	15.00	101.00	1,515.00
63	Pg-6, It-7(a)(i)	Chromium plated Bib Cock short body (Equivalent to Code No. 511 & Model - Tropical / Sumthing & Special of ESSCO or similar brand).	Each	6.00	539.00	3,234.00
64	Pg-6, It-7(b)(i)	Chromium plated Stop Cock (Equivalent to Code No: 513(A) & 513(B) & Model - Tropical / Sumthing Special of ESSCO or similar	Each	6.00	493.00	2,958.00
65	Pg-6, It-7(d)(i)	Chromium plated angular Stop Cock with wall flange (Equivalent to Code No. 5053 & Model - Florentine of Jaquar or similar brand).	Each	6.00	815.00	4,890.00
66	Pg- 45, It- 19(a)(i)	Supplying, fitting and fixing pillar cock of approved make. a) i) CP Pillar Cock - 15 mm. (Equivalent to Code No. 507 & Model - Tropical / Sumthing Special of ESSCO or similar brand).	Each	2.00	555.00	1,110.00
67	Pg-5, It-5(vii)	Supplying and fitting fixing of gunmetal wheel valve of approved brand and make tested to 21 Kg per sq. cm. 25 mm dia.(E5)	Mtr.	30.00	177.00	5,310.00
68	P-81, It-15(ii)	Supplying, fitting and fixing bevelled edged mirror 5.5 mm thick silver red as per I.S. 3438 / 1965 together with brass C.P. hinges. (ii) 600 mm X 450 mm	Each	2.00	484.00	968.00
69	Pg-81, It-16(a)(i)	Supplying, fitting and fixing glass shelf with aluminium guard rails. (a) Ordinary type with 5.5 mm sheet glass (i) 450 mm X 125 mm	Each	2.00	341.00	682.00
70	Pg-82, It-18(b)	Supplying, fitting and fixing soap holder. (b) Fibre glass	Each	6.00	58.00	348.00
71	Pg-6, Pg-213, It-21(A)(ii)	Supplying, fitting & fixing UPVC pipes AType and fittings conforming to IS:13592- 1992 with all necessary clamps nails, including making holes in walls, floor etc. cutting trenches in any soil through masonry concrete structures etc if necessary and mending good damages including joining with jointing materials (Spun Yarn, Valamoid/Bitumen/M-Seal etc) complete. (Supreme or Orinlast make) like as Rain water pipe	Each	6.00	539.00	3,234.00
			Mtr.	21.00	251.00	5,271.00

Sl. No.	SOR Page & Item	Description of Works	Unit	Total Qty	Rate	Amount (Rs.)
72	Pg-37, It-6(b)	Supplying P.V.C. water storage tank of approved quality with closed top with lid (Black) - Multilayer (b) 1000 litre capacity	Each	2.00	5128.00	10,256.00
73	pg-37,It-10 (i)(a)	Labour for hoisting plastic water storage tank. (i) Upto 1500 litre capacity. (a) Upto 1st story from G.L.	Each	2.00	96.00	192.00
74	Pg- 38, It - 13	Labour for punching hole in plastic water storage tank upto 50 mm dia.	Each	4.00	19.00	76.00
75	Pg-68, It-23,(A)(i)(b)	Supply of UPVC pipes (B Type) & fittings conforming to IS-13592- 1992.(A) (i) Single Socketed 3 Meter Length, (b) 110 mm	Mtr	36.00	292.00	10,512.00
76		(B) Fittings (i) Coupler, (b) 110 mm	Each	10.00	85.00	850.00
77		(ii) Plain Tee, (b) 110 mm	Each	14.00	85.00	1,190.00
78		(iii) Door Tee, (b) 110 mm	Each	12.00	195.00	2,340.00
79		ix) Bend 45°, (b) 110 mm	Each	12.00	89.00	1,068.00
80	SOR Page	xi) Door Bend (T.S.), (b) 110 mm	Each	9.00	147.00	1,323.00
81	Item	xvi) Pipe Clip, (b) 110 mm	Each	35.00	21.00	735.00
82		xvii) W.C. Connector (150 mm long) 125X 110(W/WC Ring) 75 mm closed top with lid (Black)	Each	6.00	142.00	852.00
83	Pg-37, It-6(b)	xxxii) Plain Floor Trap with Top tile & Strainer 75 mm	Each	9.00	144.00	1,296.00
84		L) Rubber Ring, (b) 110 mm	Each	18.00	17.00	306.00
85		C)Rubber Lubricant 500 ML	500 ML	1.00	187.00	187.00
86	pg-37,It-10 (i)(a)	D)Solvent Cement 250 ML	250 ML	1.00	103.00	103.00
87	Pg- 74, It- 24 (B)	Labour for fitting and fixing U.P.V.C. pipes for above ground work including cost of jointing materials etc. fitting and fixing all necessary specials, cutting pipes, cutting holes in total pipeline including specials. (B) Under ground, (ii) 110 mm dia.	Mtr	36.00	84.00	3,024.00
75	P- 212, It- 24 (A)(i) & (B), (c), (i) & (B), (d), (i)	Supply of UPVC pipes (B Type) & fittings conforming to IS-13592- 1992.(A) (i) Single Socketed 3 Meter Length, (b) 110 mm	Mtr	36.00	292.00	10,512.00
88	21 (A)(i), (B), (c), (i) & (B), (d), (i)	Supplying, fitting & fixing UPVC pipes A- Type and fittings conforming to IS:13592-1992 with all necessary clamps nails, including making holes in walls, floor etc. cutting trenches in any soil through masonry concrete structures etc if necessary and mending good damages including joining with jointing materials (Spun Yarn, Valamoid/Bitumen/M-Seal etc) complete.	Mtr	30.00	188.00	5,640.00
89		A) UPVC Pipes: (i) 75 mm. Dia.	Each	14.00	85.00	1,190.00
90		B) UPVC Fittings: c) Bend 87.5 degree (i) 75 mm. Dia.	Nos	6.00	84.00	504.00
91		B) UPVC Fittings: d) Shoe (i) 75 mm. Dia.	Nos	2.00	78.00	156.00
92	Pg-88, It-3(ii)A & 7th Corrigenda Volume II P- 212, Item No. - 21 (A)(i), (B), (c), (i) & (R), (d), (i)	Construction of septic tank of different capacities as per approved drawing with 1st class brick work cement mortar (1:4) including two 560 mm dia. R.C.C. manhole cover (heavy type) of approved make supplied, fitted and fixed in the 100mm thick R.C.C (1:1.5:3) top slab with necessary fittings, 20mm thick cement plaster (4 : 1) with neat cement finish to the internal surfaces and 15 mm thick cement plaster (4 : 1) to outside wall upto 200 mm below G.L floor finished with 25 mm thick grey artificial stone over 100 mm thick R.C.C(1:1.5:3) bottom slab including supplying, fitting and fixing all necessary specials, fittings, S.W. tees, C.I. foot rest etc. Labour for fitting and fixing U.P.V.C. pipes for above ground work including cost of jointing materials etc. fitting and fixing all necessary specials, cutting pipes, cutting holes in total pipeline including specials. (B) Under ground, (ii) 110 mm dia.	Each	1.00	48162.00	48,162.00
89		Supply of UPVC pipes (B Type) & fittings conforming to IS-13592- 1992.(A) (i) Single Socketed 3 Meter Length, (b) 110 mm	Mtr	30.00	188.00	5,640.00
90		A) With Pakur variety. (JSW/JSPL/SHYAM/SRMB/ELECTROSTEEL/SSL)				
91		B) UPVC Fittings: c) Bend 87.5 degree (i) 75 mm. Dia.	Nos	6.00	84.00	504.00
92	Pg-89, It-4 & 7th Corrigenda Volume II	Construction of circular soak well 2.5 metre deep in all types of sandy soils with dry brick work upto 1.6 metre from the bottom having 150 mm intermediate cement brick work (1:4) band all round and cement brick work (1:4) upto 0.90 metre from top with 20mm thick cement plastering (1:4) to inside face upto the depth of cement brick work, 15mm thick cement plaster (1:4) on outer face from top of the well upto G.L. and 6 mm thick cement plaster (1:4) on top of the R.C.C. cover slab including filling bottom 1.00 metre of inside of the well with brick metal (50 mm to 63 mm size) including R.C.C. cover slab of 100 mm thick with cement conc (1:1.5:3) with stone chips with necessary reinforcement and shuttering including one 560 mm dia. R.C.C. manhole cover (heavy type) of approved make supplied, fitted and fixed in the cover slab with necessary fittings, making necessary arrangements for pipe connections, excavation of well including shoring, dewatering and removing the excess earth from the premises as per direction complete in all respect with all costs of labour and materials. With 250 mm thick dry brick work and 250 mm thick cement brick work (1:6) and 1.00m inside dia. (Other than SAIL/TATA/RINL)	Each	1.00	16621.00	16,621.00
91	7th Corrigenda Volume II	(ii) For 20 users	Each	1.00	48162.00	48,162.00
92		A) With Pakur variety. (JSW/JSPL/SHYAM/SRMB/ELECTROSTEEL/SSL)				
93	Pg-89, It-4 & 7th Corrigenda	Construction of circular soak well 2,5 metre deep in all types of sandy soils with dry brick work upto 1.6 metre from the bottom having 150 mm intermediate cement brick work (1:4) band all round and cement brick work (1:4) upto 0.90 metre from top with 20mm thick cement plastering (1:4) to inside face upto the depth of cement brick work, 15mm thick cement plaster (1:4) on outer face from top of the well upto G.L. and 5 mm thick cement plaster (1:4) on top of the R.C.C. cover slab including filling bottom 1.00 metre of inside of the well with brick metal (50 mm to 63 mm size) including R.C.C. cover slab of 100 mm thick with cement conc (1:1.5:3) with stone chips				

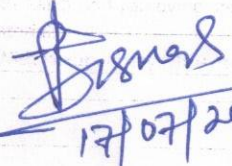
Sl. No.	SOR Page & Item	Description of Works	Unit	Total Qty	Rate	Amount (Rs.)
93	Pg-87, It-1(i) & 7th Corrigenda Volume ii	Constructing Inspection pit of inside measurement 600mm X 600mm X upto 600mm (depth) with 250 mm thick 1st. class brick work in cement mortar (1:4) on all sides, bottom of the pit consisting of 100 mm thick cement concrete (1:3:6) with stone chips over a layer of jhama brick flat soling, 15 mm thick (1:4) cement plaster to inside walls and out-side walls upto G.L. and 20 mm.thick (1:4) plaster to bottom of the pit, providing necessary invert with cement concrete (1:3:6) with stone chips as per direction, neat cement finishing to entire internal surfaces, top of the pit covered with 100 mm thick R.C.C. slab (1:1.5:3) with stone chips and necessary reinforcements upto 1% and shuttering including 6 mm thick cement plaster (1:4) in all external surfaces of the slab and one 560 mm dia. R.C.C. manhole cover of approved make supplied, fitted and fixed in the slab with necessary fittings, necessary earthwork in excavation in all sorts of soil, filling sides of the pit with earth and removing spoils after work complete in all respect with all costs of labour and materials. i) With Pakur variety (Other than SAIL/TATA/RINL).	Each	4.00	7248.00	28,992.00
Total Cost for (B) = Rs.						2,18,217.00
Total Cost (A + B) =						7,71,640.10
Add Provision for GST @ 18% =						1,38,895.22
Amount including GST =						9,10,535.32
Add Labour welfare Cess @1% =						9,105.35
Amount including GST & Cess =						9,19,640.67
Add Contingency @ 3% =						27,316.06
Grand Total =						9,46,956.73
Say =						9,46,957.00
(Rupees nine lakh forty six thousand nine hundred fifty seven only)						

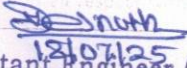
Sub Total = Rs. 7,73,783.28 ✓
 GST@ 18% = Rs. 1,39,280.99
 Cess@ 1% = Rs. 9,105.35
 Contingency@ 3% = Rs. 27,316.06
 Say = Rs. 9,49,586.84
 Say = Rs. 9,49,587.00



 18.06.25
Sub Assistant Engineer
Kanchrapara Municipality


 19.06.25
Assistant Engineer
Kanchrapara Municipality


Chairman
Kanchrapara Municipality



 17/07/2025
Junior Engineer
Basirhat Sub-Division, M.E. Dte.
Municipal Engineering Directorate
Deptt. of U.D. & M.A.
Government of West Bengal

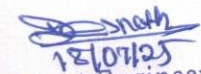

 18/07/25
Assistant Engineer (Civil)
North 24-Parganas Division, M.E.Dte.
Deptt. of U.D & M.A
Govt. of West Bengal



Executive Engineer
North 24-Parganas Division, M.E.Dte
Deptt of U D & M A
Govt. of West Bengal

ABSTRACT SHEET

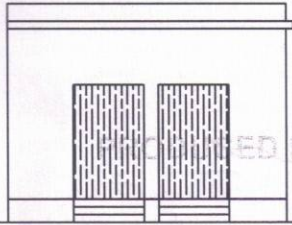
Name of the Work	Estimate of Civil work and non schedule work for construction of Community Toilet (Toilet seat 6 nos & Urinal-7 nos) at Kancharapara Shree Mandhari High School at ward no.16 under Kancharapara Municipality
A. Civil Part	773783.28
CGST + SGST@18%	139280.99
Total Including GST	913064.27
CESS @1%	9130.64
Total cost (including GST & CESS)	922194.91
Contingency@ 3%	27391.93
Total cost Part A (including GST,CESS & contengency)	949586.84
B. Supply of Sanitary item including GST,CESS	58560
Contingency@ 3%	1756.8
Total Amount Part B (including GST+CESS+Contengency)	60316.8
Total Amount Part A+ Part B (including GST+CESS+contengency)	1009903.64
Say	1009904


17/07/2025
Junior Engineer
Basirhat Sub-Division, M.E. Dte.
Municipal Engineering Directorate
Deptt. of U.D. & M.A.
Government of West Bengal

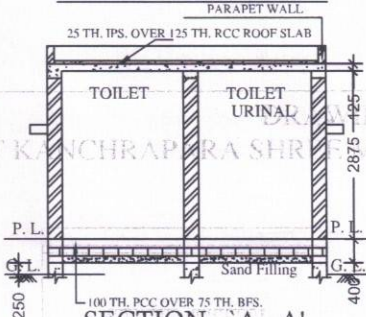

12/07/25
Assistant Engineer (Civil)
North 24-Parganas Division, M.E.Dte.
Deptt. of U.D & M.A
Govt. of West Bengal


Executive Engineer
North 24-Parganas Division, M.E.Dte
Deptt of U D & M.A
Govt. of West Bengal

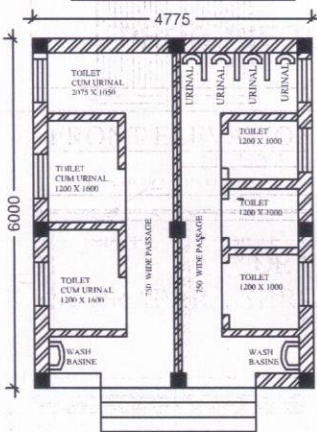
DRAWING FOR CONSTRUCTION OF TOILET BLOCK
 AT KANCHRAPARA SHREE MANDHARI HIGH SCHOOL WARD NO-16, UNDER KANCHRAPARA
 MUNICIPALITY
 MODEL-ULB
 (TOILET SEAT-6 NOS, URINAL -7 NOS)



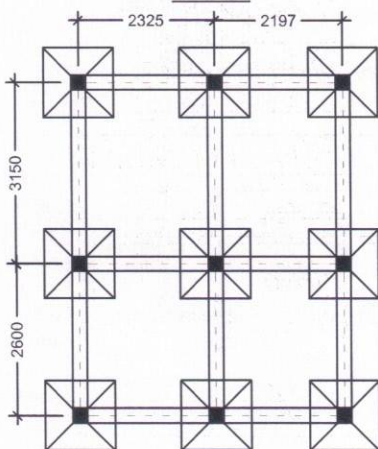
FRONT ELEVATION



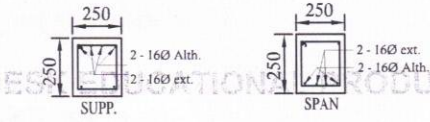
SECTION - 'A - A'



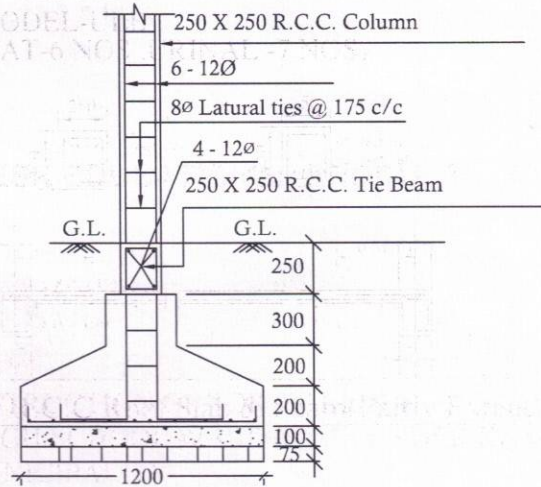
PLAN



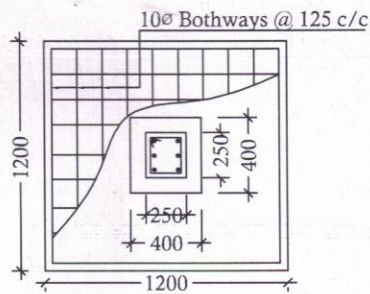
LAYOUT PLAN



Details Of R.C.C Roof Slab & Beam(Partly Extended)
 (SCALE + 1 : 25)



DETAILS OF R. C. C COLUMN(For Extended Portion)
 (SCALE - 1 : 25)



Asjad
 18.06.25
 Sub Assistant Engineer
 Kanchrapara Municipality

Asmita
 19.06.25
 Assistant Engineer
 Kanchrapara Municipality

Chairman
 Kanchrapara Municipality
 FOR OFFICE USE ONLY

PRODUCED BY AN AUTODESK EDUCATIONAL PRODUCT

PRODUCED BY AN AUTODESK EDUCATIONAL PRODUCT