

13

Civil & Sanitary Work Estimate For Construction of Public Toilet Block at Battala Ward no 10 within Tarakeswar Municipality

(ULB Model)

No. Of seat - Male - (W.C. -3) & Female - (W.C. -3) = Total (W.C. -6 & Urinal -2)

Rate As per PWD Building Works Schedule (Volume 1) With effect from 01.11.2017

| Sl. No. | Item Description & Item No. | | | | | | | Quantity | Rate | Unit | Amount |
|---------|---|------|--------|-------|-------|--------|-------|----------|----------|------|----------|
| | Details | Side | No. | L | B | H | QNTY. | | | | |
| 1 | Earth work in excavation of foundation trenches or drains, in all sorts of soil (including mixed soil but excluding laterite or sandstone) including removing, spreading or stacking the spoils within a lead of 75 m. as directed. The item includes necessary trimming the sides of trenches, levelling, dressing and ramming the bottom, bailing out water as required complete. (a) Depth of excavation not exceeding 1,500 mm. PWD Building Works schedule Page - 1, Item -2.a | | | | | | | 26.30 | 11927.00 | %Cum | 3136.80 |
| | Column | 6 | 1.500 | 1.5 | 1.1 | 14.850 | | | | | |
| | Tie Beam | 1 | 25.275 | 0.35 | 0.375 | 3.320 | | | | | |
| | Reservior | 1 | 2.5 | 2 | 1.625 | 8.130 | | | | | |
| | 26.300 | | | | | | | | | | |
| 2 | Single Brick Flat Soling of picked jhama bricks including ramming and dressing bed to proper level and filling joints with local sand. PWD Building Works schedule, Page- 14, Item - 1 (Corri. Page-01, Date-04-06-2018) | | | | | | | 46.99 | 357.00 | Sqm | 16775.43 |
| | Column | 6 | 1.500 | 1.5 | | 13.500 | | | | | |
| | Tie Beam | 1 | 25.275 | 0.25 | | 6.320 | | | | | |
| | Parti beam | 1 | 10.375 | 0.125 | | 1.300 | | | | | |
| | Floor | 1 | 5.1 | 3.7 | | 18.870 | | | | | |
| | Platform | 2 | 4 | 0.25 | | 2.000 | | | | | |
| | Reservior | 1 | 2.5 | 2 | | 5.000 | | | | | |
| 46.990 | | | | | | | | | | | |
| 3 | Supplying and laying Polythene Sheet (150gm / sq.m.) over damp proof course or below flooring or roof terracing or in foundation or in foundation trenches. PWD Building Works schedule, Page -47, Item -3 | | | | | | | 47.70 | 24.00 | Sqm | 1144.80 |
| | Open Space | 1 | 15 | 1.5 | | 22.500 | | | | | |
| | Approch Road | 1 | 12 | 2.1 | | 25.200 | | | | | |
| | 47.700 | | | | | | | | | | |
| 4 | Cement concrete with graded jhama khoa (30 mm size) excluding shuttering In ground floor and foundation. (a) 1:3:6 proportion. PWD Building Works schedule, Page -23, Item -B.1.a, (Corri. Page-09, Date-04-06-2018) Rate Analysis | | | | | | | 8.71 | 4783.42 | Cum | 41663.59 |
| | Column | 6 | 1.500 | 1.5 | 0.1 | 1.350 | | | | | |
| | Floor | 1 | 5.1 | 3.7 | 0.1 | 1.890 | | | | | |
| | Platform | 2 | 4 | 0.25 | 0.1 | 0.200 | | | | | |
| | Reservior | 1 | 2.5 | 2 | 0.1 | 0.500 | | | | | |
| | Open Space | 1 | 15 | 1.5 | 0.1 | 2.250 | | | | | |
| | Approch Road | 1 | 12 | 2.1 | 0.1 | 2.520 | | | | | |
| 8.710 | | | | | | | | | | | |

| | | | | | |
|----|--|-------|----------|------|----------|
| 5 | 25mm. thick damp proof course with cement concrete with stone chips (1:1.5:3) [with graded stone aggregate 10 mm nominal size] and admixture of water proofing compound as per manufacturer's specification followed by two coat of polymer based paint, (1st coat after 4 to 5 days of concrete laying and 2 nd coat just before brick masonry work) as directed (cost of water proofing compound & polymer based paint to be paid separately). (Chequering not required over concrete or painted surface). [Note: - Waterproofing as per item 9, polymer based paint as per item 8 (a) of subhead C of Section (C). PWD Building Works schedule, Page -47, Item -1 (Rate Analysis) | 3.71 | 184.11 | Sqm | 683.05 |
| | 1 29.7 0.125 3.710 | | | | |
| 6 | Brick work with 1st class bricks in cement mortar (1:4) (a) In foundation and plinth PWD Building Works schedule, Page -15, Item-7.a (Rate Analysis) | 6.07 | 5246.67 | Cum | 31847.29 |
| | GL 2 PL 1 25.275 0.250 0.450 2.840 | | | | |
| | Front Stair 2 1 0.25 0.3 0.150 | | | | |
| | 2 1 0.25 0.15 0.080 | | | | |
| | Reservior 1 8 0.25 1.5 3.000 | | | | |
| | 6.070 | | | | |
| 7 | 125 mm. thick brick work with 1st class bricks in cement mortar (1:4) in ground floor. PWD Building Works schedule, Page - 16, Item - 16 (Corri. Page-03, Date-04-06-2018) (Rate Analysis) | 62.74 | 714.46 | Sqm | 44825.22 |
| | Wall 1 29.7 2.375 70.540 | | | | |
| | Parapet 1 19.600 0.3 5.880 | | | | |
| | -1 8.000 1.8 -14.400 | | | | |
| | -8 0.450 0.3 -1.080 | | | | |
| | Platform 1 4.000 0.45 1.800 | | | | |
| | 62.740 | | | | |
| 8 | Earth work in filling in foundation trenches or plinth with good earth, in layers not exceeding 150 mm. including watering and ramming etc. layer by layer complete. (Payment to be made on the basis of measurement of finished quantity of work). (a) With earth obtained from excavation of foundation. PWD Building Works schedule, Page - 1, Item -3.a | 17.36 | 7754.00 | %Cum | 1346.09 |
| | 2/3rd of Earth work 0.66 26.30 17.36 | | | | |
| 9 | (A) Filling in foundation or plinth by silver sand in layers not exceeding 150 mm as directed and consolidating the same by thorough saturation with water, ramming complete including the cost of supply of sand. (payment to be made on measurement of finished quantity) PWD Building Works schedule, Page - 2, Item -4.a | 7.72 | 71181.00 | %Cum | 5495.17 |
| | 1 4.975 3.45 0.45 7.72 | | | | |
| 10 | Hire and labour charges for shuttering with centering and necessary staging upto 4 m using approved stout props and thick hard wood planks of approved thickness with required bracing for concrete slabs, beams and columns, lintels curved or straight including fitting, fixing and striking out after completion of works (upto roof of ground floor) (f) 25 mm to 30 mm shuttering without staging in foundation PWD Building Works schedule, Page -42, Item- 36.f | 28.87 | 209.00 | Sqm | 6033.83 |

| | | | | | | | | | | | | | | |
|----|--|----|--------|-------|-------|-----------------------------------|--|--|--|-------|-------|----------|------|----------|
| | Foundation | 24 | 1.20 | | 0.15 | 4.32 | | | | | | | | |
| | Tie Beam | 2 | 25.275 | | 0.3 | 15.17 | | | | | | | | |
| | Parti beam | 2 | 10.375 | | 0.25 | 5.19 | | | | | | | | |
| | Column | 24 | 0.3 | | 0.425 | 3.06 | | | | | | | | |
| | Platform | 2 | 0.75 | | 0.75 | 1.13 | | | | | | | | |
| | | | | | | 28.870 | | | | | | | | |
| 11 | Hire and labour charges for shuttering with centering and necessary staging upto 4 m using approved stout props and thick hard wood planks of approved thickness with required bracing for concrete slabs, beams and columns, lintels curved or straight including fitting, fixing and striking out after completion of works (upto roof of ground floor) (a) 25 mm to 30 mm thick wooden shuttering as per decision & direction of Engineer-In-Charge. PWD Building Works schedule, Page -42, Item- 36.a | | | | | | | | | | 71.17 | 334.00 | Sqm | 23770.78 |
| | Column | 24 | 0.25 | | 2.375 | 14.250 | | | | | | | | |
| | Roof Beam | 1 | 24.05 | | 0.175 | 4.210 | | | | | | | | |
| | Roof Beam | 1 | 21.05 | | 0.175 | 3.680 | | | | | | | | |
| | Lintel | 2 | 14.050 | | 0.2 | 5.620 | | | | | | | | |
| | Lintel btm | 1 | 8.000 | | 0.125 | 1.000 | | | | | | | | |
| | slab with b btm | 1 | 6.925 | 5.1 | | 35.320 | | | | | | | | |
| | Slab Side | 1 | 24.050 | | 0.125 | 3.010 | | | | | | | | |
| | Reservior | 1 | 2 | 1.5 | | 3.000 | | | | | | | | |
| | | 1 | 9 | | 0.12 | 1.080 | | | | | | | | |
| | | | | | | 71.170 | | | | | | | | |
| 12 | Ordinary Cement concrete (mix 1:1.5:3) with graded stone chips (20 mm nominal size) excluding shuttering and reinforcement, if any, in ground floor as per relevant IS codes. a) Pakur Variety /Chandil Variety PWD Building Works schedule, p-26 Item 10 a (Rate Analysis) | | | | | | | | | | 11.90 | 5468.54 | Cum | 65075.63 |
| | Colm foot | 6 | 1.2 | 1.2 | 0.15 | 1.300 | | | | | | | | |
| | | | | | | 6*0.15/3*(1*1+0.3*0.3+1*0.3)=.417 | | | | 0.420 | | | | |
| | Tool Column | 6 | 0.3 | 0.3 | 0.425 | 0.230 | | | | | | | | |
| | Column | 6 | 0.25 | 0.25 | 2.375 | 0.890 | | | | | | | | |
| | Tie Beam | 1 | 25.275 | 0.25 | 0.3 | 1.900 | | | | | | | | |
| | Parti beam | 1 | 10.375 | 0.25 | 0.25 | 0.650 | | | | | | | | |
| | Lintel | 1 | 14.050 | 0.125 | 0.2 | 0.350 | | | | | | | | |
| | Slab Beam | 1 | 21.05 | 0.25 | 0.175 | 0.920 | | | | | | | | |
| | Slab | 1 | 6.925 | 5.1 | 0.125 | 4.410 | | | | | | | | |
| | Platform | 2 | 1.000 | 1 | 0.1 | 0.200 | | | | | | | | |
| | Reservior | 1 | 2.5 | 2 | 0.125 | 0.630 | | | | | | | | |
| | | | | | | 11.900 | | | | | | | | |
| 13 | Reinforcement for reinforced concrete work in all sorts of structures including distribution bars, stirrups, binders etc initial straightening and removal of loose rust (if necessary), cutting to requisite length, hooking and bending to correct shape, placing in proper position and binding with 16 gauge black annealed wire at every intersection, complete as per drawing and direction. (a) For works in foundation and upto roof of ground floor/upto 4 m. (i) Tor steel/Mild Steel , JSPL/SWAYN/ELETRO/STEEL PWD Building Works schedule, Page - 43, Item - 40.a.i.1(Corri. 10th Page-01, Date-23-01-2020) (Rate Analysis) | | | | | | | | | | 1.296 | 54400.74 | M.T. | 70503.36 |

| | | | | | | | | | | | |
|----|---|----|--------|-------|-------|-------|--------|-------|--------|-----|----------|
| | Footing | 6 | 16 | 0.95 | 0.617 | 0.001 | 0.056 | | | | |
| | Column | 6 | 4 | 4.175 | 0.89 | 0.001 | 0.089 | | | | |
| | Stirup | 6 | 24 | 0.850 | 0.39 | 0.001 | 0.048 | | | | |
| | Tie beam | 3 | 5 | 5.975 | 1.56 | 0.001 | 0.140 | | | | |
| | | 3 | 5 | 4.45 | 1.56 | 0.001 | 0.104 | | | | |
| | Stirup | 1 | 170 | 1.05 | 0.39 | 0.001 | 0.070 | | | | |
| | PLBeam | 1 | 4 | 5.875 | 0.89 | 0.001 | 0.021 | | | | |
| | | 4 | 4 | 1.75 | 0.89 | 0.001 | 0.025 | | | | |
| | Stirup | 1 | 68 | 0.750 | 0.39 | 0.001 | 0.020 | | | | |
| | Lintel | 2 | 4 | 5.875 | 0.617 | 0.001 | 0.029 | | | | |
| | | 2 | 4 | 1.45 | 0.617 | 0.001 | 0.007 | | | | |
| | Stirup | 1 | 82 | 0.650 | 0.39 | 0.001 | 0.021 | | | | |
| | Roof Beam | 2 | 5 | 5.975 | 1.56 | 0.001 | 0.093 | | | | |
| | | 3 | 5 | 4.45 | 1.56 | 0.001 | 0.104 | | | | |
| | Stirup | 1 | 170 | 1.05 | 0.39 | 0.001 | 0.070 | | | | |
| | Slab | 2 | 45 | 5.05 | 0.39 | 0.001 | 0.177 | | | | |
| | less l/3 | -1 | 15 | 1.4 | 0.39 | 0.001 | -0.008 | | | | |
| | | 2 | 33 | 6.875 | 0.39 | 0.001 | 0.177 | | | | |
| | less l/3 | -1 | 11 | 1.9 | 0.39 | 0.001 | -0.008 | | | | |
| | UGR | 1 | 19 | 1.65 | 0.39 | 0.001 | 0.012 | | | | |
| | | 1 | 14 | 2.25 | 0.39 | 0.001 | 0.012 | | | | |
| | Lapping | 21 | 1 | 0.8 | 1.56 | 0.001 | 0.026 | | | | |
| | Lapping | 21 | 1 | 0.6 | 0.89 | 0.001 | 0.011 | | | | |
| | | | | | | | 1.2960 | | | | |
| 14 | Artificial stone in floor, dado, staircase etc with cement concrete (1:2:4) with stone chips, laid in panels as directed with topping made with ordinary or white cement (as necessary) and marble dust in proportion (1:2) including smooth finishing and rounding off corners including raking out joints or roughening of concrete surface and application of cement slurry before flooring..... 25 mm. thick For roofing PWD Building Works schedule, P-48, It-6.ii (Rate Analysis) | | | | | | | 80.07 | 312.95 | Sqm | 25057.91 |
| | roof | 1 | 6.675 | 4.85 | | | 32.370 | | | | |
| | Open Space | 1 | 15 | 1.5 | 0.1 | | 22.500 | | | | |
| | Approch Road | 1 | 12 | 2.1 | 0.1 | | 25.200 | | | | |
| | | | | | | | 80.070 | | | | |
| 15 | Neat cement punning about 1.5mm thick in wall, dado, window sill, floor etc. NOTE:Cement 0.152 cu.m per100 sq.m. PWD Building Works schedule, P-192, It. No. 15 (Rate Analysis) | | | | | | | 29.22 | 32.75 | Sqm | 956.96 |
| | Below Plinth | 1 | 14.650 | | 0.45 | | 6.590 | | | | |
| | Reservior | 1 | 7 | | 1.5 | | 10.500 | | | | |
| | | 1 | 2.5 | 2 | | | 5.000 | | | | |
| | | 2 | 2 | 1.5 | | | 6.000 | | | | |
| | | 1 | 9 | | 0.125 | | 1.130 | | | | |
| | | | | | | | 29.220 | | | | |
| 16 | Labour for Chipping of concrete surface before taking up Plastering work. PWD Building Works schedule, P-192, It-1 | | | | | | | 95.69 | 21.00 | Sqm | 2009.49 |
| | Lintel side | 2 | 14.050 | | 0.2 | | 5.620 | | | | |
| | intel btm | 1 | 8.000 | | 0.125 | | 1.000 | | | | |
| | Beam | 2 | 21.05 | | 0.175 | | 7.370 | | | | |
| | Slab bottom | 1 | 6.925 | 5.1 | | | 35.320 | | | | |
| | Slab side | 1 | 24.050 | | 0.125 | | 3.010 | | | | |
| | For roof treatment | 1 | 6.675 | 4.85 | | | 32.370 | | | | |
| | Reservior | 2 | 2 | 1.5 | | | 6.000 | | | | |
| | | 1 | 2.5 | 2 | | | 5.000 | | | | |
| | | 1 | 9 | | 0.125 | | 1.130 | | | | |
| | | | | | | | 96.820 | | | | |

| | | | | | |
|----|--|-------|---------|-------|----------|
| 17 | Plaster (to wall, floor, ceiling etc.) with sand and cement mortar including rounding off or chamfering corners as directed and raking out joints including throating, nosing and drip course, scaffolding/staging where necessary (Ground floor).[Excluding cost of chipping over concrete surface] (i) With 1:6 cement mortar (c) 15 mm thick plaster PWD Building Works schedule, P-189 It- No. 1 (Rate Analysis) | 92.22 | 141.53 | Sqm | 13051.90 |
| | Below plinth | 1 | 14.650 | 0.45 | 6.590 |
| | Outer wall | 1 | 5.725 | 2.55 | 14.600 |
| | Outer wall | 1 | 14.125 | 0.60 | 8.480 |
| | Deduction | -1 | 8.000 | 1.80 | -14.400 |
| | Iner Wall | 6 | 5.1 | 0.6 | 18.360 |
| | | 2 | 5.7 | 0.6 | 6.840 |
| | | 2 | 5.725 | 0.6 | 6.870 |
| | Parapet wall | 1 | 22.25 | 0.725 | 16.130 |
| | Reservior | 1 | 7 | 1.5 | 10.500 |
| | | 2 | 2.5 | 2 | 10.000 |
| | | 2 | 2 | 1.5 | 6.000 |
| | | 1 | 9 | 0.25 | 2.250 |
| | | | | | 92.220 |
| 18 | Plaster (to wall, floor, ceiling etc.) with sand and cement mortar including rounding off or chamfering corners as directed and raking out joints including throating, nosing and drip course, scaffolding/staging where necessary (Ground floor).[Excluding cost of chipping over concrete surface] (ii) With 1:4 cement mortar (c) 10 mm thick plaster PWD Building Works schedule, P-189 It- No. 1 (ii)(c) (Rate Analysis) | 35.32 | 126.53 | Sqm | 4469.04 |
| | Slab bottom | 1 | 6.925 | 5.1 | 35.320 |
| 19 | Supplying, fitting and fixing fibre reinforced polymer (FRP) Composite door frame as per approved section with glass fibre reinforced plastic moulded skins and a special sandwich core, so as to impart monolitaheic composite structure as per approved technology of Department of Science and Technology (DST) to satisfy IS: 4020 door testing performance criteria.. (i) 66mm x 90mm PWD Building Works schedule, P-115, It - 3 (i) | 34.80 | 497.00 | Mtr | 17295.60 |
| | | 8 | 4.35 | | 34.800 |
| 20 | Supplying, fitting & fixing fibre reinforced polymer (FRP) Composite door shutters as per approved design with glass fibre reinforced plastic moulded skins and a special sandwich core, so as to impart monolitaheic composite structure as per approved technology of Department of Science and Technology (DST) to satisfy IS:4020 door testing performance criteria. In ground floor. ii) 25 mm thick P-125, It- 14(ii) | 9.21 | 2581.00 | Sqm | 23771.01 |
| | | 8 | 1.734 | 0.664 | 9.210 |
| 21 | Anodised aluminium barrel / tower / socket bolt (full covered) of approved manufactured from extruded section conforming to I.S. 204/74 fitted and fixed with cadmium plated screws . (vii) 225mm long x 10mm dia. bolt. PWD Building Works schedule, P-144, It No. 26 (vii) | 8.00 | 84.00 | Each | 672.00 |
| | | 8 | 1.00 | | 8.000 |

| | | | | | |
|----|---|--------|---------|------|----------|
| 22 | Iron butt hinges of approved quality fitted and fixed with steel screws, with ISI mark. (viii) 100mm X 75mm X 3.50mm. PWD Building Works schedule, P-140, It No. -5 (viii) | 24.00 | 66.00 | Each | 1584.00 |
| | 8 3.00 24.000 | | | | |
| 23 | Anodised aluminium decorative handle (hexagonal / fluted) of approved quality fitted and fixed complete. (i) 150mm plate x 10mm dia rod x 12mm hexagonal/fluted. PWD Building Works schedule, Page -146 . Item no-31,(i) | 16.00 | 87.00 | Each | 1392.00 |
| | 8 2.00 16.000 | | | | |
| 24 | Iron hasp bolt of approved quality fitted and fixed complete (oxidised) with 16mm dia rod with concrete bolt and round fitting. .b)250mm long. PWD Building Works schedule, Page -141 . Item no-10 b) | 8.00 | 159.00 | Each | 1272.00 |
| | 8 1.00 8.000 | | | | |
| 25 | Rendering the Surface of walls and ceiling with White Cement base WATER PROOF wall putty of approved make & brand.(1.5 mm thick) In Ground Floor PWD Building Works schedule, PWD, P- 198, I - 5 | 120.95 | 122.00 | Sqm | 14755.90 |
| | Same as Plaster Item - Plinth plaster 120.95 | | | | |
| 26 | (b) Priming one coat on timber or plastered surface with synthetic oil bound primer of approved quality including smoothening surfaces by sand papering etc. PWD Building Works schedule, Page -200 . Item no- 1 (b) | 120.95 | 38.00 | Sqm | 4596.10 |
| | Same as Plaster Item - Plinth plaster 120.95 | | | | |
| 27 | (A) Painting with best quality synthetic enamel paint of approved make and brand including smoothening surface by sand papering etc. including using of approved putty etc. on the surface, if necessary : Page - 200 . Item no- 1 (b) (a) On timber or plastered surface : With super gloss (hi-gloss) - (iv) Two coats (with any shade except white) PWD Building Works schedule, Page -200 . Item no- 2(A)(a)(iv) | 120.95 | 81.00 | Sqm | 9796.95 |
| | Same as Plaster Item - Plinth plaster 120.95 | | | | |
| 28 | (a) M.S.or W.I. Ornamental grill of approved design joints continuously welded with M.S, W.I. Flats and bars of windows, railing etc. fitted and fixed with necessary screws and lugs in ground floor.. (i) Grill weighing above 10 Kg./sq.mtr and up to 16 Kg./sq. mtr. PWD Building Works schedule, P-104 Item-13 A (i) (3rd Corrigendam Page No 91) | 2.14 | 9888.00 | Qntl | 21160.32 |
| | Grill 8 0.60 0.45 0.16 0.350 | | | | |
| | Door 2 1.00 1.95 0.16 0.620 | | | | |
| | For Railing 2 2.75 1 0.16 0.880 | | | | |
| | Box for pump 5 0.60 0.6 0.16 0.290 | | | | |
| | 2.140 | | | | |
| 29 | a) Priming one coat on steel or other metal surface with synthetic oil bound primer of approved quality including smoothening surfaces by sand papering etc. PWD Building Works schedule, P/200 Item-1(a) | 13.36 | 29.00 | Sqm | 387.44 |
| | 8 0.60 0.45 2.160 | | | | |
| | 2 1.00 1.95 3.900 | | | | |
| | 2 2.75 1 5.500 | | | | |
| | 5 0.60 0.6 1.800 | | | | |
| | 13.360 | | | | |

| | | | | | |
|----|---|--------|---------|-----|-----------|
| 30 | (A) Painting with best quality synthetic enamel paint of approved make and brand including smoothening surface by sand papering etc. including using of approved putty etc. on the surface, if necessary : (b) On steel or other metal surface : (iv) Two coats (with any shade except white) PWD Building Works schedule, P-200 Item-2(b)(iv) | 13.36 | 79.00 | Sqm | 1055.44 |
| | 8 0.60 0.45 2.160 | | | | |
| | 2 1.00 1.95 3.900 | | | | |
| | 2 2.75 1 5.500 | | | | |
| | 5 0.60 0.6 1.800 | | | | |
| | 13.360 | | | | |
| 31 | Supplying and laying true to line and level vitrified tiles of approved brand (size not less than 600 mm X 600 mm X 10 mm thick) in floor, skirting etc. set in 20 mm sand cement mortar (1:4) and 2 mm thick cement slurry back side of tiles using cement @ 2.91Kg./sqM or using polymerised adhesive (6 mm thick layer applied directly over finished artificial stone floor/Mosaicdirection of Engineer-in-Charge. (White cement, synthetic adhesive and grout material to be supplied by the contrr]e) I (I) With application slurry @1.75 kg/ Sq.m, 20 mm sand cement mortar (1:4) & 2 mm thick cement slurry at back side of tiles, 0.2 kg/ Sq.m white cement for joint filling with pigment. (A) Deep Colour & White PWD Building Works schedule, Page-66 Item-36 (A) (3rd Corrigendam , Page -36) | 23.70 | 1695.00 | Sqm | 40171.50 |
| | Stair 2 1 0.95 1.900 | | | | |
| | floor 1 5.35 3.7 19.800 | | | | |
| | Platform 2 1 1 2.000 | | | | |
| | 23.700 | | | | |
| 32 | Supplying, fitting & fixing 1st quality Ceramic tiles in walls and floors to match with the existing work & 4 nos. of key stones (10mm) fixed with araldite at the back of each tile & finishing the joints with white cement mixed with colouring oxide if required to match the colour of tiles including roughening of concrete surface, if necessary or by synthetic adhesive & grout materials etc. B) Wall b) Area of each tile above 0.09 Sq.m ii) Other than Coloured decorative including white PWD Building Works schedule, page-64, Item:35.(B.) (b).(ii) (3rd Corrigendam ,Page 36) | 114.23 | 1041.00 | Sqm | 118913.43 |
| | Out side 1 14.125 1.95 27.540 | | | | |
| | Door -2 1 1.8 -3.600 | | | | |
| | Door frame side 2 4.6 0.125 1.150 | | | | |
| | Inner 2 5.7 1.95 22.230 | | | | |
| | 6 5.1 1.95 59.670 | | | | |
| | 1 13.45 1.95 26.230 | | | | |
| | Door frame side 8 4.35 0.075 2.610 | | | | |
| | Less Door -16 0.75 1.8 -21.600 | | | | |
| | 114.230 | | | | |

| | | | | | |
|----|--|--------|---------|-------|---------|
| 33 | Supplying profiles of required section made of Aluminium Alloy Extrusions conforming to IS: 732-1983 and IS: 1285- 1975; Anodized (with required film thickness and specified colour / natural) matt finished conforming to IS: 1868-1983 for fabrication of composite door, sliding & casement windows, partitions, formed of basic sections of any ISI embossed / certified make and brand as per direction of Engineer - In- Charge. (Payment will be made on finished length of the work). (A) In 10-12 Micron thickness Anodizing film l) Natural white h) Louvered window. Top, bottom and side member. PWD Building Works schedule, PWD, P-233, I- 1(h) i | 16.80 | 183.00 | M | 3074.40 |
| | 8 2.1 16.800 | | | | |
| 34 | ii) Louvered Section. | 14.40 | 658.00 | M | 9475.20 |
| | 24 0.6 14.400 | | | | |
| 35 | iii) Cleat angle (Non-anodized). | 12.96 | 263.00 | M | 3408.48 |
| | 24 0.54 12.9600 | | | | |
| 36 | Labour charge for fabrication and installation of composite door, window, partitions made from anodized extruded alloy aluminium sections for the following units:- (A) Glazed aluminium sliding windows made of extruded and anodized including all incidental charges, adhesive, joineries such as screw, cleat angle etc. but excluding the cost of extruded aluminium sections, glass, neoprene / EPDM gasket, locking arrangement and rollers. v) Louvered window. PWD Building Works schedule SOR, PWD, P-239, I- 2 (v) | 2.16 | 730.00 | Sqm | 1576.80 |
| | 8 0.6 0.45 2.160 | | | | |
| 37 | Supplying bubble free float glass of approved make and brand conforming to IS: 2835-1987. iv) 5mm thick coloured / tinted / smoke glass. PWD Building Works schedule, P-243, I -9 | 2.16 | 585.00 | Sq.M. | 1263.60 |
| | 8 0.6 0.45 2.160 | | | | |
| 38 | Painting block letters or digits in Black Japan or any approved paint as per direction. e) Size above 7.5 cm. and upto 10 cm. PWD Building Works schedule, P-268, It-17(e) | 450.00 | 12.00 | Each | 5400.00 |
| 39 | Supplying, fitting and fixing 18 mm thick marble partition slab with chawk doongri marbel square cut, both sides polished with two front corners rounded and edges polished. Sanitary and plumbing work schedule P-81, It-13 | 0.72 | 1426.00 | Sqm | 1026.72 |
| | 1 1.2 0.6 0.72 | | | | |
| 40 | Supplying and Planting of different plant / trees (Supplying well grown plants bushy and healthy, minimum height as specified i.e. exposed height including all leads & lift, carriage, handling, manuring, applying pesticide and fertilizer etc. . i) Furcaria variegated 10-12 leaves in height 20-30cm in earthen pots of size 25cm. PWD Building Works schedule, Page -261, It- 9 (i) | 12.00 | 162.00 | Each | 1944.00 |
| 41 | x) Ficus blakii (F. Vivicon) well branched (Bushy) of height 120cm - 135 cm in earthen pot of size 30cm. PWD Building Works schedule, Page -261, It- 9 (x) | 9.00 | 187.00 | Each | 1683.00 |
| 42 | xxvi) Areca Palm 4 - 5 suckers of height 90 cm to 105 cm in earthen pots of size 25 cm. PWD Building Works schedule, Page -261, It- 9 (xxvi) | 6.00 | 127.00 | Each | 762.00 |

| | | | | | |
|----|---|-------|---------|------|----------|
| 43 | Supplying, fitting and fixing Anglo-Indian W.C. in white glazed vitreous china ware of approved make complete in position with necessary bolts, nuts etc. a) With 'P' trap (with vent) PWD S&P Schedule, page-79, item no -3 (a) | 6.00 | 3104.00 | Each | 18624.00 |
| 44 | Supplying, fitting and fixing Closet seat of approved make with lid and C.P. hinges, rubber buffer and brass screws complete .(b) Anglo Indian (i) Plastic (hallow type) White PWD S&P Schedule, page-81,item no 10.b.i | 6.00 | 485.00 | Each | 2910.00 |
| 45 | Supplying, fitting and fixing Shallow water closet Indian pattern (I.P.W.C.) of approved make in white vitreous chinaware in position (excluding cost of concrete for fixing). (i) 580 mm long PWD S&P Schedule, page-79,item no -1 (i) | 1 | 973.00 | Each | 973.00 |
| 46 | Supplying, fitting and fixing Flat back urinal (half stall urinal) in white vitreous chinaware of approved make in position with brass screws on 75 mm X 75 mm X 75 mm wooden blocks complete (ii) 470 mm X 280 mm X 340 mm PWD S&P Schedule, page.80,item no-6/(ii) | 1.00 | 945.00 | Each | 945.00 |
| 47 | Supplying, fitting and fixing Squating plate with integral flushing in white vitreous chinaware of approved make in cement concrete (6:3:1) with jhama chips complete. (Payment of concrete will be paid seperately). (i) 450 mm X 350 mm Schedule, (P - 80, Item. No. - 7 , PWD S&P | 1.00 | 881.00 | Each | 881.00 |
| 48 | Supplying, fitting and fixing 10 litre P.V.C. low-down cistern conforming to I.S. specification with P.V.C. fittings complete,C.I. brackets including two coats of painting to bracket etc. PWD S&P Schedule, Page No.-36 Item No.-2, | 6.00 | 1015.00 | Nos | 6090.00 |
| 49 | Supplying,fitting and fixing 32 mm dia. Flush Pipe of approved make with necessary fixing materials and clamps complete. i) Polythene Flush Pipe PWD S&P Schedule, Page no 81. Item no. 11(i) | 6.00 | 155.00 | Each | 930.00 |
| 50 | Supplying, fitting and fixing urinal flush pipe fittings of approved brand. (a) C.P. urinal flush pipe fittings range of one PWD S&P Schedule, S.P.81,item-12/a | 2.00 | 414.00 | Each | 828.00 |
| 51 | Supplying, fitting and fixing white vitreous china best quality approved make wash basin with C.I. brackets on 75 mm X 75 mm wooden blocks, C.P. waste fittings of 32 mm dia., mending good all damages and painting the brackets with two coats of approved paint. (ii) 550 mm X 400 mm size PWD S&P Schedule P-41 It 2 (ii) | 4.00 | 2208.00 | Each | 8832.00 |
| 52 | Supplying,fitting and fixing approved brand P.V.C. CONNECTOR white flexible, with both ends coupling with heavy brass C.P. nut, 15 mm dia., (iii) 600 mm long PWD S&P Schedule, Page No.-43 Item No.-9-iii PWD,- | 10.00 | 107.00 | Each | 1070.00 |
| 53 | Supplying,fitting and fixing approved brand 32 mm dia.P.V.C. waste pipe, with PVC coupling at one end fitted with necessary clamps. (iv) 1050 mm long each PWD S&P Schedule, Page No.-43 Item No. 10-iv | 6.00 | 91.00 | Each | 546.00 |

| | | | | | |
|----|--|-------|---------|------|---------|
| 54 | (f) Hand Shower(Health Faucet) with 1mtr Flexible Tube with Wall Hook(Equivalent to Code No.573 & Model -ALLIED of Jaquar or similar). PWD S&P Schedule, Page No.-3 Item No.- 3 f, | 4.00 | 1251.00 | Each | 5004.00 |
| 55 | (a) (i) Chromium plated Bib Cock short body (Equivalent to Code No. 511 & Model - Tropical / Sumthing Special of ESSCO or similar brand). PWD S&P Schedule, Page No.-6 Item No.-7-a-i | 8.00 | 539.00 | Each | 4312.00 |
| 56 | (b) (i) Chromium plated Stop Cock (Equivalent to Code No. 513(A) & 513(B) & Model - Tropical / Sumthing Special of ESSCO or similar PWD S&P Schedule, Page No.-6 Item No.-7-b-i | 5.00 | 493.00 | Each | 2465.00 |
| 57 | Supplying, fitting and fixing shower of approved brand and make. (ii) Chromium plated round shower with revolving joint (Equivalent to Code No. 541(N) & Model - Tropical / Sumthing Special of ESSCO or similar brand). PWD S&P Schedule, Page No.-3 Item No.-3- a-ii | 1.00 | 360.00 | Each | 360.00 |
| 58 | (iii) Chromium plated shower arm 240 mm long (Equivalent to Code No. 536(A) & Model - Tropical / Sumthing Special of ESSCO or similar brand). Page No.-3 Item No.-3-a-(iii), PWD,VOL-II , 2017-18 | 1 | 309.00 | Each | 309.00 |
| 59 | Chromium plated angular Stop Cock with wall flange (Equivalent to Code No. 5053 & Model - Florentine of Jaquar or similar brand). PWD S&P Schedule, Page No.-6 Item No.-7-d-i, | 11.00 | 815.00 | Each | 8965.00 |
| 60 | Supplying, fitting and fixing pillar cock of approved make. a) (i) CP Pillar Cock - 15 mm. (Equivalent to Code No. 507 & Model - Tropical / Sumthing Special of ESSCO or similar brand). (P. No. - 45, Item. No. - 19(a)i, Pwd Sanitary Plumbing Schedule 2017) | 4.00 | 555.00 | Each | 2220.00 |
| 61 | Supplying, fitting and fixing PVC pipes of approved make of Schedule 80 (medium duty) conforming to ASTM D - 1785 and threaded to match with GI Pipes as per IS : 1239 (Part - I). with all necessary accessories, specials viz. socket, No separate payment will be made for accessories, specials. Payment for painting will be made separately) (a) For Exposed Work PVC Pipes, 25 mm Page No.-12 Item No.-19-i(a), PWD,VOL-II , 2017-18 | 36.00 | 177.00 | Mtr | 6372.00 |
| 62 | (a) (a) For Exposed Work PVC Pipes, 15 mm Page No.-12 Item No.-19-i(a), PWD,VOL-II , 2017-18 | 18.00 | 101.00 | Mtr | 1818.00 |
| 63 | (b) For Concealed Work PVC Pipes, 15 mm Page No.-12 Item No.-19-i(b), PWD,VOL-II , 2017-18 | 15.00 | 137.00 | Mtr | 2055.00 |
| 64 | Supplying and fitting fixing of gunmetal wheel valve of approved brand and make tested to 21 Kg per sq. cm. 25 mm dia(E5) PWD S&P Schedule, P-5 It-5,vii), | 2.00 | 778.00 | Each | 1556.00 |
| 65 | Supplying P.V.C. water storage tank of approved quality with closed top with lid (Black) - Multilayer (b) 1000 litre capacity PWD S&P Schedule, page.37,item no-6 (b). | 1.00 | 5128.00 | Each | 5128.00 |
| 66 | Labour for hoisting plastic water storage tank. (i) Upto 1500 litre capacity. (a) Upto 1st story from G.L. PWD S&P Schedule, page.37,item no-10 (i)(a) | 1.00 | 96.00 | Each | 96.00 |

| | | | | | |
|----|---|-------|---------|--------|----------|
| 67 | Labour for punching hole in plastic water storage tank upto 50 mm dia. PWD S&P Schedule, (P. No. - 38, Item. No. - 13 | 2.00 | 19.00 | Each | 38.00 |
| 68 | Supply of UPVC pipes (B Type) & fittings conforming to IS-13592-1992.(A) (i) Single Socketed 3 Meter Length, (b) 110 mm PWD S&P Schedule, Page No.-68 Item No. 23,(A)(i)(b) | 36.00 | 292.00 | Mtr | 10512.00 |
| 69 | (B) Fittings (i) Coupler, (b) 110 mm | 12.00 | 85.00 | Each | 1020.00 |
| 70 | (ii) Plain Tee, (b) 110 mm | 12.00 | 85.00 | Each | 1020.00 |
| 71 | (iii) Door Tee, (b) 110 mm | 9.00 | 195.00 | Each | 1755.00 |
| 72 | ix) Bend 45°, (b) 110 mm | 10.00 | 89.00 | Each | 890.00 |
| 73 | xi) Door Bend (T.S.), (b) 110 mm | 7.00 | 147.00 | Each | 1029.00 |
| 74 | xvi) Pipe Clip, (b) 110 mm | 30.00 | 21.00 | Each | 630.00 |
| 75 | xvii) W.C. Connector (150 mm long) 125 X 110(W/WC Ring) 75 mm | 6.00 | 142.00 | Each | 852.00 |
| 76 | xxxii) Plain Floor Trap with Top tile & Strainer 75 mm | 4.00 | 144.00 | Each | 576.00 |
| 77 | L) Rubber Ring, (b) 110 mm | 30.00 | 17.00 | Each | 510.00 |
| 78 | C)Rubber Lubricant 500 ML | 3.00 | 187.00 | 500 ML | 561.00 |
| 79 | D)Solvent Cement 250 ML | 3.00 | 103.00 | 250 ML | 309.00 |
| 80 | Labour for fitting and fixing U.P.V.C. pipes for above ground work including cost of jointing materials etc. fitting and fixing all necessary specials, cutting pipes, cutting holes in total pipeline including specials. (B) Under ground, (ii) 110 mm dia. PWD S&P Schedule, (P. - 74, Item. No. - 24 (B) | 36.00 | 84.00 | Mtr | 3024.00 |
| 81 | Supplying, fitting & fixing UPVC pipes A- Type and fittings conforming to IS:13592-1992 with all necessary clamps nails, including making holes in walls, floor etc. cutting trenches in any soil through masonry concrete structures etc if necessary and mending good damages including joining with jointing materails (Spun Yarn, Valamoid/Bitumen/M-Seal etc) complete. A) UPVC Pipes: (i) 75 mm. Dia. (P. - 212, Item. No. - 21 (A)(i) , (B),(c),(i) & (B), (d),(i), Pwd volume- i, 2017) | 15.00 | 188.00 | Mtr | 2820.00 |
| 82 | B) UPVC Fittings: c) Bend 87.5 degree (i) 75 mm. Dia. | 4.00 | 95.00 | Mtr | 380.00 |
| 83 | B) UPVC Fittings: d) Shoe (i) 75 mm. Dia. | 4.00 | 78.00 | Mtr | 312.00 |
| 84 | Constructing Inspection pit of inside measurement 600mm X 600mm X upto 600mm (depth) with 250 mm thick 1st. class brick work in cement mortar (1:4) on all sides, bottom of the pit consisting of 100 mm thick cement concrete (1:3:6) with filling sides of the pit with earth and removing spoils after work complete in all respect with all costs of labour and materials. i) With Pakur variety (Other than SAIL/TATA/RINL). PWD S&P Schedule, S.P.87,Item No-1/(i), 7th Corrigenda Volume ii | 4.00 | 7027.00 | Each | 28108.00 |

| | | | | | |
|---|--|---------------------|----------|------|-------------------|
| 85 | Construction of septic tank of different capacities as per approved drawing with 1st class brick work in cement mortar (1:4) plaster work and artificial stone flooring is to be done with admixture of water proofing compound @ 0.5% by weight of cement with all costs of labour and materials. (iii) For 30 users A) With Pakur variety. (JSW/JSPL/SHYAM/SRMB/ELECTROSTEEL/SSL) PWD S&P Schedule, S.P.88,Item No-3(iii)(A) 7th Corrigenda Volume ii | 1.00 | 61382.00 | Each | 61382.00 |
| 86 | Construction of circular soak well 2.5 metre deep in all types of sandy soils with dry brick work upto 1.6 metre from the bottom having 150 mm intermediate cement brick work (1:4) band all round and cement brick work (1:4) upto 0.90 metre direction complete in all respect with all costs of labour and materials. With 250 mm thick dry brick work and 250 mm thick cement brick work (1:6) and 1.00m inside dia. (Other than SAIL/TATA/RINL) S.P.89,Item No-4 7th Corrigenda Volume ii | 1.00 | 16375.00 | Each | 16375.00 |
| 87 | Supplying, fitting and fixing towel rail with two brackets. (a) C.P. over brass (ii) 25 mm dia. and 600 mm long PWD S&P Schedule, p No 82 I No- 22 (a)(ii) | 8.00 | 430.00 | Each | 3440.00 |
| 88 | Supplying, fitting and fixing cast iron raised rain proof tank cover 500 mm dia. with locking arrangements (weighing not less than 12 kg). PWD S&P Schedule, . page-37,item no -8 | 1.00 | 1263.00 | Each | 1263.00 |
| 89 | Supplying, fitting and fixing bevelled edged mirror 5.5 mm thick silver red as per I.S. 3438 / 1965 together with brass C.P. hinges. (ii) 600 mm X 450 mm PWD S&P Schedule, P-81, It-15(ii) | 4.00 | 484.00 | Each | 1936.00 |
| 90 | Supplying, fitting and fixing soap holder. (b) Fibre glass Sanitary and plumbing work schedule P-82, It-18(b) | 10.00 | 58.00 | Each | 580.00 |
| 91 | Supplying, fitting and fixing glass shelf with aluminium guard rails. (a) Ordinary type with 5.5 mm sheet glass (i) 450 mm X 125 mm Sanitary and plumbing work schedule P-81, It-16(a)(i) | 8.00 | 341.00 | Each | 2728.00 |
| Sub Total Of (A) | | | | | 869623.23 |
| | | Add S.G.S.T. @ | 9% | | 78266.09 |
| | | Add C.G.S.T. @ | 9% | | 78266.09 |
| Cost Of Civil & Sanitary Work | | | | | 1026155.41 |
| | | Add L.W.C. @ | 1% | | 10261.55 |
| Total payable Amount Including L.W.C. | | | | | 1036416.96 |
| | | Add Contengency @3% | | | 30784.66 |
| Total payable Amount Including L.W.C. and contengency | | | | | 1067201.62 |
| Say Rs. | | | | | 1067202.00 |
| In Word (Say) : Rupees Ten Lakh Seventy Two Thousand Four hundred Eight only | | | | | |

(Rupees Ten Lakh Sixty Seven Thousand Two Hundred & two only)

**Sub Assistant Engineer
Tarakeswar Municipality**

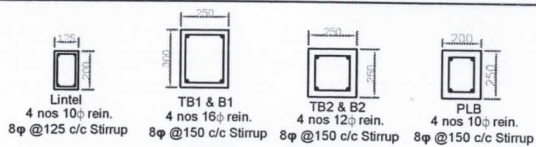
**Junior Engineer (Civil)
Hooghly Division
M.E. Directorate, Dept. of U.D. & M.A.
Govt. of West Bengal**

**Assistant Engineer
Hooghly Division, M.E. Dte
Dept. of U.D. & M.A.
Govt. of West Bengal**

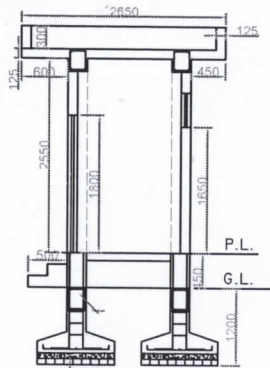
**Executive Engineer
Hooghly Division
M.E. Directorate, Dept. of U.D & M.A.
Govt. of West Bengal**

**Assistant Engineer
Hooghly Division, M.E. Dte
Dept. of U.D. & M.A.
Govt. of West Bengal**

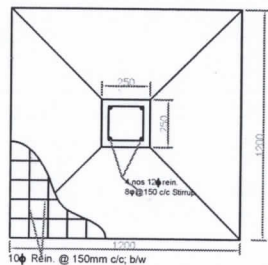
**CHAIRMAN
TARAKESWAR MUNICIPALITY**



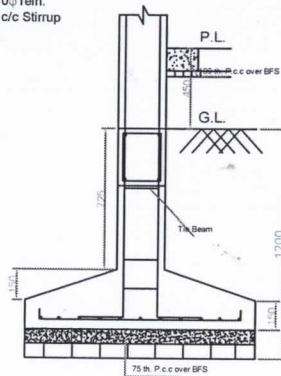
Typical Beam Details



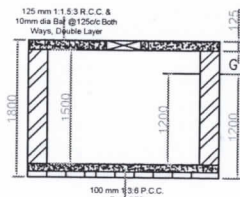
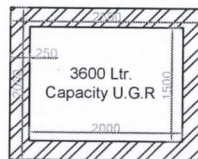
DETAILS OF WALL SECTION A-A



DETAILS OF FOUNDATION (SCALE 1:25)



Under Ground Reservoir Details



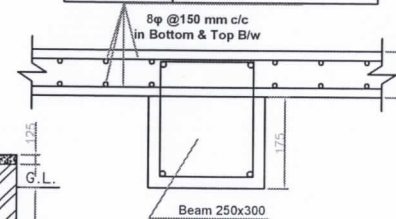
Area Statement

Builtup Area - 12.92 Sq.m.
Roof Area - 23.78 Sq.m.

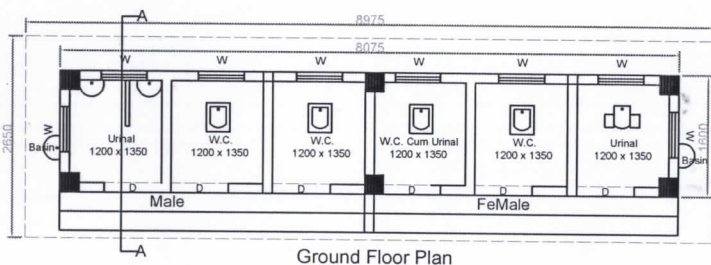
| MKD. | Size | Reinforcement | | | | Stirrup |
|------------|---------|---------------|-------------|-------------|-------------|-------------------|
| | | Support | | Span | | |
| | | Top | Bottom | Top | Bottom | |
| TB1&B1 | 250x300 | 3#16 ϕ | 2#16 ϕ | 2#16 ϕ | 3#16 ϕ | 8 ϕ @ 150c/c |
| TB2&B2 | 200x250 | 3#12 ϕ | 2#12 ϕ | 2#12 ϕ | 3#12 ϕ | |
| All Column | 250x250 | 4#12 ϕ | | | | 8 ϕ @ 150c/c |

Door - Window Shedule

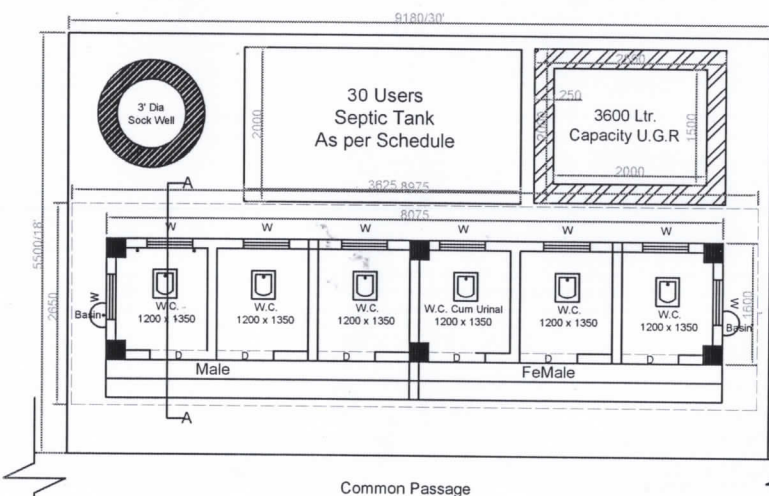
| MKD. | Size |
|------|----------|
| D | 750x1800 |
| W | 600x450 |



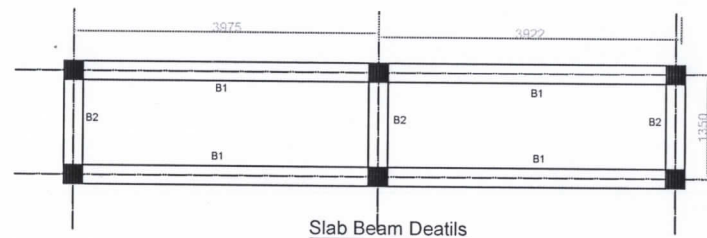
Slab Beam Details



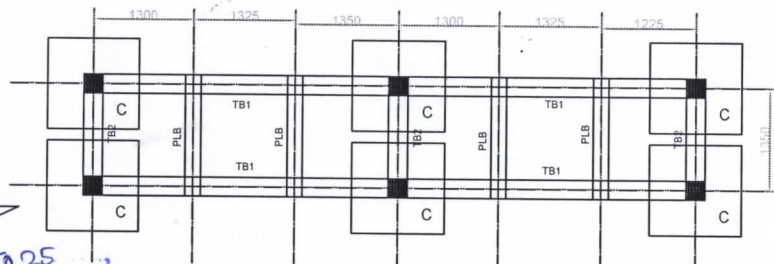
Ground Floor Plan



Sample Site Plan For CT Plan 4



Slab Beam Details



Foundation & tie Beam Details

BATTALA

GENERAL NOTES

1. ALL DIMENSIONS ARE IN MM.
2. OUTER WALL IS 125 MM.TH. WITH 1ST CLASS BRICKS IN CEMENT MORTER(6:1) AND PARTION WALL IS 125MM. TH. IN CEMENT MORTER(4:1)
3. GRADE OF CONCRETE M-20 ORDINARY CEMENT CONCRETE (MIX:1.5:3)
4. GRADE OF STEEL:FE-510
5. 25MM. TH D.P.C(MIX:1:2:4) WILL BE APPLIED
6. PLASTERING:
 OUTSIDE-15MM. TH. IN CEMENT MORTER(1:6)
 INSIDE-15MM. TH. IN CEMENT MORTER(1:6)
 CEILING-10MM. TH. CEMENT MORTER(1:4)
 BEARING CAPACITY OF SOIL AT DEPTH 1M BELOW G.L. = 110 KN/M2, WHICH MUCH BE EXPLODED BEFORE CONSTRUCTION. REDRAWING & REDESIGN IS NESSESARY IS BEARRING CAPACITY OF SOIL IS POOR THEN ASSUMED.

12.10.25
Sub Assistant Engineer
Tarakeswar Municipality

CHAIRMAN
TARAKESWAR MUNICIPALITY
Signature Of Authority