

25mm thick cement concrete (mix 1:1.5:3) with graded stone chips of nominal size 10mm in ground floor as per relevant IS codes.
 PWD Building Works schedule, page 16, item-16 (Rate Analysis)

Tie beam	4	1	0.8	1.2	0.2	1.14
part beam	4	1	0.4	0.4	0.2	0.64
Tie beam	3	1	2.33	0.25	0.25	0.19
part beam	2	1	1.2	0.25	0.25	0.44
part beam	1	1	4.35	0.25	0.25	0.08
part beam	1	1	1.2	0.25	0.25	0.54
Col(3-0.25-0.60=3.35)	1	1	1	0.25	0.25	0.08
Lintel	4	1	0.25	0.25	3.35	0.06
	2	1	2.33	0.25	0.2	0.84
Partition Wall	3	1	4.35	0.25	0.2	0.23
	1	1	1.6	0.13	0.2	0.65
	1	1	1	0.13	0.2	0.04
Chazza	1	1	1.2	0.13	0.2	0.03
Roof beam	3	1	0.5	0.45	0.1	0.03
	2	1	4.1	0.25	0.13	0.07
Roof Slab	3	1	2.33	0.25	0.13	0.27
	1	1	4.85	2.83	0.13	0.23
						1.78
						7.34

7.41	6048.74	sq m	44397.83
------	---------	------	----------

25mm thick damp proof course with cement concrete with stone chips (1:1.5:3) [with graded stone aggregate 10 mm nominal size] and admixture of water proofing compound as per manufacturer's specification followed by two coat of polymer based paint (1st coat after 4 to 5 days of concrete laying and 2nd coat just before brick masonry work) as directed (cost of water proofing compound & polymer based paint to be paid separately) (Chequering not required over concrete or painted surface) [Note: water proofing as per item 9, polymer based paint as per item 8(a) of sub head C of section (C) PWD building schedule page-47, item-1 (Rate analysis)] 2x 7.375x0.250=3.69m²
 3x3.250x0.250=2.44

Tie beam	2	1	4.35	0.25		2.18
Part Beam	3	1	2.33	0.25		1.75
Part Beam	1	1	1.6	0.13		0.21
Part Beam	1	1	1.2	0.13		0.16
	1	1	1	0.13		0.13
						4.42

4.42	203.00	sq m	897.26
------	--------	------	--------

125 mm brick work with 1st class bricks in cement mortar (1:4) in ground floor PWD Building Works schedule, Page -16, Item-16, con page -3, date -04/06/2018 (Rate Analysis)

Partition wall 3-125-2=2.68	1	1	1.6		2.68	4.29
	1	1	1.2		2.68	3.22
Parapet wall	1	1	1		2.68	2.68
	1	1	14.85		0.3	4.46
						14.64
Deduction						
Door	2	1	0.75		2.1	-3.15
						11.49

11.49	666.27	sq m	7655.44
-------	--------	------	---------

Supplying and laying polythene sheet (150 gm/sq m) over damp proof course or below flooring or roof terracing or foundation or foundation trenches PWD Building Works schedule, Page -47, Item-3

	1	1	4.85	2.83		13.73
--	---	---	------	------	--	-------

13.73	24.00	sq m	329.52
-------	-------	------	--------

Hire and labour charges for shuttering with centering and necessary staging upto 4 m using approved stout props and thick hard wood planks of approved thickness with required bracing for concrete slabs, beams and columns, lintels curved or straight including fitting, fixing and striking out after completion of works (upto roof of ground floor) (f) 25 mm to 30 mm shuttering without staging in foundation PWD Building Works schedule, Page -42, Item-36 f

Footing	4	4	1.2		0.3	5.76
Col	4	4	0.4		0.3	1.92
Col(G1 to P1)	4	4	0.25		0.6	2.4
Tie beam	2	2	4.35		0.25	4.35
Tie beam	3	2	2.33		0.25	3.5
Part Beam	1	2	1.6		0.25	0.8
Part Beam	1	2	1.2		0.25	0.6
Part Beam	1	2	1		0.25	0.5
						19.83

19.83	205.00	sq m	4065.15
-------	--------	------	---------

Hire and labour charges for shuttering with centering and necessary staging upto 4 m using approved stout props and thick hard wood planks of approved thickness with required bracing for concrete slabs, beams and columns, lintels curved or straight including fitting, fixing and striking out after completion of works (upto roof of ground floor) (A) (25mm to 30 mm thick wooden shuttering as per decision & direction of Engineer)

Column	4	4	0.25		2.75	11
Lintel	3	2	2.33		0.2	2.8
Lintel	2	2	4.35		0.2	3.48
Partition wall	1	2	1.2		0.2	0.48
	1	2	1.6		0.2	0.64
	1	2	1		0.2	0.4
Coornine						
Window	3	1	0.45		0.25	0.34
Door	2	1	1.05		0.25	0.53
	2	1	0.75		0.13	0.2
Chazza	3	1	0.5		0.45	0.68
	3	1	1.4		0.1	0.42
Roof beam	4	1	2.33		0.13	1.21
	2	1	1.6		0.13	0.42
	2	1	2.5		0.13	0.65
Outer side	1	1	15.35		0.25	3.84
Roof Slab	1	1	4.85		2.83	13.73
						40.79

40.79	328.00	sq m	13379.12
-------	--------	------	----------

stone in floor dado start case etc with cement mortar (1:2:4) with stone chips laid in panels as directed
 slabs made with ordinary or white cement as necessary and marble dust in proportion 1:2 in eluting
 in stone and rounding off corners including taking out joints and altering concrete surface and
 joints with cement slurry before flooring works using cement (70 kg/sq m) complete including all
 materials and labour. In ground floor 13 mm thick topping using grav. cement (1:2:5 mm)
 PWD Building Works schedule, p-48 Item 6(a)
 2X1 00X2 10=4 20m2

13.73	280.00	sq m	3844.40
-------	--------	------	---------

Roof
 Reinforcement for reinforced concrete work in all sorts of structures including distribution
 bars, stirrups, binders etc initial straightening and removal of loose rust (if necessary),
 cutting to requisite length, hooking and bending to correct shape, placing in proper position
 and binding with 16 gauge black annealed wire at every intersection, complete as per
 drawing and direction (a) For works in foundation and upto roof of ground floor upto 4 m

0.69	59241.18	M T	40983.05
------	----------	-----	----------

1.20% of item no 1.20% 7.34 7.85 0.6918
 Collapsible gate with 40 mm x 10 mm x 6 mm Tee as top and bottom guide rail 20 mm x 10 mm x 2 mm
 vertical channels 100 mm apart in full stretched position 20m x 5 mm MS flats as collapsible bracings properly
 riveted and washed including 38 mm steel roller including locking arrangements fitted and fixed in position
 with lugs set in cement concrete including cutting necessary hives chasing etc in walls, floors etc and making
 good all damages
 PWD Building Works schedule, Page -106, Item- 18
 2X1 00X2 10=4 20m2

4.20	4351.00	sq m	18274.20
------	---------	------	----------

15
 Brick work with 1st class bricks in cement mortar (1:4)
 (a) Foundation and plinth ground floor
 PWD Building Works schedule, Page -15, Item-7 a (Rate Analysts)

Tie beam to plinth				3.19	4849.48	cu m	15469.84
	1	3	2.33	0.25	0.6	1.05	
	1	2	4.35	0.25	0.6	1.31	
	1	1	1.6	0.25	0.35	0.14	
Partition wall (600x250=350)							
	1	1	1.2	0.25	0.35	0.11	
	1	1	1	0.25	0.35	0.09	
	1	1	2.25	0.75	0.15	0.25	
Stair							
	1	1	2.25	0.5	0.15	0.17	
	1	1	2.25	0.25	0.15	0.08	
							3.19

8.70	5072.48	cu m	44130.58
------	---------	------	----------

16
 Brick work with 1st class bricks in cement mortar (1:4) (b) superstructure ground floor PWD Building Works
 schedule, Page -15, Item-7 b (Rate Analysts)

3 0-0 25-0 2-2 55				1	3	2.33	0.25	2.55	4.46
				1	2	4.35	0.25	2.55	5.55
									10
Reduction Window				3	1	0.45	0.25	0.6	-0.2
Door				2	1	1.05	0.25	2.1	-1.1
									-1.31
									8.7

44.46	21.00	sq m	933.66
-------	-------	------	--------

17
 PWD Building Works schedule, P-192, It-1

Col				4	4	0.25		3.35	13.4
Lintel				3	2	2.33		0.2	2.8
Lintel				2	2	4.35		0.2	3.48
Partition wall				1	2	1.6		0.2	0.64
Partition wall				1	2	1.2		0.2	0.48
				1	2	1		0.2	0.4
Below opening									
Window				3	1	0.45		0.25	0.34
Door				2	1	0.75		0.13	0.2
				2	1	1.05		0.25	0.53
Chazza				3	2	0.45		0.5	1.35
Side				3	1	1.4		0.1	0.42
Roof beam				2	1	4.85		0.25	2.43
				2	1	2.85		0.25	1.42
In side				2	2	4.35		0.13	2.26
In side				2	1	2.33		0.13	0.61
Slab				1	1	4.85		2.83	13.73
									44.46

44.46	21.00	sq m	933.66
-------	-------	------	--------

Plaster (to wall, floor, ceiling etc.) with sand and cement mortar including rounding off or chamfering corners as directed and raking out joints including throating, nosing and drip course, scaffolding/staging where necessary (Ground floor) [Excluding cost of chipping over concrete surface] (i) With 1:6 cement mortar

84.81	138.46	sq m	11742.79
-------	--------	------	----------

PWD Building Works schedule, P-189 It- No. 1 (Rate Analysis)

	1	2	4.85	3.9	37.83
Chazza	1	2	2.83	3.9	22.07
	3	1	0.45	0.5	0.68
In side	3	1	1.4	0.1	0.42
	4	1	2.33	0.78	7.27
3.0-0.125-2.1=0.78	2	1	1.6	0.78	2.5
Partition wall	2	1	2.5	0.78	3.9
	1	2	1.6	0.78	2.5
	1	2	1.2	0.78	1.87
Parapet wall	1	2	1	0.78	1.56
	1	2	4.71	0.13	1.23
In side	1	2	2.7	0.13	0.7
	1	2	4.35	0.3	2.61
	1	2	2.33	0.3	1.4
Reduction					86.53
	3	1	0.45	0.6	0.81
	2	1	1.05	2.1	4.41
1/3 of the opening			0.33	5.22	1.72
					84.81

19 Plaster (to wall, floor, ceiling etc.) with sand and cement mortar including rounding off or chamfering corners as directed and raking out joints including throating, nosing and drip course, scaffolding/staging where necessary (Ground floor) [Excluding cost of chipping over concrete surface] (ii) With 1:4 cement mortar (c) 10 mm thick plaster
PWD Building Works schedule P-189 It- No. 1 ii (c) (Rate Analysis)

10.23	123.46	sq.m	1263.00
-------	--------	------	---------

Chazza	3	1	0.45	0.5	0.68
Slab	1	1	4.1	2.33	9.55
					10.23

20 Neat cement pointing about 15 mm thick in wall, dado, window sills, floors etc. Note cement 0.152 m³/100 m²
PWD Building Works schedule, P-192 It- No. 15

9.21	32.71	sq m	301.26
------	-------	------	--------

	1	1	15.35	0.6	9.21
--	---	---	-------	-----	------

21 Supplying, fitting and fixing fibre reinforced polymer (FRP) Composite door frame as per approved section with glass fibre reinforced plastic moulded skins and a special sandwich core, so as to impart monolithic composite structure as per approved technology of Department of Science and Technology (DST) to satisfy IS 4020 door testing performance criteria. (i) 66mm x 90mm
PWD Building Works schedule, P-115, It- 3 (i)

9.90	497.00	mtr	4920.30
------	--------	-----	---------

22 Supplying, fitting & fixing fibre reinforced polymer (FRP) Composite door shutters as per approved design with glass fibre reinforced plastic moulded skins and a special sandwich core, so as to impart monolithic composite structure as per approved technology of Department of Science and Technology (DST) to satisfy IS 4020 door testing performance criteria. In ground floor
ii) 25 mm thick P-125 It- 14(ii) 5x2.10x0.75=7.875m²

2.52	2581.00	sq m	6504.12
------	---------	------	---------

	2	1	0.62	2.03	2.52
--	---	---	------	------	------

23 Anodised aluminium barrel / tower / socket bolt (full covered) of approved manufactured from extruded section conforming to IS 204/74 fitted and fixed with cadmium plated screws. (vii) 225mm long x 10mm dia. bolt.
PWD Building Works schedule, P-144, It No. 26 (vii)

2.00	84.00	each	168.00
------	-------	------	--------

24 Iron butt hinges of approved quality fitted and fixed with steel screws, with ISI mark (viii) 100mm X 75mm X 3.50mm PWD Building Works schedule, P-140, It No. -5 (viii)

6.00	66.00	each	396.00
------	-------	------	--------

25 Anodised aluminium decorative handle (hexagonal / fluted) of approved quality fitted and fixed complete.
(i) 150mm plate x 10mm dia rod x 12mm hexagonal/fluted
PWD Building Works schedule, Page -146, Item no-31, (i)

4.00	87.00	each	348.00
------	-------	------	--------

26 Iron hasp bolt of approved quality fitted and fixed complete (oxidised) with 16mm dia rod with concrete bolt and round fitting
h) 250mm long
PWD Building Works schedule, Page -141, Item no-10 (h)

2.00	159.00	each	318.00
------	--------	------	--------

27 Supplying and laying chequered tiles of any shade and of approved quality with (1:1.5:3) cement concrete laid in panels or patterns as directed in pavement, footpath etc including necessary underlay 25 mm thick (avg cement mortar 1:3) complete in all respect with all labour and materials (Using cement slurry @ 4 kg/sq m at back side and @ 2.4 kg/sq m for joint filling)
PWD Building Works schedule, Page -74, Item no- 46 (i), 25 mm thick

3.49	877.00	sq m	3060.73
------	--------	------	---------

Slab	4	1	2.25	0.15	1.35
	3	1	2.25	0.25	1.69
	1	2	0.25	0.15	0.08
	1	2	0.5	0.15	0.15
	1	2	0.75	0.15	0.23
					3.49

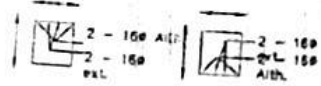
Supplying hubble free float glass of approved make and brand conforming to IS 2815:1957 (x) 5mm thick coloured tinted smoke glass PWD Building Works schedule P.

	3	1	0.45	0.6	0.81	0.81	585.00	sq.m	473.85
45	Painting block letters or digits in Black Japan e) Size above 7.5 cm and upto 10 cm PWD Building Works schedule, P-268, It-1					450.00	12.00	each	5400.00
46	Supplying and planting of different plants (supplying well grown plants bushy and healthy, i.e. fertilizer etc i) Furcaria Variegated 10 to 12 leaves in height 20-30 cm in earthen pot of size 25cm x) Ficus binnii (F. virens) well branched pot of size 30cm PWD Building Works schedule, Page -261 Bushy) of height 120cm - 135 cm in earthen . It-9 (x)					7.00	162.00	each	1134.00
47	xxv) Aroca Palm 4 - 5 suckers of height 90 PWD Building Works schedule, Page -261, cm to 105 cm in earthen pots of size 25 cm It-9 (xxvi)					3.00	187.00	each	561.00
48	SANITARY AND PLUMBING WORKS								
49	Supplying, fitting and fixing approved make complete in position with necessary bolts, nuts etc. a) With 'P' trap (with vent) PWDS&P Schedule, page-79, item no -3 (a)					2.00	3104.00	each	6208.00
50	Supplying, fitting and fixing Closet seat of approved make with lid and C.P. hinges, rubber buffer and brass screws complete (b) Anglo Indian (i) Plastic (hallow type) White PWD S&P Schedule, page-81, item no 10 b i					2.00	380.00	each	760.00
51	Supplying, fitting and fixing Flat back urinal (half stall urinal) in white vitreous chinaware of approved make in position with brass screws on 75 mm X 75 mm X 75 mm wooden blocks complete (ii) 470 mm X 280 mm X 340 mm PWD S&P Schedule, page 80, item no-6 (ii)					2.00	945.00	each	1890.00
52	Supplying fitting and fixing squatting plate with integrated flushing in white vitreous set in cement concrete (63:1) with ghama chips complete (Payment of concrete will be paid seperately) (1) 450 mm x 350 mm					2.00	881.00	each	1762.00
53	Supplying, fitting and fixing 10 litre P.V.C. low-down cistern conforming to I.S. specification with P.V.C. fittings complete, C.I. brackets including two coats of painting to bracket etc PWD S&P Schedule, Page No -36 Item No -2.					2.00	1015.00	each	2030.00
54	Supplying, fitting and fixing 32 mm dia. Flush Pipe of approved make with necessary fixing materials and clamps complete i) Polythene Flush Pipe PWD S&P Schedule, Page no 81 Item no. 11(i)					2.00	155.00	each	310.00
55	Supplying fitting and fixing urinal flush pipe fittings of approved brand (a) C.P. urinal flush pipe fittings range of one PWD S&P Schedule, S.P.81, item-12/a					2.00	414.00	each	828.00
56	Supplying fitting and fixing white vitreous china best quality approved make wash basin i) With C.I. brackets on 75 mm X 75 mm wooden blocks, C.P. waste fittings of 32 mm dia., ending good all damages and painting the brackets with two coats of approved paint 56 (ii) 550 mm X 400 mm size PWD S&P Schedule, P-41, It 2 (ii)					2.00	2208.00	each	4416.00
57	Supplying fitting and fixing pedestal of approved make for wash basin (White) PWD S&P Schedule, P-41, It 3					2.00	1497.00	each	2994.00
58	Supplying, fitting and fixing approved brand P.V.C. CONNECTOR white flexible, with both ends coupling with heavy brass C.P. nut, 15 mm dia., (iii) 600 mm long PWD S&P Schedule, Page No -43 Item No -9-iii					5.00	107.00	each	535.00
59	Supplying fitting and fixing approved brand 32 mm dia P.V.C. waste pipe, with PVC coupling at one end fitted with necessary clamps (iv) 1050 mm long each PWD S&P Schedule, Page No -43 Item No 10-iv					4.00	91.00	each	364.00
60	(f) Hand Shower (Health Faucet) with Imtr Flexible Tube with Wall Hook (Equivalent to Code No 573 & Model -ALLIED of Jaquar or similar) PWD S&P Schedule, Page No -3 Item No - 3 f.					2.00	1251.00	each	2502.00
61	(a) (i) Chromium plated Bib Cock short body (Equivalent to Code No 511 & Model - Tropical/ Sumthing Special of ESSCO or similar brand) PWD S&P Schedule, Page No -6 Item No -7-a-i					3.00	539.00	each	1617.00

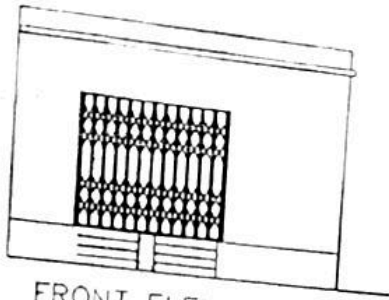
	Chromium plated Stop Cock (Equivalent to Code No 513(A) & 513(8) & Model- Tropical something Special of ESSCO or similar PWD S&P Schedule, Page No -6 Item No -7-b-1)	1 00	493 00	each	493 00
63	Chromium plated angular Stop Cock with wall flange (Equivalent to Code No 5053 & Model - Florentine of Jaquar or similar brand) PWD S&P Schedule, Page No -6 Item No -7-d-1.	5 00	815 00	each	4075 00
64	Supplying, fitting and fixing pillar cock of approved make a) (i) CP Pillar Cock - 15 mm (Equivalent to Code No 507 & Model - Tropical / Something Special of ESSCO or similar brand) (P No - 45, Item No - 19(a)), Pwd Sanitary Plumbing Schedule 2017)	2 00	555 00	each	1110 00
65	Supplying, fitting and fixing PVC pipes of approved make of Schedule 80 (medium duty) conforming to ASTM D - 1785 and threaded to match with GI Pipes as per IS - 1239 (Part - I) with all necessary accessories, specials viz socket, bend, tee, union, cross, elbo, nipple, long screw, reducing socket, reducing tee, short piece etc fitted with holder bats clamps, including cutting pipes, making threads fitting, fixing etc complete in all respect including cost of all necessary fittings as required jointing materials and two coats of painting with approved paint in any position above ground (Payment will be made on the centre line measurements of total pipe line including all specials. No separate payment will be made for accessories, specials. Payment for painting will be made seperately) (a) For Exposed Work PVC Pipes, 25mm Page No -12 Item No -19-(a), PWD, VOL-11, 2017-18	15 00	177 00	mtr.	2655 00
66	(a) (a) For Exposed Work PVC Pipes, 15 mm Page No -12 Item No -19-(a), PWD, VOL-11, 2017-18	10 00	101 00	mtr.	1010 00
67	(b) For Concealed Work PVC Pipes, 15 mm Page No -12 Item No -19-(b), PWD, VOL-11, 2017-18	10 00	137 00	mtr.	1370 00
68	Supplying and fitting fixing of gunmetal wheel valve of approved brand and make tested to 21 Kg per sq cm. 25 mm dia(E5) PWD S&P Schedule, P-5 It-5, vii),	2 00	778 00	each	1556 00
69	Supplying P V C water storage tank of approved quality with closed top with lid (Black) - Multilayer (b) 1000 litre capacity PWDS&P Schedule, page 37, item no-6 (b)	2 00	5128 00	each	10256 00
70	Labour for hoisting plastic water storage tank (i), Upto 1500 litre capacity. (a) Upto 1st st01y from G L. PWDS&P Schedule, page 37, item no-10 (i)(a)	2 00	96 00	each	192 00
71	Labour for punching hole in plastic water storage tank upto 50 mm dia. PWD S&P Schedule, (P. No - 38, Item No - 13	6 00	19 00	each	114 00
72	Supply of UPVC pipes (B Type) & fittings conforming to IS-13592- 1992 (A) m Single	30 00	292 00	mtr.	8760 00
73	(i) Coupler, (b) 110 mm	8 00	85 00	each	680 00
74	(ii) Plain Tee, (b) 110 mm	12 00	85 00	each	1020 00
75	(iii) Door Tee, (b) 110 mm	10 00	195 00	each	1950 00
76	(iv) Bend 45(b) 110 mm	10 00	89 00	each	890 00
77	(v) Door Bend (T S), (b) 110 mm	7 00	147 00	each	1029 00
78	(vi) Pipe Clip, (b) 110 mm	20 00	21 00	each	420 00
79	(vii) W C Connector (150 mm lonal 125 X 110(w/WC Ring) 75 mm	4 00	142 00	each	568 00
80	(viii) Plain Floor Tran with Too tile & Strainer 75 mm	7 00	144 00	each	1008 00
81	(ix) Rubber Ring, (b) 110 mm	15 00	17 00	each	255 00
82	(x) Rubber Lubricant 500 ML	1 00	187 00	500ml	187 00
83	(xi) Solvent Cement 250 ML	1 00	103 00	250ml	103 00

	Supplying, fitting and fixing 1. PVC pipes for above ground work including cost of materials etc. fitting and fixing all necessary specials cutting pipes with the holes in masonry including specials (B) Under ground (ii) 100 mm dia P.W.D S&P Schedule, P-74, Item No-24(B)	25.00	84.00	mtr	2100.00
85	Supplying, fitting & fixing UPVC pipes A- Type and fittings conforming to IS 13592-1992 with all necessary clamps nails, including making holes in walls, floor etc cutting trenches in any soil through masonry concrete structures etc if necessary and mending good damages including joining with jointing materials (Spun Yarn, Valamoid/Bitumen/M-Seal etc) complete A) UPVC Pipes (i) 75 mm Dia (P - 212, Item No - 21 (A)(i), (B),(c),(f) & (BJ, (d),(f), Pwd volume- i, 2017)	30.00	188.00	mtr	5640.00
86	86 B) UPVC Fittings c) Bend 87.5 degree (i) 75 mm Dia	6.00	95.00	mtr.	570.00
87	87 B UPVC Fittin's dl Shoe fil 75 mm Dia	2.00	78.00	mtr	156.00
88	Constructing Inspection pit of inside measurement 600mm X 600mm X upto 600mm (depth) with 250 mm thick 1st class brick work in cement mortar (1:4) on all sides, bottom of the pit consisting of 100 mm thick cement concrete (1:3:6) with stone chips over a layer of hama brick flat soiling, 15 mm thick (1:4) cement plaster to inside walls and out-side walls upto G.L. and 20 mm thick (1:4) plaster to bottom of the pit, providing necessary invert with cement concrete (1:3:6) with stone chips as per direction, neat cement finishing to entire internal surfaces, top of the pit covered with 100 mm thick R.C.C. slab (1:1.5:3) with stone chips and necessary reinforcements upto 1% and 88 shuttering including 6 mm thick cement plaster (1:4) in all external surfaces of the slab and one 560 mm dia R.C.C. manhole cover of approved make supplied, fitted and fixed in the slab with necessary fittings, necessary earthwork in excavation in all sorts of soil, filling sides of the pit with earth and removing spoils after work complete in all respect with all costs of labour and materials (i) With Pakur variety (Other than SAIL/TATA/RINL) P.W.D S&P Schedule, S.P 87, Item No-1(i), 7th Corrigena Volume ii	3.00	6471.00	each	19413.00
89	Construction of septic tank of different capacities as per approved drawing with 1st class brick work in cement mortar (1:4) including two 560 mm dia R.C.C. manhole cover (heavy type) of approved make supplied, fitted and fixed in the 100mm thick R.C.C. (1:1.5:3) top slab with necessary fittings, 20mm thick cement plaster (1:4) with neat cement finish to the internal surfaces and 15 mm thick cement plaster (1:4) to outside all upto 200 mm below G.L. floor finished with 25 mm thick grey artificial stone over 100 mm thick R.C.C. (1:1.5:3) bottom slab including supplying, fitting and fixing all necessary specials, fittings, S.W. tees, C.I. foot rest etc including excavation earth in all sorts of soil, shoring, bailing out and pumping out water as necessary, ramming, 89 dressing the bed and refilling the sides of the tanks with earth, removing spoils, filling up the chamber with clear water, removing foreign materials from the chamber and including constructing attached inspection pit as per approved drawing and connecting all necessary pipes, joints etc. with internal plaster work and artificial stone flooring is to be done with admixture of water proofing compound @ 0.5% by weight of cement with all costs of labour and materials (ii) For 20 users (i) With Pakur variety QSW/JSPL/SHYAM/SRMB/ELECTROSTEEL/SSL) P.W.D S&P Schedule, S.P.88, Item No-3(ii)(A) 7th Corrigena Volume ii	1.00	82612.00	each	82612.00
90	Construction of circular soak well 2.5 metre deep in all types of sandy soils with dry brick work upto 1.6 metre from the bottom having 150 mm intermediate cement brick work (1:4) band all round and cement brick work (1:4) upto 0.90 metre from top with 20mm thick cement plastering (1:4) to inside face upto the depth of cement brick work, 5mm thick cement plaster (1:4) on outer face from top of the well upto G.L. and 6 mm 1 thick cement plaster (1:4) on top of the R.C.C. cover slab including filling bottom 1.00 metre of inside of the well with brick metal (50 mm to 63 mm size) including R.C.C. cover slab of 100 mm thick with cement cone (1:1.5:3) with stone chips with necessary reinforcement and shuttering including one 560 mm dia R.C.C. manhole cover (heavy type) of approved make supplied, fitted and fixed in the cover slab with necessary fittings, making necessary arrangements for pipe connections, excavation of well including shoring dewatering and removing the excess earth from the premises as per direction complete in all respect with all costs of labour and materials. With 250 mm thick dry brick work and 250 mm thick cement brick work (1:6) and 1.00m inside dia. (Other than SAIL/TATA/RINL) S.P.89, Item No-4 7th Corrigena Volume ii	1.00	15599.00	each	15599.00
91	Supplying, fitting and fixing tower fan with two brackets (a) C.P. over brass (ii) 25 mm dia and 600 mm long No- 22 (a)(ii) P.W.D S&P Schedule, p No 82	2.00	430.00	each	860.00
92	Supplying, fitting and fixing bevelled edged mirror 5.5 mm thick silver red as per LS 3438 / 1965 together with brass C.P. hinges (ii) 600 mm X 450 mm P.W.D S&P Schedule, P-81, Jt-15(ii)	2.00	484.00	each	968.00
93	Supplying, fitting and fixing soap holder (b) Fibre glass Sanitary and plumbing work schedule P-82, Jt-18(b)	2.00	58.00	each	116.00

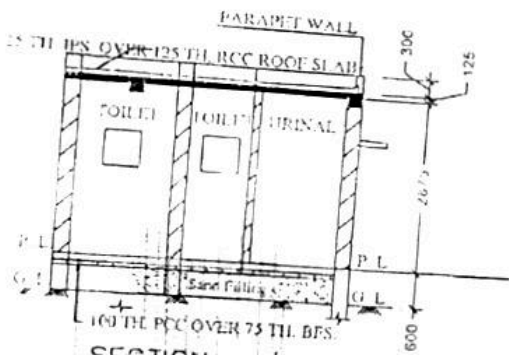
MODEL DRAWING FOR CONSTRUCTION OF C. T./P.T.
TOILET SEATS 2 NOS URINAL 3 NOS
MODEL NO.- F



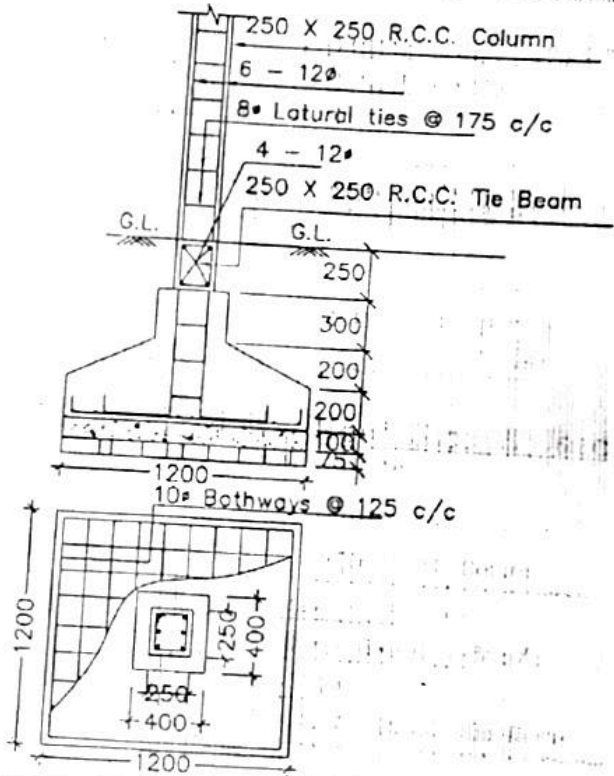
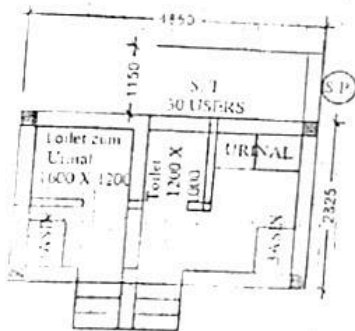
Details Of R.C.C Roof Slab & Beam
(SCALE - 1 : 25)



FRONT ELEVATION



SECTION - 'A - A'



DETAILS OF R. C. C COLUMN
(SCALE - 1 : 25)

[Signature]
21/05/25
Sub Assistant Engineer,
Dinhata Municipality

[Signature]
22/05/25
Chairman
Dinhata Municipality

Checked & Verified

[Signature]
Engineer (Civil)
Hiji INSPIRATION

23/06/25
Junior Engineer
Coch Behar Division M.E. Div.
Govt. of West Bengal



23/06/25
Assistant Engineer
Coch Behar Division M.E. Div.
Govt. of West Bengal