



6	Ordinary Cement concrete (mix 1:1.5:3) with graded stone chips (20 mm nominal size) excluding shuttering and reinforcement if any in ground floor as per relevant IS codes a) Pakur Variety Chandil Variety PWD Building Works schedule, p-26 Item 10 a (Rate Analysis)	7.34	6048.75	Cum	44397.83				
	Footings 0.5x(1.2x1.2)+(4x4)=0.8	4	1	1.2	1.2	0.2	1.15		
	Tie Beam	4	1	0.8		0.2	0.64		
	part beam	3	1	0.4	0.4	0.3	0.19		
	Tie Beam	1	1	2.33	0.25	0.25	0.44		
	part beam	2	1	1.2	0.25	0.25	0.08		
	part beam	1	1	4.35	0.25	0.25	0.54		
	Col(3-0.25-0.6-3.35)	1	1	1.2	0.25	0.25	0.08		
	Lintel	4	1		0.25	0.25	0.06		
		2	1	2.33	0.25	0.2	0.84		
	Partition Wall	3	1	4.35	0.25	0.2	0.23		
		1	1	1.6	0.13	0.2	0.65		
		1	1	1	0.13	0.2	0.04		
	Chazza	1	1	1.2	0.13	0.2	0.03		
	Roof beam	3	1	0.5	0.45	0.1	0.03		
		2	1	4.1	0.25	0.13	0.07		
	Roof Slab	3	1	2.33	0.25	0.13	0.27		
		1	1	4.85	2.81	0.13	0.23		
							1.78		
							7.34		
7	25mm thick damp proof course with cement concrete with stone chips (1:1.5:3) [with graded stone aggregate 10 mm nominal size] and admixture of water proofing compound as per manufacturer's specification followed by two coat of polymer based paint, (1st coat after 4 to 5 days of concrete laying and 2nd coat just before brick masonry work) as directed (cost of water proofing compound & polymer based paint to be paid separately) (Chequering not required over concrete or painted surface) [Note: water proofing as per item 9, polymer based paint as per item 8(a) of sub head C of section (C) PWD building schedule page-47, item-1 (Rate analysis) 2x 7.375x0.250=3.69m <sup>2</sup> 3x3.250x0.250=2.44	4.42	203.00	sq m	897.26				
	Tie beam	2	1	4.35	0.25		2.18		
	Part Beam	3	1	2.33	0.25		1.75		
	Part Beam	1	1	1.6	0.13		0.21		
		1	1	1.2	0.13		0.16		
		1	1	1	0.13		0.13		
							4.42		
8	125 mm brick work with 1st class bricks in cement mortar (1:4) in ground floor PWD Building Works schedule, Page -16, Item-16, cori page -3, date -04.06.2018 (Rate Analysis)	11.49	666.27	sq m	7655.44				
	Partition wall(3- 125- 2=2.68)	1	1	1.6		2.68	4.29		
		1	1	1.2		2.68	3.22		
	Parapet wall	1	1	1		2.68	2.68		
		1	1	14.85		0.3	4.46		
	Deduction						14.64		
	Door	2	1	0.75		2.1	-3.15		
							11.49		
9	Supplying and laying polythine sheet (150 gm/sq m) over damp proof course or below flooring or roof terracing or foundation or foundation trenches PWD Building Works schedule, Page -47, Item-3	13.73	24.00	sq m	329.52				
		1	1	4.85	2.83		13.73		
10	Hire and labour charges for shuttering with centering and necessary staging upto 4 m using approved stout props and thick hard wood planks of approved thickness with required bracing for concrete slabs, beams and columns, lintels curved or straight including fitting, fixing and striking out after completion of works (upto roof of ground floor) (f) 25 mm to 30 mm shuttering without staging in foundation PWD Building Works schedule: Page -42, Item- 36 f	19.83	205.00	sq m	4065.15				
	Footings	4	4	1.2		0.3	5.76		
	Col	4	4	0.4		0.3	1.92		
	Col(GL to PL)	4	4	0.25		0.6	2.4		
	Tie beam	2	2	4.35		0.25	4.35		
	Tie beam	3	2	2.33		0.25	3.5		
	Part Beam	1	2	1.6		0.25	0.8		
	Part Beam	1	2	1.2		0.25	0.6		
	Part Beam	1	2	1		0.25	0.5		
							19.83		
11	Hire and labour charges for shuttering with centering and necessary staging upto 4 m using approved stout props and thick hard wood planks of approved thickness with required bracing for concrete slabs, beams and columns, lintels curved or straight including fitting, fixing and striking out after completion of works (upto roof of ground floor) (A) (25mm to 30 mm thick wooden shuttering as per decision & direction of Engineer	40.79	328.00	sq m	13379.12				
	Column	4	4	0.25		2.75	11		
	Lintel	3	2	2.33		0.2	2.8		
	Lintel	2	2	4.35		0.2	3.48		
	Partition wall	1	2	1.2		0.2	0.48		
		1	2	1.6		0.2	0.64		
	Chocamine	1	2	1		0.2	0.4		
	Window	3	1	0.45		0.25	0.34		
	Door	2	1	1.05		0.25	0.53		
		2	1	0.75		0.13	0.2		



18	Plaster (to wall, floor, ceiling etc ) with sand and cement mortar including rounding off or chamfering corners as directed and raking out joints including throating, nosing and drip course, scaffolding staging where necessary (Ground floor) [Excluding cost of chipping over concrete surface] (i) With 1:6 cement mortar (c) 15 mm thick plaster PWD Building Works schedule, P-189 It- No. 1 (Rate Analysis)	84.81	138.46	sq m	11742.79	
	Outer side					
	1	2	4.85	3.9	37.83	
	Chazza	2	2.83	3.9	22.07	
	3	1	0.45	0.5	0.68	
	In side	3	1.4	0.1	0.42	
	4	1	2.33	0.78	7.27	
	3:0:0 1:2.5:2 1:(i) 78	2	1.6	0.78	2.5	
	Partition wall	2	2.5	0.78	3.9	
	1	2	1.6	0.78	2.5	
	1	2	1.2	0.78	1.87	
	Parapet wall	1	1	0.78	1.56	
	1	2	4.73	0.13	1.23	
	In side	1	2.7	0.13	0.7	
	1	2	4.35	0.3	7.61	
	1	2	2.33	0.3	1.4	
	Oeduction				86.53	
	3	1	0.45	0.6	0.81	
	2	1	1.05	2.1	4.41	
	1/3 of the opening				5.22	
			0.33	5.22	1.72	
					84.81	
19	Plaster (to wall, floor, ceiling etc ) with sand and cement mortar including rounding off or chamfering corners as directed and raking out joints including throating, nosing and drip course, scaffolding/staging where necessary (Ground floor) [Excluding cost of chipping over concrete surface] (ii) With 1:4 cement mortar (c) 10 mm thick plaster PWD Building Works schedule P-189 It- No. 1 ii(c) (Rate Analysis)	10.23	123.46	sq.m	1263.00	
	Chazza	3	1	0.45	0.5	0.68
	Slab	1	1	4.1	2.33	9.55
					10.23	
20	Neat cement punning about 15 mm thick in wall ,dado, window sills, floors etc Note ement 0 152 m3/100 m2 PWD Building Works schedule, P-192 It- No. 15	9.21	32.71	sq.m	301.26	
	1	1	15.35	0.6	9.21	
21	Supplying, fitting and fixing fire reinforced polymer (FRP) Composite door frame as per approved section with glass fibre reinforced plastic moulded skins and a special sandwich core, so as to impart monolithic composite structure as per approved technology of Department of Science and Technology (DST) to satisfy IS 4020 door testing performance criteria (i) 66mm x 90mm PWD Building Works schedule, P-115, It- 3 fi)	9.90	497.00	mtr.	4920.30	
	2	1	4.95		9.9	
22	Supplying, fitting & fixing fibre reinforced polymer (FRP) Composite door shutters as per approved design with glass fibre-reinforced plastic moulded skins and a special sandwich core, so as to impart monolithic composite structure as per approved technology of Department of Science and Technology (DST) to satisfy IS 4020 door testing performance criteria. In ground floor ii) 25 mm thick P-125. It- 14(ii) 5x2 10x0 75=7 875m2	2.52	2581.00	sq m	6504.12	
	2	1	0.62	2.03	2.52	
23	Anodised aluminium barrel /tower/ socket bolt (full covered) of approved manufactured from extruded section conforming to IS 204 74 fitted and fixed with cadmium plated screws. (vii) 225mm longx 10mm dia. bolt. PWD Building Works schedule, P-144, It No. 26 (vii)	2.00	84.00	each	168.00	
24	Iron butt hinges of approved quality fitted and fixed with steel screws, with ISI mark (viii) 100mm X 75mm X 3 50mm PWD Building Works schedule, P-140, It No. -5 (viii)	6.00	66.00	each	396.00	
25	Anodised aluminium decorative handle (hexagonal / fluted) of approved quality fitted and fixed complete (i) 150mm plate x 10mm dia rod x 12mm hexagonal fluted PWD Building Works schedule, Page -146 Item no-31,(i)	4.00	87.00	each	348.00	
26	Iron hasp bolt of approved quality fitted and fixed complete (oxidised) with 16mm dia rod with concrete bolt and round fitting b)250mm long PWD Building Works schedule, Page -141 Item no-10 b)	2.00	159.00	each	318.00	
27	Supplying and laying chequered tiles of any shade and of approved quality with (1:1:5:3) cement concrete laed in pannels or patterns as directed in pavement ,footpath etc including necessary underlay 25 mm thick (avg cement mortar (1:3) complete in all uespect with all labour and materials ( Using cement slurry @4.4kg sq m at back side nd @2.4 kg sq m for joint filling) PWD Building Works schedule, Page -74, Item no-46(i). 25 mm thick	3.49	877.00	sq m	3060.73	
	Star	4	1	2.25	0.15	1.35
		3	1	2.25	0.25	1.69
		1	2	0.25	0.15	0.08
		1	2	0.5	0.15	0.15
		1	2	0.75	0.15	0.23
						3.49

Water based WATER PROOF wall putty of approved							85.83	122.00	sq m	10471.20				
Same as item no 18 -19-20														
29	Applying interior grade Acrylic Primer of approved quality and brand on plastered and concrete surface old or new surface to receive Distemper Acrylic emulsion paint including scraping and preparing the surface thoroughly, complete as per manufacturer's specification and as per direction of the L-1-C (Ground Floor) (b) Two Coats <i>Water based interior grade acrylic primer</i> PWDBuilding Works schedule, Page -195, Item no-44+07						84.81	10.23	9.21	85.83	29.15	<del>81.00</del> 44.20	sq m	<del>2361.15</del> 1288.43
	In side	4	1	2.33	0.78	7.27								
		2	1	4.1	0.78	6.4								
	3 0-0 125-2 1=0 78	2	1	1.6	0.78	2.5								
		2	1	1.2	0.78	1.87								
	Slab	2	1	1	0.78	1.56								
		1	1	4.1	2.33	9.55								
30	Dry Destempering internal walls or ceiling including cleaning, washing, smoothening 30 surface (b) two coats FWD Building Works schedule, Page -196, Item no-9(b)										29.15	49.00	sq m	1428.35
31	Applying exterior grade Acrylic Primer of approved quality and brand on plastered or concrete surface old or new surface to receive Decorative Textured (Marti Finish) or Smooth Finish Acrylic exterior emulsion paint including scraping and preparing the surface thoroughly, complete as per manufacturer's specification and as per direction of the E/C in Ground Floor (b) two coats PWDBuilding Works schedule, Page -196, Item no-8(b) 79.69-18.00-36.00=136.69 m2										61.58	45.10	sq m	2777.26
	Outer side	1	2	4.85	3.6	34.92								
		1	2	2.83	3.6	20.38								
	Chazza	3	2	0.45	0.5	1.35								
		3	1	1.4	0.1	0.42								
	Parapet wall	1	2	4.73	0.13	1.23								
		1	2	2.7	0.13	0.7								
	In side	1	2	4.6	0.3	2.76								
		1	2	2.58	0.3	1.55								
						63.31								
	Deduction	3	1	0.45	0.6	0.81								
		2	1	1.05	2.1	4.41								
						5.22								
	1/3 of the opening			0.33	5.22	1.72								
						61.58								
32	Protective and Decorative Acrylic Exterior emulsion paint of approved quality, as per manufacturer's specification and as per direction of E/C to be applied over Acrylic primer 32 as required. The rate includes cost of materials, labour, scaffolding and all incidental charges but excluding the cost of primer in ground floor (two coats)(a) normal acrylic emulsion PWDBuilding Works schedule, Page -197, Item no-17(a)										61.58	67.00	sq.m	4125.86
33	(b) Priming one coat on timber or plastered surface with synthetic oil bound primer of approved quality including smoothening surfaces by sand papering etc. PWDBuilding Works schedule, Page -200 Item no-1 (b)										9.21	<del>29.00</del> 38.00	sq.m	<del>267.09</del> 349.98
34	(A) Painting with best quality synthetic enamel paint of approved make and brand including smoothening surface by sand papering etc, including using of approved putty etc on the surface, if necessary Page -200 Item no-1 (b) (a) On timber or plastered surface With super gloss (hi-gloss) - (iv) Two coats (with any shade except white) PWDBuilding Works schedule, Page -200 Item no-2(A)(a)(iv)										9.21	<del>79.00</del> 81.00	sq m	<del>727.59</del> 746.01
35	(a) MS or W1 Ornamental grill of approved design joints continuously welded with MS, W1 Flats and bars of windows, railing etc fitted and fixed with necessary screws and lugs in ground floor (i) Grill weighing above 10 Kg /sq mtr and up to 16 Kg /sq mtr PWDBuilding Works schedule, P-104 Item-13 A (i) (3rd Corrigendam Page No 91)										0.48	10021.00	qntl.	4810.08
	Pump House	6	1	0.6	0.6	2.16								
	Window	3	1	0.45	0.6	0.81								
						2.97								
				2.97	16	47.52								
36	a) Priming one coat on steel or other metal surface with synthetic oil bound primer of [approved quality including smoothening surfaces by sand papering etc PWDBuilding Works schedule, P/200 Item-1(a)										7.17	29.00	sq m	207.93
	Quantity from item 11035					2.97								
	Quantity from item no 14		0	15		4.2								
						7.17								

37	<p>Painting with best quality synthetic enamel paint of approved make and brand including smoothening surface by sand papering etc including using of approved putty etc on the surface, if necessary</p> <p>(b) On steel or other metal surface</p> <p>(iv) Two coats (with any shade except white)</p> <p>PWD Building Works schedule, P-200 Item-2(b)(iv)</p>	7.17	79.00	sq m	566.43					
38	<p>Supplying and laying true to line and level vitrified tiles of approved brand (size not less than 600 mm X 600 mm X 10 mm thick) in floor, skirting etc set in 20 mm sand cement mortar (1.4) and 2 mm thick cement slurry back side of tiles using cement @ 2.91 Kg /sqM or using polymerised adhesive (6 mm thick layer applied directly over finished artificial stone floor/Mosaic etc without any backing course) laid after application slurry using 1.75 Kg of cement per sqM below mortar only. joints grouted with admixture of white cement and colouring Pigment to match with colour of tiles/ epoxy grout materials of approved make as directed and removal of wax coating of top surface of tiles with warm water and polishing the tiles using soft and dry cloth upto mirror finish complete including the cost of materials, labour and all other incidental charges complete true to the manufacturer's specification and direction of Engineer-in- Charge (White cement, synthetic adhesive and grout material to be supplied by the contractor)</p> <p>1.1(1) With application slurry @ 1.75 kg/ Sq m, 20 mm sand cement mortar (1.4) &amp; 2 mm thick cement slurry at back side of tiles, 0.2 kg/ Sq m white cement for joint filling with pigment</p> <p>(A) Deep Colour &amp; White</p> <p>PWD Building Works schedule, Page-66 Item-36 (A) ( 3rd</p>	19.11	1688.00	sq m	32257.68					
	Floor	2	1	4.1	2.33	19.11				
						19.11				
39	<p>Supplying, fitting &amp; fixing 1st quality Ceramic tiles in walls and floors to match with the existing work &amp; 4 nos. of key stones (10mm) fixed with araldite at the back of each tile &amp; finishing the joints with white cement mixed with colouring oxide if required to match the colour of tiles including roughening of concrete surface, if necessary or by synthetic adhesive &amp; grout materials etc.</p> <p>B) Wall</p> <p>Area of each tile above 0.09 Sq.m</p> <p>ii) Other than Coloured decorative including white</p> <p>PWD Building Works schedule, page-64, Item:35 (8.) (b) (ii) ( 3rd Corrigendum ,Page361</p>	48.95	1036.00	sq.m	50712.20					
	In side	4	1	2.33	2.1	19.57				
		2	1	4.1	2.1	17.22				
		2	1	1.6	2.1	6.72				
		2	1	1.2	2.1	5.04				
		2	1	1	2.1	4.2				
						52.75				
	Deduction(Window)	3	1	0.45	0.6	0.81				
	Door	2	1	1.05	2.1	4.41				
	JDoor	2	2	0.75	2.1	6.3				
						11.52				
	1/3 of the opening			0.33	11.52	3.8				
						48.95				
40	<p>Supplying profiles of required section made of Aluminium Alloy Extrusions conforming to IS 732-1983 and IS 1285- 1975. Anodized (with required film thickness and ecified colour' natural) matt finished conforming to IS 1868-1983 for fabrication of com posit door, sliding &amp; casement windows, partitions, formed of basic sections of any IS' embossed' certified make and brand as per direction of Engineer - In- Charge (Payment will be made on finished length of the work)</p> <p>(A) In 10-12 Micron thickness Anodizing film</p> <p>D Natural white h) Louvered window i) Top, bottom and side member</p> <p>PWD Building Works schedule, PWD, P-233, I- IIh) i</p>	6.30	183.00	M	1152.90					
		3	1	2.1		6.3				
41	ii) Louvered Section									
		3	2	0.6		3.6	3.60	658.00	M	2368.80
42	iii) Cleat angle / Non-anodized)									
		3	4	0.4		4.8	4.80	263.00	M	1262.40

43	Labour charge for fabrication and installation of composite door window partitions made from anodized extruded alloy aluminium sections for the following units - (A) Glazed aluminium sliding windows made of extruded and anodized alloy aluminium sections fabrications, including cutting to proper shape and size, drilling and aligning of window shutter frame fitted with in built locking arrangements, sliding rollers and other necessary fittings, fixture, adhesives and joineries along with extruded neoprene or EPDM gasketing in between window frame and masonry work (walls, column, beam lintels etc) as well as between glass and shutter frame for fitting glass and Polysulphide sealant and in between shutter and window frame where necessary. The rate includes the hire charge of all tools and plants, including all incidental charges, adhesive, neoprene/ EPDM gasket, locking arrangement and rollers v) Louvered window P.W.D Building Works schedule, P-243, I-9	0.81	730.00	sq m	591.30
44	3 1 0.45 0.6 0.81 Supplying bubble free float glass of approved make and brand conforming to IS-2835-1987 (ix) 3mm thick coloured/ tinted/ smoke glass P.W.D Building Works schedule, P-43, I-9	0.81	585.00	sq m	473.85
45	3 1 0.45 0.6 0.81 Painting block letters or digits in Black Japan e) Size above 7.5 cm. and upto 10 cm P.W.D Building Works schedule, P-268, It-1	450.00	12.00	each	5400.00
46	Supplying and planting of different plants/ (supplying well grown plants bushy and healthy, i.e. exposed height including all leads and lifts, carriage, handling, manuring applying pesticide and fertilizer etc i) Furcraea Variegated 10 to 12 leaves in height 20-30 cm in earthen pot of size 25cm	7.00	162.00	each	1134.00
47	x) Ficus baxii (F. vivipara) well branched (pot of size 30cm) P.W.D Building Works schedule, Page -261 Bushy) of height 120cm - 135 cm in earthen pot, It-9 (x)	3.00	187.00	each	561.00
48	xxvi) Areca Palm 4 - 5 suckers of height 90 P.W.D Building Works schedule, Page -261, cm to 105 cm in earthen pots of size 25 cm It-9 (xxvi)	3.00	127.00	each	381.00
SANITARY AND PLUMBING WORKS					
49	Supplying, fitting and fixing Anglo Indian type C.P. in white vitreous china ware of approved make complete in position with necessary bolts, nuts etc. a) With 'P' trap (with vent) P.W.D S&P Schedule, page-79, item no -3 (a)	2.00	3104.00	each	6208.00
50	Supplying, fitting and fixing Closet seat of approved make with lid and C.P. hinges, rubber buffer and brass screws complete. (b) Anglo Indian (i) Plastic (hallow type) White P.W.D S&P Schedule, page-81, item no 10.b.i	2.00	380.00	each	760.00
51	Supplying, fitting and fixing Flat back urinal (half stall urinal) in white vitreous chinaware of approved make in position with brass screws on 75 mm X 75 mm X 75 mm wooden blocks complete (ii) 470 mm X 280 mm X 340 mm P.W.D S&P Schedule, page 80, item no-6/(ii)	2.00	945.00	each	1890.00
52	Supplying fitting and fixing squatting plate with integrated flushing in white vitreous set in cement concrete (6 3 1) with jhama chips complete ( Payment of concrete will be paid separately) (I) 450 mm x 350 mm	2.00	881.00	each	1762.00
53	Supplying, fitting and fixing 10 litre P.V.C. low-down cistern conforming to I.S. specification with P.V.C fittings complete. C.I. brackets including two coats of painting to bracket etc. P.W.D S&P Schedule, Page No.-36 Item No.-2.	2.00	1015.00	each	2030.00
54	Supplying fitting and fixing 52 mm dia. Flush Pipe of approved make with necessary fixing materials and clamps complete. i) Polythene Flush Pipe P.W.D S&P Schedule, Page no 81 Item no. 11(i)	2.00	155.00	each	310.00
55	Supplying fitting and fixing urinal flush pipe fittings of approved brand (a) C.P. urinal flush pipe fittings range of one P.W.D S&P Schedule, S P 81, item-12/a	2.00	414.00	each	828.00
56	Supplying, fitting and fixing white vitreous china best quality approved make wash basin I) Fith C.I. brackets on 75 mm X 75 mm wooden blocks, C.P. waste fittings of 32 mm dia. ending good all damages and painting the brackets with two coats of approved paint 56 (ii) 550 mm X 400 mm size P.W.D S&P Schedule, P-41, It 2 (ii)	2.00	2208.00	each	4416.00

57	Supplying fitting and fixing pedestal of approved make for wash basin (White) PWD S&P Schedule. P-41 (i) 3	2 00	1497 00	each	2994 00
58	Supplying fitting and fixing approved brand P V C CONNECTOR white flexible, with both ends coupling with heavy brass C P nut, 15 mm dia, (iii) 600 mm long PWD S&P Schedule, Page No -43 Item No -9-iii	5 00	107 00	each	535 00
59	Supplying fitting and fixing approved brand 32 mm dia P V C waste pipe, with PVC coupling at one end fitted with necessary clamps (iv) 1050 mm long each PWD S&P Schedule, Page No -43 Item No. 10-iv	4 00	91 00	each	364 00
60	(f) Hand Shower(Health Faucet) with 1mtr Flexible Tube with Wall Hook(Equivalent to Code No 573 & Model -A.I.I.FD ofJaquar or similar) PWD S&P Schedule, Page No -3 Item No - 3 f.	2 00	1251 00	each	2502 00
61	(a) (i) Chromium plated Bib Cock short body (Equivalent to Code No. 511 & Model - Tropical/ Sumthing Special of ESSCO or similar brand) PWD S&P Schedule, Page No -6 Item No -7-a-i	3 00	539 00	each	1617 00
62	(b) (i) Chromium plated Stop Cock (Equivalent to Code No. 513(A) & 513(8) & Model- Tropical / Sumthing Special of ESSCO or similar PWD S&P Schedule, Page No -6 Item No -7-b-i	1 00	493 00	each	493 00
63	Chromium plated angular Stop Cock with wall flange (Equivalent to Code No. 5053 & Model - Florentine of Jaquar or similar brand). PWD S&P Schedule, Page No -6 Item No -7 d-i,	5 00	815 00	each	4075 00
64	Supplying, fitting and fixing pillar cock of approved make - a) (i) CP Pillar Cock - 15 mm. (Equivalent to Code No. 507 & Model - Tropical / Sumthing Special of ESSCO or similar brand) (P No. - 45, Item No - 19(a)), Pwd Sanitary Plumbing Schedule 2017)	2 00	555 00	each	1110 00
65	Supplying, fitting and fixing PVC pipes of approved make of Schedule 80 (medium duty) conforming to ASTM D - 1785 and threaded to match with GI Pipes as per IS - 1239 (Part - I) with all necessary accessories, specials viz. socket, bend, tee, union, cross, elbo, nipple, long screw, reducing socket, reducing tee, short piece etc fitted with holder bats clamps, including cutting pipes, making threads fitting, fixing etc complete in all respect including cost of all necessary fittings as required jointing materials and two coats of painting with approved paint in any position above ground (Payment will be made on the centre line measurements of total pipe line including all specials. No separate payment will be made for accessories, specials. Payment for painting will be made seperately) (a) For Exposed Work PVC Pipes, 25mm Page No -12 Item No -19-i(a), PWD, VOL-11, 2017-18	15 00	177 00	mtr.	2655 00
66	(a) (a) For Exposed Work PVC Pipes, 15 mm Page No -12 Item No -19-i(a), PWD, VOL-11, 2017-18	10 00	101 00	mtr.	1010 00
67	(b) For Concealed Work PVC Pipes, 15 mm Page No -12 Item No -19-i(b), PWD, VOL-11, 2017-18	10 00	137 00	mtr.	1370 00
68	Supplying and fitting fixing of gunmetal wheel valve of approved brand and make tested to 21 Kg per sq cm 25 mm dia(F5) PWD S&P Schedule, P-5 li-5, vii),	2 00	778 00	each	1556 00
69	Supplying P V C water storage tank of approved quality with closed top with lid (Black) - Multilayer (b) 1000 litre capacity PWDS&P Schedule, page 37, item no-6 (b)	2 00	5128 00	each	10256 00
70	Labour for hoisting plastic water storage tank. (i) Upto 1500 litre capacity (a) Upto 1st story from G.L. PWDS&P Schedule, page 37, item no-10 (i)(a)	2 00	96 00	each	192 00

71	1 hour for punching hole in plastic water storage tank upto 50 mm dia PWD S&P Schedule, (P No 38, Item No - 13				
72	Supply of UPVC pipes (B Type) & fittings conforming to IS-13592-1992 (A) m Single	6.00	19.00	each	114.00
73	(i) Coupler, (b) 110 mm	30.00	292.00	mtr	8760.00
74	(ii) Plain Tee, (b) 110 mm	8.00	85.00	each	680.00
75	(iii) Door Tee, (b) 110 mm	12.00	85.00	each	1020.00
76	(ix) Bend 45(b) 110 mm	10.00	195.00	each	1950.00
77	(xi) Door Bend (T S ), (b) 110 mm	10.00	89.00	each	890.00
78	(xvi) Pipe Clip, (b) 110 mm	7.00	147.00	each	1029.00
79	(xvii) W.C. Connector (150 mm lonal 125 X 110(w/WC Ring) 75 mm	20.00	21.00	each	420.00
80	(xxxi) Plain Floor Tran with Too tile & Strainer 75 mm	4.00	142.00	each	568.00
81	(L) Rubber Ring, (b) 110 mm	7.00	144.00	each	1008.00
82	(C) Rubber Lubricant 500 ML.	15.00	17.00	each	255.00
83	(D) Solvent Cement 250 ML.	1.00	187.00	500ml	187.00
84	(D) Solvent Cement 250 ML.	1.00	103.00	250ml	103.00
84	Labour for fitting and fixing U.P.V.C. pipes for above ground work including cost of jointing materials etc fitting and fixing all necessary specials, cutting pipes, cutting holes in total pipeline including specials. (B) Under ground, (ii) 110 mm dia PWD S&P Schedule, (P - 74, Item No - 24 (B)	25.00	84.00	mtr	2100.00
85	Supplying, fitting & fixing UPVC pipes A- Type and fittings conforming to IS.13592-1992 with all necessary clamps nails, including making holes in walls, floor etc cutting trenches in any soil through masonry concrete structures etc if necessary and mending good damages including joining with jointing materials (Spun Yarn, Valamoid/Bitumen/M-Seal etc) complete A) UPVC Pipes: (i) 75 mm. Dia. (P. - 212, Item No. - 21 (A)(i), (B),(c),(i) & (B), (d),(i). Pwd volume- i, 2017)	30.00	188.00	mtr.	5640.00
86	86 B) UPVC Fittings: c) Bend 87.5 degree (i) 75 mm. Dia.	6.00	95.00	mtr	570.00
87	87 B) UPVC Fittings: d) Shoe fit 75 mm. Dia.	2.00	78.00	mtr.	156.00
88	Constructing Inspection pit of inside measurement 600mm X 600mm X upto 600mm (depth) with 250 mm thick 1st class brick work in cement mortar (1:4) on all sides, bottom of the pit consisting of 100 mm thick cement concrete (1:3:6) with stone chips over a layer of jhama brick flat soling. 15 mm thick (1:4) cement plaster to inside walls and out-side walls upto G.L. and 20 mm thick (1:4) plaster to bottom of the pit, providing necessary invert with cement concrete (1:3:6) with stone chips as per direction, neat cement finishing to entire internal surfaces, top of the pit covered with 100 mm thick R.C.C. slab (1:1.5:3) with stone chips and necessary reinforcements upto 1% and 88 shuttering including 6 mm thick cement plaster (1:4) in all external surfaces of the slab and one 560 mm dia. R.C.C. manhole cover of approved make supplied, fitted and fixed in the slab with necessary fittings, necessary earthwork in excavation in all sorts of soil, filling sides of the pit with earth and removing spoils after work complete in all respect with all costs of labour and materials. i) With Pakur variety (Other than SAIL/TATA/RINI.) PWDS&P Schedule, S P 87, Item No-1/(i), 7th Corrigenda Volume II	3.00	6471.00	each	19413.00

89	<p>Construction of septic tank of different capacities as per approved drawing with 1st class brick work in cement mortar (1:4) including two 560 mm dia R.C.C. manhole cover (heavy type) of approved make supplied, fitted and fixed in the 100mm thick R.C.C. (1:1.5:3) top slab with necessary fittings, 20mm thick cement plaster (1:1) with neat cement finish to the internal surfaces and 15 mm thick cement plaster (1:1) to outside all upto 200 mm below G.L. floor finished with 25 mm thick grey artificial stone over 100 mm thick R.C.C. (1:1.5:3) bottom slab including supplying, fitting and fixing all necessary specials, fittings, S.W. tees, C.I. foot rest etc. including excavation earth in all sorts of soil, shoring, bailing out and pumping out water as necessary, ramming.</p> <p>89 dressing the bed and refilling the sides of the tanks with earth, removing spoils, filling up the chamber with clear water, removing foreign materials from the chamber and including constructing attached inspection pit as per approved drawing and connecting all necessary pipes, joints etc. with internal plaster work and artificial stone flooring is to be done with admixture of water proofing compound @ 0.5% by weight of cement with all costs of labour and materials.</p> <p>(ii) For 20 users ) With Pakur variety QSW/JSPL/SHYAM/SRMB/ELECTROSTEEI/SSL) P, WDS&amp;P Schedule, S.P.88, Item No-3(ii)(A) 7th Corrigenda Volume ii</p>	1.00	82612.00	each	82612.00
90	<p>Construction of circular soak well 2.5 metre deep in all types of sandy soils with dry brick work upto 1.6 metre from the bottom having 150 mm intermediate cement brick work (1:4) band all round and cement brick work (1:4) upto 0.90 metre from top with 20mm thick cement plastering (1:4) to inside face upto the depth of cement brick work, 5mm thick cement plaster (1:4) on outer face from top of the well upto G.L. and 6 mm 1/2 thick cement plaster (1:4) on top of the R.C.C. cover slab including filling bottom 1.00 metre of inside of the well with brick metal (50 mm to 63 mm size) including R.C.C. cover slab of 100 mm thick with cement cone (1:1.5:3) with stone chips with necessary reinforcement and shuttering including one 560 mm dia R.C.C. manhole cover (heavy type) of approved make supplied, fitted and fixed in the cover slab with necessary fittings, making necessary arrangements for pipe connections, excavation of well including shoring, dewatering and removing the excess earth from the premises as per direction complete in all respect with all costs of labour and materials. With 250 mm thick dry brick work and 250 mm thick cement brick work (1:6) and 1.00m inside dia. (Other than SAII/TATA/RINI.)</p> <p>S.P.89, Item No-4 7th Corrigenda Volume ii</p>	1.00	15599.00	each	15599.00
91	<p>Supplying, fitting and fixing towel rail with two brackets (a) C.P. over brass (ii) 25 mm dia. and 600 mm long No- 22 (a)(ii) PWD S&amp;P Schedule, p No 82</p>	2.00	430.00	each	860.00
92	<p>Supplying, fitting and fixing bevelled edged mirror 5.5 mm thick silver red as per I.S. 3438 / 1965 together with brass C.P. hinges (ii) 600 mm X 450 mm PWD S&amp;P Schedule, P-81, Jt-15(ii)</p>	2.00	484.00	each	968.00
93	<p>Supplying, fitting and fixing soap holder (b) Fibre glass Sanitary and plumbing work schedule P-82, Jt-18(b)</p>	2.00	58.00	each	116.00

plying, fitting and fixing glass shelf with aluminium guard rails a) Ordinary type with 5.5 mm sheet glass b) 450 mm X 125 mm Sanitary and plumbing work schedule P-81, It-16(a)(i)	2.00	341.00	each	682.00
558611.94 ←	Sub Total Of (A)			844016.63
50275.07 ←	Add S.G.S.T. @ 0.09			75961.50
50275.07 ←	Add C.G.S.T. @ 0.09			75961.50
659162.08 ←	Cost Of Civil & Sanitary Work			995939.63
6591.62 ←	Add L.W.C. @ 0.01			9959.40
665753.70 ←	Total payable Amount Including L.W.C.			1005999.03
19774.86 ←	Add Contengency @3%			29878.19
685528.56 ←	Total payable Amount Including L.W.C. and contengency			1035777.22
685529.00 ←	Say Rs.			1035777.00

*Sobal*  
21/05/25.  
Sub Assistant Engineer,  
Dinhata Municipality

*Am*  
22/05/25  
Chairman  
Dinhata Municipality

MAY BE VETTED

*Am*  
23/06/25.

Assistant Engineer  
Cooch Behar Division M.E. Dte.  
Govt. of West Bengal

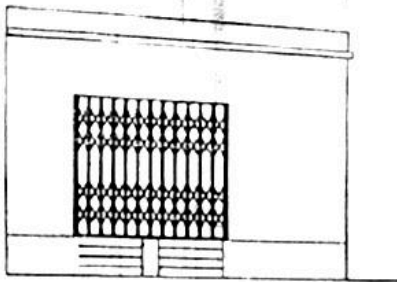
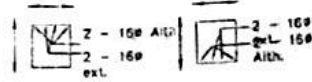
VETTED

*Am*  
24/6/25

Executive Engineer  
Cooch Behar Division M.E. Dte.  
Govt. of West Bengal

*Am*  
23/06/25  
Junior Engineer  
Cooch Behar Division M.E. Dte.  
Govt. of West Bengal

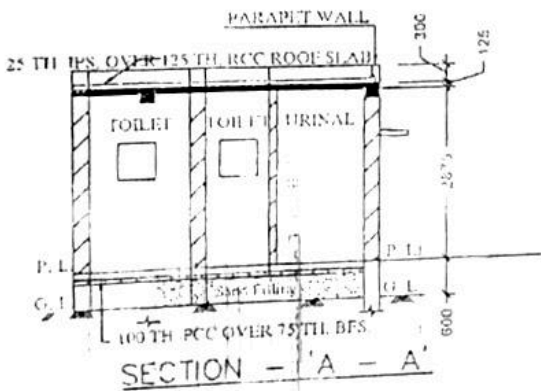
MODEL DRAWING FOR CONSTRUCTION OF C. T./P.T.  
TOILET SEATS 2 NOS URINAL 3 NOS  
MODEL NO.- F



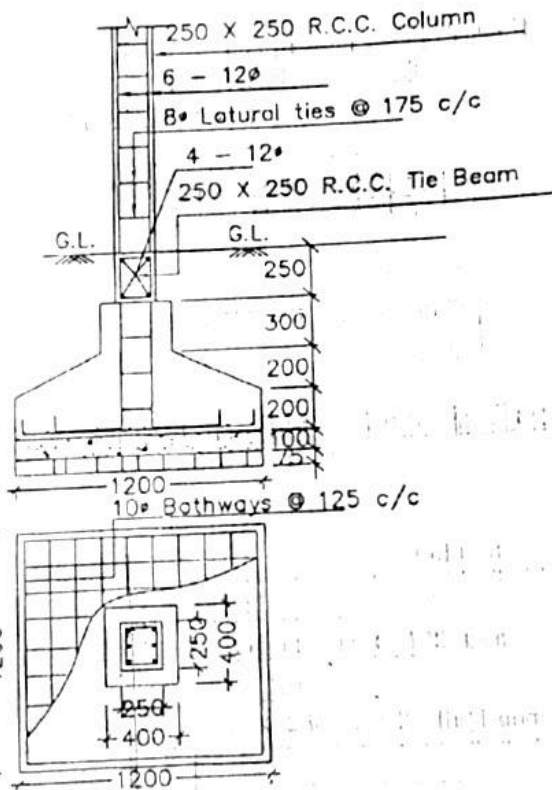
FRONT ELEVATION



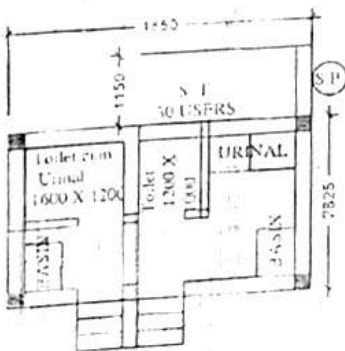
Details Of R.C.C Roof Slab & Beam  
(SCALE - 1 : 25)



SECTION - 'A - A'



DETAILS OF R. C. C COLUMN  
(SCALE - 1 : 25)



*[Signature]*  
21/05/25  
Sub Assistant Engineer,  
Dinhata Municipality

*[Signature]*  
22/05/25  
Chairman  
Dinhata Municipality

Checked & Verified

*[Signature]*  
Himanshu Bhattacharya  
Engineer (Civil)  
Hiji INSPIRATION



*[Signature]*  
23/06/25  
Assistant Engineer  
Coch Behar Division M.E. Die  
Govt. of West Bengal