

CONSTRUCTION OF TOILET BLOCK (CT/PT) MODEL NO - F AT RAJU DAS BURNING GHAT, HARIDAS
 ROAD, WARD 04, PLOT NO - 2694, KHATIAN NO - 01, MOUZA - MAJILPUR, WITHIN THE JAYNAGAR
 MAJILPUR MUNICIPALITY
 CIVIL & PLUMBING WORKS
 TOILET SEATS - 2 NOS AND URINAL - 3 NOS

Sl. NO	Item Description & Item No.	Quantity	Rate	Unit	Amount
1	Earth work in excavation of foundation trenches or drains, in all sorts of soil (including mixed soil but excluding laterite or sandstone) including removing, spreading or stacking the spoils within a lead of 75 m. as directed. The item includes necessary trimming the sides of trenches, levelling, dressing and ramming the bottom, bailing out water as required complete. (a) Depth of excavation not exceeding 1,500 mm. PWD Building Works schedule Page - 1, Item -2.a	7.450	119.27	Cu.m	888.56
2	Earth work in filling in foundation trenches or plinth with good earth, in layers not exceeding 150 mm, including watering and ramming etc layer by layer complete. (Payment to be made on the basis of measurement of finished quantity of work) (a) With earth obtained from excavation of foundation, PWD Building Works schedule, Page - 1, Item -3.a 5.816 x 1/5 = 1.16 m ³	2.480	77.54	%um	192.30
3	(A) Filling in foundation or plinth by silver sand in layers not exceeding 150 mm as directed and consolidating the same by thorough saturation with water, ramming complete including the cost of supply of sand. (payment to be made on measurement of finished quantity) PWD Building Works schedule, Page - 2, Item -4.a	4.050	936.21	Cum	3791.65
4	Single Brick Flat Soling of picked jhama bricks including ramming and dressing bed to proper level and filling joints with local sand PWD Building Works schedule, Page- 14, Item - 1 (Corri, Page-01, Date-04-06-2018)	20.80	361.00	Sqm	7508.80
5	Ordinary Cement concrete (mix 1:1.5:3) with graded stone chips (20 mm nominal size) excluding shuttering and reinforcement, if any, in ground floor as per relevant IS codes. a) Pakur Variety / Chandil Variety PWD Building Works schedule, p-26 Item 10 a (Rate Analysis)	7.280	6040.55	Cum	43975.20
6	Cement concrete with graded jhama khoa (30 mm size) excluding shuttering in ground floor and foundation. (a) 1:3:6 proportion. PWD Building Works schedule, Page - 23, Item -B.1.a, (Corri, Page- 09, Date-04-06-2018) Rate Analysis1 (Corri, Page-01, Date-04-06-2018)	1.660	4628.87	m ³	7683.92

Item Description & Item No.	Quantity	Rate	Unit	Amount
<p>100 mm. thick damp proof course with cement concrete with stone chips (1:1.5:3) [with graded stone aggregate 10 mm nominal size] and admixture of water proofing compound as per manufacturer's specification followed by two coat of polymer based paint, (1st coat after 4 to 5 days of concrete laying and 2 nd coat just before brick masonry work) as directed (cost of water proofing compound & polymer based paint to be paid separately) (Chequering not required over concrete or painted surface). [Note: - Waterproofing as per item 9, polymer based paint as per item 8 (a) of subhead C of Section (C). PWD Building Works schedule, Page -47, Item -1 (Rate Analysis)</p>	20.71	184.28	Sqm	3816.44
<p>8 125 mm brick work with 1st class bricks in cement mortar (1:4) in ground floor. PWD Building Works schedule, Page -16, Item-16, cori page -3, date -04.06 2018 (Rate Analysis)</p>	22.08	728.47	Sq.M.	19668.69
<p>9 Supplying and laying polythine sheet (150 gm/sq.m) over damp proof course or below flooring or roof terracing or foundation or foundation trenches. PWD Building Works schedule, Page -47, Item-3</p>	21.00	24.00	Sq.M.	908.88
<p>10 Hire and labour charges for shuttering with centering and necessary staging upto 4 m using approved stout props and thick hard wood planks of approved thickness with required bracing for concrete slabs, beams and columns, lintels curved or straight including fitting, fixing and striking out after completion of works (upto roof of ground floor) (f) 25 mm to 30 mm shuttering without staging in foundation PWD Building Works schedule, Page -42, item- 36.f</p>	12.18	209.00	Sqm	2545.62
<p>11 Hire and labour charges for shuttering with centering and necessary staging upto 4 m using approved stout props and thick hard wood planks of approved thickness with required bracing for concrete slabs, beams and columns, lintels curved or straight including fitting, fixing and striking out after completion of works (upto roof of ground floor) (a) 25 mm to 30 mm thick wooden shuttering as per decision & direction of Engineer-In-Charge. PWD Building Works schedule, Page -42, item- 36.a</p>	47.51	335.00	Sqm	15915.85
<p>12 Artificial stone in floor ,dado, staircase etc with cement mortar (1:2:4) with stone chips laid in panels as directed with topping made with ordinary or white cement (as necessary) and marble dust in proportion (1:2) including smooth finishing and rounding off corners including raking out joints or roughening of concrete surface and application of cement slurry before flooring works using cement @ 1.75 kg/ sq.m all complete including all materials and labour. In ground floor 3 mm thick topping - using gray cement (1:2) 25 mm PWD Building Works schedule, p-48 Item 6(ii)</p>	9.53	265.95	Sq.m	6447.93

Item Description & Item No.	Quantity	Rate	Unit	Amount
<p>Preparation for reinforced concrete work in all sorts of structures including distribution bars, stirrups, binders etc initial straightening and removal of loose rust (if necessary), cutting to requisite length, hooking and bending to correct shape, placing in proper position and binding with 16 gauge black annealed wire at every intersection, complete as per drawing and direction. (a) For works in foundation and upto roof of ground floor/upto 4 m. (i) For steel/Mild Steel, ISPL/SWAYN/ELETRD/STEEL PWD Building Works schedule, Page -43, Item - 40.a.i.1(Corri. 10th Page-01, Date-23-01-2020) (Rate Analysis) item no. .</p>	0.686	54841.43	M.T.	37621.22
<p>14 Collapsible gate with 40 mm x 10 mm x 6 mm Tee as top and bottom guide rail, 20 mm x 10 mm x 2 mm vertical channels 100 mm apart in full stretched position 20m x 5 mm MS flats as collapsible bracings properly riveted and washered including 38 mm steel roller including locking arrangements, fitted and fixed in position with lugs set in cement concrete including cutting necessary hicks chasing etc in walls, floors etc and making good all damages PWD Building Works schedule, Page -106, Item- 18</p>	4.20	4330.00	Sq.m	14288.40
<p>15 Brick work with 1st class bricks in cement mortar (1:4) (a) Foundation and plinth ground floor PWD Building Works schedule, Page -15, Item-7.a (Rate Analysis)</p>	2.860	5613.36	Cu.m	16054.21
<p>16 Brick work with 1st class bricks in cement mortar (1:4) (b) superstructure ground floor PWD Building Works schedule, Page -15, Item-7.b (Rate Analysis)</p>	7.79	5836.36	Cu.m	45465.24
<p>17 Labour for Chipping of concrete surface before taking up Plastering work. PWD Building Works schedule, P-192, It-1</p>	47.51	21.00	Sq.m	997.71
<p>18 Plaster (to wall, floor, ceiling etc.) with sand and cement mortar including rounding off or chamfering corners as directed and raking out joints including throating, nosing and drip course, scaffolding/staging where necessary (Ground floor). [Excluding cost of chipping over concrete surface] (i) With 1:6 cement mortar (c) 15 mm thick plaster PWD Building Works schedule, P-189 It- No. 1 (Rate Analysis)</p>	84.99	148.53	Sq.m	29325.76
<p>19 Plaster (to wall, floor, ceiling etc.) with sand and cement mortar including rounding off or chamfering corners as directed and raking out joints including throating, nosing and drip course, scaffolding/staging where necessary (Ground floor). [Excluding cost of chipping over concrete surface] (ii) With 1:4 cement mortar (c) 10 mm thick plaster PWD Building Works schedule, P-189 It- No. 1 (ii)(c) (Rate Analysis)</p>	13.70	130.53	Sq.m	1788.26
<p>20 Neat cement punning about 1.5 mm thick in wall, dado, window sills, floors etc Note cement 0.152 m³/100 m² PWD Building Works schedule, P-192 It- No. 15</p>	9.21	32.75	Sq.m	301.63
<p>21 Supplying, fitting and fixing fibre reinforced polymer (FRP) Composite door frame as per approved section with glass fibre reinforced plastic moulded skins and a special sandwich core, so as to impart monolithic composite structure as per approved technology of Department of Science and Technology (DST) to satisfy IS: 4020 door testing performance criteria. (i) 66mm x 90mm PWD Building Works schedule, P-115, It- 3 (i)</p>	9.90	497.00	Mtr	4920.30

Item Description & Item No.	Quantity	Rate	Unit	Amount
<p>Supplying, fitting & fixing fibre reinforced polymer (FRP) Composite shutters as per approved design with glass fibre reinforced plastic moulded skins and a special sandwich core, so as to impart monolithic composite structure as per approved technology of Department of Science and Technology (DST) to satisfy IS-4020 door testing performance criteria. In ground floor.</p> <p>ii) 25 mm thick P-125, It-14(ii)</p>	3.15	2581.00	Sqm	8130.15
<p>Anodised aluminium barrel / tower / socket bolt (full covered) of approved manufactured from extruded section conforming to I.S. 204/74 fitted and fixed with cadmium plated screws. (vii) 225mm long x 10mm dia. bolt.</p> <p>PWD Building Works schedule, P-144, It No. -26 (vii)</p>	4.00	84.00	Each	336.00 420.00
<p>Iron butt hinges of approved quality fitted and fixed with steel screws, with ISI mark. (viii) 100mm X 75mm X 3.50mm.</p> <p>PWD Building Works schedule, P-140, It No. -5 (viii)</p>	6.00	66.00	Each	396.00 990.00
<p>Anodised aluminium decorative handle (hexagonal / fluted) of approved quality fitted and fixed complete.</p> <p>(i) 150mm plate x 10mm dia rod x 12mm hexagonal/fluted.</p> <p>PWD Building Works schedule, Page -146, Item no-31, (i)</p>	4.00	87.00	Each	348.00 870.00
<p>Supplying and laying chequered tiles of any shade and of approved quality with (1:1.5:3) cement concrete laid in pannels or patterns as directed in pavement, footpath etc including necessary underlay 25 mm thick (avg) cement mortar (1:3) complete in all respect with all labour and materials. (Using cement slurry @4.4kg/sq.m at back side and @2.4 kg/sq.m for joint filling).</p> <p>PWD Building Works schedule, Page -74, Item no- 45(i), 25 mm thick</p>	3.04	468.67	sq.m	1424.76
<p>Rendering the Surface of walls and ceiling with White Cement base WATER PROOF wall putty of approved make & brand.(1.5 mm thick) in Ground Floor</p> <p>PWD Building Works schedule, PWD, P- 198, I - 5</p>	34.12	122.00	Sqm	4162.64
<p>Acrylic Distemper to interior wall, ceiling with a coat of solvent based interior grade acrylic primer (as per manufacturer's specification) including cleaning and smoothing of surface PWD Building Works schedule, Page -196, Item no- 10.</p>	34.12	70.00	m2	2388.40
<p>Applying exterior grade Acrylic Primer of approved quality and brand on plastered or concrete surface old or new surface to receive Decorative Textured (Marrrt Finish) or Smooth Finish Acrylic exterior emulsion paint including scraping and preparing the surface thoroughly, complete as per manufacturer's specification and as per direction of the EIC in Ground Floor (b) two coats.</p> <p>PWD Building Works schedule, Page -196, Item no- 8(b)</p>	64.57	45.10	m2	2912.11

Item Description & Item No.	Quantity	Rate	Unit	Amount
Protective and Decorative Acrylic Exterior emulsion paint of approved quality, as per manufacturer's specification and as per direction of EIC to be applied over Acrylic primer as required. The rate includes cost of materials, labour, scaffolding and all incidental charges but excluding the cost of primer in ground floor (two coats)(a) normal acrylic emulsion. PWD Building Works schedule, Page -197, Item no- 17(a)	64.57	67.00	m2	4326.19
30 (a) M.S. or W.I. Ornamental grill of approved design joints continuously welded with M.S. W.I. Flats and bars of windows, railing etc. fitted and fixed with necessary screws and lugs in ground floor. (i) Grill weighing above 10 Kg./sq.mtr and up to 16 Kg./sq. mtr. PWD Building Works schedule, -P-104 Item-13 A (i) (3rd Corrigendum Page No 91)	0.101	9888.00	Qntl	998.69
31 a) Priming one coat on steel or other metal surface with synthetic oil bound primer of approved quality including smoothening surfaces by sand papering etc. PWD Building Works schedule, P/200 Item-1(a)	10.35	29.00	Sqm	300.15
32 (A) Painting with best quality synthetic enamel paint of approved make and brand including smoothening surface by sand papering etc. including using of approved putty etc. on the surface, if necessary : (b) On steel or other metal surface : (iv) Two coats (with any shade except white) PWD Building Works schedule, P-200 Item-2(b)(iv)	10.35	79.00	Sqm	817.65
33 Supplying, fitting & fixing 1st quality Ceramic tiles in walls and floors to match with the existing work & 4 nos. of key stones (10mm) fixed with araldite at the back of each tile & finishing the joints with white cement mixed with colouring oxide if required to match the colour of tiles including roughening of concrete surface, if necessary or by synthetic adhesive & grout materials etc. A) Floor With Sand Cement Mortar [1:4] 20 mm thick & 2 mm thick cement slurry at back side of tiles using cement @ 2.91 Kg/Sq.m & joint filling using white cement slurry @ 0.20kg/Sq.m (b) Area of each tile above 0.09 Sq.m (i) Coloured decorative PWD Building Works schedule, Page-64 Item-35 (A) (3rd corrigenda)	9.82	913.07	Sqm	8969.20
34 Supplying, fitting & fixing 1st quality Ceramic tiles in walls and floors to match with the existing work & 4 nos. of key stones (10mm) fixed with araldite at the back of each tile & finishing the joints with white cement mixed with colouring oxide if required to match the colour of tiles including roughening of concrete surface, if necessary or by synthetic adhesive & grout materials etc. (b) Wall With Sand Cement Mortar [1:3] 15 mm thick & 2 mm thick cement slurry at back side of tiles using cement @ 2.91 kg/Sq.m & joint filling using white cement slurry @ 0.20kg/Sq.m. Area of each tile above 0.09 Sq.m	43.27	1040.07	Sqm	45003.83

	Item Description & Item No.	Quantity	Rate	Unit	Amount
	Supplying profiles of required section made of Aluminium Alloy conforming to IS: 732-1983 and IS: 1285-1975; Anodized with required film thickness and specified colour / natural matt finished conforming to IS: 1868-1983 for fabrication of composite door, sliding & casement windows, partitions, formed of basic sections of any ISI embossed / certified make and brand as per direction of Engineer - In- Charge. (Payment will be made on finished length of the work). (A) In 10-12 Micron thickness Anodizing film i) Natural white ii) Louvered window. (j) Top, bottom and side member. PWD Building Works schedule, PWD, P-233, I- 1(h) i	7.50	183.00	M	1372.50
36	ii) Louvered Section,	3.00	658.00	M	1974.00
38	iii) Cleat angle (Non-anodized).	3.00	263.00	M	789.00
39	Supplying bubble free float glass of approved make and brand conforming to IS: 2835-1987. iv) 5mm thick coloured / tinted / smoke glass. PWD Building Works schedule, P-243, I-9	0.68	585.00	Sq.M.	397.80
40	Painting block letters or digits in Black Japan or any approved paint as per direction. e) Size above 7.5 cm. and upto 10 cm. PWD Building Works schedule, P-268, It-17(e)	450.00	12.00	Each	5400.00
41	Supplying and planting of different plants / trees (supplying well grown plants bushy and healthy, minimum height as specified i.e. exposed height including all leads and lifts, carriage, handling, manuring applying pesticide and fertilizer etc. i) Furcaria Veriegated 10 to 12 leaves in height 20-30 cm in earthen pot of size 25 cm	10.00	162.00	Each	1620.00
41	x) Ficus blakii (F. Vivicon) well branched (Bushy) of height 120cm - 135 cm in earthen pot of size 30cm. PWD Building Works schedule, Page -261, It- 9 (x)	3.00	187.00	Each	561.00
42	xxvi) Areca Palm 4 - 5 suckers of height 90 cm to 105 cm in earthen pots of size 25 cm PWD Building Works schedule, Page -261, It- 9 (xxvi)	3.00	127.00	Each	381.00
SANITARY AND PLUMBING WORKS					
43	Supplying, fitting and fixing Anglo-Indian W.C. in white glazed vitreous china ware of approved make complete in position with necessary bolts, nuts etc. a) With 'P' trap (with vent) PWD S&P schedule, page-79, item no -3 (a)	2.00	3104.00	Each	6208.00
44	Supplying, fitting and fixing Closet seat of approved make with lid and C.P. hinges, rubber buffer and brass screws complete. (b) Anglo Indian (i) Plastic (hallow type) White PWD S&P Schedule, page-81, item no 10.b.i	2.00	485.00	Each	970.00
45	Supplying, fitting and fixing Flat back urinal (half stall urinal) in white vitreous chinaware of approved make in position with brass screws on 75 mm X 75 mm X 75 mm wooden blocks complete. (ii) 470 mm X 280 mm X 340 mm PWD S&P schedule, page-80, item no-6/(ii)	2.00	945.00	Each	1890.00

	Item Description & Item No	Quantity	Rate	Unit	Amount
	Supplying fitting and fixing squatting plate with integrated flushing in white vitreous set in cement concrete (6:3:1) with jhama chips complete, (Payment of concrete will be paid seperately) (i) 450 mm x 350 mm	2.00	881.00	each	1762.00
42	Supplying, fitting and fixing 10 litre P.V.C. low-down cistern conforming to I.S. specification with P.V.C. fittings complete, C.I. brackets including two coats of painting to bracket etc. PWD S&P Schedule, Page No.-36 Item No.-2,	2.00	1015.00	Nos	2030.00
44 48	Supplying, fitting and fixing 32 mm dia. Flush Pipe of approved make with necessary fixing materials and clamps complete. (i) Polythene Flush Pipe PWD S&P Schedule, Page no 81, Item no. 11(i)	2.00	155.00	Each	310.00
46 49	Supplying, fitting and fixing urinal flush pipe fittings of approved brand. (a) C.P. urinal flush pipe fittings range of one PWD S&P Schedule, S.P.81, item-12/a	2.00	414.00	Each	828.00
48 50	Supplying, fitting and fixing white vitreous china best quality approved make wash basin with C.I. brackets on 75 mm X 75 mm wooden blocks, C.P. waste fittings of 32 mm dia., one approved quality brass C.P. pillar cock of 15 mm dia., C.P. chain with rubber plug of 30 mm dia., approved quality P.V.C. waste pipe with C.P. nut 32 mm dia., 900 mm long approved quality P.V.C. connection pipe with heavy brass C.P. nut including mending good all damages and painting the brackets (ii) 550 mm X 400 mm size PWD S&P Schedule, P-41, It 2 (ii)	2.00	2208.00	Each	4416.00
49 51	Supplying fitting and fixing pedestal of approved make for wash basin (White) PWD S&P Schedule, P-41, It 3	2.00	1497.00	Each	2994.00
50 52	Supplying, fitting and fixing approved brand P.V.C. CONNECTOR white flexible, with both ends coupling with heavy brass C.P. nut, 15 mm dia., (iii) 600 mm long PWD S&P Schedule, Page No.-43 Item No.-9-iii	5.00	107.00	Each	535.00
51 53	Supplying, fitting and fixing approved brand 32 mm dia. P.V.C. waste pipe, with PVC coupling at one end fitted with necessary clamps. (iv) 1050 mm long each PWD S&P Schedule, Page No. -43 Item No. 10-iv	2.00	91.00	Each	182.00
52 54	Supplying, fitting and fixing shower of approved brand and make (f) Hand Shower (Health Faucet) with 1mtr Flexible Tube with Wall Hook (Equivalent to Code No 573 & Model -ALLIED of Jaquar or similar) PWD S&P Schedule, Page No.-3 Item No.-3 f,	2.00	1251.00	Each	2502.00
53 55	(a) (i) Chromium plated Bib Cock short body (Equivalent to Code No. 511 & Model - Tropical / Sumthing Special of ESSCO or similar brand). PWD S&P Schedule, Page No.-6 Item No.-7-a-i	3.00	539.00	Each	1617.00
54 56	(b) (i) Chromium plated Stop Cock (Equivalent to Code No. 513(A) & 513(B) & Model - Tropical / Sumthing Special of ESSCO or similar PWD S&P Schedule, Page No.-6 Item No.-7-b-i	3.00	493.00	Each	1479.00
55 57	Chromium plated angular Stop Cock with wall flange (Equivalent to Code No. 553 & Model - Florentine of Jaquar or similar brand). PWD S&P Schedule, Page No.-6, Item No. -7-d-i	3.00	815.00	Each	2445.00

Item Description & Item No.

	Quantity	Rate	Unit	Amount
Supplying, fitting and fixing PVC pipes of approved make of Schedule (medium duty) conforming to ASTM D - 1785 and threaded to match with GI Pipes as per IS - 1239 (Part - I), with all necessary accessories, specials viz. socket, bend, tee, union, cross, elbo, nipple, long screw, reducing socket, reducing tee, short piece etc. fitted with holder bits clamps, including cutting pipes, making threads, fitting, fixing etc. complete in all respect including cost of all necessary fittings as required, jointing materials and two coats of painting with approved paint in any position above ground. (Payment will be made on the centre line measurements of total pipe line including all specials. No separate payment will be made for accessories, specials. Payment for painting will be made separately) (a) For Exposed Work PVC Pipes, 25 mm Page No.-12 Item No.-19-i(a), PWD,VOL-II, 2017-18	15.00	177.00	Mtr	2655.00
59 (a) (a) For Exposed Work PVC Pipes, 15 mm Page No.-12 Item No.-19-i(a), PWD,VOL-II, 2017-18	10.00	101.00	Mtr	1010.00
60 (b) for Concealed Work PVC Pipes, 15 mm Page No.-12 Item No.-19-i(b), PWD,VOL-II, 2017-18	10.00	137.00	Mtr	1370.00
61 Supply of Chlorinated Polyvinyl Chloride (CPVC) pipes & fittings conforming to IS-15778: 2007 (Q) Ball Valve (25 mm Dia) PWD S&P Schedule - P-30 It. 2	2.00	778.00	Each	1556.00
62 Supplying P.V.C. water storage tank of approved quality with closed top with lid (Black) - Multilayer (b) 3000 litre capacity PWD S&P Schedule, page 37, item no-6 (b)	2.00	5128.00	Each	10256.00
63 Labour for hoisting plastic water storage tank. (i) Upto 1500 litre capacity. (a) Upto 1st story from G.L. PWD S&P Schedule, page 37, item no-10 (i)(a)	2.00	96.00	Each	192.00
64 Labour for punching hole in plastic water storage tank upto 50 mm dia. PWD S&P Schedule, (P. No. - 38, Item. No. - 13)	4.00	19.00	Each	76.00
65 Supply of UPVC pipes (B Type) & fittings conforming to IS-13582-1992 (A) (i) Single Socketed 3 Meter Length, (b) 110 mm PWD S&P Schedule, Page No.-68 Item No. 23,(A)(i)(b)	30.00	292.00	Mtr	8760.00
66 (B) Fittings (i) Coupler, (b) 110 mm	8.00	85.00	Each	680.00
67 (ii) Plain Tee, (b) 110 mm	12.00	85.00	Each	1020.00
68 (iii) Door Tee, (b) 110 mm	10.00	195.00	Each	1950.00
69 (xi) Bend 45°, (b) 110 mm	10.00	89.00	Each	890.00
70 (xii) Door Bend (T.S.), (b) 110 mm	7.00	147.00	Each	1029.00
71 (xvi) Pipe Clip, (b) 110 mm	30.00	21.00	Each	630.00
72 (xvii) W.C. Connector (150 mm long) 125 X 110(W/WC Ring) 75 mm	4.00	142.00	Each	568.00
73 (xxi) Plain Floor Trap with Top tile & Strainer 75 mm	7.00	144.00	Each	1008.00
74 (L) Rubber Ring, (b) 110 mm	15.00	17.00	Each	255.00
75 (C) Rubber Lubricant 500 ML	1.00	187.00	500 ML	187.00
76 (D) Solvent Cement 250 ML	1.00	103.00	250 ML	103.00

	Item Description & Item No.	Quantity	Rate	Unit	Amount
	<p>for fitting and fixing U.P.V.C. pipes for above ground work including cost of jointing materials etc. fitting and fixing all necessary specials, cutting pipes, cutting holes in walls or R.C. floor where necessary and mending good all damages excluding the cost of masonry or concrete work, if necessary, but including the cost and fitting and fixing holder bat clamps (any floor) or for underground work including cutting trenches upto 1.5 metre and refilling the same complete as per direction of the Engineer-in-charge. (Payment will be made on centre line measurement of the total pipeline including specials.)</p> <p>PWD S&P Schedule. (P. - 74, Item No. - 24 (B))</p>	20.00	84.00	Mtr	1680.00
28	<p>supplying, fitting & fixing UPVC pipes A-Type and fittings conforming to IS-13592-1992 with all necessary clamps nails, including making holes in walls, floor etc. cutting trenches in any soil through masonry concrete structures etc if necessary and mending good damages including joining with jointing materials (Spun Yarn, Valamoid/Bitumen/M-Seal etc) complete</p> <p>A) UPVC Pipes: (i) 75 mm. Dia.</p> <p>(P. - 212, Item No. - 21 (A)(i), (B),(c),(i) & (B); (d),(i), Pwd volume- I, 2017)</p>	20.00	188.00	Mtr	3760.00
30	B) UPVC Fittings- c) Bend 87.5 degree (i) 75 mm. Dia.	6.00	84.00	Nos	504.00
30	B) UPVC Fittings- d) Shoe (i) 75 mm. Dia.	2.00	78.00	Nos	156.00
81	<p>Constructing inspection pit of inside measurement 600mm x 600mm X upto 600mm (depth) with 250 mm thick 1st. class brick work in cement mortar (1:4) on all sides, bottom of the pit consisting of 100 mm thick cement concrete (1:3:6) with stone chips over a layer of 100mm brick flat soling, 15 mm thick (1:4) cement plaster to inside walls and out-side walls upto G.L. and 20 mm.thick (1:4) plaster to bottom of the pit, providing necessary inverts with cement concrete (1:3:6) with stone chips as per direction, neat cement finishing to entire internal surfaces, top of the pit covered with 100 mm thick R.C.C. slab (1:1.5:3) with stone chips and necessary reinforcements upto 1% and shuttering including 6 mm thick cement plaster (1:4) in all external surfaces of the slab and one 560 mm dia. R.C.C. manhole cover of approved make supplied, fitted and fixed in the slab with necessary fittings, necessary earthwork in excavation in all sorts of soil, filling sides of the pit with earth and removing spoils after work complete in all respect with all costs of labour and materials.</p> <p>(i) With Pakur variety (ISW/ISPL/SHYAM/SRMB/BMASL/VELECTROSSTEEL/55L)</p> <p>PWD S&P Schedule, S.P.87, Item No-1/(i), 7th Corrigenda Volume II</p>	2.00	7248.00	Each	14496.00
82	<p>Construction of septic tank of different capacities as per approved drawing with 1st class brick work in cement mortar (1:4) including two 560 mm dia. R.C.C. manhole cover (heavy type) of approved make supplied, fitted and fixed in the 100mm thick R.C.C (1:1.5:3) top slab with necessary fittings, 20mm thick cement plaster (4 : 1) with neat cement finish to the internal surfaces and 15 mm thick cement plaster (4 : 1) to outside wall upto 200 mm below G.L floor finished with 25 mm thick grey artificial stone over 100 mm thick R.C.C(1:1.5:3) bottom slab including supplying, fitting and fixing all necessary specials, fittings, S.W. fees, C.I. foot rest etc. including excavation earth in all sorts of soil, shoring, bailing out and pumping out water as necessary, ramming, dressing the bed and refilling the sides of the tanks with earth, removing spoils, filling up the chamber with clear water, removing foreign materials from the chamber and including constructing attached inspection pit as per approved drawing and connecting all necessary pipes, joints etc. with internal plaster work and artificial stone flooring to be done with admixture of water proofing compound @ 0.5% by weight of cement with all costs of labour and materials.</p> <p>(ii) For 20 users</p>	1.00	48162.00	Each	48162.00

Item Description & Item No.	Quantity	Rate	Unit	Amount
Construction of circular soak well 2.5 metre deep in all types of sandy soils with dry brick work upto 1.6 metre from the bottom having 150 mm immediate cement brick work (1:4) band all round and cement brick work (1:4) upto 0.90 metre from top with 20mm thick cement plastering (1:4) to inside face upto the depth of cement brick work, 15mm thick cement plaster (1:4) on outer face from top of the well upto 0.1 and 6 mm thick cement plaster (1:4) on top of the R.C.C. cover slab including filling bottom 1.00 metre of inside of the well with brick metal (50 mm to 63 mm size) including R.C.C. cover slab of 100 mm thick with cement conc (1:1.5:3) with stone chips with necessary reinforcement and shuttering including one 560 mm dia. R.C.C. manhole cover (heavy type) of approved make supplied, fitted and fixed in the cover slab with necessary fittings, making necessary arrangements for pipe connections, excavation of well including shoring, dewatering and removing the excess earth from the premises as per direction complete in all respect with all costs of labour and materials. With 250 mm thick dry brick work and 250 mm thick cement brick work (1:6) and 1.00m inside dia. For - JSW/JSP/SHYAM/SRMB/BMASL/ELECTROSTEEL/SSL S.P. 85, Item No-4 7th Corrigeenda Volume II	1.00	16621.00	Each	16621.00
84 Supplying, fitting and fixing towel rail with two brackets. (b) Aluminium (ii) 25 mm dia. and 600 mm long Schedule, p No 82 I No- 22 (a)(ii)	2.00	164.00	Each	328.00
85 Supplying, fitting and fixing bevelled edged mirror 5.5 mm thick silver red its per I.S. 3438 / 1965 together with brass C.P. hinges. (ii) 600 mm X 450 mm PWD S&P Schedule, P-81, It-15(ii)	2.00	484.00	Each	968.00
86 Supplying, fitting and fixing soap holder. (b) Fibre glass Sanitary and plumbing work schedule P-82, It-18(b)	2.00	58.00	Each	116.00 496.00
87 Supplying, fitting and fixing glass shelf with aluminium guard rails. (a) Ordinary type with 5.5 mm sheet glass (i) 450 mm X 125 mm Sanitary and plumbing work schedule P-81, It-16(a)(iii)	2.00	341.00	Each	682.00
		506039.54		506951.64
Add S.G.S.T. @		45543.56	9%	45805.61
Add C.G.S.T. @		45543.56	9%	45805.61
Cost Of Civil Work		597126.65		609562.94
Add Labour Welfare Cess. @		5971.27	1%	6005.63
Add Contengency @		17913.80	3%	18069.63
Total Amount including Labour Welfare cess and contengency		621011.72		624589.76
Say Rs.		621012.00		624595.00

Rupees Six lakh Twenty six thousand Four hundred & Fourteen only

~~(Rupees Six lakh Twenty four thousand Five hundred Eighty five only)~~

(Rupees Six lakh Twenty one thousand & Twelve only)

P. Dey 01/08/2025

Sub-Assistant Engineer
Jaynagar-Majilpur Municipality
South 24 Parganas

debnath
11/9/25

Junior Engineer (Civil)
South 24 Parganas Division
Municipal Engineering Directorate
Govt. of W.B.

[Signature]
21/10/25

Assistant Engineer
South 24 Parganas Division
Municipal Engineering Directorate
Govt. of W.B.

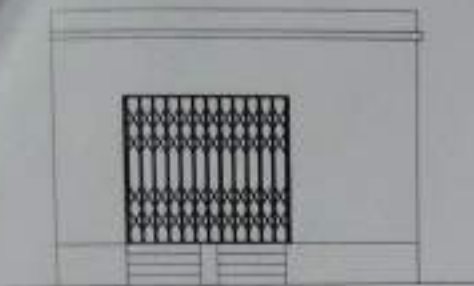
Vetted for
Rs. **624595.00**

Jaynagar Majilpur
Municipality

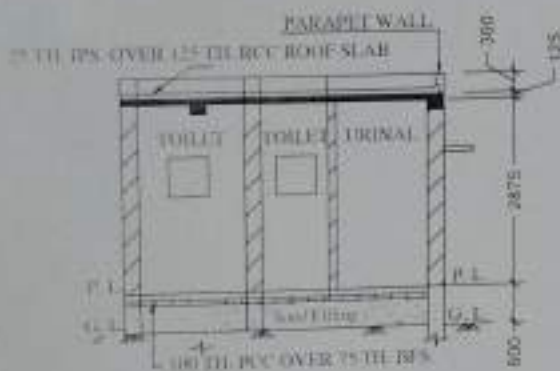
[Signature]
Chairman
01/08/25

[Signature]
Executive Engineer
South 24 Parganas Division
Municipal Engineering Directorate
Govt. of W.B.

MODEL DRAWING FOR CONSTRUCTION OF C. T./P.T.
TOILET SEATS 2 NOS URINAL 3 NOS
MODEL NO. - F



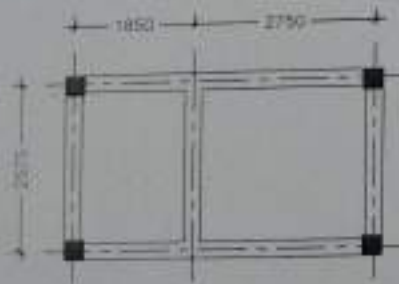
FRONT ELEVATION



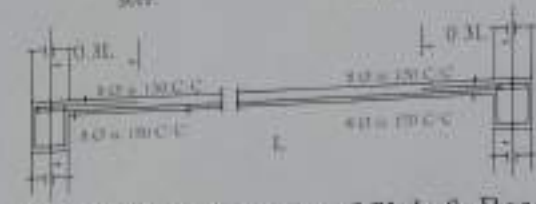
SECTION - 'A - A'



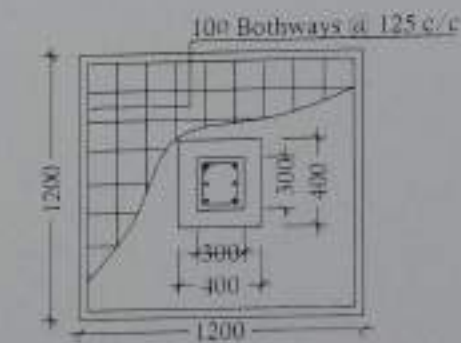
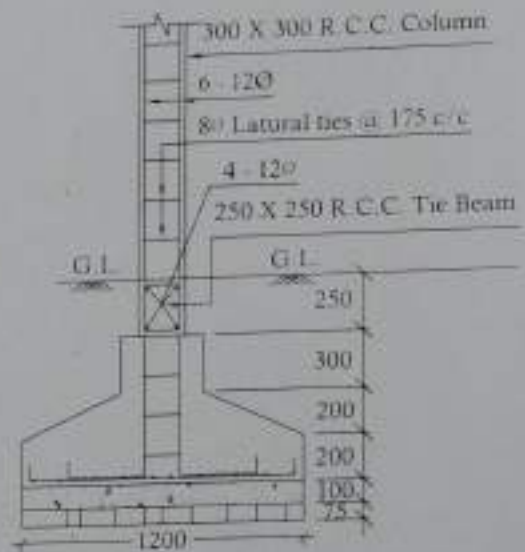
PLAN



TIE BEAM & FLOOR BEAM
LAYOUT PLAN



Details Of R.C.C Roof Slab & Beam
(SCALE - 1/25)



DETAILS OF R. C. C COLUMN
(SCALE - 1/25)

P. Dey 01/08/2025

Sub-Assistant Engineer
Jaynagar-Majilpur Municipality,
South 24 Parganas

Signature
Chairman
Jaynagar Majilpur
Municipality