

A: Civil Part

(02)

Estimate for the proposed construction of Public Toilet at Tilipara Bazar, ward no - 07, R.S. Plot no. 593, mouza - Bangshidharpur, J.L. No 208, under the Jaynagar Majilpur Municipality (Civil Part)

Schedule Based on SCHEDULE OF RATES [Incorporation of GST Act, 2017 & All addenda & Corrigenda of SOR, 01.12.2015] BUILDING WORKS [With effect from 01.11.2017]

Sl. No.	Description of Work	Quantity	Unit	Rate	Amount
1. P - 26, It - 10-i)	Ordinary Cement concrete (mix 1:1.5:3) with graded stone chips (20 mm nominal size) excluding shuttering and reinforcement if any, as per relevant IS codes. (i) Pakur Variety				
	a) In foundation & ground floor.	0.528	cu.m	6040.55	3189.41
2. P - 44, It - 40-a)ii)	Reinforcement for reinforced concrete work in all sorts of structures including distribution bars, stirrups, binders etc initial straightening and removal of loose rust (if necessary), cutting to requisite length, hooking and bending to correct shape, placing in proper position and binding with 16 gauge black annealed wire at every intersection, complete as per drawing and direction				
	a) For works in foundation and upto roof of ground floor/upto 4 m Tor steel / Mild steel, I JSW/JSPL/SHYAM/SRMB/ SSL				
	A In foundation & ground floor (1.25% of Concrete volume)	0.052	MT	54841.43	2851.75
3. P - 42, It - 35	Hire and labour charges for shuttering with centering and necessary staging upto 4 m using approved stout props and thick hard wood planks of approved thickness with required bracing for concrete slabs, beams and columns, lintels curved or straight including fitting, fixing and striking out after completion of works (upto roof of ground floor)				
	i) (a) 25 mm to 30 mm thick wooden shuttering as per decision & direction of Engineer-In-Charge.				
	a) Upto Roof of Ground floor.	7.504	sq.m.	335.00	2513.84
5. P - 15, It - 7 4. P - 15, It - 15	<b>125 mm. thick brick work with 1st class bricks in cement mortar (4 : 1)</b>				
	b) Ground Floor	12.375	sq.m	728.47	9014.82
	Brick work with 1st class bricks in cement mortar (1:5) (b) In superstructure	10.992	Cum	5836.35	64153.27

6. P - 40, It - 29		Supplying fitting approved type ventilator in position after cutting holes in walls setting in cement mortar mending damages to wall and plaster and two coats of paint of approved brand of any shade. Payment of mending good damages of wall & plaster and painting to be made separately.				
	b)	R.C.C ventilator of 20 mm. thick (i) Upto 0.10 sq.m. area				
	A	In ground floor	3.000	each	<del>108.00</del>	<del>324.00</del>
7. P - 40, It - 30		Supplying, fitting and fixing Fan Hook for ceiling with 1 metre long 16mm. dia rod complete including mending damages. Payment for damage and repair to be made separately.				
	A	In ground floor	1.000	each	<del>100.00</del>	<del>100.00</del>
8. P - 192, It - 1		Labour for Chipping of concrete surface before taking up Plastering work.				
	A	In ground floor	33.557	sqm	<del>21.00</del>	<del>704.70</del>
9. P - 189, It - 1		Plaster (to wall, floor, ceiling etc.) with sand and cement mortar including rounding off or chamfering corners as directed and raking out joints including throating, nosing and drip course. scaffolding/ staging where necessary (Ground floor) [Excluding cost of chipping over concrete surface]				
	A	<b>In ground floor</b>				
	i)	With 1:6 cement mortar				
	a)	20 mm thick plaster	24.880	sq.m	<del>171.71</del>	<del>4272.14</del>
	i)	With 1:6 cement mortar				
	c)	15 mm thick plaster	64.500	sq.m	<del>148.53</del>	<del>9580.19</del>
ii)	With 1:4 cement mortar					
c)	10 mm thick plaster	11.993	sq.m	<del>130.53</del>	<del>1565.45</del>	
10. P - 192, It - 15		Neat cement punning about 1.5mm thick in wall, dado, window sill, floor etc. NOTE: Cement 0.152 cu.m per 100 sq.m.				
	a)	In ground floor	12.900	sq.m	<del>32.75</del>	<del>422.48</del>

11. P - 66, It - 36

Supplying and laying true to line and level vitrified tiles of approved brand (size not less than 600 mm X 600 mm X 10 mm thick) in floor, skirting etc. set in 20 mm sand cement mortar (1:4) and 2 mm thick cement slurry back side of tiles using cement @ 2.91Kg./sqM or using polymerised adhesive (6 mm thick layer applied directly over finished artificial stone floor/Mosaic etc without any backing course) laid after application slurry using 1.75 Kg of cement per sqM below mortar only, joints grouted with admixture of white cement and colouring pigment to match with colour of tiles / epoxy grout materials of approved make as directed and removal of wax coating of top surface of tiles with warm water and polishing the tiles using soft and dry cloth upto mirror finish complete including the cost of materials, labour and all other incidental charges complete true to the manufacturer's specification and direction of Engineer-in-Charge. (White cement, synthetic adhesive and grout material to be supplied by the contractor)

i) With application slurry @1.75 kg/ Sq m, 20 mm sand cement mortar (1:4) & 2 mm thick cement slurry at back side of tiles, 0.2 kg/ Sq.m white cement for joint filling with pigment  
(A) Deep Colour & White

a) In ground floor

16.660

sq.m.

1704.00

28388.64

12. P - 74, It - 46

Supplying & laying 20 mm designer chequered tiles of any shade and of approved quality as per IS: 1237-1980 laid in patterns as directed in pavement footpath including necessary underlay 25 mm thick average cement mortar (1:3) complete in all respect with all labour and materials [using cement slurry @ 4.4 kg/Sq.m for joint fitting red variety]  
i) 25 mm thk

Ground Floor

2.021

Sq.m.

480.60

970.08

468.67

947.18

13.(I NO. -35(a), P. NO. - 64)

Supplying, fitting & fixing 1st quality Ceramic tiles in walls and floors to match with the existing work & 4 nos. of key stones (10mm) fixed with araldite at the back of each tile & finishing the joints with white cement mixed with colouring oxide if required to match the colour of tiles including roughening of concrete surface, if necessary or by synthetic adhesive & grout materials etc

B Wall  
With Sand Cement Mortar (1:3) 15 mm thick & 2 mm thick cement slurry at back side of tiles using cement @ 2.91 Kg/Sq m & joint filling using white cement slurry @ 0.20kg/Sq m.  
(a) Area of each tile upto 0.09 Sq m  
i) Coloured decorative

47.000

Sq.m.

757.00

35579.00

14. (i) NO -13, P. NO. -104	(a) M.S. or W.I. Ornamental grill of approved design joints continuously welded with M.S. W.I. Flats and bars of windows, railing etc. fitted and fixed with necessary screws and lugs in ground floor. (ii) Grill weighing above 16 Kg./sq.mtr and above				
	Ground Floor	1.045	Qntl	9696.00	10132.32
15. P - 107, It - 20-b)	Supplying, fitting and fixing windows and ventilators with or without integrated grills conforming to IS 1038-1975 and manufactured from rolled steel sections conforming to IS 7452-1974 with non-friction projecting type, box type hinges, glazing clips, lugs locking bracket, handle plate etc. including hoisting in position, straightening if required, fixing lugs in cement concrete (1:2:4) with stone chips 20 mm down cutting holes and mending good damages to match with existing surface complete in all respect excluding glazing (b) Operable steel windows as per IS sizes with side hung shutters and horizontal glazing bars. [The extra rate admissible for the operable portion only]				
A	Ground Floor	1.800	Sqm	2199.00	3958.20
16. P - 205, It - 1	Supplying best Indian sheet glass panes set in putty and fitted and fixed with nails and putty complete. (In all floors for internal wall & upto 6 m height for external wall) (i) 3 mm thick (weighing 7.4 kg/Sq m)	1.800	Sqm.	477.00	858.60
17. P - 106, It - 18	Collapsible gate with 40mm x 40mm x 6mm Tee as top and bottom guide rail, 20mm x 10mm x 2mm vertical channels 100mm apart in fully stretched position 20mm x 5mm M.S. flats as collapsible bracings properly rivetted and washered including 38mm steel rollers including locking arrangements, fitted and fixed in position with lugs set in cement concrete and including cutting necessary holes, chasing etc. in walls, floors etc. and making good damages complete				
	In ground floor	5.670	Sqm	4330.00	24551.10
18. P - 109, It - 22	Supplying, fitting and fixing Stainless Steel railing consist of 38mm dia and 900mm height vertical balustrade at every two alternative steps, 50mm dia top rail, 3 (three) nos 19mm dia horizontal Stainless steel pipe and base/cover plate with Stainless Steel GRADE 304 containing 7.5% nickle (Interior Grade) Brushed/Mat finish, complete as per direction of the Engineer-in-charge. Weight of Stainless Steel railing per metre 6.5 Kg (approx)				
A	Ground Floor	1.500	Mtr	9077.00	13615.50

19 P - 198, It - 5	Rendering the Surface of walls and ceiling with White Cement base WATER PROOF wall putty of approved make & brand.				
	(1.5 mm thick)				
	A Ground Floor	36.873	sq.m.	122.00	4498.51
20 P - 200, It - 1-b)	(b) Priming one coat on timber or plastered surface with synthetic oil bound primer of approved quality including smoothening surfaces by sand papering etc.				
	A Ground Floor	88.473	Sq.M	38.00	3361.97
21 P - 200, It - 1-a)	A(a) Priming one coat on steel or other metal surface with synthetic oil bound primer of approved quality including smoothening surfaces by sand papering etc.				
	A Ground Floor	10.305	Sq.M	29.00	298.86
22 P - 200, It - 2	(A) Painting with best quality synthetic enamel paint of approved make and brand including smoothening surface by sand papering etc. including using of approved putty etc. on the surface, if necessary :				
	a) On timber or plastered surface :				
	iv) Two coats (with any shade except white)				
	A Ground Floor	88.473	sq.m.	81.00	7166.31
23 P - 200, It - 2	(A) Painting with best quality synthetic enamel paint of approved make and brand including smoothening surface by sand papering etc. including using of approved putty etc. on the surface, if necessary :				
	b) On steel or other metal surface				
	iv) Two coats (with any shade except white)				
	A Ground Floor	10.305	sq.m.	79.00	814.10

24. Page no. 127, Item no 15

Supplying, Fitting & Fixing 30 mm thick Double Leaf Factory made solid Panel PVC Door Shutter consisting of outer frame made out of M.S. tubes of 19 gauge thickness and size 19 mmx19 mm for styles, top and bottom rails, M.S. frame shall have cost of steel primers of approved make and manufacture, M.S. frame covered with 5 mm th. heat moulded PVC "C" channel of size 30 mm th, 70 mm width out of which 50 mm shall be flat and 20 mm shall be tapered in 45 degree angle on either sides forming styles, and 5 mm th. 95 mm wide PVC sheet out of which 75 mm shall be flat and 20 mm tapered in 45 degree on the inner side to form top & bottom rail and 115 mm wide PVC sheet out of which 75mm shall be flat and 20 mm shall be tapered on both sides to form lock rail. Top, bottom and lock rails shall be provided either side of the panel with 10 mm (5 mmx2) th. 20 mm wide cross PVC sheet as gap insert for top rail and bottom rail. Paneling of 5 mm th. both side PVC sheet to be fitted in the M.S. frame welded/sealed to the styles & rails with 7 mm (5 mm+2 mm) th. x15 mm wide PVC sheet beading on inner side and joined together with solvent cement adhesive. An additional 5 mm th. PVC strip of 20 mm which is to be stuck on the interior side of the "C" channel using PVC solvent adhesive etc. complete excluding all necessary hardware as per direction of Engineer-in-Charge  
In ground floor

3.150

Sqm

~~2275.00~~~~7175.70~~

25. Page no. 117, Item no B

Supplying, Fitting & Fixing Factory made pre-laminated P.V.C. door frame of size 50 mmx47 mm with a wall thickness of 5 mm, made out of extruded 5 mm Pre-laminated PVC sheet miter cut at two corners and joined with two nos of 1.5 mm long brackets of 15 mm x15 mm M.S. square tube. The two vertical door profiles are to be reinforced with 19 mmx 19 mm M.S. Square tube of 19 gauge, weather seal to be provided through out the frame. The door frame shall be fixed with the wall using 85/100 mm M.S. Screws through the frame by using P.V.C fasteners. A minimum of 4 Nos of screws to be provided for each vertical member and minimum 2 Nos for horizontal member etc. complete as per Manufacturer's specification and direction of Engineer-in-Charge

9.900

Mtr

~~385.00~~~~3811.50~~

Construction of septic tank of different capacities as per approved drawing with 1st class brick work in cement mortar (1:4) including two 560 mm dia. R.C.C. manhole cover (heavy type) of approved make supplied, fitted and fixed in the 100mm thick R.C.C (1:1.5:3) top slab with necessary fittings, 20mm thick cement plaster (4 - 1) with neat cement finish to the internal surfaces and 15 mm thick cement plaster (4 - 1) to outside wall upto 200 mm below G.L floor finished with 25 mm thick grey artificial stone over 100 mm thick R.C.C (1:1.5:3) bottom slab including supplying, fitting and fixing all necessary specials, fittings, S.W. tees, C.I. foot rest etc. including excavation earth in all sorts of soil, shoring, bailing out and pumping out water as necessary, ramming, dressing the bed and refilling the sides of the tanks with earth, removing spoils, filling up the chamber with clear water, removing foreign materials from the chamber and including constructing attached inspection pit as per approved drawing and connecting all necessary pipes, joints etc. with internal plaster work and artificial stone flooring is to be done with admixture of water proofing compound @ 0.5% by weight of cement with all costs of labour and materials. Note - (i) Finished level of Septic Tank should be 400 mm. from Ground Level. (ii) Height of 50 mm. Ventilation pipe & Mosquito proof mesh, should be followed as per IS 2470.

iii) For 30 users  
A) With Pakur variety.  
(JSW/JSPL/SHYAM/SRMB/.../SSL)

1.000 Each 62821.00 ~~62821.00~~

Construction of circular soak well 2.5 metre deep in all types of sandy soils with dry brick work upto 1.6 metre from the bottom having 150 mm intermediate cement brick work (1:4) band all round and cement brick work (1:4) upto 0.90 metre from top with 20mm thick cement plastering (1:4) to inside face upto the depth of cement brick work, 15mm thick cement plaster (1:4) on outer face from top of the well upto G.L. and 6 mm thick cement plaster (1:4) on top of the R.C.C. cover slab including filling bottom 1.00 metre of inside of the well with brick metal (50 mm to 63 mm size) including R.C.C. cover slab of 100 mm thick with cement conc (1:1.5:3) with stone chips with necessary reinforcement and shuttering including one 560 mm dia. R.C.C. manhole cover (heavy type) of approved make supplied, fitted and fixed in the cover slab with necessary fittings, making necessary arrangements for pipe connections, excavation of well including shoring, dewatering and removing the excess earth from the premises as per direction complete in all respect with all costs of labour and materials  
With 250 mm thick dry brick work and 250 mm thick cement brick work (1:6) and 1.00m inside dia (JSW/JSPL/SHYAM/SRMB/.../SSL)

1.000 each 16621.00 ~~16621.00~~

28 Sanitary & Plumbing, P - 87, II - 1	<p>Constructing inspection pit of inside measurement 600mm X 600mm X upto 600mm (depth) with 250 mm thick 1st class brick work in cement mortar (1:4) on all sides, bottom of the pit consisting of 100 mm thick cement concrete (1:3:6) with stone chips over a layer of jhama brick flat soling, 15 mm thick (1:4) cement plaster to inside walls and out-side walls upto G.L. and 20 mm thick (1:4) plaster to bottom of the pit</p> <p>providing necessary invert with cement concrete (1:3:6) with stone chips as per direction, neat cement finishing to entire internal surfaces, top of the pit covered with 100 mm thick R.C.C. slab (1:1.5:3) with stone chips and necessary reinforcements upto 1% and shuttering including 6 mm thick cement plaster (1:4) in all external surfaces of the slab and one 560 mm dia. R.C.C. manhole cover of approved make</p> <p>supplied, fitted and fixed in the slab with necessary fittings, necessary earthwork in excavation in all sorts of soil, filling sides of the pit with earth and removing spoils after work complete in all respect with all costs of labour and materials. ((JSW/JSPL/SHYAM/SRMB/.../SSL)</p>	1.000	Each	7248.00	7248.00		
						3,30,562.43	
						(A) Total Cost (A) (Rs)	330539.61
						Add G.S.T @ 18% (Rs)	59497.11
						Sub Total (Rs)	390036.63
						Add Cess @ 1% (G=F*1%) (Rs)	3900.37
						Add Contingency @ 3% (H=F*3%) (Rs)	11701.10
						Gross Total Cost (F+G+H) (Rs)	405638.09
						say (Rs)	405638.00
Rupees Four lakhs Five thousand Six hundred & Thirty eight only							

P. Dey 11/08/2025

Sub-Assistant Engineer  
Jaynagar-Majilpur Municipality  
South 24 Parganas

*Heeldu*  
Chairman 11/8/25  
Jaynagar Majilpur  
Municipality

*B: Sanitary Part*

CONSTRUCTION OF TOILET BLOCK ( CT/PT) AT TILIPARA BAZAR, NETAJI SUBHAS ROAD, WARD 07, R.S. PLOT NO - 593,  
 MOUZA - BANGSHIDHARPUR, J.L. NO 208, WITHIN THE JAYNAGAR MAJILPUR MUNICIPALITY  
 SANITARY & PLUMBING ITEMS  
 TOILET SEATS - 2 NOS AND URINAL - 2 NOS

Sl. No.	Reference	Description	Quantity	Rate	Unit	Amount
<b>Sanitary &amp; Plumbing Items</b>						
1	(P. No. - 79, Item No. - 1, Pwd Sanitary Plumbing Schedule 2017)	Supplying, fitting and fixing Shallow water closet Indian pattern (I.P.W.C.) of approved make in white vitreous chinaware in position (excluding cost of concrete for fixing). (i) 580 mm long	2.00	973.00	Each	1946.00
2	(P. No. - 41, Item No. - 2, Pwd Sanitary Plumbing Schedule 2017)	Supplying, fitting and fixing white vitreous china best quality approved make wash basin with C.I. brackets on 75 mm X 75 mm wooden blocks, C.P. waste fittings of 32 mm dia., one approved quality brass C.P. pillar cock of 15 mm dia., C.P. chain with rubber plug of 30 mm dia., approved quality P.V.C. waste pipe with C.P. nut 32 mm dia., 900 mm long approved quality P.V.C. connection pipe with heavy brass C.P. nut including mending good all damages and painting the brackets with two coats of approved paint. (450 mm x 300 mm size)	2.00	1979.00	Each	3958.00
3	(P. No. - 80, Item No. - 7, Pwd Sanitary Plumbing Schedule 2017)	Supplying, fitting and fixing Squating plate with integral flushing in white vitreous chinaware of approved make in cement concrete (6:3:1) with jhama chips complete. (Payment of concrete will be paid seperately). (i) 450 mm X 350 mm	1.00	881	Each	881.00
4	(P. No. - 80, Item No. - 6 (ii), Pwd Sanitary Plumbing Schedule 2017)	Supplying, fitting and fixing Flat back urinal (half stall urinal) in white vitreous chinaware of approved make in position with brass screws on 75mm X 75 mm X 75 mm wooden blocks complete. (ii) 470 mm X 280 mm X 340 mm	1.00	945.00	Each	945.00
5	(P. No. - 36, Item No. - 2, Pwd Sanitary Plumbing Schedule 2017)	Supplying, fitting and fixing 10 litre P.V.C. low-down cistern conforming to I.S. specification with P.V.C. fittings complete, C.I. brackets including two coats of painting to bracket etc.	2.00	1015.00	Each	2030.00
6	Page no 81, Item no. 11(i)	Supplying, fitting and fixing 32 mm dia. Flush Pipe of approved make with necessary fixing materials and clamps complete. i) Polythene Flush Pipe	2.00	155.00	each	310.00

Reference	Description	Qunatity	Rate	Unit	Amount
7 (P. No. - 37, Item. No. - 6, Pwd Sanitary Plumbing Schedule 2017)	Supplying P.V.C. water storage tank of approved quality with closed top with lid (Black) - Multilayer (a) 1000 litre capacity	1.00	5128.00	each	5128.00
8 (P. No. - 38, Item. No. - 13, Pwd Sanitary Plumbing Schedule 2017)	Labour for punching hole in plastic water storage tank upto 50 mm dia.	2.00	19.00	Each	38.00
9 (P. No. - 38, item No. - 13, Pwd Sanitary Plumbing Schedule 2017)	Supplying, fitting and fixing CPVC (Chlorinated Polyvinyl Chloride) pipes of approved make conforming to IS-15778: 2007 . with all necessary accessories, specials viz. socket, bend, tee, union, cross, elbo, nipple, long screw, reducing socket, reducing tee, short piece etc. fitted with holder bats clamps, including cutting pipes, fitting, fixing etc. complete in all respect including cost of all necessary fittings as required, jointing materials in any position above ground. (Payment will be made on the centre line measurements of total pipe line including all specials. No separate payment will be made for accesories, specials. (a) For Exposed Work (i) CPVC Pipes Class-1, SDR-11 (Dia) 15 mm	10.00	106.00	meter	1060.00
10 (P. No. - 37, Item. No. - 10, Pwd Sanitary Plumbing Schedule 2017)	Labour for hoisting plastic water storage tank i) upto 1500 litre capacity a) upto 1st storey from G.L.	1.00	96.00	each	96.00

Reference	Description	Quantity	Rate	Unit	Amount
11 (P. No. - 38, Item. No. - 13, Pwd Sanitary Plumbing Schedule 2017)	Supplying, fitting and fixing CPVC (Chlorinated Polyvinyl Chloride) pipes of approved make conforming to IS-15778: 2007 with all necessary accessories, specials viz. socket, bend, tee, union, cross, elbo, nipple, long screw, reducing socket, reducing tee, short piece etc. fitted with holder bats clamps, including cutting pipes, fitting, fixing etc. complete in all respect including cost of all necessary fittings as required, jointing materials in any position above ground. (Payment will be made on the centre line measurements of total pipe line including all specials. No separate payment will be made for accessories, specials. (b) For Concealed Work (i) CPVC Pipes Class-1, SDR-11 20 mm	10.00	171.00	meter	1710.00
12 (P. No. - 43, Item. No. - 9, Pwd Sanitary Plumbing Schedule 2017)	Supplying, fitting and fixing approved brand P.V.C. CONNECTOR white flexible, with both ends coupling with heavy brass C.P. nut, 15 mm dia. (v) 900 mm long	2.00	147.00	Each	294.00
13 (P. No. - 43, Item. No. - 10, Pwd Sanitary Plumbing Schedule 2017)	Supplying, fitting and fixing approved brand 32 mm dia. P.V.C. waste pipe, with PVC coupling at one end fitted with necessary clamps. (iv) 1050 mm long	2.00	91.00	Each	182.00
14 (P. No. - 68, Item. No. - 23(a), Pwd Sanitary Plumbing Schedule 2017)	Supply of UPVC pipes (B Type) & fittings conforming to IS-13592-1992, (A) (i) Single Socketed 3 Meter Length				
	(a) 75 mm	7.00	196.00	Metre	1372.00
	(b) 110 mm	12.00	292.00	Metre	3504.00
	(B) Fittings				
	(i) Coupler, (b) 110 mm	2.00	85.00	Each	170.00
	(ii) Plain Tee, (b) 110 mm	2.00	85.00	Each	170.00
	(iii) Door Tee, (b) 110 mm	2.00	195.00	Each	390.00
	(ix) Bend 45°, (b) 110 mm	2.00	89.00	Each	178.00
	(xi) Door Bend (T.S.), (b) 110 mm	2.00	147.00	Each	294.00

Reference	Description	Quantity	Rate	Unit	Amount	
	xv) Vent Cowl, (b) 110 mm	2.00	33.00	Each	66.00	
	xvi) Pipe Clip, (b) 110 mm	6.00	21.00	Each	126.00	
	xvii) W.C. Connector (150 mm long) 125 X 110(W/WC Ring)	2.00	142.00	Each	284.00	
	xx) 125/110 P Trap with W.C. Ring, 75 mm	2.00	340.00	Each	680.00	
	xxvii) Reducing Tee (110 X 75 mm) 75 mm	2.00	142.00	Each	284.00	
	xxvi) Reducer 110 X 75 mm 75 mm	2.00	80.00	Each	160.00	
	xxxij) Plain Floor Trap with Top tile & Strainer 75 mm	2.00	144.00	Each	288.00	
	L) Rubber Ring, (b) 110 mm	8.00	17.00	Each	136.00	
	C) Rubber Lubricant 500 ML	1.00	187.00	500 ML	187.00	
	D) Solvent Cement 250 ML	1.00	103.00	250 ML	103.00	
15	(P. No. - 74, Item, No. - 24, Pwd Sanitary Plumbing Schedule 2017)	Labour for fitting and fixing U.P.V.C. pipes for above ground work including cost of jointing materials etc. fitting and fixing all necessary specials, cutting pipes, cutting holes in walls or R.C. floor where necessary and mending good all damages excluding the cost of masonry or concrete work, if necessary, but including the cost and fitting and fixing holder bat clamps (any floor) or for underground work including cutting trenches upto 1.5 metre and refilling the same complete as per direction of the Engineer in-charge. (Payment will be made on centre line measurement of the total pipeline including specials				
	(A) Above ground, (ii) 75 mm dia.	7.00	45.00	Metre	315.00	
	(B) Under ground, (ii) 110 mm dia.	12.00	84.00	Metre	1008.00	
16	(P. No. - 6, Item, No. - 7(b), Pwd Sanitary Plumbing Schedule 2017)	Supplying, fitting and fixing bib cock or stop cock. (b) (i) Chromium plated Stop Cock (Equivalent to Code No. 513(A) & 513(B) & Model - Tropical / Sumthing Special of ESSCO or similar	6.00	493.00	Each	2958.00
17	(P. No. - 6, Item, No. - 7(d), Pwd Sanitary Plumbing Schedule 2017)	Supplying, fitting and fixing bib cock or stop cock (d) (i) Chromium plated bib Cock short body (Equivalent to Code No. 511 & Model - Florentine of Jaquar or similar brand) Tropical/ sumthing special ..... similar brand.	4.00	539.00	Each	2156.00

No	Reference	Description	Quantity	Rate	Unit	Amount
18	(P. No. - 45, Item No. 15(a); Pwd Sanitary Plumbing Schedule 2017)	Supplying, fitting and fixing pillar cock of approved make. a) (i) CP Pillar Cock - 15 mm. (Equivalent to Code No. 507 & Model - Tropical / Sumthing Special of ESSCO or similar brand).	2.00	555.00	Each	1110.00
19	(P. No. - 82, Item No. - 19, Pwd Sanitary Plumbing Schedule 2017)	Supplying, fitting and fixing best quality Indian make mirror 5.5 mm thick with silvering as per I.S.I. specifications supported on fibre glass frame of any colour, frame size 550 mm X 400 mm.	2.00	613.00	Each	1226.00
20	(P. No. - 82, Item No. - 17 (a), Pwd Sanitary Plumbing Schedule 2017)	Supplying, fitting and fixing liquid soap container. (a) Cromium plated.	4.00	393.00	Each	1572.00
(A) Civil Part = Rs. 9,90,562.43						(B) Total Amount :- 37315.00
(B) Sanitary & Plumbing = Rs. 37,315.00						GST 18.00 % 6716.70
Total = Rs. 3,67,877.43						Total Amount :- 44031.70
Add or ST @ 18% = Rs. 66,217.94						Add Labour Cess 1% 440.32
Total = Rs. 4,34,095.37						Add Contingency 3% 1320.95
Add Cess @ 2% = Rs. 4340.95						Total 45792.97
Contingency @ 2% = Rs. 13,022.86						Say Rs. 45793.00
Total = Rs. 4,51,459.18						Forty five thousand Seven hundred Ninety three only

Say = Rs. 4,51,459.00

P. Dey 11/08/2025

Sub-Assistant Engineer  
Jaynagar-Majilpur Municipality,  
South 24 Parganas

*Pradip*  
Chairman 11/8/25  
Jaynagar Majilpur  
Municipality

MAY BE VETTED

VETTED

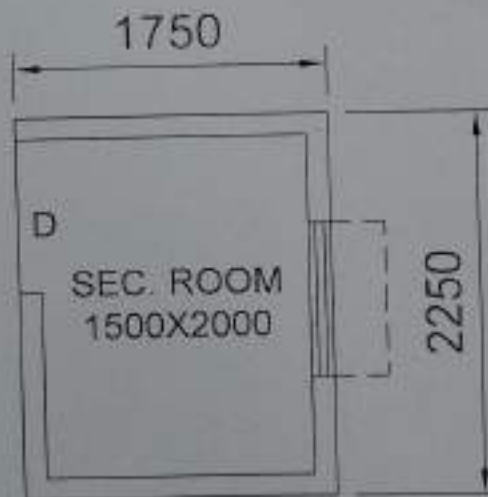
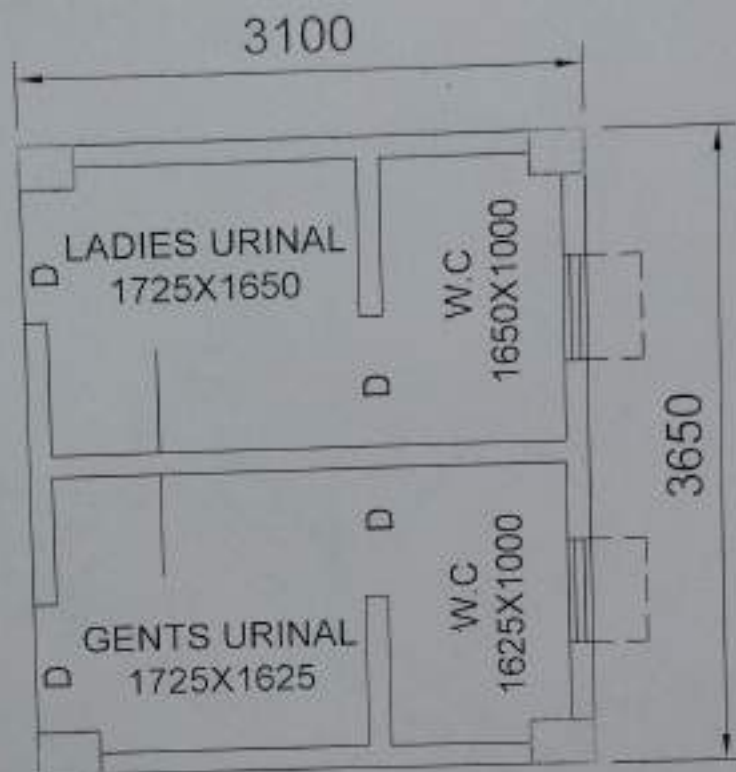
~~Rs. 4,51,459.00~~

*P. Dey*  
31/10/25  
Junior Engineer (Civil)  
South 24 Parganas Division  
Municipal Engineering Directorate  
Govt. of West Bengal

*Pradip*  
31/10/25  
Assistant Engineer (Civil)  
South 24 Parganas Division  
Municipal Engineering Directorate  
Govt. of West Bengal

*S. K. Das*  
31/10/25  
Executive Engineer  
South 24 Parganas Division  
Municipal Engineering Directorate  
Govt. of W. B.

PROPOSED CONSTRUCTION OF PUBLIC TOILET AT TILIPARA BAZAR (WITH EXISTING ROOF), NETAJI SUBHAS ROAD, WARD NO - 07, R.S. PLOT NO - 593, MOUZA - BANGSHIDHARPUR, J.L. NO - 208, UNDER THE JAYNAGAR MAJILPUR MUNICIPALITY



P. King 11/08/2025

Sub-Assistant Engineer  
Jaynagar-Majilpur Municipality  
South 24 Parganas

*Stalin*  
Chairman  
Jaynagar Majilpur  
Municipality  
11/8/25

GROUND FLOOR PLAN