

## KAMARHATI MUNICIPALITY

**Name of Work :- Construction of Community Toilet at MADHYA PALLY , under Ward no. 29**

No. Of seat - Male - ( W.C. -2 + Urinal -2) & Female - (W.C. -2 + Urinal -1) = Total ( W.C. -4 & Urinal -3)

**Estimate prepared as per PWD (Building & Sanitary & Plumbing Schedule 17-18 w.ef. 01/11/2017**

Sl.No	Description of Items	Quantity	Unit	Rate	Amount		
<b>1</b>	<b>Earth work in excavation of foundation trenches or drains</b> , in all sorts of soil ( including mixed soil but excluding laterite or sand stone) including of 75 m.as directed. The item includes necessary trimming the sides of trenches, levelling, dressing and ramming the bottom ,bailing out water etc. as required complete. (a) Depth of excavation not exceeding 1,500 mm. (Page No.1, Item No.2a)						
	Col. Base	6	1.2	0.4	1.125	3.24	
	U.G.R.	1	2.375	0.75	0.75	1.34	
	Ramp	2	1.50	1.30	0.20	0.78	
			5.36	% cu.m.	11,927.00	639.29	
<b>2</b>	<b>Single brick flat soling of picked jhama bricks</b> including ramming and dressing bed to proper level, and filling joints with powdered earth or local sand. (P-14, I.no.-1)						
	Col. Base	6	1.2	1.20	8.64		
	G & L	1	1.944	2.00	3.89		
		1	1.944	2.53	4.91		
	U.G.R.	1	2.375	0.75	1.78		
	Ramp	2	1.5	1.3	3.90		
		2	1.5	0.8	2.40		
		25.52	Sqm	361.00	9,213.17		
<b>3</b>	<b>(A) Filling in foundation or plinth</b> by silver sand in layers not exceeding 150 mm as directed and consolidating the same by thorough saturation with water, ramming complete including the cost of supply of sand. (payment to be made on measurement of finished quantity) PWD Building Works schedule, Page - 2, Item -4.a						
	U.G.R.	1	2.375	0.75	0.10	0.18	
	G & L toilet	1	1.944	2.00	0.15	0.58	
		1	1.944	2.53	0.15	0.74	
	Ramp	2	1.50	0.80	0.35	0.84	
		2.34	% M <sup>3</sup>	93,621.00	2,190.73		
<b>4</b>	<b>25mm. thick damp proof course</b> with cement concrete with stone chips (1:1.5:3) [with graded stone aggregate 10 mm nominal size] and admixture of water proofing compound as per manufacturer's specification followed by two coat of polymer based paint, (1st coat after 4 to 5 days of concrete laying and 2 nd coat just before brick masonry work) as directed (cost of water proofing compound & polymer based paint to be paid separately). (Chequering not required over concrete or painted surface). [Note:- Waterproofing as per item 9, polymer based paint as per item 8 (a) of subhead C of Section (C). PWD Building Works schedule, Page -47, Item -1 (Rate Analysis)]						
		1	5.275	x	0.25	1.32	
		1	5.275	x	0.125	0.66	
		2	2.45	x	0.25	1.23	
		6	0.25	x	0.25	0.38	
	Less					2.83	
					sq.m.	265.95	752.64

Sl.No	Description of Items						Quantity	Unit	Rate	Amount	
5	<b>Brick work with 1st class bricks in cement mortar(4:1)</b>										
	(a) In foundation and plinth.										
	G & L toilet	1	12.95	x	0.25	x	0.3	0.97			
	Ramp	2*2*1/2	1.30	x	0.75	x	0.25	0.49			
	2*2	0.75	x	0.25	x	0.25	0.05				
							1.51	cu.m	5,613.36	8,465.65	
(b)	<b>In Super Structure</b>										
	(page No-30,item No- 21(a)(b)										
	G & L toilet	1	7.675	x	0.25	x	2.75	5.28			
Less	6	0.45	x	0.45	x	0.25	0.30				
							4.98	cu.m	5,836.36	29,043.19	
6	<b>125 mm.thick brick work with 1st class bricks in cement mortar ( 4:1 )in ground floor.</b>										
	(page No-32, item No-29.)										
	P/wall	3	2.075	x	2.90			18.05			
		2	1.20		2.90			6.96			
		1	5.025		2.75			13.82			
	Parapet	1	15.85	x	0.75			11.89			
	U.G.R.	1	5.75	x	0.5			2.88			
	Less	2*2	0.75	x	1.8			5.40			
		2	1.0		1.8			7.20			
		2	0.45		0.45			0.41			
							66.60	sq.m.	728.47	48,515.19	
7	Plaster (to wall, floor, ceiling etc.) with sand and cement mortar including rounding off or chamfering corners as directed and raking out joints including throating, nosing and drip course, scaffolding/staging where necessary (Ground floor).[Excluding cost of chipping over concrete surface] (ii) With 1:4 cement mortar										
	<b>(a) 15mm th.plaster</b>										
	Inside	3	2.075		2.90			18.05			
		2	1.2		2.90			6.96			
		1	5.025		2.75			13.82			
	Parapet	1	15.85	x	1.625			25.76			
	UGR	1	5.10	x	0.90			4.59			
	Less	1/3*6	0.45	x	0.45			0.41			
		1/3*4	0.75	x	1.8			1.85			
		2*1/3	1.30	x	1.8			1.56			
	Outside	1	15.45	x	3.70			57.17			
		1	2.38		1.00			2.38			
		1	2.38	x	0.75			1.78			
	Less	1/3*4	0.45	x	0.45			0.27			
		1/3*2	0.9	x	1.8			1.08			
								135.66	sqm	148.53	20,149.77
	(iii) With 1:3 cement mortar										
	<b>(c) 10 mm thick plaster</b>										
	ceiling	1	5.025	x	2.075			10.43			
	UGR	1	2.075	x	0.5			1.04			
								11.47	sqm	130.53	1,497.18
	(Page no -164, item no-2/ii/c)										
	8	<b>Neat cement punning about 15 mm thick</b>									
in wall dado, window, sills etc.											
(P-192, I.no.-15)											
Out side		1	10.175	x	0.70			7.12			
Tank side		1	5.15	x	0.90			4.64			
	1	2.075	x	0.50			1.04				
	1	2.375	x	0.75			1.78				
							14.57	Sqm	34.00	495.51	

Sl.No	Description of Items						Quantity	Unit	Rate	Amount
9	<b>Hire and labour charges for shuttering with</b> centreing and necessary staging upto 4m.using approved beams,columns,lintels curved or   straight including fitting,fixing and striking out after completion of works.   ( upto roof of ground floor).									
(a)	<b>25mm to 30mm thick wooden shuttering as per</b> decision & direction of Engineer-in-charge. (P-43, I.no.-36)									
col.	6*4	1.2	x	0.15			4.32			
	6	(1.20+0.375)/2		0.225			1.06			
	6	1.2	x	0.375			2.70			
	6	1.0	x	3.30			19.80			
F/B	3*2	2.45	x	0.25			3.68			
	1	2.45	x	0.25			0.61			
	2*2	4.775	x	0.25			4.78			
							36.95	sqm	209.00	7,721.64
(a)	<b>25mm to 30mm thick wooden shuttering as per</b> decision & direction of Engineer-in-charge.									
R/B	2*2	5.275	x	0.15			3.17			
	3*2	1.95	x	0.15			1.76			
Lintel	2*2	5.275	x	0.15			3.17			
	3*2	1.95	x	0.15			1.76			
	2	2.075	x	0.15			0.62			
	2	2.025	x	0.15			0.61			
chajja	2*6	0.45	x	0.525			2.84			
	2	1.30	x	0.525			1.37			
slab	2	5.275	x	1.95			20.57			
							35.84	sqm	335.00	12,007.24
10	<b>Reinforcement for reinforced concrete work in</b> all sorts of structure including distribution bars, stirrups,black annealed wire at every inter- section,complete as per drawing and direction.									
(a)	<b>For works in foundation,basement and upto roof of</b> ground floor/upto 4 m. (I) Tor steel/Mild steel. JSPL/SWAYN/ELETRO/STEEL (P-43, I.no.-40 a.i.1) 7.67*1.35%*7.85						0.81	M.T.	55,194.51	44,707.55
11	<b>Ordinary Cement concrete (mix 1:1.5:3) with</b> graded stone chips (20 mm nominal size) excluding shuttering and reinforcement if any, in ground floor as per relevant IS codes.									
	<b>a) Pakur Variety</b> (Page No.26, Item no.10)									
col.	6	1.05	x	1.05	x	0.15	0.99			
	6	(1.20*1.20+0.375*0.375)/2		0.225		0.225	1.07			
	6	0.375	x	0.375	x	0.525	0.44			
	6	0.25	x	0.25	x	3.30	1.24			
F/B	3	1.95	x	0.25	x	0.25	0.37			
	2	5.275	x	0.25	x	0.25	0.66			
R/B	3	1.95	x	0.25	x	0.15	0.22			
	2	5.25	x	0.25	x	0.15	0.39			
R/SLAB	1	5.875	x	3.05	x	0.10	1.79			
LINTEL	2	5.275	x	0.25	x	0.15	0.40			
	1	1.95	x	0.125	x	0.15	0.04			
	1	2.05	x	0.125	x	0.15	0.04			
	1	2.075	x	0.125	x	0.15	0.04			
chajja	2*6	0.45	x	0.75	x	0.075	0.35			
	2	1.35	x	0.75	x	0.075	0.15			
							8.19	M <sup>3</sup>	5,863.13	48,019.03

Sl.No	Description of Items	Quantity	Unit	Rate	Amount			
12	Artificial stone in floor, dado, staircase etc with cement concrete (1:2:4) with stone chips, laid in panels as directed with topping made with ordinary or white cement (as necessary) and marble dust in proportion (1:2) including smooth finishing and rounding off corners including raking out joints or roughening of concrete surface and application of cement slurry before flooring..... 25 mm. thick For roofing PWD Building Works schedule, P-48, It-6.ii (Rate Analysis)							
		1	1.00	x	1.20	1.20		
		1	1.20	x	1.20	1.44		
		1	1.0	x	2.075	2.08		
		1	1.2	x	2.075	2.49		
		1	1.0	x	0.885	0.89		
		1	1.20	x	0.885	1.06		
		1	1.038	x	1.23	1.27		
		10.42	M <sup>2</sup>	269.00	2,803.93			
13	<b>M.S.or W.I Ornamental Grill of approved design</b> joints continuously welled with M.S. W.I. flats & bars of windows railing etc. fitted & fixed with necessary screws & lugs in Ground Floor. (i) Grill weighing above 10 Kg./sq.mtr and up to 16 Kg./sq.mtr. PWD Building Works schedule, P-104 Item-13 A (i) (3rd Corrigendam Page No 91)							
		2	1.3	x	1.8	x	16.0	74.88
		6	0.45	x	0.45	x	12.0	14.58
		0.895	Qntl	9,888.00	8,849.76			
14	Supplying profiles of required section made of Aluminium Alloy Extrusions conforming to IS: 732-1983 and IS: 1285- 1975; Anodized (with required film thickness and specified colour / natural) matt finished conforming to IS: 1868-1983 for fabrication of composit door, sliding & casement windows, partitions, formed of basic sections of any ISI embossed / certified make and brand as per direction of Engineer - In- Charge. (Payment will be made on finished length of the work). (A) In 10-12 Micron thickness Anodizing film l) Natural white h) Louvered window. i) Top, bottom and side member. PWD Building Works schedule, PWD, P-233, I- 1(h) i 6 2.1 ii) Louvered Section. 12.00 0.60 iii) Cleat angle ( Non-anodized). 12.00 0.54							
		12.60	M	183.00	2,305.80			
		7.20	M	658.00	4,737.60			
		6.48	M	263.00	1,704.24			
15	Supplying, fitting and fixing fibre reinforced polymer (FRP) Composite door frame as per approved section with glass fibre reinforced plastic moulded skins and a special sandwich core, so as to impart monolitaheic composite structure as per approved technology of Department of Science and Technology (DST) to safisfy IS: 4020 door testing performance criteria.. (i) 66mm x 90mm PWD Building Works schedule, P-115, It- 3 (i)	17.40	Sqm	497.00	8,647.80			
		4		4.35				

Sl.No	Description of Items	Quantity	Unit	Rate	Amount
16	Supplying, fitting & fixing fibre reinforced polymer (FRP) Composite door shutters as per approved design with glass fibre reinforced plastic moulded skins and a special sandwich core, so as to impart monolitaheic composite structure as per approved technology of Department of Science and Technology (DST) to satisfy IS:4020 door testing performance criteria. In ground floor. ii) 25 mm thick P-125, It- 14(ii)  4      0.75      2.10	6.30	Sqm	2581.00	16,260.30
17	Supplying bubble free float glass of approved make and brand conforming to IS: 2835-1987. iv) 5mm thick coloured / tinted / smoke glass. (Page No-243, item No-9) 6      0.45      x      0.6	1.62	sqm	585.00	947.70
18	<b>(b) Priming one coat on timber or plastered</b> surface with synthetic oil bound primer of approved quality including smoothening surfaces by sand papering etc. ( Page No-200, item No-1)	105.11	Sqm	38.00	3,994.06
19	<b>(A) Painting with best quality synthetic</b> enamel paint of approved make and brand including smoothening surface by sand papering etc. including using of approved putty etc. on the surface, if necessary : With other than hi-gloss of approved quality- (a) On timber or plastered surface : With super gloss (hi-gloss) - iv) Two coats (with any shade except white) (P-200, I.no.-2)	105.11	Sqm	81.00	8,513.65
20	<b>(b) Priming one coat on steel or other metal</b> surface with synthetic oil bound primer of approved quality including smoothening surfaces by sand papering etc. 2      1.3      x      1.8 6      0.45      x      0.45	4.68 1.215 <u>5.895</u>	Sqm	29.00	170.96
21	<b>(A) Painting with best quality synthetic</b> enamel paint of approved make and brand including smoothening surface by sand papering etc. including using of approved putty etc. on the surface, if necessary : With other than hi-gloss of approved quality- (b) On steel or other metal surface : With super gloss (hi-gloss) - iv) Two coats (with any shade except white) (P-200, I.no.-2)	5.895	Sqm	79.00	465.71
22	Supplying, fitting and fixing fibre reinforced polymer (FRP) Composite door frame as per approved section with glass fibre reinforced plastic moulded skins and a special sandwich core, so as to impart monolitaheic composite structure as per approved technology of Department of Science and Technology (DST) to satisfy IS: 4020 door testing performance criteria.. (i) 66mm x 90mm PWD Building Works schedule, P-115, It - 3 (i) 4      4.35	17.40	Sqm	497.00	8,647.80
23	Supplying, fitting & fixing fibre reinforced polymer (FRP) Composite door shutters as per approved design with glass fibre reinforced plastic moulded skins and a special sandwich core, so as to impart monolitaheic composite structure as per approved technology of Department of Science and Technology (DST) to satisfy IS:4020 door testing performance criteria. In ground floor. ii) 25 mm thick P-125, It- 14(ii) 4      0.75      x      1.8	5.40	Sqm	2,581.00	13,937.40

Sl.No	Description of Items	Quantity	Unit	Rate	Amount
24	Anodised aluminium barrel / tower / socket bolt (full covered) of approved manufactured from extruded section conforming to I.S. 204/74 fitted and fixed with cadmium plated screws . (vii) 225mm long x 10mm dia. bolt. PWD Building Works schedule, P-144, It No. 26 (vii) 4 1.0	4	Each	84.00	336.00
25	Iron butt hinges of approved quality fitted and fixed with steel screws, with ISI mark. (viii) 100mm X 75mm X 3.50mm. PWD Building Works schedule, P-140, It No. -5 (viii) 4 3	12	Each	66.00	792.00
26	Anodised aluminium decorative handle (hexagonal / fluted) of approved quality fitted and fixed complete. (i) 150mm plate x 10mm dia rod x 12mm hexagonal/fluted. PWD Building Works schedule, Page -146 . Item no-31,(i) 4 1	4	Each	87.00	348.00
27	Iron hasp bolt of approved quality fitted and fixed complete (oxidised) with 16mm dia rod with concrete bolt and round fitting. b)250mm long. PWD Building Works schedule, Page -141 . Item no-10 b) 4 1	4	Each	159.00	636.00
28	Rendering the Surface of walls and ceiling with White Cement base WATER PROOF wall putty of approved make & brand.(1.5 mm thick) In Ground Floor PWD Building Works schedule, PWD, P-198, I - 5 Same as Plaster Item -painting area	105.11	Sqm	122.00	12,823.03
29	Applying interior grade Acrylic Primer of approved quality and brand on plastered and concrete surface old or new surface to receive Distemper Acrylic emulsion paint including scraping and preparing the surface thoroughly , complete as per manufacturer's specification and as per direction of the E-I-C ( Ground Floor ) ( b ) Two Coats PWD Building Works schedule, Page -74 , Item no- 46(i).	147.13	Sqm	44.20	6,503.20
30	Dry Destempering interial walls or ceiling including cleaning, washing, smoothening surface (b) two coats PWD Building Works schedule, Page -196 , Item no- 9(b) .	147.13	Sqm	49.00	7,209.43
31	Applying exterior grade Acrylic Primer of approved quality and brand on plastered or concrete surface old or new surface to receive Decorative Textured (Martt Finish) or Smooth Finish Acrylic exterior emulsion paint including scraping and preparing the surface thoroughly , complete as per manufacturer's specification and as per direction of the EIC in Ground Floor (b) two coats. PWD Building Works schedule, Page -196 , Item no- 8(b)	87.08	Sqm	45.10	3,927.20
32	Protective and Decorative Acrylic Exterior emulsion paint of approved quality, as per manufacturer's specification and as per direction of EIC to be applied overf Acrylic primer as required. The rate includes cost of materials, labour, scaffolding and all incedental charges but excluding the cost of primer in ground floor (two coats)(a) normal acrylic emulsion. PWD Building Works schedule, Page -197 , Item no- 17)	87.08	Sqm	67.00	5,834.19

Sl.No	Description of Items	Quantity	Unit	Rate	Amount
36	<p>Supplying and laying chequered tiles of any shade &amp; of approved quality with (1:1½:3) cement concrete laid in panels or patterns as directed in pavement, footpath etc. including necessary underlay 25 mm thick [avg] cement mortar (1:3) complete in all respect with all labour and materials. [Using cement slurry @ 4.4 kg/Sq.m at back side and @2.4 kg/Sq.m for joint filling]</p> <p>Red Variety (i) 25 mm. thick</p> <p>2      1.45      x      1.30</p>	3.77	Sqm	471.00	1,775.67
37	<p>Supplying, fitting and fixing Marble Slab/tile of 15 to 18 mm thickness in floor, lobby, stair, landing &amp; treads etc. over 20 mm (av.) thick base of Cement mortar (1:2) laid with white cement slurry @ 4.4 kg/Sq.m before placing marble &amp; jointed with white cement slurry @ 2.0 kg/Sq.m with necessary pigments including grinding and Granite polishing as per direction of Engineering -in - Charge in Ground Floor. {White cement and Pigment to be supplied by the Agency}</p> <p>(a) With Makrana plain pink / Adranga Pink / Garbh Gulabi / Udaypur pink / Udaypur Green / Black Bhaslana</p> <p>(iii) Area of each Slab/tile exceeding 0.60 sq.m but not exceeding 1.00 sq.m.</p> <p>(Page no. 55 , Item no.22)</p> <p>2      0.75      x      1.20</p>	1.80	Sqm	1,915.00	3,447.00
38	<p><b>Supplying and Planting of different plant / trees</b> ( Supplying well grown plants bushy and healthy, minimum height as specified i.e. exposed height including all leads &amp; lift, carriage, handling, manuring, applying presticide and fertilizer etc.</p> <p>i) Furcaria veriegated 10-12 leaves in height 20-30cm in earthen pots of size 25cm.</p> <p>x) Ficus blakii (F. Vivicon) well branched (Bushy) of height 120cm - 135 cm in earthen pot of size 30cm.</p> <p>xxvi) Areca Palm 4 - 5 suckers of height 90 cm to 105 cm in earthen pots of size 25 cm.</p> <p>(Page No-261, item No-9)</p>	4 3 3	Each Each Each	162.00 187.00 127.00	648.00 561.00 381.00
39	<p>Painting block letters or digits in Black Japan or any approved paint as per direction.</p> <p>e) Size above 7.5 cm. and upto 10 cm.</p> <p>PWD Building Works schedule, P-268, It-17(e)</p>	450.00	Each	12.00	5,400.00
	<b>Sanitary &amp; Plubming</b>				

Sl.No	Description of Items	Quantity	Unit	Rate	Amount
40	<p>Construction of septic tank of different capacities as per approved drawing with 1st class brick work in cement mortar (1:4) including two 560 mm dia. R.C.C. manhole cover (heavy type) of approved make supplied, fitted and fixed in the 100mm thick R.C.C (1:1.5:3) top slab with necessary fittings, 20mm thick cement plaster (4 : 1) with neat cement finish to the internal surfaces and 15 mm thick cement plaster (4 : 1) to outside wall upto 200 mm below G.L floor finished with 25 mm thick grey artificial stone over 100 mm thick R.C.C(1:1.5:3) bottom slab including supplying, fitting and fixing all necessary specials, fittings, S.W. tees, C.I. foot rest etc. including excavation earth in all sorts of soil, shoring, bailing out and pumping out water as necessary, ramming, dressing the bed and refilling the sides of the tanks with earth, removing spoils, filling up the chamber with clear water, removing foreign materials from the chamber and including constructing attached inspection pit as per approved drawing and connecting all necessary pipes, joints etc. with internal plaster work and artificial stone flooring is to be done with admixture of water proofing compound @ 0.5% by weight of cement with all costs of labour and materials.</p> <p>Note:- (i) Finished level of Septic Tank should be 400 mm. from Ground Level. (ii) Height of 50 mm. Ventilation pipe &amp; Mosquito proof mesh, should be followed as per IS:2470, Part-I. Payment will be made separately on the basis of actual height based on relevant I.S.Code.</p> <p>(iV) For 20 users A) With Pakur variety. (SAIL/TATA/RINL) (P-88-89, I.no.-3)</p>	1	Each	48,162.00	48,162.00
41	<p>Construction of circular soak well 2.5 metre deep in all types of sandy soils with dry brick work upto 1.6 metre from the bottom having 150 mm intermediate cement brick work (1:4) band all round and cement brick work (1:4) upto 0.90 metre from top with 20mm thick cement plastering (1:4) to inside face upto the depth of cement brick work, 15mm thick cement plaster (1:4) on outer face from top of the well upto G.L. and 6 mm thick cement plaster (1:4) on top of the R.C.C. cover slab including filling bottom 1.00 metre of inside of the well with brick metal (50 mm to 63 mm size) including R.C.C. cover slab of 100 mm thick with cement conc (1:1.5:3) with stone chips with necessary reinforcement and shuttering Including one 560 mm dia. R.C.C. manhole cover (heavy type) of approved make supplied, fitted and fixed in the cover slab with necessary fittings, making necessary arrangements for pipe connections, excavation of well including shoring, dewatering and removing the excess earth from the premises as per direction complete in all respect with all costs of labour and materials.</p> <p>With 250 mm thick dry brick work and 250 mm thick cement brick work (1:6) and 1.00m inside dia (SAIL/TATA/RINL)</p>	1	Each	16,621.00	16,621.00

Sl.No	Description of Items	Quantity	Unit	Rate	Amount
42	Constructing Inspection pit of inside measurement 600mm X 600mm X upto 600mm (depth) with 250 mm thick 1st. class brick work in cement mortar (1:4) on all sides, bottom of the pit consisting of 100 mm thick cement concrete (1:3:6) with stone chips over a layer of jhama brick flat soling, 15 mm thick (1:4) cement plaster to inside walls and out-side walls upto G.L. and 20 mm. thick (1:4) plaster to bottom of the pit, providing necessary invert with cement concrete (1:3:6) with stone chips as per direction, neat cement finishing to entire internal surfaces, top of the pit covered with 100 mm thick R.C.C. slab (1:1.5:3) with stone chips and necessary reinforcements upto 1% and shuttering including 6 mm thick cement plaster (1:4) in all external surfaces of the slab and one 560 mm dia. R.C.C. manhole cover of approved make supplied, fitted and fixed in the slab with necessary fittings, necessary earthwork in excavation in all sorts of soil, filling sides of the pit with earth and removing spoils after work complete in all respect with all costs of labour and materials. i) With Pakur variety (Other than SAIL/TATA/RINL). PWD S&P Schedule, S.P.87, Item No-1/(i), 7th Corrigenda Volume ii	1	Each	7,248.00	7,248.00
43	Supplying, fitting and fixing Anglo-Indian W.C. in white glazed vitreous china ware of approved make complete in position with necessary bolts, nuts etc. a) With 'P' trap (with vent) PWD S&P Schedule, page-79, item no -3 (a)	4	each	3,104.00	12,416.00
44	Supplying, fitting and fixing Closet seat of approved make with lid and C.P. hinges, rubber buffer and brass screws complete. (b) Anglo Indian (i) Plastic (hallow type) White PWD S&P Schedule, page-81, item no 10.b.i	4	Each	380.00	1,520.00
45	Supplying, fitting and fixing Flat back urinal (half stall urinal) in white vitreous chinaware of approved make in position with brass screws on 75 mm X 75 mm X 75 mm wooden blocks complete.  (ii) 470 mm X 280 mm X 340 mm (page No-80, item No-6)	2	Each	945.00	1,890.00
46	Supplying fitting and fixing squatting plate with integrated flushing in white vitreous set in cement concrete (6:3:1) with jhama chips complete. ( Payment of concrete will be paid seperately ) (I) 450 mm x 350 mm	1	Each	881.00	881.00
47	Supplying, fitting and fixing 10 litre P.V.C. low-down cistern conforming to I.S. specification with P.V.C. fittings complete, C.I. brackets including two coats of painting to bracket etc. PWD S&P Schedule, Page No.-36 Item No.-2,	4	Each	1,015.00	4,060.00
48	Supplying, fitting and fixing 32 mm dia. Flush Pipe of approved make with necessary fixing materials and clamps complete. i) Polythene Flush Pipe PWD S&P Schedule, Page no 81. Item no. 11(i)	2	Each	155.00	310.00
49	Supplying, fitting and fixing urinal flush pipe fittings of approved brand. (a) C.P. urinal flush pipe fittings range of one PWD S&P Schedule, S.P.81, item-12/a	2	Each	414.00	828.00
50	Supplying, fitting and fixing approved brand P.V.C. CONNECTOR white flexible, with both ends coupling with heavy brass C.P. nut, 15 mm dia., (iii) 600 mm long PWD S&P Schedule, Page No.-43 Item No.-9-iii PWD,	6	Each	107.00	642.00

Sl.No	Description of Items	Quantity	Unit	Rate	Amount
51	Supplying, fitting and fixing pillar cock of approved make. a) (i) CP Pillar Cock - 15 mm. (Equivalent to Code No. 507 & Model - Tropical / Sumthing Special of ESSCO or similar brand). (P. No. - 45, Item. No. - 19(a)i, Pwd Sanitary Plumbing Schedule 2017)	2	Each	555.00	1,110.00
52	Supplying, fitting and fixing bib cock or stop cock. (a) (i) Chromium plated Bib Cock short body (Equivalent to Code No. 511 & Model - Tropical / Sumthing Special of ESSCO or similar brand). (page No-6, item No-7/a/i)	4	no	539.00	2,156.00
53	(b) (i) Chromium plated Stop Cock (Equivalent to Code No. 513(A) & 513(B) & Model - Tropical / Sumthing Special of ESSCO or similar PWD S&P Schedule, Page No.-6 Item No.-7-b-i	6	no	493.00	2,958.00
54	Chromium plated angular Stop Cock with wall flange (Equivalent to Code No. 5053 & Model - Florentine of Jaquar or similar brand). PWD S&P Schedule, Page No.-6 Item No.-7-d-i,	2	Each	815.00	1,630.00
55	Supplying, fitting and fixing PVC pipes of approved make of Schedule 80 (medium duty) conforming to ASTM D - 1785 and threaded to match with GI Pipes as per IS : 1239 (Part - I). with all necessary accessories, specials viz. socket, bend, tee, union, cross, elbo, nipple, long screw, reducing socket, reducing tee, short piece etc. fitted with holder bats clamps, including cutting pipes, making threads, fitting, fixing etc. complete in all respect including cost of all necessary fittings as required, jointing materials and two coats of painting with approved paint in any position above ground. (Payment will be made on the centre line measurements of total pipe line including all specials. No separate payment will be made for accessories, specials. Payment for painting will be made separately) (a) For Exposed Work PVC Pipes, 25 mm Page No.-12 Item No.-19-i(a), PWD, VOL-II, 2017-18  (page No-29, item No-1/a/i) 25 mm	15.0	m	177.00	2,655.00
	15mm (b) For Concealed Work (i) PVC Pipes 15 mm	28.50	m	101.00	2,878.50
		14.50	m	137.00	1,986.50
56	Supplying and fitting fixing of gunmetal wheel valve of approved brand and make tested to 21 Kg per sq. cm. 25 mm dia(E5) PWD S&P Schedule, P-5 It-5,vii),	2.00	Each	778.00	1,556.00
57	Supplying, fitting and fixing white vitreous china best quality approved make wash basin with C.I. brackets on 75 mm X 75 mm wooden blocks, C.P. waste fittings of 32 mm dia., mending good all damages and painting the brackets with two coats of approved paint. (ii) 550 mm X 400 mm size PWD S&P Schedule, P-41, It 2 (ii)	2	no	2,208.00	4,416.00
58	Supplying, fitting and fixing approved brand 32 mm dia. P.V.C. waste pipe, with PVC coupling at one end fitted with necessary clamps. (iv) 1050 mm long (page No-43, item No-10/iv)	2	no	91.00	182.00
59	(f) Hand Shower (Health Faucet) with 1mtr Flexible Tube with Wall Hook (Equivalent to Code No. 573 & Model - ALLIED of Jaquar or similar). PWD S&P Schedule, Page No.-3 Item No.- 3 f,	4	no	1,251.00	5,004.00

Sl.No	Description of Items	Quantity	Unit	Rate	Amount
60	Supply of UPVC pipes (B Type) & fittings conforming to IS-13592-1992.(A) (i) Single Socketed 3 Meter Length, (b) 110 mm PWD S&P Schedule, Page No.-68 Item No. 23,(A)(i)(b)	15.0	m	292.00	4,380.00
61	(B) Fittings (i) Coupler (page No-70, item No-23/B/i) (b) 110	5	each	85.00	425.00
62	(B) Fittings (ii) Plain Tee (page No-70, item No-23/B/ii) (b) 110	4	each	85.00	340.00
63	(B) Fittings (iii) Door Tee (page No-70, item No-23/B/iii) (b) 110	4	each	195.00	780.00
64	(B) Fittings (ix) Door Bend 45° (page No-71, item No-23/B/ix)	5	each	89.00	445.00
65	xi) Door Bend (T.S.), (b) 110 mm	4	Each	147.00	588.00
66	(B) Fittings (xvi) pipe clip (page No-71, item No-23/B/xvi) (b) 110	15	each	21.00	315.00
67	xvii) W.C. Connector (150 mm long) 125 X 110(W/WC Ring) 75 mm	2	Each	142.00	284.00
68	xxxi) Plain Floor Trap with Top tile & Strainer 75 mm	3	Each	144.00	432.00
69	L) Rubber Ring, (b) 110 mm	15	Each	17.00	255.00
70	Rubber Lubricant 500 ML (page No-74, item No-23/c)	5	each	187.00	935.00
71	Solvent Cement 250 ML (page No-74, item No-23/d)	10	each	103.00	1,030.00
72	(B)Fittings (xv) Vent Cowl (page No-74, item No-23/c)	2	each	33.00	66.00
73	Supplying P.V.C. water storage tank of approved quality with closed top with lid (Black) - Multilayer (a) 1000 litre capacity (page No-37, item No-6/b)	1	no	5,128.00	5,128.00
74	Labour for hoisting plastic water storage tank. a) Upto 1st story from G.L. (page No-37, item No-10/a, b)	1	no	96.00	96.00
75	Labour for punching hole in plastic water storage tank upto 50 mm dia. (page No-38, item No-13)	2	each	19.00	38.00
76	Labour for fitting and fixing U.P.V.C. pipes for above ground work including cost of jointing materials etc. fitting and fixing all necessary specials, cutting pipes, cutting holes in total pipeline including specials. (B) Under ground, (ii) 110 mm dia. PWD S&P Schedule, (P. - 74, Item. No. - 24 (B)	15.0	Mtr	84.00	1,260.00
77	Supplying, fitting & fixing UPVC pipes A- Type and fittings conforming to IS:13592-1992 with all necessary clamps nails, including making holes in walls, floor etc. cutting trenches in any soil through masonry concrete structures etc if necessary and mending good damages including joining with jointing materails (Spun Yarn, Valamoid/Bitumen/M-Seal etc) complete. A) UPVC Pipes: (i) 75 mm. Dia. (P. - 212, Item. No. - 21 (A)(i) , (B),(c),(i) & (B), (d),(i), Pwd volume-i, 2017)	10.0	Mtr	188.00	1,880.00
78	B) UPVC Fittings: c) Bend 87.5 degree (i) 75 mm. Dia.	2.0	Mtr	84.00	168.00
79	B) UPVC Fittings: d) Shoe (i) 75 mm. Dia.	2.0	Mtr	78.00	156.00
80	Supplying, fitting and fixing in position C.I. manhole/ pit cover with (a) Round				

Sl.No	Description of Items	Quantity	Unit	Rate	Amount
	(i) 450 mm X 100 mm X 21 kg (approx.) (page No-93, item No-9)	1	no	1,696.00	1,696.00
81	Supplying, fitting and fixing towel rail with two brackets.  (a) C.P. over brass (ii) 25 mm dia. and 600 mm long (Page No-82, item No-22)	4	Each	430.00	1,720.00
82	Supplying, fitting and fixing bevelled edged mirror 5.5 mm thick silver red as per I.S. 3438 / 1965 together with brass C.P. hinges. (ii) 600 mm X 450 mm PWD S&P Schedule, P-81, It-15(ii)	2	Each	484.00	968.00
83	Supplying, fitting and fixing soap holder. (b) Fibre glass Sanitary and plumbing work schedule P-82, It-18(b)	6	Each	58.00	348.00
84	Supplying, fitting and fixing glass shelf with aluminium guard rails. (a) Ordinary type with 5.5 mm sheet glass (i) 450 mm X 125 mm Sanitary and plumbing work schedule P-81, It-16(a)(i)	2	Each	341.00	682.00
				Total Rs.	581,397.75
			Add S.G.S.T. @	9%	52,325.80
			Add C.G.S.T. @	9%	52,325.80
			Cost Of Civil Work		686,049.34
			Add Labour Welfare Cess. @	1%	9,391.00
			Total Amount Including Labour Welfare Cess.		695,440.34
			Add Contengency @3%		28,453.00
			Total Amount Including L.W.C. and contengency		723,893.34
			Say Rs.		723,893.00
<b>Rupees Seven Lakh TwentyThree Thousand Eight Hundred NinetyThree Only</b>					

*Jaya Prakash Mishra*  
24/09/25  
**Sub Assistant Engineer**  
Kamarhati Municipality

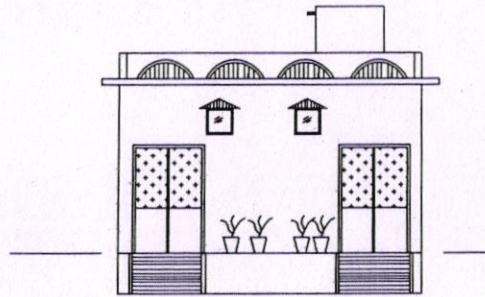
*Laxmi*  
31/11/25  
**ASSISTANT ENGINEER**  
KAMARHATI MUNICIPALITY

*[Signature]*  
**Chairman**  
Kamarhati Municipality

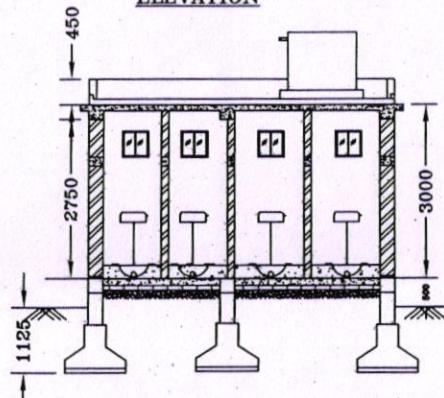
**VETTED**  
*[Signature]*  
19.11.25  
**Superintending Engineer (C)**  
W & S (GAP) Sector  
K. M. D. A.

KAMARHATI MUNICIPALITY

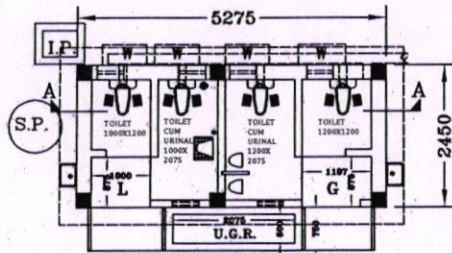
CONSTRUCTION OF COMMUNITY TOILET AT MADHYA PALLY, UNDER WARD NO. 33



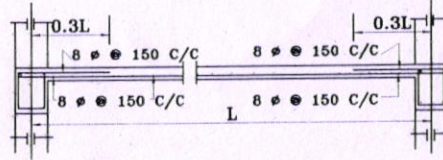
ELEVATION



SECTION ON A-A

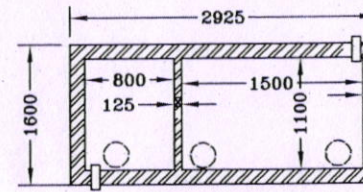


SECTIONAL PLAN



Details Of R.C.C  
Roof Slab & Beam

(SCALE - 1:25)



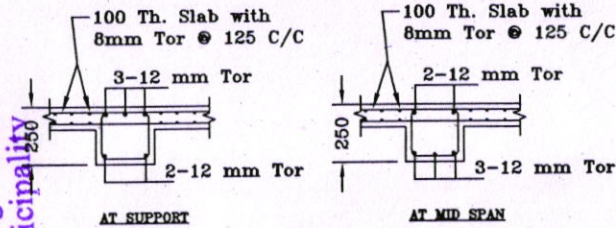
SECTIONAL PLAN  
OF SEPTIC  
TANK(20 users)

Door & window schedule

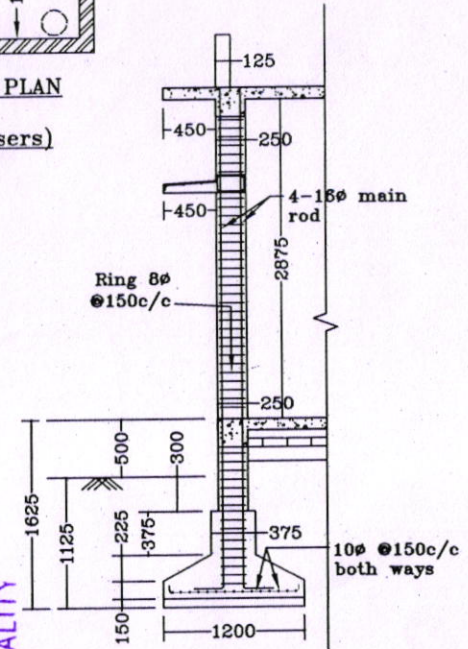
D=0.75 x 1.85 - 4 Oos.

W=0.45 x 0.45 - 6 nos.

G=1.00 x 1.80 - 2 nos.

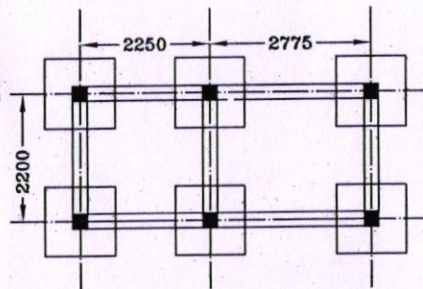


F/BEAM & R/BEAM  
WITH SLAB DETAILS

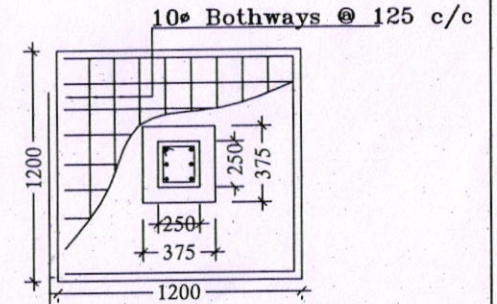


DETAIL OF COLUMN &  
FOUNDATION

SCALE =1:50



LAYOUT OF COLUMN AND FLOOR BEAM



Jayprabhu Mishra  
Sub Assistant Engineer  
Kamarhati Municipality

Assistant Engineer  
KAMARHATI MUNICIPALITY