

**KAMARHATI MUNICIPALITY**

**Construction of the Community Toilet Block at Garodh (near Taxmaco Factory), under Ward no.29  
for Model Plan 4 - 4 Seater**

No. Of seat - Male - ( W.C. -2+ Urinal -2) & Female - (W.C. -2 + Urinal -1) = Total ( W.C. -4 & Urinal -3)

Rate As per PWD Building Works Schedule ( Volume 1) With effect from 01.11.2017

Sl. No.	Item Description & Item No.						Quantity	Rate	Unit	Amount
	Details	Side	No.	L	B	H	QNTY.			
1	Earth work in excavation of foundation trenches or drains, in all sorts of soil (including mixed soil but excluding laterite or sandstone) including removing, spreading or stacking the spoils within a lead of 75 m. as directed. The item includes necessary trimming the sides of trenches, levelling, dressing and ramming the bottom, bailing out water as required complete. (a) Depth of excavation not exceeding 1,500 mm. PWD Building Works schedule Page - 1, Item -2.a						25.126	11927.00	%Cum	2996.77
	Column		6	1.500	1.5	1.1	14.850			
	Tie Beam		1	16.350	0.35	0.375	2.146			
	Reservior		1	2.5	2	1.625	8.130			
							25.126			
2	Single Brick Flat Soling of picked jhama bricks including ramming and dressing bed to proper level and filling joints with local sand. PWD Building Works schedule, Page- 14, Item - 1 ( Corri. Page-01, Date-04-06-2018)						33.38	361.00	Sqm	12051.08
	Column		6	1.500	1.5		13.500			
	Tie Beam		1	17.950	0.25		4.488			
	Parti beam		4	1.350	0.125		0.675			
	Floor		6	1.2	1.35		9.720			
	Reservior		1	2.5	2		5.000			
							33.383			
3	Supplying and laying Polythene Sheet (150gm / sq.m.) over damp proof course or below flooring or roof terracing or in foundation or in foundation trenches. PWD Building Works schedule, Page -47, Item -3						28.50	24.00	Sqm	684.00
	Open Space		1	10	1.5		15.000			
	Approch		1	9	1.5		13.500			
							28.500			
4	Cement concrete with graded jhama khoa (30 mm size) excluding shuttering In ground floor and foundation. (a) 1:3:6 proportion. PWD Building Works schedule, Page -23, Item - B.1.a, ( Corri. Page-09, Date-04-06-2018) Rate Analysis						5.67	4628.87	Cum	26254.95
	Column		6	1.500	1.5	0.1	1.350			
	Floor		6	1.2	1.35	0.1	0.972			
	Reservior		1	2.5	2	0.1	0.500			
	Open Space		1	10	1.5	0.1	1.500			
	Approch Road		1	9	1.5	0.1	1.350			
							5.672			
5	25mm. thick damp proof course with cement concrete with stone chips (1:1.5:3) [with graded stone aggregate 10 mm nominal size] and admixture of water proofing compound as per manufacturer's specification followed by two coat of polymer based paint, (1st coat after 4 to 5 days of concrete laying and 2 nd coat just before brick masonry work) as directed (cost of water proofing compound & polymer based paint to be paid separately).(Chequering not required over concrete or painted surface). [Note: - Waterproofing as per item 9, polymer based paint as per item 8 (a) of subhead C of Section (C). PWD Building Works schedule, Page -47, Item -1 (Rate Analysis)						2.92	184.28	Sqm	538.10
			1	23.35	0.125		2.919			
6	Brick work with 1st class bricks in cement mortar (1:4) (a) In foundation and plinth						5.93	5613.36	Cum	33287.22
	GL 2 PL		1	17.95	0.250	0.450	2.0194			
	Front Stair		1	8.075	0.25	0.3	0.6056			
			1	8.075	0.25	0.15	0.3028			
	Reservior		1	8	0.25	1.5	3.0000			
							5.928			

7	125 mm. thick brick work with 1st class bricks in cement mortar (1:4) in ground floor. PWD Building Works schedule, Page - 16, Item - 16 ( Corri. Page- 03, Date-04-06-2018) (Rate Analysis)						54.466	728.47	Sqm	39677.03
	Wall	1	23.4		2.375	55.456				
		4	1.350		0.175	0.945				
	Parapet	1	23.250		0.300	6.975				
		-6	0.750		1.8	-8.100				
		-6	0.450		0.30	-0.810				
	54.466									
8	Earth work in filling in foundation trenches or plinth with good earth, in layers not exceeding 150 mm. including watering and ramming etc. layer by layer complete. (Payment to be made on the basis of measurement of finished quantity of work). (a) With earth obtained from excavation of foundation. PWD Building Works schedule, Page - 1, Item -3.a						16.59	7754.00	%Cum	1286.39
	2/3rd of Earth work		0.66	25.13		16.59				
9	(A) Filling in foundation or plinth by silver sand in layers not exceeding 150 mm as directed and consolidating the same by thorough saturation with water, ramming complete including the cost of supply of sand. (payment to be made on measurement of finished quantity) PWD Building Works schedule, Page - 2, Item -4.a						3.63	93621.00	%Cum	3394.58
		1	7.325	1.1	0.45	3.626				
10	Hire and labour charges for shuttering with centering and necessary staging upto 4 m using approved stout props and thick hard wood planks of approved thickness with required bracing for concrete slabs, beams and columns, lintels curved or straight including fitting, fixing and striking out after completion of works (upto roof of ground floor) (f) 25 mm to 30 mm shuttering without staging in foundation PWD Building Works schedule, Page -42, Item- 36.f						21.28	209.00	Sqm	4447.52
	Foundation	24	1.20		0.15	4.32				
	Tie Beam	1	20.950		0.3	6.29				
	Inside	1	16.350		0.3	4.91				
	Parti beam	8	1.350		0.25	2.70				
	Coumn	24	0.3		0.425	3.06				
	21.270									
11	Hire and labour charges for shuttering with centering and necessary staging upto 4 m using approved stout props and thick hard wood planks of approved thickness with required bracing for concrete slabs, beams and columns, lintels curved or straight including fitting, fixing and striking out after completion of works (upto roof of ground floor) (a) 25 mm to 30 mm thick wooden shuttering as per decision & direction of Engineer-In-Charge. PWD Building Works schedule, Page -42, Item- 36.a						55.34	335.00	Sqm	18538.90
	Coumn	24	0.25		2.375	14.250				
	Roof Beam	1	20.95		0.175	3.666				
	Roof Beam	1	16.35		0.175	2.861				
	Lintel	2	8.075		0.2	3.230				
	Lintel btm	6	0.750		0.125	0.563				
	slab with b btm	1	8.975	2.65		23.784				
	Slab Side	1	23.250		0.125	2.906				
	Reservior	1	2	1.5		3.000				
		1	9		0.12	1.080				
	55.340									
12	Ordinary Cement concrete (mix 1:1.5:3) with graded stone chips (20 mm nominal size) excluding shuttering and reinforcement,if any, in ground floor as per relevant IS codes. a) Pakur Variety /Chandil Variety PWD Building Works schedule, p-26 Item 10 a (Rate Analysis)						9.523	5863.13	Cum	55835.50
	Colm foot	6	1.2	1.2	0.15	1.296				
	$6*0.15/3*(1*1+0.3*0.3+1*0.3)=-.417$									0.420
	Tool Column	6	0.3	0.3	0.425	0.230				
	Column	6	0.25	0.25	2.375	0.890				
	Tie Beam	1	20.950	0.25	0.3	1.571				
	Parti beam	4	1.600	0.25	0.25	0.400				

	Lintel		1	8.075	0.125	0.2	0.202				
	Slab Beam		1	20.95	0.25	0.175	0.917				
	Slab		1	8.975	2.7	0.125	2.973				
	Reservior		1	2.5	2	0.125	0.625				
							9.523				
13	Reinforcement for reinforced concrete work in all sorts of structures including distribution bars, stirrups, binders etc initial straightening and removal of loose rust (if necessary), cutting to requisite length, hooking and bending to correct shape, placing in proper position and binding with 16 gauge black annealed wire at every intersection, complete as per drawing and direction. (a) For works in foundation and upto roof of ground floor/upto 4 m. (i) Tor steel/Mild Steel , JSPL/SWAYN/ELETRO/STEEL PWD Building Works schedule, Page - 43, Item - 40.a.i.1( Corri. 10th Page-01, Date-23-01-2020) (Rate Analysis)							0.8350	55194.51	M.T.	46087.42
	Footing		6	16	0.95	0.617	0.001	0.056			
	Column		6	4	4.175	0.89	0.001	0.089			
	Stirup		6	24	0.850	0.39	0.001	0.048			
	Tie beam		2	4	8.225	1.56	0.001	0.103			
			3	4	1.75	0.89	0.001	0.019			
	Stirup		1	118	1.05	0.39	0.001	0.048			
	PLBeam		4	4	1.750	0.89	0.001	0.025			
	Stirup		4	8	0.750	0.39	0.001	0.009			
	Lintel		1	4	8.125	0.617	0.001	0.020			
	Stirup		1	56	0.650	0.39	0.001	0.014			
	Roof Beam		2	4	8.225	1.56	0.001	0.103			
			3	4	1.75	0.89	0.001	0.019			
	Stirup		1	118	1.05	0.39	0.001	0.048			
	Slab		2	45	2.55	0.39	0.001	0.090			
	less l/3		-1	15	0.85	0.39	0.001	-0.005			
			2	15	8.925	0.39	0.001	0.104			
	less l/3		-1	5	3.0	0.39	0.001	-0.006			
	UGR		1	19	1.65	0.39	0.001	0.012			
			1	14	2.25	0.39	0.001	0.012			
	Lapping		15	1	0.8	1.56	0.001	0.019			
	Lapping		15	1	0.6	0.89	0.001	0.008			
								0.8354			
14	Artificial stone in floor, dado, staircase etc with cement concrete (1:2:4) with stone chips, laid in panels as directed with topping made with ordinary or white cement (as necessary) and marble dust in proportion (1:2) including smooth finishing and rounding off corners including raking out joints or roughening of concrete surface and application of cement slurry before flooring..... 25 mm. thick For roofing PWD Building Works schedule, P-48, It-6.ii (Rate Analysis)							53.19	265.95	Sqm	14145.88
	roof		1	8.725	2.40			20.940			
	Open Space		1	8.5	1.5		0.1	12.750			
	Approch Road		1	13	1.5		0.1	19.500			
								53.190			
15	Neat cement punning about 1.5mm thick in wall, dado, window sill, floor etc. NOTE:Cement 0.152 cu.m per100 sq.m. PWD Building Works schedule, P-192, It. No. 15 (Rate Analysis)							27.70	32.75	Sqm	907.18
	Below Plinth		1	8.075			0.45	3.634			
			2	1.600			0.45	1.440			
	Reservior		1	7			1.5	10.500			
			1	2.5	2			5.000			
			2	2	1.5			6.000			
			1	9			0.125	1.130			
								27.704			
16	Labour for Chipping of concrete surface before taking up Plastering work. PWD Building Works schedule, P-192, It-1							75.39	21.00	Sqm	1583.19
	Lintel side		2	8.075			0.2	3.230			
	lintel btm		6	0.750			0.125	0.563			
	Beam		2	19.45			0.175	6.808			
			1	20.20			0.250	5.050			
	Slab bottom		1	8.975	2.65			23.784			

Slab side	1	23.150		0.125	2.894				
For roof treatment	1	8.725	2.40		20.940				
Reservior	2	2	1.5		6.000				
	1	2.5	2		5.000				
	1	9		0.125	1.125				
					75.393				
17	Plaster (to wall, floor, ceiling etc.) with sand and cement mortar including rounding off or chamfering corners as directed and raking out joints including throating, nosing and drip course, scaffolding/staging where necessary (Ground floor).[Excluding cost of chipping over concrete surface] (i) With 1:6 cement mortar (c) 15 mm thick plaster PWD Building Works schedule, P-189 It- No. 1 (Rate Analysis)					90.89	148.53	Sqm	13499.89
	Below plinth	1	11.275	0.45	5.074				
	Outer wall	1	8.075	2.55	20.591				
	Outer wall	1	19.350	0.60	11.610				
	Deduction	-6	0.750	2.10	-9.450				
	Iner Wall	6	4.9	0.6	17.460				
	Parapet wall	1	23.25	0.725	16.856				
	Reservior	1	7	1.5	10.500				
		2	2.5	2	10.000				
		2	2	1.5	6.000				
		1	9	0.25	2.250				
					90.891				
18	Plaster (to wall, floor, ceiling etc.) with sand and cement mortar including rounding off or chamfering corners as directed and raking out joints including throating, nosing and drip course, scaffolding/staging where necessary (Ground floor).[Excluding cost of chipping over concrete surface] (ii) With 1:4 cement mortar (c) 10 mm thick plaster PWD Building Works schedule, P-189 It- No. 1 (ii)(c) (Rate Analysis)					23.78	130.53	Sqm	3104.00
	Slab bottom	1		8.975	2.7	23.784			
19	Supplying, fitting and fixing fibre reinforced polymer (FRP) Composite door frame as per approved section with glass fibre reinforced plastic moulded skins and a special sandwich core, so as to impart monolitaheic composite structure as per approved technology of Department of Science and Technology (DST) to satisfy IS: 4020 door testing performance criteria.. (i) 66mm x 90mm PWD Building Works schedule, P-115, It - 3 (i)					26.10	497.00	Mtr	12971.70
		6	4.35		26.10				
20	Supplying, fitting & fixing fibre reinforced polymer (FRP) Composite door shutters as per approved design with glass fibre reinforced plastic moulded skins and a special sandwich core, so as to impart monolitaheic composite structure as per approved technology of Department of Science and Technology (DST) to satisfy IS:4020 door testing performance criteria. In ground floor. ii) 25 mm thick P-125, It- 14(ii).					6.910	2581.00	Sqm	17834.71
		6	1.734	0.664	6.91				
21	Anodised aluminium barrel / tower / socket bolt (full covered) of approved manufactured from extruded section conforming to I.S. 204/74 fitted and fixed with cadmium plated screws . (vii) 225mm long x 10mm dia. bolt. PWD Building Works schedule, P-144, It No. 26 (vii)					6	84.00	Each	504.00
		6	1		6				
22	Iron butt hinges of approved quality fitted and fixed with steel screws, with ISI mark. (viii) 100mm X 75mm X 3.50mm. PWD Building Works schedule, P-140, It No. -5 (viii)					18	66.00	Each	1188.00
		6	3		18				
23	Anodised aluminium decorative handle (hexagonal / fluted) of approed quality fitted and fixed complete. (i) 150mm plate x 10mm dia rod x 12mm hexagonal/fluted. PWD Building Works schedule, Page -146 . Item no-31,(i)					12	87.00	Each	1044.00
		6	2		12				
24	Iron hasp bolt of approved quality fitted and fixed complete (oxidised) with 16mm dia rod with concrete bolt and round fitting. .b)250mm long. PWD Building Works schedule, Page -141 . Item no-10 b)					6.00	159.00	Each	954.00
		6	1		6				

25	Rendering the Surface of walls and ceiling with White Cement base WATER PROOF wall putty of approved make & brand.(1.5 mm thick) In Ground Floor PWD Building Works schedule, PWD, P- 198, I - 5	109.60	122.00	Sqm	13371.20	
	Same as Plaster Item - Plinth plaster 109.60					
26	(b) Priming one coat on timber or plastered surface with synthetic oil bound primer of approved quality including smoothening surfaces by sand papering etc. PWD Building Works schedule, Page -200 . Item no- 1 (b)	109.60	38.00	Sqm	4164.80	
	Same as Plaster Item - Plinth plaster 109.60					
27	(A) Painting with best quality synthetic enamel paint of approved make and brand including smoothening surface by sand papering etc. including using of approved putty etc. on the surface, if necessary : Page -200 . Item no- 1 (b) (a) On timber or plastered surface : With super gloss (hi-gloss) - (iv) Two coats (with any shade except white) PWD Building Works schedule, Page -200 . Item no- 2(A)(a)(iv)	109.60	81.00	Sqm	8877.60	
	Same as Plaster Item - Plinth plaster 109.60					
28	(a) M.S.or W.I. Ornamental grill of approved design joints continuously welded with M.S, W.I. Flats and bars of windows, railing etc. fitted and fixed with necessary screws and lugs in ground floor.. (i) Grill weighing above 10 Kg./sq.mtr and up to 16 Kg./sq. mtr. PWD Building Works schedule, P-104 Item-13 A (i) (3rd Corrigendam Page No 91)	0.55	9888.00	Qntl	5438.40	
	Grill	6	0.6	0.45	0.16	0.26
	Box for pump	5	0.6	0.6	0.16	0.29
						0.549
29	a) Priming one coat on steel or other metal surface with synthetic oil bound primer of approved quality including smoothening surfaces by sand papering etc. PWD Building Works schedule, P/200 Item-1(a)	3.42	29.00	Sqm	99.18	
		6	0.6	0.45		1.62
		5	0.6	0.6		1.8
						3.420
30	(A) Painting with best quality synthetic enamel paint of approved make and brand including smoothening surface by sand papering etc. including using of approved putty etc. on the surface, if necessary : (b) On steel or other metal surface : (iv) Two coats (with any shade except white) PWD Building Works schedule, P-200 Item-2(b)(iv)	3.42	79.00	Sqm	270.18	
		6	0.6	0.45		1.62
		5	0.6	0.6		1.8
						3.420
31	Supplying and laying true to line and level vitrified tiles of approved brand (size not less than 600 mm X 600 mm X 10 mm thick) in floor, skirting etc. set in 20 mm sand cement mortar (1:4) and 2 mm thick cement slurry back side of tiles using cement @ 2.91Kg./sqM or using polymerised adhesive (6 mm thick layer applied directly over finished artificial stone floor/Mosaic etc without any backing course) laid after application slurry using 1.75 Kg of cement per sqM below mortar only, joints grouted with admixture of white cement and colouring Pigment to match with colour of tiles / epoxy grout materials of approved make as directed and removal of wax coating of top surface of tiles with warm water and polishing the tiles using soft and dry cloth upto mirror finish complete including the cost of materials, labour and all other incidental charges complete true to the manufacturer's specification and direction of Engineer-in-Charge. (White cement, synthetic adhesive and grout material to be supplied by the contrr)e I (I) With application slurry @1.75 kg/ Sq.m, 20 mm sand cement mortar (1:4) & 2 mm thick cement slurry at back side of tiles, 0.2 kg/ Sq.m white cement for joint filling with pigment. (A) Deep Colour & White PWD Building Works schedule, Page-66 Item-36 (A) ( 3rd Corrigendam , Page -36)	17.39	1704.00	Sqm	29632.56	
	Stair	1	8.075	0.95		7.67
	floor	6	1.20	1.35		9.72
						17.391

32	Supplying, fitting & fixing 1st quality Ceramic tiles in walls and floors to match with the existing work & 4 nos. of key stones (10mm) fixed with araldite at the back of each tile & finishing the joints with white cement mixed with colouring oxide if required to match the colour of tiles including roughening of concrete surface, if necessary or by synthetic adhesive & grout materials etc. B) Wall b) Area of each tile above 0.09 Sq.m ii) Other than Coloured decorative including white PWD Building Works schedule, page-64, Item:35.(B.) (b).(ii) ( 3rd Corrigendam ,Page 36)	64.630	1047.00	Sqm	67667.61
	Out side	1	11.275	1.95	21.99
	Door	-6	0.75	1.8	-8.10
	Door frame side	6	4.65	0.075	2.09
	Inner	6	4.85	1.95	56.75
		-6	0.75	1.8	-8.10
					64.624
33	Supplying profiles of required section made of Aluminium Alloy Extrusions conforming to IS: 732-1983 and IS: 1285- 1975; Anodized (with required film thickness and specified colour / natural) matt finished conforming to IS: 1868-1983 for fabrication of composite door, sliding & casement windows, partitions, formed of basic sections of any ISI embossed / certified make and brand as per direction of Engineer - In- Charge. (Payment will be made on finished length of the work). (A) In 10-12 Micron thickness Anodizing film I) Natural white h) Louvered window. i) Top, bottom and side member. PWD Building Works schedule, PWD, P-233, I- 1(h) i	16.80	183.00	M	3074.40
		8	2.1		16.800
34	ii) Louvered Section.	14.40	658.00	M	9475.20
		24	0.6		14.400
35	iii) Cleat angle ( Non-anodized).	12.96	263.00	M	3408.48
		24	0.54		12.9600
36	Labour charge for fabrication and installation of composite door, window, partitions made from anodized extruded alloy aluminium sections for the following units:- (A) Glazed aluminium sliding windows made of extruded and anodized alloy aluminium sections, fabrications, including cutting to proper shape and size, drilling and aligning of window shutter frame fitted with in built locking arrangements, sliding rollers and other necessary fittings, fixture, adhesives and joineries along with extruded neoprene or EPDM gasketing in between window frame and masonry work (walls, column, beam.lintels etc.) as well as between glass and shutter frame for fixing glass and Polysulphide sealant and in between shutter and window frame where necessary including cutting to requisite size and fixing glass as per drawing, specification and direction of EIC. The rate includes the hire charge of all tools and plants, including all incidental charges, adhesive, joineries such as screw, cleat angle etc. but excluding the cost of extruded aluminium sections, glass, neoprene / EPDM gasket, locking arrangement and rollers. v) Louvered window. PWD Building Works schedule SOR, PWD, P-239, I- 2 (v)	2.16	730.00	Sqm	1576.80
		8	0.6	0.45	2.160
37	Supplying bubble free float glass of approved make and brand conforming to IS: 2835-1987. iv) 5mm thick coloured / tinted / smoke glass. PWD Building Works schedule, P-243, I- 9	2.16	585.00	Sq.M.	1263.60
		8	0.6	0.45	2.160
38	Painting block letters or digits in Black Japan or any approved paint as per direction. e) Size above 7.5 cm. and upto 10 cm. PWD Building Works schedule, P-268, It-17(e)	450	12.00	Each	5400.00
39	Supplying, fitting and fixing 18 mm thick marble partition slab with chawk doongri marbel square cut, both sides polished with two front corners rounded and edges polished. Sanitary and plumbing work schedule P-81, It-13	0.72	1426.00	Sqm	1026.72

40	Supplying and Planting of different plant / trees ( Supplying well grown plants bushy and healthy, minimum height as specified i.e. exposed height including all leads & lift, carriage, handling, manuring, applying pesticide and fertilizer etc. . i) Furcaria variegated 10-12 leaves in height 20-30cm in earthen pots of size 25cm. PWD Building Works schedule, Page -261, It- 9 (i)	7	162.00	Each	1134.00
41	x) Ficus blakii (F. Vivicon) well branched (Bushy) of height 120cm - 135 cm in earthen pot of size 30cm. PWD Building Works schedule, Page -261, It- 9 (x)	7	187.00	Each	1309.00
42	xxvi) Areca Palm 4 - 5 suckers of height 90 cm to 105 cm in earthen pots of size 25 cm. PWD Building Works schedule, Page -261, It- 9 (xxvi)	6	127.00	Each	762.00
43	Supplying, fitting and fixing Anglo-Indian W.C. in white glazed vitreous china ware of approved make complete in position with necessary bolts, nuts etc. a) With 'P' trap (with vent) PWD S&P Schedule, page-79, item no -3 (a)	3	3104.00	Each	9312.00
44	Supplying, fitting and fixing Closet seat of approved make with lid and C.P.hinges, rubber buffer and brass screws complete .(b) Anglo Indian (i) Plastic (hallow type) White PWD S&P Schedule, page-81,item no 10.b.i	3	380.00	Each	1140.00
45	Supplying, fitting and fixing Shallow water closet Indian pattern (I.P.W.C.) of approved make in white vitreous chinaware in position (excluding cost of concrete for fixing). (i) 580 mm long PWD S&P Schedule, page-79,item no -1 (i)	1	973.00	Each	973.00
46	Supplying, fitting and fixing Flat back urinal (half stall urinal) in white vitreous chinaware of approved make in position with brass screws on 75 mm X 75 mm X 75 mm wooden blocks complete (ii) 470 mm X 280 mm X 340 mm PWD S&P Schedule, page.80,item no-6/(ii)	2	945.00	Each	1890.00
47	Supplying, fitting and fixing Squating plate with integral flushing in white vitreous chinaware of approved make in cement concrete (6:3:1) with jhama chips complete. (Payment of concrete will be paid seperately). (i) 450 mm X 350 mm PWD S&P Schedule, (P - 80, Item. No. - 7 ,	1	881.00	Each	881.00
48	Supplying, fitting and fixing 10 litre P.V.C. low-down cistern conforming to I.S. specification with P.V.C. fittings complete,C.I. brackets including two coats of painting to bracket etc. PWD S&P Schedule, Page No.-36 Item No.-2,	4	1015.00	Nos	4060.00
49	Supplying,fitting and fixing 32 mm dia. Flush Pipe of approved make with necessary fixing materials and clamps complete. i) Polythene Flush Pipe PWD S&P Schedule, Page no 81. Item no. 11(i)	2	155.00	Each	310.00
50	Supplying, fitting and fixing urinal flush pipe fittings of approved brand. (a) C.P. urinal flush pipe fittings range of one PWD S&P Schedule, S.P.81,item-12/a	2	414.00	Each	828.00
51	Supplying, fitting and fixing white vitreous china best quality approved make wash basin with C.I. brackets on 75 mm X 75 mm wooden blocks, C.P. waste fittings of 32 mm dia., mending good all damages and painting the brackets with two coats of approved paint. (ii) 550 mm X 400 mm size PWD S&P Schedule, P-41, It 2 (ii)	2.00	2208.00	Each	4416.00
52	Supplying,fitting and fixing approved brand P.V.C. CONNECTOR white flexible, with both ends coupling with heavy brass C.P. nut, 15 mm dia., (iii) 600 mm long PWD S&P Schedule, Page No.-43 Item No.-9-iii PWD,	9.00	107.00	Each	963.00
53	Supplying,fitting and fixing approved brand 32 mm dia.P.V.C. waste pipe, with PVC coupling at one end fitted with necessary clamps. (iv) 1050 mm long each PWD S&P Schedule, Page No.-43 Item No. 10-iv	2.00	91.00	Each	182.00
54	(f) Hand Shower(Health Faucet) with 1mtr Flexible Tube with Wall Hook(Equivalent to Code No.573 & Model -ALLIED of Jaquar or similar). PWD S&P Schedule, Page No.-3 Item No.- 3 f,	1.00	1251.00	Each	1251.00

55	(a) (i) Chromium plated Bib Cock short body (Equivalent to Code No. 511 & Model - Tropical / Sumthing Special of ESSCO or similar brand). PWD S&P Schedule, Page No.-6 Item No.-7-a-i	6.00	539.00	Each	3234.00
56	(b) (i) Chromium plated Stop Cock (Equivalent to Code No. 513(A) & 513(B) & Model - Tropical / Sumthing Special of ESSCO or similar brand). PWD S&P Schedule, Page No.-6 Item No.-7-b-i	3.00	493.00	Each	1479.00
57	Chromium plated angular Stop Cock with wall flange (Equivalent to Code No. 5053 & Model - Florentine of Jaquar or similar brand). PWD S&P Schedule, Page No.-6 Item No.-7-d-i,	9.00	815.00	Each	7335.00
58	Supplying, fitting and fixing pillar cock of approved make. a) (i) CP Pillar Cock - 15 mm. (Equivalent to Code No. 507 & Model - Tropical / Sumthing Special of ESSCO or similar brand). (P. No. - 45, Item. No. - 19(a), Pwd Sanitary Plumbing Schedule 2017)	2.00	555.00	Each	1110.00
59	Supplying, fitting and fixing PVC pipes of approved make of Schedule 80 (medium duty) conforming to ASTM D - 1785 and threaded to match with GI Pipes as per IS : 1239 (Part - I). with all necessary accessories, specials viz. socket, bend, tee, union, cross, elbo, nipple, long screw, reducing socket, reducing tee, short piece etc. fitted with holder bats clamps, including cutting pipes, making threads, fitting, fixing etc. complete in all respect including cost of all necessary fittings as required, jointing materials and two coats of painting with approved paint in any position above ground. (Payment will be made on the centre line measurements of total pipe line including all specials. No separate payment will be made for accessories, specials. Payment for painting will be made separately) (a) For Exposed Work PVC Pipes, 25 mm Page No.-12 Item No.-19-i(a), PWD, VOL-II, 2017-18	25.00	177.00	Mtr	4425.00
60	(a) (a) For Exposed Work PVC Pipes, 15 mm Page No.-12 Item No.-19-i(a), PWD, VOL-II, 2017-18	12.00	101.00	Mtr	1212.00
61	(b) For Concealed Work PVC Pipes, 15 mm Page No.-12 Item No.-19-i(b), PWD, VOL-II, 2017-18	10.00	137.00	Mtr	1370.00
62	Supplying and fitting fixing of gunmetal wheel valve of approved brand and make tested to 21 Kg per sq. cm. 25 mm dia(E5) PWD S&P Schedule, P-5 It-5,vii),	2.00	778.00	Each	1556.00
63	Supplying P.V.C. water storage tank of approved quality with closed top with lid (Black) - Multilayer (b) 1000 litre capacity PWD S&P Schedule, page.37,item no-6 (b)	1.00	5128.00	Each	5128.00
64	Labour for hoisting plastic water storage tank. (i) Upto 1500 litre capacity. (a) Upto 1st story from G.L. PWD S&P Schedule, page.37,item no-10 (i)(a)	1.00	96.00	Each	96.00
65	Labour for punching hole in plastic water storage tank upto 50 mm dia. PWD S&P Schedule, (P. No. - 38, Item. No. - 13	2.00	19.00	Each	38.00
66	Supply of UPVC pipes (B Type) & fittings conforming to IS-13592- 1992.(A) (i) Single Socketed 3 Meter Length, (b) 110 mm PWD S&P Schedule, Page No.-68 Item No. 23,(A)(i)(b)	25.00	292.00	Mtr	7300.00
67	(B) Fittings (i) Coupler, (b) 110 mm	9.00	85.00	Each	765.00
68	(ii) Plain Tee, (b) 110 mm	9.00	85.00	Each	765.00
69	(iii) Door Tee, (b) 110 mm	7.00	195.00	Each	1365.00
70	ix) Bend 45°, (b) 110 mm	9.00	89.00	Each	801.00
71	xi) Door Bend (T.S.), (b) 110 mm	6.00	147.00	Each	882.00
72	xvi) Pipe Clip, (b) 110 mm	20.00	21.00	Each	420.00
73	xvii) W.C. Connector (150 mm long) 125 X 110(W/WC Ring) 75 mm	4.00	142.00	Each	568.00

74	xxxi) Plain Floor Trap with Top tile & Strainer 75 mm	3.00	144.00	Each	432.00
75	L) Rubber Ring, (b) 110 mm	25.00	17.00	Each	425.00
76	C)Rubber Lubricant 500 ML	2.00	187.00	500 ML	374.00
77	D)Solvent Cement 250 ML	2.00	103.00	250 ML	206.00
78	Labour for fitting and fixing U.P.V.C. pipes for above ground work including cost of jointing materials etc. fitting and fixing all necessary specials, cutting pipes, cutting holes in total	25.00	84.00	Mtr	2100.00
79	Supplying, fitting & fixing UPVC pipes A- Type and fittings conforming to IS:13592-1992 with all necessary clamps nails, including making holes in walls, floor etc. cutting trenches	15.00	188.00	Mtr	2820.00
80	B) UPVC Fittings: c) Bend 87.5 degree (i) 75 mm. Dia.	4.00	84.00	Mtr	336.00
81	B) UPVC Fittings: d) Shoe (i) 75 mm. Dia.	4.00	78.00	Mtr	312.00
82	Constructing Inspection pit of inside measurement 600mm X 600mm X upto 600mm (depth) with 250 mm thick 1st. class brick work in cement mortar (1:4) on all sides, bottom of the pit consisting of 100 mm thick cement concrete (1:3:6) with stone chips over a layer of jhama brick flat soling, 15 mm thick (1:4) cement plaster to inside walls and out-side walls upto G.L. and 20 mm.thick (1:4) plaster to bottom of the pit, providing necessary invert with cement concrete (1:3:6) with stone chips as per direction, neat cement finishing to entire internal surfaces, top of the pit covered with 100 mm thick R.C.C. slab (1:1.5:3) with stone chips and necessary reinforcements upto 1% and shuttering including 6 mm thick cement plaster (1:4) in all external surfaces of the slab and one 560 mm dia. R.C.C. manhole cover of approved make supplied, fitted and fixed in the slab with necessary fittings, necessary earthwork in excavation in all sorts of soil, filling sides of the pit with earth and removing spoils after work complete in all respect with all costs of labour and materials. i) With Pakur variety (Other than SAIL/TATA/RINL). PWD S&P Schedule, S.P.87,Item No-1/(i), 7th Corrigenda Volume ii	2.00	7248.00	Each	14496.00
83	Construction of septic tank of different capacities as per approved drawing with 1st class brick work in cement mortar (1:4) including two 560 mm dia. R.C.C. manhole cover (heavy type) of approved make supplied, fitted and fixed in the 100mm thick R.C.C (1:1.5:3) top slab with necessary fittings, 20mm thick cement plaster (4 : 1) with neat cement finish to the internal surfaces and 15 mm thick cement plaster (4 : 1) to outside wall upto 200 mm below G.L floor finished with 25 mm thick grey artificial stone over 100 mm thick R.C.C(1:1.5:3) bottom slab including supplying, fitting and fixing all necessary specials, fittings, S.W. tees, C.I. foot rest etc. including excavation earth in all sorts of soil, shoring, bailing out and pumping out water as necessary, ramming, dressing the bed and refilling the sides of the tanks with earth, removing spoils, filling up the chamber with clear water, removing foreign materials from the chamber and including constructing attached inspection pit as per approved drawing and connecting all necessary pipes, joints etc. with internal plaster work and artificial stone flooring is to be done with admixture of water proofing compound @ 0.5% by weight of cement with all costs of labour and materials. (iii) For 30 users A) With Pakur variety. (JSW/JSPL/SHYAM/SRMB/ELECTROSTEEL/SSL) PWD S&P Schedule, S.P.88,Item No-3(iii)(A) 7th Corrigenda Volume ii	1.00	62821.00	Each	62821.00

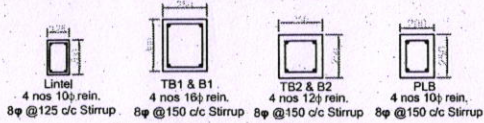
84	Construction of circular soak well 2.5 metre deep in all types of sandy soils with dry brick work upto 1.6 metre from the bottom having 150 mm intermediate cement brick work (1:4) band all round and cement brick work (1:4) upto 0.90 metre from top with 20mm thick cement plastering (1:4) to inside face upto the depth of cement brick work, 15mm thick cement plaster (1:4) on outer face from top of the well upto G.L. and 6 mm thick cement plaster (1:4) on top of the R.C.C. cover slab including filling bottom 1.00 metre of inside of the well with brick metal (50 mm to 63 mm size) including R.C.C. cover slab of 100 mm thick with cement conc (1:1.5:3) with stone chips with necessary reinforcement and shuttering including one 560 mm dia. R.C.C. manhole cover (heavy type) of approved make supplied, fitted and fixed in the cover slab with necessary fittings, making necessary arrangements for pipe connections, excavation of well including shoring, dewatering and removing the excess earth from the premises as per direction complete in all respect with all costs of labour and materials. With 250 mm thick dry brick work and 250 mm thick cement brick work (1:6) and 1.00m inside dia. (Other than SAIL/TATA/RINL) S.P.89,Item No-4 7th Corrigenda Volume ii	1.00	16621.00	Each	16621.00
85	Supplying, fitting and fixing towel rail with two brackets. (a) C.P. over brass (ii) 25 mm dia. and 600 mm long I No- 22 (a)(ii) PWD S&P Schedule, p No 82	6.00	430.00	Each	2580.00
86	Supplying, fitting and fixing cast iron raised rain proof tank cover 500 mm dia. with locking arrangements (weighing not less than 12 kg). PWD S&P Schedule, . page-37,item no -8	1.00	1263.00	Each	1263.00
87	Supplying, fitting and fixing bevelled edged mirror 5.5 mm thick silver red as per I.S. 3438 / 1965 together with brass C.P. hinges. (ii) 600 mm X 450 mm PWD S&P Schedule, P-81, It-15(ii)	2.00	484.00	Each	968.00
88	Supplying, fitting and fixing soap holder. (b) Fibre glass and plumbing work schedule P-82, It-18(b) Sanitary	8.00	58.00	Each	464.00
89	Supplying, fitting and fixing glass shelf with aluminium guard rails. (a) Ordinary type with 5.5 mm sheet glass (i) 450 mm X 125 mm Sanitary and plumbing work schedule P-81, It-16(a)(i)	6.00	341.00	Each	2046.00
Sub Total Of (A)					645,086.74
Add S.G.S.T. @ 9%					78,647.90
Add C.G.S.T. @ 9%					78,647.90
					<b>1,031,161.38</b>
Add L.W.C. @ 1%					10,311.61
					<b>1,041,472.99</b>
Add Contengency @3%					30,934.84
Total					<b>1,072,407.83</b>
Say Rs.					<b>1,072,408.00</b>
Rupees Ten Lakh SeventyTwo Thousand Four Hundred Eight Only					

*Jaya Dhar Mujumdar*  
24/09/25  
**Sub Assistant Engineer**  
Kamarhati Municipality

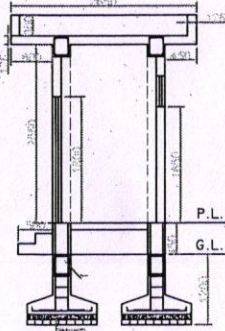
*Laxmi*  
31/11/25  
**ASSISTANT ENGINEER**  
KAMARHATI MUNICIPALITY

*[Signature]*  
**Chairman**  
Kamarhati Municipality

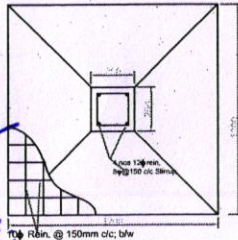
**VETTED**  
*[Signature]*  
19.11.25  
**Superintending Engineer (C)**  
W & S (GAP) Sector  
K. M. D. A.



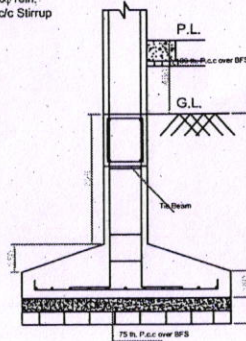
Typical Beam Details



DETAILS OF WALL SECTION A-A



DETAILS OF FOUNDATION (SCALE 1:25)



Jay Bah Nirbhay  
 Sub Assistant Engineer  
 Kamahati Municipality

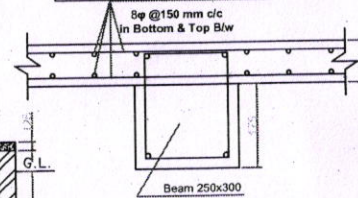
Area Statement

Builtup Area - 12.92 Sq.m.  
Roof Area - 23.78 Sq.m.

MKD.	Size	Reinforcement		Stirrup
		Support	Span	
TB1&B1	250x300	3#16 $\phi$	2#16 $\phi$ 2#16 $\phi$	3#16 $\phi$ 8 $\phi$ @ 150c/c
TB2&B2	200x250	3#12 $\phi$	2#12 $\phi$ 2#12 $\phi$	3#12 $\phi$
All Column	250x250	4#12 $\phi$		8 $\phi$ @ 150c/c

Door - Window Shedule

MKD.	Size
D	750x1800
W	600x450



Slab Beam Details

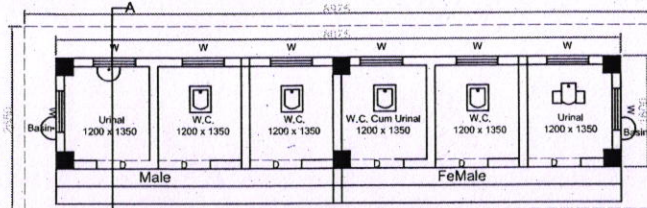
Model Plan No. - CT-3

GENERAL NOTES

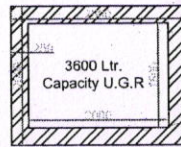
1. ALL DIMENSIONS ARE IN MM.
  2. OUTER WALL IS 125 MM.TH. WITH 1ST CLASS BRICKS IN CEMENT MORTER(6:1) AND PARTION WALL IS 125MM. TH. IN CEMENT MORTER(4:1)
  3. GRADE OF CONCRETE M-20 ORDINARY CEMENT CONCRETE (MIX1:1.5:3)
  4. GRADE OF STEEL:FE-510
  5. 25MM. TH D.P.C(MIX1:2:4) WILL BE APPLIED
  6. PLASTERING:  
OUTSIDE-15MM. TH. IN CEMENT MORTER(1:6)  
INSIDE-15MM. TH. IN CEMENT MORTER(1:6)  
CEILING-10MM. TH. CEMENT MORTER(1:4)
- BEARING CAPACITY OF SOIL AT DEPTH 1M BELOW G.L. = 110 KN/M2, WHICH MUCH BE EXPLODED BEFORE CONSTRUCTION. REDRAWING & REDESIGN IS NESSESARY IS BEARRING CAPACITY OF SOIL IS POOR THEN ASSUMED.

Signature Of Authority

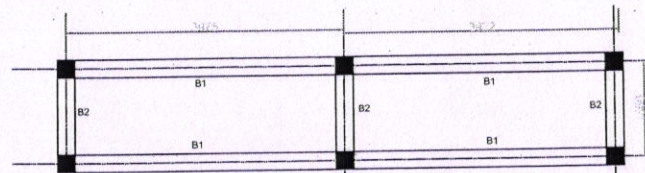
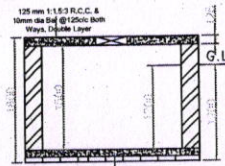
ASSISTANT ENGINEER  
 KAMARHATI MUNICIPALITY



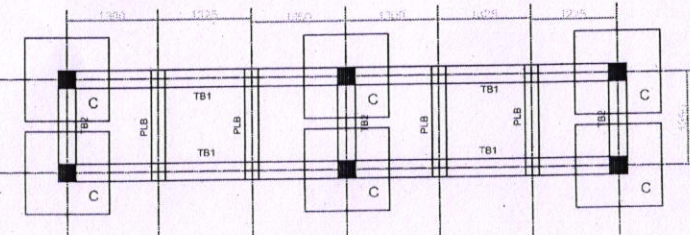
Ground Floor Plan



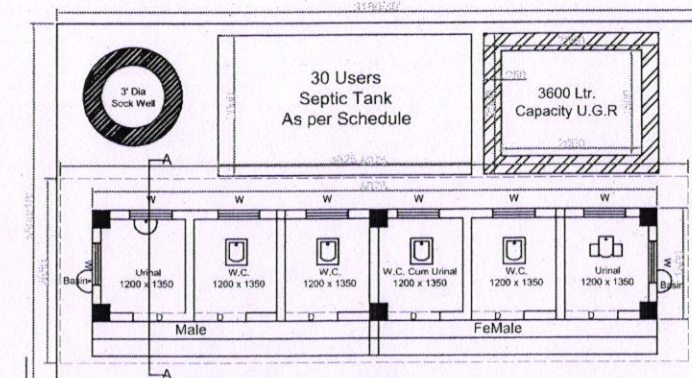
Under Ground Reservoir Details



Slab Beam Details



Foundation & tie Beam Details



Sample Site Plan For CT Plan 4