

KAMARHATI MUNICIPALITY

Construction of the Public Toilet Block at 2 no. Railway Gate under ward Ward no.32 within Kamahati Municipality

No. Of seat - Male - (W.C. -1 + Urinal -1) & Female - (W.C. -1 + Urinal -0) = **Total (W.C. -2 & Urinal -1)**

Rate As per PWD Building Works Schedule (Volume 1) With effect from 01.11.2017

Sl. No.	Item Description & Item No.						Quantity	Rate	Unit	Amount
	Details	Side	No.	L	B	H	QNTY.			
1	Earth work in excavation of foundation trenches or drains, in all sorts of soil (including mixed soil but excluding laterite or sandstone) including removing, spreading or stacking the spoils within a lead of 75 m. as directed. The item includes necessary trimming the sides of trenches, levelling, dressing and ramming the bottom, bailing out water as required complete. (a) Depth of excavation not exceeding 1,500 mm. PWD Building Works schedule Page - 1, Item -2.a						11.41	11,927.00	%Cum	1,360.87
	Column		4	1.200	1.2	1	5.760			
	Tie Beam		1	7.35	0.35	0.375	0.960			
	Reservior		1	2.3	1.7	1.2	4.690			
							11.410			
2	Single Brick Flat Soling of picked jhama bricks including ramming and dressing bed to proper level and filling joints with local sand. PWD Building Works schedule, Page- 14, Item - 1 (Corri. Page-01, Date-04-06-2018)						15.33	361.00	Sqm	5,534.13
	Column		4	1.200	1.2		5.760			
	Tie Beam		1	7.35	0.25		1.840			
	Parti beam		1	1.35	0.125		0.170			
	Floor		1	1.5	1.35		2.030			
	Floor		1	1.2	1.35		1.620			
	Reservior		1	2.3	1.7		3.910			
							15.330			
3	Supplying and laying Polythene Sheet (150gm / sq.m.) over damp proof course or below flooring or roof terracing or in foundation or in foundation trenches. PWD Building Works schedule, Page -47, Item -3						18.75	24.00	Sqm	450.00
	Open Space		1	5.5	1.5		8.250			
	Approch Road		1	7	1.5		10.50			
							18.750			
4	Cement concrete with graded jhama khoa (30 mm size) excluding shuttering In ground floor and foundation. (a) 1:3:6 proportion. PWD Building Works schedule, Page -23, Item -B.1.a, (Corri. Page-09, Date-04-06-2018) Rate Analysis						3.21	4,628.87	Cum	14,858.67
	Column		4	1.20	1.20	0.10	0.580			
	Floor		1	1.50	1.35	0.10	0.200			
	Floor		1	1.20	1.35	0.10	0.160			
	Reservior		1	2.30	1.70	0.10	0.390			
	Open Space		1	5.50	1.50	0.10	0.830			
	Approch Road		1	7.0	1.5	0.10	1.050			
							3.210			

Sl. No.	Item Description & Item No.						Quantity	Rate	Unit	Amount
5	25mm. thick damp proof course with cement concrete with stone chips (1:1.5:3) [with graded stone aggregate 10 mm nominal size] and admixture of water proofing compound as per manufacturer's specification followed by two coat of polymer based paint, (1st coat after 4 to 5 days of concrete laying and 2 nd coat just before brick masonry work) as directed (cost of water proofing compound & polymer based paint to be paid separately).(Chequering not required over concrete or painted surface). [Note: - Waterproofing as per item 9, polymer based paint as per item 8 (a) of subhead C of Section (C).PWD Building Works schedule, Page -47, Item -1 (Rate Analysis)						0.93	184.28	Sqm	171.38
		1	7.45	0.125		0.930				
									contd....2	
	P-2									
6	Brick work with 1st class bricks in cement mortar (1:4) (a) In foundation and plinth PWD Building Works schedule, Page -15, Item-7.a (Rate Analysis)						3.60	5,613.36	Cum	20,208.10
	GL 2 PL	1	7.35	0.250	0.450	0.830				
	Front Stair	1	4.625	0.25	0.3	0.350				
		1	4.625	0.25	0.15	0.170				
	Reservior	1	7.5	0.25	1.2	2.250				
						3.600				
7	125 mm. thick brick work with 1st class bricks in cement mortar (1:4) in ground floor. PWD Building Works schedule, Page - 16, Item - 16 (Corri. Page- 03. Date-04-06-2018) (Rate						21.56	728.47	Sqm	15,705.81
	Wall	1	8.700		2.375	20.660				
		1	1.350		0.175	0.240				
	Parapet	1	13.000		0.3	3.900				
	Less Door	-2	0.750		1.8	-2.700				
	Less Window	-4	0.450		0.3	-0.540				
						21.560				
8	Earth work in filling in foundation trenches or plinth with good earth, in layers not exceeding 150 mm. including watering and ramming etc. layer by layer complete. (Payment to be made on the basis of measurement of finished quantity of work). (a) With earth obtained from excavation of foundation. PWD Building Works schedule, Page - 1, Item -3.a						7.53	7,754.00	%Cum	583.88
	2/3rd of Earth work		0.66	11.41		7.53				
9	(A) Filling in foundation or plinth by silver sand in layers not exceeding 150 mm as directed and consolidating the same by thorough saturation with water, ramming complete including the cost of supply of sand. (payment to be made on measurement of finished quantity) PWD Building Works schedule, Page - 2, Item -4.a						1.27	93,621.00	%Cum	1,188.99
		1	2.575	1.1	0.45	1.27				

Sl. No.	Item Description & Item No.						Quantity	Rate	Unit	Amount
10	Hire and labour charges for shuttering with centering and necessary staging upto 4 m using approved stout props and thick hard wood planks of approved thickness with required bracing for concrete slabs, beams and columns, lintels curved or straight including fitting, fixing and striking out after completion of works (upto roof of ground floor) (f) 25 mm to 30 mm shuttering without staging in foundation PWD Building Works schedule, Page -42, Item- 36.f						9.20	209.00	Sqm	1,922.80
	Foundation	16	1.00		0.15	2.40				
	Tie Beam	1	9.35		0.3	2.81				
	Inside	1	7.35		0.3	2.21				
	Parti beam	2	1.35		0.25	0.68				
	Coumn	16	0.25		0.275	1.10				
	9.200									
11	Hire and labour charges for shuttering with centering and necessary staging upto 4 m using approved stout props and thick hard wood planks of approved thickness with required bracing for concrete slabs, beams and columns, lintels curved or straight including fitting, fixing and striking out after completion of works (upto roof of ground floor)(a) 25 mm to 30 mm thick wooden shuttering as per decision & direction of Engineer-In-Charge. PWD Building Works schedule, Page -42, Item- 36.a						28.68	335.00	Sqm	9,607.80
	Coumn	16	0.25		2.375	9.500				
	Roof Beam	1	9.35		0.175	1.640				
	Roof Beam	1	7.35		0.175	1.290				
	Lintel	2	3.075		0.2	1.230				
										contd....3
	P-3									
	Lintel btm	2	0.750		0.125	0.190				
	slab with b btm	1	3.975	2.65		10.530				
	Slab Side	1	13.250		0.125	1.660				
	Reservior	1	1.8	1.2		2.160				
		1	4		0.12	0.480				
	28.680									
12	Ordinary Cement concrete (mix 1:1.5:3) with graded stone chips (20 mm nominal size) excluding shuttering and reinforcement,if any, in ground floor as per relevant IS codes. a) Pakur Variety /Chandil Variety PWD Building Works schedule, p-26 Item 10 a (Rate Analysis)						4.48	5,863.13	Cum	26,266.82
	Colm foot	4	1	1	0.15	0.600				
	$4*0.1/3*(1*1+0.3*0.3+1*0.3)=.185$									0.190
	Tool Column	4	0.3	0.3	0.275	0.100				
	Column	4	0.25	0.25	2.375	0.590				
	Tie Beam	1	8.85	0.25	0.3	0.660				
	Parti beam	1	1.6	0.2	0.25	0.080				
	Lintel	1	2.575	0.125	0.2	0.060				
	Slab Beam	1	8.85	0.25	0.175	0.390				
	Slab	1	3.975	2.65	0.125	1.320				
	Reservior	1	2.3	1.7	0.125	0.490				

Sl. No.	Item Description & Item No.							Quantity	Rate	Unit	Amount
	4.480										
13	Reinforcement for reinforced concrete work in all sorts of structures including distribution bars, stirrups, binders etc initial straightening and removal of loose rust (if necessary), cutting to requisite length, hooking and bending to correct shape, placing in proper position and binding with 16 gauge black annealed wire at every intersection, complete as per drawing and direction. (a) For works in foundation and upto roof of ground floor/upto 4 m. (i) Tor steel/Mild Steel , JSPL/SWAYN/ELETRO/STEEL PWD Building Works schedule, Page - 43, Item - 40.a.i.1(Corri. 10th Page-01, Date-23-01-2020) (Rate Analysis)							0.394	55,194.51	M.T.	21,746.64
	Footing	4	14	0.95	0.617	0.001	0.033				
	Column	4	4	4.175	0.89	0.001	0.059				
	Stirup	4	22	0.85	0.39	0.001	0.029				
	Tie beam	2	4	3.225	1.56	0.001	0.040				
		2	4	1.75	0.89	0.001	0.012				
	Stirup	1	48	1.05	0.39	0.001	0.020				
	PLBeam	1	4	1.75	0.89	0.001	0.006				
	Stirup	1	8	0.750	0.39	0.001	0.002				
	Lintel	1	4	3.125	0.617	0.001	0.008				
	Stirup	1	18	0.650	0.39	0.001	0.005				
	Roof Beam	2	4	3.225	1.56	0.001	0.040				
		2	4	1.75	0.89	0.001	0.012				
	Stirup	1	48	1.05	0.39	0.001	0.020				
	Slab	2	24	2.55	0.39	0.001	0.048				
	less l/3	-1	8	0.85	0.39	0.001	-0.003				
		1	15	3.87	0.39	0.001	0.023				
	less l/3	-1	5	1.29	0.39	0.001	-0.003				
	UGR	1	19	1.65	0.39	0.001	0.012				
		1	14	2.25	0.39	0.001	0.012				
	Lapping	15	1	0.8	1.56	0.001	0.019				
							0.3940				
14	Artificial stone in floor, dado, staircase etc with cement concrete (1:2:4) with stone chips, laid in panels as directed with topping made with ordinary or white cement (as necessary) and marble dust in proportion (1:2) including smooth finishing and rounding off corners including raking out joints or roughening of concrete surface and application of cement slurry before flooring..... 25 mm. thick For roofing PWD Building Works schedule, P-48, It-6.ii (Rate Analysis)							27.99	265.95	Sqm	7,443.94
	roof		1	3.85	2.4		9.24				
	Open Space		1	5.5	1.5		8.25				
	Approch Road		1	7	1.5		10.50				
							27.990				
	contd....4										
	P-4										
15	Neat cement punning about 1.5mm thick in wall, dado, window sill, floor etc. NOTE:Cement 0.152 cu.m per100 sq.m. PWD Building Works schedule, P-192, It. No. 15 (Rate Analysis)							19.66	32.75	Sqm	643.87

Sl. No.	Item Description & Item No.							Quantity	Rate	Unit	Amount
	Below Plinth		1	3.975	0.45	1.790					
			2	1.6	0.45	1.440					
	Reservior		1	6	1.2	7.200					
			2	1.8	1.2	4.320					
			1	2.3	1.7	3.910					
			1	8	0.125	1.000					
						19.660					
16	Labour for Chipping of concrete surface before taking up Plastering work.PWD Building Works schedule, P-192, It-1							38.53	21.00	Sqm	809.13
	Lintel side		2	3.975	0.2	1.590					
	lintel btm		2	0.750	0.125	0.190					
	Beam		2	10.65	0.175	3.730					
	Beam		1	10.65	0.25	2.660					
	Slab bottom		1	3.975	2.65	10.530					
	Slab side		1	13.250	0.125	1.660					
	For roof treatment		1	3.725	2.4	8.940					
	Reservior		2	1.8	1.2	4.320					
			1	2.3	1.7	3.910					
			1	8	0.125	1.000					
						38.530					
17	Plaster (to wall, floor, ceiling etc.) with sand and cement mortar including rounding off or chamfering corners as directed and raking out joints including throating, nosing and drip course, scaffolding/staging where necessary (Ground floor).[Excluding cost of chipping over concrete surface] (i) With 1:6 cement mortar (c) 15 mm thick plaster PWD Building Works schedule, P-189 It- No. 1 (Rate Analysis)							45.65	148.53	Sqm	6,780.39
	Below plinth		1	6.275	0.45	2.820					
	Outer wall		1	3.075	2.55	7.840					
	Outer wall		1	6.275	0.60	3.770					
	Deduction		-2	0.750	1.95	-2.930					
	Iner Wall		1	5.700	0.75	4.280					
	Iner Wall		1	5.100	0.75	3.830					
	Parapet wall		1	13.25	0.725	9.610					
	Reservior		1	6	1.2	7.200					
			2	1.8	1.2	4.320					
			1	2.3	1.7	3.910					
			1	8	0.125	1.000					
						45.650					
18	Plaster (to wall, floor, ceiling etc.) with sand and cement mortar including rounding off or chamfering corners as directed and raking out joints including throating, nosing and drip course, scaffolding/staging where necessary (Ground floor).[Excluding cost of chipping over concrete surface] (ii) With 1:4 cement mortar (c) 10 mm thick plaster							10.53	130.53	Sqm	1,374.48
	Slab bottom		1	3.975	2.65	10.530					

Sl. No.	Item Description & Item No.	Quantity	Rate	Unit	Amount
19	Supplying, fitting and fixing fibre reinforced polymer (FRP) Composite door frame as per approved section with glass fibre reinforced plastic moulded skins and a special sandwich core, so as to impart monolithic composite structure as per approved technology of Department of Science and Technology (DST) to satisfy IS: 4020 door testing performance criteria.. (i)	8.70	497.00	Mtr	4,323.90
	2 4.35 8.7				
					contd....5
	P-5				
20	Supplying, fitting & fixing fibre reinforced polymer (FRP) Composite door shutters as per approved design with glass fibre reinforced plastic moulded skins and a special sandwich core, so as to impart monolithic composite structure as per approved technology of Department of Science and Technology (DST) to satisfy IS:4020 door testing performance criteria. In ground floor.	2.30	2,581.00	Sqm	5,936.30
	2 1.73 0.66 2.3				
21	Anodised aluminium barrel / tower / socket bolt (full covered) of approved manufactured from extruded section conforming to I.S. 204/74 fitted and fixed with cadmium plated screws . (vii) 225mm long x 10mm dia. bolt. PWD Building Works schedule, P-144, It No. 26 (vii)	2	84.00	Each	168.00
	2 1.0 2				
22	Iron butt hinges of approved quality fitted and fixed with steel screws, with ISI mark. (viii) 100mm X 75mm X 3.50mm. PWD Building Works schedule, P-140, It No. -5 (viii)	6	66.00	Each	396.00
	2 3 6				
23	Anodised aluminium decorative handle (hexagonal / fluted) of approved quality fitted and fixed complete. (i) 150mm plate x 10mm dia rod x 12mm hexagonal/fluted. PWD Building Works schedule, Page -146 . Item no-31,(i)	4	87.00	Each	348.00
	2 2 4				
24	Iron hasp bolt of approved quality fitted and fixed complete (oxidised) with 16mm dia rod with concrete bolt and round fitting. .b)250mm long. PWD Building Works schedule, Page -141 . Item no-10 b)	2.0	159.00	Each	318.00
	2 1 2				
25	Rendering the Surface of walls and ceiling with White Cement base WATER PROOF wall putty of approved make & brand.(1.5 mm thick) In Ground Floor PWD Building Works schedule, PWD, P-198, I - 5	52.95	122.00	Sqm	6,459.90
	Same as Plaster Item - Plinth plaster 52.95				
26	(b) Priming one coat on timber or plastered surface with synthetic oil bound primer of approved quality including smoothening surfaces by sand papering etc. PWD Building Works schedule, Page -200 . Item no- 1 (b)	52.95	38.00	Sqm	2,012.10
	Same as Plaster Item - Plinth plaster 52.95				

Sl. No.	Item Description & Item No.							Quantity	Rate	Unit	Amount
27	(A) Painting with best quality synthetic enamel paint of approved make and brand including smoothening surface by sand papering etc. including using of approved putty etc. on the surface, if necessary. Page -200 . Item no- 1 (b) (a) On timber or plastered surface : With super gloss (hi-gloss) -							52.95	81.00	Sqm	4,288.95
	Same as Plaster Item - Plinth plaster 52.95										
28	(a) M.S.or W.I. Ornamental grill of approved design joints continuously welded with M.S, W.I. Flats and bars of windows, railing etc. fitted and fixed with necessary screws and lugs in ground floor.. (i) Grill weighing above 10 Kg./sq.mtr and up to 16 Kg./sq. mtr. PWD Building Works schedule, P-104 Item-13 A (i) (3rd Corrigendam Page No 91)							0.46	9,888.00	Qntl	4,548.48
	Grill	4	0.6	0.45	0.16	0.17					
	Box for pump	5	0.6	0.6	0.16	0.29					
							0.46				
										contd...6	
	P-6										
29	a) Priming one coat on steel or other metal surface with synthetic oil bound primer of approved quality including smoothening surfaces by sand papering etc. PWD Building Works schedule, P/200 Item-1(a)							2.88	29.00	Sqm	83.52
		4	0.6	0.45	1.08						
		5	0.6	0.6	1.8						
							2.88				
30	(A) Painting with best quality synthetic enamel paint of approved make and brand including smoothening surface by sand papering etc. including using of approved putty etc. on the surface, if necessary : (b) On steel or other metal surface : (iv) Two coats (with any shade except white) PWD Building Works schedule, P-200 Item-2(b)(iv)							2.88	79.00	Sqm	227.52
		4	0.6	0.45	1.08						
		5	0.6	0.6	1.8						
							2.88				

Sl. No.	Item Description & Item No.	Quantity	Rate	Unit	Amount
33	Supplying profiles of required section made of Aluminium Alloy Extrusions conforming to IS: 732-1983 and IS: 1285- 1975; Anodized (with required film thickness and specified colour / natural) matt finished conforming to IS: 1868-1983 for fabrication of composite door, sliding & casement windows, partitions, formed of basic sections of any ISI embossed / certified make and brand as per direction of Engineer - In- Charge. (Payment will be made on finished length of the work). (A) In 10-12 Micron thickness Anodizing film l) Natural white h) Louvered window. i) Top, bottom and side member. PWD Building Works schedule, PWD, P-233, I- 1(h) i	8.40	183.00	M	1,537.20
		4	2.1		8.400
34	ii) Louvered Section.	7.20	658.00	M	4,737.60
		12.00	0.60		7.20
35	iii) Cleat angle (Non-anodized).	6.48	263.00	M	1,704.24
		12.00	0.54		6.48
36	Labour charge for fabrication and installation of composite door, window, partitions made from anodized extruded alloy aluminium sections for the following units:- (A) Glazed aluminium sliding windows made of extruded and anodized alloy aluminium sections, fabrications, including cutting to proper shape and size, drilling and aligning of window shutter frame fitted with in built locking arrangements, sliding rollers and other necessary fittings, fixture, adhesives and joineries along with extruded neoprene or EPDM gasketing in between window frame and masonry work (walls, column, beam.lintels etc.) as well as between glass and shutter frame for fixing glass and Polysulphide sealant and in between shutter and window frame where necessary including cutting to requisite size and fixing glass as per drawing, specification and direction of EIC. The rate includes the hire charge of all tools and plants, including all incidental charges, adhesive, joineries such as screw, cleat angle etc. but excluding the cost of extruded aluminium sections, glass, neoprene / EPDM gasket, locking arrangement and rollers. v) Louvered window. PWD Building Works schedule SOR, PWD, P-239, I- 2 (v)	1.08	730.00	Sqm	788.40
		4	0.6	0.45	1.080
37	Supplying bubble free float glass of approved make and brand	1.08	585.00	Sq.M.	631.80
		4	0.6	0.45	1.080
38	Painting block letters or digits in Black Japan or any approved paint as per direction. e) Size above 7.5 cm. and upto 10 cm. PWD Building Works schedule, P-268, It-17(e)	450.00	12.00	Each	5,400.00
39	Supplying and Planting of different plant / trees (Supplying well grown plants bushy and healthy, minimum height as specified i.e. exposed height including all leads & lift, carriage, handling, manuring, applying presticide and fertilizer etc. . i) Furcaria veriegated 10-12 leaves in height 20-30cm in earthen	4.00	162.00	Each	648.00
40	x) Ficus blakii (F. Vivicon) well branched (Bushy) of height 120cm - 135 cm in earthen pot of size 30cm. PWD Building Works schedule, Page -261, It- 9 (x)	3.00	187.00	Each	561.00

Sl. No.	Item Description & Item No.	Quantity	Rate	Unit	Amount
41	xxvi) Areca Palm 4 - 5 suckers of height 90 cm to 105 cm in earthen pots of size 25 cm. PWD Building Works schedule, Page -261, It- 9 (xxvi)	3.00	127.00	Each	381.00
42	Supplying, fitting and fixing Anglo-Indian W.C. in white glazed vitreous china ware of approved make complete in position with necessary bolts, nuts etc. a) With 'P' trap (with vent) PWD S&P Schedule, page-79, item no -3 (a)	2.00	3,104.00	Each	6,208.00
43	Supplying, fitting and fixing Closet seat of approved make with lid and C.P.hinges, rubber buffer and brass screws complete .(b) Anglo Indian (i) Plastic (hallow type) White PWD S&P Schedule, page-81,item no 10.b.i	2.00	380.00	Each	760.00
44	Supplying, fitting and fixing Flat back urinal (half stall urinal) in white vitreous chinaware of approved make in position with brass screws on 75 mm X 75 mm X 75 mm wooden blocks complete (ii) 470 mm X 280 mm X 340 mm PWD S&P Schedule, page.80,item no-6/(ii)	1.00	945.00	Each	945.00
45	Supplying, fitting and fixing 10 litre P.V.C. low-down cistern conforming to I.S. specification with P.V.C. fittings complete,C.I. brackets including two coats of painting to bracket etc. PWD S&P Schedule, Page No.-36 Item No.-2,	2.00	1,015.00	Nos	2,030.00
46	Supplying,fitting and fixing 32 mm dia. Flush Pipe of approved make with necessary fixing materials and clamps complete. i) Polythene Flush Pipe PWD S&P Schedule, Page no 81. Item no. 11(i)	2.00	155.00	Each	310.00
47	Supplying, fitting and fixing urinal flush pipe fittings of approved brand. (a) C.P. urinal flush pipe fittings range of one PWD S&P Schedule, S.P.81,item-12/a	1.00	414.00	Each	414.00
48	Supplying, fitting and fixing white vitreous china best quality approved make wash basin with C.I. brackets on 75 mm X 75 mm wooden blocks, C.P. waste fittings of 32 mm dia., mending good all damages and painting the brackets with two coats of approved paint.	1.00	2,208.00	Each	2,208.00
49	Supplying,fitting and fixing approved brand P.V.C. CONNECTOR white flexible, with both ends coupling with heavy brass C.P. nut, 15 mm dia., (iii) 600 mm long PWD S&P Schedule, Page No.-43 Item No.-9-iii PWD,	4.00	107.00	Each	428.00
50	Supplying,fitting and fixing approved brand 32 mm dia.P.V.C. waste pipe, with PVC coupling at one end fitted with necessary clamps. (iv) 1050 mm long each PWD S&P Schedule, Page No.-43 Item No. 10-iv	2.00	91.00	Each	182.00
51	(f) Hand Shower(Health Faucet) with 1mtr Fexible Tube with Wall Hook(Equivalent to Code No.573 & Model -ALLIED of Jaquar or similar). PWD S&P Schedule, Page No.-3 Item No.- 3 f,	2.00	1,251.00	Each	2,502.00
52	(a) (i) Chromium plated Bib Cock short body (Equivalent to Code No. 511 & Model - Tropical / Sumthing Special of ESSCO or similar brand). PWD S&P Schedule, Page No.-6 Item No.-7-a-i	2.00	539.00	Each	1,078.00

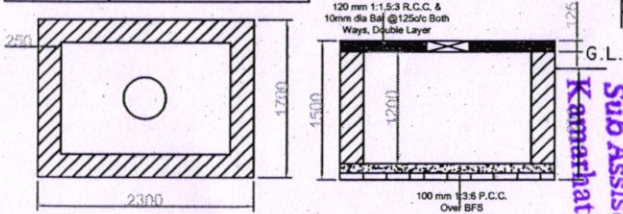
Sl. No.	Item Description & Item No.	Quantity	Rate	Unit	Amount
53	(b) (i) Chromium plated Stop Cock (Equivalent to Code No. 513(A) & 513(B) & Model - Tropical / Sumthing Special of ESSCO or similar PWD S&P Schedule, Page No.-6 Item No.-7-b-i	1.00	493.00	Each	493.00
					contd...8
	P-8				
54	Chromium plated angular Stop Cock with wall flange (Equivalent to Code No. 5053 & Model - Florentine of Jaquar or similar brand). PWD S&P Schedule, Page No.-6 Item No.-7-d-i,	3.00	815.00	Each	2,445.00
55	Supplying, fitting and fixing pillar cock of approved make. a) (i) CP Pillar Cock - 15 mm. (Equivalent to Code No. 507 & Model - Tropical / Sumthing Special of ESSCO or similar brand). (P. No. - 45, Item. No. - 19(a)i, Pwd Sanitary Plumbing Schedule 2017)	1.00	555.00	Each	555.00
56	Supplying, fitting and fixing PVC pipes of approved make of Schedule 80 (medium duty) conforming to ASTM D - 1785 and threaded to match with GI Pipes as per IS : 1239 (Part - I). with all necessary accessories, specials viz. socket, bend, tee, union, cross, elbo, nipple, long screw, reducing socket, reducing tee, short piece etc. fitted with holder bats clamps, including cutting pipes, making threads, fitting, fixing etc. complete in all respect including cost of all necessary fittings as required, jointing materials and two coats of painting with approved paint in any position above ground. (Payment will be made on the centre line measurements of total pipe line including all specials. No separate payment will be made for accessories, specials. Payment for painting will be made separately) (a) For Exposed Work PVC Pipes, 25 mm Page No.-12 Item No.-19-i(a), PWD,VOL-II, 2017-18	15.00	177.00	Mtr	2,655.00
57	(a) (a) For Exposed Work PVC Pipes, 15 mm Page No.-12 Item No.-19-i(a), PWD,VOL-II, 2017-18	6.00	101.00	Mtr	606.00
58	(b) For Concealed Work PVC Pipes, 15 mm Page No.-12 Item No.-19-i(b), PWD,VOL-II, 2017-18	7.00	137.00	Mtr	959.00
59	Supplying and fitting fixing of gunmetal wheel valve of approved brand and make tested to 21 Kg per sq. cm. 25 mm dia(E5) PWD S&P Schedule, P-5 It-5,vii),	2.00	778.00	Each	1,556.00
60	Supplying P.V.C. water storage tank of approved quality with closed top with lid (Black) - Multilayer (b) 1000 litre capacity PWD S&P Schedule, page.37 item no-6 (b)	1.00	5,128.00	Each	5,128.00
61	Labour for hoisting plastic water storage tank. (i) Upto 1500 litre capacity. (a) Upto 1st story from G.L. PWD S&P Schedule, page.37 item no-10 (i)(a)	1.00	96.00	Each	96.00
62	Labour for punching hole in plastic water storage tank upto 50 mm dia. PWD S&P Schedule, (P. No. - 38, Item. No. - 13	2.00	19.00	Each	38.00

Sl. No.	Item Description & Item No.	Quantity	Rate	Unit	Amount
63	Supply of UPVC pipes (B Type) & fittings conforming to IS-13592-1992.(A) (i) Single Socketed 3 Meter Length, (b) 110 mm PWD S&P Schedule, Page No.-68 Item No. 23,(A)(i)(b)	15.00	292.00	Mtr	4,380.00
64	(B) Fittings (i) Coupler, (b) 110 mm	5.00	85.00	Each	425.00
65	(ii) Plain Tee, (b) 110 mm	5.00	85.00	Each	425.00
66	(iii) Door Tee, (b) 110 mm	4.00	195.00	Each	780.00
67	ix) Bend 45°, (b) 110 mm	5.00	89.00	Each	445.00
68	xi) Door Bend (T.S.), (b) 110 mm	4.00	147.00	Each	588.00
69	xvi) Pipe Clip, (b) 110 mm	15.00	21.00	Each	315.00
70	xvii) W.C. Connector (150 mm long) 125 X 110(W/WC Ring) 75 mm	2.00	142.00	Each	284.00
71	xxxi) Plain Floor Trap with Top tile & Strainer 75 mm	3.00	144.00	Each	432.00
					contd...9
	P-9				
72	L) Rubber Ring, (b) 110 mm	15.00	17.00	Each	255.00
73	C)Rubber Lubricant 500 ML	1.00	187.00	500 ML	187.00
74	D)Solvent Cement 250 ML	1.00	103.00	250 ML	103.00
75	Labour for fitting and fixing U.P.V.C. pipes for above ground work including cost of jointing materials etc. fitting and fixing all necessary specials, cutting pipes, cutting holes in total pipeline including specials. (B) Under ground, (ii) 110 mm dia. PWD S&P Schedule, (P. - 74, Item. No. - 24 (B)	15.00	84.00	Mtr	1,260.00
76	Supplying, fitting & fixing UPVC pipes A- Type and fittings conforming to IS:13592-1992 with all necessary clamps nails, including making holes in walls, floor etc. cutting trenches in any soil through masonry concrete structures etc if necessary and mending good damages including joining with jointing materials (Spun Yarn, Valamoid/Bitumen/M-Seal etc) complete. A) UPVC Pipes: (i) 75 mm. Dia. (P. - 212, Item. No. - 21 (A)(i) , (B),(c),(i) & (B), (d),(i), Pwd volume-i, 2017)	10.00	188.00	Mtr	1,880.00
77	B) UPVC Fittings: c) Bend 87.5 degree (i) 75 mm. Dia.	2.00	84.00	Mtr	168.00
78	B) UPVC Fittings: d) Shoe (i) 75 mm. Dia.	2.00	78.00	Mtr	156.00
79	Constructing Inspection pit of inside measurement 600mm X 600mm X upto 600mm (depth) with 250 mm thick 1st. class brick work in cement mortar (1:4) on all sides, bottom of the pit consisting of 100 mm thick cement concrete (1:3:6) with stone	2.00	7,248.00	Each	14,496.00

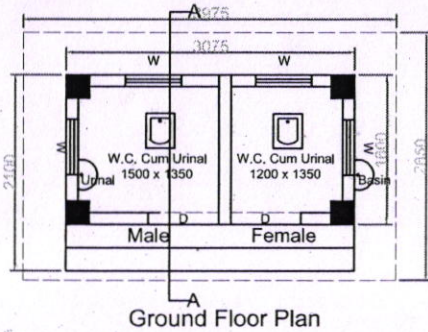
Sl. No.	Item Description & Item No.	Quantity	Rate	Unit	Amount
80	<p>Construction of septic tank of different capacities as per approved drawing with 1st class brick work in cement mortar (1:4) including two 560 mm dia. R.C.C. manhole cover (heavy type) of approved make supplied, fitted and fixed in the 100mm thick R.C.C (1:1.5:3) top slab with necessary fittings, 20mm thick cement plaster (4 : 1) with neat cement finish to the internal surfaces and 15 mm thick cement plaster (4 : 1) to outside wall upto 200 mm below G.L floor finished with 25 mm thick grey artificial stone over 100 mm thick R.C.C(1:1.5:3) bottom slab including supplying, fitting and fixing all necessary specials, fittings, S.W. tees, C.I. foot rest etc. including excavation earth in all sorts of soil, shoring, bailing out and pumping out water as necessary, ramming, dressing the bed and refilling the sides of the tanks with earth, removing spoils, filling up the chamber with clear water, removing foreign materials from the chamber and including constructing attached inspection pit as per approved drawing and connecting all necessary pipes, joints etc. with internal plaster work and artificial stone flooring is to be done with admixture of water proofing compound @ 0.5% by weight of cement with all costs of labour and materials.</p> <p>(ii) For 20 users A) With Pakur variety. (JSW/JSPL/SHYAM/SRMB/ELECTROSTEEL/SSL) PWD S&P Schedule, S.P.88,Item No-3(ii)(A) 7th Corrigenda Volume ii</p>	1.00	48,162.00	Each	48,162.00
					contd...10
	P-10				
81	<p>Construction of circular soak well 2.5 metre deep in all types of sandy soils with dry brick work upto 1.6 metre from the bottom having 150 mm intermediate cement brick work (1:4) band all round and cement brick work (1:4) upto 0.90 metre from top with 20mm thick cement plastering (1:4) to inside face upto the depth of cement brick work, 15mm thick cement plaster (1:4) on outer face from top of the well upto G.L. and 6 mm thick cement plaster (1:4) on top of the R.C.C. cover slab including filling bottom 1.00 metre of inside of the well with brick metal (50 mm to 63 mm size) including R.C.C. cover slab of 100 mm thick with cement conc (1:1.5:3) with stone chips with necessary reinforcement and shuttering including one 560 mm dia. R.C.C.manhole cover (heavy type) of approved make supplied, fitted and fixed in the cover slab with necessary fittings, making necessary arrangements for pipe connections, excavation of well including shoring, dewatering and removing the excess earth from the premises as per direction complete in all respect with all costs of labour and materials. With 250 mm thick dry brick work and 250 mm thick cement brick work (1:6) and 1.00m inside dia. (Other than SAIL/TATA/RINL) S.P.89,Item No-4 7th Corrigenda Volume ii</p>	1.00	16,621.00	Each	16,621.00
82	<p>Supplying, fitting and fixing towel rail with two brackets. (a) C.P. over brass (ii) 25 mm dia. and 600 mm long PWD S&P Schedule, n No 82 I No- 22 (a)(ii)</p>	2	430.00	Each	860.00
83	<p>Supplying, fitting and fixing cast iron raised rain proof tank cover 500 mm dia. with locking arrangements (weighing not less than 12 kg). PWD S&P Schedule, . page-37,item no - 8</p>	1	1,263.00	Each	1,263.00

Door - Window Shedule

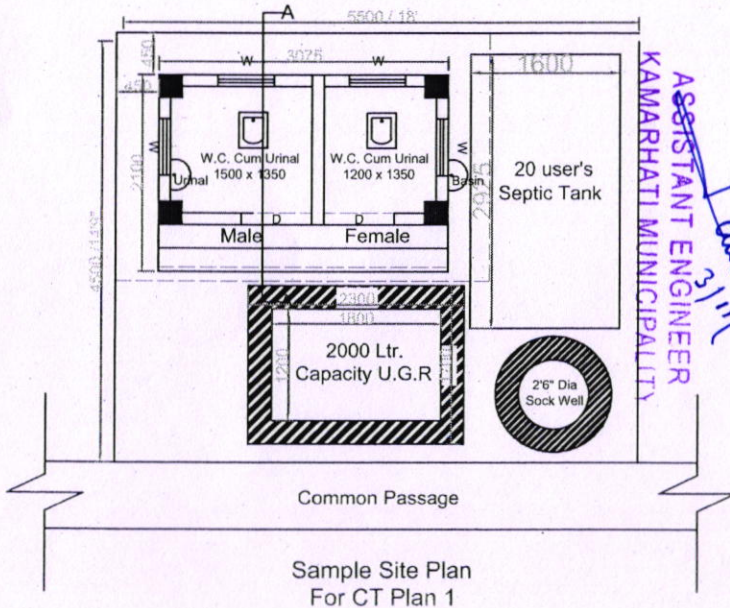
MKD.	Size
D	750x1800
W	600x450



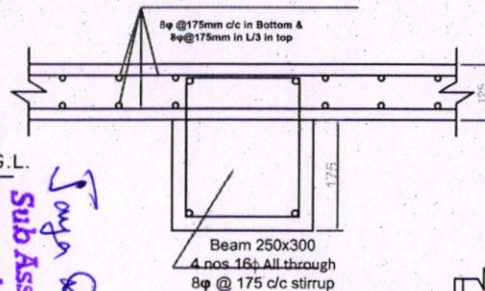
Under Ground Reservoir Details



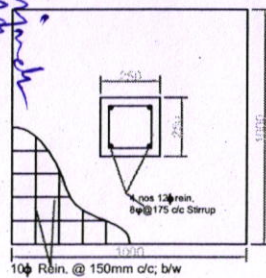
Ground Floor Plan



Sample Site Plan For CT Plan 1

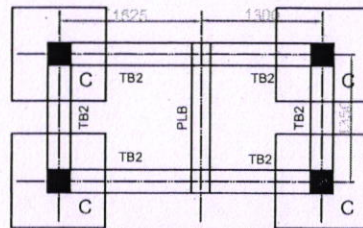


Slab Beam Details

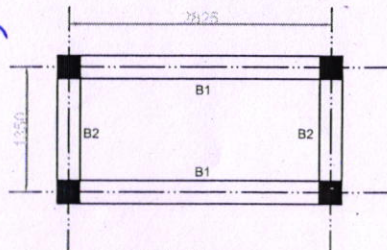


DETAILS OF FOUNDATION

(SCALE 1:25)



Foundation & tie Beam Details

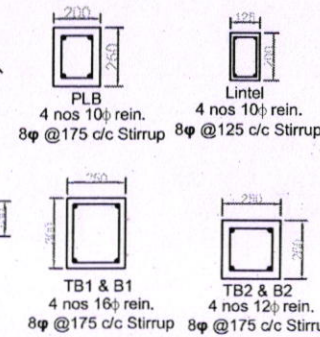
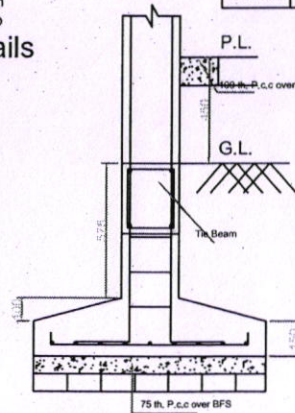


Slab Beam Details

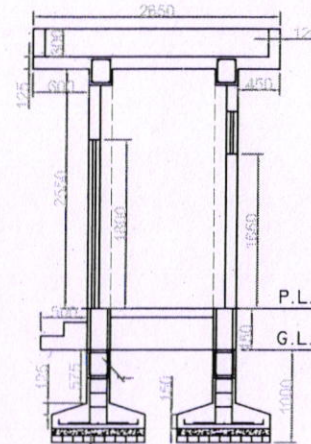
Area Statement

Builtup Area - 4.92 Sq.m.
Roof Area - 10.53 Sq.m.

MKD.	Size	Reinforcement				Stirrup
		Support		Span		
		Top	Bottom	Top	Bottom	
TB1&B1	250x300	2#16#	2#16#	2#16#	2#16#	8# @ 175 c/c
TB2&B2	200x250	2#12#	2#12#	2#12#	2#12#	8# @ 175 c/c
All Column	250x250			4#12#		8# @ 175 c/c



Typical Beam Details



DETAILS OF WALL SECTION A-A

Model Plan No. - CT-1

GENERAL NOTES

1. ALL DIMENSIONS ARE IN MM.
2. OUTER WALL IS 125 MM. TH. WITH 1ST CLASS BRICKS IN CEMENT MORTER(6:1) AND PARTION WALL IS 125MM. TH. IN CEMENT MORTER(4:1)
3. GRADE OF CONCRETE M-20 ORDINARY CEMENT CONCRETE (MIX:1.5:3)
4. GRADE OF STEEL:FE-510
5. 25MM. TH D.P.C(MIX:1:2:4) WILL BE APPLIED
6. PLASTERING:
OUTSIDE-15MM. TH. IN CEMENT MORTER(1:6)
INSIDE-15MM. TH. IN CEMENT MORTER(1:6)
CEILING-10MM. TH. CEMENT MORTER(1:4)
BEARING CAPACITY OF SOIL AT DEPTH 1M BELOW G.L. = 110 KN/M2, WHICH MUCH BE EXPLODED BEFORE CONSTRUCTION. REDRAWING & REDESIGN IS NESSESARY IS BEARRING CAPACITY OF SOIL IS POOR THEN ASSUMED.

Signature Of Authority

Sub Assistant Engineer
 Kamahati Municipality

ASSISTANT ENGINEER
 KAMARHATI MUNICIPALITY