

SL.NO	Item Description & Item No.	Nos	L	B	H	Qty	Total Quantity	Unit	Rate	Amount
		2	2.727	0.250		1.36		Sqm		
		4	0.80	0.250		0.80		Sqm		
	Boundary wall	2	14.000	0.500		14.00		Sqm		
		1	10.500	0.500		5.25		Sqm		
		2	1.500	1.000		3.00		Sqm		
		1	7.750	7.400		57.35		Sqm		
		2	1.2	0.95		2.28		Sqm		
						113.19	113.190	Sqm	324.00	36673.56
5	Supplying and laying polythine sheet ( 150 gm/sq.m ) over dampproof course or below flooring or roof terracing or foundation or foundation trenches. PWD Building Works schedule, Page -47, Item-3									
	Toilet cum urinal	2	1.600	1.200		3.84		Sq.M.		
	Passage	1	1.525	0.750		1.14		Sq.M.		
	Toilet cum urinal	2	1.750	1.200		4.20		Sq.M.		
	Open Space Basin	1	1.800	3.505		6.31		Sq.M.		
	Passage	1	1.000	2.225		2.23		Sq.M.		
	Toilet	3	1.025	1.200		3.69		Sq.M.		
	Open Space Basin and urinal	1	3.325	3.545		11.79		Sq.M.		
	Passage	1	2.725	0.975		2.66		Sq.M.		
	Passage	1	1.000	1.250		1.25		Sq.M.		
	Care Taker Room	1	1.400	2.725		3.82		Sq.M.		
						40.93	40.93	Sq.M.	24.00	982.32
6	Cement concrete with graded stone ballast (40 mm size excluding shuttering) (a) 1:3:6 proportion									
		10	1.200	1.200	0.1	1.440		Cu.m		
		2	2.500	0.375	0.075	0.141		Cu.m		
		1	1.000	0.375	0.075	0.028		Cu.m		
	Boundary wall	2	14.000	0.500	0.075	1.050		Cu.m		
		1	10.500	0.500	0.075	0.394		Cu.m		
		2	1.500	1.000	0.075	0.225		Cu.m		
		2	1.2	0.95	0.075	0.171		Cu.m		
						3.449	3.449	Cu.m	5442.18	18770.08
7	Ordinary Cement concrete (mix 1:2:4) with graded stone chips (20 mm nominal size) excluding shuttering and reinforcement,if any, in ground floor as per relevant IS codes. a) Pakur Variety (P-12, Item-5)									
	Toilet cum urinal	2	1.600	1.200	0.075	0.288		Cum		
	Passage	1	1.525	0.750	0.075	0.086		Cum		
	Toilet cum urinal	2	1.750	1.200	0.075	0.315		Cum		
	Open Space Basin	1	1.800	3.505	0.075	0.473		Cum		
	Passage	1	1.000	2.225	0.075	0.167		Cum		
	Toilet	3	1.025	1.200	0.075	0.277		Cum		
	Open Space Basin and urinal	1	3.325	3.545	0.075	0.884		Cum		
	Passage	1	2.725	0.975	0.075	0.199		Cum		
	Passage	1	1.000	1.250	0.075	0.094		Cum		
	Care Taker Room	1	1.400	2.725	0.075	0.266		Cum		
						3.069	3.069	Cum	5601.68	17191.59
8	Brick work with 1st class bricks in cement mortar (1:6) (a) Foundation and plinth ground floor PWD Building Works schedule, Page -15, Item-7.a (Rate Analysis)									
		8	3.325	0.250	0.600	3.990		Cu.m		
		3	2.55	0.250	0.600	1.148		Cu.m		
		3	3.05	0.250	0.600	1.373		Cu.m		
		1	2.073	0.250	0.600	0.311		Cu.m		
		2	2.727	0.250	0.600	0.818		Cu.m		
		2	1.65	0.250	0.600	0.495		Cu.m		
		2	2.500	0.250	0.600	0.750		Cu.m		

**CONSTRUCTION OF PUBLIC TOILET NEAR MAA CANTEEN IN WARD NO. 01 UNDER  
BALURGHAT MUNICIPALITY**

**TOILET SEATS - 7 NOS, URINAL - 10 NOS**

SL.NO	Item Description & Item No.	Nos	L	B	H	Qty	Total Quantity	Unit	Rate	Amount
1	Earth work in excavation of foundation trenches or drains, in all sorts of soil (including mixed soil but excluding laterite or sandstone) including removing, spreading or stacking the spoils within a lead of 75 m, as directed. The item includes necessary trimming the sides of trenches, levelling, dressing and ramming the bottom, bailing out water as required complete. (a) Depth of excavation not exceeding 1,500 mm. PWD Building Works schedule, Page - 1, Item - 3.a									
	Column	10	1.200	1.200	1.125	16.200		Cu.m		
	Ramp	2	2.500	0.375	0.150	0.281		Cu.m		
		4	1.000	0.375	0.150	0.225		Cu.m		
	Tie Beam at GL	8	3.325	0.300	0.325	2.594		Cu.m		
		3	2.550	0.300	0.325	0.746		Cu.m		
		3	3.050	0.300	0.325	0.892		Cu.m		
		1	2.073	0.300	0.325	0.202		Cu.m		
		2	2.727	0.300	0.325	0.532		Cu.m		
		4	0.800	0.300	0.325	0.312		Cu.m		
	Boundary wall	2	14.000	0.500	0.375	5.250		Cu.m		
		1	10.500	0.500	0.375	1.969		Cu.m		
	Steps	2	1.200	0.950	0.175	0.399		Cu.m		
						29.602	29.602	Cu.m	119.27	3530.63
2	Earth work in filling in foundation trenches or plinth with good earth, in layers not exceeding 150 mm, including watering and ramming etc. layer by layer complete. (Payment to be made on the basis of measurement of finished quantity of work). (a) With earth obtained from excavation of foundation. PWD Building Works schedule, Page - 1, Item - 3.a (1/3 x 32.842 = 10.947 m3)					9.867	9.867	Cum	77.54	765.09
3	Filling in foundation or plinth by silver sand in layers not exceeding 150 mm as directed and consolidating the same by thorough saturation with water, ramming complete including the cost of supply of sand. (payment to be made on measurement of finished quantity) PWD Building Works schedule, Page - 2, Item - 4.a									
	Toilet cum urinal	2	1.800	1.200	0.600	2.304		Cu.m		
	Passage	1	1.525	0.750	0.600	0.686		Cu.m		
	Toilet cum urinal	2	1.750	1.200	0.600	2.520		Cu.m		
	Open Space Basin	1	1.800	3.505	0.600	3.785		Cu.m		
	Passage	1	1.000	2.225	0.600	1.335		Cu.m		
	Toilet	3	1.025	1.200	0.600	2.214		Cu.m		
	Open Space Basin and urinal	1	3.325	3.545	0.600	7.072		Cu.m		
	Passage	1	2.725	0.975	0.600	1.594		Cu.m		
	Passage	1	1.000	1.250	0.600	0.750		Cu.m		
	Care Taker Room	1	1.400	2.725	0.600	2.289		Cu.m		
						24.549	24.549	Cu.m	487.41	11965.43
4	Single Brick Flat Soling of picked jhama bricks including ramming and dressing bed to proper level and filling joints with local sand. PWD Building Works schedule, Page- 14, Item - 1 ( Corri. Page-01, Date-04-08-2018)									
		10	1.200	1.200		14.40		Sqm		
		2	2.500	0.375		1.88		Sqm		
		4	1.000	0.375		1.50		Sqm		
		8	3.325	0.250		6.65		Sqm		
		3	2.55	0.250		1.91		Sqm		
		3	3.05	0.250		2.29		Sqm		
		1	2.073	0.250		0.52		Sqm		

SL.NO	Item Description & Item No.	Nos	L	B	H	Qty	Total Quantity	Unit	Rate	Amount
	Deduction for opening							Sqm		
	Door	7	0.750	-1	2.100	-11.03		Sqm		
		1	0.800	-1	2.100	-1.68		Sqm		
	Window	2	0.750	-1	1.200	-1.80		Sqm		
						43.77	43.770	Sqm	674.33	29515.42
12	Ordinary Cement concrete (mix 1:1.5:3) with graded stone chips (20 mm nominal size) excluding shuttering and reinforcement,if any, in ground floor as per relevant IS codes.a) Pakur Variety /Chandil Variety PWD Building Works schedule, p-26 Item 10 a (Rate Analysis)									
	Footing	10	1.200	1.200	0.200	2.88		Cu.m		
	$4 \times 3 \times \{ (1.20 \times 1.20 ) + (0.250 \times 0.250 ) \} / 2 \times 0.20 = 1.803 \text{ m}^3$	10	1.440	0.063	0.200	1.503		Cu.m		
	Pedestal	10	0.400	0.400	0.300	1.200		Cu.m		
	Column below PL	10	0.250	0.250	0.600	1.500		Cu.m		
	Column upto Roof	10	0.250	0.250	2.750	1.719		Cu.m		
	Tie Beam at GL	8	3.325	0.250	0.250	1.663		Cu.m		
		3	2.55	0.250	0.250	0.478		Cu.m		
		3	3.05	0.250	0.250	0.572		Cu.m		
		1	2.073	0.250	0.250	0.130		Cu.m		
		2	2.727	0.250	0.250	0.341		Cu.m		
		4	0.80	0.250	0.250	0.200		Cu.m		
	Lintel	4	3.325	0.250	0.150	0.499		Cu.m		
		3	2.55	0.25	0.150	0.287		Cu.m		
		3	3.05	0.25	0.150	0.343		Cu.m		
		1	2.073	0.25	0.150	0.078		Cu.m		
		2	1.850	0.25	0.150	0.124		Cu.m		
		2	2.725	0.125	0.150	0.102		Cu.m		
		2	3.325	0.125	0.150	0.125		Cu.m		
		5	1.200	0.125	0.150	0.113		Cu.m		
		1	3.850	0.125	0.150	0.072		Cu.m		
		2	0.900	0.450	0.075	0.061		Cu.m		
	Tie Beam at Roof	8	3.325	0.250	0.150	0.998		Cu.m		
		3	2.550	0.250	0.150	0.287		Cu.m		
		3	3.050	0.250	0.150	0.343		Cu.m		
		1	2.073	0.250	0.150	0.078		Cu.m		
		2	2.727	0.250	0.150	0.205		Cu.m		
		4	0.800	0.250	0.150	0.120		Cu.m		
	Roof	1	7.700	6.650	0.125	6.401		Cu.m		
		2	1.000	1.000	0.125	0.250		Cu.m		
		1	1.950	1.000	0.125	0.244		Cu.m		
						22.916	22.916	Cu.m	6107.32	139955.35
13	Reinforcement for reinforced concrete work in all sorts of structures including distribution bars, stirrups, binders etc initial straightening and removal of loose rust (if necessary), cutting to requisite length, hooking and bending to correct shape, placing in proper position and binding with 16 gauge black annealed wire at every intersection, complete as per drawing and direction. (a) For works in foundation and upto roof of ground floor/upto 4 m. (i) Tor steel/Mild Steel , JSPL/SWAYN/ELETRO/STEEL PWD Building Works schedule, Page - 43, Item - 40.a.i.1( Corri. 10th Page-01, Date-23-01-2020) (Rate Analysis)									
	Reinforcement @ 1.25% of Item No.12					22.515	22.515	Qtl	5826.05	131151.00

SL.NO	Item Description & Item No.	Nos	L	B	H	Qty	Total Quantity	Unit	Rate	Ammount
		4	1.000	0.500	0.600	1.200		Cu.m		
	Steps	2	1.000	0.750	0.150	0.225		Cu.m		
		2	1.000	0.500	0.150	0.150		Cu.m		
		2	1.000	0.250	0.150	0.075		Cu.m		
	Boundry wall	2	14.00	0.500	0.150	2.100		Cu.m		
		1	10.50	0.500	0.150	0.788		Cu.m		
		2	14.00	0.375	0.300	3.150		Cu.m		
		1	10.50	0.375	0.300	1.181		Cu.m		
						17.754	17.754	Cu.m	4919.88	87347.55
9	25mm. thick damp proof course with cement concrete with stone chips (1:1.5:3) [with graded stone aggregate 10 mm nominal size] and admixture of water proofing compound as per manufacturer's specification followed by two coat of polymer based paint, (1st coat after 4 to 5 days of concrete laying and 2 nd coat just before brick masonry work) as directed (cost of water proofing compound & polymer based paint to be paid separately). (Chequering not required over concrete or painted surface). [Note:- Waterproofing as per item 9, polymer based paint as per item 8 (a) of subhead C of Section (C). PWD Building Works schedule, Page -47, Item -1 (Rate Analysis)]									
		8	3.325	0.250		2.76		Sqm		
		3	2.55	0.250		1.63		Sqm		
		3	3.05	0.250		2.33		Sqm		
		1	2.073	0.250		1.07		Sqm		
		2	2.727	0.250		1.86		Sqm		
						9.65	9.65	Sqm	206.00	1987.90
10	Brick work with 1st class bricks in cement mortar (1:4) (b) superstructure- ground floor PWD Building Works schedule, Page -15, Item-7.b (Rate Analysis)									
		8	3.325	0.25	2.75	18.288		Cu.m		
		3	2.55	0.25	2.75	5.259		Cu.m		
		3	3.05	0.25	2.75	6.291		Cu.m		
		1	2.073	0.25	2.75	1.425		Cu.m		
		2	2.727	0.25	2.75	3.750		Cu.m		
		2	1.65	0.25	2.75	2.269		Cu.m		
		2	14.00	0.25	0.30	2.100		Cu.m		
		1	10.50	0.25	0.30	0.788		Cu.m		
		2	14.00	0.25	1.500	10.500		Cu.m		
		1	10.50	0.25	1.500	3.938		Cu.m		
	Deduction for opening									
	Door	2	1.00	-0.25	2.10	-1.050		Cu.m		
	Window	2	0.75	-0.25	1.20	-0.450		Cu.m		
	Ventilator	10	0.75	-0.25	0.60	-1.125		Cu.m		
						51.983	51.983	Cu.m	5395.40	280469.08
11	125 mm. thick brick work with 1st class bricks in cement mortar (1:4) in ground floor. P-31, Item-29									
		2	3.325		2.100	13.97		Sqm		
		3	1.200		2.100	7.56		Sqm		
		2	1.200		2.100	5.04		Sqm		
		2	1.750		2.100	7.35		Sqm		
		2	2.725		2.750	14.99		Sqm		
	Parapet Wall	1	7.400		0.300	2.22		Sqm		
		2	2.975		0.300	1.79		Sqm		
		2	2.000		0.300	1.20		Sqm		
		1	1.650		0.300	0.50		Sqm		
		2	6.100		0.300	3.66		Sqm		

SL.NO	Item Description & Item No.	Nos	L	B	H	Qty	Total Quantity	Unit	Rate	Amount
16	Plaster (to wall, floor, ceiling etc.) with sand and cement mortar including rounding off or chamfering corners as directed and raking out joints including throating, nosing and drip course, scaffolding/staging where necessary (Ground floor).[Excluding cost of chipping over concrete surface] (i) With 1:8 cement mortar (c) 15 mm thick plaster PWD Building Works schedule, P-189 It- No. 1 (Rate Analysis)									
	Outside Wall	1	7.400	3.475		25.72		Sqm		
		2	6.350	3.475		44.13		Sqm		
		2	2.975	3.475		20.68		Sqm		
		2	1.000	2.750		5.50		Sqm		
		1	1.650	3.475		5.73		Sqm		
	Parapet Wall	1	7.40	0.3		2.22		Sqm		
		2	2.98	0.3		1.79		Sqm		
		2	2.00	0.3		1.20		Sqm		
		1	1.65	0.3		0.50		Sqm		
		2	6.35	0.3		3.81		Sqm		
	Inside Wall	2	1.600	2.100		6.72		Sqm		
		4	1.200	2.100		10.08		Sqm		
		2	1.750	2.100		7.35		Sqm		
		2	0.800	2.900		4.64		Sqm		
		2	1.225	2.900		7.11		Sqm		
		1	4.875	2.900		14.14		Sqm		
		2	1.200	2.100		5.04		Sqm		
		1	3.325	2.100		6.98		Sqm		
	Boundary Wall	4	14.000	1.500		84.00		Sqm		
		2	10.500	1.500		31.50		Sqm		
	Deduction for Opening									
	Door	2	1.00	-1	2.1	-4.20		Sqm		
	Door	7	0.75	-1	2.1	-11.03		Sqm		
		1	0.8	-1	2.1	-1.68		Sqm		
	Window	4	0.75	-1	1.2	-3.60		Sqm		
	Ventilator	10	0.75	-1	0.6	-4.50		Sqm		
						263.83	263.830	Sqm	141.48	37326.67
17	Plaster (to wall, floor, ceiling etc.) with sand and cement mortar including rounding off or chamfering corners as directed and raking out joints including throating, nosing and drip course, scaffolding/staging where necessary (Ground floor).[Excluding cost of chipping over concrete surface] (ii) With 1:4 cement mortar (c) 10 mm thick plaster PWD Building Works schedule, P-189 It- No. 1 (ii)(c) (Rate Analysis)									
		1	3.325	4.875		16.21		Sqm		
		1	3.325	5.85		19.45		Sqm		
		1	1.40	2.725		3.82		Sqm		
		1	2.25	0.975		2.19		Sqm		
		2	2.975	1.000		5.95		Sqm		
		2	7.70	0.150		2.31		Sqm		
		2	6.65	0.150		2.00		Sqm		
	Steps	2	3	1.000	0.25	1.50		Sqm		
		2	4	1.000	0.15	1.20		Sqm		
		2	1	0.250	0.45	0.23		Sqm		
		2	1	0.250	0.3	0.15		Sqm		
		2	1	0.250	0.15	0.08		Sqm		
						55.09	55.090	Sqm	126.48	6967.78

SL.NO	Item Description & Item No.	Nos	L	B	H	Qty	Total Quantity	Unit	Rate	Amount
14	Hire and labour charges for shuttering with centering and necessary staging upto 4 m using approved stout props and thick hard wood planks of approved thickness with required bracing for concrete slabs, beams and columns, lintels curved or straight including fitting, fixing and striking out after completion of works (upto roof of ground floor) (a) 25 mm to 30 mm thick wooden shuttering as per decision & direction of Engineer-in-Charge. PWD Building Works schedule, Page -42, Item- 36.a									
	Column	10	4	0.25	2.75	27.50		Sqm		
	Lintel	4	2	3.325	0.15	3.99		Sqm		
		3	2	2.550	0.15	2.30		Sqm		
		3	2	3.050	0.15	2.75		Sqm		
		1	2	2.073	0.15	0.62		Sqm		
		2	2	1.650	0.15	0.99		Sqm		
		2	2	2.725	0.15	1.64		Sqm		
		2	2	3.325	0.15	2.00		Sqm		
		5	2	1.200	0.15	1.80		Sqm		
		1	2	3.850	0.15	1.16		Sqm		
		2	1	0.900	0.45	0.81		Sqm		
	Tie Beam	8	2	3.325	0.15	7.980		Sqm		
	Tie Beam	3	2	2.55	0.15	2.295		Sqm		
	Tie Beam	3	2	3.05	0.15	2.745		Sqm		
	Tie Beam	1	2	2.073	0.15	0.622		Sqm		
	Tie Beam	2	2	2.727	0.15	1.636		Sqm		
	Tie Beam	4	2	0.8	0.15	0.960		Sqm		
	Roof Slab	1	1	7.700	6.650	51.205		Sqm		
	Roof Slab	1	2	0.950	0.995	1.891		Sqm		
	Roof Slab	1	2	1.95	1.00	3.900		Sqm		
	Side of Roof Slab	1	1	7.700	0.125	0.963		Sqm		
	Side of Roof Slab	2	1	6.650	0.125	1.663		Sqm		
	Side of Roof Slab	2	1	1.000	0.125	0.250		Sqm		
	Side of Roof Slab	1	1	1.950	0.125	0.244		Sqm		
						121.91	121.91	Sqm	328.00	39987.79
15	Hire and labour charges for shuttering with centering and necessary staging upto 4 m using approved stout props and thick hard wood planks of approved thickness with required bracing for concrete slabs, beams and columns, lintels curved or straight including fitting, fixing and striking out after completion of works (upto roof of ground floor) PWD Building Works schedule, Page -42, Item- 36.f									
	(f) 25 mm to 30 mm shuttering without staging in foundation									
	PCC Portion	10	4	1.20	0.1	4.800		Sqm		
		2	2	2.50	0.075	0.750		Sqm		
		1	2	1.00	0.075	0.150		Sqm		
		2	2	14.00	0.075	4.200		Sqm		
		1	2	10.50	0.075	1.575		Sqm		
		2	2	1.50	0.075	0.450		Sqm		
	Base of Column	10	4	1.2	0.2	9.600		Sqm		
		10	4	0.4	0.3	4.800		Sqm		
		10	4	0.25	0.6	6.000		Sqm		
		8	2	3.325	0.25	13.300		Sqm		
		3	2	2.55	0.25	3.825		Sqm		
		3	2	3.05	0.25	4.575		Sqm		
		1	2	2.073	0.25	1.037		Sqm		
		2	2	2.727	0.25	2.727		Sqm		
		4	2	0.80	0.25	1.600		Sqm		
						623.64	623.64	Sqm	205.00	127846.61

SL.NO	Item Description & Item No.	Nos	L	B	H	Qty	Total Quantity	Unit	Rate	Amount
		1	2.725	0.975		2.66		Sqm		
		1	1.000	1.250		1.25		Sqm		
		1	1.400	2.725		3.82		Sqm		
						40.93	40.93	Sqm	256.83	10512.05
21	Neat cement punning about 1.5 mm thick in wall ,dado, window sills, floors etc . Note cement 0.152 m3/100 m2 PWD Building Works schedule, P-192 It- No. 15									
		4	14.00	0.60		33.60		Sqm		
		2	10.50	0.60		12.60		Sqm		
		1	7.40	0.60		4.44		Sqm		
		2	6.35	0.60		7.62		Sqm		
		2	2.975	0.60		3.57		Sqm		
		2	1.00	0.60		1.20		Sqm		
		1	1.65	0.60		0.99		Sqm		
	Steps	2	3	1	0.25	1.50		Sqm		
		2	4	1	0.15	1.20		Sqm		
		2	1	0.25	0.45	0.23		Sqm		
		2	1	0.25	0.3	0.15		Sqm		
		2	1	0.25	0.15	0.08		Sqm		
						67.18	67.180	Sqm	32.72	2198.13
22	Collapsible gate with 40 mm x 10 mm x 6 mm Tee as top and bottom guide rail , 20 mm x 10 mm x 2 mm vertical channels 100 mm apart in full stretched position 20m x 5 mm MS flats as collapsible bracings properly reveted and washered including 38 mm steel roller including locking arrangements , fitted and fixed in position with lugs set in cement concrete including cutting necessary hiles chasing etc in walls , floors etc and making good all damages . PWD Building Works schedule, Page -106, Item- 18									
		2	1.000	2.100		4.20	4.20	Sqm	4351.00	18274.20
23	Supplying, fitting and fixing fibre reinforced polymer (FRP) Composite door frame as per approved section with glass fibre reinforced plastic moulded skins and a special sandwich core, so as to impart monolithic composite structure as per approved technology of Department of Science and Technology (DST) to satisfy IS: 4020 door testing performance criteria. (i) 66mm x 90mm PWD Building Works schedule, P-115, It - 3 (i)									
		2	1.00			2.00		Mtr		
		7	0.75			5.25		Mtr		
		18	2.10			37.80		Mtr		
						45.05	45.05	Mtr	497.00	22389.85
24	Supplying, fitting & fixing fibre reinforced polymer (FRP) Composite door shutters as per approved design with glass fibre reinforced plastic moulded skins and a special sandwich core, so as to impart monolithic composite structure as per approved technology of Department of Science and Technology (DST) to satisfy IS:4020 door testing performance criteria. In ground floor. ii) 25 mm thick P-125, It- 14(ii)									
		2	1.00	2.1		4.20		Sqm		
		7	0.75	2.1		11.03		Sqm		
						15.23	15.230	Sqm	2581.00	39308.63
25	Anodised aluminium barrel / tower / socket bolt (full covered) of approved manufactured from extruded section conforming to I.S. 204/74 fitted and fixed with cadmium plated screws . (vii) 225mm long x 10mm dia. bolt. PWD Building Works schedule, P-144, It No. 26 (vii)									
		2	1.00			2.00		Each		
		7	1.00			7.00		Each		
						9.00	9.00	Each	84.00	756.00

Sl.No	Item Description & Item No.	Nos	L	B	H	Qty	Total Quantity	Unit	Rate	Amount
18	Plaster (to wall, floor, ceiling etc.) with sand and cement mortar including rounding off or chamfering corners as directed and raking out joints including throating, nosing and drip course, scaffolding/staging where necessary (Ground floor).[Excluding cost of chipping over concrete surface] (i) With 1:6 cement mortar (a) 20 mm thick plaster PWD Building Works schedule, P-189 It- No. 1 (Rate Analysis)									
	Inside Wall	2	1.600	2.750		8.80		Sqm		
		3	1.200	2.750		9.90		Sqm		
		2	0.750	2.750		4.13		Sqm		
		2	1.200	2.100		5.04		Sqm		
		2	3.325	2.100		13.97		Sqm		
		3	1.200	2.100		7.56		Sqm		
		1	3.775	2.100		7.93		Sqm		
		1	3.350	2.750		9.21		Sqm		
		2	1.400	2.750		7.70		Sqm		
		2	2.725	2.750		14.99		Sqm		
		2	2.725	2.750		14.99		Sqm		
		1	4.525	2.750		12.44		Sqm		
	Parapet Wall	1	7.150	0.3		2.15		Sqm		
		2	2.975	0.3		1.79		Sqm		
		2	2.000	0.3		1.20		Sqm		
		1	1.400	0.3		0.42		Sqm		
		2	6.10	0.3		3.66		Sqm		
	Deduction for Opening									
	Door	2	1.000	-1	2.1	-4.20		Sqm		
	Door	7	0.75	-1	2.1	-11.03		Sqm		
		1	0.8	-1	2.1	-1.68		Sqm		
	Window	4	0.75	-1	1.2	-3.60		Sqm		
	Ventilator	10	0.75	-1	0.6	-4.50		Sqm		
						100.87	100.87	Sqm	162.65	16406.51
19	Labour for Chipping of concrete surface before taking up Plastering work. PWD Building Works schedule, P-192, It-1									
	Ceiling	1	3.325	4.875		16.21		Sqm		
		1	3.325	5.85		19.45		Sqm		
		1	1.4	2.725		3.82		Sqm		
		1	2.25	0.975		2.19		Sqm		
		2	2.975	1.00		5.95		Sqm		
		2	7.70	0.15		2.31		Sqm		
		2	6.65	0.15		2.00		Sqm		
						51.93	51.93	Sqm	21.00	1090.53
20	Artificial stone in floor ,dado,staircaseetc with cement mortar (1:2:4)with stone chips lsied in panels as directed with topping made with ordinary or white cement (as necessary) and marbel dust in proportion (1:2) in cluding smooth finishing and rounding off corners including raking out joints or roughening of concrete surface and application of cement slurry before flooring works using cement @ 1.75 kg/ sq.m all complete including all materials and labour. In ground floor 3 mm thick topping using gray cement (ii)25 mm PWD Building Works schedule, p-48 Item 6(ii)									
		2	1.600	1.200		3.84		Sqm		
		1	1.525	0.750		1.14		Sqm		
		2	1.750	1.200		4.2		Sqm		
		1	1.800	3.505		6.31		Sqm		
		1	1.000	2.225		2.23		Sqm		
		3	1.025	1.200		3.69		Sqm		
		1	3.325	3.545		11.79		Sqm		

SL.NO	Item Description & Item No.	Nos	L	B	H	Qty	Total Quantity	Unit	Rate	Amount
		1	2.25	0.975		2.19		Sqm		
		2	2.975	1.00		5.95		Sqm		
		2	7.7	0.15		2.31		Sqm		
		2	6.65	0.15		2.00		Sqm		
	Outside Wall	1	7.4	2.875		21.28		Sqm		
		2	6.35	2.875		36.51		Sqm		
		2	2.975	2.875		17.11		Sqm		
		2	1.00	2.75		5.50		Sqm		
		1	1.65	2.875		4.74		Sqm		
	Parapet Wall	1	7.40	0.3		2.22		Sqm		
		2	2.975	0.3		1.79		Sqm		
		2	2.00	0.3		1.20		Sqm		
		1	1.65	0.3		0.50		Sqm		
		2	6.35	0.3		3.81		Sqm		
		1	7.15	0.3		2.15		Sqm		
		2	2.975	0.3		1.79		Sqm		
		2	2	0.3		1.20		Sqm		
		1	1.4	0.3		0.42		Sqm		
		2	6.1	0.3		3.66		Sqm		
		2	1.6	0.000		0.00		Sqm		
		4	1.2	0.000		0.00		Sqm		
		2	1.75	0.000		0.00		Sqm		
	Inside Wall	2	0.8	2.9		4.64		Sqm		
		2	1.225	2.9		7.11		Sqm		
		1	4.875	2.9		14.14		Sqm		
		2	1.2	0.000		0.00		Sqm		
		1	3.325	0.000		0.00		Sqm		
		2	1.600	0.65		2.08		Sqm		
		3	1.2	0.65		2.34		Sqm		
		2	0.750	0.65		0.98		Sqm		
		2	1.200	0.00		0.00		Sqm		
		2	3.325	0.00		0.00		Sqm		
		3	1.200	0.00		0.00		Sqm		
		1	3.775	0.00		0.00		Sqm		
		1	3.350	0.65		2.18		Sqm		
		2	1.400	0.65		1.82		Sqm		
		2	2.725	0.65		3.54		Sqm		
		2	2.725	0.65		3.54		Sqm		
		1	4.525	0.65		2.94		Sqm		
		4	14.00	1.5		84.00		Sqm		
		2	10.50	1.5		31.50		Sqm		
	Deduction for Opening									
	Ventilator	10	0.75	-1	0.60	-4.50		Sqm		
						<b>312.12</b>	<b>312.12</b>	<b>Sqm</b>	<b>122.00</b>	<b>38078.64</b>
34	Applying interior grade Acrylic Primer of approved quality and brand on plastered and concrete surface old or new surface to receive Distemper Acrylic emulsion paint including scraping and preparing the surface thoroughly , complete as per manufacturer's specification and as per direction of the E-I-C ( Ground Floor ) ( b ) Two Coats i) Water based interior grade Acrylic Primer PWD Building Works schedule, Page -195 ; Item no- 7 b)(i) .									
		1	3.325	4.875		16.21		Sqm		
		1	3.325	5.850		19.45		Sqm		
		1	1.400	2.725		3.82		Sqm		
		1	2.250	0.975		2.19		Sqm		

SLNO	Item Description & Item No.	Nos	L	B	H	Qty	Total Quantity	Unit	Rate	Amount
26	Iron butt hinges of approved quality fitted and fixed with steel screws, with ISI mark. (viii) 100mm X 75mm X 3.50mm. PWD Building Works schedule, P-140, It No. -5 (viii)									
		2	3.00			6.00		Each		
		7	3.00			21.00		Each		
						27.00	27.00	Each	66.00	1782.00
27	Anodised aluminium decorative handle (hexagonal / fluted) of approved quality fitted and fixed complete. (i) 150mm plate x 10mm dia rod x 12mm hexagonal/fluted. PWD Building Works schedule, Page -146 . Item no-31,(i)									
		2	2.00			4.00		Each		
		7	2.00			14.00		Each		
						18.00	18.00	Each	87.00	1566.00
28	Iron hasp bolt of approved quality fitted and fixed complete (oxidised) with 16mm dia rod with concrete bolt and round fitting. b)250mm long. PWD Building Works schedule, Page -141 . Item no-10 b)					10.00	10.00	Each	159.00	1590.00
29	Panel shutters of door and window, as per design (each panel consisting of single plank without joint), including fitting and fixing the same in position but excluding the cost of hinge and other fittings. (i) 40 mm thick shutters with 19 mm thick panel of size 30 to 45 cm in ground floor.(In case of non-supply of single plank, penal rate of reduction of 20% will be made)-(b) Sishu, Gamar, Champ,Badam,Bhola, Mogra, Hallak. (ii) 40mm thick shutters with 19mm thick panel of size 30 to 45 cm for Door "D" Page No. 117, Item No. 1) iv) b)									
		1	0.800	2.100		1.680	1.680	Sqm	2968.00	4986.24
30	Wood work in door and window frame fitted and fixed in position complete including a protective coat of painting at the contact surface of the frame excluding cost of concrete, Iron Butt Hinges and M.S clamps. (The quantum should be corrected upto three decimals). Note: Extra for Lifting Charges for each additional floor, i) Rs. 200/- per Cu.m (upto 4th floor) (d) Sal: Local Page 114, Item No. 1. (h) Neem, Jam, Jackfruits									
		1	0.800	2.100	0.075	0.028	0.028	Cum	71907.00	2013.40
31	Supplying, fitting and fixing M.S. clamps for door and window frame made of flat bent bar, end bifurcated with necessary screws etc. by cement concrete(1:2:4) as per direction. (Cost of concrete will be paid separately)- (c) 40mm X 6mm, 125mm Length Pg-140 of 315, It-40									
		1	6.00			6.00	6.00	nos	20.00	120.00
32	Supplying and laying chequered tiles of any shade and of approved quality with (1:1.5:3) cement concrete laied in pannels or patterns as directed in pavement ,footpath etc including necessary underlay 25 mm thick (avg)cement mortar (1:3) complete in all respect with all labour and materials ( Using cement slurry @4.4kg/sq.m at back side and @2.4 kg/sq.m for joint filling ). PWD Building Works schedule, Page -74 , Item no- 46(i) . 25 mm thick									
		2	1.500	1.500		4.50		Sqm		
		2	1.000	2.125		4.25		Sqm		
		2	14.000	1.500		42.00		Sqm		
		1	10.500	1.500		15.75		Sqm		
				66.50	66.500	Sqm	473.00	31454.50		
33	Rendering the Surface of walls and ceiling with White Cement base WATER PROOF wall putty of approved make & brand.(1.5 mm thick) In Ground Floor PWD Building Works schedule, PWD, P- 198, I - 5									
		Ceiling	1	3.325	4.875	16.21		Sqm		
			1	3.325	5.85	19.45		Sqm		
			1	1.4	2.725	3.82		Sqm		

SL.NO	Item Description & Item No.	Nos	L	B	H	Qty	Total Quantity	Unit	Rate	Amount
37	Protective and Decorative Acrylic Exterior emulsion paint of approved quality, as per manufacturer's specification and as per direction of EIC to be applied over Acrylic primer as required. The rate includes cost of materials, labour, scaffolding and all incidental charges but excluding the cost of primer in ground floor (two coats)(a) normal acrylic emulsion. PWD Building Works schedule, Page -197, Item no- 17(a) Same as Item No. 36					219.38	219.38	Sqm	67.00	14698.46
38	(b) Priming one coat on timber or plastered surface with synthetic oil bound primer of approved quality including smoothing surfaces by sand papering etc. PWD Building Works schedule, Page -200, Item no- 1 (b)									
		1	0.8	2.1	2.6	4.37	4.37	Sqm	38.00	166.06
39	(A) Painting with best quality synthetic enamel paint of approved make and brand including smoothing surface by sand papering etc. including using of approved putty etc. on the surface, if necessary : (a) On timber or plastered surface : With super gloss (hi-gloss) - (iv) Two coats (with any shade except white) PWD Building Works schedule, Page -200, Item no- 2(A)(a)(iv)									
		1	0.8	2.1	2.6	4.37	4.37	Sqm	81.00	353.97
40	(a) M.S.or W.I. Ornamental grill of approved design joints continuously welded with M.S, W.I. Flats and bars of windows, railing etc. fitted and fixed with necessary screws and lugs in ground floor. (i) Grill weighing above 10 Kg./sq.mtr and up to 16 Kg./sq. mtr. PWD Building Works schedule, P-104 Item-13 A (i) (3rd Corrigendam Page No 91)									
		4	0.75	1.2		3.60		Sqm		
		10	0.75	0.6		4.50		Sqm		
						8.10		Sqm		
	10.5kg /Sqm.					85.05	85.050	Kg	100.21	8522.86
41	a) Priming one coat on steel or other metal surface with synthetic oil bound primer of approved quality including smoothing surfaces by sand papering etc. PWD Building Works schedule, P/200 Item-1(a)									
		2	1.00	2.10		4.20		Sqm		
		4	0.75	1.20		3.60		Sqm		
		10	0.75	0.60		4.50		Sqm		
						12.30	12.300	Sqm	29.00	356.70
42	(A) Painting with best quality synthetic enamel paint of approved make and brand including smoothing surface by sand papering etc. including using of approved putty etc. on the surface, if necessary : (b) On steel or other metal surface : (iv) Two coats (with any shade except white)									
		2	1.00	2.10		4.20		Sqm		
		4	0.75	1.20		3.60		Sqm		
		10	0.75	0.60		4.50		Sqm		
						12.30	12.300	Sqm	79.00	971.70





SL.NO	Item Description & Item No.	Nos	L	B	H	Qty	Total Quantity	Unit	Rate	Amount
43	Supplying and laying true to line and level vitrified tiles of approved brand (size not less than 600 mm X 600 mm X 10 mm thick) in floor, skirting etc. set in 20 mm sand cement mortar (1:4) and 2 mm thick cement slurry back side of tiles using cement @ 2.91Kg./sqM or using polymerised adhesive (6 mm thick layer applied directly over finished artificial stone floor/Mosaic etc without any backing course) laid after application slurry using 1.75 Kg of cement per sqM below mortar only, joints grouted with admixture of white cement and colouring Pigment to match with colour of tiles / epoxy grout materials of approved make as directed and removal of wax coating of top surface of tiles with warm water and polishing the tiles using soft and dry cloth upto mirror finish complete including the cost of materials, labour and all other incidental charges complete true to the manufacturer's specification and direction of Engineer-in-Charge. (White cement, synthetic adhesive and grout material to be supplied by the contractor) i) With application slurry @ 1.75 kg/ Sq.m, 20 mm sand cement mortar (1:4) & 2 mm thick cement slurry at back side of tiles, 0.2 kg/ Sq.m white cement for joint filling with pigment. (A) Deep Colour & White PWD Building Works schedule, Page-66 Item-36 (A) ( 3rd Corri)									
		2	1.600	1.200		3.84		Sqm		
		1	1.525	0.750		1.14		Sqm		
		2	1.750	1.200		4.20		Sqm		
		1	1.800	3.505		6.31		Sqm		
		1	1.000	2.225		2.23		Sqm		
		3	1.025	1.200		3.69		Sqm		
		1	3.325	3.545		11.79		Sqm		
		1	2.725	0.975		2.66		Sqm		
		1	1.000	1.250		1.25		Sqm		
		1	1.400	2.725		3.82		Sqm		
						40.93	40.930	Sqm	1695.00	69376.35
44	Supplying, fitting & fixing 1st quality Ceramic tiles in walls and floors to match with the existing work & 4 nos. of key stones (10mm) fixed with araldite at the back of each tile & finishing the joints with white cement mixed with colouring oxide if required to match the colour of tiles including roughening of concrete surface, if necessary or by synthetic adhesive & grout materials etc. B) Wall b) Area of each tile above 0.09 Sq.m ii) Other than Coloured decorative including white PWD Building Works schedule, page-64, Item:35.(B.) (b).(ii) ( 3rd Corrigendam ,Page 36)									
		2	2	1.600	2.1	13.44		Sqm		
		2	2	1.200	2.1	10.08		Sqm		
		3	2	1.20	2.1	15.12		Sqm		
		3	2	1.025	2.1	12.92		Sqm		
		1	2	3.325	2.1	13.97		Sqm		
		2	2	1.750	2.1	14.70		Sqm		
		1	2	1.225	2.1	5.15		Sqm		
		1	2	0.800	2.1	3.36		Sqm		
		1	2	3.550	2.1	14.91		Sqm		
		1	2	4.525	2.1	19.01		Sqm		
		1	2	1.400	2.1	5.88		Sqm		
		1	2	2.725	2.1	11.45		Sqm		
	Window	4	0.75	-1	1.200	-3.60		Sqm		
						139.02	139.020	Sqm	1041.00	144719.82

SL.NO	Item Description & Item No.	Nos	L	B	H	Qty	Total Quantity	Unit	Rate	Ammount
		1	6.00			6.00	6.00	Each	91.00	546.00
64	(f) Hand Shower(Health Faucet) with 1mtr Flexible Tube with Wall Hook(Equivalent to Code No.573 & Model -ALLIED of Jaquar or similar). PWD S&P Schedule, Page No.-3 Item No.- 3 f.	1	7.00			7.00	7.00	Each	1251.00	8757.00
65	(a) (i) Chromium plated Bib Cock short body (Equivalent to Code No. 511 & Model - Tropical / Sumthing Special of ESSCO or similar brand). PWD S&P Schedule, Page No.-6 Item No.-7-a-i	1	15.00			15.00	15.00	Each	539.00	8085.00
66	(b) (i) Chromium plated Stop Cock (Equivalent to Code No. 513(A) & 513(B) & Model - Tropical / Sumthing Special of ESSCO or similar. PWD S&P Schedule, Page No.-6 Item No.-7-b-i	1	15.00			15.00	15.00	Each	493.00	7395.00
67	Chromium plated angular Stop Cock with wall flange (Equivalent to Code No. 5053 & Model - Florentine of Jaquar or similar brand). PWD S&P Schedule, Page No.-6 Item No.-7-d-i,	1	6.00			6.00	6.00	Each	815.00	4890.00
68	Supplying, fitting and fixing pillar cock of approved make. a) (i) CP Pillar Cock - 15 mm. (Equivalent to Code No. 507 & Model - Tropical / Sumthing Special of ESSCO or similar brand). (P. No. - 45, Item. No. - 19(a)). Pwd Sanitary Plumbing Schedule 2017)	1	6.00			6.00	6.00	Each	555.00	3330.00
69	Supplying, fitting and fixing PVC pipes of approved make of Schedule 80 (medium duty) conforming to ASTM D - 1785 and threaded to match with GI Pipes as per IS : 1239 (Part - I), with all necessary accessories, specials viz. socket, bend, tee, union, cross, elbo, nipple, longscrew, reducing socket, reducing tee, short piece etc. fitted with holder bats clamps, including cutting pipes, making threads,fitting, fixing etc. complete in all respect including cost of all necessary fittings as required, jointing materials and two coats of painting with approved paint in any position above ground. (Payment will be made on the centre line measurements of total pipe line including all specials. No separate payment will be made for accesories, specials. Payment for painting will be made seperately) Page No.-12 Item No.-19-(a). PWD,VOL-II , 2017-18									
	(a) For Exposed Work PVC Pipes, 25 mm					45.00	45.00	Mtr	177.00	7965.00
	(b) For Exposed Work PVC Pipes, 15 mm					20.00	20.00	Mtr	101.00	2020.00
	(c) For Concealed Work PVC Pipes, 15 mm					20.00	20.00	Mtr	137.00	2740.00
70	Supplying and fitting fixing of gunmetal wheel valve of approved brand and make tested to 21 Kg per sq. cm. 25 mm dia (for water lines only). PWD S&P Schedule, P-5 It-5,vii),	1	4.00			4.00	4.00	Each	778.00	3112.00
71	Supplying P.V.C. water storage tank of approved quality with closed top with lid (Black) - Multilayer (b) 1000 litre capacity PWD S&P Schedule, page 37, item no-6 (b)	1	2.00			2.00	2.00	Each	5128.00	10256.00
72	Labour for hoisting plastic water storage tank. (i) Upto 1500 litre capacity. (a) Upto 1st story from G.L. PWD S&P Schedule, page 37, item no-10 (i)(a)	1	2.00			2.00	2.00	Each	96.00	192.00
73	Labour for punching hole in plastic water storage tank upto 50 mm dia. PWD S&P Schedule, (P. No. - 38, Item. No. - 13	2	4.00			8.00	8.00	Each	19.00	152.00





SL.NO	Item Description & Item No.	Nos	L	B	H	Qty	Total Quantity	Unit	Rate	Amount
74	Supply of UPVC pipes (B Type) & fittings conforming to IS-13592- 1992. PWD S&P Schedule, Page No.-68 Item No. 23,(A)(i)(b)									
	(A) (i) Single Socketed 3 Meter Length, (b) 110 mm					50.00	50.00	Mtr	292.00	14600.00
75	(B) Fittings									
	a) (i) Coupler, (b) 110 mm	2	8.00			16.00	16.00	Each	85.00	1360.00
	b) (ii) Plain Tee, (b) 110 mm	1	20.00			20.00	20.00	Each	85.00	1700.00
	c) (iii) Door Tee, (b) 110 mm	1	10.00			10.00	10.00	Each	195.00	1950.00
	d) (ix) Bend 45°, (b) 110 mm	1	10.00			10.00	10.00	Each	89.00	890.00
	e) (xi) Door Bend (T.S.), (b) 110 mm	1	7.00			7.00	7.00	Each	147.00	1029.00
	f) (xvi) Pipe Clip, (b) 110 mm	1	30.00			30.00	30.00	Each	21.00	630.00
	g) (xvii) W.C. Connector (150 mm long) 125 X 110(W/WC Ring) 75 mm	1	10.00			10.00	10.00	Each	142.00	1420.00
	h) (xxx) Plain Floor Trap with Top tile & Strainer 75 mm	1	14.00			14.00	14.00	Each	144.00	2016.00
	i) (L) Rubber Ring, (b) 110 mm	1	30.00			30.00	30.00	Each	17.00	510.00
	j) (C) Rubber Lubricant 500 ML	1	1.00			1.00	1.00	500 ML	187.00	187.00
	k) (D) Solvent Cement 250 ML	1	1.00			1.00	1.00	250 ML	103.00	103.00
76	Labour for fitting and fixing U.P.V.C. pipes for above ground work including cost of jointing materials etc. fitting and fixing all necessary specials, cutting pipes, cutting holes in total pipeline including specials. (B) Under ground, (ii) 110 mm dia. PWD S&P Schedule, (P. - 74, Item. No. - 24 (B)									
						50.00	50.00	Mtr	84.00	4200.00
77	Labour for boring tube well of required dia. by water jet system through any type of soil strata including hire and labour charges for boring pipes, scaffolding, tools and plants as necessary and taking out them and lowering pipes, strainers, blind pipe etc. and fitting and fixing the same complete including bucket washing and other incidental works in the connection. The tube well should have a minimum 50 mm gap in between the outside of the tubewell pipe and the bore. [S & P 49/1 (i)]									
	(a) For depth upto 150 metre.									
	(i) 40 mm dia. boring etc.	10	3.00			30.00	30.00	Mtr	90.00	2700.00
78	Supplying PVC strainer of approved make with adapter conforming to I.S.12818 specifications.[S & P 52/8]									
	(i) 40 mm dia.	1	4.00			4.00	4.00	Mtr	293.00	1172.00
79	Supply of PVC pipes & fittings Schedule 80 (medium duty) conforming to ASTM D - 1785 and threaded to match with GI Pipes as per IS : 1239 (Part - I).[S& P96/1]									
	(e) 40 mm dia.(ii) Medium quality	1	26.00			26.00	26.00	Mtr	207.00	5382.00
80	Supplying of 1.0 HP Motor Cromton Grives SWJ	1	1.00			1.00	1.00	Nos	10004.00	10004.00
81	Supplying, fitting & fixing UPVC pipes A- Type and fittings conforming to IS:13592-1992 with all necessary clamps nails, including making holes in walls, floor etc. cutting trenches in any soil through masonry concrete structures etc if necessary and mending good damages including joining with jointing materials (Spun Yarn, Valamoid/Bitumen/M-Seal etc) complete. (P. - 212, Item. No. - 21 (A)(i) , (B),(c),(i) & (B), (d),(i), Pwd volume- i, 2017)									
	A) UPVC Pipes: (i) 75 mm. Dia.	2	18.00			36.00	36.00	Mtr	188.00	6768.00
	i) (B) UPVC Fittings: c) Bend 87.5 degree (i) 75 mm. Dia.	2	3.00			6.00	6.00	Mtr	95.00	570.00
	ii) (B) UPVC Fittings: d) Shoe (i) 75 mm. Dia.	2	3.00			6.00	6.00	Mtr	76.00	468.00

SL.NO	Item Description & Item No.	Nos	L	B	H	Qty	Total Quantity	Unit	Rate	Amount		
		1	16.00			16.00	16.00	Each	430.00	6880.00		
86	Supplying, fitting and fixing bevelled edged mirror 5.5 mm thick silver red as per I.S. 3438 / 1985 together with brass C.P. hinges. (ii) 600 mm X 450 mm PWD S&P Schedule, P-81, It-15(ii)											
		1	6.00			6.00	6.00	Each	484.00	2904.00		
87	Supplying, fitting and fixing soap holder. (b) Fibre glass Sanitary and plumbing work schedule P-82, It-18(b)											
		1	10.00			10.00	10.00	Each	58.00	580.00		
88	Supplying, fitting and fixing glass shelf with aluminium guard rails (a) Ordinary type with 5.5 mm sheet glass (i) 450 mm X 125 mm Sanitary and plumbing work schedule P-81, It-16(a)(i)											
		1	5.00			5.00	5.00	Each	341.00	1705.00		
									Rs	1816560.36		
									Rs	1816560.00		
									Add S.G.S.T. @	9.00%	Rs	163490.40
									Add C.G.S.T. @	9.00%	Rs	163490.40
									Cost Of Civil Work		Rs	2143540.80
									Add Labour.Welfare.Cess. @	1.00%	Rs	21435.41
									Total Amount Including Labour.Welfare.Cess.		Rs	2164976.21
									Add Contengency @	3.00%	Rs	64949.29
									Total Amount including L.W.C. and		Rs	2229925.50

Say Rs 2229926.00

*S.A.E*  
20/11/2026  
Balurghat Municipality

*Assistant Engineer*  
Balurghat Municipality

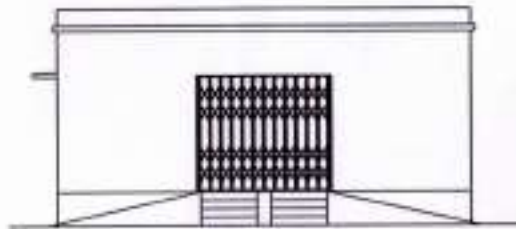
*Chairman*  
Balurghat Municipality

*Damang*  
20.11.26.  
Junior Engineer  
Balurghat Sub-Division  
Under Malda Division  
Municipal Engineering Directorate  
Deptt. of UD & MA  
Govt. of West Bengal

May be Vetted  
*20/11/26*  
Assistant Engineer  
Balurghat Sub-Division  
Under Malda Division  
Municipal Engineering Directorate  
Deptt. of UD & MA  
Govt. of West Bengal

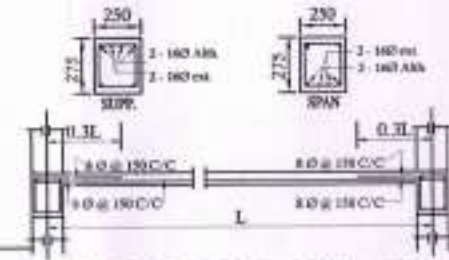
Vetted  
*20/11/26*  
Executive Engineer  
MALDA DIVISION  
Municipal Engineering Directorate  
Deptt. of UD & MA  
Govt. of West Bengal

MODEL DRAWING FOR CONSTRUCTION OF C T / PT TOILET SEAT 7 NOS, URINAL 10 NOS MODLE NO.- E



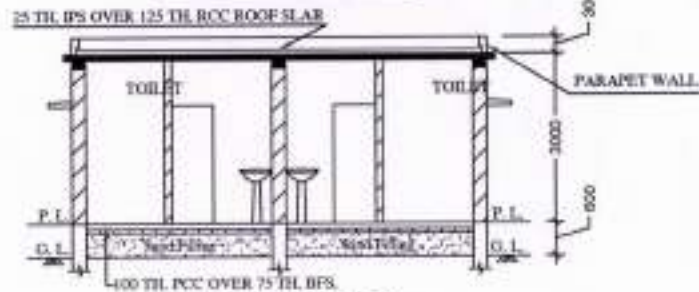
FRONT ELEVATION

DOOR D 1000 X 2100  
 DOOR D<sub>1</sub> 750 X 2100  
 DOOR D<sub>2</sub> 800 X 2100  
 WINDOW W 750 X 1200  
 VENTILATOR V 750 X 600

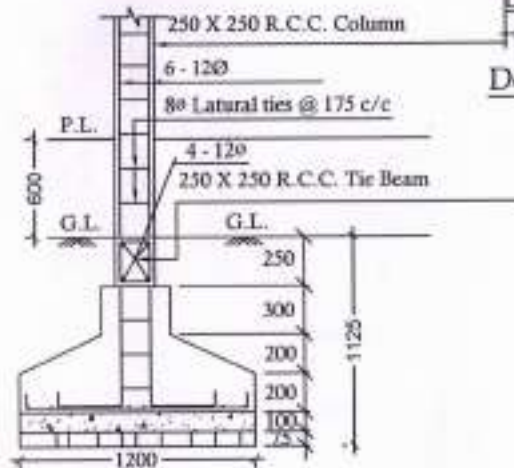


Details Of R.C.C Roof Slab & Beam

(SCALE - 1:25)



SECTION - 'X-X'

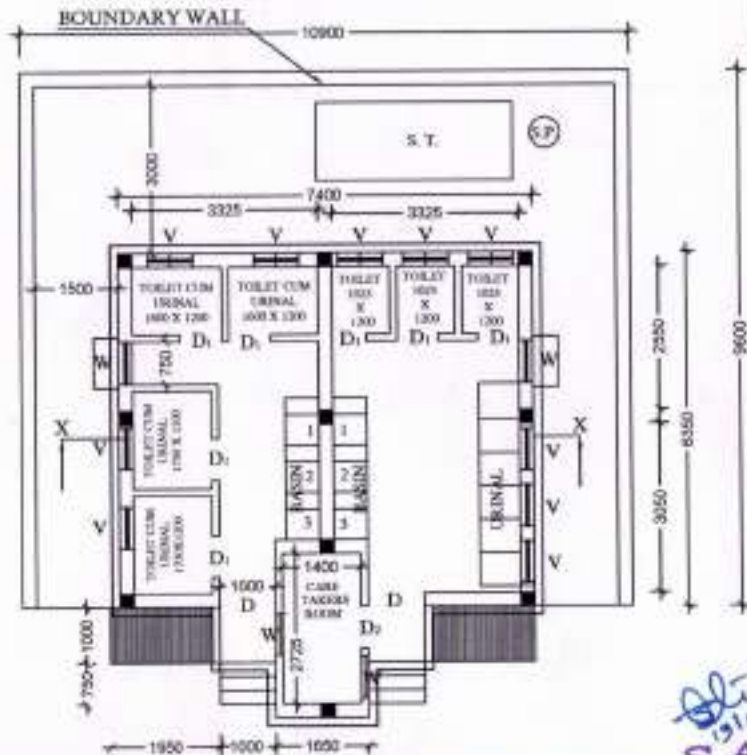


10Φ Bothways @ 125 c/c

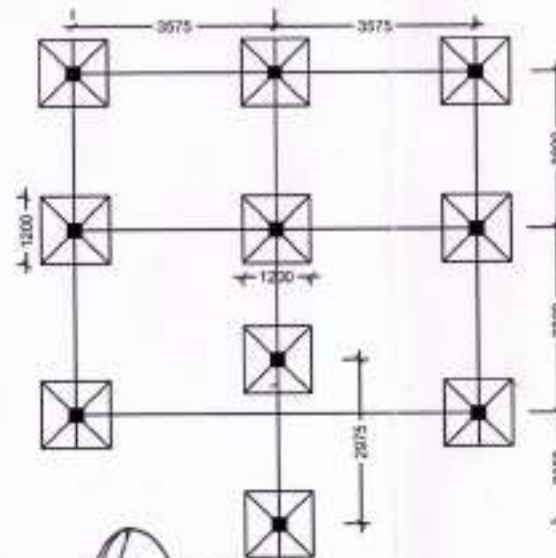


DETAILS OF R. C. C COLUMN

(SCALE - 1:25)



PLAN PLINTH AREA = 52.54 SQM



Assistant Engineer  
 Bahurghat Municipality  
 Bahurghat Municipality  
 Assistant Engineer

Chairman  
 Bahurghat Municipality

S.A.E  
 Bahurghat Municipality