

ESTIMATE FOR CONSTRUCTION OF COMMUNITY TOILET AT NARUL PALLY MASSID WARD-16, PLOT NO-338, MOUZA-FAUZILLABAD, JL-96 UNDER SAINTHIA MUNICIPALITY OF WEST BENGAL (MODEL NO - F) TOILET SEATS - 2 NOS AND URINAL - 3 NOS

Reference of schedule of Rate :- PWD (W.B.), BUILDING WORKS, [with effect from 01.11.2017]
 Incorporation of GST Act, 2017 & All addenda & Corrigenda of SOR, 01.12.2015.
 PWD schedule of rates: Building and Sanitary & Plumbing w.e.f 01.11.2017

| SL.NO | Item Description & Item No. | Total Quantity | Rate | Unit | Amount |
|-------|---|----------------|---------|-------|----------|
| 1 | Earth work in excavation of foundation trenches or drains, in all sorts of soil (including mixed soil but excluding laterite or sandstone) including removing, spreading or stacking the spoils within a lead of 75 m. as directed. The item includes necessary trimming the sides of trenches, levelling, dressing and ramming the bottom, bailing out water as required complete. (a) Depth of excavation not exceeding 1,500 mm. PWD Building Works schedule Page - 1, Item - 2.a | 5.816 | 119.27 | Cum | 693.67 |
| 2 | Earth work in filling in foundation trenches or plinth with good earth, in layers not exceeding 150 mm. including watering and ramming etc. layer by layer complete. (Payment to be made on the basis of measurement of finished quantity of work). (a) With earth obtained from excavation of foundation. PWD Building Works schedule, Page - 1, Item - 3.a 1/5 = 1.163m ³ | 1.163 | 77.54 | Cum | 90.18 |
| 3 | (A) Filling in foundation or plinth by silver sand in layers not exceeding 150 mm as directed and consolidating the same by thorough saturation with water, ramming complete including the cost of supply of sand. (payment to be made on measurement of finished quantity) PWD Building Works schedule, Page - 2, Item - 4.a 1 x 4.850 x 2.8250 x 0.325 = 4.453 m ³ | 4.453 | 572.55 | Cum | 2549.57 |
| 4 | Single Brick Flat Soling of picked Jhama bricks including ramming and dressing bed to proper level and filling joints with local sand. PWD Building Works schedule, Page - 14, Item - 1 (Corri. Page-01, Date-04-06-2018) | 21.710 | 266.00 | Sqm | 5774.86 |
| 5 | Ordinary Cement concrete (mix 1:1.5:3) with graded stone chips (20 mm nominal size) excluding shuttering and reinforcement, if any, in ground floor as per relevant IS codes. a) Pakur Variety / Chandil Variety PWD Building Works schedule, p-26 Item 10 a (Rate Analysis) | 7.519 | 4846.48 | Cum | 36440.68 |
| 6 | In ground floor (A) [Pakur Variety] (a) 1:3:6 proportion Page - 34, Item - 22, 1(A) Date-04-06-2018 PWD Building Works schedule, Rate Analysis 1 (Corri. Page-3RD, Date-04-06-2018) | 2.434 | 4105.52 | Sqm | 9992.84 |
| 7 | 25mm. thick damp proof course with cement concrete with stone chips (1:1.5:3) [with graded stone aggregate 10 mm nominal size] and admixture of water proofing compound as per manufacturer's specification followed by two coat of polymer based paint, (1st coat after 4 to 5 days of concrete laying and 2 nd coat just before brick masonry work) as directed (cost of water proofing compound & polymer based paint to be paid separately). (Note: Chenequing not required over concrete or painted surface). [Note: - Waterproofing as per item 9, polymer based paint as per item 8 (a) of subhead C of Section (C). PWD Building Works schedule, Page - 47, Item - 1 (Rate Analysis) | 4.544 | 169.16 | Sqm | 768.66 |
| 8 | 125 mm brick work with 1st class bricks in cement mortar (1:4) in ground floor. PWD Building Works schedule, Page - 16, Item - 16, Corri page - 3, date - 04.06.2018 (Rate Analysis) 3x1.00 x 3.00 = 9.00 m ² 5 x 1.20 x 3.00 = 18.00 m ² | 27.000 | 584.53 | Sq.M. | 15782.31 |

| | | | | | |
|----|---|--------|------------------|------|--------------------|
| 9 | supplying and laying polythine sheet (150 gm/sqm) over damp proof course or below flooring or roof terrace or foundation or foundation trenches. | 37.870 | 24.00 | Sq.m | 908.88 |
| 10 | Item-3 PWD Building Works schedule, Page-47, Hire and labour charges for shuttering with centering and necessary staging upto 4 m using approved stout props and thick hard wood planks of approved thickness with required bracing for concrete slabs, beams and columns, lintels curved or straight including fitting, fixing and striking out after completion of works (upto roof of ground floor) (f) 25 mm to 30 mm shuttering without staging in foundation PWD Building Works schedule, Page-42, Item-36.f | 10.555 | 205.00 | Sqm | 2163.78 |
| 11 | Item-36.a PWD Building Works schedule, Page-42, Item-36.a Hire and labour charges for shuttering with centering and necessary staging upto 4 m using approved stout props and thick hard wood planks of approved thickness with required bracing for concrete slabs, beams and columns, lintels curved or straight including fitting, fixing and striking out after completion of works (upto roof of ground floor) (a) 25 mm to 30 mm thick wooden shuttering as per decision & direction of Engineer-In-Charge. Artificial stone in floor, dado, staircase etc with cement mortar (1:2:4) with stone chips listed in panels as directed with topping made with ordinary or white cement (as necessary) and marble dust in proportion (1:2) including smooth finishing and rounding off corners including raking out joints or roughening of concrete surface and application of cement slurry before flooring works using cement @ 1.75 kg/sq.m all complete including all materials and labour. 3 mm thick topping using gray cement (ii) 25 mm PWD Building Works schedule, p-48 Item 6(ii) | 26.058 | 363.00 | Sqm | 9459.05 |
| 12 | Reinforcement for reinforced concrete work in all sorts of structures including distribution bars, stirrups, binders etc initial straightening and removal of loose rust (if necessary), cutting to requisite length, hooking and bending to correct shape, placing in proper position and binding with 16 gauge black annealed wire at every intersection, complete as per drawing and direction. (a) For works in foundation and upto roof of ground floor/upto 4 m. (i) For steel/Mild Steel, JSPL/SWAYN/ELFTR/STEEEL PWD Building Works schedule, Page - 43, Item - 40.a.1 (Corr. 10th Page-01, Date-23-01-2020) (Rate Analysis) Item no, vol of conc. 7.519x1.20 % = 0.090 m ³ x 35.315 c.ft = 3.186 c.ft x 225 kg = 717.00 kg = 0.717 MT | 13.700 | 269.00 246.01 | Sqm | 3288.14 3685.30 |
| 13 | Collapsible gate with 40 mm x 10 mm x 6 mm Tee as top and bottom guide rail, 20 mm x 10 mm x 2 mm vertical channels 100 mm apart in full stretched position 20m x 5 mm MS flats as collapsible bracings properly reeved and washered including 38 mm steel roller including locking arrangements, fitted and fixed in position with lugs set in cement concrete including cutting necessary hives chasing etc in walls, floors etc and making good all damages. PWD Building Works schedule, Page-106, Item-18 | 0.717 | 54439.07 | M.T. | 39032.81 |
| 14 | Brick work with 1st class bricks in cement mortar (1:4) PWD Building Works schedule, Page-106, Item-18 | 4.200 | 4330.00 | Sqm | 18186.00 |
| 15 | (a) Foundation and plinth ground floor PWD Building Works schedule, Page-15, Item-7.a (Rate Analysis) | 3.776 | 4198.06 | Cu.m | 15851.87 |
| 16 | Brick work with 1st class bricks in cement mortar (1:4) (b) superstructure ground floor PWD Building Works schedule, Page-15, Item-7.b (Rate Analysis) | 13.631 | 4421.06 | Cu.m | 60263.47 |
| 17 | Labour for Chipping of concrete surface before taking up Plastering work. PWD Building Works schedule, P-192, It-1 | 13.700 | 21.00 | Sqm | 287.70 |

| | | | | | |
|----|---|---------|---------|------|--------------------|
| 28 | 136.56 + 13.70 = 150.26 M ² PWD Building Works schedule, PWD, P-198, I-5 Floor PROOF wall putty of approved make & brand. (1.5 mm thick) In Ground Rendering the Surface of walls and ceiling with White Cement base WATER | 150.260 | 122.00 | Sqm | 18331.72 |
| 27 | PWD Building Works schedule, Page -74, Item no-46(i). 25 mm thick for joint filling). materials. (Using cement slurry @4.4kg/sq.m at back side and @2.4 kg/sq.m (avg) cement mortar (1:3) complete in all respect with all labour and pavement, footpath etc including necessary underlay 25 mm thick with (1:1.5:3) cement concrete lated in pannels or patterns as directed in Supplying and laying chequered tiles of any shade and of approved quality | 4.130 | 453.00 | sq.m | 1883.28 1870.89 |
| 26 | PWD Building Works schedule, Page -141. Item no-10 b) 250mm long. 16mm dia rod with concrete bolt and round fitting. Iron hasp bolt of approved quality fitted and fixed complete (oxidised) with | 2.000 | 159.00 | Each | 318.00 |
| 25 | PWD Building Works schedule, Page -146. Item no-31,(i) (i) 150mm plate x 10mm dia rod x 12mm hexagonal/fluted. quality fitted and fixed complete. Anodised aluminium decorative handle (hexagonal / fluted) of approved | 10.000 | 87.00 | Each | 870.00 |
| 24 | PWD Building Works schedule, P-140, It No.-5 (viii) steel screws, with ISI mark. (viii) 100mm X 75mm X 3.50mm. Iron butt hinges of approved quality fitted and fixed with | 15.000 | 66.00 | Each | 990.00 |
| 23 | PWD Building Works schedule, P-144, It No. 26 (vii) fixed with cadmium plated screws. (vii) 225mm long x 10mm dia. bolt. manufactured from extruded section conforming to I.S. 204/74 fitted and Anodised aluminium barrel / tower / socket bolt (full covered) of approved | 5.000 | 84.00 | Each | 420.00 |
| 22 | PWD Building Works schedule, P-125, It- 14(ii) 2 x 2.10 x 0.75 = 3.15 m ² ground floor. Technology (DST) to satisfy IS:4020 door testing performance criteria. In structure as per approved technology of Department of Science and skins and a special sandwich core, so as to impart monolithic composite shutters as per approved design with glass fibre reinforced plastic moulded Supplying, fitting & fixing fibre reinforced polymer (FRP) Composite door | 3.150 | 2581.00 | sq.m | 8130.15 |
| 21 | PWD Building Works schedule, P-115, It- 3 (i) Supplying, fitting and fixing fibre reinforced polymer (FRP) Composite door frame as per approved section with glass fibre reinforced plastic moulded skins and a special sandwich core, so as to impart monolithic composite structure as per approved technology of Department of Science and Technology (DST) to satisfy IS: 4020 door testing performance criteria. (i) 66mm x 90mm | 9.900 | 497.00 | MTR | 4920.30 |
| 20 | 192 It- No. 15 etc . Note cement 0.152 m ³ /100 m ² PWD Building Works schedule, P- Near cement punning about 1.5 mm thick in wall, dado, window sills, floors | 11.510 | 32.76 | Sqm | 377.07 |
| 19 | PWD Building Works schedule, P-189 It- No. 1 (ii)(c) (Rate Analysis) thick plaster (ii) With 1:4 cement mortar necessary (Ground floor). [Excluding cost of chipping over concrete surface] including throating, nosing and drip course, scaffolding/staging where rounding off or chamfering corners as directed and raking out joints Plaster (to wall, floor, ceiling etc.) with sand and cement mortar including | 13.700 | 119.55 | Sqm | 1637.84 |
| | PWD Building Works schedule, P-189 It- No. 1 (Rate Analysis) (i) With 1:6 cement mortar necessary (Ground floor). [Excluding cost of chipping over concrete surface] including throating, nosing and drip course, scaffolding/staging where rounding off or chamfering corners as directed and raking out joints Plaster (to wall, floor, ceiling etc.) with sand and cement mortar including | 136.560 | 132.55 | Sqm | 18101.03 |

| | | | | | |
|----|--|--------|-------|----------------|---------|
| 30 | Applying interior grade Acrylic Primer of approved quality and brand on plastered and concrete surface old or new surface to receive Distemper thoroughly, complete as per manufacturer's specification and as per direction of the E-I-C (Ground Floor) (b) Two Coats PWD Building Works schedule, Page -74, Item no- 46(i). $44.63 + 19.20 + 13.90 - 13.70 = 66.03 \text{ M}^2$ | 66.030 | 44.20 | m ² | 2918.53 |
| 31 | Applying exterior grade Acrylic Primer of approved quality and brand on plastered or concrete surface old or new surface to receive Decorative Textured (Marble Finish) or Smooth Finish Acrylic exterior emulsion paint including scraping and repairing the surface thoroughly, complete as per manufacturer's specification and as per direction of the EIC in Ground Floor (b) two coats. PWD Building Works schedule, Page -196, Item no- 8(b) | 57.700 | 45.10 | m ² | 2602.27 |
| 32 | Protective and Decorative Acrylic Exterior emulsion paint of approved quality, as per manufacturer's specification and as per direction of EIC to be applied over Acrylic primer as required. The rate includes cost of materials, labour, scaffolding and all incidental charges but excluding the cost of primer in ground floor (two coats)(a) normal acrylic emulsion. PWD Building Works schedule, Page -197, Item no- 17(a) $79.69 + 18.00 + 36.00 = 136.69 \text{ m}^2$ | 57.700 | 67.00 | m ² | 3865.90 |
| 33 | (b) Priming one coat on timber or plastered surface with synthetic oil bound primer of approved quality including smoothing surfaces by sand papering etc. PWD Building Works schedule, Page -200, Item no- 1 (b) | 6.350 | 38.00 | Sqm | 241.30 |
| 34 | (a) M.S. or W.I. Ornamental grill of approved design joints continuously welded with M.S. W.I. Flats and bars of windows, railing etc. fitted and fixed with necessary screws and lugs in ground floor. (i) Grill weighing above 10 Kg./sq.mtr and up to 16 Kg./sq. mtr. PWD Building Works schedule, P-104 Item-13 A (i) (3rd Corrigendum Page No 91) $64 \times 0.600 \times 0.600 = 1.44 \text{ m}^2$ $= 1.44 \text{ m}^2 \times 10.00 \text{ kg} = 14.40 \text{ kg} = 0.144 \text{ qtl}$ | 6.350 | 81.00 | Sqm | 514.35 |
| 35 | (A) Painting with best quality synthetic enamel paint of approved make and brand including smoothing surface by sand papering etc. including using of approved putty etc. on the surface, if necessary : (b) On steel or other metal surface : (iv) Two coats (with any shade except white) PWD Building Works schedule, P/200 Item-1(a) | 5.640 | 29.00 | Sqm | 163.56 |
| 36 | (a) Priming one coat on steel or other metal surface with synthetic oil bound primer of approved quality including smoothing surfaces by sand papering etc. PWD Building Works schedule, P/200 Item-1(a) | 5.640 | 79.00 | Sqm | 445.56 |
| 37 | (a) M.S. or W.I. Ornamental grill of approved design joints continuously welded with M.S. W.I. Flats and bars of windows, railing etc. fitted and fixed with necessary screws and lugs in ground floor. (i) Grill weighing above 10 Kg./sq.mtr and up to 16 Kg./sq. mtr. PWD Building Works schedule, P-104 Item-13 A (i) (3rd Corrigendum Page No 91) $64 \times 0.600 \times 0.600 = 1.44 \text{ m}^2$ $= 1.44 \text{ m}^2 \times 10.00 \text{ kg} = 14.40 \text{ kg} = 0.144 \text{ qtl}$ | 5.640 | 79.00 | Sqm | 445.56 |

| | | | | | | |
|----|--|---------|---------|-------|----------|----------|
| 47 | PWD Building Works schedule, Page-261, It-9 (xxvi) size 25 cm. xxvi) Areca Palm 4 - 5 suckers of height 90 cm to 105 cm in earthen pots of | 3.000 | 127.00 | Each | 381.00 | 0.00 |
| 46 | PWD Building Works schedule, Page-261, It-9 (x) in earthen pot of size 30cm. x) Ficus blakii (F. Vivicon) well branched (Bushy) of height 120cm - 135 cm | 3.000 | 187.00 | Each | 561.00 | |
| 45 | Supplying and planting of different plants / trees (supplying well grown plants bushy and healthy, minimum height as specified i.e. exposed height including all leads and lifts, carriage, handling, manuring applying pesticide and fertilizer etc. i) Furcaria Vertegated 10 to 12 leaves in height 20-30 cm in earthen pot of size 25 cm | 10.000 | 162.00 | Each | 1620.00 | |
| 44 | PWD Building Works schedule, P-268, It-17(e) e) Size above 7.5 cm. and upto 10 cm. direction. Painting block letters or digits in Black Japan or any approved paint as per | 450.000 | 12.00 | Each | 5400.00 | |
| 43 | Painting block letters or digits in Black Japan or any approved paint as per schedule, P-243, I-9 iv) 5mm thick coloured / tinted / smoke glass. PWD Building Works schedule, P-243, I-9 IS: 2835-1987. | 1.080 | 585.00 | Sq.M. | 631.80 | |
| 42 | Supplying bubble free float glass of approved make and brand conforming to iii) Clear angle (Non-annodized). | 7.200 | 658.00 | MTR | 4737.60 | |
| 41 | Supplying bubble free float glass of approved make and brand conforming to ii) Louvered Section. | 6.480 | 263.00 | MTR | 1704.24 | |
| 40 | Supplying profiles of required section made of Aluminium Alloy Extrusions conforming to IS: 732-1983 and IS: 1285-1975; Annodized (with required film thickness and specified colour / natural) matt finished conforming to IS: 1868-1983 for fabrication of composit door, sliding & casement windows, partitions, formed of basic sections of any ISI embossed / certified make and brand as per direction of Engineer - In-Charge. (Payment will be made on finished length of the work). (A) In 10-12 Micron thickness Annodizing film i) Natural white h) Louvered window. bottom and side member. PWD Building Works schedule, PWD, P-233, I-1(h) i | 6.500 | 183.00 | MTR | 1189.50 | |
| 39 | Supplying, fitting & fixing 1st quality Ceramic tiles in walls and floors to match with the existing work & 4 nos. of key stones (10mm) fixed with araldite at the back of each tile & finishing the joints with white cement mixed with colouring oxide if required to match the colour of tiles including roughening of concrete surface, if necessary or by synthetic adhesive & grout materials etc. B) Wall Area of each tile above 0.09 Sq.m ii) Other than Coloured decorative including white PWD Building Works schedule, page-64, Item:35.(B.) (b).(ii) (3rd Corrigendum, Page 36) 2) 4.85 + 2.8250) x 2.10 = 36.84 m2 1x2 x 2.325 x 2.10 = 9.77m2 2 x 2 x 1.60 x 2.10 = 13.44 m2 | 60.050 | 1047.00 | Sqm | 62872.35 | 61791.45 |
| 38 | Supplying and laying true to line and level vitrified tiles of approved brand (size not less than 600 mm X 600 mm X 10 mm thick) in floor, skirting etc. set in 20 mm sand cement mortar (1:4) and 2 mm thick cement slurry back side of tiles using cement @ 2.91Kg/sqm or using polymerised adhesive (6 mm thick layer applied directly over finished artificial stone floor/Mosaic etc without any backing course) laid after application slurry using 1.75 kg of cement per sqM below mortar only, joints grouted with admixture of white cement and colouring Pigment to match colour of tiles / epoxy grout materials of approved make as directed and removal of wax coating of top surface of tiles with warm water and polishing the tiles using soft and dry cloth upto mirror finish complete including the cost of materials, labour and all other incidental charges complete true to the manufacturer's specification and direction of Engineer-in-Charge. (White cement, synthetic adhesive and grout material to be supplied by the contr[e]) i) With application slurry @ 1.75 kg/ Sq.m, 20 mm sand cement mortar (1:4) & 2 mm thick cement slurry at back side of tiles, 0.2 kg/ Sq.m white cement for joint filling with pigment (A) Deep Colour & White PWD Building Works schedule, Page-66 Item-36 (A) (3rd Floor | 13.700 | 1676.00 | Sqm | 22961.20 | 23002.30 |

| | | | | | |
|----|---|-------|---------|------|----------|
| 48 | Supplying, fitting and fixing Anglo-Indian W.C. in white glazed vitreous china ware of approved make complete in position with necessary bolts, nuts etc. a) With 'P' trap (with vent) PWD S&P Schedule, page-79, item no - 3 (a) | 5.000 | 3104.00 | Each | 15520.00 |
| 49 | Supplying, fitting and fixing Closet seat of approved make with lid and C.P. hinges, rubber buffer and brass screws complete. (b) Anglo Indian hinges, rubber buffer and brass screws complete. (a) Anglo Indian (i) Plastic (hallow type) White PWD S&P Schedule, page-81, item no 10.b.i | 2.000 | 380.00 | Each | 760.00 |
| 50 | Supplying, fitting and fixing Flat back urinal (half stall urinal) in white vitreous chinaware of approved make in position with brass screws on 75 mm X 75 mm X 75 mm wooden blocks complete (ii) 470 mm X 280 mm X 340 mm PWD S&P Schedule, page-80, item no-6/(ii) | 2.000 | 945.00 | Each | 1890.00 |
| 51 | Supplying fitting and fixing squatting plate with integrated flushing in white vitreous set in cement concrete (6:3:1) with jhama chips complete. (Payment of concrete will be paid seperately) (1) 450 mm x 350 mm | 2.000 | 881.00 | each | 1762.00 |
| 52 | Supplying, fitting and fixing 10 litre P.V.C. low-down cistern conforming to I.S. specification with P.V.C. fittings complete, C.I. brackets including two coats of painting to bracket etc. PWD S&P Schedule, Page No.-36 Item No.-2, | 2.000 | 1015.00 | Nos | 2030.00 |
| 53 | Supplying, fitting and fixing 32 mm dia. Flush Pipe of approved make with necessary fixing materials and clamps complete. i) Polythene Flush Pipe PWD S&P Schedule, Page no 81. Item no. 11(i) | 2.000 | 155.00 | Each | 310.00 |
| 54 | Supplying, fitting and fixing urinal flush pipe fittings of approved brand. (a) C.P. urinal flush pipe fittings range of one PWD S&P Schedule, S.P.81, item 12/a | 2.000 | 414.00 | Each | 828.00 |
| 55 | Supplying, fitting and fixing white vitreous china best quality approved make wash basin with C.I. brackets on 75 mm X 75 mm wooden blocks, C.P. waste fittings of 32 mm dia., mending good all damages and painting the brackets with two coats of approved paint. (ii) 550 mm X 400 mm size PWD S&P Schedule, P-41, It 2 (ii) | 2.000 | 2208.00 | Each | 4416.00 |
| 56 | Supplying fitting and fixing pedestal of approved make for wash basin (White) PWD S&P Schedule, P-41, It 3 | 2.000 | 1497.00 | Each | 2994.00 |
| 57 | Supplying, fitting and fixing approved brand P.V.C. CONNECTOR white flexible, with both ends coupling with heavy brass C.P. nut, 15 mm dia., (iii) 600 mm long PWD S&P Schedule, Page No.-43 Item No.-9-iii | 5.000 | 107.00 | Each | 535.00 |
| 58 | Supplying, fitting and fixing approved brand 32 mm dia. P.V.C. waste pipe, with PVC coupling at one end fitted with necessary clamps. (iv) 1050 mm long each PWD S&P Schedule, Page No.-43 Item No. 10-iv | 2.000 | 91.00 | Each | 182.00 |
| 59 | Hook (Equivalent to Code No. 573 & Model -ALLIED of Jaquar or similar). PWD S&P Schedule, Page No.-3 Item No.- 3 f | 2.000 | 1251.00 | Each | 2502.00 |
| 60 | (a) (i) Chromium plated Bib Cock short body (Equivalent to Code No. 511 & Model - Tropical / Sumthing Special of ESSCO or similar brand). PWD S&P Schedule, Page No.-6 Item No.-7-a-i | 5.000 | 539.00 | Each | 2695.00 |
| 61 | (b) (i) Chromium plated Stop Cock (Equivalent to Code No. 513(A) & 513(B) & Model - Tropical / Sumthing Special of ESSCO or similar PWD S&P Schedule, Page No.-6 Item No.-7-b-i | 3.000 | 493.00 | Each | 1479.00 |
| 62 | Chromium plated angular Stop Cock with wall flange (Equivalent to Code No. 5053 & Model - Florentine of Jaquar or similar brand). PWD S&P Schedule, Page No.-6 Item No.-7-d-i, | 3.000 | 815.00 | Each | 2445.00 |

| | | | | | |
|----|---|--------|---------|--------|----------|
| 63 | Supplying, fitting and fixing pillar cock of approved make. a) (i) CP Pillar Cock - 15 mm. (Equivalent to Code No. 507 & Model - Tropical / Sumthing Special of ESSCO or similar brand). (P. No. - 45, Item. No. - 19(a) i, Pwd Sanitary Plumbing Schedule 2017) | 2.000 | 555.00 | Each | 1110.00 |
| 64 | Supplying, fitting and fixing PVC pipes of approved make of Schedule 80 (medium duty) conforming to ASTM D - 1785 and threaded to match with GI Pipes as per IS : 1239 (Part - I), with all necessary accessories, specials viz. socket, bend, tee, union, cross, elbo, nipple, long screw, reducing socket, reducing tee, short piece etc. fitted with holder bats clamps, including cutting pipes, making threads, fitting, fixing etc. complete in all respect including cost of all necessary fittings as required, joining materials and two coats of painting with approved paint in any position above ground. (Payment will be made on the centre line measurements of total pipe line including all specials. No separate payment will be made for accessories, specials. Payment for painting will be made separately) (a) For Exposed Work PVC Pipes, 25 mm Page No.-12 Item No.-19-i(a), PWD, VOL-II, 2017-18 | 15.000 | 177.00 | Mtr | 2655.00 |
| 65 | (a) For Exposed Work PVC Pipes, 15 mm Page No.-12 Item No.-19-i(a), PWD, VOL-II, 2017-18 (b) For Concealed Work PVC Pipes, 15 mm Page No.-12 Item No.-19-i(b), PWD, VOL-II, 2017-18 | 10.000 | 101.00 | Mtr | 1010.00 |
| 66 | Supplying and fitting fixing of gunmetal wheel valve of approved brand and make tested to 21 Kg per sq. cm. 25 mm dia (E5) PWD S&P Schedule, P-5 It-5, vii) | 2.000 | 778.00 | Each | 1556.00 |
| 67 | Supplying P.V.C. water storage tank of approved quality with closed top with lid (Black) - Multilayer PWD S&P Schedule, page:3,7, item no-6 (b) (b) 1000 litre capacity Labour for hoisting plastic water storage tank. | 2.000 | 5128.00 | Each | 10256.00 |
| 68 | (i) Upto 1500 litre capacity. (a) Upto 1st story from G.L. PWD S&P Schedule, page:3,7, item no-10 (i) (a) Labour for punching hole in plastic water storage tank upto 50 mm dia. PWD S&P Schedule, (P. No. - 38, Item. No. - 13 | 4.000 | 19.00 | Each | 76.00 |
| 70 | Supply of UPVC pipes (B Type) & fittings conforming to IS-13592-1992.(A) (i) Single Socketed 3 Meter Length, (b) 110 mm PWD S&P Schedule, Page No.-68 Item No.23,(A)(i)(b) | 30.000 | 292.00 | Mtr | 8760.00 |
| 71 | (i) Coupler, (b) 110 mm (ii) Plain Tee, (b) 110 mm (iii) Door Tee, (b) 110 mm (ix) Bend 45°, (b) 110 mm (xi) Door Bend (T.S.), (b) 110 mm (xvi) Pipe Clip, (b) 110 mm (xvii) W.C. Connector (150 mm long) 125 X 110(W/WC Ring) 75 mm (xxx) Plain Floor Trap with Top tile & Strainer 75 mm | 8.000 | 85.00 | Each | 680.00 |
| 72 | (i) Coupler, (b) 110 mm (ii) Plain Tee, (b) 110 mm (iii) Door Tee, (b) 110 mm (ix) Bend 45°, (b) 110 mm (xi) Door Bend (T.S.), (b) 110 mm (xvi) Pipe Clip, (b) 110 mm (xvii) W.C. Connector (150 mm long) 125 X 110(W/WC Ring) 75 mm (xxx) Plain Floor Trap with Top tile & Strainer 75 mm | 8.000 | 85.00 | Each | 680.00 |
| 73 | (ii) Plain Tee, (b) 110 mm (iii) Door Tee, (b) 110 mm (ix) Bend 45°, (b) 110 mm (xi) Door Bend (T.S.), (b) 110 mm (xvi) Pipe Clip, (b) 110 mm (xvii) W.C. Connector (150 mm long) 125 X 110(W/WC Ring) 75 mm (xxx) Plain Floor Trap with Top tile & Strainer 75 mm | 12.000 | 85.00 | Each | 1020.00 |
| 74 | (iii) Door Tee, (b) 110 mm (ix) Bend 45°, (b) 110 mm (xi) Door Bend (T.S.), (b) 110 mm (xvi) Pipe Clip, (b) 110 mm (xvii) W.C. Connector (150 mm long) 125 X 110(W/WC Ring) 75 mm (xxx) Plain Floor Trap with Top tile & Strainer 75 mm | 10.000 | 195.00 | Each | 1950.00 |
| 75 | (ix) Bend 45°, (b) 110 mm (xi) Door Bend (T.S.), (b) 110 mm (xvi) Pipe Clip, (b) 110 mm (xvii) W.C. Connector (150 mm long) 125 X 110(W/WC Ring) 75 mm (xxx) Plain Floor Trap with Top tile & Strainer 75 mm | 10.000 | 89.00 | Each | 890.00 |
| 76 | (xi) Door Bend (T.S.), (b) 110 mm (xvi) Pipe Clip, (b) 110 mm (xvii) W.C. Connector (150 mm long) 125 X 110(W/WC Ring) 75 mm (xxx) Plain Floor Trap with Top tile & Strainer 75 mm | 10.000 | 147.00 | Each | 1029.00 |
| 77 | (xvi) Pipe Clip, (b) 110 mm (xvii) W.C. Connector (150 mm long) 125 X 110(W/WC Ring) 75 mm (xxx) Plain Floor Trap with Top tile & Strainer 75 mm | 7.000 | 21.00 | Each | 630.00 |
| 78 | (xvii) W.C. Connector (150 mm long) 125 X 110(W/WC Ring) 75 mm (xxx) Plain Floor Trap with Top tile & Strainer 75 mm | 30.000 | 142.00 | Each | 568.00 |
| 79 | (xxx) Plain Floor Trap with Top tile & Strainer 75 mm | 4.000 | 144.00 | Each | 1008.00 |
| 80 | L) Rubber Ring, (b) 110 mm | 7.000 | 17.00 | Each | 255.00 |
| 81 | (C) Rubber Lubricant 500 ML | 15.000 | 187.00 | Each | 187.00 |
| 82 | D) Solvent Cement 250 ML | 1.000 | 103.00 | 250 ML | 103.00 |
| 83 | Supplying, fitting & fixing UPVC pipes A-Type and fittings conforming to IS:13592-1992 with all necessary clamps nails, including making holes in walls, floor etc. cutting trenches in any soil through masonry concrete structures etc if necessary and mending good damages including joining with jointing materials (Spun Yarn, Valamoid/Bitumen/M-Seal etc) complete. A) UPVC Pipes: (i) 75 mm. Dia. (P. - 212, Item. No. - 21 (A)(i) , (B),(C),(i) & (B), (d),(i), Pwd volume- i, 2017) | 20.000 | 84.00 | Mtr | 1680.00 |
| 84 | Supplying, fitting & fixing UPVC pipes A-Type and fittings conforming to IS:13592-1992 with all necessary clamps nails, including making holes in walls, floor etc. cutting trenches in any soil through masonry concrete structures etc if necessary and mending good damages including joining with jointing materials (Spun Yarn, Valamoid/Bitumen/M-Seal etc) complete. A) UPVC Pipes: (i) 75 mm. Dia. (P. - 212, Item. No. - 21 (A)(i) , (B),(C),(i) & (B), (d),(i), Pwd volume- i, 2017) | 20.000 | 188.00 | Mtr | 3760.00 |
| 85 | B) UPVC Fittings: c) Bend 87.5 degree (i) 75 mm. Dia. | 6.000 | 84.00 | Mtr | 504.00 |

| | | | | | |
|----|---|-------|----------|------|----------|
| 92 | Sanitary and plumbing work schedule P-82, It-18(B) | 2.000 | 58.00 | Each | 116.00 |
| 91 | Supplying, fitting and fixing soap holder. P.W.D S&P Schedule, P-81, It-15(ii) | 2.000 | 484.00 | Each | 968.00 |
| 90 | Supplying, fitting and fixing bevelled mirror 5.5 mm thick silver red as per I.S. 3438 / 1965 together with brass C.P. hinges. (ii) 600 mm X 450 mm Schedule, p No 82 I No- 22 (a)(iii) P.W.D S&P | 2.000 | 430.00 | Each | 860.00 |
| 89 | Supplying, fitting and fixing towel rail with two brackets. S.P.89, Item No-4 7th Corrigena Volume II (Other than SAIL/TATA/RINL) inside dia. thick dry brick work and 250 mm thick cement brick work (1:6) and 1.00m complete in all respect with all costs of labour and materials. With 250 mm dewatering and removing the excess earth from the premises as per direction arrangements for pipe connections, excavation of well including shoring, fixed in the cover slab with necessary fittings, making necessary with necessary reinforcement and shuttering including one 560 mm dia. R.C.C. manhole cover (heavy type) of approved make supplied, fitted and R.C.C. cover slab of 100 mm thick with cement conc (1:1.5:3) with stone chips metre of inside of the well with brick metal (50 mm to 63 mm size) including plaster (1:4) on top of the R.C.C. cover slab including filling bottom 1.00 (1:4) on outer face from top of the well upto G.L. and 6 mm thick cement inside face upto the depth of cement brick work, 15mm thick cement plaster (1:4) upto 0.90 metre from top with 20mm thick cement plastering (1:4) to intermediate cement brick work (1:4) band all round and cement brick work with dry brick work upto 1.6 metre from the bottom having 150 mm Construction of circular soak well 2.5 metre deep in all types of sandy soils | 1.000 | 13899.00 | Each | 13899.00 |
| 88 | P.W.D S&P Schedule, S.P.88, Item No-3(ii)(A) 7th Corrigena Volume II A) With Pakur variety. (SW/SPL/SHYAM/SRMB/ELECTROSTEEL/SSL) (ii) For 20 users weight of cement with all costs of labour and materials. stone flooring is to be done with admixture of water proofing compound @ 0.5% by and connecting all necessary pipes, joints etc. with internal plaster work and artificial chamber and including constructing attached inspection pit as per approved drawing spoils, filling up the chamber with clear water, removing foreign materials from the ramming, dressing the bed and filling the sides of the tanks with earth, removing earth in all sorts of soil, shoring, bailing out and pumping out water as necessary. fixing all necessary specials, fittings, S.W. tees, C.I. foot rest etc. including excavation stone over 100 mm thick R.C.C. (1:1.5:3) bottom slab including supplying, fitting and R.C.C. (1:1.5:3) top slab with necessary fittings, 20mm thick cement plaster (4:1) to near cement finish to the internal surfaces and 15 mm thick cement plaster (4:1) to outside wall upto 200 mm below G.L floor finished with 25 mm thick grey artificial class brick work in cement mortar (1:4) including two 560 mm dia. R.C.C. manhole cover (heavy type) of approved make supplied, fitted and fixed in the 100mm thick R.C.C. (1:1.5:3) top slab with necessary fittings, 20mm thick cement plaster (4:1) with Construction of septic tank of different capacities as per approved drawing with 1st | 1.000 | 42400.00 | Each | 42400.00 |
| 87 | Constructing inspection pit of inside measurement 600mm X 600mm X upto 600mm (depth) with 250 mm thick 1st class brick work in cement mortar (1:4) on all sides, bottom of the pit consisting of 100 mm thick cement concrete (1:3:6) with stone chips and out-side walls upto G.L. and 20 mm thick (1:4) plaster to bottom of the pit. providing necessary invert with cement concrete (1:3:6) with stone chips as per direction, neat cement finishing to entire internal surfaces, top of the pit covered with 100 mm thick R.C.C. slab (1:1.5:3) with stone chips and necessary reinforcements upto 1% and shuttering including 6 mm thick cement plaster (1:4) in all external surfaces of the slab and one 560 mm dia. R.C.C. manhole cover of approved make supplied, fitted and fixed in the slab with necessary fittings, necessary earthwork in excavation in all sorts of soil, filling sides of the pit with earth and removing spoils after work complete in all respect with all costs of labour and materials. P.W.D S&P Schedule, S.P.87, Item No-1/(i), 7th Corrigena Volume II (i) With Pakur variety (Other than SAIL/TATA/RINL). | 2.000 | 6153.00 | Each | 12306.00 |
| | Constructing inspection pit of inside measurement 600mm X 600mm X upto 600mm (depth) with 250 mm thick 1st class brick work in cement mortar (1:4) on all sides, bottom of the pit consisting of 100 mm thick cement concrete (1:3:6) with stone chips and out-side walls upto G.L. and 20 mm thick (1:4) plaster to bottom of the pit. providing necessary invert with cement concrete (1:3:6) with stone chips as per direction, neat cement finishing to entire internal surfaces, top of the pit covered with 100 mm thick R.C.C. slab (1:1.5:3) with stone chips and necessary reinforcements upto 1% and shuttering including 6 mm thick cement plaster (1:4) in all external surfaces of the slab and one 560 mm dia. R.C.C. manhole cover of approved make supplied, fitted and fixed in the slab with necessary fittings, necessary earthwork in excavation in all sorts of soil, filling sides of the pit with earth and removing spoils after work complete in all respect with all costs of labour and materials. P.W.D S&P Schedule, S.P.87, Item No-1/(i), 7th Corrigena Volume II (i) With Pakur variety (Other than SAIL/TATA/RINL). | 2.000 | 78.00 | Mtr | 156.00 |

100
B) UPVC fittings: d) Shoe (i) 75 mm. Dia.

| | | | | | |
|----|---|-------|--------|------|-----------|
| 93 | supplying, fitting and fixing glass shelf with aluminium guard rails. (a) Ordinary type with 5.5 mm sheet glass (i) 450 mm X 125 mm | 2.000 | 341.00 | Each | 682.00 |
| | Sanitary and plumbing work schedule P-81, It-16(a)(i) | | | | |
| | Add S.G.S.T. @ | | | | 548371.04 |
| | Add C.G.S.T. @ | 9% | 18% | | 49353.39 |
| | Cost Of Civil Work | 9% | | | 49353.39 |
| | Add Labour.Welfare.Cess. @ | | | | 647077.83 |
| | Total Amount Including Labour.Welfare.Cess. @ 1% | 1% | | | 647077.83 |
| | Total Amount Including Labour.Welfare.Cess. | | | | 645454.14 |
| | Add Contingency @3% | | | | 647077.83 |
| | Total Amount Including Labour.Welfare.essc. and contingency | | | | 19363.62 |
| | Say Rs. | | | | 671272.06 |
| | | | | | 673153.00 |

Rupees Six Lakh Seventy Three Thousand One Hundred Fifty Three Only

Seventy Two

Two

Only

Jr. Engineer
Birbhum Division
M.E. Directorate
Govt. of West Bengal
25.06.23
Sanyal

Prepared by
Sub-Assistant Engineer
SAINTHIA MUNICIPALITY
Sainthia, Birbhum

20/06/2025

Approved by
Chairman
SAINTHIA MUNICIPALITY
Sainthia, Birbhum

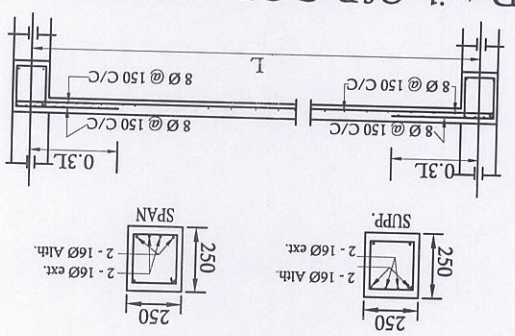
May be Vetted
Assistant Engineer
Birbhum Division
Municipal Engineering Directorate
Govt. of West Bengal

Executive Engineer
Birbhum Division
M.E. Dte.
Govt. of W.B.

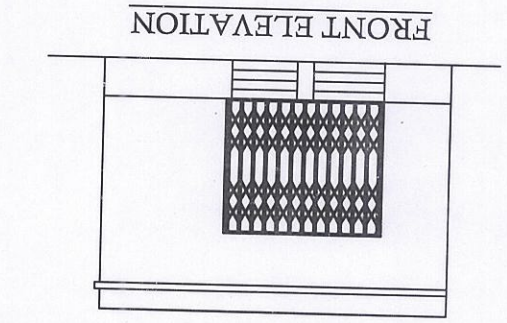
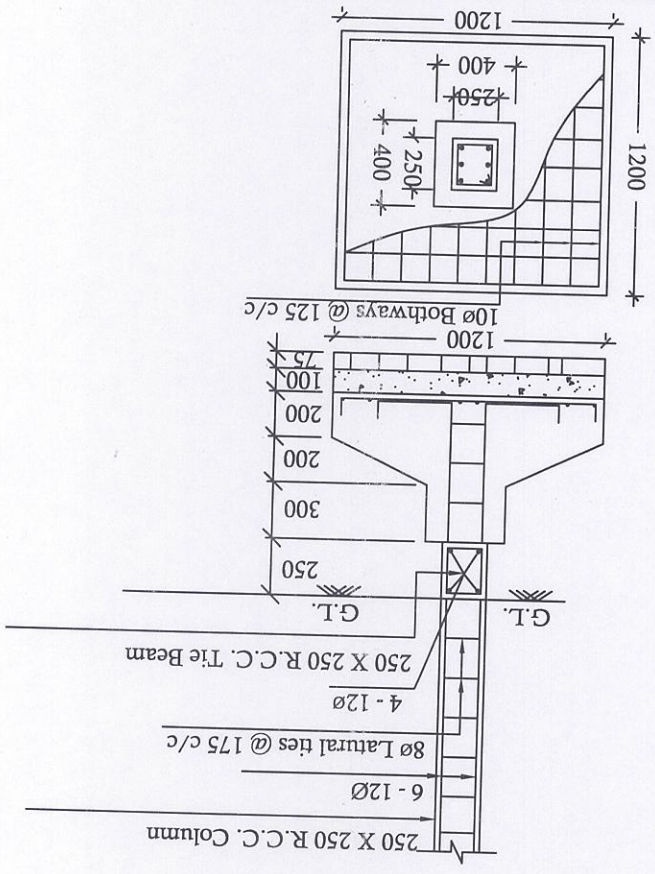
Executive Engineer
Birbhum Division
M.E. Dte.
Govt. of W.B.

MODEL DRAWING FOR CONSTRUCTION OF C. T./P.T. TOILET SEATS 2 NOS URINAL 3 NOS
 MODEL NO.- F

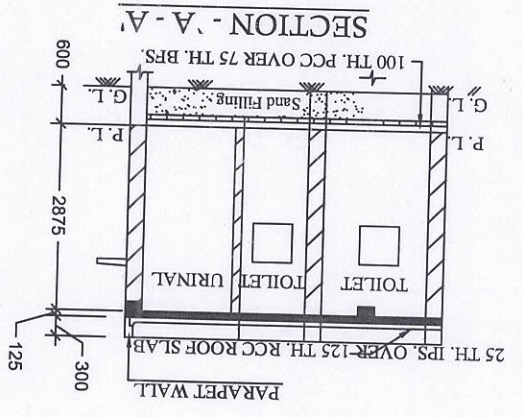
Details of R.C.C Roof Slab & Beam (SCALE - 1 : 25)



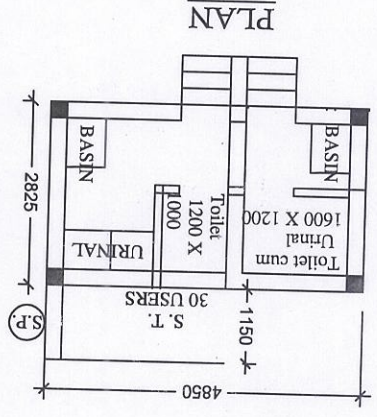
DETAILS OF R. C. C COLUMN (SCALE - 1 : 25)



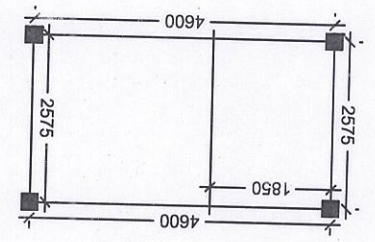
FRONT ELEVATION



SECTION - A - A



PLAN



LAYOUT PLAN

Approved by
 Chairman
 SAINTHIA MUNICIPALITY
 Sainthia, Birbhum

Prepared by
 Sub-Assistant Engineer
 SAINTHIA MUNICIPALITY
 Sainthia, Birbhum
 3/16/2015