

Estimate of civil works for construction of toilet block Near Andolan Setu Market in ward no 12 under Balurghat Municipality

[Rates taken from PWD Building & Sanitary plumbing Schedule] [Effect from 30th August 2018]

Sl. No.	Page No.	Item of work	No.	L (M)	B (M)	H (M)	Quantity	Total Quantity	Unit	Rate (Rs.)	Amount (Rs.)
1	1/2.a	Earth work in excavation of foundation trenches or drains, in all sorts of soil (including mixed soil but excluding laterite or sandstone) including remixing, spreading or stacking the spoils within a lead of 75 m. as directed. The item includes necessary									
		Foundation Footing	4	1.35	1.35	1.20	8.75				
		Foundation Tie beam	2	5.225	0.40	0.325	1.36				
		Do	3	2.075	0.40	0.325	0.81	10.92	M ³	119.27	1302.43
2	1/3.a	Earth work in filling in foundation trenches or plinth with good earth, in layers not exceeding 150 mm. including watering and ramming etc. layer by layer complete.(a) With earth obtained from excavation of foundation.									
		a) For foundation 1/5th of excation	0.20	10.920			2.18	2.18	M ³	77.54	169.04
3	P- 2, It no - 4 (A)	Filling in foundation or plinth by silver sand in layers not exceeding 150 mm as directed and consolidating the same by thorough saturation with water, ramming complete including the cost of supply of sand.(payment to be made on measurement of									
		Foundation Footing	4	1.35	1.35	0.075	0.55				
		Floor	1	4.35	2.33	0.425	4.30	4.85	M ³	487.41	2363.94
4	Page - 14, item no. 1.	Single Brick Flat Soling of picked jhama bricks including ramming and dressing bed to proper level and filling joints with									
		Foundation Footing	4	1.20	1.20		5.76				
		Foundation Tie beam	2	4.35	0.25		2.18				
			3	2.325	0.25		1.74				
		Floor	1	1.60	2.325		3.72				
1	2.50		2.325		5.81	19.21	M ³	324.00	6224.04		
5	P - 47, It no - 3	Supplying and laying Polythene Sheet (150gm / sq.m.) over damp proof course or below flooring or roof terracing or in foundation or in foundation trenches.									
		Step	1	1.75	0.75		1.31				
			1	3.10	0.75		2.33	3.64	M ²	24.00	87.36
6	P-24, item no 4.a	Ordinary Cement concrete (mix 1:2:4) with graded stone chips (20 mm nominal size) excluding shuttering and reinforcement, if any, in ground floor as per relevant IS codes.a) Pakur Variety.									
		Footing	4	1.200	1.200	0.100	0.58				
		Main floor	1	4.35	2.325	0.100	1.01				
		Step 1	1	1.75	0.750	0.150	0.20				
		Step 2	1	1.75	0.500	0.150	0.13				
		Step 3	1	1.75	0.250	0.150	0.07				
		Front	1	3.10	0.750	0.075	0.17	2.16	M ³	5601.69	12099.65
7	P- 15/8.a	Brick work with 1st class bricks in cement mortar (1:4).i) In Foundation & plinth a) 250 wall									
		Plinth wall	2	4.350	0.250	0.600	1.31				
		Do	3	2.325	0.250	0.600	1.05	2.36	M ³	5172.40	12206.86
8	Page - 47, Item -1	25mm. thick damp proof course with cement concrete with stone chips (1:1.5:3) [with graded stone aggregate 10 mm nominal size] and admixture of water proofing compound as per manufacturer's specification followed by two coat of polymer based paint, (1st coat after 4 to 5 days of concrete laying and 2 nd coat just before brick masonry work) as directed (cost of water proofing compound & polymer based paint to be paid separately).(Chequering not required over concrete or painted surface). [Note:									
		Plinth wall	2	4.350	0.250		2.18				
		Do	3	2.325	0.250		1.74	3.92	M ²	206.00	807.52

Estimate of civil works for construction of toilet block Near Andolan Setu Market in ward no 12 under Balurghat Municipality

[Rates taken from PWD Building & Sanitary plumbing Schedule] [Effect from 30th August 2018]

Sl. No.	Page No.	Item of work	No.	L (M)	B (M)	H (M)	Quantity	Total Quantity	Unit	Rate (Rs.)	Amount (Rs.)	
9	Page - 15, Item- 7.b (Rate Analysis)	Brick work with 1st class bricks in cement mortar (1:4) (b) superstructure ground floor PWD Building Works schedule.										
		Outer wall	2	4.350	0.250	2.725	5.93					
		Do	2	2.325	0.250	2.725	3.17					
		Middle wall	1	2.325	0.250	2.875	1.67					
		Pillar for water tank	4	0.250	0.250	0.300	0.08					
		Deduct for windows	3	0.600	0.250	0.600	-0.27					
		Deduct for Door	2	0.750	0.250	2.075	-0.78	9.80	M ³	5395.40	52874.92	
10	P-16/16	125 mm. thick brick work with 1st class bricks in cement mortar (1:4) in ground floor.										
		Inner partition wall	1	1.325		2.875	3.81					
		Do	1	0.250		2.875	0.72					
		Do	1	0.850		2.875	2.44					
		Parapete wall	2	5.150		0.300	3.09					
		do	2	3.125		0.300	1.88	11.94	M ²	674.33	8051.5	
11	P-26, item no 10.a	Ordinary Cement concrete (mix 1:1.5:3) with graded stone chips (20 mm nominal size) excluding shuttering and reinforcement if any, in ground floor as per relevant IS codes. nominal size) excluding shuttering and reinforcement, if any, in ground floor as per relevant IS codes. a) Pakur Variety. Building										
		Footing	4	1.200	1.200	0.200	1.15					
		Honch	4	0.051			0.20					
		Above Honch	4	0.400	0.400	0.300	0.19					
		Column	4	0.250	0.250	3.325	0.83					
		Tie beam	2	4.850	0.250	0.250	0.61					
		do	3	2.325	0.250	0.250	0.44					
		Tie beam for	1	4.350	0.150	0.150	0.10					
		do	1	1.200	0.150	0.150	0.03					
		Lintel	2	4.850	0.250	0.150	0.36					
		do	3	2.325	0.250	0.150	0.26					
		do	1	1.600	0.125	0.150	0.03					
		do	1	1.200	0.125	0.150	0.02					
		do	1	1.125	0.125	0.150	0.02					
		Roof Beam	2	4.850	0.250	0.150	0.36					
		do	2	2.325	0.250	0.150	0.17					
		Slab	1	5.150	3.125	0.100	1.61					
		Chajja collapsable	1	2.150	0.450	0.075	0.07					
		Water Tank Slab	1	1.500	1.500	0.100	0.23	6.68	M ³	6107.32	40796.9	
		12	P-44/40.a j.II	Reinforcement for reinforced concrete work in all sorts of structures including distribution bars, stirrups, binders etc. including supply of rods, initial straightening and removal of loose rust (if necessary), cutting to requisite length, hooking and bending with 16 gauge black annealed wire at every intersection, complete as per drawing and direction. For works in foundation, basement and upto roof of ground floor/upto 4m (JSW/JSPL/SHYAM/SRMB/BMASL/ELECTROSTEEL/SSL)								
	1.25%						655.48	0.65548	MT	58250.50	38182.04	
13	42/36.f	Hire and labour charges for shuttering with centering and necessary staging upto 4 m. using approved stout props and thick hard wood planks of approved thickness with required bracing for concrete slabs, beams, column, lintels curved or straight including i) 25 mm. to 30 mm. thick wooden shuttering										
		Column Foundation	4	4.800		0.300	5.76					
		Column above honch	4	1.600		0.300	1.92					
		Tie beam	4	4.850		0.250	4.85					

Estimate of civil works for construction of toilet block Near Andolan Setu Market in ward no 12 under Balurghat Municipality

[Rates taken from PWD Building & Sanitary plumbing Schedule] [Effect from 30th August 2018]

Sl. No.	Page No.	Item of work	No.	L (M)	B (M)	H (M)	Quantity	Total Quantity	Unit	Rate (Rs.)	Amount (Rs.)
		do	6	2.325		0.250	3.49				
		Pertition wall tie beam	2	1.600		0.150	0.48				
		do	2	1.200		0.150	0.36				
		do	2	1.125		0.150	0.34				
		Water Tank Slab	4	1.500		0.100	0.60	17.80	M ²	205.00	3649.00
14	42/36.a	Hire and labour charges for shuttering with centering and necessary staging upto 4 m. using approved stout props and thick hard wood planks of approved thickness with required bracing for concrete slabs, beams, column, lintels curved or straight including ii) 25 mm. to 30 mm. thick wooden shuttering									
		Column	4	1.000		2.725	10.90				
		Lintel	4	4.850		0.150	2.91				
		Do	6	2.325		0.150	2.09				
		Pertition wall lintel be	2	1.600		0.150	0.48				
		do	2	1.200		0.150	0.36				
		do	2	1.125		0.150	0.34				
		chajja above	1	2.150		0.450	0.97				
		side	1	3.050		0.075	0.23				
		Roof Beam	4	4.850		0.150	2.91				
		do	4	2.325		0.150	1.40				
		Slab bott	1	4.350		2.325	10.11				
		Slab curnish bott	2	5.150		0.150	1.55				
		Slab bott	2	2.825		0.150	0.85				
		Slab side	2	5.150		0.100	1.03				
Do	2	3.125		0.100	0.63	36.76	M ²	328.00	12057.28		
15	189/1.ii.c	Plaster (to wall, floor, ceiling etc. with sand and cement mortar including rounding off or chamfering corners as directed and raking out joints or roughening of concrete surface, including throating, nosing and drip course where necessary (ground									
		i)10 mm. thick plaster.(1:4) Ceiling									
		Celling	1	4.350		2.325	10.11				
		Roof curnish	2	5.150		0.150	1.55				
		do	2	2.825		0.150	0.85				
		Roof side	2	5.150		0.400	4.12				
		do	2	3.125		0.400	2.50				
		Chajja top & bott	2	2.150		0.450	1.94				
		Do side	1	3.050		0.075	0.23				
Col for water tank slab	4	1.000		0.300	1.20	22.50	M ²	126.48	2845.80		
16	189/1.i.b	Plaster (to wall, floor, ceiling etc. with sand and cement mortar including rounding off or chamfering corners as directed and raking out joints or roughening of concrete surface, including throating, nosing and drip course where necessary (ground									
		Inner wall	3	2.325		2.875	20.05				
		do	3	1.600		2.875	13.80				
		do	1	1.200		2.875	3.45				
		do	1	1.000		2.875	2.88				
		Deduction Door D	4	0.750		2.075	-6.23				
		Window	3	0.600		0.600	-1.08				
		Outer wall	2	4.850		3.475	33.71				
			2	2.825		3.475	19.63				
			1	2.325		2.875	6.68				
			1	1.600		2.875	4.60				
			1	1.325		2.875	3.81				
	1	1.125		2.875	3.23						
						104.53	M ²	141.48	14788.90		

Estimate of civil works for construction of toilet block Near Andolan Setu Market in ward no 12 under Balurghat Municipality

[Rates taken from PWD Building & Sanitary plumbing Schedule] [Effect from 30th August 2018]

SL No.	Page No.	Item of work	No.	L (M)	B (M)	H (M)	Quantity	Total Quantity	Unit	Rate (Rs.)	Amount (Rs.)
		(ii) 40mm thick shutters with 19mm thick panel of size 30 to 45 cm for Door "D"	2	0.750		2.075	3.11	3.11	M ²	2968.00	9230.48
27	Pg-114 of 315, It-1	Wood work in door and window frame fitted and fixed in position complet including a protective coat of painting at the contact surface of the frame exluding cost of concrete, Iron Butt Hinges and M.S clamps. (The quantum should be correted upto three decimals).Note: Extra for Lifting Charges for each additional floor, i) Rs. 200/- per Cu.m (upto 4th floor) (d) Sal:									
		D	2	4.900	0.100	0.075	0.070	0.070	M ³	71907.00	5033.49
28	Pg-140 of 315, It-4C	Supplying, fitting and fixing M.S. clamps for door and window frame made of flat bent bar, end bifurcated with necessary screws etc. by cement concrete(1:2:4) as per direction. (Cost of concrete will be paid separately)- (c) 40mm X 6mm, 125mm	2	6.000			12.00	12.00	Each	20.00	240.00
29	Page - 74 , Item no 46(i)	Supplying and laying chequered tiles of any shede and of approved quality with (1:1.5:3) cement concrete laied in pannels or patterns as directed in pavement ,footpath etc including necessary underlay 25 mm thick (avg)cement mortar (1:3) complete in all respect with all labour and materials. (Using cement slurry @4.4kg/sq.m at back side and @2.4 kg/sq.m for joint filling).									
		Front	1	2.000		0.750	1.50				
		do	1	1.100		0.750	0.83	2.33	M ²	473.00	1102.09
30	PWD, P- 198, 1 - 5	Rendering the SURFACE of walls and ceiling with White Cement base WATER PROOF wall putty of approved make & brand.(1.5 mm thick) In Ground Floor, PWD Building Works schedule,									
		Celling	1	1.600		2.325	3.72				
		do	1	2.500		2.325	5.81				
		Inner wall	4	2.325		0.775	7.21				
		do	2	1.600		0.775	2.48				
		do	2	2.500		0.775	3.88				
		Pertition	2	1.600		0.775	2.48				
		do	1	1.325		0.775	1.03				
		do	1	1.000		0.775	0.78				
		do	1	1.125		0.775	0.87				
		do	1	1.200		0.775	0.93				
		Outer wall front	1	4.850		4.050	19.64	48.83	M ²	122.00	5957.26
31	Page - 74 , Item no 46(i).	Applying interior grade Acrylic Primer of approved quality and brand on plastered and concrete surface old or new surface to receive Distemper Acrylic emulsion paint including scrapping and preparing the surface thoroughly , complete as per manufacturer's cation and as per direction of the E-I-C (Ground Floor) (b) Two Coats PWD Building Works schedule,									
		Celling	1	1.600		2.325	3.72				
		do	1	2.500		2.325	5.81				
		Inner wall	4	2.325		0.775	7.21				
		do	2	1.600		0.775	2.48				
		do	2	2.500		0.775	3.88				
		Pertition	2	1.600		0.775	2.48				

Estimate of civil works for construction of toilet block Near Andolan Setu Market in ward no 12 under Balurghat Municipality

[Rates taken from PWD Building & Sanitary plumbing Schedule] [Effect from 30th August 2018]

SL No.	Page No.	Item of work	No.	L (M)	B (M)	H (M)	Quantity	Total Quantity	Unit	Rate (Rs.)	Amount (Rs.)
		do	1	1.325		0.775	1.03				
		do	1	1.000		0.775	0.78				
		do	1	1.125		0.775	0.87				
		do	1	1.200		0.775	0.93	29.19	M ²	44.20	1290.2
32	Page - 196 , Item no 9(b) .	Dry Destempering interial walls or ceiling including cleaning, washing, smoothening surface (b) two coats PWD Building Works schedule, i) water base									
		Ceiling	1	1.600		2.325	3.72				
		do	1	2.500		2.325	5.81				
		Inner wall	4	2.325		0.775	7.21				
		do	2	1.600		0.775	2.48				
		do	2	2.500		0.775	3.88				
		Pertition	2	1.600		0.775	2.48				
		do	1	1.325		0.775	1.03				
		do	1	1.000		0.775	0.78				
		do	1	1.125		0.775	0.87				
		do	1	1.200		0.775	0.93	29.19	M ²	49.00	1430.31
33	Page - 196 , Item no 8(b)	Applying exterior grade Acrylic Primer of approved quality and brand on plastered or concrete surface old or new surface to receive Decorative Textured (Martt Finish) or Smooth Finish Acrylic exterior emulsion paint including scraping and preparing the surface thoroughly , complete as per manufacturer's specification and as per direction of the EIC in Ground Floor (b) two coats. PWD Building Works schedule,									
		Back & front wall	2	4.850		4.050	39.29				
		Side wall	2	2.825		4.050	22.88	62.17	M ²	45.10	2803.87
34	Page - 197 , Item no 17(a)	Protective and Decorative Acrylic Exterior emulsion paint of approved quality, as per manufacturer's specification and as per direction of EIC to be applied overf Acrylic primer as required. The rate includes cost of materials, labour, scaffolding and all incedental charges but excluding the cost of primer in ground floor (two coats)(a) normal acrylic emulsion. PWD Building Works schedule,									
		Back & front wall	2	4.850		4.050	39.29				
		Side wall	2	2.825		4.050	22.88	62.17	M ²	67.00	4165.39
35	Page - 200 . Item no 1 (b)	(b) Priming one coat on timber or plastered surface with synthetic oil bound primer of approved quality including smoothening surfaces by sand papering etc. PWD Building Works schedule,									
		Frame D	2	4.900		0.350	3.43				
		Shutter D	4	0.750		2.075	6.23	9.66	M ²	38.00	367.08
36	Page - 200 . Item no 1 (b) 2(A)(a) (iv)	(A) Painting with best quality synthetic enamel paint of approved make and brand including smoothening surface by sand papering etc. including using of approved putty etc. on the surface, if necessary : (a) On timber or plastered surface : With super gloss (hi-gloss) - (iv). Two coats (with any shade except white)									
		Frame D	2	4.900		0.350	3.43				
		Shutter D	4	0.750		2.075	6.23	9.66	M ²	81.00	782.46

Estimate of civil works for construction of toilet block Near Andolan Setu Market in ward no 12 under Balurghat Municipality

[Rates taken from PWD Building & Sanitary plumbing Schedule] | Effect from 30th August 2018 |

Sl. No.	Page No.	Item of work	No.	L (M)	B (M)	H (M)	Quantity	Total Quantity	Unit	Rate (Rs.)	Amount (Rs.)	
37	P-104 Item-13 A (i) (3rd Corrige ndam Page No 91)	a) M.S. or W.I Ornamental grill of approved designe joints continuously welded with M.S. W.I. Flats and bars of windows,railing etc. fitted and fixed with necessary screws and lugs in ground floor (Add extra @ 1% for each addi floor upto 4 th floor and @ 1.25% for each addi floor above 4th floor) (i) Grill weighing above 10 Kg/sqm and upto 16 Kg/sqm.										
		Window	3	0.600		0.600	1.08					
		16 Kg/sqm					1.08	17.28	Kg	100.21	1731.63	
38	P/200 Item- 1(a)	a) Priming one coat on steel or other metal surface with synthetic oil bound primer of approved quality including smoothening surfaces by sand papering etc. PWD Building Works schedule,										
		Window	3	0.600		0.600	1.08					
		Collapsible gate	1	2.150		2.150	4.62	5.70	M ²	29.00	165.30	
39	P-200 Item- 2(b)(iv)	(A) Painting with best quality synthetic enamel paint of approved make and brand including smoothening surface by sand papering etc. including using of approved putty etc. on the surface, if necessary : (b) On steel or other metal surface : (iv) Two coats (with any shade except white)										
		Window	3	0.600		0.600	1.08					
		Collapsible gate	1	2.150		2.150	4.62	5.70	M ²	79.00	450.3	
40	Page- 66 Item-36 (A) 3rd Corri.	Supplying and laying true to line and level vitrified tiles of approved brand (size not less than 600 mm X 600 mm X 10 mm thick) in floor, skirting etc. set in 20 mm sand cement mortar (1:4) and 2 mm thick cement slurry back side of tiles using cement @ 2.91Kg./sqM or using polymerised adhesive (6 mm thick layer applied directly over finished artificial stone floor/Mosaic etc without any backing course) laid after a....labour and all other incidental charges complete true to the manufacturer's specification and direction of Engineer-in-Charge. (White cement, synthetic adhesive and grout material to be supplied by the contrre I (I) With application slurry @1.75 kg/ Sq.m, 20 mm sand cement mortar (1:4) & 2 mm thick cement slurry at back side of tiles, 0.2 kg/ Sq.m white cement for joint filling with pigment. (A) Deep Colour & White PWD Building Works schedule,										
		Main floor	1	1.600		2.325	3.72					
		do	1	2.500		2.325	5.81					
		Door bott	2	0.750		0.250	0.38					
		Step trade	3	1.750		0.250	1.31					
		Riser	3	1.750		0.150	0.79					
		Side	2	0.750		0.150	0.23					
			2	0.500		0.150	0.15					
			2	0.250		0.150	0.08		12.47	M ²	1695.00	21136.65

Estimate of civil works for construction of toilet block Near Andolan Setu Market in ward no 12 under Balurghat Municipality

[Rates taken from PWD Building & Sanitary plumbing Schedule] [Effect from 30th August 2018]

Sl. No.	Page No.	Item of work	No.	L (M)	B (M)	H (M)	Quantity	Total Quantity	Unit	Rate (Rs.)	Amount (Rs.)
41	page-64, Item:35 (B) (b),(ii) (3rd Corrigendum, Page 36)	Supplying, fitting & fixing 1st quality Ceramic tiles in walls and floors to match with the existing work & 4 nos. of key stones (10mm) fixed with araldite at the back of each tile & finishing the joints with white cement mixed with colouring oxide if required to match the colour of tiles including roughening of concrete surface, if necessary or by synthetic adhesive & grout materials etc. B) Wall Area of each tile above 0.09 Sq.m. ii) Other than Coloured decorative including white PWD Building									
		Wall	4	2.325		2.100	19.53				
			1	1.600		2.100	3.36				
			1	2.500		2.100	5.25				
			1	1.100		2.100	2.31				
			1	2.000		2.100	4.20				
			2	0.850		2.100	3.57				
			1	1.200		2.100	2.52				
			1	1.325		2.100	2.78				
			1	0.375		2.100	0.79				
			1	0.250		2.100	0.53				
	2	0.125		2.100	0.53	45.37	M ²	1041.00	47230.17		
42	Page-63 Item-33 (a)	Supplying, fitting & fixing granite slabs 15mm to 18 mm. thick with uniform texture & without decorative veins in columns, wall, fascia, rise etc. with 15 mm thick [avg] cement mortar (1:2) including making suitable arrangements to hold the stones properly by brass / copper hooks including pointing in cement mortar (1:2) (1 white cement : 2 marble dust) with admixture of pigment matching the stone shades all complete as per direction of the Engineer-in-charge including cost of all materials, labours, scaffolding, staging, curing and roughening of concrete surface complete. [Using cement slurry at back side of granite @ 4.4 kg/sq.m & white cement slurry for joint filling @ 1.8 kg/sq.m] In ground floor. (a) Area of each Granite slab 0.6 to 1.0 Square meter.									
		Urinal Partition	1	0.900		1.000	0.90	0.90	M ²	3570.00	3213.00
43	PWD, P-233, I-1(h) i	Supplying profiles of required section made of Aluminium Alloy Extrusions conforming to IS: 732-1983 and IS: 1285-1975; Anodized (with required film thickness and specified colour / natural) matt finished conforming to IS: 1868-1983 for fabrication of composite door, sliding & casement windows, partitions, formed of basic sections of any ISI embossed / certified make and brand as per direction of Engineer - In-Charge. (Payment will be made on finished length of the work).(A) In 10-12 Micron thickness Anodizing film I) Natural white h) Louvered window. i) Top, bottom and side member.PWD Building Works schedule,									
			3	2.400			7.20	7.20	M	183.00	1317.6
44		ii) Louvered Section.									
			1	7.200			7.20	7.20	M	658.00	4737.6
45		iii) Cleat angle (Non-anodized).									
			1	6.480			6.48	6.48	M	263.00	1704.24

Estimate of civil works for construction of toilet block Near Andolan Setu Market in ward no 12 under Balurghat Municipality

[Rates taken from PWD Building & Sanitary plumbing Schedule] [Effect from 30th August 2018]

Sl. No.	Page No.	Item of work	No.	L (M)	B (M)	H (M)	Quantity	Total Quantity	Unit	Rate (Rs.)	Amount (Rs.)
46	P-243, 1-9	Supplying bubble free float glass of approved make and brand conforming to IS: 2835-1987.									
		iv) 5mm thick coloured / tinted / smoke glass. PWD Building Works schedule.	3	0.600		0.600	1.08	1.08	M ²	585.00	631.80
47	P-268, It-17(e)	Painting block letters or digits in Black Japan or any approved paint as per direction.									
		e) Size above 7.5 cm. and upto 10 cm. PWD Building Works schedule.	1			450.00	450.00	450.00	Nos	12.00	5400.00
48		Supplying and planting of different plants / trees (supplying well grown plants bushy and healthy, minimum height as specified i.e. exposed height including all leads and lifts, carriage, handling, manuring applying pesticide and fertilizer etc.									
		i) Furcaria Veriegated 10 to 12 leaves in height 20-30 cm in	1			10.00	10.00	10.00	Nos	162.00	1620.00
49	Page - 261, It-9 (x)	x) Ficus blakii (F. Vivicon) well branched (Bushy) of height 120cm - 135 cm in earthen pot of size 30cm. PWD Building	1			3.00	3.00	3.00	Nos	187.00	561.00
		xxvi) Areca Palm 4 - 5 suckers of height 90 cm to 105 cm in earthen pots of size 25 cm. PWD Building Works schedule,	1			3.00	3.00	3.00	Nos	127.00	381.00
SANITARY AND PLUMBING WORKS											
51	Page No.79; item no - 3/b	Supplying, fitting and fixing Anglo-Indian W.C. in white glazed vitreous china ware of approved make complete in position with necessary bolts, nuts etc									
		(a) With 'P' trap (with	1			2.00	2.00	2.00	Nos	3104.00	6208.00
52	P - 81, I- 10/ii	Supplying, fitting and fixing Closet seat of approved make with lid and C.P. hinges, rubber buffer and brass screws complete									
		(b) Anglo Indian (i) Plastic (hallow type) White (a) With 'P' trap (with	1			2.000	2.00	2.00	Nos	380.00	760.00
53	page.80 ,item no-6/ii	Supplying, fitting and fixing Flat back urinal (half stall urinal) in white vitreous chinaware of approved make in position with brass screws on 75 mm X 75 mm X 75 mm wooden blocks complete (ii) 470 mm X 280 mm X 340 mm									
		PWD S&P Schedule.)	1			2.000	2.00	2.00	Nos	945.00	1890.00
54		Supplying fitting and fixing squatting plate with integrated flushing in white vitreous set in cement concrete (6:3:1) with jhama chips complete. Payment of concrete will be paid									
			1			1.000	1.00	1.00	Nos	881.00	881.00
55	P- 36, 1-2(2017) P&S	Supplying, fitting and fixing 10 litre P.V.C low down cistern conforming to IS specification with P.V.C fittings complete, C.I brackets including two coats of painting to bracket etc.									
			1			2.00	2.00	2.00	Nos	1015.00	2030.00
56	P-81, 1-11(2017)P&S	Supplying, fitting and fixing 32 mm dia. Flush Pipe of approved make with necessary fixing materials and clamps complete. i)									
		Polythene Flush Pipe.	1			2.000	2.00	2.00	Each	155.00	310.00
57	P- 81, 1-12/a(2017)P&S	Supplying, fitting and fixing urinal flush pipe fitting of approved brand. (a) C.P. urinal flush pipe fittings range of one.									
			1			2	2.00	2.00	Nos	414.00	828.00

Estimate of civil works for construction of toilet block Near Andolan Setu Market in ward no 12 under Balurghat Municipality

[Rates taken from PWD Building & Sanitary plumbing Schedule] [Effect from 30th August 2018]

Sl. No.	Page No.	Item of work	No.	L (M)	B (M)	H (M)	Quantity	Total Quantity	Unit	Rate (Rs.)	Amount (Rs.)
58	P-41, It 2 (ii)	Supplying, fitting and fixing white vitreous china best quality approved make wash basin with C.I. brackets on 75 mm X 75 mm wooden blocks, C.P. waste fittings of 32 mm dia., mending good all damages and painting the brackets with two coats of approved paint. (ii) 550 mm X 400 mm size									
				1			2	2.00	2.00	Nos	2208.00
59	P-41, It 3	Supplying fitting and fixing pedestal of approved make for wash basin (White) PWD S&P Schedule.									
				1			2	2.00	2.00	Nos	1497.00
60	Page No.-43 Item No.-9-	Supplying,fitting and fixing approved brand P.V.C. CONNECTOR white flexible, with both ends coupling with heavy brass C.P. nut, 15 mm dia., (iii) 600 mm long .PWD S&P									
				1			5	5.00	5.00	Nos	107.00
61	Page No.-43 Item No. 10-	Supplying,fitting and fixing approved brand 32 mm dia.P.V.C. waste pipe, with PVC coupling at one end fitted with necessary clamps. (iv) 1050 mm long each. PWD S&P Schedule.									
				1			2	2.00	2.00	Nos	91.00
62	Page No.-3 Item No.-3 f,	(f) Hand Shower(Health Faucet) with 1mtr Flexible Tube with Wall Hook(Equivalent to Code No.573 & Model -ALLIED of Jaquar or similar). PWD S&P Schedule.									
				1			5	2.00	2.00	Nos	1251.00
63	Page No.-6 Item No.-7-a	(a) (i) Chromium plated Bib Cock short body (Equivalent to Code No. 511 & Model - Tropical / Sumthing Special of ESSCO or similar brand). PWD S&P Schedule.									
				1			7	5.00	5.00	Nos	539.00
64	Page No.-6 Item No.-7-b	(b) (i) Chromium plated Stop Cock (Equivalent to Code No. 513(A) & 513(B) & Model - Tropical / Sumthing Special of ESSCO or similar. PWD S&P Schedule.									
				1			5	3.00	3.00	Nos	493.00
65	Page No.-6 Item No.-7-d	Chromium plated angular Stop Cock with wall flange (Equivalent to Code No. 5053 & Model - Florentine of Jaquar or similar brand). PWD S&P Schedule.									
				1			5	3.00	3.00	Nos	815.00
66	(P. No. 45, Item No. - 19(a)i	Supplying, fitting and fixing pillar cock of approved make. a) (i) CP Pillar Cock - 15 mm. (Equivalent to Code No. 507 & Model - Tropical / Sumthing Special of ESSCO or similar brand).									
				1			2	2.00	2.00	Nos	555.00

Estimate of civil works for construction of toilet block Near Andolan Setu Market in ward no 12 under Balurghat Municipality

[Rates taken from PWD Building & Sanitary plumbing Schedule] [Effect from 30th August 2018]

Sl. No.	Page No.	Item of work	No.	L (M)	B (M)	H (M)	Quantity	Total Quantity	Unit	Rate (Rs.)	Amount (Rs.)
81			1			4	4.00	4.00	Nos	142.00	568.00
82		xxxxi) Plain Floor Trap with Top tile & Strainer 75 mm	1			7	7.00	7.00	Nos	144.00	1008.00
83		L) Rubber Ring, (b) 110 mm	1			15	15.00	15.00	Nos	17.00	255.00
84		C)Rubber Lubricant 500 ML	1			1	1.00	1.00	Nos	187.00	187.00
85		D)Solvent Cement 250 ML	1			1	1.00	1.00	Nos	103.00	103.00
86	(P. - 74, Item. No. - 24 (B)	Labour for fitting and fixing U.P.V.C. pipes for above ground work including cost of jointing materials etc. fitting and fixing all necessary specials, cutting pipes, cutting holes in total pipeline including specials. (B)Above ground, (ii) 110 mm dia. PWD S&P Schedule.	1			25	25.00	30.00	Mtr	57.00	1710.00
87	(P. - 212, Item. No. - 21 (A)(i), (B),(c), (i) & (B), (d),(i).	Supplying, fitting & fixing UPVC pipes A- Type and fittings conforming to IS:13592-1992 with all necessary clamps nails, including making holes in walls, floor etc. cutting trenches in any soil through masonry concrete structures etc if necessary and mending good damages including joining with jointing materials (Spun Yarn, Valamoid/Bitumen/M-Seal etc) complete. A) UPVC Pipes: (i) 75 mm. Dia.	1			30	30.00	20.00	Mtr	188.00	3760.00
88		B) UPVC Fittings: c) Bend 87.5 degree (i) 75 mm. Dia.	1			6	6.00	6.00	Each	95.00	570.00
89		B) UPVC Fittings: d) Shoe (i) 75 mm. Dia.	1			2	2.00	2.00	Each	78.00	156.00
90	PWD S&P Schedule, S.P.87, Item No- 1/(i), 7th Corrigenda Volume ii	Constructing Inspection pit of inside measurement 600mm X 600mm X upto 600mm (depth) with 250 mm thick 1st. class brick work in cement mortar (1:4) on all sides, bottom of the pit consisting of 100 mm thick cement concrete (1:3:6) with stone chips over a layer of jhama brick flat soling, 15 mm thick (1:4) cement plaster to inside walls and out-side walls upto G.L. and 20 mm.thick (1:4) plaster to bottom of the pit, providing necessary invert with cement concrete (1:3:6) with stone chips as per direction, neat cement finishing to entire internal surfaces, top of the pit covered with 100 mm thick R.C.C. slab (1:1.5:3) with stone chips and necessary reinforcements upto 1% and shuttering including 6 mm thick cement plaster (1:4) in all external surfaces of the slab and one 560 mm dia. R.C.C. manhole cover of approved make supplied, fitted and fixed in the slab with necessary fittings, necessary earthwork in excavation in all sorts of soil, filling sides of the pit with earth and removing spoils after work complete in all respect with all costs of labour and materials. i) With Pakur variety (Other than SAIL/TATA/RINL).	1			2	2.00	2.00	Each	6627.00	13254.00

Estimate of civil works for construction of toilet block Near Andolan Setu Market in ward no 12 under Balurghat Municipality											
[Rates taken from PWD Building & Sanitary plumbing Schedule] [Effect from 30th August 2018]											
Sl. No.	Page No.	Item of work	No.	L (M)	B (M)	H (M)	Quantity	Total Quantity	Unit	Rate (Rs.)	Amount (Rs.)
96	PWD S&P Schedule, P-81, It-16(a)(i)	Supplying, fitting and fixing glass shelf with aluminium guard rails. (a) Ordinary type with 5.5 mm sheet glass (i) 450 mm X 125 mm	1			2	2.00	2.00	Each	341.00	682.00
TOTAL											515460.58
ADD 18% GST											92782.9
TOTAL											608243.48
ADD LABOUR CESS 1%											6082.43
TOTAL											614325.91
ADD 3% CONTINGENCY											18247.3
GRAND TOTAL Rs.											632573.21
Say Rs.										632573.00	

S.A.E.
22/12/25
S.A.E.
Bahurghat Municipality

[Signature]
Assistant Engineer
Bahurghat Municipality

[Signature]
Executive Officer
Bahurghat Municipality

[Signature]
Chairman
Bahurghat Municipality

[Signature]
20.01.26.
Junior Engineer
Bahurghat Sub-Division
Under Malda Division
Municipal Engineering Directorate
Deptt. of UD & MA
Govt. of West Bengal

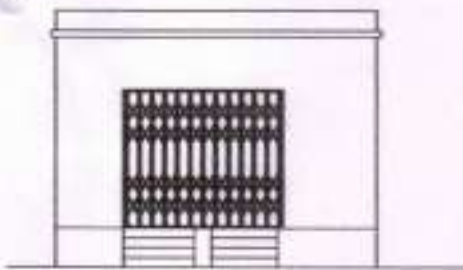
May be Vetted

[Signature]
20/01/26
Assistant Engineer
Bahurghat Sub-Division
Under Malda Division
Municipal Engineering Directorate
Deptt. of UD & MA
Govt. of West Bengal

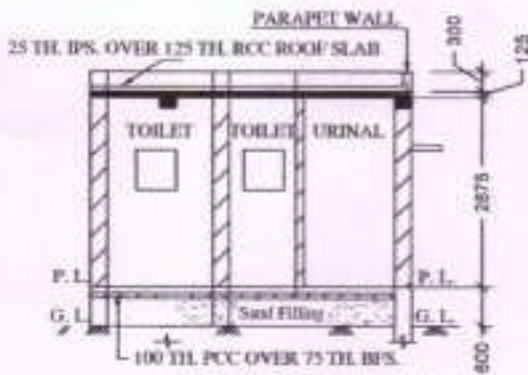
Vetted

[Signature]
29/1/26
Executive Engineer
MALDA DIVISION
Municipal Engineering Directorate
Deptt. of UD & MA
Govt. of West Bengal

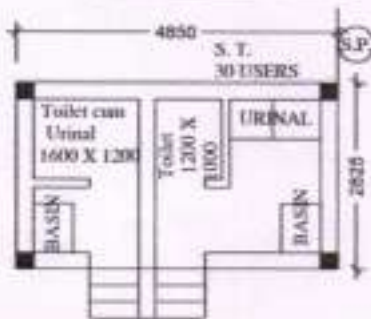
construction of toilet block Near Andolan Setu Market
in ward no 12 under Balurghat Municipality



FRONT ELEVATION



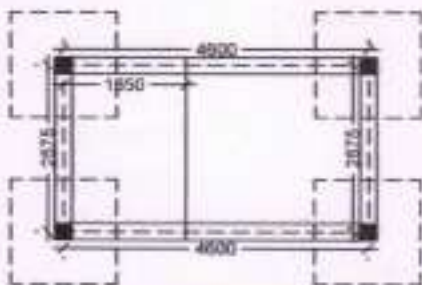
SECTION - 'A - A'



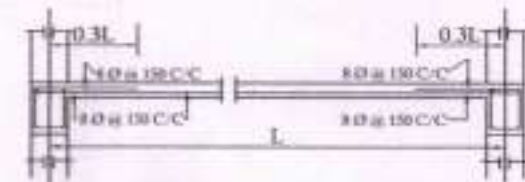
PLAN



BEAM LAYOUT PLAN

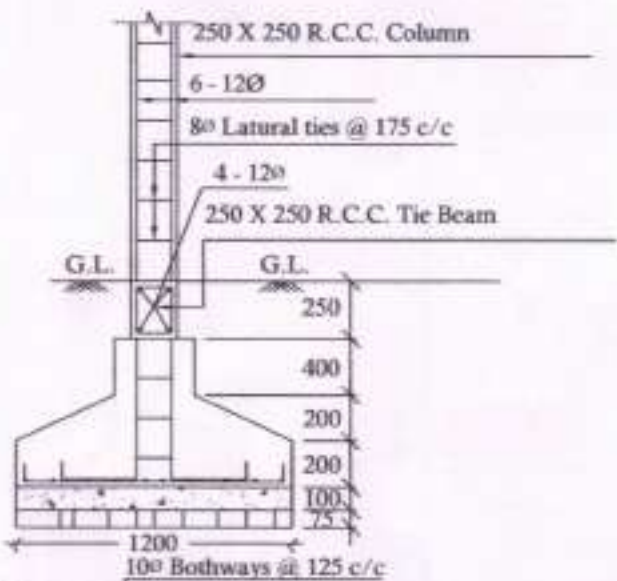


LAYOUT PLAN



Details Of R.C.C Roof Slab & Beam

(SCALE - 1 : 25)



DETAILS OF R. C. C COLUMN

(SCALE - 1 : 25)

E. K.
Chairman
Bahurghat Municipality

S. A. E.
Bahurghat Municipality

Assistant Engineer
Bahurghat Municipality

Executive Officer
Bahurghat Municipality