

ESTIMATE FORM

ENGLISHBAZAR MUNICIPALITY, MALDA

Estimate of Civil Works for Construction of Institutional /Public Toilet Block Beside pump house, near Nibedita Pry. School in ward no - 12, Under Englishbazar Municipality, Malda (W.B). (MODEL NO -F)

Sl. No	Description of Item							Quantity	Rate	Unit	Amount
	Count	No(s)	L	W/B	H/D	Total					
1	Earth work in excavation of foundation trenches or drains, in all sorts of soil (including mixed soil but excluding laterite or sandstone) including removing, spreading or stacking the spoils within a lead of 75 m. as directed. The item includes necessary trimming the sides of trenches, levelling, dressing and ramming the bottom, bailing out water as required complete. (a) Depth of excavation not exceeding 1,500 mm. PWD(WB), S.O.R. Volume- 1 : Building Works w.e.f. 01/11/2017, Item No -2, Page No. - 1										
	Column Footing	4.000	1.000	1.200	1.200	1.125	6.480				
	Tie Beam	2.000	1.000	4.350	0.250	0.475	1.033				
		3.000	1.000	2.325	0.250	0.425	0.741				
	Part beam	1.000	1.000	1.725	0.250	0.425	0.183				
		1.000	1.000	1.200	0.250	0.425	0.128				
		1.000	1.000	1.000	0.250	0.425	0.106				
	Stair	1.000	1.000	2.250	0.750	0.075	0.127				
	water reservior	1.000	1.000	1.550	1.400	1.450	3.147				
							11.945	11.945	11922.00	%Cum	1424.68
2	Earth work in filling in foundation trenches or plinth with good earth, in layers not 2/3 of It. No- 1										
			2/3	11.945			7.963	7.963	7754.00	%Cum	617.45
3	(A) Filling in foundation or plinth by silver sand in layers not exceeding 150 mm as directed and consolidating the same by thorough saturation with water, ramming complete including the cost of supply of sand. (payment to be made on measurement of finished quantity) PWD(WB), S.O.R. Volume- 1 : Building Works w.e.f. 01/11/2017, Item No -4(A), Page No. - 2										
	Toilet, urinal	1.000	1.000	1.725	1.200	0.600	1.242				
		1.000	1.000	1.500	1.200	0.600	1.080				
		1.000	1.000	2.325	1.375	0.600	1.918				
		1.000	1.000	1.725	1.000	0.600	1.035				
		1.000	1.000	1.125	1.000	0.600	0.675				
						5.950	5.950	43131.00	%Cum	2566.29	
4	Single Brick Flat Soling of picked jhama bricks including ramming and dressing bed to proper level and filling joints with local sand. 3rdCORRIGENDA&ADDENDA,Dated:04.06.2018,Page1of 96, PWD(WB), S.O.R. Volume- I : BuildingWorksw.e.f. 01/11/2017, Item No -1, Page No. - 14										
	Column	4.000	1.000	1.200	1.200		5.760				
	Tie Beam	2.000	1.000	4.350	0.250		2.175				
		2.000	1.000	2.325	0.250		1.163				
	Part Beam	1.000	1.000	1.725	0.250		0.431				
		1.000	1.000	1.200	0.250		0.300				
		1.000	1.000	1.000	0.250		0.250				
	Stair	1.000	1.000	2.250	0.750		1.688				
	Floor	1.000	1.000	4.100	2.375		9.738				
	water reservior	1.000	1.000	1.550	1.400		2.170				
						23.675	23.675	322.00	Sq M.	7623.35	

Ordinary Cement concrete (mix 1:2:4) with graded stone chips (20 mm nominal size) excluding shuttering and reinforcement, if any, in ground floor as per relevant IS codes. Rate Analysis Enclosed										
Column	4.000	1.000	1.200	1.200	0.100	0.576				
Tie Beam	2.000	1.000	4.350	0.250	0.100	0.218				
	2.000	1.000	2.325	0.250	0.100	0.116				
Part Beam	1.000	1.000	1.725	0.250	0.075	0.032				
	1.000	1.000	1.200	0.250	0.075	0.023				
	1.000	1.000	1.000	0.250	0.075	0.019				
Stair	1.000	1.000	2.250	0.750	0.100	0.169				
	1.000	1.000	2.250	0.500	0.100	0.113				
	1.000	1.000	2.250	0.250	0.100	0.056				
Plinth Protection	1.000	1.000	17.350	0.500	0.100	0.868				
Floor	1.000	1.000	4.100	2.375	0.100	0.974				
water reservior	1.000	1.000	1.550	1.400	0.075	0.163				
						3.327	3.327	4521.93	Cu.M	15044.46
6 Ordinary Cement concrete (mix 1:1.5:3) with graded stone chips (20 mm nominal size) excluding shuttering and reinforcement if any, in ground floor as per relevant IS codes. (i) Pakur Variety [PWD BUILDING WORKS, Page- 26, It. No- 10. i] Rate Analysis Enclosed										
Footing	4.000	1.000	1.200	1.200	0.200	1.152				
(1.20 + 0.40) / 2 = 0.80	4.000	1.000	0.800	0.800	0.200	0.512				
	4.000	1.000	0.400	0.400	0.300	0.192				
Tie Beam	3.000	1.000	2.325	0.250	0.250	0.436				
Part beam	1.000	1.000	1.200	0.250	0.250	0.075				
Tie Beam	2.000	1.000	4.350	0.250	0.300	0.653				
Part beam	1.000	1.000	1.725	0.250	0.250	0.108				
Part beam	1.000	1.000	1.000	0.250	0.250	0.063				
Col[2.875+0.25+0.6]= 3.725	4.000	1.000	0.250	0.250	3.725	0.931				
Lintel	3.000	1.000	2.325	0.250	0.150	0.262				
	2.000	1.000	4.350	0.250	0.150	0.326				
Protection wall	1.000	1.000	1.725	0.125	0.150	0.032				
	1.000	1.000	1.200	0.125	0.150	0.023				
	1.000	1.000	1.000	0.125	0.150	0.019				
Chazza	3.000	1.000	0.500	0.450	0.100	0.068				
Roof beam	2.000	1.000	4.850	0.250	0.275	0.667				
	3.000	1.000	2.825	0.250	0.175	0.371				
Roof slab 4.85+0.15*2=5.15,	1.000	1.000	5.150	3.125	0.125	2.012				
water reservior Bed	1.000	1.000	1.550	1.400	0.100	0.217				
water reservior Slab	1.000	1.000	1.550	1.400	0.125	0.271				
						8.390	8.390	5052.35	Cu.M	42389.22

mm. thick damp proof with cement concrete (1:1.5:3) (with graded stone aggregate 10 mm normal size) and painting the top surface with a coat of bitumen [VG.40] using 1.7 kg per sq m. including heating the bitumen and cost and carriage of all materials complete. [Bitumen to be supplied by the Agency]

3rd CORRIGENDA & ADDENDA, Dated: 04.06.2018, Page 22 of 96, PWD(WB), S.O.R. Volume - I : Building Works w.e.f. 01/11/2017, Item No.-2, Page No. - 47
Rate Analysis Enclosed

	Tie Beam	2.000	1.000	4.350	0.250		2.175				
		3.000	1.000	2.325	0.250		1.744				
	Part beam	1.000	1.000	1.725	0.125		0.216				
		1.000	1.000	1.200	0.125		0.150				
		1.000	1.000	1.000	0.125		0.125				
							4.410	4.410	245.01	Sq.M.	1080.49
8	125 mm. thick brick work with 1st class bricks in cement mortar (1:4) in ground floor. Rate Analysis Enclosed										
	Partation wall $2.875-0.15 = 2.725$	1.00	1.00	1.73		2.725	4.701				
		1.00	1.00	1.20		2.725	3.270				
		1.00	1.00	1.00		2.725	2.725				
	Parapet wall	1.00	1.00	15.35		0.300	4.605				
							15.301	15.301	668.33	Sq.M.	10226.12
9	Supplying and laying Polythene Sheet (150gm / sq m.) over damp proof course or below flooring or roof terracing or in foundation or in foundation trenches.or PWD(WB), S.O.R. Volume- I : Building Works w.e.f. 01/11/2017, Item No.-3, Page No. - 47										
		1.000	1.000	17.350	0.500		8.675	8.675	24.00	Sq.M.	208.20
10	Hire and labour charges for shuttering with centering and necessary staging upto 4 m using approved stout props and thick hard wood planks of approved thickness with required bracing for concrete slabs, beams and columns, lintels curved or straight including fitting, fixing and striking out after completion of works (upto roof of ground floor) (When the height of a particular floor is more than 4 m the equivalent floor height shall be taken as 4 m and extra for works beyond the initial 4 m ht. shall be allowed under 12 (e) for every 4 m or part thereof) (f) 25 mm to 30 mm shuttering without staging in foundation PWD(WB), S.O.R. Volume- I : Building Works w.e.f. 01/11/2017, Item No.-36, Page No. - 42										
	Footing	4.000	4.000	1.200		0.200	3.840				
	Column pedestal	4.000	4.000	0.400		0.300	1.920				
	Column	4.000	4.000	0.250		0.850	3.400				
	Tie Beam	2.000	2.000	4.350		0.300	5.220				
		3.000	2.000	2.325		0.250	3.488				
	Part beam	1.000	2.000	1.725		0.250	0.863				
		1.000	2.000	1.200		0.250	0.600				
		1.000	2.000	1.000		0.250	0.500				
	water reservior slab side	1.000	1.000	5.900		0.125	0.738				
							20.569	20.569	205.00	Sq.M.	4216.65

... and labour charges for shuttering with centering and necessary staging upto 4 m using approved stout props and thick hard wood planks of approved thickness with required bracing for concrete slabs, beams and columns, lintels curved or straight including fitting, fixing and striking out after completion of works (upto roof of ground floor)
 (When the height of a particular floor is more than 4 m the equivalent floor height shall be taken as 4 m and extra for works beyond the initial 4 m ht. shall be allowed under 12 (e) for every 4 m or part thereof)
 (c) Steel shuttering or 9 to 12 mm thick approved quality ply
 board shuttering in any concrete work
 PWD(WB), S.O.R. Volume- I : Building Works w.e.f. 01/11/2017, Item No.-36, Page No. - 42

Column	4.000	4.000	0.250		2.725	10.900				
Lintel	2.000	2.000	4.850		0.150	2.910				
	3.000	2.000	2.825		0.150	2.543				
Partitaion wall	1.000	2.000	1.725		0.150	0.518				
	1.000	2.000	1.200		0.150	0.360				
	1.000	2.000	1.000		0.150	0.300				
Opening, Door	2.000	1.000	1.050		0.250	0.525				
	2.000	1.000	0.750		0.125	0.188				
Window	3.000	1.000	0.450		0.250	0.338				
Chazza	3.000	1.000	0.500		0.450	0.675				
	3.000	1.000	1.400		0.100	0.420				
Roof beam	4.000	1.000	2.225		0.250	2.225				
	2.000	1.000	4.350		0.275	2.393				
	2.000	1.000	1.725		0.125	0.431				
	2.000	1.000	2.500		0.125	0.625				
Outerside	1.000	1.000	15.350		0.275	4.221				
Roof slab	1.000	1.000	4.850	2.825		13.701				
water reserivior slab bottom	1.000	1.000	1.050	0.900		0.945				
						44.218				
							44.218	363.00	Sq.M.	16051.13
12	Artificial stone in floor, dado, staircase etc with cement concrete (1:2:4) with stone chips, laid in panels as directed with topping made with ordinary or white cement (as necessary) and marble dust in proportion (1:2) including smooth finishing and rounding off corners including raking out joints or roughening of concrete surface and application of cement slurry before flooring works using cement @ 1.75 kg/sq.m all complete including all materials and labour. In ground floor. 3 mm thick topping (High polishing grinding on this item is not permitted with ordinary cement). Using grey cement (ii) 25 mm. thick									
	Roof	1.00	1.00	5.15		3.13	16.094			
							16.094	243.83	Sq.M	3924.2
13	Reinforcement for reinforced concrete work in all sorts of structures including distribution bars, stirrups, binders etc initial straightening and removal of loose rust (if necessary), cutting to requisite length, hooking and bending to correct shape, placing in proper position and binding with 16 gauge black annealed wire at every intersection, complete as per drawing and direction. 10th CORRIGENDA & ADDENDA, Dated: 22.01.2020, Page - 1 of 6, PWD(WB), S.O.R. Volume - I : Building Works w.e.f. 01/11/2017, Item No.-40, Page No - 43 (a) For works in foundation and upto roof of ground floor/upto 4 m (i) For steel/Mild Steel III. OTHER MANUFACTURERS NOT SPECIFIED									
	1.20% of Item No(6)	0.012	8.390	7.850		0.790				
							0.790	58229.74	MT	46001.49

collapsible gate with 40mm x 40mm x 6mm Tee as top and bottom guide rail, 20mm x 10mm x 2mm vertical channels 100mm apart in fully stretched position 20mm x 5mm M.S. flats as collapsible bracings properly rivetted and washered including 38mm steel rollers including locking arrangements, fitted and fixed in position with lugs set in cement concrete and including cutting necessary holes, chasing etc in walls, floors etc. and making good damages complete. (Add extra @ 1% for each addl. floor upto 4th floor and @ 1.25% for each addl. floor above 4th floor) In ground floor 3rd CORRIGENDA&ADDENDA, Dated 04.06.2018, Page92 of 96.PWD(WB), S O R Volume-1 Building Works w.e.f. 01/11/2017, Item No.-18, Page No. - 106												
	1.00		2.05	2.10		4.305	4.305	4351.00	Sq.M	18731.06		
15	Brick work with 1st class bricks in cement mortar (1:6) (b) In superstructure, ground floor Rate Analysis Enclosed $[3.0 - (0.375 + 0.15) = 2.475]$											
	1.000	3.000	2.325	0.250	2.475	4.316						
	1.000	2.000	4.350	0.250	2.475	5.383						
	Deduction											
	Window											
	-3.000	1.000	0.450	0.250	0.600	-0.203						
	Door											
	-1.000	1.000	2.050	0.250	2.100	-1.076						
						8.420	8.420	5095.88	Cu.M	42907.31		
16	Brick work with 1st class bricks in cement mortar (1:6) (a) In foundation and plinth Rate Analysis Enclosed											
	1.000	2.000	4.350	0.250	0.600	1.305						
	above Tie Beam											
	1.000	3.000	2.850	0.250	0.600	1.283						
	water reservoir											
	1.000	1.000	5.980	0.250	1.200	1.794						
						4.382	4.382	4872.88	Cu.M	21352.96		
17	Labour for Chipping of concrete surface before taking up Plastering work [PWD BUILDING WORKS, Page- 192, It. No- 1]											
	4.000	4.000	0.250		3.350	13.400						
	Column											
	3.000	2.000	2.325		0.150	2.093						
	Lintel											
	2.000	2.000	4.350		0.150	2.610						
	Partition wall											
	1.000	2.000	1.600		0.150	0.480						
	Below opening											
	1.000	2.000	1.200		0.150	0.360						
	Window											
	1.000	2.000	1.000		0.150	0.300						
	Door											
	3.000	1.000	0.450		0.250	0.338						
	Chazza											
	2.000	1.000	0.750		0.125	0.188						
	Roof beam											
	3.000	1.000	1.400		0.100	0.420						
	In side											
	4.000	1.000	4.850		0.275	5.335						
	Inside											
	6.000	1.000	2.825		0.175	2.966						
	Roof											
	2.000	2.000	4.350		0.125	2.175						
	Roof											
	2.000	1.000	2.325		0.125	0.581						
	1.000	1.000	4.350		2.825	12.289						
						44.060	44.060	21.000	Sq.M	925.26		
18	Plaster (to wall, floor, ceiling etc.) with sand and cement mortar including rounding off or chamfering corners as directed and raking out joints including throating, nosing and drip course, scaffolding/staging where necessary (Ground floor). [Excluding cost of chipping over concrete surface] (i) With 1:6 cement mortar (c) 15 mm thick plaster Rate Analysis Enclosed											

	1.000	2.000	4.850		3.900	37.830				
	1.000	2.000	2.825		3.900	22.035				
Chazza	3.000	1.000	0.450	0.500		0.675				
	3.000	1.000	1.400		0.100	0.420				
Inside	4.000	1.000	2.325		3.900	36.270				
	2.000	1.000	4.850		3.900	37.830				
Partion wall	1.000	1.000	1.725		2.875	4.959				
	1.000	1.000	1.200		2.875	3.450				
	1.000	1.000	1.000		2.875	2.875				
Parapet wall	1.000	2.000	4.730	0.125		1.183				
	1.000	2.000	2.700	0.125		0.675				
Inside	1.000	2.000	4.350		0.300	2.610				
	1.000	2.000	4.325		0.300	2.595				
Deduction	-2.000	2.000	1.050		2.100	-8.820				
	-2.000	2.000	0.750		2.100	-6.300				
	-3.000	2.000	0.450		0.600	-1.620				
Water Reservior	1.00	1.00	3.90		1.200	4.680				
						141.347				
							141.347	139.48	Sq.M	19715.08
19	Plaster (to wall, floor, ceiling etc.) with sand and cement mortar including rounding off or chamfering corners as directed and raking out joints including throating, nosing and drip course, scaffolding/staging where necessary (Ground floor). [Excluding cost of chipping over concrete surface] (ii) With 1:4 cement mortar (c) 10 mm thick plaster Rate Analysis Enclosed									
	Chazza	3.00	1.00	0.45		0.500	0.675			
	Roof	1.00	1.00	4.35		2.325	10.114			
						10.789				
							10.789	124.48	Sq.M	1343.01
20	Neat cement punning about 1.5mm thick in wall, dado, window sill, floor etc. NOTE: Cement 0.152 cu.m per 100 sq.m. Rate Analysis Enclosed									
	G.L to P.L	1.00	1.00	15.35		0.60	9.210			
	Water Reservior	1.00	1.00	3.90		1.20	4.680			
							13.890			
							13.890	32.72	Sq.M	454.48
21	Supplying, fitting and fixing fibre reinforced polymer (FRP) Composite door frame as per approved section with glass fibre reinforced plastic moulded skins and a special sandwich core, so as to impart monolithic composite structure as per approved technology of Department of Science and Technology (DST) to satisfy IS: 4020 door testing performance criteria. (i) 66mm x 90mm [PWD BUILDING WORKS, Page- 115, It. No- 3 i]									
		1.00	2.00	4.95			9.900			
							9.900	497.00	Mtr.	4920.30
22	Supplying, fitting & fixing fibre reinforced polymer (FRP) Composite door shutters as per approved design with glass fibre reinforced plastic moulded skins and a special sandwich core, so as to impart monolithic composite structure as per approved technology of Department of Science and Technology (DST) to satisfy IS: 4020 door testing performance criteria. In ground floor (ii) 32 mm thick [PWD BUILDING WORKS, Page- 125, It. No- 14 i]									
		1.00	2.00		0.75	2.10	3.150			
							3.150	2763.00	Sq.M	8703.45
23	Anodised aluminium barrel / tower / socket bolt (full covered) of approved manufactured from extruded section conforming to I.S. 204/74 fitted and fixed with cadmium plated screws. (vii) 225mm long x 10mm dia. bolt. [PWD BUILDING WORKS, Page- 144, It. No- 26 vii]									
							2.000	84.00	Each	168.00

Applying and Planting of different plant / trees (Supplying well grown plants bushy and healthy, minimum height as specified i.e. exposed height including all leads & lift, carriage, handling, manuring, applying pesticides and fertilizer etc i) Furcaria variegated 10-12 leaves in height 20-30cm in earthen pots of size 25cm ii) Furcaria variegated 10-12 leaves in height 20-30cm in earthen pots of size 25cm iii) Furcaria variegated 10-12 leaves in height 20-30cm in earthen pots of size 25cm iv) Furcaria variegated 10-12 leaves in height 20-30cm in earthen pots of size 25cm					
43	x) Ficus blaki (F. Vitcon) well branched (Bushy) of height 120cm - 135 cm in earthen pot of size 30cm. [PWD BUILDING WORKS, Page- 261, It. No- 9 x]	7.000	162.00	Each	1134.00
44	xxvi) Areaea Palm 4 - 5 suckers of height 90 cm to 105 cm in earthen pots of size 25 cm. [PWD BUILDING WORKS, Page- 262, It. No- 9. xxvi]	3.000	187.00	Each	561.00
SANITARY AND PLUMBING WORKS					
45	Supplying, fitting and fixing Anglo-Indian W.C. in white glazed vitreous china ware of approved make complete in position with necessary bolts, nuts etc (a) With 'P' trap (with vent) [SANITARY AND DRAINAGE WORKS, Page- 79, It. No- 3. a]	2.000	3104.00	Each	6208.00
46	Supplying, fitting and fixing Closet seat of approved make with lid and C.P hinges, rubber buffer and brass screws complete. (b) Anglo Indian (i) Plastic (hallow type) black [SANITARY AND DRAINAGE WORKS, Page- 81, It. No- 10. b.i]	2.000	371.00	Each	742.00
47	Supplying, fitting and fixing Flat back urinal (half stall urinal) in white vitreous chinaware of approved make in position with brass screws on 75 mm X 75 mm X 75 mm wooden blocks complete (i) 635 mm X 395 mm X 420 mm [SANITARY AND DRAINAGE WORKS, Page- 80, It. No- 6. i]	2.000	2869.00	Each	5738.00
48	Supplying, fitting and fixing Squating plate with integral flushing in white vitreous chinaware of approved make in cement concrete (6:3:1) with jhama chips complete. (Payment of concrete will be paid separately). (i) 450 mm X 350 mm [SANITARY AND DRAINAGE WORKS, Page- 80, It. No- 7. i]	1.000	881.00	Each	881.00
49	Supplying, fitting and fixing 10 litre porcelain low-down cistern of approvedmakewitheither sidor bottomlet, sideoverflow, brackets complete with all internal PVC fittings. White [SANITARY AND DRAINAGE WORKS, Page- 36, It. No- 1]	2.000	2297.00	Each	4594.00
50	Supplying, fitting and fixing 32 mm dia. Flush Pipe of approved make with necessary fixing materials and clamps complete. i) Polythene Flush Pipe [SANITARY AND DRAINAGE WORKS, Page- 81, It. No- 11. i]	2.000	155.00	Each	310.00
51	Supplying, fitting and fixing urinal flush pipe fittings of approved brand. (a) C.P. urinal flush pipe fittings range of othe [SANITARY AND DRAINAGE WORKS, Page- 81, It. No- 12. a]	3.000	414.00	Each	1242.00
52	Supplying, fitting and fixing white vitreous china best quality approved make wash basin with C.I brackets on 75 mm X 75 mm wooden blocks, C.P. waste fittings of 32 mm dia., one approved quality brass C.P. pillar cock of 15 mm dia., C.P. chain with rubber plug of 30 mm dia., approved quality P.V.C. waste pipe with C.P. nut 32 mm dia., 900 mm long approved quality P.V.C. connection pipe with heavy brass C.P. nut including mending good all damages and painting the brackets with two coats of approved paint. (ii) 550 mm X 400 mm size [SANITARY AND DRAINAGE WORKS, Page- 41, It. No- 2. ii]	2.000	2208.00	Each	4416.00
53	Supplying, fitting and fixing pedestal of approved make for wash basin (white) [SANITARY AND DRAINAGE WORKS, Page- 41, It. No- 3]	2.000	1497.00	Each	2994.00
54	Supplying, fitting and fixing approved brand P.V.C. CONNECTOR white flexible, with both ends coupling with heavy brass C.P. nut, 15 mm dia. (iii) 600 mm long [SANITARY AND DRAINAGE WORKS, Page- 43, It. No- 9. iii]	5.000	107.00	Each	535.00
55	Supplying, fitting and fixing approved brand 32 mm dia. P.V.C. waste pipe, with PVC coupling at one end fitted with necessary clamps (iv) 1050 mm long [SANITARY AND DRAINAGE WORKS, Page- 43, It. No- 10. iv]	4.000	91.00	Each	364.00
56	Supplying, fitting and fixing shower of approved brand and make (f) Hand Shower (Health Faucet) with 1mtr Flexible Tube with Wall Hook(Equivalent to Code No. 573 & Model -ALLIED of Jaqur or similar) [SANITARY AND DRAINAGE WORKS, Page- 3, It. No- 3. f]	2.000	1251.00	Each	2502.00

	(Chromium plated Bib Cock long body with wall flange with aerator (Equivalent to Code No. 512 & Model- Tropical / Sunthing Special of ESSCO or similar brand)								
	[SANITARY AND DRAINAGE WORKS, Page- 6, It. No- 7 a ii]								
59	(b) (i) Chromium plated Stop Cock (Equivalent to Code No. 513(A) & 513(B) & Model - Tropical / Sunthing Special of ESSCO or similar [SANITARY AND DRAINAGE WORKS, Page- 6, It. No- 7, b i]	1 000	493.00 ✓	Each		493.00 ✓			
	(d) (i) Chromium plated angular Stop Cock with wall flange (Equivalent to Code No. 5053 & Model - Florentine of Jaquar or similar brand).								
60	[SANITARY AND DRAINAGE WORKS, Page- 6, It. No- 7, d i]	5 000	815.00 ✓	Each		4075.00 ✓			
61	Supplying, fitting and fixing pillar cock of approved make a) (i) CP Pillar Cock - 15 mm (Equivalent to Code No. 507 & Model - Tropical / Sunthing Special of ESSCO or similar brand)	2 000	555.00 ✓	Each		1110.00 ✓			
62	Supplying, fitting and fixing GI pipes of TATA make with all necessary accessories, specials viz. socket, bend, tee, union, cross, elbo, nipple, long screw, reducing socket, reducing tee, short piece etc. fitted with holder bats clamps, including cutting pipes, making threads, fitting, fixing etc. complete in all respect including cost of all necessary fittings as required, jointing materials and two coats of painting with approved paint in many position above ground. (Payment will be made for accessories, specials. Payment for painting will be made separately) a) For Exposed Work PVC Pipes (Dia) 25 mm Dia [SANITARY AND DRAINAGE WORKS, Page- 12, It. No- 19, i a]	15 000	355.00 ✓	Mtr.		5325.00 ✓			
63	Supplying, fitting and fixing gunmetal wheel valve of approved brand and make tested to 21 kg per sq. cm. (for water lines only) (vi) 25 mm dia [SANITARY AND DRAINAGE WORKS, Page- 5, It. No- 5, vii]	10 000	177.00 ✓	Mtr		1770.00 ✓			
64	Supplying P.V.C. water storage tank of approved quality with closed top with lid (Black) - Multi layer (b) 1000 litre capacity [SANITARY AND DRAINAGE WORKS, Page 37, It. No- 6 b]	2 000	778.00 ✓	Each		1556.00 ✓			
65	Labour for hoisting plastic water storage tank (i) Up to 1500 litre capacity. [SANITARY AND DRAINAGE WORKS, Page- 37, It. No- 10, i]	1 000	96.00 ✓	Each		96.00 ✓			
66	Labour for punching hole in plastic water storage tank upto 50 mm dia. [SANITARY AND DRAINAGE WORKS, Page- 38, It. No- 13]	2 000	19.00 ✓	Each		38.00 ✓			
67	Supply of UPVC pipes (B Type) & fittings conforming to IS-13592- 1992 (A) (i) Single Socketed 3 Meter Length, (b) 110 mm PWD S&P Schedule, Page No-68 Item No. 23 (A)(i)(b)	30 000	292.00 ✓	Mtr		8760.00 ✓			
	(B) Fittings (i) Coupler, (b) 110 mm	8 000	85.00 ✓	Each		680.00 ✓			
	(ii) Plain Tee, (b) 110 mm	12 000	85.00 ✓	Each		1020.00 ✓			
	(iii) Door Tee, (b) 110 mm	10 000	195.00 ✓	Each		1950.00 ✓			
	(ix) Bend 45°, (b) 110 mm	10 000	89.00 ✓	Each		890.00 ✓			
	(xi) Door Bend (T.S.), (b) 110 mm	7 000	147.00 ✓	Each		1029.00 ✓			
	(xv) Pipe Clip, (b) 110 mm	30 000	21.00 ✓	Each		630.00 ✓			
	(xvii) W.C. Connector (150 mm long) 125 X 110 (W/W.C Ring) 75 mm	4 000	142.00 ✓	Each		568.00 ✓			
	(xxx) Plain Floor Trap with Top tile & Strainer 75 mm	7 000	144.00 ✓	Each		1008.00 ✓			
	(l) Rubber Ring, (b) 110 mm	15 000	17.00 ✓	Each		255.00 ✓			
	(C) Rubber Lubricant 500 ML.	1 000	187.00 ✓	500 ML		187.00 ✓			
	(D) Solvent Cement 250 ML.	1 000	103.00 ✓	250 ML		103.00 ✓			

	Supplying, fitting and fixing U.P.V.C. pipes for above ground work including cost of joining materials etc. fitting and fixing all necessary specials, cutting pipes, cutting holes in soil pipeline including specials (B) Under ground, (ii) 110 mm dia (PWD S&P Schedule, (P - 74, Item No - 24 (B))	20 000	84 00	Mtr	1680 00
70	Supplying, fitting & fixing UPVC pipes A- Type and fittings conforming to IS 13592-1992 with all necessary, clamps nails, including making holes in walls, floor etc. cutting trenches in any soil through masonry concrete structures etc if necessary and mending good damages including jointing with jointing materials (Spun Yarn, Valamoid/Bitumen/M-Seal etc) complete. A) UPVC Pipes: (i) 75 mm. Dia. (P - 212, Item No- 21 (A)(i), (B),(c),(i) & (B), (d),(i), Pwd volume- 1, 2017)	20 000	188 00	Mtr	3760 00
71	B) UPVC Fittings: c) Bend 87.5 degree (i) 75 mm. Dia B) UPVC Fittings: d) Shoe (i) 75 mm Dia	6 000	95 00	Mtr	570 00
72	Constructing inspection pit of inside measurement 600mm X 600mm X upto 600mm (depth) with 250 mm thick 1st. class brick work in cement mortar (1:4) on all sides, bottom of the pit consisting of 100 mm thick cement concrete (1:3:6) with stone chips over a layer of jhana brick flat soling. 15 mm thick (1:4) cement plaster to inside walls and out-side walls upto G.L. and 20 mm thick (1:4) plaster to bottom of the pit, providing necessary invert with cement concrete (1:3:6) with stone chips as per direction, neat cement finishing to entire internal surfaces, top of the pit covered with 100 mm thick R.C.C. slab (1:1:5:3) with stone chips and necessary reinforcements upto 1% and shuttering including 6 mm thick cement plaster (1:4) in all external surfaces of the slab and one 560 mm dia. R.C.C. manhole cover of approved make supplied, fitted and fixed in the slab with necessary fittings, necessary earthwork in excavation in all sorts of soil, filling sides of the pit with earth and removing spoils after work complete in all respect with all costs of labour and materials i) With Pakur variety (OTHER MANUFACTURES NOT SPECIFIED) 7th CORRIGENDA & ADDENDA, Dated: 22 01 2020, Page 1 of 7, PWD(WB), S.O.R. Volume - II Sanitary & Plumbing Works w.e.f. 01/11/2017, Item No. - 1, Page No - 87	2 000	78 00	Mtr	156 00
73	Supplying, fitting and fixing 18 mm thick marble partition slab with chawk doongri marble square cut, both sides polished with two front corners rounded and edges polished. PWD(WB), S.O.R. Volume - II - Sanitary & Plumbing Works w.e.f. 01/11/2017, Item No. - 13, Page No - 81	2 000	6648 00	Each	13296 00
74	Construction of septic tank of different capacities as per approved drawing with 1st class brick work in cement mortar (1:4) including two 560 mm dia. R.C.C. manhole cover (heavy type) of approved make supplied, fitted and fixed in the 100mm thick R.C.C.(1:5:3) top slab with necessary fittings, 20mm thick cement plaster (4 : 1) with neat cement finish to the internal surfaces and 15 mm thick cement plaster (4 : 1) to outside wall upto 200 mm below G.L floor finished with 25 mm thick grey artificial stone over 100 mm thick R.C.C.(1:5:3) bottom slab including supplying, fitting and fixing all necessary specials, fittings, S.W. tees, C.I. floor rest etc. including excavation earth in all sorts of soil, shoring, bailing out and pumping out water as necessary, ramming, dressing the bed and refilling the sides of the tanks with earth, removing spoils, filling up the chamber with clear water, removing foreign materials from the chamber and including constructing attached inspection pit as per approved drawing and connecting all necessary pipes, joints etc. with internal plaster work and artificial stone flooring is to be done with admixture of water proofing compound @ 0.5% by weight of cement with all costs of labour and materials Note:- (i) Finished level of Septic Tank should be 400 mm from Ground Level (ii) Height of 50 mm Ventilation pipe & Mosquito proof mesh, should be followed as per IS 2470, Part-1 Payment will be made separately on the basis of actual height based on relevant I.S Code. 7th CORRIGENDA & ADDENDA, Dated: 22 01 2020, Page 3 of 7, PWD(WB), S.O.R. Volume - II Sanitary & Plumbing Works w.e.f. 01/11/2017, Item No. - 3, Page No - 88 (ii) For 20 users i) With Pakur variety (OTHER MANUFACTURES NOT SPECIFIED)	0 930	1426 00	Sq.m	1326 18
75	Construction of circular soak well 2.5 metre deep in all types of sandy soils with dry brick work upto 1.6 metre from the bottom leaving 150 mm intermediate cement brick work (1:4) band all round and cement brick work (1:4) upto 0.90 metre from top with 20mm thick cement plastering (1:4) to inside face upto the depth of cement brick work, 15mm thick cement plaster (1:4) on outer face from top of the well upto G.L. and 6 mm thick cement plaster (1:4) on top of the R.C.C. cover slab including filling bottom 1.00 metre of inside of the well with brick metal (50 mm to 63 mm size) including R.C.C. cover slab of 100 mm thick with cement cone (1:1:5:3) with stone chips with necessary reinforcement and shuttering including one 560 mm dia. R.C.C. manhole cover (heavy type) of approved make supplied, fitted and fixed in the cover slab with necessary fittings, making necessary arrangements for pipe connections, excavation of well including shoring, dewatering and removing the excess earth from the premises as per direction complete in all respect with all costs of labour and materials. With 250 mm thick dry brick work and 250 mm thick cement brick work (1:6) and 1.00m inside dia For-OTHER MANUFACTURES NOT SPECIFIED)	1 000	15451 00	Each	15451 00

78	Supplying, fitting and fixing towel rail with two brackets (a) C.P. over brass (ii) 25 mm dia. and 600 mm long PWD S&P Schedule, P No 82, 1 No-22 (a)(ii) Supplying, fitting and fixing bevelled edged mirror 5.5 mm thick silver red as per I.S. 3438 / 1965 together with brass C.P. hinges (ii) 600 mm X 450 mm PWD S&P Schedule, P-81, 1I-15(ii)	2 000	430.00	Each	860.00
79	Supplying, fitting and fixing soap holder (b) Fibre glass Sanitary and plumbing work schedule P-82, 1I-18(b) (a) Ordinary type with 5.5 mm sheet glass (i) 450 mm X 125 mm Sanitary and plumbing work schedule P-81, 1I-16(a)(i)	2 000	484.00	Each	968.00
		2 000	58.00	Each	116.00
		2 000	341.00	Each	682.00
		Total Amount excluding GST			538252.29
		Add CGST @ 9%			48442.71
		Add SGST @ 9%			48442.71
		Total amount including GST			635137.72
		Add Labour Welfare Cess. @ 1%			6351.38
		Total Amount Including Labour Welfare Cess.			641489.09
		Add Contingency @3%			19054.13
		Total Amount Including L.W.C. and contingency			660543.22
		Say Rupees			660543.00

S A E (C)
English Bazar Municipality
MALDA

Chairman
English Bazar Municipality
MALDA

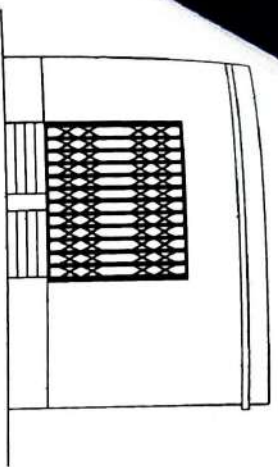
Junior Engineer
Malda Division
M. E. Directorate
Govt. of West Bengal

Assistant Engineer
Malda Division
M.E. Directorate
Dept. Of UD & MA
Govt. Of West Bengal

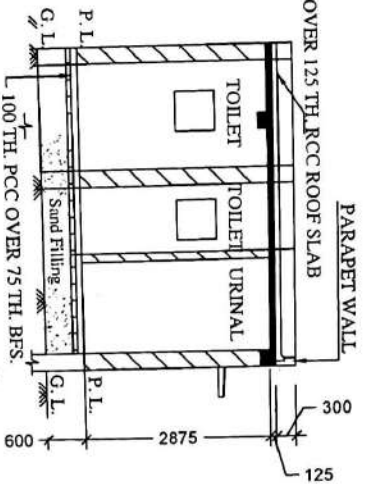
Executive Engineer
Malda Division
M.E. Directorate
Dept. of UD & MA
Govt. of West Bengal

Junior Engineer
Malda Division
M. E. Directorate
Govt. of West Bengal

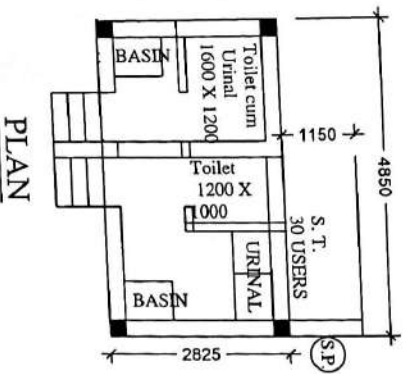
MODEL DRAWING FOR CONSTRUCTION OF C. T./P.T.
TOILET SEATS 2 NOS URINAL 3 NOS
MODEL NO.-F



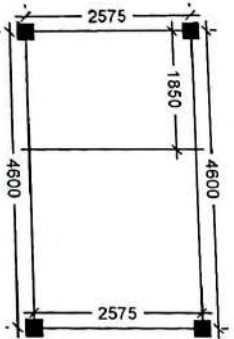
FRONT ELEVATION



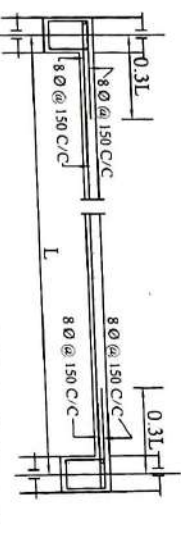
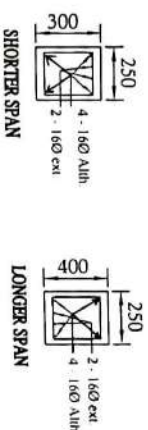
SECTION - 'A - A'



PLAN

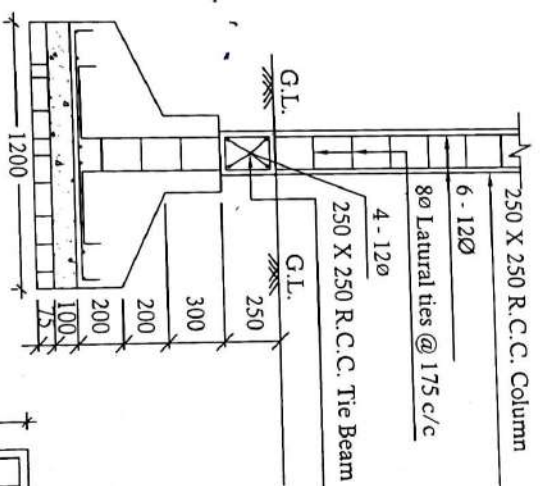


LAYOUT PLAN



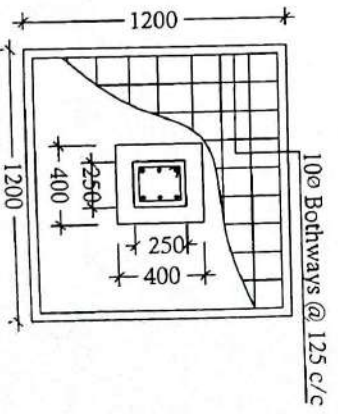
Details of R.C.C Roof Slab & Beam

(SCALE - 1 : 25)



DETAILS OF R. C. C COLUMN

(SCALE - 1 : 25)



Answer

3/10/25

[Signature]

S. A. E. (C)
English Bazar Municipality
MALDA

Assistant Engineer
Malda Division
M. E. Directorate
Dept. Of UD & MA
Govt. Of West Bengal

Chairman
English Bazar Municipality
MALDA

