

## ESTIMATE FORM

## ENGLISHBAZAR MUNICIPALITY, MALDA

Estimate of Civil Works for Construction of Institutional /Public Toilet Block at Netaji Park Durga Mandap (Lane-B) in ward no - 25, Under Englishbazar Municipality, Malda (W.B). (MODEL NO -F)

Sl.No	Description of Item						Quantity	Rate	Unit	Amount	
	Count	No(s)	L	W/B	H/D	Total					
1	Earth work in excavation of foundation trenches or drains, in all sorts of soil (including mixed soil but excluding laterite or sandstone) including removing, spreading or stacking the spoils within a lead of 75 m. as directed. The item includes necessary trimming the sides of trenches, levelling, dressing and ramming the bottom, bailing out water as required complete. (a) Depth of excavation not exceeding 1,500 mm. PWD(WB), S.O.R. Volume- 1 : Building Works w.e.f. 01/11/2017, Item No -2, Page No - 1										
	Column Footing	4.000	1.000	1.200	1.200	1.125	6.480				
	Tie Beam	2.000	1.000	4.350	0.250	0.475	1.033				
		3.000	1.000	2.325	0.250	0.425	0.741				
	Part beam	1.000	1.000	1.725	0.250	0.425	0.183				
		1.000	1.000	1.200	0.250	0.425	0.128				
		1.000	1.000	1.000	0.250	0.425	0.106				
	Stair	1.000	1.000	2.250	0.750	0.075	0.127				
	water reservoir	1.000	1.000	1.550	1.400	1.450	3.147				
							11.945	11.945	11927.00	%Cum	1424.68
2	Earth work in filling in foundation trenches or plinth with good earth, in layers not										
	2/3 of It. No- 1		2/3	11.945			7.963	7.963	7754.00	%Cum	617.45
3	(A) Filling in foundation or plinth by silver sand in layers not exceeding 150 mm as directed and consolidating the same by thorough saturation with water, ramming complete including the cost of supply of sand. (payment to be made on measurement of finished quantity) PWD(WB), S.O.R. Volume- I : Building Works w.e.f. 01/11/2017, Item No.-4(A), Page No. - 2										
	Toilet, urinal	1.000	1.000	1.725	1.200	0.600	1.242				
		1.000	1.000	1.500	1.200	0.600	1.080				
		1.000	1.000	2.325	1.375	0.600	1.918				
		1.000	1.000	1.725	1.000	0.600	1.035				
		1.000	1.000	1.125	1.000	0.600	0.675				
								5.950	5.950	43131.00	%Cum
4	Single Brick Flat Soling of picked jhama bricks including ramming and dressing bed to proper level and filling joints with local sand. 3rdCORRIGENDA&ADDENDA,Dated:04.06.2018,Page1of 96, PWD(WB), S.O.R. Volume- I : BuildingWorksw.e.f. 01/11/2017, Item No.-1, Page No. - 14										
	Column	4.000	1.000	1.200	1.200		5.760				
	Tie Beam	2.000	1.000	4.350	0.250		2.175				
		2.000	1.000	2.325	0.250		1.163				
	Part Beam	1.000	1.000	1.725	0.250		0.431				
		1.000	1.000	1.200	0.250		0.300				
		1.000	1.000	1.000	0.250		0.250				
	Stair	1.000	1.000	2.250	0.750		1.688				
	Floor	1.000	1.000	4.100	2.375		9.738				
	water reservoir	1.000	1.000	1.550	1.400		2.170				
							23.675	23.675	322.00	Sq M	7623.35

Ordinary Cement concrete (mix 1:2:4) with graded stone chips (20 mm nominal size) excluding shuttering and reinforcement, if any, in ground floor as per relevant IS codes Rate Analysis Enclosed											
Column	4.000	1.000	1.200	1.200	0.100	0.576					
Tie Beam	2.000	1.000	4.350	0.250	0.100	0.218					
	2.000	1.000	2.325	0.250	0.100	0.116					
Part Beam	1.000	1.000	1.725	0.250	0.075	0.032					
	1.000	1.000	1.200	0.250	0.075	0.023					
	1.000	1.000	1.000	0.250	0.075	0.019					
Stair	1.000	1.000	2.250	0.750	0.100	0.169					
	1.000	1.000	2.250	0.500	0.100	0.113					
	1.000	1.000	2.250	0.250	0.100	0.056					
Plinth Protection	1.000	1.000	17.350	0.500	0.100	0.868					
Floor	1.000	1.000	4.100	2.375	0.100	0.974					
water reserrior	1.000	1.000	1.550	1.400	0.075	0.163					
						3.327	3.327	4521.93	Cu.M	15044.46	
6	Ordinary Cement concrete (mix 1:1.5:3) with graded stone chips (20 mm nominal size) excluding shuttering and reinforcement if any, in ground floor as per relevant IS codes. (i) Pakur Variety [PWD BUILDING WORKS, Page- 26, It. No- 10. i] Rate Analysis Enclosed										
Footing	4.000	1.000	1.200	1.200	0.200	1.152					
$(1.20 + 0.40) / 2 = 0.80$	4.000	1.000	0.800	0.800	0.200	0.512					
	4.000	1.000	0.400	0.400	0.300	0.192					
Tie Beam	3.000	1.000	2.325	0.250	0.250	0.436					
Part beam	1.000	1.000	1.200	0.250	0.250	0.075					
Tie Beam	2.000	1.000	4.350	0.250	0.300	0.653					
Part beam	1.000	1.000	1.725	0.250	0.250	0.108					
Part beam	1.000	1.000	1.000	0.250	0.250	0.063					
$Col[2.875+0.25+0.6]=$ 3.725	4.000	1.000	0.250	0.250	3.725	0.931					
Lintel	3.000	1.000	2.325	0.250	0.150	0.262					
	2.000	1.000	4.350	0.250	0.150	0.326					
Protection wall	1.000	1.000	1.725	0.125	0.150	0.032					
	1.000	1.000	1.200	0.125	0.150	0.023					
	1.000	1.000	1.000	0.125	0.150	0.019					
Chazza	3.000	1.000	0.500	0.450	0.100	0.068					
Roof beam	2.000	1.000	4.850	0.250	0.275	0.667					
	3.000	1.000	2.825	0.250	0.175	0.371					
Roof slab $4.85+0.15*2=5.15,$	1.000	1.000	5.150	3.125	0.125	2.012					
water reserrior Bed	1.000	1.000	1.550	1.400	0.100	0.217					
water reserrior Slab	1.000	1.000	1.550	1.400	0.125	0.271					
						8.390	8.390	5052.35	Cu.M	42389.22	



Hire and labour charges for shuttering with centering and necessary staging upto 4 m using approved stout props and thick hard wood planks of approved thickness with required bracing for concrete slabs, beams and columns, lintels curved or straight including fitting, fixing and striking out after completion of works (up to roof of ground floor)

(When the height of a particular floor is more than 4 m the equivalent floor height shall be taken as 4 m and extra for works beyond the initial 4 m ht shall be allowed under 12 (e) for every 4 m or part thereof)

(c) *Steel shuttering 90x12mm thick approved quality ply board shuttering in any concrete work*  
 PWD(WB), S O R, Volume - 1, Building Works w e f  
 01/11/2017, Item No -36, Page No. - 42

Column	4.000	4.000	0.250	2.725	10.900				
Lintel	2.000	2.000	4.850	0.150	2.910				
	3.000	2.000	2.825	0.150	2.543				
Partition wall	1.000	2.000	1.725	0.150	0.518				
	1.000	2.000	1.200	0.150	0.360				
	1.000	2.000	1.000	0.150	0.300				
Opening, Door	2.000	1.000	1.050	0.250	0.525				
	2.000	1.000	0.750	0.125	0.188				
Window	3.000	1.000	0.450	0.250	0.338				
Chazza	3.000	1.000	0.500	0.450	0.675				
	3.000	1.000	1.400	0.100	0.420				
Roof beam	4.000	1.000	2.225	0.250	2.225				
	2.000	1.000	4.350	0.275	2.393				
	2.000	1.000	1.725	0.125	0.431				
	2.000	1.000	2.500	0.125	0.625				
Outerside	1.000	1.000	15.350	0.275	4.221				
Roof slab	1.000	1.000	4.850	2.825	13.701				
water reservior slab bottom	1.000	1.000	1.050	0.900	0.945				
					44.218				
12					44.218		363.00	Sq M	16051.13
<p>Artificial stone in floor, dado, staircase etc with cement concrete (1:2:4) with stone chips, laid in panels as directed with topping made with ordinary or white cement (as necessary) and marble dust in proportion (1:2) including smooth finishing and rounding off corners including raking out joints or roughening of concrete surface and application of cement slurry before flooring works using cement @ 1.75 kg/sq m all complete including all materials and labour.</p> <p>In ground floor.</p> <p>3 mm. thick topping (High polishing grinding on this item is not permitted with ordinary cement)</p> <p>Using grey cement</p> <p>(ii) 25 mm. thick</p>									
	Roof	1.00	1.00	5.15	3.13	16.094			
13						16.094	243.83	Sq M	3924.2
<p>Reinforcement for reinforced concrete work in all sorts of structures including distribution bars, stirrups, binders etc. Initial straightening and removal of loose rust (if necessary), cutting to requisite length, hooking and bending to correct shape, placing in proper position and binding with 16 gauge black annealed wire at every intersection, complete as per drawing and direction.</p> <p>10th CORRIGENDA &amp; ADDENDA, Dated: 22.01.2020, Page - 1 of 6, PWD(WB), S O R, Volume - 1, Building Works w e f 01/11/2017, Item No.-40, Page No. - 43</p> <p>(a) For works in foundation and up to roof of ground floor/up to 4 m</p> <p>(i) For steel/Mild Steel</p> <p>III. OTHER MANUFACTURERS NOT SPECIFIED</p>									
	1.20% of Item No(6)	0.012	8.390	7.850		0.790		MT	46001.49
						0.790	58229.74		

<p>Collapsible gate with 40mm x 40mm x 6mm Tee as top and bottom guide rail, 20mm x 10mm x 2mm vertical channels 100mm apart in fully stretched position 20mm x 5mm M.S. flats as collapsible bracings properly riveted and washered including 38mm steel rollers including locking arrangements, fitted and fixed in position with lugs set in cement concrete and including cutting necessary holes, chasing etc. in walls, floors etc. and making good damages complete. (Add extra @ 1% for each addl. floor upto 4th floor and @ 1.25% for each addl. floor above 4th floor) In ground floor: 3rd CORRIGENDA&amp;ADDENDA, Dated 04.06.2018, Page92 of 96,PWD(WB), S.O.R Volume- 1 Building Works w e f 01/11/2017, Item No.-18, Page No - 106</p>										4.305	4.305	4351.00	Sq.M	18731.06			
<p>15 Brick work with 1st class bricks in cement mortar (1:6) (b) In superstructure, ground floor Rate Analysis Enclosed</p>										1.00	2.05	2.10	4.305	4.305	4351.00	Sq.M	18731.06
<p>3.0-(0.375+0.15) = 2.475]</p>										1.000	3.000	2.325	0.250	2.475	4.316		
Deduction										1.000	2.000	4.350	0.250	2.475	5.383		
Window										-3.000	1.000	0.450	0.250	0.600	-0.203		
Door										-1.000	1.000	2.050	0.250	2.100	-1.076		
															8.420		
<p>16 Brick work with 1st class bricks in cement mortar (1:6) (a) In foundation and plinth Rate Analysis Enclosed</p>										1.000	2.000	4.350	0.250	0.600	1.305		
above Tie Beam										1.000	3.000	2.850	0.250	0.600	1.283		
water reservoir										1.000	1.000	5.980	0.250	1.200	1.794		
															4.382		
<p>17 Labour for Chipping of concrete surface before taking up Plastering work [PWD BUILDING WORKS, Page- 192, It. No- 1 ]</p>										4.000	4.000	0.250		3.350	13.400		
Column										3.000	2.000	2.325		0.150	2.093		
Lintel										2.000	2.000	4.350		0.150	2.610		
Partition wall										1.000	2.000	1.600		0.150	0.480		
										1.000	2.000	1.200		0.150	0.360		
										1.000	2.000	1.000		0.150	0.300		
Below opening																	
Window										3.000	1.000	0.450		0.250	0.338		
Door										2.000	1.000	1.050		0.250	0.525		
										2.000	1.000	0.750		0.125	0.188		
Chazza										3.000	1.000	1.400		0.100	0.420		
Roof beam										4.000	1.000	4.850		0.275	5.335		
										6.000	1.000	2.825		0.175	2.966		
In side										2.000	2.000	4.350		0.125	2.175		
Inside										2.000	1.000	2.325		0.125	0.581		
Roof										1.000	1.000	4.350		2.825	12.289		
															44.060		
<p>18 Plaster (to wall, floor, ceiling etc.) with sand and cement mortar including rounding off or channfering corners as directed and raking out joints including throating, nosing and drip course, scaffolding/staging where necessary (Ground floor) [Excluding cost of chipping over concrete surface] (i) With 1:6 cement mortar (c) 15 mm thick plaster Rate Analysis Enclosed</p>															44.060		
															21.600		
															Sq.M		925.26

	Outside	1.000	2.000	4.850		3.900	37.830					
		1.000	2.000	2.825		3.900	22.035					
	Chazza	3.000	1.000	0.450	0.500		0.675					
		3.000	1.000	1.400		0.100	0.420					
	Inside	4.000	1.000	2.325		3.900	36.270					
		2.000	1.000	4.850		3.900	37.830					
	Partion wall	1.000	1.000	1.725		2.875	4.959					
		1.000	1.000	1.200		2.875	3.450					
		1.000	1.000	1.000		2.875	2.875					
	Parapet wall	1.000	2.000	4.730	0.125		1.183					
		1.000	2.000	2.700	0.125		0.675					
	Inside	1.000	2.000	4.350		0.300	2.610					
		1.000	2.000	4.325		0.300	2.595					
	Deduction	-2.000	2.000	1.050		2.100	-8.820					
		-2.000	2.000	0.750		2.100	-6.300					
		-3.000	2.000	0.450		0.600	-1.620					
	Water Reservoir	1.00	1.00	3.90		1.200	4.680					
							141.347					
							141.347					
							139.48					
							Sq.M					
							19715.08					
19	Plaster (to wall, floor, ceiling etc.) with sand and cement mortar including rounding off or chamfering corners as directed and raking out joints including throating, nosing and drip course, scaffolding/staging where necessary (Ground floor) [Excluding cost of chipping over concrete surface]											
	(i) With 1:4 cement mortar											
	(c) 10 mm thick plaster											
	Rate Analysis Enclosed											
	Chazza	3.00	1.00	0.45		0.500	0.675					
	Roof	1.00	1.00	4.35		2.325	10.114					
							10.789					
							10.789					
							124.48					
							Sq.M					
							1343.01					
20	Neat cement punning about 1.5mm thick in wall, dado, window sill, floor etc.											
	NOTE:Cement 0.152 cu m per100 sq.m											
	Rate Analysis Enclosed											
	GL to PL	1.00	1.00	15.35		0.60	9.210					
	Water Reservoir	1.00	1.00	3.90		1.20	4.680					
							13.890					
							13.890					
							32.72					
							Sq.M					
							454.48					
21	Supplying, fitting and fixing fibre reinforced polymer (FRP) Composite door frame as per approved section with glass fibre reinforced plastic moulded skins and a special sand wich core, so as to impart monolithic composite structure as per approved technology of Department of Science and Technology (DST) to satisfy IS: 4020 door testing performance criteria.											
	(i) 66mm x 90mm											
	[PWD BUILDING WORKS, Page- 115, It. No- 3.1]											
		1.00	2.00	4.95			9.900					
							9.900					
							497.00					
							Mtr.					
							4920.30					
22	Supplying, fitting & fixing fibre reinforced polymer (FRP) Composite door shutters as per approved design with glass fibre reinforced plastic moulded skins and a special sandwich core, so as to impart monolithic composite structure as per approved technology of Department of Science and Technology (DST) to satisfy IS:4020 door testing performance criteria.											
	In ground floor											
	(ii) 32 mm thick											
	[PWD BUILDING WORKS, Page- 125, It. No- 14.1]											
		1.00	2.00	0.75		2.10	3.150					
							3.150					
							2763.00					
							Sq.M					
							8703.45					
23	Anodised aluminium barrel / tower / socket bolt (full covered) of approved manufactured from extruded section conforming to I.S. 204/74 fitted and fixed with cadmium plated screws.											
	(vii) 22.5mm long x 10mm dia bolt											
	[PWD BUILDING WORKS, Page- 144, It. No- 26.vii]											
		1.00	2.00	0.75		2.10	3.150					
							3.150					
							2763.00					
							Each					
							168.00					







	Supplying and Planting of different plant / trees (Supplying well grown plants bushy and healthy, minimum height as specified i.e. exposed height including all leads & 1ft, carriage, handling, manuring, applying pesticide and fertilizer etc. 1) Furcaria variegated 10-12 leaves in height 20-30cm in earthen pots of size 25cm [PWD BUILDING WORKS, Page- 261, It. No- 9 i]		7.000	162.00	Each	<del>1134.00</del>
43	x) Ficus blakii (F. Vivicon) well branched (Bushy) of height 120cm - 135 cm in earthen pot of size 30cm. [PWD BUILDING WORKS, Page- 261, It. No- 9 x]		3.000	187.00	Each	<del>561.00</del>
44	xxvi) Areca Palm 4 - 5 suckers of height 90 cm to 105 cm in earthen pots of size 25 cm. [PWD BUILDING WORKS, Page- 262, It. No- 9, xxvii]		3.000	127.00	Each	<del>381.00</del>
<b>SANITARY AND PLUMBING WORKS</b>						
45	Supplying, fitting and fixing Anglo-Indian W.C. in white glazed vitreous china ware of approved make complete in position with necessary bolts, nuts etc. (a) With 'P' trap (with vent) [SANITARY AND DRAINAGE WORKS, Page- 79, It. No- 3. a]		2.000	3104.00	Each	<del>6208.00</del>
46	Supplying, fitting and fixing Closet seat of approved make with lid and C.P. hinges, rubber buffer and brass screws complete. (b) Anglo Indian (i) Plastic (hallow type) black AND DRAINAGE WORKS, Page- 81, It. No- 10. b.i]	[SANITARY	2.000	371.00	Each	<del>742.00</del>
47	Supplying, fitting and fixing Flat back urinal (half stall urinal) in white vitreous chinaware of approved make in position with brass screws on 75 mm X 75 mm X 75 mm wooden blocks complete. (i) 635 mm X 395 mm X 420 mm [SANITARY AND DRAINAGE WORKS, Page- 80, It. No- 6. i]		2.000	2869.00	Each	<del>5738.00</del>
48	Supplying, fitting and fixing Squating plate with Integral Flushing in white vitreous chinaware of approved make in cement concrete (6:3:1) with Jhama chips complete. (Payment of concrete will be paid separately). (i) 450 mm X 350 mm [SANITARY AND DRAINAGE WORKS, Page- 80, It. No- 7. i]		1.000	881.00	Each	<del>881.00</del>
49	Supplying, fitting and fixing 10 litre porcelain low-down cistern of approvedmakewitheither sideor bottominlet, sideoverflow, brackets complete with all internal PVC fittings. White [SANITARY AND DRAINAGE WORKS, Page- 36, It. No- 11]		2.000	2297.00	Each	<del>4594.00</del>
50	Supplying, fitting and fixing 32 mm dia. Flush Pipe of approved make with necessary fixing materials and clamps complete. i) Polythene Flush Pipe [SANITARY AND DRAINAGE WORKS, Page- 81, It. No- 11. i]		2.000	155.00	Each	<del>310.00</del>
51	Supplying, fitting and fixing urinal flush pipe fittings of approved brand. (a) C.P. urinal flush pipe fittings range of one [SANITARY AND DRAINAGE WORKS, Page- 81, It. No- 12.a]		3.000	414.00	Each	<del>1242.00</del>
52	Supplying, fitting and fixing white vitreous china best quality approved make wash basin with C.I. brackets on 75 mm X 75 mm wooden blocks. C.P. waste fittings of 32 mm dia., one approved quality brass C.P. pillar cock of 15 mm dia., C.P. chain with rubber plug of 30 mm dia., approved quality P.V.C. waste pipe with C.P. nut 32 mm dia., 900 mm long approved quality P.V.C. connection pipe with heavy brass C.P. nut including mending good all damages and painting the brackets with two coats of approved paint. (ii) 550 mm X 400 mm size [SANITARY AND DRAINAGE WORKS, Page- 41, It. No- 2. ii]		2.000	2208.00	Each	<del>4416.00</del>
53	Supplying, fitting and fixing pedestal of approved make for wash basin (white) [SANITARY AND DRAINAGE WORKS, Page- 41, It. No- 3]		2.000	1497.00	Each	<del>2994.00</del>
54	Supplying, fitting and fixing approved brand P.V.C. CONNECTOR white flexible, with both ends coupling with heavy brass C.P. nut, 15 mm dia. (iii) 600 mm long [SANITARY AND DRAINAGE WORKS, Page- 43, It. No- 9. iii]		5.000	107.00	Each	<del>535.00</del>
55	Supplying, fitting and fixing approved brand 32 mm dia. P.V.C. waste pipe, with PVC coupling at one end fitted with necessary clamps. (iv) 1050 mm long [SANITARY AND DRAINAGE WORKS, Page- 43, It. No- 10. iv]		4.000	91.00	Each	<del>364.00</del>
56	Supplying, fitting and fixing shower of approved brand and make. (f) Hand Shower (Health Faucet) with 1mt Flexible Tube with Wall Hook(Equivalent to Code No.573 & Model -ALLIED of Jaquar or similar) [SANITARY AND DRAINAGE WORKS, Page- 3, It. No- 3 f]		2.000	1251.00	Each	<del>2502.00</del>

	(A) Chromium plated Bibb Cock long body with wall flange with acrotor (Equivalent to Code No. 512 & Model - Tropical / Sunthing Special of ESSCO or similar brand) [SANITARY AND DRAINAGE WORKS, Page- 6, It. No- 7, a.ii]	3.000	659.00	Each	1972.00
58	(b) (i) Chromium plated Stop Cock (Equivalent to Code No. 513(A) & 513(B) & Model - Tropical / Sunthing Special of ESSCO or similar [SANITARY AND DRAINAGE WORKS, Page- 6, It. No- 7, b.i]	1.000	493.00	Each	493.00
59	(d) (i) Chromium plated angular Stop Cock with wall flange (Equivalent to Code No. 5053 & Model - Florentine of Jaquar or similar brand) [SANITARY AND DRAINAGE WORKS, Page- 6, It. No- 7, d.i]	5.000	815.00	Each	4075.00
60	Supplying, fitting and fixing pillar cock of approved make. a) (i) CP Pillar Cock - 15 mm. (Equivalent to Code No. 507 & Model - Tropical / Sunthing Special of ESSCO or similar brand)	2.000	555.00	Each	1110.00
61	Supplying, fitting and fixing GI pipes of TATA make with all necessary accessories, specials viz socket, bend, tee, union, cross, elbo, nipple long screw, reducing socket, reducing tee, short piece etc. fitted with holder bats clamps, including cutting pipes, making threads, fitting, fixin etc. complete in all respect including fittings as required, jointing materials and two coats of painting with approved paint many position above ground (Payment will be made on the centre line measurements of total pipe line including all specials. No separate payment will be made for accessories, specials. Payment for painting will be made separately) (a) For Exposed Work, (i) 32 mm dia. medium quality [SANITARY AND DRAINAGE WORKS, Page- 6, It. No- 7, a.i]	15.000	355.00	Mtr.	5325.00
62	Supplying, fitting and fixing PVC pipes of approved make of Schedule 80 (medium duty) conforming to ASTM D-1785 and thread to match with GI Pipes as per IS : 1239 (Part-1). with all necessary accessories, specials viz socket, bend, tee, union, cross, elbo, nipple, long screw, reducing socket, reducing tee, short piece etc. fitted with holder bats clamps, including cutting pipes, making threads, fitting, fixing etc. complete in all respect including cost of all necessary fittings are required, jointing materials and two coats of painting with approved paint many position above ground. (Payment will be made on the centre line measurements of total pipe line including all specials. No separate payment will be made for accessories, specials. Payment for painting will be made separately.) a) For Exposed Work PVC Pipes (Dia) 25 mm Dia [SANITARY AND DRAINAGE WORKS, Page- 12, It. No- 19, i.a]	10.000	177.00	Mtr.	1770.00
63	Supplying, fitting and fixing gunmetal wheel valve of approved brand and make tested to 21 kg per sq. cm. (for water lines only). (vii) 25 mm dia [SANITARY AND DRAINAGE WORKS, Page- 5, It. No- 5, vii]	2.000	778.00	Each	1556.00
64	Supplying P V C water storage tank of approved quality with closed top with lid (Black) - Multilayer (b) 1000 litre capacity [SANITARY AND DRAINAGE WORKS, Page- 37, It. No- 6, b]	1.000	5128.00	Each	5128.00
65	Labour for hoisting plastic water storage tank. (i) Up to 1500 litre capacity. [SANITARY AND DRAINAGE WORKS, Page- 37, It. No- 10, i]	1.000	96.00	Each	96.00
66	Labour for punching hole in plastic water storage tank upto 50 mm dia. [SANITARY AND DRAINAGE WORKS, Page- 38, It. No- 13]	2.000	19.00	Each	38.00
67	Supply of UPVC pipes (B Type) & fittings conforming to IS-13592-1992 (A) (i) Single Socketed 3 Meter Length, (b) 110 mm PWD S&P Schedule, Page No-68 Item No. 23,(A)(b)	30.000	292.00	Mtr	8760.00
	(B) Fittings (i) Coupler, (b) 110 mm	8.000	85.00	Each	680.00
	(ii) Plain Tee, (b) 110 mm	12.000	85.00	Each	1020.00
	(iii) Door Tee, (b) 110 mm	10.000	195.00	Each	1950.00
	(x) Bend 45°, (b) 110 mm	10.000	89.00	Each	890.00
	(xi) Door Bend (T.S.), (b) 110 mm	7.000	147.00	Each	1029.00
	(xxv) Pipe Clip, (b) 110 mm	30.000	21.00	Each	630.00
	(xxvii) W.C. Connector (150 mm long) 125 X 110 (W/C Ring) 75 mm	4.000	142.00	Each	568.00
	(xxxv) Plain Floor Trap with Top tile & Strainer 75 mm	7.000	144.00	Each	1008.00
	L) Rubber Ring, (b) 110 mm	15.000	17.00	Each	255.00
	C) Rubber Lubricant 500 ML	1.000	187.00	500 ML	187.00
	D) Solvent Cement 250 ML	1.000	103.00	250 ML	103.00

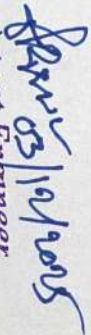
69	<p>labour for fitting and fixing U.P.V.C. pipes for above ground work including cost of jointing materials etc. fitting and fixing all necessary specials, cutting pipes, cutting holes in total pipeline including specials (B) Under ground, (ii) 110 mm dia. PWD S&amp;P Schedule, (P - 74, Item No. -24 (B))</p> <p>Supplying, fitting &amp; fixing UPVC pipes A- Type and fittings conforming to IS-13592-1992 with all necessary clamps nails, including making holes in walls, floor etc. cutting trenches in any soil through masonry concrete structures etc if necessary and mending good damages including jointing with jointing materials (Span Yarn, Valamoid/Bitumen/M-Seal etc) complete.</p> <p>A) UPVC Pipes: (i) 75 mm. Dia. (P - 212, Item No. -21 (A)(i), (B)(c)(i) &amp; (B), (d)(i), Pwd volume- i, 2017)</p> <p>B) UPVC Fittings: c) Bend 87.5 degree (i) 75 mm. Dia.</p>	20 000	84 00	Mtr	1680 00
70	<p>B) UPVC Fittings: d) Shoe (i) 75 mm. Dia.</p>	6 000	188 00	Mtr	3760 00
71	<p>B) UPVC Fittings: d) Shoe (i) 75 mm. Dia.</p>	2 000	95 00	Mtr	570 00
72	<p>Constructing inspection pit of inside measurement 600mm X 600mm X upto 600mm (depth) with 250 mm thick 1st. class brick work in cement mortar (1:4) on all sides, bottom of the pit consisting of 100 mm thick cement concrete (1:3:6) with stone chips over a layer of jhama brick flat soling, 15 mm thick (1:4) cement plaster to inside walls and out-side walls upto G.L. and 20 mm.thick (1:4) plaster to bottom of the pit, providing necessary invert with cement concrete (1:3:6) with stone chips as per direction, neat cement finishing to entire internal surfaces, top of the pit covered with 100 mm thick R.C.C. slab (1:1.5:3) with stone chips and necessary reinforcements upto 1% and shuttering including 6 mm thick cement plaster (1:4) in all external surfaces of the slab and one 560 mm dia. R.C.C. manhole cover of approved make supplied, fitted and fixed in the slab with necessary fittings, necessary earthwork in excavation in all sorts of soil, filling sides of the pit with earth and removing spoils after work complete in all respect with all costs of labour and materials</p> <p>i) With Pakur variety (OTHER MANUFACTURES NOT SPECIFIED)</p> <p>7th CORRIGENDA &amp; ADDENDA, Dated: 22.01.2020, Page 1 of 7, PWD(WB), S.O.R. Volume - II : Sanitary &amp; Plumbing Works w.e.f. 01/11/2017, Item No. - 1, Page No. - 87</p>	2 000	6648 00	Each	13296 00
73	<p>Supplying, fitting and fixing 18 mm thick marble partition slab with chawk doongri marble square cut, both sides polished with two front corners rounded and edges polished.</p> <p>PWD(WB), S.O.R. Volume - II : Sanitary &amp; Plumbing Works w.e.f 01/11/2017, Item No. - 13, Page No.- 81</p>	0 930	1426 00	Sq.m	1326 18
74	<p>Construction of septic tank of different capacities as per approved drawing with 1st class brick work in cement mortar (1:4) including two 560 mm dia. R.C.C. manhole cover(heavy type)of approved make supplied, fitted and fixed in the 100mm thick R.C.C (1:1.5:3) top slab with necessary fittings, 20mm thick cement plaster (4 : 1) with neat cement finish to the internal surfaces and 15 mm thick cement plaster (4 : 1) to outside wall upto 200 mm below G.L. floor finished with 25 mm thick grey artificial stone over 100 mm thick R.C.C(1:1.5:3) bottom slab including supplying, fitting and fixing all necessary specials, fittings, S.W. tees, C.I. foot rest etc. including excavation earth in all sorts of soil, shoring, bailing out and pumping out water as necessary, ramming, dressing the bed and refilling the sides of the tanks with earth, removing spoils, filling up the chamber with clear water, removing foreign materials from the chamber and including constructing attached inspection pit as per approved drawing and connecting all necessary pipes, joints etc. with internal plaster work and artificial stone flooring is to be done with admixture of water proofing compound @ 0.5% by weight of cement with all costs of labour and materials.</p> <p>Note :- (i) Finished level of Septic Tank should be 400 mm. from Ground Level. (ii) Height of 50 mm Ventilation pipe &amp; Mosquito proof mesh, should be followed as per IS:2470,Part-1, Payment will be made separately on the basis of actual height based on relevant I.S Code 7th CORRIGENDA &amp; ADDENDA, Dated: 22.01.2020, Page 3 of 7, PWD(WB), S.O.R. Volume - II : Sanitary &amp; Plumbing Works w.e.f. 01/11/2017, Item No. - 3, Page No. - 88 (ii) For 20 users i) With Pakur variety (OTHER MANUFACTURES NOT SPECIFIED)</p>	1 000	45343 00	Each	45343 00
75	<p>Construction of circular soak well 2.5 metre deep in all types of sandy soils with dry brick work upto 1.6 metre from the bottom having 150 mm intermediate cement brick work (1:4) band all round and cement brick work (1:4) upto 0.90 metre from top with 20mm thick cement plastering (1:4) to inside face upto the depth of cement brick work, 15mm thick cement plaster (1:4) on outer face from top of the well upto G.L. and 6 mm thick cement plaster (1:4) on top of the R.C.C. cover slab including filling bottom 1.00 metre of inside of the well with brick metal (50 mm to 63 mm size) including R.C.C. cover slab of 100 mm thick with cement cone (1:1.5:3) with stone chips with necessary reinforcement and shuttering including one 560 mm dia. R.C.C. manhole cover (heavy type)of approved make supplied, fitted and fixed in the cover slab with necessary fittings, making necessary arrangements for pipe connections, excavation of well including shoring, dewatering and removing the excess earth from the premises as per direction complete in all respect with all costs of labour and materials. With 250 mm thick dry brick work and 250 mm thick cement brick work (1:6) and 1.00m inside dia</p> <p>For-OTHER MANUFACTURES NOT SPECIFIED)</p>	1 000	15451 00	Each	15451 00

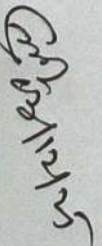
77	supplying, fitting and fixing towel rail with two brackets. (a) C.P. over brass (ii) 25 mm dia. and 600 mm long PWD S&P Schedule, P No 82 1 No- 22 (a)(ii)	2 000	430.00	Each	860.00
	Supplying, fitting and fixing bevelled edged mirror 5.5 mm thick silver red as per I.S. 3438 / 1965 together with brass C.P. hinges (ii) 600 mm X 450 mm PWD S&P Schedule, P-81, It-15(ii)	2 000	484.00	Each	968.00
78	Supplying, fitting and fixing soap holder: (b) Fibre glass Sanitary and plumbing work schedule P-82, It-18(b)	2 000	58.00	Each	116.00
79	Supplying, fitting and fixing glass shelf with aluminium guard rails (a) Ordinary type with 5 mm sheet glass (i) 450 mm X 125 mm Sanitary and plumbing work schedule P-81, It-16(a)(i)	2 000	341.00	Each	682.00
Total Amount excluding GST					538252.29
Add CGST @ 9%					48442.74
Add SGST @ 9%					48442.74
Total amount including GST					635137.77
Add Labour Welfare Cess. @ 1%					6351.38
Total Amount Including L. labour Welfare Cess.					641489.09
Add Contingency @3%					19054.13
Total Amount Including L.W.C. and contingency					660543.22
Say Rupees					660543.00

*Answer*  
**S A E (C)**  
 English Bazar Municipality  
 MALDA

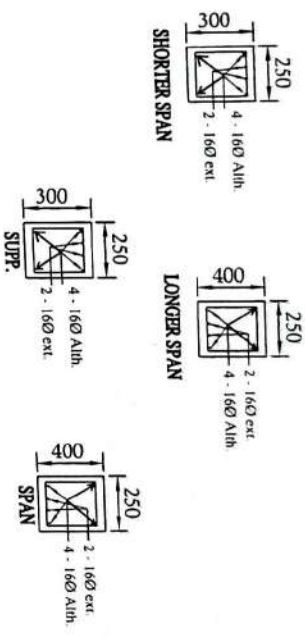
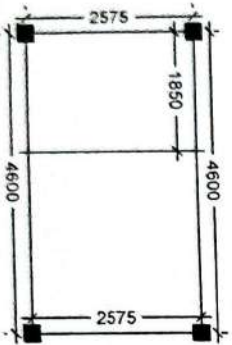
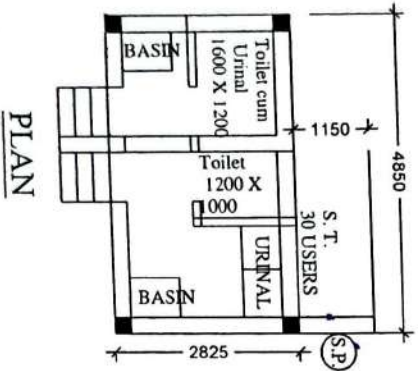
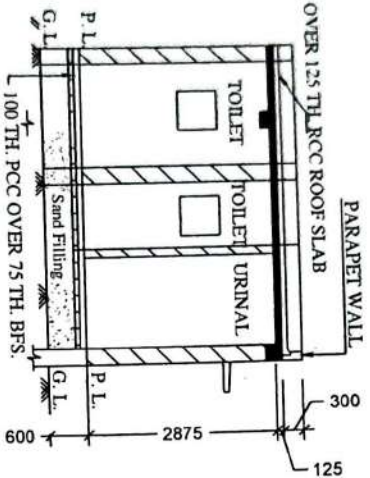
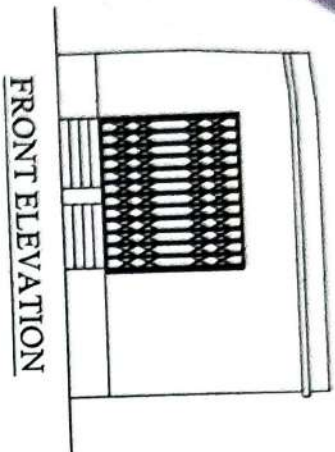
  
**Chairman**  
 English Bazar Municipality  
 MALDA

  
 Junior Engineer  
 Malda Division  
 M. E. Directorate  
 Govt. of West Bengal

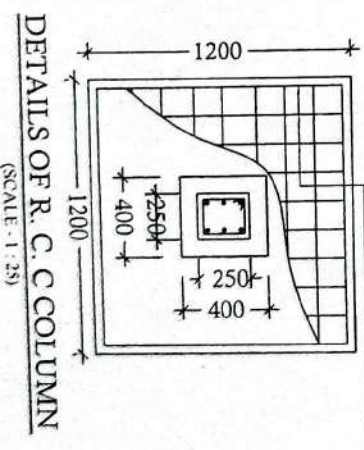
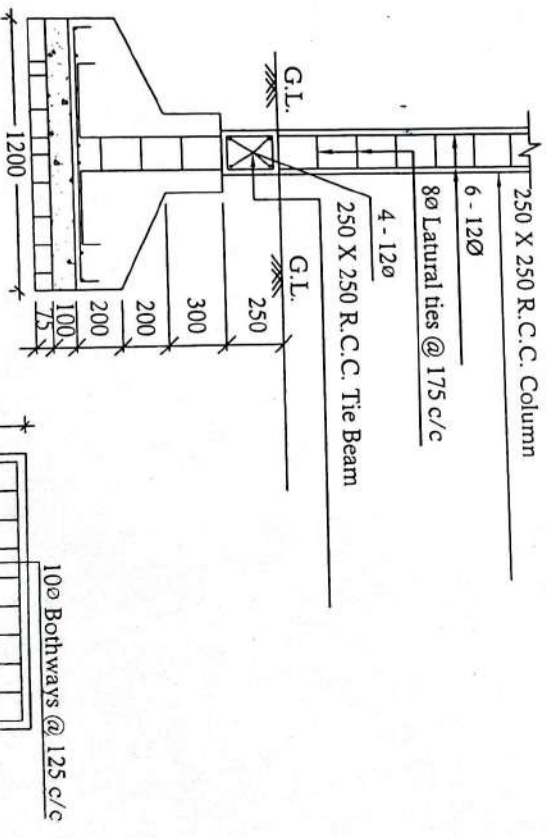
  
 Assistant Engineer  
 Malda Division  
 M.E. Directorate  
 Deptt. Of UD & MA  
 Govt. Of West Bengal

  
 Executive Engineer  
 Malda Division  
 M.E. Directorate  
 Deptt. of UD & MA  
 Govt. of West Bengal

MODEL DRAWING FOR CONSTRUCTION OF C. T./P.T.  
TOILET SEATS 2 NOS URINAL 3 NOS  
MODEL NO. - F



Details of R.C.C. Roof Slab & Beam  
(SCALE - 1 : 25)



*Signature*

*Signature*

*Signature*

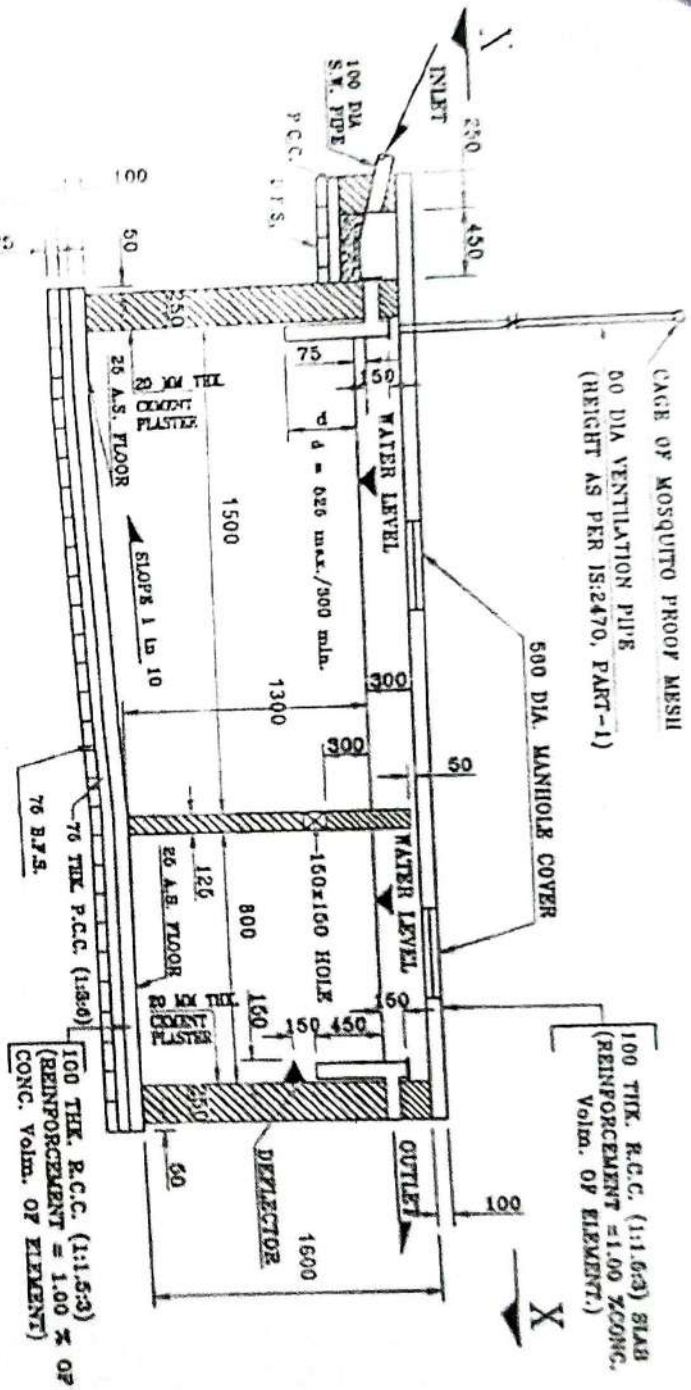
S. A. E. (C)  
English Bazar Municipality  
MALDA

Assistant Engineer  
Malda Division  
M. E. Directorate  
Dept. Of UD & MA  
Govt. Of West Bengal

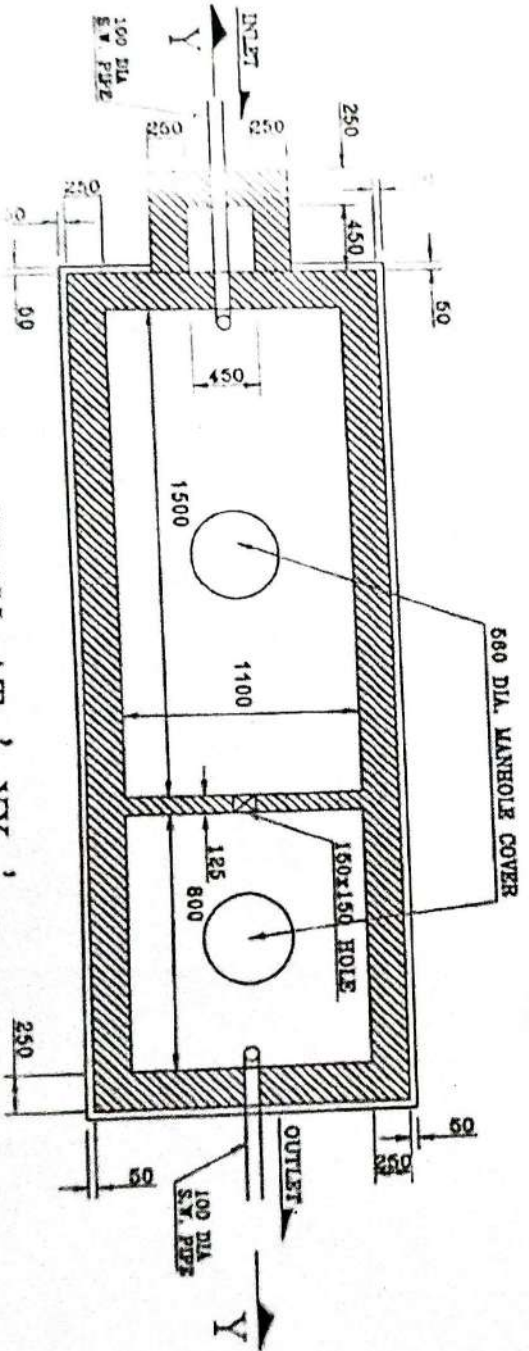
Chairman  
English Bazar Municipality  
MALDA

# 20 USER SEPTIC TANK

SECTION (C) - V :- DRAWING OF SEPTIC TANK



SECTION ON ' YY ' ,



Note: Finished top level of Septic Tank should be 400 mm above Ground Level

*Signature*  
03/10/2025

*Signature*

Assistant Engineer

Malda Division

M.E. Directorate

Dept. Of U.D & MA

English Bazar Municipality

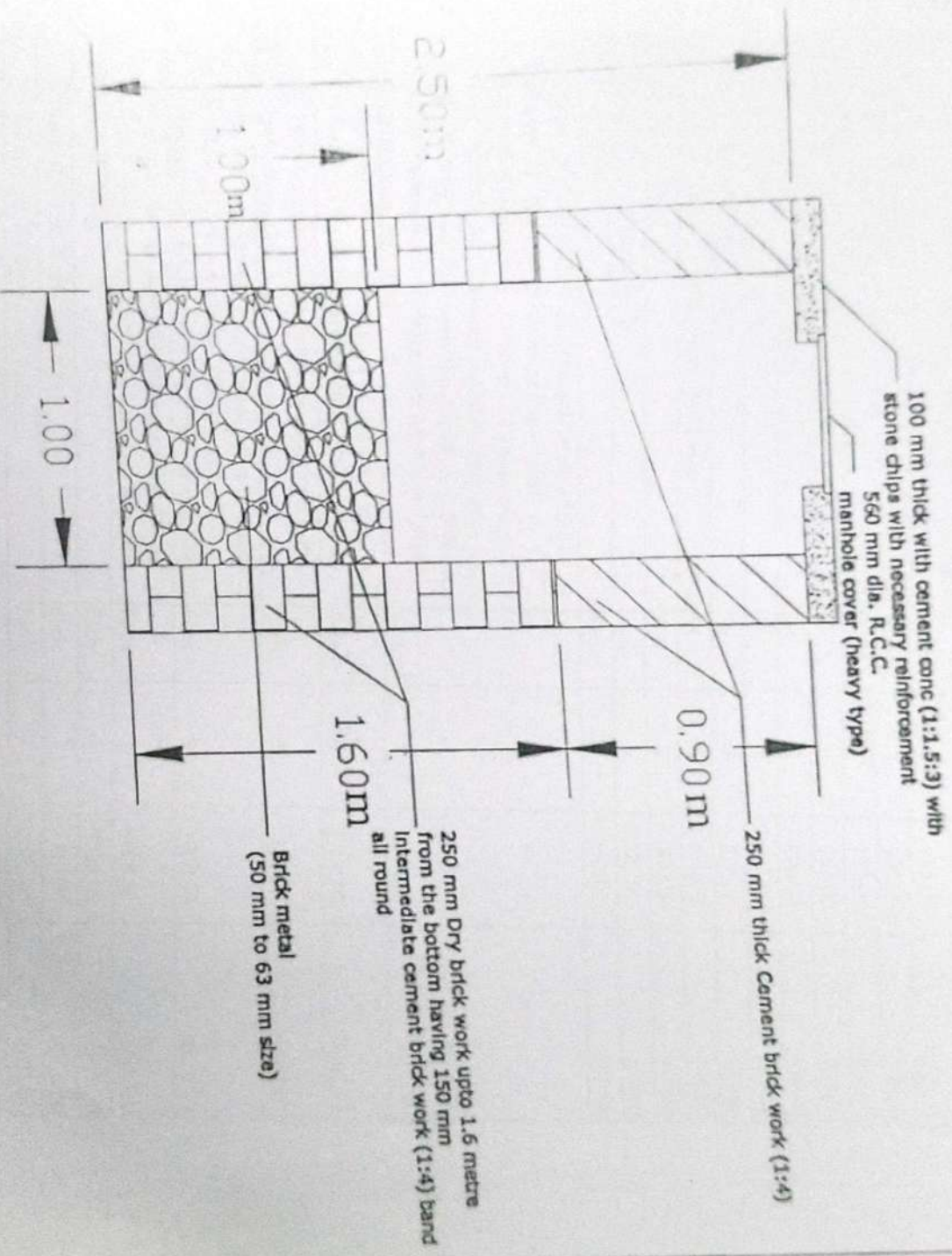
Chairman  
English Bazar Municipality  
MALDA

S.A.E. (C)  
English Bazar Municipality  
MALDA

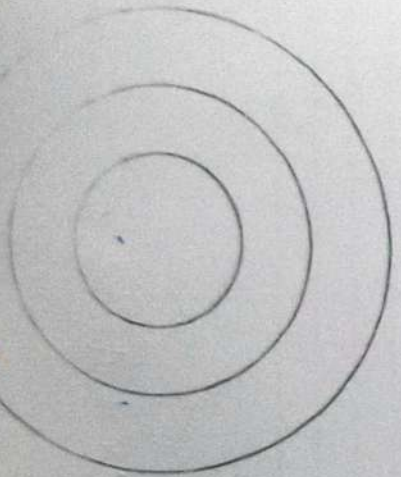
SCALE :- 1 : 60

ALL DIMENSIONS ARE IN MM

# CIRCULAR SOAK WELL



Note:- 20mm thick cement plastering (1:4) to inside brick upto the depth of cement brick work, 15mm thick cement plaster work, 15mm thick cement plaster (1:4) on outer face from top of the well upto G.L. and 6 mm thick cement plaster (1:4) on top of the R.C.C. cover slab.



S. A. E. (C)  
English Bazar Municipality  
MALDA

Assistant Engineer  
Malda Division  
M. E. Directorate  
Dypl. Of UD & MA  
Govt. Of West Bengal

Chairman  
English Bazar Municipality  
MALDA