

ESTIMATE FORM
ENGLISHBAZAR MUNICIPALITY, MALDA

Estimate of Civil Works for Construction of Public Toilet Block in front of shop of Mahabir Hardware at Bhabani more in ward no-27 Under Englishbazar Municipality, Malda (W.B). (MODEL NO -G)

Sl. No.	Item Description & Item No.							Quantity	Rate	Unit	Amount(Rs.)
	Details	Count	Nos.	L	B	H	QNTY.				
1	Earth work in excavation of foundation trenches or drains, in all sorts of soil (including mixed soil but excluding laterite or sandstone) including removing, spreading or stacking the spoils within a lead of 75 m. as directed. The item includes necessary trimming the sides of trenches, levelling, dressing and ramming the bottom, bailing out water as required complete. (a) Depth of excavation not exceeding 1,500 mm. PWD Building Works schedule Page - 1, Item -2.a							18.833	11927.00	%Cum	2246.21
	Column	6	1	1.200	1.200	1.125	9.720				
	Main Tie Beam	2	1	4.850	0.250	0.425	1.031				
		3	1	4.300	0.250	0.475	1.532				
	Part Tie Beam	1	1	7.250	0.250	0.425	0.770				
	Reservior (1.2X1.5X1.5)	1	1	1.835	2.100	1.500	5.780				
							18.833				
	(b) Depth of excavation for additional depth beyond 1,500 mm. and upto 3,000 mm. but not requiring shoring.										
		1	1	1.835	2.100	0.176	0.678	0.678	19238.00	% Cum	130.43
2	Single Brick Flat Soling of picked jhama bricks including ramming and dressing bed to proper level and filling joints with local sand. 3rdCORRIGENDA&ADDENDA,Dated:04.06.2018,Page1of 96, PWD(WB), S.O.R. Volume- I : BuildingWorksw.e.f. 01/11/2017 Item No -1 Page No - 14							41.575	322.00	Sqm	13387.15
	Column	6	1	1.200	1.200		8.640				
	Main Tie Beam	2	1	4.850	0.250		2.425				
		3	1	4.300	0.250		3.225				
	Part Tie Beam	1	1	7.250	0.250		1.813				
	Floor	1	1	4.350	4.050		17.618				
	Ramp	1	1	4.000	1.000		4.000				
Reservior	1	1	1.835	2.100		3.854					
						41.575					
3	Ordinary Cement concrete (mix 1:2:4) with graded stone chips (20 mm nominal size) excluding shuttering and reinforcement,if any, in ground floor as per relevant IS codes. Rate Analysis Enclosed							3.509	4521.93	Cum	15867.45
	Column	6	1	1.200	1.200	0.100	0.864				
	Main Tie Beam	2	1	4.850	0.250	0.050	0.121				
		3	1	4.300	0.250	0.050	0.161				
	Part Tie Beam	1	1	7.250	0.250	0.050	0.091				
	Floor	1	1	4.350	4.050	0.075	1.321				
	Ramp	1	1	4.000	1.000	0.075	0.300				
Plinth Protection	2	1	5.100	0.450	0.075	0.344					
	2	1	4.550	0.450	0.075	0.307					
						3.509					
4	25 mm. thick damp proof with cement concrete (1:1.5:3) (with graded stone aggregate 10 mm. normal size) and painting the top surface with a coat of bitumen [VG.40] using 1.7 kg. per sq.m. including heating the bitumen and cost and carriage of all materials complete. [Bitument to be supplied by the Agency] 3rd CORRIGENDA & ADDENDA, Dated: 04.06.2018, Page 22 of 96, PWD(WB), S.O.R. Volume - I : Building Works w.e.f. 01/11/2017, Item No.-2, Page No. - 47										
		2	1	4.850	0.250		2.425				
		3	1	4.300	0.250		3.225				

Item Description & Item No.							Quantity	Rate	Unit	Amount(Rs.)	
	1	1	7.250	0.125		0.906					
						6.556	6.556	245.01	Sqm	1606.29	
5	Brick work with 1st class bricks in cement mortar (1:6) (a) In foundation and plinth Rate Analysis Enclosed										
	1	1	22.600	0.250	0.600	3.390	6.560	4872.88	Cum	31966.09	
	GL 2 PL										
	Ramp	1	6.000	0.250	0.300	0.450					
	Water Reservoir	1	6.400	0.250	1.700	2.720					
						6.560					
6	Brick work with 1st class bricks in cement mortar (1:6) (b) In superstructure, ground floor Rate Analysis Enclosed										
	Outer Wall	2	4.350	0.250	2.700	5.873	12.020	5095.88	Cum	61252.48	
		3	4.050	0.250	2.600	7.898					
	Less Door	1	2.050	0.250	2.100	-1.076					
	Less V	10	0.600	0.250	0.450	-0.675					
						12.020					
7	125 mm. thick brick work with 1st class bricks in cement mortar (1:4) in ground floor. Rate Analysis Enclosed										
	Wall	1	7.250		2.725	19.756	22.996	668.33	Sqm	15368.92	
	Less Door	3	0.750		1.950	-4.388					
	Parapet	1	21.700		0.300	6.510					
	Below urinal	1	3.725		0.300	1.118					
						22.996					
8	Earth work in filling in foundation trenches or plinth with good earth, in layers not exceeding 150 mm. including watering and ramming etc. layer by layer complete. (Payment to be made on the basis of measurement of finished quantity of work). (a) With earth obtained from excavation of foundation. PWD Building Works schedule, Page - 1, Item -3.a										
	2/3rd of Earth work	1	0.66	18.83		12.430	12.430	7754.00	%Cum	963.82	
9	(A) Filling in foundation or plinth by silver sand in layers not exceeding 150 mm as directed and consolidating the same by thorough saturation with water, ramming complete including the cost of supply of sand. (payment to be made on measurement of finished quantity) PWD(WB), S.O.R. Volume- I : Building Works w.e.f. 01/11/2017, Item No.-4(A), Page No. - 2										
	GL to PL	1	4.350	4.050	0.600	10.571	11.471	43131.00	%Cum	4947.56	
	Ramp	1	4.000	1.000	0.225	0.900					
						11.471					
10	Hire and labour charges for shuttering with centering and necessary staging upto 4 m using approved stout props and thick hard wood planks of approved thickness with required bracing for concrete slabs, beams and columns, lintels curved or straight including fitting, fixing and striking out after completion of works (upto roof of ground floor) shuttering without staging in foundation PWD Building Works schedule. Page -42, Item- 36.f										
	Foundation	6	4.800		0.200	5.760	27.405	205.00	Sqm	5618.03	
	Pedestal	6	1.600		0.300	2.880					
	Main Tie Beam	2	4.850		0.250	4.850					
		3	4.300		0.300	7.740					
	Part Tie Beam	1	7.250		0.250	3.625					
	Ramp	1	6.000		0.125	0.750					
	Water Reservoir Slab	1	1.200	1.500		1.800					
						27.405					

Item Description & Item No.							Quantity	Rate	Unit	Amount(Rs.)
11	Hire and labour charges for shuttering with centering and necessary staging upto 4 m using approved stout props and thick hard wood planks of approved thickness with required bracing for concrete slabs, beams and columns, lintels curved or straight including fitting, fixing and striking out after completion of works (upto roof of ground floor) (When the height of a particular floor is more than 4 m the equivalent floor height shall be taken as 4 m and extra for works beyond the initial 4 m ht. shall be allowed under 12 (e) for every 4 m or part thereof) (c) Steel shuttering or 9 to 12 mm thick approved quality ply board shuttering in any concrete work PWD(WB), S.O.R. Volume- I : Building Works w.e.f.						74.926	363.00	Sqm	27198.14
	Column	6	1	1.000		3.475	20.850			
	Roof Beam	2	2	4.600		0.175	3.220			
		3	2	4.050		0.275	6.683			
	Lintel	1	2	23.850		0.150	7.155			
		1	2	7.000		0.150	2.100			
	Chajja	10	1	0.450	0.300		1.350			
	slab bottom with outer extension(0.15 m each side	1	1	5.700	5.150		29.355			
	Slab Side	1	1	21.700		0.125	2.713			
	Water Reservoir Slab	1	1	1.000	1.500		1.500			
							74.926			
12	Ordinary Cement concrete (mix 1:1.5:3) with graded stone chips (20 mm nominal size) excluding shuttering and reinforcement if any, in ground floor as per relevant IS codes. (i) Pakur Variety [PWD BUILDING WORKS, Page- 26, It. No- 10. i] Rate Analysis Enclosed						13.208	5052.35	Cum	66731.44
	Column foot	6	1	1.200	1.200	0.200	1.728			
		6	1	0.800	0.800	0.200	0.768			
	$6*0.15/3*(1*1+0.3*0.3+1*0.3)=0.417$									
	Pedestal	6	1	0.400	0.400	0.300	0.288			
	Column	6	1	0.250	0.250	3.475	1.303			
	Main Tie Beam	2	1	5.100	0.250	0.250	0.638			
		3	1	4.550	0.250	0.300	1.024			
	Part Tie Beam	1	1	7.250	0.250	0.250	0.453			
	Lintel	1	1	23.850	0.250	0.150	0.894			
		1	1	7.000	0.125	0.150	0.131			
	Chajja	10	1	0.450	0.300	0.075	0.101			
	Slab Beam	2	1	4.350	0.250	0.175	0.381			
		3	1	4.050	0.250	0.275	0.835			
	Slab	1	1	5.700	5.050	0.125	3.598			
	Wash Basin	1	2	2.400	0.600	0.075	0.216			
	Water Reservoir Bed	1	1	1.700	2.000	0.125	0.425			
	Water Reservoir Slab	1	1	1.700	2.000	0.125	0.425			
							13.208			
13	Reinforcement for reinforced concrete work in all sorts of structures including distribution bars, stirrups, binders etc initial straightening and removal of loose rust (if necessary), cutting to requisite length, hooking and bending to correct shape, placing in proper position and binding with 16 gauge black annealed wire at every intersection, complete as per drawing and direction. 10th CORRIGENDA & ADDENDA, Dated: 22.01.2020, Page - 1 of 6, PWD(WB), S.O.R. Volume - I : Building Works w.e.f. 01/11/2017, Item No.-40, Page No. - 43 (a) For works in foundation and upto roof of ground floor/upto 4 m III. OTHER MANUFACTURERS NOT SPECIFIED						1.244	58229.74	M.T.	72437.80

Item Description & Item No.							Quantity	Rate	Unit	Amount(Rs.)					
13.208 0.012 7.85 1.244															
14	Artificial stone in floor, dado, staircase etc with cement concrete (1:2:4) with stone chips, laid in panels as directed with topping made with ordinary or white cement (as necessary) and marble dust in proportion (1:2) including smooth finishing and rounding off corners including raking out joints or roughening of concrete surface and application of cement slurry before flooring works using cement @ 1.75 kg/sq.m all complete including all materials and labour. In ground floor. 3 mm. thick topping (High polishing grinding on this item is not permitted with ordinary cement). Using grey cement (ii) 25 mm. thick 3rdCORRIGENDA&ADDENDA,Dated:04.06.2018,Page22 of96,PWD(WB), S.O.R.Volume- I :BuildingWorksw.e.f. 01/11/2017, Item No.-6, Page No. - 48						28.79	243.83	Sqm	7018.65					
Roof							1	1	5.700	5.050	28.785				
15	Neat cement punning about 1.5mm thick in wall, dado, window sill, floor etc. NOTE:Cement 0.152 cu.m per100 sq.m. Building Works schedule, P-192, It. No. 15 (Rate Analysis) PWD						20.76	32.72	Sqm	679.27					
Below Plinth							1.000	1.000	19.300	0.600	11.580				
Water reservior							1.000	1.000	5.400	1.700	9.180				
											20.760				
16	Labour for Chipping of concrete surface before taking up Plastering work. Works schedule, P-192, It-1 PWD Building						74.93	21.00	Sqm	1573.45					
Same as shuttering sl no. 12										74.93					
17	Plaster (to wall, floor, ceiling etc.) with sand and cement mortar including rounding off or chamfering corners as directed and raking out joints including throating, nosing and drip course, scaffolding/staging where necessary (Ground floor).[Excluding cost of chipping over concrete surface] (i) With 1:6 cement mortar (c) 15 mm thick plaster [PWD BUILDING WORKS, Page- 189, It. No- 1.] Rate Analysis Enclosed						216.61	139.48	Sqm	30213.18					
Length wise side outer											2	1	5.100	3.900	39.780
Breadth wise side outer											2	1	4.550	3.900	35.490
Chajja											10	2	0.450	0.300	2.700
Chajja Side											10	1	1.050	0.075	0.788
Iner Wall 250 mm th.											4	1	4.550	2.875	52.325
Iner Wall 250 mm th.											2	1	5.100	2.875	29.325
Iner Wall 125 mm th.											6	1	1.200	2.875	20.700
											2	1	2.500	2.875	14.375
											1	1	1.600	2.875	4.600
Less Door											4	-1	0.750	2.100	-6.300
Less Collapsible											1	-1	2.050	2.100	-4.305
Less Ventilators											10	-1	0.450	0.300	-1.350
Parapet wall											1	1	19.800	0.975	19.305
Water Reservior							1	1	5.400	1.700	9.180				
											216.613				

Item Description & Item No.							Quantity	Rate	Unit	Amount(Rs.)		
Plaster (to wall, floor, ceiling etc.) with sand and cement mortar including rounding off or chamfering corners as directed and raking out joints including throating, nosing and drip course, scaffolding/staging where necessary (Ground floor).[Excluding cost of chipping over concrete surface] (ii) With 1:4 cement mortar (c) 10 mm thick plaster [PWD BUILDING WORKS, Page- 189, It. No- 1.] Rate Analysis Enclosed							23.768	124.48	Sqm	2958.64		
Slab bottom							1	1	4.350	4.050	17.618	
Slab extension							1	1	20.500	0.300	6.150	
											23.768	
Supplying, fitting and fixing fibre reinforced polymer (FRP) Composite door frame as per approved section with glass fibre reinforced plastic moulded skins and a special sandwich core, so as to impart monolitaheic composite structure as per approved technology of Department of Science and Technology (DST) to satisfy IS: 4020 door testing performance criteria.. (i) 66mm x 90mm PWD Building Works schedule, P-115, It - 3 (i)							19.80	497.00	Mtr	9840.60		
							4	1	4.95		19.800	
Supplying, fitting & fixing fibre reinforced polymer (FRP) Composite door shutters as per approved design with glass fibre reinforced plastic moulded skins and a special sandwich core, so as to impart monolitaheic composite structure as per approved technology of Department of Science and Technology (DST) to satisfy IS:4020 door testing performance criteria. In ground floor. (ii) 32 mm thick [PWD BUILDING WORKS, Page- 125, It. No- 14.ii]							6.30	2763.00	Sqm	17406.90		
							4	1	2.100	0.750	6.300	
Anodised aluminium barrel / tower / socket bolt (full covered) of approved manufactured from extruded section conforming to I.S. 204/74 fitted and fixed with cadmium plated screws . (vii) 225mm long x 10mm dia. bolt. PWD Building Works schedule, P-144, It No. 26 (vii)							8.00	84.00	Each	672.00		
							4	1	2.00		8.000	
Iron butt hinges of approved quality fitted and fixed with steel screws, with ISI mark. (viii) 100mm X 75mm X 3.50mm. PWD Building Works schedule, P-140, It No. -5 (viii)							12.00	66.00	Each	792.00		
							4	1	3.00		12.000	
Anodised aluminium decorative handle (hexagonal / fluted) of approed quality fitted and fixed complete. (i) 150mm plate x 10mm dia rod x 12mm hexagonal/fluted. PWD Building Works schedule, Page -146 . Item no-31,(i)							8.00	87.00	Each	696.00		
							4	1	2.00		8.000	
Iron hasp bolt of approved quality fitted and fixed complete (oxidised) with 16mm dia rod with concrete bolt and round fitting. (.b)250mm long. PWD Building Works schedule, Page -141 . Item no-10 b)							4.00	159.00	Each	636.00		
							4	1	1.00		4.000	
(A) Supplying Aluminium casted body hydraulic door closer as per I.S.I. SOR, PWD, P- 244, I - 13(a)							4.00	635.00	Each	2540.00		
							4	1	1.00		4.000	
Rendering the Surface of walls and ceiling with White Cement base WATER PROOF wall putty of approved make & brand.(1.5 mm thick) In Ground Floor PWD Building Works schedule, PWD, P- 198, I - 5												
Iner Wall 250 mm th.							4	1	4.050		0.775	12.555
Iner Wall 250 mm th.							2	1	4.600		0.775	7.130

Item Description & Item No.							Quantity	Rate	Unit	Amount(Rs.)	
Inner Wall 125 mm th.	6	1	1.200		0.775	5.580	46.648	122.00	Sqm	5691.06	
	2	1	2.500		0.775	3.875					
	1	1	1.600		0.775	1.240					
	1	1	4.350	4.050		17.618					
Ceiling											
Less Ventilators	10	-1	0.450		0.300	-1.350					
						46.648					
27	Acrylic Distemper to interior wall, ceiling with a coat of solvent based interior grade acrylic primer (as per manufacturer's specification) including cleaning and smoothing of surface. Two Coats PWD(WB), S.O.R. Volume- I : Building Works w.e.f. 01/11/2017, Item No.-10, Page No. - 196						46.648	70.00	Sqm	3265.36	
	Same as Item - Wall putty						46.648				
28	Applying Exterior grade Acrylic primer of approved quality and brand on plastered or concrete surface old or new surface to receive decorative textured (matt finish) or smooth finish acrylic exterior emulsion paint including scraping and preparing the surface thoroughly, complete as per manufacturer's specification and as per direction of the EIC. In Ground Floor:						77.506	45.10	Sqm	3495.52	
	Length wise side outer	1	1	5.100		3.900					19.890
	Breadth wise side outer	2	1	4.550		3.900					35.490
	Chajja	10	2	0.450		0.300					2.700
	Chajja Side	10	1	1.050		0.075					0.788
	Less Ventilators	10	-1	0.450		0.300					-1.350
	Parapet wall	1	1	20.500		0.975					19.988
											77.506
29	Protective and Decorative Acrylic exterior emulsion paint of approved quality, as per manufacturer's specification and as per direction of Engineer-in-Charge to be applied over acrylic primer as required. The rate includes cost of material, labour, scaffolding and all incidental charges but excluding the cost of primer. In Ground floor (Two Coat) a) Normal Acrylic Emulsion [PWD BUILDING WORKS, Page- 197, It. No- 17.c]						77.506	67.00		5192.90	
	Same as Item No						77.506				
30	Collapsible gate with 40mm x 40mm x 6mm Tee as top and bottom guide rail, 20mm x 10mm x 2mm vertical channels 100mm apart in fully stretched position 20mm x 5mm M.S. flats as collapsible bracings properly rivetted and washered including 38mm steel rollers including locking arrangements, fitted and fixed in position with lugs set in cement concrete and including cutting necessary holes, chasing etc. in walls, floors etc. and making good damages complete. In ground floor. P-106 Item-18 (3rd Corrigendam Page No 92)						4.830	4351.00	Sqm	21015.33	
	Gate	1	1	2.30		2.10	4.830				
31	(a) M.S.or W.I. Ornamental grill of approved design joints continuously welded with M.S, W.I. Flats and bars of windows, railing etc. fitted and fixed with necessary screws and lugs in ground floor.. (i) Grill weighing above 10 Kg./sq.mtr and up to 16 Kg./sq. mtr. PWD Building Works schedule, P-104 Item-13 A (i) (3rd Corrigendam Page No 91)						1.440	10021.00	Qntl	14430.24	
	Grill	10	1	0.600	0.450						2.700
	Box for pump	1	5	0.600	0.600						1.800
	Railing	1	1	5.000	0.900						4.500
											9.000
											@ 16 kg/ sqm. = 144.000
							= 1.440				

Item Description & Item No.

Priming one coat on steel or other metal surface with synthetic oil bound primer of approved quality including smoothening surfaces by sand papering etc.
PWD Building Works schedule, P/200 Item-1(a)

C gate	1.5	1.000	2.300	2.100	7.245
Grill	2	10.000	0.600	0.450	5.400
Box for pump	5	1.000	0.600	0.600	1.800
Railing	2	1.000	5.000	0.900	9.000
					23.445

Quantity	Rate	Unit	Amount(Rs.)
23.445	29.00	Sqm	679.91

33

(A) Painting with best quality synthetic enamel paint of approved make and brand including smoothening surface by sand papering etc. including using of approved putty etc. on the surface, if necessary :
(b) On steel or other metal surface :
(iv) Two coats (with any shade except white)
PWD Building Works schedule, P-200 Item-2(b)(iv)

23.445

23.445	79.00	Sqm	1852.16
--------	-------	-----	---------

34

Same as priming on grill
Supplying and laying true to line and level Anti-Skid, Full Body, Homogeneous & Granular finish Vitrified Tiles conforming to IS:15622-2006 & IS 4457-2007 and testing shall be made in accordance with IS:13630 [Non- modular sizes for tiles with Skid resistance > 0.5, Mohr's hardness > 5.0, Staining resistance: Class-1, Water Absorption: E < 0.5%], MOR > 35 N/sq.mm in Internal area of building e.g. Toilet Block, Passage, Corridor, Accessible Open Terrace etc. set in 20 mm sand cement mortar (1:4) and 2 mm thick cement slurry at back side of tiles using cement @ 2.91 Kg./Sqm or using Polymerised Adhesive (6 mm thick layer applied directly over finished artificial stone floor/ Mosaic etc without any backing course) laid after application slurry using 1.75 Kg of cement per Sqm below mortar only, joints grouted with admixture of white cement and colouring pigment to match with colour of tiles/ epoxy grout materials of approved make as directed and removal of wax coating of top surface of tiles with warm water and polishing the tiles using soft and dry cloth upto mirror finish complete including the cost of materials, labour and all other incidental charges complete true to the manufacturer's specification and direction of Engineer-in-Charge. (White cement, synthetic adhesive and grout material to be supplied by the contractor).
b) In Ground Floor: Sizes-600 mm x600mm x10 mm with breaking strength >1500 N

17.62	1589.00	Sqm	27998.18
-------	---------	-----	----------

3rd CORRIGENDA & ADDENDA, Dated: 04.06.2018, Page 80 of 96, PWD(WB), S.O.R.

Volume - I : Building Works w.e.f. 01/11/2017, Item No.-1, Page No. - 280

floor 1 4.35 4.05 17.620

Supplying, fitting & fixing best quality digital printed Ceramic tiles in coloured decorative on walls and floors to match with the existing work & 4 nos. key stones (10mm) fixed with adhesive 4.5 mm thick at the back of each tile & finishing the joints with white cement mixed with colouring oxide if required to match the colour of tiles including roughening of concrete surface, if necessary or by synthetic adhesive & grout materials etc. With polymerised adhesive and epoxy grout pointing including spacer - 2mm (When tiles are laid over existing hard ready surface) all complete as per direction of Engineer-in-charge.

35

PWD(WB), S.O.R. Volume - I : Building Works w.e.f. 01/11/2017, Item No.-39, Page No. -

68

inside 250 mm wall	2	1	4.35	2.1	18.270
	4	1	4.05	2.1	34.020
	1	-1	2.05	2.1	-4.305
Less C Gate	2	1	1.6	2.1	6.720
on 125 mm wall	2	1	1.1	2.1	4.620
	2	1	1.2	2.1	5.040
	2	1	2.5	2.1	10.500
Less Door	4	-1	0.75	2.1	-6.300

Item Description & Item No.	Quantity	Rate	Unit	Amount(₹.)
36 Supplying & laying 20 mm designer chequered tiles of any shade and of approved quality as per IS: 1237: 1980 laid in patterns as directed in pavement, footpath including necessary underlay 25 mm thick average cement mortar (1:3) complete in all respect with all labour and materials [Using cement slurry @ 4.4 kg/Sq.m at back side of tiles. Cement of mortar & slurry will be supplied by the Department. Border concrete if necessary to be paid separately]. 3rd CORRIGENDA & ADDENDA, Dated: 04.06.2018, Page 37 of 96, PWD(WB), S.O.R. Volume - 1 : Building Works w.e.f. 01/11/2017, Item No.-47, Page No. - 74	4.00	825.00	Sqm	3300.00
37 Ramp Supplying, fitting & fixing granite slabs 15mm to 18 mm. thick with uniform texture & without decorative veins in columns, wall, fascia etc. with 15 mm thick [avg] cement mortar (1:2) including making suitable arrangements to hold the stones properly by brass / copper hooks including pointing in cement mortar (1:2) (1 white cement : 2 marble dust) with admixture of pigment matching the stone shades all complete as per direction of the Engineer-in-charge including cost of all materials, labours, scaffolding, staging, curing and roughening of concrete surface complete. Area of each Granite slab \leq 0.6 square metre. [Using cement slurry at back side of granite @ 4.4 kg/sq.m & white cement slurry for joint filling @ 1.8 kg/sq.m] 3rd CORRIGENDA & ADDENDA, Dated: 04.06.2018, Page 34 of 96, PWD(WB), S.O.R. Volume - 1 : Building Works w.e.f. 01/11/2017, Item No.-32, Page No. - 62)	7.433	2315.00	Sqm	17207.40
	1	4,000	1	4,000
	1	1,650	0.450	0.743
For Wash Basin (Gents)	1	1,800	0.450	0.810
For Wash Basin (Ladies)	1	1,700	2.100	3.570
for front wall	1	1,100	2.100	2.310
				7.433
38 Supplying, fitting and fixing 18 mm thick marble partition slab with chawk doongri marble square cut, both sides polished with two front corners rounded and edges polished. Sanitary and plumbing work schedule P-81, It-13	2.16	1426.00	Sqm	3080.16
	3	1.2	0.6	2.16
39 Supplying bubble free float glass of approved make and brand conforming to IS: 2835-1987. iv) 5mm thick coloured / tinted / smoke glass. P.W.D Building Works schedule - P-243, I-9	0.27	585.00	Sq.M.	157.95
	10	1	0.6	0.270
40 Supplying and Planting of different plant / trees (Supplying well grown plants bushy and healthy, minimum height as specified i.e. exposed height including all leads & lift, carriage, handling, manuring, applying pesticide and fertilizer etc. . i) Furcaria veriegated 10-12 leaves in height 20-30cm in earthen pots of size 25cm. P.W.D Building Works schedule, Page -261, It- 9 (i)	12	162.00	Each	1944.00
41 x) Ficus blakii (F. Vivicon) well branched (Bushy) of height 120cm - 135 cm in earthen pot of size 30cm. P.W.D Building Works schedule, Page -261, It- 9 (x)	9	187.00	Each	1683.00
42 xxvi) Areca Palm 4 - 5 suckers of height 90 cm to 105 cm in earthen pots of size 25 cm. P.W.D Building Works schedule, Page -261, It- 9 (xxvi)	6	127.00	Each	762.00
43 Supplying, fitting and fixing Anglo-Indian W.C. in white glazed vitreous china ware of approved make complete in position with necessary bolts, nuts etc. a) With 'P' trap (with vent) Schedule, page-79, Item no -3 (a)	4	3104.00	Each	12416.00
			P.W.D S&P	

Item Description & Item No.	Quantity	Rate	Unit	Amount(Rs.)
<p>applying, fitting and fixing Closet seat of approved make with lid and C.P. rings, rubber buffer and brass screws complete.</p> <p>(a) Anglo Indian (b) Plastic (hallow type) black</p> <p>[SANITARY AND DRAINAGE WORKS, Page- 81, It. No.- 10. b.1]</p>	4	371.00	Each	1484.00
<p>Supplying, fitting and fixing Flat back urinal (half stall urinal) in white vitreous chinaware of approved make in position with brass screws on 75 mm X 75 mm X 75 mm wooden blocks complete.</p> <p>(i) 635 mm X 395 mm X 420 mm (ii) 635 mm X 395 mm X 420 mm</p> <p>[SANITARY AND DRAINAGE WORKS, Page- 80, It. No- 6. i]</p>	3	2869.00	Each	8607.00
<p>Supplying, fitting and fixing Squating plate with integral flushing in white vitreous chinaware of approved make in cement concrete (6:3:1) with jhama chips complete. (Payment of concrete will be paid seperately).</p> <p>(i) 450 mm X 350 mm (ii) 450 mm X 350 mm</p> <p>Schedule, (P - 80, Item. No. - 7, PWD S&P</p>	2	881.00	Each	1762.00
<p>Supplying, fitting and fixing 10 litre porcelain low-down cistern of approvedmakewitheither sideor bottominlet, sideoverflow, brackets complete with all internal PVC fittings. White</p> <p>[SANITARY AND DRAINAGE WORKS, Page- 36, It. No- 11]</p>	4	2297.00	Nos	9188.00
<p>Supplying,fitting and fixing 32 mm dia. Flush Pipe of approved make with necessary fixing materials and clamps complete.</p> <p>i) Polythene Flush Pipe Schedule, Page no 81. Item no. 11(i)</p>	4	155.00	Each	620.00
<p>Supplying, fitting and fixing urinal flush pipe fittings of approved brand.</p> <p>(a) C.P. urinal flush pipe fittings range of one PWD S&P Schedule, S.P.81,Item-12/a</p>	3	414.00	Each	1242.00
<p>Supplying, fitting and fixing white vitreous china best quality approved make wash basin with C.I. brackets on 75 mm X 75 mm wooden blocks, C.P. waste fittings of 32 mm dia.,</p> <p>mending good all damages and painting the brackets with two coats of approved paint.</p> <p>(ii) 630 mm X 450 mm size S&P Schedule, P-41, It 2 (iii)</p>	2	3260.00	Each	6520.00
<p>Supplying,fitting and fixing approved brand P.V.C. CONNECTOR white flexible, with both ends coupling with heavy brass C.P. nut, 15 mm dia.,</p> <p>(iii) 600 mm long S&P Schedule, Page No.-43 Item No.-9-ii PWD,</p>	7	107.00	Each	749.00
<p>Supplying,fitting and fixing approved brand 32 mm dia.P.V.C. waste pipe, with PVC coupling at one end fitted with necessary clamps.</p> <p>(iv) 1050 mm long each PWD S&P Schedule, Page No.-43 Item No. 10-iv</p>	7	91.00	Each	637.00
<p>(f) Hand Shower(Health Faucet) with 1mtr Flexible Tube with Wall Hook(Equivalent to Code No.573 & Model -ALLIED of Jaquar or similar).</p> <p>PWD S&P Schedule, Page No.-3 Item No.- 3 f,</p>	4	1251.00	Each	5004.00
<p>(ii) Chromium plated Bib Cock long body with wall flange with aerator (Equivalent to Code No. 512 & Model- Tropical / Sumthing Special of ESSCO or similar brand)</p> <p>[SANITARY AND DRAINAGE WORKS, Page- 6, It. No- 7. a.ii]</p>	4	659.00	Each	2636.00
<p>(b) (i) Chromium plated Stop Cock (Equivalent to Code No. 513(A) & 513(B) & Model - Tropical / Sumthing Special of ESSCO or similar PWD S&P Schedule, Page No.-6 Item No.-7-b-i</p>	4	493.00	Each	1972.00
<p>Supplying, fitting and fixing shower of approved brand and make.</p> <p>(ii) Chromium plated round shower with revolving joint (Equivalent toCode No. 541(N) & Model - Tropical / Sumthing Special of ESSCO or similar brand).</p> <p>PWD S&P Schedule, Page No.-3 Item No.-3- a-ii</p>	2	360.00	Each	720.00
<p>(iii) Chromium plated shower arm 240 mm long (Equivalent to Code No. 536(A) & Model - Tropical / Sumthing Special of ESSCO or similar brand).</p> <p>Page No.-3 Item No.-3-a-(iii), PWD,VOL-II, 2017-18</p>	2	309.00	Each	618.00

Item Description & Item No.	Quantity	Rate	Unit	Amount(Rs.)
chromium plated angular Stop Cock with wall flange (Equivalent to Code No. 5053 & Model - Florentine of Jaquar or similar brand). PWD S&P Schedule, Page No.-6 Item No.-7-d-1,	12	815.00	Each	9780.00
Supplying, fitting and fixing pillar cock of approved make. a) (i) CP Pillar Cock - 15 mm. (Equivalent to Code No. 507 & Model - Tropical / Sumthing Special of ESSCO or similar brand). (P. No. - 45, Item. No. - 19(a)I, Pwd Sanitary Plumbing Schedule 2017)	2	555.00	Each	1110.00
Supplying, fitting and fixing PVC pipes of approved make of Schedule 80 (medium duty) conforming to ASTM D - 1785 and threaded to match with GI Pipes as per IS : 1239 (Part - I), with all necessary accessories, specials viz. socket, bend, tee, union, cross, elbo, nipple, long screw, reducing socket, reducing tee, short piece etc. fitted with holder bats clamps, including cutting pipes, making threads, fitting, fixing etc. complete in all respect including cost of all necessary fittings as required, jointing materials and two coats of painting with approved paint in any position above ground. (Payment will be made on the centre line measurements of total pipe line including all specials. No separate payment will be made for accessories, specials. Payment for painting will be made seperately) PVC Pipes, 25 mm 12 Item No.-19-(a), PWD,VOL-II, 2017-18 (a) For Exposed Work Page No.-	35	177.00	Mtr	6195.00
60				
(a) (a) For Exposed Work PVC Pipes, 15 mm Page No.-12 Item No.-19-(a), PWD,VOL-II, 2017-18	20	101.00	Mtr	2020.00
61				
(b) For Concealed Work PVC Pipes, 15 mm Page No.-12 Item No.-19-(b), PWD,VOL-II, 2017-18	20	137.00	Mtr	2740.00
62				
Supplying and fitting fixing of gunmetal wheel valve of approved brand and make tested to 21 Kg per sq. cm. 25 mm dia(ES) PWD S&P Schedule, P-5 It-5,viii),	3	778.00	Each	2334.00
63				
Supplying P.V.C. water storage tank of approved quality with closed top with lid (Black) Multilayer (b) 1000 litre capacity S&P Schedule, page:37,Item no-6 (b) PWD	2	5128.00	Each	10256.00
64				
Labour for hoisting plastic water storage tank. (a) Upto 1st story from G.L. (i) Upto 1500 litre capacity. PWD S&P Schedule, page:37,Item no-10 (i)(a)	2	96.00	Each	192.00
65				
Labour for punching hole in plastic water storage tank upto 50 mm dia.	4	19.00	Each	76.00
66				
PWD S&P Schedule, (P. No. - 38, Item. No. - 13 Supply of UPVC pipes (B Type) & fittings conforming to IS-13592-1992.(A) (i) Single Socketed 3 Meter Length, (b) 110 mm PWD S&P Schedule, Page No.-68 Item No. 23.(A)(i)(b) (i)	30	292.00	Mtr	8760.00
67				
(B) Fittings Coupler, (b) 110 mm (ii) Plain Tee, (b) 110 mm (iii) Door Tee, (b) 110 mm	12	85.00	Each	1020.00
68				
(iii) Door Tee, (b) 110 mm	9	195.00	Each	1755.00
69				
(ix) Bend 45e, (b) 110 mm	9	89.00	Each	801.00
70				
(xi) Door Bend (T.S.), (b) 110 mm	7	147.00	Each	1029.00
71				
(xvi) Pipe Clip, (b) 110 mm	30	21.00	Each	630.00
72				
(xvii) W.C. Connector (150 mm long) 125 X 110(W/WC Ring) 75 mm	6	142.00	Each	852.00
73				
(xxxi) Plain Floor Trap with Top tile & Strainer 75 mm	6	144.00	Each	864.00
74				
(l) Rubber Ring, (b) 110 mm	30	17.00	Each	510.00
75				
76				

Item Description & Item No.	Quantity	Rate	Unit	Amount(Rs.)
Rubber Lubricant 500 ML	5	187.00	500 ML	935.00
D)Solvent Cement 250 ML	5	103.00	250 ML	515.00
Labour for fitting and fixing U.P.V.C. pipes for above ground work including cost of jointing materials etc. fitting and fixing all necessary specials, cutting pipes, cutting holes in total pipeline including specials. (B) Under ground, (ii) 110 mm dia. PWD S&P Schedule, (P. - 74, Item. No. - 24 (B)	30	84.00	Mtr	2520.00
Supplying, fitting & fixing UPVC pipes A- Type and fittings conforming to IS:13592-1992 with all necessary clamps nails, including making holes in walls, floor etc. cutting trenches in any soil through masonry concrete structures etc if necessary and mending good damages including joining with jointing materials (Spun Yarn, Valamoid/Bitumen/M-Seal etc) complete.	12	188.00	Mtr	2256.00
A) UPVC Pipes: (i) 75 mm. Dia. (P. - 212, Item. No. - 21 (A)(i), (B),(c),(i) & (B), (d),(i), Pwd volume-i, 2017)				
B) UPVC Fittings: c) Bend 87.5 degree (i) 75 mm. Dia.	4	84.00	Mtr	336.00
B) UPVC Fittings: d) Shoe (i) 75 mm. Dia.	4	78.00	Mtr	312.00
Constructing Inspection pit of inside measurement 600mm X 600mm X upto 600mm (depth) with 250 mm thick 1st. class brick work in cement mortar (1:4) on all sides, bottom of the pit consisting of 100 mm thick cement concrete (1:3:6) with stone chips over a layer of jhama brick flat soling, 15 mm thick (1:4) cement plaster to inside walls and out-side walls upto G.L. and 20 mm.thick (1:4) plaster to bottom of the pit, providing necessary invert with cement concrete (1:3:6) with stone chips as per direction, neat cement finishing to entire internal surfaces, top of the pit covered with 100 mm thick R.C.C. slab (1:1.5:3) with stone chips and necessary reinforcements upto 1% and shuttering including 6 mm thick cement plaster (1:4) in all external surfaces of the slab and one 560 mm dia. R.C.C. manhole cover of approved make supplied, fitted and fixed in the slab with necessary fittings, necessary earthwork in excavation in all sorts of soil, filling sides of the pit with earth and removing spoils after work complete in all respect with all costs of labour and materials. i) With Pakur variety.(OTHER MANUFACTURES NOT SPECIFIED) 7th CORRIGENDA & ADDENDA, Dated: 22.01.2020, Page 1 of 7, PWD(WB), S.O.R. Volume - II : Sanitary & Plumbing Works w.e.f. 01/11/2017, Item No. - 1, Page No.- 87	3	6648.00	Each	19944.00
Construction of septic tank of different capacities as per approved drawing with 1st class brick work in cement mortar (1:4) including two 560 mm dia. R.C.C. manhole cover(heavy type)of approved make supplied, fitted and fixed in the 100mm thick R.C.C.(1:1.5:3) top slab with necessary fittings, 20mm thick cement plaster (4 : 1) with neat cement finish to the internal surfaces and 15 mm thick cement plaster (4 : 1) to outside wall upto 200 mm below G.L. floor finished with 25 mm thick grey artificial stone over 100 mm thick R.C.C.(1:1.5:3) bottom slab including supplying, fitting and fixing all necessary specials, fittings, S.W. tees, C.I. foot rest etc. including excavation earth in all sorts of soil, shoring, bailing out and pumping out water as necessary, rramming, dressing the bed and refilling the sides of the tanks with earth, removing spoils, filling up the chamber with clear water, removing foreign materials from the chamber and including constructing attached inspection pit as per approved drawing and connecting all necessary pipes, joints etc. with internal plaster work and artificial stone flooring is to be done with admixture of water proofing compound @ 0.5% by weight of cement with all costs of labour and materials. Note:- (i) Finished level of Septic Tank should be 400 mm. from Ground Level. (ii) Height of 50 mm Ventilation pipe &Mosquito proof mesh, should be followed as per IS:2470,Part-1, Payment will be made separately on the basis of actual height based on relevant I.S. Code. 7th CORRIGENDA & ADDENDA, Dated: 22.01.2020, Page 3 of 7, PWD(WB), S.O.R. Volume - II : Sanitary & Plumbing Works w.e.f. 01/11/2017, Item No. - 3, Page No.- 88 (iii) For 30 users ii) With Pakur variety.(OTHER MANUFACTURES NOT SPECIFIED)	1	58772.00	Each	58772.00

Item Description & Item No.

85 construction of circular soak well 2.5 metre deep in all types of sandy soils with dry brick work upto 1.6 metre from the bottom having 150 mm intermediate cement brick work (1:4) band all round and cement brick work (1:4) upto 0.90 metre from top with 20mm thick cement plastering (1:4) to inside face upto the depth of cement brick work, 15mm thick cement plaster (1:4) on outer face from top of the well upto G.L. and 6 mm thick cement plaster (1:4) on top of the R.C.C. cover slab including filling bottom 1.00 metre of inside of the well with brick metal (50 mm to 63 mm size) including R.C.C. cover slab of 100 mm thick with cement conc (1:1.5:3) with stone chips with necessary reinforcement and shuttering including one 560 mm dia. R.C.C. manhole cover (heavy type) of approved make supplied, fitted and fixed in the cover slab with necessary fittings, making necessary arrangements for pipe connections, excavation of well including shoring, dewatering and removing the excess earth from the premises as per direction complete in all respect with all costs of labour and materials.
with 250 mm thick dry brick work and 250 mm thick cement brick work (1:6) and 1.00m inside dia.
7th CORRIGENDA & ADDENDA, Dated: 22.01.2020, Page 6 of 7, PWD(WB), S.O.R. Volume - II: Sanitary & Plumbing Works w.e.f. 01/11/2017, Item No. - 4, Page No. - 89
For-OTHER MANUFACTURES NOT SPECIFIED)

Quantity	Rate	Unit	Amount(Rs.)
1	15451.00	Each	15451.00

86 Supplying, fitting and fixing towel rail with two brackets.
(a) C.P. over brass (ii) 25 mm dia. and 600 mm long
PWD S&P Schedule, p No 82 I No- 22 (a)(ii)

4	430.00	Each	1720.00
---	--------	------	---------

87 Supplying, fitting and fixing cast iron raised rain proof tank cover 500 mm dia. with locking arrangements (weighing not less than 12 kg).
PWD S&P Schedule, . page-37, item no -8

1	1263.00	Each	1263.00
---	---------	------	---------

88 Supplying, fitting and fixing bevelled edged mirror 5.5 mm thick silver red as per I.S. 3438 / 1965 together with brass C.P. hinges. (ii) 600 mm X 450 mm
PWD S&P Schedule, P-81, It-15(ii)

4	484.00	Each	1936.00
---	--------	------	---------

89 Supplying, fitting and fixing soap holder. (b) Fibre glass
Sanitary and plumbing work schedule P-82, It-18(b)

16	58.00	Each	928.00
----	-------	------	--------

90 Supplying, fitting and fixing porcelain toilet paper holder of approved make with wooden spindle as necessary.
(i) Roll type size 250 mm X 125 mm (A5)
Sanitary & Plumbing works p No 83 I No- 23 (i)

4	293.00	Each	1172.00
---	--------	------	---------

91 Supplying, fitting and fixing glass shelf with aluminium guard rails.
(a) Ordinary type with 5.5 mm sheet glass
(i) 450 mm X 125 mm
Sanitary and plumbing work schedule P-81, It-16(a)(i)

4	341.00	Each	1364.00
---	--------	------	---------

Sub Total Of (A)			794980.57
Add S.G.S.T. @	9%		71548.25
Add C.G.S.T. @	9%		71548.25
Cost Of Civil & Sanitary Work			938077.07
Add L.W.C. @	1%		9380.77
Total payable Amount Including L.W.C.			947457.84
Add Contengency @3%			28142.31
Total payable Amount Including L.W.C. and contengency			975600.15
Say Rs.			975600.00

Pragab R. Dan
S. A. E. (C)
English Bazar Municipality
MALDA

Assistant Engineer
Malda Division
M.E. Directorate
Dept. Of UD & MA
Govt. Of West Bengal

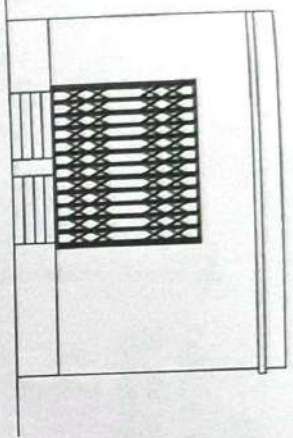
Chairman
English Bazar Municipality
MALDA

Vetted
English Bazar Municipality
MALDA

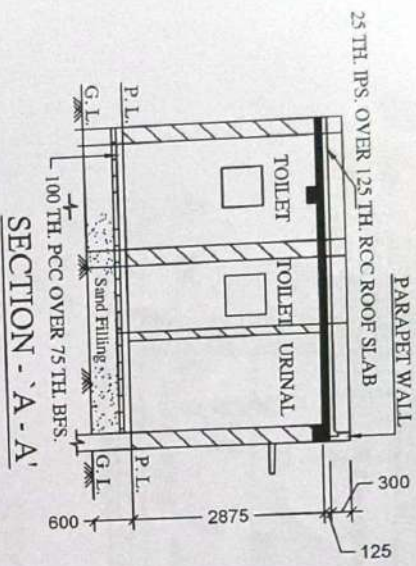
Executive Engineer
Malda Division
M.E. Directorate
Dept. Of UD & MA
Govt. Of West Bengal

Junior Engineer
Malda Division
Municipal Engineering Directorate
Govt. of West Bengal

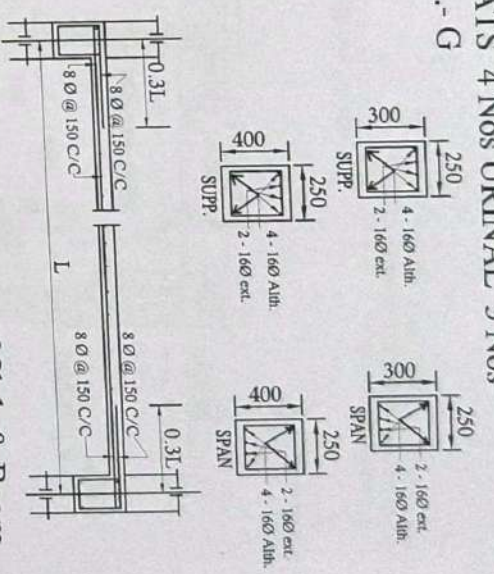
MODEL DRAWING FOR CONSTRUCTION OF P.T.
 TOILET SEATS 4 Nos URINAL 5 Nos
 MODEL NO. - G



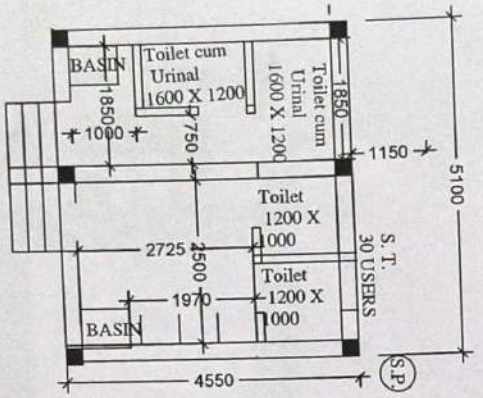
FRONT ELEVATION



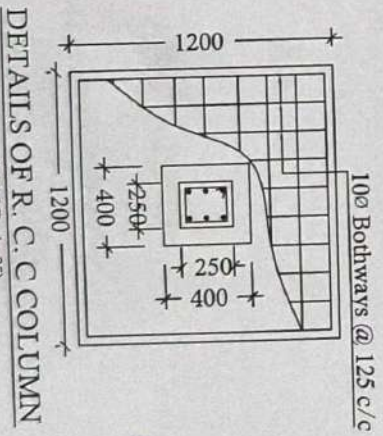
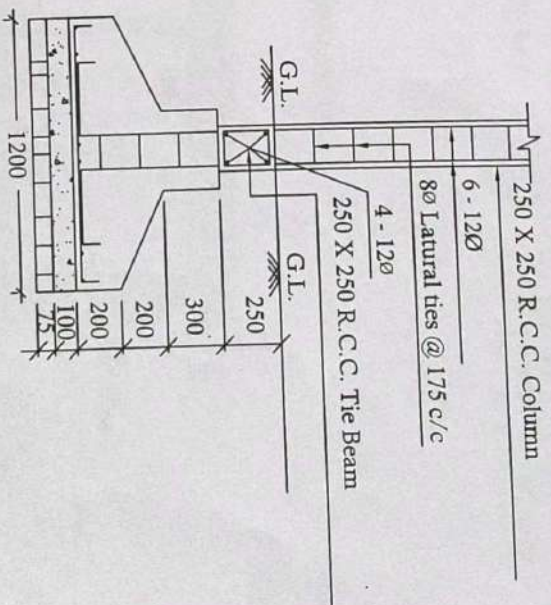
SECTION - 'A-A'



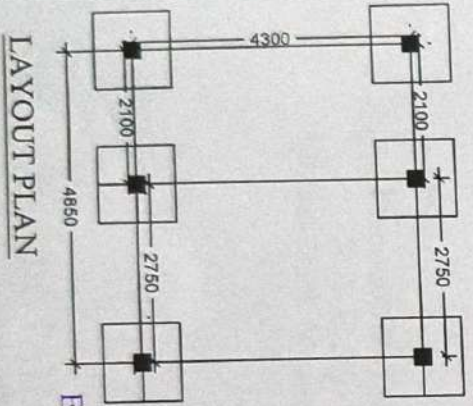
Details Of R.C.C Roof Slab & Beam
 (SCALE - 1:1:25)



PLAN



DETAILS OF R.C.C COLUMN
 (SCALE - 1:1:25)



LAYOUT PLAN

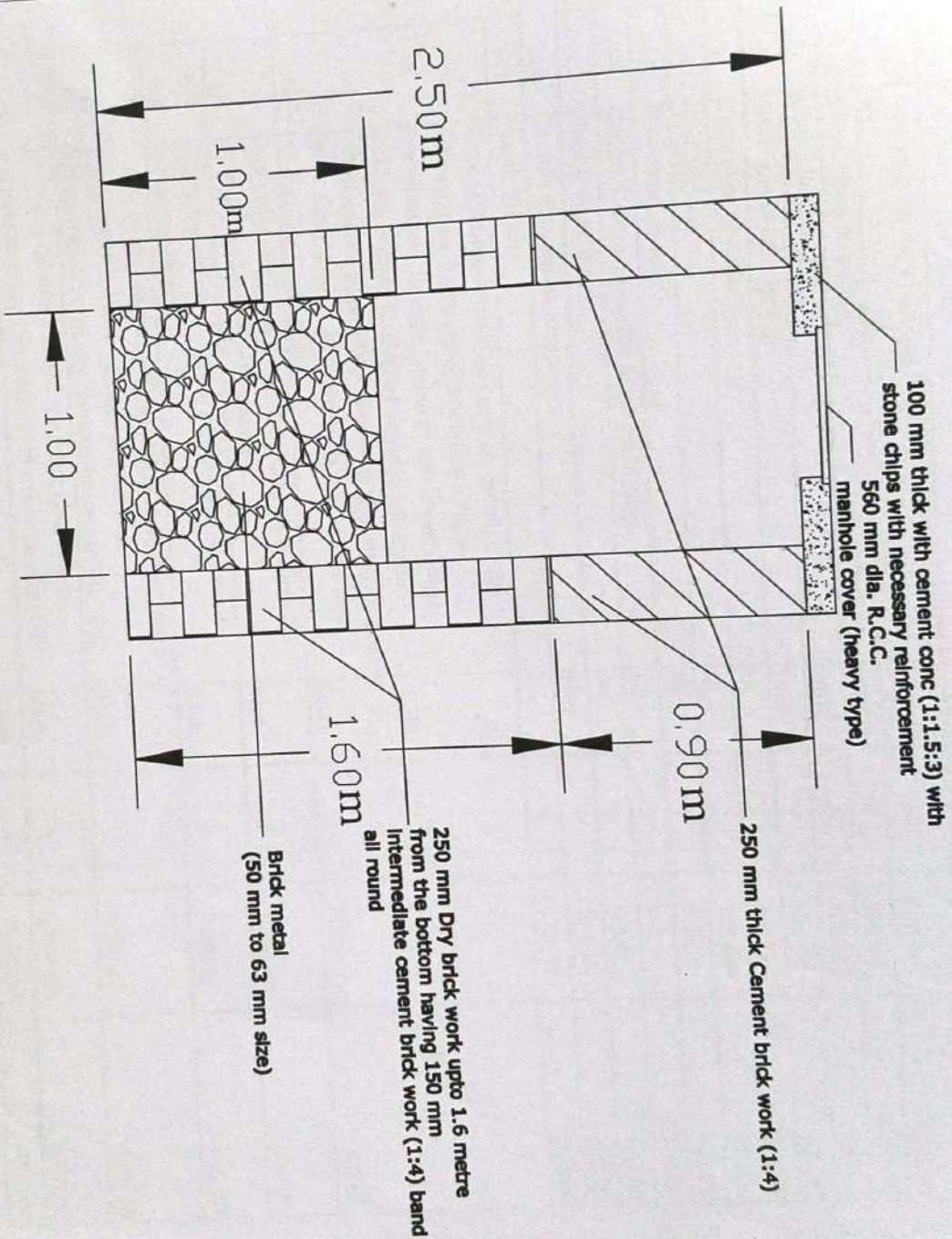
Pranab K. Das
 S. A. E. (C)
 English Bazar Municipality
 MALDA

Chairman
 English Bazar Municipality
 MALDA

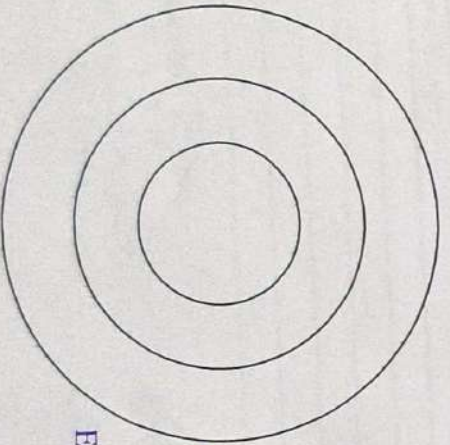
M. E. Director
 Assistant Engineer
 Malda Division
 M.E. Directorate
 Dept. Of UD & MA
 Govt. Of West Benge

M. E. Director

CIRCULAR SOAK WELL



Note:- 20mm thick cement plastering (1:4) to inside face upto the depth of cement brick work, 15mm thick cement plaster (1:4) on outer face from top of the well upto G.L. and 6 mm thick cement plaster (1:4) on top of the R.C.C. cover slab.



Pranab R Das
S. A. E. (C)
English Bazar Municipality
MALDA

Sanjit Kumar
Assistant Engineer
Malda Division
M.E. Directorate
Dept. Of UD & MA
Govt. Of West Bengal