

Details Estimate(Civil)

Sl NO.	SCHEDULE	ITEM	NO	LENGTH	BREATH	HEIGHT	QTY	UNIT	
1	P.W.D BLDG SCHEDULE_WEF 01.11.2017 1- 1(A) 2(a)	Earth work in excavation of foundation trenches or drains, in all sorts of soil (including mixed soil but excluding laterite or sandstone) including removing, spreading or stacking the spoils within a lead of 75 m. as directed. The item includes necessary trimming the sides of trenches levelling, dressing and ramming the bottom, bailing out water as required complete. (a) Depth of excavation not exceeding 1,500 mm.	8	1.5	1.5	1.4	25.20		
			1	1.5	1.5	1.4	3.15		
			3	9.2	0.375	0.3	3.11		
			4	4	0.375	0.3	1.80		
			1	9.2	4	0.2	7.36		
			1	5.5	0.45	0.75	1.86		
			1	3.1	0.3	0.6	0.56		
								43.04	
								0.43	%M3
			2	P.W.D BLDG SCHEDULE_WEF 01.11.2017 1- 1(A) 3(a)	Earth work in filling in foundation trenches or plinth with good earth, in layers not exceeding 150 mm. including watering and ramming etc. layer by layer complete. (Payment to be made on the basis of measurement of finished quantity of work) (a) With earth obtained from excavation of foundation.	8	1.2	1.2	0.5
3	9.2	0.25				0.1	0.69		
4	4	0.25				0.1	0.40		
1	5.5	0.2				0.1	0.11		
								6.96	
								0.07	%M3
3	P.W.D. (Bldg) 2017,5th Corr.16.04.2019 Page 2, Item 1	Filling in foundation or plinth by silver sand in layers not exceeding 150 mm. As directed and consolidating same by thorough saturation with water ramming complete including the cost of supply of sand. (Payment to be made on measurement of finished quantity)	8	1.2	1.2	0.075	0.86		
			3	9.2	0.375	0.075	0.78		
			4	4	0.375	0.075	0.45		
			1	1.5	1.5	0.075	0.17		
			1	9.2	4	0.1	3.68		
			1	5.5	0.375	0.075	0.15		
			1	3.1	0.3	0.075	0.07		
			2	10.5	1.2	0.075	1.89		
			2	4.5	1.2	0.075	0.81		
								8.86	
					0.09	%M3			
4	P.W.D. (Bldg) 2017 ,3rd corr 04.06.2018,p-1	BRICK WORKS 1. Single Brick Flat Soling of picked jhama bricks including ramming and dressing bed to proper level and filling joints with local sand.	8	1.2	1.2		11.52		
			3	9.2	0.375		10.35		
			4	4	0.375		6		
			1	1.5	1.5		2.25		
			1	9.2	4		36.8		
			1	5.5	0.375		2.06		
			1	3.1	0.3		0.93		
			2	10.5	1.2		25.2		
			2	4.5	1.2		10.8		
			1	24.2	0.582		14.08		
					119.99	SQM			
5	P.W.D. (Bldg) 2017 ,3rd corr. 04.06.2018,p-10	Cement concrete with graded jhama khoa (30 mm size) excluding shuttering in ground floor and foundation (a) 1:3:6 proportion	1	9.2	4	0.1	3.68		
			2	1.2	1.1	0.25	0.66		
			2	10.5	1.2	0.075	1.89		
			2	4.5	1.2	0.075	0.81		
			8	1.2	1.2	0.075	0.86		
			3	9.2	0.375	0.075	0.78		
			4	4	0.375	0.075	0.45		
			1	1.5	1.5	0.075	0.17		
			1	5.5	0.375	0.075	0.15		
			1	3.1	0.3	0.075	0.07		
1	24.2	0.157		3.8					
					13.32	M3			
6	P.W.D. (Bldg) 2017 ,3rd corr. 04.06.2018,p-1,1-3	Brick work with 1st class bricks in cement mortar (1:4) (a) in foundation and plinth	2	8.875	0.25	0.75	3.33		
			4	3.75	0.25	0.75	2.81		
			1	3.1	0.25	0.3	0.23		
			1	5.5	0.25	0.3	0.41		
			1	10.8	0.375	0.225	0.91		
			1	2.2	0.375	0.3	0.25		
					7.94	M3			
7	P.W.D. (Bldg) 2017 ,3rd corr. 04.06.2018,p-18,1- 46	25mm. Thick damp proof course with cement concrete with stone chips (1:1.5:3) [with graded stone aggregate 10 mm nominal size] and admixture of water proofing compound as per manufacture's specification followed by two coat of polymer based paint, (1st coat after 4 to 5 days of concrete laying and 2nd coat just before brick masonry work) as directed (cost of water proofing compound & polymer based paint to be paid separately). (Chequering not required over concrete or painted surface.)	2	8.875	0.25		4.44		
			4	3.75	0.25		3.75		
			1	3.1	0.25		0.78		
			1	5.5	0.25		1.38		

Nayan  
30/01/26  
SPEC/105

Asst. Engineer (C)  
Uttaran Services Department  
K. M. C.

Executive Engineer (Civil)  
Uttaran Services Department  
K. M. C.

SL NO.	SCHEDULE	ITEM	NO	LENGTH	BREATH	HEIGHT	QUANTITY	UNIT
							10.35	SQM
8	P.W.D. (Bldg) 2017 3rd corr. 04.06.2018,p-1,i-3	Brick work with 1st class bricks in cement mortar (4:1) b) in Superstructure & ground floor.	2	8.875	0.25	2.9	12.87	
			6	3.75	0.25	2.9	16.31	
			2	8.875	0.25	0.6	2.66	
			2	3.75	0.25	0.6	1.13	
			3	0.25	0.25	2.9	0.54	
			1	10.8	0.25	0.6	1.62	
			1	2.2	0.2	0.75	0.33	
							35.46	M3
9	P.W.D. (Bldg) 2017 3rd corr. 04.06.2018,p-3,i-8	125 mm. thick brick work with 1st class bricks in cement mortar (1:4) in ground floor.	2	8.5		6	102	
			3	2.8		2.9	24.36	
			1	6.3		2.9	18.27	
			6	1.2		2.9	20.88	
			2	2		2.9	11.6	
			11	1.15		2.9	36.69	
			1	4.4		2.9	12.76	
			1	3.3		2.9	9.57	
			2	4		0.3	2.4	
			1	5.5		1.4	7.7	
							246.23	SQM
10	KMC.CONSO LIDAT E D RATE CIVIL_2018 2-2/b	Ordinary cement concrete(mix 1:1.5:3) with graded stone chips (20 mm. nominal size)excluding shuttering and reinforcement, if any, in ground floor as per IS codes. a) Pakur / Chandil Variety	8	1.2	1.2	0.15	1.73	
			8	0.8	0.8	0.25	1.28	
			8	0.4	0.4	0.75	0.96	
			3	7.9	0.25	0.3	1.78	
			4	3.75	0.25	0.3	1.13	
			8	0.25	0.25	6.2	3.1	
			2	1.5	1.5	0.125	0.56	
			4	1.4	0.11	1.2	0.74	
			3	2	0.25	0.3	0.45	
			2	2.2	0.8	0.125	0.44	
			2	1.8	0.9	0.125	0.41	
			18	0.15	0.25	0.125	0.08	
			1	4	7.075	0.1	2.83	
			1	1	1.5	0.1	0.15	
			1	1.45	1.8	0.1	0.26	
			1	4	0.45	0.1	0.18	
			3	7.9	0.25	0.2	1.19	
			4	3.5	0.25	0.2	0.7	
			1	9.425	4.45	0.1	4.19	
			3	7.9	0.25	0.2	1.19	
			4	3.5	0.25	0.2	0.7	
			2	5.2	0.45	0.1	0.47	
			16	1.5	0.125	0.15	0.45	
							24.97	M3
11	KMC.CONSO LIDAT E D RATE ROADS_2018 BASED ON P.W.D. SCHEDULE W.E.F. 1.11.2017 1-35	Reinforcement for reinforced concrete work in all sorts of structures including distribution bars, stirrups, binders etc initial straightening and removal of loose rust (if necessary), cutting to requisite length, hooking and bending to correct shape, placing in proper position and binding with 16 gauge black annealed wire at every intersection, complete as per drawing and direction. (a) For works in foundation and upto roof of ground floor/upto 4 m (i) Tor steel/Mild Steel (i) SAIL/TATA/RINL,For 1st floor	1	24.97	0.011	7850	2156.16	
							2.16	MT
12	PWD.BLDG SCHEDULE_WEF 01.11.2017 42- 1(C).B. 36(a)	Hire and Labour charges for shuttering with centering and necessary staging upto 4m using approved stout, props and thick hard wood planks of approved thickness with required bracing for concrete slabs, beams, columns lintels, curved or straight including fitting, fixing and striking out after completion of works (upto roof of ground floor). 25 mm to 30 mm thick wooden shuttering as per decision & direction of Engineer-in-charge.	8	4.8		0.15	5.76	
			8	1.6		0.75	9.6	
			6	7.9		0.3	14.22	
			8	3.75		0.3	9	
			8	1		6.2	49.6	
			1	1.5		1.5	2.25	
			8	1.4		1.2	13.44	
			3	2		0.25	1.5	
			6	2		0.3	3.6	
			2	2.2		0.8	3.52	
			1	1.8		0.9	1.62	
			18	0.9		0.15	2.43	
			1	4		7.075	28.3	
			1	1		1.5	1.5	
			1	1.45		1.8	2.61	
			1	4		0.45	1.8	
			6	7.9		0.2	9.48	
			8	3.5		0.2	5.6	
			1	9.425		4.45	41.94	
			6	7.9		0.2	9.48	
			8	3.5		0.2	5.6	
			2	5.2		0.55	5.72	
			16	1.25		0.125	2.5	

Executive Engineer (Civil)  
Haran Services Department  
K. M. C.

30/11/26  
SAE(C)/105

30/11/26  
Asst. Engineer (C)  
Haran Services Department  
K. M. C.

SL NO.	SCHEDULE	ITEM	NO	LENGTH	BREATH	HEIGHT	QUANTITY	UNIT
13	P.W.D. (Bldg) 2017,3rd corr. 04.06.2018,p-50,-1	1.Plaster (to wall, floor, ceiling etc.) with sand and cement mortar including rounding off or chamfering corners as directed and raking out joints including throating, nosing and drip course, scaffolding/staging where necessary (Ground floor).[Excluding cost of chipping over concrete surface](ii) With 1:4 cement mortar (a) 20 mm thick plaster	32	1.2		0.15	5.76	SQM
							236.83	
			2	9.2		7	128.8	
			1	9.2		2.9	26.68	
			2	3.2		3.2	20.48	
			8	0.25		2.9	5.8	
			2	0.25		6.5	3.25	
			8	0.25		3.2	6.4	
			2	2.4		1	4.8	
			2	2.4		2.9	13.92	
14	P.W.D. (Bldg) 2017,3rd corr. 04.06.2018,p-50,-1	Plaster (to wall, floor, ceiling etc.) with sand and cement mortar including rounding off or chamfering corners as directed and raking out joints including throating, nosing and drip course, scaffolding/staging where necessary (Ground floor).[Excluding cost of chipping over concrete surface](ii) With 1:4 cement mortar (b) 15 mm thick plaster					210.13	SQM
			2	1.8		5.7	20.52	
			2	2.55		5.7	29.07	
			2	2.6		1.1	5.72	
			2	2.75		1.1	6.05	
			2	2.9		1.1	6.38	
			6	2.3		1.1	15.18	
			2	5.9		1.1	12.98	
			2	3.2		1.1	7.04	
			2	2.9		1.1	6.38	
			7	2.3		1.1	17.71	
			2	6.8		1.1	14.96	
			2	5.1		1.1	11.22	
			2	10.5		2.9	60.9	
15	P.W.D. (Bldg) 2017,3rd corr. 04.06.2018,p-50,-1(i)c	Plaster (to wall, floor, ceiling etc.) with sand and cement mortar including rounding off or chamfering corners as directed and raking out joints including throating, nosing and drip course, scaffolding/staging where necessary (Ground floor).[Excluding cost of chipping over concrete surface](ii) With 1:4 cement mortar (c) 10 mm thick plaster					214.11	SQM
			2	9	3.75		67.5	
			2	9.5	0.45		8.55	
			2	4.25	0.45		3.83	
16	P.W.D. (Bldg) 2017 Page 14,Item No 1,3rd corr. 04.06.2018,p-80,-1	Supplying and laying true to line and level Anti-Skid, Full Body, Homogeneous & Granular finish Vitrified Tiles conforming to IS-15622-2006 & IS 4457-2007 and testing shall be made in accordance with IS-13630 [Non-modular sizes for tiles with Skid resistance > 0.5, Mohr's hardness > 5.0, Staining resistance Class-1, Water Absorption E < 0.5%, MOR > 35 N/sq.mm in Internal area of building e.g Toilet Block, Passage, Corridor, Accessible Open Terrace etc. set in 20 mm sand cement mortar (1:4) and 2 mm thick cement slurry at back side of tiles using cement @ 2.91 Kg./Sq.m or using Polymerised Adhesive (6 mm thick layer applied directly over finished artificial stone floor/ Mosaic etc without any backing course) laid after application slurry using 1.75 Kg of cement per Sqm below mortar only, joints grouted with admixture of white cement and colouring pigment to match with colour of tiles/ epoxy grout materials of approved make as directed and removal of wax coating of top surface of tiles with warm water and polishing the tiles using soft and dry cloth upto mirror finish complete including the cost of materials, labour and all other incidental charges complete true to the manufacturer's specification and direction of Engineer-in-Charge. (White cement, synthetic adhesive and grout					79.88	SQM
			1	7.2	3.75		27.00	
			1	7.2	3.75		27.00	
			2	14.2	0.15		4.26	
							58.26	SQM
17	P.W.D. (Bldg) 2017,3rd corr. 04.06.2018,p-36,-22	Supplying, fitting & fixing 1st quality Ceramic tiles in walls and floors to match with the existing work & 4 nos. of key stones (10mm) fixed with araldite at the back of each tile & finishing the joints with white cement mixed with colouring oxide if required to match the colour of tiles including roughening of concrete surface, if necessary or by synthetic adhesive & grout materials etc (B) Wall with Sand Cement Mortar (1:3) 15 mm thick & 2 mm thick cement slurry at back side of tiles using cement @ 2.91 Kg/Sq.m & joint filling using white cement slurry @ 0.20kg/Sq.m. (a) Area of each tile Above 0.09 Sq.m (i) Coloured decorative						
			3	4.6	2.1		28.98	
			2	2.6	2.1		10.92	
			2	2.75	2.1		11.55	
			1	4.175	2.1		8.77	
			2	6.88	2.1		28.9	
			2	2.3	2.1		9.66	
			2	3.2	2.1		13.44	
			7	4.5	2.1		66.15	
			2	6.8	2.1		28.56	
			2	5.1	2.1		21.42	
18	PWD.BLDG SCHEDULE_WEF 01.11.2017 192-1.I.A.15	Neat cement punning about 1.5mm thick in wall, dado, window sill, floor etc. NOTE:Cement 0.152 cu.m per100 sq.m.					228.35	SQM
			2	1.2	1.2		2.88	
			4	1.5	1.2		7.2	
			1	5.1	1.1		5.61	
19	Sanitary & Plumb.2017 Page-79, Item No. 2	Supplying, fitting and fixing E.W.C. in white glazed vitreous chinaware of approved make complete in position with necessary bolts, nuts etc (b) With 'S' trap					15.69	SQM
			2					
						2	EACH	

Namar  
30/01/26  
SAEK/103

Asst. Engineer (C)  
Uttaran Services Department  
K. M. C.

Executive Engineer (Civil)  
Uttaran Services Department  
K. M. C.

SL NO.	SCHEDULE	ITEM	NO	LENGTH	BREATH	HEIGHT	QUANTITY	UNIT
20	PWD SANITARY AND PLUMBING 2017 79-B-B(III)-(a),4,(ii)	Supplying, fitting and fixing Orissa pattern water closet in white glazed vitreous chinaware of approved make in position complete excluding 'P' or 'S' trap (excluding cost of concrete for fixing) (ii) 530 mm X 410 mm	2				2	EACH
21	PWD SANITARY AND PLUMBING 2017, P-66-B-B(II)-(a)14 (A)(ii)	Supplying, fitting and fixing cast iron 'P' or 'S' trap conforming to I.S. 1989/ 2009 and 1729/ 2002 including lead caulked joints and painting two coats to the exposed surface. (Painting to be paid separately) (A) 'P' Trap (iii) 100 mm	4				4	EACH
22	P.W.D. (Bldg) 2017 Page- 195 , Item- 7 (i)	Applying Interior grade Acrylic Primer of approved quality and brand on plastered or concrete surface old or new surface to receive Distemper/ Acrylic emulsion paint including scraping and preparing the surface thoroughly, complete as per manufacturer's specification and as per direction of the EIC. (In Ground Floor)(a) One Coat ii) Solvent based interior grade Acrylic Primer	2	1.8		5.7	20.52	
			2	2.55		5.7	29.07	
			2	2.6		1.1	5.72	
			2	2.75		1.1	6.05	
			2	2.9		1.1	6.38	
			6	2.3		1.1	15.18	
			2	5.9		1.1	12.98	
			2	3.2		1.1	7.04	
			2	2.9		1.1	6.38	
			7	2.3		1.1	17.71	
			2	6.8		1.1	14.96	
			2	5.1		1.1	11.22	
			2	10.5		2.9	60.9	
			2	9	3.75		67.5	
			2	9.5	0.45		8.55	
			2	4.25	0.45		3.83	
							293.99	
23	P.W.D. (Bldg) 2017 Page- 196 , Item- 10	Acrylic Distemper to interior wall, ceiling with a coat of solvent based interior grade acrylic primer (as per manufacturer's specification) including cleaning and smoothing of surface. Two Coats					2.94	%SQ
			2	1.8		5.7	20.52	
			2	2.55		5.7	29.07	
			2	2.6		1.1	5.72	
			2	2.75		1.1	6.05	
			2	2.9		1.1	6.38	
			6	2.3		1.1	15.18	
			2	5.9		1.1	12.98	
			2	3.2		1.1	7.04	
			2	2.9		1.1	6.38	
			7	2.3		1.1	17.71	
			2	6.8		1.1	14.96	
			2	5.1		1.1	11.22	
			2	10.5		2.9	60.9	
			2	9	3.75		67.5	
			2	9.5	0.45		8.55	
			2	4.25	0.45		3.83	
							293.99	SQM
24	P.W.D. (S&P) 2017 7th corr. 22.01.2020,p-1,1-1	Constructing Inspection pit of inside measurement 600mm X600mm Xupto 600mm (depth) with 250mm. Thick 1st class brick work in cement mortar (1:4) on all sides, bottom of the pit consisting of 100mm. Thick cement concrete (1:3:6) with stone chips over a layer of Jhama brick flat soling, 15mm thick (1:4) cement plaster to inside walls and out-side walls upto G.L. and 20mm thick (1:4) plaster to bottom of the pit, providing necessary invert with cement concrete (1:3:6) with stone chips as per direction, neat cement finishing to entire internal surfaces, top of the pit covered with 100mm. thick R.C.C. slab (1:1.5:3) with stone chips and necessary reinforcement upto 1% and shuttering including 6mm. thick cement plaster (1:4) in all external surfaces of the slab and one 560mm. dia R.C.C. manhole cover of approved make supplied, fitted and fixed in the slab with necessary fittings, necessary earth work in excavation in all sorts of soil, filling sides of the pit with earth and removing spoils after work complete in all respect with all costs of labour and materials. With Pakur variety.	6					
25	Sanitary & Plumb. 2017 Page- 66, Item No. 16	Supplying, fitting and fixing with cement jointing (3:1) salt glazed stoneware pipe including excavation of earth upto 1.50 metre depth in all sorts of soil both mixed or unmixd and refilling (but excluding concreting at bottom and sides) (iii) 150 mm					6	EA
26	P.W.D. (Bldg) 2017 3rd corr. 04.06.2018,p-18,1-46	Cement concrete (1:1.5:3) with graded stone chips 5.6mm. Size with hexagonal square mesh wire netting I.R.C. Fabric mesh or X.P.M. fitted and fixed after tying the existing reinforcement on concrete without distributing the same and with proper scraping and cleaning the reinforcement and distributed concrete with wire brush etc. after applying a coat of cement excluding the cost of wire netting I.R.C. or X.P.M. but including cost of all handling and scaffolding complete as per direction of Engineer-in-charge. (a) 37.5mm thick.	1	24.2			24.2	MTR
27	PWD BLDG SCHEDULE_WEF 01.11.2017 10-1(B) 2(a)	Dismantling all types of plain cement concrete works, stacking serviceable materials at site and removing rubbish as directed within a lead of 75 m in ground floor including roof. (a) upto 150 mm. thick	1	9.5	4.25		40.38	SQM
			1	6.5	3.1	0.15	3.02	
			1	4.2	2.1	0.15	1.32	

30/1/26  
 Exec' Haran Services Engineer (Civil)  
 Haran Services Department  
 K. M. C.

30/1/26  
 SAE (C) 105

30/1/26  
 Asst. Engineer (C)  
 Haran Services Department  
 K. M. C.

SL NO.	SCHEDULE	ITEM	NO	LENGTH	BREATH	HEIGHT	QUANTITY	UNIT
28	PWD.BLDG SCHEDULE_WEF 01.11.2017 10- 1(B) 1(a)	Dismantling all types of masonry excepting cement concrete plain or reinforced, stacking serviceable materials at site and removing rubbish as directed within a lead of 75 m. (a) in ground floor including roof.					4.34	M3
			2	6.5	0.125	2.9	4.71	
			4	3	0.125	2.9	4.35	
			4	4.2	0.125	1.2	2.52	
29	PWD.BLDG SCHEDULE_WEF 01.11.2017 10- 1(B) 3(a)	Dismantling R.C. floor, roof, beams etc. including cutting rods and removing rubbish as directed within a lead of 75 m. including stacking of steel bars. (a) in ground floor including roof					11.58	M3
			1	6.5	3.1	0.15	3.02	
30	P.W.D. (Bldg) 2017 Page 47, Item No. 3	Supplying and laying polythene sheet (150gm/sqm) over damp proof course or below flooring or roof terracing or in foundation trenches.					3.02	M3
			8	4.8		0.15	5.76	
			8	1.6		0.75	9.6	
			6	7.9		0.3	14.22	
			8	3.75		0.3	9	
			8	1		6.2	49.6	
			1	1.5		1.5	2.25	
			8	1.4		1.2	13.44	
			3	2		0.25	1.5	
			6	2		0.3	3.6	
			2	2.2		0.8	3.52	
			1	1.8		0.9	1.62	
			18	0.9		0.15	2.43	
			1	4		7.075	28.3	
			1	1		1.5	1.5	
			1	1.45		1.8	2.61	
			1	4		0.45	1.8	
			6	7.9		0.2	9.48	
			8	3.5		0.2	5.6	
			1	9.425		4.45	41.94	
			6	7.9		0.3	14.22	
			8	3.5		0.3	8.4	
			2	5.2		0.55	5.72	
			8	1.25		0.125	1.25	
			16	1.2		0.15	2.88	
31	PWD.BLDG SCHEDULE_WEF 01.11.2017 107- 19B	Supplying fitting and fixing steel rolling grills link type, shutter with 18 B.G. of approved type steel to the section 75mm wide, fitted with coil wire spring to necessitate the fitting of required Nos. of C.I. Pulleys on heavy type solid drawn seamless steel tube complete with locking arrangements both inside and outside specially built up side guide channels including providing a hood for the steel rolling shutter in the room, painting two coats of approved aluminium paint over a coat of red lead primer complete.					240.24	SQM
			2	1.5	2.1		6.3	
32	P.W.D. (Bldg) 2017 Page 104, Item No. 13	(a) M.S. or W.I. Ornamental grill of approved design joints continuously welded with M.S. W.I. Flats and bars of windows, railing etc. fitted and fixed with necessary screws and lugs in ground floor. (ii) Grill weighing above 16 Kg./sq.mtr and above  @22 Kg PER SQM					6.3	SQM
			12	0.8	0.6		5.76	
			2	5.2	0.45		4.68	
			3	10.8	0.8		25.92	
						SQM	36.36	
						KG	799.92	
33	PWD.BLDG SCHEDULE_WEF 01.11.2017 192- 1.1.B.1	Labour for Chipping of concrete surface before taking up Plastering work.					8	QTL
			2	9.5	3.5		66.5	
			8	1	3		24	
34	P.W.D. (S&P) 2017 .7th corr. 22.01.2020,p-1,-1	Constructing Inspection pit to a depth of 1.5 metre (inside), 250 mm thick 1st class brick work (1:4) in all sides over a layer of jhama brick soling and 150 mm thick cement concrete with stone chips (1:3:6) including necessary earth work, fitting and fixing approved type S.W. master trap, constructing masonry invert with cement concrete (1:1.5:3) with stone chips, plastering inside and outside (outside upto 300 mm below G.L.) with 20 mm thick cement plastering (1:4) and neat cement punning, including supplying, fitting and fixing one 560 mm. dia R.C.C. manhole cover of approved make with R.C.C. slab of 100 mm thick with cement concrete (1:1.5:3) with stone chips including necessary reinforcement (upto 1%) and shuttering and necessary corbelling brick work (1:4) so that the R.C.C. cover slab rests 150 mm above adjucent G.L., cement plaster (1:4) 10 mm thick on all external surfaces of the top slab as directed complete in all respect and removal of surplus earth with all costs of labour and materials (excluding the cost of master trap only) (i) 900 mm X 750 mm (inside) chamber including fitting and fixing S.W. master trap of 150 mm dia. of approved make A) With Pakur variety. (SAIL/TATA/RINL)					90.5	SQM
			1					
35	PWD.SANITARY AND PLUMBING 2017 93- B.B.IV.9 a(ii)	Supplying, fitting and fixing in position C.I. manhole/ pit cover with rim. (a) Round (ii) 450 mm X 100 mm X 25 kg (approx.)					1	EA
			1					
							1	EA

Nankar  
30/01/26  
SAE(K)/US

30/01/26

30/1/26

Asst. Engineer (C)  
Uttaran Services Department  
K. M. C.

Executive Engineer (Civil)  
Uttaran Services Department  
K. M. C.



SL NO.	SCHEDULE	ITEM	NO	LENGTH	BREATH	HEIGHT	QUANTITY	UNIT
36	P.W.D. (Bldg) 2017 Page-200/ Itrm.1(a)	(a) Priming one coat on steel or other metal surface with synthetic oil bound primer of approved quality including smoothening surfaces by sand papering etc.	12	0.8	0.6		5.76	
			2	5.2	0.45		4.68	
			3	10.8	0.8		25.92	
								36.36
37	P.W.D. (Bldg) 2017 Page-201/ Itrm.2(b), (iv)	(A) Painting with best quality synthetic enamel paint of approved make and brand including smoothening surface by sand papering etc. including using of approved putty etc. on the surface, if necessary : (b) On steel or other metal surface : With super gloss (hi-gloss) - (iv) Two coats (with any shade except white)	12	0.8	0.6		5.76	
			2	5.2	0.45		4.68	
			3	10.8	0.8		25.92	
								36.36
38	P.W.D. SANITARY AND PLUMBING 2017 29-(A) (A)-(III) (a) 1(a)(i)	Supplying, fitting and fixing CPVC (Chlorinated Polyvinyl Chloride) pipes of approved make conforming to IS-15778: 2007 . with all necessary accessories, specials viz (a) For Exposed Work (i) CPVC Pipes Class-1, SDR-11 (Dia) 25 MM	2	12.5			25.00	
							25	MTR
39	P.W.D. SANITARY AND PLUMBING 2017 29-(A) (A)-(III) (a) 1(a)(i)	Supplying, fitting and fixing CPVC (Chlorinated Polyvinyl Chloride) pipes of approved make conforming to IS-15778: 2007 . with all necessary accessories, specials viz (b) For Concealed Work (i) CPVC Pipes Class-1,SDR-11(Dia) (a)15mm	2	22.8			45.60	
							45.6	MTR
40	P.W.D. SANITARY AND PLUMBING 2017 29-(A) (A)-(III) (a) 1(a)(ii)	Supplying, fitting and fixing CPVC (Chlorinated Polyvinyl Chloride) pipes of approved make conforming to IS-15778: 2007 . with all necessary accessories, specials viz (b) For Concealed Work (i) CPVC Pipes Class-1,SDR-11(Dia) (a)20mm	2	28.5			57.00	
							57.00	MTR
41	P.W.D. SANITARY AND PLUMBING 2017 3-A.(A)-(II) 3.(a) (i)	Supplying, fitting and fixing shower of approved brand and make (a) (i) Chromium plated round shower with revolving joint 100 mm dia with rubid cleaning system (Equivalent to Code No. 542(N) & Model - Tropical / Sumthing Special of ESSCO or similar brand).	2					
42	P.W.D. SANITARY AND PLUMBING 2017 5-A.(A)-(II) 5.(vii)	Supplying, fitting and fixing gunmetal wheel valve of approved brand and make tested to 21 kg per sq. cm. (for water lines only). (vii) 25 mm dia	2				2	EA
43	P.W.D. SANITARY AND PLUMBING 2017 6-A.(A)-(II) 7.(b) (i)	Supplying, fitting and fixing bib cock or stop cock. (b) (i) Chromium plated Stop Cock (Equivalent to Code No. 513(A) & 513(B) & Model - Tropical / Sumthing Special of ESSCO or similar	2				2	EA
44	P.W.D. SANITARY AND PLUMBING 2017 36-(A) (A)-(IV)-2	Supplying, fitting and fixing 10 litre P.V.C. low-down cistern conforming to I.S. specification with P.V.C. fittings complete, C.I. brackets including two coats of painting to bracket etc.	8					
							8	EA
45	P.W.D. S&P-2017, Page:-37 It.No.:- 5(b).	Supplying P.V.C. water storage tank of approved quality with closed top with lid (Black) - Multilayer capacity. (d) 1000 litre	4				4	EA
46	P.W.D. (S&P) 2017 P:-37 It.:-10(A).	Labour for hoisting plastic water storage tank (i) Upto 1500 litre capacity (a) Upto 1st story from G.L.	1				1	EA
47	P.W.D. SANITARY AND PLUMBING 2017 38-A-A-IV-13	original works 13 Labour for punching hole in plastic water storage tank upto 50 mm dia.	1				1	EA
48	P.W.D. SANITARY AND PLUMBING 2017 41-A-A-V-41(1)a)iii	Original Works 1 Wash basin vitreous china of approved make (without fittings) supplied, fitted and fixed in position on 75mm X 75 mm X 75 mm wood blocks and C.I. brackets including two coats of painting of C.I. brackets. (iii) 630 mm X 450 mm size	2				2	EA
49	P.W.D. SANITARY AND PLUMBING 2017 80- 7	Supplying, fitting and fixing Squating plate with integral flushing in white vitreous chinaware of approved make in cement concrete (6:3:1) with jhama chips complete. (Payment of concrete will be paid seperately) (i) 450 mm X 350 mm	4				4	EA
			1				1	EA

Nankar  
30/01/26  
SAEK/105

Asst. Engineer (C)  
Uttaran Services Department  
K. M. C.

Executive Engineer (Civil)  
Uttaran Services Department  
K. M. C.

SL NO.	SCHEDULE	ITEM	NO	LENGTH	BREATH	HEIGHT	QUANTITY	UNIT
50	PWD.BLDG SCHEDULE_WEF 01.11.2017 63- 1(D).A.34 (a)	Supplying, fitting & fixing granite slab 15mm to 18mm thick in floor, lobby, stair, landing and treads etc. over 20mm (avg) thick base of cement mortar (1:2) laid with white cement slurry @ 4.40kg per Square meter before placing of granite and jointed with white cement slurry @ 2.0 Kg per square meter with necessary pigments and complete as per direction of Engineer-in-charge including cost of all materials, labours, curing and roughening of concrete surface complete. In ground floor a) Area of each Granite slab upto 0.60 Square meter.	4	1.2	0.75		3.60	
			2	3.65	0.6		1.98	
			1	4.425	1		4.43	
			1	1.2	1.8		2.16	
			3	1.2	0.35		0.54	
			1	10.8	0.6		6.48	
							19.19	SQM
51	PWD.SANITARY AND PLUMBING 2017 82-B-B(III)- (a) 19	Supplying, fitting and fixing best quality Indian make mirror 5.5 mm thick with silvering as per I.S.I. specifications supported on fibre glass frame of any colour, frame size 550 mm X 400 mm	5				5	EA
52	PWD.SANITARY AND PLUMBING 2017 82-B-B(III)- (a) 18 (a)	Supplying, fitting and fixing soap holder (a) PTMT (Prayag or equivalent)	12				12	EA
53		Supplying, fitting and fixing shower of approved brand and make (f) Hand Shower(Health Faucet) with 1mtr Flexible Tube with Wall Hook(Equivalent to Code No 573 & Model -ALLIED of Jaquar or similar).	2				2	EACH
54	PWD.SANITARY AND PLUMBING 2017 82-B-B(III)- (a) 22 (a)(ii)	Supplying, fitting and fixing towel rail with two brackets (a) C.P. over brass (ii) 25 mm dia. and 600 mm long	9				9	EA
55	PWD.BLDG SCHEDULE_WEF 01.11.2017 63- 1(D).A.34 (a)	Supplying and laying true to line and level Anti-Skid, Full Body, Homogeneous & Granular finish Vitrified Tiles conforming to IS:15622-2006 & IS 4457-2007 and testing shall be made in accordance with IS:13630 [Non- modular sizes for tiles with Skid resistance > 0.5, Mohr's hardness > 5.0, Staining resistance: Class-1, Water Absorption: E < 0.5%, MOR > 35 N/sq mm in Internal area of building e.g. Toilet Block, Passage, Corridor, Accessible Open Terrace etc. set in 20 mm sand cement mortar (1:4) and 2 mm thick cement slurry at back side of tiles using cement @ 2.91 Kg./Sqm or using Polymerised Adhesive (6 mm thick layer applied directly over finished artificial stone floor/ Mosaic etc without any backing course) laid after application slurry using 1.75 Kg of cement per Sqm below mortar only, joints grouted with admixture of white cement and colouring pigment to match with colour of tiles/ epoxy grout materials of approved make as directed and removal of wax coating of top surface of tiles with warm water and polishing the tiles using soft and dry cloth upto mirror finish complete including the cost of materials, labour and all other incidental charges complete true to the manufacturer's specification and direction of Engineer-in-Charge. (White cement, synthetic adhesive and grout material to be supplied by the contractor) a) In Ground Floor: Sizes-300 mm	2	10.5	1.2		25.2	
			2	4.5	1.2		10.8	
							36	SQM
56	PWD.BLDG_SCHD_2 017_3rd CORRI_4.6.2018,P 26-1(D).A.(20)	Supplying, fitting and fixing 18 mm. to 22 mm. thick kota stone slab in wall, dado in 15 mm thick (avg) cement mortar (1:3) including making suitable arrangement to hold the stone properly by brass / copper hooks including pointing in cement mortar	1	1.8	3.9		7.02	
			20	1	0.15		3	
			1	1.8	1.2		2.16	
							12.18	SQM
57	PWD.SANITARY AND PLUMBING 2017 19-A-(A)-(II) 20. A. (d)	Supply of High Density Poly-ethylene Pipe conforming to IS - 4984 - 1985 (Dia) [PE - 63] A. 6 Kg / Sq.Cm. (Working Pressure) (Dia) (d) 75 mm	2	6.2			12.4	
							12.4	MTR
58	PWD.BLDG SCHEDULE_WEF 01.11.2017 196- 1.J.A.8(a)	Applying Exterior grade Acrylic primer of approved quality and brand on plastered or concrete surface old or new surface to receive decorative textured (matt finish) or smooth finish acrylic exterior emulsion paint including scraping and preparing the surface thoroughly, complete as per manufacturer's specification and as per direction of the EIC	2	9.2		7	128.8	
			1	9.2		2.9	26.68	
			2	3.2		3.2	20.48	
			8	0.25		2.9	5.8	
			2	0.25		6.5	3.25	
			8	0.25		3.2	6.4	
			2	2.4		1	4.8	
			2	2.4		2.9	13.92	
							210.13	
							2.10	%SQ
59	PWD.BLDG SCHEDULE_WEF 01.11.2017 197- 1.J.A.17(ii)	Protective and Decorative Acrylic exterior emulsion paint of approved quality, as per manufacturer's specification and as per direction of Engineer-in-Charge to be applied over acrylic primer as required. The rate includes cost of material, labour, scaffolding and all incidental charges but excluding the cost of primer. In Ground floor (Two Coat) a) Normal Acrylic Emulsion	2	9.2		7	128.8	
			1	9.2		2.9	26.68	
			2	3.2		3.2	20.48	
			8	0.25		2.9	5.8	

Shankar  
30/04/26  
SAC(C)/105

Asst. Engineer (C)  
Uttaran Services Department  
K. M. C.

Executive Engineer (Civil)  
Uttaran Services Department  
K. M. C.



Sl. NO.	SCHEDULE	ITEM	NO	LENGTH	BREATH	HEIGHT	QUANTITY	UNIT
			7	0.25		6.5	3.25	
			8	0.25		7.2	6.4	
			7	2.4		1	4.8	
			7	2.4		2.9	13.92	
							210.13	SQM
60	PWD.BLDG SCHEDULE_WEF 01.11.2017 115- 10) A. 3 (i)	Supplying, fitting and fixing fibre reinforced polymer (FRP) Composite door frame as per approved section with glass fibre reinforced plastic moulded skins and a special sandwich core, so as to impart monolithic composite structure as per approved technology of Department of Science and Technology (DST) to satisfy IS: 4020 door testing performance criteria (i) 66mm x 90mm	13	4.95			64.35	
							64.35	MTR
61	PWD.BLDG SCHEDULE_WEF 01.11.2017 135- 10) B. 14 (i)	Supplying, fitting & fixing fibre reinforced polymer (FRP) Composite door shutters as per approved design with glass fibre reinforced plastic moulded skins and a special sandwich core, so as to impart monolithic composite structure as per approved technology of Department of Science and Technology (DST) to satisfy IS: 4020 door testing performance criteria. In ground floor (i) 32 mm thick	13	2.1		0.75	20.48	
							20.48	SQM
62	P.W.D. (Bldg) 2017 Page 145, Item No. 29	Anodised aluminium butt hinges of approved quality manufactured from extruded section conforming to IS specification (I.S. 205/66) and fitted and fixed with cadmium plated screws. 75 x 45 x 2.5mm	39				39	
63	P.W.D. (Bldg) 2017 Page 144, Item No. 26	Anodised aluminium barrel/tower/socket bolt(full covered) of approved manufactured from extruded section conforming to I.S. 204/74 fitted and fixed with cadmium plated screws. 100mm long x 10mm dia bolt.	26				26	
64	P.W.D. (Bldg) 2017 Page 146 It. no- 33, a (i)	Anodised aluminium grip handle with base plate of approved quality fitted and fixed complete (a) With base plate. (i) 165mm grip x 12mm dia rod x 42mm plate x 3.2mm thick	26				26	
65	PWD.BLDG SCHEDULE_WEF 01.11.2017 109- 3(F) A. 22	Supplying, fitting and fixing Stainless Steel railing consist of 38mm dia and 900mm height vertical balustrade at every two alternative steps, 50mm dia top rail, 3 (three) nos 19mm dia horizontal Strainless steel pipe and base/cover plate with Strainless Steel GRADE 304	1	3			3.00	
			1	1.2			1.20	
			1	1.5			1.50	
66	PWD.SANITARY AND PLUMBING 2017 81-B-B(III)- (a) 12 (b)	Supplying, fitting and fixing urinal flush pipe fittings of approved brand (b) C.P. urinal flush pipe fittings range of two	5				5.70	MTR
67	PWD.BLDG SCHEDULE_WEF 01.11.2017 198- 1.1 B.5(a)	Rendering the Surface of walls and ceiling with White Cement base WATER PROOF wall putty of approved make & brand (1.5 mm thick)	2	1.8		5.7	20.52	
			2	2.55		5.7	29.07	
			2	2.6		1.1	5.72	
			2	2.75		1.1	6.05	
			2	2.9		1.1	6.38	
			6	2.3		1.1	15.18	
			2	5.9		1.1	12.98	
			2	3.2		1.1	7.04	
			2	2.9		1.1	6.38	
			7	2.3		1.1	17.71	
			2	6.8		1.1	14.96	
			2	5.1		1.1	11.22	
			2	10.5		2.9	60.9	
			2	9	3.75		67.5	
			2	9.5	0.45		8.55	
			2	4.25	0.45		3.83	
68	PWD.SANITARY AND PLUMBING 2017 45-19-A (i)	Supplying, fitting and fixing pillar cock of approved make. a) (i) CP Pillar Cock - 15 mm. (Equivalent to Code No. 507 & Model - Tropical / Sumthing Special of ESSCO or similar brand).	4				293.99	SQM
69	PWD.SANITARY AND PLUMBING 2017 6-7-b (i)	Supplying, fitting and fixing bib cock or stop cock (b) (i) Chromium plated Stop Cock (Equivalent to Code No. 513(A) & 513(B) & Model - Tropical / Sumthing Special of ESSCO or similar	12				4	EACH
70	PWD.SANITARY AND PLUMBING 2017-7-8-a (i) -7-b (i)	Supplying, fitting and fixing push cock of heavy quality and of approved make and brand. (a) Cast iron (i) 15 mm	5				12	EACH
71	PWD.BLDG SCHEDULE_WEF 01.11.2017 62-31	Supplying, fitting & fixing granite tiles 10mm to 12mm thick in columns, wall, facia etc. with 15 thick [avg] cement mortar (1:2) including making suitable arrangements to hold the stones properly by brass / copper hooks including pointing in cement mortar (1:2) (1 white cement : 2 marble dust) with admixture of pigment matching the stone shades all complete as per direction of the Engineer-in-charge including cost of all materials, labours, scaffolding, staging, curing and roughening of concrete surface complete.	2	9.2		1	18.4	
			2	4.1		1	8.2	
			1	5.5		0.6	3.3	
							29.9	SQM

Nayan  
30/01/26  
SPE (C) 105

30/01/26  
Asst. Engineer (C)  
Uttaran Services Department  
K. M. C.

30/1/26  
Executive Engineer (Civil)  
Uttaran Services Department  
K. M. C.

SL.NO.	SCHEDULE	ITEM	NO	LENGTH	BREATH	HEIGHT	QUANTITY	UNIT
72	PWD.BLDG SCHEDULE_W EF 01.11.2017 234-1(R).1.(A)(I)(K)(I)	Supplying profiles of required section made of Aluminium Alloy Extrusions conforming to IS: 732-1983 and IS: 1285-1975; Anodized (with required film thickness and specified colour / natural) matt finished conforming to IS: 1868-1983 for fabrication of composit door, sliding & casement windows, partitions, formed of basic sections of any ISI embossed / certified make and brand as per direction of Engineer - InCharge. (Payment will be made on finished length of the work).					1.4	
		b) 3- track sliding window i) Bottom frame	1	1.4			3.1	
			1	3.1			9.6	
			12	0.8			14.1	MTR
73	PWD.BLDG SCHEDULE_W EF 01.11.2017 235-1(R).1.(A)(I)(K)(ii)a	Supplying profiles of required section made of Aluminium Alloy Extrusions conforming to IS: 732-1983 and IS: 1285-1975; Anodized (with required film thickness and specified colour / natural) matt finished conforming to IS: 1868-1983 for fabrication of composit door, sliding & casement windows, partitions, formed of basic sections of any ISI embossed / certified make and brand as per direction of Engineer - InCharge. (Payment will be made on finished length of the work).					4.40	
		b) 3- track sliding window ii) Top and side frame	1	4.4			7.30	
			1	7.3			28.80	
			12	2.4			40.50	MTR
74	PWD.BLDG SCHEDULE_W EF 01.11.2017 235-1(R).1.(A)(I)(K)(ii)b	Supplying profiles of required section made of Aluminium Alloy Extrusions conforming to IS: 732-1983 and IS: 1285-1975; Anodized (with required film thickness and specified colour / natural) matt finished conforming to IS: 1868-1983 for fabrication of composit door, sliding & casement windows, partitions, formed of basic sections of any ISI embossed / certified make and brand as per direction of Engineer - InCharge. (Payment will be made on finished length of the work).					3.50	
		Shutter for all track sliding window. i) Bottom & Top member.	1	3.5			7.30	
			1	7.3			19.20	
			12	1.6			30.00	MTR
75	PWD.BLDG SCHEDULE_W EF 01.11.2017 235-1(R).1.(A)(I)(K)(ii)c	Supplying profiles of required section made of Aluminium Alloy Extrusions conforming to IS: 732-1983 and IS: 1285-1975; Anodized (with required film thickness and specified colour / natural) matt finished conforming to IS: 1868-1983 for fabrication of composit door, sliding & casement windows, partitions, formed of basic sections of any ISI embossed / certified make and brand as per direction of Engineer - InCharge. (Payment will be made on finished length of the work).					9.00	
		Shutter for all track sliding window. iii) Interlock member.	6	1.5			12.60	
			6	2.1			19.20	
			24	0.8			40.8	MTR
76	PWD.BLDG SCHEDULE_W EF 01.11.2017 235-1(R).1.(A)(I)(K)(ii)d	Supplying profiles of required section made of Aluminium Alloy Extrusions conforming to IS: 732-1983 and IS: 1285-1975; Anodized (with required film thickness and specified colour / natural) matt finished conforming to IS: 1868-1983 for fabrication of composit door, sliding & casement windows, partitions, formed of basic sections of any ISI embossed / certified make and brand as per direction of Engineer - InCharge. (Payment will be made on finished length of the work).					38.40	
		h) Louvered window. i) Top, bottom and side member.	12	3.2			38.40	MTR
77	PWD.BLDG SCHEDULE_W EF 01.11.2017 250-1(R).27(b)	Supplying profiles of required section made of Aluminium Alloy Extrusions conforming to IS: 732-1983 and IS: 1285-1975; Anodized (with required film thickness and specified colour / natural) matt finished conforming to IS: 1868-1983 for fabrication of composit door, sliding & casement windows, partitions, formed of basic sections of any ISI embossed / certified make and brand as per direction of Engineer - InCharge. (Payment will be made on finished length of the work).					19.20	
		h) Louvered window. ii) Louvered Section.	24	0.8			19.20	SQ M
78	PWD.BLDG SCHEDULE_W EF 01.11.2017 243-1(R).9.(iv)	Supplying bubble free float glass of approved make and brand conforming to IS: 2835-1987. iv) 5mm thick coloured / tinted / smoke glass.					2.10	
			1	1.4		1.5	6.51	
			1	3.1		2.1	7.68	
			12	0.8		0.8	16.29	SQ M
79	PWD.BLDG SCHEDULE_W EF 01.11.2017 233-A 1 h ii)	Supplying profiles of required section made of Aluminium Alloy Extrusions conforming to IS: 732-1983 and IS: 1285-1975; Anodized (with required film thickness and specified colour / natural) matt finished conforming to IS: 1868-1983 for fabrication of composit door, sliding & casement windows, partitions, formed of basic sections of any ISI					19.2	
		iii) Cleat angle ( Non-anodized).	24	0.8			19.2	MTR
80	P.W.D. (Bldg) 2017 Page 297, Item No.26(b)	Providing and fixing of factory made uPVC casement window (White Colour) (U value-1.9-1.3 W/m <sup>2</sup> K, flame resistant, self extinguishing, lead free) comprising uPVC multi-chambered frame, Sash, & Mullion with having wall thickness of 2.3 mm (±0.2 mm) duly reinforced with G.I. section 1.6 mm (±0.2 mm) made from roll forming process of required length. All corners of frame and sash will be fusion welded. mullion (if required) shall be also fusion welded including drilling of holes for fixing hardware's, uPVC extruded glazing beads of appropriate dimension, EPDM gasket, G.I fasteners 100 x 8 mm size for fixing frame to finished wall, plastic packers, plastic caps and necessary stainless steel screws etc. shall be provided in all frame, sash & mullion, wherever necessary. Thereafter, 5 mm clear annealed glass shall be provided in the sash with the help of uPVC glazing bead and hardware, i.e., stainless steel (SS 304 grade) friction hinges & zinc alloy (white powder coated) casement handles (in window) & 3D Hinges & Multipoint Lock (in door) shall be provided. Window frame shall be fixed to the wall with 100mm long and 8mm dia. Fasteners and after fixing frame the gap between frame and adjacent finished wall shall be filled with weather proof silicon sealant over backer rod of required size, of approved quality complete in all respect as per approved drawing &	2	1.2	2.1		5.04	Sqm

Nayan  
30/01/26  
SAE(c)/US

Asst. Engineer (C)  
Uttaran Services Department  
K. M. C.

30/1/26  
Executive Engineer (Civil)  
Uttaran Services Department  
K. M. C.



SL NO.	SCHEDULE	ITEM	NO	LENGTH	BREATH	HEIGHT	QUANTITY	UNIT
81	P.W.D. (Bldg) 2017 Page 291, Item No.18	Supplying, fitting & fixing Stainless Steel 'D' or 'H' type of size 300 mm x 19 mm tubular Handle with Grade 304, CE certified, marked & conforming to EN - 1154, of approved quality of reputed brand as per direction of Engineer-in-Charge fitted and fixed complete including all incidental charges.	4				4	Each
82	K.M.C. FAIR RATE approved by D.G.(Bustee), dt-20.10.14	Decorative relief work of artistic nature on exposed surface of cement concrete, plaster or brick work etc. on the surface sketch drawn by artist including preparing the base by rough plaster of sand, cement (1:3) with water proofing compound including oil paint (Two Coats of approved shade, colour over a coat of primer) and applying two coats of decorative cement based paint to the rest portion of the back and other miscellaneous work complete including all materials, labours, scaffolding etc. as per direction of Engineer-in-Charge.	1	2.75	5.7		15.68	
			1	4.425	2.75		12.17	
			1	3	1.75		5.25	
							33.1	Sqm
83	P.W.D. (Bldg) 2017 Page -250,Item No. 27	Providing and fixing exterior quality Aluminium Composite Panel (ACP)wall cladding on existing Al /MS frame work with GI brackets, ACP fixed on the existing frame work by folding the edges of ACP panel (Engraving the rear surface of ACP sheet) with CP angles, cleats and stainless Steel screws forming grooves at the periphery of ACP panel. Such grooves filled with foam and silicon sealant etc. complete with all materials (but including the cost of silicon sealant), labour, scaffolding and all other incidental charges complete in all respect as per specification and direction of Engineer-in-charge. (Mode of payment is on finished surface area of ACP) (b) 4mm thick (0.50mm Al +3.0mm LDPE +0.50mm Al PVDF coating)	1	3	0.8		2.4	
			2	5.4	0.6		6.48	
							8.88	Sqm
84	Sanitary & Plumb 2017 Page- 88, Item No. Iv-A	Construction of septic tank of different capacities as per approved drawing with 1st class brick work in cement mortar (1:4) including two 560mm dia R.C.C. manhole cover (heavy type) of approved make supplied, fitted and fixed in the 100mm thick R.C.C (1 : 1.5 : 3) top slab with necessary fittings, 20mm thick cement plaster (4:1)with neat cement finish to the internal surfaces and 15mm thick cement plaster (4:1) to outside wall upto 200mm below G.L. floor finished with 25mm thick grey artificial stone over 100mm thick R.C.C (1 : 1.5 :3) bottom slab including supplying, fitting, and fixing all necessary specials, fittings, S.W. tees, C.I foot rest etc. including excavation earth in all sorts of soil, shoring, bailing out and pumping out water as necessary, ramming, dressing the bed and refilling the sides of the tanks with earth, removing spoils, filling up the chamber with clear water, removing foreign materials from the chamber and including, constructing attached inspection pit as per approved drawing and connecting all necessary pipes, joints etc. with internal plaster work and artificial stone flooring is to be done with admixture of water proofing compound @5% by weight of cement with all costs of labour and materials. (v) For 50 users A) With Pakur variety. (SAIL/TATA/RINL)	1				1	EACH
85	PWD.SANITARY AND PLUMBING 2017 80-B-B(III)-(a).6.(i)	Supplying, fitting and fixing Flat back urinal (half stall urinal) in white vitreous chinaware of approved make in position with brass screws on 75 mm X 75 mm X 75 mm wooden blocks complete.(i) 635 mm X 395 mm X 420 mm	5				5	EACH
86	PWD.SANITARY AND PLUMBING 2017 81-B-B(III)-(a).12.(b)	Supplying, fitting and fixing urinal flush pipe fittings of approved brand.(b) C.P. urinal flush pipe fittings range of two	5				5	EACH

Navar  
30/01/26  
SAEG/105

30/01/26

Asst. Engineer (C)  
Uttaran Services Department  
K. M. C.

30/01/26  
Executive Engineer (Civil)  
Uttaran Services Department  
K. M. C.

30/01/26  
Dy. Chief Engineer (Civil)  
Uttaran Services Department  
K. M. C.

30/01/26  
D. G.  
Uttaran Services Department  
K. M. C.



CONSTRUCTION OF PAY & USE TOILET AT NETAJI NAGAR NARKELBAGAN MORE IN WD-98,BOROUGH-X

Abstract Estimate(Civil)

SL NO.	SCHEDULE	ITEM	TOTAL QTY	UNIT	RATE	AMOUNT
1	PWD.BLDG SCHEDULE_WEF 01.11.2017 1- 1.(A) 2(a)	Earth work in excavation of foundation trenches or drains, in all sorts of soil (including mixed soil but excluding laterite or sandstone) including removing, spreading or stacking the spoils within a lead of 75 m. as directed. The item includes necessary trimming the sides of trenches levelling, dressing and ramming the bottom, bailing out water as required complete. (a) Depth of excavation not exceeding 1,500 mm.	0.43	%M3	11,927.00	5128.61
2	PWD BLDG SCHEDULE_WEF 01.11.2017 1- 1.(A) 3(a)	Earth work in filling in foundation trenches or plinth with good earth, in layers not exceeding 150 mm. including watering and ramming etc. layer by layer complete. (Payment to be made on the basis of measurement of finished quantity of work) (a) With earth obtained from excavation of foundation.	0.07	%M3	7,754.00	542.78
3	P.W.D. (Bldg) 2017,5th Corr 16.04.2019 Page 2, Item 1	Filling in foundation or plinth by silver sand in layers not exceeding 150 mm. As directed and consolidating same by thorough saturation with water ramming complete including the cost of supply of sand. (Payment to be made on measurement of finished quantity)	0.09	%M3	131714.00	11854.26
4	P.W.D. (Bldg) 2017 ,3rd corr. 04.06.2018,p-1	BRICK WORKS 1. Single Brick Flat Soling of picked jhama bricks including ramming and dressing bed to proper level and filling joints with local sand.	119.99	SQM	361.00	43316.39
5	P.W.D. (Bldg) 2017 ,3rd corr. 04.06.2018,p-10	Cement concrete with graded jhama khoa (30 mm size) excluding shuttering in ground floor and foundation (a) 1:3:6 proportion	13.32	M3	4,761.00	63416.52
6	P.W.D. (Bldg) 2017 3rd corr. 04.06.2018,p-1,i-3	Brick work with 1st class bricks in cement mortar (1:4) (a) in foundation and plinth	7.94	M3	5,682.00	45115.08
7	P.W.D. (Bldg) 2017 3rd corr. 04.06.2018,p-18,i-46	25mm. Thick damp proof course with cement concrete with stone chips (1:1:5:3) [with gradedstone aggregate 10 mm nominal size] and admixture of water proofing compound as per manufacture's specification followed by two coat of polymer based paint, (1st coat after 4 to 5 days of concrete laying and 2nd coat just before brick masonry work) as directed (cost of water proofing compound & polymer based paint to be paid separately). (Chequering not required over concrete or painted surface.)	10.35	SQM	190.00	1966.5
8	P.W.D. (Bldg) 2017 3rd corr. 04.06.2018,p-1,i-3	Brick work with 1st class bricks in cement mortar (4:1) b) in Superstructure & ground floor.	35.46	M3	5905.00	209391.3
9	P.W.D. (Bldg) 2017 3rd corr. 04.06.2018,p-3,i-8	125 mm. thick brick work with 1st class bricks in cement mortar (1:4) in ground floor.	246.23	SQM	736.00	181225.28
10	KMC CONSOLIDATE D RATE CIVIL_2018 2- 2/b	Ordinary cement concrete(mix 1:1:5:3) with graded stone chips (20 mm. nominal size)excluding shuttering and reinforcement, if any, in ground floor as per IS codes. a) Pakur / Chandil Variety	24.97	M3	6,047.00	150993.59
11	KMC CONSOLIDATE D RATE ROADS_2018 BASED ON P.W.D. SCHEDULE W.E.F. 1.11.2017 1-35	Reinforcement for reinforced concrete work in all sorts of structures including distribution bars, stirrups, binders etc initial straightening and removal of loose rust (if necessary), cutting to requisite length, hooking and bending to correct shape, placing in proper position and binding with 16 gauge black annealed wire at every intersection, complete as per drawing and direction. (a) For works in foundation and upto roof of ground floor/upto 4 m (i) Tor steel/Mild Steel I. SAIL/TATA/RINL,For 1st floor	2.16	MT	54,955.63	118704.16
12	PWD.BLDG SCHEDULE_WEF 01.11.2017 42- 1(C).B. 36(a)	Hire and Labour charges for shuttering with centering and necessary staging upto 4m using approved stout, props and thick hard wood planks of approved thickness with required bracing for concrete slabs, beams, columns lintels, curved or straight including fitting, fixing and striking out after completion of works (upto roof of ground floor). 25 mm to 30 mm thick wooden shuttering as per decision & direction of Engineer-in-charge.	236.83	SQM	335.00	79338.05
13	P.W.D. (Bldg) 2017,3rd corr. 04.06.2018,p-50,i-1	1.Plaster (to wall, floor, ceiling etc.) with sand and cement mortar including rounding off or chamfering corners as directed and raking out joints including throating, nosing and drip course, scaffolding/staging where necessary (Ground floor). [Excluding cost of chipping over concrete surface](ii) With 1:4 cement mortar (a) 20 mm thick plaster	210.13	SQM	175.00	36772.75
14	P.W.D. (Bldg) 2017 ,3rd corr. 04.06.2018,p-50,i-1	Plaster (to wall, floor, ceiling etc.) with sand and cement mortar including rounding off or chamfering corners as directed and raking out joints including throating, nosing and drip course, scaffolding/staging where necessary (Ground floor).[Excluding cost of chipping over concrete surface](ii) With 1:4 cement mortar (b) 15 mm thick plaster	214.11	SQM	151.00	32330.61

Nashar  
03/01/26  
SAE(c) / us

Assy Engineer (C)  
Uttaran Services Department  
K. M. C.

3/1/26  
Executive Engineer (Civil)  
Uttaran Services Department  
K. M. C.

SL NO.	SCHEDULE	ITEM	TOTAL QTY	UNIT	RATE	AMOUNT
15	P.W.D. (Bldg) 2017 .3rd corr. 04.06.2018,p-50,1-1(ii)c	Plaster (to wall, floor, ceiling etc.) with sand and cement mortar including rounding off or chamfering corners as directed and raking out joints including throating, nosing and drip course, scaffolding/staging where necessary (Ground floor) [Excluding cost of chipping over concrete surface](ii) With 1:4 cement mortar (c) 10 mm thick plaster	79.88	SQM	133.00	10524.04
16	P.W.D. (Bldg) 2017 Page 14,Item No. 1,3rd corr. 04.06.2018,p-80,1-1	Supplying and laying true to line and level Anti-Skid, Full Body, Homogeneous & Granular finish Vitrified Tiles conforming to IS:15622-2006 & IS 4457-2007 and testing shall be made in accordance with IS:13630 [Non- modular sizes for tiles with Skid resistance > 0.5, Mohr's hardness > 5.0, Staining resistance Class-1, Water Absorption: E < 0.5%, MDR > 35 N/sq mm in internal area of building e.g Toilet Block, Passage, Corridor, Accessible Open Terrace etc. set in 20 mm sand cement mortar (1:4) and 2 mm thick cement slurry at back side of tiles using cement @ 2.91 Kg /Sq m or using Polymerised Adhesive (6 mm thick layer applied directly over finished artificial stone floor/ Mosaic etc without any backing course) laid after application slurry using 1.75 Kg of cement per Sq m below mortar only, joints grouted with admixture of white cement and colouring pigment to match with colour of tiles/ epoxy grout materials of approved make as directed and removal of wax coating of top surface of tiles with warm water and polishing the tiles using soft and dry cloth upto mirror finish complete including the cost of materials, labour and all other incidental charges complete true to the manufacturer's specification and direction of Engineer-in-Charge. (White cement, synthetic adhesive and grout material to be supplied by the contractor) b) In	58.26	SQM	1589.00	92575.14
17	P.W.D. (Bldg) 2017 .3rd corr 04.06.2018,p-36,1-22	Supplying, fitting & fixing 1st quality Ceramic tiles in walls and floors to match with the existing work & 4 nos. of key stones (10mm) fixed with araldite at the back of each tile & finishing the joints with white cement mixed with colouring oxide if required to match the colour of tiles including roughening of concrete surface, if necessary or by synthetic adhesive & grout materials etc (B) Wall with Sand Cement Mortar (1:3) 15 mm thick & 2 mm thick cement slurry at back side of tiles using cement @ 2.91 Kg/Sq m & joint filling using white cement slurry @ 0.20kg/Sq m. (a) Area of each tile Above 0.09 Sq m (i) Coloured decorative	228.35	SQM	1109.00	253240.15
18	PWD.BLDG SCHEDULE_WEF 01.11.2017 192-1.1.A.15	Neat cement punning about 1.5mm thick in wall, dado, window sill, floor etc. NOTE:Cement 0.152 cu m per100 sq m.	15.69	SQM	34.00	533.46
19	Sanitary & Plumb.2017 Page-79, Item No. 2	Supplying, fitting and fixing E.W.C. in white glazed vitreous chinaware of approved make complete in position with necessary bolts, nuts etc (b) With 'S' trap	2	EACH	1,512.00	3024.00
20	PWD.SANITARY AND PLUMBING 2017 79- B-B(III)-(a).4.(ii)	Supplying, fitting and fixing Orissa pattern water closet in white glazed vitreous chinaware of approved make in position complete excluding 'P' or 'S' trap (excluding cost of concrete for fixing) (ii) 530 mm X 410 mm	2	EACH	1,522.00	3044.00
21	PWD.SANITARY AND PLUMBING 2017,P- 66-B-B(II)- (a)14.(A)(iii)	Supplying,fitting and fixing cast iron 'P' or 'S' trap conforming to I.S. 3989/ 2009 and 1729/ 2002 including lead caulked joints and painting two coats to the exposed surface. (Painting to be paid seperately) (A) 'P' Trap (iii) 100 mm	4	EACH	948.00	3792.00
22	P.W.D. (Bldg) 2017 Page- 195 , Item- 7 (i)	Applying Interior grade Acrylic Primer of approved quality and brand on plastered or concrete surface old or new surface to receive Distemper/ Acrylic emulsion paint including scraping and preparing the surface thoroughly, complete as per manufacturer's specification and as per direction of the EIC. (In Ground Floor)(a) One Coat ii) Solvent based interior grade Acrylic Primer	2.94	%SQ	3,370.00	9907.80
23	P.W.D. (Bldg) 2017 Page- 196 , Item- 10	Acrylic Distemper to interior wall, ceiling with a coat of solvent based interior grade acrylic primer (as per manufacturer's specification) including cleaning and smoothing of surface. Two Coats	293.99	SQM	70.00	20579.30
24	P.W.D. (S&P) 2017 .7th corr. 22.01.2020,p-1,1-1	Constructing Inspection pit of inside measurement 600mm X600mm Xupto 600mm (depth) with 250mm. Thick 1st class brick work in cement mortar (1:4) on all sides, bottom of the pit consisting of 100mm. Thick cement concrete (1:3:6) with stone chips over a layer of Jhama brick flat soling, 15mm. thick(1:4) cement plaster to inside walls and out-side walls upto G.L. and 20mm. thick (1:4) plaster to bottom of the pit, providing necessary invert with cement concrete (1:3:6) with stone chips as per direction, neat cement finishing to entire internal surfaces, top of the pit covered with 100mm. thick R.C.C. slab (1:1.5:3) with stone chips and necessary reinforcement upto 1% and shuttering including 6mm. thick cement plaster (1:4) in all external surfaces of the slab and one 560mm. dia R.C.C. manhole cover of approved make supplied, fitted and fixed in the slab with necessary fittings, necessary earth work in excavation in all sorts of soil, filling sides of the pit with earth and removing spoils after work complete in all respect with all costs of labour and materials. With Pakur variety.	6	EA	7253.00	43518.00

Nandan  
03/01/26  
S (AEC) / US

Asst. Engineer (Civil)  
03/01/26 (C) Utaran Services Department  
K. M. C.



SL NO.	SCHEDULE	ITEM	TOTAL QTY	UNIT	RATE	AMOUNT
25	Sanitary & Plumb. 2017 Page-66, Item No. 16	Supplying, fitting and fixing with cement jointing (3:1) salt glazed stoneware pipe including excavation of earth upto 1.50 metre depth in all sorts of soil both mixed or unmixed and refilling (but excluding concreting at bottom and sides). (iii) 150 mm	24.2	MTR	334.00	8082.80
26	P.W.D. (Bldg) 2017 3rd corr. 04.06.2018, p-18, I-46	Cement concrete (1:1.5:3) with graded stone chips 5.6mm. Size with hexagonal square mesh wire netting I.R.C. Fabric mesh or X.P.M. fitted and fixed after tying the existing reinforcement on concrete without distributing the same and with proper scraping and cleaning the reinforcement and disturbed concrete with wire brush etc. after applying a coat of cement excluding the cost of wire netting I.R.C. or X.P.M. but including cost of all handling and scaffolding complete as per direction of Engineer-in-charge. (a) 37.5mm thick.	40.38	SQM	593.00	23945.34
27	PWD.BLDG SCHEDULE_WEF 01.11.2017 10-1(B) 2(a)	Dismantling all types of plain cement concrete works, stacking serviceable materials at site and removing rubbish as directed within a lead of 75 m in ground floor including roof. (a) upto 150 mm. thick	4.34	M3	939.00	4075.26
28	PWD.BLDG SCHEDULE_WEF 01.11.2017 10-1(B) 1(a)	Dismantling all types of masonry excepting cement concrete plain or reinforced, stacking serviceable materials at site and removing rubbish as directed within a lead of 75 m. (a) In ground floor including roof.	11.58	M3	447.00	5176.26
29	PWD.BLDG SCHEDULE_WEF 01.11.2017 10-1(B) 3(a)	Dismantling R.C. floor, roof, beams etc. including cutting rods and removing rubbish as directed within a lead of 75 m. including stacking of steel bars. (a) In ground floor including roof	3.02	M3	1956.00	5907.12
30	P.W.D. (Bldg) 2017 Page 47, Item No. 3	Supplying and laying polythene sheet (150gm/sqm.) over damp proof course or below flooring or roof terracing or in foundation trenches.	240.24	SQM	24.00	5765.76
31	PWD.BLDG SCHEDULE_WEF 01.11.2017 107-19B	Supplying fitting and fixing steel rolling grills link type, shutter with 18 B.G. of approved type steel to the section 75mm wide, fitted with coil wire spring to necessitate the fitting of required Nos. of C.I. Pulleys on heavy type solid drawn seamless steel tube complete with locking arrangements both inside and outside specially built up side guide channels including providing a hood for the steel rolling shutter in the room, painting two coats of approved aluminium paint over a coat of red lead primer complete.	6.3	SQM	2833.00	17847.90
32	P.W.D. (Bldg) 2017 Page 104, Item No. 13	(a) M.S. or W.I. Ornamental grill of approved design joints continuously welded with M.S. W.I. Flats and bars of windows, railing etc. fitted and fixed with necessary screws and lugs in ground floor. (ii) Grill weighing above 16 Kg./sq.mtr and above	8	QTL	7,046.00	56368.00
33	PWD.BLDG SCHEDULE_WEF 01.11.2017 192-1.1.B.1	Labour for Chipping of concrete surface before taking up Plastering work	90.5	SQM	21.00	1900.50
34	P.W.D. (S&P) 2017 ,7th corr. 22.01.2020, p-1, I-1	Constructing Inspection pit to a depth of 1.5 metre (inside), 250 mm thick 1st class brick work (1:4) in all sides over a layer of jhama brick soling and 150 mm thick cement concrete with stone chips (1:3:6) including necessary earth work, fitting and fixing approved type S.W. master trap, constructing masonry invert with cement concrete (1:1.5:3) with stone chips, plastering inside and outside (outside upto 300 mm below G.L.) with 20 mm thick cement plastering (1:4) and neat cement punning, including supplying, fitting and fixing one 560 mm. dia R.C.C. manhole cover of approved make with R.C.C. slab of 100 mm thick with cement concrete (1:1.5:3) with stone chips including necessary reinforcement (upto 1%) and shuttering and necessary corbelling brick work (1:4) so that the R.C.C. cover slab rests 150 mm above adjacent G.L., cement plaster (1:4) 10 mm thick on all external surfaces of the top slab as directed complete in all respect and removal of surplus earth with all costs of labour and materials (excluding the cost of master trap only) (i) 900 mm X 750 mm (inside) chamber including fitting and fixing S.W. master trap of 150 mm dia. of approved make A) With Pakur variety (SAIL/TATA/RINL)	1	EA	11,959.00	11959.00
35	PWD.SANITARY AND PLUMBING 2017 93-B.B.IV.9.a(ii)	Supplying, fitting and fixing in position C.I. manhole/ pit cover with rim (a) Round (ii) 450 mm X 100 mm X 25 kg (approx.)	1	EA	2,035.00	2035.00
36	P.W.D. (Bldg) 2017 Page-200/ itm. 1(a)	(a) Priming one coat on steel or other metal surface with synthetic oil bound primer of approved quality including smoothing surfaces by sand papering etc.	36.36	SQM	29.00	1054.44
37	P.W.D. (Bldg) 2017 Page-201/ itm. 2(b), (iv)	(A) Painting with best quality synthetic enamel paint of approved make and brand including smoothing surface by sand papering etc. including using of approved putty etc. on the surface, if necessary : (b) On steel or other metal surface : With super gloss (hi-gloss) - (iv) Two coats (with any shade except white)				

Navin  
 03/01/26  
 SAE(C) IUS  
 3/1/26  
 Executive Engineer (Civil)  
 Ass. Engineer (C)  
 Uttaran Services Department  
 Uttaran Services Department

SL NO.	SCHEDULE	ITEM	TOTAL QTY	UNIT	RATE	AMOUNT
			36.36	SQM	79.00	2872.44
38	PWD.SANITARY AND PLUMBING 2017 29-(A) (A)-(III) (a) 1(a)(i)	Supplying, fitting and fixing CPVC (Chlorinated Polyvinyl Chloride) pipes of approved make conforming to IS-15778: 2007 . with all necessary accessories, specials viz (a) For Exposed Work (i) CPVC Pipes Class-1, SDR-11 (Dia) 25 MM	25	MTR	208.00	5200.00
39	PWD.SANITARY AND PLUMBING 2017 29-(A) (A)-(III) (a) 1(a)(i)	Supplying, fitting and fixing CPVC (Chlorinated Polyvinyl Chloride) pipes of approved make conforming to IS-15778: 2007 . with all necessary accessories, specials viz (b) For Concealed Work (i) CPVC Pipes Class-1, SDR-11(Dia) (a)15mm	45.6	MTR	140.00	6384.00
40	PWD.SANITARY AND PLUMBING 2017 29-(A) (A)-(III) (a) 1(a)(ii)	Supplying, fitting and fixing CPVC (Chlorinated Polyvinyl Chloride) pipes of approved make conforming to IS-15778: 2007 . with all necessary accessories, specials viz (b) For Concealed Work (i) CPVC Pipes Class-1, SDR-11(Dia) (a)20mm	57.00	MTR	171.00	9747.00
41	PWD.SANITARY AND PLUMBING 2017 3-A (A)-(II) 3.(a) (i)	Supplying, fitting and fixing shower of approved brand and make. (a) (i) Chromium plated round shower with revolving joint 100 mm dia with rubid cleaning system (Equivalent to Code No. 542(N) & Model - Tropical / Sumthing Special of ESSCO or similar brand).	2	EA	452.00	904.00
42	PWD.SANITARY AND PLUMBING 2017 5-A (A)-(II) 5.(vii)	Supplying, fitting and fixing gunmetal wheel valve of approved brand and make tested to 21 kg per sq. cm. (for water lines only). (vii) 25 mm dia	2	EA	778.00	1556.00
43	PWD.SANITARY AND PLUMBING 2017 6-A (A)-(II) 7. (b) (i)	Supplying, fitting and fixing bib cock or stop cock. (b) (i) Chromium plated Stop Cock (Equivalent to Code No. 513(A) & 513(B) & Model - Tropical / Sumthing Special of ESSCO or similar	8	EA	493.00	3944.00
44	PWD.SANITARY AND PLUMBING 2017 36-(A) (A)-(IV)-2	Supplying, fitting and fixing 10 litre P.V.C. low-down cistern conforming to I.S. specification with P.V.C. fittings complete, C.I. brackets including two coats of painting to bracket etc.	4	EA	1015.00	4060.00
45	PWD S&P-2017, Page -37 (I.No -6(b)	Supplying P.V.C. water storage tank of approved quality with closed top with lid (Black) - Multilayer capacity. (d) 1000 litre	1	EA	5,128.00	5128.00
46	P.W.D. (S&P) 2017 P-37 It.-10(A)	Labour for hoisting plastic water storage tank. (i) Upto 1500 litre capacity (a) Upto 1st story from G.L	1	EA	96.00	96.00
47	PWD.SANITARY AND PLUMBING 2017 38-A-A-IV-13	original works 13 Labour for punching hole in plastic water storage tank upto 50 mm dia.	2	EA	19.00	38.00
48	PWD.SANITARY AND PLUMBING 2017 41-A-A-V-41(1)a)iii	Original Works 1 Wash basin vitreous china of approved make (without fittings) supplied, fitted and fixed in position on 75mm X 75 mm X 75 mm wood blocks and C.I. brackets including two coats of painting of C.I. brackets (iii) 630 mm X 450 mm size	4	EA	2,435.00	9740.00
49	PWD.SANITARY AND PLUMBING 2017 80-7	Supplying, fitting and fixing Squating plate with integral flushing in white vitreous chinaware of approved make in cement concrete (6.3.1) with jhama chips complete. (Payment of concrete will be paid seperately) (i) 450 mm X 350 mm	1	EA	881.00	881.00
50	PWD.BLDG SCHEDULE_WEF 01.11.2017 63-1(D) A 34 (a)	Supplying, fitting & fixing granite slab 15mm to 18mm thick in floor, lobby, stair, landing and treads etc. over 20mm (avg) thick base of cement mortar (1.2) laid with white cement slurry @ 4.40Kg per Square meter before placing of granite and jointed with white cement slurry @ 2.0 Kg per square meter with necessary pigments and complete as per direction of Engineer-in-charge including cost of all materials, labours, curing and roughening of concrete surface complete. In ground floor (a) Area of each Granite slab upto 0.60 Square meter.	19.19	SQM	2,173.00	41699.87
51	PWD.SANITARY AND PLUMBING 2017 82-B-B(III)-(a).19	Supplying, fitting and fixing best quality Indian make mirror 5.5 mm thick with silvering as per I.S.I. specifications supported on fibre glass frame of any colour, frame size 550 mm X 400 mm	5	EA	613.00	3065.00
52	PWD.SANITARY AND PLUMBING 2017 82-B-B(III)-(a).18. (a)	Supplying, fitting and fixing soap holder. (a) PTMT (Prayag or equivalent)	12	EA	135.00	1620.00
53		Supplying, fitting and fixing shower of approved brand and make (f) Hand Shower(Health Faucet) with 1mtr Flexible Tube with Wall Hook(Equivalent to Code No.573 & Model -ALLIED of Jaquar or similar).	2	EACH	1251.00	2502.00

Nandan  
 03/01/26  
 SAE(C)/US  
 Assst. Engineer (C)  
 Utaran Services Department  
 K. M. C.

3/1/26  
 Executive Engineer (Civil)  
 Utaran Services Department  
 K. M. C.

Sl. NO.	SCHEDULE	ITEM	TOTAL QTY	UNIT	PRICE	AMOUNT
54	PWD SANITARY AND PLUMBING 2017 B2-B-8(III)-(a) 22.(a)(ii)	Supplying, fitting and fixing towel rail with two brackets.(a) C.P. over brass (ii) 25 mm dia. and 600 mm long	9	EA	430.00	3870.00
55	PWD BLDG SCHEDULE_WEF 01.11.2017 63-1(D)A 34 (a)	Supplying and laying true to line and level Anti-Skid, Full Body, Homogeneous & Granular finish Vitrified Tiles conforming to IS-15622-2006 & IS 4457-2007 and testing shall be made in accordance with IS-13630 [Non-modular sizes for tiles with Skid resistance > 0.5, Mohr's hardness > 5.0, Staining resistance: Class-1, Water Absorption: E < 0.5%, MOR > 35 N/sq.mm in internal area of building & g. Toilet Block, Passage, Corridor, Accessible Open Terrace etc. set in 20 mm sand cement mortar (1:4) and 2 mm thick cement slurry at back side of tiles using cement @ 2.91 Kg./sqm or using Polymerized Adhesive (6 mm thick layer applied directly over finished artificial stone floor/ Mosaic etc without any backing course) laid after application slurry using 1.75 Kg of cement per Sqm below mortar only. joints grouted with admixture of white cement and colouring pigment to match with colour of tiles/ epoxy grout materials of approved make as directed and removal of wax coating of top surface of tiles with warm water and polishing the tiles using soft and dry cloth upto mirror finish complete including the cost of materials, labour and all other incidental charges complete true to the manufacturer's specification and direction of Engineer-in-Charge. (White cement, synthetic adhesive and grout material to be supplied by the contractor). a) In Ground Floor: Sizes-300 mm x300mm x10 mm with breaking strength >	36	SQM	897.00	32292.00
56	PWD BLDG_SCHD_2 017_3rd CORR, 4.6.2018,P.26-1(D)A (20)	Supplying, fitting and fixing 18 mm. to 22 mm. thick kota stone slab in wall, dado in 15 mm thick [avg] cement mortar (1:3) including making suitable arrangement to hold the stone properly by brass / copper hooks including pointing in cement mortar	12.18	SQM	1,160.00	14128.80
57	PWD SANITARY AND PLUMBING 2017 19-A.(A)-(ii) 20. A. (d)	Supply of High Density Poly-ethylene Pipe conforming to IS - 4984 - 1985 (Dia) [PE - 63] A. 6 Kg / Sq.Cm. (Working Pressure) (Dia) (d) 75 mm	12.4	MTR	248.00	3075.20
58	PWD BLDG SCHEDULE_WEF 01.11.2017 196-1.1.A.B(a)	Applying Exterior grade Acrylic primer of approved quality and brand on plastered or concrete surface old or new surface to receive decorative textured (matt finish) or smooth finish acrylic exterior emulsion paint including scraping and preparing the surface thoroughly, complete as per manufacturer's specification and as per direction of the EIC	2.10	%SQ	3,140.00	6594.00
59	PWD BLDG SCHEDULE_WEF 01.11.2017 197-1.1.A.17(ii)	Protective and Decorative Acrylic exterior emulsion paint of approved quality, as per manufacturer's specification and as per direction of Engineer-in-Charge to be applied over acrylic primer as required. The rate includes cost of material, labour, scaffolding and all incidental charges but excluding the cost of primer. In Ground floor (Two Coat) a) Normal Acrylic Emulsion	210.13	SQM	67.00	14078.71
60	PWD BLDG SCHEDULE_WEF 01.11.2017 115-1(G) A. 3 (i)	Supplying, fitting and fixing fibre reinforced polymer (FRP) Composite door frame as per approved section with glass fibre reinforced plastic moulded skins and a special sandwich core, so as to impart monolithic composite structure as per approved technology of Department of Science and Technology (DST) to satisfy IS: 4020 door testing performance criteria (i) 66mm x 90mm	64.35	MTR	497.00	31981.95
61	PWD BLDG SCHEDULE_WEF 01.11.2017 125-1(G) B. 14 (i)	Supplying, fitting & fixing fibre reinforced polymer (FRP) Composite door shutters as per approved design with glass fibre reinforced plastic moulded skins and a special sandwich core, so as to impart monolithic composite structure as per approved technology of Department of Science and Technology (DST) to satisfy IS:4020 door testing performance criteria. In ground floor (i) 32 mm thick	20.48	SQM	2,763.00	56586.24
62	P.W.D. (Bldg) 2017 Page 145, Item No. 29	Anodised aluminium butt hinges of approved quality manufactured from extruded section conforming to IS specification (I.S. 205/66) and fitted and fixed with cadmium plated screws: 75 x 45 x 2.5mm	39		52.00	2028.00
63	P.W.D. (Bldg) 2017 Page 144, Item No. 26	Anodised aluminium barrel/tower/socket bolt(full covered) of approved manufactured from extruded section conforming to I.S. 204/74 fitted and fixed with cadmium plated screws: 100mm long x 10mm dia bolt	26		53.00	1378.00
64	P.W.D. (Bldg) 2017 Page 146 It.no- 33, a (i)	Anodised aluminium grip handle with base plate of approved quality fitted and fixed complete. (i) 165mm grip x 12mm dia rod x 42mm plate x 3.2mm thick. (a) With base plate.	26		147.00	3822.00
65	PWD BLDG SCHEDULE_WEF 01.11.2017 109-1(F) A. 22	Supplying, fitting and fixing Stainless Steel railing consist of 38mm dia and 900mm height vertical balustrade at every two alternative steps, 50mm dia top rail, 3 (three) nos 19mm dia horizontal Stainless steel pipe and base/cover plate with Stainless Steel GRADE 304	5.70	MTR	5,974.00	34051.80
66	PWD SANITARY AND PLUMBING 2017 B1-B-8(III)-(a).12.(b)	Supplying, fitting and fixing urinal flush pipe fittings of approved brand (b) C.P. urinal flush pipe fittings range of two	5	EACH	917.00	4585.00

Nataraj  
 SAE(C) IUS  
 03/01/26

3/11/26  
 Executive Engineer (Civil)  
 Uttaran Services Department  
 K. M. C.

Ass: Engineer (C)  
 Uttaran Services Department

SL NO.	SCHEDULE	ITEM	TOTAL QTY	UNIT	RATE	AMOUNT
67	PWD.BLDG SCHEDULE_WEF 01.11.2017 198- 1.J.B.5(a)	Rendering the Surface of walls and ceiling with White Cement base WATER PROOF wall putty of approved make & brand (1.5 mm thick)	293.99	SQM	122.00	35866.78
68	PWD.SANITARY AND PLUMBING 2017 45- 19-A (i)	Supplying, fitting and fixing pillar cock of approved make. a) (i) CP Pillar Cock - 15 mm. (Equivalent to Code No. 507 & Model - Tropical / Sumthing Special of ESSCO or similar brand).	4	EACH	555.00	2220.00
69	PWD.SANITARY AND PLUMBING 2017 6-7 b (i)	Supplying, fitting and fixing bib cock or stop cock (b) (i) Chromium plated Stop Cock (Equivalent to Code No. 513(A) & 513(B) & Model - Tropical / Sumthing Special of ESSCO or similar	12	EACH	493.00	5916.00
70	PWD.SANITARY AND PLUMBING 2017-7-8 a (i) -7 b (i)	Supplying, fitting and fixing push cock of heavy quality and of approved make and brand. (a) Cast iron (i) 15 mm	5	EACH	201.00	1005.00
71	PWD.BLDG SCHEDULE_WEF 01.11.2017 62-31	Supplying, fitting & fixing granite tiles 10mm to 12mm. thick in columns, wall, fascia etc. with 15 thick [avg] cement mortar (1:2) including making suitable arrangements to hold the stones properly by brass / copper hooks including pointing in cement mortar (1:2) (1 white cement : 2 marble dust) with admixture of pigment matching the stone shades all complete as per direction of the Engineer-in-charge including cost of all materials, labours, scaffolding, staging, curing and roughening of concrete surface complete	29.9	SQM	1,755.00	52474.50
72	PWD.BLDG SCHEDULE_W EF 01.11.2017 234-1(R )1 (A)(i)(K)(i)	Supplying profiles of required section made of Aluminium Alloy Extrusions conforming to IS: 732-1983 and IS: 1285- 1975; Anodized (with required film thickness and specified colour / natural) matt finished conforming to IS: 1868-1983 for fabrication of composid door, sliding & casement windows, partitions, formed of basic sections of any ISI embossed / certified make and brand as per direction of Engineer - InCharge. (Payment will be made on finished length of the work).	14.1	MTR	311.00	4385.10
73	PWD.BLDG SCHEDULE_W EF 01.11.2017 235-1(R )1.(A)(i)(K)(ii)a	Supplying profiles of required section made of Aluminium Alloy Extrusions conforming to IS: 732-1983 and IS: 1285- 1975; Anodized (with required film thickness and specified colour / natural) matt finished conforming to IS: 1868-1983 for fabrication of composid door, sliding & casement windows, partitions, formed of basic sections of any ISI embossed / certified make and brand as per direction of Engineer - InCharge. (Payment will be made on finished length of the work) b) 3-track sliding window ii) Top and side frame	40.50	MTR	270.00	10935.00
74	PWD.BLDG SCHEDULE_W EF 01.11.2017 235-1(R )1.(A)(i)(K)(ii)b	Supplying profiles of required section made of Aluminium Alloy Extrusions conforming to IS: 732-1983 and IS: 1285- 1975; Anodized (with required film thickness and specified colour / natural) matt finished conforming to IS: 1868-1983 for fabrication of composid door, sliding & casement windows, partitions, formed of basic sections of any ISI embossed / certified make and brand as per direction of Engineer - InCharge. (Payment will be made on finished length of the work).	30.00	MTR	117.00	3510.00
75	PWD.BLDG SCHEDULE_W EF 01.11.2017 235-1(R )1.(A)(i)(K)(ii)c	Supplying profiles of required section made of Aluminium Alloy Extrusions conforming to IS: 732-1983 and IS: 1285- 1975; Anodized (with required film thickness and specified colour / natural) matt finished conforming to IS: 1868-1983 for fabrication of composid door, sliding & casement windows, partitions, formed of basic sections of any ISI embossed / certified make and brand as per direction of Engineer - InCharge. (Payment will be made on finished length of the work).Shutter for all track sliding window. iii) Interlock member.	40.8	MTR	148.00	6038.40
76	PWD.BLDG SCHEDULE_W EF 01.11.2017 235-1(R )1.(A)(i)(K)(ii)d	Supplying profiles of required section made of Aluminium Alloy Extrusions conforming to IS: 732-1983 and IS: 1285- 1975; Anodized (with required film thickness and specified colour / natural) matt finished conforming to IS: 1868-1983 for fabrication of composid door, sliding & casement windows, partitions, formed of basic sections of any ISI embossed / certified make and brand as per direction of Engineer - InCharge. (Payment will be made on finished length of the work) h) Louvered window. i) Top, bottom and side member.	38.40	MTR	183.00	7027.20
77	PWD.BLDG SCHEDULE_W EF 01.11.2017 250-1(R )27(b)	Supplying profiles of required section made of Aluminium Alloy Extrusions conforming to IS: 732-1983 and IS: 1285- 1975; Anodized (with required film thickness and specified colour / natural) matt finished conforming to IS: 1868-1983 for fabrication of composid door, sliding & casement windows, partitions, formed of basic sections of any ISI embossed / certified make and brand as per direction of Engineer - InCharge. (Payment will be made on finished length of the work) h) Louvered window. ii) Louvered Section.	19.20	SQ. M	658.00	12633.60
78	PWD.BLDG SCHEDULE_W EF 01.11.2017 243-1(R )9 (iv)	Supplying bubble free float glass of approved make and brand conforming to IS: 2835-1987. iv) 5mm thick coloured / tinted / smoke glass.	16.29	SQ. M	585.00	9529.65

Atankar  
03/01/26  
SAEG/BS

Asst. Engineer (C) 3/11/26  
Uttaran Services Department  
K. M. C.

SL NO.	SCHEDULE	ITEM	TOTAL QTY	UNIT	RATE	AMOUNT
79	PWD.BLDG SCHEDULE_W EF 01.11.2017 233-A 1 h ii))	Supplying profiles of required section made of Aluminium Alloy Extrusions conforming to IS: 732-1983 and IS: 1285- 1975; Anodized (with required film thickness and specified colour / natural) matt finished conforming to IS: 1868-1983 for fabrication of composit door, sliding & casement windows, partitions, formed of basic sections of any ISI iii) Cleat angle ( Non-anodized).	19.2	MTR	263.00	5049.60
80	P.W.D. (Bldg) 2017 Page 297, Item No.26(b)	Providing and fixing of factory made uPVC casement window (White Colour) (U value=1.9-1.3 W/m <sup>2</sup> K, flame resistant, self extinguishing, lead free) comprising uPVC multi-chambered frame, Sash, & Mullion with having wall thickness of 2.3 mm (±0.2 mm) duly reinforced with G.I. section 1.6 mm (±0.2 mm) will be fusion welded mullion (if required) shall be also fusion welded including drilling of holes for fixing hardware's, uPVC extruded glazing beads of appropriate dimension, EPDM gasket, G.I fasteners 100 x 8 mm size for fixing frame to finished wall, plastic packers, plastic caps and necessary stainless steel screws etc. shall be provided in all frame, sash & mullion, wherever necessary. Thereafter, 5 mm clear annealed glass shall be provided in the sash with the help of uPVC glazing bead and hardware, i.e., stainless steel (SS 304 grade) friction hinges & zinc alloy (white powder coated) casement handles (in window) & 3D Hinges & Multipoint Lock (in door) shall be provided. Window frame shall be fixed to the wall with 100mm long and 8mm dia. Fasteners and after fixing frame the gap between frame and adjacent finished wall shall be filled with weather proof silicon sealant over backer rod of required size, of approved quality complete in all respect as per approved	5.04	Sqm	8657	43631.28
81	P.W.D. (Bldg) 2017 Page 291, Item No.18	Supplying, fitting & fixing Stainless Steel 'D' or 'H' type of size 300 mm x 19 mm tubular Handle with Grade 304, CE certified, marked & conforming to EN - 1154, of approved quality of reputed brand as per direction of Engineer-in-Charge fitted and fixed complete including all incidental charges.	4	Each	1571	6284.00
82	K.M.C. FAIR RATE approved by D.G.(Bustee), dt- 20.10.14	Decorative relief work of artistic nature on exposed surface of cement concrete, plaster or brick work etc. on the surface sketch drawn by artist including preparing the base by rough plaster of sand, cement (1:3) with water proofing compound including oil paint (Two Coats of approved shade, colour over a coat of primer) and applying two coats of decorative cement based paint to the rest portion of the back and other miscellaneous work complete including all materials, labours, scaffolding etc. as per direction of Engineer-in-Charge	33.1	Sqm	3281.14	108605.73
83	P.W.D. (Bldg) 2017 Page -250,Item No. 27	Providing and fixing exterior quality Aluminium Composite Panel (ACP) wall cladding on existing Al /MS frame work with GI brackets. ACP fixed on the existing frame work by folding the edges of ACP panel (Engraving the rear surface of ACP sheet) with CP angles, cleats and stainless Steel screws forming grooves at the periphery of ACP panel. Such grooves filled with foam and silicon sealant etc. complete with all materials (but including the cost of silicon sealant), labour, scaffolding and all other incidental charges complete in all respect as per specification and direction of Engineer-in-charge (Mode of payment is on finished surface (b) 4mm area of ACP) thick (0.50mm Al +3.0mm LDPE +0.50mm Al PVDF coating)	8.88	Sqm	2878.00	25556.64
84	Sanitary & Plumb. 2017 Page-88, Item No. iv-A	Construction of septic tank of different capacities as per approved drawing with 1st class brick work in cement mortar (1:4) including two 560mm dia R.C.C manhole cover (heavy type) of approved make supplied, fitted and fixed in the 100mm thick R.C.C (1: 1.5: 3) top slab with necessary fittings, 20mm thick cement plaster (4:1) with neat cement finish to the internal surfaces and 15mm thick cement plaster (4:1) to outside wall upto 200mm below G.L floor finished with 25mm thick grey artificial stone over 100mm thick R.C.C (1: 1.5: 3) bottom slab including supplying, fitting, and fixing all necessary specials, fittings, S.W. tees, C.I foot rest etc. including excavation earth in all sorts of soil, shoring, bailing out and pumping out water as necessary, ramming, dressing the bed and refilling the sides of the tanks with earth, removing spoils, filling up the chamber with clear water, removing foreign materials from the chamber and including, constructing attached inspection pit as per approved drawing and connecting all necessary pipes, joints etc. with internal plaster work and artificial stone flooring is to be done with admixture of water proofing compound @5% by weight of cement with all costs of labour and materials (v) For 50 users A) With Pakur variety. (SAIL/TATA/RINL)	1	EACH	89,051.00	89051.00
85	PWD.SANITARY AND PLUMBING 2017 80- B-B(III)-(a).6.(i)	Supplying, fitting and fixing Flat back urinal (half stall urinal) in white vitreous chinaware of approved make in position with brass screws on 75 mm X 75 mm X 75 mm wooden blocks complete (i) 635 mm X 395 mm X 420 mm	5	EACH	2,869.00	14345.00
86	PWD.SANITARY AND PLUMBING 2017 81-B- B(III)-(a).12.(b)	Supplying, fitting and fixing urinal flush pipe fittings of approved brand (b) C.P urinal flush pipe fittings range of two	5	EACH	917.00	4585.00
					TOTAL	2321609.64
					ADD 18% GST	417890
					SUB TOTAL	2739499.64
					ADD 1% CESS	27395
					TOTAL	2766894.64
					SAY	2766895

Nankar  
30/10/26  
SAEN/US

B. E. C.  
30/10/26  
Asst. Engineer (C)  
Uttaran Services Department  
K. M. C.

S. S. S.  
30/11/2026

Executive Engineer (Civil)  
Uttaran Services Department  
K. M. C.

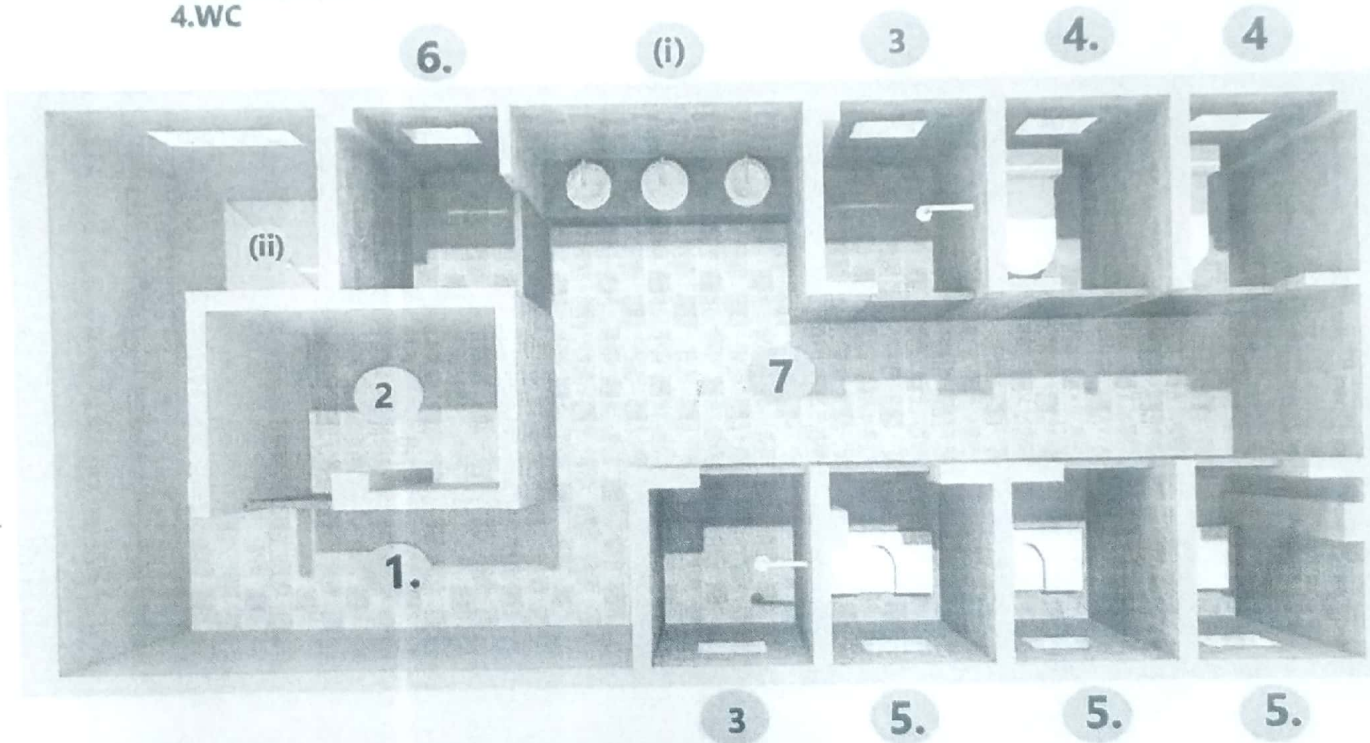
Uttaran Services Department  
30/11/26  
Dy. Chief Engineer (CIVIL)  
Uttaran Services Department  
K. M. C.



- 1.LOBBY
- 2.BABY CARE ROOM
- 3.SHOWER ROOM
- 4.WC

- 5.URINALS
- 6.CHANGIN GROOM
- 7.WET ZONE

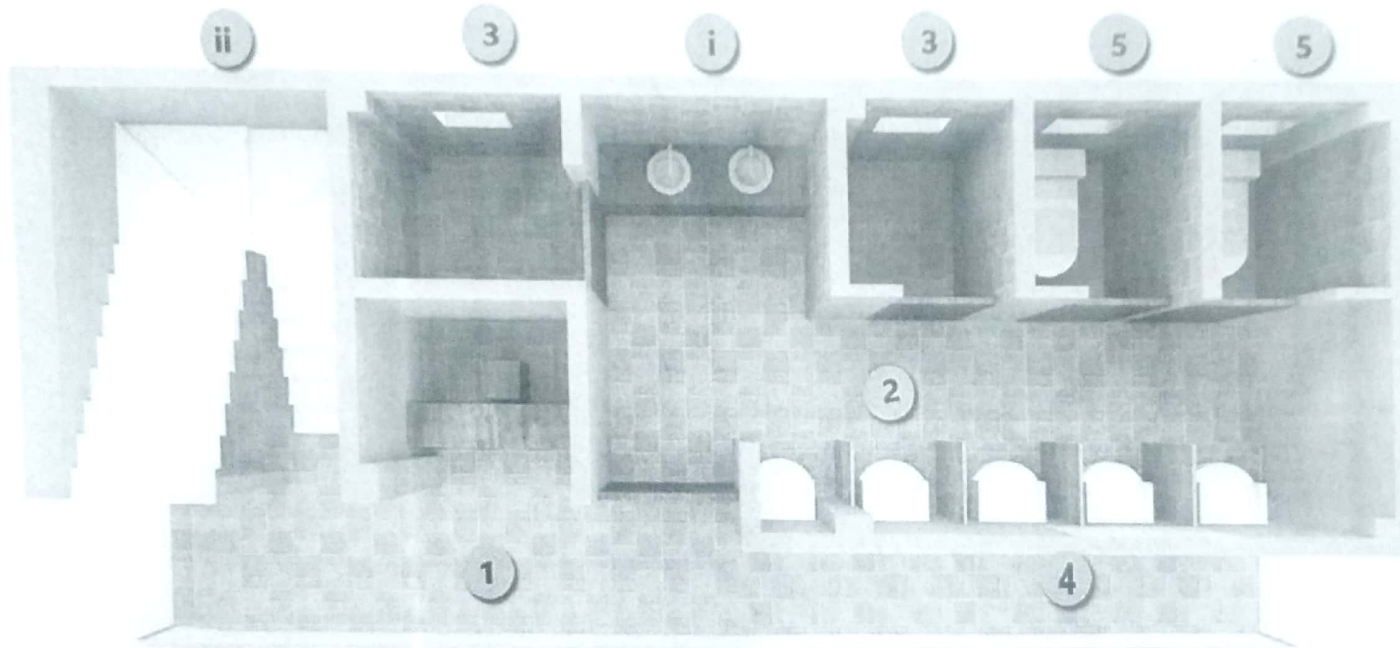
- (i)WASH
- (ii)STAIR



PROPOSED TOILET AT BAGHAJATIN, KOLKATA  
 ARCHITECT - BUILDARK  
 FLAT NO - G1, 22/18, BRINDABAN MULLICK LANE,  
 KADAMTALA, HOWRAH

- 1.LOBBY
- 2.WET ZONE
- 3.SHOWER ROOM
- 4.URINALS
- 5.WC

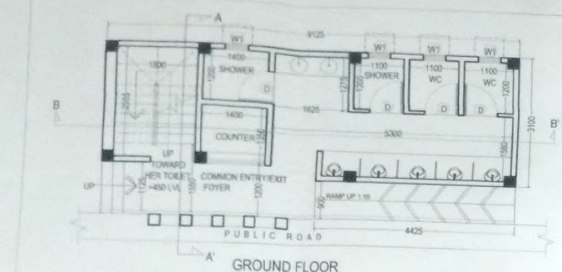
- (i) WASH BASIN
- (ii)STAIR



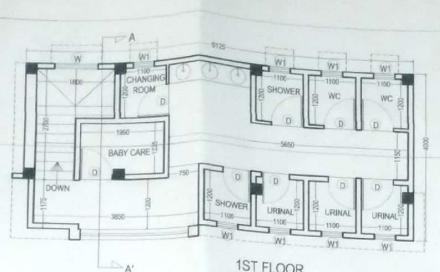
PROPOSED TOILET AT BAGHAJATIN, KOLKATA  
ARCHITECT - BUILDARK  
FLAT NO - G1, 22/18, BRINDABAN MULLICK LANE  
KADAMTALA, HOWRAH



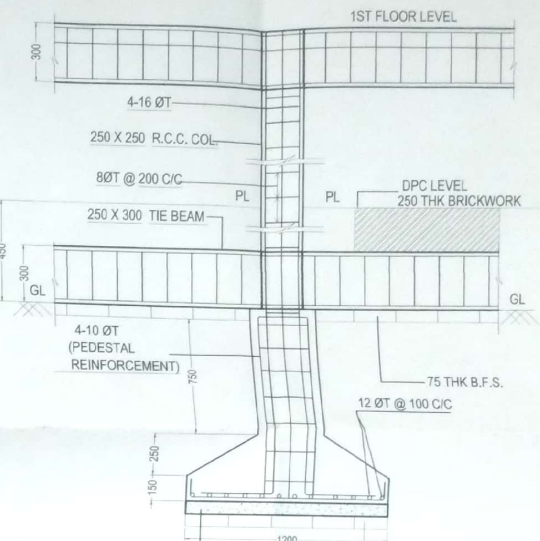
PROPOSED TOILET AT BAGHAJATIN, KOLKATA  
ARCHITECT - BUILDARK  
FLAT NO - G1, 22/18 BRINDABAN MULLICK LANE  
KADAMTALA, HOWRAH



GROUND FLOOR

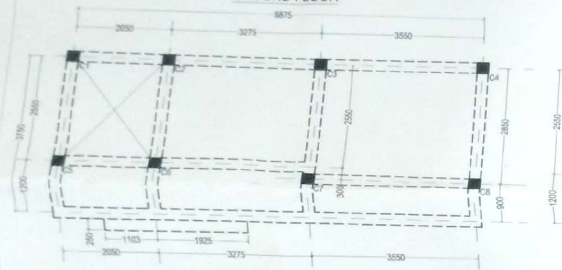


1ST FLOOR

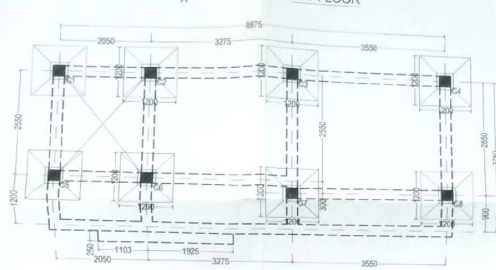


1ST FLOOR LEVEL

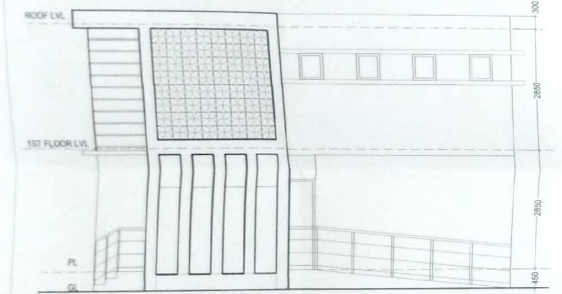
SECTION ON C - D



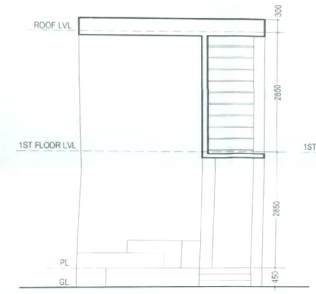
FRAMING PLAN



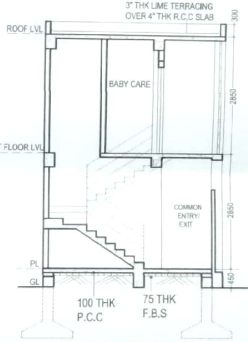
FOUNDATION LAYOUT



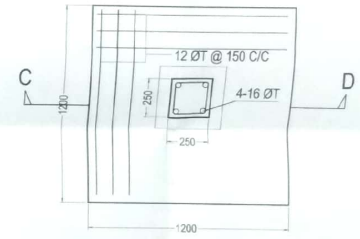
FRONT ELEVATION



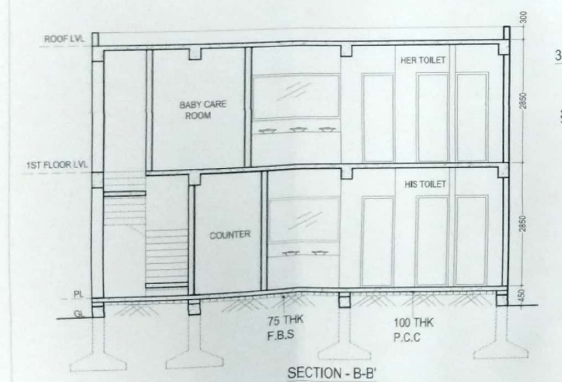
SIDE ELEVATION



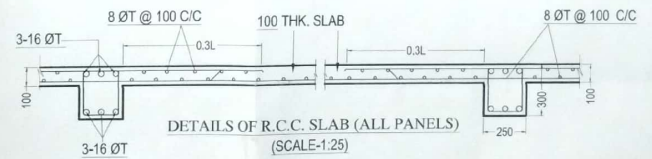
SECTION - A-A'



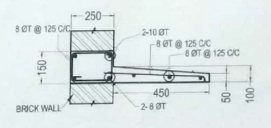
DETAILS OF R.C.C. COL. WITH FOUNDATION COL., MKD C-2, FOOTING MKD F-1 SCALE - 1:25



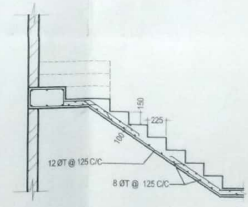
SECTION - B-B'



DETAILS OF R.C.C. SLAB (ALL PANELS) (SCALE:1:25)



DETAILS OF R.C.C. LINTEL & CHAJJA (SCALE:1:25)



DETAILS OF R.C.C. STAIR (SCALE:1:50)

- # FIRST CLASS CEMENT WORK IN SUPER STRUCTURE (1:4)
  - # LC 1:3:6 WITH 20mm DOWN GRADED STONECHIPS.
  - # R.C.C. 1:1.5:3 FOR ROOF, SLAB, LINTEL, BEAM, COLUMN ETC. (M-20)
  - # CEMENT-SAND PLASTER 15mm THK. ON INSIDE & OUT SIDE WALL & 10mm ON CEILING & CHAJJA
  - # 75 THK SINGLE LAYER B.F.S. IN FOUNDATION AND FLOORING.
  - # SANITARY PLUMBING FITTINGS & FIXING COMPLETE AS PER DIRECTION.
  - # ALL OUT SIDE WALL 250 mm. THK AND INSIDE WALL 125 mm. THK
  - # MATERIAL TO BE USED - STONE CHIPS- 19mm DOWN GRADED. CEMENT ORDINARY PORTLAND. SAND - MEDIUM COARSE.
  - # CLEAR COVER - COLUMN & FOUNDATION-40mm, BEAM - 25mm SLAB - 15mm.
  - # M.S. TOR BAR (Fe-415) USED IN ALL TYPE OF R.C.C. WORK.
- SCHEDULE OF DOORS & WINDOWS -
- | MKD | SIZE (MM)  | SHUTTER THK | TYPE OF SHUTTER | MMD       | SIZE (MM)   | SHUTTER THK | TYPE OF SHUTTER    |
|-----|------------|-------------|-----------------|-----------|-------------|-------------|--------------------|
| D   | 750 X 2100 | 38 mm       | PANEL DOOR      | W         | 1500 X 1300 | 38 mm       | FIXED GLASS WINDOW |
|     |            |             | W1              | 500 X 600 | 38 mm       |             | FIXED GLASS WINDOW |

AREA STATEMENTS -

PROP. COVERED AREA	- 36.5 SQM.
PROP. HIGHT OF BUILDING	- 2.85 M

NOTE :- ALL THE DIMENSIONS ARE IN MM. UNLESS OTHERWISE STATED. ALL SCALE ARE IN 1:1 UNLESS OTHERWISE STATED.

TITLE :- ARCHITECTURAL PLAN  
FLOOR PLAN, ROOF PLAN, SECTION,  
STRUCTURAL DETAILS, FRAMING PLAN  
AND FOUNDATION PLAN.

PROPOSED TOILET AT BAGHAJATIN, KOLKATA  
  
DRAWING AND DESIGN FOR CONSTRUCTION  
OF PAY AND USE TOILET FOR THE HOLISTIC  
DEVELOPMENT OF EMBYPASS UNDER  
BUSTEE SERVICES DEPARTMENT.

KRISHNENDU GHOSH  
REGD. NO. - CA/2004/2850  
NAME OF L.B.A.

SHEET  
NO.- 1