

✓
ITEM OF WORK:- ESTIMATE FOR ELECTRICAL WORK OF 2 SEATED PUBLIC/COMMUNITY TOILET AT NEAR STADIUM WARD NO. - 01 UNDER DUBRAJPUR MUNICIPALITY OF WEST BENGAL (MODEL NO -F) [ASPIRATIONAL PARAMETER]

As per PWD & I & WD schedule district charges will be applicable on PWD & I & WD schedule items

No district charges will be applicable on non-schedule items

Sl No.	Item Description	Unit	Quantity	Rate	Amount	Remarks
1	<p>Distribution wiring in 2 x 22/0.3 (1.5 sqmm) single core stranded 'FR' PVC insulated & unsheathed copper wire (Brand approved by EIC) in 20mm size PVC rigid conduit 'FR' (Precision make), with 1x22/0.3 (1.5 sqmm) single core stranded 'FR' PVC insulated & unsheathed copper wire for ECC, to light/fan/call bell points with Piano Key type switch fixed on MS CRC sheet metal (16 SWG) switch board cum JB on wall complete with 2 no. suitable size "Ph & N" copper bar incl. bakelite/Perspex (wall matching color) top cover 3 mm thick and incl. 175mmx100mmx65mm inspection box, making earthing attachment, painting the MS box and mending good the damages to original finish. [PWD Schedule Page No-E-14 Item No-2a]</p> <p>Average run 5 mtr</p>	Point	12	642.60	7711.20	ADD DISTRICT CHARGES
2	<p>Distribution wiring in 1.1 KV grade 22/0.3 (1.5 sqmm) single core stranded 'FR' PVC insulated & unsheathed copper wire (Brand approved by EIC) in 20mm size PVC rigid conduit 'FR' (Precision make), with 1.1 KV grade 1 x 22/0.3 (1.5 sqmm) single core stranded 'FR' PVC insulated & unsheathed copper wire as ECC, to 5A 3 pin flush type plug socket & Piano Key type switch fixed on MS CRC sheet metal (16 SWG) switch board cum JB on wall incl. bakelite/Perspex (wall matching color) top cover 3 mm thick and incl. painting the MS box and mending good the damages to original finish On Board (only for pay counter) [PWD Schedule Page No-E-15; I-4a]</p>	Point	1	70.35	70.35	ADD DISTRICT CHARGES
3	<p>Supplying and fixing 240V 32A Double Pole AC Type 30mA RCCB.(Complete Set) (ISI marked) [Make- Legrand] (Cat No 4113/95) [Legrand Page No-92]</p>	Nos	1	5942.00	5942.00	NO DISTRICT CHARGES

wiring in 1.1 KV single core
 'FR' PVC insulated & unsheathed
 copper wire (Brand approved by EIC) in 20mm
 size PVC rigid conduit 'FR'
 Precision make) incl. necy. fittings as required
 2 x 36/0.3 (2.5 sqmm) + 1 x 22/0.3 (1.5 sqmm)
 ECC
 [PWD Schedule Page No-E-14 Item No-
 1a(ii)]

mtr

10

124.95

1249.50

ADD
DISTRICT
CHARGES

5

Supplying and fixing double-door SPN MCB
 Distribution Board with IP-42/43 protection,
 concealed in wall after cutting the wall &
 mending good the damages to original finish incl.
 Inter connection with suitable size of copper wire
 and neutral link & provision for earthing
 attachment.
 a) For (2+4 way) (Make -Havells)
 [PWD Schedule Page No-D-9;Item No-13]

No

1

981.75

981.75

ADD
DISTRICT
CHARGES

6

Supplying and fixing 240/415 V MCB of
 Breaking capacity 10kA & C characteristics on
 din rail of existing DBs and necessary connection
 6-32A SP MCB (Make -Havells)
 [PWD Schedule Page No-D-6;Item No-7]

Nos

4

176.40

705.60

ADD
DISTRICT
CHARGES

7

Supplying and fixing 240/415 V MCB Isolator
 on din rail of existing DBs and necessary
 connection.
 40A DP MCB Isolator (Make -Havells)
 [PWD Schedule Page No-D-5;Item No-6]

Nos

1

218.40

218.40

ADD
DISTRICT
CHARGES

8

Supply of TMC501 conventional industrial
 batten (Philips make) LED Tube,model no-
 TMC501 P1xT-LED 22W P3241
 (WB I & WD schedule P-113, I- 5:3 F.22)

Nos

3

460.02

1380.06

ADD
DISTRICT
CHARGES

9

Fixing only single/twin fluroscent light fitting
 complete with all accessories directly on
 wall/ceiling by screws etc..
 [PWD Schedule Page No-C-2;Item No-14a]

Nos

3

90.30

270.90

ADD
DISTRICT
CHARGES

	<p>Fixing bulk head light fitting (Havells make) with die cast aluminium housing & frosted glass on wall ceiling incl. S&F 9watt [Make - Havells] (PWD sch - Page--D-13, I-23)</p>	Nos	3	682.95	2048.85	ADD DISTRICT CHARGES
11	<p>Supply & fixing smart bright street light complete with all accessories to be fixed from the wall of building or on pole incl. making holes /providing clamping arrangement & necy. GI reducer as required.S&F 40 mm GI Pipe 1.5 mtr average length & s&f necy length of 1.5 sqmm pvc insulated single core copper wire & making connections as required & mending good damages incl wall painting. (30 Watt) (Make - Bajaj) [WB I&WD sch P-111, I-f.9.0.2]</p>	Nos	1	3076.32	3076.32	ADD DISTRICT CHARGES
12	<p>Supply of 9" domestic metal exhaust fan 9" (225mm)SWEEP. TRANS AIR - (Make-Crompton/Havells/Bajaj) (UD & MA schedule P-14, I-5)</p>	Nos	3	1863.00	5589.00	NO DISTRICT CHARGES
13	<p>Fixing only exhaust fan after making hole in wall and making good damages and smooth cement finish etc. as practicable as possible and providing necy. length of PVC insulated wire and making connection for exhaust of following diameter: 22.5 cm (9") [PWD Schedule Page No-C-4;Iteam No-28(b)]</p>	Nos	3	259.35	778.05	ADD DISTRICT CHARGES
14	<p>Fixing only louver shutter/cowl on wall with necy. bolts & nuts (6 mm dia x 62 mm long) For 22.5 cm(9") Exhaust fan [PWD Schedule Page No-C-4;Iteam No-30(b)]</p>	Nos	3	86.10	258.30	ADD DISTRICT CHARGES
15	<p>Supply of 240V A.C Ceiling Fan (48" sweep,1200 mm complete) [Make-Crompton [for counter only] (UD & MA schedule P- 23, I- 70)</p>	Each	1	2283.00	2283.00	NO DISTRICT CHARGES

Fixing only Ceiling Fan
[PWD sch P- C-3, I-21(a)]

Each

1

69.30

69.30

ADD
DISTRICT
CHARGES

Supply & Fixing 240 V. 16/20 A Piano key type switch (Brand approved by EIC) on sheet metal switch board incl. S & F 100x100x65mm MS (16SWG) switch board and bakelite/perspex top cover of 3mm thick by Brass screws after making housing for switch by cutting bakelite/perspex cover and making necessary connections as required.

(For Hand Dryer machine)
[PWD sch P- E-6, I-17(b)]

Each

1

211.05

211.05

ADD
DISTRICT
CHARGES

S/F 240V 25A Modular type starter (brand approved by EIC) with 25 A. Modular switch DP MCB (C-Curve) and 4 Module G.I. Modular type switch board with 4 Module Top Cover Plate flushed in wall incl. S/F switch board and Cover Plate and making necy. Connections with PVC Copper wire and earth connectivity wire etc. as per schedule [for Pump]
[PWD Schedule Page No-E-19, Item No-17]
(Please follow in details)

Nos

1

823.20

823.20

ADD
DISTRICT
CHARGES

Supply and Fixing of 2 mm Polyvinyl glow sign board made of 22 SWG GI sheet box with 1"X1" aluminum channel for fixing the vinyl board after necessary cutting the letter as required & s/f LED tube light fittings along with all accessories. (16 sqft @495.00/sqft)
(UD & MA schedule P-14, I-4)

Nos

1

7920.00

7920.00

NO DISTRICT
CHARGES

Earthing installation by GI earth Spike (1830 X 20 mm) including 8SWG GI EarthWire & GI nuts, bolts, washer etc.

Nos

1

450.00

450.00

NO DISTRICT
CHARGES

Total

42036.83

Add 18% GST

7566.63

Total With GST (A)

49603.46

Cess@1%

496.03

total

~~49998.58~~

50099.49

Contingency Amount on "A"

Contingency@3%

1488.10

(Total+GST)=Rs:

Total

~~51082.72~~

51587.59

Say Rs.

51083.00

51588.00

Rupees Fifty One Thousand Eighty Three Only

Service Connection Charges as per Quotation

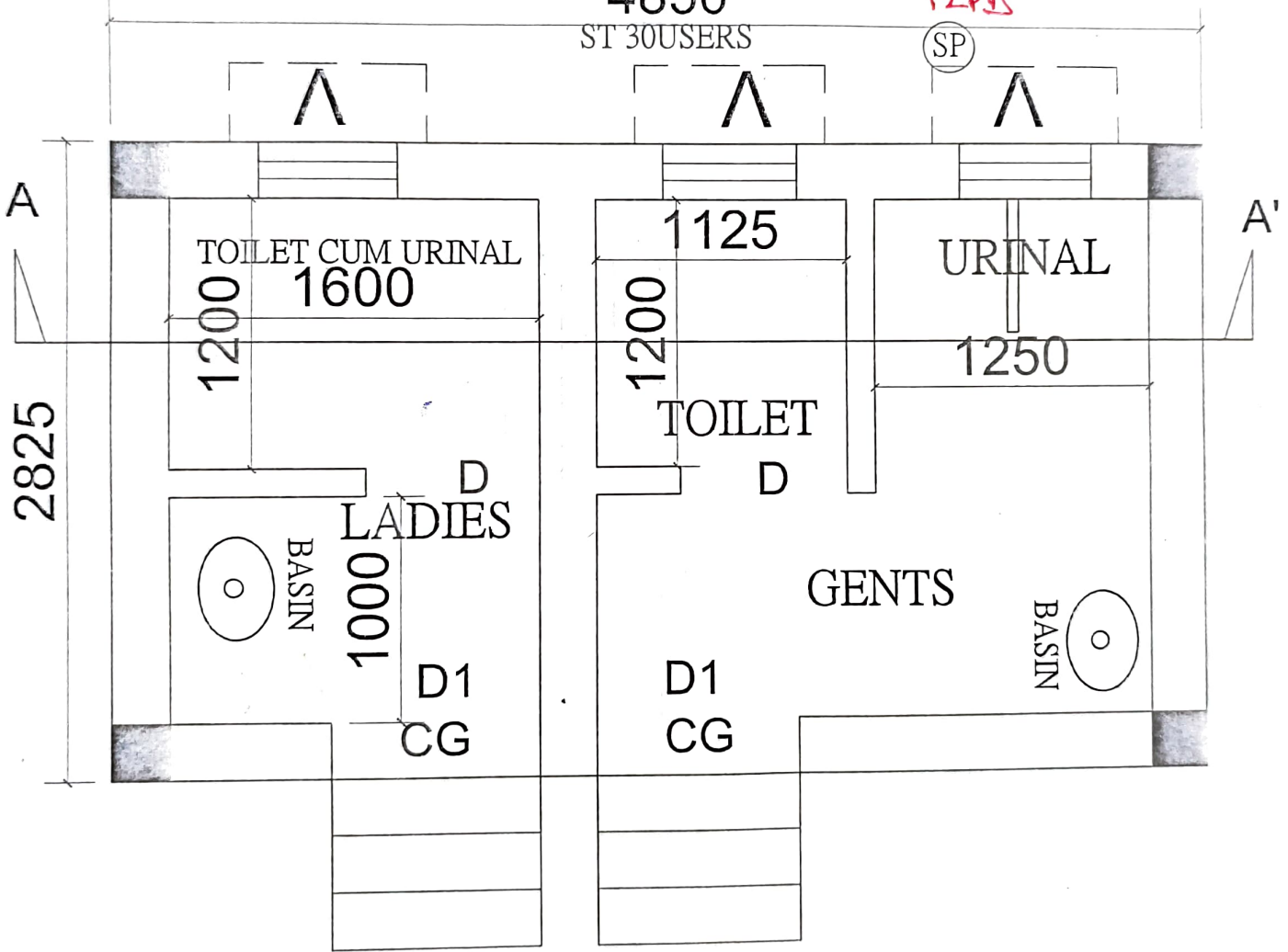
P.T.A

MODEL DRAWING FOR CONSTRUCTION OF CT/PT TOILET SEATS 2Nos URINAL 3Nos
 UNDER DUBRAJPUR MUNICIPALITY, BIRBHUM MODEL-F
 NAME OF THE LOCATION Near Stadium WARD NO. 01

BHLP → 03
 TL → 03
 EF → 03
 OL → 01
 CF → 01
 GSB → 01

~~12 PRS~~

4850
 ST 30USERS



GROUND FLOOR PLAN

[Signature] 10/03/25
 SCALE: 1:50
 DUBRAJPUR MUNICIPALITY

[Signature]
 Chairman
 Dubrajpur Municipality
 Dubrajpur, Birbhum