

**DUM DUM MUNICIPALITY
COST ESTIMATE FOR ELECTRIFICATION WORKS**

Name of Work : ESTIMATE FOR ELECTRICAL WORKS OF TWO SEATED PUBLIC TOILET AT KALIDHAM COLONY , WARDNO-10
UNDER-DUM DUM MUNICIPALITY OF WEST BENGAL. KOLKATA - 700028

(ULB MODEL)

SRL	DESCRIPTION OF ITEM	QTY.	UNIT	RATE	AMOUNT	Remarks
1	Distribution wiring in 2 x 22/0.3 (1.5 sqmm) single core stranded 'FR' PVC insulated & unsheathed copper wire (Brand approved by EIC) in 20mm size PVC rigid conduit 'FR' (Precision make), with 1x22/0.3 (1.5 sqmm) single core stranded 'FR' PVC insulated & unsheathed copper wire for ECC, to light/fan/call bell points with Piano Key type switch fixed on MS CRC sheet metal (16 SWG) switch board cum JB on wall complete with 2 no. suitable size "Ph & N" copper bar incl. bakelite/Perspex (wall matching color) top cover 3 mm thick and incl. 175mm x 100mm x 65mm inspection box, making earthing attachment, painting the MS box and mending good the damages to original finish. Average run 5 mtr. (PWD Schedule Page No-E-14 , Item No-2a).	12	Point	612	7344	
2	Distribution wiring in 1.1 KV grade 22/0.3 (1.5 sqmm) single core stranded 'FR' PVC insulated & unsheathed copper wire (Brand approved by EIC) in 20mm size PVC rigid conduit 'FR' (Precision make), with 1.1 KV grade 1 x 22/0.3 (1.5 sqmm) single core stranded 'FR' PVC insulated & unsheathed copper wire as ECC, to 5A 3 pin flush type plug socket & Piano Key type switch fixed on MS CRC sheet metal (16 SWG) switch board cum JB on wall incl. bakelite/Perspex (wall matching color) top cover 3 mm thick and incl. painting the MS box and mending good the damages to original finish. On Board (only for pay counter). (PWD Schedule Page No-E-15; I-4a)	2	Point	67	134	
3	Supplying and fixing 240V 32A Double Pole AC Type 30mA RCCB. (Complete Set) (ISI marked) [Make - Legrand]. (Cat No 4113/95) (Legrand Page No-92)	1	Nos	5942	5942	
4	Distribution wiring in 1.1 KV single core stranded 'FR' PVC insulated & unsheathed copper wire (Brand approved by EIC) in 20mm size PVC rigid conduit 'FR' (Precision make) incl. necy. fittings as required 2 x 36/0.3 (2.5 sqmm) + 1 x 22/0.3 (1.5 sqmm) ECC. (PWD Schedule Page No-E-14 Item No-I a(ii))	12	Mtr	119	1428	

5	Supplying & Fixing double-door SPN MCB Distribution board with IP-42/43 protection, concealed in wall after cutting the wall & mending good the damages to original finish incl. Inter connection with suitable size of copper wire and neutral link & provision for earthing attachment. a) For (2+4 way) (Make -Havells). (PWD Schedule Page No-D-9;Item No-13)	1 No.	935	935
6	Supplying & Fixing 240/415V MCB of Breaking capacity 10kA & C characteristics on din rail of existing DBs and necessary connection 6-32A SP MCB (Make -Havells). (PWD Schedule Page No-D-6;Item No- 7)	4 Nos	168	672
7	Supplying and fixing 240/415 V MCB Isolator on din rail of existing DBs and necessary connection. 40A DP MCB Isolator (Make -Havells) (PWD Schedule Page No-D-5;Item No-6)	1 No	208	208
8	Supply of TMC501 conventional Industrial batten (Phillips make) LED Tube,model no- TMC501 PI xT-LED 22W P3241 (WB I & WD schedule P-113, 1- 5:3 F.22)	3 Nos	451	1353
9	Fixing only single/twin fluroscnt light fitting complete with all accessories directly on wall/ceiling by screws etc.. (PWD Schedule Page No-C-2;Item No-14a)	3 Nos	86	258
10	Supply & Fixing Bulk head light fittings with die cast aluminium housing frosted clear glass on wall/ceiling incl S/F 9 watt LED Lamp complete set. (Make - Havells) (PWD sch - Page-D-13, I-23)	3 Nos	654	1962
11	Supply & fixing smart bright street light complete with all accessories to be fixed from the wall of building or on pole incl. making holes /provid ing clamping arrangement & necy. GI reducer as required. S&F 40 mm G I Pipe 1.5 mtr average length & s&f necy. length of 1.5 sqmm pvc insulated single core copper wire & making connections as required & mending gooddamages incl wall painting (30 Watt) (Make - B aja) (WB I & WD schedule P-111, I- f:9.0.2)	1 No.	3016	3016
12	Su pply of 9" domestic metal exhaust fan 9" (225mm)SWEEP. TRANS AIR - (Make- Crompton/Havells/Baja) (UD & M A schedule P-14, I-5).	3 Nos	1863	5589

	GST @ 18%	8659.80	
	Total	56769.80	
	Labour Cess (1%)	567.70	
	Contingency @ 3%	1703.09	
	Total	59040.59	
	Say	59041.00	

Nimrod Nayak
 Urban Infrastructure Expert
 Dum Dum Municipality

[Signature]
 Chairman
 Dum Dum Municipality
 Chairman
 Dum Dum Municipality

Technically Vetted Rs.: **59,041.00**
 (Rupees **Fifty nine Thousand forty one only.**)

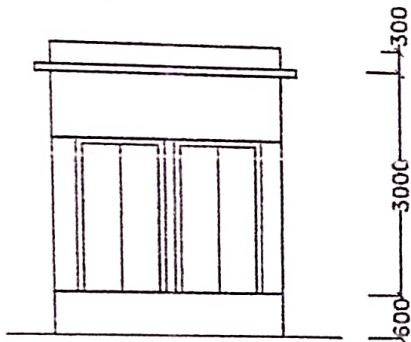
[Signature]
 Junior Engineer 17-02-26
 Electrical & Mechanical Division
 SUDA

[Signature]
 17.2.26
 ASSISTANT ENGINEER
 ELECTRICAL & MECHANICAL DIVISION
 SUDA

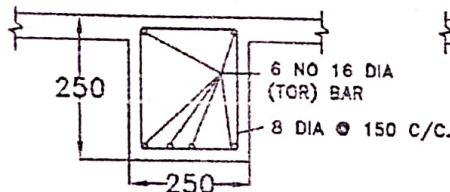
[Signature]
 18/2/26
 Executive Engineer (E/M)
 O/O the Secretary M.E. Dept.
 Government of West Bengal

PROPOSED TOILET BLOCK AT WARD NO-10. UNDER-DUM DUM MUNICIPALITY,

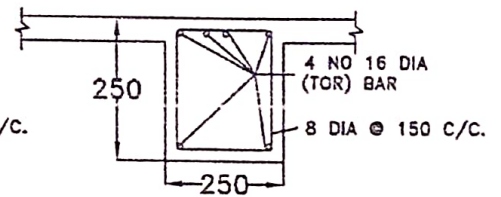
(ULB MODEL)



ELEVATION



DETAILS OF BEAM AT MID SPAN



DETAILS OF BEAM AT SUPPORT

BHLP → 03

TL → 03

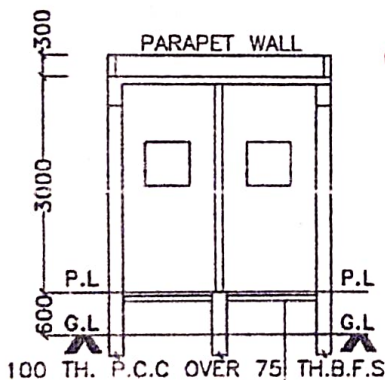
EF → 03

CF → 01

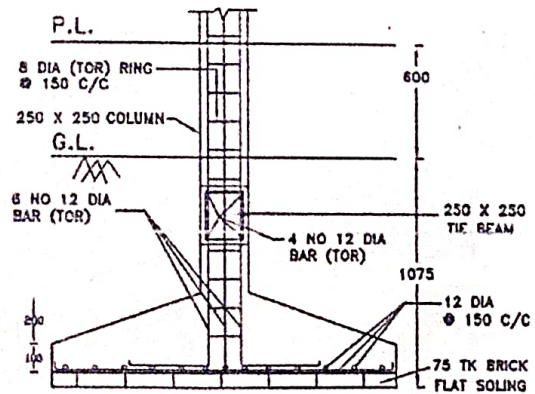
OL → 01

GSB → 01

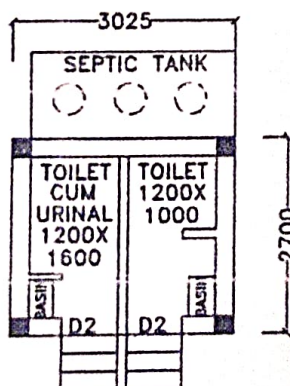
12 PFS



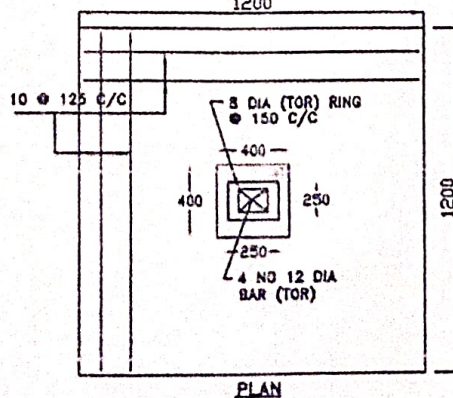
SECTION A-A



SECTION



PLAN



PLAN

DETAILS OF FOUNDATION

Rough
MUNICIPAL CIVIL ENGINEER
DUM DUM MUNICIPALITY

J. M. M.
Chairman
Dum Dum Municipality