

DUM DUM MUNICIPALITY

COST ESTIMATE FOR ELECTRIFICATION WORKS

Name of Work . ESTIMATE FOR ELECTRICAL WORKS OF TWO SEATED PUBLIC TOILET AT MAGAZINBAZAR , WARDNO-13 UNDER
DUM DUM MUNICIPALITY OF WEST BENGAL (MODEL NO U.L.B)

SRI	DESCRIPTION OF ITEM	QTY	UNIT	RATE	AMOUNT	Remarks
1	Distribution wiring in 2 x 22/0.3 (1.5 sqmm) single core stranded 'FR' PVC insulated & unsheathed copper wire (Brand approved by EIC) in 20mm size PVC rigid conduit 'FR' (Precision make), with 1x22/0.3 (1.5 sqmm) single core stranded 'FR' PVC insulated & unsheathed copper wire for ECC, to light/fan/call bell points with Piano Key type switch fixed on MS CRC sheet metal (16 SWG) switch board cum JB on wall complete with 2 no. suitable size "Ph & N" copper bar incl. bakelite/Perspex (wall matching color) top cover 3 mm thick and incl. 175mmx100mmx65mm inspection box, making earthing attachment, painting the MS box and mending good the damages to original finish. Average run 5 mtr. (PWD Schedule Page No-E-14 ,Item No-2a).	12	Point	612	7344	
2	Distribution wiring in 1.1 KV grade 22/0.3 (1.5 sqmm) single core stranded 'FR' PVC insulated & unsheathed copper wire (Brand approved by EIC) in 20mm size PVC rigid conduit 'FR' (Precision make), with 1.1 KV grade 1 x 22/0.3 (1.5 sqmm) single core stranded 'FR' PVC insulated & unsheathed copper wire as ECC, to 5A 3 pin flush type plug socket & Piano Key type switch fixed on MS CRC sheet metal (16 SWG) switch board cum JB on wall incl. bakelite/Perspex (wall matching color) top cover 3 mm thick and incl. painting the MS box and mending good the damages to original finish. On Board (only for pay counter). (PWD Schedule Page No-E-15; I-4a)	2	Point	67	134	
3	Supplying and fixing 240V 32A Double Pole AC Type 30mA RCCB. (Complete Set) (ISI marked) (Make - Legrand). (Cat No 4113/95) (Legrand Page No-92)	1	Nos	5942	5942	
4	Distribution wiring in 1.1 KV single core stranded 'FR' PVC insulated & unsheathed copper wire (Brand approved by EIC) in 20mm size PVC rigid conduit 'FR' (Precision make) incl. necy. fittings as required 2 x 36/0.3 (2.5 sqmm) + 1 x 22/0.3 (1.5 sqmm) ECC. (PWD Schedule Page No-E-14 Item No-I a(ii))	12	Mtr	119	1428	

5	Supplying & Fixing double-door SPN MCB Distribution board with IP-42/43 protection, concealed in wall after cutting the wall & mending good the damages to original finish incl. Inter connection with suitable size of copper wire and neutral link & provision for earthing attachment. a) For (2+4 way) (Make -Havells). (PWD Schedule Page No-D-9;Item No-13)	1 No.	935	935
6	Supplying & Fixing 240/415V MCB of Breaking capacity 10kA & C characteristics on din rail of existing DBs and necessary connection 6-32A SP MCB (Make -Havells). (PWD Schedule Page No-D-6;Item No- 7)	4 Nos	168	672
7	Supplying and fixing 240/415 V MCB Isolator on din rail of existing DBs and necessary connection. 40A DP MCB Isolator (Make -Havells) (PWD Schedule Page No-D-5;Item No-6)	1 No	208	208
8	Supply of TMC501 conventional Industrial batten (Phillips make) LED Tube,model no- TMC501 PI xT-LED 22W P3241 (WB I & WD schedule P-113, 1- 5;3 F.22)	3 Nos	451	1353
9	Fixing only single/twin fluroscent light fitting complete with all accessories directly on wall/ceilling by screws etc.. (PWD Schedule Page No-C-2;Item No-14a)	3 Nos	86	258
10	Supply & Fixing Bulk head light fittings with die cast aluminium housing frosted clear glass on wall/ceilling Incl S/F 9 watt LED Lamp complete set. (Make - Havells) (PWD sch - Page-D-13, I-23)	3 Nos	654	1962
11	Supply & fixing smart bright street light complete with all accessories to be fixed from the wall of building or on pole Incl. making holes /provid ing clamping arrangement & necy. GI reducer as required. S&F 40 mm GI Pipe 1 .5 mtr average length & s&f necy. length of 1.5 sqmm pvc Insulated single core copper wire & making connections as required & mending gooddamages Incl wall painting (30 Watt) (Make - Baja)	1 No.	3016	3016
12	Su pply of 9" domestic metal exhaust fan 9" (225mm)SWEEP. TRANS AIR - (Make- Crompton/Havells/Baja)	3 Nos	1863	5589

13	Fixing only exhaust fan after making hole in wall and making good damages and smooth cement finish etc. as practicable as possible and providing necy. length of PVC insulated wire and making connection for exhaust of following diameter 22.5 em (9"). (PWD Schedule Page No-C-4;Item No-28(b))				
14	Fixing only louver shutter/cowl on wall with necy. bolts & nuts (6 mm dia x 62 mm long) For 22.5 cm(9") Exhaust fan (PWD Schedule Page No-C-4;Item No-30(b))	3 Nos	247	741	
15	Supply of 240V AC Ceiling Fan (48" sweep, 1200 mm complete). [Make-Crompton [for counter only]. (UD & MA schedule P- 23, I- 70)	3 Nos	82	246	
16	Fixing only Ceiling Fan. (PWD sch. P- C-3, I-21(a))	1 Each	2283	2283	
17	Supply & Fixing 240 V, 16/20 A Plano key type switch (Brand approved by EIC) on sheet metal switch board incl. S & F 100x100x65mm MS (16 SWG) switch board and bakelite/perspex top cover of 3mm thlck by Brass screws after making housing for switch by cutting bakelite/perspex cover and making necessary connections as required. (For Hand Dryer machine) (PWD sch P- E-6,I-17(b))	1 Each	66	66	
18	S/F 240V 25A Modular type starter (brand approved by EIC)with 25 A Modular switch DP MCB (C- Curve) and 4 Module G.I. Moduar type switch board with 4 Module Top Cover Plate flushed in wall Incl. S/F switch board and cover plate and making necy. connectionswith PVC copper wire and earth connectivity wire etc. as per schedule [for Pump] (PWD Schedule Page No-E-19, Item No-17) (Please follow In details)	2 Each	201	402	
19	S/F 240V 25A Modular type starter (brand approved by EIC)with 25 A Modular switch DP MCB (C- Curve) and 4 Module G.I. Moduar type switch board with 4 Module Top Cover Plate flushed in wall Incl. S/F switch board and cover plate and making necy. connectionswith PVC copper wire and earth connectivity wire etc. as per schedule [for Pump] (PWD Schedule Page No-E-19, Item No-17) (Please follow In details)	1 No	784	784	
19	Supply and fixing of 2 mm polyvinyl glow sign board made of 22 SWG GI sheet box with 1" X 1" aluminium channel for fixing the vinyl board after necessary cutting the letter as required & s\f LED tube light fittings along with all accessories. (16 sqft @495.00/sqft). (UD & MA schedule P-14,I-4).	1 No	7920	7920	
20	Earthing Installation by GI earth Spike (1830 X 20 mm) Including 8SWG GI Earth Wire & GI nuts, bolts, washer etc	1 No	450	450	
21	Supply, and fixing of 1 HP self Priming pump: Make-KSB, Peribloc-I (UD & MA schedule P-44,I-34)	1 No	6377	6377	
			Total	48110.00	

	GST @ 18%	8659.80	/
	Total	56769.80	/
	Labour Cess (1%)	567.70	/
	Contingency @ 3%	1703.09	/
	Total	59040.59	/
	Say	59041.00	/

Naipon Maji
 Urban Infrastructure Expert
 Dum Dum Municipality
 Urban Infrastructure
 Expert, AMRUT
 Dum Dum Municipality

A. S. M. M.
 Chairman
 Dum Dum Municipality
 Chairman
 Dum Dum Municipality

Technically Vetted Rs.: **59,041.00**
 (Rupees **Fifty nine thousand fifty one**)

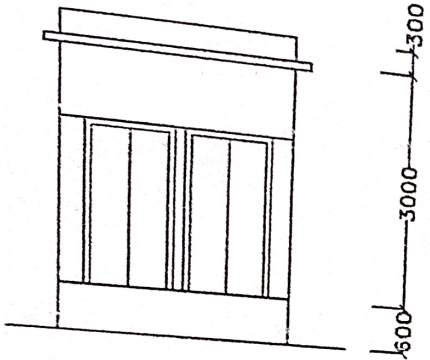
(Signature)
 Junior Engineer 17-02-26
 Electrical & Mechanical Division
 SUDA

(Signature)
 ASSISTANT ENGINEER
 ELECTRICAL & MECHANICAL DIVISION
 SUDA

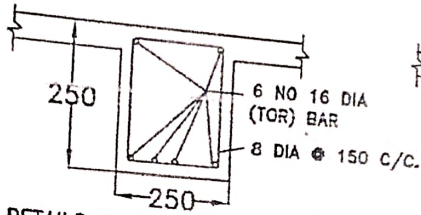
(Signature)
 Executive Engineer (E/M)
 O/O the Secretary M.E. Dts.
 Government of West Bengal

PROPOSED TOILET BLOCK AT WARD NO-13. UNDER-DUM DUM MUNICIPALITY,

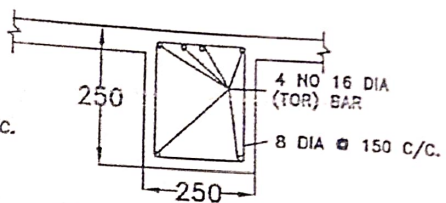
(CULB MODEL)



ELEVATION

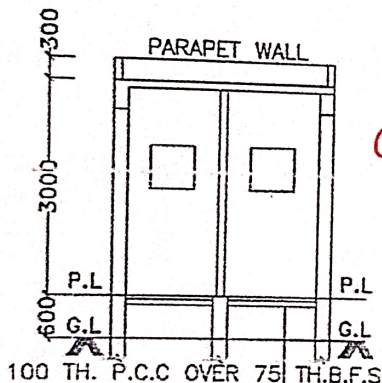


DETAILS OF BEAM AT MID SPAN

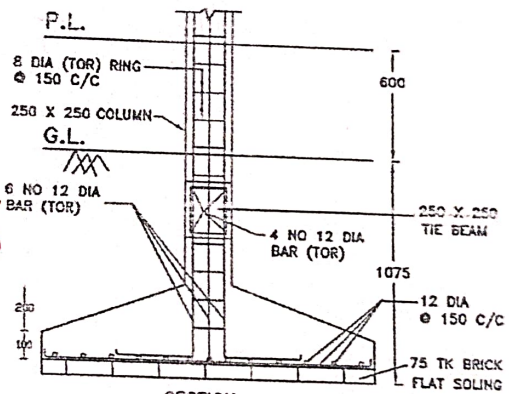


DETAILS OF BEAM AT SUPPORT

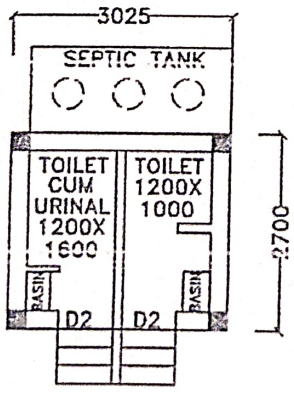
- BHLP → 03
 - TL → 03
 - EF → 03
 - CF → 01
 - OL → 01
 - GrSB → 01
- 12 Pts



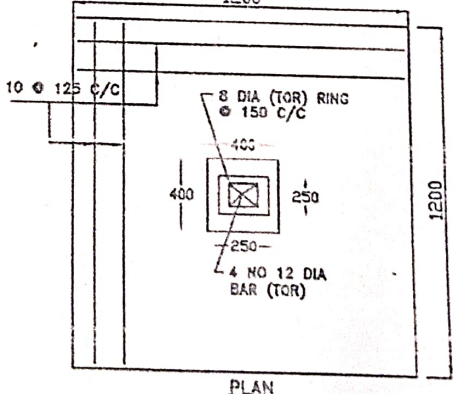
SECTION A-A



SECTION



PLAN



PLAN

DETAILS OF FOUNDATION

Ruph
MUNICIPAL CIVIL ENGINEER
DUM DUM MUNICIPALITY

J Am Y
Chairman
Dum Dum Municipality