

**NAME OF WORK:- ESTIMATE FOR ELECTRICAL WORK OF COMMUNITY TOILET  
at Jagadishpur BANSTALA IN WARD NO. - 24 UNDER ULUBERIA MUNICIPALITY OF  
WEST BENGAL  
[ASPIRATIONAL PARAMETER]**

\* As per PWD & I & WD schedule district charges will be applicable on PWD & I & WD schedule items

\* No district charges will be applicable on non-schedule items

| Sl No. | Item Description  | Unit  | Quantity | Rate   | Amount  |
|--------|---|-------|----------|--------|---------|
| 1      | Distribution wiring in 2 x 22/0.3 (1.5 sqmm) single core stranded 'FR' PVC insulated & unsheathed copper wire (Brand approved by EIC) in 20mm size PVC rigid conduit 'FR' (Precision make), with 1x22/0.3 (1.5 sqmm) single core stranded 'FR' PVC insulated & unsheathed copper wire for ECC, to light/fan/call bell points with Piano Key type switch fixed on MS CRC sheet metal (16 SWG) switch board cum JB on wall complete with 2 no. suitable size "Ph & N" copper bar incl. bakelite/Perspex (wall matching color) top cover 3 mm thick and incl. 175mmx100mmx65mm inspection box, making earthing attachment, painting the MS box and mending good the damages to original finish. [PWD Schedule Page No-E-14 Item No-2a] | Point | 12       | 624.24 | 7490.88 |
|        | Average run 5 mtr   |       |          |        |         |

|   |   |       |    |         |         |
|---|---|-------|----|---------|---------|
| 2 | <p>Distribution wiring in 1.1 KV grade 22/0.3 (1.5 sqmm) single core stranded 'FR' PVC insulated &amp; unsheathed copper wire<br/>(Brand approved by EIC) in 20mm size PVC rigid conduit 'FR' (<b>Precision make</b>), with 1.1 KV grade 1 x 22/0.3 (1.5 sqmm) single core stranded 'FR' PVC insulated &amp; unsheathed copper wire as ECC, to 5A 3 pin flush type plug socket &amp; Piano Key type switch fixed on MS CRC sheet metal (16 SWG) switch board cum JB on wall incl. bakelite/Perspex (wall matching color) top cover 3 mm thick and incl. painting the MS box and mending good the damages to original finish<br/><b>On Board (only for pay counter)</b></p> <p>[PWD Schedule Page No-E-15; I-4a]</p> | Point | 1  | 68.34   | 68.34   |
| 3 | <p>Supplying and fixing 240V 32A Double Pole AC Type 30mA RCCB.(Complete Set) (ISI marked) [Make- <b>Legrand</b>] (Cat No 4113/95) [ <b>Legrand Page No-92</b> ]</p>  | Nos   | 1  | 5942.00 | 5942.00 |
| 4 | <p>Distribution wiring in 1.1 KV single core stranded 'FR' PVC insulated &amp; unsheathed copper wire (Brand approved by EIC) in 20mm size PVC rigid conduit 'FR' (<b>Precision make</b>) incl. necy. fittings as required 2 x 36/0.3 (2.5 sqmm) + 1 x 22/0.3 (1.5 sqmm) ECC<br/>[PWD Schedule Page No-E-14 Item No-1a(ii)]</p>   | mtr   | 10 | 121.38  | 1213.80 |

|   |  |     |   |        |        |
|---|--|-----|---|--------|--------|
| 5 | <p>Supplying and fixing double-door SPN MCB Distribution Board with IP-42/43 protection, concealed in wall after cutting the wall &amp; mending good the damages to original finish incl. Inter connection with suitable size of copper wire and neutral link &amp; provision for earthing attachment.</p> <p>a) For (2+4 way) (Make -Havells)<br/> [PWD Schedule Page No-D-9;Iteam No-13]</p> | No  | 1 | 953.70 | 953.70 |
| 6 | <p>Supplying and fixing 240/415 V MCB of Breaking capacity 10kA &amp; C characteristics on din rail of existing DBs and necessary connection 6-32A SP MCB (Make -Havells)<br/> [PWD Schedule Page No-D-6;Iteam No-7]</p>   | Nos | 4 | 171.36 | 685.44 |
| 7 | <p>Supplying and fixing 240/415 V MCB Isolator on din rail of existing DBs and necessary connection.<br/> 40A DP MCB Isolator (Make -Havells)<br/> [PWD Schedule Page No-D-5;Iteam No-6]</p>   | Nos | 1 | 212.16 | 212.16 |

|    |  |     |   |         |         |
|----|--|-----|---|---------|---------|
| 8  | Supply of TMC501 conventional industrial batten (Philips make) LED Tube.model no-TMC501 P1xT-LED 22W P3241 (WB I & WD schedule P-113, I- 5:3 F.22)   | Nos | 3 | 451.00  | 1353.00 |
| 9  | Fixing only single/twin fluroscnet light fitting complete with all accessories directly on wall/ceiling by screws etc. [PWD Schedule Page No-C-2;Iteam No-14a]   | Nos | 3 | 87.72   | 263.16  |
| 10 | Supply & fixing Bulk head light fittings with die cast aluminium housing frosted/clear glass on wall/ceiling incl S/F 9 watt LED Lamp complete set. [Make - Havells] (PWD sch - Page--D-13, I-23)  | Nos | 3 | 665.58  | 1996.74 |
| 11 | Supply & fixing smart bright street light complete with all accessories to be fixed from the wall of building or on pole incl. making holes /providing clamping arrangement & necy. GI reducer as required.S&F 40 mm GI Pipe 1.5 mtr average length & s&f necy length of 1.5 sqmm pvc insulated single core copper wire & making connections as required & mending good damages incl wall paingting. (30 Watt) (Make - Bajaj) [WB I&WD sch P-111, I-f.9.0.2] | Nos | 1 | 3016.00 | 3016.00 |

|    |   |      |   |         |         |
|----|---|------|---|---------|---------|
| 12 | <p>Supply of 9" domestic metal exhaust fan<br/>9" (225mm)SWEEP. TRANS AIR<br/>( Make-Crompton/Havells/Bajaj)<br/>(UD &amp; MA schedule P-14, I-5)</p>   | Nos  | 3 | 1863.00 | 5589.00 |
| 13 | <p>Fixing only exhaust fan after making hole in wall<br/>and making good damages and smooth cement<br/>finish etc. as practicable as possible and<br/>providing necy. length of PVC insulated wire<br/>and making connection for exhaust of following<br/>diameter:<br/>22.5 cm ( 9" )<br/><br/>[PWD Schedule Page No-C-4;Iteam No-28(b)]</p> | Nos  | 3 | 251.94  | 755.82  |
| 14 | <p>Fixing only louver shutter/cowl on wall with<br/>necy. bolts &amp; nuts<br/>(6 mm dia x 62 mm long)<br/>For 22.5 cm(9") Exhaust fan<br/><br/>[PWD Schedule Page No-C-4;Iteam No-30(b)]</p>   | Nos  | 3 | 83.64   | 250.92  |
| 15 | <p>Supply of 240V A.C Ceiling Fan ( 48"<br/>sweep, 1200 mm complete)<br/>[Make-Crompton [ for counter only]<br/>(UD &amp; MA schedule P- 23, I- 70)</p>   | Each | 1 | 2283.00 | 2283.00 |
| 16 | <p>Fixing only Ceiling Fan<br/>[PWD sch P- C-3, I-21(a)]</p>  | Each | 1 | 67.32   | 67.32   |

|    |  |      |   |         |         |
|----|--|------|---|---------|---------|
| 17 | <p>Supply &amp; Fixing 240 V, 16/20 A Piano key type switch (Brand approved by EIC) on sheet metal switch board incl. S &amp; F 100x100x65mm MS (16SWG) switch board and bakelite/perspex top cover of 3mm thick by Brass screws after making housing for switch by cutting bakelite/perspex cover and making necessary connections as required.<br/>(For Hand Dryer machine)<br/>[PWD sch P- E-6, I-17(b)]</p>                    | Each | 1 | 205.02  | 205.02  |
| 18 | <p>S/F 240V 25A Modular type starter (brand approved by EIC)with 25 A. Modular switch DP MCB (C-Curve)and 4 Module G.I. Moduar type switch board with 4 Module Top Cover Plate flushed in wall incl. S/F switch board and Cover Plate and making necy. Connections with PVC Copper wire and earth connectivity wire etc. as per schedule [for Pump]<br/>[PWD Schedule Page No-E-19, Item No-17]<br/>(Please follow in details)</p> | Nos  | 1 | 799.68  | 799.68  |
| 19 | <p>Supply and Fixing of 2 mm Polyvinyl glow sign board made of 22 SWG GI sheet box with 1"X1" aluminum channel for fixing the vinyl board after necessary cutting the letter as required &amp; s/f LED tube light fittings along with all accessories.<br/>(16 sqft @495.00/sqft)<br/>(UD &amp; MA schedule P-14, I-4)</p>   | Nos  | 1 | 7920.00 | 7920.00 |

|  |  |     |   |                    |          |
|--|--|-----|---|--------------------|----------|
| 20   | Earthing installation by GI earth Spike (1830 X 20 mm) including 8SWG GI EarthWire & GI nuts, bolts, washer etc. | Nos | 1 | 450.00             | 450.00   |
|  |  |     |   | Total              | 41515.98 |
|  |  |     |   | Add 18% GST        | 7472.88  |
|  |  |     |   | Total With GST (A) | 48988.86 |
|  |  |     |   | Cess@1%            | 489.89   |
|  |  |     |   | total              | 49478.74 |
|  | Contingency Amount on "A"  |     |   | Contingency@3%     | 1469.67  |
|  | (Total+GST)=Rs:  |     |   | Total              | 50948.41 |
|  |  |     |   | Say Rs.            | 50948.00 |
| <b>Rupees:- Fifty Thousand Nine Hundred &amp; Forty Eight Only</b> |  |     |   |                    |          |

Say Rs. 50,948.00

*K. K. Moudal*  
Sub-Assistant Engineer  
Uluberia Municipality

*A. Samanli*  
ASSISTANT ENGINEER  
ULUBERIA MUNICIPALITY

*Audus*  
Chairman  
Uluberia Municipality

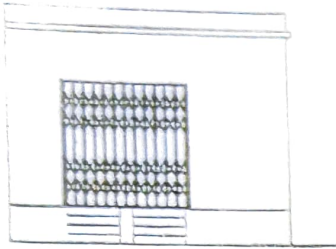
Technically Vetted Rs. 50,948/-  
(Rupees Fifty thousand Nine hundred forty eight)

*60*  
03.03.25  
Junior Engineer  
Electrical & Mechanical Division  
SUDA

*S. K. S.*  
4.3.25  
ASSISTANT ENGINEER  
ELECTRICAL & MECHANICAL DIVISION  
SUDA

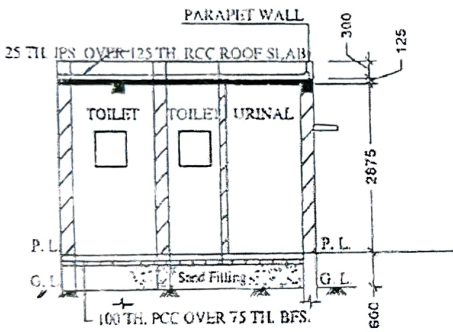
*db*  
5/3/25  
Executive Engineer (E/M)  
O/O the Secretary M.E. Dte.  
Government of West Bengal

MODEL DRAWING FOR CONSTRUCTION OF C. T./P.T.  
TOILET SEATS 2 NOS URINAL 3 NOS  
MODEL NO. - F

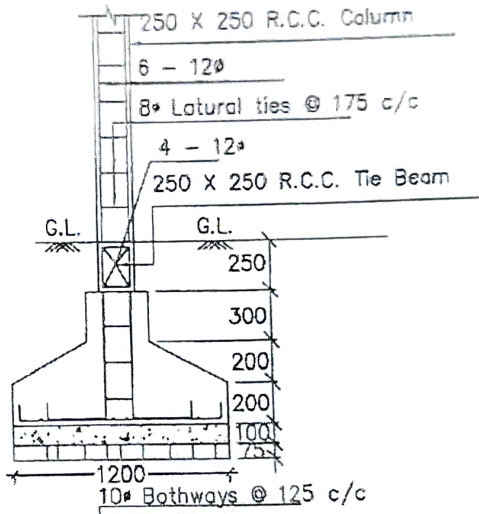


FRONT ELEVATION

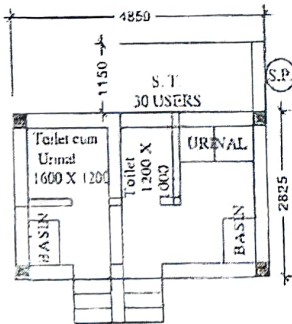
Details Of R.C.C Roof Slab & Beam  
(SCALE - 1 : 25)



SECTION - 'A - A'



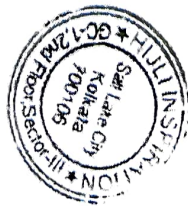
DETAILS OF R. C. C COLUMN  
(SCALE - 1 : 25)



- ✓ BULK HEAD LIGHT → 03
- ✓ TUBE LIGHT → 03
- ✓ EXHAUST FAN → 03
- ✓ OUTDOOR LIGHT → 01
- ✓ CEILING FAN → 01
- ✓ GLOW SIGN BOARD → 01

Checked & Verified

*Pradeep*  
Engineer (CMI)  
MHI INSPIRATION



*A. Samant*  
Sub-Assistant Engineer  
Uluberia Municipality

*A. Samant*  
ASSISTANT ENGINEER  
ULUBERIA MUNICIPALITY

12 pts