

NAME OF WORK:- ESTIMATE FOR ELECTRICAL WORK OF 4 SEATED PUBLIC/COMMUNITY TOILET AT (Land Mark)  
HATAT PARA WARD NO. - 1 UNDER OLD MALDA MUNICIPALITY OF WEST BENGAL (MODEL NO - G)  
[ASPIRATIONAL PARAMETER]

\* As per PWD & I & WD schedule district charges will be applicable on PWD & I & WD schedule items

\* No district charges will be applicable on non-schedule items

SI No.	Item Description	Unit	Quantity	Rate	Amount	Remarks
1	Distribution wiring in 2 x 22/0.3 (1.5 sqmm) single core stranded 'FR' PVC insulated & unsheathed copper wire (Brand approved by EIC) in 20mm size PVC rigid conduit 'FR' (Precision make), with 1x22/0.3 (1.5 sqmm) single core stranded 'FR' PVC insulated & unsheathed copper wire for ECC, to light/fan/call bell points with Piano Key type switch fixed on MS CRC sheet metal (16 SWG) switch board cum JB on wall complete with 2 no. suitable size "Ph & N" copper bar incl. bakelite/Perspex (wall matching color) top cover 3 mm thick and incl. 175mmx100mmx65mm inspection box, making earthing attachment, painting the MS box and mending good the damages to original finish. [PWD Schedule Page No-E-14 Item No-2a]  Average run 5 mtr	Point	<del>16</del> 17	642.60	<del>10281.60</del> 10924.20	Rs 612 + 5% District Charge = 642.60
2	Distribution wiring in 1.1 KV grade 22/0.3 (1.5 sqmm) single core stranded 'FR' PVC insulated & unsheathed copper wire (Brand approved by EIC) in 20mm size PVC rigid conduit 'FR' (Precision make), with 1.1 KV grade 1 x 22/0.3 (1.5 sqmm) single core stranded 'FR' PVC insulated & unsheathed copper wire as ECC, to 5A 3 pin flush type plug socket & Piano Key type switch fixed on MS CRC sheet metal (16 SWG) switch board cum JB on wall incl. bakelite/Perspex (wall matching color) top cover 3 mm thick and incl. painting the MS box and mending good the damages to original finish On Board (only for pay counter)  [PWD Schedule Page No-E-15; 1-4a]	Point	<del>1</del> 2	70.35	<del>70.35</del> 140.70	Rs 67 + 5% District Charge = 70.35
3	Supplying and fixing Sheet steel Main Switches on flat iron frame on wall 240V DP with fuse on L&N 32 A [Make- Havells] [PWD Schedule Page No-D-1 Item No-1(a)]	Nos	1	1340.85	1340.85	Rs 1277 + 5% District Charge = 1340.85
4	Supplying and fixing 240V 32A Double Pole AC Type 30mA RCCB (Complete Set) (ISI marked) [Make- Legrand] (Cat No 4113/95) [Legrand Page No-92]	Nos	1	5942.00	5942.00	NO DISTRICT CHARGES
5	Distribution wiring in 1.1 KV single core stranded 'FR' PVC insulated & unsheathed copper wire (Brand approved by EIC) in 20mm size PVC rigid conduit 'FR' (Precision make) incl. neey fittings as required 2 x 36/0.3 (2.5 sqmm) + 1 x 22/0.3 (1.5 sqmm) ECC [PWD Schedule Page No-E-14 Item No-1a(ii)]	mtr	15	124.95	1874.25	Rs 119 + 5% District Charge = 124.95

6	Supplying and fixing double-door SPN MCB Distribution Board with IP-42/43 protection, concealed in wall after cutting the wall & mending good the damages to original finish incl Inter connection with suitable size of copper wire and neutral link & provision for earthing attachment. a) For (2+4 way) (Make -Havells) [PWD Schedule Page No-D-9;Iteam No-13]	No	1	981 75	981 75	Rs 935+ 5% District Charge = 981 75
7	Supplying and fixing 240/415 V MCB of Breaking capacity 10kA & C characteristics on din rail of existing DBs and necessary connection 6-32A SP MCB (Make -Havells) [PWD Schedule Page No-D-6;Iteam No-7]	Nos	4	176 40	705 60	Rs 168+ 5% District Charge = 176 40
8	Supplying and fixing 240/415 V MCB Isolator on din rail of existing DBs and necessary connection 40A DP MCB Isolator (Make -Havells) [PWD Schedule Page No-D-5;Iteam No-6]	Nos	1	218 40	218 40	Rs 208+5% District Charge = 218 40
9	Supply of TMC501 conventional industrial batten (Philips make) LED Tube, model no- TMC501 P1XT-LED 22W P3241 (WB I & WD schedule P-113, I- 5:3 F.22)	Nos	4	<del>473 55</del> 464.53	<del>1854.20</del> 1858.12	Rs 451+3% District Charge = <del>473 55</del>
10	Fixing only single/twin fluroscnt light fitting complete with all accessories directly on wall/ceiling by screws etc . [PWD Schedule Page No-C-2;Iteam No-14a]	Nos	4	90 30	361 20	Rs 86+ 5% District Charge = 90 30
11	Supply & fixing Bulk head light fittings with die cast aluminium housing frosted/clear glass on wall/ceiling incl S/F 9 watt LED Lamp complete set [Make - Havells] (PWD sch - Page--D-13, I-23)	Nos	6	<del>672 45</del> 682.95	<del>4034 70</del> 4097.70	Rs 569+5% District Charge + 75 = 672 45
12	Supply & fixing smart bright street light complete with all accessories to be fixed from the wall of building or on pole incl. making holes /providing clamping arrangement & necy. GI reducer as required S&F 40 mm GI Pipe 1 5 mtr average length & s&f necy length of 1 5 sqmm pvc insulated single core copper wire & making connections as required & mending good damages incl wall paingting (30 Watt) (Make - Bajaj) [WB I&WD sch P-111, I-f.9.0.2]	Nos	1	<del>3166 80</del> 3106.48	<del>3166 80</del> 3106.48	31. Rs 3016+ 5% District Charge = <del>3166 80</del>
13	Supply of 9" domestic metal exhaust fan 9" (225mm)SWEEP TRANS AIR - ( Make-Crompton/Havells/Bajaj) (UD & MA schedule P-14, I-5)	Nos	4	1863 00	<del>5589 00</del> 7452.00	NO DISTRICT CHARGES
14	Fixing only exhaust fan after making hole in wall and making good damages and smooth cement finish etc. as practicable as possible and providing necy. length of PVC insulated wire and making connection for exhaust of following diameter: 22.5 cm ( 9" ) [PWD Schedule Page No-C-4;Iteam No-28(b)]	Nos	4	259.35	<del>778 05</del> 1037.40	Rs 247+ 5% District Charge = 259 35
15	Fixing only louver shutter/cowl on wall with necy. bolts & nuts (6 mm dia x 62 mm long) For 22.5 cm(9") Exhaust fan [PWD Schedule Page No-C-4;Iteam No-30(b)]	Nos	4	86.10	<del>258 30</del> 344.40	Rs 82 + 5% District Charge = 86 10

6	Supply of 240V A C Ceiling Fan ( 48" sweep,1200 mm complete) [Make-Crompton [ for counter only] (UD & MA schedule P- 23, 1- 70)	Each	1	2283 00	2283 00	NO DISTRICT CHARGES
17	Fixing only Ceiling Fan [PWD sch P- C-3, 1-21(a)]	Each	1	69 30	69 30	Rs 66+ 5% District Charge = 69 30
18	Supply & Fixing 240 V, 16/20 A Piano key type switch (Brand approved by EIC) on sheet metal switch board incl S & F 100x100x65mm MS (16SWG) switch board and bakelite/perspex top cover of 3mm thick by Brass screws after making housing for switch by cutting bakelite/perspex cover and making necessary connections as required (For Hand Dryer machine) [PWD sch P- E-6, 1-17(b)]	Each	2	211 05	<del>211 05</del> 422.10	Rs 201+ 5% District Charge = 211 05
19	S/F 240V 25A Modular type starter (brand approved by EIC)with 25 A. Modular switch DP MCB (C-Curve)and 4 Module G.I. Moduar type switch board with 4 Module Top Cover Plate flushed in wall incl S/F switch board and Cover Plate and making necy. Connections with PVC Copper wire and earth connectivity wire etc. as per schedule [for Pump] [PWD Schedule Page No-E-19, Item No-17] (Please follow in details)	Nos	1	823 20	823 20	Rs 784 + 5% District Charge = 823 20
20	Supply and Fixing of 2 mm Polyvinyl glow sign board made of 22 SWG GI sheet box with 1"X1" aluminum channel for fixing the vinyl board after necessary cutting the letter as required & slf LED tube light fittings along with all accessories. (16 sqft @495 00/sqft) (UD & MA schedule P-14, 1-4)	Nos	1	7920 00	7920 00	NO DISTRICT CHARGES
21	Earthing installation by GI earth Spike (1830 X 20 mm) including 8SWG GI EarthWire & GI nuts, bolts, washer etc	Nos	1	450 00	450 00	NO DISTRICT CHARGES
				Total	49253 60	52352.65
				Add 18% GST	8865 65	9423.47
				Total With GST (A)	58119 25	61776.12
				Cess@1%	581 19	617.76
				total	58700 44	62393.88
Contingency Amount on "A"				Contingency@3%	1743 58	1853.28
(Total+GST)=Rs				Total	60444 02	64247.16
				Say Rs.	60444.00	

Service Connection Charges as per Quotation

Say Rs. 64,247.00

Technically Vetted Rs. 64,247.00

(Rupees Sixty four thousand and two hundred

red forty seven only.)

Checked & Verified

Engineer (Civil)  
Municipal Corporation

dB  
6/5/25

Executive Engineer (E/M)  
O/O the Secretary M.E. Dte.  
Government of West Bengal

Sanet Das  
ELECTRICAL ENGINEER  
CONTRACTUAL  
OLD MALDA MUNICIPALITY

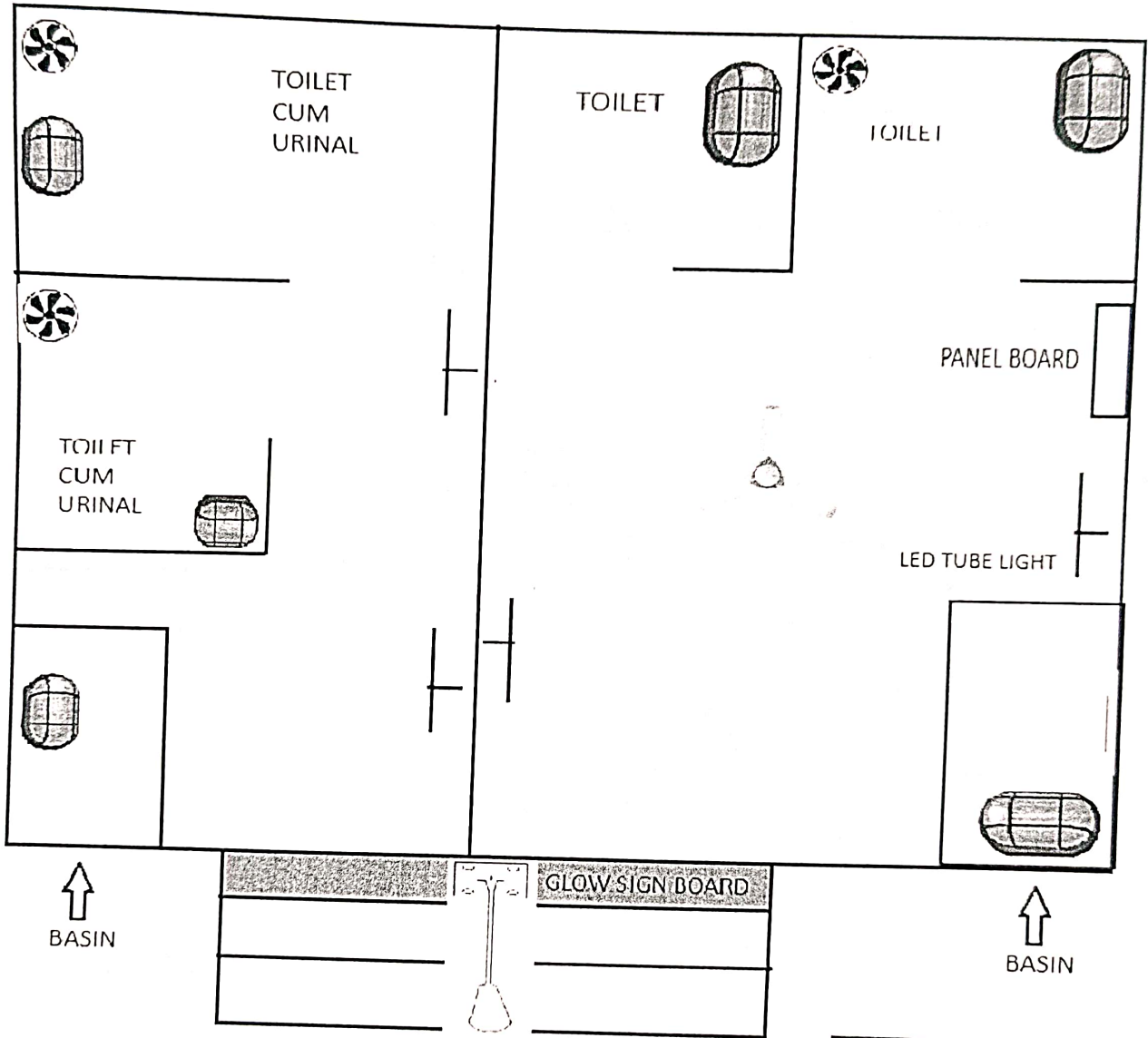
Chairman  
Old Malda Municipality



ASSISTANT ENGINEER  
ELECTRICAL & MECHANICAL DIVISION  
SUDA

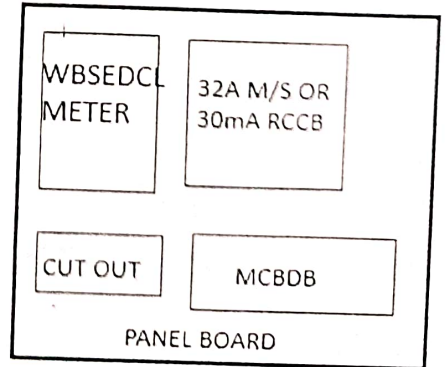
Junior Engineer  
Electrical & Mechanical Division  
SUDA

SCHEMATICS FOR ELECTRICAL WORK OF 4 SEATED PUBLIC/COMMUNITY TOILET AT (Land Mark) HATAT PARA WARD NO. - 1 UNDER OLD MALDA MUNICIPALITY OF WEST BENGAL (MODEL NO - G)



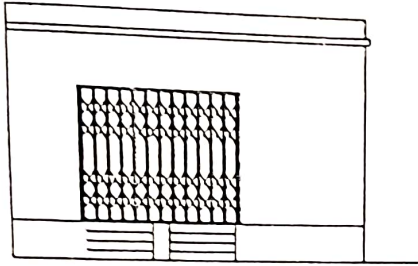
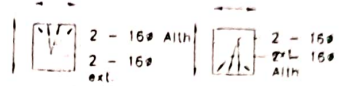
- 1) MCBDB - 1 NOS ISOLATOR , 4 NOS MCB
- 2) LED TUBE LIGHT - 4 NOS
- 3) BULK HEAD LIGHT FITTING - 6 NOS
- 4) CEILING FAN - 1 NOS
- 5) EXHAUST FAN - 3 NOS **4 NOS**
- 6) 30W STREET LIGHT - 1 NOS
- 7) GLOW SIGN BOARD - 1 NOS

*Sauat Das*  
**ELECTRICAL ENGINEER**  
**CONTRACTUAL**  
**OLD MALDA MUNICIPALITY**



*Sauat Das*  
**Chairman**  
**Old Malda Municipality**

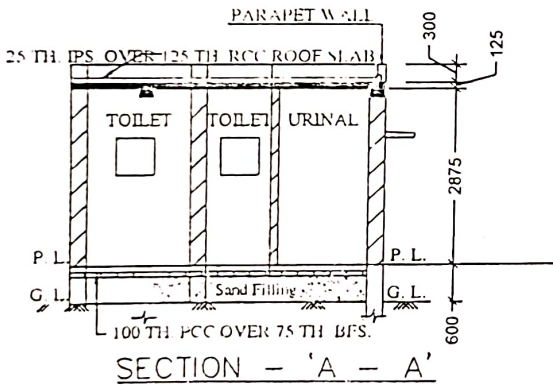
MODLE DRAWING FOR CONSTRUCTION OF C. T./P.T.  
 TOILET SEATS 4 Nos URINAL 5 Nos  
 MODLE NO.- G



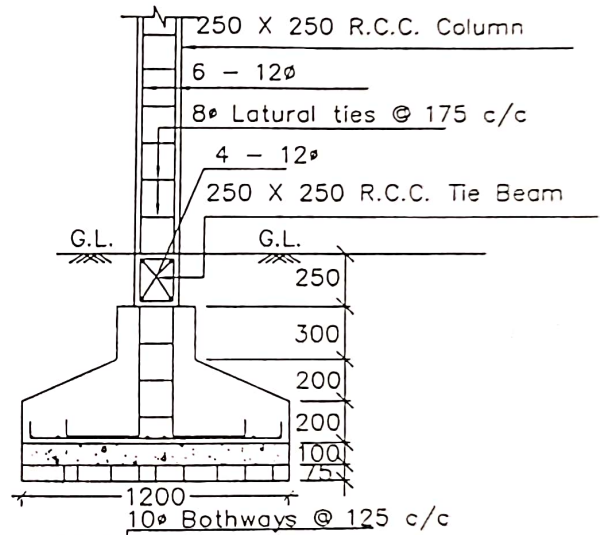
FRONT ELEVATION



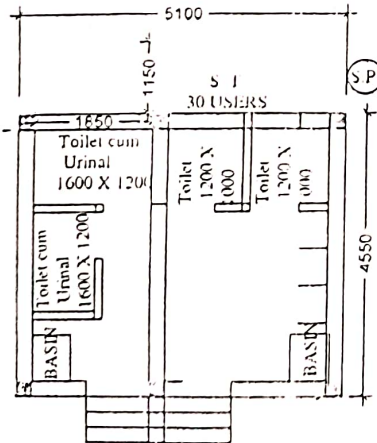
Details Of R.C.C Roof Slab & Beam  
 (SCALE - 1 : 25)



SECTION - 'A - A'



DETAILS OF R. C. C COLUMN  
 (SCALE - 1 : 25)



*Sanat Das*  
**ELECTRICAL ENGINEER**  
 CONTRACTUAL  
 OLD MALDA MUNICIPALITY

*[Signature]*  
 Chairman  
 Old Malda Municipality