

WORK:- ESTIMATE FOR ELECTRICAL WORK OF 2 SEATED PUBLIC/COMMUNITY TOILET AT (Land Mark) R PARA CHARAK MATH, WARD NO. - 8 UNDER OLD MALDA MUNICIPALITY OF WEST BENGAL (MODEL NO - F)

[ASPIRATIONAL PARAMETER]

* As per PWD & I & WD schedule district charges will be applicable on PWD & I & WD schedule items

* No district charges will be applicable on non-schedule items

Sl No.	Item Description	Unit	Quantity	Rate	Amount	Remarks
1	Distribution wiring in 2 x 22/0.3 (1.5 sqmm) single core stranded 'FR' PVC insulated & unsheathed copper wire (Brand approved by EIC) in 20mm size PVC rigid conduit 'FR' (Precision make), with 1x22/0.3 (1.5 sqmm) single core stranded 'FR' PVC insulated & unsheathed copper wire for ECC, to light/fan/call bell points with Piano Key type switch fixed on MS CRC sheet metal (16 SWG) switch board cum JB on wall complete with 2 no. suitable size "Ph & N" copper bar incl. bakelite/Perspex (wall matching color) top cover 3 mm thick and incl. 175mmx100mmx65mm inspection box, making earthing attachment, painting the MS box and mending good the damages to original finish [PWD Schedule Page No-E-14 Item No-2a] Average run 5 mtr	Point	12	642 60	7711.20	612+5% District Charges = 642 60
2	Distribution wiring in 1 1 KV grade 22/0.3 (1.5 sqmm) single core stranded 'FR' PVC insulated & unsheathed copper wire (Brand approved by EIC) in 20mm size PVC rigid conduit 'FR' (Precision make), with 1.1 KV grade 1 x 22/0.3 (1.5 sqmm) single core stranded 'FR' PVC insulated & unsheathed copper wire as ECC, to 5A 3 pin flush type plug socket & Piano Key type switch fixed on MS CRC sheet metal (16 SWG) switch board cum JB on wall incl. bakelite/Perspex (wall matching color) top cover 3 mm thick and incl. painting the MS box and mending good the damages to original finish On Board (only for pay counter) [PWD Schedule Page No-E-15; I-4a]	Point	2	70 35	70 35 140.70	Rs 67+ 5% District Charge = Rs 70 35
3	Supplying and fixing Sheet steel Main Switches on flat iron frame on wall 240V DP with fuse on L&N 32 A [Make- Havells] [PWD Schedule Page No-D-1 Item No-1(a)]	Nos	1	1340 85	1340.85	Rs 1277+5% District Charge = Rs 1340 85
4	Supplying and fixing 240V 32A Double Pole AC Type 30mA RCCB.(Complete Set) (ISI marked) [Make- Legrand] (Cat No 4113/95) [Legrand Page No-92]	Nos	1	5942 00	5942.00	NO DISTRICT CHARGES

5	<p>istribution wiring in 1.1 KV single core stranded 'FR' PVC insulated & unsheathed copper wire (Brand approved by EIC) in 20mm size PVC rigid conduit 'FR' (Precision make) incl. necy. fittings as required 2 x 36/0.3 (2.5 sqmm) + 1 x 22/0.3 (1.5 sqmm) ECC [PWD Schedule Page No-E-14 Item No-1a(ii)]</p>	mtr	10	124.95	1249.50	Rs 119+5% District Charge = 124.95
6	<p>Supplying and fixing double-door SPN MCB Distribution Board with IP-42/43 protection, concealed in wall after cutting the wall & mending good the damages to original finish incl. Inter connection with suitable size of copper wire and neutral link & provision for earthing attachment. a) For (2+4 way) (Make -Havells) [PWD Schedule Page No-D-9;Item No-13]</p>	No	1	981.75	981.75	Rs 935+ 5% District Charge = Rs. 935
7	<p>Supplying and fixing 240/415 V MCB of Breaking capacity 10kA & C characteristics on din rail of existing DBs and necessary connection 6-32A SP MCB (Make -Havells) [PWD Schedule Page No-D-6;Item No-7]</p>	Nos	4	176.40	705.60	Rs 168+ 5% District Charge = 176.40
8	<p>Supplying and fixing 240/415 V MCB Isolator on din rail of existing DBs and necessary connection. 40A DP MCB Isolator (Make -Havells) [PWD Schedule Page No-D-5;Item No-6]</p>	Nos	1	218.40	218.40	Rs 208+ 5% District Charge = Rs. 218.40
9	<p>Supply of TMC501 conventional industrial batten (Philips make) LED Tube,model no- TMC501 P1xT-LED 22W P3241 (WB I & WD schedule P-113, I- 5:3 F.22)</p>	Nos	3	464.53	1393.59	Rs 451+ 3% District Charge = Rs. 464.53
10	<p>Fixing only single/twin flurosent light fitting complete with all accessories directly on wall/ceiling by screws etc.. [PWD Schedule Page No-C-2;Item No-14a]</p>	Nos	3	90.30	270.90	Rs 86+ 5% District Charge = 90.30
11	<p>Supply & fixing Bulk head light fittings with die cast aluminium housing frosted/clear glass on wall/ceiling incl S/F 9 watt LED Lamp complete set. [Make - Havells] (PWD sch - Page--D-13, I-23)</p>	Nos	3	672.45	2017.35	Rs 569+ 5% District Charge + 75 = Rs 672.45
				682.95	2048.85	

12	<p>fixing smart bright street light complete with accessories to be fixed from the wall of building or on pole incl. making holes /providing wiring arrangement & necy. GI reducer as required S&F 40 mm GI Pipe 1.5 mtr average length & s&f necy length of 1.5 sqmm pvc insulated single core copper wire & making connections as required & mending good damages incl wall painting. (30 Watt) (Make - Bajaj) [WB I&WD sch P-111, I-F.9.0.2]</p>	Nos	1	3106.48	3106.48	Rs 3016+ 5% District Charge = 3106.48
13	<p>Supply of 9" domestic metal exhaust fan 9" (225mm)SWEEP TRANS AIR - (Make-Crompton/Havells/Bajaj) (UD & MA schedule P-14, I-5)</p>	Nos	3	1863.00	5589.00	NO DISTRICT CHARGES
14	<p>Fixing only exhaust fan after making hole in wall and making good damages and smooth cement finish etc. as practicable as possible and providing necy. length of PVC insulated wire and making connection for exhaust of following diameter: 22.5 cm (9") [PWD Schedule Page No-C-4;Iteam No-28(b)]</p>	Nos	3	259.35	778.05	Rs 247 + 5% District Charge = Rs 259.35
15	<p>Fixing only louver shutter/cowl on wall with necy. bolts & nuts (6 mm dia x 62 mm long) For 22.5 cm(9") Exhaust fan [PWD Schedule Page No-C-4;Iteam No-30(b)]</p>	Nos	3	86.10	258.30	Rs 82 + 5% District Charge = 86.10
16	<p>Supply of 240V A C Ceiling Fan (48" sweep,1200 mm complete) [Make-Crompton [for counter only] (UD & MA schedule P- 23, I- 70)</p>	Each	1	2283.00	2283.00	NO DISTRICT CHARGES
17	<p>Fixing only Ceiling Fan [PWD sch P- C-3, I-21(a)]</p>	Each	1	69.30	69.30	Rs 66+ 5% District Charge = 69.30
18	<p>Supply & Fixing 240 V, 16/20 A Piano key type switch (Brand approved by EIC) on sheet metal switch board incl S & F 100x100x65mm MS (16SWG) switch board and bakelite/perspex top cover of 3mm thick by Brass screws after making housing for switch by cutting bakelite/perspex cover and making necessary connections as required (For Hand Dryer machine) [PWD sch P- E-6, I-17(b)]</p>	Each	2	211.05	211.05 422.10	Rs 201 + 5% District Charge = 211.05

19	25A Modular type starter (brand ved by EIC)with 25 A Modular switch DP B (C-Curve)and 4 Module G I Moduar type h board with 4 Module Top Cover Plate flushed in wall incl S/F switch board and Cover Plate and making neey Connections with PVC Copper wire and earth connectivity wire etc as per schedule [for Pump] [PWD Schedule Page No-E-19, Item No-17] (Please follow in details)	Nos	1	823 20	823 20	Rs 784 + 5% District Charge = 823 20
20	Supply and Fixing of 2 mm Polyvinyl glow sign board made of 22 SWG GI sheet box with 1"X1" aluminum channel for fixing the vinyl board after necessary cutting the letter as required & s/f LED tube light fittings along with all accessories (16 sqft @495 00/sqft) (UD & MA schedule P-14, 1-4)	Nos	1	7920 00	7920 00	NO DISTRICT CHARGES
21	Earthing installation by GI earth Spike (1830 X 20 mm) including 8SWG GI EarthWire & GI nuts, bolts, washer etc	Nos	1	450 00	450 00	NO DISTRICT CHARGES
				Total	43389 87	43702.77
				Add 18% GST	7810 18	7866.49
				Total With GST (A)	51200 05	51569.26
				Cess@1%	512 00	515.69
				total	51712 05	52084.95
Contingency Amount on "A"				Contingency@3%	1536 00	1547.07
(Total+GST)=Rs				Total	53248 05	53632.02
				Say Rs.	53248.00	
Service Connection Charges as per Quotation						

Say RS. 53,632.00

Samat Das
ELECTRICAL ENGINEER
CONTRACTUAL
OLD MALDA MUNICIPALITY

[Signature]
Chairman
Old Malda Municipality

Technically Vetted Rs. 53,632.00

(Rupees ~~fifty three thousand six hundred~~
red thirty two only.)

[Signature]
06.05.25
Junior Engineer
Electrical & Mechanical Division
SUDA

[Signature]
6.5.25
ASSISTANT ENGINEER
ELECTRICAL & MECHANICAL DIVISION
SUDA

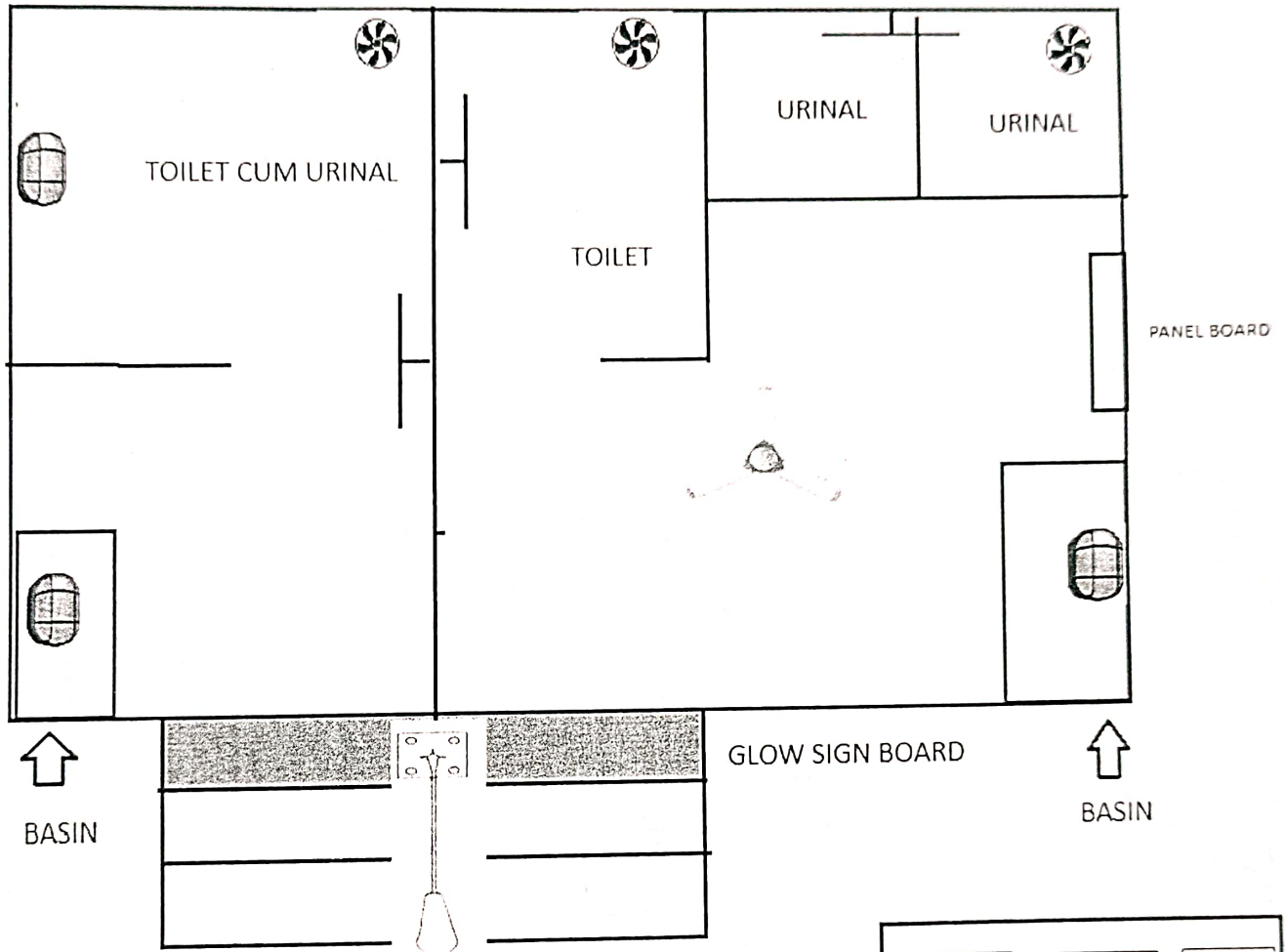
[Signature]
6/5/25
Executive Engineer (E/M)
O/O the Secretary M.E. Dte.
Government of West Bengal



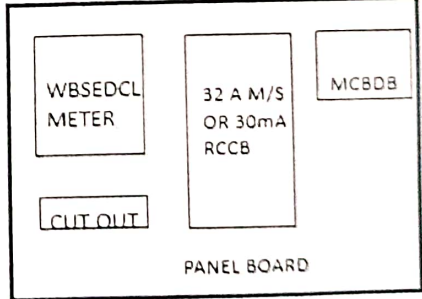
Checked & Verified

Engineer (Civil)
Hiji INSPIRATION

ESTIMATE FOR ELECTRICAL WORK OF 2 SEATED PUBLIC/COMMUNITY TOILET AT (Land Mark) HALDER PARA CHARAK MATH, WARD NO. - 8 UNDER OLD MALDA MUNICIPALITY OF WEST BENGAL



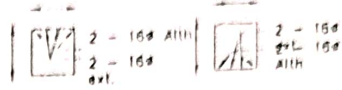
- 1) MCBDB - 1 NOS ISOLATOR, 4 NOS MCB
- 2) CEILING FAN - 1 NOS
- 3) 30W STREET LIGHT - 1 NOS
- 4) LED TUBE LIGHT - 3 NOS
- 5) BULK HEAD LIGHT FITTINGS - 3 NOS
- 6) EXHAUST FAN - 3 NOS
- 7) GLOW SIGN BOARD - 1 NOS



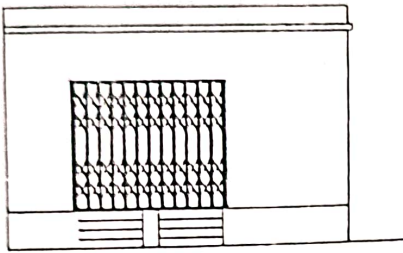
Sarat Das
 ELECTRICAL ENGINEER
 CONTRACTUAL
 OLD MALDA MUNICIPALITY

[Signature]
 Charman
 Old Malda Municipality

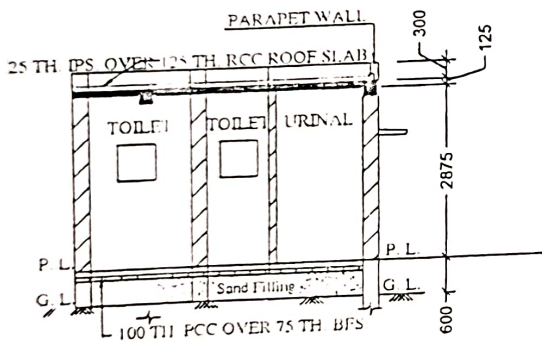
MODEL DRAWING FOR CONSTRUCTION OF C. T./P.T.
TOILET SEATS 2 NOS URINAL 3 NOS
MODEL NO.- F



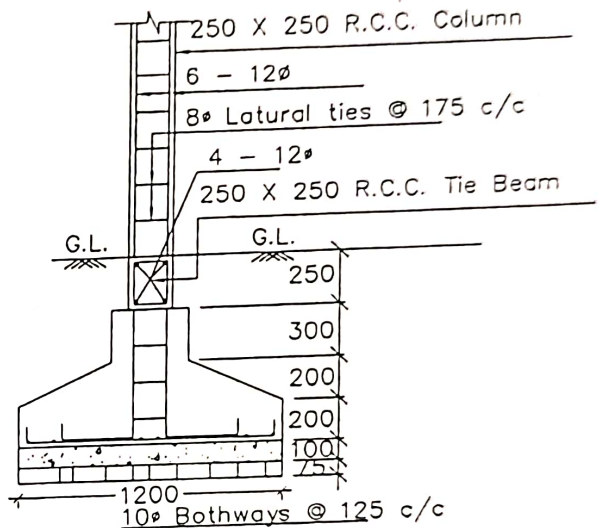
Details Of R.C.C Roof Slab & Beam
(SCALE - 1 : 25)



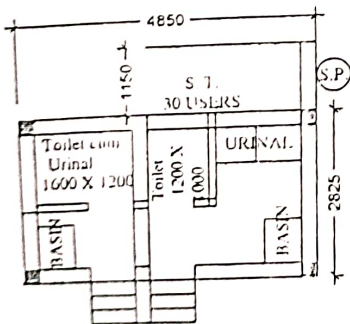
FRONT ELEVATION



SECTION - 'A - A'



DETAILS OF R. C. C COLUMN
(SCALE - 1 : 25)



Sarat Das
ELECTRICAL ENGINEER
CONTRACTUAL
OLD MALDA MUNICIPALITY

[Signature]
Chairman
Old Malda Municipality