

NAME OF WORK:- ESTIMATE FOR ELECTRICAL WORK OF 4 SEATED PUBLIC/COMMUNITY TOILET AT (Land Mark) BACHAMARI GOVT COLONY FIELD WARD NO. - 8 UNDER OLD MALDA MUNICIPALITY OF WEST BENGAL (MODEL NO - G)

ASPIRATIONAL PARAMETERI

* As per PWD & I & WD schedule district charges will be applicable on PWD & I & WD schedule items

* No district charges will be applicable on non-schedule items

SI No.	Item Description	Unit	Quantity	Rate	Amount	Remarks
1	Distribution wiring in 2 x 22/0.3 (1.5 sqmm) single core stranded 'FR' PVC insulated & unsheathed copper wire (Brand approved by EIC) in 20mm size PVC rigid conduit 'FR' (Precision make), with 1x22/0.3 (1.5 sqmm) single core stranded 'FR' PVC insulated & unsheathed copper wire for ECC, to light/fan/call bell points with Piano Key type switch fixed on MS CRC sheet metal (16 SWG) switch board cum JB on wall complete with 2 no. suitable size "Ph & N" copper bar incl. bakelite/Perspex (wall matching color) top cover 3 mm thick and incl. 175mmx100mmx65mm inspection box, making earthing attachment, painting the MS box and mending good the damages to original finish [PWD Schedule Page No-E-14 Item No-2a]	Point	16 17	642 60	10281 60 10924.20	Rs 612 + 5% District Charge = 642 60
	Average run 5 mtr					
2	Distribution wiring in 1.1 KV grade 22/0.3 (1.5 sqmm) single core stranded 'FR' PVC insulated & unsheathed copper wire (Brand approved by EIC) in 20mm size PVC rigid conduit 'FR' (Precision make), with 1.1 KV grade 1 x 22/0.3 (1.5 sqmm) single core stranded 'FR' PVC insulated & unsheathed copper wire as ECC, to 5A 3 pin flush type plug socket & Piano Key type switch fixed on MS CRC sheet metal (16 SWG) switch board cum JB on wall incl. bakelite/Perspex (wall matching color) top cover 3 mm thick and incl. painting the MS box and mending good the damages to original finish On Board (only for pay counter) [PWD Schedule Page No-E-15; 1-4a]	Point	1 2	70 35	70 35 140.70	Rs 67+ 5% District Charge = 70 35
3	Supplying and fixing Sheet steel Main Switches on flat iron frame on wall 240V DP with fuse on L&N 32 A [Make- Havells] [PWD Schedule Page No-D-1 Item No-1(a)]	Nos	1	1340 85	1340 85	Rs 1277+5% District Charge = 1340 85
4	Supplying and fixing 240V 32A Double Pole AC Type 30mA RCCB (Complete Set) (ISI marked) [Make- Legrand] (Cat No 4113/95) [Legrand Page No-92]	Nos	1	5942 00	5942 00	NO DISTRICT CHARGES
5	Distribution wiring in 1.1 KV single core stranded 'FR' PVC insulated & unsheathed copper wire (Brand approved by EIC) in 20mm size PVC rigid conduit 'FR' (Precision make) incl. necy fittings as required 2 x 36/0.3 (2.5 sqmm) + 1 x 22/0.3 (1.5 sqmm) ECC [PWD Schedule Page No-E-14 Item No-1a(ii)]	mtr	15	124 95	1874 25	Rs 119+ 5% District Charge = 124 95

6	Supplying and fixing double-door SPN MCB Distribution Board with IP-42/43 protection, concealed in wall after cutting the wall & mending good the damages to original finish incl Inter connection with suitable size of copper wire and neutral link & provision for earthing attachment. a) For (2+4 way) (Make -Havells) [PWD Schedule Page No-D-9;Item No-13]	No	1	981.75	981.75	Rs 935+ 5% District Charge = 981.75
7	Supplying and fixing 240/415 V MCB of Breaking capacity 10kA & C characteristics on din rail of existing DBs and necessary connection 6-32A SP MCB (Make -Havells) [PWD Schedule Page No-D-6;Item No-7]	Nos	4	176.40	705.60	Rs 168+ 5% District Charge = 176.40
8	Supplying and fixing 240/415 V MCB Isolator on din rail of existing DBs and necessary connection. 40A DP MCB Isolator (Make -Havells) [PWD Schedule Page No-D-5;Item No-6]	Nos	1	218.40	218.40	Rs 208+5% District Charge = 218.40
9	Supply of TMC501 conventional industrial batten (Philips make) LED Tube,model no- TMC501 P1xT-LED 22W P3241 (WB I & WD schedule P-113, I- 5:3 F.22)	Nos	4	473.55 464.53	1854.20 1858.12	Rs 451+3% District Charge = 473.55
10	Fixing only single/twin fluroscent light fitting complete with all accessories directly on wall/ceiling by screws etc. [PWD Schedule Page No-C-2;Item No-14a]	Nos	4	90.30	361.20	Rs 86+ 5% District Charge = 90.30
11	Supply & fixing Bulk head light fittings with die cast aluminium housing frosted/clear glass on wall/ceiling incl S/F 9 watt LED Lamp complete set [Make - Havells] (PWD sch - Page--D-13, I-23)	Nos	6	672.45 682.95	4034.70 4097.70	Rs 569+5% District Charge + 75 = 672.45
12	Supply & fixing smart bright street light complete with all accessories to be fixed from the wall of building or on pole incl. making holes /providing clamping arrangement & necy GI reducer as required.S&F 40 mm GI Pipe 1.5 mtr average length & s&f necy length of 1.5 sqmm pvc insulated single core copper wire & making connections as required & mending good damages incl wall paingting (30 Watt) (Make - Bajaj) [WB I&WD sch P-111, I-f.9.0.2]	Nos	1	3166.80 3106.48	3166.80 3106.48	Rs 3016+ ^{3%} District Charge = 3166.80
13	Supply of 9" domestic metal exhaust fan 9" (225mm)SWEEP TRANS AIR - (Make-Crompton/Havells/Bajaj) (UD & MA schedule P-14, I-5))	Nos	3 4	1863.00	5589.00 7452.00	NO DISTRICT CHARGES
14	Fixing only exhaust fan after making hole in wall and making good damages and smooth cement finish etc. as practicable as possible and providing necy. length of PVC insulated wire and making connection for exhaust of following diameter: 22.5 cm (9") [PWD Schedule Page No-C-4;Item No-28(b)]	Nos	3 4	259.35	778.05 1037.40	Rs 247+ 5% District Charge = 259.35
15	Fixing only louver shutter/cowl on wall with necy. bolts & nuts (6 mm dia x 62 mm long) For 22.5 cm(9") Exhaust fan [PWD Schedule Page No-C-4;Item No-30(b)]	Nos	3 4	86.10	258.30 344.40	Rs 82 + 5% District Charge = 86.10

16	Supply of 240V A C Ceiling Fan (48" sweep, 1200 mm complete) [Make-Crompton [for counter only] (UD & MA schedule P- 23, I- 70)	Each	1	2283 00	2283 00	NO DISTRICT CHARGES
17	Fixing only Ceiling Fan [PWD sch P- C-3, I-21(a)]	Each	1	69 30	69 30	Rs 66+ 5% District Charge = 69 30
18	Supply & Fixing 240 V, 16/20 A Piano key type switch (Brand approved by EIC) on sheet metal switch board incl. S & F 100x100x65mm MS (16SWG) switch board and bakelite/perspex top cover of 3mm thick by Brass screws after making housing for switch by cutting bakelite/perspex cover and making necessary connections as required (For Hand Dryer machine) [PWD sch P- E-6, I-17(b)]	Each	2	211 05	211 05 422.10	Rs 201+ 5% District Charge = 211 05
19	S/F 240V 25A Modular type starter (brand approved by EIC) with 25 A. Modular switch DP MCB (C-Curve) and 4 Module G I. Modular type switch board with 4 Module Top Cover Plate flushed in wall incl. S/F switch board and Cover Plate and making necessary Connections with PVC Copper wire and earth connectivity wire etc as per schedule [for Pump] [PWD Schedule Page No-E-19, Item No-17] (Please follow in details)	Nos	1	823 20	823 20	Rs 784 + 5% District Charge = 823 20
20	Supply and Fixing of 2 mm Polyvinyl glow sign board made of 22 SWG GI sheet box with 1"X1" aluminum channel for fixing the vinyl board after necessary cutting the letter as required & s/f LED tube light fittings along with all accessories (16 sqft @495 00/sqft) (UD & MA schedule P-14, I-4)	Nos	1	7920 00	7920 00	NO DISTRICT CHARGES
21	Earthing installation by GI earth Spike (1830 X 20 mm) including 8SWG GI EarthWire & GI nuts, bolts, washer etc.	Nos	1	450.00	450 00	NO DISTRICT CHARGES
				Total	49253 60	52352.65
				Add 18% GST	8863 65	9423.47
				Total With GST (A)	58119 25	61776.12
				Cess@1%	581 19	617.76
				total	58700 44	62393.88
Contingency Amount on "A"				Contingency@3%	1743 58	1853.28
(Total+GST)=Rs				Total	60444 02	64247.16
				Say Rs.	60444.00	
Service Connection Charges as per Quotation						

Say Rs. 64,247.00

Technically Vetted Rs.: 64,247.00

(Rupees Sixty Four Thousand Two Hundred and

Seventy Six only.)

Soumit Das
ELECTRICAL ENGINEER
CONTRACTUAL
OLD MALDA MUNICIPALITY

[Signature]
Chairman
Old Malda Municipality



Checked & Verified

Engineer (Civil)
INSPIRATION

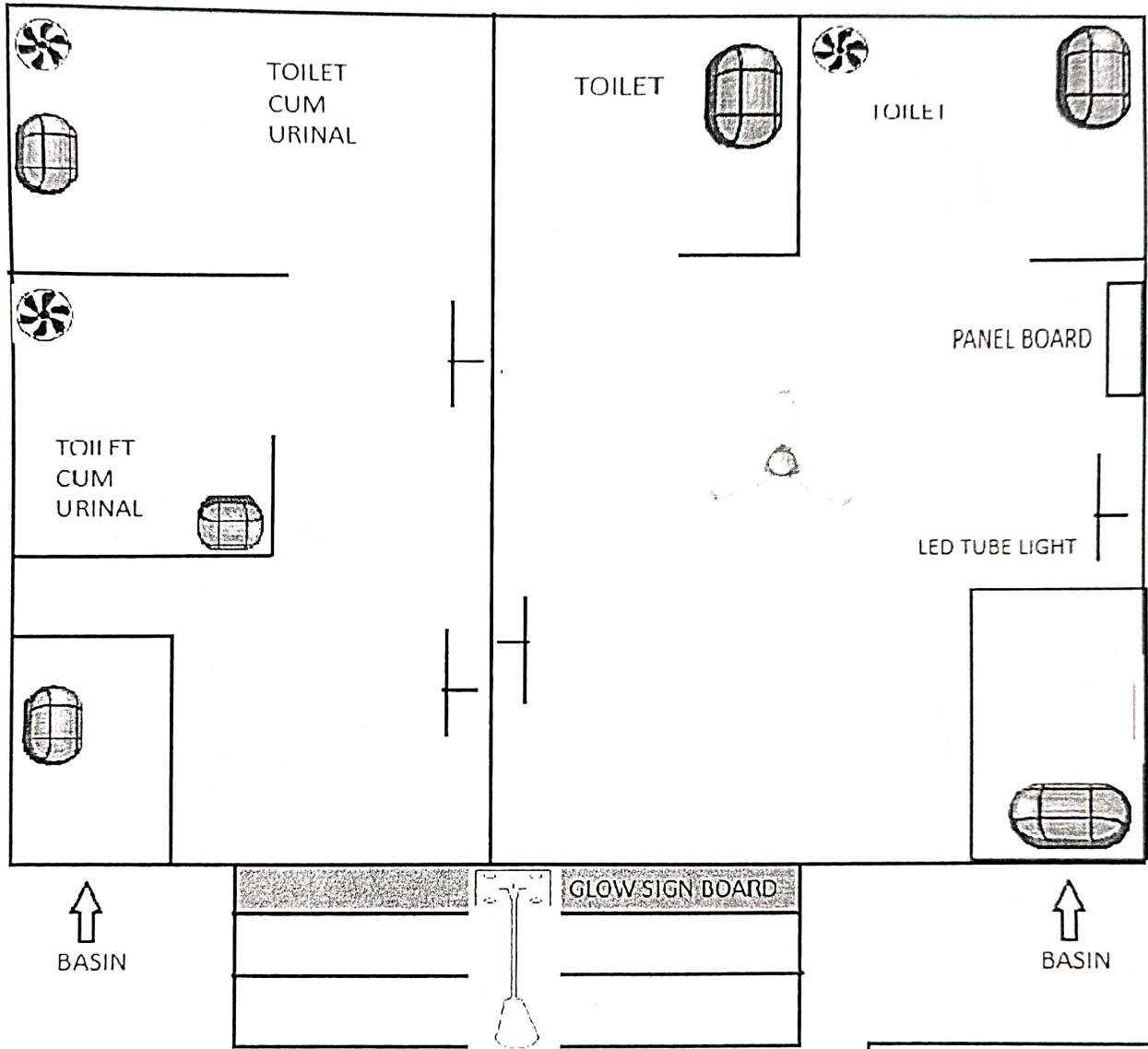
[Signature]
6/5/25

Executive Engineer (E/M)
O/O the Secretary M.E. Dte.
Government of West Bengal

[Signature]
06-05-25
Junior Engineer
Electrical & Mechanical Division
SUDA

[Signature]
ASSTANT ENGINEER
ELECTRICAL & MECHANICAL DIVISION
SUDA

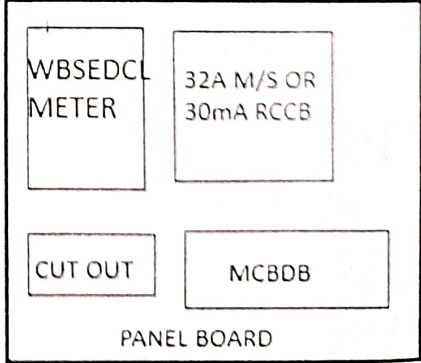
SCHEMATICS FOR ELECTRICAL WORK OF 4 SEATED PUBLIC/COMMUNITY TOILET AT (Land Mark) BACHAMARI GOVT COLONY FIELD WARD NO. - 8 UNDER OLD MALDA MUNICIPALITY OF WEST BENGAL (MODEL NO - G)



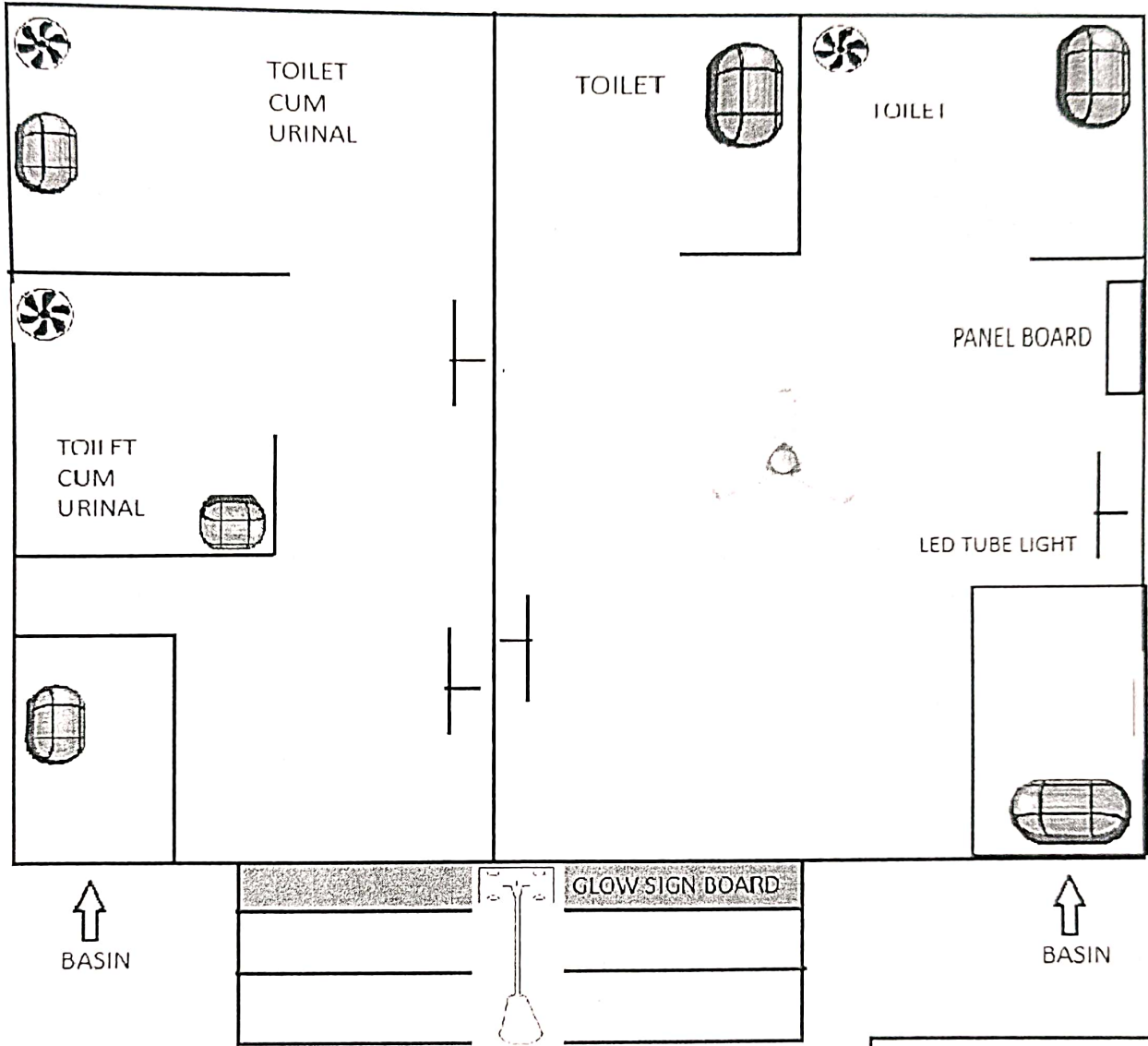
- 1) MCBDB - 1 NOS ISOLATOR , 4 NOS MCB
- 2) LED TUBE LIGHT - 4 NOS
- 3) BULK HEAD LIGHT FITTING - 6 NOS
- 4) CEILING FAN - 1 NOS
- 5) EXHAUST FAN - ~~3 NOS~~ **4 NOS**
- 6) 30W STREET LIGHT - 1 NOS
- 7) GLOW SIGN BOARD - 1 NOS

Sanat Das
 ELECTRICAL ENGINEER
 CONTRACTUAL
 OLD MALDA MUNICIPALITY

[Signature]
 Charman
 Old Malda Municipality



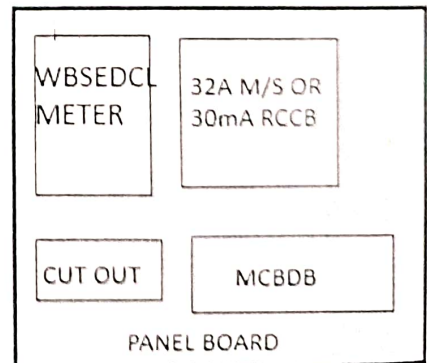
SCHEMATICS FOR ELECTRICAL WORK OF 4 SEATED PUBLIC/COMMUNITY TOILET AT (Land Mark) BACHAMARI GOVT COLONY FIELD WARD NO. - 8 UNDER OLD MALDA MUNICIPALITY OF WEST BENGAL (MODEL NO - G)



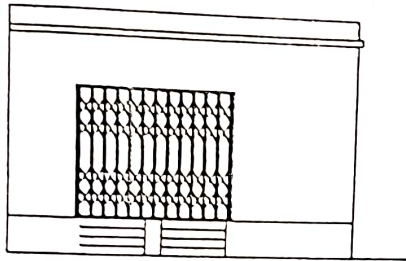
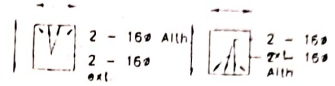
- 1) MCBDB - 1 NOS ISOLATOR , 4 NOS MCB
- 2) LED TUBE LIGHT - 4 NOS
- 3) BULK HEAD LIGHT FITTING - 6 NOS
- 4) CEILING FAN - 1 NOS
- 5) EXHAUST FAN - ~~3 NOS~~ **4 NOS**
- 6) 30W STREET LIGHT - 1 NOS
- 7) GLOW SIGN BOARD - 1 NOS

Sanal Das
 ELECTRICAL ENGINEER
 CONTRACTUAL
 OLD MALDA MUNICIPALITY

[Signature]
 Charman
 Old Malda Municipality

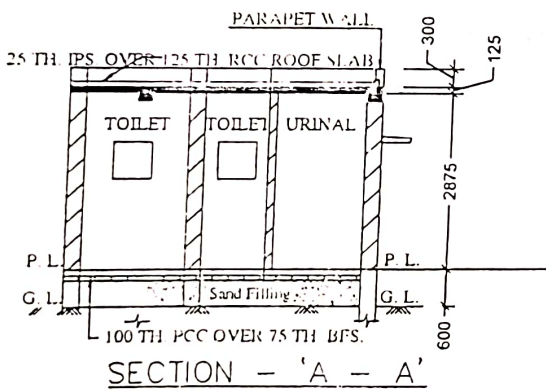


MODE DRAWING FOR CONSTRUCTION OF C. T./P.T.
TOILET SEATS 4 Nos URINAL 5 Nos
MODE NO.- G

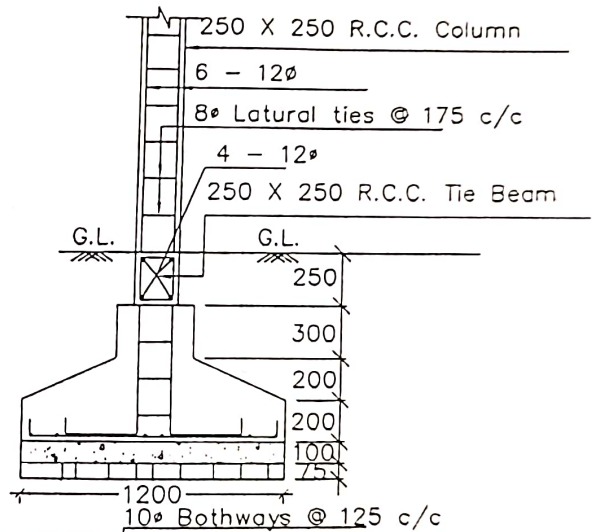


FRONT ELEVATION

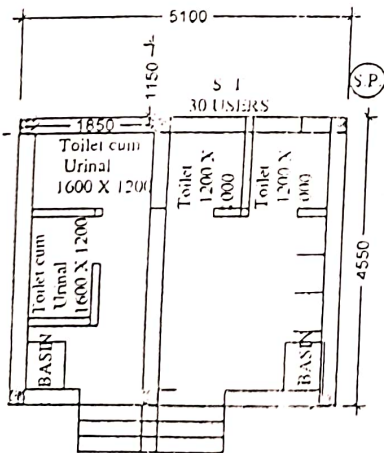
Details Of R.C.C Roof Slab & Beam
(SCALE - 1 : 25)



SECTION - 'A - A'



DETAILS OF R. C. C COLUMN
(SCALE - 1 : 25)



Samat Das
ELECTRICAL ENGINEER
CONTRACTUAL
OLD MALDA MUNICIPALITY

[Signature]
Chairman
Old Malda Municipality