

**NAME OF WORK:- ESTIMATE FOR ELECTRICAL WORK OF 8 SEATED PUBLIC/COMMUNITY TOILET AT
KALYANSHREE JD GIRLS HIGH SCHOOL IN WARD NO -01 WITHIN CHANDRAKONA MUNICIPALITY UNDER SBM
SCHEME OF WEST BENGAL (MODEL NO - B)
[ASPIRATIONAL PARAMETER]**

* As per PWD & I & WD schedule district charges will be applicable on PWD & I & WD schedule items

* No district charges will be applicable on non-schedule items

Sl No.	Item Description	Unit	Quantity	Rate	Amount	Remarks
1	Distribution wiring in 2 x 22/0.3 (1.5 sqmm) single core stranded 'FR' PVC insulated & unsheathed copper wire (Brand approved by EIC) in 20mm size PVC rigid conduit 'FR' (Precision make), with 1x22/0.3 (1.5 sqmm) single core stranded 'FR' PVC insulated & unsheathed copper wire for ECC, to light/fan/call bell points with Piano Key type switch fixed on MS CRC sheet metal (16 SWG) switch board cum JB on wall complete with 2 no. suitable size "Ph & N" copper bar incl. bakelite/Perspex (wall-matching color) top cover 3 mm thick and incl. 175mmx100mmx65mm inspection box, making earthing attachment, painting the MS box and mending good the damages to original finish. [PWD Schedule Page No-E-14 Item No-2a]	Point	28	630.36	17650.08	ADD DISTRICT CHARGES
	Average-run-5-mtr					
2	Distribution wiring in 1.1 KV grade 22/0.3 (1.5 sqmm) single core stranded 'FR' PVC insulated & unsheathed copper wire (Brand approved by EIC) in 20mm size PVC rigid conduit 'FR' (Precision make); with 1.1 KV grade 1x 22/0.3 (1.5 sqmm) single core stranded 'FR' PVC insulated & unsheathed copper wire as ECC to SA 3 pin flush type plug socket & Piano Key type switch fixed on MS CRC sheet metal (16 SWG) switch board cum JB on wall incl. bakelite/Perspex (wall matching color) top cover 3 mm thick and incl. painting the MS box and mending good the damages to original finish. [PWD Schedule Page No-E-15; 1-4a]	Point	1	69.01	67.00 69.01	ADD DISTRICT CHARGES
	Average-run-11.5-mtr					
3	Supplying and fixing 240V 32A Double Pole AC Type 30mA RCCB (Complete Set) (ISI marked) [Make - Legrand] (Cat No 4113/95) [Legrand Page No-92]	Nos	1	5942.00	5942.00	NO DISTRICT CHARGES
	Average-run-11.5-mtr					

4	Distribution wiring in 1.1 KV single core stranded 'FR' PVC insulated & unsheathed copper wire (Brand approved by EIC) in 20mm size PVC rigid conduit 'FR' (Precision make) incl. necy. fittings as required 2 x 36/0.3 (2.5 sqmm) + 1 x 22/0.3 (1.5 sqmm) ECC. [PWD Schedule Page No-E-14 Item No-1a(ii)]	mtr	25	122.57	2975.00 3064.25	ADD DISTRICT CHARGES
5	Supplying and fixing double-door SPN MCB Distribution Board with IP-42/43 protection, concealed in wall after cutting the wall & mending good the damages to original finish incl. Inter connection with suitable size of copper wire and neutral link & provision for earthing attachment. a) For (2+6 way) (Make -Havells) [PWD Schedule Page No-D-9;Item No-13]	No	1	1105.19	1105.19	ADD DISTRICT CHARGES
6	Supplying and fixing 240/415 V MCB of Breaking capacity 10KA & C characteristics on din rail of existing DBs and necessary connection 6-32A SP MCB (Make -Havells) [PWD Schedule Page No-D-6;Item No-7]	Nos	6	173.04	1038.24	ADD DISTRICT CHARGES
7	Supplying and fixing 240/415 V MCB Isolator on din rail of existing DBs and necessary connection. 40A DP MCB Isolator (Make -Havells) [PWD Schedule Page No-D-5;Item No-6]	Nos	1	214.24	208.00 214.24	ADD DISTRICT CHARGES
8	Supply of TMC501 conventional industrial batten (Phillips make) LED Tube,model no-TMC501 PXT-LED 22W/P3241 MCB of (WB1 & WD schedule P-113, I-5:3 F.22) on din rail of existing DBs and necessary connection 6-32A SP MCB (Make -Havells)	Nos	8	464.53	3716.24	ADD DISTRICT CHARGES
9	Fixing only single/twin fлуorescent light fitting complete with all accessories directly on wall/ceiling by screws etc.. [PWD Schedule Page No-C-2;Item No-14a]	Nos	8	88.58	708.64	ADD DISTRICT CHARGES
10	Supply & fixing Bulk head light fittings with die cast aluminium housing frosted/clear glass on wall/ceiling incl S/F 9 watt LED Lamp complete set. [Make - Havells] [PWD sch - Page--D-13, I-23]	Nos	10	671.37	6713.70	ADD DISTRICT CHARGES

11	Supply & fixing smart bright street light complete with all accessories to be fixed from the wall of building or on pole incl. making holes /providing clamping arrangement & necy. GI reducer as required.S&F 40 mm GI Pipe 1.5 mtr average length & s&f necy length of 1.5 sqmm pvc insulated single core copper wire & making connections as required & mending good damages incl wall paingting. (30 Watt) (Make - Baja) [WB I&WD sch P-111, I-1.9.0.2]	Nos	2	3106.48	6212.96	ADD DISTRICT CHARGES
12	Supply of 12" domestic metal exhaust fan 12" 230V 50 Hz SWEEP. TRANS AIR - (Make-Crompton/Havells/Bajaj) (UD & MA schedule P-14, I-5)	Nos	6	2093.00	12558.00	NO DISTRICT CHARGES
13	Fixing only exhaust fan after making hole in wall and making good damages and smooth cement finish etc. as practicable as possible and providing necy. length of PVC insulated wire and making connection for exhaust of following diameter: 30 cm (12") [PWD Schedule Page No-C-4;Item No-28(b)]	Nos	6	338.87	2033.22	ADD DISTRICT CHARGES
14	Fixing only louver shutter/cowl on wall with necy. bolts & nuts (6 mm dia x 62 mm long) For 30 cm(12") Exhaust fan (Make-Crompton/Havells/Bajaj) [PWD Schedule Page No-C-4;Item No-30(b)]	Nos	6	113.30	679.80	ADD DISTRICT CHARGES
15	S/F 240V 25A Modular type starter (brand approved by EIC)with 25 A. Modular switch DP MCB (C-Curve)and 4 Module G.I. Modular type switch board with 4 Module Top Cover Plate flushed in wall incl. S/F switch board and Cover Plate and making necy. Connections with PVC Copper wire and earth connectivity wire etc. as per schedule [for Pump] [PWD Schedule Page No-E-19, Item No-17] (Please follow in details)	Nos	1	807.52	807.52	ADD DISTRICT CHARGES
16	Supply of 240V A.C Ceiling Fan (48" sweep, 1200 mm, complete) [Make-Crompton [for counter only] (UD & MA schedule P- 23, I- 70)	Each	1	2283.00	2283.00	NO DISTRICT CHARGES
17	Fixing only Ceiling Fan [PWD sch P- C-3, I-21(a)]	Each	1	67.98	67.98	ADD DISTRICT CHARGES
15	S/F 240V 25A Modular type starter (brand approved by EIC)with 25 A. Modular switch DP MCB (C-Curve)and 4 Module G.I. Modular type switch board with 4 Module Top Cover Plate flushed in wall incl. S/F switch board and Cover Plate and making necy. Connections with PVC Copper wire and earth connectivity wire etc. as per schedule [for Pump] [PWD Schedule Page No-E-19, Item No-17] (Please follow in details)	Nos				
16	Supply of 240V A.C Ceiling Fan (48" sweep, 1200 mm, complete) [Make-Crompton [for counter only] (UD & MA schedule P- 23, I- 70)	Each				

18	Supply & Fixing 240 V, 16/20 A Piano key type switch (Brand approved by EIC) on sheet metal switch board incl. S & F 100x100x65mm MS (16SWG) switch board and bakelite/perspex top cover of 3mm thick by Brass screws after making housing for switch by cutting bakelite/perspex cover and making necessary connections as required. (For Hand Dryer machine) PWD sch P- E-6, I-17(b)]	Each	2	207.03	414.06	ADD DISTRICT CHARGES
19	Supply and Fixing of 2 mm Polyvinyl glow sign board made of 22 SWG GI sheet box with 1"X1" aluminum channel for fixing the vinyl board after necessary cutting the letter as required & s/f LED tube light fittings along with all accessories. (16 sqft @495.00/sqft) (UD & MA schedule P-14, I-4)	Nos	1	7920.00	7920.00	NO DISTRICT CHARGES
20	Earthing installation by GI earth Spike (1830 X 20 mm) including 8SWG GI EarthWire & GI nuts, bolts, washer etc.	Nos	1	450.00	450.00	NO DISTRICT CHARGES
Total					73550.63	73648.13
Add 18% GST					13239.11	13256.66
Total With GST (A)					86789.74	86904.79
Cess@1%					867.90	869.04
total					87657.64	87773.83
Contingency Amount on "A"					2603.69	2607.14
(Total+GST)=Rs:					90261.33	90380.97
Say Rs.					90261.00	

Service Connection Charges as per Quotation

Say Rs. 90,381.00

A. A. A.
10/03/2025
**Sub Assistant Engineer,
Chandrakona Municipality**

P. B. S.
10/03/25
**Chairman,
Chandrakona Municipality**

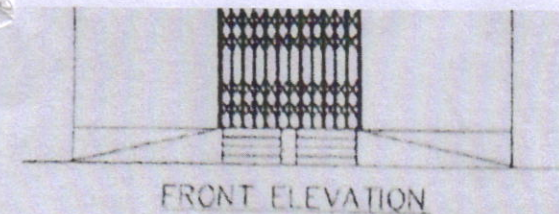
Technically Vetted Rs. 90,381.00
(Rupees Ninety Thousand Three Hundred eighty one only.)

60
18.03.25
**Junior Engineer
Electrical & Mechanical Division
SUDA**

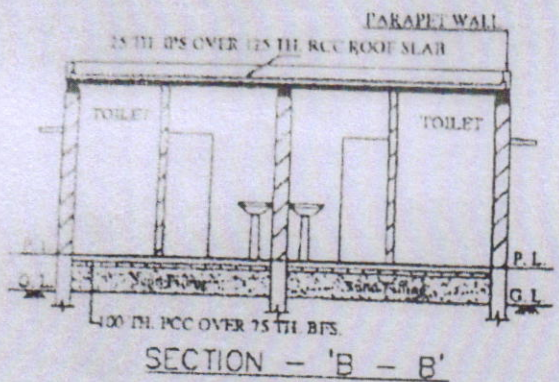
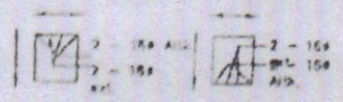
S. K. S.
18/03/25
**ASSISTANT ENGINEER
ELECTRICAL & MECHANICAL DIVISION
SUDA**

d. S.
19/3/25
**Executive Engineer (E/M)
O/O the Secretary M.E. Dte.
Government of West Bengal**

(B)

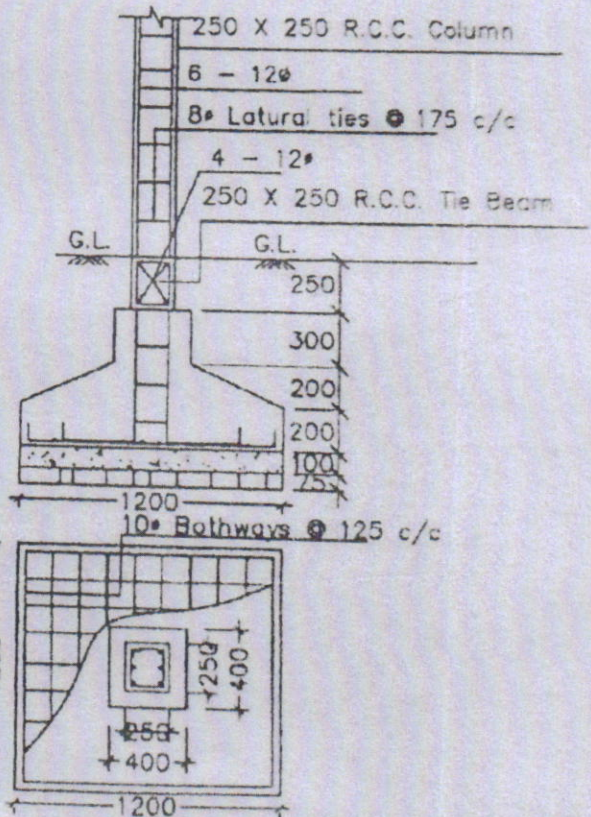
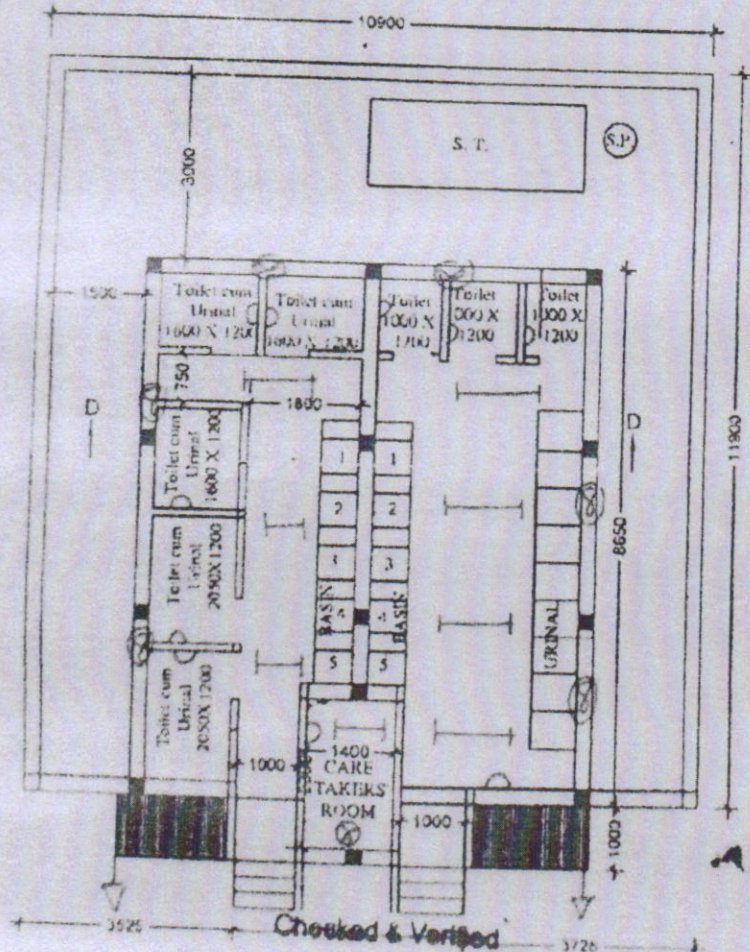
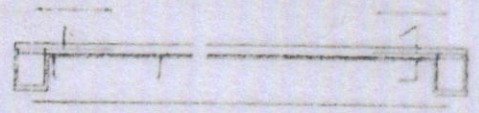


FRONT ELEVATION



SECTION - 'B - B'

Details of R.C.C Roof Slab & Beam
(SCALE - 1 : 25)



DETAILS OF R.C.C COLUMN
(SCALE - 1 : 25)

Pradeep Kumar Singh
Engineer (Civil)
HIMI INSPIRATION

Akela
10/03/2025



- BULK HEAD LIGHT → 10
- TUBE LIGHT → 08
- EXHAUST FAN → 06
- OUTDOOR LIGHT → 02
- CEILING FAN → 01
- GLOW SIGN BOARD → 01

28 pts

Asst. Engineer,
Chandrakona Municipality
Chandrakona, Paschim Medinipur.

Pradeep Kumar Singh
11.3.25
Chairman,
Chandrakona Municipality