

NAME OF WORK:- ESTIMATE FOR ELECTRICAL WORK OF 10 SEATED PUBLIC COMMUNITY TOILET AT (MAYNAGURI HOSPITAL) WARD NO. - 06 ; UNDER MAYNAGURI MUNICIPALITY OF WEST BENGAL (MODEL NO - C) [ASPIRATIONAL PARAMETER]

* As per PWD & I & WD schedule district charges will be applicable on PWD & I & WD schedule items

* No district charges will be applicable on non-schedule items

Sl No	Item Description	Unit	Quantity	Rate	Amount
1	<p>Distribution wiring in 2 x 220 V (1.5 sqmm) single core stranded TR PVC insulated & unbraided copper wire (brand approved by ER) in 20mm size PVC rigid conduit TR (Protection tube) with 1x220 V (1.5 sqmm) single core stranded TR PVC insulated & unbraided copper wire for U.C. in light/fan/ceil wall points with Fanco key type switch fixed on MS CRG sheet metal (16 SWG) switch board size 30 cm wall complete with 2 no. suitable size TS & N socket for ms bakelite/Perspex (wall matching color) top cover 2 mm thick and ml 1" square (10mm x 10mm) insulation box mounting existing attachment mounting the MS box and repairing good the damages to original finish (PWD Schedule Page No-14 Item No-2a)</p> <p>Average rate 7.00</p>	Point	37	854.84	31632.08
2	<p>Distribution wiring in 1.1 KV grade 220 V (1.5 sqmm) single core stranded TR PVC insulated & unbraided copper wire Conduit approved by ER, in 20mm size PVC rigid conduit TR (Protection tube) with 1.1 KV grade 1 x 220 V (1.5 sqmm) single core stranded TR PVC insulated & unbraided copper wire as 22.2 cm size 2 pin dual type plug socket & Fanco key type switch fixed on MS CRG sheet metal (24 SWG) socket metal case 30 cm wall size bakelite/Perspex (wall matching color) top cover 2 mm thick and ml repairing the left side and repairing good the damages to original finish (MS board ready for plug socket) (PWD Schedule Page No-14, 4-0a)</p>	Point	2	71.89	143.78
3	<p>Supporting and fixing CRG 25x 25x 10mm Flat 30 legs 2mm to 1.25 mm (piston bar) (TMS method) (Blake Langford) (1) or (1) 1.25mm (Langford Page No-14)</p>	Size	5	2862.00	14310.00

<p>Distribution wiring in 1.1 KV single core stranded 'FR' PVC insulated & unsheathed copper wire (Brand approved by EIC) in 20mm size PVC rigid conduit 'FR' (Precision make) incl. neey. fittings as required 2 x 36/0.3 (2.5 sqmm) + 1 x 22/0.3 (1.5 sqmm) FCC [PWD Schedule Page No-E-14 Item No-1a(ii)]</p>	mtr	32	127.33	4074.56
<p>Supplying and fixing double-door SPN MCB Distribution Board with IP-42/43 protection, concealed in wall after cutting the wall & mending good the damages to original finish incl. Inter connection with suitable size of copper wire and neutral link & provision for earthing attachment a) For (2+6 way) (Make -Havells) [PWD Schedule Page No-D-9;Item No-13]</p>	No	1	1148.11	1148.11
<p>Supplying and fixing 240/415 V MCB of Breaking capacity 10kA & C characteristics on din rail of existing DBs and necessary connection 6-32A SP MCB (Make -Havells) [PWD Schedule Page No-D-6;Item No-7]</p>	Nos	6	179.76	1078.56
<p>Supplying and fixing 240/415 V MCB Isolator on din rail of existing DBs and necessary connection 40A DP MCB Isolator (Make -Havells) [PWD Schedule Page No-D-5;Item No-6]</p>	Nos	1	222.56	222.56
<p>Supply of TMC501 conventional industrial batten (Philips make) LED Tube,model no-TMC 501 P1xT-LED 22W P3241 (WB I & WD schedule P-113, I- 5:3 F.22)</p>	Nos	8	464.53	3716.24
<p>Fixing only single/twin fluorescent light fitting complete with all accessories directly on wall/ceiling by screws etc. [PWD Schedule Page No-C-2;Item No-14a]</p>	Nos	8	92.02	736.16

10	Supply & fixing Bulk head light fittings with die cast aluminium housing frosted/clear glass on ceiling incl S/F 9 watt LED Lamp complete set [Make - Havells] (PWD sch - Page--D-13, I-23)	Nos	15	694.53	10417.95
11	Supply & fixing smart bright street light complete with all accessories to be fixed from the wall of building or on pole incl. making holes /providing clamping arrangement & necy. GI reducer as required S&F 40 mm GI Pipe 1.5 mtr average length & s&f necy length of 1.5 sqmm pvc insulated single core copper wire & making connections as required & mending good damages incl wall paingting. (30 Watt) (Make - Bajaj) [WB I&WD sch P-111, I-f.9.0.2]	Nos	1	3106.48	3106.48
12	Supply of 12" domestic metal exhaust fan 12" 230V 50 Hz SWEEP TRANS AIR - (Make-Crompton/Havells/Bajaj) (UD & MA schedule P-14, I-5)	Nos	6	2093.00	14651.00 12558.00
13	Fixing only exhaust fan after making hole in wall and making good damages and smooth cement finish etc. as practicable as possible and providing necy. length of PVC insulated wire and making connection for exhaust of following diameter: 30 cm (12") [PWD Schedule Page No-C-4;Iteam No-28(b)]	Nos	6	352.03	2112.18
14	Fixing only louver shutter/cowl on wall with necy. bolts & nuts (6 mm dia x 62 mm long) For 30 cm(12") Exhaust fan [PWD Schedule Page No-C-4;Iteam No-30(b)]	Nos	6	117.70	706.20
15	S/F 240V 25A Modular type starter (brand approved by EIC)with 25 A. Modular switch DP MCB (C-Curve)and 4 Module G.I. Moduar type switch board with 4 Module Top Cover Plate flushed in wall incl. S/F switch board and Cover Plate and making necy. Connections with PVC Copper wire and earth connectivity wire etc. as per schedule [for Pump] [PWD Schedule Page No-E-19, Item No-17] (Please follow in details)	Nos	1	838.88	838.88

16	Supply of 240V A.C Ceiling Fan (48" sweep, 1200 mm complete) [Make-Crompton] for counter only] (UD & MA schedule P- 23, I- 70)	Each	1	2283.00	2283.00	
17	Fixing only Ceiling Fan [PWD sch P- C-3, I-21(a)]	Each	1	70.62	70.62	
18	Supply & Fixing 240 V, 16/20 A Piano key type switch (Brand approved by TIC) on sheet metal switch board incl. S & F 100x100x65mm MS (16SWG) switch board and bakelite/perspex top cover of 3mm thick by Brass screws after making housing for switch by cutting bakelite/perspex cover and making necessary connections as required (For Hand Dryer machine) [PWD sch P- E-6, I-17(b)]	Each	2	215.07	430.14	
19	Supply and Fixing of 2 mm Polyvinyl glow sign board made of 22 SWG GI sheet box with 1"X1" aluminum channel for fixing the vinyl board after necessary cutting the letter as required & sm LED tube light fittings along with all accessories. (16 sqft @495.00/sqft) (UD & MA schedule P-14, I-4)	Nos	1	7920.00	7920.00	
20	Earthing installation by GI earth Spike (1830 X 20 mm) including 8SWG GI EarthWire & GI nuts, bolts, washer etc.	Nos	1	450.00	450.00	
					Total	80931.21
					Add 18% GST	14567.62
					Total With GST (A)	95498.83
					Cess@1%	954.99
					total	96453.82
					Contingency@3%	2864.96
Contingency Amount on "A"					2793.41	99318.78
					Total	99318.78
					Say Rs.	99319.00
Service Connection Charges as per Quotation						

Say Rs. 96,838.00

Technically Vetted Rs. 96,838.00
(Rupees Ninety Six Thousand Eight Hundred and Thirty Eight only.)

Jr. Engineer-In Charge
Maynaguri Municipality

Chairman
Maynaguri Municipality

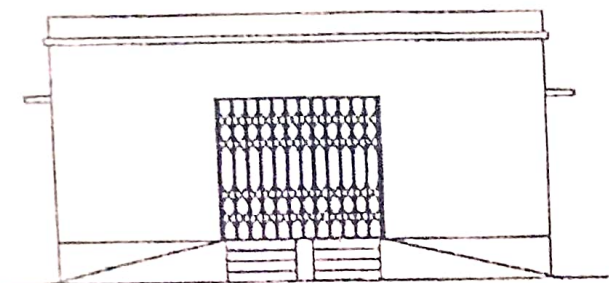
Executive Officer
Maynaguri Municipality

60
20.05.25
Junior Engineer
Electrical & Mechanical Division
SUDA

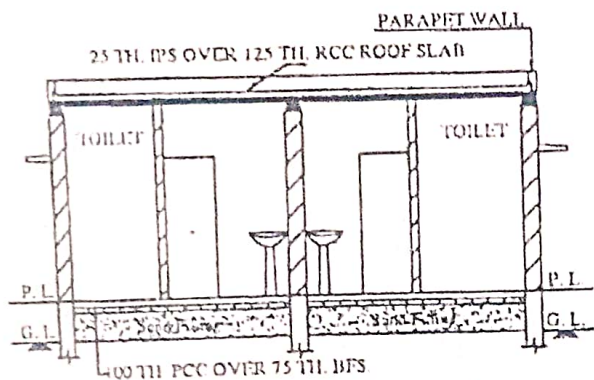
20/5/25
ASSISTANT ENGINEER
ELECTRICAL & MECHANICAL DIVISION
SUDA

20/5/25
Executive Engineer (E/M)
O/O the Secretary M.E. Dte.
Government of West Bengal

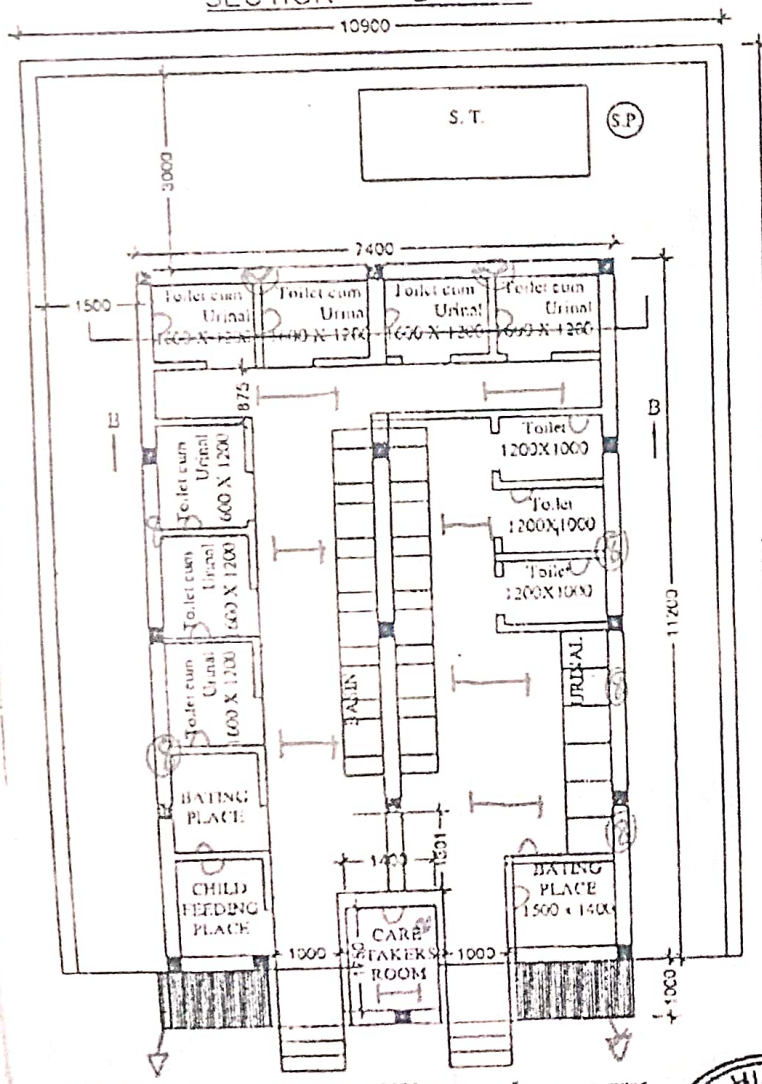
MODEL DRAWING FOR CONSTRUCTION OF C. T./P.T.
TOILET SEATS 10 NOS, URINAL 13 NOS
MODEL NO. - C



FRONT ELEVATION



SECTION - 'B - B'



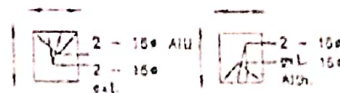
Checked & Verified

Prabin Mukhopadhyay
Engineer (Civil)

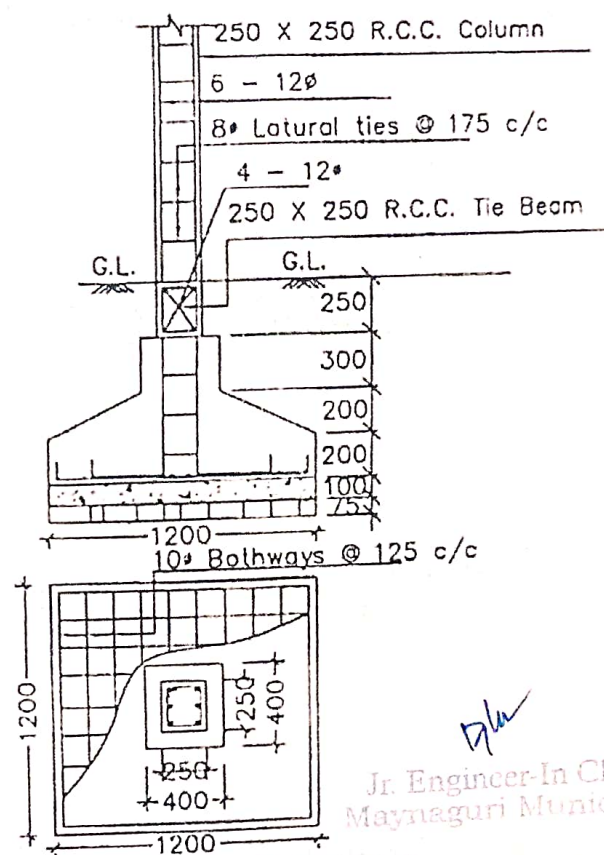


[Signature]
Chairman
Maynaguri Municipality

[Signature]
Executive Officer
Maynaguri Municipality



Details Of R.C.C Roof Slab & Beam
(SCALE - 1 : 25)



DETAILS OF R. C. C COLUMN
(SCALE - 1 : 25)

[Signature]
Jr. Engineer-In Charge
Maynaguri Municipal

- BULK HEAD LIGHT → 15
- TUBE LIGHT → 08
- EXHAUST FAN → 07 06
- OUTDOOR LIGHT → 02 01
- CEILING FAN → 01
- GLow SIGN BOARD → 01

34 PLS
32 PLS