

NAME OF WORK:- ESTIMATE FOR ELECTRICAL WORK OF (MODEL-A) 5 NOS AND URINAL- 5 NOS SEATED TOILET AT RAMPRASAD VIDYAPITH HIGH SCHOOL, WARD No.15 WITHIN HALISAHAR MUNICIPALITY  
[ASPIRATIONAL PARAMETER]

\* As per PWD & I & WD schedule district charges will be applicable on PWD & I & WD schedule items

\* No district charges will be applicable on non-schedule items

Sl No.	Item Description	Unit	Quantity	Rate	Amount
1	Distribution wiring in 1.1 KV grade 2x22/0.3 (1.5 sqmm) single core stranded 'FR' PVC insulated & unsheathed copper wire (Brand approved by EIC) in suitable size PVC casing-capping (Precision make) with 1x22/0.3 (1.5 sqmm) single core stranded 'FR' PVC insulated & unsheathed copper wire for ECC, incl. necy. PVC clips, fittings etc. to light/fan/call bell point with piano key type switch (Anchor make) fixed on sheet steel fabricated switch board with Perspex/bakelite top cover on wall incl. necy. connections and making earthing attachment and mending good damages to building works. [PVC casing-capping and Switch board both on surface] (PWD sch P- E-14, 1-2,a)	Point	15	612.00	9180.00
	Average run 5 mtr				
2	DP AC Type 30mA Rccb Supplying and fixing Sheet steel Main Switches on flat iron frame on wall 240V DP with fuse on L&N-32 A [Make- Havells] (Legrand) [PWD Schedule Page No-D-11 Item No-1(a)] (Complete Set) (ISI mark)	Nos	1	5942.00 <del>1277.00</del>	1277.00 5942.00
3	Wiring in 1.1 KV grade single core stranded 'FR' PVC insulated & unsheathed copper wire (Brand approved by EIC) of following sizes in 25mm PVC casing-capping (Precision make) incl. necy. PVC clips, fittings etc. 2 x 36/0.3 (2.5 sqmm) + 1 x 22/0.3 (1.5 sqmm) ECC (PWD Schedule Page No-E-14 Item No-1a)	mtr	<del>15</del> 20	102.00 119.00	1530.00 2380.00
4	Supplying and fixing MCB SS enclosure with IP-20/30 protection, powder coated provision for two/four pole MCB, concealed in wall after cutting the wall & mending good the damages to original finish incl. painting, connection & provision for earthing attachment (4 way MCB enclosure) (2+4) way [PWD SCH P-D.9 Item-1] incl 40A DP MCB Isolator (Make-Havells) (PWD - D/5, I/6)	No	1	(935+208) = 1143.00 316.00	316.00 1143.00

5	Supplying and fixing 240/415 V MCB of Breaking capacity 10kA & C characteristics on din rail of existing DBs and necessary connection 6-32A SP MCB (Make -Havells) [PWD Schedule Page No-D-6;Item No-7]	Nos	4	168.00	672.00
6	Supply of TMC501 conventional industrial batten philips LED Tube,model no- TMC501 P1xT-LED 22W P3241 (WB I & WD schedule P-113, I- 5:3 F.22)	Nos	4	451.00	1804.00
7	Fixing only single/twin fluroscnet light fitting complete with all accessories directly on wall/ceiling by screws etc.. [PWD Schedule Page No-C-2;Item No-14a]	Nos	4	86.00	344.00
8	Supply & fixing Bulk head light fittings with die cast aluminium housing frosted/clear glass on wall/ceiling incl S/F 9 watt LED Lamp complete set. [Make - Havells] (PWD sch - Page--D-13, I-23)	Nos	6	569+ District Charges+75= 644.00	3864.00
9	Supply & fixing smart bright street light complete with all accessories to be fixed from the wall of building or on pole incl. making holes /providing clamping arrangement & necy. GI reducer as required.S&F 40 mm GI Pipe 1.5 mtr average length & s&f necy length of 1.5 sqmm pvc insulated single core copper wire & making connections as required & mending good damages incl wall paingting. (30 Watt) (Make - Bajaj) [WB I&WD sch P-5:3 , I-f.9.0.2]	Nos	1	3016.00	3016.00
10	Supply of 12" domestic metal exhaust fan 230V 50 Hz (Model- Trans Air 12" Grey) ( Make- Crompton/Havells/Bajaj) (UD & MA schedule P-14, I-5)	Nos	3	2093.00	6279.00
11	Fixing only exhaust fan after making hole in wall and making good damages and smooth cement finish etc. as practicable as possible and providing necy. length of PVC insulated wire and making connection for exhaust of following diameter: 30 cm (12") [PWD Schedule Page No-C-4;Item No-28(b)]	Nos	3	329.00	987.00

12	Fixing only louver shutter/cowl on wall with necy. bolts & nuts (6 mm dia x 62 mm long) For 30 cm(12") Exhaust fan Schedule Page No-C-4;Item No-28(b)]	Nos	3	110.00	330.00
13	S/F 240V 25A Modular type starter (brand approved by EIC)with 25 A. Modular switch DP MCB (C-Curve)and 4 Module G.I. Moduar type switch board with 4 Module Top Cover Plate flushed in wall incl. S/F switch board and Cover Plate and making necy. Connections with PVC Copper wire and earth connectivity wire etc. as per schedule [for Pump] [PWD Schedule Page No-E-19, Item No-17] (Please follow in details)	Nos	1	784.00	784.00
14	Supply and Fixing of 2 mm Polyvinyl glow sign board made of 22 SWG GI sheet box with 1"X1" aluminum channel for fixing the vinyl board after necessary cutting the letter as required & s/f LED tube light fittings along with all accessories. (16 sqft @495.00/sqft) (UD & MA schedule P-14, I-4)	Nos	1	7920.00	7920.00
15	Earthing installation by GI earth Spike (1830 X 20 mm) including 8SWG GI EarthWire & GI nuts, bolts, washer etc.	Nos	1	450.00	450.00
Total					38753.00
Add 18% GST					6975.54
Total With GST (A)					45728.54
Cess@1%					457.29
total					46185.83
Contingency Amount on "A"					
Contingency@3%					1385.57
(Total+GST)=Rs:					
Total					47571.40
Grand Total					47571.40
Say Rs.					47571.40

45095.0  
8117.10  
53212.1  
532.12  
53744.0  
1596.3  
55340.5

Say RS. 55,341.00

*Samsat N-eogi*  
Sub-Assistant Engineer  
Halisahar Municipality  
31.01.25  
Junior Engineer  
Electrical & Mechanical Division  
SUDA

*bi*  
Assistant Engineer  
Halisahar Municipality

Chairman  
Halisahar Municipality



*AS*  
30.1.25  
ASSISTANT ENGINEER  
ELECTRICAL & MECHANICAL DIVISION  
SUDA

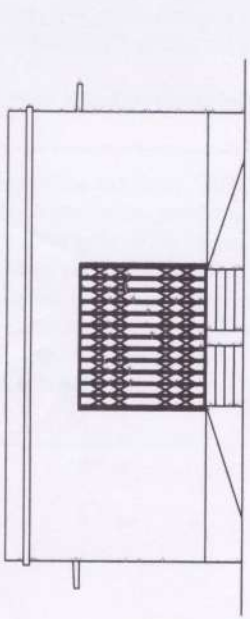
Technically Vetted Rs. 55,341.20  
(Rupees fifty five thousand three hundred forty one only)

*AS*  
31/1/25  
Executive Engineer (E/M)  
O/O the Secretary M.E. Dte.  
Government of West Bengal

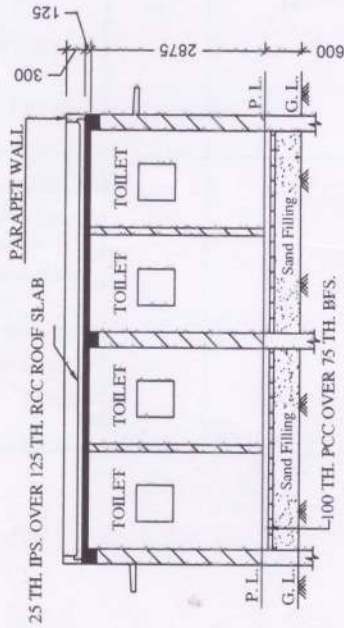
# HALISAHAR MUNICIPALITY

## PROPOSED COMMUNITY TOILET AT RAMPRASAD VIDYAPITH HIGH SCHOOL WARD NO. 15 WITHIN HALISAHAR MUNICIPALITY

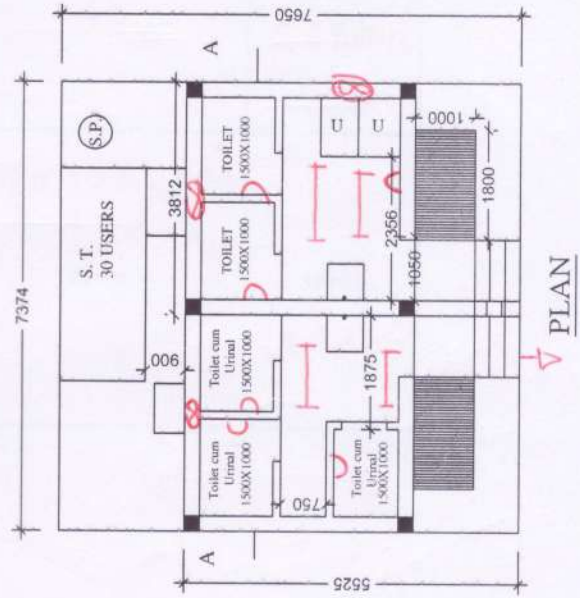
(Toilet Seats- 5 Nos, Urinal 5 Nos, MODEL No.- A)



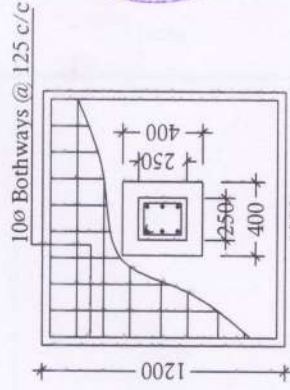
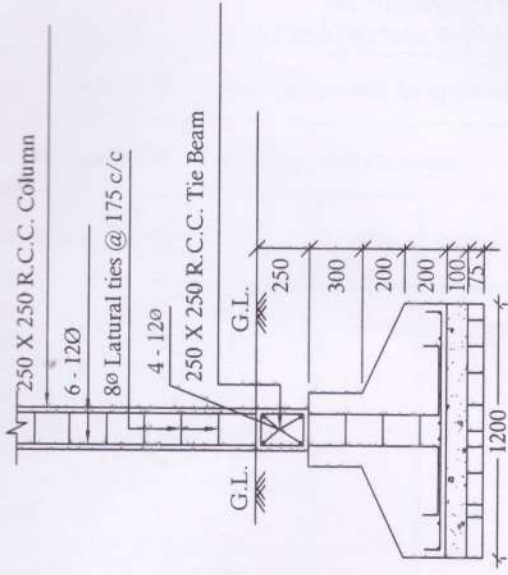
FRONT ELEVATION



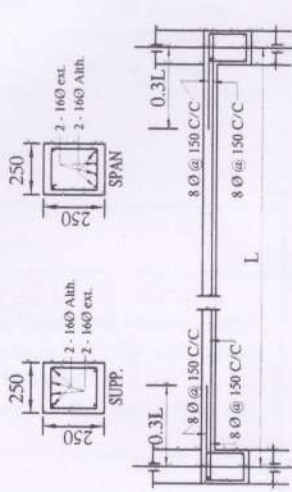
SECTION - 'A - A'



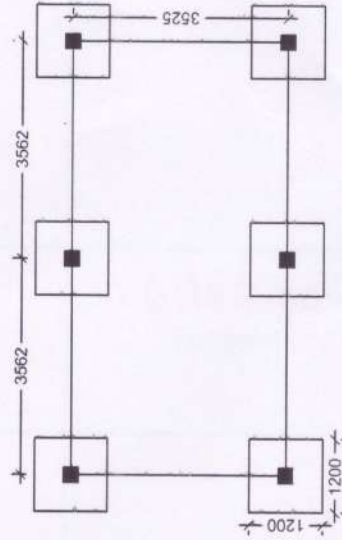
PLAN



DETAILS OF R. C. C COLUMN  
(SCALE - 1:25)



Details Of R.C.C Roof Slab & Beam.  
(SCALE - 1:25)



LAYOUT PLAN

BHP → 06  
TL → 04  
EF → 03  
OL → 01  
GrSB → 01

Samrat N-eege  
15 PK

Sub-Assistant Engineer  
Halisahar Municipality

Assistant Engineer  
Halisahar Municipality

Chairman  
Halisahar Municipality



*[Handwritten signature]*