

NAME OF WORK:- ESTIMATE FOR ELECTRICAL WORK OF (MODEL-A) 5 NOS AND URINAL- 5 NOS SEATED TOILET AT RAMPRASAD VIDYAPITH PRIMARY SCHOOL, WARD No.15 WITHIN HALISAHAR MUNICIPALITY [ASPIRATIONAL PARAMETER]

* As per PWD & I & WD schedule district charges will be applicable on PWD & I & WD schedule items

* No district charges will be applicable on non-schedule items

Sl No.	Iteam Description	Unit	Quantity	Rate	Amount
1	<p>Distribution wiring in 1.1 KV grade 2x22/0.3 (1.5 sqmm) single core stranded 'FR' PVC insulated & unsheathed copper wire (Brand approved by EIC) in suitable size PVC casing-capping (Precision make) with 1x22/0.3 (1.5 sqmm) single core stranded 'FR' PVC insulated & unsheathed copper wire for ECC, incl. necy. PVC clips, fittings etc. to light/fan/call bell point with piano key type switch (Anchor make) fixed on sheet steel fabricated switch board with Perspex/bakelite top cover on wall incl. necy. connections and making earthing attachment and mending good damages to building works. [PVC casing-capping and Switch board both on surface] (PWD sch P- E-14, 1-2,a)</p> <p>Average run 5 mtr</p>	Point	15	612.00	9180.00
2	<p>DP Ac Type 30mA RCCB Supplying and fixing Sheet steel Main Switches on flat iron frame on wall 240V DP with fuse on L&N 32 A (Make- Havells Legrand) (PWD Schedule Page No-D-1 Iteam No-1(a)) (Complete Set) (ISI mark)</p>	Nos	1	1277.00 5942.00	1277.00 5942.00
3	<p>Wiring in 1.1 KV grade single core stranded 'FR' PVC insulated & unsheathed copper wire (Brand approved by EIC) of following sizes in 25mm PVC casing-capping (Precision make) incl. necy. PVC clips, fittings etc. 2 x 36/0.3 (2.5 sqmm) + 1 x 22/0.3 (1.5 sqmm) ECC (PWD Schedule Page No-E-14 Iteam No-1a)</p>	mtr	15 20	102.00 119.00	1530.00 2380.00

4	<p>Supplying and fixing MCB SS enclosure with IP-20/30 protection, powder coated provision for two/four pole MCB, concealed in wall after cutting the wall & mending good the damages to original finish incl. painting, connection & provision for earthing attachment (+way MCB enclosure) [PWD SCH P-D.9 Item-13]</p> <p><i>(2+4) way incl 40A DP MCB Isolator (Havells) (PWD - D/5, I/6)</i></p>	No	1	<p><i>(935+208)</i></p> <p>316.00</p> <p><i>= 1143.00</i></p>	<p>316.00</p> <p><i>1143.00</i></p>
5	<p>Supplying and fixing 240/415 V MCB of Breaking capacity 10kA & C characteristics on din rail of existing DBs and necessary connection 6-32A SP MCB (Make -Havells) [PWD Schedule Page No-D-6;Item No-7]</p>	Nos	4	<p>168.00</p>	<p>672.00</p>
6	<p>Supply of TMC501 conventional industrial batten philips LED Tube,model no- TMC501 P1xT-LED 22W P3241 (WB I & WD schedule P-113, I- 5:3 F.22)</p>	Nos	4	<p>451.00</p>	<p>1804.00</p>
7	<p>Fixing only single/twin flurosent light fitting complete with all accessories directly on wall/ceiling by screws etc.. [PWD Schedule Page No-C-2;Item No-14a]</p>	Nos	4	<p>86.00</p>	<p>344.00</p>
8	<p>Supply & fixing Bulk head light fittings with die cast aluminium housing frosted/clear glass on wall/ceiling incl S/F 9 watt LED Lamp complete set. [Make - Havells] (PWD sch - Page--D-13, I-23)</p>	Nos	6	<p>569+ District Charges+75= 644.00</p>	<p>3864.00</p>
9	<p>Supply & fixing smart bright street light complete with all accessories to be fixed from the wall of building or on pole incl. making holes /providing clamping arrangement & necy. GI reducer as required.S&F 40 mm GI Pipe 1.5 mtr average length & s&f necy length of 1.5 sqmm pvc insulated single core copper wire & making connections as required & mending good damages incl wall paingting. (30 Watt) (Make - Bajaj) [WB I&WD sch P-5:3 , I-f.9.0.2]</p>	Nos	1	<p>3016.00</p>	<p>3016.00</p>
10.	<p><i>Supply & fixing 12" exhaust fan 230V 50HZ (Crompton/Havells/ Bajaj) (UD & MA Sch - P/14, I/5) PWD Sch - P-e/4, I-28b)</i></p>	Nos	3	<p><i>(2093+329)</i></p> <p><i>= 2422.00</i></p>	<p><i>7266.00</i></p>

11	Fixing only louver shutter/cowl on wall with necy. bolts & nuts (6 mm dia x 62 mm long) For 30 cm(12") Exhaust fan [PWD Schedule Page No-C-4;Item No-28(b)]	Nos	3	110.00	330.00	
12	S/F 240V 25A Modular type starter (brand approved by EIC)with 25 A. Modular switch DP MCB (C-Curve)and 4 Module G.I. Moduar type switch board with 4 Module Top Cover Plate flushed in wall incl. S/F switch board and Cover Plate and making necy. Connections with PVC Copper wire and earth connectivity wire etc. as per schedule [for Pump] [PWD Schedule Page No-E-19, Item No-17] (Please follow in details)	Nos	1	784.00	784.00	
13	Supply and Fixing of 2 mm Polyvinyl glow sign board made of 22 SWG GI sheet box with 1"X1" aluminum channel for fixing the vinyl board after necessary cutting the letter as required & s/f LED tube light fittings along with all accessories. (16 sqft @495.00/sqft) (UD & MA schedule P-14, I-4)	Nos	1	7920.00	7920.00	
14	Earthing installation by GI earth Spike (1830 X 20 mm) including 8SWG GI EarthWire & GI nuts, bolts, washer etc.	Nos	1	450.00	450.00	
				Total	45095.00	38753.00
				Add 18% GST	8117.10	6975.54
				Total With GST (A)	53212.10	45728.54
				Cess@1%	532.12	457.29
				total	53744.22	46185.83
Contingency Amount on "A"				Contingency@3%	1596.36	1385.57
(Total+GST)=Rs:				Total	55340.58	47571.40
				Grand Total		47571.40
				Say Rs.		47571.40

Say Rs. 55,341.00

31.01.25
Junior Engineer
Electrical & Mechanical Division
SUDA

Samrat Neogi
Sub-Assistant Engineer
Halisahar Municipality

Assistant Engineer
Halisahar Municipality

Chairman
Halisahar Municipality

30.1.25
ASSISTANT ENGINEER
ELECTRICAL & MECHANICAL DIVISION
SUDA



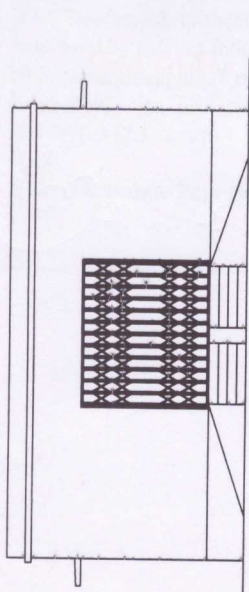
Technically Vetted Rs. 55,341.00
(Rupees Fifty five thousand three hundred forty one 00)

31/1/25
Executive Engineer (E/M)
O/O the Secretary M.E. Dte.
Government of West Bengal

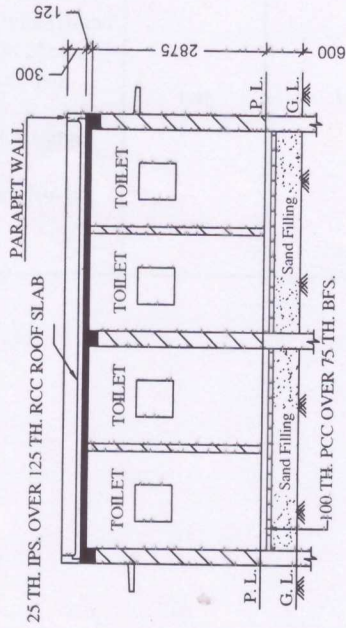
HALISAHAR MUNICIPALITY

PROPOSED COMMUNITY TOILET AT RAMPRASAD VIDYAPITH PRIMARY SCHOOL WARD NO. 15 WITHIN HALISAHAR MUNICIPALITY.

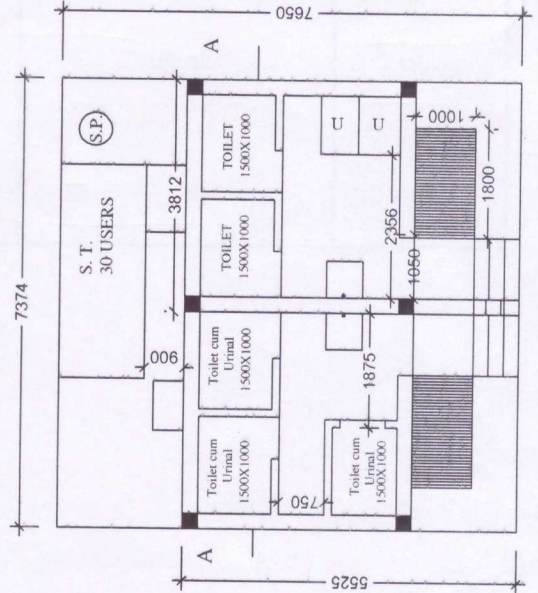
(Toilet Seats- 5 Nos, Urinal 5 Nos, MODEL No.- A)



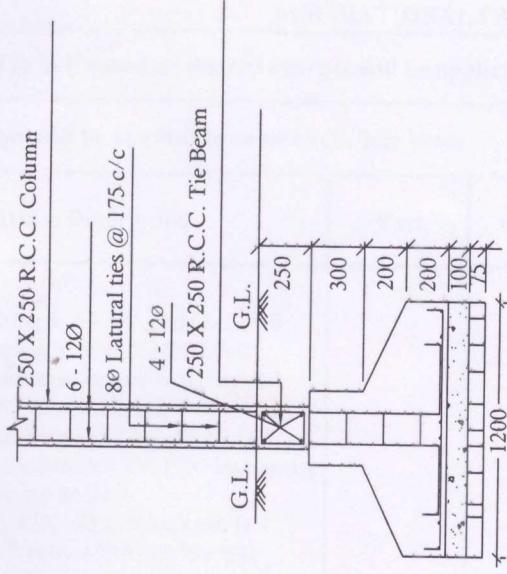
FRONT ELEVATION



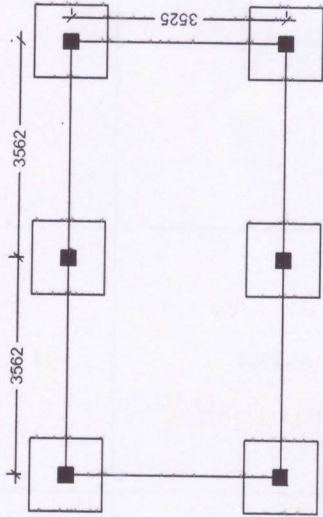
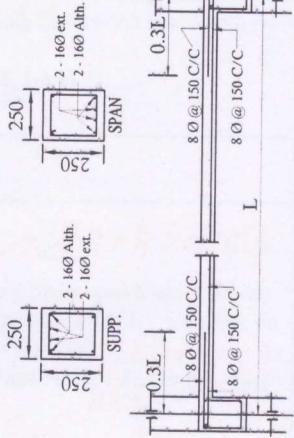
SECTION - 'A - A'



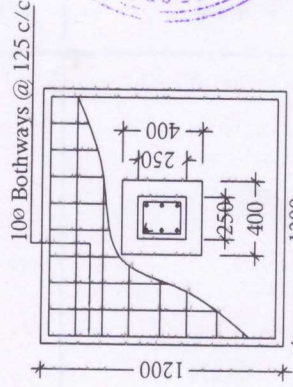
PLAN



Details Of R.C.C Roof Slab & Beam
(SCALE - 1 : 25)



LAYOUT PLAN



DETAILS OF R. C. C COLUMN
(SCALE - 1 : 25)



[Handwritten signature]

[Handwritten signature]

*BHLP -> 06
TL -> 04
EF -> 03
OL -> 01
G-SB -> 01
15 Pts
Samrat Neegi*

Sub-Assistant Engineer
Halisahar Municipality

Assistant Engineer
Halisahar Municipality

Chairman
Halisahar Municipality