

**NAME OF WORK:- ESTIMATE FOR ELECTRICAL WORK OF (MODEL-E) 7 NOS AND URINAL- 10 NOS SEATED TOILET AT URUSH UTSAB GROUND AT WARD NO. 18, WITHIN HALISAHAR MUNICIPALITY**

\* As per PWD & I & WD schedule district charges will be applicable on PWD & I & WD schedule items

\* No district charges will be applicable on non-schedule items

SI No.	Item Description	Unit	Quantity	Rate	Amount
1	<p>Distribution wiring in 1.1 KV grade 2x22/0.3 (1.5 sqmm) single core stranded 'FR' PVC insulated &amp; unsheathed copper wire (Brand approved by EIC) in suitable size PVC casing-capping (Precision make) with 1x22/0.3 (1.5 sqmm) single core stranded 'FR' PVC insulated &amp; unsheathed copper wire for ECC, incl. necy. PVC clips, fittings etc. to light/fan/call bell point with piano key type switch (Anchor make) fixed on sheet steel fabricated switch board with Perspex/bakelite top cover on wall incl. necy. connections and making earthing attachment and mending good damages to building works. [PVC casing-capping and Switch board both on surface] (PWD sch P- E-14, I-2,a)</p> <p><i>Kind Condu</i></p>	Point	<del>20</del> 21	612.00	<del>12240.00</del> 12852.00
	Average run 5 mtr				
2	<p>Distribution Wiring in 1.1 KV grade 2x22/0.3 (1.5 sqmm) single core stranded 'FR' PVC insulated &amp; unsheathed copper wire (Brand approved by EIC) in suitable size PVC casing-capping (Precision make) with 1x22/0.3 (1.5 sqmm) single core stranded 'FR' PVC insulated &amp; unsheathed copper wire for ECC, incl. necy. PVC clips, fittings etc. to 5A 3 pin flush type plug socket with piano key type switch (Anchor make) fixed on sheet steel fabricated CRC MS switch board with bakelite/perspex (wall matching color) top cover of 3 mm thick flushed in wall by housing the board after cutting brick wall incl. necy. connection making earthing attachment, painting and mending good damages to building works [PVC casing-capping and plug box both on surface] On Board (only for pay counter) (PWD Schedule Page No-E-12, I-6) <i>E-15, 4 e)</i></p> <p><i>Kind Condu</i></p>	Point	1	67.00	67.00

3	<p>DP AC Type 30 mA RCCB          Supplying and fixing <del>Sheet steel</del> Main Switches on flat iron frame on wall 240V DP with fuse on L&amp;N-32 A (Make- <del>Havells</del> Legrand )          [PWD Schedule Page No-D-1 Item No-1(a)]          (Complete Set) (ISI)</p>	Nos	1	<del>1277.00</del> 5942.00	<del>1277.00</del> 5942.00
4	<p>Wiring in 1.1 KV grade single core stranded 'FR' PVC insulated &amp; unsheathed copper wire (Brand approved by EIC) of following sizes in 25mm PVC casing-capping (Precision make) incl. necy. PVC clips, fittings etc.          2 x 36/0.3 (2.5 sqmm) + 1 x 22/0.3 (1.5 sqmm)          ECC          [PWD Schedule Page No-E-14 Item No-14)</p>	mtr	20	<del>102.00</del> 119.00	<del>2040.00</del> 2380.00
5	<p>Supplying and fixing MCB SS enclosure with IP-20/30 protection, powder coated provision for two/four pole MCB, concealed in wall after cutting the wall &amp; mending good the damages to original finish incl. painting, (2+6) way connection &amp; provision for earthing attachment (4 way MCB enclosure) incl 40A DP MCB Isolator (Havells)          (PWD-D/5, I/6)</p>	No	1	<del>1073+208</del> <del>316.00</del> = 1281.00	<del>316.00</del> 1281.00
6	<p>Supplying and fixing 240/415 V MCB of Breaking capacity 10kA &amp; C characteristics on din rail of existing DBs and necessary connection 6-32A SP MCB (Make -Havells)          [PWD Schedule Page No-D-6; Item No-7]</p>	Nos	6	168.00	<del>672.00</del> 1008.00
7	<p>Supply of TMC501 conventional industrial batten philips LED Tube, model no- TMC501 P1xT-LED 22W P3241          (WB I &amp; WD schedule P-113, I- 5:3 F.22)</p>	Nos	5	451.00	2255.00
8	<p>Fixing only single/twin fluroscent light fitting complete with all accessories directly on wall/ceiling by screws etc..          [PWD Schedule Page No-C-2; Item No-14a]</p>	Nos	5	86.00	430.00

9	Supply & fixing Bulk head light fittings with die cast aluminium housing frosted/clear glass on wall/ceiling incl S/F 9 watt LED Lamp complete set. [Make - Havells] (PWD sch - Page--D-13, I-23)	Nos	9	569+ District Charges+75= 644.00	5796.00
10	Supply & fixing smart bright street light complete with all accessories to be fixed from the wall of building or on pole incl. making holes /providing clamping arrangement & necy. GI reducer as required. S&F 40 mm GI Pipe 1.5 mtr average length & s&f necy length of 1.5 sqmm pvc insulated single core copper wire & making connections as required & mending good damages incl wall paingting. (30 Watt) (Make - Bajaj) [WB I&WD sch P-5:3 , I-f.9.0.2]	Nos	1	3016.00	3016.00
11	Supply of 12" domestic metal exhaust fan 230V 50 Hz (Model- Trans Air 12" Grey) ( Make- Crompton/Havells/Bajaj) (UD & MA schedule P-14, I-5))	Nos	4	2093.00	8372.00
12	Fixing only exhaust fan after making hole in wall and making good damages and smooth cement finish etc. as practicable as possible and providing necy. length of PVC insulated wire and making connection for exhaust of following diameter: 30 cm (12") [PWD Schedule Page No-C-4;Item No-28(b)]	Nos	4	329.00	1316.00
13	Fixing only louver shutter/cowl on wall with necy. bolts & nuts (6 mm dia x 62 mm long) For 30 cm(12") Exhaust fan [PWD Schedule Page No-C-4;Item No-28(b)]	Nos	4	110.00	440.00
14	S/F 240V 25A Modular type starter (brand approved by EIC)with 25 A. Modular switch DP MCB (C-Curve)and 4 Module G.I. Moduar type switch board with 4 Module Top Cover Plate flushed in wall incl. S/F switch board and Cover Plate and making necy. Connections with PVC Copper wire and earth connectivity wire etc. as per schedule [for Pump] [PWD Schedule Page No-E-19, Item No-17] (Please follow in details)	Nos	1	784.00	784.00

15	Supply of 240V A.C Ceiling Fan ( 48" sweep complete) [Make-Crompton [ for counter only] (UD & MA schedule P- 23, I- 70)	Each	1	2283.00	2283.00	
16	Fixing only Ceiling Fan [PWD sch P- C-3, I-21(a)]	Each	1	66.00	66.00	
17	Supply and Fixing of 2 mm Polyvinyl glow sign board made of 22 SWG GI sheet box with 1"X1" aluminum channel for fixing the vinyl board after necessary cutting the letter as required & s/f LED tube light fittings along with all accessories. (16 sqft @495.00/sqft) (UD & MA schedule P-14, I-4)	Nos	1	7920.00	7920.00	
18	Earthing installation by GI earth Spike (1830 X 20 mm) including 8SWG GI EarthWire & GI nuts, bolts, washer etc.	Nos	1	450.00	450.00	
Total					49740.00	56658.
Add 18% GST					8953.20	10198.2
Total With GST (A)					58693.20	66856.
Cess@1%					586.93	668.5
total					59280.13	67525.
Contingency Amount on "A"					1778.40	2005.1
(Total+GST)=Rs:					61058.54	69530.
<b>Grand Total</b>					<b>61058.54</b>	
Say RS.					61058.54	69531.

Say Rs. 69,531.00

*Samrat Neogi*  
Sub-Assistant Engineer  
Halisahar Municipality

*Bran*  
Assistant Engineer  
Halisahar Municipality

*[Signature]*  
Chairman  
Halisahar Municipality

*60*  
Junior Engineer  
Electrical & Mechanical Division  
SUDA

*521*  
*30.1.25*  
ASSISTANT ENGINEER  
ELECTRICAL & MECHANICAL DIVISION  
SUDA



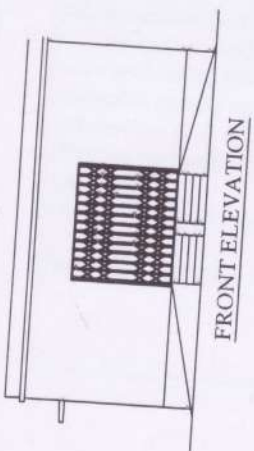
Technically Vetted Rs. 69,531.00  
(Rupees Sixty nine thousand five hundred thirty one only.)

*[Signature]*  
Executive Engineer (E/M)  
O/O the Secretary M.E. Dte.  
Government of West Bengal

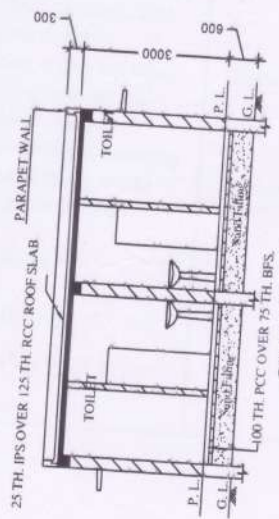
# HALISAHAR MUNICIPALITY

**PROPOSED COMMUNITY TOILET AT URUS UTSOB GROUND, WARD NO. 18,  
WITHIN HALISAHAR MUNICIPALITY.**

(Toilet Seats- 7 Nos, Urinal 10 Nos, MODEL No.- E)



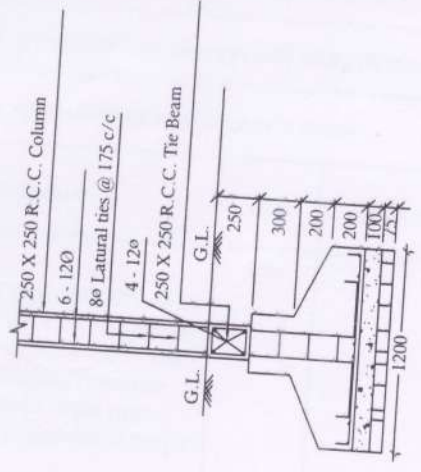
FRONT ELEVATION



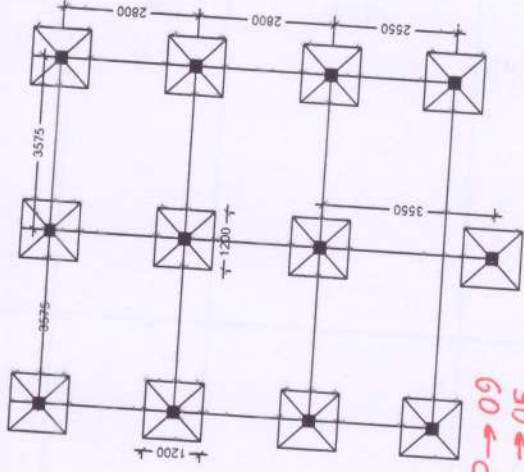
SECTION - 'B - B'



Details Of R.C.C Roof Slab & Beam  
(SCALE - 1:25)



DETAILS OF R. C. C COLUMN  
(SCALE - 1:25)



LAYOUT PLAN

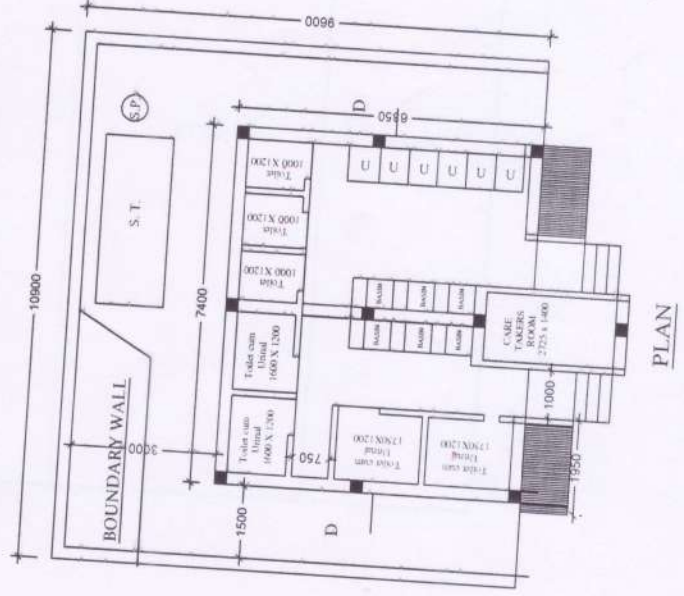
BHLP → 09  
TL → 05  
EF → 04  
OL → 01  
CF → 01  
GCSB → 01

21 Pts

Samrat N. Negi

Sub-Assistant Engineer  
Halisahar Municipality

Assistant Engineer



PLAN