

NAME OF WORK:- ESTIMATE FOR ELECTRICAL WORK OF 8 SEATED PUBLIC TOILET AT KHIRPAI SK  
 BARMON GIRLS HIGH SCHOOL IN WARD NO -03 UNDER KHIRPAI MUNICIPALITY OF WEST BENGAL

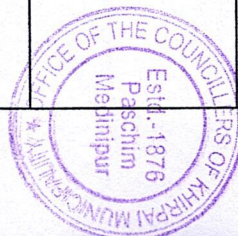
**MODEL NO - B**

[ASPIRATIONAL PARAMETER] ✓

\* As per PWD & I & WD schedule district charges will be applicable on PWD & I & WD schedule items

\* No district charges will be applicable on non-schedule items

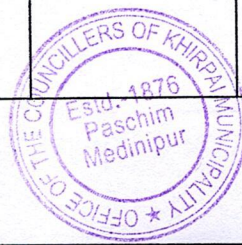
SI No.	Item Description	Unit	Quantity	Rate	Amount
1	Distribution wiring in 2 x 22/0.3 (1.5 sqmm) single core stranded 'FR' PVC insulated & unsheathed copper wire (Brand approved by EIC) in 20mm size PVC rigid conduit 'FR' (Precision make), with 1x22/0.3 (1.5 sqmm) single core stranded 'FR' PVC insulated & unsheathed copper wire for ECC, to light/fan/call bell points with Piano Key type switch fixed on MS CRC sheet metal (16 SWG) switch board cum JB on wall complete with 2 no. suitable size "Ph & N" copper bar incl. bakelite/Perspex (wall matching color) top cover 3 mm thick and incl. 175mmx100mmx65mm inspection box, making earthing attachment, painting the MS box and mending good the damages to original finish. [PWD Schedule Page No-E-14 Item No-2a]	Point	27	630.36	17019.72
	Average run 5 mtr				
2	Distribution wiring in 1.1 KV grade 22/0.3 (1.5 sqmm) single core stranded 'FR' PVC insulated & unsheathed copper wire (Brand approved by EIC) in 20mm size PVC rigid conduit 'FR' (Precision make), with 1.1 KV grade 1 x 22/0.3 (1.5 sqmm) single core stranded 'FR' PVC insulated & unsheathed copper wire as ECC, to 5A 3 pin flush type plug socket & Piano Key type switch fixed on MS CRC sheet metal (16 SWG) switch board cum JB on wall incl. bakelite/Perspex (wall matching color) top cover 3 mm thick and incl. painting the MS box and mending good the damages to original finish <b>On Board (only for pay counter)</b> [PWD Schedule Page No-E-15; I-4a]	Point	2	69.01	138.02
3	Supplying and fixing 240V 32A Double Pole AC Type 30mA RCCB.(Complete Set) (ISI marked) [Make- Legrand] (Cat No 4113/95) [Legrand Page No-92]	Nos	1	5942.00	5942.00



4	<p>ation wiring in 1.1 KV single core          'FR' PVC insulated &amp; unsheathed          copper wire (Brand approved by EIC) in 20mm          size PVC rigid conduit 'FR'          (Precision make) incl. necy. fittings as required          2 x 36/0.3 (2.5 sqmm) + 1 x 22/0.3 (1.5 sqmm)          ECC          [PWD Schedule Page No-E-14 Iteam No-1a(ii)]</p>	mtr	24	122.57	2941.68
5	<p>Supplying and fixing double-door SPN MCB          Distribution Board with IP-42/43 protection,          concealed in wall after cutting the wall &amp;          mending good the damages to original finish incl.          Inter connection with suitable size of copper wire          and neutral link &amp; provision for earthing          attachment.          a) For (2+6 way) (Make -Havells)          [PWD Schedule Page No-D-9;Iteam No-13]</p>	No	1	963.05	963.05
6	<p>Supplying and fixing 240/415 V MCB of          Breaking capacity 10kA &amp; C characteristics on          din rail of existing DBs and necessary connection          6-32A SP MCB (Make -Havells)          [PWD Schedule Page No-D-6;Iteam No-7]</p>	Nos	6	173.04	1038.24
7	<p>Supplying and fixing 240/415 V MCB Isolator on          din rail of existing DBs and necessary          connection.          40A DP MCB Isolator (Make -Havells)          [PWD Schedule Page No-D-5;Iteam No-6]</p>	Nos	1	214.24	214.24
8	<p>Supply of TMC501 conventional industrial batten          (Philips make) LED Tube,model no- TMC501          P1xT-LED 22W P3241          (WB I &amp; WD schedule P-113, I- 5:3 F.22)</p>	Nos	8	460.02	3680.16
9	<p>Fixing only single/twin fluroscent light fitting          complete with all accessories directly on          wall/ceiling by screws etc..          [PWD Schedule Page No-C-2;Iteam No-14a]</p>	Nos	8	88.58	708.64
10	<p>Supply &amp; fixing Bulk head light fittings with die          cast aluminium housing frosted/clear glass on          wall/ceiling incl S/F 9 watt LED Lamp complete          set. [Make - Havells]          (PWD sch - Page--D-13, I-23)</p>	Nos	10	671.37	6713.70
11	<p>Supply &amp; fixing smart bright street light complete          with all accessories to be fixed from the wall of          building or on pole incl. making holes /providing          clamping arrangement &amp; necy. GI reducer as          required.S&amp;F 40 mm GI Pipe 1.5 mtr average          length &amp; s&amp;f necy length of 1.5 sqmm pvc          insulated single core copper wire &amp; making          connections as required &amp; mending good          damages incl wall painting. (30 Watt) (Make -          Baja)          [WB I&amp;WD sch P-111, I-f.9.0.2]</p>	Nos	1	3076.32	3076.32



	domestic metal exhaust fan 50 Hz SWEEP. TRANS AIR - [Make-Crompton/Havells/Bajaj] (UD & MA schedule P-14, I-5))	Nos	6	2093.00	12558.00
13	Fixing only exhaust fan after making hole in wall and making good damages and smooth cement finish etc. as practicable as possible and providing necy. length of PVC insulated wire and making connection for exhaust of following diameter: 30 cm ( 12" )  [PWD Schedule Page No-C-4;Iteam No-28(b)]	Nos	6	254.41	1526.46
14	Fixing only louver shutter/cowl on wall with necy. bolts & nuts (6 mm dia x 62 mm long) For 30 cm(12") Exhaust fan  [PWD Schedule Page No-C-4;Iteam No-30(b)]	Nos	6	84.46	506.76
15	S/F 240V 25A Modular type starter (brand approved by EIC)with 25 A. Modular switch DP MCB (C-Curve)and 4 Module G.I. Moduar type switch board with 4 Module Top Cover Plate flushed in wall incl. S/F switch board and Cover Plate and making necy. Connections with PVC Copper wire and earth connectivity wire etc. as per schedule [for Pump] [PWD Schedule Page No-E-19, Item No-17] (Please follow in details)	Nos	1	807.52	807.52
16	Supply of 240V A.C Ceiling Fan ( 48" sweep,1200 mm complete) [Make-Crompton [ for counter only] (UD & MA schedule P- 23, I- 70)	Each	1	2283.00	2283.00
17	Fixing only Ceiling Fan [PWD sch P- C-3, I-21(a)]	Each	1	67.98	67.98
18	Supply & Fixing 240 V, 16/20 A Piano key type switch (Brand approved by EIC) on sheet metal switch board incl. S & F 100x100x65mm MS (16SWG) switch board and bakelite/perspex top cover of 3mm thick by Brass screws after making housing for switch by cutting bakelite/perspex cover and making necessary connections as required. (For Hand Dryer machine) [PWD sch P- E-6, I-17(b)]	Each	2	207.03	414.06
19	Supply and Fixing of 2 mm Polyvinyl glow sign board made of 22 SWG GI sheet box with 1"X1" aluminum channel for fixing the vinyl board after necessary cutting the letter as required & s/f LED tube light fittings along with all accessories. (16 sqft @495.00/sqft) (UD & MA schedule P-14, I-4)	Nos	1	7920.00	7920.00



Installation by GI earth Spike (1830 X (n) including 8SWG GI Earth Wire & GI nuts, bolts, washer etc.	Nos	1	450.00	450.00
		Total		68969.55
		Add 18% GST		12414.52
		Total With GST (A)		81384.07
		Cess@1%		813.84
		total		82197.91
Contingency Amount on "A"		Contingency@3%		2441.52
(Total+GST)=Rs:		Total		84639.43
		Say Rs.		84639.00

Service Connection Charges as per Quotation

Say Rs. 84,639.00



*[Signature]*  
Sub-Assistant Engineer  
Khirpai Municipality  
Khirpai, Paschim Medinipur

*[Signature]*  
Executive Officer,  
KHIRPAI :: MUNICIPALITY

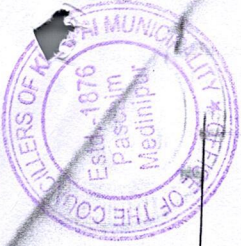
*[Signature]*  
CHAIRMAN,  
KHIRPAI MUNICIPALITY  
PASCHIM MEDINIPUR

Technically Vetted Rs.: 84,639.00  
(Rupees Eighty four Thousand Six  
Hundred Thirty nine only.)

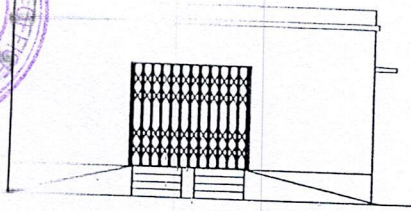
*[Signature]* 20-06-25  
Junior Engineer  
Electrical & Mechanical Division  
SUDA

*[Signature]* 23.6.25  
ASSISTANT ENGINEER  
ELECTRICAL & MECHANICAL DIVISION  
SUDA

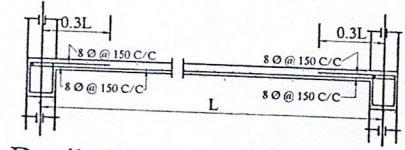
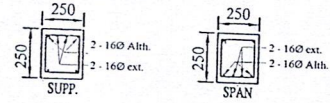
*[Signature]* 25/6/25  
Executive Engineer (E/M)  
O/O the Secretary M.E. Dte.  
Government of West Bengal



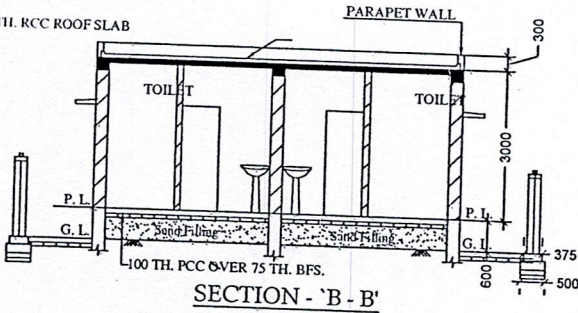
CONSTRUCTION OF COMMUNITY TOILET BLOCK ( MODEL NO - B) AT KHIRPAI SK BARMON GIRLS HIGH SCHOOL IN WARD NO -03 WITHIN KHIRPAI MUNICIPALITY UNDER SBM SCHEME  
 CIVIL WORKS  
 TOILET SEATS- 8 NOS URINAL -14 NOS



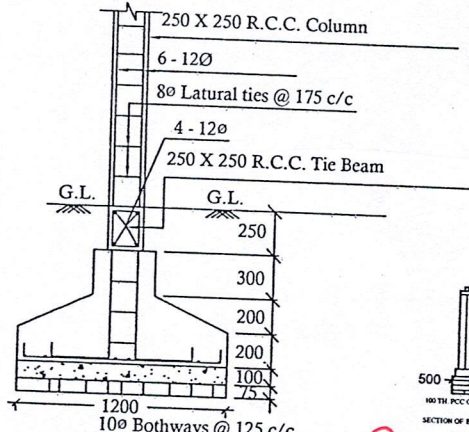
FRONT ELEVATION



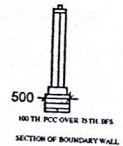
Details Of R.C.C Roof Slab & Beam  
 (SCALE - 1 : 25)



SECTION - 'B - B'



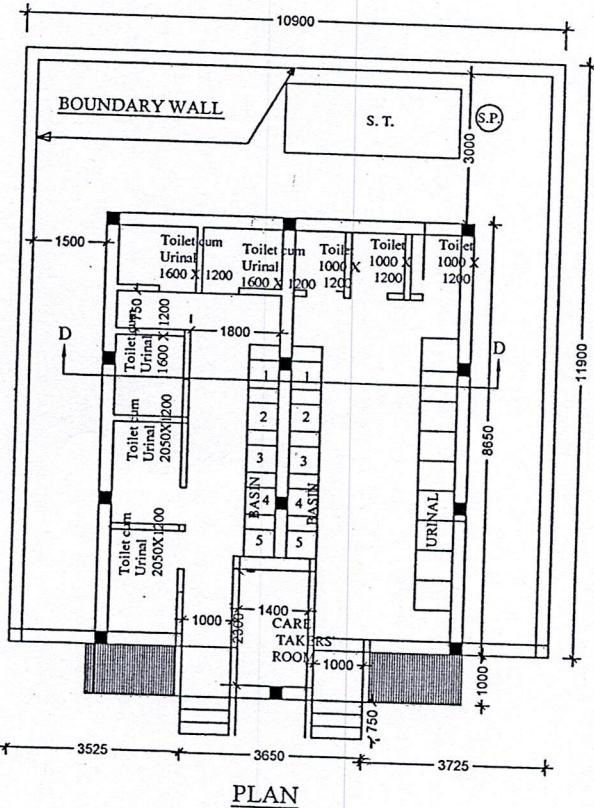
DETAILS OF R. C. C COLUMN  
 (SCALE - 1 : 25)



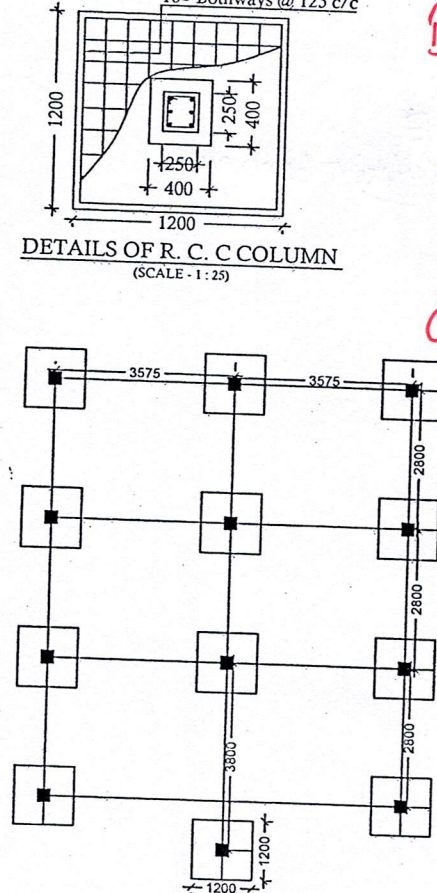
SECTION OF BOUNDARY WALL

BHLP → 10  
 TL → 08  
 EF → 06  
 OL → 01  
 CF → 01  
 GSB → 01

27 pbs



PLAN



LAYOUT PLAN

Sub-Assistant Engineer  
 Khirpai Municipality  
 Khirpai, Paschim Medinipur

Executive Officer,  
 KHIRPAI :: MUNICIPALITY

CHAIRMAN,  
 KHIRPAI MUNICIPALITY  
 PASCHIM MEDINIPUR