

NAME OF WORK:- ESTIMATE FOR ELECTRICAL WORK OF 8 SEATED PUBLIC TOILET AT KHIRPAI RURAL HOSPITAL IN WARD NO -05 UNDER KHIRPAI MUNICIPALITY OF WEST BENGAL (MODEL NO - C) [ASPIRATIONAL PARAMETER]

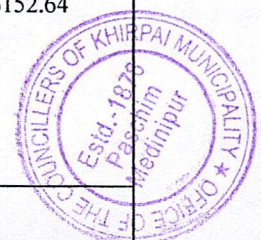
* As per PWD & I & WD schedule district charges will be applicable on PWD & I & WD schedule items

* No district charges will be applicable on non-schedule items

SI No.	Iteam Description	Unit	Quantity	Rate	Amount
1	Distribution wiring in 2 x 22/0.3 (1.5 sqmm) single core stranded 'FR' PVC insulated & unsheathed copper wire (Brand approved by EIC) in 20mm size PVC rigid conduit 'FR' (Precision make), with 1x22/0.3 (1.5 sqmm) single core stranded 'FR' PVC insulated & unsheathed copper wire for ECC, to light/fan/call bell points with Piano Key type switch fixed on MS CRC sheet metal (16 SWG) switch board cum JB on wall complete with 2 no. suitable size "Ph & N" copper bar incl. bakelite/Perspex (wall matching color) top cover 3 mm thick and incl. 175mmx100mmx65mm inspection box, making earthing attachment, painting the MS box and mending good the damages to original finish. [PWD Schedule Page No-E-14 Iteam No-2a]	Point	34 33	630.36	21432.24 20801.88
	Average run 5 mtr				
2	Distribution wiring in 1.1 KV grade 22/0.3 (1.5 sqmm) single core stranded 'FR' PVC insulated & unsheathed copper wire (Brand approved by EIC) in 20mm size PVC rigid conduit 'FR' (Precision make), with 1.1 KV grade 1 x 22/0.3 (1.5 sqmm) single core stranded 'FR' PVC insulated & unsheathed copper wire as ECC, to 5A 3 pin flush type plug socket & Piano Key type switch fixed on MS CRC sheet metal (16 SWG) switch board cum JB on wall incl. bakelite/Perspex (wall matching color) top cover 3 mm thick and incl. painting the MS box and mending good the damages to original finish On Board (only for pay counter) [PWD Schedule Page No-E-15; I-4a]	Point	1 2	69.01	69.01 138.02
3	Supplying and fixing 240V 32A Double Pole AC Type 30mA RCCB.(Complete Set) (ISI marked) [Make- Legrand] (Cat No 4113/95) [Legrand Page No-92]	Nos	1	5942.00	5942.00



4	<p>Distribution wiring in 1.1 KV single core stranded 'FR' PVC insulated & unsheathed copper wire (Brand approved by EIC) in 20mm size PVC rigid conduit 'FR' (Precision make) incl. necy. fittings as required 2 x 36/0.3 (2.5 sqmm) + 1 x 22/0.3 (1.5 sqmm) ECC [PWD Schedule Page No-E-14 Iteam No-1a(ii)]</p>	mtr	30	122.57	3677.10
5	<p>Supplying and fixing double-door SPN MCB Distribution Board with IP-42/43 protection, concealed in wall after cutting the wall & mending good the damages to original finish incl. Inter connection with suitable size of copper wire and neutral link & provision for earthing attachment. a) For (2+6 way) (Make -Havells) [PWD Schedule Page No-D-9;Iteam No-13]</p>	No	1	963.05	963.05
6	<p>Supplying and fixing 240/415 V MCB of Breaking capacity 10kA & C characteristics on din rail of existing DBs and necessary connection 6-32A SP MCB (Make -Havells) [PWD Schedule Page No-D-6;Iteam No-7]</p>	Nos	6	173.04	1038.24
7	<p>Supplying and fixing 240/415 V MCB Isolator on din rail of existing DBs and necessary connection. 40A DP MCB Isolator (Make -Havells) [PWD Schedule Page No-D-5;Iteam No-6]</p>	Nos	1	214.24	214.24
8	<p>Supply of TMC501 conventional industrial batten (Philips make) LED Tube,model no- TMC501 P1xT-LED 22W P3241 (WB I & WD schedule P-113, I- 5:3 F.22)</p>	Nos	8	460.02	3680.16
9	<p>Fixing only single/twin fluroscent light fitting complete with all accessories directly on wall/ceiling by screws etc.. [PWD Schedule Page No-C-2;Iteam No-14a]</p>	Nos	8	88.58	708.64
10	<p>Supply & fixing Bulk head light fittings with die cast aluminium housing frosted/clear glass on wall/ceiling incl S/F 9 watt LED Lamp complete set. [Make - Havells] (PWD sch - Page--D-13, I-23)</p>	Nos	15	671.37	10070.55
11	<p>Supply & fixing smart bright street light complete with all accessories to be fixed from the wall of building or on pole incl. making holes /providing clamping arrangement & necy. GI reducer as required.S&F 40 mm GI Pipe 1.5 mtr average length & s&f necy length of 1.5 sqmm pvc insulated single core copper wire & making connections as required & mending good damages incl wall paingting. (30 Watt) (Make - Bajaj) [WB I&WD sch P-111, I-f.9.0.2]</p>	Nos	2	3076.32	6152.64
12	<p>Supply of 12" domestic metal exhaust fan 12" 230V 50 Hz SWEEP. TRANS AIR - (Make-Crompton/Havells/Bajaj) (UD & MA schedule P-14, I-5)</p>	Nos	7 6	2093.00	14651.00 12558.00



	95249.01	total	98816.33
Contingency Amount on "A"	2829.17	Contingency@3%	2935.14
(Total+GST)=Rs:	98078.18	Total	101751.47
	98078.00	Say Rs.	101751.00

Service Connection Charges as per Quotation

Say Rs. 98,078.00



W
Sub-Assistant Engineer
Khirpai Municipality
Khirpai, Paschim Medinipur

[Signature]
Executive Officer,
KHIRPAI :: MUNICIPALITY

[Signature]
CHAIRMAN,
KHIRPAI MUNICIPALITY
PASCHIM MEDINIPUR

Technically Vetted Rs. 98,078.00

(Rupees Ninety eight Thousand Seven

empty eight only.)

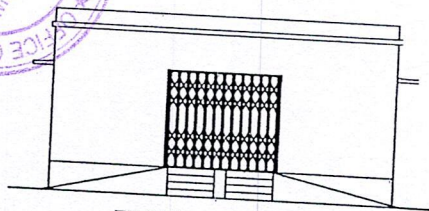
[Signature]
Junior Engineer
Electrical & Mechanical Division
SUDA

20.06.25

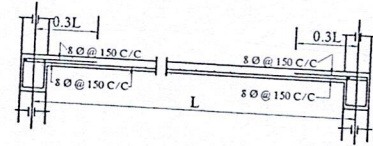
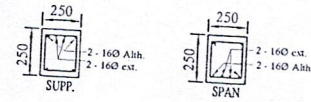
[Signature]
23.6.25
ASSISTANT ENGINEER
ELECTRICAL & MECHANICAL DIVISION
SUDA

[Signature]
25/6/25
Executive Engineer (E/M)
O/O the Secretary M.E. Dte.
Government of West Bengal

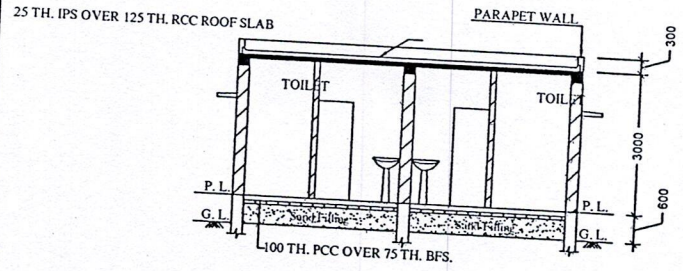
CONSTRUCTION OF COMMUNITY TOILET BLOCK (MODEL NO - C) AT KHIRPAI RURAL HOSPITAL IN WARD NO -05 WITHIN KHIRPAI MUNICIPALITY UNDER SBM SCHEME CIVIL WORKS
TOILET SEATS- 10 NOS URINAL -13 NOS



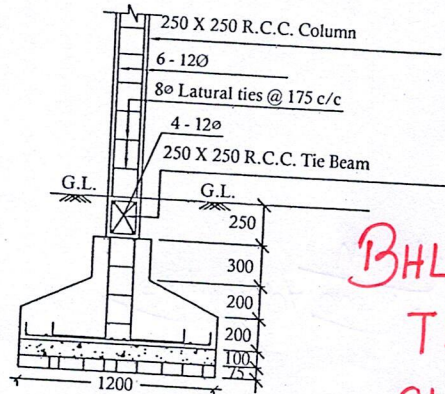
FRONT ELEVATION



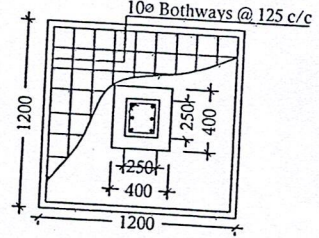
Details Of R.C.C Roof Slab & Beam
(SCALE - 1:25)



SECTION - 'B - B'

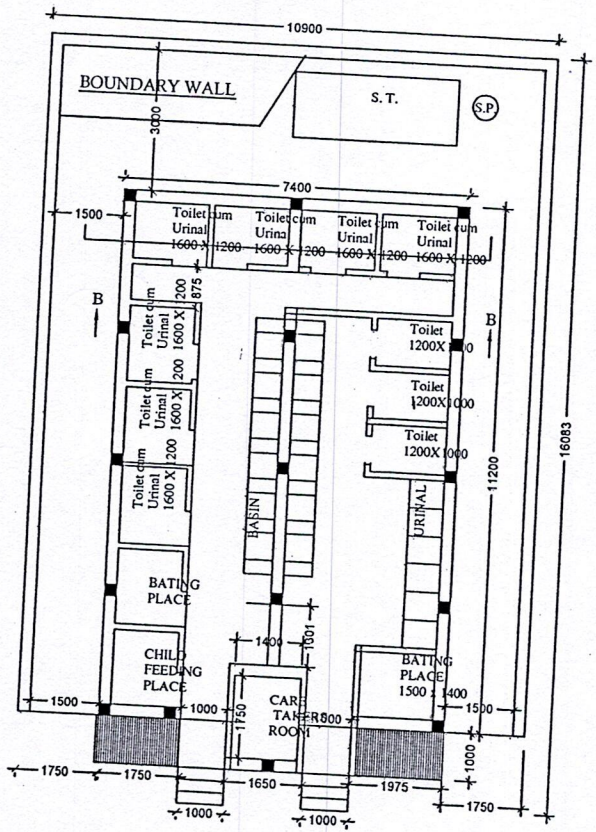


BHLP → 15
TL → 08
OL → 02
EF → 06
CF → 01
GSB → 01

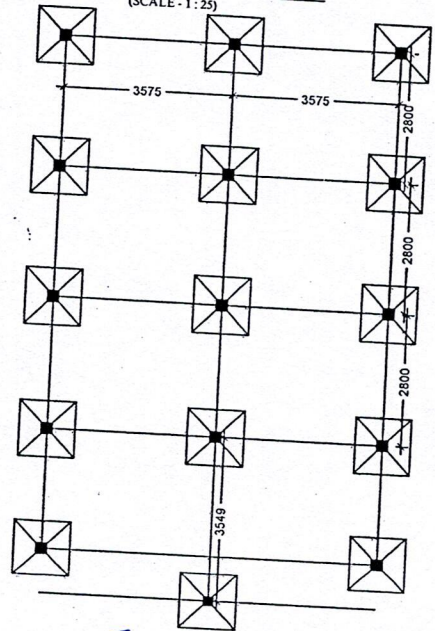


DETAILS OF R. C. C COLUMN
(SCALE - 1:25)

33 pgs



PLAN



LAYOUT PLAN

Sub- Assistant Engineer
Khirpai Municipality
Khirpai, Paschim Medinipur

Executive Officer,
KHIRPAI MUNICIPALITY
PASCHIM MEDINIPUR

CHAIRMAN,
KHIRPAI MUNICIPALITY
PASCHIM MEDINIPUR