

Scope of Work

(To be attached with all copies estimates)

RANAGHAT MUNICIPALITY

Name of Work: - PROBABLE ITEMWISE ELECTRICAL ESTIMATE FOR PUBLIC TOILET NEAR RAMKRISHNALAY (MODEL - E) IN WARD NO. 10 WITHIN RANAGHAT MUNICIPALITY UNDER ODF+ (Aspirational Parameter).

Estimated Amount: ~~91,189.00/-~~ 87,714/-

Name of Scheme/Fund: ODF+

Availability of Fund: -The fund will be available from M.A Department subject to the condition that the vetted estimate from the competent authority will have to be submitted to the Department.

Nature of work: - Original Construction and Commissioning Works.

Details of the work

1. Electrical Estimate for Public Toilet

Location- 1	PUBLIC TOILET NEAR RAMKRISHNALAY (MODEL - E) IN WARD NO. 10
Specification / Cross Section:	Attached Herewith
Drawing Ref. (if any):	Attached Herewith
Detail Quantity Calculation:	Attached Herewith
Analysis of Rates:	Attached Herewith
Ward Map:	Attached Herewith
Actual Photograph:	Attached Herewith


29/12/2025

Sub- Assistant Engineer

Ranaghat Municipality
Sub Assistant Engineer
Ranaghat Municipality

Assistant Engineer

Ranaghat Municipality


Chairman
Ranaghat Municipality

Sub Assistant Engineer
Ranaghat Municipality
Ranaghat Municipality

**PROBABLE ITEMWISE ELECTRICAL ESTIMATE FOR PUBLIC TOILET NEAR RAMKRISHNALAY (MODEL - E) IN WARD NO. 10
WITHIN RANAGHAT MUNICIPALITY UNDER ODF+, (Aspirational Parameter).**

{Based on P.W.D Schedule of rates for Electrical works effective from 1st November, 2017, UD & MA Schedule of rates and Irrigation & Waterways Department read with subsequent corrigenda and addenda as of date}

S/No.	Item Description	Unit	Quantity	Rate	Amount
1	Distribution wiring in 2 x 22/0.3 (1.5 sqmm) single core stranded 'FR' PVC insulated & unsheathed copper wire (Brand approved by EIC) in 20mm size PVC rigid conduit 'FR' (Precision make), with 1x22/0.3 (1.5 sqmm) single core stranded 'FR' PVC insulated & unsheathed copper wire for ECC, to light/fan/call bell points with Piano Key type switch fixed on MS CRC sheet metal (16 SWG) switch board cum JB on wall complete with 2 no. suitable size "Ph & N" copper bar incl. bakelite/Perspex (wall matching color) top cover 3 mm thick and incl. 175mmx100mmx65mm inspection box, making earthing attachment, painting the MS box and mending good the damages to original finish. [PWD Schedule Page No-E-14 Item No-2a] DISTRICT CHARGES ADDED @ 3.00 %.	Point	25 21	₹ 630.36	₹ 15,759.00 13237.56
	Average run 5 mtr				
2	Distribution wiring in 1.1 KV grade 22/0.3 (1.5 sqmm) single core stranded 'FR' PVC insulated & unsheathed copper wire (Brand approved by EIC) in 20mm size PVC rigid conduit 'FR' (Precision make), with 1.1 KV grade 1 x 22/0.3 (1.5 sqmm) single core stranded 'FR' PVC insulated & unsheathed copper wire as ECC, to 5A 3 pin flush type plug socket & Piano Key type switch fixed on MS CRC sheet metal (16 SWG) switch board cum JB on wall incl. bakelite/Perspex (wall matching color) top cover 3 mm thick and incl. painting the MS box and mending good the damages to original finish. On Board. (only for pay counter) [PWD Schedule Page No-E-15; 1-4a] DISTRICT CHARGES ADDED @ 1.00 %.	Point	1 2	₹ 69.01	₹ 69.01 138.02
3	Supplying and fixing 240V 32A Double Pole AC Type 30mA RCCB.(Complete Set) (ISI marked) [Make- Legrand] (Cat No 4113/95) [Legrand Page No-92] NO DISTRICT CHARGES ADDED.	Nos	1	₹ 5,942.00	₹ 5,942.00
4	Distribution wiring in 1.1 KV single core stranded 'FR' PVC insulated & unsheathed copper wire (Brand approved by EIC) in 20mm size PVC rigid conduit 'FR' (Precision make) incl. necy. fittings as required. ii) 2 x 36/0.3 (2.5 sqmm) + 1 x 22/0.3 (1.5 sqmm) ECC [PWD Schedule Page No-E-14 Item No-1a(ii)] DISTRICT CHARGES ADDED @ 3.00 %.	RM	25	₹ 122.57	₹ 3,064.25
5	Supplying and fixing double-door SPN MCB Distribution Board with IP-42/43 protection, concealed in wall after cutting the wall & mending good the damages to original finish incl. Inter connection with suitable size of copper wire and neutral link & provision for earthing attachment. a) For (2+4 way) (Enclosure (607710), (Make -Legrand) [PWD Schedule Page No-D-9; Item No-13] DISTRICT CHARGES ADDED @ 3.00 %.	No	1	₹ 1,221.58	₹ 1,221.58
6	Supplying and fixing 240/415 V MCB of Breaking capacity 10kA & C characteristics on din rail of existing DBs and necessary connection 6-32A SP MCB (Make -Siemens) [PWD Schedule Page No-D-6; Item No-7] DISTRICT CHARGES ADDED @ 3.00 %.	Nos	6 4	₹ 189.52	₹ 1,137.12 758.08
7	Supplying and fixing 240/415 V MCB Isolator on din rail of existing DBs and necessary connection. 40A DP MCB Isolator. (Make -Schneider) [PWD Schedule Page No-D-5; Item No-6] DISTRICT CHARGES ADDED @ 3.00 %.	Nos	1	₹ 364.62	₹ 364.62
8	Supply of TMC501 conventional industrial batten (Philips make) LED Tube, model no- TMC501 P1xT-LED 22W P3241 (WB 1 & WD schedule I- 5:3 F.22 P-113) DISTRICT CHARGES ADDED @ 1.00 %.	Nos	12	₹ 455.51	₹ 5,466.12
9	Fixing only single/twin fluroscnet light fitting complete with all accessories directly on wall/ceiling by screws etc.. [PWD Schedule Page No-C-2; Item No-14a] DISTRICT CHARGES ADDED @ 3.00 %.	Nos	12	₹ 88.58	₹ 1,062.96

SI No.	Iteam Description	Unit	Quantity	Rate	Amount
10	Supplying & Fixing bulk head light fitting (Havells make) with die cast aluminium housing & frosted glass on wall/ceiling incl. S&F 8watt CFL / 100 watts GLS lamp complete set. (PWD sch - Page--D-13, I-23) DISTRICT CHARGES ADDED @ 3.00 %. (Add: Rs. 75.00/- Extra fro 9 Watt LED lamp)	Nos	2	₹ 671.37	₹ 1,342.74
11	Supply & fixing smart bright street light complete with all accessories to be fixed from the wall of building or on pole incl. making holes /providing clamping arrangement & necy. GI reducer as required. S&F 40 mm GI Pipe 1.5 mtr average length & s&f necy length of 1.5 sqmm pvc insulated single core copper wire & making connections as required & mending good damages incl wall paingting. (30 Watt) (Make - Bajaj) [WB I&WD schedule- I-f.9.0.2.P-111] DISTRICT CHARGES ADDED @ 1.00 %.	Nos	1	₹ 3,046.16	₹ 3,046.16
12	Supply of domestic metal exhaust fan 12" (300mm)SWEEP. TRANS AIR - (Make-Crompton/Havells/Bajaj) (UD & MA schedule P-14, I-5), NO DISTRICT CHARGES ADDED.	Nos	4	₹ 2,093.00	₹ 8,372.00
13	Fixing only exhaust fan after making hole in wall and making good damages and smooth cement finish etc. as practicable as possible and providing necy. length of PVC insulated wire and making connection for exhaust of following diameter 30.0 cm (12") [PWD Schedule Page No-C-4;Iteam No-28(b)] DISTRICT CHARGES ADDED @ 3.00 %.	Nos	4	₹ 338.87	₹ 1,355.48
14	Fixing only louver shutter/cowl on wall with necy. bolts & nuts (6 mm dia x 62 mm long) For 22.5 cm(9") Exhaust fan. [PWD Schedule Page No-C-4;Iteam No-30(b)] DISTRICT CHARGES ADDED @ 3.00 %.	Nos	4	₹ 113.30	₹ 453.20
15	Supply of 240V A.C Ceiling Fan (48" sweep,1200 mm complete) [Make-Crompton] (ForPay Counter only) (UD & MA schedule P- 23, I- 70) NO DISTRICT CHARGES ADDED.	Each	1	₹ 2,283.00	₹ 2,283.00
16	Fixing only Ceiling Fan [PWD Sch P- C-3, I-21(a)] DISTRICT CHARGES ADDED @ 3.00 %.	Each	1	₹ 67.98	₹ 67.98
17	Supply & Fixing 240 V, 16/20 A Piano key type switch (Brand approved by EIC) on sheet metal switch board incl. S & F 100x100x65mm MS (16SWG) switch board and bakelite/perspex top cover of 3mm thick by Brass screws after making housing for switch by cutting bakelite/perspex cover and making necessary connections as required. (For Hand Dryer machine) [PWD Schedule P- E-6, I-17(b)] DISTRICT CHARGES ADDED @ 1.00 %.	Each	2	₹ 207.03	₹ 414.06
18	S/F 240V 25A Modular type starter (brand approved by EIC)with 25 A. Modular switch DP MCB (C-Curve)and 4 Module G.I. Moduar type switch board with 4 Module Top Cover Plate flushed in wall incl. S/F switch board and Cover Plate and making necy. Connections with PVC Copper wire and earth connectivity wire etc. as per schedule (For Pump) [PWD Schedule Page No-E-19, Item No-17] DISTRICT CHARGES ADDED @ 3.00 %.	Nos	1	₹ 807.52	₹ 807.52
19	Supply and Fixing of 2 mm Polyvinyl glow sign board made of 22 SWG GI sheet box with 1"X1" aluminum channel for fixing the vinyl board after necessary cutting the letter as required & s/f LED tube light fittings along with all accessories. (16 sqft @495.00/sqft) (UD & MA schedule P-14, I-4) NO DISTRICT CHARGES ADDED.	Nos	1	₹ 7,920.00	₹ 7,920.00
20	Excavation of soil for installation of Earth Electrode and filling & ramming. (a) For Soft Soil. [PWD Electrical Schedule Page No-G-1;Iteam No-1(a)] DISTRICT CHARGES ADDED @ 3.00 %.	CuM	2.63	₹ 221.45	₹ 582.41

Sl No.	Item Description	Unit	Quantity	Rate	Amount
21	Earthing with 50 mm dia GI pipe 3.64 mm thick x 3.04 Mts. long and 1 x 4 SWG GI (Hot Dip) wire (4 Mts. long), 13 mm dia x 80 mm long GI bolts, double nuts, double washers incl. S & F 15 mm dia GI pipe protection (1 Mts. long) to be filled with bitumen partly under the ground level and partly above ground level driven to an average depth of 3.65 Mts. below the ground level as below: By TATA-Medium GI pipe. [PWD Electrical Schedule Page No-G-1; Item No-2(a)] DISTRICT CHARGES ADDED @ 3.00 %.	Set	1	₹ 1,569.72	₹ 1,569.72
22	Supply, and fixing of 1 HP self Priming pump: Make- KSB, Peribloc-1 (UD & MA schedule P-44, I-34) NO DISTRICT CHARGES ADDED.	Set	1	₹ 6,377.00	₹ 6,377.00
				Sub Total	₹ 68,677.93
				Add GST @ 18%	₹ 12,362.03
				Total excluding labour welfare cess	₹ 81,039.96
				Add Cess @ 1%	₹ 810.40
				Total including labour welfare cess	₹ 81,850.36
				Add 3 % Contingency on "Total excluding Labour Welfare Cess"	₹ 2,431.20
				Total Estimated value of the work	₹ 84,281.56
				Add: Service Connection Charges for 2000.00 Watt as per Quotation received from W.B.S.E.D.C.L. vide application No. 3005248879	₹ 6,907.00
				Grand Total	₹ 91,188.56
				Say	₹ 91,189.00

65946.46

11852.36

77698.82

776.98

78475.80

2330.96

80806.76

87713.76

(Rupees Ninety One Thousand One Hundred and Eighty Nine Only)

Say Rs. 87,714.00

[Signature]
9/9/2025

Sub Assistant Engineer
Ranaghat Municipality

[Signature]
Ranaghat Municipality

Technically Vetted Rs.: 87,714.00

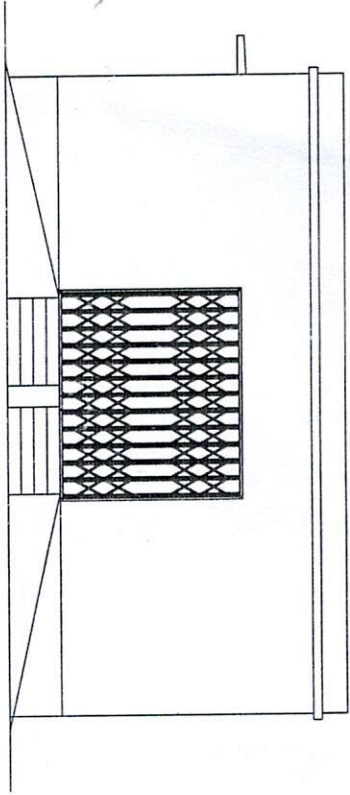
(Rupees Eighty Seven Thousand seven
Hundred fourteen only.)

15.07.25
Junior Engineer
Electrical & Mechanical Division
SUDA

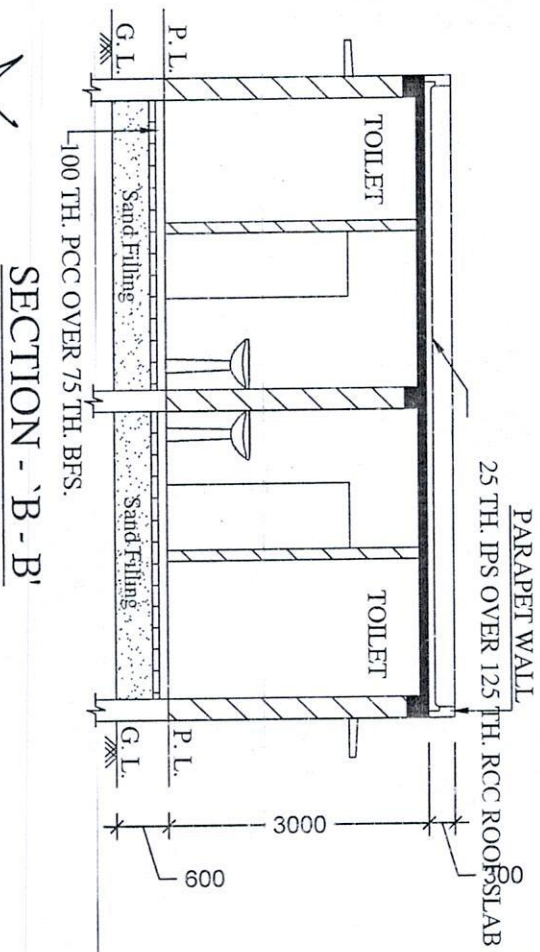
[Signature]
ASSISTANT ENGINEER
ELECTRICAL & MECHANICAL DIVISION
SUDA

[Signature]
Executive Engineer (E/M)
O/O the Secretary M.E. Dto.
Government of West Bengal

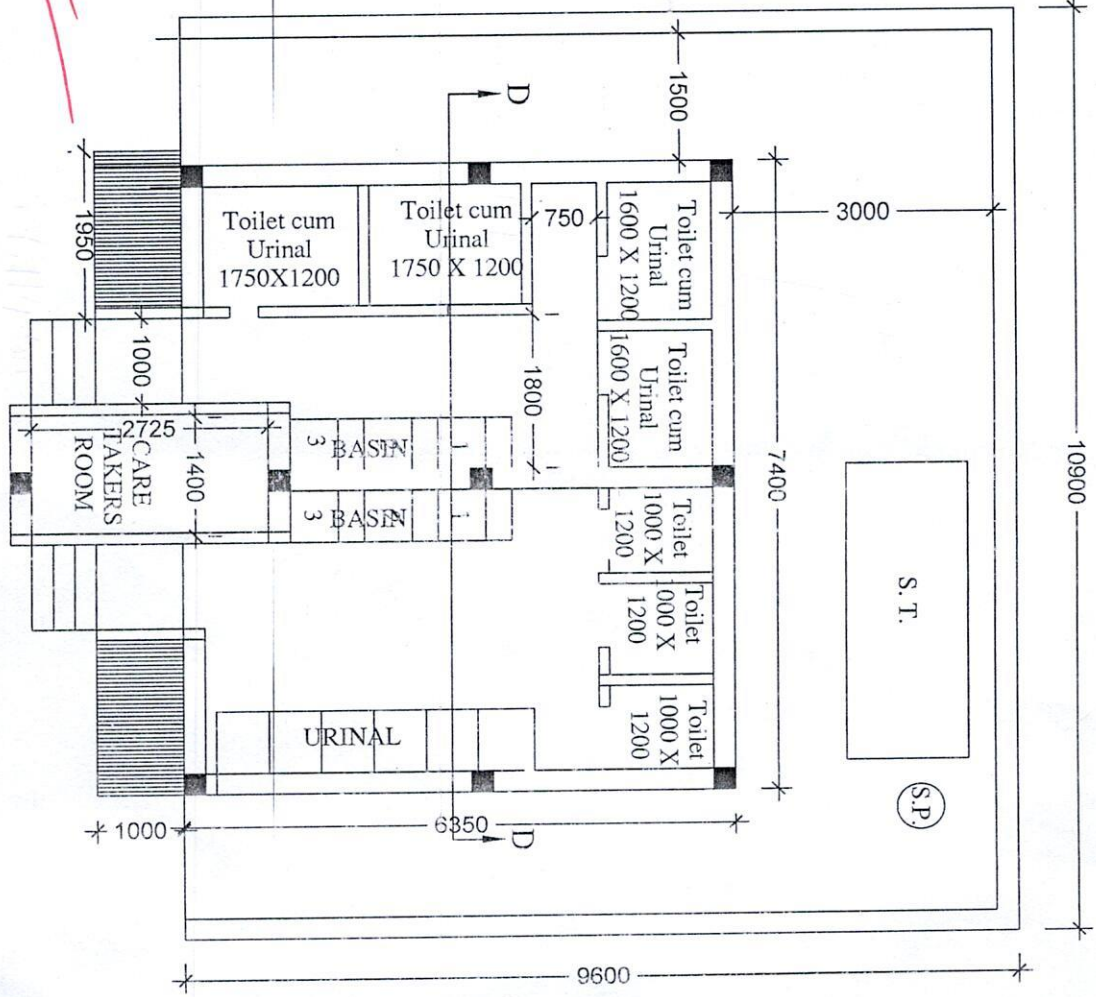
MODLE DRAWING FOR CONSTRUCTION OF C. T./PT
 TOILET SEAT 7 NOS, URINAL 10 NOS
 MODLE NO.- E



FRONT ELEVATION



SECTION - 'B-B'



PLAN

Signature
 19/11/2025

Sub Assistant Engineer
 Ranaghat Municipality