

**Costruction of Community Toilet at Ramkrishna Primary School at Ward No. 6 under Cooper's Camp Notified Area Authority  
Model No.F Electrical works.**

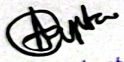
per PWD & I & WD schedule district charges will be applicable on PWD & I & WD schedule items **\* 2% District Charges**  
district charges will be applicable on non-schedule items


o.	Item Description	Unit	Quantity	Rate	Amount	Remarks
	Distribution wiring in 2 x 22/0.3 (1.5 sqmm) single core stranded 'FR' PVC insulated & unsheathed copper wire (Brand approved by EIC) in 20mm size PVC rigid conduit 'FR' (Precision make), with 1x22/0.3 (1.5 sqmm) single core stranded 'FR' PVC insulated & unsheathed copper wire for ECC, to light/fan/call bell points with Piano Key type switch fixed on Average run 5 mtr	Point	12	612.00	7344+147 = 7491.00	ADD DISTRICT CHARGES
	Distribution wiring in 1.1 KV grade 22/0.3 (1.5 sqmm) single core stranded 'FR' PVC insulated & unsheathed copper wire (Brand approved by EIC) in 20mm size PVC rigid conduit 'FR' (Precision make), with 1.1 KV grade 1 x 22/0.3 (1.5 sqmm) single core stranded 'FR' PVC insulated & unsheathed copper wire	Point	2	67.00	67+1.34=68.34 <b>136.68</b>	ADD DISTRICT CHARGES
	Supplying and fixing 240V 32A Double Pole AC Type 30mA RCCB. (Complete Set) (ISI marked) [Make- Legrand] (Cat No 4113/95) [Legrand Page No-92]	Nos	1	5942.00	5942.00	NO DISTRICT CHARGES
	Distribution wiring in 1.1 KV single core stranded 'FR' PVC insulated & unsheathed copper wire (Brand approved by EIC) in 20mm size PVC rigid conduit 'FR' (Precision make) incl. necy. fittings as required 2 x 36/0.3 (2.5 sqmm) + 1 x 22/0.3 (1.5 sqmm) ECC	mtr	12	119.00	1190+23.80=1213.80 <b>1456.56</b>	ADD DISTRICT CHARGES
	Supplying and fixing double-door SPN MCB Distribution Board with IP-42/43 protection, concealed in wall after cutting the wall & mending good the damages to original finish incl. Inter connection with suitable size of copper wire and neutral link & provision for earthing attachment. a) For (2+4 way) (Make -Havells)	No	1	935.00	935+18.70=953.70	ADD DISTRICT CHARGES
	Supplying and fixing 240/415 V MCB of Breaking capacity 10kA & C characteristics on din rail of existing DBs and necessary connection 6-32A SP MCB (Make -Havells) [PWD Schedule Page No-D-6; Item No-7]	Nos	4	168.00	672 + 13.44=685.44	ADD DISTRICT CHARGES
	Supplying and fixing 240/415 V MCB Isolator on din rail of existing DBs and necessary connection. 40A DP MCB Isolator (Make -Havells) [PWD Schedule Page No-D-5; Item No-6]	Nos	1	208.00	208+4.16=212.16	ADD DISTRICT CHARGES
	Supply of TMC501 conventional industrial batten (Philips make) LED Tube, model no-TMC501 P1xT-LED 22W P3241 (WB I & WD schedule P-113, I- 5:3 F.22)	Nos	3	451.00	1353+27.06=1380.06	ADD DISTRICT CHARGES
	Fixing only single/twin flurosent light fitting complete with all accessories directly on wall/ceiling by screws etc.. [PWD Schedule Page No-C-2; Item No-14a]	Nos	3	86.00	258+5.16=263.16	ADD DISTRICT CHARGES
	Supply & fixing Bulk head light fittings with die cast aluminium housing frosted/clear glass on wall/ceiling incl S/F 9 watt LED Lamp complete set. [Make - Havells] (PWD sch - Page-D-13, I-23)	Nos	3	369+ District Charges +75= 644.00	1932+38.64=1970.64 <b>1996.74</b>	ADD DISTRICT CHARGES
	Supply & fixing smart bright street light complete with all accessories to be fixed from the wall of building or on pole incl. making holes /providing clamping arrangement & necy. GI reducer as required. S&F 40 mm GI Pipe 1.5 mtr average length & s&f necy length of 1.5 sqmm pvc insulated single core copper wire & making connections as required & mending good damages	Nos	1	3016.00	3016+60.32=3076.32	ADD DISTRICT CHARGES
	Supply of 9" domestic metal exhaust fan 9" (225mm) SWEEP. TRANS AIR -	Nos	3	1863.00	5589.00	NO DISTRICT CHARGES
	Fixing only exhaust fan after making hole in wall and making good damages and smooth cement finish etc. as practicable as possible and providing necy. length of PVC insulated wire and making connection for exhaust of following diameter: 22.5 cm (9")	Nos	3	247.00	741+14.82=755.82	ADD DISTRICT CHARGES
	Fixing only louver shutter/cowl on wall with necy. bolts & nuts (6 mm dia x 62 mm long) For 22.5 cm(9") Exhaust fan	Nos	3	82.00	246+4.92=250.92	ADD DISTRICT CHARGES
	Supply of 240V A.C Ceiling Fan ( 48" sweep, 1200 mm complete) [Make-Crompton [ for counter only] (UD & MA schedule P- 23, I- 70)	Each	1	2283.00	2283.00	NO DISTRICT CHARGES
	Fixing only Ceiling Fan [PWD sch P- C-3, I-21(a)]	Each	1	66.00	66+1.32=67.32	ADD DISTRICT CHARGES

7	Supply & Fixing 240 V, 16/20 A Piano key type switch (Brand approved by EIC) on sheet metal switch board incl. S & F 100x100x65mm MS (16SWG) switch board and bakelite/perspex top cover of 3mm thick by Brass screws after making housing for switch by cutting bakelite/perspex cover and making necessary connections as required.	Each	<del>1</del> 2	201.00	201+4.02= <del>205.02</del> 410.04	ADD DISTRICT CHARGES	
8	S/F 240V 25A Modular type starter (brand approved by EIC) with 25 A. Modular switch DP MCB (C-Curve) and 4 Module G.I. Modular type switch board with 4 Module Top Cover Plate flushed in wall incl. S/F switch board and Cover Plate and making necy. Connections with PVC Copper wire and earth connectivity wire etc. as per schedule [for Pump]	Nos	1	784.00	784+15.68=799.68	ADD DISTRICT CHARGES	
9	Supply and Fixing of 2 mm Polyvinyl glow sign board made of 22 SWG GI sheet box with 1"X1" aluminum channel for fixing the vinyl board after necessary cutting the letter as required & s/f LED tube light fittings along with all accessories. (16 sqft @495.00/sqft) (UD & MA schedule P-14, I-4)	Nos	1	7920.00	7920.00	NO DISTRICT CHARGES	
0	Earthing installation by GI earth Spike (1830 X 20 mm) including 8SWG GI EarthWire & GI nuts, bolts, washer etc.	Nos	1	450.00	450.00	NO DISTRICT CHARGES	
					Total	41577.88	42119.60
					Add 18% GST	7483.92	7581.52
					Total With GST (A)	49061.30	4970.12
					Cess@1%	490.61	497.01
					total	49551.91	50198.13
Contingency Amount on "A"					Contingency@3%	1471.83	1491.03
(Total+GST)=Rs:					Total	51023.74	51689.16
					Say Rs.	51024.00	

Service Connection Charges as per Quotation

Say Rs. 51,689.00

  
Sub Assistant Engineer  
Cooper's Camp Notified  
Area Authority

  
Executive Officer  
Cooper's Camp Notified  
Area Authority

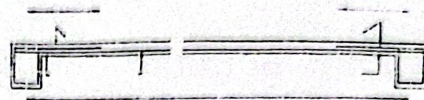
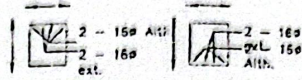
Technically Vetted Rs. 51,689.00  
(Rupees Fifty one thousand six hundred  
Eighty nine only.)

  
Junior Engineer  
Electrical & Mechanical Division  
SUDA  
16.07.25

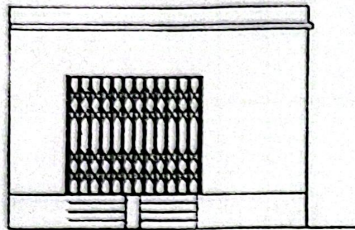
  
ASSISTANT ENGINEER  
ELECTRICAL & MECHANICAL DIVISION  
SUDA  
16.7.25

  
Executive Engineer (E.M.)  
O/O the Secretary M.E. Dto.  
Government of West Bengal  
21/7/25

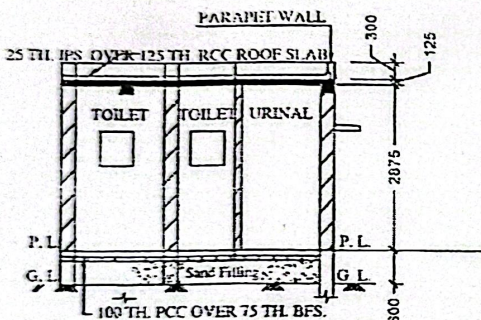
MODEL DRAWING FOR CONSTRUCTION OF C. T./P.T.  
TOILET SEATS 2 NOS URINAL 3 NOS  
MODEL NO.- F



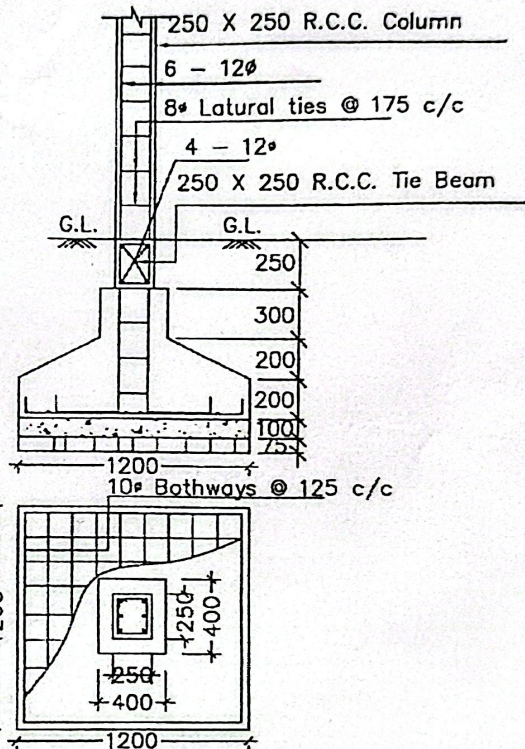
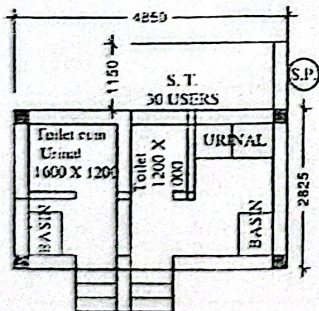
Details Of R.C.C Roof Slab & Beam  
(SCALE - 1 : 25)



FRONT ELEVATION



SECTION - 'A - A'



DETAILS OF R. C. C COLUMN  
(SCALE - 1 : 25)

- BULK HEAD LIGHT → 03
- TUBE LIGHT → 03
- EXHAUST FAN → 03
- OUTDOOR LIGHT → 01
- CELLING FAN → 01
- GLOW SIGN BOARD → 01

Checked & Verified

*Prabir*  
Engineer (Civil)  
HILL INSPIRATION



12 PLS

*Suba*  
Sub Assistant Engineer  
Cooper's Camp Notific  
Area Authority

*Executive*  
Executive Officer  
Cooper's Camp Noti.  
Area Authority