

3

ELECTRICAL WORK ESTIMATE FOR CONSTRUCTION OF PUBLIC TOILET BLOCK AT SRIFALA MORE PW(ROADS) OFFICE, P. ID NO-PROP- 02459, WARD NO. -17 UNDER RAMPURHAT MUNICIPALITY OF WEST BENGAL (MODEL NO -F), TOILET SEATS - 2 NOS AND URINAL - 3 NOS

Rate As per PWD Electrical Works (Volume 1) With effect from 01.11.2017, WB I & WD & UD & MA schedule

Sl. No.	Item Description & Item No.	Quantity	Rate	Unit	Amount
1	Distribution wiring in 1.1 KV grade 2x22/0.3 (1.5 sqmm) single core stranded 'FR' PVC insulated & unsheathed copper wire (Brand approved by EIC) in suitable size PVC casing-capping (Precision make) with 1x22/0.3 (1.5 sqmm) single core stranded 'FR' PVC insulated & unsheathed copper wire for ECC, incl. necy. PVC clips, fittings etc. to light/fan/call bell point with piano key type switch (Anchor make) fixed on sheet steel fabricated switch board with Perspex/bakelite top cover on wall incl. necy. connections and making earthing attachment and mending good damages to building works. [PVC casing-capping and Switch board both on surface] Average run 5 mtr	12	642.60	Point	7711.20
2	Distribution wiring in 1.1 KV grade 2x22/0.3 (1.5 sqmm) single core stranded 'FR' PVC insulated & unsheathed copper wire (Brand approved by EIC) in suitable size PVC casing-capping (Precision make) with 1.1 KV Grade 1x22/0.3 (1.5 sqmm) single core stranded 'FR' PVC insulated & unsheathed copper wire for ECC, to 5A 3Pin plush type plug socket and Piano Key type switch fixed on MS CRC sheet metal (16SWG) switch board cum JB on wall incl. bakelite /perspex (wall m,atching colour) top cover 3mm thick and incl. painting the MS Box and mending good the damages to original finish. On Board (only fpr pay counter) [PWD Schedule Page No- 92]	2	70.35	Nos	140.70
3	Supplying and fixing 240V 32A Double Pole AC Type 30mA RCCB (Complete Set) (ISI marked) [Make Legrand](Cat No 4113/95) [Legrand Page No-92]	1	5942.00	mtr	5942.00
4	Distribution wiring in 1.1 KV single core stranded 'FR' PVC insulated & unsheathed copper wire (Brand approved by EIC) in 20mm size PVC rigid conduit 'FR' (Precision make) incl. necy. fittings as required (i) 2 x 22/0.3 (1.5 sqmm) + 1 x 22/0.3 (1.5 sqmm) ECC PWD SCHEDULE PAGE E14 ITEM 1a (i)	12	124.95	No	1499.40
5	Supplying and fixing 240/415 V MCB of Breaking capacity 10kA & C characteristics on din rail of existing DBs and necessary connection 6-32A SP MCB (Make -Havells) [PWD Schedule Page No-D-6;Item No-7]	4	176.40	Nos	705.60
6	Supplying and fixing double-door SPN MCB Distribution Board with IP-42/43 protection, concealed in wall after cutting the wall & mending good the damages to original finish incl. Inter connection with suitable size of copper wire and neutral link & provision for earthing attachment. For 2+4way (Make-Havells) PWD SCHEDULE PAGE D-9	1	981.75	Nos	981.75

7	Supplying and fixing 240/415 V MCB Isolator on din rail of existing DBs and necessary connection. 40A DP MCB Isolator (Make Havells) PWD Schedule Page No D-5[Item No 6]	1	218.40	Nos	218.40
8	Supply of TMC 501 conventional industrial batten (Philips make) LED Tube, Model no TMC 501 PLxT-LED 22W P3241 [WB I & WD Schedule P-113,I5;3F.22]	3	460.02	Nos	1380.06
9	Fixing only single/twin fluorescent light fitting complete with all accessories directly on wall/ceiling by screws etc. [PWD SCHEDULE,PAGE C2,ITEM NO 14a]	3	90.30	Nos	270.90
10	Supplying & Fixing bulk head light fitting (Havells make) with die cast aluminium housing & frosted glass on wall/ceiling incl. S&F 8watt CFL / 100 watts GLS lamp complete set. [PWD SC. D-13,I-23]	3	682.95	Nos	2048.85
11	Supply & fixing smart bright street light complete with all accessories to be fixed from the wall of building or on pole incl. making holes /providing clamping arrangement & necy. GI reducer as required.S&F 40 mm GI Pipe 1.5 mtr average length & s&f necy length of 1.5 sqmm pvc insulated single core copper wire & making connections as required & mending good damages incl wall paingting. (30 Watt) (Make - Bajaj) [WB I&WD sch P-5:3 , I-f.9.0.2]	1	3076.32	Nos	3076.32
12	Supply of 9" domestic metal exhaust fan 9"(225mm) SWEEP TRANS AIR (Make Crompton /Havells/Bajaj) UD&MA Schedule p-14,ITEM 5)	3	1863.00	Nos	5589.00
13	Fixing only exhaust fan after making hole in wall and making good damages and smooth cement finish etc. as practicable as possible and providing necy. length of PVC insulated wire and making connection for exhaust of following diameter: 30 cm (12") [PWD Schedule Page No-C-4;Iteam No-28(b)]	3	259.35	Nos	778.05
14	Fixing only louver shutter/cowl on wall with necy. bolts & nuts (6 mm dia x 62 mm long) For 22.5 cm(12") Exhaust fan [PWD Schedule Page No-C-4;Iteam No-30(b)]	3	86.10	Nos	258.30
15	Supply of 240V A.C Ceiling Fan (48" sweep 1200 mm complete) Make Crompton UD&MA Schedule p-14,ITEM 5)	1	2283.00	Nos	2283.00
16	Fixing Only Ceiling Fan [PWD Sch P-C-3,I21a]	1	69.30	Nos	69.30
17	Supply & Fixing 240 V, 20 A Piano key type switch (Brand approved by EIC) on sheet metal switch board incl. S & F 100x100x65mm MS (16SWG) switch board and bakelite/perspex top cover of 3mm thick by Brass screws after making housing for switch by cutting bakelite/perspex cover and making necessary connections as required [PWD SC, PAGE PE-6,ITEM 17b]	2	211.05	Nos	422.10

18	Supply & Fixing 240 V, 25 A, Modular type starter (Brand approved by EIC) with 25A Modular switch type DP MCB (CCurve) and 4 Module GI Modular type switch board with 4 Module top cover plate flushed in wall incl. S&F switch board and cover plate and making necy. connections with PVC Cu wire and earth continuity wire etc. [PWD SC PAGE E-19,ITEM 17]	1	823.20	Nos	823.20
19	Supply and Fixing of 2 mm Polyvinyl glow sign board made of 22 SWG GI sheet box with 1"X1" aluminum channel for fixing the vinyl board after necessary cutting the letter as required & s/f LED tube light fittings along with all accessories. (16 sqft @495.00/sqft) (UD & MA schedule P-14, I-4)	1	7920.00	Nos	7920.00
20	Earthing installation by GI earth Spike (1830 X 20 mm) including 8SWG GI EarthWire & GI nuts, bolts, washer etc.	1	450.00	Nos	450.00
Sub Total of (C)					42568.13
Add S.G.S.T. @			9%		3831.13
Add C.G.S.T. @			9%		3831.13
Cost Of Electrical Work					50230.39
Add L.W.C. @			1%		502.30
Total payable Amount Including L.W.C.					50732.69
Say Rs.					50733.00
In Word (Say) : Rupees Fifty thousand seven hundred & thirty three only					

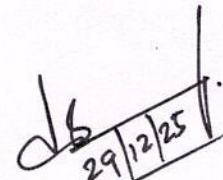

Sub-Assistant Engineer
Rampurhat Municipality
Sub-Assistant Engineer
Rampurhat Municipality
*Rampurhat * Birbhum*


Chairman
Rampurhat Municipality
Chairman
Rampurhat Municipality
Rampurhat * Birbhum

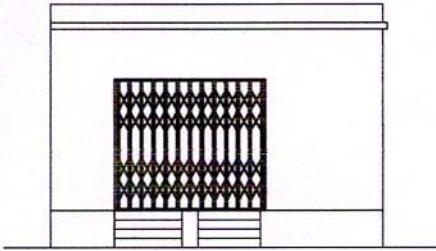
Technically Vetted Rs. **50,733.00**
(Rupees **Fifty Thousand Seven Hundred**
Thirty Three only.)


Junior Engineer 29-12-25
Electrical & Mechanical Division
SUDA

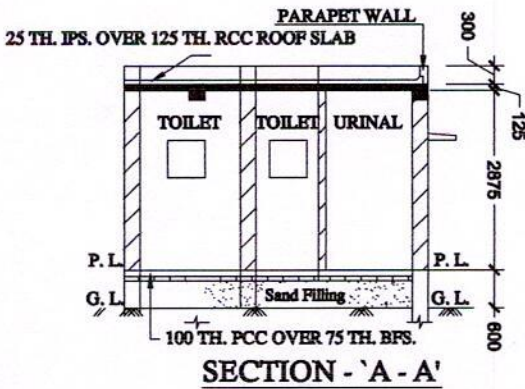

29-12-2025
ASSISTANT ENGINEER
ELECTRICAL & MECHANICAL DIVISION
SUDA


29/12/25
Executive Engineer (E/M)
O/O the Secretary M.E. Dte.
Government of West Bengal

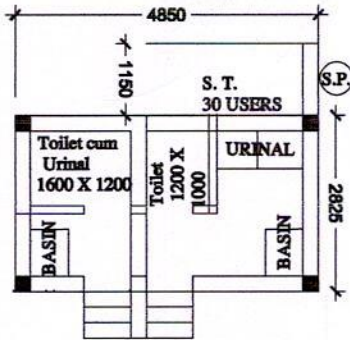
**MODLE DRAWING FOR CONSTRUCTION OF C. T./P.T.
TOILET SEATS 2 NOS URINAL 3 NOS
MODLE NO.- F**



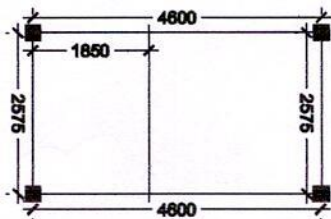
FRONT ELEVATION



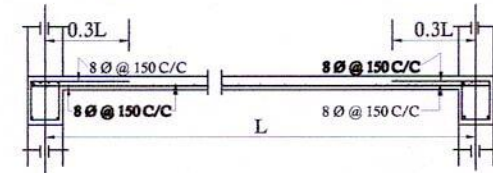
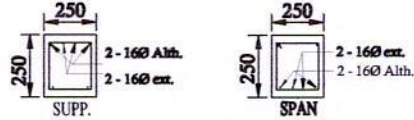
SECTION - 'A - A'



PLAN



LAYOUT PLAN

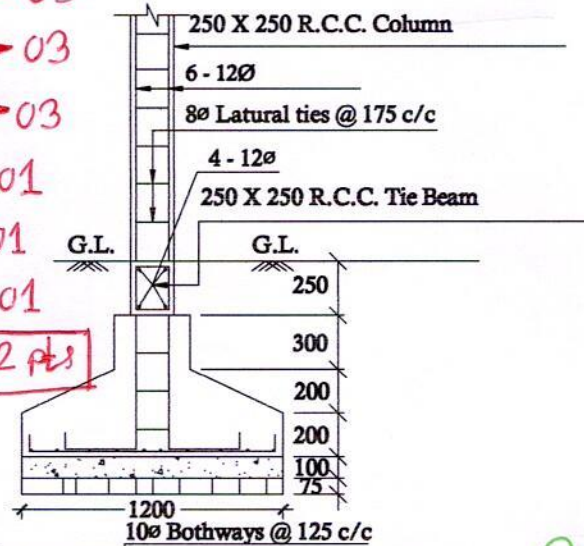


Details Of R.C.C Roof Slab & Beam

(SCALE - 1 : 25)

BHLP → 03
TL → 03
EF → 03
CF → 01
OL → 01
GSB → 01

12 Pcs



DETAILS OF R. C. C COLUMN

(SCALE - 1 : 25)

Chairman
Rampurhat Municipality
Rampurhat ★ Birbhum

Sub-Engineer
Rampurhat Municipality
Rampurhat★Birbhum