

NEW BARRACKPORE MUNICIPALITY

New Barrackpore, North 24 Parganas

SCHEDULE OF RATES

Name of Work : CONSTRUCTION OF TOILET BLOCK (CT/PT) MODEL NO - A CIVIL WORKS
TOILET SEAT- 5 NOS AND URINAL- 5 NOS , Ward No.- 4 under new Barrackpore Municipality

Reference of Schedule followed with PWD Building Works 2017 With 11th CORRIGENDA

Sl.	Description of Items.	Quantity	Unit	Rate(Rs.)	Amount(Rs.)
1	Page No.- 1, Item No.-2. Earth work in excavation of foundation trenches or drains, in all sorts of soil (including mixed soil but excluding laterite or sandstone) including removing, spreading or stacking the spoils within a lead of 75m. as directed. The item includes necessary trimming the sides of trenches, levelling, dressing and ramming the bottom, bailing out water as required complete. (a) Depth of excavation not exceeding 1,500 mm.	12.18	%Cum	11927.00	1,452.71
2	Page No.- 1, Item No.-2. Earth work in filling in foundation trenches or plinth with good earth, in layers not exceeding 150 mm. including watering and ramming etc. layer by layer complete. (Payment to be made on the basis of measurement of finished quantity of work) a) With earth obtained from excavation of foundation.	2.44	%Cum	7754.00	189.20
3	Page No.- 14, Item No.-1 Single Brick Flat Soling of picked jhama bricks including ramming and dressing bed to proper level and filling joints with local sand.	39.02	Sqm	361.00	14,086.22
4	Page No.- 23, Item No.- 1. Cement concrete with graded jhama khoa (30 mm size) excluding shuttering In ground floor and foundation. (a) 6:3:1 proportion.	1.22	Cum	4630.25	5,648.91
5	Page No.-26, Item No.-10. Ordinary Cement concrete (mix 1:1.5:3) with graded stone chips (20 mm nominal size) excluding shuttering and reinforcement if any, in ground floor as per relevant IS codes. (i) Pakur Variety	10.28	Cum	5789.21	59,513.08
6	Page No.- 42, Item No.- 36. Hire and labour charges for shuttering with centering and necessary staging upto 4 m using approved stout props and thick hard wood planks of approved thickness with required bracing for concrete slabs, beams and columns, lintels curved or straight including fitting, fixing and striking out after completion of works (upto roof of ground floor) (a) 25 mm to 30 mm thick wooden shuttering as per decision & direction of Engineer-In-Charge.	80.54	Sqm	335.00	26,980.90

Reference of Schedule followed with PWD Building Works 2017 With 11th CORRIGENDA

Sl.	Description of Items.	Quantity	Unit	Rate(Rs.)	Amount(Rs.)
7	<u>Page No.- 43, Item No.- 40.</u> Reinforcement for reinforced concrete work in all sorts of structures including distribution bars, stirrups, binders etc initial straightening and removal of loose rust (if necessary), cutting to requisite length, hooking and bending to correct shape, placing in proper position and binding with 16 guage black annealed wire at every intersection, complete as per drawing and direction. (a) For works in foundation, basement and upto roof of ground floor / upto 4 m. (i) Tor steel / Mild steel I. SAIL/ TATA/RINL	0.97	M.T.	53270.75	51,672.63
8	<u>Page No.- 24 Item No.- 4</u> 25mm. thick damp proof course with cement concrete with stone chips (1:1.5:3) [with graded stone aggregate 10 mm nominal size] and admixture of water proofing compound as per manufacturer's specification followed by two coat of polymer based paint, (1st coat after 4 to 5 days of concrete laying and 2 nd coat just before brick masonry work) as directed (cost of water proofing compound & polymer based paint to be paid separately). (Chequering not required over concrete or painted surface).	5.76	Sq. m	190.00	1,094.40
9	<u>Page No.- 2, Item No.-4.</u> (A) Filling in foundation or plinth by silver sand in layers not exceeding 150 mm as directed and consolidating the same by thorough saturation with water, ramming complete including the cost of supply of sand. (payment to be made on measurement of finished quantity)	9.19	%Cu.m	93621.00	8,603.77
10	<u>Page No.- 15, Item No.- 8.</u> Brick work with 1st class bricks in cement mortar (6:1) (a) In foundation and plinth	4.86	Cum	5367.81	26,087.56
11	<u>Page No.- 15, Item No.- 8.</u> Brick work with 1st class bricks in cement mortar (6:1) b) In superstructure, ground floor	13.95	Cum	5591.05	77,995.15
12	<u>Page No.- 16, Item No.- 16.</u> 125 mm. thick brick work with 1st class bricks in cement mortar (1:4) in ground floor.	31.70	Sqm	728.56	23,095.35
13	<u>Page No.- 192, Item No.- 1.</u> Labour for Chipping of concrete surface before taking up Plastering work.	62.31	Sqm	21.00	1,308.51
14	<u>Page No.- 189, Item No.- 2.</u> Plaster (to wall, floor, ceiling etc.) with sand and cement mortar including rounding off or chamfering corners as directed and raking out joints including throating, nosing and drip course, scaffolding/staging where necessary (Ground floor). [Excluding cost of chipping over concrete surface] (ii) With 1:4 cement mortar (c) 10 mm thick plaster	21.61	Sqm	130.71	2,824.64

Reference of Schedule followed with PWD Building Works 2017 With 11th CORRIGENDA

Sl.	Description of Items.	Quantity	Unit	Rate(Rs.)	Amount(Rs.)
15	<p><u>Page No.- 189, Item No.- 2.</u> Plaster (to wall, floor, ceiling etc.) with sand and cement mortar including rounding off or chamfering corners as directed and raking out joints including throating, nosing and drip course, scaffolding/staging where necessary (Ground floor).[Excluding cost of chipping over concrete surface]</p> <p>(i) With 6:1 cement mortar (c) 15 mm. thick plaster</p>	102.65	Sqm	148.71	15,265.08
16	<p><u>Page No.- 192, Item No.- 15.</u> Plaster (to wall, floor, ceiling etc.) with sand and cement mortar including rounding off or chamfering corners as directed and raking out joints including throating, nosing and drip course, scaffolding/staging where necessary (Ground floor).[Excluding cost of chipping over concrete surface]</p> <p>(i) With 6:1 cement mortar (b) 20 mm thick plaster</p>	121.43	Sqm	171.57	20,833.75
17	<p><u>Page No.- 192, Item No.- 15.</u> Neat cement punning about 1.5 mm. thick in wall, dado, window, sills, floor, etc.</p>	12.03	Sqm	32.85	395.19
18	<p><u>Page No.- 48, Item No.- 6.</u> Artificial stone in floor ,dado,staircaseetc with cement mortar (1:2:4)with stone chips lsied in panels as directed with topping made with ordinary or white cement (as necessary) and marbel dust in proportion (1:2) in cluding smooth finishing and rounding off corners including raking out joints or roughening of concrete surface and application of cement slurry before flooring works using cement @ 1.75 kg/ sq.m all complete including all materials and labour.</p> <p>In ground floor 3 mm thick topping using gray cement (ii)25 mm</p>	25.03	Sqm	266.01	6,658.23
19	<p><u>Page No.- 74, Item No.- 46.</u> Supplying and laying chequered tiles of any shede and of approved quality with (1:1.5:3) cement concrete laied in pannels or patterns as directed in pavement ,footpath etc including necessary underlay 25 mm thick (avg)cement mortar (1:3) complete in all respect with all labour and materials. (Using cement slurry @4.4kg/sq.m at back side and @2.4 kg/sq.m for joint filling).</p>	9.09	Sqm	471.00	4,281.39

Reference of Schedule followed with PWD Building Works 2017 With 11th CORRIGENDA

Sl.	Description of Items.	Quantity	Unit	Rate(Rs.)	Amount(Rs.)
-----	-----------------------	----------	------	-----------	-------------

20 Page No.- 66, Item No.- 35
 Supplying and laying true to line and level vitrified tiles of approved brand (size not less than 600 mm X 600 mm X 10 mm thick) in floor, skirting etc. set in 20 mm sand cement mortar (1:4) and 2 mm thick cement slurry back side of tiles using cement @ 2.91Kg./sqM or using polymerised adhesive (6 mm thick layer applied directly over finished artificial stone floor/Mosaic etc without any backing course) laid after application slurry using 1.75 Kg of cement per sqM below mortar only, joints grouted with admixture of white cement and colouring pigment to match with colour of tiles / epoxy grout materials of approved make as directed and removal of wax coating of top surface of tiles with warm water and polishing the tiles using soft and dry cloth upto mirror finish complete including the cost of materials, labour and all other incidental charges complete true to the manufacturer's specification and direction of Engineer-in-Charge. (White cement, synthetic adhesive and grout material to be supplied by the contractor).

Supplying, fitting & fixing 1st quality Ceramic tiles in walls and floors

A) Floor

b) ~~Coloured~~ Area of each tile above 0.09sqm

1) Coloured decorative

(I) With application slurry @ 1.75 kg/ Sq.m, 20 mm (A) Deep Colour & White

21.61 Sqm

920.00 19,881.20
 1704.00 36,823.44

21 Page No.- 64, Item No.- 35.
 Supplying, fitting & fixing 1st quality Ceramic tiles in walls and floors to match with the existing work & 4 nos. of key stones (10mm) fixed with araldite at the back of each tile & finishing the joints with white cement mixed with colouring oxide if required to match the colour of tiles including roughening of concrete surface, if necessary or by synthetic adhesive & grout materials etc.

(B) Wall
 With Sand Cement Mortar (1:3) 15 mm thick & 2 mm thick cement slurry at back side of tiles using cement @ 2.91 Kg/Sq.m & joint filling using white cement slurry @ 0.20kg/Sq.m.

(b) Area of each tile above 0.09 Sq.m
 (i) Coloured decorative

93.56 Mtr

1109.00 1,03,758.04
 757.00 70,824.92

22 Page No.- 115, Item No.- 3.
 Supplying, fitting and fixing fibre reinforced polymer (FRP) Composite door frame as per approved section with glass fibre reinforced plastic moulded skins and a special sandwich core, so as to impart monolithic composite structure as per approved technology of Department of Science and Technology (DST) to satisfy IS: 4020 door testing performance criteria.
 (i) 66mm x 90mm

24.75 Mtr

497.00 12,300.75

~~12226.50~~

12300.75

Reference of Schedule followed with PWD Building Works 2017 With 11th CORRIGENDA

Sl.	Description of Items.	Quantity	Unit	Rate(Rs.)	Amount(Rs.)
23	Page No.- 125, Item No.- 14. Supplying, fitting & fixing fibre reinforced polymer (FRP) Composite door shutters as per approved design with glass fibre reinforced plastic moulded skins and a special sandwich core, so as to impart monolithic composite structure as per approved technology of Department of Science and Technology (DST) to satisfy IS:4020 door testing performance criteria. In ground floor. ii) 25 mm thick	7.875	Sq.m	2581.00	20,312.47 20,326.38
24	Page No.-104. Item No.-13. (a) M.S.or W.I. Ornamental grill of approved design joints continuously welded with M.S, W.I. Flats and bars of windows, railing etc. fitted and fixed with necessary screws and lugs in ground floor. (ii) Grill weighing above 16 Kg./sq.mtr and above	0.72	Qntl	9696.00	6,981.12
25	Page No.-107. Item No.-20. Supplying, fitting and fixing windows and ventilators with or without integrated grills conforming to IS 1038-1975 and manufactured from rolled steel sections conforming to IS 7452-1974 with non-friction projecting type, box type hinges, glazing clips, lugs locking bracket, handle plate etc, including hoisting in position, straightening if required, fixing lugs in cement concrete (1:2:4) with stone chips 20 mm down cutting holes and mending good damages to match with existing surface complete in all respect excluding glazing (b) Openable steel windows as per IS sizes with side hung shutters and horizontal glazing bars. [The extra rate admissible for the openable portion only]	5.16	Sq. m	2199.00	11,346.84
26	Page No.-205. Item No.-1. Supplying best Indian sheet glass panes set in putty and fitted and fixed with nails and putty complete. (In all floors for internal wall & upto 6 m height for external wall) ii) 4 mm thick	5.16	Sq. m	536.00	2,765.76
27	Page No.-106. Item No.-18. Collapsible gate with 40 mm x 10 mm x 6 mm Tee as top and bottom guide rail , 20 mm x 10 mm x 2 mm vertical channels 100 mm apart in full stretched position 20m x 5 mm MS flats as collapsible bracings properly reveted and washered including 38 mm steel roller including locking arrangements , fitted and fixed in position with lugs set in cement concrete including cutting necessary hives chasing etc in walls , floors etc and making good all damages .	4.20	Sq. m	3402.00	14,288.40 4330.00 18,186.00
28	Page No.-198. Item No.-5. Rendering the Surface of walls and ceiling with White Cement base WATER PROOF wall putty of approved make & brand.(1.5 mm thick) In Ground Floor	148.16	Sq. m	122.00	18,075.52

Reference of Schedule followed with PWD Building Works 2017 With 11th CORRIGENDA

Sl.	Description of Items.	Quantity	Unit	Rate(Rs.)	Amount(Rs.)
29	Page No.- 195, Item No.- 7(a). Applying Interior grade Acrylic Primer of approved quality and brand on plastered or concrete surface old or new surface to receive Distemper/ Acrylic emulsion paint including scraping and preparing the surface thoroughly, complete as per manufacturer's specification and as per direction of the EIC. (In Ground Floor) (b) Two Coats i) Water based interior grade Acrylic Primer	56.14	%Sqm	4420.00	2,481.39
30	Page No.- 201, Item No.- 4. Applying Acrylic Emulsion Paint of approved make and brand on walls and ceiling including sand papering in intermediate coats including putty (to be done under specific instruction of Superintending Engineer) : (Two coats) i) Standard Quality	56.14	Sqm	62.00	3,480.68
31	Page No.- 200, Item No.- 1(a). (a) Priming one coat on steel or other metal surface with synthetic oil bound primer of approved quality including smoothening surfaces by sand papering etc.	10.32	Sqm	29.00	299.28
32	Page No.- 200, Item No.- 1(b). (b) Priming one coat on timber or plastered surface with synthetic oil bound primer of approved quality including smoothening surfaces by sand papering etc.	20.48	Sq.m	38.00	778.24
33	Page No.- 200, Item No.- 2(A)(a). (A) Painting with best quality synthetic enamel paint of approved make and brand including smoothening surface by sand papering etc. including using of approved putty etc. on the surface, if necessary : (a) On timber or plastered surface : With super gloss (hi-gloss) - (iv) Two coats (with any shade except white)	20.48	Sq.m	81.00	1,658.88
34	Page No.- 200, Item No.- 2(A)(b). (A) Painting with best quality synthetic enamel paint of approved make and brand including smoothening surface by sand papering etc. including using of approved putty etc. on the surface, if necessary : (b) On steel or other metal surface : With super gloss (hi-gloss) - (iv) Two coats (with any shade except white)	10.32	Sq.m	79.00	815.28
..					
..					
..					

Reference of Schedule followed with PWD Building Works 2017 With 11th CORRIGENDA

Sl.	Description of Items.	Quantity	Unit	Rate(Rs.)	Amount(Rs.)
35	Page No.-196 Item No.- 4 Applying exterior grade Acrylic Primer of approved quality and brand on plastered or concrete surface old and new surface to receive decorative texture (matt finish) or smooth finish acrylic exterior emulsion paint including scraping and preparing the surface throughly ,complete as per manufacturer's specification as per direction of the EIC				
	In Ground (b) Two Coats	104.05	%Sq.m	4510.00	4,692.66
36	Page No.-197. Item No.-17 Protective and Decorative Acrylic exterior Emulsion paint of approved quality ,as per direction of Engineer- in -Charge to be applied over acrylic primer as required. The rate includes cost of material ; labour ,scaffolding and all incidental charges but excluding the cost of primer				
	In Ground floor (Two Coat) (a) Normal Acrylic Emulsion	104.05	Sq.m	67.00	6,971.35
37	Page No.-74. Item No.-24 (B) Labour for fitting and fixing U.P.V.C. pipes for above ground work including cost of jointing materials etc. fitting and fixing all necessary specials, cutting pipes, cutting holes in total pipeline including specials				
	(B) Under ground, (ii) 110 mm dia.	10 24.00	Mtr	84.00	840 2,016.00
38	Page No.-212. Item No.-21 Supplying, fitting & fixing UPVC pipes A- Type and fittings conforming to IS:13592-1992 with all necessary clamps nails, including making holes in walls, floor etc. cutting trenches in any soil through masonry concrete structures etc if necessary and mending good damages including joining with jointing materails (Spun Yarn, Valamoid/Bitumen/M-Seal etc) complete.				
	A) UPVC Pipes: (i) 75 mm. Dia.	10 30.00	Mtr	188.00	1880.00 5,640.00
39	Page No.-212. Item No.-21 Supplying, fitting & fixing UPVC pipes A- Type and fittings conforming to IS:13592-1992 with all necessary clamps nails, including making holes in walls, floor etc. cutting trenches in any soil through masonry concrete structures etc if necessary and mending good damages including joining with jointing materails (Spun Yarn, Valamoid/Bitumen/M-Seal etc) complete.				
	B) UPVC Fittings: c) Bend 87.5 Degree (i) 75 mm. Dia.	2	Each	84.00	168.00

Reference of Schedule followed with PWD Building Works 2017 With 11th CORRIGENDA

Sl. No.	Description of Items.	Quantity	Unit	Rate(Rs.)	Amount(Rs.)
40	Page No.-212. Item No.-21 Supplying, fitting & fixing UPVC pipes A- Type and fittings conforming to IS:13592-1992 with all necessary clamps nails, including making holes in walls, floor etc. cutting trenches in any soil through masonry concrete structures etc if necessary and mending good damages including joining with jointing materials (Spun Yarn, Valamoid/Bitumen/M-Seal etc) complete. B) UPVC Fittings: d) Shoe (i) 75 mm. Dia.	2	Each	78.00	156.00
41	Page No.-140. Item No.-5 Iron butt hinges of approved quality fitted and fixed with steel screws, with ISI mark. viii) 100mm. X 75mm. X 1.25mm.	20	Each	66.00	1,320.00
42	Page No.-141. Item No.-10 i) Iron hasp bolt of approved quality fitted and fixed complete (oxidised) with 16mm dia rod with centre bolt and round fitting. (b) 250mm long.	5	Each	159.00	795.00
43	Page No.-144. Item No.-26 Anodised aluminium barrel / tower / socket bolt (full covered) of approved manufactured from extruded section conforming to I.S. 204/74 fitted and fixed with cadmium plated screws (vii) 225mm long x 10mm dia. bolt.	5	Each	84.00	420.00
44	Page No.-146. Item No.-31 Anodised aluminium decorative handle (hexagonal / fluted) of approved quality fitted and fixed complete. (i) 150mm plate x 10mm dia rod x 12mm hexagonal/fluted.	10	Each	87.00	870.00
45	Page No.-140. Item No.-4 Supplying, fitting and fixing M.S. clamps for door and window frame made of flat bent bar, end bifurcated with necessary screws etc. by cement concrete(1:2:4) as per direction. (Cost of concrete will be paid separately c) 40mm X 6mm, 125mm Length	30	Each	20.00	600.00
46	Page No.-268. Item No.-17 Painting block letters or digits in Black Japan or any approved paint as per direction. e) Size above 7.5 cm. and upto 10 cm.	450	Each	12.00	5,400.00
47	Page No.-261. Item No.-9 Supplying and planting of different plants / trees (supplying well grown plants bushy and healthy, minimum height as specified i.e. exposed height including all leads and lifts, carriage, handling, manuring applying pesticide and fertilizer etc. i) Furcaria Veriegated 10 to 12 leaves in height 20-30 cm in earthen pot of size 25 cm	10	Each	162.00	1,620.00

Reference of Schedule followed with PWD Building Works 2017 With 11th CORRIGENDA

Sl. No.	Description of Items.	Quantity	Unit	Rate(Rs.)	Amount(Rs.)
48	Page No.-261. Item No.-9 Supplying and planting of different plants / trees (supplying well grown plants bushy and healthy, minimum height as specified i.e. exposed height including all leads and lifts, carriage, handling, manuring applying pesticide and fertilizer etc. x) Ficus blakii (F. Vivicon) well branched (Bushy) of height 120cm - 135 cm in earthen pot of size 30cm.	3	Each	187.00	561.00
49	Page No.-261. Item No.-9 Supplying and planting of different plants / trees (supplying well grown plants bushy and healthy, minimum height as specified i.e. exposed height including all leads and lifts, carriage, handling, manuring applying pesticide and fertilizer etc. xxvi) Areca Palm 4 - 5 suckers of height 90 cm to 105 cm in earthen pots of size 25 cm.	3	Each	127.00	381.00
50	Page No.-79. Item No.-3 (S & P) <i>FWC</i> Supplying, fitting and fixing Anglo-Indian-W.C. in white glazed vitreous china ware of approved make complete in position with necessary bolts, nuts etc.				
	a) With 'P' trap (with vent)	5	Each	3104.00 <i>1421.00</i>	<i>7,105.00</i>
51	Page No.-81. Item No.-10 (S & P) Supplying, fitting and fixing Closet seat of approved make with lid and C.P. hinges, rubber buffer and brass screws complete. (b)-Anglo Indian <i>FWC</i> (ii) Plastic (hallow type) White	5	Each	485.00 <i>380.00</i>	<i>1,900.00</i>
52	Page No.-81. Item No.-10 (S & P) Supplying, fitting and fixing 10 litre P.V.C. low-down cistern conforming to I.S. specification with P.V.C. fittings complete, C.I. brackets including two coats of painting to bracket etc.	5	Each	1015.00	5,075.00
53	Page No.-80. Item No.-6 (S & P) Supplying, fitting and fixing Flat back urinal (half stall urinal) in white vitreous chinaware of approved make in position with brass screws on 75 mm X 75 mm X 75 mm wooden blocks complete. (ii) 470 mm X 280 mm X 340 mm	2	Each	945.00	1,890.00
54	Page No.-80. Item No.-7 (S & P) Supplying, fitting and fixing Squating plate with Integral flushing in white vitreous chinaware of approved make in cement concrete (6:3:1) with jhama chips complete. (Payment of concrete will be paid seperately). (i) 450 mm X 350 mm	3	Each	881.00	2,643.00
55	Page No.-81. Item No.-11 (S & P) Supplying,fitting and fixing 32 mm dia. Flush Pipe of approved make with necessary fixing materials and clamps complete. i) Polythene Flush Pipe	4	Each	155.00	620.00

Reference of Schedule followed with PWD Building Works 2017 With 11th CORRIGENDA

Sl.	Description of Items.	Quantity	Unit	Rate(Rs.)	Amount(Rs.)
56	Page No.-81. Item No.-12 (S & P) Supplying, fitting and fixing urinal flush pipe fittings of approved brand. (a) C.P. urinal flush pipe fittings range of one	1	Each	414.00	414.00 ✓
57	Page No.-41. Item No.-2 (S & P) Supplying, fitting and fixing white vitreous china best quality approved make wash basin with C.I. brackets on 75 mm X 75 mm wooden blocks, C.P. waste fittings of 32 mm dia., one approved quality brass C.P. pillar cock of 15 mm dia., C.P. chain with rubber plug of 30 mm dia., approved quality P.V.C. waste pipe with C.P. nut 32 mm dia., 900 mm long approved quality P.V.C. connection pipe with heavy brass C.P. nut including mending good all damages and painting the brackets with two coats of approved paint. (ii) 550 mm X 400 mm size	2	Each	2208.00	4,416.00 ✓
58	Page No.-41. Item No.-3 (S & P) Supplying fitting and fixing pedestal of approved make for wash basin (White)	2	Each	1497.00	2,994.00 ✓
59	Page No.-43. Item No.-9 (S & P) Supplying,fitting and fixing approved brand P.V.C. CONNECTOR white flexible, with both ends coupling with heavy brass C.P. nut, 15 mm dia., (iii) 600 mm long	5	Each	107.00	535.00 ✓
60	Page No.-43. Item No.-10 (S & P) Supplying,fitting and fixing approved brand 32 mm dia.P.V.C. waste pipe, with PVC coupling at one end fitted with necessary clamps. (iv) 1050 mm long each	2	Each	91.00	182.00 ✓
61	Page No.-3. Item No.-3 (S & P) Supplying,fitting and fixing shower of approved brand and make. (f) Hand Shower(Health Faucet) with 1mtr Flexible Tube with Wall Hook(Equivalent to Code No.573 & Model -ALLIED of Jaquar or similar).	5	Each	1251.00	6,255.00 ✓
62	Page No.-81. Item No.-15 (S & P) Supplying, fitting and fixing bevelled edged mirror 5.5 mm thick silver red as per I.S. 3438 / 1965 together with brass C.P. hinges. (i) 450 mm X 300 mm	2	Each	367.00	734.00 ✓
63	Page No.-82. Item No.-22 (S & P) Supplying, fitting and fixing towel rail with two brackets. (ii) 25 mm dia. and 600 mm long	5	Each	430.00	2,150.00 ✓
64	Page No.-06. Item No.-7 (S & P) Supplying, fitting and fixing bib cock or stop cock. (a) (i) Chromium plated Bib Cock short body (Equivalent to Code No. 511 & Model - Tropical / Sumthing Special of ESSCO or similar brand).	7	Each	539.00	3,773.00 ✓

Reference of Schedule followed with PWD Building Works 2017 With 11th CORRIGENDA

Sl.	Description of Items.	Quantity	Unit	Rate(Rs.)	Amount(Rs.)
65	Page No.-06. Item No.-7 (S & P) Supplying, fitting and fixing bib cock or stop cock. (b) (i) Chromium plated Stop Cock (Equivalent to Code No. 513(A) & 513(B) & Model - Tropical / Sumthing Special of ESSCO or similar	5	Each	493.00	2,465.00
66	Page No.-06. Item No.-7 (S & P) Supplying, fitting and fixing bib cock or stop cock. (d) (i) Chromium plated angular Stop Cock with wall flange (Equivalent to Code No. 5053 & Model - Florentine of Jaquar or similar bran	5	Each	815.00	4,075.00
67	Page No.-45. Item No.-19 (S & P) Supplying, fitting and fixing pillar cock of approved make. a) (i) CP Pillar Cock - 15 mm. (Equivalent to Code No. 507 & Model - Tropical / Sumthing Special of ESSCO or similar brand).	2	Each	555.00	1,110.00
68	Page No.-82. Item No.-18 (S & P) Supplying, fitting and fixing soap holder (c) Polythene	7	Each	50.00	350.00
69	Page No.-12. Item No.-19 (I) (S & P) Supplying, fitting and fixing PVC pipes of approved make of Schedule 80 (medium duty) conforming to ASTM D - 1785 and threaded to match with GI Pipes as per IS : 1239 (Part - I). with all necessary accessories, specials viz. socket, bend, tee, union, cross, elbo, nipple, long screw, reducing socket, reducing tee, short piece etc. fitted with holder bats clamps, including cutting pipes, making threads, fitting, fixing etc. complete in all respect including cost of all necessary fittings as required, jointing materials and two coats of painting with approved paint in any position above ground. (Payment will be made on the centre line measurements of total pipe line including all specials. No separate payment will be made for accessories, specials. Payment for painting will be made separately)				
	(a) For Exposed Work PVC Pipes, 25 mm	24.00	Mtr	177.00	4,248.00
70	Page No.-12. Item No.-19 (I) (S & P) Supplying, fitting and fixing PVC pipes of approved make of Schedule 80 (medium duty) conforming to ASTM D - 1785 and threaded to match with GI Pipes as per IS : 1239 (Part - I). with all necessary accessories, specials viz. socket, bend, tee, union, cross, elbo, nipple, long screw, reducing socket, reducing tee, short piece etc. fitted with holder bats clamps, including cutting pipes, making threads, fitting, fixing etc. complete in all respect including cost of all necessary fittings as required, jointing materials and two coats of painting with approved paint in any position above ground. (Payment will be made on the centre line measurements of total pipe line including all specials. No separate payment will be made for accessories, specials. Payment for painting will be made separately)				
	(a) For Exposed Work PVC Pipes, 15 mm	12.00	Mtr	101.00	1,212.00

Reference of Schedule followed with PWD Building Works 2017 With 11th CORRIGENDA

Sl.	Description of Items.	Quantity	Unit	Rate(Rs.)	Amount(Rs.)
71	Page No.-12. Item No.-19 (I) (S & P) Supplying, fitting and fixing PVC pipes of approved make of Schedule 80 (medium duty) conforming to ASTM D - 1785 and threaded to match with GI Pipes as per IS : 1239 (Part - I). with all necessary accessories, specials viz. socket, bend, tee, union, cross, elbo, nipple, long screw, reducing socket, reducing tee, short piece etc. fitted with holder bats clamps, including cutting pipes, making threads, fitting, fixing etc. complete in all respect including cost of all necessary fittings as required, jointing materials and two coats of painting with approved paint in any position above ground. (Payment will be made on the centre line measurements of total pipe line including all specials. No separate payment will be made for accessories, specials. Payment for painting will be made separately)				
	(b) For Concealed Work PVC Pipes, 15 mm	12.00	Mtr	137.00 ✓	1,644.00 ✓
72	Page No.-5. Item No.-5 (S & P) Supplying and fitting fixing of gunmetal wheel valve of approved brand and make tested to 21 Kg per sq. cm. 25 mm dia (For water lines only)				
	(vii) 25mm dia.	2	Each	778.00 ✓	1,556.00 ✓
73	Page No.-68. Item No.-23 (S & P) Supply of UPVC pipes (B Type) & fittings conforming to IS-13592-1992 (A) (i) Single Socketed 3 Meter Length (b) 110 mm	30.00	Mtr	315.00 ✓	9,450.00 ✓
74	Page No.-68. Item No.-23 (S & P) Supply of UPVC pipes (B Type) & fittings conforming to IS-13592-1992 B) Fittings (i) Coupler (b) 110 mm	8	Each	85.00 ✓	680.00 ✓
75	Page No.-68. Item No.-23 (S & P) Supply of UPVC pipes (B Type) & fittings conforming to IS-13592-1992 B) Fittings (ii) Plain Tee (b) 110 mm	12	Each	85.00 ✓	1,020.00 ✓
76	Page No.-68. Item No.-23 (S & P) Supply of UPVC pipes (B Type) & fittings conforming to IS-13592-1992 B) Fittings (iii) Door Tee (b) 110 mm	10	Each	195.00 ✓	1,950.00 ✓
77	Page No.-68. Item No.-23 (S & P) Supply of UPVC pipes (B Type) & fittings conforming to IS-13592-1992 B) Fittings (ix) Bend 45 Degree (b) 110 mm	10	Each	195.00 ✓	1,950.00 ✓

Reference of Schedule followed with PWD Building Works 2017 With 11th CORRIGENDA

Sl.	Description of Items.	Quantity	Unit	Rate(Rs.)	Amount(Rs.)
78	Page No.-68. Item No.-23 (S & P) Supply of UPVC pipes (B Type) & fittings conforming to IS-13592-1992 B) Fittings (xi) Door Bend (T. S.) (b) 110 mm	7	Each	147.00	1,029.00
79	Page No.-68. Item No.-23 (S & P) Supply of UPVC pipes (B Type) & fittings conforming to IS-13592-1992 B) Fittings (xvi) Pipe Clip (b) 110 mm	30	Each	21.00	630.00
80	Page No.-68. Item No.-23 (S & P) Supply of UPVC pipes (B Type) & fittings conforming to IS-13592-1992 B) Fittings xvii) W.C. Connector (150 mm long) 125 X 110(W/WC Ring) 75 mm	4	Each	142.00	568.00
81	Page No.-68. Item No.-23 (S & P) Supply of UPVC pipes (B Type) & fittings conforming to IS-13592-1992 B) Fittings (xxxi) Plain Floor Trap with Top tile & Strainer 75 mm	7	Each	144.00	1,008.00
82	Page No.-68. Item No.-23 (S & P) Supply of UPVC pipes (B Type) & fittings conforming to IS-13592-1992 B) Fittings L) Rubber Ring (b) 110 mm	15	Each	17.00	255.00
83	Page No.-68. Item No.-23 (S & P) Supply of UPVC pipes (B Type) & fittings conforming to IS-13592-1992 C)Rubber Lubricant 500 ML	1	Each	187.00	187.00
84	Page No.-68. Item No.-23 (S & P) Supply of UPVC pipes (B Type) & fittings conforming to IS-13592-1992 D)Solvent Cement 250 ML	1	Each	103.00	103.00
85	Page No.-37. Item No.-06 (S & P) Supplying P.V.C. water storage tank of approved quality with closed top with lid (Black) - Multilayer (b) 1000 litre capacity	1	Each	5128.00	5,128.00

Reference of Schedule followed with PWD Building Works 2017 With 11th CORRIGENDA

Sl.	Description of Items.	Quantity	Unit	Rate(Rs.)	Amount(Rs.)
86	Page No.-37. Item No.-06 (S & P) Supplying P.V.C. water storage tank of approved quality with closed top with lid (Black) - Multilayer (c) 1500 litre capacity (Semi Underground Water Reservoir)	1	Each	7840.00	7,840.00
87	Page No.-37. Item No.-10 (S & P) Labour for hoisting plastic water storage tank. (i) Upto 1500 litre capacity. (a) Upto 1st story from G.L.	2	Each	96.00	192.00
88	Page No.-38. Item No.-13 (S & P) Labour for punching hole in plastic water storage tank upto 50 mm dia	8	Each	19.00	152.00
89	Rate Collected From Market (GEM) Suppling, Fitting & Fixing 1HP Crompton monoblock Pump	1	Each	4774.99	4,774.99
90	Page No.-87. Item No.-01 (S & P) Constructing Inspection pit of inside measurement 600mm X 600mm X upto 600mm (depth) with 250 mm thick 1st. class brick work in cement mortar (1:4) on all sides, bottom of the pit consisting of 100 mm thick cement concrete (1:3:6) with stone chips over a layer of jhama brick flat soling, 15 mm thick (1:4) cement plaster to inside walls and out-side walls upto G.L. and 20 mm.thick (1:4) plaster to bottom of the pit, providing necessary invert with cement concrete (1:3:6) with stone chips as per direction, neat cement finishing to entire internal surfaces, top of the pit covered with 100 mm thick R.C.C. slab (1:1.5:3) with stone chips and necessary reinforcements upto 1% and shuttering including 6 mm thick cement plaster (1:4) in all external surfaces of the slab and one 560 mm dia. R.C.C. manhole cover of approved make supplied, fitted and fixed in the slab with necessary fittings, necessary earthwork in excavation in all sorts of soil, filling sides of the pit with earth and removing spoils after work complete in all respect with all costs of labour and materials.				
	i) With Pakur variety (Other than SAIL/TATA/RINL).	5	Each	7248.00	36,240.00

Reference of Schedule followed with PWD Building Works 2017 With 11th CORRIGENDA

Sl.	Description of Items.	Quantity	Unit	Rate(Rs.)	Amount(Rs.)
91	<p>Page No.-88. Item No.-03 (S & P) Construction of septic tank of different capacities as per approved drawing with 1st class brick work in cement mortar (1:4) including two 560 mm dia. R.C.C. manhole cover(heavy type)of approved make supplied, fitted and fixed in the 100mm thick R.C.C (1:1.5:3) top slab with necessary fittings, 20mm thick cement plaster (4 : 1) with neat cement finish to the internal surfaces and 15 mm thick cement plaster (4 : 1) to outside wall upto 200 mm below G.L floor finished with 25 mm thick grey artificial stone over 100 mm thick R.C.C(1:1.5:3) bottom slab including supplying, fitting and fixing all necessary specials, fittings, S.W. tees, C.I. foot rest etc. including excavation earth in all sorts of soil, shoring, bailing out and pumping out water as necessary, ramming, dressing the bed and feilling the sides of the tanks with earth, removing spoils, filling up the chamber with clear water, removing foreign materials from the chamber and including constructing attached inspection pit as per approved drawing and connecting all necessary pipes, joints etc. with internal plaster work and artificial stone flooring is to be done with admixture of water proofing compound @ 0.5% by weight of cement with all costs of labour and materials. Note:- (i) Finished level of Septic Tank should be 400 mm. from Ground Level. (ii) Height of 50 mm. Ventilation pipe &Mosquito proof mesh, should be follwed as per IS:2470,Part I.Payment will be made separetly on the basis of actual height (iii) For 50 users A) With Pakur variety. (JSW/JSPL/SHYAM/SRMB/ELECTROSTEEL/SSL)</p>	1	Each	89678.00	89,678.00

~~8,23,188.03~~

Reference of Schedule followed with PWD Building Works 2017 With 11th CORRIGENDA

Sl.	Description of Items.	Quantity	Unit	Rate(Rs.)	Amount(Rs.)
-----	-----------------------	----------	------	-----------	-------------

92 Page No.-88. Item No.-03 (S & P)

Construction of circular soak well 2.5 metre deep in all types of sandy soils with dry brick work upto 1.6 metre from the bottom having 150 mm intermediate cement brick work (1:4) band all round and cement brick work (1:4) upto 0.90 metre from top with 20mm thick cement plastering (1:4) to inside face upto the depth of cement brick work, 15mm thick cement plaster (1:4) on outer face from top of the well upto G.L. and 6 mm thick cement plaster (1:4) on top of the R.C.C. cover slab including filling bottom 1.00 metre of inside of the well with brick metal (50 mm to 63 mm size) including R.C.C. cover slab of 100 mm thick with cement conc (1:1.5:3) with stone chips with necessary reinforcement and shuttering including one 560 mm dia. R.C.C. manhole cover (heavy type) of approved make supplied, fitted and fixed in the cover slab with necessary fittings, making necessary arrangements for pipe connections, excavation of well including shoring, dewatering and removing the excess earth from the premises as per direction complete in all respect with all costs of labour and materials. With 250 mm thick dry brick work and 250 mm thick cement brick work (1:6) and 1.00m inside dia.

(SAIL/TATA/RINL)

1 Each	16621.00	16,621.00	✓
		8,28,585.52	833475.09
Add 18% GST Rs.		1,49,145.39	150025.52
		9,77,730.91	983500.61
Add 1% Labour Welfare Cess Rs.		9,777.31	9835.01
		9,87,508.22	993335.61
Add 3% Contingency Rs.		29,331.93	29505.02
		10,16,840.15	1022840.63
Say Rs.	10,16,840.00	10,16,840.00	1022841.00

A = Say 1022841.00

A+B = 10,22,841.00 + 18,695.00
= Rs. 10,41,536.00

Sukalpa Tarafdar
SAE 16.04/25
New Barrackpore Municipality

Rajib Chatterjee
AE 16/09/25
New Barrackpore Municipality

Prabir Saah
Chairman
New Barrackpore Municipality

SUKALPA TARAFDAR
Sub- Assistant Engineer
New Barrackpur Municipality

RAJIB CHATTERJEE
Assistant Engineer
New Barrackpore Municipality

PRABIR SAHA
Chairman
New Barrackpore Municipality

Yun
22/05/25
JUNIOR ENGINEER (CIVIL)
NORTH 24 PGS DIVISION
ME DIRECTORATE
GOVT. OF WEST BENGAL

Rahn
23/05/25
Assistant Engineer (Civil)
North 24 Pgs Divn., M.E.Dte

Vetted

Shubh
23/05/25
Executive Engineer
North 24 Pgs Divn. M.E.Dte

Reference of Schedule followed with PWD Building Works 2017 With 11th CORRIGENDA

Sl.	Description of Items.	No.	Length	Width	Height	Quantity	Unit
5	Page No.-26. Item No.-10. Ordinary Cement concrete (mix 1:1.5:3) with graded stone chips (20 mm nominal size) excluding shuttering and reinforcement if any, in ground floor as per relevant IS codes. (i) Pakur Variety						
	Column Base	6	1.20	1.20	0.20	1.73	
	Column Base	6	0.80		0.20	0.96	
	Column Pedestal	6	0.40	0.40	0.30	0.29	
	Column	6	0.25	0.25	0.25	0.09	
	Tie Beam		23.05	0.25	0.25	1.44	
	Column	6	0.25	0.25	0.60	0.23	
	Column	6	0.25	0.25	2.875	1.08	
	Roof Beam		23.05	0.25	0.125	0.72	
	Roof Slab		7.40	3.75	0.125	3.47	
	Lintel	2	1.15	0.25	0.15	0.09	
	Lintel	5	1.00	0.125	0.15	0.09	
	Sunshed		2.55	0.50	0.075	0.10	
						10.28	Cu.m
6	Page No.- 42, Item No.- 36. Hire and labour charges for shuttering with centering and necessary staging upto 4 m using approved stout props and thick hard wood planks of approved thickness with required bracing for concrete slabs, beams and columns, lintels curved or straight including fitting, fixing and striking out after completion of works (upto roof of ground floor) (a) 25 mm to 30 mm thick wooden shuttering as per decision & direction of Engineer-In-Charge.						
	Column Pedestal	6	1.60		0.30	2.88	
	Column	6	1.00		0.25	1.50	
	Tie Beam	2	23.05		0.25	11.53	
	Column	6	1.00		0.60	3.60	
	Column	6	1.00		2.875	17.25	
	Roof Beam	2	23.05		0.25	11.53	
	Roof Slab		7.40		3.75	27.75	
	Lintel	2	1.00		0.25	0.50	
	Lintel	4	1.15		0.15	0.69	
	Lintel	5	0.75		0.125	0.47	
	Lintel	10	1.00		0.15	1.50	
	Sunshed		2.55		0.50	1.28	
	Sunshed	2	0.50		0.075	0.08	
						80.54	Sqm
7	Page No.- 43, Item No.- 40. Reinforcement for reinforced concrete work in all sorts of structures including distribution bars, stirrups, binders etc initial straightening and removal of loose rust (if necessary), cutting to requisite length, hooking and bending to correct shape, placing in proper position and binding with 16 guage black annealed wire at every intersection, complete as per drawing and direction. (a) For works in foundation, basement and upto roof of ground floor / upto 4 m. (i) Tor steel / Mild steel I. SAIL/ TATA/RINL						
		0.012	10.28		7.85	0.97	M.T.

Reference of Schedule followed with PWD Building Works 2017 With 11th CORRIGENDA

Sl.	Description of Items.	No.	Length	Width	Height	Quantity	Unit
8	Page No.- 24 Item No.- 4 25mm. thick damp proof course with cement concrete with stone chips (1:1.5:3) [with graded stone aggregate 10 mm nominal size] and admixture of water proofing compound as per manufacturer's specification followed by two coat of polymer based paint, (1st coat after 4 to 5 days of concrete laying and 2 nd coat just before brick masonry work) as directed (cost of water proofing compound & polymer based paint to be paid separately).(Chequering not required over concrete or painted surface).		23.05		0.25	5.76	Sq. m
9	Page No.- 2, Item No.-4. (A) Filling in foundation or plinth by silver sand in layers not exceeding 150 mm as directed and consolidating the same by thorough saturation with water, ramming complete including the cost of supply of sand. (payment to be made on measurement of finished quantity	2	3.325	3.25	0.425	9.19	%Cu.m
10	Page No.- 15, Item No.- 8. Brick work with 1st class bricks in cement mortar (6:1) (a) In foundation and plinth	2	23.05	0.25	0.60	3.46	
			2.50	0.25	0.60	0.75	
			1.00	0.25	0.60	0.15	
			2.25	0.25	0.15	0.08	
			2.25	0.25	0.30	0.17	
			2.25	0.25	0.45	0.25	
						4.86	Cum
11	Page No.- 15, Item No.- 8. Brick work with 1st class bricks in cement mortar (6:1) b) In superstructure, ground floor		23.05	0.25	2.75	15.85	
			1.00	0.25	2.10	0.53	
	Less : Door	2	1.00	0.25	2.10	1.05	
	Less : Lintel	2	1.15	0.25	0.15	0.09	
	Less : Grill	2	2.00	0.25	0.75	0.75	
	Less : Grill	6	0.60	0.25	0.60	0.54	
						13.95	Cum
12	Page No.- 16, Item No.- 16. 125 mm. thick brick work with 1st class bricks in cement mortar (1:4) in ground floor.		11.75		2.875	33.78	
			21.80		0.30	6.54	
	Less : Door	5	0.75		2.10	7.88	
	Less : Lintel	5	1.00		0.15	0.75	
						31.70	Sqm
13	Page No.- 192, Item No.- 1. Labour for Chipping of concrete surface before taking up Plastering work.						
	Column	6	1.00		2.875	17.25	
	Roof Beam	2	23.05		0.25	11.53	
	Roof Slab		7.40		3.75	27.75	
	Lintel	2	1.00		0.25	0.50	
	Lintel	4	1.15		0.15	0.69	
	Lintel	5	0.75		0.125	0.47	
	Lintel	10	1.00		0.15	1.50	
	Sunshed	2	2.55		0.50	2.55	
	Sunshed	2	0.50		0.075	0.08	
						62.31	Sqm

Reference of Schedule followed with PWD Building Works 2017 With 11th CORRIGENDA

Sl.	Description of Items.	No.	Length	Width	Height	Quantity	Unit
14	Page No.- 189, Item No.- 2. Plaster (to wall, floor, ceiling etc.) with sand and cement mortar including rounding off or chamfering corners as directed and raking out joints including throating, nosing and drip course, scaffolding/staging where necessary (Ground floor).[Excluding cost of chipping over concrete surface] (ii) With 1:4 cement mortar (c) 10 mm thick plaster						
	Ceiling	2	3.325	3.25		21.61	Sqm
15	Page No.- 189, Item No.- 2. Plaster (to wall, floor, ceiling etc.) with sand and cement mortar including rounding off or chamfering corners as directed and raking out joints including throating, nosing and drip course, scaffolding/staging where necessary (Ground floor).[Excluding cost of chipping over concrete surface] (i) With 6:1 cement mortar (c) 15 mm. thick plaster						
	Outside		22.30		4.325	96.45	
			1.00		4.45	4.45	
			0.25		2.10	0.53	
			5.25		0.50	2.63	
	Less: Door	0.67	1.00		2.10	1.40	
						102.65	Sqm
16	Page No.- 192, Item No.- 15. Plaster (to wall, floor, ceiling etc.) with sand and cement mortar including rounding off or chamfering corners as directed and raking out joints including throating, nosing and drip course, scaffolding/staging where necessary (Ground floor).[Excluding cost of chipping over concrete surface] (i) With 6:1 cement mortar (b) 20 mm thick plaster						
	Inside		5	5.45	2.875	78.34	
			2	8.65	2.875	49.74	
	Less: Door	0.67	1.00		2.10	1.40	
	Less: Door	3.33	0.75		2.10	5.25	
						121.43	Sqm
17	Page No.- 192, Item No.- 15. Neat cement punning about 1.5 mm. thick in wall, dado, window, sills, floor, etc.		20.05		0.60	12.03	Sqm
18	Page No.- 48, Item No.- 6. Artificial stone in floor ,dado, staircaseetc with cement mortar (1:2:4)with stone chips lsied in panels as directed with topping made with ordinary or white cement (as necessary) and marbel dust in proportion (1:2) in cluding smooth finishing and rounding off corners including raking out joints or roughening of concrete surface and application of cement slurry before flooring works using cement @ 1.75 kg/ sq.m all complete including all materials and labour. In ground floor 3 mm thick topping using gray cement (ii)25 mm		7.15	3.50		25.03	Sqm

Reference of Schedule followed with PWD Building Works 2017 With 11th CORRIGENDA

Sl.	Description of Items.	No.	Length	Width	Height	Quantity	Unit
19	Page No.- 74, Item No.- 46. Supplying and laying chequered tiles of any shade and of approved quality with (1:1.5:3) cement concrete laied in pannels or patterns as directed in pavement ,footpath etc including necessary underlay 25 mm thick (avg)cement mortar (1:3) complete in all respect with all labour and materials. (Using cement slurry @4.4kg/sq.m at back side and @2.4 kg/sq.m for joint filling).	2	2.80	1.00		5.60	
		3	2.25	0.25		1.69	
		4	2.25	0.15		1.35	
		2	0.75	0.30		0.45	
						<u>9.09</u>	Sqm
20	Page No.- 66. Item No.- 36 Supplying and laying true to line and level vitrified tiles of approved brand (size not less than 600 mm X 600 mm X 10 mm thick) in floor, skirting etc. set in 20 mm sand cement mortar (1:4) and 2 mm thick cement slurry back side of tiles using cement @ 2.91Kg./sqM or using polymerised adhesive (6 mm thick layer applied directly over finished artificial stone floor/Mosaic etc without any backing course) laid after application slurry using 1.75 Kg of cement per sqM below mortar only, joints grouted with admixture of white cement and colouring pigment to match with colour of tiles / epoxy grout materials of approved make as directed and removal of wax coating of top surface of tiles with warm water and polishing the tiles using soft and dry cloth upto mirror finish complete including the cost of materials, labour and all other incidental charges complete true to the manufacturer's specification and direction of Engineer-in-Charge. (White cement, synthetic adhesive and grout material to be supplied by the contr[r]e) l						
	(l) With application slurry @1.75 kg/ Sq.m, 20 mm sand cement mortar (1:4) & 2 mm thick cement slurry at back side of tiles, 0.2 kg/ Sq.m white cement for joint filling with pigment.						
	(A) Deep Colour & White	2	3.325	3.25		21.61	Sqm
21	Page No.- 64, Item No.- 35. Supplying, fitting & fixing 1st quality Ceramic tiles in walls and floors to match with the existing work & 4 nos. of key stones (10mm) fixed with araldite at the back of each tile & finishing the joints with white cement mixed with colouring oxide if required to match the colour of tiles including roughening of concrete surface, if necessary or by synthetic adhesive & grout materials etc.						
	(B) Wall With Sand Cement Mortar (1:3) 15 mm thick & 2 mm thick cement slurry at back side of tiles using cement @ 2.91 Kg/Sq.m & joint filling using white cement slurry @ 0.20kg/Sq.m.						
	(b) Area of each tile above 0.09 Sq.m						
	(i) Coloured decorative	5	5.45		2.10	57.23	
		2	8.65		2.10	36.33	
						<u>93.56</u>	Mtr

Reference of Schedule followed with PWD Building Works 2017 With 11th CORRIGENDA

Sl.	Description of Items.	No.	Length	Width	Height	Quantity	Unit
22	Page No.- 115, Item No.- 3. Supplying, fitting and fixing fibre reinforced polymer (FRP) Composite door frame as per approved section with glass fibre reinforced plastic moulded skins and a special sandwich core, so as to impart monolithic composite structure as per approved technology of Department of Science and Technology (DST) to satisfy IS: 4020 door testing performance criteria.. (i) 66mm x 90mm	5	4.95			24.75	Mtr
23	Page No.- 125, Item No.- 14. Supplying, fitting & fixing fibre reinforced polymer (FRP) Composite door shutters as per approved design with glass fibre reinforced plastic moulded skins and a special sandwich core, so as to impart monolithic composite structure as per approved technology of Department of Science and Technology (DST) to satisfy IS:4020 door testing performance criteria. In ground floor. ii) 25 mm thick	5	0.75		2.10	7.875	Sq.m
24	Page No.-104, Item No.-13. (a) M.S.or W.I. Ornamental grill of approved design joints continuously welded with M.S, W.I. Flats and bars of windows, railing etc. fitted and fixed with necessary screws and lugs in ground floor. (ii) Grill weighing above 10 Kg./sq.mtr and 16 Kg./sq.mtr	2 6	2.00 0.60		0.75 0.60	3.00 2.16	
						5.16	Sq. m
			@ 14kg/Sqm			72.24	Kg
					=	0.72	Qntl
25	Page No.-107, Item No.-20. Supplying, fitting and fixing windows and ventilators with or without integrated grills conforming to IS 1038-1975 and manufactured from rolled steel sections conforming to IS 7452-1974 with non-friction projecting type, box type hinges, glazing clips, lugs locking bracket, handle plate etc, including hoisting in position, straightening if required, fixing lugs in cement concrete (1:2:4) with stone chips 20 mm down cutting holes and mending good damages to match with existing surface complete in all respect excluding glazing (b) Openable steel windows as per IS sizes with side hung shutters and horizontal glazing bars. [The extra rate admissible for the openable portion only]	2 6	2.00 0.60		0.75 0.60	3.00 2.16	
						5.16	Sq. m
26	Page No.-205, Item No.-1. Supplying best Indian sheet glass panes set in putty and fitted and fixed with nails and putty complete. (In all floors for internal wall & upto 6 m height for external wall) ii) 4 mm thick	2 6	2.00 0.60		0.75 0.60	3.00 2.16	
						5.16	Sq. m

Reference of Schedule followed with PWD Building Works 2017 With 11th CORRIGENDA

Sl.	Description of Items.	No.	Length	Width	Height	Quantity	Unit
27	Page No.-106. Item No.-18. Collapsible gate with 40 mm x 10 mm x 6 mm Tee as top and bottom guide rail , 20 mm x 10 mm x 2 mm vertical channels 100 mm apart in full stretched position 20m x 5 mm MS flats as collapsible bracings properly riveted and washered including 38 mm steel roller including locking arrangements , fitted and fixed in position with lugs set in cement concrete including cutting necessary hives chasing etc in walls , floors etc and making good all damages	2	1.00		2.10	4.20	Sq. m
28	Page No.-198. Item No.-5. Rendering the Surface of walls and ceiling with White Cement base WATER PROOF wall putty of approved make & brand.(1.5 mm thick) In Ground Floor	2	3.325	3.25		21.61	
			22.30		4.325	96.45	
			1.00		4.45	4.45	
			0.25		2.10	0.53	
			5.25		0.50	2.63	
		5	5.45		2.875	78.34	
		2	8.65		2.875	49.74	
	Less	5	5.45		2.10	57.23	
	Less	2	8.65		2.10	36.33	
	Less		20.05		0.60	12.03	
						148.16	Sq. m
29	Page No.- 195, Item No.- 7(a). Applying Interior grade Acrylic Primer of approved quality and brand on plastered or concrete surface old or new surface to receive Distemper/ Acrylic emulsion paint including scraping and preparing the surface thoroughly, complete as per manufacturer's specification and as per direction of the EIC. (In Ground Floor) (b) Two Coats i) Water based interior grade Acrylic Primer	2	3.325	3.25		21.61	
		5	5.45		2.875	78.34	
		2	8.65		2.875	49.74	
	Less	5	5.45		2.10	57.23	
	Less	2	8.65		2.10	36.33	
						56.14	%Sq. m
30	Page No.- 201, Item No.- 4. Applying Acrylic Emulsion Paint of approved make and brand on walls and ceiling including sand papering in intermediate coats including putty (to be done under specific instruction of Superintending Engineer) : (Two coats) i) Standard Quality	2	3.325	3.25		21.61	
		5	5.45		2.875	78.34	
		2	8.65		2.875	49.74	
	Less	5	5.45		2.10	57.23	
	Less	2	8.65		2.10	36.33	
						56.14	Sq. m

Reference of Schedule followed with PWD Building Works 2017 With 11th CORRIGENDA

Sl.	Description of Items.	No.	Length	Width	Height	Quantity	Unit
31	<u>Page No.- 200, Item No.- 1(a).</u> (a) Priming one coat on steel or other metal surface with synthetic oil bound primer of approved quality including smoothening surfaces by sand papering etc.	4 12	2.00 0.60		0.75 0.60	6.00 4.32	Sqm
						10.32	
32	<u>Page No.- 200, Item No.- 1(b).</u> (b) Priming one coat on timber or plastered surface with synthetic oil bound primer of approved quality including smoothening surfaces by sand papering etc.	5	0.75		2.10	7.88 x 2.6(m.f.) 20.48	Sq.m
33	<u>Page No.- 200, Item No.- 2(A)(a).</u> (A) Painting with best quality synthetic enamel paint of approved make and brand including smoothening surface by sand papering etc. including using of approved putty etc. on the surface, if necessary : (a) On timber or plastered surface : With super gloss (hi-gloss) - (iv) Two coats (with any shade except white)	5	0.75		2.10	7.88 x 2.6(m.f.) = 20.48	Sq.m
34	<u>Page No.- 200, Item No.- 2(A)(b).</u> (A) Painting with best quality synthetic enamel paint of approved make and brand including smoothening surface by sand papering etc. including using of approved putty etc. on the surface, if necessary : (b) On steel or other metal surface : With super gloss (hi-gloss) - (iv) Two coats (with any shade except white)	4 12	2.00 0.60		0.75 0.60	6.00 4.32	Sq.m
						10.32	
35	<u>Page No.-196 Item No.- 4</u> Applying exterior grade Acrylic Primer of approved quality and brand on plastered or concrete surface old and new surface to receive decorative texture (matt finish) or smooth finish acrylic exterior emulsion paint including scraping and preparing the surface throughly ,complete as per manufacturer's specification as per direction of the EIC In Ground (b) Two Coats		22.30 1.00 0.25 5.25		4.325 4.45 2.10 0.50	96.45 4.45 0.53 2.63	%Sq.m
						104.05	

Reference of Schedule followed with PWD Building Works 2017 With 11th CORRIGENDA

Sl.	Description of Items.	No.	Length	Width	Height	Quantity	Unit
36	<u>Page No.-197. Item No.-17</u> Protective and Decorative Acrylic exterior Emulsion paint of approved quality ,as per direction of Engineer- in -Charge to be applied over acrylic primer as required. The rate includes cost of material , labour ,scaffolding and all incidental charges but excluding the cost of primer In Ground floor (Two Coat) (a) Normal Acrylic Emulsion						
			22.30		4.325	96.45	
			1.00		4.45	4.45	
			0.25		2.10	0.53	
			5.25		0.50	2.63	
						104.05	Sq.m
37	<u>Page No.-74. Item No.-24 (B)</u> Labour for fitting and fixing U.P.V.C. pipes for above ground work including cost of jointing materials etc. fitting and fixing all necessary specials, cutting pipes, cutting holes in total pipeline including specials (B) Under ground, (ii) 110 mm dia.	4	6.00			24.00	Mtr
38	<u>Page No.-212. Item No.-21</u> Supplying, fitting & fixing UPVC pipes A- Type and fittings conforming to IS:13592-1992 with all necessary clamps nails, including making holes in walls, floor etc. cutting trenches in any soil through masonry concrete structures etc if necessary and mending good damages including joining with jointing materails (Spun Yarn, Valamoid/Bitumen/M-Seal etc) complete. A) UPVC Pipes: (i) 75 mm. Dia.	5	6.00			30.00	Mtr
39	<u>Page No.-212. Item No.-21</u> Supplying, fitting & fixing UPVC pipes A- Type and fittings conforming to IS:13592-1992 with all necessary clamps nails, including making holes in walls, floor etc. cutting trenches in any soil through masonry concrete structures etc if necessary and mending good damages including joining with jointing materails (Spun Yarn, Valamoid/Bitumen/M-Seal etc) complete. B) UPVC Fittings: c) Bend 87.5 Degree (i) 75 mm. Dia.	2					2 Each
40	<u>Page No.-212. Item No.-21</u> Supplying, fitting & fixing UPVC pipes A- Type and fittings conforming to IS:13592-1992 with all necessary clamps nails, including making holes in walls, floor etc. cutting trenches in any soil through masonry concrete structures etc if necessary and mending good damages including joining with jointing materails (Spun Yarn, Valamoid/Bitumen/M-Seal etc) complete. B) UPVC Fittings: d) Shoe (i) 75 mm. Dia.	2					2 Each

Reference of Schedule followed with PWD Building Works 2017 With 11th CORRIGENDA

Sl.	Description of Items.	No.	Length	Width	Height	Quantity	Unit
41	Page No.-140. Item No.-5 Iron butt hinges of approved quality fitted and fixed with steel screws, with ISI mark. viii) 100mm. X 75mm. X 1.25mm.	5x4				20	Each
42	Page No.-141. Item No.-10 i) Iron hasp bolt of approved quality fitted and fixed complete (oxidised) with 16mm dia rod with centre bolt and round fitting. (b) 250mm long.	5				5	Each
43	Page No.-144. Item No.-26 Anodised aluminium barrel / tower / socket bolt (full covered) of approved manufactured from extruded section conforming to I.S. 204/74 fitted and fixed with cadmium plated screws (vii) 225mm long x 10mm dia. bolt.	5				5	Each
44	Page No.-146. Item No.-31 Anodised aluminium decorative handle (hexagonal / fluted) of approved quality fitted and fixed complete. (i) 150mm plate x 10mm dia rod x 12mm hexagonal/fluted.	2x5				10	Each
45	Page No.-140. Item No.-4 Supplying, fitting and fixing M.S. clamps for door and window frame made of flat bent bar, end bifurcated with necessary screws etc. by cement concrete(1:2:4) as per direction. (Cost of concrete will be paid separately c) 40mm X 6mm, 125mm Length	6x5				30	Each
46	Page No.-268. Item No.-17 Painting block letters or digits in Black Japan or any approved paint as per direction. e) Size above 7.5 cm. and upto 10 cm.	450				450	Each
47	Page No.-261. Item No.-9 Supplying and planting of different plants / trees (supplying well grown plants bushy and healthy, minimum height as specified i.e. exposed height including all leads and lifts, carriage, handling, manuring applying pesticide and fertilizer etc. i) Furcaria Veriegated 10 to 12 leaves in height 20-30 cm in earthen pot of size 25 cm	10				10	Each
48	Page No.-261. Item No.-9 Supplying and planting of different plants / trees (supplying well grown plants bushy and healthy, minimum height as specified i.e. exposed height including all leads and lifts, carriage, handling, manuring applying pesticide and fertilizer etc. x) Ficus blakii (F. Vivicon) well branched (Bushy) of height 120cm - 135 cm in earthen pot of size 30cm.	3				3	Each
49	Page No.-261. Item No.-9 Supplying and planting of different plants / trees (supplying well grown plants bushy and healthy, minimum height as specified i.e. exposed height including all leads and lifts, carriage, handling, manuring applying pesticide and fertilizer etc. xxvi) Areca Palm 4 - 5 suckers of height 90 cm to 105 cm in earthen pots of size 25 cm.	3				3	Each
50	Page No.-79. Item No.-3 (S & P) Supplying, fitting and fixing Anglo-Indian W.C. in white glazed vitreous china ware of approved make complete in position with necessary bolts, nuts etc. a) With 'P' trap (with vent)	5				5	Each

Reference of Schedule followed with PWD Building Works 2017 With 11th CORRIGENDA

Sl.	Description of Items.	No.	Length	Width	Height	Quantity	Unit
51	Page No.-81. Item No.-10 (S & P) Supplying, fitting and fixing Closet seat of approved make with lid and C.P. hinges, rubber buffer and brass screws complete.						
	(b) Anglo Indian (ii) Plastic (hallow type) White	5				5	Each
52	Page No.-81. Item No.-10 (S & P) Supplying, fitting and fixing 10 litre P.V.C. low-down cistern conforming to I.S. specification with P.V.C. fittings complete, C.I. brackets including two coats of painting to bracket etc.	5				5	Each
53	Page No.-80. Item No.-6 (S & P) Supplying, fitting and fixing Flat back urinal (half stall urinal) in white vitreous chinaware of approved make in position with brass screws on 75 mm X 75 mm X 75 mm wooden blocks complete.						
	(ii) 470 mm X 280 mm X 340 mm	2				2	Each
54	Page No.-80. Item No.-7 (S & P) Supplying, fitting and fixing Squating plate with integral flushing in white vitreous chinaware of approved make in cement concrete (6:3:1) with jhama chips complete. (Payment of concrete will be paid seperately).						
	(i) 450 mm X 350 mm	3				3	Each
55	Page No.-81. Item No.-11 (S & P) Supplying, fitting and fixing 32 mm dia. Flush Pipe of approved make with necessary fixing materials and clamps complete.						
	i) Polythene Flush Pipe	4				4	Each
56	Page No.-81. Item No.-12 (S & P) Supplying, fitting and fixing urinal flush pipe fittings of approved brand.						
	(a) C.P. urinal flush pipe fittings range of one	1				1	Each
57	Page No.-41. Item No.-2 (S & P) Supplying, fitting and fixing white vitreous china best quality approved make wash basin with C.I. brackets on 75 mm X 75 mm wooden blocks, C.P. waste fittings of 32 mm dia., one approved quality brass C.P. pillar cock of 15 mm dia., C.P. chain with rubber plug of 30 mm dia., approved quality P.V.C. waste pipe with C.P. nut 32 mm dia., 900 mm long approved quality P.V.C. connection pipe with heavy brass C.P. nut including mending good all damages and painting the brackets with two coats of approved paint.						
	(ii) 550 mm X 400 mm size	2				2	Each
58	Page No.-41. Item No.-3 (S & P) Supplying fitting and fixing pedestal of approved make for wash basin (White)	2				2	Each
59	Page No.-43. Item No.-9 (S & P) Supplying, fitting and fixing approved brand P.V.C. CONNECTOR white flexible, with both ends coupling with heavy brass C.P. nut, 15 mm dia.,						
	(iii) 600 mm long	5				5	Each
60	Page No.-43. Item No.-10 (S & P) Supplying, fitting and fixing approved brand 32 mm dia. P.V.C. waste pipe, with PVC coupling at one end fitted with necessary clamps.						
	(iv) 1050 mm long each	2				2	Each

Reference of Schedule followed with PWD Building Works 2017 With 11th CORRIGENDA

Sl.	Description of Items.	No.	Length	Width	Height	Quantity	Unit
61	Page No.-3. Item No.-3 (S & P) Supplying,fitting and fixing shower of approved brand and make. (f) Hand Shower(Health Faucet) with 1mtr Flexible Tube with Wall Hook(Equivalent to Code No.573 & Model -ALLIED of Jaquar or similar).	5				5	Each
62	Page No.-81. Item No.-15 (S & P) Supplying, fitting and fixing bevelled edged mirror 5.5 mm thick silver red as per I.S. 3438 / 1965 together with brass C.P. hinges. (i) 450 mm X 300 mm	2				2	Each
63	Page No.-82. Item No.-22 (S & P) Supplying, fitting and fixing towel rail with two brackets. (ii) 25 mm dia. and 600 mm long	5				5	Each
64	Page No.-06. Item No.-7 (S & P) Supplying, fitting and fixing bib cock or stop cock. (a) (i) Chromium plated Bib Cock short body (Equivalent to Code No. 511 & Model - Tropical / Sumthing Special of ESSCO or similar brand).	7				7	Each
65	Page No.-06. Item No.-7 (S & P) Supplying, fitting and fixing bib cock or stop cock. (b) (i) Chromium plated Stop Cock (Equivalent to Code No. 513(A) & 513(B) & Model - Tropical / Sumthing Special of ESSCO or similar	5				5	Each
66	Page No.-06. Item No.-7 (S & P) Supplying, fitting and fixing bib cock or stop cock. (d) (i) Chromium plated angular Stop Cock with wall flange (Equivalent to Code No. 5053 & Model - Florentine of Jaquar or similar bran	5				5	Each
67	Page No.-45. Item No.-19 (S & P) Supplying, fitting and fixing pillar cock of approved make. a) (i) CP Pillar Cock - 15 mm. (Equivalent to Code No. 507 & Model - Tropical / Sumthing Special of ESSCO or similar brand).	2				2	Each
68	Page No.-82. Item No.-18 (S & P) Supplying, fitting and fixing soap holder (c) Polythene	7				7	Each
69	Page No.-12. Item No.-19 (I) (S & P) Supplying, fitting and fixing PVC pipes of approved make of Schedule 80 (medium duty) conforming to ASTMD - 1785 and threaded to match with GI Pipes as per IS : 1239 (Part - I). with all necessary accessories, specials viz. socket, bend, tee, union, cross, elbo, nipple, longscrow, reducing socket, reducing tee, short piece etc. fitted with holder bats clamps, including cutting pipes, making threads,fitting, fixing etc. complete in all respect including cost of all necessary fittings as required,jointing materials and two coats of painting with approved paint in any position above ground. (Payment will be made on the centre line measurements of total pipe line including all specials. No separate payment will be made for accesories, specials. Payment for painting will be made seperately)	4	6.00			24.00	Mtr
	(a) For Exposed Work PVC Pipes, 25 mm						

Reference of Schedule followed with PWD Building Works 2017 With 11th CORRIGENDA

Sl.	Description of Items.	No.	Length	Width	Height	Quantity	Unit
70	Page No.-12. Item No.-19 (I) (S & P) Supplying, fitting and fixing PVC pipes of approved make of Schedule 80 (medium duty) conforming to ASTM D - 1785 and threaded to match with GI Pipes as per IS : 1239 (Part - I). with all necessary accessories, specials viz. socket, bend, tee, union, cross, elbo, nipple, long screw, reducing socket, reducing tee, short piece etc. fitted with holder bats clamps, including cutting pipes, making threads, fitting, fixing etc. complete in all respect including cost of all necessary fittings as required, jointing materials and two coats of painting with approved paint in any position above ground. (Payment will be made on the centre line measurements of total pipe line including all specials. No separate payment will be made for accessories, specials. Payment for painting will be made separately)						
	(a) For Exposed Work PVC Pipes, 15 mm	2	6.00			12.00	Mtr
71	Page No.-12. Item No.-19 (I) (S & P) Supplying, fitting and fixing PVC pipes of approved make of Schedule 80 (medium duty) conforming to ASTM D - 1785 and threaded to match with GI Pipes as per IS : 1239 (Part - I). with all necessary accessories, specials viz. socket, bend, tee, union, cross, elbo, nipple, long screw, reducing socket, reducing tee, short piece etc. fitted with holder bats clamps, including cutting pipes, making threads, fitting, fixing etc. complete in all respect including cost of all necessary fittings as required, jointing materials and two coats of painting with approved paint in any position above ground. (Payment will be made on the centre line measurements of total pipe line including all specials. No separate payment will be made for accessories, specials. Payment for painting will be made separately)						
	(b) For Concealed Work PVC Pipes, 15 mm	2	6.00			12.00	Mtr
72	Page No.-5. Item No.-5 (S & P) Supplying and fitting fixing of gunmetal wheel valve of approved brand and make tested to 21 Kg per sq. cm. 25 mm dia (For water lines only) (vii) 25mm dia.	2				2	Each
73	Page No.-68. Item No.-23 (S & P) Supply of UPVC pipes (B Type) & fittings conforming to IS-13592-1992 (A) (i) Single Socketed 3 Meter Length (b) 110 mm	10	3.00			30.00	Mtr
74	Page No.-68. Item No.-23 (S & P) Supply of UPVC pipes (B Type) & fittings conforming to IS-13592-1992 B) Fittings (i) Coupler (b) 110 mm	8				8	Each
75	Page No.-68. Item No.-23 (S & P) Supply of UPVC pipes (B Type) & fittings conforming to IS-13592-1992 B) Fittings (ii) Plain Tee (b) 110 mm	12				12	Each

Reference of Schedule followed with PWD Building Works 2017 With 11th CORRIGENDA

Sl.	Description of Items.	No.	Length	Width	Height	Quantity	Unit
76	<u>Page No.-68. Item No.-23 (S & P)</u> Supply of UPVC pipes (B Type) & fittings conforming to IS-13592-1992 B) Fittings (iii) Door Tee (b) 110 mm	10				10	Each
77	<u>Page No.-68. Item No.-23 (S & P)</u> Supply of UPVC pipes (B Type) & fittings conforming to IS-13592-1992 B) Fittings (ix) Bend 45 Degree (b) 110 mm	10				10	Each
78	<u>Page No.-68. Item No.-23 (S & P)</u> Supply of UPVC pipes (B Type) & fittings conforming to IS-13592-1992 B) Fittings (xi) Door Bend (T. S.) (b) 110 mm	7				7	Each
79	<u>Page No.-68. Item No.-23 (S & P)</u> Supply of UPVC pipes (B Type) & fittings conforming to IS-13592-1992 B) Fittings (xvi) Pipe Clip (b) 110 mm	30				30	Each
80	<u>Page No.-68. Item No.-23 (S & P)</u> Supply of UPVC pipes (B Type) & fittings conforming to IS-13592-1992 B) Fittings (xvii) W.C. Connector (150 mm long) 125 X 110(W/WC Ring) 75 mm	4				4	Each
81	<u>Page No.-68. Item No.-23 (S & P)</u> Supply of UPVC pipes (B Type) & fittings conforming to IS-13592-1992 B) Fittings (xxxi) Plain Floor Trap with Top tile & Strainer 75 mm	7				7	Each
82	<u>Page No.-68. Item No.-23 (S & P)</u> Supply of UPVC pipes (B Type) & fittings conforming to IS-13592-1992 B) Fittings L) Rubber Ring (b) 110 mm	15				15	Each
83	<u>Page No.-68. Item No.-23 (S & P)</u> Supply of UPVC pipes (B Type) & fittings conforming to IS-13592-1992 C)Rubber Lubricant 500 ML	1				1	Each
84	<u>Page No.-68. Item No.-23 (S & P)</u> Supply of UPVC pipes (B Type) & fittings conforming to IS-13592-1992 D)Solvent Cement 250 ML	1				1	Each

Reference of Schedule followed with PWD Building Works 2017 With 11th CORRIGENDA

Sl.	Description of Items.	No.	Length	Width	Height	Quantity	Unit
85	Page No.-37. Item No.-06 (S & P) Supplying P.V.C. water storage tank of approved quality with closed top with lid (Black) - Multilayer (b) 1000 litre capacity	1				1	Each
86	Page No.-37. Item No.-06 (S & P) Supplying P.V.C. water storage tank of approved quality with closed top with lid (Black) - Multilayer (c) 1500 litre capacity (Semi Underground Water Reservoir)	1				1	Each
87	Page No.-37. Item No.-10 (S & P) Labour for hoisting plastic water storage tank. (i) Upto 1500 litre capacity. (a) Upto 1st story from G.L.	2				2	Each
88	Page No.-38. Item No.-13 (S & P) Labour for punching hole in plastic water storage tank upto 50 mm dia	8				8	Each
89	Rate Collected From Market (GEM) Suppling, Fitting & Fixing 1HP Crompton monoblock Pump	1				1	Each
90	Page No.-87. Item No.-01 (S & P) Constructing Inspection pit of inside measurement 600mm X 600mm X upto 600mm (depth) with 250 mm thick 1st. class brick work in cement mortar (1:4) on all sides, bottom of the pit consisting of 100 mm thick cement concrete (1:3:6) with stone chips over a layer of jhama brick flat soling, 15 mm thick (1:4) cement plaster to inside walls and out-side walls upto G.L. and 20 mm.thick (1:4) plaster to bottom of the pit, providing necessary invert with cement concrete (1:3:6) with stone chips as per direction, neat cement finishing to entire internal surfaces, top of the pit covered with 100 mm thick R.C.C. slab (1:1.5:3) with stone chips and necessary reinforcements upto 1% and shuttering including 6 mm thick cement plaster (1:4) in all external surfaces of the slab and one 560 mm dia. R.C.C. manhole cover of approved make supplied, fitted and fixed in the slab with necessary fittings, necessary earthwork in excavation in all sorts of soil, filling sides of the pit with earth and removing spoils after work complete in all respect with all costs of labour and materials.						
	i) With Pakur variety (Other than SAIL/TATA/RINL).	5				5	Each



Sl.	Description of Items.	No.	Length	Width	Height	Quantity	Unit
91	<u>Page No.-88. Item No.-03 (S & P)</u> Construction of septic tank of different capacities as per approved drawing with 1st class brick work in cement mortar (1:4) including two 560 mm dia. R.C.C. manhole cover(heavy type)of approved make supplied, fitted and fixed in the 100mm thick R.C.C (1:1.5:3) top slab with necessary fittings, 20mm thick cement plaster (4 : 1) with neat cement finish to the internal surfaces and 15 mm thick cement plaster (4 : 1) to outside wall upto 200 mm below G.L floor finished with 25 mm thick grey artificial stone over 100 mm thick R.C.C(1:1.5.3) bottom slab including supplying, fitting and fixing all necessary specials, fittings, S.W. tees, C.I. foot rest etc. including excavation earth in all sorts of soil, shoring, bailing out and pumping out water as necessary, ramming, dressing the bed and fefilling the sides of the tanks with earth, removing spoils, filling up the chamber with clear water, removing foreign materials from the chamber and including constructing attached inspection pit as per approved drawing and connecting all necessary pipes, joints etc. with internal plaster work and artificial stone flooring is to be done with admixture of water proofing compound @ 0.5% by weight of cement with all costs of labour and materials. Note:- (i) Finished level of Septic Tank should be 400 mm. from Ground Level. (ii) Height of 50 mm. Ventilation pipe & Mosquito proof mesh, should be follwed as per IS:2470,Part I.Payment will be made separetly on the basis of actual height based on relevant I.S.Code. (iii) For 50 users A) With Pakur variety. (JSW/JSPL/SHYAM/SRMB/ELECTROSTEEL/SSL)	1				1	Each
92	<u>Page No.-88. Item No.-03 (S & P)</u> Construction of circular soak well 2.5 metre deep in all types of sandy soils with dry brick work upto 1.6 metre from the bottom having 150 mm intermediate cement brick work (1:4) band all round and cement brick work (1:4) upto 0.90 metre from top with 20mm thick cement plastering (1:4) to inside face upto the depth of cement brick work, 15mm thick cement plaster (1:4) on outer face from top of the well upto G.L. and 6 mm thick cement plaster (1:4) on top of the R.C.C. cover slab including filling bottom 1.00 metre of inside of the well with brick metal (50 mm to 63 mm size) including R.C.C. cover slab of 100 mm thick with cement conc (1:1.5:3) with stone chips with necessary reinforcement and shuttering including one 560 mm dia. R.C.C. manhole cover (heavy type)of approved make supplied, fitted and fixed in the cover slab with necessary fittings, making necessary arrangements for pipe connections, excavation of well including shoring, dewatering and removing the exess earth from the premises as per direction complete in all respect with all costs of labour and materials. With 250 mm thick dry brick work and 250 mm thick cement brick work (1:6) and 1.00m inside dia. (SAIL/TATA/RINL)	1				1	Each

Sukalpa Tarafdar
SAE 16/09/25
New Barrackpore Municipality

SUKALPA TARAFDAR
Sub-Assistant Engineer
New Barrackpur Municipality

Rajib Chatterjee
AE 16/09/25
New Barrackpore Municipality

RAJIB CHATTERJEE
Assistant Engineer
New Barrckpore Municipality

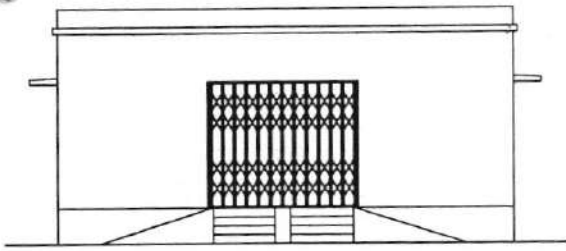
Prabir Saha
Chairman
New Barrackpore Municipality

PRABIR SAHA
Chairman
New Barrackpore Municipality

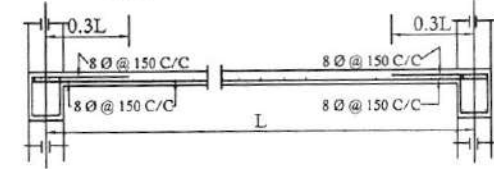
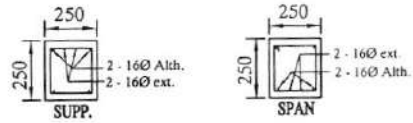
MODEL DRAWING FOR CONSTRUCTION OF C. T./P.T.

Toilet Seats - 5 Nos Urinal 5 Nos

MODEL NO.- A

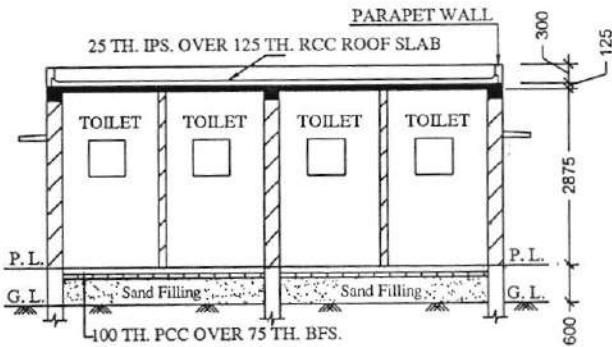


FRONT ELEVATION

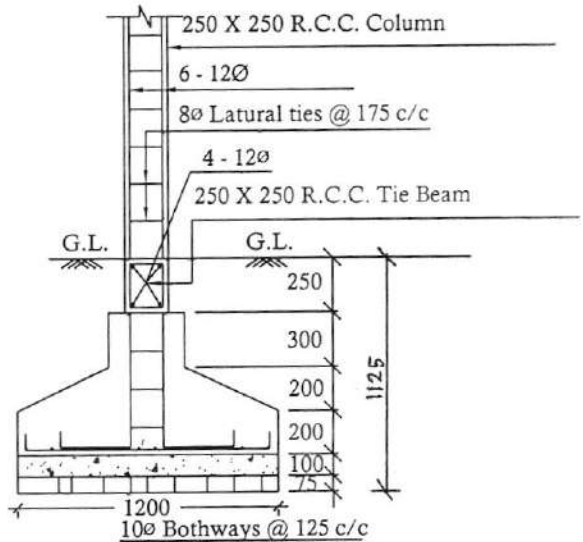


Details Of R.C.C Roof Slab & Beam

(SCALE - 1 : 25)

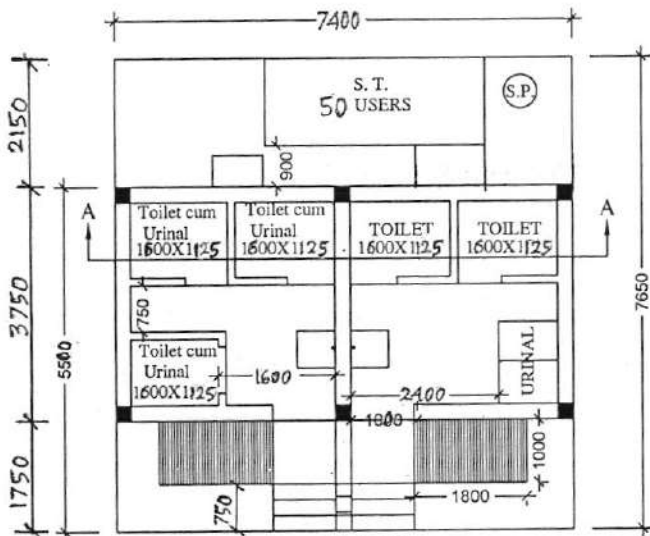


SECTION - 'A - A'

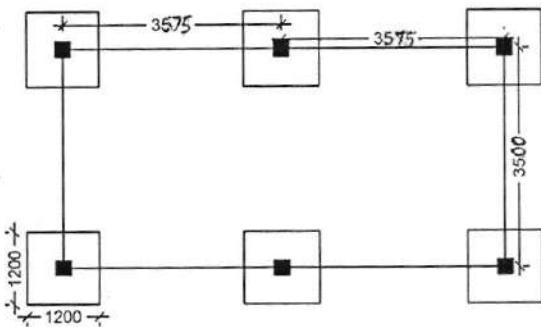


DETAILS OF R. C. C COLUMN

(SCALE - 1 : 25)



PLAN



LAYOUT PLAN

Sukalpa Tarafdar
 16/04/25
SUKALPA TARAFDAR
 Sub- Assistant Engineer
 New Barrackpur Municipality

Rajib Chatterjee
 16/04/25
RAJIB CHATTERJEE
 Assistant Engineer
 New Barrackpore Municipality

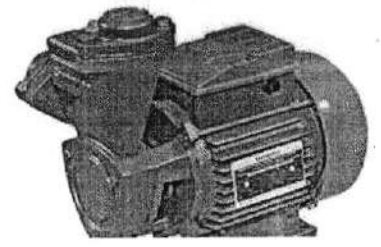
Prabir Saha
PRABIR SAHA
 Chairman
 New Barrackpore Municipality

Home > Power Generation and Distribution Machinery and Accessories > Power sources > Electric alternating current AC motors > MONOBLOCK PUMP (Q3 Category)

crompton MONOBLOCK PUMP, 1 horsepower crompton^R (Monoblock Pump 1 HP)

₹4,774.99 56% OFF

Trends



Ask GeMmy Compare

Product History 2

Sukalpa Tarafdar
16.04/25
SUKALPA TARAFDAR
Sub-Assistant Engineer
New Barrackpur Municipality

Rajib Chatterjee 16/09/25
RAJIB CHATTERJEE
Assistant Engineer
New Barrackpore Municipality

Prabir Saha
PRABIR SAHA
Chairman
New Barrackpore Municipality

CONSTRUCTI OF COMMUNITY TOILET MODEL NO - A NON SCHEDULE WORKS

SL.NO	Item Description & Item No.	Quantity	Rate	Unit	Ammount
1	Non Shedule Item Sl. No. 91-106 (Order as per SUDA) standard plastic dustbin (12lits)	5	350	Each	1750.00
2	Installation of Sinage	1	2071	each	2071.00
3	Air freshner(pack of 4nos)	8	216	Each	1728.00
4	Air freshner (Napthaline 250 gm)	5	210	Each	1050.00
5	Supplying paper Napkin	5	50	Each	250.00
6	Supplying Sanitary Napkin (Whisper or similar make 50 pcs)	4	520	Each	2080.00
7	Harpic (blue 500 ml)	4	300	Each	1200.00
8	Harpic (Red 500 ml)	4	150	Each	600.00
9	Gala double lip floor wiper	4	350	Each	1400.00
10	Colin glass or surface cleaner	2	200	Lit	400.00
11	Muriatic Acid	2	145	Lit	290.00
12	Bleaching powder	4	120	Kg	480.00
13	Dettol ,lifeboy or similar make liquid soap	8	140	Lit	1120.00
14	Rubber hand gloves	6	80	Pair	480.00
15	Double side plastic brush	6	125	Each	750.00
16	Plastic Broom	4	170	Each	680.00
17	Sinage APC based & Reflective vinyl	5	3776	each	18880.00
18	SMS/any other ICT based feedback system (With number displayed on which SMS has to be sent) -	1	5000	each	5000.00
19	Glow Sign board Name and contact details of the following are displayed prominently - Toilet Identification number , name of ULB under which jurisdiction toilet is coverwd , ward number and maintanance authority prominently displayed for each toilet block supervisor, supervisor's agency and area sanitary inspector.	1	5000	each	5000.00
20	Mini Tulu Pump	1	4000	each	4000.00
21	Supplying and fixing sinage with fixing stand post for public toilet for visible to passersby	5	1000	Each	5000.00
22	supplying roaster /register for keeping accoount of regular cleanig	3	200	Each	600.00
23	Lettering on Toilet Wall for display of name and contact details of ULB ward number and name of maintanance authority , saniinspector, etc.	1	1000	each	1000.00
				Rs.	55809.00
	Add for Labour welfare Cess @ 1 %			Rs.	558.09
			Total	Rs.	56367.09
	Add for Contingency @ 3 %			Rs.	1674.27
			TOTAL	Rs.	58041.36
			SAY	Rs.	58041.00

46,809.00
468.09
47,277.09
1,418.31
48,695.40
48,695.60

B = 48,695.00

VETTED

Sukalpa Tarafdar
Assistant Engineer (Civil)
North 24 Pgs Divn., M.E.Dte

SUKALPA TARAFDAR
Sub-Assistant Engineer
New Barrackpur Municipality

Rajib Chatterjee
22/04/25

RAJIB CHATTERJEE
Assistant Engineer
New Barrackpur Municipality

Prabir Saah
PRABIR SAHA
Chairman
New Barrackpore Municipality



রাজ্য নগর উন্নয়ন সংস্থা

STATE URBAN DEVELOPMENT AGENCY

“ইলগাস ভবন”, এইচসি ব্লক, সেক্টর-৩, বিধাননগর, কলকাতা-৭০০ ১০৬, পশ্চিমবঙ্গ
“ILGUS BHAVAN”, HC Block, Sector - III, Bidhannagar, Kolkata - 700 106, West Bengal

SUDA-924/2021/7746

Date : 05.03.2022

From : Shri Joly Chaudhuri, WBCS(Exe.),
Addl. Secretary, UD & MA Department &
Additional Director, SUDA.

To : (1) Commissioner, (All) Municipal Corporation (Except Kolkata MC)
(2) Executive Officer, (All ULBs) Municipality/ NAA.

Sub : Approval of rates for non-schedule items in preparation of estimates
for PT/ CT in connection with ODF+

Sir/ Madam,

Apropos the captioned subject, I am to enclose herewith the rates of non-scheduled items as approved by SUDA to prepare the estimates for refurbishment/ renovation of public toilets and community toilets in connection with ODF+. The rates enclosed are to be considered for the items mentioned against each in preparation of the estimates.

All concerned be kept informed.

Enco : As stated.

Yours faithfully,

Joly Chaudhuri
05.03.2022

Addl. Secretary, UD & MA Dept.
&
Addl. Director, SUDA

SUDA-924/2021/7746/1(5)

Date : 05.03.2022

Copy forwarded for kind information to :

- (1) Chief Engineer, MED.
- (2) Finance Officer, (All ULBs) Municipal Corporation/ Municipality/ NAA.
- (3) Nodal Officer SWM, (All ULBs) Municipal Corporation/ Municipality/ NAA.
- (4) Private Secretary to Hon'ble MOS(IC), UD & MA Department, Govt. of West Bengal.
- (5) PS to Principal Secretary, UD & MA Department, Govt. of West Bengal.

Joly Chaudhuri
05.03.2022

Addl. Secretary, UD & MA Dept.
&
Addl. Director, SUDA

দূরভাষ : ২৩৫৮ ৬৪০৩ / ৫৭৬৭, ফ্যাক্স : ২৩৫৮ ৫৮০০

Tel : 2358 6403/5767, Fax : 2358 5800, E-mail : wbsudadir@gmail.com

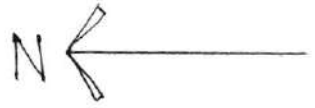
Account Section : 2358 6408

Non Schedule Items that may required in preparation of CT/PT estimates

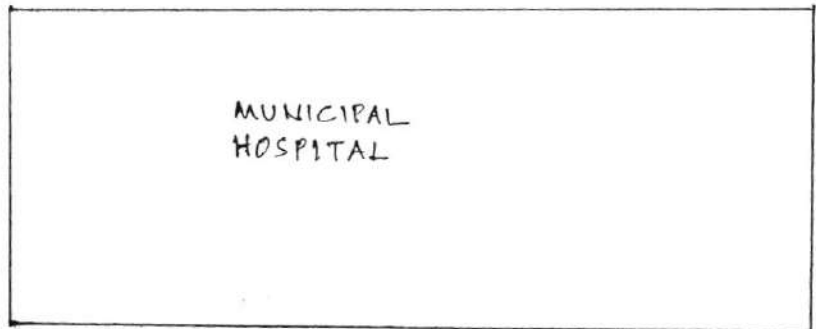
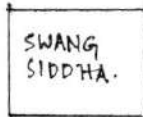
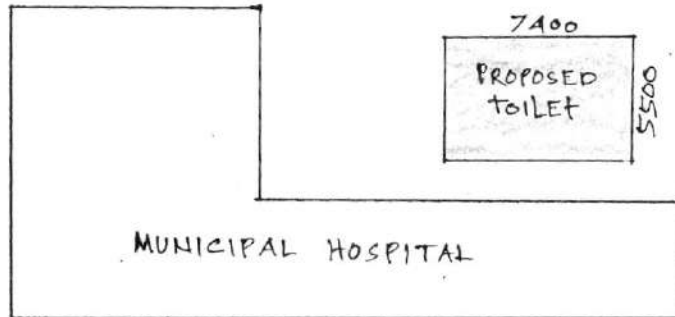
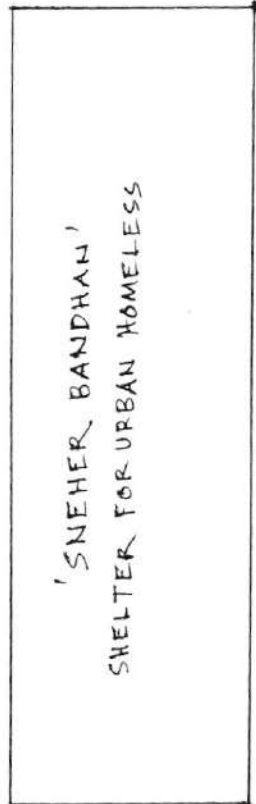
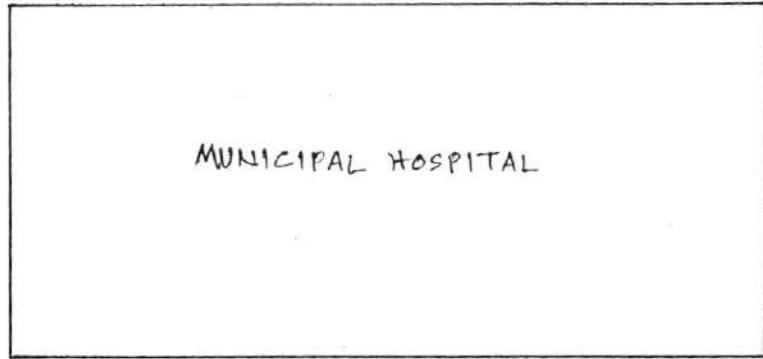
S.L.NO	Description of Items	Unit	Quantity	Rate
1	Standard plastic Dustbin (12 lits)	Each	1	350
2	Installation of Sinage	Each	1	2071
3	Air Freshner (Pack of 4 nos)	Each	1	216
4	Air Freshner (Napthaline 250 gm)	Each	1	210
5	Supplying paper Napkin	Each	1	50
6	Supplying Sanitary Napkin (Whisper or similar make 50 pcs)	Each	1	520
7	Harpic (Blue 500 ml)	Each	1	300
8	Harpic (Red 500 ml)	Each	1	150
9	Gala double lip floor wiper	Each	1	350
10	Colin glass or surface cleaner	Lit	1	200
11	Muriatic Acid	Lit	1	145
12	Bleaching Powder	kg	1	120
13	Dettol,Lifebuy or similar make liquid soap	Lit	1	140
14	Rubber hand Gloves	pair	1	80
15	Double Side plastic brush	each	1	125
16	Plastic Broom	each	1	170
17	Signage ACP Base & reflective vinyl (E8)	each	1	3776.00
18	SMS/any other ICT based feedback system (with number displayed on which SMS has to be sent) (A9)	each	1	5000.00
19	Glow sign board Name and contact details of the following are displayed prominently - Toilet identification number, name of ULB under whose jurisdiction toilet is covered, ward number and maintenance authority prominently displayed for each toilet block Supervisor, Supervisor's agency and area Sanitary Inspector (D3)	each	1	5000.00
20	Mini Tulu pump	Each	1	4000
21	Supplying and fixing sinage with fixing stand post for public toilet for visible to passersby	each	1	1000
22	Supplying roaster/register for keeping account of regular cleaning (D1)	each	1	200
23	Lettering on toilet wall for display of name and contact details of ULB, Ward number and name of maintenance authority, sanitary inspector,etc (D3)	EACH	1	1000

[Signature]
05/08/2022
E.F. - IIDA.

*Counter signed
[Signature]*



B. C. ROY
SARRANI



Sukalpa Tarafdar
17/09/25

SUKALPA TARAFDAR
Sub-Assistant Engineer
New Barrackpur Municipality

Rajib Chatterjee
17/09/25

RAJIB CHATTERJEE
Assistant Engineer
New Barrackpur Municipality

NAME OF WORK:- ESTIMATE FOR ELECTRICAL WORK OF 5 SEATED PUBLIC/COMMUNITY TOILET AT B.C ROY GENERAL HOSPITAL, WARD NO. - 04 UNDER NEW BARRACKPORE MUNICIPALITY OF WEST BENGAL (MODEL NO - A)

[ASPIRATIONAL PARAMETER]

* As per PWD & I & WD schedule district charges will be applicable on PWD & I & WD schedule items

* No district charges will be applicable on non-schedule items

SI No.	Iteam Description	Unit	Quantity	Rate	Amount	Remarks
1	Distribution wiring in 2 x 22/0.3 (1.5 sqmm) single core stranded 'FR' PVC insulated & unsheathed copper wire (Brand approved by EIC) in 20mm size PVC rigid conduit 'FR' (Precision make), with 1x22/0.3 (1.5 sqmm) single core stranded 'FR' PVC insulated & unsheathed copper wire for ECC, to light/fan/call bell points with Piano Key type switch fixed on MS CRC sheet metal (16 SWG) switch board cum JB on wall complete with 2 no. suitable size "Ph & N" copper bar incl. bakelite/Perspex (wall matching color) top cover 3 mm thick and incl. 175mmx100mmx65mm inspection box, making earthing attachment, painting the MS box and mending good the damages to original finish. [PWD Schedule Page No-E-14 Iteam No-2a] Average run 5 mtr	Point	16	612.00	9792.00	
2	Distribution wiring in 1.1 KV grade 22/0.3 (1.5 sqmm) single core stranded 'FR' PVC insulated & unsheathed copper wire (Brand approved by EIC) in 20mm size PVC rigid conduit 'FR' (Precision make), with 1.1 KV grade 1 x 22/0.3 (1.5 sqmm) single core stranded 'FR' PVC insulated & unsheathed copper wire as ECC, to 5A 3 pin flush type plug socket & Piano Key type switch fixed on MS CRC sheet metal (16 SWG) switch board cum JB on wall incl. bakelite/Perspex (wall matching color) top cover 3 mm thick and incl. painting the MS box and mending good the damages to original finish On Board (only for pay counter) [PWD Schedule Page No-E-15; 1-4a]	Point	1	67.00	67.00	
3	Supplying and fixing 240V 32A Double Pole AC Type 30mA RCCB.(Complete Set) (ISI marked) [Make- Legrand] (Cat No 4113/95) [Legrand Page No-92]	Nos	1	5942.00	5942.00	
4	Distribution wiring in 1.1 KV single core stranded 'FR' PVC insulated & unsheathed copper wire (Brand approved by EIC) in 20mm size PVC rigid conduit 'FR' (Precision make) incl. necy. fittings as required 2 x 36/0.3 (2.5 sqmm) + 1 x 22/0.3 (1.5 sqmm) ECC [PWD Schedule Page No-E-14 Iteam No-1a(ii)]	mtr	20	119.00	2380.00	

5	Supplying and fixing double-door SPN MCB Distribution Board with IP-42/43 protection, concealed in wall after cutting the wall & mending good the damages to original finish incl. Inter connection with suitable size of copper wire and neutral link & provision for earthing attachment. a) For (2+4 way) (Make -Havells) [PWD Schedule Page No-D-9;Item No-13]	No	1	935.00	935.00
6	Supplying and fixing 240/415 V MCB of Breaking capacity 10kA & C characteristics on din rail of existing DBs and necessary connection 6-32A SP MCB (Make -Havells) [PWD Schedule Page No-D-6;Item No-7]	Nos	4	168.00	672.00
7	Supplying and fixing 240/415 V MCB Isolator on din rail of existing DBs and necessary connection. 40A DP MCB Isolator (Make -Havells) [PWD Schedule Page No-D-5;Item No-6]	Nos	1	208.00	208.00
8	Supply of TMC501 conventional industrial batten (Philips make) LED Tube,model no- TMC501 P1xT-LED 22W P3241 (WB I & WD schedule P-113, I- 5:3 F.22)	Nos	4	451.00	1804.00
9	Fixing only single/twin fluroscnt light fitting complete with all accessories directly on wall/ceiling by screws etc. [PWD Schedule Page No-C-2;Item No-14a]	Nos	4	86.00	344.00
10	Supply & fixing Bulk head light fittings with die cast aluminium housing frosted/clear glass on wall/ceiling incl S/F 9 watt LED Lamp complete set. [Make - Havells] (PWD sch - Page--D-13, I-23)	Nos	6	569+ District Charges+75= 644.00	3864.00
11	Supply & fixing smart bright street light complete with all accessories to be fixed from the wall of building or on pole incl. making holes /providing clamping arrangement & necy. GI reducer as required.S&F 40 mm GI Pipe 1.5 mtr average length & s&f necy length of 1.5 sqmm pvc insulated single core copper wire & making connections as required & mending good damages incl wall paingting. (30 Watt) (Make - Bajaj) [WB I&WD sch P-111, I-f.9.0.2]	Nos	1	3016.00	3016.00
12	Supply of 9" domestic metal exhaust fan 9" (225mm)SWEEP TRANS AIR - (Make-Crompton/Havells/Bajaj) (UD & MA schedule P-14, I-5)	Nos	3	1863.00	5589.00
13	Fixing only exhaust fan after making hole in wall and making good damages and smooth cement finish etc. as practicable as possible and providing necy. length of PVC insulated wire and making connection for exhaust of following diameter: 22.5 cm (9") [PWD Schedule Page No-C-4;Item No-28(b)]	Nos	3	247.00	741.00

14	Fixing only louver shutter/cowl on wall with necy. bolts & nuts (6 mm dia x 62 mm long) For 22.5 cm(9") Exhaust fan [PWD Schedule Page No-C-4;Item No-30(b)]	Nos	3	82.00	246.00
15	Supply of 240V A C Ceiling Fan (48" sweep,1200 mm complete) [Make-Crompton [for counter only] (UD & MA schedule P- 23, I- 70)	Each	1	2283.00	2283.00
16	Fixing only Ceiling Fan [PWD sch P- C-3, I-21(a)]	Each	1	66.00	66.00
17	Supply & Fixing 240 V, 16/20 A Piano key type switch (Brand approved by EIC) on sheet metal switch board incl. S & F 100x100x65mm MS (16SWG) switch board and bakelite/perspex top cover of 3mm thick by Brass screws after making housing for switch by cutting bakelite/perspex cover and making necessary connections as required. (For Hand Dryer machine) [PWD sch P- E-6, I-17(b)]	Each	1	201.00	201.00
18	S/F 240V 25A Modular type starter (brand approved by EIC)with 25 A. Modular switch DP MCB (C-Curve)and 4 Module G.I. Moduar type switch board with 4 Module Top Cover Plate flushed in wall incl. S/F switch board and Cover Plate and making necy. Connections with PVC Copper wire and earth connectivity wire etc. as per schedule [for Pump] [PWD Schedule Page No-E-19, Item No-17] (Please follow in details)	Nos	1	784.00	784.00
19	Supply and Fixing of 2 mm Polyvinyl glow sign board made of 22 SWG GI sheet box with 1"X1" aluminum channel for fixing the vinyl board after necessary cutting the letter as required & s/f LED tube light fittings along with all accessories. (16 sqft @495.00/sqft) (UD & MA schedule P-14, I-4)	Nos	1	7920.00	7920.00
20	Earthing installation by GI earth Spike (1830 X 20 mm) including 8SWG GI EarthWire & GI nuts, bolts, washer etc.	Nos	1	450.00	450.00
Total					47304.00
Add 18% GST					8514.72
Total With GST (A)					55818.72
Cess@1%					558.18
total					56376.90
Contingency Amount on "A"					1674.56
(Total+GST)=Rs:					58051.46
Say Rs.					58051.00
Service Connection Charges as per Quotation					

Amjir Khan 07/05/2025
Sub Assistant Engineer
New Barrackpore Municipality

Samuel
Chairman
New Barrackpore Municipality

Vetted for the amount of Rs. 58051/-

Kanad Sen
28/05/2025
Executive Engineer
Kolkata Metropolitan Development Authority

NAME OF WORK:- ESTIMATE FOR ELECTRICAL WORK OF 5 SEATED PUBLIC/COMMUNITY TOILET AT B.C ROY HOSPITAL WARD NO. -04 UNDER NEW BARRACKPORE MUNICIPALITY OF WEST BENGAL (MODEL NO -

A)
[ASPIRATIONAL PARAMETER]

* As per PWD & I & WD schedule district charges will be applicable on PWD & I & WD schedule items

* No district charges will be applicable on non-schedule items

SI No.	Iteam Description	Unit	Quantity	Rate	Amount	Remarks
1	Distribution wiring in 2 x 22/0.3 (1.5 sqmm) single core stranded 'FR' PVC insulated & unsheathed copper wire (Brand approved by EIC) in 20mm size PVC rigid conduit 'FR' (Precision make), with 1x22/0.3 (1.5 sqmm) single core stranded 'FR' PVC insulated & unsheathed copper wire for ECC, to light/fan/call bell points with Piano Key type switch fixed on MS CRC sheet metal (16 SWG) switch board cum JB on wall complete with 2 no. suitable size "Ph & N" copper bar incl. bakelite/Perspex (wall matching color) top cover 3 mm thick and incl. 175mmx100mmx65mm inspection box, making earthing attachment, painting the MS box and mending good the damages to original finish. [PWD Schedule Page No-E-14 Iteam No-2a]	Point	19	612.00	11628.00	ADD DISTRICT CHARGES
	Average run 5 mtr					
2	Distribution wiring in 1.1 KV grade 22/0.3 (1.5 sqmm) single core stranded 'FR' PVC insulated & unsheathed copper wire (Brand approved by EIC) in 20mm size PVC rigid conduit 'FR' (Precision make), with 1.1 KV grade 1 x 22/0.3 (1.5 sqmm) single core stranded 'FR' PVC insulated & unsheathed copper wire as ECC, to 5A 3 pin flush type plug socket & Piano Key type switch fixed on MS CRC sheet metal (16 SWG) switch board cum JB on wall incl. bakelite/Perspex (wall matching color) top cover 3 mm thick and incl. painting the MS box and mending good the damages to original finish On Board (only for pay counter) [PWD Schedule Page No-E-15; I-4a]	Point	2	67.00	134.00	ADD DISTRICT CHARGES
3	Supplying and fixing 240V 32A Double Pole AC Type 30mA RCCB.(Complete Set) (ISI marked) [Make- Legrand] (Cat No 4113/95) [Legrand Page No-92]	Nos	1	5942.00	5942.00	NO DISTRICT CHARGES
4	Distribution wiring in 1.1 KV single core stranded 'FR' PVC insulated & unsheathed copper wire (Brand approved by EIC) in 20mm size PVC rigid conduit 'FR' (Precision make) incl. necy. fittings as required 2 x 36/0.3 (2.5 sqmm) + 1 x 22/0.3 (1.5 sqmm) ECC [PWD Schedule Page No-E-14 Iteam No-1a(ii)]	mtr	20	119.00	2380.00	ADD DISTRICT CHARGES

NAME OF WORK:- ESTIMATE FOR ELECTRICAL WORK OF 5 SEATED PUBLIC/COMMUNITY TOILET AT B.C ROY HOSPITAL WARD NO. -04 UNDER NEW BARRACKPORE MUNICIPALITY OF WEST BENGAL (MODEL NO - A)
[ASPIRATIONAL PARAMETER]

* As per PWD & I & WD schedule district charges will be applicable on PWD & I & WD schedule items

* No district charges will be applicable on non-schedule items

SI No.	Item Description	Unit	Quantity	Rate	Amount	Remarks
1	Distribution wiring in 2 x 22/0.3 (1.5 sqmm) single core stranded 'FR' PVC insulated & unsheathed copper wire (Brand approved by EIC) in 20mm size PVC rigid conduit 'FR' (Precision make), with 1x22/0.3 (1.5 sqmm) single core stranded 'FR' PVC insulated & unsheathed copper wire for ECC, to light/fan/call bell points with Piano Key type switch fixed on MS CRC sheet metal (16 SWG) switch board cum JB on wall complete with 2 no. suitable size "Ph & N" copper bar incl. bakelite/Perspex (wall matching color) top cover 3 mm thick and incl. 175mmx100mmx65mm inspection box, making earthing attachment, painting the MS box and mending good the damages to original finish. [PWD Schedule Page No-E-14 Item No-2a] Average run 5 mtr	Point	19	612.00	11628.00	ADD DISTRICT CHARGES
2	Distribution wiring in 1.1 KV grade 22/0.3 (1.5 sqmm) single core stranded 'FR' PVC insulated & unsheathed copper wire (Brand approved by EIC) in 20mm size PVC rigid conduit 'FR' (Precision make), with 1.1 KV grade 1 x 22/0.3 (1.5 sqmm) single core stranded 'FR' PVC insulated & unsheathed copper wire as ECC, to 5A 3 pin flush type plug socket & Piano Key type switch fixed on MS CRC sheet metal (16 SWG) switch board cum JB on wall incl. bakelite/Perspex (wall matching color) top cover 3 mm thick and incl. painting the MS box and mending good the damages to original finish On Board (only for pay counter) [PWD Schedule Page No-E-15; 1-4a]	Point	2	67.00	134.00	ADD DISTRICT CHARGES
3	Supplying and fixing 240V 32A Double Pole AC Type 30mA RCCB.(Complete Set) (ISI marked) [Make- Legrand] (Cat No 4113/95) [Legrand Page No-92]	Nos	1	5942.00	5942.00	NO DISTRICT CHARGES
4	Distribution wiring in 1.1 KV single core stranded 'FR' PVC insulated & unsheathed copper wire (Brand approved by EIC) in 20mm size PVC rigid conduit 'FR' (Precision make) incl. necy. fittings as required 2 x 36/0.3 (2.5 sqmm) + 1 x 22/0.3 (1.5 sqmm) ECC [PWD Schedule Page No-E-14 Item No-1a(ii)]	mtr	20	119.00	2380.00	ADD DISTRICT CHARGES

5	Supplying and fixing double-door SPN MCB Distribution Board with IP-42/43 protection, concealed in wall after cutting the wall & mending good the damages to original finish incl. Inter connection with suitable size of copper wire and neutral link & provision for earthing attachment. a) For (2+4 way) (Make -Havells) [PWD Schedule Page No-D-9;Item No-13]	No	1	935.00	935.00	ADD DISTRICT CHARGES
6	Supplying and fixing 240/415 V MCB of Breaking capacity 10kA & C characteristics on din rail of existing DBs and necessary connection 6-32A SP MCB (Make -Havells) [PWD Schedule Page No-D-6;Item No-7]	Nos	4	168.00	672.00	ADD DISTRICT CHARGES
7	Supplying and fixing 240/415 V MCB Isolator on din rail of existing DBs and necessary connection. 40A DP MCB Isolator (Make -Havells) [PWD Schedule Page No-D-5;Item No-6]	Nos	1	208.00	208.00	ADD DISTRICT CHARGES
8	Supply of TMC501 conventional industrial batten (Philips make) LED Tube, model no- TMC501 P1xT-LED 22W P3241 (WB I & WD schedule P-113, I- 5:3 F.22)	Nos	5	451.00	2255.00	ADD DISTRICT CHARGES
9	Fixing only single/twin fluroscent light fitting complete with all accessories directly on wall/ceiling by screws etc.. [PWD Schedule Page No-C-2;Item No-14a]	Nos	5	86.00	430.00	ADD DISTRICT CHARGES
10	Supply & fixing Bulk head light fittings with die cast aluminium housing frosted/clear glass on wall/ceiling incl S/F 9 watt LED Lamp complete set. [Make - Havells] (PWD sch - Page--D-13, I-23)	Nos	7	579+ District Charges+75= 654.00	4578.00	ADD DISTRICT CHARGES
11	Supply & fixing smart bright street light complete with all accessories to be fixed from the wall of building or on pole incl. making holes /providing clamping arrangement & necy. GI reducer as required.S&F 40 mm GI Pipe 1.5 mtr average length & s&f necy length of 1.5 sqmm pvc insulated single core copper wire & making connections as required & mending good damages incl wall painting. (30 Watt) (Make - Bajaj) [WB I&WD sch P-111, I-f.9.0.2]	Nos	1	3016.00	3016.00	ADD DISTRICT CHARGES
12	Supply of 9" domestic metal exhaust fan 9" (225mm)SWEEP. TRANS AIR - (Make-Crompton/Havells/Bajaj) (UD & MA schedule P-14, I-5))	Nos	4	1863.00	7452.00	NO DISTRICT CHARGES
13	Fixing only exhaust fan after making hole in wall and making good damages and smooth cement finish etc. as practicable as possible and providing necy. length of PVC insulated wire and making connection for exhaust of following diameter: 22.5 cm (9") [PWD Schedule Page No-C-4;Item No-28(b)]	Nos	4	247.00	988.00	ADD DISTRICT CHARGES

14	Fixing only louver shutter/cowl on wall with necy. bolts & nuts (6 mm dia x 62 mm long) For 22.5 cm(9") Exhaust fan [PWD Schedule Page No-C-4; Item No-30(b)]	Nos	4	82.00	328.00	ADD DISTRICT CHARGES
15	Supply of 240V A.C Ceiling Fan (48" sweep, 1200 mm complete) [Make-Crompton [for counter only] (UD & MA schedule P- 23, I- 70)	Each	1	2283.00	2283.00	NO DISTRICT CHARGES
16	Fixing only Ceiling Fan [PWD sch P- C-3, I-21(a)]	Each	1	66.00	66.00	ADD DISTRICT CHARGES
17	Supply & Fixing 240 V, 16/20 A Piano key type switch (Brand approved by EIC) on sheet metal switch board incl. S & F 100x100x65mm MS (16SWG) switch board and bakelite/perspex top cover of 3mm thick by Brass screws after making housing for switch by cutting bakelite/perspex cover and making necessary connections as required. (For Hand Dryer machine) [PWD sch P- E-6, I-17(b)]	Each	2	201.00	402.00	ADD DISTRICT CHARGES
18	S/F 240V 25A Modular type starter (brand approved by EIC) with 25 A. Modular switch DP MCB (C-Curve) and 4 Module G.I. Modular type switch board with 4 Module Top Cover Plate flushed in wall incl. S/F switch board and Cover Plate and making necy. Connections with PVC Copper wire and earth connectivity wire etc. as per schedule [for Pump] [PWD Schedule Page No-E-19, Item No-17] (Please follow in details)	Nos	1	784.00	784.00	ADD DISTRICT CHARGES
19	Supply and Fixing of 2 mm Polyvinyl glow sign board made of 22 SWG GI sheet box with 1"X1" aluminum channel for fixing the vinyl board after necessary cutting the letter as required & s/f LED tube light fittings along with all accessories. (16 sqft @495.00/sqft) (UD & MA schedule P-14, I-4)	Nos	1	7920.00	7920.00	NO DISTRICT CHARGES
20	Earthing installation by GI earth Spike (1830 X 20 mm) including 8SWG GI EarthWire & GI nuts, bolts, washer etc.	Nos	1	450.00	450.00	NO DISTRICT CHARGES
					Total	52851.00
					Add 18% GST	9513.18
					Total With GST (A)	62364.18
					Cess@1%	623.64
					total	62987.82
Contingency Amount on "A"					Contingency@3%	1870.93
(Total+GST)=Rs:					Total	64858.75
					Say Rs.	64859.00

Service Connection Charges as per Quotation

Say Rs. 64,589.00

Technically Vetted Rs. 64,859.00

(Rupees SIXTY FOUR THOUSAND EIGHT HUNDRED FIFTY NINE ONLY.)

Anjil Khan
02/06/2025

Sub Assistant Engineer
New Barrackpore Municipality

Sub-Assistant Engineer (Electrical)
New Barrackpore Municipality

Debarshi
Chairman
New Barrackpore Municipality

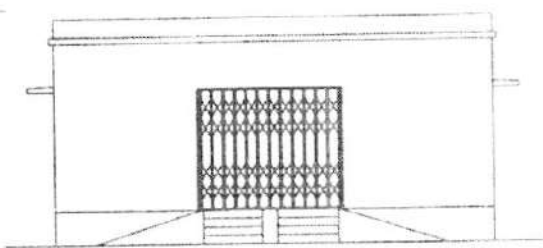
P. K. S. B. S. A.
Chairman
New Barrackpore Municipality

60
17.06.25
Junior Engineer
Electrical & Mechanical Division
SUDA

MM
17.6.25
ASSISTANT ENGINEER
ELECTRICAL & MECHANICAL DIVISION
SUDA

ds
18/6/25
Executive Engineer (E/M)
O/O the Secretary M.E. Dte.
Government of West Bengal

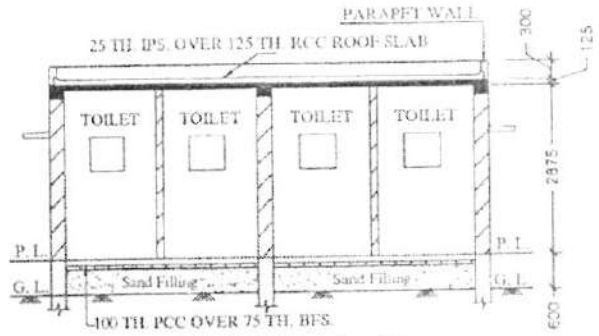
MODEL DRAWING FOR CONSTRUCTION OF C.T. & P.
 Toilet Seats - 5 Nos Urinal 5 Nos
 MODLE NO.- A



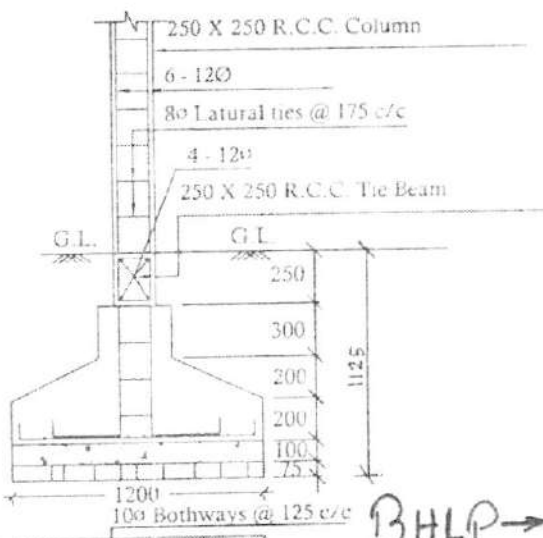
FRONT ELEVATION



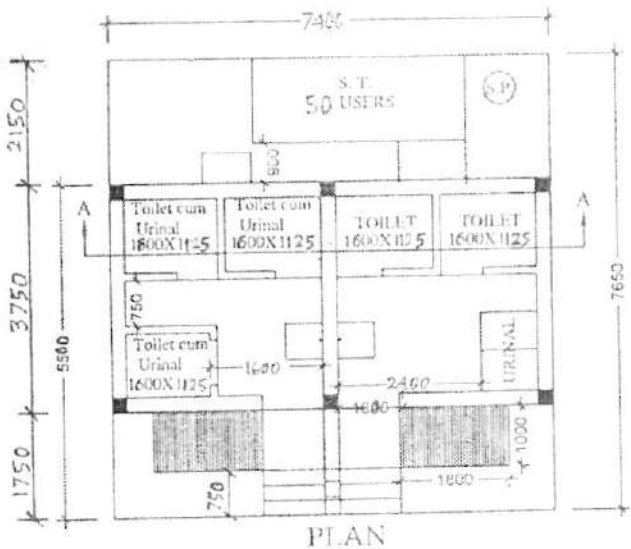
Details Of R.C.C Roof Slab & Beam
 (SCALE - 1:25)



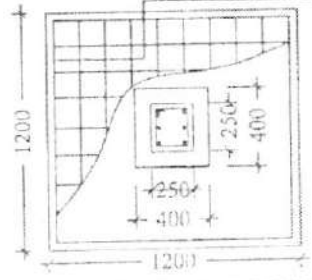
SECTION - 'A - A'



DETAILS OF R. C. C COLUMN
 (SCALE - 1:25)

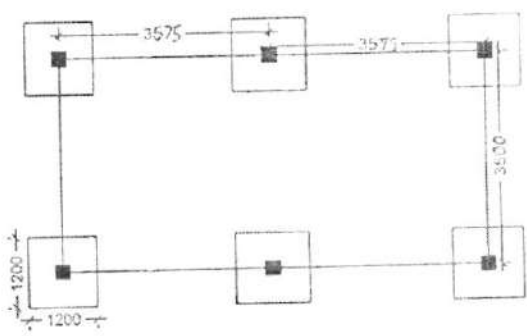


PLAN



BHLP → 07
 TL → 05
 OL → 01
 EF → 04
 OL → 01
 GCSB → 01

19 pbs



LAYOUT PLAN

Sukalpa Tarafdar
SUKALPA TARAFDAR
 Sub-Assistant Engineer
 New Barrackpur Municipality

Kajib Chatterjee
KAJIB CHATTERJEE
 Assistant Engineer
 New Barrackpore Municipality

Prabir Saah
PRABIR SAHA
 Chairman
 New Barrackpore Municipality