

**Estimate for construction of Public Toilet at Purbachal KBM, Sakuntala in Ward 20 under Chakdaha Municipality  
Model- F (Toilet Seat - 2, Nos and Urinal - 3 Nos)**

Rate As per PWD Building Works Schedule ( Volume 1) With effect from 01.11.2017

**Civil Works**

SL.NO	Item Description & item No.	Quantity	Rate	Unit	Amount
1	Earth work in excavation of foundation trenches or drains, in all sorts of soil (including mixed soil but excluding laterite or sandstone) including removing, spreading or stacking the spoils within a lead of 75 m. as directed. The item includes necessary trimming the sides of trenches, levelling, dressing and ramming the bottom, bailing out water as required complete. (a) Depth of excavation not exceeding 1,500 mm. PWD Building Works schedule Page - 1, Item -2.a	7.770	119.27	Cu.m	926.73
2	Earth work in filling in foundation trenches or plinth with good earth, in layers not exceeding 150 mm. including watering and ramming etc. layer by layer complete. (Payment to be made on the basis of measurement of finished quantity of work). (a) With earth obtained from excavation of foundation. PWD Building Works schedule, Page - 1, Item -3.a	5.816	77.54	%um	450.97
3	(A) Filling in foundation or plinth by silver sand in layers not exceeding 150 mm as directed and consolidating the same by thorough saturation with water, ramming complete including the cost of supply of sand. (payment to be made on measurement of finished quantity). PWD Building Works schedule, Page - 2, Item -4.a	5.730	936.21	Cum	5364.48
4	Single Brick Flat Soiling of picked jhama bricks including ramming and dressing bed to proper level and filling joints with local sand. PWD Building Works schedule, Page- 14, Item - 1 ( Corri. Page-01, Date-04-06-2018)	23.52	361.00	Sqm	8490.72
5	Ordinary Cement concrete (mix 1:2:4) with graded stone chips (20mm nominal size) excluding shuttering and reinforcement, if any, in ground floor PWD Building Works schedule, Page -23, Item -1.(b), ( Corri. Page- 09, Date-04-06-2018) Rate Analysis ( Corri. Page-01, Date-04-06-2018)	2.120	5425.29	m3	11501.61
6	Reinforcement for reinforced concrete work in all sorts of structures including distribution bars, stirrups, binders etc initial straightening and removal of loose rust (if necessary), cutting to requisite length, hooking and bending to correct shape, placing in proper position and binding with 16 gauge black annealed wire at every intersection, complete as per drawing and direction. (a) For works in foundation and upto roof of ground floor/upto 4 m. (b) For steel/Mild Steel, other manufacturer. PWD Building Works schedule, Page - 43, Item - 40.a.i.1( Corri. 10th Page-01, Date-23-01-2020) (Rate Analysis)	0.692	53604.44	M.T.	37094.27
7	Ordinary Cement concrete (mix 1:1.5:3) with graded stone chips (20 mm nominal size) excluding shuttering and reinforcement, if any, in ground floor as per relevant IS codes. a) Pakur Variety /Chandil Variety PWD Building Works schedule, p-26 Item 10 a (Rate Analysis)	7.340	5917.81	Cum	43436.73

SL.NO	Item Description & Item No.	Quantity	Rate	Unit	Amount
8	25mm. thick damp proof course with cement concrete with stone chips (1:1.5:3) [with graded stone aggregate 10 mm nominal size] and admixture of water proofing compound as per manufacturer's specification followed by two coat of polymer based paint, (1st coat after 4 to 5 days of concrete laying and 2 nd coat just before brick masonry work) as directed (cost of water proofing compound & polymer based paint to be paid separately).(Chequering not required over concrete or painted surface). [Note: - Waterproofing as per Item 9, polymer based paint as per item 8 (a) of subhead C of Section (C). PWD Building Works schedule, Page -47, Item -1 (Rate Analysis)	5.80	265.95	Sqm	1542.51
9	Supplying and laying polychine sheet ( 150 gm/sq.m ) over dampproof course or below flooring or roof terracing or foundation or foundation trenches. PWD Building Works schedule, Page -47, Item-3	13.73	24.00	Sq.M.	<del>908.88</del> 329.52
10	Hire and labour charges for shuttering with centering and necessary staging upto 4 m using approved stout props and thick hard wood planks of approved thickness with required bracing for concrete slabs, beams and columns, lintels curved or straight including fitting, fixing and striking out after completion of works (upto roof of ground floor) 36. (f) 25 mm to 30 mm shuttering without staging in foundation PWD Building Works schedule, Page -43, Item- 36.f	19.83	209.00	Sqm	4144.47
	36. (a) 25 mm to 30 mm thick wooden shuttering as per decision & direction of Engineer-In-Charge.	40.79	335.00	Sqm	13664.65
11	Collapsible gate with 40 mm x 10 mm x 6 mm Tee as top and bottom guide rail, 20 mm x 10 mm x 2 mm vertical channels 100 mm apart in fullt stretched position. 20mm x 5 mm MS flats as collapsible bracings properly reveted and washed including 38 mm steel roller including locking arrangements, fitted and fixed in position with lugs set in cement concrete including cutting necessary hikas chasing etc in walls, floors etc and making good all damages. PWD Building Works schedule, Page -106, Item- .18	4.20	4330.00	Sqm	<del>14288.40</del> 18186.00
12	Brick work with 1st class bricks in cement mortar (1:4) 7.(a) Foundation and plinth ground floor PWD Building Works schedule, Page -15, Item-7.a (Rate Analysis)	3.190	5368.05	Cu.m	17124.08
	7.(b) supersstructure ground floor	8.70	5591.05	Cu.m	48642.14
13	125 mm brick work with 1st classbricks in cement mortar ( 1:4) in ground floor PWD Building Works schedule, Page -16, Item-16,cori page -3, date - 04.06.2018 (Rate Analysis)	11.49	728.53	Sq.M.	<del>19668.69</del> 9370.81
14	Labour for Chipping of concrete surface before taking up Plastering work. PWD Building Works schedule, P-192, It-1	44.46	21.00	Sqm	933.66
15	Plaster (to wall, floor, ceiling etc.) with sand and cement mortar including rounding off or chamfering corners as directed and raking out joints including throating, raking and drip course, scaffolding/staging where necessary (Ground floor). [Excluding cost of chipping over concrete surface] (i) With 1:5 cement mortar (c) 15 mm thick plaster PWD Building Works schedule, P-189 It- No. 1 (Rate Analysis)	84.81	148.55	Sqm	<del>29325.76</del> 12598.52
	(i) With 1:4 cement mortar (c) 10 mm thick plaster	10.23	130.55	Sqm	1335.53

SL.NO	Item Description & Item No.	Quantity	Rate	Unit	Ammount
16	Neat cement punning about 1.5 mm thick in wall ,dado, window sills, floors etc . Note cement 0.152 m3/100 m2 PWD Building Works schedule, P-192, It-15	9.21	32.75	Sq.m	301.63
17	Supplying, fitting and fixing fibre reinforced polymer (FRP) Composite door frame as per approved section with glass fibre reinforced plastic moulded skins and a special sandwich core, so as to impart monolithic composite structure as per approved technology of Department of Science and Technology (DST) to satisfy IS: 4020 door testing performance criteria., (i) 66mm x 90mm PWD Building Works schedule, P-115, It - 3 (i)	10.20	497.00	Mtr	5069.40
18	Supplying, fitting & fixing fibre reinforced polymer (FRP) Composite door shutters as per approved design with glass fibre reinforced plastic moulded skins and a special sandwich core, so as to impart monolithic composite structure as per approved technology of Department of Science and Technology (DST) to satisfy IS:4020 door testing performance criteria. In ground floor. (ii) 25 mm thick PWD Building Works schedule, P-192, It-1	3.60	2581.00	Sqm	9291.60
19	Anodised aluminium barrel / tower / socket bolt (full covered) of approved manufactured from extruded section conforming to I.S. 204/74 fitted and fixed with cadmium plated screws . (vii) 225mm long x 10mm dia. bolt. PWD Building Works schedule, P-144, It No. 26 (vii)	2.00	84.00	Each	<del>420.00</del> 168.00
20	Iron butt hinges of approved quality fitted and fixed with steel screws, with ISI mark (viii) 100mm X 75mm X 3.50mm. PwD Building Works schedule, P-240, It No. -5 (viii)	6.00	66.00	Each	<del>990.00</del> 396.00
21	Anodised aluminium decorative handle (hexagonal / fluted) of approved quality fitted and fixed complete. (i) 150mm plate x 10mm dia rod x 12mm hexagonal/fluted. PwD Building Works schedule, Page -146 . Item no-31,(i)	4.00	87.00	Each	<del>870.00</del> 348.00
22	Iron rasp bolt of approved quality fitted and fixed complete (oxidised) with 16mm dia rod with concrete bolt and round fitting. (b) 250mm long. PwD Building Works schedule, Page -142 . Item no-10 b)	2.00	159.00	Each	<del>795.00</del> 318.00
23	Supplying, fitting and fixing Stainless Steel railing consist of 38mm dia and 900mm height vertical balustrade at every two alternative steps, 50mm dia top rail, 3 (three) nos 10 mm dia horizontal Stainless steel pipe and base/cover plate with Stainless Steel GRADE 304 containing 7.5% nickle (Interior Grade) Brushed/Mat finish, complete as per direction of the Engineer-in-charge. Weight of Strainless Steel railing per metre 6.5 Kg (approx) PwD Building Works schedule, P-122 . Item-22	3.00	9077.00	meter	27231.00
24	Rendering the Surface of walls and ceiling with White Cement base WATER PROOF wall putty of approved make & brand.(1.5 mm thick) In Ground Floor PwD Building Works schedule, PwD, P- 198, 1-5	95.04	122.00	Sqm	11594.88
25	Acrylic Dispersant for interior wall, ceiling with a coat of solvent based interior grade acrylic primer (as per manufacturer's specification) including cleaning and smoothing of surface. Two Coats PwD Building Works schedule, Page -196 . Item no- 10 .	<del>95.04</del> <del>29.50</del>	<del>70.00</del>	m2	<del>6652.80</del> <del>2065.00</del>

SL.NO	Item Description & Item No.	Quantity	Rate	Unit	Amount
26	Applying exterior grade Acrylic Primer of approved quality and brand on plastered or concrete surface old or new surface to receive Decorative Textured (Marrr Finish) or Smooth Finish Acrylic exterior emulsion paint including scraping and preparing the surface thoroughly, complete as per manufacturer's specification and as per direction of the EIC in Ground Floor (b) two coats. PWD Building Works schedule, Page -196, Item no- 8(b)	61.58	45.10	m2	2777.26
27	Protective and Decorative Acrylic Exterior emulsion paint of approved quality, as per manufacturer's specification and as per direction of EIC to be applied over Acrylic primer as required. The rate includes cost of materials, labour, scaffolding and all incidental charges but excluding the cost of primer in ground floor (two coats)(a) normal acrylic emulsion. PWD Building Works schedule, Page -197, Item no- 17(a)	61.58	67.00	m2	4125.86
28	(b) Priming one coat on timber or plastered surface with synthetic oil bound primer of approved quality including smoothening surfaces by sand papering etc. PWD Building Works schedule, Page -200, Item no- 1 (b)	9.21	38.00	Sqm	349.98
29	(A) Painting with best quality synthetic enamel paint of approved make and brand including smoothening surface by sand papering etc. including using of approved putty etc. on the surface, if necessary : Page -200, Item no- 1 (b) (c) On timber or plastered surface : (i) with super gloss (high gloss) (ii) two coats (with any shade except white) PWD Building Works schedule, Page -200, Item no- 2(A)(a)(iv)	9.21	81.00	Sqm	746.01
30	Supplying, fitting and fixing windows and ventilators with or without integrated grills conforming to IS1038-1975 and manufactured from rolled steel sections conforming to IS7452-1974 with non-friction projecting type, box type hinges, glazing clips, lugs locking bracket, handle plate etc, including holding in position, straightening if required, fixing lugs in cement concrete(1:2:4) with stone chips 20mm down cutting hole sand mending good damages to match with existing surface complete in all respect including glazing. b) Operable steel windows as per IS sizes with side hung shutters and horizontal glazing bars. [The extra rate admissible for the operable portion only] PWD Building Works schedule, P-107 Item-20 (3rd Corri. Page-91, Date-04-06-2016)	2.900	1904.00	Sqm	5521.60
	(viii) M.S. integrated grill as per approved design integrated with steel window or ventilator, joints continuously welded with M.S. flats and bars	48.000	79.00	kg	3792.00
31	Supplying bubble free float glass of approved make and brand conforming to IS: 2835-1987. (iv) 5mm thick coloured / tinted / smoke glass PWD Building Works schedule, P-243, I-5	2.56	585.00	Sq.M.	1497.60
32	a) Priming one coat on steel or other metal surface with synthetic oil bound primer of approved quality including smoothening surfaces by sand papering etc. PWD Building Works schedule, P-107, Item-20(b)	7.17	29.00	Sqm	207.93
33	(A) Painting with best quality synthetic enamel paint of approved make and brand including smoothening surface by sand papering etc. including using of approved putty etc. on the surface, if necessary : (a) On steel or other metal surface. (ii) Two coats (with any shade except white) PWD Building Works schedule, P-200, Item-2(b)(iv)	7.17	79.00	Sqm	566.43

SL.NO	Item Description & Item No.	Quantity	Rate	Unit	Amount
34	Supplying and laying chequered tiles of any shade and of approved quality with (1:1.5:3) cement concrete laid in panels or patterns as directed in pavement, footpath etc including necessary underlay 25 mm thick (avg) cement mortar (1:3) complete in all respect with all labour and materials. ( Using cement slurry @4.4kg/sq.m at back side and @2.4 kg/sq.m for joint filling ). PWD Building Works schedule, Page -74 , Item no- 46(i) . 25 mm thick <b>PWD Building Works schedule, P-74, It-46(i)</b>	4.00	471.00	sq.m	1884.00
35	Supplying, fitting & fixing 1st quality Ceramic tiles in walls and floors to match with the existing work & 4 nos. of key stones (10mm) fixed with araldite at the back of each tile & finishing the joints with white cement mixed with colouring oxide if required to match the colour of tiles including roughening of concrete surface, if necessary or by synthetic adhesive & grout materials etc (A) With Sand Cement Mortar (1:4) 20mm thick & 2mm thick cement slurry at back side of tiles using cement @ 2.91Kg/ Sq.m & joint tiling using white cement slurry @ 0.20kg/Sq.m. (i) Coloured decorative <b>PWD Building Works schedule, page-64, Item:35.(A.) (b).(i) (3rd Corrigendum, Page 36)</b>	19.11	920.00	Sqm	17581.20
	B) Wall Area of each tile above 6.09 Sq.m Other than Coloured decorative including white ii)	48.95	1047.00	Sqm	51250.65
36	Painting block letters or digits in Black Japan or any approved paint as per direction. e) Size above 7.5 cm. and upto 10 cm. <b>PWD Building Works schedule, P-268, I-17(e)</b>	450.00	12.00	Each	5400.00
37	Maintenance of trees for one year (Avenue Plants) including watering, trimming, manuring, spraying insecticide and guarding as required. This includes supply of labour, tools & plants including materials <b>PWD Building Works schedule, Page -260, It- 8</b>	6.00	477.00	Each Per Year	2862.00
38	Supplying and planting of different plants / trees (supplying well grown plants, bushy and healthy, minimum height as specified i.e. exposed height including all leads and lifts, carriage, handling, manuring applying pesticide and fertilizer etc. i) Furcaria Venegated 10 to 12 leaves in height 20-30 cm in earthen pot of size 25 cm <b>PWD Building Works schedule, Page -261, It- 9</b>	6.00	162.00	Each	972.00
	xi) Ficus Blekii (F. viviconi) well branched (bushy) of height 120cm - 135 cm in earthen pot of size 30cm.	3.00	187.00	Each	561.00
	xvii) Areca Palm 4 - 5 suckers of height 90 cm to 105 cm in earthen pots of size 25 cm.	3.00	127.00	Each	381.00
<b>SANITARY AND PLUMBING WORKS</b>					
39	Supplying, fitting and fixing Anglo-Indian W.C. in white glazed vitreous china ware of approved make complete in position with necessary bolts, nuts etc. a) With trap (with vent) <b>PWD S&amp;P Schedule, page-79, item no-3 (a)</b>	2.00	3104.00	Each	6208.00
40	Supplying, fitting and fixing Closet seat of approved make with lid and C.P. hinges, rubber buffer and brass screws complete. (b) Anglo Indian (i) Plastic (hollow type) white <b>PWD S&amp;P Schedule, page-81, item no 10.b.i</b>	2.00	380.00	Each	760.00
41	Supplying, fitting and fixing Flat back urinal (half stall urinal) in white vitreous china ware of approved make in position with brass screws on 75 mm X 75 mm X 75 mm wooden blocks complete (ii) 470 mm X 280 mm X 450 mm <b>PWD S&amp;P Schedule, page 80 item no-6/(ii)</b>	2.00	945.00	Each	1890.00

SL.NO	Item Description & item No.	Quantity	Rate	Unit	Amount
42	Supplying fitting and fixing squating plate with integrated flushing in white vitreous set in cement concrete (6:3:1) with jhama chips complete. ( Payment of concrete will be paid seperately ) (1) 450 mm x 350 mm PWD S&P Schedule, Page No.-80 Item No.-7	1.00	881.00	each	881.00
43	Supplying, fitting and fixing 10 litre P.V.C. low down cistern conforming to I.S. specification with P.V.C. fittings complete, C.I. brackets including two coats of painting to bracket etc. PWD S&P Schedule, Page No.-36 Item No.-2	2.00	1015.00	Nos	2030.00
44	Supplying, fitting and fixing 32 mm dia. Flush Pipe of approved make with necessary fixing materials and clamps complete. (i) Polythene Flush Pipe PWD S&P Schedule, Page no 81, Item no. 11(i)	2.00	155.00	Each	310.00
45	Supplying, fitting and fixing urinal flush pipe fittings of approved brand. (a) C.P. urinal flush pipe fittings range or one PWD S&P Schedule, S.P.81, item-12/a	2.00	414.00	Each	828.00
46	Supplying, fitting and fixing white vitreous china best quality approved make wash basin with C.I. bracket son 75mm X 75mm wooden blocks, C.P. waste fittings of 32mm dia., one approved quality brass C.P. pillar cock of 15mm dia., C.P. chain with rubber plug of 30mm dia., approved quality P.V.C. waste pipe with C.P. nut 32mm dia., 900mm long approved quality P.V.C. connection pipe with heavy brass C.P. nut including mending good oil (ii) 550 mm X 400 mm size PWD S&P Schedule, P-41, It 2 (ii)	2.00	2208.00	Each	4416.00
47	Supplying fitting and fixing pedestal of approved make for wash basin ( White ) PWD S&P Schedule, P-41, It 3	2.00	1497.00	Each	2994.00
48	Supplying, fitting and fixing approved brand P.V.C. CONNECTOR white flexible, with both ends coupling with heavy brass C.P. nut, 15 mm dia., (i) 600 mm long PWD S&P Schedule, Page No.-49 Item No.-9	6.00	107.00	Each	642.00
	(ii) 1050 mm long each.	4.00	91.00	Each	364.00
49	(B) Hand Shower (Health Faucet) with 1mtr Flexible Tube with Wall Hook (Equivalent to Code no. 573 & Model -ALUED of Jaquar or similar). PWD S&P Schedule, Page No.-3 Item No.- 3 f	2.00	1251.00	Each	2502.00
50	(a) (i) Chromium plated Bib Lock short body (Equivalent to Code No. 511 & Model -Tropical 7 Sanitising Special of ESSCO or similar brand). PWD S&P Schedule, Page No.-6 Item No.-7	3.00	539.00	Each	1617.00
	Chromium plated angular stop Cock with wall flange (Equivalent to Code No. 5053 & Model - Fiorentine of Jaquar or similar brand).	8.00	815.00	Each	6520.00

SL.NO	Item Description & Item No.	Quantity	Rate	Unit	Amount
51	Supplying, fitting and fixing PVC pipes of approved make of Schedule 80 (medium duty) conforming to ASTM D - 1785 and threaded to match with GI Pipes as per IS - 1239 (Part - I), with all necessary accessories, specials viz. socket, bend, tee, union, cross, elbo, nipple, long screw, reducing socket, reducing tee, short piece etc. fitted with holder bats clamps, including cutting pipes, making threads, fitting, fixing etc. complete in all respect including cost of all necessary fittings as required jointing materials and two coats of painting with approved paint in any position above ground. (Payment will be made on the centre line measurements of total pipe line including all specials. No separate payment will be made for accessories, specials. Payment for painting will be made separately) (a) For Exposed Work PVC Pipes, 25 mm Page No.-12 Item No.-19, PWD,VOL-II	15.00	177.00	Mtr	2655.00
	(a) For Exposed Work PVC Pipes, 15 mm	10.00	101.00	Mtr	1010.00
	(b) For Concealed Work PVC Pipes, 15 mm	10.00	137.00	Mtr	1370.00
52	Supplying and fitting fixing of gunmetal wheel valve of approved brand and make tested to 21 Kg per sq. cm. 25 mm dia(E5) PWD S&P Schedule, (P. 5 It. 5,vii)	2.00	778.00	Each	1556.00
53	Supplying P.V.C. water storage tank of approved quality with closed top with lid (black) - Multilayer (b) 1000 litre capacity PWD S&P Schedule, page.37, item no-6 (b)	1.00	5128.00	Each	5128.00
54	Supplying P.V.C. water storage tank of approved quality with closed top with lid (black) - Multilayer (c) 2000 litre capacity PWD S&P Schedule, page.37, item no-6 (c)	1.00	10434.00	Each	10434.00
55	Labour for fitting plastic water storage tank. (i) Upto 1000 litre capacity. (a) Upto 1st story from G.L. PWD S&P Schedule, page.37, item no-10 (i)(a)	2.00	96.00	Each	192.00
56	Labour for punching hole in plastic water storage tank upto 50 mm dia. PWD S&P Schedule, (P. No. - 38, Item. No. - 13	4.00	19.00	Each	76.00
57	Supply of UPVC pipes (B Type) & fittings conforming to IS-13592- 1992.(A) (i) Single Socketed 3 Meter Length, (b) 110 mm PWD S&P Schedule, Page No -68 Item No. 23,(A)(i)(b)	30.00	292.00	Mtr	8760.00
	(E) Fittings (i) Coupler, (b) 110 mm	8.00	85.00	Each	680.00
	(ii) Plain Tee, (b) 110 mm	4.00	85.00	Each	340.00
	(iii) Door Tee, (b) 110 mm	4.00	195.00	Each	780.00
	(x) Bend 45°, (b) 110 mm	4.00	89.00	Each	356.00
	(xi) Door Bend (T.S.), (b) 110 mm	3.00	147.00	Each	441.00
	(xvii) W.C. Connector (150 mm long) 125 X 110(W/WC Ring) 75 mm	4.00	142.00	Each	568.00
	(L) Nahadi Trap, 90 mm	2.00	105.00	Each	210.00
	(.) Rubber Ring, (b) 110 mm	15.00	17.00	Each	255.00
	(C) Rubber Lubricant 500 ML	1.00	187.00	500 ML	187.00
	(D) Solvent Cement 250 ML	1.00	103.00	250 ML	103.00
58	Labour for fitting and fixing U.P.V.C. pipes for above ground work including cost of jointing material etc. fitting and fixing all necessary specials, cutting pipes, cutting holes in total pipeline including specials. (B) Under ground, (ii) 110 mm dia PWD S&P Schedule, (P. - 74, Item. No. - 24 (B)	20.00	84.00	Mtr	1680.00

SL.NO	Item Description & Item No.	Quantity	Rate	Unit	Amount
59	Supplying, fitting & fixing UPVC pipes A- Type and fittings conforming to IS:13592-1992 with all necessary clamps nails, including making holes in walls, floor etc. cutting trenches in any soil through masonry concrete structures etc if necessary and mending good damages including joining with jointing materials (Spur, Yarn, Valamoid/Bitumen/M-Seal etc) complete. A) UPVC Pipes: (i) 75 mm. Dia. (P. - 212, Item. No. - 23 (A)(i), (B), (c), (f) & (9), (d) (f), Pwd volume- ii, 2017)	8.00	188.00	Mtr	1504.00
	B) UPVC Fittings: c) Bend 87.5 degree (i) 75 mm. Dia.	6.00	84.00	Mtr	504.00
	B) UPVC Fittings: d) Snee (i) 75 mm. Dia.	2.00	78.00	Mtr	156.00
60	Constructing inspection pit of inside measurement 600mm X 600mm X upto 600mm (depth) with 25 mm. thick 1st. class brick work in cement mortar (1:4) on all sides, bottom of the pit consisting of 100 mm thick cement concrete (1:3:6) with stone chips over a layer of jhama brick flat soling, 15 mm thick (1:4) cement plaster to inside walls and out-side walls upto G.L. and 20 mm thick (1:4) plaster to bottom of the pit, providing necessary layer with cement concrete (1:3:6) with stone chips as per direction, neat cement finishing to entire internal surfaces, top of the pit covered with 100 mm thick R.C.C. slab (1:1.5:3) with stone chips and necessary reinforcements upto 1% and shuttering including 6 mm thick cement plaster (1:4) in all external surfaces of the slab and one 560 mm dia. R.C.C. manhole cover of approved make supplied, fitted and fixed in the slab with necessary fittings, necessary earthwork in excavation in all sorts of soil, filling sides of the pit with earth and removing spoils after work complete in all respect with all costs of labour and materials. i) With Pakur variety (Other than SAIL/TATA/RINL). PWD S&P Schedule, S.P.87, item No-17(i), 7th Corrigena Volume ii	2.00	7248.00	Each	14496.00
61	Construction of septic tank of different capacities as per approved drawing with 1st class brick work in cement mortar (1:4) including two 560 mm dia. R.C.C. manhole cover (heavy type) of approved make supplied, fitted and fixed in the 100mm thick R.C.C. (1:1.5:3) top slab with necessary fittings, 20mm thick cement plaster (4:1) with neat cement finish to the internal surfaces and 15 mm thick cement plaster (4:1) to outside wall upto 200 mm below G.L. floor finished with 25 mm thick grey artificial stone over 100 mm thick R.C.C. (1:1.5:3) bottom slab including supplying, fitting and fixing all necessary specials, fittings, S.W. tees, C.I. foot rest etc. including excavation earth in all sorts of soil, shoring, bailing out and pumping out water as necessary, ramming, dressing the bed and refilling the sides of the tanks with earth, removing spoils, filling up the chamber with clear water, removing foreign materials from the chamber and including constructing attached inspection pit as per approved drawing and connecting all necessary pipes, joints etc. with internal plaster work and artificial stone flooring is to be done with admixture of water proofing compound @ 0.5% by weight of cement with all costs of labour and materials (ii) For 20 users. A) With Pakur variety, BSW/JSP/SHYAM/SRMB/ELECTROSTEEL/SSL) PWD S&P Schedule, S.P. 88, item No-2(ii)(A) 7th Corrigena Volume ii	1.00	48162.00	Each	48162.00

SL.NO	Item Description & Item No.	Quantity	Rate	Unit	Amount
62	Construction of circular soak well 2.5 metre deep in all types of sandy soils with dry brick work upto 1.6 metre from the bottom having 150 mm intermediate cement brick work (1:4) band all round and cement brick work (1:4) upto 0.90 metre from top with 20mm thick cement plastering (1:4) to inside face upto the depth of cement brick work, 15mm thick cement plaster (1:4) on outer face from top of the well upto G.L. and 6 mm thick cement plaster (1:4) on top of the R.C.C. cover slab including filling bottom 1.00 metre of inside of the well with brick metal (50 mm to 53 mm size) including R.C.C. cover slab of 100 mm thick with cement conc (1:1.5:3) with stone chips with necessary reinforcement and shuttering including one 560 mm dia. R.C.C. manhole cover (heavy type) of approved make supplied, fitted and fixed in the cover slab with necessary fittings, making necessary arrangements for pipe connections, excavation of well including shoring, dewatering and removing the excess earth from the premises as per direction complete in all respect with all costs of labour and materials. With 250 mm thick dry brick work and 250 mm thick cement brick work (1:6) and 1.00m inside dia. (Other than SAIL/TATA/MINL) PWD S&P Schedule, P-89, Item No-4 7th Corrigenda Volume II	1.00	16621.00	Each	16621.00
63	Supplying, fitting and fixing towel rail with two brackets. (a) C.P. over brass (ii) 25 mm dia. and 500 mm long PWD S&P Schedule, P-82, It-15(ii)	2.00	430.00	Each	860.00
64	Supplying, fitting and fixing bevelled edged mirror 5.5 mm thick silver red as per I.S. 3428 / 1965 together with brass C.P. hinges. (ii) 600 mm X 450 mm PWD S&P Schedule, P-81, It-15(ii)	2.00	484.00	Each	968.00
65	Supplying, fitting and fixing soap holder. (a) Flute glass PWD S&P Schedule, P-82, It-16(a)	2.00	58.00	Each	406.00
66	Supplying, fitting and fixing glass shelf with aluminium guard rails. (a) Ordinary type with 3.5 mm sheet glass (i) 450 mm x 125 mm PWD S&P Schedule, P-81, It-16(a)(i)	2.00	341.00	Each	682.00
<b>Total</b>					<b>571051.30</b>
<b>Add S.G.S.T. @</b>			<b>0%</b>		<b>51394.62</b>
<b>Add C.G.S.T. @</b>			<b>9% 18%</b>		<b>51394.62</b>
<b>Cost Of Civil Work</b>					<b>673840.54</b>
<b>Add Labour Welfare Cess. @</b>			<b>1%</b>		<b>6738.41</b>
<b>Total Amount Including L. Welfare Cess.</b>					<b>680578.94</b>
<b>Add Contingency @3%</b>					<b>20417.37</b>
<b>Total Amount Including L.W.C. and contingency</b>					<b>700996.31</b>
<b>Say Rs.</b>					<b>700996.00</b>

In Word ( Say ) : Rupees Seven Lakh Nine Hundred Ninty Six only

Six Seventy Two Thousand Four Hundred Ninty Five only

*[Signature]*  
22/05/25  
Junior Engineer (Civil)  
Nadia Division, M.E. Dte.  
Deptt. of UD & MA  
Govt. of West Bengal

*[Signature]*  
17/5/25  
Sub-Assistant Engineer  
Chakdaha Municipality  
Chakdaha, Nadia.

*[Signature]*  
13/05/25  
Assistant Engineer (Civil)  
Executive Officer  
Chakdaha Municipality  
Chakdaha, Nadia.

*[Signature]*  
Chairman  
Chakdaha Municipality  
Chakdaha, Nadia.

*[Signature]*  
Vetted  
Executive Engineer  
Nadia Division M. E. Dte.  
Deptt. of UD & MA  
Govt. Of West Bengal

**Non Schedule Items that may required in preparation of CT/PT estimates**

S.L.NO	Description of Items	Unit	Quantity	Rate
1	Standard plastic Dustbin ( 12 lits )	Each	1	350
2	Installation of Sinage	Each	1	2071
3	Air Freshner ( Pack of 4 nos )	Each	1	216
4	Air Freshner ( Napthaline 250 gm )	Each	1	210
5	Supplying paper Napkin	Each	1	50
6	Supplying Sanitary Napkin (Whisper or similar make 50 pcs )	Each	1	520
7	Harpic ( Blue 500 ml)	Each	1	300
8	Harpic ( Red 500 ml)	Each	1	150
9	Gala double lip floor wiper	Each	1	350
10	Colin glass or surface cleaner	Lit	1	200
11	Muriatic Acid	Lit	1	145
12	Bleaching Powder	kg	1	120
13	Dettol, Lifebuoy or similar make liquid soap	Lit	1	140
14	Rubber hand Gloves	pair	1	80
15	Double Side plastic brush	each	1	125
16	Plastic Broom	each	1	170
17	Signage ACP Base & reflective vinyl (E8)	each	1	3776.00
18	SMS/any other ICT based feedback system (with number displayed on which SMS has to be sent) (A9)	each	1	5000.00
19	Glow sign board Name and contact details of the following are displayed prominently - Toilet identification number, name of ULB under whose jurisdiction toilet is covered, ward number and maintenance authority prominently displayed for each toilet block Supervisor, Supervisor's agency and area Sanitary Inspector (D3)	each	1	5000.00
20	Mini Tulu pump ✓	Each	1	4000
21	Supplying and fixing sinage with fixing stand post for public toilet for visible to passersby	each	1	1000
22	Supplying roaster/register for keeping account of regular cleaning (D1)	each	1	200
23	Lettering on toilet wall for display of name and contact details of ULB, Ward number and name of maintenance authority, sanitary inspector, etc ( D3)	EACH	1	1000

*05/08/2022*  
E F SUDA.

*02/06/25*  
Chardeha Municipality  
Chardeha, Naha

*02.06.25*  
Chardeha Municipality  
Chardeha, Naha

**Estimate for Construction of Non Schedule work of Public Toilet at Purbachal KBM, Sakuntala in Ward 20 under Chakdaha Municipality**

Rate As per SUDA-924/2021/7746 Date- 05.03.2022

Sl No	Description of Items	unit	Quantity	Rate	Amount
1	Standard plastic Dustbin (12 lt)	Each	2	350.00	700.00
2	Installation Singe	Each	3	2071.00	6213.00
3	Air Freshner (pack of 4 nos)	Each	4	216.00	864.00
4	Air Freshner (naphthalin 250gm)	Each	4	210.00	840.00
5	Suppling paper napkin	Each	4	50.00	200.00
6	Suppling Sanitary Napkin (Whisper or similar make 50pcs)	Each	2	520.00	1040.00
7	Harpic (Blue 500ml)	Each	2	300.00	600.00
8	Harpic ( Red 500ml)	Each	2	150.00	300.00
9	Gala double lip floor wiper	Each	2	350.00	700.00
10	Colin glaswas or surface cleaner	Lit	1	200.00	200.00
11	Muratic Acid	Lit	2	145.00	290.00
12	Bleaching Powder	Kg	2	145.00	290.00
13	Dettol, Lifeboy or similar make liquid soap	Lit	2	140.00	280.00
14	Rubber hands Gloves	Pair	2	80.00	160.00
15	Double side plastic brush	Each	2	125.00	250.00
16	Plastic Broom	Each	1	170.00	170.00
17	Sinage ACP Base & reflective vinyl	Each	1	3776.00	3776.00
18	SMS/ any other ICT based feedback system( with number displayed on which SMS has to sent	Each	1	5000.00	5000.00
19	Glow sign board Name & contact of the following are dispalyed- Toilet identification number, name of the ULB under whosw jurisdiction toilet block Supervisor agency and area Sanitary Inspector	Each	1	5000.00	5000.00
21	Supplying and fixing sinage with fixing stand post for public toilet for visible to passersby	Each	3	1000.00	3000.00
22	Supplying roaster / registrar for keeping account of regular cleaning	Each	2	200.00	400.00
23	Lettering on toilet wall for display of name and contact details of ULB, Ward number and name of maintance, sanitary inspector etc	Each	1	1000.00	1000.00
<b>Total</b>					<b>31273.00</b>
<b>Labour Cess 1%</b>					<b>347.88</b>
<b>Contegency 3%</b>					<b>938.19</b>
<b>Total</b>					<b>32559.07</b>
<b>Say Rs.</b>					<b>32559.00</b>

In Word ( Say ) : Thirty Two Thousand Five Hundred Fifty Nine only

*(Signature)*  
22/05/25  
Junior Engineer (Civil)  
Nadia Division, M.E. Deptt. of UD & MA  
Govt. of West Bengal

*(Signature)*  
17/5/25  
Sub-Assistant Engineer  
Chakdaha Municipality  
Govt. of West Bengal

*(Signature)*  
17/05/25  
Executive Officer  
Chakdaha Municipality  
Chakdaha, Nadia.

*(Signature)*  
Chairman  
Chakdaha Municipality  
Chakdaha, Nadia.

Electrical estimate for construction of Public Toilet at Purbachal KBM, Sakuntala in Ward 20 under Chakdaha Municipality  
Model- F (Toilet Seat - 2, Nos and Urinal - 3 Nos)

\* As per PWD & I & WD schedule district charges will be applicable on PWD & I & WD schedule items

\* No district charges will be applicable on non-schedule items

SI No.	Item Description	Unit	Quantity(a)	Rate(b)	Rate 3% incl. District Charge <del>c=(axb)x3%</del>	Amount (axb)+c
1	Distribution wiring in 2 x 22/0.3 (1.5 sqmm) single core stranded 'FR' PVC insulated & unsheathed copper wire (Brand approved by EIC) in 20mm size PVC rigid conduit 'FR' (Precision make), with 1x22/0.3 (1.5 sqmm) single core stranded 'FR' PVC insulated & unsheathed copper wire for ECC, to light/fan/call bell points with Piano Key type switch fixed on MS CRC sheet metal (16 SWG) switch board cum JB on wall complete with 2 no. suitable size "Ph & N" copper bar incl. bakelite/Perspex (wall matching color) top cover 3 mm thick and incl. 175mmx100mmx65mm inspection box, making earthing attachment, painting the MS box and mending good the damages to original finish. Average run 5 Mtr. [PWD Schedule Page No-E-14 Item No-2a]	Points.	12	612.00	<del>220.32</del> 630.36	7564.32
2	Distribution wiring in 1.1 KV grade 22/0.3 (1.5 sqmm) single core stranded 'FR' PVC insulated & unsheathed copper wire (Brand approved by EIC) in 20mm size PVC rigid conduit 'FR' (Precision make), with 1.1 KV grade 1 x 22/0.3 (1.5 sqmm) single core stranded 'FR' PVC insulated & unsheathed copper wire as ECC, to 5A 3 pin flush type plug socket & Piano Key type switch fixed on MS CRC sheet metal (16 SWG) switch board cum JB on wall incl. bakelite/Perspex (wall matching color) top cover 3 mm thick and incl. painting the MS box and mending good the damages to original finish On Board (only for pay counter) [PWD Schedule Page No-E-15; I-4a]	Point.	2	67.00	<del>2.01</del> 69.01	138.02 69.01
3	Supplying and fixing 240V 32A Double Pole AC Type 30mA RCCB.(Complete Set) (ISI marked) [Make-Legrand] (Cat No 4113/95) [Legrand Page No-92]	No.	1	5942.00	0.00	5942.00
4	Distribution wiring in 1.1 KV single core stranded 'FR' PVC insulated & unsheathed copper wire (Brand approved by EIC) in 20mm size PVC rigid conduit 'FR' (Precision make) incl. necy. fittings as required 2 x 36/0.3 (2.5 sqmm) + 1 x 22/0.3 (1.5 sqmm) ECC [PWD Schedule Page No-E-14 Item No-1a(ii)]	Mtr.	10	119.00	<del>35.70</del> 122.57	1225.70
5	Supplying and fixing double-door SPN MCB Distribution Board with IP-42/43 protection, concealed in wall after cutting the wall & mending good the damages to original finish incl. Inter connection with suitable size of copper wire and neutral link & provision for earthing attachment. a) For (2+4 way) (Make -Havells) [PWD Schedule Page No-D-9;Item No-13]	No.	1	935.00	<del>28.05</del> 963.05	963.05

No.	Item Description	Unit	Quantity(a)	Rate(b)	Rate 3% incl. District Charge $c=(axb) \times 3\%$	Amount (axb)+c
6	Supplying and fixing 240/415 V MCB of Breaking capacity 10kA & C characteristics on din rail of existing DBs and necessary connection 6-32A SP MCB (Make - Havells) [PWD Schedule Page No-D-6;Item No-7]	Nos.	4	168.00	<del>20.16</del> 173.04	<del>692.16</del>
7	Supplying and fixing 240/415 V MCB Isolator on din rail of existing DBs and necessary connection. 40A DP MCB Isolator (Make -Havells) [PWD Schedule Page No-D-5;Item No-6]	No.	1	208.00	<del>6.24</del> 214.24	<del>214.24</del>
8	Supply of TMC501 conventional industrial batten (Philips make) LED Tube,model no- TMC501 P1xT-LED 22W P3241 (WB I & WD schedule P-113, I- 5:3 F.22)	Nos.	3	451.00	<del>40.59</del> 455.51	<del>1393.59</del> 1366.53
9	Fixing only single/twin fluroscent light fitting complete with all accessories directly on wall/ceiling by screws etc.. [PWD Schedule Page No-C-2; Item No-14a]	Nos.	3	86.00	<del>7.74</del> 88.58	<del>265.74</del>
10	Supply & fixing Bulk head light fittings with die cast aluminium housing frosted/clear glass on wall/ceiling incl S/F 9 watt LED Lamp complete set. [Make - Havells] (PWD sch - Page--D-13, I-23)	Nos.	3	<del>644.00</del>	<del>57.96</del> 671.37	<del>1989.96</del> 2014.11
11	Supply & fixing smart bright street light complete with all accessories to be fixed from the wall of building or on pole incl. making holes /providing clamping arrangement & necy. GI reducer as required.S&F 40 mm GI Pipe 1.5 mtr average length & s&f necy length of 1.5 sqmm pvc insulated single core copper wire & making connections as required & mending good damages incl wall paingting. (30 Watt) (Make - Bajaj) [WB I&WD sch P-111, I-f.9.0.2]	No.	1	3016.00	<del>90.48</del> 3046.16	<del>3106.48</del> 3046.16
12	Supply of 9" domestic metal exhaust fan 9" (225mm)SWEEP. TRANS AIR - ( Make-Crompton/Havells/Bajaj) (UD & MA schedule P-14, I-5))	Nos.	3	1863.00	0.00	<del>5589.00</del>
13	Fixing only exhaust fan after making hole in wall and making good damages and smooth cement finish etc. as practicable as possible and providing necy. length of PVC insulated wire and making connection for exhaust of following diameter: 22.5 cm ( 9" ) [PWD Schedule Page No-C-4;Item No-28(b)]	Nos.	3	247.00	<del>22.23</del> 254.41	<del>763.23</del>
14	Fixing only louver shutter/cowl on wall with necy. bolts & nuts (6 mm dia x 62 mm long) For 22.5 cm(9") Exhaust fan [PWD Schedule Page No-C-4;Item No-30(b)]	Nos.	3	82.00	<del>7.38</del> 84.46	<del>253.38</del>
15	Supply of 240V A.C Ceiling Fan ( 48" sweep,1200 mm complete) Make-Crompton [ for counter only] (UD & MA schedule P- 23, I- 70)	Each.	1	2283.00	<del>68.49</del>	<del>2283.00</del> 2351.49
16	Fixing only Ceiling Fan. [PWD sch P- C-3, I-21(a)]	Each.	1	66.00	<del>1.98</del> 67.98	<del>67.98</del>

No.	Item Description	Unit	Quantity(a)	Rate(b)	Rate 3% incl. District Charge $c=(axb) \times 3\%$	Amount (axb)+c
17	Supply & Fixing 240 V, 16/20 A Piano key type switch (Brand approved by EIC) on sheet metal switch board incl. S & F 100x100x65mm MS (16SWG) switch board and bakelite/perspex top cover of 3mm thick by Brass screws after making housing for switch by cutting bakelite/perspex cover and making necessary connections as required. (For Hand Dryer machine) [PWD sch P- E-6, I-17(b)]	Each.	2	201.00	207.03	414.06
18	S/F 240V 25A Modular type starter (brand approved by EIC) with 25 A. Modular switch DP MCB (C-Curve) and 4 Module G.I. Modular type switch board with 4 Module Top Cover Plate flushed in wall incl. S/F switch board and Cover Plate and making necy. Connections with PVC Copper wire and earth connectivity wire etc. as per schedule [for Pump] [PWD Schedule Page No-E-19, Item No-17] (Please follow in details)	No.	1	784.00	807.52	807.52
19	Supply and Fixing of 2 mm Polyvinyl glow sign board made of 22 SWG GI sheet box with 1"X1" aluminum channel for fixing the vinyl board after necessary cutting the letter as required & s/f LED tube light fittings along with all accessories. (16 sqft @495.00/sqft) (UD & MA schedule P-14, I-4)	No.	1	7920.00	0.00	7920.00
20	Mini Tulu Pump	No.	1.00	4000.00	0.00	4000.00
21	Earthing installation by GI earth Spike (1830 X 20 mm) including 8SWG GI EarthWire & GI nuts, bolts, washer	No.	1	450.00	0.00	450.00
Total					45980.20	45835.88
Add 18% GST					8276.43	8250.46
Total With GST (A)					54256.63	54086.34
Cess@1%					542.56	540.8634
Total					54799.20	54627.20
Contingency@3%					1627.69	1638.82
* AS per WBSEDCL- Service Connection Charges (25Mtr. Length Consider)						4000.00
Quotation Total					56426.89	60266.02
Say Rs.					56427.00	60266.00

In Word ( Say ) : ~~Sixty Thousand Two Hundred Sixty Six only~~

  
20/05/25  
Sub-Assistant Engineer  
Chakdaha Municipality  
Sub Assistant Engineer  
(Electrical)  
Chakdaha Municipality  
Chakdaha, Nadia.

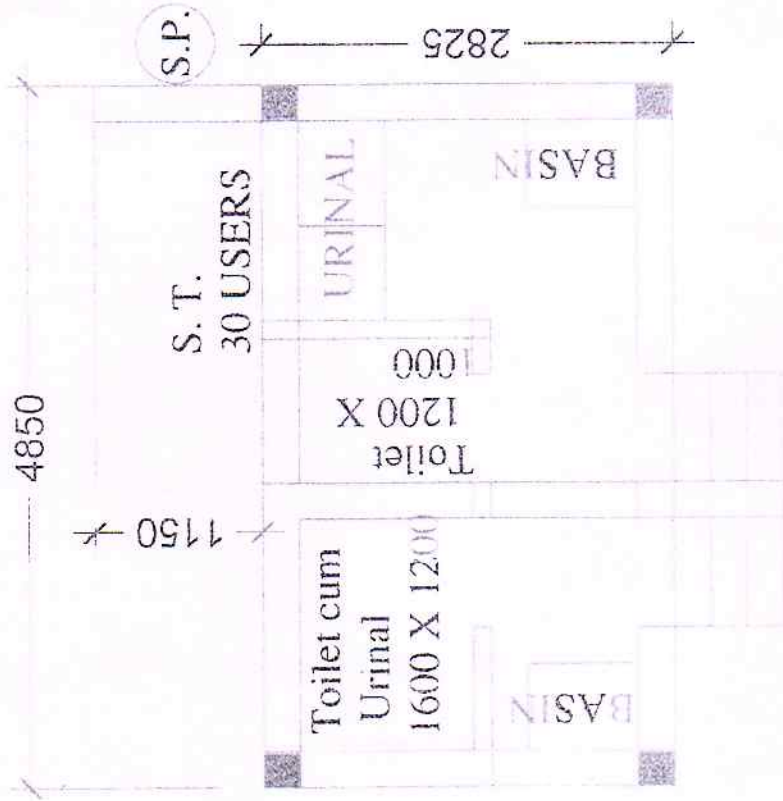
  
20/5/25  
Executive Officer  
Chakdaha Municipality  
Executive Officer  
Chakdaha Municipality  
Chakdaha, Nadia

  
Chairman  
Chakdaha Municipality  
Chairman  
Chakdaha Municipality  
Chakdaha, Nadia

Say Rs. 56,427.00

P.T.O

MODEL DRAWING FOR CONSTRUCTION OF C. T. / P. T.  
 TOILET SEATS 2 NOS URINAL 3 NOS  
 MODEL NO. - F



- \* Bulk Head Light → 3 Nos. ✓
- \* Tube Light → 3 Nos. ✓
- \* Exhaust Fan → 3 Nos. ✓
- \* outdoor Light → 1 NO. ✓
- \* Ceiling Fan → 1 NO. ✓
- \* Galvo Sign Board → 1 NO. ✓

12 pts

Sub Assistant Engineer  
 (Electrical)  
 Chakdaha Municipality  
 Chakdaha, Nadia.

Executive Officer  
 Chakdaha Municipality  
 Chakdaha, Nadia.

04/06/25