

CONSTRUCTION OF PUBLIC TOILET (PT) AT TOWN CLUB, WARD NO-7

CIVIL WORKS

TOILET SEATS 4 NOS URINAL 5 NOS

MODEL-G

SL.NO	Item Description & Item No.	Unit	NOS	L	B	H	QTY	Rate	Ammount
1	Earth work in excavation of foundation trenches or drains, in all sorts of soil (including mixed soil but excluding laterite or sandstone) including removing, spreading or stacking the spoils within a lead of 75 m. as directed. The item includes necessary trimming the sides of trenches, levelling, dressing and ramming the bottom, bailing out water as required complete. (a) Depth of excavation not exceeding 1,500 mm. PWD Building Works schedule Page - 1, Item -2.a								
		% Cu.m	6	1.2	1.2	1.13	9.763		
		% Cu.m	3	4.05	0.25	0.25	0.759		
		% Cu.m	2	1.85	0.25	0.25	0.231		
		% Cu.m	2	2.5	0.25	0.25	0.313		
		% Cu.m	1	2.25	0.75	0.18	0.304		
		% Cu.m					11.370	11927.00	1356.10
2	Earth work in filling in foundation trenches or plinth with good earth, in layers not exceeding 150 mm. including watering and ramming etc. layer by layer complete. (Payment to be made on the basis of measurement of finished quantity of work). (a) With earth obtained from excavation of foundation. PWD Building Works schedule, Page - 1, Item -3.a								
	2/3 OF THE ITEM 1	% Cu.m	0.667	11.370			7.580	7754.00	587.75
3	(A) Filling in foundation or plinth by silver sand in layers not exceeding 150 mm as directed and consolidating the same by thorough saturation with water, ramming complete including the cost of supply of sand. (payment to be made on measurement of finished quantity)								
		% Cu.m	2	1.6	1.2	0.6	2.304		
		% Cu.m	2	1	1.2	0.6	1.440		
		% Cu.m	1	2.73	2.13	0.6	3.489		
		% Cu.m	1	1.73	0.53	0.6	0.550		
		% Cu.m	1	1.85	1	0.6	1.110		
		% Cu.m					8.893	52107.00	4633.88
4	Single Brick Flat Soling of picked jhama bricks including ramming and dressing bed to proper level and filling joints with local sand. PWD Building Works schedule, Page- 14, Item - 1 (Corri. Page-01, Date-04-06-2018)	Sqm							
		Sqm	6	1.2	1.2		8.640		
		Sqm	1	2.25	0.75		1.688		
		Sqm	1	5.1	4.55		23.205		
		Sqm					33.533	324.00	10864.69
5	Cement concrete with 30 mm down graded shingles excluding shuttering. With N. B. Varity (a)1:3:6 proportion. PWD Building Works schedule, Page -34, Item -22(ii), (Corri. Page- 09, Date-04-06-2018) Rate Analysis1 (Corri. Page-01, Date-04-06-2018)								
		Cum	6	1.2	1.2	0.1	0.864		
		Cum	1	2.25	0.75	0.1	0.169		
		Cum	1	5.1	4.55	0.1	2.321		
		Cum					3.354	3260.93	10937.16

6	Ordinary Cement concrete (mix 1:1.5:3) with graded stone chips (20 mm nominal size) excluding shuttering and reinforcement, if any, in ground floor as per relevant IS codes. a) Pakur Variety /Chandil Variety PWD Building Works schedule, p-26 Item 10 a (Rate Analysis)								
		Cum	6	1.2	1.2	0.2	1.728		
	$(1.2 \times 1.2) + (0.4 \times 0.4) / 2 = 0.80$	Cum	6	0.8		0.2	0.960		
		Cum	6	0.4	0.4	0.3	0.288		
		Cum	3	4.55	0.25	0.25	0.853		
		Cum	1	1.2	0.25	0.25	0.075		
		Cum	1	1.6	0.25	0.25	0.100		
		Cum	2	1.85	0.25	0.25	0.231		
		Cum	1	1.20	0.25	0.25	0.075		
		Cum	2	2.50	0.25	0.25	0.313		
		Cum	1	1.85	0.25	0.25	0.116		
		Cum	1	2.5	0.25	0.25	0.156		
		Cum	6	0.25	0.25	3.35	1.256		
		Cum	2	1.85	0.25	0.2	0.185		
		Cum	2	2.50	0.25	0.2	0.250		
		Cum	3	4.05	0.25	0.2	0.608		
		Cum	1	1.85	0.13	0.2	0.048		
		Cum	2	1.2	0.13	0.2	0.062		
		Cum	1	2.5	0.13	0.2	0.065		
		Cum	1	1.6	0.13	0.2	0.042		
		Cum	4	0.5	0.45	0.1	0.090		
		Cum	2	1.85	0.25	0.13	0.120		
		Cum	2	2.5	0.25	0.13	0.163		
		Cum	3	4.55	0.25	0.13	0.444		
		Cum	1	5.1	4.55	0.13	3.017		
							11.245	6101.55	68611.93
7	25mm. thick damp proof course with cement concrete with stone chips (1:1.5:3) [with graded stone aggregate 10 mm nominal size] and admixture of water proofing compound as per manufacturer's specification followed by two coat of polymer based paint, (1st coat after 4 to 5 days of concrete laying and 2 nd coat just before brick masonry work) as directed (cost of water proofing compound & polymer based paint to be paid separately). (Chequering not required over concrete or painted surface). [Note: - Waterproofing as per item 9, polymer based paint as per item 8 (a) of subhead C of Section (C). PWD Building Works schedule, Page -47, Item -1 (Rate Analysis)								
		Sqm	2	1.85	0.25		0.925		
		Sqm	2	2.5	0.25		1.250		
		Sqm	3	4.05	0.25		3.038		
		Sqm	1	1.85	0.13		0.241		
		Sqm	2	1.2	0.13		0.312		
		Sqm	1	2.5	0.13		0.325		
		Sqm	1	1.6	0.13		0.208	318.33	2005.16
		Sqm					6.299	244.47	1350.92
8	125 mm brick work with 1st class bricks in cement mortar (1:4) in ground floor. PWD Building Works schedule, Page -16, Item-16, cori page -3, date -04.06.2018 (Rate Analysis)								
	Partition wall (3-125-2 = 2.68)	Sq.M.	1	1.6		2.68	4.288		
		Sq.M.	2	1.2		2.68	6.432		
		Sq.M.	1	2.5		2.68	6.700		
		Sq.M.	1	18.8		0.3	5.640		
	Less for opening Door	Sq.M.	3	0.75	2.1		-4.725		
							18.335	666.25	12215.69

9	Supplying and laying polythine sheet (150 gm/sq.m) over dampproof course or below flooring or roof terracing or foundation or foundation trenches. PWD Building Works schedule, Page -47, Item-3								
		Sq.M.	1	5.1	4.55		23.205	24.00	556.92
10	Hire and labour charges for shuttering with centering and necessary staging upto 4 m using approved stout props and thick hard wood planks of approved thickness with required bracing for concrete slabs, beams and columns, lintels curved or straight including fitting, fixing and striking out after completion of works (upto roof of ground floor) (f) 25 mm to 30 mm shuttering without staging in foundation PWD Building Works schedule, Page -42, Item- 36.f								
	Footing	Sqm	6	4	1.2	0.3	8.640		
	Col	Sqm	6	4	0.4	0.3	2.880		
	Col (GL to PL)	Sqm	6	4	0.25	0.6	3.600		
	Tie beam	Sqm	2	2	1.85	0.25	1.850		
	Tie beam	Sqm	3	2	2.5	0.25	3.750		
			3	2	4.55	0.25	6.825		
	Part Beam	Sqm	1	2	1.85	0.25	0.925		
	Part Beam	Sqm	2	2	1.2	0.25	1.200		
	Part Beam	Sqm	1	2	2.5	0.25	1.250		
			1	2	1.6	0.25	0.800		
							31.720	205.00	6502.60
11	Hire and labour charges for shuttering with centering and necessary staging upto 4 m using approved stout props and thick hard wood planks of approved thickness with required bracing for concrete slabs, beams and columns, lintels curved or straight including fitting, fixing and striking out after completion of works (upto roof of ground floor) (a) 25 mm to 30 mm thick wooden shuttering as per decision & direction of Engineer-In-Charge. PWD Building Works schedule, Page -42, Item- 36.a	Sqm							
	Column	Sqm	6	4	0.25	2.75	16.500		
	Lintel	Sqm	3	2	4.05	0.2	4.860		
	Lintel	Sqm	2	2	1.85	0.2	1.480		
		Sqm	2	2	2.5	0.2	2.000		
	Partition Wall	Sqm	1	2	1.85	0.2	0.740		
		Sqm	1	2	2.5	0.2	1.000		
		Sqm	2	2	1.2	0.2	0.960		
		Sqm	1	2	1.6	0.2	0.640		
	Opening	Sqm							
	Window	Sqm	4	1	0.45	0.25	0.450		
	Door	Sqm	2	1	1.05	0.25	0.525		
		Sqm	3	1	0.75	0.13	0.293		
	Chajja	Sqm	4	1	0.5	0.45	0.900		
		Sqm	4	1	1.4	0.1	0.560		
	Roof Beam	Sqm	4	1	4.55	0.13	2.366		
		Sqm	2	1	1.85	0.13	0.481		
		Sqm	2	1	2.5	0.13	0.650		
	Outer Side	Sqm	1	1	19.3	0.25	4.825		
	Roof Slab	Sqm	1	1	7.37	3.5	25.795		
							65.025	328.00	21328.20

19	Plaster (to wall, floor, ceiling etc.) with sand and cement mortar including rounding off or chamfering corners as directed and raking out joints including throating, nosing and drip course, scaffolding/staging where necessary (Ground floor).[Excluding cost of chipping over concrete surface] (ii) With 1:4 cement mortar (c) 10 mm thick plaster PWD Building Works schedule, P-189 It- No. 1 (ii)(c) (Rate Analysis)								
	Chajja	Sqm	4	0.45	0.5		0.9		
		Sqm	1	4.6	4.05		18.63	123.98	2411.56
		Sqm					19.53	123.46	2411.17
20	Neat cement punning about 1.5 mm thick in wall ,dado, window sills, floors etc . Note cement 0.152 m3/100 m2	Sq.m	1	19.3		0.6	11.58	32.71	378.78
21	Supplying, fitting and fixing fibre reinforced polymer (FRP) Composite door frame as per approved section with glass fibre reinforced plastic moulded skins and a special sandwich core, so as to impart monolitaheic composite structure as per approved technology of Department of Science and Technology (DST) to safisfy IS: 4020 door testing performance criteria.. (i) 66mm x 90mm PWD Building Works schedule, P-115, It - 3 (i)	Mtr	4	4.95			19.800	497.00	9840.60
22	Supplying, fitting & fixing fibre reinforced polymer (FRP) Composite door shutters as per approved design with glass fibre reinforced plastic moulded skins and a special sandwich core, so as to impart monolitaheic composite structure as per approved technology of Department of Science and Technology (DST) to satisfy IS:4020 door testing performance	Sqm	4	0.62		2.03	5.034	2581.00	12992.75
23	Anodised aluminium barrel / tower / socket bolt (full covered) of approved manufactured from extruded section conforming to I.S. 204/74 fitted and fixed with cadmium plated screws . (vii) 225mm long x 10mm dia. bolt. PWD Building Works schedule, P-144, It No. 26 (vii)	Each	5				5.000	84.00	420.00
24	Iron butt hinges of approved quality fitted and fixed with steel screws, with ISI mark. (viii) 100mm X 75mm X 3.50mm. PWD Building Works schedule, P-140, It No. -5 (viii)	Each	15				15.000	66.00	990.00
25	Anodised aluminium decorative handle (hexagonal / fluted) of approed quality fitted and fixed complete. (i) 150mm plate x 10mm dia rod x 12mm hexagonal/fluted. PWD Building Works schedule, Page -146, Item no-	Each	10				10.000	87.00	870.00
26	Iron hasp bolt of approved quality fitted and fixed complete (oxidised) with 16mm dia rod with concrete bolt and round fitting. b) 250mm long. PWD Building Works schedule, Page -141 . Item no-10 b)	Each	5				5.000	159.00	795.00
27	Supplying and laying chequered tiles of any shede and of approved quality with (1:1.5:3) cement concrete laied in pannels or patterns as directed in pavement ,footpath etc including necessary underlay 25 mm thick (avg)cement mortar (1:3) complete in all respect with all labour and materials .(Using cement slurry @4.4kg/sq.m at back side and @2.4 kg/sq.m for joint filling). PWD Building Works schedule, Page -74 , Item no- 46(i) . 25 mm thick								
		sq.m	4	2.25	0.15		1.350		
		sq.m	3	2.25	0.25		1.688		
		sq.m	2	0.25	0.15		0.075		
		sq.m	2	0.5	0.15		0.150		
		sq.m	2	0.75	0.15		0.225		
							3.488	467.00	1628.90

28	Rendering the Surface of walls and ceiling with White Cement base WATER PROOF wall putty of approved make & brand.(1.5 mm thick) In Ground Floor PWD Building Works schedule, PWD, P- 198, I - 5								
	Same as Item no18+19-20=(115.336+19.53-11.58)	Sqm					123.286	122.00	15040.89
29	Applying interior grade Acrylic Primer of approved quality and brand on plastered and concrete surface old or new surface to receive Distemper Acrylic emulsion paint including scraping and preparing the surface thoroughly , complete as per manufacturer's specification and as per direction of the E-I-C (Ground Floor) (b) Two Coats 195 PWD Building Works schedule, Page -74, Item no-46(7 b i)	m2					0.000	44.20	0.00
	Inside	%Sqm	4	4.05		0.78	12.636		
		%Sqm	2	1.85		0.78	2.886		
			2	2.5		0.78	3.900		
		%Sqm	2	1.85		0.78	2.886		
			4	1.2		0.78	3.744		
		%Sqm	2	2.5		0.78	3.900		
			2	1.6		0.78	2.496		
		%Sqm	1	4.6		4.05	18.630	4420.00	2257.65
		%Sqm					51.078	4422.00	2258.67
30	Dry Destempering interial walls or ceiling including cleaning, washing, smoothening surface (b) two coats PWD Building Works schedule, Page -196 , Item no-9(b)								
	Same quantity as above	m2					51.078	49.00	2502.82
31	Applying exterior grade Acrylic Primer of approved quality and brand on plastered or concrete surface old or new surface to receive Decorative Textured (Martt Finish) or Smooth Finish Acrylic exterior emulsion paint including scraping and preparing the surface thoroughly , complete as per manufacturer's specification and as per direction of the EIC in Ground Floor (b) two coats. PWD Building Works schedule, Page -196 , Item no-8(b)								
	Outer Side	m2	2	5.1		3.6	36.720		
		m2	2	4.55		3.6	32.760		
	Chajja	m2	8	0.45		0.5	1.800		
		m2	4	1.4		0.1	0.560		
	Parapet Wall	m2	2	4.98		0.13	1.295		
		m2	2	4.43		0.13	1.152		
	Inside	m2	2	4.85		0.3	2.910		
		m2	2	4.3		0.3	2.580		
		m2	4	0.45	0.33	0.6	-0.356		
	Deduction	m2	2	1.05	0.33	2.1	-1.455		
							77.966	45.10	3516.27
32	Protective and Decorative Acrylic Exterior emulsion paint of approved quality, as per manufacturer's specification and as per dircion of EIC to be applied overf Acrylic primer as required. The rate includes cost of materials, labour, scaffolding and all incedental charges but excluding the cost of primer in ground floor (two coats)(a) normal acrylic emulsion. PWD Building Works schedule, Page -197 , Item no-17(a)								
	Same quantity as above	m2					77.966	67.00	5223.72

33	(b) Priming one coat on timber or plastered surface with synthetic oil bound primer of approved quality including smoothening surfaces by sand papering etc. PWD Building Works schedule, Page -200 . Item no- 1 (b)	Sqm					6.350	38.00	241.30
34	(A) Painting with best quality synthetic enamel paint of approved make and brand including smoothening surface by sand papering etc. including using of approved putty etc. on the surface, if necessary : Page - 200 . Item no- 1 (b) (a) On timber or plastered surface : With super gloss (hi-gloss) - (iv) Two coats (with any shade except white) PWD Building Works schedule, Page -200 . Item no-	Sqm					6.350	81.00	514.35
35	(a) M.S. or W.I. Ornamental grill of approved design joints continuously welded with M.S, W.I. Flats and bars of windows, railing etc. fitted and fixed with necessary screws and lugs in ground floor.. (i) Grill weighing above 10 Kg./sq.mtr and up to 16 Kg./sq. mtr. PWD Building Works schedule, P-104 Item-13 A (i) (3rd Corrigendam Page No 91)								
		Sqm	6	0.6		0.6	2.160		
		Sqm	4	0.45		0.6	1.080		
		Sqm					3.240		
		Qntl	3.240	16			0.5184	10021.00	5194.89
36	a) Priming one coat on steel or other metal surface with synthetic oil bound primer of approved quality including smoothening surfaces by sand papering etc. PWD Building Works schedule, P/200 Item-1(a)								
	Qty same as above Area	Sqm					3.240		
	Qty same as SI no 14	Sqm					4.200		
		Sqm					7.440	29.00	215.76
37	(A) Painting with best quality synthetic enamel paint of approved make and brand including smoothening surface by sand papering etc. including using of approved putty etc. on the surface, if necessary : (b) On steel or other metal surface : (iv) Two coats (with any shade except white) PWD Building Works schedule, P-200 Item-2(b)(iv)								
	Qty same as above Area	Sqm					7.440	79.00	587.76
38	Supplying and laying true to line and level vitrified tiles of approved brand (size not less than 600 mm X 600 mm X 10 mm thick) in floor, skirting etc. set in 20 mm sand cement mortar (1:4) and 2 mm thick cement slurry back side of tiles using cement @ 2.91Kg./sqM or using polymerised adhesive (6 mm thick layer applied directly over finished artificial stone floor/Mosaic etc without any backing course) laid after application slurry using 1.75 Kg of cement per sqM below mortar only, joints grouted with admixture of								
		Sqm	2	1	4.05	1.85	14.985		
		Sqm	2	1	4.05	2.5	20.250		
							35.235	1688.00	59476.68

39	Supplying, fitting & fixing 1st quality Ceramic tiles in walls and floors to match with the existing work & 4 nos. of key stones (10mm) fixed with araldite at the back of each tile & finishing the joints with white cement mixed with colouring oxide if required to match the colour of tiles including roughening of concrete surface, if necessary or by synthetic adhesive & grout materials etc. B) Wall Area of each tile above 0.09 Sq.m									
	Inside	Sqm	4	4.5	2.1		37.800			
		Sqm	4	1.85	2.1		15.540			
		Sqm	4	1.2	2.1		10.080			
		Sqm	2	1.6	2.1		6.720			
		Sqm	4	2.5	2.1		21.000			
	1/3 of the opening Deduction(Window)	Sqm	4	0.45	0.6	0.33	-0.356			
	Door	Sqm	2	1.05	2.1	0.33	-1.455			
	Door	Sqm	8	0.75	2.1	0.33	-4.158			
		Sqm					85.171	1036.00	88237.16	
40	Supplying profiles of required section made of Aluminium Alloy Extrusions conforming to IS: 732-1983 and IS: 1285-1975; Anodized (with required film thickness and specified colour / natural) matt finished conforming to IS: 1868-1983 for fabrication of composit door, sliding & casement windows, partitions, formed of basic sections of any ISI embossed / certified make and brand as per direction of Engineer - In- Charge. (Payment will be made on finished length of the work). (A) In 10-12 Micron thickness Anodizing film l) Natural white h) Louvered window. i) Top, bottom and side member. PWD Building Works schedule, PWD, P-233, l- 1(h) i	M	4	1	2.1		8.400	183.00	1537.20	
41	ii) Louvered Section.	M	4	2	0.6		4.800	658.00	3158.40	
42	iii) Cleat angle (Non-anodized).	M	4	4	0.4		6.400	263.00	1683.20	
43	Labour charge for fabrication and installation of composite door, window, partitions made from anodized extruded alloy aluminium sections for the following units:- (A) Glazed aluminium sliding windows made of extruded and anodized alloy aluminium sectios, fabrications, including cutting to proper shape and size, drilling and aligning of window shutter frame fitted with in built locking arrangements, sliding rollers and other necessary fittings, fixture, adhesives and joineries along with extruded neoprene or EPDM gasketing in between window frame and masonry work (walls, column, beam.lintels etc.) as well as between glass and shutter frame for fixing glass and Polysulphide sealant and in between shutter and window frame where necessary including cutting to requisite size and fixing glass as per drawing, specification and direction of EIC. The rate includes the hire charge of all tools and plants, including all incidental charges, adhesive, joineries such as screw, cleat angle etc. but excluding the cost of extruded aluminium sections, glass, neoprene / EPDM gasket, locking arrangement and rollers.Louvered Window PWD Building Works schedule, P-239, l-2(v)									
			4	0.45			0.6	1.080	730.00	788.40
44	Supplying bubble free float glass of approved make and brand conforming to IS: 2835-1987. iv) 5mm thick coloured / tinted / smoke glass. PWD Building Works schedule, P-243, l-9	Sq.M.	4	0.45		0.6	1.080	585.00	631.80	

45	Painting block letters or digits in Black Japan or any approved paint as per direction. e) Size above 7.5 cm. and upto 10 cm. PWD Building Works schedule, P-268, It-17(e)	Each	450			450.000	12.00	5400.00
46	Supplying and planting of different plants / trees (supplying well grown plants bushy and healthy, minimum height as specified i.e. exposed height including all leads and lifts, carriage, handling, manuring applying pesticide and fertilizer etc. i) Furcaria Veriegated 10 to 12 leaves in height 20-30 cm in earthen pot of size 25 cm	Each	10			10.000	162.00	1620.00
47	x) Ficus blakii (F. Vivicon) well branched (Bushy) of height 120cm - 135 cm in earthen pot of size 30cm. PWD Building Works schedule, Page -261, It- 9 (x)	Each	3			3.000	187.00	561.00
48	xxvi) Areca Palm 4 - 5 suckers of height 90 cm to 105 cm in earthen pots of size 25 cm. PWD Building Works schedule, Page -261, It- 9 (xxvi)	Each	3			3.000	127.00	381.00
SANITARY AND PLUMBING WORKS								
49	Supplying, fitting and fixing Anglo-Indian W.C. in white glazed vitreous china ware of approved make complete in position with necessary bolts, nuts etc. a) With 'P' trap (with vent) PWD S&P Schedule, page-79, item no -3 (a)	Each	4			4.000	3104.00	12416.00
50	Supplying, fitting and fixing Closet seat of approved make with lid and C.P. hinges, rubber buffer and brass screws complete .(b) Anglo Indian (i) Plastic (hallow type) White PWD S&P Schedule, page-81,item no 10.b.i	Each	4			4.000	485.00	1940.00
51	Supplying, fitting and fixing Flat back urinal (half stall urinal) in white vitreous chinaware of approved make in position with brass screws on 75 mm X 75 mm X 75 mm wooden blocks complete (ii) 470 mm X 280 mm X 340 mm PWD S&P Schedule, page.80,item no-8/(ii)	Each	3			3.000	945.00	2835.00
52	Supplying fitting and fixing squatting plate with integrated flushing in white vitreous set in cement concrete (6:3:1) with jhama chips complete. (Payment of concrete will be paid seperately) (l) 450 mm x 350 mm	each	2			2.000	881.00	1762.00
53	Supplying, fitting and fixing 10 litre P.V.C. low-down cistern conforming to I.S. specification with P.V.C. fittings complete,C.I. brackets including two coats of painting to bracket etc. PWD S&P Schedule, Page No.-36 Item No.-2,	Nos	4			4.000	1015.00	4060.00
54	Supplying,fitting and fixing 32 mm dia. Flush Pipe of approved make with necessary fixing materials and clamps complete. i) Polythene Flush Pipe PWD S&P Schedule, Page no 81. Item no. 11(i)	Each	4			4.000	155.00	620.00
55	Supplying, fitting and fixing urinal flush pipe fittings of approved brand. (a) C.P. urinal flush pipe fittings range of one PWD S&P Schedule, S.P.81,item-12/a	Each	2			2.000	414.00	828.00
56	Supplying, fitting and fixing white vitreous china best quality approved make wash basin with C.I. brackets on 75 mm X 75 mm wooden blocks, C.P. waste fittings of 32 mm dia., mending good all damages and painting the brackets with two coats of approved paint. (ii) 550 mm X 400 mm size PWD S&P Schedule, P-41, It 2 (ii)	Each	2			2.000	2208.00	4416.00
57	Supplying fitting and fixing pedestal of approved make for wash basin (White) PWD S&P Schedule, P-41, It 3	Each	2			2.000	1497.00	2994.00

58	Supplying, fitting and fixing approved brand P.V.C. CONNECTOR white flexible, with both ends coupling with heavy brass C.P. nut, 15 mm dia., (iii) 600 mm long PWD S&P Schedule, Page No.-43 Item No.-9-iii PWD,	Each	5			5.000	107.00	535.00
59	Supplying, fitting and fixing approved brand 32 mm dia. P.V.C. waste pipe, with PVC coupling at one end fitted with necessary clamps. (iv) 1050 mm long each PWD S&P Schedule, Page No.-43 Item No. 10-iv	Each	2			2.000	91.00	182.00
60	(f) Hand Shower(Health Faucet) with 1mtr Flexible Tube with Wall Hook(Equivalent to Code No.573 & Model -ALLIED of Jaquar or similar). PWD S&P Schedule, Page No.-3 Item No.- 3 f,	Each	5			5.000	1251.00	6255.00
61	(a) (i) Chromium plated Bib Cock short body (Equivalent to Code No. 511 & Model - Tropical / Sumthing Special of ESSCO or similar brand). PWD S&P Schedule, Page No.-6 Item No.-7-a-i	Each	7			7.000	539.00	3773.00
62	(b) (i) Chromium plated Stop Cock (Equivalent to Code No. 513(A) & 513(B) & Model - Tropical / Sumthing Special of ESSCO or similar PWD S&P Schedule, Page No.-6 Item No.-7-b-i	Each	5			5.000	493.00	2465.00
63	Chromium plated angular Stop Cock with wall flange (Equivalent to Code No. 5053 & Model - Florentine of Jaquar or similar brand). PWD S&P Schedule, Page No.-6 Item No.-7-d-i,	Each	5			5.000	815.00	4075.00
64	Supplying, fitting and fixing pillar cock of approved make. a) (i) CP Pillar Cock - 15 mm. (Equivalent to Code No. 507 & Model - Tropical / Sumthing Special of ESSCO or similar brand). (P. No. - 45, Item. No. - 19(a)i, Pwd Sanitary Plumbing Schedule 2017)	Each	2			2.000	555.00	1110.00
65	Supplying, fitting and fixing PVC pipes of approved make of Schedule 80 (medium duty) conforming to ASTM D - 1785 and threaded to match with GI Pipes as per IS : 1239 (Part - I). with all necessary accessories, specials viz. socket, bend, tee, union, cross, elbo, nipple, longscrew, reducing socket, reducing tee, short piece etc. fitted with holder bats clamps, including cutting pipes, making threads, fitting, fixing etc. complete in all respect including cost of all necessary fittings as required, jointing materials and two coats of painting with approved paint in any position above ground. (Payment will be made on the centre line measurements of total pipe line including all specials. No separate payment will be made for accessories, specials. Payment for painting will be made	Mtr	25			25.000	177.00	4425.00
66	(a) (a) For Exposed Work PVC Pipes, 15 mm Page No.-12 Item No.-19-i(a), PWD, VOL-II, 2017-18	Mtr	10			10.000	101.00	1010.00
67	(b) For Concealed Work PVC Pipes, 15 mm Page No.-12 Item No.-19-i(b), PWD, VOL-II, 2017-18	Mtr	10			10.000	137.00	1370.00
68	Supplying and fitting fixing of gunmetal wheel valve of approved brand and make tested to 21 Kg per sq. cm. 25 mm dia(E5) PWD S&P Schedule, P-5 It-5,vii),	Each	2			2.000	778.00	1556.00
69	Supplying P.V.C. water storage tank of approved quality with closed top with lid (Black) - Multilayer (b) 1000 litre capacity PWD S&P Schedule, page.37,item no-6 (b)	Each	2			2.000	5128.00	10256.00
70	Labour for hoisting plastic water storage tank. (i) Upto 1500 litre capacity. (a) Upto 1st story from G.L. PWD S&P Schedule, page.37,item no-10 (i)(a)	Each	2			2.000	96.00	192.00
71	Labour for punching hole in plastic water storage tank upto 50 mm dia. PWD S&P Schedule, (P. No. - 38, Item. No. - 13	Each	4			4.000	19.00	76.00

72	Supply of UPVC pipes (B Type) & fittings conforming to IS-13592- 1992.(A) (i) Single Socketed 3 Meter Length, (b) 110 mm PWD S&P Schedule, Page No.-68 Item No. 23.(A)(i)(b)	Mtr	30				30.000	292.00	8760.00
73	(B) Fittings (i) Coupler, (b) 110 mm	Each	8				8.000	85.00	680.00
74	(ii) Plain Tee, (b) 110 mm	Each	12				12.000	85.00	1020.00
75	(iii) Door Tee, (b) 110 mm	Each	10				10.000	195.00	1950.00
76	ix) Bend 45°, (b) 110 mm	Each	10				10.000	89.00	890.00
77	xi) Door Bend (T.S.), (b) 110 mm	Each	7				7.000	147.00	1029.00
78	xvi) Pipe Clip, (b) 110 mm	Each	30				30.000	21.00	630.00
79	xvii) W.C. Connector (150 mm long) 125 X 110(W/WC Ring) 75 mm	Each	4				4.000	142.00	568.00
80	xxxi) Plain Floor Trap with Top tile & Strainer 75 mm	Each	7				7.000	144.00	1008.00
81	L) Rubber Ring, (b) 110 mm	Each	15				15.000	17.00	255.00
82	C)Rubber Lubricant 500 ML	500 ML	1				1.000	187.00	187.00
83	D)Solvent Cement 250 ML	250 ML	1				1.000	103.00	103.00
84	Labour for fitting and fixing U.P.V.C. pipes for above ground work including cost of jointing materials etc. fitting and fixing all necessary specials, cutting pipes, cutting holes in total pipeline including specials. (B) Under ground, (ii) 110 mm dia. PWD S&P Schedule, (P. - 74, Item. No. - 24 (B)	Mtr	25				25.000	84.00	2100.00
85	Supplying, fitting & fixing UPVC pipes A- Type and fittings conforming to IS:13592-1992 with all necessary clamps nails, including making holes in walls, floor etc. cutting trenches in any soil through masonry concrete structures etc if necessary and mending good damages including joining with jointing materials (Spun Yarn, Valamoid/Bitumen/M-Seal etc) complete. A) UPVC Pipes: (i) 75 mm. Dia. (P. - 212, Item. No. - 21 (A)(i) , (B),(c),(i) & (B), (d),(i), Pwd volume- i, 2017)	Mtr	30				30.000	188.00	5640.00
86	B) UPVC Fittings: c) Bend 87.5 degree (i) 75 mm. Dia.	Mtr	6				6.000	95.00	570.00
87	B) UPVC Fittings: d) Shoe (i) 75 mm. Dia.	Mtr	2				2.000	78.00	156.00
88	Constructing Inspection pit of inside measurement 600mm X 600mm X upto 600mm (depth) with 250 mm thick 1st. class brick work in cement mortar (1:4) on all sides, bottom of the pit consisting of 100 mm thick cement concrete (1:3:6) with stone chips over a layer of jhama brick flat soling, 15 mm thick (1:4) cement plaster to inside walls and out-side walls upto G.L. and 20 mm.thick (1:4) plaster to bottom of the pit, providing necessary invert with cement concrete (1:3:6) with stone chips as per direction, neat cement finishing to entire internal surfaces, top of the pit covered with 100 mm thick R.C.C. slab (1:1.5:3) with stone chips and necessary reinforcements upto 1% and shuttering including 6 mm thick cement plaster (1:4) in all external surfaces of the slab and one 560 mm dia. R.C.C. manhole cover of approved make supplied, fitted and fixed in the slab with necessary fittings, necessary earthwork in excavation in all sorts of soil, filling sides of the pit with earth and removing spoils after work complete in all respect with all costs of labour and materials. i) With Pakur variety (Other than SAIL/TATA/RINL). PWD S&P Schedule, S.P.87,Item No-1/(i), 7th Corrigenda Volume ii	Each	3				3.000	6450.00	19350.00

89	<p>Construction of septic tank of different capacities as per approved drawing with 1st class brick work in cement mortar (1:4) including two 560 mm dia. R.C.C. manhole cover (heavy type) of approved make supplied, fitted and fixed in the 100mm thick R.C.C (1:1.5:3) top slab with necessary fittings, 20mm thick cement plaster (4 : 1) with neat cement finish to the internal surfaces and 15 mm thick cement plaster (4 : 1) to outside wall upto 200 mm below G.L floor finished with 25 mm thick grey artificial stone over 100 mm thick R.C.C(1:1.5:3) bottom slab including supplying, fitting and fixing all necessary specials, fittings, S.W. tees, C.I. foot rest etc. including excavation earth in all sorts of soil, shoring, bailing out and pumping out water as necessary, ramming, dressing the bed and refilling the sides of the tanks with earth, removing spoils, filling up the chamber with clear water, removing foreign materials from the chamber and including constructing attached inspection pit as per approved drawing and connecting all necessary pipes, joints etc. with internal plaster work and artificial stone flooring is to be done with admixture of water proofing compound @ 0.5% by weight of cement with all costs of labour and materials.</p> <p>(ii) For 20 users A) With Pakur variety. (JSW/JSPL/SHYAM/SRMB/ELECTROSTEEL/SSL) PWD S&P Schedule, S.P.88, Item No-3(ii)(A) 7th Corrigenda Volume ii</p>	Each	1				1.000	44519.00	44519.00
90	<p>Construction of circular soak well 2.5 metre deep in all types of sandy soils with dry brick work upto 1.6 metre from the bottom having 150 mm intermediate cement brick work (1:4) band all round and cement brick work (1:4) upto 0.90 metre from top with 20mm thick cement plastering (1:4) to inside face upto the depth of cement brick work, 15mm thick cement plaster (1:4) on outer face from top of the well upto G.L. and 6 mm thick cement plaster (1:4) on top of the R.C.C. cover slab including filling bottom 1.00 metre of inside of the well with brick metal (50 mm to 63 mm size) including R.C.C. cover slab of 100 mm thick with cement conc (1:1.5:3) with stone chips with necessary reinforcement and shuttering including one 560 mm dia. R.C.C. manhole cover (heavy type) of approved make supplied, fitted and fixed in the cover slab with necessary fittings, making necessary arrangements for pipe connections, excavation of well including shoring, dewatering and removing the excess earth from the excavation site.</p>	Each	1				1.000	15554.00	15554.00
91	<p>Supplying, fitting and fixing towel rail with two brackets. (a) C.P. over brass (ii) 25 mm dia. and 600 mm long PWD S&P Schedule, p No 82 I No- 22 (a)(ii)</p>	Each	2				2.000	430.00	860.00
92	<p>Supplying, fitting and fixing bevelled edged mirror 5.5 mm thick silver red as per I.S. 3438 / 1965 together with brass C.P. hinges. (ii) 600 mm X 450 mm PWD S&P Schedule, P-81, It-15(ii)</p>	Each	2				2.000	484.00	968.00
93	<p>Supplying, fitting and fixing soap holder. (b) Fibre glass Sanitary and plumbing work schedule P-82, It-18(b)</p>	Each	4				4.000	58.00	232.00

94	Supplying, fitting and fixing glass shelf with aluminium guard rails. (a) Ordinary type with 5.5 mm sheet glass (i) 450 mm X 125 mm Sanitary and plumbing work schedule P-81, It-16(a)(i)	Each	2				2.000	341.00	682.00
									734485.75
	Add S.G.S.T. @								66,163.90
	Add C.G.S.T. @								66,163.90
	Cost Of Civil Work								8,67,482.20
	Add Labour Welfare Cess. @							1%	8,647.82
	Total Amount Including L.abour Welfare Cess.								8,76,157.03
	Add Contengency @3% Excluding Labour Cess								26,024.47
	Total Amount Including L.W.C. and contengency								9,02,181.49
									9,20,181.00
									901361.00
	Say Rs.Nine Lakh One Tousand Three Hundred Sixty One Only								

21/02/25
Junior Engineer
Jalpaiguri Division M.E.Dte.

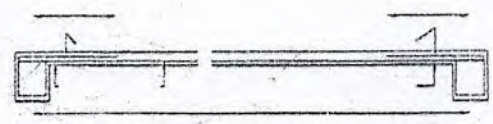
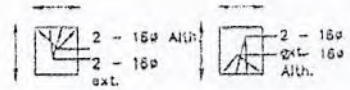
21/02/25
Assistant Engineer
Jalpaiguri Division M.E. Dte.

24/02/25
Executive Engineer
Jalpaiguri Division M.E. Dte

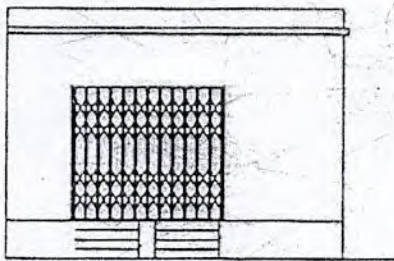
[Signature]
Haldibari Municipality

[Signature]
Sub-Assistant Engineer,
Haldibari Municipality
Haldibari, Cooch Behar

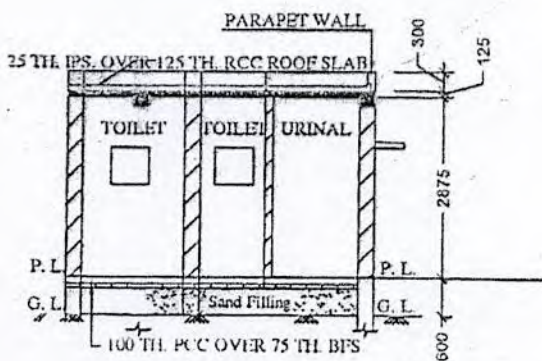
MODEL DRAWING FOR CONSTRUCTION OF C. T./P.T.
 TOILET SEATS 4 Nos URINAL 5 Nos
 MODEL NO.- G



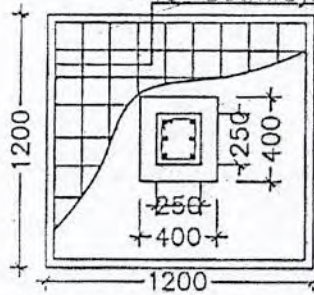
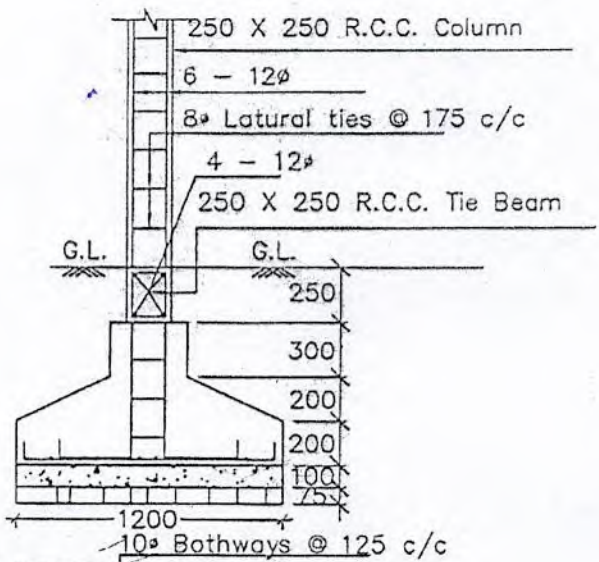
Details Of R.C.C Roof Slab & Beam
 (SCALE - 1 : 25)



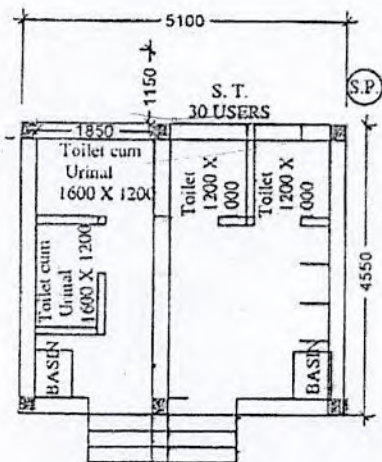
FRONT ELEVATION



SECTION - 'A - A'



DETAILS OF R. C. C COLUMN
 (SCALE - 1 : 25)



Checked & Verified

Pradeep Kumar

Engineer (Civil)

HILL INSPIRATION

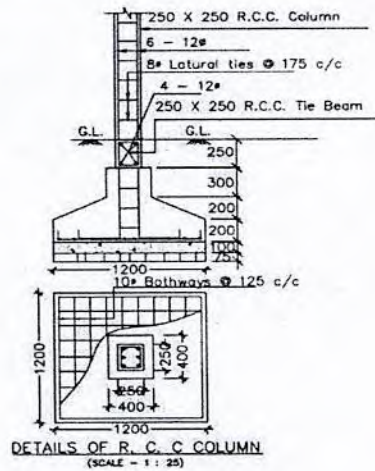
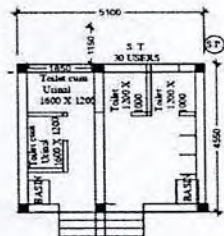
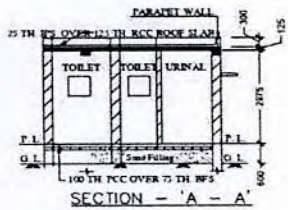
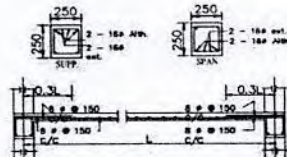
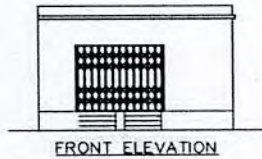


Shakm



Latitude: 26.335459
 Longitude: 88.730064
 Elevation: 93.19111 m
 Accuracy: 7.8 m
 Time: 19-12-2024 12:02
 Note: Townclub

MODEL DRAWING FOR CONSTRUCTION OF C. T./P.T.
 TOILET SEATS 4 Nos URINAL 5 Nos
 MODEL NO.- G



Handwritten signature
 Sub-Assistant Engineer
 Haldibari Municipality
 Haldibari, Cooch Behar

Handwritten signature
 Chairman
 Haldibari Municipality

CONSTRUCTION OF PUBLIC TOILET(PT) AT TOWN CLUB, WARD NO-7 (MODEL-G)

Non Schedule Items that may required in preparation of CT/PT estimates

SL.NO	Description of Items		Quantity	Rate(Rs)	Amount(Rs)
1	Standard plastic Dustbin (12 lits)	Each	5	350	1750.00
2	Sinage ACP based & Reflecive vinyl	Each	51	3776	18880.00 3776.00
3	Supplying & fixing sinage with fixing stand post for public toilet for visible to passersby	Each	5	1000	5000.00
4	Glow sign board Name and contact details of the following are displayed prominently - Toilet	Each	1	5000	5000.00
5	Installation of Sinage	Each	1	2071	2071.00
6	Air Freshner (Pack of 4 nos) odonil	Each	8	216	1728.00
7	Air Freshner (Napthaline 250 gm)	Each	5	210	1050.00
8	Supplying paper Napkin	Each	5	50	250.00
9	Supplying Sanitary Napkin (whisper or other similar make)	Each	4	520	2080.00
10	Harpic (Blue 500 ml)	Each	4	300	1200.00
11	Harpic (Red 500 ml)	Each	4	150	600.00
12	Gala double lip floor wiper	Each	4	350	1400.00
13	Colin glass or surface cleaner	Litre	2	200	400.00
14	Muriatic Acid	Litre	2	145	290.00
15	Bleaching Powder	kg	4	120	480.00
16	Dettol, Lifebuoy or similar make liquid soap	Litre	8	140	1120.00
17	Rubber hand Gloves	Pair	6	80	480.00
18	Double Side plastic brush	Each	6	125	750.00
19	Plastic Broom	Each	4	170	680.00
20	SMS/any other ICT based feedback system (with number displayed on which SMS has to be sent)	Each	1	5000	5000.00
21	Mini Tulu pump	Each	1	4000	4000.00
22	Supplying roaster/register for keeping account of regular cleaning (D1)	Each	3	200	600.00
23	Lettering on toilet wall for display of name and contact details of ULB, Ward number and name of maintenance authority, sanitary inspector, etc (D3)	Each	1	1000	1000.00

Total Amount	55809.00	40705.00
Add 1% Laour Welfare Cess	558.09	407.05
Amount Including Labour Cess	56367.09	4112.05
Add contingency 3%of Total Amount	1674.27	1221.15
Amount Including Contingency	58041.36	42333.20
	58041.00	42333.00

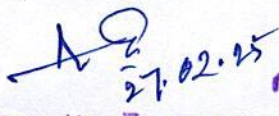
forty two thousand three hundred


Say Rs.Fifty Eight Thousand Forty one Only

thirty three only.


Junior Engineer
Jalpaiguri Division M.E.Dte.


Assistant Engineer
Jalpaiguri Division M.E.Dte.


27.02.25
Executive Engineer
Jalpaiguri Division M.E. Dte


Chairman
Haldibari Municipality


Sub-Assistant Engineer
Haldibari Municipality
Haldibari, Coochbehar

NAME OF WORK:- ESTIMATE FOR ELECTRICAL WORK OF 4 SEATED PUBLIC TOILET AT HALDIBARI TOWN CLUB WARD NO-7 (Model-G), WITHIN HALDIBARI MUNICIPALITY OF WEST BENGAL (MODEL-G) (ASPIRATIONAL PARAMETER)

* As per PWD & I & WD schedule district charges will be applicable on PWD & I & WD schedule items

* No district charges will be applicable on non-schedule items

Sl No.	Item Description	Unit	Quantity	Rate	District Charge 10%	Rate with District Charge (Rs)	Amount (Rs)
1	Distribution wiring in 2 x 22/0.3 (1.5 sqmm) single core stranded 'FR' PVC insulated & unsheathed copper wire (Brand approved by EIC) in 20mm size PVC rigid conduit 'FR' (Precision make), with 1x22/0.3 (1.5 sqmm) single core stranded 'FR' PVC insulated & unsheathed copper wire for ECC, to light/fan/call bell points with Piano Key type switch fixed on MS CRC sheet metal (16 SWG) switch board cum JB on wall complete with 2 no. suitable size 'Ph & N' copper bar incl bakelite/Perspex (wall matching color) top cover 3 mm thick and incl. 175mmx100mmx65mm inspection box, making earthing attachment, painting the MS box and mending good the damages to original finish (A) Average run 5 mtr [PWD Schedule Page No-E-14 Item No-2a]	Point	17	612.00	61.20	673.20	11444.40
2	Distribution wiring in 1.1 KV grade 22/0.3 (1.5 sqmm) single core stranded 'FR' PVC insulated & unsheathed copper wire (Brand approved by EIC) in 20mm size PVC rigid conduit 'FR' (Precision make), with 1.1 KV grade 1 x 22/0.3 (1.5 sqmm) single core stranded 'FR' PVC insulated & unsheathed copper wire as ECC, to 5A 3 pin flush type plug socket & Piano Key type switch fixed on MS CRC sheet metal (16 SWG) switch board cum JB on wall incl. bakelite/Perspex (wall matching color) top cover 3 mm thick and incl. painting the MS box and mending good the damages to original finish On Board (only for pay counter) [PWD Schedule Page No-E-15; I-4a]	Point	1	67.00	6.70	73.70	73.70
3	Supplying and fixing 240V 32A Double Pole AC Type 30mA RCCB (Complete Set) (ISI marked) [Make- Legrand] (Cat No 4113/95) [Legrand Page No-92]	Nos	1	5942.00		5942.00	5942.00
4	Distribution wiring in 1.1 KV single core stranded 'FR' PVC insulated & unsheathed copper wire (Brand approved by EIC) in 20mm size PVC rigid conduit 'FR' (Precision make) incl. necy. fittings as required 2 x 36/0.3 (2.5 sqmm) + 1 x 22/0.3 (1.5 sqmm) ECC [PWD Schedule Page No-E-14 Item No-1a(ii)]	mtr	17	119.00	11.90	130.90	2225.30
5	Supplying and fixing double-door SPN MCB Distribution Board with IP-42/43 protection, concealed in wall after cutting the wall & mending good the damages to original finish incl. Inter connection with suitable size of copper wire and neutral link & provision for earthing attachment. b) For (2+4 way) (Make -Havells)(above 6 seats)	No	1	935.00	93.50	1028.50	1028.50
6	Supplying and fixing 240/415 V MCB of Breaking capacity 10kA & C characteristics on din rail of existing DBs and necessary connection 6-32A SP MCB (Make -Havells) [PWD Schedule Page No-D-6; Item No-7]	Nos	4	168.00	16.80	184.80	739.20
7	Supplying and fixing 240/415 V MCB Isolator on din rail of existing DBs and necessary connection. 32A DP MCB Isolator (Make -Havells) [PWD Schedule Page No-D-5; Item No-6]	Nos	1	208.00	20.80	228.80	228.80
8	Supply of TMC501 conventional industrial batten (Philips make) LED Tube, model no-TMC501 P1XT-LED 22W P3241 (WB I & WD schedule P-113, I- 5:3 F.22)	Nos	4	451.00	13.53	464.53	1858.12
9	Fixing only single/twin fluorescent light fitting complete with all accessories directly on wall/ceiling by screws etc.. [PWD Schedule Page No-C-2; Item No-14a]	Nos	4	86.00	8.60	94.60	378.40
10	Supply & fixing Bulk head light fittings with die cast aluminium housing frosted/clear glass on wall/ceiling incl S/F 9 watt LED Lamp complete set. [Make - Havells] (PWD sch - Page--D-13, I-23) (569+District Charge+75)	Nos	6	569+District Charge+75		711.90	4271.40
11	Supply & fixing smart bright street light complete with all accessories to be fixed from the wall of building or on pole incl. making holes /providing clamping arrangement & necy. GI reducer as required S&F 40 mm GI Pipe 1.5 mtr average length & s&f necy length of 1.5 sqmm pvc insulated single core copper wire & making connections as required & mending good damages incl wall painting. (30 Watt) (Make - Bajaj) [WB I&WD sch P-111, I-19.0.2]	Nos	1	3016.00	90.48	3106.48	3106.48
12	Supply of 9" domestic metal exhaust fan 9" (225mm) SWEEP. TRANS AIR - (Make-Crompton/Havells/Bajaj) (UD & MA schedule P-14, I-5)	Nos	4	1863.00	No District Charge	1863.00	7452.00

13	Fixing only exhaust fan after making hole in wall and making good damages and smooth cement finish etc. as practicable as possible and providing neccy. length of PVC insulated wire and making connection for exhaust of following diameter: 22.5 cm (9") [PWD Schedule Page No-C-4;Item No-28(b)]	Nos	4	247.00	24.70	271.70	1086.80
14	Fixing only louver shutter/cowl on wall with neccy. bolts & nuts (6 mm dia x 62 mm long) For 22.5 cm(9") Exhaust fan [PWD Schedule Page No-C-4;Item No-28(b)]	Nos	4	82.00	8.20	90.20	360.80
15	Supply of 240V A C Ceiling Fan (48" sweep,1200 mm complete) [Make-Crompton [for counter only] (UD & MA schedule P- 23, I- 70)	Each	1	2283.00	No District Charge	2283.00	2283.00
16	Fixing only Ceiling Fan [PWD sch P- C-3, I-21(a)]	Each	1	66.00	6.60	72.60	72.60
17	Supply & Fixing 240 V, 16/20 A Piano key type switch (Brand approved by EIC) on sheet metal switch board incl. S & F 100x100x65mm MS (16SWG) switch board and bakelite/perspex top cover of 3mm thick by Brass screws after making housing for switch by cutting bakelite/perspex cover and making necessary connections as required. (For Hand Dryer machine) [PWD sch P- E-6, I-17(b)]	Each	2	201.00	20.10	221.10	442.20
18	S/F 240V 25A Modular type starter (brand approved by EIC)with 25 A. Modular switch DP MCB (C-Curve)and 4 Module G.I. Moduar type switch board with 4 Module Top Cover Plate flushed in wall incl. S/F switch board and Cover Plate and making neccy. Connections with PVC Copper wire and earth connectivity wire etc. as per schedule [for Pump] [PWD Schedule Page No-E-19, Item No-17] (Please follow in details)	Nos	1	784.00	78.40	862.40	862.40
19	Supply and Fixing of 2 mm Polyvinyl glow sign board made of 22 SWG GI sheet box with 1"X1" aluminum channel for fixing the vinyl board after necessary cutting the letter as required & s/f LED tube light fittings along with all accessories. (16 sqft @495.00/sqft) (UD & MA schedule P-14, I-4)	Nos	1	7920.00	No District Charge	7920.00	7920.00
20	Earthing installation by GI earth Spike (1830 X 20 mm) including 8SWG GI EarthWire & GI nuts, bolts, washer etc.	Nos	1	450.00	No District Charge	450.00	450.00
Total							52226.10
Add 18% GST							9400.70
Total With GST (A)							61626.80
Cess @ 1%							616.27
total							62243.07
Contingency Amount on "A"							1848.80
(Total + GST) Rs:							64091.87
Say Rs.							64092.00
Service Connection Charges as per Quotation							

Say Rs. 64,092.00

[Signature]

Sub-Assistant Engineer,
Haldibari Municipality
Haldibari, Cooch Behar

[Signature]
Chairman
Haldibari Municipality

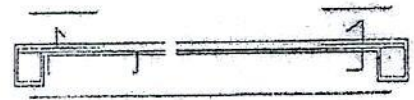
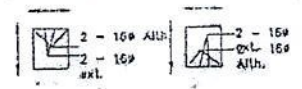
Technically Vetted Rs. 64,092.00
(Rupees Sixty Four Thousand Nine Hundred and Ninety Two only)

[Signature]
20.03.25
Junior Engineer
Electrical & Mechanical Division
SUDA

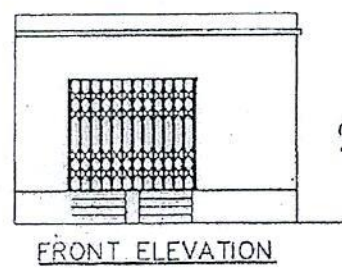
[Signature]
20.3.25
ASSISTANT ENGINEER
ELECTRICAL & MECHANICAL DIVISION
SUDA

[Signature]
21/3/25
Executive Engineer (E/M)
O/O the Secretary M.E. Dte.
Government of West Bengal

HALDIBARI TOWN CLUB MODLE DRAWING FOR CONSTRUCTION OF C. T./P.T.
 TOILET SEATS 4 Nos URINAL 5 Nos
 MODLE NO.- G
 W/7.

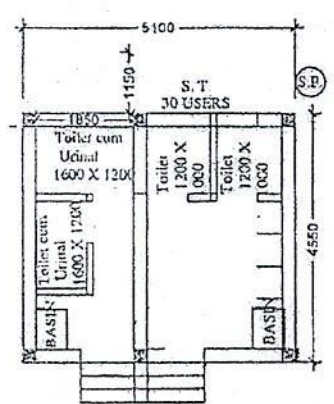
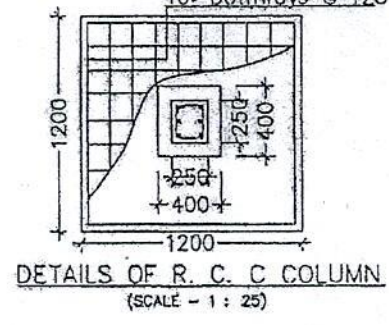
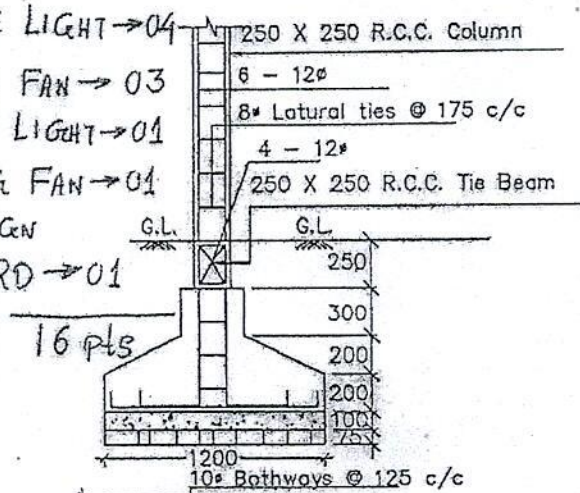
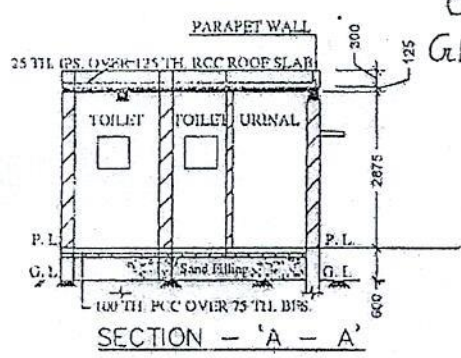


Details Of R.C.C Roof Slab & Beam
 (SCALE - 1 : 25)



FRONT ELEVATION

- BULK HEAD LIGHT \rightarrow 06
- TUBE LIGHT \rightarrow 04
- EXHAUST FAN \rightarrow 03
- OUTDOOR LIGHT \rightarrow 01
- CEILING FAN \rightarrow 01
- GLOW SIGN BOARD \rightarrow 01



Checked & Verified
Prabin Chakrabarty
 Engineer (Civil)
 HILL INSPIRATION



[Signature]
 Chairman
 Haldibari Municipality

[Signature]
 Sub-Assistant Engineer
 Haldibari Municipality
 Haldibari, Cooch Behar