

**CONSTRUCTION OF PUBLIC TOILET(PT) AT BABU PARA STADIUM WITHIN HALDIBARI MUNICIPALITY WARD NO-7**

CIVIL WORKS									
TOILET SEATS 2 NOS URINAL 3 NOS									
MODEL- F									
Sl.NO	Item Description & Item No.	Unit	NOS	L	B	H	QTY	Rate	Amount
1	Earth work in excavation of foundation trenches or drains, in all sorts of soil (including mixed soil but excluding laterite or sandstone) including removing, spreading or stacking the spoils within a lead of 75 m. as directed. The item includes necessary trimming the sides of trenches, levelling, dressing and ramming the bottom, bailing out water as required complete. (a) Depth of excavation not exceeding 1,500 mm. PWD Building Works schedule Page - 1, Item -2.a								
		% Cu.m	4	1.2	1.2	1.13	6.509		
		% Cu.m	2	4.35	0.25	0.25	0.544		
		% Cu.m	2	2.33	0.25	0.25	0.291		
		% Cu.m	1	2.25	0.75	0.25	0.422		
		% Cu.m					7.766	11927.00	926.25
2	Earth work in filling in foundation trenches or plinth with good earth, in layers not exceeding 150 mm. including watering and ramming etc. layer by layer complete. (Payment to be made on the basis of measurement of finished quantity of work). (a) With earth obtained from excavation of foundation. PWD Building Works schedule, Page - 1, Item -3.a								
	2/3 OF THE ITEM 1	% Cu.m	0.667	7.766			5.177	7754.00	401.42
3	(A) Filling in foundation or plinth by silver sand in layers not exceeding 150 mm as directed and consolidating the same by thorough saturation with water, ramming complete including the cost of supply of sand. (payment to be made on measurement of finished quantity) PWD Building Works schedule, Page - 2, Item -4.a								
		% Cu.m	1	1.6	1.2	0.6	1.152		
		% Cu.m	1	1.5	1.2	0.6	1.080		
		% Cu.m	1	1	1.2	0.6	0.720		
		% Cu.m	1	1.13	1	0.6	0.678		
		% Cu.m	1	1.5	2.33	0.6	2.097		
		% Cu.m					5.727	52107.00	2984.17
4	Single Brick Flat Soling of picked jhama bricks including ramming and dressing bed to proper level and filling joints with local sand. PWD Building Works schedule, Page- 14, Item - 1 ( Corri. Page-01, Date-04-06-2018)	Sqm							
		Sqm	4	1.2	1.2		5.760		
		Sqm	1	2.25	0.75		1.688		
		Sqm	1	4.85	2.83		13.726		
		Sqm					21.174	324.00	6860.38
5	Cement concrete with 30 mm down graded shingles excluding shuttering. With N. B. Varity (a)1:3:6 proportion. PWD Building Works schedule, Page -34, Item -22(ii), ( Corri. Page- 09, Date-04-06-2018) Rate Analysis1 ( Corri. Page-01, Date-04-06-2018)								
		Cum	4	1.2	1.2	0.1	0.576		
		Cum	1	2.25	0.75	0.1	0.169		
		Cum	1	4.85	2.83	0.1	1.373		
		Cum					2.118	3260.93	6906.65

6	Ordinary Cement concrete (mix 1:1.5:3) with graded stone chips (20 mm nominal size) excluding shuttering and reinforcement, if any, in ground floor as per relevant IS codes. a) Pakur Variety /Chandil Variety PWD Building Works schedule, p-26 Item 10 a (Rate Analysis)								
		Cum	4	1.2	1.2	0.2	1.152		
	$(1.2 \times 1.2) + (0.4 \times 0.4) / 2 = 0.80$	Cum	4	0.8		0.2	0.640		
		Cum	4	0.4	0.4	0.3	0.192		
		Cum	3	2.33	0.25	0.25	0.437		
		Cum	1	1.2	0.25	0.25	0.075		
		Cum	2	4.35	0.25	0.25	0.544		
		Cum	1	1.2	0.25	0.25	0.075		
		Cum	1	1.00	0.25	0.25	0.063		
		Cum	4	0.25	0.25	3.35	0.838		
		Cum	2	2.33	0.25	0.2	0.233		
		Cum	3	4.35	0.25	0.2	0.653		
		Cum	1	1.6	0.13	0.2	0.042		
		Cum	1	1.00	0.13	0.2	0.026		
		Cum	1	1.2	0.13	0.2	0.031		
		Cum	3	0.5	0.45	0.1	0.068		
		Cum	2	4.1	0.25	0.13	0.267		
		Cum	3	2.33	0.25	0.13	0.227		
		Cum	1	4.85	2.83	0.13	1.784		
							7.347	6101.55	44828.09
7	25mm. thick damp proof course with cement concrete with stone chips (1:1.5:3) [with graded stone aggregate 10 mm nominal size] and admixture of water proofing compound as per manufacturer's specification followed by two coat of polymer based paint, (1st coat after 4 to 5 days of concrete laying and 2nd coat just before brick masonry work) as directed (cost of water proofing compound & polymer based paint to be paid separately). (Chequering not required over concrete or painted surface). [Note: - Waterproofing as per item 9, polymer based paint as per item 8 (a) of subhead C of Section (C). PWD Building Works schedule, Page -47, Item -1 (Rate Analysis)								
		Sqm	2	4.35	0.25		2.175		
		Sqm	3	2.33	0.25		1.748		
		Sqm	1	1.6	0.13		0.208		
		Sqm	1	1.2	0.13		0.156		1406.96
		Sqm	1	1	0.13		0.130	318.33	<del>2075.92</del>
		Sqm					4.417	<del>214.47</del>	<del>947.30</del>
8	125 mm brick work with 1st class bricks in cement mortar (1:4) in ground floor. PWD Building Works schedule, Page -16, Item-16, cori page -3, date -04.06.2018 (Rate Analysis)								
	Partition wall (3-.125-.2 = 2.68)	Sq.M.	1	1.6		2.68	4.288		
		Sq.M.	1	1.2		2.68	3.216		
		Sq.M.	1	1		2.68	2.680		
		Sq.M.	1	14.85		0.3	4.455		
	Less for opening Door	Sq.M.	2	0.75	2.1		-3.150		
							11.489	666.25	7654.55
9	Supplying and laying polythine sheet (150 gm/sq.m) over damp proof course or below flooring or roof terracing or foundation or foundation trenches. PWD Building Works schedule, Page -47, Item-3								
		Sq.M.	1	4.85	2.83		13.726	24.00	329.42

10	Hire and labour charges for shuttering with centering and necessary staging upto 4 m using approved stout props and thick hard wood planks of approved thickness with required bracing for concrete slabs, beams and columns, lintels curved or straight including fitting, fixing and striking out after completion of works (upto roof of ground floor) (f) 25 mm to 30 mm shuttering without staging in foundation PWD Building Works schedule, Page -42, Item- 36.f								
	Footing	Sqm	4	4	1.2	0.3	5.760		
	Col	Sqm	4	4	0.4	0.3	1.920		
	Col (GL to PL)	Sqm	4	4	0.25	0.6	2.400		
	Tie beam	Sqm	2	2	4.35	0.25	4.350		
	Tie beam	Sqm	3	2	2.33	0.25	3.495		
	Part Beam	Sqm	1	2	1.6	0.25	0.800		
	Part Beam	Sqm	1	2	1.2	0.25	0.600		
	Part Beam	Sqm	1	2	1	0.25	0.500		
							19.825	205.00	4064.13
11	Hire and labour charges for shuttering with centering and necessary staging upto 4 m using approved stout props and thick hard wood planks of approved thickness with required bracing for concrete slabs, beams and columns, lintels curved or straight including fitting, fixing and striking out after completion of works (upto roof of ground floor) (a) 25 mm to 30 mm thick wooden shuttering as per decision & direction of Engineer-In-Charge. PWD Building Works schedule, Page -42, Item- 36.a	Sqm							
	Column	Sqm	4	4	0.25	2.75	11.000		
	Lintel	Sqm	3	2	2.33	0.2	2.796		
	Lintel	Sqm	2	2	4.35	0.2	3.480		
	Partition Wall	Sqm	1	2	1.2	0.2	0.480		
		Sqm	1	2	1.6	0.2	0.640		
		Sqm	1	2	1	0.2	0.400		
	Opening								
	Window	Sqm	3	0.45		0.25	0.338		
	Door	Sqm	2	1.05		0.25	0.525		
		Sqm	2	0.75		0.13	0.195		
	Chajja	Sqm	3	0.5		0.45	0.675		
		Sqm	3	1.4		0.1	0.420		
	Roof Beam	Sqm	4	2.33		0.13	1.212		
		Sqm	2	1.6		0.13	0.416		
		Sqm	2	2.5		0.13	0.650		
	Outer Side	Sqm	1	15.35		0.25	3.838		
	Roof Slab	Sqm	1	4.85		2.83	13.726		
							40.791	328.00	13379.45
12	Artificial stone in floor ,dado, staircase etc with cement mortar (1:2:4) with stone chips lsied in panels as directed with topping made with ordinary or white cement (as necessary) and marbel dust in proportion (1:2) in cluding smooth finishing and rounding off corners including raking out joints or roughening of concrete surface and application of cement slurry before flooring works using cement @ 1.75 kg/ sq.m all complete including all materials and labour. In ground floor 3 mm thick topping using gray cement (ii) 25 mm PWD Building Works schedule, p-48 Item 6(ii)								
		Sq.m	1	4.85	2.83		13.726	<del>261.31</del>	<del>3586.74</del>
								262.37	3601.29

13	Reinforcement for reinforced concrete work in all sorts of structures including distribution bars, stirrups, binders etc initial straightening and removal of loose rust (if necessary), cutting to requisite length, hooking and bending to correct shape, placing in proper position and binding with 16 gauge black annealed wire at every intersection, complete as per drawing and direction. (a) For works in foundation and upto roof of ground floor/upto 4 m. (i) Tor steel/Mild Steel , JSPL/SWAYN/ELETRO/STEEL PWD Building Works schedule, Page - 43, Item - 40.a.i.1( Corri. 10th Page-01, Date-23-01-2020) (Rate Analysis)								
	1.2% of item 06	M.T.	0.012	7.347	7.85		0.692	58657.59	40591.05
14	Collapsible gate with 40 mm x 10 mm x 6 mm Tee as top and bottom guide rail , 20 mm x 10 mm x 2 mm vertical channels 100 mm apart in full stretched position 20m x 5 mm MS flats as collapsible bracings properly reveted and washered including 38 mm steel roller including locking arrangements , fitted and fixed in position with lugs set in cement concrete including cutting necessary hicks chasing etc in walls , floors etc and making good all damages . PWD Building Works schedule, Page -106, Item- .18								
		Sqm	2	1		2.1	4.200	4351.00	18274.20
15	Brick work with 1st class bricks in cement mortar (1:4) (a) Foundation and plinth ground floor PWD Building Works schedule, Page -15, Item-7.a (Rate Analysis)								
	Tie Beam to Plinth	Cu.m	3	2.33	0.25	0.6	1.049		
		Cu.m	2	4.35	0.25	0.6	1.305		
		Cu.m	1	1.6	0.25	0.35	0.140		
		Cu.m	1	1.2	0.25	0.35	0.105		
		Cu.m	1	1	0.25	0.35	0.088		
		Cu.m	1	2.25	0.75	0.15	0.253		
		Cu.m	1	2.25	0.5	0.15	0.169		
		Cu.m	1	2.25	0.25	0.15	0.084		
		Cu.m					3.193	5101.79	16290.02
16	Brick work with 1st class bricks in cement mortar (1:4) (b) superstructure ground floor PWD Building Works schedule, Page -15, Item-7.b (Rate Analysis)								
	3.0-0.25-.02=2.55	Cu.m	3	2.33	0.25	2.55	4.456		
		Cu.m	2	4.35	0.25	2.55	5.546		
		Cu.m	3	0.45	0.25	0.6	-0.203		
		Cu.m	2	1.05	0.25	2.1	-1.103		
		Cu.m					8.696	5324.79	46304.37
17	Labour for Chipping of concrete surface before taking up Plastering work. PWD Building Works schedule, P-192, It-1								
	Column	Sqm	4	4	0.25	3.35	13.400		
	Lintel	Sqm	3	2	2.33	0.2	2.796		
	Lintel	Sqm	2	2	4.35	0.2	3.480		
	Partition Wall	Sqm	1	2	1.6	0.2	0.640		
	Partition Wall	Sqm	1	2	1.2	0.2	0.480		
		Sqm	1	2	1	0.2	0.400		
	Below Opening								
	Window	Sqm	3	1	0.45	0.25	0.338		
	Door	Sqm	2	1	0.75	0.13	0.195		
		Sqm	2	1	1.05	0.25	0.525		
	Chajja	Sqm	3	2	0.45	0.5	1.350		

	Side	Sqm	3	1	1.4	0.1	0.420		
	Roof Beam	Sqm	2	1	4.85	0.25	2.425		
		Sqm	2	1	2.83	0.25	1.415		
	Inside	Sqm	2	2	4.35	0.13	2.262		
	Inside	Sqm	2	1	2.33	0.13	0.606		
	Slab	Sqm	1	1	4.85	2.83	13.726		
							44.458	21.00	933.62
18	Plaster (to wall, floor, ceiling etc.) with sand and cement mortar including rounding off or chamfering corners as directed and raking out joints including throating, nosing and drip course, scaffolding/staging where necessary (Ground floor).[Excluding cost of chipping over concrete surface] (i) With 1:6 cement mortar (c) 15 mm thick plaster PWD Building Works schedule, P-189 It- No. 1 (Rate Analysis)								
	Outer Side	Sqm	2		4.85		3.9	37.830	
		Sqm	2		2.83		3.9	22.074	
	Chajja	Sqm	3		0.45	0.5		0.675	
		Sqm	3		1.4		0.1	0.420	
	Inside	Sqm	4		2.33		0.78	7.270	
		Sqm	2		1.6		0.78	2.496	
		Sqm	2		2.5		0.78	3.900	
	Partition Wall	Sqm	2		1.6		0.78	2.496	
		Sqm	2		1.2		0.78	1.872	
		Sqm	2		1		0.78	1.560	
	Parapet Wall	Sqm	2		4.73		0.13	1.230	
		Sqm	2		2.7		0.13	0.702	
	Inside	Sqm	2		4.35		0.3	2.61	
		Sqm	2		2.33		0.3	1.398	
	Deduction 1/3 of the Opening	Sqm	3		0.45	0.33	0.6	-0.267	
		Sqm	2		1.05	0.33	2.1	-1.455	138.47 11743.78
		Sqm						84.811	138.48 11744.63
19	Plaster (to wall, floor, ceiling etc.) with sand and cement mortar including rounding off or chamfering corners as directed and raking out joints including throating, nosing and drip course, scaffolding/staging where necessary (Ground floor).[Excluding cost of chipping over concrete surface] (ii) With 1:4 cement mortar (c) 10 mm thick plaster PWD Building Works schedule, P-189 It- No. 1 (ii)(c) (Rate Analysis)								
	Chajja	Sqm	3		0.45	0.5		0.675	
		Sqm	1		4.1	2.33		9.553	123.48 1262.95
		Sqm						10.228	123.46 1262.75
20	Neat cement punning about 1.5 mm thick in wall ,dado, window sills, floors etc . Note cement 0.152 m3/100 m2	Sq.m	1		15.35		0.6	9.21	32.71 301.26
21	Supplying, fitting and fixing fibre reinforced polymer (FRP) Composite door frame as per approved section with glass fibre reinforced plastic moulded skins and a special sandwich core, so as to impart monolitaheic composite structure as per approved technology of Department of Science and Technology (DST) to satisfy IS: 4020 door testing performance criteria.. (i) 66mm x 90mm PWD Building Works schedule, P-115, It - 3 (i)	Mtr	2		4.95			9.900	497.00 4920.30
22	Supplying, fitting & fixing fibre reinforced polymer (FRP) Composite door shutters as per approved design with glass fibre reinforced plastic moulded skins and a special sandwich core, so as to impart monolitaheic composite structure as per approved technology of Department of Science and Technology (DST) to satisfy IS:4020 door testing performance criteria. In ground floor. ii) 25 mm thick P-125, It- 14(ii)	Sqm	2		0.62		2.03	2.517	2581.00 6496.38

23	Anodised aluminium barrel / tower / socket bolt (full covered) of approved manufactured from extruded section conforming to I.S. 204/74 fitted and fixed with cadmium plated screws . (vii) 225mm long x 10mm dia. bolt. PWD Building Works schedule, P-144, It No. 26 (vii)	Each	2				2.000	84.00	168.00
24	Iron butt hinges of approved quality fitted and fixed with steel screws, with ISI mark. (viii) 100mm X 75mm X 3.50mm. PWD Building Works schedule, P-140, It No. -5 (viii)	Each	6				6.000	66.00	396.00
25	Anodised aluminium decorative handle (hexagonal / fluted) of approved quality fitted and fixed complete. (i) 150mm plate x 10mm dia rod x 12mm hexagonal/fluted. PWD Building Works schedule, Page -146 . Item no-31,(i)	Each	4				4.000	87.00	348.00
26	Iron hasp bolt of approved quality fitted and fixed complete (oxidised) with 16mm dia rod with concrete bolt and round fitting. b) 250mm long. PWD Building Works schedule, Page -141 . Item no-10 b)	Each	2				2.000	159.00	318.00
27	Supplying and laying chequered tiles of any shade and of approved quality with (1:1.5:3) cement concrete laied in pannels or patterns as directed in pavement ,footpath etc including necessary underlay 25 mm thick (avg)cement mortar (1:3) complete in all respect with all labour and materials .( Using cement slurry @4.4kg/sq.m at back side and @2.4 kg/sq.m for joint filling ). PWD Building Works schedule, Page -74 , Item no- 46(i) . 25 mm thick								
		sq.m	4	2.25	0.15		1.350		
		sq.m	3	2.25	0.25		1.688		
		sq.m	2	0.25	0.15		0.075		
		sq.m	2	0.5	0.15		0.150		
		sq.m	2	0.75	0.15		0.225		
							3.488	467.00	1628.90
28	Rendering the Surface of walls and ceiling with White Cement base WATER PROOF wall putty of approved make & brand.(1.5 mm thick) In Ground Floor PWD Building Works schedule, PWD, P- 198, I - 5								
	Same as Item no18+19-20=(84.811+10.228-9.21)	Sqm					85.829	122.00	10471.14
29	Applying interior grade Acrylic Primer of approved quality and brand on plastered and concrete surface old or new surface to receive Distemper Acrylic emulsion paint including scraping and preparing the surface thoroughly , complete as per manufacturer's specification and as per direction of the E-I-C ( Ground Floor ) ( b ) Two Coats PWD Building Works schedule, Page -74 , Item no-46(i) .	m <sup>2</sup>					<del>0.000</del>	<del>44.20</del>	<del>0.00</del>
	Inside	%Sqm	4	2.33		0.78	7.270		
		%Sqm	2	4.1		0.78	6.396		
		%Sqm	2	1.6		0.78	2.496		
		%Sqm	2	1.2		0.78	1.872		
		%Sqm	2	1		0.78	1.560		
		%Sqm	1	4.1		2.33	9.553	4420	2-1288.30
		%Sqm					29.147	<del>4422.00</del>	<del>1288.88</del>
		%Sqm							

30	Dry Destempering interial walls or ceiling including cleaning, washing, smoothening surface (b) two coats PWD Building Works schedule, Page -196 , Item no-9(b) .								
	Same quantity as above	m2					29.147	49.00	1428.20
31	Applying exterior grade Acrylic Primer of approved quality and brand on plastered or concrete surface old or new surface to receive Decorative Textured (Martt Finish) or Smooth Finish Acrylic exterior emulsion paint including scraping and preparing the surface thoroughly , complete as per manufacturer's specification and as per direction of the EIC in Ground Floor (b) two coats. PWD Building Works schedule, Page -196 , Item no-8(b)								
	Outer Side	m2	2	4.85		3.6	34.920		
		m2	2	2.83		3.6	20.376		
	Chajja	m2	6	0.45		0.5	1.350		
		m2	3	1.4		0.1	0.420		
	Parapet Wall	m2	2	4.73		0.13	1.230		
		m2	2	2.7		0.13	0.702		
	Inside	m2	2	4.6		0.3	2.760		
		m2	2	2.58		0.3	1.548		
		m2	3	0.45	0.33	0.6	-0.267		
	Deduction	m2	2	1.05	0.33	2.1	-1.455		
							61.584	45.10	2777.44
32	Protective and Decorative Acrylic Exterior emulsion paint of approved quality, as per manufacturer's specification and as per dirction of EIC to be applied overf Acrylic primer as required. The rate includes cost of materials, labour, scaffolding and all incedental charges but excluding the cost of primer in ground floor (two coats)(a) normal acrylic emulsion. PWD Building Works schedule, Page -197 , Item no-17(a)								
	Same quantity as above	m2					61.584	67.00	4126.13
33	(b) Priming one coat on timber or plastered surface with synthetic oil bound primer of approved quality including smoothening surfaces by sand papering etc. PWD Building Works schedule, Page -200 . Item no-1 (b)	Sqm					9.210	38.00	349.98
34	(A) Painting with best quality synthetic enamel paint of approved make and brand including smoothening surface by sand papering etc. including using of approved putty etc. on the surface, if necessary : Page - 200 . Item no- 1 (b) (a) On timber or plastered surface : With super gloss (hi-gloss) - (iv) Two coats (with any shade except white) PWD Building Works schedule, Page -200 . Item no-2(A)(a)(iv)	Sqm					9.210	81.00	746.01

35	(a) M.S.or W.I. Ornamental grill of approved design joints continuously welded with M.S, W.I. Flats and bars of windows, railing etc. fitted and fixed with necessary screws and lugs in ground floor. (i) Grill weighing above 10 Kg./sq.mtr and up to 16 Kg./sq. mtr. PWD Building Works schedule, P-104 Item-13 A (i) (3rd Corrigendam Page No 91)								
		Sqm	6	0.6		0.6	2.160		
		Sqm	3	0.45		0.6	0.810		
		Sqm					2.970		
		Qntl	2.970	16			0.4752	10021.00	4761.98
36	a) Priming one coat on steel or other metal surface with synthetic oil bound primer of approved quality including smoothening surfaces by sand papering etc. PWD Building Works schedule, P/200 Item-1(a)								
	Qty same as above Area	Sqm					2.970		
	Qty same as SI no 14	Sqm					4.200		
		Sqm					7.170	29.00	207.93
37	(A) Painting with best quality synthetic enamel paint of approved make and brand including smoothening surface by sand papering etc. including using of approved putty etc. on the surface, if necessary : (b) On steel or other metal surface : (iv) Two coats (with any shade except white) PWD Building Works schedule, P-200 Item-2(b)(iv)								
	Qty same as above Area	Sqm					7.170	79.00	566.43
38	Supplying and laying true to line and level vitrified tiles of approved brand (size not less than 600 mm X 600 mm X 10 mm thick) in floor, skirting etc. set in 20 mm sand cement mortar (1:4) and 2 mm thick cement slurry back side of tiles using cement @ 2.91Kg./sqM or using polymerised adhesive (6 mm thick layer applied directly over finished artificial stone floor/Mosaic etc without any backing course) laid after application slurry using 1.75 Kg of cement per sqM below mortar only, joints grouted with admixture of white cement and colouring Pigment to match with colour of tiles / epoxy grout materials of approved make as directed and removal of wax coating of top surface of tiles with warm water and polishing the tiles using soft and dry cloth upto mirror finish complete including the cost of materials, labour and all other incidental charges complete true to the manufacturer's specification and direction of Engineer-in-Charge. (White cement, synthetic adhesive and grout material to be supplied by the contrr[e] I (I) With application slurry @1.75 kg/ Sq.m, 20 mm sand cement mortar (1:4) & 2 mm thick cement slurry at back side of tiles, 0.2 kg/ Sq.m white cement for joint filling with pigment.	Sqm	2	1	4.1	2.33	19.106	1688.00	32250.93
39	Supplying, fitting & fixing 1st quality Ceramic tiles in walls and floors to match with the existing work & 4 nos. of key stones (10mm) fixed with araldite at the back of each tile & finishing the joints with white cement mixed with colouring oxide if required to match the colour of tiles including roughening of concrete surface, if necessary or by synthetic adhesive & grout materials etc. B) Wall Area of each tile above 0.09 Sq.m ii) Other than Coloured decorative including white PWD Building Works schedule, page-64, Item:35.(B.) (b).(ii) ( 3rd Corrigendam ,Page 36)								
	Inside	Sqm	4	2.33	2.1		19.572		
		Sqm	2	4.1	2.1		17.220		
		Sqm	2	1.6	2.1		6.720		

		Sqm	2	1.2	2.1		5.040		
		Sqm	2	1	2.1		4.200		
	1/3 of the opening Deduction(Window)	Sqm	3	0.45	0.6	0.33	-0.267		
	Door	Sqm	2	1.05	2.1	0.33	-1.455		
	Door	Sqm	4	0.75	2.1	0.33	-2.079		
		Sqm					48.951	1036.00	50713.24
40	Supplying profiles of required section made of Aluminium Alloy Extrusions conforming to IS: 732-1983 and IS: 1285-1975; Anodized (with required film thickness and specified colour / natural) matt finished conforming to IS: 1868-1983 for fabrication of composite door, sliding & casement windows, partitions, formed of basic sections of any ISI embossed / certified make and brand as per direction of Engineer - In- Charge. (Payment will be made on finished length of the work). (A) In 10-12 Micron thickness Anodizing film l) Natural white h) Louvered window. i) Top, bottom and side member. PWD Building Works schedule, PWD, P-233, I-1(h) i	M	3	1	2.1		6.300	183.00	1182.90
41	ii) Louvered Section.	M	3	2	0.6		3.600	658.00	2368.80
42	iii) Cleat angle ( Non-anodized).	M	3	4	0.4		4.800	263.00	1262.40
43	Labour charge for fabrication and installation of composite door, window, partitions made from anodized extruded alloy aluminium sections for the following units:- (A) Glazed aluminium sliding windows made of extruded and anodized alloy aluminium sections, fabrications, including cutting to proper shape and size, drilling and aligning of window shutter frame fitted with in built locking arrangements, sliding rollers and other necessary fittings, fixture, adhesives and joineries along with extruded neoprene or EPDM gasketing in between window frame and masonry work (walls, column, beam,lintels etc.) as well as between glass and shutter frame for fixing glass and Polysulphide sealant and in between shutter and window frame where necessary including cutting to requisite size and fixing glass as per drawing, specification and direction of EIC. The rate includes the hire charge of all tools and plants, including all incidental charges, adhesive, joineries such as screw, cleat angle etc. but excluding the cost of extruded aluminium sections, glass, neoprene / EPDM gasket, locking arrangement	Sq.M.	3	1	0.45	0.6	0.810	730.00	591.30
44	Supplying bubble free float glass of approved make and brand conforming to IS: 2835-1987. iv) 5mm thick coloured / tinted / smoke glass. PWD Building Works schedule, P-243, I-9	Sq.M.	3	0.45		0.6	0.810	585.00	473.85
45	Painting block letters or digits in Black Japan or any approved paint as per direction. e) Size above 7.5 cm. and upto 10 cm. PWD Building Works schedule, P-268, It-17(e)	Each	450				450.000	12.00	5400.00

46	Supplying and planting of different plants / trees (supplying well grown plants bushy and healthy, minimum height as specified i.e. exposed height including all leads and lifts, carriage, handling, manuring applying pesticide and fertilizer etc. i) Furcaria Veriegated 10 to 12 leaves in height 20-30 cm in earthen pot of size 25 cm	Each	7			7.000	162.00	1134.00
47	x) Ficus blakii (F. Vivicon) well branched (Bushy) of height 120cm - 135 cm in earthen pot of size 30cm. PWD Building Works schedule, Page -261, It- 9 (x)	Each	3			3.000	187.00	561.00
48	xxvi) Areca Palm 4 - 5 suckers of height 90 cm to 105 cm in earthen pots of size 25 cm. PWD Building Works schedule, Page -261, It- 9 (xxvi)	Each	3			3.000	127.00	381.00
SANITARY AND PLUMBING WORKS								
49	Supplying, fitting and fixing Anglo-Indian W.C. in white glazed vitreous china ware of approved make complete in position with necessary bolts, nuts etc. a) With 'P' trap (with vent) PWD S&P Schedule, page-79, item no -3 (a)	Each	2			2.000	3104.00	6208.00
50	Supplying, fitting and fixing Closet seat of approved make with lid and C.P. hinges, rubber buffer and brass screws complete .(b) Anglo Indian (i) Plastic (hallow type) White PWD S&P Schedule, page-81, item no 10.b.i	Each	2			2.000	485.00	970.00
51	Supplying, fitting and fixing Flat back urinal (half stall urinal) in white vitreous chinaware of approved make in position with brass screws on 75 mm X 75 mm X 75 mm wooden blocks complete (ii) 470 mm X 280 mm X 340 mm PWD S&P Schedule, page.80,item no-6/(ii)	Each	2			2.000	945.00	1890.00
52	Supplying fitting and fixing squatting plate with integrated flushing in white vitreous set in cement concrete (6:3:1) with jhama chips complete. ( Payment of concrete will be paid seperately ) ( 1 ) 450 mm x 350 mm	each	2			2.000	881.00	1762.00
53	Supplying, fitting and fixing 10 litre P.V.C. low-down cistern conforming to I.S. specification with P.V.C. fittings complete,C.I. brackets including two coats of painting to bracket etc. PWD S&P Schedule, Page No.-36 Item No.-2,	Nos	2			2.000	1015.00	2030.00
54	Supplying,fitting and fixing 32 mm dia. Flush Pipe of approved make with necessary fixing materials and clamps complete. i) Polythene Flush Pipe PWD S&P Schedule, Page no 81. Item no. 11(i)	Each	2			2.000	155.00	310.00
55	Supplying, fitting and fixing urinal flush pipe fittings of approved brand. (a) C.P. urinal flush pipe fittings range of one PWD S&P Schedule, S.P.81,item-12/a	Each	2			2.000	414.00	828.00
56	Supplying, fitting and fixing white vitreous china best quality approved make wash basin with C.I. brackets on 75 mm X 75 mm wooden blocks, C.P. waste fittings of 32 mm dia., mending good all damages and painting the brackets with two coats of approved paint. (ii) 550 mm X 400 mm size PWD S&P Schedule, P-41, It 2 (ii)	Each	2			2.000	2208.00	4416.00
57	Supplying fitting and fixing pedestal of approved make for wash basin ( White ) PWD S&P Schedule, P-41, It 3	Each	2			2.000	1497.00	2994.00

58	Supplying, fitting and fixing approved brand P.V.C. CONNECTOR white flexible, with both ends coupling with heavy brass C.P. nut, 15 mm dia., (iii) 600 mm long PWD S&P Schedule, Page No.-43 Item No.-9-iii PWD,	Each	5				5.000	107.00	535.00
59	Supplying, fitting and fixing approved brand 32 mm dia. P.V.C. waste pipe, with PVC coupling at one end fitted with necessary clamps. (iv) 1050 mm long each PWD S&P Schedule, Page No.-43 Item No. 10-iv	Each	4				4.000	91.00	364.00
60	(f) Hand Shower(Health Faucet) with 1mtr Flexible Tube with Wall Hook(Equivalent to Code No.573 & Model -ALLIED of Jaquar or similar). PWD S&P Schedule, Page No.-3 Item No.- 3 f,	Each	2				2.000	1251.00	2502.00
61	(a) (i) Chromium plated Bib Cock short body (Equivalent to Code No. 511 & Model - Tropical / Sumthing Special of ESSCO or similar brand). PWD S&P Schedule, Page No.-6 Item No.-7-a-i	Each	3				3.000	539.00	1617.00
62	(b) (i) Chromium plated Stop Cock (Equivalent to Code No. 513(A) & 513(B) & Model - Tropical / Sumthing Special of ESSCO or similar PWD S&P Schedule, Page No.-6 Item No.-7-b-i	Each	1				1.000	493.00	493.00
63	Chromium plated angular Stop Cock with wall flange (Equivalent to Code No. 5053 & Model - Florentine of Jaquar or similar brand). PWD S&P Schedule, Page No.-6 Item No.-7-d-i,	Each	5				5.000	815.00	4075.00
64	Supplying, fitting and fixing pillar cock of approved make. a) (i) CP Pillar Cock - 15 mm. (Equivalent to Code No. 507 & Model - Tropical / Sumthing Special of ESSCO or similar brand). (P. No. - 45, Item. No. - 19(a)i, Pwd Sanitary Plumbing Schedule 2017)	Each	2				2.000	555.00	1110.00
65	Supplying, fitting and fixing PVC pipes of approved make of Schedule 80 (medium duty) conforming to ASTM D - 1785 and threaded to match with GI Pipes as per IS : 1239 (Part - I). with all necessary accessories, specials viz. socket, bend, tee, union, cross, elbo, nipple, longscrew, reducing socket, reducing tee, short piece etc. fitted with holder bats clamps, including cutting pipes, making threads, fitting, fixing etc. complete in all respect including cost of all necessary fittings as required, jointing materials and two coats of painting with approved paint in any position above ground. (Payment will be made on the centre line measurements of total pipe line including all specials. No separate payment will be made for accessories, specials. Payment for painting will be made separately) (a) For Exposed Work PVC Pipes, 25 mm Page No.-12 Item No.-19-i(a), PWD, VOL-II, 2017-18	Mtr	15				15.000	177.00	2655.00
66	(a) (a) For Exposed Work PVC Pipes, 15 mm Page No.-12 Item No.-19-i(a), PWD, VOL-II, 2017-18	Mtr	10				10.000	101.00	1010.00
67	(b) For Concealed Work PVC Pipes, 15 mm Page No.-12 Item No.-19-i(b), PWD, VOL-II, 2017-18	Mtr	10				10.000	137.00	1370.00
68	Supplying and fitting fixing of gunmetal wheel valve of approved brand and make tested to 21 Kg per sq. cm. 25 mm dia(E5) PWD S&P Schedule, P-5 It-5,vii),	Each	2				2.000	778.00	1556.00
69	Supplying P.V.C. water storage tank of approved quality with closed top with lid (Black) - Multilayer (b) 1000 litre capacity PWD S&P Schedule, page.37,item no-6 (b)	Each	2				2.000	5128.00	10256.00

70	Labour for hoisting plastic water storage tank. (i) Upto 1500 litre capacity. (a) Upto 1st story from G.L. PWD S&P Schedule, page.37,item no-10 (i)(a)	Each	2			2.000	96.00	192.00
71	Labour for punching hole in plastic water storage tank upto 50 mm dia. PWD S&P Schedule, (P. No. - 38, Item. No. - 13	Each	2			2.000	19.00	38.00
72	Supply of UPVC pipes (B Type) & fittings conforming to IS-13592- 1992.(A) (i) Single Socketed 3 Meter Length, (b) 110 mm PWD S&P Schedule, Page No.-68 Item No. 23.(A)(i)(b)	Mtr	30			30.000	292.00	8760.00
73	(B) Fittings (i) Coupler, (b) 110 mm	Each	8			8.000	85.00	680.00
74	(ii) Plain Tee, (b) 110 mm	Each	12			12.000	85.00	1020.00
75	(iii) Door Tee, (b) 110 mm	Each	10			10.000	195.00	1950.00
76	ix) Bend 45°, (b) 110 mm	Each	10			10.000	89.00	890.00
77	xi) Door Bend (T.S.), (b) 110 mm	Each	7			7.000	147.00	1029.00
78	xvi) Pipe Clip, (b) 110 mm	Each	20			20.000	21.00	420.00
79	xvii) W.C. Connector (150 mm long) 125 X 110(W/WC Ring) 75 mm	Each	4			4.000	142.00	568.00
80	xxxi) Plain Floor Trap with Top tile & Strainer 75 mm	Each	7			7.000	144.00	1008.00
81	L) Rubber Ring, (b) 110 mm	Each	15			15.000	17.00	255.00
82	C)Rubber Lubricant 500 ML	500 ML	1			1.000	187.00	187.00
83	D)Solvent Cement 250 ML	250 ML	1			1.000	103.00	103.00
84	Labour for fitting and fixing U.P.V.C. pipes for above ground work including cost of jointing materials etc. fitting and fixing all necessary specials, cutting pipes, cutting holes in total pipeline including specials. (B) Under ground, (ii) 110 mm dia. PWD S&P Schedule, (P. - 74, Item. No. - 24 (B)	Mtr	25			25.000	84.00	2100.00
85	Supplying, fitting & fixing UPVC pipes A- Type and fittings conforming to IS:13592-1992 with all necessary clamps nails, including making holes in walls, floor etc. cutting trenches in any soil through masonry concrete structures etc if necessary and mending good damages including joining with jointing materials (Spun Yarn, Valamoid/Bitumen/M-Seal etc) complete. A) UPVC Pipes: (i) 75 mm. Dia. (P. - 212, Item. No. - 21 (A)(i) . (B),(c),(i) & (B), (d),(i), Pwd volume- i, 2017)	Mtr	30			30.000	188.00	5640.00
86	B) UPVC Fittings: c) Bend 87.5 degree (i) 75 mm. Dia.	Mtr	6			6.000	95.00	570.00
87	B) UPVC Fittings: d) Shoe (i) 75 mm. Dia.	Mtr	2			2.000	78.00	156.00

88 -	<p>Constructing Inspection pit of inside measurement 600mm X 600mm X upto 600mm (depth) with 250 mm thick 1st. class brick work in cement mortar (1:4) on all sides, bottom of the pit consisting of 100 mm thick cement concrete (1:3:6) with stone chips over a layer of jhama brick flat soiling, 15 mm thick (1:4) cement plaster to inside walls and out-side walls upto G.L. and 20 mm.thick (1:4) plaster to bottom of the pit, providing necessary invert with cement concrete (1:3:6) with stone chips as per direction, neat cement finishing to entire internal surfaces, top of the pit covered with 100 mm thick R.C.C. slab (1:1.5:3) with stone chips and necessary reinforcements upto 1% and shuttering including 6 mm thick cement plaster (1:4) in all external surfaces of the slab and one 560 mm dia. R.C.C. manhole cover of approved make supplied, fitted and fixed in the slab with necessary fittings, necessary earthwork in excavation in all sorts of soil, filling sides of the pit with earth and removing spoils after work complete in all respect with all costs of labour and materials.</p> <p>i) With Pakur variety (Other than SAIL/TATA/RINL). PWD S&amp;P Schedule, S.P.87,Item No-1/(i), 7th Corrigenda Volume ii</p>	Each	3	3.000	6450.00	19350.00
89	<p>Construction of septic tank of different capacities as per approved drawing with 1st class brick work in cement mortar (1:4) including two 560 mm dia. R.C.C. manhole cover(heavy type)of approved make supplied, fitted and fixed in the 100mm thick R.C.C (1:1.5:3) top slab with necessary fittings, 20mm thick cement plaster (4 : 1) with neat cement finish to the internal surfaces and 15 mm thick cement plaster (4 : 1) to outside wall upto 200 mm below G.L floor finished with 25 mm thick grey artificial stone over 100 mm thick R.C.C(1:1.5:3) bottom slab including supplying, fitting and fixing all necessary specials, fittings, S.W. tees, C.I. foot rest etc. including excavation earth in all sorts of soil, shoring, bailing out and pumping out water as necessary, ramming, dressing the bed and fefilling the sides of the tanks with earth, removing spoils, filling up the chamber with clear water, removing foreign materials from the chamber and including constructing attached inspection pit as per approved drawing and connecting all necessary pipes, joints etc. with internal plaster work and artificial stone flooring is to be done with admixture of water proofing compound @ 0.5% by weight of cement with all costs of labour and materials.</p>	Each	1	1.000	44519.00	44519.00

90	Construction of circular soak well 2.5 metre deep in all types of sandy soils with dry brick work upto 1.6 metre from the bottom having 150 mm intermediate cement brick work (1:4) band all round and cement brick work (1:4) upto 0.90 metre from top with 20mm thick cement plastering (1:4) to inside face upto the depth of cement brick work, 15mm thick cement plaster (1:4) on outer face from top of the well upto G.L. and 6 mm thick cement plaster (1:4) on top of the R.C.C. cover slab including filling bottom 1.00 metre of inside of the well with brick metal (50 mm to 63 mm size) including R.C.C. cover slab of 100 mm thick with cement conc (1:1.5:3) with stone chips with necessary reinforcement and shuttering including one 560 mm dia. R.C.C. manhole cover (heavy type) of approved make supplied, fitted and fixed in the cover slab with necessary fittings, making necessary arrangements for pipe connections, excavation of well including shoring, dewatering and removing the excess earth from the premises as per direction complete in all respect with all costs of labour and materials. With 250 mm thick dry brick work and 250 mm thick cement brick work (1:6) and 1.00m inside dia. (Other than SAIL/TATA/RINL) S.P.89,Item No-4 7th Corrigenda Volume ii	Each	1				1.000	15554.00	15554.00
91	Supplying, fitting and fixing towel rail with two brackets. (a) C.P. over brass (ii) 25 mm dia. and 600 mm long PWD S&P Schedule, p No 82 I No- 22 (a)(ii)	Each	2				2.000	430.00	860.00
92	Supplying, fitting and fixing bevelled edged mirror 5.5 mm thick silver red as per I.S. 3438 / 1965 together with brass C.P. hinges. (ii) 600 mm X 450 mm PWD S&P Schedule, P-81, It-15(ii)	Each	2				2.000	484.00	968.00
93	Supplying, fitting and fixing soap holder. (b) Fibre glass Sanitary and plumbing work schedule P-82, It-18(b)	Each	2				2.000	58.00	116.00

94	Supplying, fitting and fixing glass shelf with aluminium guard rails. (a) Ordinary type with 5.5 mm sheet glass (i) 450 mm X 125 mm Sanitary and plumbing work schedule P-81, It-16(a)(i)	Each	2				2.000	341.00	682.00	
									522,897.54	
									522433.97	
	Add S.G.S.T. @							47060.78	9%	47019.06
	Add C.G.S.T. @							47060.78	9%	47019.06
	Cost Of Civil Work							617019.07		616472.08
	Add Labour Welfare Cess. @							6170.19	1%	6164.72
	Total Amount Including L.abour Welfare Cess.							623189.26		622636.81
	Add Contengency @3% Excluding Labour Cess							18510.57		18494.16
	Total Amount Including L.W.C. and contengency							641699.84		641130.97
								641700.00		641131.00
										641131.00
Say Rs.Six Lakh Forty One Tousand <del>One Hundred Thirty One</del> Only										

*21.02.25*  
Junior Engineer  
Jalpaiguri Division M.E.Dte.

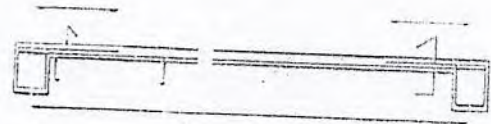
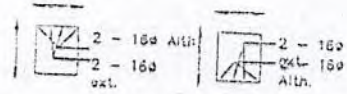
*21/02/25*  
Assistant Engineer  
Jalpaiguri Division M.E.Dte.

*[Signature]*  
Chairman  
Haldibari Municipality

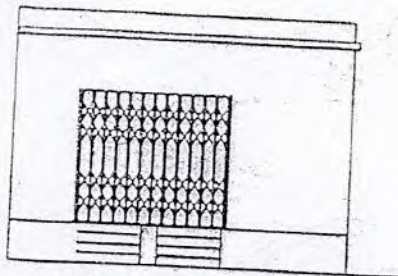
*[Signature]*  
Sub-Assistant Engineer,  
Haldibari Municipality  
Haldibari, Cooch Behar

*[Signature]*  
*21/02/25*  
Executive Engineer  
Jalpaiguri Division M.E. Dte

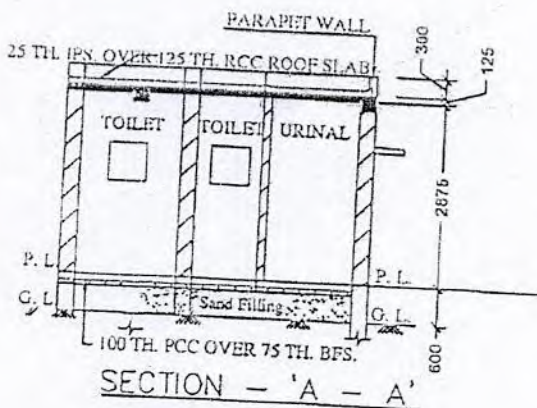
MODEL DRAWING FOR CONSTRUCTION OF C. T./P.T.  
TOILET SEATS 2 NOS URINAL 3 NOS  
MODEL NO.- F



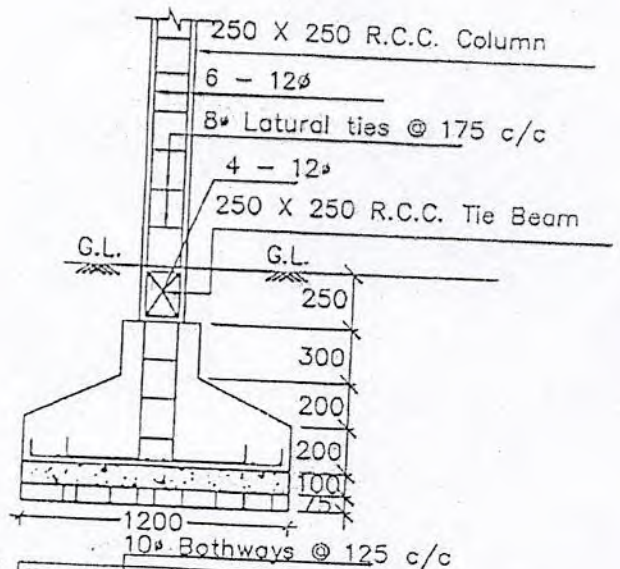
Details Of R.C.C Roof Slab & Beam  
(SCALE - 1 : 25)



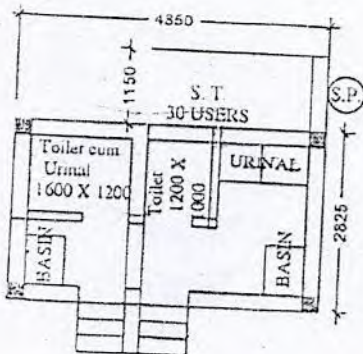
FRONT ELEVATION



SECTION - 'A - A'



DETAILS OF R. C. C COLUMN  
(SCALE - 1 : 25)



Checked & Verified

*Prabir Mukhopadhyay*  
Engineer (Civil)  
HILL INSPIRATION

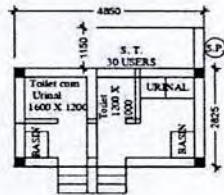
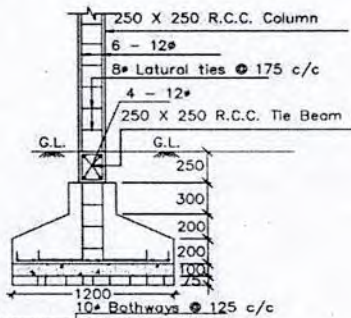
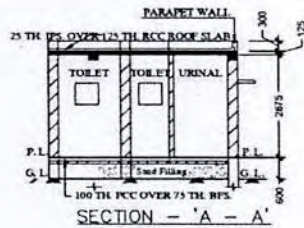
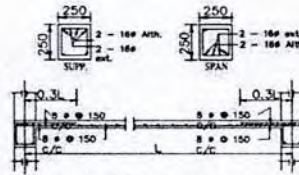
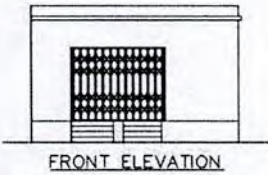


*Hakim*



Latitude: 26.334764  
 Longitude: 88.779817  
 Elevation: 75.338 m  
 Accuracy: 5.5 m  
 Time: 19-12-2024 12:13

MODE DRAWING FOR CONSTRUCTION OF C. T./P.T.  
 TOILET SEATS 2 NOS URINAL 3 NOS  
 MODLE NO.- F



*[Signature]*  
 Sub-Assistant Engineer  
 Haldibari Municipality  
 Haldibari, Cooch Behar

*[Signature]*  
 Chairman  
 Haldibari Municipality

Construction of public toilet (PT) at Babu Para stadium, Ward-7

**CONSTRUCTION OF PUBLIC TOILET(PT) AT BABU PARA STADIUM WITHIN HALDIBARI MUNICIPALITY, WARD  
NO-7 (MODEL-F)**

Non Schedule Items that may required in preparation of CT/PT estimates

SL.NO	Description of Items		Quantity	Rate(Rs)	Amount(Rs)	
1	Standard plastic Dustbin ( 12 lits )	Each	24	350	700.00	1400.00
2	Sinage ACP based & Reflecive vinyl	Each	51	3776	18880.00	3776.00
3	Supplying & fixing sinage with fixing stand post for public toilet for visible to passersby	Each	5	1000	5000.00	
4	Glow sign board Name and contact details of the following are displayed prominently - Toilet identification number, name of ULB under whose jurisdiction toilet is covered, ward number and maintenance authority prominently displayed for each toilet block Supervisor, Supervisor's agency and area Sanitary Inspector	Each	1	5000	5000.00	
5	Installation of Sinage	Each	1	2071	2071.00	
6	Air Freshner ( Pack of 4 nos ) odonil	Each	65	216	1296.00	1080.00
7	Air Freshner ( Napthaline 250 gm )	Each	45	210	840.00	1050.00
8	Supplying paper Napkin	Each	45	50	200.00	250.00
9	Supplying Sanitary Napkin (whisper or other similar make)	Each	4	520	2080.00	
10	Harpic ( Blue 500 ml)	Each	34	300	900.00	1200.00
11	Harpic ( Red 500 ml)	Each	39	150	450.00	600.00
12	Gala double lip floor wiper	Each	4	350	1400.00	
13	Colin glass or surface cleaner	Litre	2	200	400.00	
14	Muriatic Acid	Litre	2	145	290.00	
15	Bleaching Powder	kg	4	120	480.00	
16	Dettol, Lifebuoy or similar make liquid soap	Litre	46	140	600.00	840.00
17	Rubber hand Gloves	Pair	64	80	480.00	320.00
18	Double Side plastic brush	Each	64	125	750.00	500.00
19	Plastic Broom	Each	4	170	680.00	
20	SMS/any other ICT based feedback system (with number displayed on which SMS has to be sent)	Each	1	5000	5000.00	
21	Mini Tulu pump	Each	1	4000	4000.00	
22	Supplying roaster/register for keeping account of regular cleaning (D1)	Each	2	200	400.00	
23	Lettering on toilet wall for display of name and contact details of ULB, Ward number and name of	Each	1	1000	1000.00	

**Total Amount** 52857.00 38817.00  
**Add !% Laour Welfare Cess** 528.57 388.17  
**Amount Including Labour Cess** 53385.57 39205.17  
**Add contigency 3%of Total Amount** 1585.71 1164.51  
**Amount Including Contigency** 54971.28 40369.68  
**54971.00 40370.00**

*Forty thousand three hundred seventy only*  
**Say Rs. Fifty-Four Thousand Nine Hundred Seventy one Only**

*[Signature]*  
 Junior Engineer  
 Jalpaiguri Division M. E. Dte.

*[Signature]*  
 Assistant Engineer  
 Jalpaiguri Division M. E. Dte

*[Signature]*  
 Executive Engineer  
 Jalpaiguri Division M. E. Dte

*[Signature]*  
 Chairman  
 Haldibari Municipality

*[Signature]*  
 Sub-Assistant Engineer  
 Haldibari Municipality  
 Haldibari, Coochbehar

NAME OF WORK:- ESTIMATE FOR ELECTRICAL WORK OF 2 SEATEDPUBLIC TOILET AT HALDIBARI BABU PARA STADIUM WITHIN HALDIBARI MUNICIPALITY WARD NO-7 ,WITHIN HALDIBARI MUNICIPALITY OF WEST BENGAL(MODEL-F){ASPIRATIONAL PARAMETER}

* As per PWD & I & WD schedule district charges will be applicable on PWD & I & WD schedule items							
* No district charges will be applicable on non-schedule items							
Sl No.	Item Description	Unit	Quantity	Rate	District Charge 10%	Rate with District Charge (Rs)	Amount(Rs)
1	Distribution wiring in 2 x 22/0.3 (1.5 sqmm) single core stranded 'FR' PVC insulated & unsheathed copper wire(Brand approved by EIC) in 20mm size PVC rigid conduit 'FR' (Precision make), with 1x22/0.3 (1.5 sqmm) single core stranded 'FR' PVC insulated & unsheathed copper wire for ECC, to light/fan/call bell points with Piano Key type switchfixed on MS CRC sheet metal (16 SWG) switch board cum JB on wall complete with 2 no. suitable size "Ph & N" copper bar incl. bakelite/Perspex (wall matching color) top cover 3 mm thick and incl. 175mmx100mmx65mm inspection box, making earthing attachment, painting the MS box and mending good the damages to original finish.(A)Average run 5 mtr [PWD Schedule Page No-E-14 Item No-2a]	Point	12	612.00	61.20	673.20	8078.40
2	Distribution wiring in 1.1 KV grade 22/0.3 (1.5 sqmm) single core stranded 'FR' PVC insulated & unsheathed copper wire (Brand approved by EIC) in 20mm size PVC rigid conduit 'FR' (Precision make), with 1.1 KV grade 1 x 22/0.3 (1.5 sqmm) single core stranded 'FR' PVC insulated & unsheathed copper wire as ECC, to 5A 3 pin flush type plug socket & Piano Key type switch fixed on MS CRC sheet metal (16 SWG) switch board cum JB on wall incl. bakelite/Perspex (wall matching color) top cover 3 mm thick and incl. painting the MS box and mending good the damages to original finish On Board (only for pay counter) [PWD Schedule Page No-E-15; I-4a]	Point	1	67.00	6.70	73.70	73.70
3	Supplying and fixing 240V 32A Double Pole AC Type 30mA RCCB.(Complete Set) (ISI marked) [Make- Legrand] (Cat No 4113/95) [ Legrand Page No-92 ]	Nos	1	5942.00		5942.00	5942.00
4	Distribution wiring in 1.1 KV single core stranded 'FR' PVC insulated & unsheathed copper wire (Brand approved by EIC) in 20mm size PVC rigid conduit 'FR' (Precision make) incl. necy. fittings as required 2 x 36/0.3 (2.5 sqmm) + 1 x 22/0.3 (1.5 sqmm) ECC [PWD Schedule Page No-E-14 Item No-1a(ii)]	mtr	12	119.00	11.90	130.90	1570.80
5	Supplying and fixing double-door SPN MCB Distribution Board with IP-42/43 protection, concealed in wall after cutting the wall & mending good the damages to original finish incl. Inter connection with suitable size of copper wire and neutral link & provision for earthing attachment. b) For (2+4 way) (Make -Havells)(above 6 seats)	No	1	935.00	93.50	1028.50	1028.50
6	Supplying and fixing 240/415 V MCB of Breaking capacity 10kA & C characteristics on din rail of existing DBs and necessary connection 6-32A SP MCB (Make -Havells) [PWD Schedule Page No-D-6;Item No-7]	Nos	4	168.00	16.80	184.80	739.20
7	Supplying and fixing 240/415 V MCB Isolator on din rail of existing DBs and necessary connection. 32A DP MCB Isolator (Make -Havells) [PWD Schedule Page No-D-5;Item No-6]	Nos	1	208.00	20.80	228.80	228.80
8	Supply of TMC501 conventional industrial batten (Philips make) LED Tube,model no-TMC501 P1xT-LED 22W P3241 (WB I & WD schedule P-113, I- 5:3 F.22)	Nos	3	451.00	13.53	464.53	1393.59
9	Fixing only single/twin fluroscnet light fitting complete with all accessories directly on wall/ceiling by screws etc.. [PWD Schedule Page No-C-2;Item No-14a]	Nos	3	86.00	8.60	94.60	283.80
10	Supply & fixing Bulk head light fittings with die cast aluminium housing frosted/clear glass on wall/ceiling incl S/F 9 watt LED Lamp complete set. [Make - Havells] (PWD sch - Page--D-13, I-23) (569+District Charge+75)	Nos	3	569.00	56.90	625.90	1927.70
11	Supply & fixing smart bright street light complete with all accessories to be fixed from the wall of building or on pole incl. making holes /providing clamping arrangement & necy. GI reducer as required.S&F 40 mm GI Pipe 1.5 mtr average length & s&f necy length of 1.5 sqmm pvc insulated single core copper wire & making connections as required & mending good damages incl wall paingting. (30 Watt) (Make - Bajaj) [WB I&WD sch P-111, I-f.9.0.2]	Nos	1	3016.00	90.48	3106.48	3106.48
12	Supply of 9" domestic metal exhaust fan 9" (225mm)SWEEP. TRANS AIR - ( Make-Crompton/Havells/Bajaj) (UD & MA schedule P-14, I-5))	Nos	3	1863.00	No District Charge	1863.00	5589.00

13	Fixing only exhaust fan after making hole in wall and making good damages and smooth cement finish etc. as practicable as possible and providing necy. length of PVC insulated wire and making connection for exhaust of following diameter: 22.5 cm (9") [PWD Schedule Page No-C-4;Item No-28(b)]	Nos	3	247.00	24.70	271.70	815.10
14	Fixing only louver shutter/cowl on wall with necy. bolts & nuts (6 mm dia x 62 mm long) For 22.5 cm(9") Exhaust fan [PWD Schedule Page No-C-4;Item No-28(b)]	Nos	3	82.00	8.20	90.20	270.60
15	Supply of 240V A.C Ceiling Fan ( 48" sweep,1200 mm complete) [Make-Crompton [ for counter only] (UD & MA schedule P- 23, I- 70)	Each	1	2283.00	No District Charge	2283.00	2283.00
16	Fixing only Ceiling Fan [PWD sch P- C-3, I-21(a)]	Each	1	66.00	6.60	72.60	72.60
17	Supply & Fixing 240 V, 16/20 A Piano key type switch (Brand approved by EIC) on sheet metal switch board incl. S & F 100x100x65mm MS (16SWG) switch board and bakelite/perspex top cover of 3mm thick by Brass screws after making housing for switch by cutting bakelite/perspex cover and making necessary connections as required. (For Hand Dryer machine) [PWD sch P- E-6, I-17(b)]	Each	2	201.00	20.10	221.10	442.20
18	S/F 240V 25A Modular type starter (brand approved by EIC)with 25 A. Modular switch DP MCB (C-Curve)and 4 Module G.I. Moduar type switch board with 4 Module Top Cover Plate flushed in wall incl. S/F switch board and Cover Plate and making necy. Connections with PVC Copper wire and earth connectivity wire etc. as per schedule [for Pump] [PWD Schedule Page No-E-19, Item No-17] (Please follow in details)	Nos	1	784.00	78.40	862.40	862.40
19	Supply and Fixing of 2 mm Polyvinyl glow sign board made of 22 SWG GI sheet box with 1"X1" aluminum channel for fixing the vinyl board after necessary cutting the letter as required & s/f LED tube light fittings along with all accessories. (16 sqft @495.00/sqft) (UD & MA schedule P-14, I-4)	Nos	1	7920.00	No District Charge	7920.00	7920.00
20	Earthing installation by GI earth Spike (1830 X 20 mm) including 8SWG GI EarthWire & GI nuts, bolts, washer etc.	Nos	1	450.00	No District Charge	450.00	450.00
			Total				43285.87
			Add 18% GST				7791.46
			Total With GST (A)				51077.33
			Cess@1%				510.77
			total				51588.10
			Contingency Amount on "A"		Contingency@3%		1532.32
			(Total+GST)=Rs:		Total		53120.42
			Say Rs.				53120.00
Service Connection Charges as per Quotation							

Say Rs. 53,120.00

*[Signature]*

Sub-Assistant Engineer  
Haldibari Municipality  
Haldibari, Cooch Behar

*[Signature]*  
Chairman  
Haldibari Municipality

Technically Vetted Rs. 53,120.00  
(Rupees Fifty three thousand one hundred twenty only.)

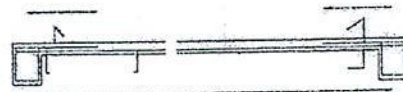
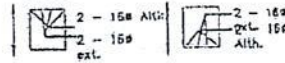
*[Signature]*  
20.03.25  
Junior Engineer  
Electrical & Mechanical Division  
SUDA

*[Signature]*  
20.3.25  
ASSISTANT ENGINEER  
ELECTRICAL & MECHANICAL DIVISION  
SUDA

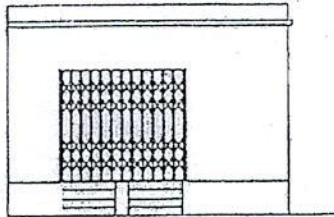
*[Signature]*  
21/3/25  
Executive Engineer (E/M)  
O/O the Secretary M.E. Dte.  
Government of West Bengal

MODEL DRAWING FOR CONSTRUCTION OF C. T./P.T.  
TOILET SEATS 2 NOS URINAL 3 NOS

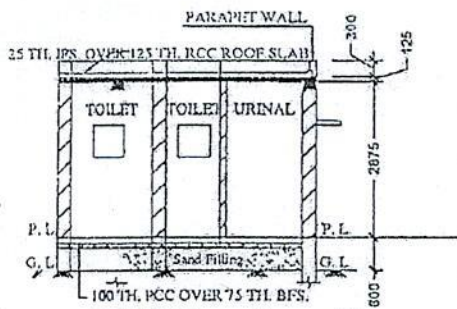
MODEL NO. - F  
**BABU PARASTADIUM - W/7.**



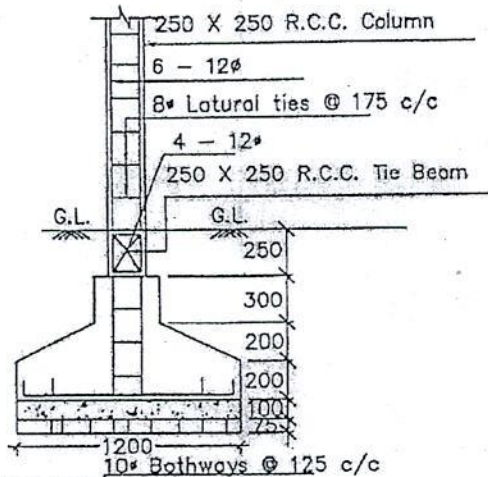
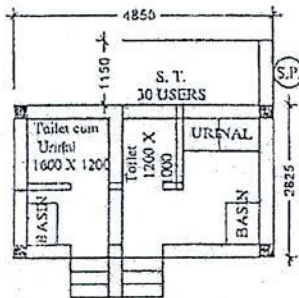
Details Of R.C.C Roof Slab & Beam  
(SCALE - 1 : 25)



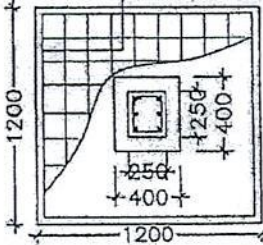
FRONT ELEVATION



SECTION - 'A - A'



DETAILS OF R. C. C COLUMN  
(SCALE - 1 : 25)



- BULK HEAD LIGHT → 03
- TUBE LIGHT → 03
- EXHAUST FAN → 03
- OUTDOOR LIGHT → 01
- CEILING FAN → 01
- GLOW SIGN BOARD → 01

Checked & Verified  
*Pradeep Kumar Singh*  
 Engineer (Civil)  
 Haldibari Municipality  
 Haldibari, Cooch Behar

*[Signature]*  
 Chairman  
 Haldibari Municipality



*[Signature]*  
 Sub-Assistant Engineer  
 Haldibari Municipality  
 Haldibari, Cooch Behar

12 p/s