

**Civil & Sanitary Work Estimate (A) For Construction of the Public Toilet Block
for Children Parkat ward no-02 under Dinhata Municipality. (Model 'G')**

No. Of seat - Male - (W.C. -2 + Urinal -3) & Female - (W.C. -2 + Urinal -2) = Total (W.C. -4 & Urinal -5)

Rate As per PWD Building Works Schedule (Volume 1) With effect from 01.11.2017

Sl No	Item Description & Item No.							Quantity	Rate	Unit	Amount
	Details	Side	No.	L	B	H	QNTY.				
1	Earth work in excavation of foundation trenches or drains, in all sorts of soil (including mixed soil but excluding laterite or sandstone) including removing, spreading or stacking the spoils within a lead of 75 m. as directed. The item includes necessary trimming the sides of trenches, levelling, dressing and ramming the bottom, bailing out water as required complete. (a) Depth of excavation not exceeding 1,500 mm. PWD Building Works schedule Page - 1, Item -2.a							11.37	11927.00	%Cum	1356.10
	Col										
	wall	6	1	1.2	1.2	1.13	9.76				
		3	1	4.05	0.25	0.25	0.76				
		2	1	1.85	0.25	0.25	0.23				
	Stair	2	1	2.5	0.25	0.25	0.31				
		1	1	2.25	0.75	0.18	0.3				
							11.37				
2	Earth work in filling in foundation trenches or plinth with good earth, in layers not exceeding 150 mm. including watering and ramming etc. layer by layer complete. (Payment to be made on the basis of measurement of finished quantity of work). (a) With earth obtained from excavation of foundation. PWD Building Works schedule, Page - 1, Item -3.a							7.58	322.00	Sqm	2440.76
	2/3 of item no 01							0.67	11.37		7.58
3	(A) Filling in foundation or plinth by silver sand in layers not exceeding 150 mm as directed and consolidating the same by thorough saturation with water, ramming complete including the cost of supply of sand. (payment to be made on measurement of finished quantity) PWD Building Works schedule, Page - 2, Item -4.a							8.89	43131.00	%Cum	3834.35
	Toilet, urinal	2	1	1.6	1.2	0.6	2.3				
		2	1	1	1.2	0.6	1.44				
		1	1	2.73	2.13	0.6	3.49				
		1	1	1.73	0.53	0.6	0.55				
		1	1	1.85	1	0.6	1.11				
							8.89				
4	Single Brick Flat Soling of picked jhama bricks including ramming and dressing bed to proper level and filling joints with local sand. PWD Building Works schedule, Page- 14, Item - 1 (Corri. Page-01, Date-04-06-2018)							33.53	322.00	Sqm	10796.66
	Col	6	1	1.2	1.2		8.64				
	Stair	1	1	2.25	0.75		1.69				
	Floor	1	1	5.1	4.55		23.21				
							33.53				
5	Cement concrete with graded jhama khoa (30 mm size) excluding shuttering in ground floor and foundation. (a) 1:3:6 proportion. PWD Building Works schedule, Page -23, Item-8.1.a, (Corri. Page- 09, Date-04-06-2018) Rate Analysis1 (Corri. Page-01, Date-04-06-2018)							3.35	3261.05	Sqm	10924.52
	Col	6	1	1.2	1.2	0.1	0.86				
	Stair	1	1	2.25	0.75	0.1	0.17				
	Floor	1	1	5.1	4.55	0.1	2.32				
							3.35				

Ordinary Cement concrete (mix 1:1.5:3) with graded stone chips (20 mm nominal size) excluding shuttering and reinforcement, if any, in ground floor as per relevant IS codes.
 a) Pakur Variety / Chandil Variety
 PWD Building Works schedule, p. 26 Item 10 a (Rate Analysis)

11.24	6048.75	Cum	67987.95
-------	---------	-----	----------

Footing	6	1	12	12	0.2	1.73
O Sx(1 2x1 2)+(4x 4)=0.8	6	1	0.8		0.2	0.96
Tie beam	6	1	0.4	0.4	0.3	0.29
Part Beam	3	1	4.55	0.25	0.25	0.85
Part Beam	1	1	1.2	0.25	0.25	0.08
Tie beam	1	1	1.6	0.25	0.25	0.1
Tie beam	2	1	1.85	0.25	0.25	0.23
Part Beam	2	1	2.5	0.25	0.25	0.31
Part Beam	1	1	1.85	0.25	0.25	0.12
	1	1	1.2	0.25	0.25	0.08
Col	1	1	2.5	0.25	0.25	0.16
Lintel	6	1	0.25	0.25	3.35	1.26
	2	1	1.85	0.25	0.2	0.19
	2	1	2.5	0.25	0.2	0.25
	3	1	4.05	0.25	0.2	0.61
	1	1	1.85	0.13	0.2	0.05
	2	1	1.2	0.13	0.2	0.06
	1	1	2.5	0.13	0.2	0.07
Chazza	1	1	1.6	0.13	0.2	0.04
Roof beam	4	1	0.5	0.45	0.1	0.09
	2	1	1.85	0.25	0.13	0.12
	2	1	2.5	0.25	0.13	0.16
Roof Slab	3	1	4.55	0.25	0.13	0.44
	1	1	5.1	4.55	0.13	3.02

7
 25mm. thick damp proof course with cement concrete with stone chips (1:1.5:3) [with graded stone aggregate 10 mm nominal size] and admixture of water proofing compound as per manufacturer's specification followed by two coat of polymer based paint, (1st coat after 4 to 5 days of concrete laying and 2 nd coat just before brick masonry work) as directed (cost of water proofing compound & polymer based paint to be paid separately). (Chequering not required over concrete or painted surface). [Note:
 - Waterproofing as per item 9, polymer based paint as per item 8
 (a) of subhead C of Section (CJ).
 PWD Building Works schedule, Page -47, Item -1 (Rate Analysis)
 $2 \times 7.375 \times 0.250 = 3.69$ m^2 $3 \times 3.250 \times 0.250 = 2.44$

6.30	203.00	Sqm	1278.90
------	--------	-----	---------

Tie beam	2	1	1.85	0.25		0.93
	2	1	2.5	0.25		1.25
	3	1	4.05	0.25		3.04
Part Beam	1	1	1.85	0.13		0.24
Part Beam	2	1	1.2	0.13		0.31
	1	1	2.5	0.13		0.33
	1	1	1.6	0.13		0.21
						6.3

8
 125 mm brick work with 1st class bricks in cement mortar (1:4) in ground floor.
 PWD Building Works schedule, Page -16, Item-16, cori page -3, date -04.06.2018 (Rate Analysis)

18.34	666.27	Sqm	12219.39
-------	--------	-----	----------

Partition wall r3- 125-.2=2.68)	1	1	1.6		2.68	4.29
Less Door	2	1	1.2		2.68	6.43
	1	1	2.5		2.68	6.7
	1	1	18.8		0.3	5.64
Parapet wall						23.06
Deduction						
Door	3	1	0.75		2.1	-4.73
						18.34

9
 Supplying and laying polythine sheet (150 gm/sq.m) over damp proof course or below flooring or roof terracing or foundation or foundation trenches. PWD Building Works schedule, Page -47, Item-3

23.21	24.00	Sqm	557.04
-------	-------	-----	--------

1	1	5.1	4.55		23.21
---	---	-----	------	--	-------

10	Hire and labour charges for shuttering with centering and necessary staging upto 4 m using approved stout props and thick hard wood planks of approved thickness with required bracing for concrete slabs, beams and columns, lintels curved or straight including fitting, fixing and striking out after completion of works (upto roof of ground floor) (f) 25 mm to 30 mm shuttering without staging in foundation PWD Building Works schedule, Page -42, Item- 36 f						31.72	205.00	Sqm	6502.60
	Footin_g	6	4	12	0.3	8.64				
	Col	6	4	0.4	0.3	2.88				
	Col(GI to Pl)	6	4	0.25	0.6	3.6				
	Tic beam	2	2	1.85	0.25	1.85				
	Tic beam	3	2	2.5	0.25	3.75				
		3	2	4.55	0.25	6.83				
	Part Beam	1	2	1.85	0.25	0.93				
	Part Beam	2	2	1.2	0.25	1.2				
	Part Beam	1	2	2.5	0.25	1.25				
		1	2	1.6	0.25	0.8				
						31.72				
11	Hire and labour charges for shuttering with centering and necessary staging upto 4 m using approved stout props and thick hard wood planks of approved thickness with required bracing for concrete slabs, beams and columns, lintels curved or straight including fitting, fixing and striking out after completion of works (upto roof of ground floor) (a) 25 mm to 30 mm thick wooden shuttering as per decision & direction of Engineer-in-Charge. PWD Building Works schedule, Page -42, Item- 36.a						65.02	328.00	Sqm	21326.56
	Column	6	4	0.25	2.75	16.5				
	L.intel	3	2	4.05	0.2	4.86				
	L.intel	2	2	1.85	0.2	1.48				
		2	2	2.5	0.2	2				
	Partition wall	1	2	1.85	0.2	0.74				
		1	2	2.5	0.2	1				
		2	2	1.2	0.2	0.96				
		1	2	1.6	0.2	0.64				
	Oocnning									
	Window	4	1	0.45	0.25	0.45				
	Door	2	1	1.05	0.25	0.53				
		3	1	0.75	0.13	0.29				
	Chazza	4	1	0.5	0.45	0.9				
		4	1	1.4	0.1	0.56				
	Roof beam	4	1	4.55	0.13	2.37				
		2	1	1.85	0.13	0.48				
		2	1	2.5	0.13	0.65				
	Outer side	1	1	19.3	0.25	4.83				
	Roof Slab	1	1	7.37	3.5	25.8				
						65.02				
12	Artificial stone in floor ,dado, staircase etc with cement mortar (1:2:4)with stone chips lised in panels as directed with topping made with ordinary or white cement (as necessary) and marbel dust in proportion (1:2) in eluding smooth finishing and rounding off corners including raking out joints or roughening of concrete surface and application of cement slurry before flooring works using cement@ 1.75 kg/sq.mall complete including all materials and labour. In ground floor 3 mm thick topping using gray cement (ii)25 mm PWD Building Works schedule, p-48 Item 6(ii)						23.21	280.00	Sqm	6498.80
	Roof	1	1	5.1	4.55	23.21				
13	Reinforcement for reinforced concrete work in all sorts of structures including distribution bars, stirrups, binders etc initial straightening and removal of loose rust (if necessary), cutting to requisite length, hooking and bending to correct shape, placing in proper position and binding with 16 gauge black annealed wire at every intersection, complete as per drawing and direction. (a) For works in foundation and upto roof of ground floor/upto 4 m. (i) Tor steel/Mild Steel, JSPL/SWAYN/ELETRO/STEEL PWD Building Works schedule, Page - 43, Item - 40 a.i.1(Corri. 10th Page-01, Date-23- 01-2020) (Rate Analysis)						1.059	59241.18	M.T.	62736.41
	1.20% of item no 06			1.20%	11.24	7.85	1.0591			

14	Collapsible gate with 40 mm x 10 mm x 6 mm Tee as top and bottom guide rail, 20 mm x 10 mm x 2 mm vertical channels 100 mm apart in full stretched position 20m x 5 mm MS flats as collapsible bracings properly reveted and washed including 38 mm steel roller including locking arrangements, fitted and fixed in position with lugs set in cement concrete including cutting necessary hives chasing etc in walls, floors etc and making good all damages. PWD Building Works schedule, Page -106, Item- .18						4.200	4351.00	Sqm	18274.20
15	Brick work with 1st class bricks in cement mortar (1:4) (a) Foundation and plinth ground floor PWD Building Works schedule Page 11e -15 Item-7.a (Rate Analysis)						4.36	4849.48	Cum	21143.73
	Tie beam to olinth									
		1	3	4.05	0.25	0.6	1.82			
		1	2	1.85	0.25	0.6	0.56			
		1	2	2.5	0.25	0.6	0.75			
	Partition wall(600-250=350)	1	1	1.85	0.25	0.35	0.16			
		1	1	2.5	0.25	0.35	0.22			
	Stair	1	2	1.2	0.25	0.35	0.21			
		1	1	1.6	0.25	0.35	0.14			
		1	1	2.25	0.75	0.15	0.25			
		1	1	2.25	0.5	0.15	0.17			
		1	1	2.25	0.25	0.15	0.08			
							4.36			
16	Brick work with 1st class bricks in cement mortar (1:4) (b) superstructure ground floor PWD Building Works schedule, Page -15, Item-7.b (Rate Analysis)						11.92	5072.48	Cum	60463.96
	3.0-0.25-0.2=2.55	1	3	4.05	0.25	2.55	7.75			
		1	2	1.85	0.25	2.55	2.36			
		1	2	2.5	0.25	2.55	3.19			
	Deduction						13.29			
	Window	4	1	0.45	0.25	0.6	-0.27			
	Door	2	1	1.05	0.25	2.1	-1.1			
							-1.37			
							11.92			
17	Labour for Chipping of concrete surface before taking up Plastering work. PWD Building Works schedule, P-192, It-1						66.77	21.00	Sqm	1402.17
	Col		4	0.25		3.35	20.1			
	Lintel		2	4.05		0.2	4.86			
	Lintel		2	1.85		0.2	1.48			
			2	2.5		0.2	2			
	Partition wall		2	1.85		0.2	0.74			
	Part-tition wall		2	2.5		0.2	1			
			2	1.2		0.2	0.96			
			2	1.6		0.2	0.64			
	Below opening									
	Window		1	0.45		0.25	0.45			
	Door		1	0.75		0.13	0.39			
			1	1.05		0.25	0.53			
	Chazza		2	0.45		0.5	1.8			
	Side	4	1	1.4		0.1	0.56			
	Roof beam	2	1	4.55		0.25	2.28			
		2	1	5.1		0.25	2.55			
	In side	2	2	4.05		0.13	2.11			
	In side	2	1	1.85		0.13	0.48			
		2	1	2.5		0.13	0.65			
	Slab	1	1	5.1		4.55	23.21			
							66.77			

18	Plaster (to wall, floor, ceiling etc.) with sand and cement mortar including rounding off or chamfering corners as directed and raking out joints including throating, nosing and drip course, scaffolding/staging where necessary (Ground floor). [Excluding cost of (c) 15 mm thick plaster PWD Building Works schedule, P-189 It- No. 1 (Rate Analysis)						115.33	138.46	Sqm	15968.59
	Outer side	1	2	4.55	3.9	35.49				
	Chazza	1	2	5.1	3.9	39.78				
		4	1	0.45	0.5	0.9				
		4	1	1.4	0.1	0.56				
	In side 3.0-0.125-2.1=0.78	4	1	4.05	0.78	12.64				
		2	1	1.86	0.78	2.9				
	Partition wall	2	1	2.5	0.78	3.9				
		1	2	1.86	0.78	2.9				
		1	2	2.5	0.78	3.9				
		2	2	1.2	0.78	3.74				
	Parapet wall	1	2	1.6	0.78	2.5				
		1	2	4.98	0.13	1.29				
	In side	1	2	4.43	0.13	1.15				
		1	2	4.85	0.3	2.91				
		1	2	4.3	0.3	2.58				
						117.15				
	Deduction	4	1	0.45	0.6	1.08				
		2	1	1.05	2.1	4.41				
						5.49				
	1/3 of the opening			0.33	5.49	1.81				
						115.33				
19	Plaster (to wall, floor, ceiling etc.) with sand and cement mortar including rounding off or chamfering corners as directed and raking out joints including throating, nosing and drip course, scaffolding/staging where necessary (Ground floor). [Excluding cost of chipping over concrete surface] (ii) With 1 cement mortar (c) 10 mm thick plaster PWD Building Works schedule, P-189 It-No. 1 (ii)(c) (Rate Analysis)						19.53	123.46	Sqm	2411.17
	Chazza	4	1	0.45	0.5	0.9				
	Slab	1	1	4.6	4.05	18.63				
						19.53				
20	Neat cement punning about 1.5 mm thick in wall, dado, window sills, floors etc. Note cement 0.152 m3/100 m2 PWD Building Works schedule, P-192 It- No. 15						11.58	32.71	Sqm	378.78
		1	1	19.3	0.6	11.580				

21	Supplying, fitting and fixing fibre reinforced polymer (FRP) Composite door frame as per approved section with glass fibre reinforced plastic moulded skins and a special sandwich core, so as to impart monolithic composite structure as per approved technology of Department of Science and Technology (DST) to satisfy IS: 4020 door testing performance criteria. (i) 66mm x 90mm PWD Building Works schedule, P-115, It-3 (j)	4	1	4.950	19.80	497.00	mtr	9840.60
22	Supplying, fitting & fixing fibre reinforced polymer (FRP) Composite door shutters as per approved design with glass fibre reinforced plastic moulded skins and a special sandwich core, so as to impart monolithic composite structure as per approved technology of Department of Science and Technology (DST) to satisfy IS:4020 door testing performance criteria. In ground floor. ii) 25 mm thick P-125, It- 14(ii)	4	1	4.950	5.03	2581.00	Sqm	12982.43
23	Anodised aluminium barrel /tower/ socket bolt (full covered) of approved manufactured from extruded section conforming to I.S. 204/74 fitted and fixed with cadmium plated screws. (vii) 225mm long x 10mm dia. bolt. PWD Building Works schedule, P-144, It No. 26 (vii)	4	1	0.62	5.00	84.00	Each	420
24	Iron butt hinges of approved quality fitted and fixed with steel screws, with ISI mark. (viii) 100mm X 75mm X 3.50mm. PWD Building Works schedule, P-140, It No. -5 (viii)				15.00	66.00	Each	990.00
25	Anodised aluminium decorative handle (hexagonal/ fluted) of approved quality fitted and fixed complete. (i) 150mm plate x 10mm dia rod x 12mm hexagonal/fluted. PWD Building Works schedule, Page -146 . Item no-31,(i)				10.00	87.00	Each	870.00
26	Iron hasp bolt of approved quality fitted and fixed complete (oxidised) with 16mm dia rod with concrete bolt and round fitting. .b)250mm long. PWD Building Works schedule, Page -141. Item no-10 b)				5.00	159.00	Each	795.00
27	Supplying and laying chequered tiles of any shade and of approved quality with (1:1.5:3) cement concrete laied in pannels or patterns as directed in pavement ,footpath etc including necessary underlay 25 mm thick (avg)cement mortar (1:3) complete in all respect with all labour and materials. (Using cement slurry @4.4kg/sq.m at back side and @2.4 kg/sq.m for joint filling). PWD Building Works schedule, Page -74, Item no- 46(i). 25 mm thick	4	1	2.25	3.49	471.00	Sqm	1643.79
		3	1	2.25				
		1	2	0.25				
		1	2	0.5				
		1	2	0.75				
28	Rendering the Surface of walls and ceiling with White Cement base WATER PROOF wall putty of approved make & brand.(1.5 mm thick) In Ground Floor PWD Building Works schedule, PWD, P- 198, I- 5				123.28	122.00	Sqm	15040.16
	Same as item no 18 +19-20			115.33	19.53	11.58		123.28
29	Applying interior grade Acrylic Primer of approved quality and brand on plastered and concrete surface old or new surface to receive Distemper Acrylic emulsion paint including scraping and preparing the surface thoroughly, complete as per manufacturer's specification and as per direction of the E-1-C (Ground Floor) (b) Two Coats PWD Building Works schedule, Page -74, Item no- 46(i).				51.08	81.00	Sqm	4137.48
	In side	4	1	4.05		0.78		12.64
		2	1	1.85		0.78		2.89
	3.0-0.125-2.1=0.78	2	1	2.5		0.78		3.9
		1	2	1.85		0.78		2.89
		2	2	1.2		0.78		3.74
		1	2	2.5		0.78		3.9
		1	2	1.6		0.78		2.5
	Slab	1	1	4.6		4.05		18.63

877.00

3060.73

44.20

2257.79

30	Dry Destempering internal walls or ceiling including cleaning, washing, smoothening surface (b) two coats PWD Building Works schedule, Page -196, Item no- 9(b).	51.08	49.00	Sqm	2502.92	
31	Applying exterior grade Acrylic Primer of approved quality and brand on plastered or concrete surface old or new surface to receive Decorative Textured (Marrr Finish) or Smooth Finish Acrylic exterior emulsion paint including scraping and preparing the surface thoroughly, complete as per manufacturer's specification and as per direction of the EIC in Ground Floor (b) two coats. PWD Building Works schedule, Page-196, Item no- 8(b)	77.96	45.10	Sqm	3516.00	
	Outer side	1	2	5.1	3.6	36.72
	Chazza	1	2	4.55	3.6	32.76
		4	2	0.45	0.5	1.8
	Parapet wall	4	1	1.4	0.1	0.56
		1	2	4.98	0.13	1.29
	In side	1	2	4.43	0.13	1.15
		1	2	4.85	0.3	2.91
		1	2	4.3	0.3	2.58
						79.78
	Deduction	4	1	0.45	0.6	1.08
		2	1	1.05	2.1	4.41
						5.49
	1/3 of the ooenine:			0.33	5.49	1.81
						77.96
32	Protective and Decorative Acrylic Exterior emulsion paint of approved quality, as per manufacturer's specification and as per dirction of EIC to be applied overf Acrylic primer as required. The rate includes cost of materials, labour, scaffolding and all incidental charges but excluding the cost of primer in ground floor (two coats)(a) normal acrylic emulsion. PWD Building Works schedule, Page - 197, Item no-17(a) 1)	77.96	67.00	Sqm	5223.32	
33	(b) Priming one coat on timber or plastered surface with synthetic oil bound primer of approved quality including smoothening surfaces by sand papering etc. PWD Building Works schedule, Page -200 . Item no- 1 (b)	6.35	29.00 38.00	Sqm	-184.15 241.30	
34	(A) Painting with best quality synthetic enamel paint of approved make and brand including smoothening surface by sand papering etc. Including using of approved putty etc. on the surface, if necessary : Page - 200 . Item no- 1 (b) (a) On timber or plastered surface: With super gloss (hi-gloss) . (iv) Two coats (with any shade except white) PWD Building Works schedule, Page -200. Item no- 2(A)(a)(iv)	6.35	-79.00 81.00	Sqm	501.65 514.35	
35	(a) M.S. or W.I. Ornamental grill of approved design joints continuously welded with M.S, W.I. Flats and bars of windows, railing etc. fitted and fixed with necessary screws and lugs in ground floor. (i) Grill weighing above 10 Kg./sq.mtr and up to 16 Kg./sq. mtr. PWD Building Works schedule, P-104 Item-13 A (i) (3rd Corrigendam Page No 91)	0.52	10021.00	qntl.	5210.92	
	Pump House	6	1	0.6	0.6	2.16
	Window	4	1	0.45	0.6	1.08
						3.24
				3.24	16	51.84
						0.52
36	a) Priming one coat on steel or other metal surface with synthetic oil bound primer of approved quality including smoothening surfaces by sand papering etc. PWD Building Works schedule, P/200 Item-l(a)	3.24	29.00	Sqm	93.96	
	Quantity from item no35			3.24	3.24	
	Quantity from item no14			4.2	1.5	0
						3.24
37	(A) Painting with best quality synthetic enamel paint of approved make and brand including smoothening surface by sand papering etc. including using of approved putty etc. on the surface, if necessary : (b) On steel or other metal surface: (iv) Two coats (with any shade except white) PWD Building Works schedule, P-200 Item-2(b)(iv)	3.24	79.00	Sqm	255.96	

38	<p>Supplying and laying true to line and level vitrified tiles of approved brand (size not less than 600 mm X 600 mm X 10 mm thick) in floor, skirting etc. set in 20 mm sand cement mortar (1:4) and 2 mm thick cement slurry back side of tiles using cement @ 2.91 Kg/sqM or using polymerised adhesive (6 mm thick layer applied directly over finished artificial stone floor/Mosaic etc without any backing course) laid after application slurry using 1.75 Kg of cement per sqM below mortar only, joints grouted with admixture of white cement and colouring Pigment to match with colour of tiles/ epoxy grout materials of approved make as directed and removal of wax coating of top surface of tiles with warm water and polishing the tiles using soft and dry cloth upto mirror finish complete including the cost of materials, labour and all other incidental charges complete true to the manufacturer's specification and direction of Engineer-in-Charge. (White cement, synthetic adhesive and grout material to be supplied by the contractor)</p> <p>i) With application slurry @ 1.75 kg/ Sq.m, 20 mm sand cement mortar (1:4) & 2 mm thick cement slurry at back side of tiles, 0.2 kg/ Sq.m white cement for joint filling with pigment.</p> <p>(A) Deep Colour & White</p> <p>PWD Building Works schedule, Page-66 Item-36 (A) (3rd Floor</p>	35.24	1688.00	Sqm	59485.12				
	Floor	2	1	4.05	1.85	14.99			
	Floor	2	1	4.05	2.5	20.25			
						35.24			
39	<p>Supplying, fitting & fixing 1st quality Ceramic tiles in walls and floors to match with the existing work & 4 nos. of key stones (10mm) fixed with araldite at the back of each tile & finishing the joints with white cement mixed with colouring oxide if required to match the colour of tiles including roughening of concrete surface, if necessary or by synthetic adhesive & grout materials etc.</p> <p>B) Wall</p> <p>Area of each tile above 0.09 Sq.m</p> <p>ii) Other than Coloured decorative including white</p> <p>PWD Building Works schedule, page-64, Item:35.(B.) (b).(iii) (3rd Corrigendum ,Page 36)</p>	85.17	1036.00 4047.00	Sqm	89172.99 88236.12				
	In side	4	1	4.5	2.1	37.8			
		4	1	1.85	2.1	15.54			
		2	2	1.2	2.1	10.08			
		2	1	1.6	2.1	6.72			
		4	1	2.5	2.1	21			
						91.14			
	Deduction(Window)	4	1	0.45	0.6	1.08			
	Door	2	1	1.05	2.1	4.41			
	Door	4	2	0.75	2.1	12.6			
						18.09			
	1/3 of the opening			0.3	18.09	5.97			
						85.17			
40	<p>Supplying profiles of required section made of Aluminium Alloy Extrusions conforming to IS: 732-1983 and IS: 1285- 1975; Anodized (with required film thickness and specified colour / natural) matt finished conforming to IS: 1868-1983 for fabrication of composite door, sliding & casement windows, partitions, formed of basic sections of any ISI embossed / certified make and brand as per direction of Engineer - In-Charge. (Payment will be made on finished length of the work). (A) In 10-12 Micron thickness Anodizing film i) Natural white h) Louvered window. i) Top, bottom and side member.</p> <p>PWD Building Works schedule, PWD, P-233, I- 1(h) i</p>	8.40	183.00	M	1537.20				
		4	1	2.1		8.400			
41	ii) Louvered Section.				4.80	658.00	M	3158.40	
		4	2	0.6		4.800			
42	iii) Cleat angle (Non-anodized).				6.40	263.00	M	1683.20	
		4	4	0.4		6.400			

43	Labour charge for fabrication and installation of composite door, window, partitions made from anodized extruded alloy aluminium sections for the following units - (A) Glazed aluminium sliding windows made of extruded and anodized alloy aluminium sections, including cutting to proper shape and size, drilling and aligning of window shutter frame and joineries along with extruded neoprene or EPDM gasketing in between window frame and masonry work (walls, column, beam lintels etc.) as well as between glass and shutter frame for fixing glass and requisite size and fixing glass as per drawing, specification and direction of EIC. The rate includes the hire charge of all tools and plants, including all incidental charges, adhesive, joineries such as screw, cleat arrangement and rollers. v) Louvered window. PWD Building Works schedule SOR, PWD, P-239, I-2 (v)	1.08	730.00	Sqm	788.40	
		4	1	0.45	0.6	1.080
44	Supplying bubble free float glass of approved make and brand conforming to IS: 2835-1987. iv) 5mm thick coloured / tinted / smoke glass. PWD Building Works schedule, P-243, I-9	1.08	585.00	Sq.M.	631.80	
		4	1	0.45	0.6	1.080
45	Painting block letters or digits in Black Japan or any approved paint as per direction. above 7.5 cm. and upto 10 cm. PWD Building Works schedule, P-268, It-17(e)	e) Size 450.00	12.00	Each	5400.00	
46	Supplying and planting of different plants/ trees (supplying well grown plants bushy and healthy, minimum height as specified i.e. exposed height including all leads and lifts, carriage, handling, manuring applying pesticide and fertilizer etc. i) Furcaria Veriegated 10 to 12 leaves in height 20-30 cm in earthen pot of size 25 cm	10.00	162.00	Each	1620.00	
47	x) Ficus blakii (F. Vivicon) well branched (Bushy) of height 120cm - 135 cm in earthen 47 pot of size 30cm. PWD Building Works schedule, Page -261, It- 9 (x)	3	187.00	Each	561.00	
48	xxvi) Areca Palm 4 - 5 suckers of height 90 cm to 105 cm in earthen pots of size 25 cm. PWD Building Works schedule, Page -261, It- 9 (xxvi)	3	127.00	Each	381.00	
SANITARY AND PLUMBING WORKS						
49	Supplying, fitting and fixing Anglo-Indian W.C. in white glazed vitreous china ware of approved make complete in position with necessary bolts, nuts etc. a) With 'P' trap (with vent) PWDS&P Schedule, page-79, item no -3 (a)	4	3104.00	Each	12416.00	
50	Supplying, fitting and fixing Closet seat of approved make with lid and C.P. hinges, rubber buffer and brass screws complete. (b) Anglo Indian (i) Plastic (hallow type) White PWD S&P Schedule, page-81, item no 10.b.i	4	380.00	Each	1520.00	
51	Supplying, fitting and fixing Flat back urinal (half stall urinal) in white vitreous chinaware of approved make in position with brass screws on 75 mm X 75 mm X 75 mm wooden blocks complete (ii) 470 mm X 280 mm X 340 mm PWD S&P Schedule, page.80, item no-6/(ii)	3	945.00	Each	2835.00	
52	Supplying fitting and fixing squatting plate with integrated flushing in white vitreous set in cement concrete (6:3:1) with jhama chips complete. (Payment of concrete will be paid seperately) (i) 450 mm x 350 mm	2	881.00	Each	1762.00	
53	Supplying, fitting and fixing 10 litre P.V.C. low-down cistern conforming to J.S. specification with P.V.C. fittings complete, C.I. brackets including two coats of painting to bracket etc. PWD S&P Schedule, Page No.-36 Item No.-2,	4	1015.00	Each	4060.00	
54	Supplying, fitting and fixing 32 mm dia. Flush Pipe of approved make with necessary fixing materials and clamps complete. i) Polythene Flush Pipe PWD S&P Schedule, Page no 81. Item no. II(i)	4	155.00	Each	620.00	
55	Supplying, fitting and fixing urinal flush pipe fittings of approved brand. (a) C.P. urinal flush pipe fittings range of one PWD S&P Schedule, S.P.81, item-12/a	2	414.00	Nos	828.00	

56	Supplying, fitting and fixing white vitreous china best quality approved make wash basin with C.I brackets on 75 mm x 75 mm wooden blocks, C.P waste fittings of 32 mm dia. mending (ii) 550 mm X 400 mm size PWD S&P Schedule, P-41, It 2 (ii)	2	2208.00	Each	4416.00
57	Supplying fitting and fixing pedestal of approved make for wash basin (White) PWD S&P Schedule, P-41, It 3	2	1497.00	Each	2994.00
58	Supplying, fitting and fixing approved brand P.V.C. CONNECTOR white flexible, with both ends coupling with heavy brass C.P. nut, 15 mm dia., (iii) 600 mm long PWD S&P Schedule, Page No.-43 Item No.-9-iii	5	107.00	Each	535.00
59	Supplying, fitting and fixing approved brand 32 mm dia. P.V.C. waste pipe, with PVC coupling at one end fitted with necessary clamps. (iv) 1050 mm long each PWD S&P Schedule, Page No.-43 Item No. 10-iv	2	91.00	Each	182.00
60	(f) Hand Shower (Health Faucet) with 1mtr Flexible Tube with Wall Hook (Equivalent to Code No. 573 & Model - ALLIED of Jaquar or similar) PWD S&P Schedule, Page No.-3 Item No.- 3 f,	5	1251.00	Each	6255.00
61	(a) (i) Chromium plated Bib Cock short body (Equivalent to Code No. 511 & Model - Tropical/ Sumthing Special of ESSCO or similar brand). PWD S&P Schedule, Page No.-6 Item No.-7-a-i	7	539.00	Each	3773.00
62	(b) (i) Chromium plated Stop Cock (Equivalent to Code No. 513(A) & 513(8) & Model - Tropical/ Sumthing Special of ESSCO or similar PWD S&P Schedule, Page No.-6 Item No.-7-b-i	5	493.00	Each	2465.00
63	Chromium plated angular Stop Cock with wall flange (Equivalent to Code No. 5053 & Model - Florentine of Jaguar or similar brand). PWD S&P Schedule, Page No.-6 Item No.- 7-d-i,	5	815.00	Each	4075.00
64	Supplying, fitting and fixing pillar cock of approved make. a) (i) CP Pillar Cock - 15 mm. (Equivalent to Code No. 507 & Model - Tropical / Sumthing Special of ESSCO or similar brand). (P. No. - 45, Item. No. - 19(a)i, Pwd Sanitary Plumbing Schedule 2017)	2	555.00	Each	1110.00
65	Supplying, fitting and fixing PVC pipes of approved make of Schedule 80 (medium duty) conforming to ASTM D - 1785 and threaded to match with GI Pipes as per IS : 1239 (Part - I), with all necessary accessories, specials viz. socket, bend, tee, union, cross, elbo, nipple, long screw, reducing socket, reducing tee, short piece etc. fitted with holder bats clamps, including cutting pipes, making threads, fitting, fixing etc. complete in all respect including cost of all necessary fittings as required, jointing materials and two coats of painting with approved paint in any position above ground. (Payment will be made on the centre line measurements of total pipe line including all specials. No separate payment will be made for accessories, specials. Payment for painting will be made seperately) (a) For Exposed Work PVC Pipes, 25mm Page No.-12 Item No.-19-i(a), PWD, VOL-II, 2017-18	25	177.00	mtr.	4425.00
66	(a) (a) For Exposed Work PVC Pipes, 15 mm Page No.-12 Item No.-19-i(a), PWD, VOL-11, 2017-18	10	101.00	mtr.	1010.00
67	(b) For Concealed Work PVC Pipes, 15 mm Page No.-12 Item No.-19-i(b), PWD, VOL-11, 2017-18	10	137.00	mtr.	1370.00
68	Supplying and fitting fixing of gunmetal wheel valve of approved brand and make tested to 21 Kg per sq. cm. 25 mm dia (ESJ) PWD S&P Schedule, P-5 It-5,vii),	2	778.00	Each	1556.00
69	Supplying P.V.C. water storage tank of approved quality with closed top with lid (Black) - Multilayer (b) 1000 litre capacity PWD S&P Schedule, page.37, item no-6 (b)	2	5128.00	Each	10256.00
70	Labour for hoisting plastic water storage tank. (i) Upto 1500 litre capacity.	2	96.00	Each	192.00
71	Labour for punching hole in plastic water storage tank upto 50 mm dia. PWD S&P Schedule, (P. No. - 38, Item. No. - 13	4	19.00	Each	76.00

72	Supply of UPVC pipes (B Type) & fittings conforming to IS-13592-1992 (A) (i) Single Socketed 3 Meter Length, (b) 110 mm PWD S&P Schedule, Page No.-68 Item No. 23,(A)(i)(b)	30	292.00	mtr.	8760.00
73	(B) Fittings (i) Coupler, (b) 110 mm	8	85.00	Each	680.00
74	(ii) Plain Tee, (b) 110 mm	12	85.00	Each	1020.00
75	(iii) Door Tee, (b) 110 mm	10	195.00	Each	1950.00
76	(x) Bend 45°, (b) 110 mm	10	89.00	Each	890.00
77	(xi) Door Bend (T.S.), (b) 110 mm	7	147.00	Each	1029.00
78	xvii Pipe Clip, (b) 110 mm	30	21.00	Each	630.00
79	xviii W.C. Connector (150 mm lone:l 125 X 110rw /WC Rine:1 75 mm	4	142.00	Each	568.00
80	xxxi1 Plain Floor Trao with Too tile & Strainer 75 mm	7	144.00	Each	1008.00
81	L) Rubber Ring, fb) 110 mm	15	17.00	Each	255.00
82	C)Rubber Lubricant 500 ML	1	187.00	500ml	187.00
83	D)Solvent Cement 250 ML	1	103.00	250ml	103.00
84	Labour for fitting and fixing U.P.V.C. pipes for above ground work including cost of jointing materials etc. fitting and fixing all necessary specials, cutting pipes, cutting holes in total pipeline including specials. (8) Under ground, (ii) 110 mm dia. PWD S&P Schedule, (P. - 74, Item. No. - 24 (B)	25	84.00	mtr.	2100.00
85	Supplying, fitting & fixing UPVC pipes A- Type and fittings conforming to IS:13592-1992 with aU necessary clamps nails, including making holes in walls, floor etc. cutting trenches in any soil through masonry concrete structures etc if necessary and mending good damages including joining with jointing materails (Spun Yarn, Valamoid/Bitumen/M-Seal etc) complete. A) UPVC Pipes: (i) 75 mm. Dia. (P. - 212, Item. No. - 21 (A)(i), (B),(c),(i) & (B), (d),(i), Pwd volume- i, 2017)	30	188.00	mtr.	5640.00
86	B) UPVC Fittings: c) Bend 87.5 degree (i) 75 mm. Dia.	6	95.00	mtr.	570.00
87	B) U PVC Fittings: d) Shoe fil 75 mm. Dia.	2	78.00	Mtr	156.00
88	Constructing Inspection pit of inside measurement 600mm X 600mm X upto 600mm (depth) with 250 mm thick 1st. class brick work in cement mortar (1:4) on all sides, bottom of the pit consisting of 100 mm thick cement concrete (1:3:6) with stone chips over a layer of jhama brick flat soling, 15 mm thick (1:4) cement plaster to inside walls and out-side walls upto G.L. and 20 mm.thick (1:4) plaster to bottom of the pit, providing necessary invert with cement concrete (1:3:6) with stone chjps as per direction, neat cement finishing to entire internal surfaces, top of the pit covered with 100 mm thick R.C.C. slab (1:1.5:3) with stone chips and necessary reinforcements upto 10/o and shuttering including 6 mm thick cement plaster (1:4) in all external surfaces of the slab and one 560 mm dia. R.C.C. manhole cover of approved make supplied, fitted and fixed in the slab with necessary fittings, necessary earthwork in excavation in all sorts of soil, filling sides of the pit with earth and removing spoils after work complete in all respect with all costs of labour and materials. i) With Pakur variety (Other than SAIL/TATA/RI NL). PWD S&P Schedule, S.P.87,Item No-1/(i), 7th Corrigenda Volume ii	3	6471.00	Each	19413.00

89	<p>Construction of septic tank of different capacities as per approved drawing with 1st class brick work in cement mortar (1:4) including two 560 mm dia. R.C.C. manhole cover (heavy type) of approved make supplied, fitted and fixed in the 100mm thick R.C.C (1:1.5:3) top slab with necessary fittings, 20mm thick cement plaster (4: 1) with neat cement finish to the internal surfaces and 15 mm thick cement plaster (4: 1) to outside all upto 200 mm below G.L floor finished with 25 mm thick grey artificial stone over</p> <p>100 mm thick R.C.C(1:1.5:3) bottom slab including supplying, fitting and fixing all necessary specials, fittings, S.W. tees, C.I. foot rest etc. including excavation earth in all sorts of soil, shoring, bailing out and pumping out water as necessary, ramming, dressing the bed and refilling the sides of the tanks with earth, removing spoils, filling up the chamber with clear water, removing foreign materials from the chamber and including constructing attached inspection pit as per approved drawing and connecting all necessary pipes, joints etc. with internal plaster work and artificial stone flooring is to be done with admixture of water proofing compound @ 0.5% by weight of cement with all costs of labour and materials.</p> <p>(ii) For 20 users) With Pakur variety. QSW/JSPL/SHYAM/SRMB/ELECTROSTEEL/SSL) P,WDS&P Schedule, S.P.88,Item No-3(iii)(A) 7th Corrigenda Volume ii</p>	1	82612.00	Each	82612.00
90	<p>Construction of circular soak well 2.5 metre deep in all types of sandy soils with dry brick work upto 1.6 metre from the bottom having 150 mm intermediate cement brick work (1:4) band all round and cement brick work (1:4) upto 0.90 metre from top with 20mm thick cement plastering (1:4) to inside face upto the depth of cement brick work, 15mm thick cement plaster (1:4) on outer face from top of the well upto G.L. and 6 mm thick cement plaster (1:4) on top of the R.C.C. cover slab including filling bottom 1.00 metre of inside of the well with brick metal (50 mm to 63 mm size) including R.C.C. cover slab of 100 mm thick with cement cone (1:1.5:3) with stone chips with necessary reinforcement and shuttering including one 560 mm dia. R.C.C. manhole cover (heavy type) of approved make supplied, fitted and fixed in the cover slab with necessary fittings, making necessary arrangements for pipe connections, excavation of well including shoring, dewatering and removing the excess earth from the premises as per direction complete in all respect with all costs of labour and materials. With 250 mm thick dry brick work and 250 mm thick cement brick work (1:6) and 1.00m inside dia. (Other than SAIL/TATA/RINL) S.P.89,Item No-4 7th Corrigenda Volume ii</p>	1	15599.00	Each	15599.00
91	<p>Supplying, fitting and fixing towel rail with two brackets. (a) C.P. over brass (ii) 25 mm dia. and 600 mm long PWD S&P Schedule, p No 82 I No- 22 (a)(ii)</p>	2	430.00	Each	860.00
92	<p>Supplying, fitting and fixing bevelled edged mirror 5.5 mm thick silver red as per LS.</p>	2	484.00	Each	968.00
93	<p>Supplying, fitting and fixing soap holder. (b) Fibre glass Sanitary and plumbing work schedule P-82, It-18(b)</p>	4	58.00	Each	232.00

94	Supplying, fitting and fixing glass shelf with aluminium guard rails. (a) Ordinary type with 5.5 mm sheet glass (i) 450 mm X 125 mm Sanitary and plumbing work schedule P-81, It-16(a)(i)	2	341.00	Each	682.00
				Sub Total Of (A)	771773.09
				Add S.G.S.T. @ 9%	69459.58
				Add C.G.S.T. @ 9%	69459.58
				Cost Of Civil & Sanitary Work	910692.25
				Add L.W.C. @ 1%	9106.92
				Total payable Amount Including L.W.C.	919799.17
				Add Contingency @3%	27320.77
				Total payable Amount Including L.W.C. and contingency	947119.94
				Say Rs.	947120.00

[Signature]
21/05/25
Sub Assistant Engineer,
Dinhata Municipality

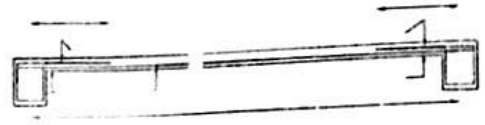
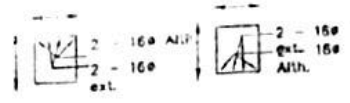
[Signature]
22/05/25
Chairman
Dinhata Municipality

[Signature]
23/06/25
Junior Engineer
Cooch Behar Division M.E. Dte.
Govt. of West Bengal

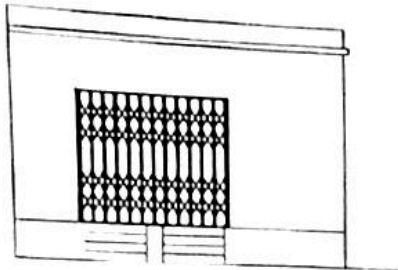
MAY BE VETTED
[Signature]
23/06/25
Assistant Engineer
Cooch Behar Division M.E. Dte
Govt. of West Bengal

VETTED
[Signature]
24/6/25
Executive Engineer
Cooch Behar Division M.E. Dte.
Govt. of West Bengal

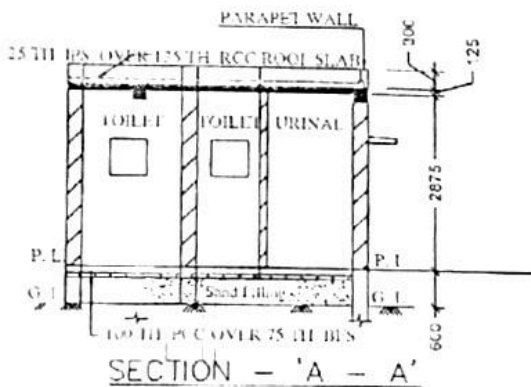
MODEL DRAWING FOR CONSTRUCTION OF C. T./P.T.
 TOILET SEATS 4 Nos URINAL 5 Nos
 MODEL NO. - G



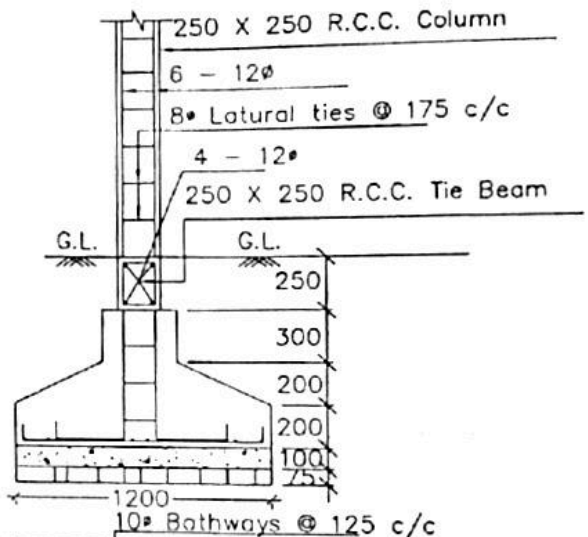
Details Of R.C.C Roof Slab & Beam
 (SCALE - 1 : 25)



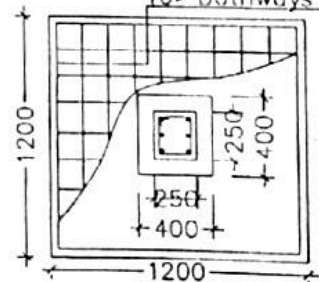
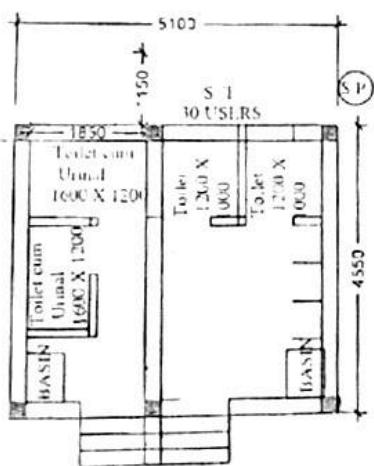
FRONT ELEVATION



SECTION - 'A - A'



DETAILS OF R. C. C COLUMN
 (SCALE - 1 : 25)



[Signature]
 21/05/25.
 Sub Assistant Engineer,
 Dinhata Municipality

[Signature]
 22/05/25
 Chairman
 Dinhata Municipality

Checked & Verified
[Signature]
 Engineer (Civil)
 HILL INSPIRATION



[Signature]
 23/06/25.
 Assistant Engineer
 Cooch Behar Division M.E. Dte
 Govt. of West Bengal

Assistant Engineer
 Cooch Behar Division M.E. Dte.
 Govt. of West Bengal

**CONSTRUCTION OF TOILET BLOCK (CT/PT) MODEL NO - G
TOILET SEATS -4 NOS AND URINAL- 5 NOS , NON SCHEDULE ITEMS**

SL.NO	Item Description & Item No.	Quantity	Rate	Unit	Ammount
1	Non Shedule Item Sl. No. 91-106 (Order as per SUDA) standard plastic dustbin (12lits)	3	350	Each	1050.00
2	Sinage APC based & Reflective vinyl	5	3776	each	18880.00
3	Supplying and fixing sinage with fixing stand post for public toilet for visible to passersby	5	1000	Each	5000.00
4	Glow Sign board Name and contact details of the following are displayed prominently - Toilet Identification number , name of ULB under which jurisdiction toilet is coverwd , ward number and maintanance authority prominently displayed for each toilet block supervisor, supervisor's agency and area sanitary inspector.	1	5000	each	5000.00
5	Installation of Sinage	1	2071	each	2071.00
6	Air freshner(pack of 4nos)	8	216	Each	1728.00
7	Air freshner (Naphthaline 250 gm)	5	210	Each	1050.00
8	Supplying paper Napkin	5	50	Each	250.00
9	Supplying Sanitary Napkin (Whisper or similar make 50 pcs)	4	520	Each	2080.00
10	Harpic (blue 500 ml)	4	300	Each	1200.00
11	Harpic (Red 500 ml)	4	150	Each	600.00
12	Gala double lip floor wiper	4	350	Each	1400.00
13	Colin glass or surface cleaner	4	200	Lit	800.00
14	Muriatic Acid	4	145	Lit	580.00
15	Bleaching powder	4	120	Kg	480.00
16	Dettol ,lifeboy or similar make liquid soap	8	140	Lit	1120.00
17	Rubber hand gloves	6	80	Pair	480.00
18	Double side plastic brush	6	125	Each	750.00
19	Plastic Broom	4	170	Each	680.00
20	SMS/any otherICT based feedback system (With number displayed on which SMS has to be sent)	1	5000	each	5000.00
21	Mini Tulu Pump	1	4000	each	4000.00
22	supplying roaster /register for keeping acoount of regular cleanig	3	200	Each	600.00
23	Lettering on Toilet Wall for display of name and contact details of ULB ward number and name of maintanance authority , saniinspector, etc.	1	1000	each	1000.00
			TOTAL	Rs.	55799.00
	Add for Labour Welfare Cess @ 1%			Rs.	621.00
			Total:-	Rs.	56420.00
	Add for Contingency @ 3%			Rs.	1693.00
			TOTAL:-	Rs.	58113.00

MAY BE VETTED

[Signature]
23/06/25
Assistant Engineer
Cooch Behar Division M.E. Dte
Govt. of West Bengal

VETTED

AMM
24/6/25

Executive Engineer
Cooch Behar Division M.E. Dte.
Govt. of West Bengal

[Signature]
22/05/25

Chairman
Dinhata Municipality

[Signature]
21/05/25
Sub Assistant Engineer,
Dinhata Municipality

[Signature]
23/05/25
Assistant Engineer
Cooch Behar Division M.E. Dte.
Govt. of West Bengal

**NAME OF WORK:- ESTIMATE FOR ELECTRICAL WORK OF PUBLIC TOILET AT CHILDREN PARK WARD NO. - 02
UNDER DINHATA MUNICIPALITY OF WEST BENGAL (MODEL NO - G)
[ASPIRATIONAL PARAMETER]**

* As per PWD & I & WD schedule district charges will be applicable on PWD & I & WD schedule items

* No district charges will be applicable on non-schedule items

SI No.	Item Description	Unit	Quantity	Rate	Amount	Remarks
1	Distribution wiring in 2 x 22/0.3 (1.5 sqmm) single core stranded 'FR' PVC insulated & unsheathed copper wire (Brand approved by EIC) in 20mm size PVC rigid conduit 'FR' (Precision make), with 1x22/0.3 (1.5 sqmm) single core stranded 'FR' PVC insulated & unsheathed copper wire for ECC, to light/fan/call bell points with Piano Key type switch fixed on MS CRC sheet metal (16 SWG) switch board cum JB on wall complete with 2 no. suitable size "Ph & N" copper bar incl. bakelite/Perspex (wall matching color) top cover 3 mm thick and incl. 175mmx100mmx65mm inspection box, making earthing attachment, painting the MS box and mending good the damages to original finish. [PWD Schedule Page No-E-14 Item No-2a]	Point	16	673.20	10771.20	ADD DISTRICT CHARGES
	Average run 5 mtr					
2	Distribution wiring in 1.1 KV grade 22/0.3 (1.5 sqmm) single core stranded 'FR' PVC insulated & unsheathed copper wire (Brand approved by EIC) in 20mm size PVC rigid conduit 'FR' (Precision make), with 1.1 KV grade 1 x 22/0.3 (1.5 sqmm) single core stranded 'FR' PVC insulated & unsheathed copper wire as ECC, to 5A 3 pin flush type plug socket & Piano Key type switch fixed on MS CRC sheet metal (16 SWG) switch board cum JB on wall incl. bakelite/Perspex (wall matching color) top cover 3 mm thick and incl. painting the MS box and mending good the damages to original finish On Board (only for pay counter) [PWD Schedule Page No-E-15; I-4a]	Point	1	73.70	73.70	ADD DISTRICT CHARGES
3	Supplying and fixing 240V 32A Double Pole AC Type 30mA RCCB.(Complete Set) (ISI marked) [Make- Legrand] (Cat No 4113/95) [Legrand Page No-92]	Nos	1	5942.00	5942.00	NO DISTRICT CHARGES

4	Distribution wiring in 1.1 KV single core stranded 'FR' PVC insulated & unsheathed copper wire (Brand approved by EIC) in 20mm size PVC rigid conduit 'FR' (Precision make) incl. necy. fittings as required 2 x 36/0.3 (2.5 sqmm) + 1 x 22/0.3 (1.5 sqmm) ECC [PWD Schedule Page No-E-14 Item No-1a(ii)]	mtr	15	130.90	1963.50	ADD DISTRICT CHARGES
5	Supplying and fixing double-door SPN MCB Distribution Board with IP-42/43 protection, concealed in wall after cutting the wall & mending good the damages to original finish incl. Inter connection with suitable size of copper wire and neutral link & provision for earthing attachment. a) For (2+4 way) (Make -Havells) [PWD Schedule Page No-D-9;Item No-13]	No	1	1028.50	1028.50	ADD DISTRICT CHARGES
6	Supplying and fixing 240/415 V MCB of Breaking capacity 10kA & C characteristics on din rail of existing DBs and necessary connection 6-32A SP MCB (Make -Havells) [PWD Schedule Page No-D-6;Item No-7]	Nos	4	184.80	739.20	ADD DISTRICT CHARGES
7	Supplying and fixing 240/415 V MCB Isolator on din rail of existing DBs and necessary connection. 40A DP MCB Isolator (Make -Havells) [PWD Schedule Page No-D-5;Item No-6]	Nos	1	228.80	228.80	ADD DISTRICT CHARGES
8	Supply of TMC501 conventional industrial batten (Philips make) LED Tube,model no-TMC501 P1xT-LED 22W P3241 (WB I & WD schedule P-113, I- 5:3 F.22)	Nos	4	464.53	1858.12	ADD DISTRICT CHARGES
9	Fixing only single/twin fluroscent light fitting complete with all accessories directly on wall/ceiling by screws etc.. [PWD Schedule Page No-C-2;Item No-14a]	Nos	4	94.60	378.40	ADD DISTRICT CHARGES

10	Supply & fixing Bulk head light fittings with die cast aluminium housing frosted/clear glass on wall/ceiling incl S/F 9 watt LED Lamp complete set. [Make - Havells] (PWD sch - Page--D-13, I-23)	Nos	6	711.90	4271.40	ADD DISTRICT CHARGES
11	Supply & fixing smart bright street light complete with all accessories to be fixed from the wall of building or on pole incl. making holes /providing clamping arrangement & necy. GI reducer as required. S&F 40 mm GI Pipe 1.5 mtr average length & s&f necy length of 1.5 sqmm pvc insulated single core copper wire & making connections as required & mending good damages incl wall painting. (30 Watt) (Make - Bajaj) [WB I&WD sch P-111, I-f.9.0.2]	Nos	1	3106.48	3106.48	ADD DISTRICT CHARGES
12	Supply of 9" domestic metal exhaust fan 9" (225mm)SWEEP. TRANS AIR - (Make-Crompton/Havells/Bajaj) (UD & MA schedule P-14, I-5)	Nos	3	1863.00	5589.00	NO DISTRICT CHARGES
13	Fixing only exhaust fan after making hole in wall and making good damages and smooth cement finish etc. as practicable as possible and providing necy. length of PVC insulated wire and making connection for exhaust of following diameter: 22.5 cm (9") [PWD Schedule Page No-C-4;Iteam No-28(b)]	Nos	3	271.70	815.10	ADD DISTRICT CHARGES
14	Fixing only louver shutter/cowl on wall with necy. bolts & nuts (6 mm dia x 62 mm long) For 22.5 cm(9") Exhaust fan [PWD Schedule Page No-C-4;Iteam No-30(b)]	Nos	3	90.20	270.60	ADD DISTRICT CHARGES
15	Supply of 240V A.C Ceiling Fan (48" sweep,1200 mm complete) [Make-Crompton [for counter only] (UD & MA schedule P- 23, I- 70)	Each	1	2283.00	2283.00	NO DISTRICT CHARGES

16	Fixing only Ceiling Fan [PWD sch P- C-3, I-21(a)]	Each	1	72.60	72.60	ADD DISTRICT CHARGES
17	Supply & Fixing 240 V, 16/20 A Piano key type switch (Brand approved by EIC) on sheet metal switch board incl. S & F 100x100x65mm MS (16SWG) switch board and bakelite/perspex top cover of 3mm thick by Brass screws after making housing for switch by cutting bakelite/perspex cover and making necessary connections as required. (For Hand Dryer machine) [PWD sch P- E-6, I-17(b)]	Each	2	221.10	221.10 442.20	ADD DISTRICT CHARGES
18	S/F 240V 25A Modular type starter (brand approved by EIC) with 25 A. Modular switch DP MCB (C-Curve) and 4 Module G.I. Modular type switch board with 4 Module Top Cover Plate flushed in wall incl. S/F switch board and Cover Plate and making necy. Connections with PVC Copper wire and earth connectivity wire etc. as per schedule [for Pump] [PWD Schedule Page No-E-19, Item No-17] (Please follow in details)	Nos	1	862.40	862.40	ADD DISTRICT CHARGES
19	Supply and Fixing of 2 mm Polyvinyl glow sign board made of 22 SWG GI sheet box with 1"X1" aluminum channel for fixing the vinyl board after necessary cutting the letter as required & s/f LED tube light fittings along with all accessories. (16 sqft @495.00/sqft) (UD & MA schedule P-14, I-4)	Nos	1	7920.00	7920.00	NO DISTRICT CHARGES

20	Earthing installation by GI earth Spike (1830 X 20 mm) including 8SWG GI EarthWire & GI nuts, bolts, washer etc.	Nos	1	450.00	450.00	NO DISTRICT CHARGES
					48845.10	51619.80
					8792.12	9291.56
					57637.22	60911.36
					576.37	609.11
					58213.59	61520.47
					1729.12	1827.34
	Contingency Amount on "A"				59942.71	63347.81
	(Total+GST)=Rs:				59943.00	

Service Connection Charges as per Quotation

[Signature]
19/02/25
Sub Assistant Engineer
Dinhata Municipality

[Signature]
19/02/25
Chairman
Dinhata Municipality

Say Rs. 63,348.00

Technically Vetted Rs. 63,348.00
(Rupees Sixty three thousand three hundred forty eight.)

[Signature]
05.03.25
Junior Engineer
Electrical & Mechanical Division
SUDA

[Signature]
5/3/25
ASSISTANT ENGINEER
ELECTRICAL & MECHANICAL DIVISION
SUDA

[Signature]
5/3/25
Executive Engineer (E/M)
O/O the Secretary M.E. Dte.
Government of West Bengal