

**Civil & Sanitary Work Estimate ( A ) For Construction of the Public Toilet Block  
for Dinhata High School at ward no-06 under Dinhata Municipality. ( Model 'B' )**

No. Of seat - Male - ( W.C. -3 + Urinal -9 ) & Female - (W.C. -5 + Urinal -5) = Total ( W.C. -8 & Urinal -14)

Rate As per PWD Building Works Schedule ( Volume 1 ) With effect from 01.11.2017

Sl. No.	Item Description & Item No.							Quantity	Rate	Unit	Amount
	Details	Side	No.	L	B	H	QNTY.				
1	Earth work in excavation of foundation trenches or drins, in all sorts or soil including mixed soil but excluding laterite or saltille) including removing, grading or tacking the spoils within a lead of 75 m. as directed. The item includes necessary trimming the sides of trenches, levelling, dressing and ramming the bottom, dailing out water as required complete. (a) Depth of excavation not exceeding 1,500 mm. PWD Building Works schedule Page							31.26	11927.00	%Cum	3728.38
2	Earth work in filling in foundation trenches or plinth with good earth, in layers not exceeding 150 mm. including watering and ramming etc. layer by layer complete. (Payment to be made on the basis of measurement of finished quantity of work). (a) With earth obtained from excavation of foundation. PWD Building Works schedule, Page - 1. Item -3.a							20.84	7754.00	%Cum	1615.93
3	(A) Filling in foundation or plinth by silver sand in layers not exceeding 150 mm as directed and consolidating the same by thorough saturation with water, ramming complete including the cost of supply of sand. (payment to be made on measurement of finished quantity) PWD Building Works schedule, Page - 2, Item -4.a							35.99	43131.00	%Cum	15522.85
4	Single Brick Flat Soling of picked jhama bricks including ramming and dressing bed to proper level and filling joints with local sand. PWD Building Works schedule, Page- 114, Item - 1 ( Corri. Page-01, Date-04-06-2018)							100.07	322.00	Sqm	32222.54
5	Cement concrete with graded jhama khoa (30 mm size) excluding shuttering in ground floor and foundation. (a) 1:3:6 proportion. PWD Building Works schedule, Page -23, Item -B.1.a, (Corri. Page- 09, Date-04-06-2018) Rate Analysis (							10.01	3261.05	Cum	32643.11

6	<p>Ordinary Cement concrete (mix 1:1.5:3) with graded stone chips (20 mm nominal size) including shuttering and reinforcement if any, in ground floor as per relevant IS codes</p> <p>a) Lakur Variety / Chandil Variety</p> <p>PWD Building Works schedule, p 26 Item 10 a (Rate Analysis)</p>	26.75	6048.75	Cum	161804.06
7	<p>25mm thick damp proof course with cement concrete with stone chips (1:1.5:3) [with graded stone aggregate 10 mm nominal size] and admixture of water proofing compound as per manufacturer's specification followed by two coat of polymer based paint, (1st coat after 4 to 5 days of concrete laying and 2nd coat just before brick</p> <p>7 masonry work) as directed (cost of water proofing compound &amp; polymer based paint to be paid separately) (Chequering not required over concrete or painted surface)</p> <p>Note:</p> <p>11- Waterproofing as per item 9, polymer based paint as per item 8</p> <p>1. (a) of subhead C of section (C).</p> <p>PWD Building Works schedule Page -47 Item -1 (Rate Analysis)</p>	6.52	203.00	sqm	1323.56
8	<p>125 mm. thick brick work with 1st class bricks in cement mortar (1:4) in ground floor</p> <p>PWD Building Works schedule, Page - 16, Item - 16 (Corri. Page 03, Date 04.06.2018) (Rate Analysis)</p>	58.42	666.27	Sqm	38923.49
9	<p>Supplying and laying polythene sheet (150 gm/sq.111) over dail proof course or</p> <p>9.1 floor flooring or roof terracing or foundation or foundation trenches.</p> <p>two Building Works schedule, Page -47, Item-3</p>	65.66	24.00	Sqm	1575.84 15.76
10	<p>Hire and labour charges for shuttering with centering and necessary staging upto 4 m using approved stout props and thick hard wood planks of approved thickness with required bracing for concrete slabs, beams and columns, lintels curved or straight</p> <p>including fitting, fixing and striking out after completion of works (upto roof of ground floor)</p> <p>(f) 25 mm to 30 mm shuttering without staging in foundation PWD Building Works schedule, Page -42, Item- 36.f</p>	70.71	205.00	Sqm	144.96 14495.55
11	<p>Hire and labour charges for shuttering with centering and necessary staging upto 4 m using approved stout props and thick hard wood planks of approved thickness with required bracing for concrete slabs, beams and columns, lintels curved or straight</p> <p>11 including fitting, fixing and striking out after completion of works (upto roof of ground floor) (A) (25mm to 30 mm thick wooden shuttering as per decision &amp; direction of Engineer</p>	82.50	328.00	Sqm	27060.00
12	<p>Artificial stone in floor, dado, staircase etc with cement mortar (1:2:4) with stone chip laid in panels as directed with topping made with ordinary or white cement (as necessary) and marble dust in proportion (1:2) including smooth finishing and rounding off corners including raking out joints or roughening of concrete surface and application of cement slurry before flooring works using cement @ 1.75 kg/sq.m all complete including all materials and labour. In ground floor</p>	238.06	280.00	Sqm	66656.80
13	<p>Reinforcement for reinforced concrete work in all sort of structures including distribution bars, stirrups, binders etc initial straightening and removal of loose rust (if necessary), cutting to requisite length, hooking and bending to correct shape, placing in proper position and binding with 16 gauge black annealed wire at every intersection, complete as per drawing and direction.</p> <p>(a) For works in foundation and upto roof or ground floor/upto 4 m.</p> <p>(i) Tor steel/Mild Steel, JSPL/SWAYN/ELETRO/STEEL</p> <p>PWD Building Works schedul, Page - 43, Item - 40 a. 1 (Corri. 10th Page 01 Date - 23</p> <p>11.717fn (1h1P Amdv is1</p>	2.519	59241.18	MT	149228.53
14	<p>Collapsible gate with 40 mm x 10 mm x 6 mm Tee as top and bottom guide rail, 20 mm x 0 mm x 2 mm vertical channels 100 mm apart in full stretched position 20m x 5 mm MS flat as collapsible bracings properly riveted and washed including 38 mm steel roller including locking arrangements, fitted and fixed in position with lugs set in cement concrete including cutting necessary hives chasing etc in walls, floors etc and making good all damages.</p> <p>PWD Building Works schedule, Page - 106, Item - 18</p>	4.20	4351.00	Sqm	18274.20



21	Supplying, fitting and fixing fibre reinforced polymer (FRP) Composite door frame as per approved section with glass fibre reinforced plastic moulded skins and a special sandwich core, so as to impart monolithic composite structure as per approved technology of Department of Science and Technology (DST) to satisfy IS-4020 door testing performance criteria. (i) 66mm x 90mm PWD Building Works schedule, P-115, It-3 (i)	64.35	497.00	Mtr.	31981.95
22	Supplying, fitting & fixing fibre reinforced polymer (FRP) Composite door shutters as per approved design with glass fibre reinforced plastic moulded skins and a special sandwich core, so as to impart monolithic composite structure as per approved technology of Department of Science and Technology (DST) to satisfy IS-4020 door testing performance criteria. In ground floor. (ii) 25 mm thick P-125 It-14 (ii)	16.36	2581.00	Sqm	42225.16
23	Anodised aluminium barrel/ tower/ socket bolt (full covered) of approved manufactured from extruded section conforming to I.S. 204/74 fitted and fixed with cadmium plated screw. (vii) 225mm long x 10mm dia. bolt. IWO Building Works schedule, P-144, It No. 26 (vii)	13.00	84.00	Each	1092.00
24	Iron butt hinges of approved quality fitted and Fixed with steel screws, with IS mark (viii) 100mm X 75mm X 3.50mm. PWD Building Works schedule, P-140, It No. -5 (viii)	39.00	66.00	Each	2574.00
25	Anodised aluminium decorative handle (hexagonal/ Outed) of approved quality fitted and fixed complete. (i) 150mm plate x 10mm dia rod x 12mm hexagonal/Fluted. PWD Building Works schedule, Page -146. Item no-31,(i)	26.00	87.00	Each	2262.00
26	Iron hasp bolt of approved quality fitted and fixed complete (oxidised) with 16111111 dia rod with concrete bolt and round fitting. b) 250mm long. IWO Building Works schedule, Page -141. Item no-10 b)	13.00	159.00	Each	2067.00
27	Supplying and laying chequered tiles of any shade and of approved quality with [1:1.5:3] cement concrete laid in pannels or patterns as directed in pavement footpath etc. including necessary underlay 25 mm thick (avg) cement mortar (1:3) complete in all respect with all labour and materials. ( Using cement slurry @4.4kg/sq.m at back side and @2.4 kg/sq.m for joint filling). PWD Building Works schedule. Page -74. Item no- 46(i). 25 mm thick	10.54	877.00	Sqm	9243.58
28	Rendering the Surface of walls and ceiling with White Cement base WATER PROOF wall putty of approved make & brand.(1.5 mm thick) In Ground Floor PWD Building Works schedule, PWD, P- 198, I- 5	355.56	122.00	Sqm	43378.32
29	Applying interior grade Acrylic Primer of approved quality and brand on plastered and concrete surface old or new surface to receive Distemper Acrylic emulsion paint including scraping and preparing the surface thoroughly, complete as per manufacturer's specification and as per direction of the E-I-C (Ground Floor) (b) Two Coats PWD Building Works schedule, Page -74 Item no- 46(i).	115.59	<del>81.00</del> 74.20	Sqm	<del>9362.79</del> 5109.08

	Distemping internal walls or ceiling including cleaning, washing, smoothening surface (b) wo coats PWD Building Works schedule, Page -196, Item no- 9(b)	115.59	49.00	Sqm	5663.91
31	Applying exterior grade Acrylic Primer of approved quality and brand on plastered or concrete surface old or new surface to receive Decorative Textured (Marit Finish) or Smooth Finish Acrylic exterior emulsion paint including scraping and preparing the surface thoroughly, complete as per manufacturer's specification and as per direction of the EIC in Ground Floor (b) two coats. PWD Building Works schedule Page -196 Item no- 8fbl	260.57	45.10	Sqm	11751.71
32	Protective and Decorative Acrylic Exterior emulsion paint of approved quality, as per manufacturer's specification and as per direction of EIC to be applied over Acrylic primer as required. The rate includes cost of materials, labour, scaffolding and all incidental charges but excluding the cost of primer in ground floor (two coats)(a) normal acrylic emulsion. PWD Building Works schedule, Page -197, Item no-17(a)	260.57	67.00	Sqm	17458.19
33	(b) Priming one coat on timber or plastered surface with synthetic oil bound primer of approved quality including smoothening surfaces by sand papering etc. PWD Building Works schedule, Page -200, Item no- 1 (b)	6.35	<del>29.00</del> 38.00	Sqm	<del>184.15</del> 241.30
34	(A) Painting with best quality synthetic enamel paint of approved make and brand including smoothening surface by sand papering etc. including using of approved putty etc. on the surface, if necessary: Page - 200, Item no- 1 (b) (a) On timber or plastered surface: With super gloss (hi-gloss) - (iv) Two coats (with any shade except white) PWD Building Works schedule, Page -200, Item no- 2(A)(a)(iv)	6.35	<del>79.00</del> 81.00	Sqm	<del>501.65</del> 514.35
35	(a) M.S. or W.I. Ornamental grill of approved design joints continuously welded with M.S. W.I. Flats and bars of windows, railing etc. fitted and fixed with necessary screws and lugs in ground floor. (i) Grill weighing above 10 kg./sq mtr and up to 16 Kg./sq. mtr. PWD Building Works schedule, P-104 Item-13 A (i) (3rd Corrigendum Page No 91)	1.16	10021.00	qntl.	11624.36
36	a) Priming one coat on steel or other metal surface with synthetic oil bound primer of approved quality including smoothening surfaces by sand papering etc. PWD Building Works schedule, P/200 Item-1(a)	13.55	29.00	Sqm	392.95
37	(A) Painting with best quality synthetic enamel paint of approved make and brand including smoothening surface by sand papering etc. including using of approved putty etc. on the surface, if necessary: (b) On steel or other metal surface: (iv) Two coats (with any shade except white) PWD Building Works schedule, P-200 Item-2(b)(iv)	13.55	79.00	Sqm	1070.45

38	<p>Applying and laying true to line and level vitrified tiles of approved brand size not less than 600 mm X 600 mm X 10 mm thick) in noor, skirting etc set in 20 mm sand cement mortar (1:4) and 2 mm thick cement slurry back side of tiles using cement @ 2.91 kg/sqM or using polymerised adhesive (6 mm thick layer applied directly over finished artificial stone noor/Mosaic etc without any backing course) laid after application slurry using 1.75 kg of cement per sqM below mortar only, joints grouted with admixture of white cement and colouring Pigment to match with colour of tile / epoxy grout materials of approved make as directed and removal of wax coating of top surface of tiles with warm water and polishing the tiles using soft and dry cloth upto mirror finish complete including the cost of materials, labour and all other incidental charges complete true to the manufacturer's specification and direction of Engineer-in-Charge (White cement, synthetic adhesive and grout material to be supplied by the contractor)</p> <p>i) With application slurry @ 1.75 kg/ Sq.m, 20 mm sand cement mortar (1:4) &amp; 2 mm thick cement slurry at back side of tiles, 0.2 kg/ Sq.m white cement for joint filling with pigment.</p>	52.35	1688.00	Sqm	88366.80
39	<p>Supplying, fitting &amp; fixing 1st quality Ceramic tiles in walls and floors to match with the existing work &amp; 4 nos. of key stones (10mm) fixed with araldite at the back of each tile &amp; finishing the joints with white cement mixed with colouring oxide if required to match the colour of tiles including roughening of concrete surface, if necessary or by synthetic adhesive &amp; grout material etc.</p> <p>B) Wall Area of tile above 0.09 Sq.m</p> <p>ii) Other than Coloured decorative including white</p> <p>PWD Building Works schedule, page-64, Item 35 (B.) (b) (ii) (3rd Corrigendum, Page 36)</p>	164.34	1036.00	Sqm	170256.24
40	<p>Supplying, fitting and fixing Black Stone slab used in Kitchen slab, alcove, wardrobe etc. laid and jointed with neceary adhesive Cement mortar (1:2) including grinding or polishing as per direction of Engineer-in-Charge in Ground Floor. a) Slab Thickness 20 to 25 mm</p> <p>PWD Building Works schedule. PWD, P-233, I- I(h) i</p>	9.12	642.00	Sqm	5855.04
41	<p>Supplying profiles of required section made of Aluminium Alloy Extrusions conforming to IS: 732-19133 and IS: 1285-1975; Anodized (with required film thickness and specified colour/ natural) matt finished conforming to IS: 1868-1983 for fabrication of composite door, sliding &amp; casement windows, partitions, formed of basic sections of any ISI embossed / certified make and brand as per direction of Engineer - In-Charge. (Payment will be made on finished length of the work).</p> <p>(A) In 10-12 Micron thickness Anodizing film</p> <p>i) Natural white h) Louvered window. i) Top, bottom and side member.</p> <p>PWD Building Works schedule, PWD, P-233, I- I(h) i</p>	27.30	183.00	M	4995.90
42	<p>ii) Louvered Section.</p>	15.60	658.00	M	10264.80
43	<p>iii) Cleat angle (No11-anodized).</p>	20.80	263.00	Sqm	5470.40

44	Partitions made from anodized extruded alloy aluminium sections for the following units - (A) Glazed aluminium sliding windows made of extruded and anodized alloy aluminium sections, fabrications, including cutting to proper shape and size, drilling and aligning 9F indow shutter frame fitted with in built locking arrangements, sliding rollers and ther necessary rittings, fixture, adhesives and joineries along with extruded neoprine or EPDM gasketing ir between window frame and masonry work (walls, column, 44 beam.lintels etc.) as well as betv.ween glass and shutter frame for fixing glass and including cutting to requisite size and fixing glass as per drawing, specification and direction of EtC. The rate includes the hire charge of all tools and plants, including all incidental charges, adhesive, joineries such as screw, cleat angle etc. but excluding the tost of extruded aluminium section, glass, neoprene/ EPDM gasket, locking arrangemen and roll rs.v) Louvered window. PWD Building Works schedule, P-243, I-9	3.51	730.00	Sq.M.	2562.30
45	Supplying bubble free float glass of approved make and brand conforming to IS: 2835- 1987. iv) 5mm thick coloured/ tinted/ smoke glass. PWD Building Works schedule, IP-243, I-9	3.51	585.00	SqM	2053.35
46	Painting block letters or digits in Black Japan or any approved paint as per dirccction.e) Size above 7.5 cm. and upto 10 cm. PWD Building Works schedule, P-268, It-17(e)	450.00	12.00	Each	5400.00
47	Spupplying and planting of different plants/ tree ( upplying well grown plants bushy and healthy, minimum height as speciried i.e. exposed height including all leads and lifts, G11-riage, handling, manuring applying pesticide and fertilizer etc. i) Furçaria Veriegated 10 to 121 aves in height 20-30 cm in earthen pot of size 25 cm	4	162.00	Each	648.00
48	ix) Ficus blakii (F. Vivicon) well branched (Bushy) of height 120cm -135 cm in earthen pot of size 30cm. PWD Building Works schedule, Page -261, It- 9 (x)	3	<del>162.00</del> 187.00	Each	<del>486.00</del> 561.00
49	1.xxvi) Areca Palm 4 - 5 suckers of height 90 cm to 105 cm in earthen pots of size 25 cm. PWD Building Works schedule, Page -261, It- 9 (xxvi)	3	<del>162.00</del> 127.00	Each	<del>486.00</del> 381.00
50	Supplying, fitting and fixing Anglo-Indian W.C. in white glazed vitreous china ware of approved make complete in po ition with necessary bolts, nuts etc. - With 'P' trap (with vent) PWD S&P Schedule, page-79, item no -3 (a)	8	<del>162.00</del> 3104.00	Each	<del>1296.00</del> 24832.00
51	Supplying, fitting and fixing Closet seat of approved make with lid and C.P. hinges, rubber buffer and brass screws complete .(b) Anglo Indian 51 (i) Pia tic (hallow type) White PWD S&P Schedule, page-81,item no 10.b.i	8	<del>162.00</del> 380.00	Each	<del>1296.00</del> 3040.00
52	Supplying, fitting and fixing Flat back urinal (halfstall urinal) in white vitreous chinaware of approved make in position with brass screws on 75 mm X 75 mm X 75 52 111111 wooden blocks complete (II) 470 mm X 280 mm X 340 mm	5	<del>973.00</del> 945.00	Each	<del>4865.00</del> 4725.00
53	Supplying, fitting and fixing 18 mm thick marbel partition slab with cha wk doongri square cut, both sides polished with two corners rounded and edges polished. PWD S&P Schedule, P-84 It-13J,	3.60	1426.00	Sqm	5133.60
54	Suppl ing fitting and fixing squatting plate with integrated flushing in white vitreous 54 set in cement concrete (6:3:1) with jhama chips complete. ( Payment of concrete will be paid seperately) (I) 450mm x 350 mm	5.0	881.00	Each	4405.00
55	Supplying, fitting and fixing 10 litre P.V.C. low-down cistern conforming to I.S. specification with P.V.C. fittings complete,C.I. brackets including Lwo coats of painting to bracket etc. rwo S&P Schedule, Page No.-36 Item No.-2,	8.0	1015.00	Nos	8120.00
56	Supplying,fitting and fixing 32 mm dia. Flush Pipe of approved make with necessary fixing materials and clamps complete. i) Polythene Flush Pipe PWD S&P Schedule, Page no 81. Item no. 11(i)	14.0	155.00	Each	2170.00
57	Supplying, fitting and fixing urinal flush pipe fittings of approved brand. (a) C.P. urinal flush pipe fittings range of one PWD S&P Schedule, S.P 81,item-12/a	10	414.00	Each	4140.00

	Supplying, fitting and fixing white vitreous china best quality approved make wash basin with C.I. brackets on 75 mm X 75 mm wooden blocks, C.P. waste fittings of 32 mm dia.,	10	2208.00	Each	22080.00
59	Supplying fitting and fixing pedestal o approved make for wash basin ( White ) PWD S&P Sc,hedule, P-41, It 3	10	1497.00	Each	14970.00
60	Supplying fitting and fixing approved brand P.V.C.CO NECTOR white flexible, with both ends coupling with heavy brass C.P. nut, 15 mm dia., (iii) 600 mm long PWD S&P Schedule, Page No.-43 Item No.-9-iii PWD,	10	<del>107.00</del> <del>91.00</del>	Each	<del>910.00</del> 1070.00
61	Supplying fitting and fixing approved brand 32 mm dia.P.V.C. waste pipe, with PVC coupling at one end fitted with necessary clamps. (iv) 1050 mm long each PWD S&P Schedule, Page No.-43 Item No. 10-iv	19	<del>91.00</del> <del>1251.00</del>	Each	<del>23769.00</del> 1729.00
62	(f) Hand Shower(Health Faucet) with 1mtr Flexible Tube with Wall Hook(Equivalent to Code No.573 & Model -ALLIED of Jaquar or similar). PWD S&P Schedule, Page No.-3 Item No.- 3 f,	8	<del>1251.00</del> <del>539.00</del>	Each	<del>4312.00</del> 10008.00
63	(a) (i) Chromium plated Bib Cock hort body (Equivalent to Code No. 511 & Model Tropical/ Sumthing Special of ESSCO or imilar brand).PWD S&P Sc1chedule, Page No.-6 Item No.-7-a-i	15	<del>539.00</del> <del>493.00</del>	Each	<del>7395.00</del> 8085.00
64	(b) (i) Chromium plated Stop Cock (Equivalent to ode No. 513(A) & 513(8) & Model - Tropical/ Sum thing Special of ESSCO or imilar PWD s&r S hedulc, Page No.-6 Item No.-7-b-i	15	<del>493.00</del> <del>360.00</del>	Each	<del>5400.00</del> 7395.00
65	Chromium plated angular Stop Cock with wall flange (Equivalent to Code No. 5053 & Model - Florentine of Jaquar or similar brand). PWD S&P Schedule, Page No.-6 Item No.-7-d-i,	8	<del>815.00</del> <del>309.00</del>	Each	<del>2472.00</del> 6520.00
66	Supplying, fitting and fixing pillar cock of approved make. a) (i) CP Pillar Cock - 15 111111. (Equivalent to Code No. 507 & Model - Tropical/ Sumthing Spcial of • SCO or similar brand). (P. No. - 45, Item. No. - 19(a), Pwd Sani ary Plumbing Schedule 2017)	8	<del>555.00</del> <del>815.00</del>	Each	<del>6520.00</del> 1440.00
67	Supplying, fitting and fixing PVC pipes of approved make of Schedule 80 (medium duty) conforming to ASTM D - 1785 and threaded to match with GI Pipes as per IS : 1239 (Part - I). with all necessary accessories, specials viz. socket, bend, tee, union, cross, elbo, nipple, long screw, reducing socket, reducing tee, short piece etc. fitted with holder bats clamps, including cutting pipes, making threads, fitting, fixing etc. complete in all respect including cost of all necessary fittings as required, jointing materials and two coats of painting with approved paint in any position above ground. (Payment will be made on the centre line measurements of total pipe line including all specials. No separate payment will be made for accesories, specials. Payment for painting will be made seperately). (a) For Exposed Work Pipes, 25 mm No.-12 Item No.-19-i(a), PWD,VOL-II, 2017-18 PVC Page	45	<del>177.00</del> <del>555.00</del>	mtr.	<del>7965.00</del> 24975.00
68	(a) (a) For Exposed Work Pipes, 15 mm No.-12 Item No.-19-i(a), PWD,VOL-II, 2017-18 PVC Page	20	<del>101.00</del> <del>177.00</del>	Mtr	<del>2020.00</del> 3540.00
69	(b) For Concealed Work Pipes, 15 mm 12 Item No.-19-i(b), PWD,VOL-II, 2017-18 PVC Page No.	20	<del>137.00</del> <del>101.00</del>	Mtr	<del>2740.00</del> 2020.00
70	Supplying and fitting fixing of gunmetal wheel valve of approved brand and make tested to 21 Kg per sq. cm. 25 mm dia(E5) PWD S&P Schedule, P-5 It-5,vii),	4	<del>778.00</del> <del>437.00</del>	Each	<del>3112.00</del> 548.00
71	Supplying P.V.C. water storage tank of approved quality with closed top with lid (Black) - Multilayer (b) 1000 litre capacity PWD S&P Schedule, page.37,item no-6 (b)	2	<del>5128.00</del> <del>778.00</del>	Each	<del>10256.00</del> 1556.00
72	Labour for hoisting plastic water storage tank. (i) Upto (a) Upto 1st story 1500 litre capacity. from G.L. page.37,item no-10 (i)(a) PWD S&P Schedule,	2	<del>96.00</del> <del>5128.00</del>	Each	<del>192.00</del> 10256.00

	Labour for punching hole in plastic water storage tank upto 50 mm dia. PWD S&P Schedule, (P. No. - 38, Item No. - 13)	4	<del>96.00</del> 19.00	Each	<del>384.00</del> 76.00
74	Supply of UPVC pipes (B Type) & fittings conforming to IS-13592-1992.(A) (i) Single Socketed 3 Meter Length, (b) 110 mm PWD S&P Schedule, Page No.-68 Item No. 23,(A)(i)(b)	50	292.00	mtr.	14600.00
75	(B) Fittings (i) Coupler, (b) 110 mm	16	85.00	Each	1360.00
76	(ii) Plain Tee, (b) 110 mm	20	85.00	Each	1700.00
77	(iii) Door Tee, (b) 110 mm	10	<del>85.00</del> 195.00	Each	<del>850.00</del> 1950.00
78	ix) Bend 45°, (b) 110 mm	10	<del>195.00</del> 89.00	Each	<del>1950.00</del> 890.00
79	xi) Door Bend (T.S.), (b) 110 mm	7	<del>89.00</del> 147.00	Each	<del>623.00</del> 1029.00
80	xvi) Pipe Clip, (b) 110 mm	30	<del>147.00</del> 21.00	Each	<del>4410.00</del> 630.00
81	xvii) W.C. Connector (150 mm long) 125 X 110(W/WC Ring) 75 mm	10	<del>21.00</del> 142.00	Each	<del>210.00</del> 1420.00
82	xxx) Plain Floor Trap with Top tile & Strainer 75 mm	14	<del>142.00</del> 141.00	Each	<del>1988.00</del> 2016.00
83	L) Rubber Ring, (b) 110 mm	30	<del>144.00</del> 17.00	Each	<del>4320.00</del> 510.00
84	C)Rubber Lubricant 500 ML	1	<del>17.00</del> 187.00	Each	<del>17.00</del> 187.00
85	D)Solvent Cement 250 ML	1	<del>187.00</del> 183.00	500 ML	<del>187.00</del> 183.00
86	Labour for fitting and fixing U.P.V.C. pipes for above ground work including cost of jointing materials etc. fitting and fixing all necessary specials, cutting pipes, cutting holes in total pipeline including specials. (B) Under ground, (ii) 110 mm dia. PWD S&P Schedule, (P. - 74, Item. No. - 24 (B))	50	84.00	mtr.	4200.00
87	Supplying, fitting & fixing UPVC pipes A- Type and fittings conforming to IS:13592-1992 with all necessary clamps nails, including making holes in walls, floor etc. cutting trenches in any soil through masonry concrete structures etc if necessary and mending good damages including joining with jointing materials (Spun Yarn, Valamoid/Bitumen/M-Seal etc) complete. A) UPVC Pipes: (i) 75 mm. Dia. (P. - 212, Item. No. - 21 (A)(i), (B),(c),(i) & (B), (d),(i), Pwd volume-i, 2017)	30	188.00	Mtr	5640.00
88	B) UPVC Fittings: c) Bend 87.5 degree (i) 75 mm. Dia.	6	<del>84.00</del> 95.00	Mtr	<del>504.00</del>
89	B) UPVC Fittings: d) Shoe (i) 75 mm. Dia.	2	<del>78.00</del> 78.00	Mtr	<del>156.00</del>
90	Constructing Inspection pit of inside measurement 600mm X 600mm X upto 600mm (depth) with 250 mm thick 1st. class brick work in cement mortar (1:4) on all sides, bottom of the pit consisting of 100 mm thick cement concrete (1:3:6) with stone chips over a layer of jhama brick flat soling, 15 mm thick (1:4) cement plaster to inside walls and out-side walls upto G.L. and 20 mm.thick (1:4) plaster to bottom of the pit, providing necessary invert with cement concrete (1:3:6) with stone chips as per direction, neat cement finishing to entire internal surfaces, top of the pit covered with 100 mm thick R.C.C. slab (1:1.5:3) with stone chips and necessary reinforcements upto 1% and shuttering including 6 mm thick cement plaster (1:4) in all external surfaces of the slab and one 560 mm dia. R.C.C. manhole cover of approved make supplied, fitted and fixed in the slab with necessary fittings, necessary earthwork in excavation in all sorts of soil, filling sides of the pit with earth and removing spoils after work complete in all respect with all costs of labour and materials. i) With Pakur variety (Other than SAIL/TATA/RINL). PWD S&P Schedule, S.P.87,Item No-1/(i), 7th Corrigenda Volume ii	7	6471.00	Each	45297.00

91	<p>Construction of septic tank of different capacities as per approved drawing with 1st class brick work in cement mortar (1:4) including two 560 mm dia. R.C.C. manhole cover (heavy type) of approved make supplied, fitted and fixed in the 100mm thick R.C.C. (1:1.5:3) top slab with necessary fittings, 20mm thick cement plaster (4:1) with neat cement finish to the internal surfaces and 15 mm thick cement plaster (4:1) to outside wall upto 200 mm below G.L. floor finished with 25 mm thick grey artificial stone over 100 mm thick R.C.C. (1:1.5:3) bottom slab including supplying, fitting and fixing all necessary specials, fittings, S.W. tees, C.I. foot rest etc. including excavation earth in all sorts of soil, shoring, bailing out and pumping out water as necessary, ramming, dressing the bed and refilling the sides of the tanks with earth, removing spoils, filling up the chamber with clear water, removing foreign materials from the chamber and including constructing attached inspection pit as per approved drawing and connecting all necessary pipes, joints etc. with internal plaster work and artificial stone flooring is to be done with admixture of water proofing compound @ 0.5% by weight of cement with all costs of labour and materials.</p> <p>(iv) For 30 users  A) With Pakur variety. (JSW/JSPL/SHYAM/SRMB/ELECTROSTEEL/SSL)  PWD S&amp;P Schedule, S.P.88, Item No-3(iv)(A) 7th Corrigenda Volume ii</p>	1	82612.00	Each	82612.00
92	<p>Construction of circular soak well 2.5 metre deep in all types of sandy soils with dry brick work upto 1.6 metre from the bottom having 150 mm intermediate cement brick work (1:4) band all round and cement brick work (1:4) upto 0.90 metre from top with 20mm thick cement plastering (1:4) to inside face upto the depth of cement brick work, 15mm thick cement plaster (1:4) on outer face from top of the well upto G.L. and 6 mm thick cement plaster (1:4) on top of the R.C.C. cover slab including filling bottom 1.00 metre of inside of the well with brick metal (50 mm to 63 mm size) including R.C.C. cover slab of 100 mm thick with cement conc (1:1.5:3) with stone chips with necessary reinforcement and shuttering including one 560 mm dia. R.C.C. manhole cover (heavy type) of approved make supplied, fitted and fixed in the cover slab with necessary fittings, making necessary arrangements for pipe connections, excavation of well including shoring, dewatering and removing the excess earth from the premises as per direction complete in all respect with all costs of labour and materials. With 250 mm thick dry brick work and 250 mm thick cement brick work (1:6) and 1.00m inside dia.</p> <p>(Other than SAIL/TATA/RINL)  S.P.89, Item No-4 7th Corrigenda Volume ii</p>	1	15599.00	Each	15599.00
93	<p>(a)  Supplying, fitting and fixing towel rail with two brackets.  C.P. over brass  mm dia. and 600 mm long  Schedule, p No 82 I No- 22 (a)(ii)</p>	16	430.00	Each	6880.00
94	<p>(ii) 25  PWD S&amp;P  Supplying, fitting and fixing bevelled edged mirror 5.5 mm thick silver red as per I.S. 3438 / 1965 together with brass C.P. hinges (ii) 600 mm X 450 mm  PWD S&amp;P Schedule, P-81, It-15(ii)</p>	6	484.00	Each	2904.00
95	<p>(b) Fibre glass  Supplying, fitting and fixing soap holder.  Sanitary and plumbing work schedule P-82, It-18(b)</p>	10	58.00	Each	580.00

a) Ordinary type with 5.5 mm sheet glass x 125 mm Sanitary and plumbing work schedule P-81, It-16(a)(i)	(i) 450 mm	15 5	341.00	Each	5115.00 1705.00
1680015.84 ←	Sub Total Of (A)				1687458.03
151795.43 ←	Add S.G.S.T. @		9%	151871.22	
151795.43 ←	Add C.G.S.T. @		9%	151871.22	
1990206.70 ←	Cost Of Civil & Sanitary Work			1991200.47	
199020.07 ←	Add L.W.C. @		1%	19912.00	
2010108.77 ←	Total payable Amount Including L.W.C.			2011112.47	
59706.20 ←	Add Contengency @3%			59736.01	
2069814.97 ←	Total payable Amount Including L.W.C. and contengency			2070848.48	
2069815.00 ←	Say Rs.			2070848.00	

  
 21/05/25.  
 Sub Assistant Engineer,  
 Dinhata Municipality

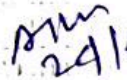
  
 22/05/25  
 Chairman  
 Dinhata Municipality

  
 23/06/25  
 Junior Engineer  
 Cooch Behar Division M.E. Dte.  
 Govt. of West Bengal

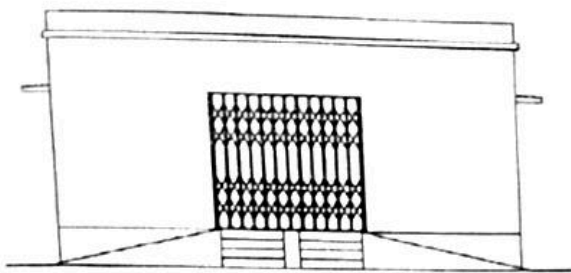
MAY BE VETTED

  
 23/06/25  
 Assistant Engineer  
 Cooch Behar Division M.E. Dte  
 Govt. of West Bengal

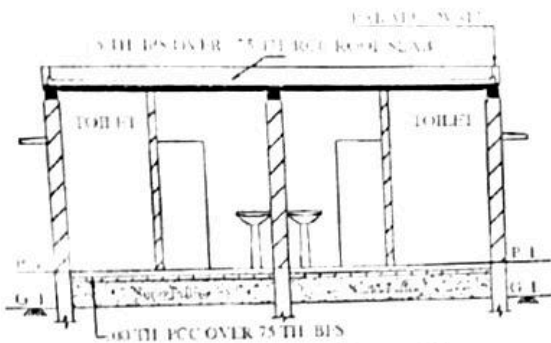
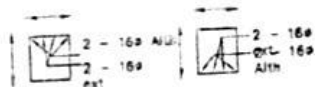
VETTED

  
 24/6/25  
 Executive Engineer  
 Cooch Behar Division M.E. Dte.  
 Govt. of West Bengal

# MODEL DRAWING FOR CONSTRUCTION OF C. T./P.T. Toilet Seats - 8 Nos, Urinal 14 nos MODEL NO. - B



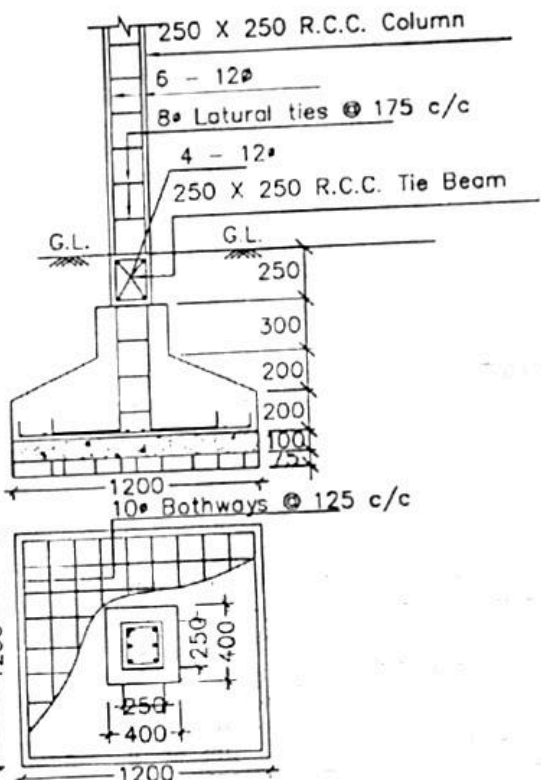
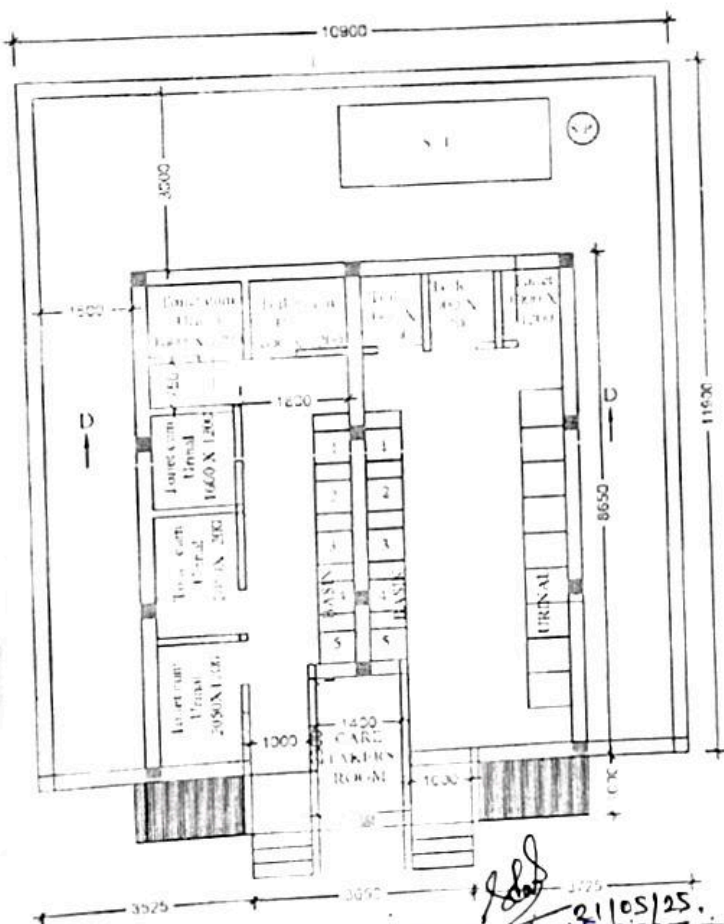
FRONT ELEVATION



SECTION - 'B - B'



Details Of R.C.C Roof Slab & Beam  
(SCALE - 1 : 25)



DETAILS OF R. C. C COLUMN  
(SCALE - 1 : 25)

21/05/25.  
Sub Assistant Engineer  
Dinhata Municipality

22/05/25  
Chairman  
Dinhata Municipality

Checked & Verified  
23/06/25  
Engineer (Civil)  
Hijli INSPIRATION



23/06/25  
Junior Engineer  
Coach Behar Division M.E. Dte  
Govt. of West Bengal

23/06/25  
Assistant Engineer  
Coach Behar Division M.E. Dte  
Govt. of West Bengal

**CONSTRUCTION OF TOILET BLOCK (CT/PT) MODEL NO - 8,  
TOILET SEATS- 8 NOS URINAL -14 NOS , NONSCHEDULE ITEMS.**

S.L.NO	Item Description & Item No.	Quantity	Rate	Unit	Amount
1	Non Schedule Item Sl. No: 91-106 ( Order as per SUDA) standard plastic dustbin (12lits)	6	350	Each	2100.00
2	Signage APC based & Reflective vinyl	5	3776	each	18880.00
3	Supplying and fixing signage with fixing stand post for public toilet for visible to passersby	5	1000	Each	5000.00
4	Glow sign board Name and contact details of the following are displayed prominently - Toilet identification number, name of ULB under which jurisdiction toilet is covered, ward number and maintenance authority prominently displayed for each toilet block supervisor, supervisor's agency and area sanitary inspector.	1	5000	each	5000.00
5	Installation of Signage	1	2071	each	2071.00
6	Air freshner(pack of 4nos)	12	216	Each	2592.00
7	Air freshner (Naphthaline 250 gm)	8	210	Each	1680.00
8	Supplying paper Napkin	8	50	Each	400.00
9	Supplying Sanitary Napkin ( Whisper or similar make 50 pcs )	5	520	Each	2600.00
10	Harpic (Blue 500 ml)	8	300	Each	2400.00
11	Harpic (Red 500 ml)	8	150	Each	1200.00
12	Gala double lip floor wiper	4	350	Each	1400.00
13	Colin glass or surface cleaner	5	200	Lit	1000.00
14	Muratic Acid	8	145	Lit	1160.00
15	Bleaching powder	8	120	Kg	960.00
16	Detol, lifeboy or similar make liquid soap	8	140	Lit	1120.00
17	Rubber hand gloves	6	80	Pair	480.00
18	Double side plastic brush	6	125	Each	750.00
19	Plastic Broom	4	170	Each	680.00
20	SMS/any other ICT based feedback system ( With number displayed on which SMS has to be sent )	1	5000	each	5000.00
21	Mini Tulu Pump	1	4000	Each	4000.00
22	supplying roaster /register for keeping account of regular cleaning	3	200	Each	600.00
23	lettering on Toilet Wall for display of name and contact details of ULB ward number and name of maintenance authority, sanitinspector, etc.	1	1000	each	1000.00
<b>TOTAL</b>					<b>66073.00</b>
Add for Labour Welfare Cess @ 1%					<b>621.00</b>
Total:- Rs.					<b>66694.00</b>
Add for Contingency @ 3%					<b>2001.00</b>
TOTAL:- Rs.					<b>68695.00</b>

**NETTED**

**MAY BE VETTED**

Sub Assistant Engineer,  
Dinhatia Municipality  
21/05/25

Junior Engineer,  
Coch Behar Division M.E. Die  
Govt. of West Bengal  
22/05/25

Assistant Engineer,  
Coch Behar Division M.E. Die  
Govt. of West Bengal  
22/05/25

Chairman,  
Dinhatia Municipality

Executive Engineer,  
Coch Behar Division M.E. Die  
Govt. of West Bengal  
22/05/25

NETTED  
22/05/25

**NAME OF WORK:- ESTIMATE FOR ELECTRICAL WORK OF PUBLIC TOILET AT DINHATA HIGH SCHOOL WARD NO. 06 UNDER DINHATA MUNICIPALITY OF WEST BENGAL (MODEL NO - B)  
[ASPIRATIONAL PARAMETER]**

\* As per PWD & I & WD schedule district charges will be applicable on PWD & I & WD schedule items

\* No district charges will be applicable on non-schedule items

Sl No.	Item Description	Unit	Quantity	Rate	Amount	Remarks
1	Distribution wiring in 2 x 22/0.3 (1.5 sqmm) single core stranded 'FR' PVC insulated & unsheathed copper wire (Brand approved by EIC) in 20mm size PVC rigid conduit 'FR' ( <b>Precision make</b> ), with 1x22/0.3 (1.5 sqmm) single core stranded 'FR' PVC insulated & unsheathed copper wire for ECC, to light/fan/call bell points with Piano Key type switch fixed on MS CRC sheet metal (16 SWG) switch board cum JB on wall complete with 2 no. suitable size "Ph & N" copper bar incl. bakelite/Perspex (wall matching color) top cover 3 mm thick and incl. 175mmx100mmx65mm inspection box, making earthing attachment, painting the MS box and mending good the damages to original finish. [PWD Schedule Page No-E-14 Item No-2a]	Point	28	673.20	18849.60	ADD DISTRICT CHARGES
	Average run 5 mtr					
2	Distribution wiring in 1.1 KV grade 22/0.3 (1.5 sqmm) single core stranded 'FR' PVC insulated & unsheathed copper wire (Brand approved by EIC) in 20mm size PVC rigid conduit 'FR' ( <b>Precision make</b> ), with 1.1 KV grade 1 x 22/0.3 (1.5 sqmm) single core stranded 'FR' PVC insulated & unsheathed copper wire as ECC, to 5A 3 pin flush type plug socket & Piano Key type switch fixed on MS CRC sheet metal (16 SWG) switch board cum JB on wall incl. bakelite/Perspex (wall matching color) top cover 3 mm thick and incl. painting the MS box and mending good the damages to original finish <b>On Board (only for pay counter)</b> [PWD Schedule Page No-E-15; 1-4a]	Point	1	73.70	73.70	ADD DISTRICT CHARGES
3	Supplying and fixing 240V 32A Double Pole AC Type 30mA RCCB.(Complete Set) (ISI marked) [Make- Legrand] (Cat No 4113/95) [Legrand Page No-92]	Nos	1	5942.00	5942.00	NO DISTRICT CHARGES

4	Distribution wiring in 1.1 KV single core stranded 'FR' PVC insulated & unsheathed copper wire (Brand approved by EIC) in 20mm size PVC rigid conduit 'FR' (Precision make) incl. necy. fittings as required 2 x 36/0.3 (2.5 sqmm) + 1 x 22/0.3 (1.5 sqmm) ECC [PWD Schedule Page No-E-14 Item No-1a(ii)]	mtr	25	130.90	3272.50	ADD DISTRICT CHARGES
5	Supplying and fixing double-door SPN MCB Distribution Board with IP-42/43 protection, concealed in wall after cutting the wall & mending good the damages to original finish incl. Inter connection with suitable size of copper wire and neutral link & provision for earthing attachment. a) For (2+6 way) (Make -Havells) [PWD Schedule Page No-D-9;Item No-13]	No	1	1180.30	1180.30	ADD DISTRICT CHARGES
6	Supplying and fixing 240/415 V MCB of Breaking capacity 10kA & C characteristics on din rail of existing DBs and necessary connection 6-32A SP MCB (Make -Havells) [PWD Schedule Page No-D-6;Item No-7]	Nos	6	184.80	1108.80	ADD DISTRICT CHARGES
7	Supplying and fixing 240/415 V MCB Isolator on din rail of existing DBs and necessary connection. 40A DP MCB Isolator (Make -Havells) [PWD Schedule Page No-D-5;Item No-6]	Nos	1	228.80	228.80	ADD DISTRICT CHARGES
8	Supply of TMC501 conventional industrial batten (Philips make) LED Tube,model no-TMC501 P1xT-LED 22W P3241 (WB I & WD schedule P-113, I- 5:3 F.22)	Nos	8	464.53	3716.24	ADD DISTRICT CHARGES
9	Fixing only single/twin fluroscent light fitting complete with all accessories directly on wall/ceiling by screws etc.. [PWD Schedule Page No-C-2;Item No-14a]	Nos	8	94.60	756.80	ADD DISTRICT CHARGES

10	Supply & fixing Bulk head light fittings with die cast aluminium housing frosted/clear glass on wall/ceiling incl S/F 9 watt LED Lamp complete set. [Make - Havells] (PWD sch - Page--D-13, I-23)	Nos	10	711.90	7119.00	ADD DISTRICT CHARGES
11	Supply & fixing smart bright street light complete with all accessories to be fixed from the wall of building or on pole incl. making holes /providing clamping arrangement & necy. GI reducer as required.S&F 40 mm GI Pipe 1.5 mtr average length & s&f necy length of 1.5 sqmm pvc insulated single core copper wire & making connections as required & mending good damages incl wall painting. (30 Watt) (Make - Bajaj) [WB I&WD sch P-111, I-f.9.0.2]	Nos	2	3106.48	6212.96	ADD DISTRICT CHARGES
12	Supply of 12" domestic metal exhaust fan 12" 230V 50 Hz SWEEP. TRANS AIR - ( Make-Crompton/Havells/Bajaj) (UD & MA schedule P-14, I-5))	Nos	6	2093.00	12558.00	NO DISTRICT CHARGES
13	Fixing only exhaust fan after making hole in wall and making good damages and smooth cement finish etc. as practicable as possible and providing necy. length of PVC insulated wire and making connection for exhaust of following diameter: 30 cm ( 12" ) [PWD Schedule Page No-C-4;Iteam No-28(b)]	Nos	6	361.90	2171.40	ADD DISTRICT CHARGES
14	Fixing only louver shutter/cowl on wall with necy. bolts & nuts (6 mm dia x 62 mm long) For 30 cm(12") Exhaust fan [PWD Schedule Page No-C-4;Iteam No-30(b)]	Nos	6	121.00	726.00	ADD DISTRICT CHARGES
15	S/F 240V 25A Modular type starter (brand approved by EIC)with 25 A. Modular switch DP MCB (C-Curve)and 4 Module G.I. Moduar type switch board with 4 Module Top Cover Plate flushed in wall incl. S/F switch board and Cover Plate and making necy. Connections with PVC Copper wire and earth connectivity wire etc. as per schedule [for Pump] [PWD Schedule Page No-E-19, Item No-17] (Please follow in details)	Nos	1	862.40	862.40	ADD DISTRICT CHARGES



20	Earthing installation by GI earth Spike (1830 X 20 mm) including 8SWG GI EarthWire & GI nuts, bolts, washer etc.	Nos	1	450.00	450.00	NO DISTRICT CHARGES
				Total	75946.30 ✓	
				Add 18% GST	13670.33 ✓	
				Total With GST (A)	89616.63 ✓	
				Cess@1%	896.17 ✓	
				total	90512.80 ✓	
	Contingency Amount on "A"			Contingency@3%	2688.50 ✓	
	(Total+GST)=Rs:			Total	93201.30 ✓	
				Say Rs.	93201.00 ✓	
Service Connection Charges as per Quotation						

*[Signature]*  
19/02/25.  
Sub Assistant Engineer  
Dinhata Municipality

*[Signature]*  
19/02/25  
Chairman  
Dinhata Municipality

Say Rs. 93,201.00

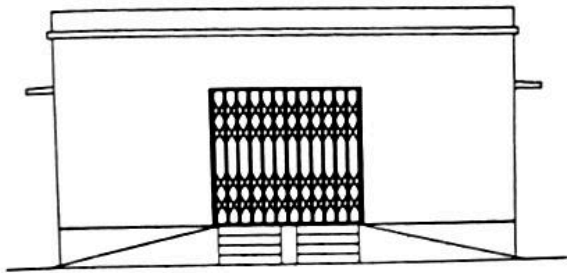
Technically Vetted Rs.:...93,201.00  
(Rupees Ninety Three Thousand Two Hundred One .

*[Signature]*  
05-03-25  
Junior Engineer  
Electrical & Mechanical Division  
SUDA

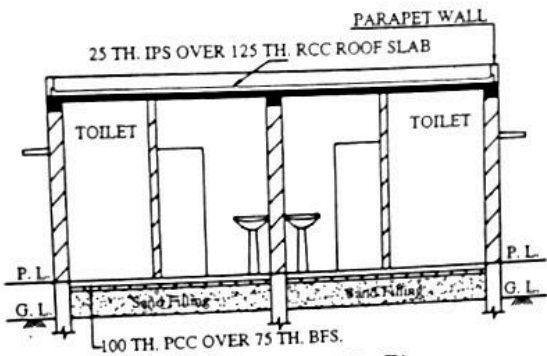
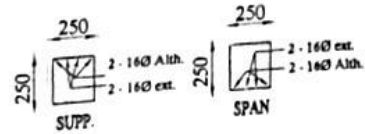
*[Signature]*  
5/3/25  
ASSISTANT ENGINEER  
ELECTRICAL & MECHANICAL DIVISION  
SUDA

*[Signature]*  
5/3/25  
Executive Engineer (E/M)  
O/O the Secretary M.E. Dto.  
Government of West Bengal

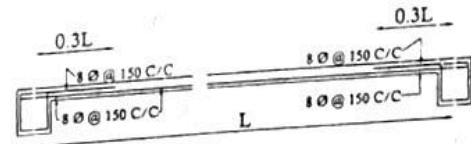
Construction of the Public Toilet Block for Dinhata High School at ward no-06 under Dinhata Municipality. ( Model 'B' )



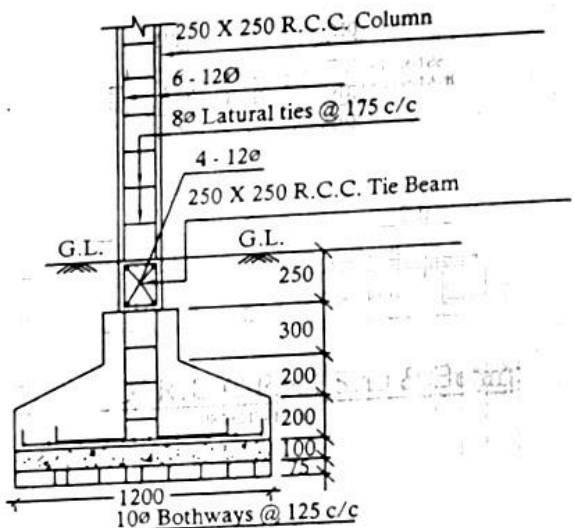
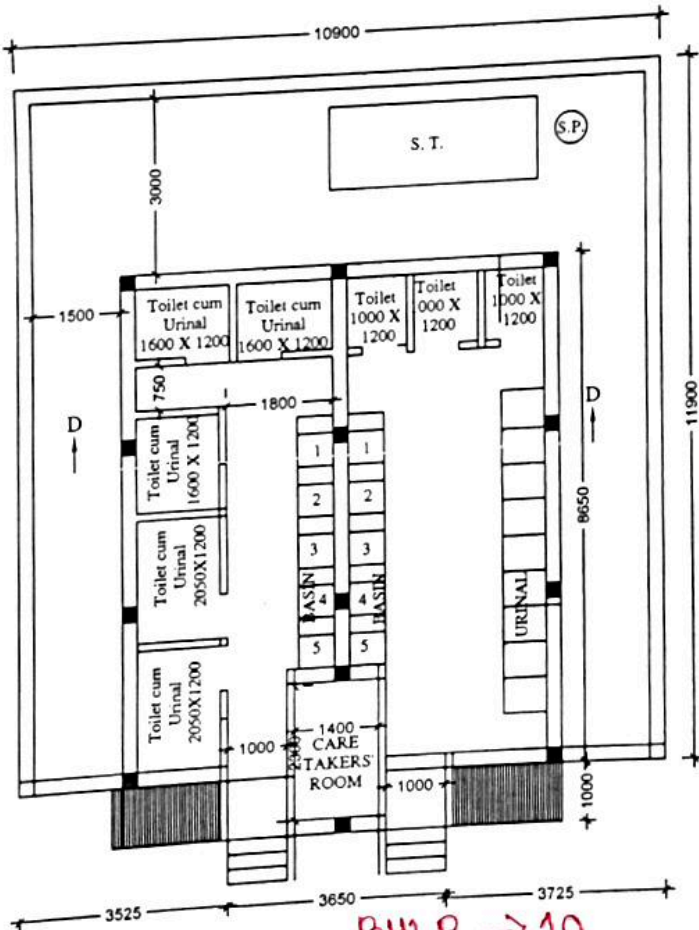
FRONT ELEVATION



SECTION - 'B - B'



Details Of R.C.C Roof Slab & Beam (SCALE - 1 : 25)



DETAILS OF R. C. C COLUMN (SCALE - 1 : 25)

- BHLP → 10
- TL → 08
- EF → 06
- OL → 02
- CF → 01
- GSB → 01

*[Signature]*  
19/02/25.  
Sub Assistant Engineer  
Dinhata Municipality

*[Signature]*  
19/02/25  
Chairman  
Dinhata Municipality

All Dimensions are in Millimeter