

KONNAGAR MUNICIPALITY

CONSTRUCTION OF TOILET BLOCK (CT/PT) MODEL NO - F CIVIL WORKS

**TOILET SEATS - 2 NOS AND URINAL - 3 NOS. AT KONNAGAR DWADAS MANDIR GHAT , WARD - 06 UNDER
KONNAGAR MUNICIPALITY.**

SL.NO	Item Description & Item No.	NO.	LENGTH (Mtr.)	WIDTH (Mtr.)	HEIGHT (Mtr.)	Unit	Quantity
1	Earth work in excavation of foundation trenches or drains, in all sorts of soil (including mixed soil but excluding laterite or sandstone) including removing, spreading or stacking the spoils within a lead of 75 m. as directed. The item includes necessary trimming the sides of trenches, levelling, dressing and ramming the bottom, bailing out water as required complete. (a) Depth of excavation not exceeding 1,500 mm. PWD Building Works schedule Page - 1, Item -2.a	4.00	1.200	1.200	1.125	Cu.m	6.480
	OUT SIDE STAIR PARTITION WALL	1.00	1.000	0.375	0.200	Cu.m	0.075
	TIE BEAM	2.00	4.600	0.300	0.125	Cu.m	0.345
		3.00	2.575	0.300	0.125	Cu.m	0.290
		1.00	1.850	0.300	0.125	Cu.m	0.069
		1.00	1.375	0.300	0.125	Cu.m	0.052
		1.00	1.325	0.300	0.125	Cu.m	0.050
	TOTAL QUANTITY						Cu.m
2	Earth work in filling in foundation trenches or plinth with good earth, in layers not exceeding 150 mm. including watering and ramming etc. layer by layer complete. (Payment to be made on the basis of measurement of finished quantity of work). 1/5 OF EXCAVATION (a) With earth obtained from excavation of foundation. PWD Building Works schedule, Page - 1, Item -3.a					CUM.	1.472
3	(A) Filling in foundation or plinth by silver sand in layers not exceeding 150 mm as directed and consolidating the same by thorough saturation with water, ramming complete including the cost of supply of sand. (payment to be made on measurement of finished quantity) PWD Building Works schedule, Page - 2, Item -4.a	1.00	4.850	2.825	0.425	Cum	5.823
	BELOW TIE BEAM	2.00	4.600	0.300	0.050	Cum	0.138
		3.00	2.575	0.300	0.050	Cum	0.116
		1.00	1.850	0.300	0.050	Cum	0.028
		1.00	1.375	0.300	0.050	Cum	0.021
		1.00	1.325	0.300	0.050	Cum	0.020
	TOTAL QUANTITY						Cum
4	Single Brick Flat Soling of picked jhama bricks including ramming and dressing bed to proper level and filling joints with local sand. PWD Building Works schedule, Page- 14, Item - 1 (Corri. Page-01, Date-04-06-2018)	4.00	1.200	1.200	0.00	Sqm	5.760
	FLOOR	1.00	4.350	2.575	0.00	Sqm	11.201
	Tie Beam	2.00	4.600	0.25	0.00	Sqm	2.300
		3.00	2.575	0.25	0.00	Sqm	1.931
		1.00	1.850	0.25	0.00	Sqm	0.463
		1.00	1.375	0.25	0.00	Sqm	0.344
		1.00	1.325	0.25	0.00	Sqm	0.331
	OUT SIDE STAIR	1.00	1.50	0.75	0.00	Sqm	1.125
	TOTAL QUANTITY						Sqm

SL.NO	Item Description & Item No.	NO.	LENGTH (Mtr.)	WIDTH (Mtr.)	HEIGHT (Mtr.)	Unit	Quantity
5	Ordinary Cement concrete (mix 1:1.5:3) with graded stone chips (20 mm nominal size) excluding shuttering and reinforcement, if any, in ground floor as per relevant IS codes. a) Pakur Variety / Chandil Variety PWD Building Works schedule, p-26 Item 10 a (Rate Analysis)						
	COLUMN BASE	4.000	1.200	1.200	0.10	Cum.	0.576
	(1.2x1.2x0.2)=0.288 cum. 1/3x(0.16+1.44+1.26)x0.2=0.190 TOTAL VOLUME OF CONCRETE = (0.288+0.190)= 0.478 Cum.	4.000	0.478			Cum.	1.912
	Base	4.000	0.300	0.400	0.40	Cum.	0.192
		4.000	0.250	0.250	3.325	Cum.	0.831
	Tie Beam	2.00	4.600	0.250	0.250	Cum.	0.575
		3.00	2.575	0.250	0.250	Cum.	0.483
		1.00	1.850	0.250	0.250	Cum.	0.116
		1.00	1.375	0.250	0.250	Cum.	0.086
		1.00	1.325	0.250	0.250	Cum.	0.083
	Roof Beam	3.00	4.600	0.250	0.250	Cum.	0.863
		3.00	2.575	0.250	0.25	Cum.	0.483
	Roof	1.00	4.850	2.825	0.13	Cum.	1.713
	CHAJJA	3.00	0.650	0.450	0.08	Cum.	0.066
	LINTEL FOR CHAJJA	7.00	1.000	0.250	0.15	Cum.	0.263
		TOTAL QUANTITY			Cum.	8.240	
6	25mm. thick damp proof course with cement concrete with stone chips (1:1.5:3) [with graded stone aggregate 10 mm nominal size] and admixture of water proofing compound as per manufacturer's specification followed by two coat of polymer based paint, (1st coat after 4 to 5 days of concrete laying and 2 nd coat just before brick masonry work) as directed (cost of water proofing compound & polymer based paint to be paid separately). (Chequering not required over concrete or painted surface). [Note: - Waterproofing as per item 9, polymer based paint as per item 8 (a) of subhead C of Section (C). PWD Building Works schedule, Page -47, Item -1 (Rate Analysis)	2.00	4.85	0.25	0.00	Sqm	2.425
		3.00	2.825	0.25	0.00	Sqm	2.119
		1.00	1.325	0.25	0.00	Sqm	0.331
		1.00	2.725	0.25	0.00	Sqm	0.681
			TOTAL QUANTITY			Sqm	5.556
7	Brick work with 1st class bricks in cement mortar (1:4) (a) Foundation and plinth ground floor PWD Building Works schedule, Page -15, Item-7.a (Rate Analysis)	2.00	4.350	0.25	0.6	Cum.	1.305
		3.00	2.575	0.25	0.6	Cum.	1.159
		1.00	1.600	0.25	0.6	Cum.	0.24
		1.00	1.125	0.25	0.6	Cum.	0.169
		1.00	1.200	0.25	0.6	Cum.	0.180
	FRONT STAIR	1.00	1.75	0.25	0.75	Cum.	0.328
		TOTAL QUANTITY			Cum.	3.381	
8	Brick work with 1st class bricks in cement mortar (1:4) (b) superstructure ground floor PWD Building Works schedule, Page -15, Item-7.b (Rate Analysis)	2.00	4.350	0.25	2.725	Cum.	5.927
		3.00	2.325	0.25	2.725	Cum.	4.752
			TOTAL QUANTITY			Cum.	10.679
	LESS DOOR AND WINDOW	3.00	0.60	0.25	0.45	Cum.	0.203
	Collapsible gate	2.00	1.00	0.25	2.1	Cum.	1.05
			TOTAL QUANTITY			Cum.	9.426

SL.NO	Item Description & Item No.	NO.	LENGTH (Mtr.)	WIDTH (Mtr.)	HEIGHT (Mtr.)	Unit	Quantity
9	125 mm brick work with 1st class bricks in cement mortar (1:4) in ground floor. PWD Building Works schedule, Page -16, Item-16, cori page -3, date -04.06.2018 (Rate Analysis)	1.00	1.60	0.00	2.725	Sq.M.	4.360
		1.00	1.20	0.00	3.00	Sq.M.	3.600
		1.00	1.125	0.00	2.725	Sq.M.	3.066
	PARAPATE WALL	2.00	4.850	0.00	0.300	Sq.M.	2.910
		2.00	2.285	0.00	0.300	Sq.M.	1.371
	LESS DOOR	2.00	1.95	0.00	0.75	Sq.M.	2.925
			TOTAL QUANTITY			Sq.M.	12.382
10	Hire and labour charges for shuttering with centering and necessary staging upto 4 m using approved stout props and thick hard wood planks of approved thickness with required bracing for concrete slabs, beams and columns, lintels curved or straight including fitting, fixing and striking out after completion of works (upto roof of ground floor) (f) 25 mm to 30 mm shuttering without staging in foundation PWD Building Works schedule, Page -42, Item- 36.f						
	FOUNDATION	4	0.3	0	1.6	SQM.	1.920
	TIE BEAM	2	4.85	0	0.5	SQM.	4.850
		2	2.825	0	0.5	SQM.	2.825
		1	2.325	0	0.5	SQM.	1.163
		1	1.325	0	0.5	SQM.	0.663
		1	3.225	0	0.5	SQM.	1.613
			TOTAL QUANTITY			SQM.	13.033
11	Hire and labour charges for shuttering with centering and necessary staging upto 4 m using approved stout props and thick hard wood planks of approved thickness with required bracing for concrete slabs, beams and columns, lintels curved or straight including fitting, fixing and striking out after completion of works (upto roof of ground floor) (a) 25 mm to 30 mm thick wooden shuttering as per decision & direction of Engineer-In-Charge. PWD Building Works schedule, Page -42, Item- 36.a	4	1	0	2.725	Sqm,	10.900
	ROOF	1	4.85	2.825	0	Sqm,	13.701
	Beam	3	4.85	0	0.50	Sqm,	7.275
		6	4.85	0	0.50	Sqm,	14.550
		3	2.325	0	0.50	Sqm,	3.488
		6	2.325	0	0.50	Sqm,	6.975
			TOTAL QUANTITY			Sqm,	56.889
12	Supplying and laying polythine sheet (150 gm/sq.m) over dampproof course or below flooring or roof terracing or foundation or foundation trenches. PWD Building Works schedule, Page -47, Item-3		(13.033+40.745)=53.778			Sq.M.	69.921
	FLOOR	1.00	4.350	2.325	0.00	Sq.M.	10.114
			TOTAL QUANTITY			Sq.M.	80.035
13	Reinforcement for reinforced concrete work in all sorts of structures including distribution bars, stirrups, binders etc initial straightening and removal of loose rust (if necessary), cutting to requisite length, hooking and bending to correct shape, placing in proper position and binding with 16 gauge black annealed wire at every intersection, complete as per drawing and direction. (a) For works in foundation and upto roof of ground floor/upto 4 m. (i) Tor steel/Mild Steel , JSPL/SWAYN/ELETRO/STEEL PWD Building Works schedule, Page - 43, Item - 40.a.i.1(Corri. 10th Page-01, Date-23-01-2020) (Rate Analysis) Item no , vol of conc. $8.24 \times 1.20 \% = 0.099 \text{ m}^3 \times 7850.0 \text{ Kg./M}^3 = 777.15 \text{ Kg.}$ $777.15 \text{ kg} = 0.777 \text{ MT}$					M.T.	0.777

SL.NO	Item Description & Item No.	NO.	LENGTH (Mtr.)	WIDTH (Mtr.)	HEIGHT (Mtr.)	Unit	Quantity
14	Collapsible gate with 40 mm x 10 mm x 6 mm Tee as top and bottom guide rail , 20 mm x 10 mm x 2 mm vertical channels 100 mm apart in full stretched position 20m x 5 mm MS flats as collapsible bracings properly reveted and washered including 38 mm steel roller including locking arrangements , fitted and fixed in position with lugs set in cement concrete including cutting necessary hives chasing etc in walls , floors etc and making good all damages . PWD Building Works schedule, Page -106, Item- .18 2 x 1.00 x 2.10 = 4.20 m2	2.00	1.00	0.00	2.10	Sqm	4.200
15	Labour for Chipping of concrete surface before taking up Plastering work. PWD Building Works schedule, P-192, It-1	1.00	4.35	2.33	0.00	Sqm	10.114
16	Plaster (to wall, floor, ceiling etc.) with sand and cement mortar including rounding off or chamfering corners as directed and raking out joints including throating, nosing and drip course, scaffolding/staging where necessary (Ground floor).[Excluding cost of chipping over concrete surface] (i) With 1:6 cement mortar (b) 20 mm thick plaster (Out side) PWD Building Works schedule, P-189 It- No. 1 (b) (Rate Analysis)	2.00	4.850	0.000	3.600	Sqm	34.920
		2.00	2.825	0.00	3.60	Sqm	20.340
	PARAPATE WALL	4.00	4.850	0.00	0.725	Sqm	14.065
		4.00	2.825	0.00	0.725	Sqm	8.193
	TOTAL QUANTITY					Sqm	77.518
	LESS DOOR WINDOW	2.00	1.00	0	2.1	Sqm	4.200
		3.00	0.60	0	0.45	Sqm	0.810
					TOTAL QUANTITY	Sqm	72.508
17	Plaster (to wall, floor, ceiling etc.) with sand and cement mortar including rounding off or chamfering corners as directed and raking out joints including throating, nosing and drip course, scaffolding/staging where necessary (Ground floor).[Excluding cost of chipping over concrete surface] (i) With 1:6 cement mortar (c) 15 mm thick plaster (Inside) PWD Building Works schedule, P-189 It- No. 1 (i)(c) (Rate Analysis)	2.00	4.350	0.00	0.80	Sqm	6.960
		4.00	2.325	0.00	0.80	Sqm	7.440
		2.00	1.200	0.00	0.80	Sqm	1.920
		2.00	1.600	0.00	0.80	Sqm	2.560
		2.00	1.000	0.00	0.80	Sqm	1.600
	TOTAL QUANTITY					Sqm	20.480
	LESS DOOR & WINDOW	3.00	0.60	0	0.45	Sqm	0.810
	2.00	0.75	0.00	1.95	Sqm	2.925	
					TOTAL QUANTITY	Sqm	16.745
18	Plaster (to wall, floor, ceiling etc.) with sand and cement mortar including rounding off or chamfering corners as directed and raking out joints including throating, nosing and drip course, scaffolding/staging where necessary (Ground floor).[Excluding cost of chipping over concrete surface] (ii) With 1:4 cement mortar (c) 10 mm thick plaster (Ceiling) PWD Building Works schedule, P-189 It- No. 1 (ii)(c) (Rate Analysis)	1.00	4.350	2.325	0.00	Sqm	10.114
19	Neat cement punning about 1.5 mm thick in wall ,dado, window sills, floors etc . Note cement 0.152 m3/100 m2 PWD Building Works schedule, P-192 It- No. 15 G.L TO P.L	2.00	4.85	0.00	0.60	Sq.m	5.820
		2.00	2.825	0.00	0.60	Sq.m	3.390
						TOTAL QUANTITY	Sq.m

SL.NO	Item Description & Item No.	NO.	LENGTH (Mtr.)	WIDTH (Mtr.)	HEIGHT (Mtr.)	Unit	Quantity
20	Supplying, fitting and fixing fibre reinforced polymer (FRP) Composite door frame as per approved section with glass fibre reinforced plastic moulded skins and a special sandwich core, so as to impart monolithic composite structure as per approved technology of Department of Science and Technology (DST) to satisfy IS: 4020 door testing performance criteria.. (i) 66mm x 90mm PWD Building Works schedule, P-115, It - 3 (i)	4.00	1.95	0.00	0.00	Mtr	7.800
		2.00	0.75	0.00	0.00	Mtr	1.500
		TOTAL QUANTITY				Mtr	9.300
21	Supplying, fitting & fixing fibre reinforced polymer (FRP) Composite door shutters as per approved design with glass fibre reinforced plastic moulded skins and a special sandwich core, so as to impart monolithic composite structure as per approved technology of Department of Science and Technology (DST) to satisfy IS:4020 door testing performance criteria. In ground floor. ii) 25 mm thick P-125, It- 14(ii)	2.00	1.95	0.00	0.75	Sqm	2.925
22	Anodised aluminium barrel / tower / socket bolt (full covered) of approved manufactured from extruded section conforming to I.S. 204/74 fitted and fixed with cadmium plated screws . (vii) 225mm long x 10mm dia. bolt. PWD Building Works schedule, P-144, It No. 26 (vii)	6.00				Nos.	6.000
23	Iron butt hinges of approved quality fitted and fixed with steel screws, with ISI mark. (viii) 100mm X 75mm X 3.50mm. PWD Building Works schedule, P-140, It No. -5 (viii)	40.00				Nos.	40.000
24	Anodised aluminium decorative handle (hexagonal / fluted) of approved quality fitted and fixed complete. (i) 150mm plate x 10mm dia rod x 12mm hexagonal/fluted. PWD Building Works schedule, Page -146 . Item no-31,(i)	4.00				Nos.	4.000
25	Iron hasp bolt of approved quality fitted and fixed complete (oxidised) with 16mm dia rod with concrete bolt and round fitting. .b)250mm long. PWD Building Works schedule, Page -141 . Item no-10 b)	2.00				Each	2.000
26	Supplying and laying true to line and level vitrified tiles of approved brand (size not less than 600 mm X 600 mm X 10 mm thick) in floor, skirting etc. set in 20 mm sand cement mortar (1:4) and 2 mm thick cement slurry back side of tiles using cement @ 2.91Kg./sqM or using polymerised adhesive (6 mm thick layer applied directly over finished artificial stone floor/Mosaic etc without any backing course) laid after application slurry using 1.75 Kg of cement per sqM below mortar only, joints grouted with admixture of white cement and colouring Pigment to match with colour of tiles / epoxy grout materials of approved make as directed and removal of wax coating of top surface of tiles with warm water and polishing the tiles using soft and dry cloth upto mirror finish complete including the cost of materials, labour and all other incidental charges complete true to the manufacturer's specification and direction of Engineer-in-Charge. (White cement, synthetic adhesive and grout material to be supplied by the contrr[e) I (I) With application slurry @1.75 kg/ Sq.m, 20 mm sand cement mortar (1:4) & 2 mm thick cement slurry at back side of tiles, 0.2 kg/ Sq.m white cement for joint filling with pigment. (A) Deep Colour & White PWD Building Works schedule, Page-66 Item-36 (A)	1	4.35	2.325	0.00	Sqm.	10.114

SL.NO	Item Description & Item No.	NO.	LENGTH (Mtr.)	WIDTH (Mtr.)	HEIGHT (Mtr.)	Unit	Quantity	
27	Supplying and laying chequered tiles of any shade and of approved quality with (1:1.5:3) cement concrete laid in pannels or patterns as directed in pavement, footpath etc including necessary underlay 25 mm thick (avg) cement mortar (1:3) complete in all respect with all labour and materials. (Using cement slurry @4.4kg/sq.m at back side and @2.4 kg/sq.m for joint filling). PWD Building Works schedule, Page -74 , Item no- 46(i). 25 mm thick	6	0.75	0.250	0.00	Sqm.	1.125	
		3	1.75	0.250	0.00	Sqm.	1.313	
		TOTAL QUANTITY				Sqm.	2.438	
28	Supplying, fitting & fixing 1st quality Ceramic tiles in walls and floors to match with the existing work & 4 nos. of key stones (10mm) fixed with araldite at the back of each tile & finishing the joints with white cement mixed with colouring oxide if required to match the colour of tiles including roughening of concrete surface, if necessary or by synthetic adhesive & grout materials etc. B) Wall Area of each tile above 0.09 Sq.m ii) Other than Coloured decorative including white PWD Building Works schedule, page-64, Item:35,(B.) (b).(ii) (3rd Corrigendam, Page 36)	2.00	4.350	0.00	2.10	Sqm	18.270	
		4.00	2.325	0.00	2.10	Sqm	19.530	
		2.00	1.200	0.00	2.10	Sqm	5.040	
		2.00	1.600	0.00	2.10	Sqm	6.720	
		2.00	1.000	0.00	2.10	Sqm	4.200	
		TOTAL QUANTITY					53.760	
		LESS DOOR & WINDOW	2.00	1.950	0.75	0.00	Sqm	2.925
		TOTAL QUANTITY				Sqm	50.835	
29	Applying interior grade Acrylic Primer of approved quality and brand on plastered and concrete surface old or new surface to receive Distemper Acrylic emulsion paint including scraping and preparing the surface thoroughly, complete as per manufacturer's specification and as per direction of the E-I-C (Ground Floor) (b) Two Coats PWD Building Works schedule, Page -196 , Item no- 7(b)(i) AREA SAME AS INSIDE PLASTER & CELLING AREA					m2	26.859	
30	Dry Destempering interial walls or ceiling including cleaning, washing, smoothening surface (b) two coats PWD Building Works schedule, Page -196 , Item no- 9(b)					m2	26.859	
31	Rendering the Surface of walls and ceiling with White Cement base WATER PROOF wall putty of approved make & brand.(1.5 mm thick) In Ground Floor PWD Building Works schedule, PWD, P- 198, I - 5					m2	26.859	
32	Applying exterior grade Acrylic Primer of approved quality and brand on plastered or concrete surface old or new surface to receive Decorative Textured (Marrr Finish) or Smooth Finish Acrylic exterior emulsion paint including scraping and preparing the surface thoroughly, complete as per manufacturer's specification and as per direction of the EIC in Ground Floor (b) two coats. PWD Building Works schedule, Page -196 , Item no- 8(b) AREA SAME AS OUT SIDE PLASTER					m2	72.508	
33	Protective and Decorative Acrylic Exterior emulsion paint of approved quality, as per manufacturer's specification and as per dircetion of EIC to be applied overf Acrylic primer as required. The rate includes cost of materials, labour, scaffolding and all incedental charges but excluding the cost of primer in ground floor (two coats)(a) normal acrylic emulsion. PWD Building Works schedule, Page -197 , Item no- 17(a)					m2	72.508	
34	(a) M.S.or W.I. Ornamental grill of approved design joints continuously welded with M.S, W.I. Flats and bars of windows, railing etc. fitted and fixed with necessary screws and lugs in ground floor. (i) Grill weighing above 10 Kg./sq.mtr and up to 16 Kg./sq. mtr. PWD Building Works schedule, P-104 Item-13 A (i) (3rd Corrigendam Page No 91) $3(0.45 \times 0.600) = 0.81 \text{ m}^2$ $= 0.81 \text{ m}^2 \times 16.00 \text{ kg} = 12.96 \text{ kg} = 0.130 \text{ qtl}$					Qntl	0.130	

SL.NO	Item Description & Item No.	NO.	LENGTH (Mtr.)	WIDTH (Mtr.)	HEIGHT (Mtr.)	Unit	Quantity
35	a) Priming one coat on steel or other metal surface with synthetic oil bound primer of approved quality including smoothening surfaces by sand papering etc. PWD Building Works schedule, P/200 Item-1(a) (0.81+4.20)=5.01 Sqm.					Sqm	5.010
36	(A) Painting with best quality synthetic enamel paint of approved make and brand including smoothening surface by sand papering etc. including using of approved putty etc. on the surface, if necessary : (b) On steel or other metal surface : (iv) Two coats (with any shade except white) PWD Building Works schedule, P-200 Item-2(b)(iv)					Sqm	5.010

SL.NO	Item Description & Item No.	NO.	LENGTH (Mtr.)	WIDTH (Mtr.)	HEIGHT (Mtr.)	Unit	Quantity	
37	Supplying profiles of required section made of Aluminium Alloy Extrusions conforming to IS: 732-1983 and IS: 1285- 1975; Anodized (with required film thickness and specified colour / natural) matt finished conforming to IS: 1868-1983 for fabrication of composite door, sliding & casement windows, partitions, formed of basic sections of any ISI embossed / certified make and brand as per direction of Engineer - In- Charge. (Payment will be made on finished length of the work). (A) In 10-12 Micron thickness Anodizing film l) Natural white h) Louvered window. i) Top, bottom and side member. PWD Building Works schedule, PWD, P-233, I- 1(h) i	3.00	0.90			M	2.700	
		3.00	1.20			M	3.600	
		TOTAL QUANTITY						6.300
38	ii) Louvered Section.					M	6.300	
39	iii) Cleat angle (Non-anodized).					M	6.300	
40	Supplying bubble free float glass of approved make and brand conforming to IS: 2835-1987.	3.00	0.45	0.00	0.60	Sq.M.	0.810	
	iv) 5mm thick coloured / tinted / smoke glass. PWD Building Works schedule, P-243, I-9							
41	Painting block letters or digits in Black Japan or any approved paint as per direction. e) Size above 7.5 cm. and upto 10 cm. PWD Building Works schedule, P-268, It-17(e)	450.00			12.00	Each	5400.000	
42	Supplying and planting of different plants / trees (supplying well grown plants bushy and healthy, minimum height as specified i.e. exposed height including all leads and lifts, carriage, handling, manuring applying pesticide and fertilizer etc. i) Furcaria Veriegated 10 to 12 leaves in height 20-30 cm in earthen pot of size 25 cm	10.00			162.00	Each	1620.000	
43	x) Ficus blakii (F. Vivicon) well branched (Bushy) of height 120cm - 135 cm in earthen pot of size 30cm. PWD Building Works schedule, Page -261, It- 9 (x)	3.00			187.00	Each	561.000	
44	xxvi) Areca Palm 4 - 5 suckers of height 90 cm to 105 cm in earthen pots of size 25 cm. PWD Building Works schedule, Page -261, It- 9 (xxvi)	3.00			127.00	Each	381.000	
	SANITARY AND PLUMBING WORKS							
45	Supplying, fitting and fixing Anglo-Indian W.C. in white glazed vitreous china ware of approved make complete in position with necessary bolts, nuts etc. a) With 'P' trap (with vent) PWD S&P Schedule, page-79, item no -3 (a)					Nos.	2.00	
46	Supplying, fitting and fixing Closet seat of approved make with lid and C.P. hinges, rubber buffer and brass screws complete .(b) Anglo Indian (i) Plastic (hallow type) White PWD S&P Schedule, page-81, item no 10.b.i					Nos.	2.00	
47	Supplying, fitting and fixing Flat back urinal (half stall urinal) in white vitreous chinaware of approved make in position with brass screws on 75 mm X 75 mm X 75 mm wooden blocks complete (ii) 470 mm X 280 mm X 340 mm PWD S&P Schedule, page 80, item no-6/(ii)					Nos.	3.00	
48	Supplying fitting and fixing squatting plate with integrated flushing in white vitreous set in cement concrete (6:3:1) with jhama chips complete. (Payment of concrete will be paid seperately) (I) 450 mm x 350 mm					Nos.	2.00	
49	Supplying, fitting and fixing 10 litre P.V.C. low-down cistern conforming to I.S. specification with P.V.C. fittings complete, C.I. brackets including two coats of painting to bracket etc. PWD S&P Schedule, Page No.-36 Item No.-2,					Nos	2.00	
50	Supplying, fitting and fixing 32 mm dia. Flush Pipe of approved make with necessary fixing materials and clamps complete. i) Polythene Flush Pipe PWD S&P Schedule, Page no 81. Item no. 11(i)					Nos	2.00	
51	Supplying, fitting and fixing urinal flush pipe fittings of approved brand. (a) C.P. urinal flush pipe fittings range of one PWD S&P Schedule, S.P.81, item-12/a					Nos	2.00	


SL.NO	Item Description & Item No.	NO.	LENGTH (Mtr.)	WIDTH (Mtr.)	HEIGHT (Mtr.)	Unit	Quantity
52	Supplying, fitting and fixing white vitreous china best quality approved make wash basin with C.I. brackets on 75 mm X 75 mm wooden blocks, C.P. waste fittings of 32 mm dia., mending good all damages and painting the brackets with two coats of approved paint. (ii) 550 mm X 400 mm size PWD S&P Schedule, P-41, It 2 (ii)					Nos	2.00
53	Supplying fitting and fixing pedestal of approved make for wash basin (White) PWD S&P Schedule, P-41, It 3					Nos.	2.00
54	Supplying,fitting and fixing approved brand P.V.C. CONNECTOR white flexible, with both ends coupling with heavy brass C.P. nut, 15 mm dia., (iii) 600 mm long PWD S&P Schedule, Page No.-43 Item No.-9-iii					Nos.	5.00
55	Supplying,fitting and fixing approved brand 32 mm dia.P.V.C. waste pipe, with PVC coupling at one end fitted with necessary clamps. (iv) 1050 mm long each PWD S&P Schedule, Page No.-43 Item No. 10-iv					Nos.	2.00
56	(f) Hand Shower(Health Faucet) with 1mtr Flexible Tube with Wall Hook(Equivalent to Code No.573 & Model -ALLIED of Jaquar or similar). PWD S&P Schedule, Page No.-3 Item No.- 3 f,					Nos.	2.00
57	(a) (i) Chromium plated Bib Cock short body (Equivalent to Code No. 511 & Model - Tropical / Sumthing Special of ESSCO or similar brand). PWD S&P Schedule, Page No.-6 Item No.-7-a-i					Nos.	5.00
58	(b) (i) Chromium plated Stop Cock (Equivalent to Code No. 513(A) & 513(B) & Model - Tropical / Sumthing Special of ESSCO or similar PWD S&P Schedule, Page No.-6 Item No.-7-b-i					Nos.	3.00
59	Chromium plated angular Stop Cock with wall flange (Equivalent to Code No. 5053 & Model - Florentine of Jaquar or similar brand). PWD S&P Schedule, Page No.-6 Item No.-7-d-i,					Nos.	3.00
60	Supplying, fitting and fixing pillar cock of approved make. a) (i) CP Pillar Cock - 15 mm. (Equivalent to Code No. 507 & Model - Tropical / Sumthing Special of ESSCO or similar brand). (P. No. - 45, Item. No. - 19(a)i, Pwd Sanitary Plumbing Schedule 2017)					Nos.	2.00
61	Supplying, fitting and fixing PVC pipes of approved make of Schedule 80 (medium duty) conforming to ASTM D - 1785 and threaded to match with GI Pipes as per IS : 1239 (Part - I). with all necessary accessories, specials viz. socket, bend, tee, union, cross, elbo, nipple, long screw, reducing socket, reducing tee, short piece etc. fitted with holder bats clamps, including cutting pipes, making threads,fitting, fixing etc. complete in all respect including cost of all necessary fittings as required, jointing materials and two coats of painting with approved paint in any position above ground. (Payment will be made on the centre line measurements of total pipe line including all specials. No separate payment will be made for accessories, specials. Payment for painting will be made seperately) (a) For Exposed Work PVC Pipes, 25 mm Page No.-12 Item No.-19-i(a), PWD,VOL-II , 2017-18					Mtr	15.00
62	(a) (a) For Exposed Work PVC Pipes, 15 mm Page No.-12 Item No.-19-i(a), PWD,VOL-II , 2017-18					Mtr	10.00
63	(b) For Concealed Work PVC Pipes, 15 mm Page No.-12 Item No.-19-i(b), PWD,VOL-II , 2017-18					Mtr	10.00
64	Supplying and fitting fixing of gunmetal wheel valve of approved brand and make tested to 21 Kg per sq. cm. 25 mm dia(E5) PWD S&P Schedule, P-5 It-5,vii)					Nos.	2.00
65	Supplying P.V.C. water storage tank of approved quality with closed top with lid (Black) - Multilayer (b) 1000 litre capacity PWD S&P Schedule, page.37,item no-6 (b)					Nos.	2.00
66	Labour for hoisting plastic water storage tank. (i) Upto 1500 litre capacity. (a) Upto 1st story from G.L. PWD S&P Schedule, page.37,item no-10 (i)(a)					Nos.	2.00
67	Labour for punching hole in plastic water storage tank upto 50 mm dia. PWD S&P Schedule, (P. No. - 38, Item. No. - 13					Nos.	4.00
68	Supply of UPVC pipes (B Type) & fittings conforming to IS-13592- 1992.(A) (i) Single Socketed 3 Meter Length, (b) 110 mm PWD S&P Schedule, Page No.-68 Item No. 23,(A)(i)(b)					Mtr	30.00
69	(B) Fittings (i) Coupler, (b) 110 mm					Nos.	8.00
70	(ii) Plain Tee, (b) 110 mm					Nos.	12.00
71	(iii) Door Tee, (b) 110 mm					Nos.	10.00
72	ix) Bend 45°, (b) 110 mm					Nos.	10.00

SL.NO	Item Description & Item No.	NO.	LENGTH (Mtr.)	WIDTH (Mtr.)	HEIGHT (Mtr.)	Unit	Quantity
73	xi) Door Bend (T.S.), (b) 110 mm					Nos.	7.00
74	xvi) Pipe Clip, (b) 110 mm					Nos.	30.00
75	xvii) W.C. Connector (150 mm long) 125 X 110(W/WC Ring) 75 mm					Nos.	4.00
76	xxxi) Plain Floor Trap with Top tile & Strainer 75 mm					Nos.	7.00
77	L) Rubber Ring, (b) 110 mm					Nos.	15.00
78	C)Rubber Lubricant 500 ML					500 ML	1.00
79	D)Solvent Cement 250 ML					250 ML	1.00
80	Labour for fitting and fixing U.P.V.C. pipes for above ground work including cost of jointing materials etc. fitting and fixing all necessary specials, cutting pipes, cutting holes in total pipeline including specials. (B) Under ground, (ii) 110 mm dia. PWD S&P Schedule, (P. - 74, Item. No. - 24 (B)					Mtr	20.00
81	Supplying, fitting & fixing UPVC pipes A- Type and fittings conforming to IS:13592-1992 with all necessary clamps nails, including making holes in walls, floor etc. cutting trenches in any soil through masonry concrete structures etc if necessary and mending good damages including joining with jointing materials (Spun Yarn, Valamoid/Bitumen/M-Seal etc) complete. A) UPVC Pipes: (i) 75 mm. Dia. (P. - 212, Item. No. - 21 (A)(i) , (B),(c),(i) & (B), (d),(i), Pwd volume- i, 2017)					Mtr	20.00
82	B) UPVC Fittings: c) Bend 87.5 degree (i) 75 mm. Dia.					Mtr	6.00
83	B) UPVC Fittings: d) Shoe (i) 75 mm. Dia.					Mtr	2.00
84	Constructing Inspection pit of inside measurement 600mm X 600mm X upto 600mm (depth) with 250 mm thick 1st. class brick work in cement mortar (1:4) on all sides, bottom of the pit consisting of 100 mm thick cement concrete (1:3:6) with stone chips over a layer of jhama brick flat soling, 15 mm thick (1:4) cement plaster to inside walls and out-side walls upto G.L. and 20 mm.thick (1:4) plaster to bottom of the pit, providing necessary invert with cement concrete (1:3:6) with stone chips as per direction, neat cement finishing to entire internal surfaces, top of the pit covered with 100 mm thick R.C.C. slab (1:1.5:3) with stone chips and necessary reinforcements upto 1% and shuttering including 6 mm thick cement plaster (1:4) in all external surfaces of the slab and one 560 mm dia. R.C.C. manhole cover of approved make supplied, fitted and fixed in the slab with necessary fittings, necessary earthwork in excavation in all sorts of soil, filling sides of the pit with earth and removing spoils after work complete in all respect with all costs of labour and materials. j) With Pakur variety (Other than SAIL/TATA/RINL). PWD S&P Schedule, S.P.87,Item No-1/(i), 7th Corrigenda Volume ii					Nos.	2.000
85	Construction of septic tank of different capacities as per approved drawing with 1st class brick work in cement mortar (1:4) including two 560 mm dia. R.C.C. manhole cover (heavy type) of approved make supplied, fitted and fixed in the 100mm thick R.C.C (1:1.5:3) top slab with necessary fittings, 20mm thick cement plaster (4 : 1) with neat cement finish to the internal surfaces and 15 mm thick cement plaster (4 : 1) to outside wall upto 200 mm below G.L floor finished with 25 mm thick grey artificial stone over 100 mm thick R.C.C(1:1.5:3) bottom slab including supplying, fitting and fixing all necessary specials, fittings, S.W. tees, C.I. foot rest etc. including excavation earth in all sorts of soil, shoring, bailing out and pumping out water as necessary, ramming, dressing the bed and refilling the sides of the tanks with earth, removing spoils, filling up the chamber with clear water, removing foreign materials from the chamber and including constructing attached inspection pit as per approved drawing and connecting all necessary pipes, joints etc. with internal plaster work and artificial stone flooring is to be done with admixture of water proofing compound @ 0.5% by weight of cement with all costs of labour and materials. (ii) For 20 users A) With Pakur variety. (JSW/JSPL/SHYAM/SRMB/ELECTROSTEEL/SSL) PWD S&P Schedule, S.P.88,Item No-3(ii)(A) 7th Corrigenda Volume ii					Nos.	1.000

SL.NO	Item Description & Item No.	NO.	LENGTH (Mtr.)	WIDTH (Mtr.)	HEIGHT (Mtr.)	Unit	Quantity
86	Construction of circular soak well 2.5 metre deep in all types of sandy soils with dry brick work upto 1.6 metre from the bottom having 150 mm intermediate cement brick work (1:4) band all round and cement brick work (1:4) upto 0.90 metre from top with 20mm thick cement plastering (1:4) to inside face upto the depth of cement brick work, 15mm thick cement plaster (1:4) on outer face from top of the well upto G.L. and 6 mm thick cement plaster (1:4) on top of the R.C.C. cover slab including filling bottom 1.00 metre of inside of the well with brick metal (50 mm to 63 mm size) including R.C.C. cover slab of 100 mm thick with cement conc (1:1.5:3) with stone chips with necessary reinforcement and shuttering including one 560 mm dia. R.C.C. manhole cover (heavy type) of approved make supplied, fitted and fixed in the cover slab with necessary fittings, making necessary arrangements for pipe connections, excavation of well including shoring, dewatering and removing the excess earth from the premises as per direction complete in all respect with all costs of labour and materials. With 250 mm thick dry brick work and 250 mm thick cement brick work (1:6) and 1.00m inside dia. (Other than SAIL/TATA/RINL) S.P.89,Item No-4 7th Corrigenda Volume ii	1.00			16621.00	Nos.	16621.000
87	Supplying, fitting and fixing towel rail with two brackets. (a) C.P. over brass (ii) 25 mm dia. and 600 mm long PWD S&P Schedule, p No 82 I No- 22 (a)(ii)					Nos.	2.00
88	Supplying, fitting and fixing bevelled edged mirror 5.5 mm thick silver red as per I.S. 3438 / 1965 together with brass C.P. hinges. (ii) 600 mm X 450 mm PWD S&P Schedule, P-81, It-15(ii)					Nos.	2.00
89	Supplying, fitting and fixing soap holder. (b) Fibre glass Sanitary and plumbing work schedule P-82, It-18(b)					Nos.	2.00
90	Supplying, fitting and fixing glass shelf with aluminium guard rails. (a) Ordinary type with 5.5 mm sheet glass (i) 450 mm X 125 mm Sanitary and plumbing work schedule P-81, It-16(a)(i)					Nos.	2.00


S.A.E
KONNAGAR MUNICIPALITY
SUB-Asst- Eng
Konnagar Municipality




CHAIRMAN
KONNAGAR MUNICIPALITY
Chairman
Konnagar Municipality

KONNAGAR MUNICIPALITY

CONSTRUCTION OF TOILET BLOCK (CT/PT) MODEL NO - F CIVIL WORKS
TOILET SEATS - 2 NOS AND URINAL - 3 NOS. AT KONNAGAR DWADAS MANDIR GHAT , WARD - 06
UNDER KONNAGAR MUNICIPALITY.

SL. NO.	Item Description & Item No.	Quantity	Rate	Unit	Amount
1	Earth work in excavation of foundation trenches or drains, in all sorts of soil (including mixed soil but excluding laterite or sandstone) including removing, spreading or stacking the spoils within a lead of 75 m. as directed. The item includes necessary trimming the sides of trenches, levelling, dressing and ramming the bottom, bailing out water as required complete. (a) Depth of excavation not exceeding 1,500 mm. PWD Building Works schedule Page - 1, Item -2.a	7.360	119.27	Cum.	877.86
2	Earth work in filling in foundation trenches or plinth with good earth, in layers not exceeding 150 mm. including watering and ramming etc. layer by layer complete. (Payment to be made on the basis of measurement of finished quantity of work). (a) With earth obtained from excavation of foundation. PWD Building Works schedule, Page - 1, Item -3.a	1.472	77.54	Cum.	114.14
3	(A) Filling in foundation or plinth by silver sand in layers not exceeding 150 mm as directed and consolidating the same by thorough saturation with water, ramming complete including the cost of supply of sand. (payment to be made on measurement of finished quantity) PWD Building Works schedule, Page - 2, Item -4.a	6.125	711.81	Cum	4360.04
4	Single Brick Flat Soling of picked jhama bricks including ramming and dressing bed to proper level and filling joints with local sand. PWD Building Works schedule, Page- 14, Item - 1 (Corri. Page-01, Date-04-06-2018)	23.455	357.00	Sqm	8373.44
5	Ordinary Cement concrete (mix 1:1.5:3) with graded stone chips (20 mm nominal size) excluding shuttering and reinforcement, if any, in ground floor as per relevant IS codes. a) Pakur Variety /Chandil Variety PWD Building Works schedule, p-26 Item 10 a (Rate Analysis)	8.240	5535.45	Cum	45610.55
6	25mm. thick damp proof course with cement concrete with stone chips (1:1.5:3) [with graded stone aggregate 10 mm nominal size] and admixture of water proofing compound as per manufacturer's specification followed by two coat of polymer based paint, (1st coat after 4 to 5 days of concrete laying and 2 nd coat just before brick masonry work) as directed (cost of water proofing compound & polymer based paint to be paid separately).(Chequering not required over concrete or painted surface). [Note: - Waterproofing as per item 9, polymer based paint as per item 8 (a) of subhead C of Section (C). PWD Building Works schedule, Page -47, Item -1 (Rate Analysis)	5.556	184.11	Sqm	1022.96
7	Brick work with 1st class bricks in cement mortar (1:4) (a) Foundation and plinth ground floor PWD Building Works schedule, Page -15, Item-7.a (Rate Analysis)	3.381	5491.59	Cum.	18565.01
8	Brick work with 1st class bricks in cement mortar (1:4) (b) superstructure ground floor PWD Building Works schedule, Page -15, Item-7.b (Rate Analysis)	9.426	5714.59	Cum.	53866.26
9	125 mm brick work with 1st class bricks in cement mortar (1:4) in ground floor. PWD Building Works schedule, Page -16, Item-16, cori page -3, date -04.06.2018 (Rate Analysis)	12.382	714.47	Sqm.	8846.30
10	Hire and labour charges for shuttering with centering and necessary staging upto 4 m using approved stout props and thick hard wood planks of approved thickness with required bracing for concrete slabs, beams and columns, lintels curved or straight including fitting, fixing and striking out after completion of works (upto roof of ground floor) (f) 25 mm to 30 mm shuttering without staging in foundation PWD Building Works schedule, Page -42, Item- 36.f	13.033	209.00	Sqm	2723.79

SL. NO.	Item Description & Item No.	Quantity	Rate	Unit	Amount
11	Hire and labour charges for shuttering with centering and necessary staging upto 4 m using approved stout props and thick hard wood planks of approved thickness with required bracing for concrete slabs, beams and columns, lintels curved or straight including fitting, fixing and striking out after completion of works (upto roof of ground floor) (a) 25 mm to 30 mm thick wooden shuttering as per decision & direction of Engineer-In-Charge. PVD Building Works schedule, Page -42, Item- 36.a	56.889	335.00 334.00	Sqm	19057.73 19000.92
12	Supplying and laying polythine sheet (150 gm/sq.m) over dampproof course or below flooring or roof terracing or foundation or foundation trenches. PVD Building Works schedule, Page -47, Item-3	80.035	24.00	Sqm.	1920.84
13	Reinforcement for reinforced concrete work in all sorts of structures including distribution bars, stirrups, binders etc initial straightening and removal of loose rust (if necessary), cutting to requisite length, hooking and bending to correct shape, placing in proper position and binding with 16 gauge black annealed wire at every intersection, complete as per drawing and direction. (a) For works in foundation and upto roof of ground floor/upto 4 m. (i) Tor steel/Mild Steel , JSPL/SWAYN/ELETRO/STEEL PVD Building Works schedule, Page - 43, Item - 40.a.i.1(Corri. 10th Page-01, Date-23-01-2020) (Rate Analysis)	0.777	54400.74	M.T.	42269.37
14	Collapsible gate with 40 mm x 10 mm x 6 mm Tee as top and bottom guide rail , 20 mm x 10 mm x 2 mm vertical channels 100 mm apart in full stretched position 20m x 5 mm MS flats as collapsible bracings properly reveted and washered including 38 mm steel roller including locking arrangements , fitted and fixed in position with lugs set in cement concrete including cutting necessary hicks chasing etc in walls , floors etc and making good all damages . PVD Building Works schedule, Page -106, Item- .18	4.200	3402.00	Sqm	14288.40
15	Labour for Chipping of concrete surface before taking up Plastering work. PVD Building Works schedule, P-192, It-1	10.114	21.00	Sqm	212.39
16	Plaster (to wall, floor, ceiling etc.) with sand and cement mortar including rounding off or chamfering corners as directed and raking out joints including throating, nosing and drip course, scaffolding/staging where necessary (Ground floor).[Excluding cost of chipping over concrete surface] (i) With 1:6 cement mortar (b) 20 mm thick plaster (Out side) PVD Building Works schedule, P-189 It- No. 1 (b) (Rate Analysis)	72.508	162.70	Sqm.	11796.97
17	Plaster (to wall, floor, ceiling etc.) with sand and cement mortar including rounding off or chamfering corners as directed and raking out joints including throating, nosing and drip course, scaffolding/staging where necessary (Ground floor).[Excluding cost of chipping over concrete surface] (i) With 1:6 cement mortar (c) 15 mm thick plaster (Inside) PVD Building Works schedule, P-189 It- No. 1 (i)(c) (Rate Analysis)	16.745	141.53	Sqm.	2369.92
18	Plaster (to wall, floor, ceiling etc.) with sand and cement mortar including rounding off or chamfering corners as directed and raking out joints including throating, nosing and drip course, scaffolding/staging where necessary (Ground floor).[Excluding cost of chipping over concrete surface] (ii) With 1:4 cement mortar (c) 10 mm thick plaster PVD Building Works schedule, P-189 It- No. 1 (ii)(c) (Rate Analysis)	10.114	126.53	Sqm	1279.69
19	Neat cement punning about 1.5 mm thick in wall ,dado, window sills, floors etc . Note cement 0.152 m3/100 m2 PVD Building Works schedule, P-192 It- No. 15	9.210	32.75	Sq.m	301.63

SL. NO.	Item Description & Item No.	Quantity	Rate	Unit	Amount
20	Supplying, fitting and fixing fibre reinforced polymer (FRP) Composite door frame as per approved section with glass fibre reinforced plastic moulded skins and a special sandwich core, so as to impart monolithic composite structure as per approved technology of Department of Science and Technology (DST) to satisfy IS: 4020 door testing performance criteria. (i) 66mm x 90mm PVD Building Works schedule, P-115, It - 3 (i)	9.300	497.00	Mtr	4622.10
21	Supplying, fitting & fixing fibre reinforced polymer (FRP) Composite door shutters as per approved design with glass fibre reinforced plastic moulded skins and a special sandwich core, so as to impart monolithic composite structure as per approved technology of Department of Science and Technology (DST) to satisfy IS:4020 door testing performance criteria. In ground floor. ii) 25 mm thick P-125, It- 14(ii)	2.925	2581.00	Sqm	7549.43
22	Anodised aluminium barrel / tower / socket bolt (full covered) of approved manufactured from extruded section conforming to I.S. 204/74 fitted and fixed with cadmium plated screws . (vii) 225mm long x 10mm dia. bolt. PVD Building Works schedule, P-144, It No. 26 (vii)	6.000	84.00	Each	504.00
23	Iron butt hinges of approved quality fitted and fixed with steel screws, with ISI mark. (viii) 100mm X 75mm X 3.50mm. PVD Building Works schedule, P-140, It No. -5 (viii)	40.000	66.00	Each	2640.00
24	Anodised aluminium decorative handle (hexagonal / fluted) of approved quality fitted and fixed complete. (i) 150mm plate x 10mm dia rod x 12mm hexagonal/fluted. PVD Building Works schedule, Page -146 . Item no-31,(i)	4.000	87.00	Each	348.00
25	Iron hasp bolt of approved quality fitted and fixed complete (oxidised) with 16mm dia rod with concrete bolt and round fitting. b) 250mm long. PVD Building Works schedule, Page -141 . Item no-10 b)	2.000	159.00	Each	318.00
26	Supplying and laying true to line and level vitrified tiles of approved brand (size not less than 600 mm X 600 mm X 10 mm thick) in floor, skirting etc. set in 20 mm sand cement mortar (1:4) and 2 mm thick cement slurry back side of tiles using cement @ 2.91Kg./sqM or using polymerised adhesive (6 mm thick layer applied directly over finished artificial stone floor/Mosaic etc without any backing course) laid after application slurry using 1.75 Kg of cement per sqM below mortar only, joints grouted with admixture of white cement and colouring Pigment to match with colour of tiles / epoxy grout materials of approved make as directed and removal of wax coating of top surface of tiles with warm water and polishing the tiles using soft and dry cloth upto mirror finish complete including the cost of materials, labour and all other incidental charges complete true to the manufacturer's specification and direction of Engineer-in-Charge. (White cement, synthetic adhesive and grout material to be supplied by the contractor) I (I) With application slurry @1.75 kg/ Sq.m, 20 mm sand cement mortar (1:4) & 2 mm thick cement slurry at back side of tiles, 0.2 kg/ Sq.m white cement for joint filling with pigment. (A) Deep Colour & White PVD Building Works schedule, Page-66 Item-36 (A) , 3rd corrigenda	10.114	1695.00	sq.m	17142.81
27	Supplying and laying chequered tiles of any shade and of approved quality with (1:1.5:3) cement concrete laied in pannels or patterns as directed in pavement ,footpath etc including necessary underlay 25 mm thick (avg)cement mortar (1:3) complete in all respect with all labour and materials. (Using cement slurry @4.4kg/sq.m at back side and @2.4 kg/sq.m for joint filling). PVD Building Works schedule, Page -74 , Item no- 46(i). 25 mm thick	2.438	471.00 470.00	Sqm.	1148.06 1145.86

SL. NO.	Item Description & Item No.	Quantity	Rate	Unit	Amount
28	Supplying, fitting & fixing 1st quality Ceramic tiles in walls and floors to match with the existing work & 4 nos. of key stones (10mm) fixed with araldite at the back of each tile & finishing the joints with white cement mixed with colouring oxide if required to match the colour of tiles including roughening of concrete surface, if necessary or by synthetic adhesive & grout materials etc. B) Wall Area of each tile above 0.09 Sq.m ii) Other than Coloured decorative including white PWD Building Works schedule, page-64, Item:35.(B.) (b).(ii) (3rd Corrigendum, Page 36)	50.835	1041.00	sq.m	52919.24
29	Applying interior grade Acrylic Primer of approved quality and brand on plastered and concrete surface old or new surface to receive Distemper Acrylic emulsion paint including scraping and preparing the surface thoroughly, complete as per manufacturer's specification and as per direction of the E-I-C (Ground Floor) (b) Two Coats PWD Building Works schedule, Page -196, Item no- 7(b)(i).	26.859	44.20	m2	1187.16
30	Dry Destempering interior walls or ceiling including cleaning, washing, smoothening surface (b) two coats PWD Building Works schedule, Page -196, Item no- 9(b).	26.859	49.00	m2	1316.08
31	Rendering the Surface of walls and ceiling with White Cement base WATER PROOF wall putty of approved make & brand.(1.5 mm thick) In Ground Floor PWD Building Works schedule, PWD, P- 198, I - 5	26.859	122.00	m2	3276.77
32	Applying exterior grade Acrylic Primer of approved quality and brand on plastered or concrete surface old or new surface to receive Decorative Textured (Marble Finish) or Smooth Finish Acrylic exterior emulsion paint including scraping and preparing the surface thoroughly, complete as per manufacturer's specification and as per direction of the EIC in Ground Floor (b) two coats. PWD Building Works schedule, Page -196, Item no- 8(b)	72.508	45.10	m2	3270.09
33	Protective and Decorative Acrylic Exterior emulsion paint of approved quality, as per manufacturer's specification and as per direction of EIC to be applied over Acrylic primer as required. The rate includes cost of materials, labour, scaffolding and all incidental charges but excluding the cost of primer in ground floor (two coats)(a) normal acrylic emulsion. PWD Building Works schedule, Page -197, Item no- 17(a)	72.508	67.00	m2	4858.00
34	(a) M.S.or W.I. Ornamental grill of approved design joints continuously welded with M.S, W.I. Flats and bars of windows, railing etc. fitted and fixed with necessary screws and lugs in ground floor.. (i) Grill weighing above 10 Kg./sq.mtr and up to 16 Kg./sq. mtr. PWD Building Works schedule, P-104 Item-13 A (i) (3rd Corrigendum Page No 91)	0.130	9888.00	Qntl	1285.44
35	a) Priming one coat on steel or other metal surface with synthetic oil bound primer of approved quality including smoothening surfaces by sand papering etc. PWD Building Works schedule, P/200 Item-1(a)	5.010	29.00	Sqm	145.29
36	(A) Painting with best quality synthetic enamel paint of approved make and brand including smoothening surface by sand papering etc. including using of approved putty etc. on the surface, if necessary : (b) On steel or other metal surface : (iv) Two coats (with any shade except white) PWD Building Works schedule, P-200 Item-2(b)(iv)	5.010	79.00	Sqm	395.79

SL. NO.	Item Description & Item No.	Quantity	Rate	Unit	Amount
37	Supplying profiles of required section made of Aluminium Alloy Extrusions conforming to IS: 732-1983 and IS: 1285- 1975; Anodized (with required film thickness and specified colour / natural) matt finished conforming to IS: 1868-1983 for fabrication of composite door, sliding & casement windows, partitions, formed of basic sections of any ISI embossed / certified make and brand as per direction of Engineer - In- Charge. (Payment will be made on finished length of the work). (A) In 10-12 Micron thickness Anodizing film l) Natural white h) Louvered window. i) Top, bottom and side member. PWD Building Works schedule, PWD, P-233, I- 1(h) i	6.300	183.00	M	1152.90
38	ii) Louvered Section.	6.300	658.00	M	4145.40
39	iii) Cleat angle (Non-anodized).	6.300	263.00	M	1656.90
40	Supplying bubble free float glass of approved make and brand conforming to IS: 2835-1987. iv) 5mm thick coloured / tinted / smoke glass. PWD Building Works schedule, P-243, I-9	0.810	585.00	Sq.M.	473.85
41	Painting block letters or digits in Black Japan or any approved paint as per direction. e) Size above 7.5 cm. and upto 10 cm. PWD Building Works schedule, P-268, It-17(e)	450.000	12.00	Each	5400.00
42	Supplying and planting of different plants / trees (supplying well grown plants bushy and healthy, minimum height as specified i.e. exposed height including all leads and lifts, carriage, handling, manuring applying pesticide and fertilizer etc. i) Furcaria Veriegated 10 to 12 leaves in height 20-30 cm in earthen pot of size 25 cm	10.000	162.00	Each	1620.00
43	x) Ficus blakii (F. Vivicon) well branched (Bushy) of height 120cm - 135 cm in earthen pot of size 30cm.	3.000	187.00	Each	561.00
44	xxvi) Areca Palm 4 - 5 suckers of height 90 cm to 105 cm in earthen pots of size 25 cm. PWD Building Works schedule, Page -261, It- 9 (xxvi)	3.000	127.00	Each	381.00

SL. NO.	Item Description & Item No.	Quantity	Rate	Unit	Amount
SANITARY AND PLUMBING WORKS					
45	Supplying, fitting and fixing Anglo-Indian W.C. in white glazed vitreous china ware of approved make complete in position with necessary bolts, nuts etc. a) With 'P' trap (with vent) PWD S&P Schedule, page-79, item no -3 (a)	5.000	3104.00	Each	15520.00
46	Supplying, fitting and fixing Closet seat of approved make with lid and C.P. hinges, rubber buffer and brass screws complete .(b) Anglo Indian (i) Plastic (hallow type) White PWD S&P Schedule, page-81,item no 10.b.i	2.000	380.00 485.00	Each	760.00 970.00
47	Supplying, fitting and fixing Flat back urinal (half stall urinal) in white vitreous chinaware of approved make in position with brass screws on 75 mm X 75 mm X 75 mm wooden blocks complete (ii) 470 mm X 280 mm X 340 mm PWD S&P Schedule, page.80,item no-6/(ii)	3.000	945.00	Each	2835.00
48	Supplying fitting and fixing squatting plate with integrated flushing in white vitreous set in cement concrete (6:3:1) with jhama chips complete. (Payment of concrete will be paid seperately) (1) 450 mm x 350 mm	2.000	881.00	each	1762.00
49	Supplying, fitting and fixing 10 litre P.V.C. low-down cistern conforming to I.S. specification with P.V.C. fittings complete, C.I. brackets including two coats of painting to bracket etc. PWD S&P Schedule, Page No.-36 Item No.-2,	2.000	1015.00	Nos	2030.00
50	Supplying, fitting and fixing 32 mm dia. Flush Pipe of approved make with necessary fixing materials and clamps complete. i) Polythene Flush Pipe PWD S&P Schedule, Page no 81. Item no. 11(i)	2.000	155.00	Each	310.00
51	Supplying, fitting and fixing urinal flush pipe fittings of approved brand. (a) C.P. urinal flush pipe fittings range of one PWD S&P Schedule, S.P.81,item-12/a	2.000	414.00	Each	828.00
52	Supplying, fitting and fixing white vitreous china best quality approved make wash basin with C.I. brackets on 75 mm X 75 mm wooden blocks, C.P. waste fittings of 32 mm dia., mending good all damages and painting the brackets with two coats of approved paint. (ii) 550 mm X 400 mm size PWD S&P Schedule, P-41, It 2 (ii)	2.000	2208.00	Each	4416.00
53	Supplying fitting and fixing pedestal of approved make for wash basin (White) PWD S&P Schedule, P-41, It 3	2.000	1497.00	Each	2994.00
54	Supplying, fitting and fixing approved brand P.V.C. CONNECTOR white flexible, with both ends coupling with heavy brass C.P. nut, 15 mm dia., (iii) 600 mm long PWD S&P Schedule, Page No.-43 Item No.-9-iii PWD,	5.000	107.00	Each	535.00
55	Supplying, fitting and fixing approved brand 32 mm dia. P.V.C. waste pipe, with PVC coupling at one end fitted with necessary clamps. (iv) 1050 mm long each PWD S&P Schedule, Page No.-43 Item No. 10-iv	2.000	91.00	Each	182.00
56	(f) Hand Shower(Health Faucet) with 1mtr Flexible Tube with Wall Hook(Equivalent to Code No.573 & Model -ALLIED of Jaquar or similar). PWD S&P Schedule, Page No.-3 Item No.- 3 f,	2.000	1251.00	Each	2502.00
57	(a) (i) Chromium plated Bib Cock short body (Equivalent to Code No. 511 & Model - Tropical / Sumthing Special of ESSCO or similar brand). PWD S&P Schedule, Page No.-6 Item No.-7-a-i	5.000	539.00	Each	2695.00
58	(b) (i) Chromium plated Stop Cock (Equivalent to Code No. 513(A) & 513(B) & Model - Tropical / Sumthing Special of ESSCO or similar PWD S&P Schedule, Page No.-6 Item No.-7-b-i	3.000	493.00	Each	1479.00
59	Chromium plated angular Stop Cock with wall flange (Equivalent to Code No. 5053 & Model - Florentine of Jaquar or similar brand). PWD S&P Schedule, Page No.-6 Item No.-7-d-i,	3.000	815.00	Each	2445.00
60	Supplying, fitting and fixing pillar cock of approved make. a) (i) CP Pillar Cock - 15 mm. (Equivalent to Code No. 507 & Model - Tropical / Sumthing Special of ESSCO or similar brand). (P. No. - 45, Item. No. - 19(a)i, Pwd Sanitary Plumbing Schedule 2017)	2.000	555.00	Each	1110.00

SL. NO.	Item Description & Item No.	Quantity	Rate	Unit	Amount
61	Supplying, fitting and fixing PVC pipes of approved make of Schedule 80 (medium duty) conforming to ASTM D - 1785 and threaded to match with GI Pipes as per IS : 1239 (Part - I). with all necessary accessories, specials viz. socket, bend, tee, union, cross, elbo, nipple, long screw, reducing socket, reducing tee, short piece etc. fitted with holder bats clamps, including cutting pipes, making threads, fitting, fixing etc. complete in all respect including cost of all necessary fittings as required, jointing materials and two coats of painting with approved paint in any position above ground. (Payment will be made on the centre line measurements of total pipe line including all specials. No separate payment will be made for accessories, specials. Payment for painting will be made separately) (a) For Exposed Work PVC Pipes, 25 mm Page No.-12 Item No.-19-i(a), PWD, VOL-II, 2017-18	15.000	177.00	Mtr	2655.00
62	(a) (a) For Exposed Work PVC Pipes, 15 mm Page No.-12 Item No.-19-i(a), PWD, VOL-II, 2017-18	10.000	101.00	Mtr	1010.00
63	(b) For Concealed Work PVC Pipes, 15 mm Page No.-12 Item No.-19-i(b), PWD, VOL-II, 2017-18	10.000	137.00	Mtr	1370.00
64	Supplying and fitting fixing of gunmetal wheel valve of approved brand and make tested to 21 Kg per sq. cm. 25 mm dia (E5) PWD S&P Schedule, P-5 It-5,vii,	2.000	778.00	Each	1556.00
65	Supplying P.V.C. water storage tank of approved quality with closed top with lid (Black) - Multilayer (b) 1000 litre capacity PWD S&P Schedule, page.37,item no-6 (b)	2.000	5128.00	Each	10256.00
66	Labour for hoisting plastic water storage tank. (i) Upto 1500 litre capacity. (a) Upto 1st story from G.L. PWD S&P Schedule, page.37,item no-10 (i)(a)	2.000	96.00	Each	192.00
67	Labour for punching hole in plastic water storage tank upto 50 mm dia. PWD S&P Schedule, (P. No. - 38, Item. No. - 13	4.000	19.00	Each	76.00
68	Supply of UPVC pipes (B Type) & fittings conforming to IS-13592- 1992.(A) (i) Single Socketed 3 Meter Length, (b) 110 mm PWD S&P Schedule, Page No.-68 Item No. 23,(A)(i)(b)	30.000	292.00	Mtr	8760.00
69	(B) Fittings (i) Coupler, (b) 110 mm	8.000	85.00	Each	680.00
70	(ii) Plain Tee, (b) 110 mm	12.000	85.00	Each	1020.00
71	(iii) Door Tee, (b) 110 mm	10.000	195.00	Each	1950.00
72	ix) Bend 45°, (b) 110 mm	10.000	89.00	Each	890.00
73	xi) Door Bend (T.S.), (b) 110 mm	7.000	147.00	Each	1029.00
74	xvi) Pipe Clip, (b) 110 mm	30.000	21.00	Each	630.00
75	xvii) W.C. Connector (150 mm long) 125 X 110(W/WC Ring) 75 mm	4.000	142.00	Each	568.00
76	xxxi) Plain Floor Trap with Top tile & Strainer 75 mm	7.000	144.00	Each	1008.00
77	L) Rubber Ring, (b) 110 mm	15.000	17.00	Each	255.00
78	C) Rubber Lubricant 500 ML	1.000	187.00	500 ML	187.00
79	D) Solvent Cement 250 ML	1.000	103.00	250 ML	103.00
80	Labour for fitting and fixing U.P.V.C. pipes for above ground work including cost of jointing materials etc. fitting and fixing all necessary specials, cutting pipes, cutting holes in total pipeline including specials. (B) Under ground, (ii) 110 mm dia. PWD S&P Schedule, (P. - 74, Item. No. - 24 (B)	20.000	84.00	Mtr	1680.00
81	Supplying, fitting & fixing UPVC pipes A- Type and fittings conforming to IS:13592-1992 with all necessary clamps nails, including making holes in walls, floor etc. cutting trenches in any soil through masonry concrete structures etc if necessary and mending good damages including joining with jointing materials (Spun Yarn, Valamoid/Bitumen/M-Seal etc) complete. A) UPVC Pipes: (i) 75 mm. Dia. (P. - 212, Item. No. - 21 (A)(i), (B),(c),(i) & (B), (d),(i), Pwv volume- i, 2017)	20.000	188.00	Mtr	3760.00
82	B) UPVC Fittings: c) Bend 87.5 degree (i) 75 mm. Dia.	6.000	84.00	Mtr	504.00
83	B) UPVC Fittings: d) Shoe (i) 75 mm. Dia.	2.000	78.00	Mtr	156.00

95.00

570.00

SL. NO.	Item Description & Item No.	Quantity	Rate	Unit	Amount
84	Constructing Inspection pit of inside measurement 600mm X 600mm X upto 600mm (depth) with 250 mm thick 1st. class brick work in cement mortar (1:4) on all sides, bottom of the pit consisting of 100 mm thick cement concrete (1:3:6) with stone chips over a layer of jhama brick flat soling, 15 mm thick (1:4) cement plaster to inside walls and outside walls upto G.L. and 20 mm. thick (1:4) plaster to bottom of the pit, providing necessary invert with cement concrete (1:3:6) with stone chips as per direction, neat cement finishing to entire internal surfaces, top of the pit covered with 100 mm thick R.C.C. slab (1:1.5:3) with stone chips and necessary reinforcements upto 1% and shuttering including 6 mm thick cement plaster (1:4) in all external surfaces of the slab and one 560 mm dia. R.C.C. manhole cover of approved make supplied, fitted and fixed in the slab with necessary fittings, necessary earthwork in excavation in all sorts of soil, filling sides of the pit with earth and removing spoils after work complete in all respect with all costs of labour and materials. i) With Pakur variety (Other than SAIL/TATA/RINL). PWD S&P Schedule, S.P.87, Item No-1(i), 7th Corrigenda Volume ii	2.000	7248.00 7027.00	Each	14496.00 14054.00
85	Construction of septic tank of different capacities as per approved drawing with 1st class brick work in cement mortar (1:4) including two 560 mm dia. R.C.C. manhole cover (heavy type) of approved make supplied, fitted and fixed in the 100mm thick R.C.C (1:1.5:3) top slab with necessary fittings, 20mm thick cement plaster (4 : 1) with neat cement finish to the internal surfaces and 15 mm thick cement plaster (4 : 1) to outside wall upto 200 mm below G.L. floor finished with 25 mm thick grey artificial stone over 100 mm thick R.C.C(1:1.5:3) bottom slab including supplying, fitting and fixing all necessary specials, fittings, S.W. tees, C.I. foot rest etc. including excavation earth in all sorts of soil, shoring, bailing out and pumping out water as necessary, ramming, dressing the bed and refilling the sides of the tanks with earth, removing spoils, filling up the chamber with clear water, removing foreign materials from the chamber and including constructing attached inspection pit as per approved drawing and connecting all necessary pipes, joints etc. with internal plaster work and artificial stone flooring is to be done with admixture of water proofing compound @ 0.5% by weight of cement with all costs of labour and materials. (ii) For 20 users A) With Pakur variety. (JSW/JSPL/SHYAM/SRMB/ELECTROSTEEL/SSL) PWD S&P Schedule, S.P.88, Item No-3(ii)(A) 7th Corrigenda Volume ii	1.000	48162.00 47178.00	Each	48162.00 47178.00
86	Construction of circular soak well 2.5 metre deep in all types of sandy soils with dry brick work upto 1.6 metre from the bottom having 150 mm intermediate cement brick work (1:4) band all round and cement brick work (1:4) upto 0.90 metre from top with 20mm thick cement plastering (1:4) to inside face upto the depth of cement brick work, 15mm thick cement plaster (1:4) on outer face from top of the well upto G.L. and 6 mm thick cement plaster (1:4) on top of the R.C.C. cover slab including filling bottom 1.00 metre of inside of the well with brick metal (50 mm to 63 mm size) including R.C.C. cover slab of 100 mm thick with cement conc (1:1.5:3) with stone chips with necessary reinforcement and shuttering including one 560 mm dia. R.C.C. manhole cover (heavy type) of approved make supplied, fitted and fixed in the cover slab with necessary fittings, making necessary arrangements for pipe connections, excavation of well including shoring, dewatering and removing the excess earth from the premises as per direction complete in all respect with all costs of labour and materials. With 250 mm thick dry brick work and 250 mm thick cement brick work (1:6) and 1.00m inside dia. (Other than SAIL/TATA/RINL) S.P.89, Item No-4 7th Corrigenda Volume ii	1.000	16621.00 16375.00	Each	16621.00 16375.00
87	Supplying, fitting and fixing towel rail with two brackets. (a) C.P. over brass (ii) 25 mm dia. and 600 mm long No 82 I No- 22 (a)(ii) PWD S&P Schedule, p	2.000	430.00	Each	860.00
88	Supplying, fitting and fixing bevelled edged mirror 5.5 mm thick silver red as per I.S. 3438 / 1965 together with brass C.P. hinges. (ii) 600 mm X 450 mm PWD S&P Schedule, P-81, It-15(ii)	2.000	484.00	Each	968.00
89	Supplying, fitting and fixing soap holder. (b) Fibre glass Sanitary and plumbing work schedule P-82, It-18(b)	2.000	58.00	Each	406.00

SL. NO.	Item Description & Item No.	Quantity	Rate	Unit	Amount
90	Supplying, fitting and fixing glass shelf with aluminium guard rails. (a) Ordinary type with 5.5 mm sheet glass (i) 450 mm X 125 mm Sanitary and plumbing work schedule P-81, It-16(a)(i)	2.000	341.00	Each	682.00
	Total 519612.59				521067.59
	Add C.G.S.T @ 9% = 46765.13		Add S.G.S.T. @ 9%		46896.08
	Add S.G.S.T @ 9% = 46765.13		Add C.G.S.T. @ 9%		46896.08
	Total = 613142.85		Cost Of Civil Work		614859.76
	Add CESS @ 1% = 6131.42		Add Labour Welfare Cess. @ 1%		6148.60
	Total = 619274.30		Total Amount Including L.abour Welfare Cess.		621008.35
	Add Contingency @ 3% = 18578.22		Add Contingency @ 3%		18630.25
	Total = 637852.52		Total Amount Including L.W.C. and contingency		639638.60
	Say Rs. ≈ 637853.00		Say Rs.		639639.00

(Rs. Six Lakh Thirty seven thousand Eight hundred & fifty three only)

[Signature]

S.A.E.
KONNAGAR MUNICIPALITY

**SUB-Asst- Eng
Konnagar Municipality**

[Signature]

CHAIRMAN
KONNAGAR MUNICIPALITY

**Chairman
Konnagar Municipality**

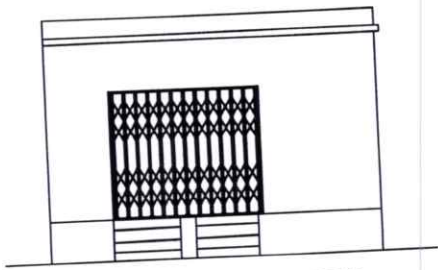
[Signature]
20/01/25

**S.A.E.
UTTARPARA KOTUNG
MUNICIPALITY**

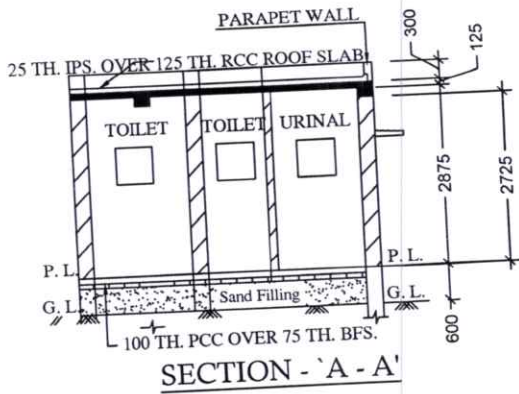
VETTED

[Signature]
20.01.2025
**SUPERINTENDING ENGINEER
(GAP-WING)
W&S SECTOR, KMDA**

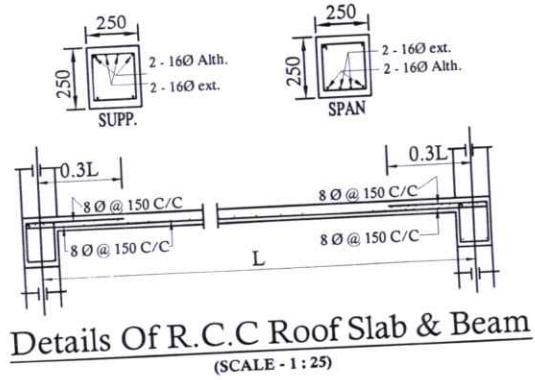
MODLE DRAWING FOR CONSTRUCTION OF C. T./P.T.
 TOILET SEATS 2 NOS URINAL 3 NOS AT KONNAGAR
 DWADAS MANDIR GHAT , WARD - 06,
 UNDER KONNAGAR MUNICIPALITY
 MODLE NO.- F



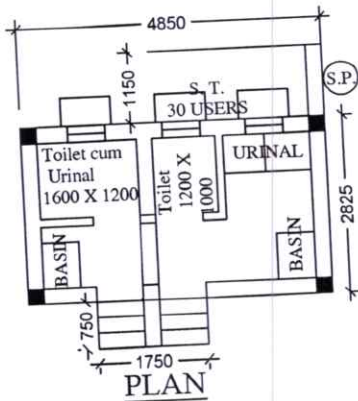
FRONT ELEVATION



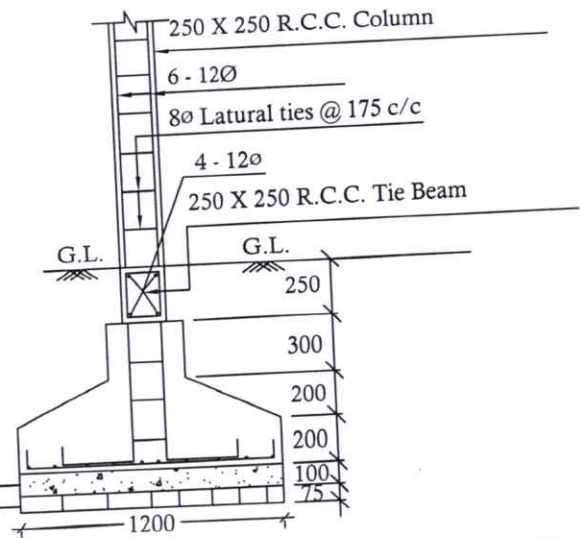
SECTION - 'A - A'



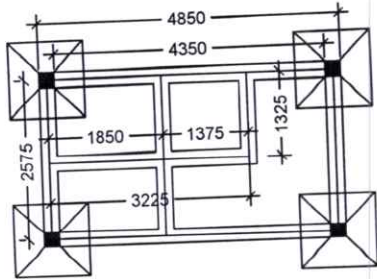
Details Of R.C.C Roof Slab & Beam
 (SCALE - 1 : 25)



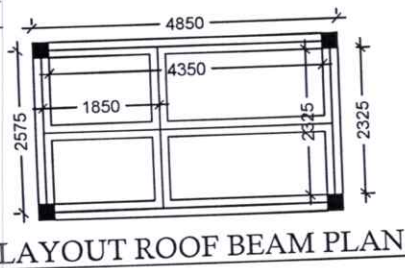
PLAN



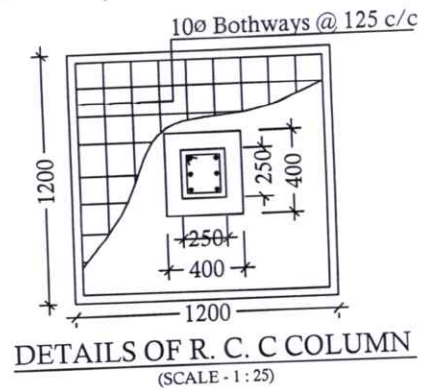
1:1.5:3 CONCRETE
 B.F.S.



COLUMN LAYOUT PLAN



LAYOUT ROOF BEAM PLAN

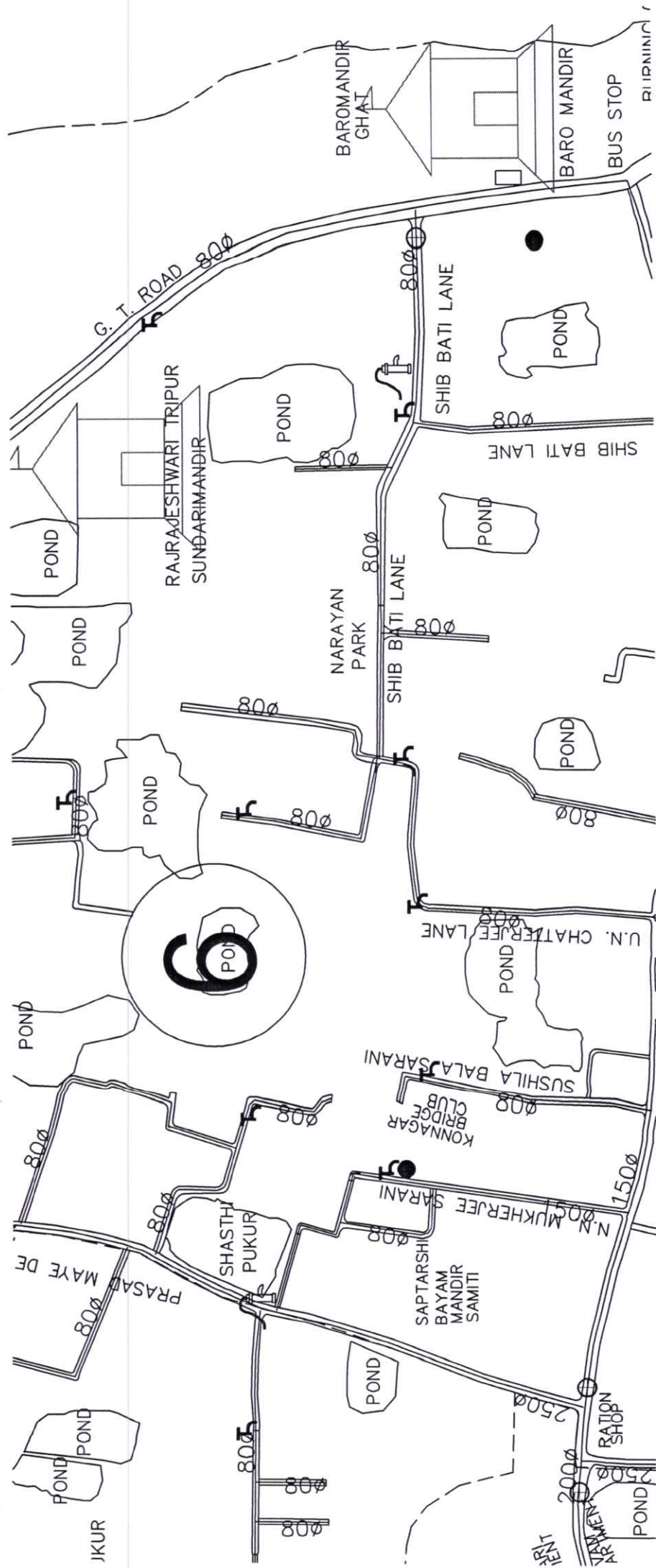


DETAILS OF R. C. C COLUMN
 (SCALE - 1 : 25)

[Signature]
 SUB-Asst- Eng
 Konnagar Municipality
 S.A.E KONNAGAR MUNICIPALITY

[Signature]
 Tufan Nandy

[Signature]
 Chairman
 Konnagar Municipality
 CHAIRMAN KONNAGAR MUNICIPALITY



Amal

SUB-Asst- Eng
Konnagar Municipality

Tufan Nandy

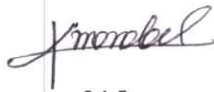
Chairman
Konnagar Municipality

[Handwritten Signature]
Chairman
Konnagar Municipality

KONNAGAR MUNICIPALITY

NON SCHEDULE ITEM OF TOILET BLOCK (CT/PT) MODEL NO - F,
TOILET SEATS - 2 NOS AND URINAL - 3 NOS. AT KONNAGAR DWADAS MANDIR GHAT ,AT WARD-06
UNDER KONNAGAR MUNICIPALITY.

SL.NO	Item Description & Item No.	NO.	LENGTH (Mtr.)	WIDTH (Mtr.)	HEIGHT (Mtr.)	Unit	Quantity
1	Standerd plastic dustbin (12 Lits.)	2.00	0.000	0.000	0.000	Each	2.0
2	Installation of sinage	5.00	0.000	0.000	0.000	Each	5.0
3	Air freshner (pack of 4 nos.)	2.00	0.000	0.000	0.000	Each	2.0
4	Air freshner (Nepthaline 250.00 gm.)	2.00	0.000	0.000	0.000	Each	2.0
5	Supplying paper napkin	2.00	0.000	0.000	0.000	Each	2.0
6	Supplying sanitary napkin (Whisper or similar make 50 Pcs.)	1.00	0.000	0.000	0.000	Each	1.0
7	Harpic (Blue 500.00 ML.)	1.00	0.000	0.000	0.000	Each	1.0
8	Harpic (Red 500 ML.)	1.00	0.000	0.000	0.000	Each	1.0
9	Gala Double lip floor wiper	1.00	0.000	0.000	0.000	Each	1.0
10	Colin glass or surface cleaner	1.00	0.00	0.00	0.000	Ltr.	1.0
11	Muriatic Acid	1.00	0.00	0.00	0.000	Ltr.	1.0
12	Bleaching Powder	1.00	0.00	0.00	0.000	Kg.	1.0
13	Dettol,Lifebuy or similar make liquid soap	1.00	0.00	0.00	0.000	Ltr.	1.0
14	Rubber hand gloves.	1.00	0.00	0.00	0.000	Pair	1.0
15	Double side plastic brush	1.00	0.00	0.00	0.000	Each	1.0
16	Plastic Broom	1.00	0.00	0.00	0.000	Each	1.0
17	Signage ACP base & reflective vinyl (E8)	5.00	0.00	0.00	0.000	Each	5.0
18	SMS/any other ICT based feedback system (with number displayed on which SMS ha to be sent) (A9)	1.00	0.00	0.00	0.000	Each	1.0
19	Glow sign bpard name & contact details of the following are displayed prominently - toilet identification number, name ULB under whose jurisdiction toilet is covered, ward number & maintenance authority prominently displayed for each toilet block supervisor, supervisor's agency & area sanitary insepctor (D3)	1.00	0.00	0.00	0.000	Each	1.0
20	Mini tulu pump	1.00	0.00	0.00	0.000	Each	1.0
21	Supplying & fixing sinage with fixing stand post for public toilet for visible to passersby	1.00	0.00	0.00	0.000	Each	1.0
22	Supplying roaster/Register for keeping account of regular cleaning (D1)	1.00	0.00	0.00	0.000	Each	1.0
23	Lettering on toilet wall for display of name and contace details of ULB ward number & name of maintanance authority, Sanitary inspector, Etc (D3)	1.00	0.00	0.00	0.000	Each	1.0



S.A.E
KONNAGAR MUNICIPALITY



CHAIRMAN
KONNAGAR MUNICIPALITY

KONNAGAR MUNICIPALITY

NON SCHEDULE ITEM OF TOILET BLOCK (CT/PT) MODEL NO - F,
TOILET SEATS - 2 NOS AND URINAL - 3 NOS. AT KONNAGAR DWADAS MANDIR GHAT, AT WARD-06
UNDER KONNAGAR MUNICIPALITY.

SL. NO.	Item Description & Item No.	Quantity	Rate	Unit	Ammount
1	Standerd plastic dustbin (12 Lits.)				
2	Installation of sinage	2.000	350.00	Each	700.00
3	Air freshner (pack of 4 nos.)	5.000	2071.00	Each	10355.00
4	Air freshner (Nephthaline 250.00 gm.)	5.000	216.00	Each	1080.00
5	Supplying paper napkin	2.000	210.00	Each	420.00
6	Supplying sanitary napkin (Whisper or similar make 50 Pcs.)	2.000	50.00	Each	100.00
7	Harpic (Blue 500.00 ML.)	1.000	520.00	Each	520.00
8	Harpic (Red 500 ML.)	1.000	300.00	Each	300.00
9	Gala Double lip floor wiper	1.000	150.00	Each	150.00
10	Colin glass or surface cleaner	1.000	350.00	Each	350.00
11	Muriatic Acid	1.000	200.00	Lit.	200.00
12	Bleaching Powder	1.000	145.00	Lit.	145.00
13	Dettol,Lifebuy or similar make liquid soap	1.000	120.00	Kg.	120.00
14	Rubber hand gloves.	1.000	140.00	Lit.	140.00
15	Double side plastic brush	1.000	80.00	Pair	80.00
16	Plastic Broom	1.000	125.00	Each	125.00
17	Signage ACP base & reflective vinyl (E8)	1.000	170.00	Each	170.00
18	SMS/any other ICT based feedback system (with number displayed on which SMS ha to be sent) (A9)	5.000	3776.00	Each	18880.00
		1.000	5000.00	Each	5000.00
19	Glow sign bpard name & contact details of the following are displayed prominently - toilet identification number, name ULB under whose jurisdiction toilet is covered, ward number & maintenance authority prominently displayed for each toilet block supervisor, supervisor's agency & area sanitary inspector (D3)	1.000	5000.00	Each	5000.00
20	Mini tulu pump				
21	Supplying & fixing sinage with fixing stand post for public toilet for visible to passersby	1.000	4000.00	Each	4000.00
22	Supplying roaster/ Register for keeping account of regular cleaning (D1)	1.000	1000.00	Each	1000.00
23	Lettering on toilet wall for display of name and contace details of ULB ward number & name of maintanance authority, Sanitary inspector, Etc (D3)	1.000	200.00	Each	200.00
		1.000	1000.00	Each	1000.00
TOTAL					50035.00

[Signature]

S.A.E
KONNAGAR MUNICIPALITY

[Signature]

CHAIRMAN
KONNAGAR MUNICIPALITY

Vetted on the basis of approved rates vide memo no. - SUDA-924/2021/7746 dt - 05/03/2022 of Addl. Secretary UD & MA Deptt. & Addl. Director SUDA.

[Signature]
20/01/22

S.A.E.
UTTARPARA KOTUNG
MUNICIPALITY

VETTED
[Signature]
20/01/2022
SUPERINTENDING ENGINEER
(GAP-WING)
W&S SECTOR, KMDA

KONNAGAR MUNICIPALITY

Subject:- ESTIMATE FOR ELECTRICAL WORK OF PUBLIC/COMMUNITY TOILET, TOILET 2 NOS URINAL 3 NOS AT DWADAS MANDIR GHAT WARD NO. - 06 UNDER KONNAGAR MUNICIPALITY OF WEST BENGAL [ASPIRATIONAL PARAMETER] KONNAGAR, HOOGHLY. (MODEL : F)

Sl.No	Description of work	Quantity	Unit	Rate	Amount	Remarks
1	Distribution wiring in 2 x 22/0.3 (1.5 sqmm) single core stranded 'FR' PVC insulated & unsheathed copper wire (Brand approved by EIC) in 20mm size PVC rigid conduit 'FR' (Precision make), with 1x22/0.3 (1.5 sqmm) single core stranded 'FR' PVC insulated & unsheathed copper wire for ECC, to light/fan/call bell points with Piano Key type switch fixed on MS CRC sheet metal (16 SWG) switch board cum JB on wall complete with 2 no. suitable size "Ph & N" copper bar incl. bakelite/Perspex (wall matching color) top cover 3 mm thick and incl. 175mm x 100mm x 65mm inspection box, making earthing attachment, painting the MS box and mending good the damages to original finish. Average run 5 mtr. PWD Schedule Page No-E-14 Iteam No-2a	4 11	Nos	612.00	2448.00 6732.00	
2	Distribution wiring in 1.1 KV grade 22/0.3 (1.5 sqmm) single core stranded 'FR' PVC insulated & unsheathed copper wire (Brand approved by EIC) in 20mm size PVC rigid conduit 'FR' (Precision make), with 1.1 KV grade 1 x 22/0.3 (1.5 sqmm) single core stranded 'FR' PVC insulated & unsheathed copper wire as ECC, to 5A 3 pin flush type plug socket & Piano Key type switch fixed on MS CRC sheet metal (16 SWG) switch board cum JB on wall incl. bakelite/ Perspex (wall matching color) top cover 3 mm thick and incl. painting the MS box and mending good the damages to original finish On Board (only for pay counter) PWD Schedule Page No-E-15; I-4a	2 1	Nos	67.00	134.00 67.00	
3	Supplying and fixing 240V 32A Double Pole AC Type 30mA RCCB. (Complete Set) (ISI marked) [Make- Legrand] (Cat No 4113/95) Legrand Page No-92	1	No	5942.00	5942.00	
4	Distribution wiring in 1.1 KV single core stranded 'FR' PVC insulated & unsheathed copper wire (Brand approved by EIC) in 20mm size PVC rigid conduit 'FR' (Precision make) incl. necy. fittings as required 2 x 36/0.3 (2.5 sqmm) + 1 x 22/0.3 (1.5 sqmm) ECC PWD Schedule Page No-E-14 Iteam No-1a(ii)	110 10	Mtr.	119.00	13090.00 1190.00	
5	Supplying and fixing double-door SPN MCB Distribution Board with IP-42/43 protection, concealed in wall after cutting the wall & mending good the damages to original finish incl. Inter connection with suitable size of copper wire and neutral link & provision for earthing attachment. a) For (2+4 way) (Make -Havells) (upto 6 seats) PWD Schedule Page No-D-9; Iteam No-13	1	No	935.00	935.00	
6	Supplying and fixing 240/415 V MCB of Breaking capacity 10kA & C characteristics on din rail of existing DBs and necessary connection 6-32A SP MCB (Make -Havells) PWD Schedule Page No-D-6; Iteam No-7	2 4	Nos	168.00	336.00 672.00	
TOTAL C/F Rs.					22885.00	

Sl.No	Description of work	Quantity	Unit	Rate	Amount	Remarks
TOTAL B/F Rs.					22885.00	
7	Supplying and fixing 240/415 V MCB Isolator on din rail of existing DBs and necessary connection. 32A DP MCB Isolator (Make -Havells) PWD Schedule Page No-D-5;Item No-6	1	No	208.00	208.00	
8	Supply of TMC501 conventional industrial batten (Philips make) LED Tube,model no- TMC501 P1xT-LED 22W P3241 WBI & WD schedule P-113, I- 5:3 F.22	2 3	Nos	451.00	902.00 1353.00	
9	Fixing only single/twin fluroscnt light fitting complete with all accessories directly on wall/ceiling by screws etc. PWD Schedule Page No-C-2;Item No-14a	2 3	Nos	86.00	172.00 258.00	
10	Supply & fixing Bulk head light fittings with die cast aluminium housing frosted/clear glass on wall/ceiling incl S/F 9 watt LED Lamp complete set. [Make - Havells] PWD sch - Page-D-13, I-23	2 3	Nos	644.00	1288.00 1932.00	
11	Supply & fixing smart bright street light complete with all accessories to be fixed from the wall of building or on pole incl. making holes /providing clamping arrangement & necy. GI reducer as required.S&F 40 mm GI Pipe 1.5 mtr average length & s&f necy length of 1.5 sqmm pvc insulated single core copper wire & making connections as required & mending good damages incl wall paingting. (30 Watt) (Make - Bajaj) WB I&WD sch P-111, I-f.9.0.2	1	No	3016.00	3016.00	
12	Supply of 12" domestic metal exhaust fan 9" (225mm) SWEEP. TRANS AIR - (for 4 seats) or 230V 50 Hz (Model- Trans Air 12" Grey)(above 4 seats) (Make-Crompton/Havells /Bajaj) UD & MA schedule P-14, I-5	2 3	Nos	1863.00	3726.00 5589.00	
13	Fixing only exhaust fan after making hole in wall and making good damages and smooth cement finish etc. as practicable as possible and providing necy. length of PVC insulated wire and making connection for exhaust of following diameter: 22.5 cm (9") or 30 cm (12") PWD Schedule Page No-C-4;Item No-28(b)	2 3	Nos	247.00	494.00 741.00	
14	Fixing only louver shutter/cowl on wall with necy. bolts & nuts (6 mm dia x 62 mm long) For 22.5 cm(9") Exhaust fan or For 30 cm(12") Exhaust fan PWD Schedule Page No-C-4;Item No-28(b)	2 3	Nos	82.00	164.00 246.00	
15	S/F 240V 25A Modular type starter (brand approved by EIC)with 25 A. Modular switch DP MCB (C-Curve)and 4 Module G.I. Moduar type switch board with 4 Module Top Cover Plate flushed in wall incl. S/F switch board and Cover Plate and making necy. Connections with PVC Copper wire and earth connectivity wire etc. as per schedule [for Pump] [PWD Schedule Page No-E-19, Item No-17]	1	No	784.00	784.00	
16	Supply of 240V A.C Ceiling Fan (48" sweep,1200 mm complete)[Make-Crompton [for counter only] (UD & MA schedule P- 23, I- 70)		Each	2283.00	0.00	
17	Fixing only Ceiling Fan PWD sch P- C-3, I-21(a)		Each	66.00	0.00	
TOTAL C/F Rs.					33639.00	

Sl.No	Description of work	Quantity	Unit	Rate	Amount	Remarks	
TOTAL B/F Rs.					33639.00		
18	Supply & Fixing 240 V, 16/20 A Piano key type switch (Brand approved by EIC) on sheet metal switch board incl. S & F 100x100x65mm MS (16SWG) switch board and bakelite/perspex top cover of 3mm thick by Brass screws after making housing for switch by cutting bakelite/perspex cover and making necessary connections as required. (For Hand Dryer machine) PWD sch P- E-6, I-17(b)	2	No	201.00	402.00		
19	Supply and Fixing of 2 mm Polyvinyl glow sign board made of 22 SWG GI sheet box with 1"X1" aluminum channel for fixing the vinyl board after necessary cutting the letter as required & s\ f LED tube light fittings along with all accessories. (16 sqft @495.00/sqft) UD & MA schedule P-14, I-4	1	No	7920.00	7920.00		
20	Earthing installation by GI earth Spike (1830 X 20 mm) including 8SWG GI EarthWire & GI nuts, bolts, washer etc.	1	No	450.00	450.00		
Total Rs.					42411.00	37986.00	
Add 9% CGST Rs.					3816.99	3418.74	
Add 9% SGST Rs.					3816.99	3418.74	
Total With GST (A) Rs.					50044.98	44823.48	
Cess@1% Rs.					500.45	448.23	
Total Rs.					50545.43	45271.71	
Contingency Amount on "A"					Contingency@3% Rs.	1501.35	1344.70
(Total+GST)=Rs:					Total Rs.	52046.78	46616.41
Say Rs.					52047.00		

Say Rs. 46,616.00

***** Rupees Fifty Two Thousand Forty Seven Only.

Bhara.

SAE
Konnagar Municipality

Tufan Nandy

Sudagna Mukherjee
Finance Officer
Konnagar Municipality

P. Chandra
Executive Officer
Konnagar Municipality.

[Signature]
Chairman
Konnagar Municipality

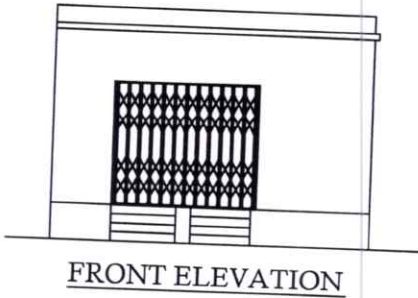
[Signature]
04.02.25
Junior Engineer
Electrical & Mechanical Division
SUDA

Technically Vetted Rs. 46,616.00
(Rupees Fifty six thousand six hundred sixteen only.)

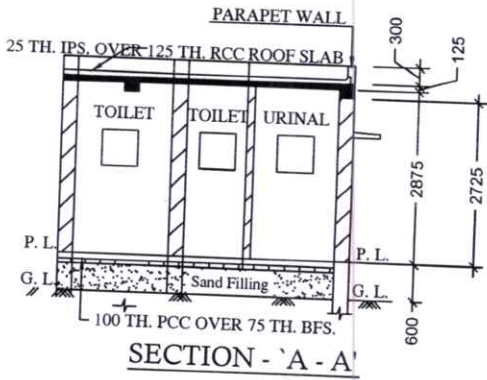
[Signature]
4.2.25
ASSISTANT ENGINEER
ELECTRICAL & MECHANICAL DIVISION
SUDA

[Signature]
5/2/25
Executive Engineer (E/M)
O/O the Secretary M.E. Dte.
Government of West Bengal

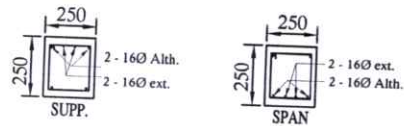
MODLE DRAWING FOR CONSTRUCTION OF C. T./P.T.
 TOILET SEATS 2 NOS URINAL 3 NOS AT KONNAGAR
 DWADAS MANDIR GHAT , WARD - 06,
 UNDER KONNAGAR MUNICIPALITY
 MODLE NO.- F



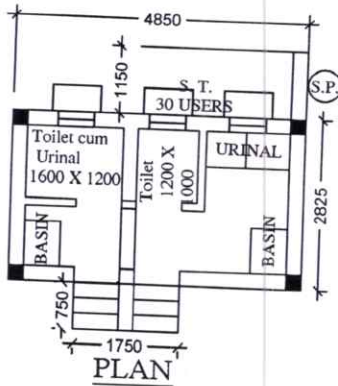
FRONT ELEVATION



SECTION - 'A - A'

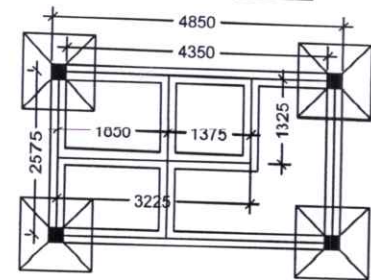
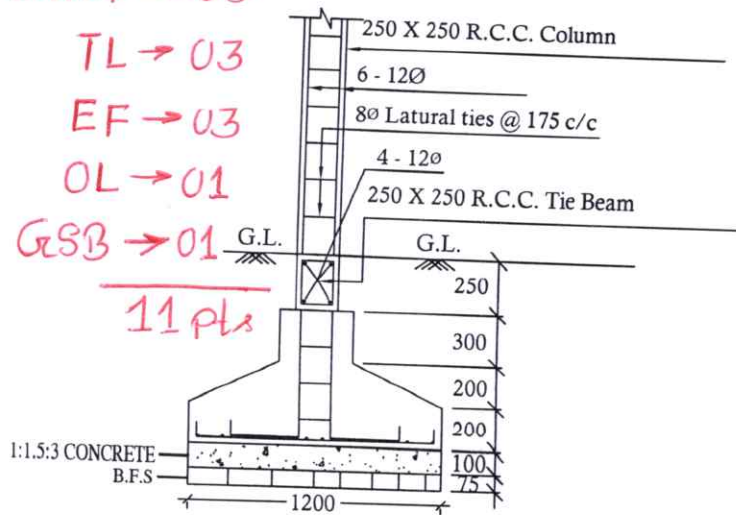


Details Of R.C.C Roof Slab & Beam
 (SCALE - 1 : 25)

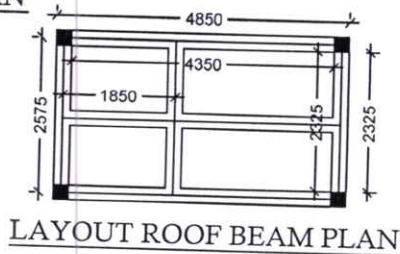


PLAN

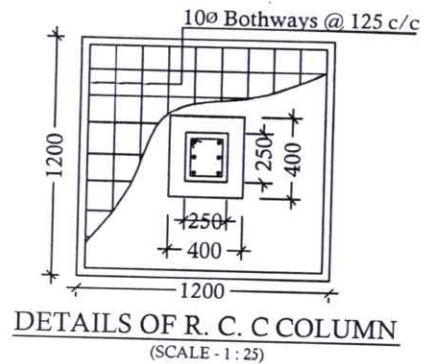
BHLP → 03
 TL → 03
 EF → 03
 OL → 01
 GSB → 01
11 pl's



COLUMN LAYOUT PLAN



LAYOUT ROOF BEAM PLAN



DETAILS OF R. C. C COLUMN
 (SCALE - 1 : 25)