

38-14

Civil & Sanitary Work Estimate (A) For Construction of the Community Toilet AT Community Toilet at Kawlay at Ward No.VI. for Mirik Municipality.(Unit-1) (Model 'F')

No. Of seat - Male - (W.C. -1 + Urinal -2) & Female - (W.C. -1 + Urinal -1) = Total (W.C. -2 & Urinal -3)

Rate As per PWD Building Works Schedule (Volume 1) With effect from 01.11.2017

Sl. No.	Item Description & Item No.							Quantity	Rate	Unit	Amount
	Details	Side	No.	L	B	H	QNTY.				
1	Earth work in excavation of foundation trenches or drains, in all sorts of soil (including mixed soil but excluding laterite or sandstone) including removing, spreading or stacking the spoils within a lead of 75 m. as directed. The item includes necessary trimming the sides of trenches, levelling, dressing and ramming the bottom, bailing out water as required complete. (a) Depth of excavation not exceeding 1,500 mm. PWD Building Works schedule Page - 1, Item -2.a							10.37	11927.00	%Cum	1236.83
	Column		4	1.200	1.2	1.125	6.480				
	Tie Beam		1	18.175	0.35	0.375	2.390				
	Reservior		1	1	1	1.5	1.500				
							10.370				
2	Single Brick Flat Soling of picked jhama bricks including ramming and dressing bed to proper level and filling joints with local sand. PWD Building Works schedule, Page- 14, Item - 1 (Corri. Page-01, Date-04-06-2018)							46.06	523.20 520.40	Sqm	24098.59 24,430.22
	Column		4	1.200	1.2		5.760				
	Tie Beam		1	18.175	0.25		4.540				
	Floor 1		1	4.6	2.325		10.700				
	Platform		1	17.3	1.2		20.760				
	Ramp		1	2.75	1.2		3.300				
	Reservior		1	1	1		1.000				
							46.060				
3	Supplying and laying Polythene Sheet (150gm / sq.m.) over damp proof course or below flooring or roof terracing or in foundation or in foundation trenches. PWD Building Works schedule, Page -47, Item -3							26.70	28.80	Sqm	768.96
	Open Space		1	17.3	1.5		25.950				
	Front Stair		1	1.5	0.5		0.750				
							26.700				
4	Cement concrete with graded jhama khaa (30 mm size) excluding shuttering In ground floor and foundation. (a) 1:3:6 proportion. N.B variety PWD Building Works schedule, Page -28, Item -B.1.a, 22B(u)(a) (Corri. Page-09, Date-04-06-2018) Rate Analysis 3rd							12.42	5372.52 5529.60	Cum	66726.68 68,677.63
	Column		4	1.200	1.2	0.1	0.580				
	Tie Beam		1	18.175	0.25		4.540				
	Floor 1		2	4.6	2.325	0.1	2.140				
	Platform		1	17.3	1.2	0.1	2.080				
	Ramp		1	2.75	1.2	0.1	0.330				
	Open Space		1	17.3	1.5	0.1	2.600				
	Front Stair		2	1.5	0.5	0.1	0.150				
							12.420				
5	25mm. thick damp proof course with cement concrete with stone chips (1:1.5:3) [with graded stone aggregate 10 mm nominal size] and admixture of water proofing compound as per manufacturer's specification followed by two coat of polymer based paint, (1st coat after 4 to 5 days of concrete laying and 2 nd coat just before brick masonry work) as directed (cost of water proofing compound & polymer based paint to be paid separately).(Chequering not required over concrete or painted surface). [Note: - Waterproofing as per item 9, polymer based paint as per item 8 (a) of subhead C of Section (C). PWD Building Works schedule, Page -47, Item -1 (Rate Analysis)							4.83	357.60 351.56	Sqm	1727.21 1698.03
			1	18.175	0.25		4.540				
			1	2.3	0.125		0.290				
							4.830				

6	Brick work with 1st class bricks in cement mortar (1:4) (a) In foundation and plinth PWD Building Works schedule, Page -15, Item-7.a (Rate Analysis)	3.43	7993.20 7978.98	Cum	27416.68 27367.90	
	GL 2 PL	1	18.175	0.250	0.600	2.730
	Ramp	1	2.75	0.250	0.225	0.150
	Platform	1	3.9	0.250	0.450	0.440
	Front Stair	1	1.5	0.25	0.3	0.110
						3.430
7	Brick work with 1st class bricks in cement mortar (1:4) (b) In superstructure, ground floor PWD Building Works schedule, Page -15, Item-7.b (Rate Analysis)	9.97	8260.80 8246.58	Cum	82,360.18 82218.40	
	Outer Wall	1	18.175	0.25	2.575	11.700
	Less Door	-2	1.2	0.25	2.1	-1.260
	Less Window	-7	0.6	0.25	0.45	-0.470
						9.970
8	125 mm. thick brick work with 1st class bricks in cement mortar (1:4) in ground floor. PWD Building Works schedule, Page - 16, Item - 16 (Corri. Page-03, Date-04- 06-2018) (Rate Analysis)	18.38	1030.33 1028.84	Sqm	18937.47 18910.13	
	Wall	1	5		2.75	13.750
	Less Door	-2	1		2.1	-4.200
	Spring	1	15.350		0.125	1.920
	Parapet	1	15.350		0.45	6.910
						18.380
9	Earth work in filling in foundation trenches or plinth with good earth, in layers not exceeding 150 mm. including watering and ramming etc. layer by layer complete. (Payment to be made on the basis of measurement of finished quantity of work). (a) With earth obtained from excavation of foundation. PWD Building Works schedule, Page - 1, Item -3.a	6.84	7754 11695.00	%Cum	530.37 799.94	
	2/3rd of Earth work		0.66	10.37		6.84
10	(A) Filling in foundation or plinth by silver sand in layers not exceeding 150 mm as directed and consolidating the same by thorough saturation with water, ramming complete including the cost of supply of sand. (payment to be made on measurement of finished quantity) (B) Do - by fine sand PWD Building Works schedule, Page - 2, Item -4.a	9.27	144111.00	%Cum	13359.09	
		1	4.6	4.05	0.45	8.38
	Ramp	1	2.75	0.75	0.225	0.46
	Platform	1	1	0.95	0.45	0.43
						9.27
11	Hire and labour charges for shuttering with centering and necessary staging upto 4 m using approved stout props and thick hard wood planks of approved thickness with required bracing for concrete slabs, beams and columns, lintels curved or straight including fitting, fixing and striking out after completion of works (upto roof of ground floor) (f) 25 mm to 30 mm shuttering without staging in foundation PWD Building Works schedule, Page -42, Item- 36.f	18.59	250.80	Sqm	4662.37	
	Foundation	16	1.20		0.15	2.88
	Tie Beam	2	19.3		0.3	11.58
	Coumn	16	0.3		0.725	3.48
	Ramp	1	2.75		0.125	0.34
	Platform	1	2.5		0.125	0.31
						18.590

12	Hire and labour charges for shuttering with centering and necessary staging upto 4 m using approved stout props and thick hard wood planks of approved thickness with required bracing for concrete slabs, beams and columns, lintels curved or straight including fitting, fixing and striking out after completion of works (upto roof of ground floor) (a) 25 mm to 30 mm thick wooden shuttering as per decision & direction of Engineer-In-Charge. PWD Building Works schedule, Page -42, Item- 36.a	59.33	400.80	Sqm	23779.46
	Coumn	16	0.25	2.575	10.300
	Roof Beam	1	19.3	0.300	5.790
	Roof Beam	1	36.35	0.175	6.360
	Lintel	2	40.15	0.2	16.060
	Lintel btm	2	1.500	0.25	0.750
		2	1.500	0.125	0.380
	Chajja	1	7.800	0.3	2.340
		1	23.100	0.075	1.730
	slab with b btm	1	4.850	2.825	13.700
	Slab Side	1	15.350	0.125	1.920
					59.330
13	Ordinary Cement concrete (mix 1:1.5:3) with graded stone chips (20 mm nominal size) excluding shuttering and reinforcement,if any, in ground floor as per relevant IS codes. a) Pakur Variety /Chandil Variety PWD Building Works schedule, p-26 Item 10 a (Rate Analysis)	7.42 7.417	8005.61	Cum	58422.00 59377.63
	Colm foot	4	1.2	1.2	0.15
	4*0.15/3*(1*1+0.3*0.3+1*0.3)=0.417				0.417
	Tool Column	4	0.3	0.3	0.425
	Column	4	0.25	0.25	3.025
	Tie Beam	1	18.175	0.25	0.25
	Lintel	1	5	0.125	0.2
		1	18.175	0.25	0.2
	Chajja	1	14.100	0.3	0.075
	Slab Beam	1	18.175	0.25	0.175
	Slab	1	4.850	2.825	0.125
	Wash Basin	2	2.400	0.6	0.075
					7.417
14	Reinforcement for reinforced concrete work in all sorts of structures including distribution bars, stirrups, binders etc initial straightening and removal of loose rust (if necessary), cutting to requisite length, hooking and bending to correct shape, placing in proper position and binding with 16 gauge black annealed wire at every intersection, complete as per drawing and direction. (a) For works in foundation and upto roof of ground floor/upto 4 m. (i) Tor steel/Mild Steel, JSPL/SWAYN/ELETRO/STEEL/RMB/JSW/SSL PWD Building Works schedule, Page - 43, Item - 40.a. (ii) Corri. 10th Page-01, Date-23-01-2020) (Rate Analysis)	0.728	70346.32	M.T.	52168.09 51212.12
		7.417	0.0125	7.85	0.728
15	Artificial stone in floor, dado, staircase etc with cement concrete (1:2:4) with stone chips, laid in panels as directed with topping made with ordinary or white cement (as necessary) and marble dust in proportion (1:2) including smooth finishing and rounding off corners including raking out joints or roughening of concrete surface and application of cement slurry before flooring..... 25 mm. thick roofing PWD Building Works schedule, P-48, It-6.ii (Rate Analysis) 3rd Compendia	13.70	340.83 337.48	Sqm	4669.37 4623.48
	roof	1	4.850	2.825	13.700
					13.700

16	Neat cement punning about 1.5mm thick in wall, dado, window sill, floor etc. NOTE:Cement 0.152 cu.m per100 sq.m. PWD Building Works schedule, P-192, It. No. 15 (Rate Analysis)	8.69	39.52 39.40	Sqm	343.43 342.35
	Below Plinth	1	19.300	0.45	8.690
					8.690
17	Labour for Chipping of concrete surface before taking up Plastering work. PWD Building Works schedule, P-192, It-1	59.33	21.00	Sqm	1245.93
	Same as shuttering sl no. 12		59.33		
18	Plaster (to wall, floor, ceiling etc.) with sand and cement mortar including rounding off or chamfering corners as directed and raking out joints including throating, nosing and drip course, scaffolding/staging where necessary (Ground floor).[Excluding cost of chipping over concrete surface] (i) With 1:6 cement mortar (c) 15 mm thick plaster PWD Building Works schedule, P-189 It- No. 1 (Rate Analysis)	167.67	219.84 206.27	Sqm	36860.57 34585.46
	Back side	1	4.850	2.875	13.940
	Outer wall	2	10.500	2.875	60.380
	Chajja	1	14.100	0.925	13.040
	Chajja Side	30	0.300	0.075	0.680
	Iner Wall	1	18.2	2.875	52.330
	Less Door	-2	1	2.1	-4.200
	Spring	1	37.5	0.325	12.190
	Parapet wall	1	19.8	0.975	19.310
					167.670
19	Plaster (to wall, floor, ceiling etc.) with sand and cement mortar including rounding off or chamfering corners as directed and raking out joints including throating, nosing and drip course, scaffolding/staging where necessary (Ground floor).[Excluding cost of chipping over concrete surface] (ii) With 1:4 cement mortar (c) 10 mm thick plaster PWD Building Works schedule, P-189 It- No. 1 (ii)(c) (Rate Analysis)	13.70	164.28 163.98	Sqm	2250.64 2246.55
	Slab bottom	1	4.85	2.825	13.700
20	Supplying, fitting and fixing fibre reinforced polymer (FRP) Composite door frame as per approved section with glass fibre reinforced plastic moulded skins and a special sandwich core, so as to impart monolitaheic composite structure as per approved technology of Department of Science and Technology (DST) to satisfy IS: 4020 door testing performance criteria.. (i) 66mm x 90mm PWD Building Works schedule, P-115, It - 3 (i)	9.30	624.00	Mtr	5803.20
		2	4.65		9.300
					9.300
21	Supplying, fitting & fixing fibre reinforced polymer (FRP) Composite door shutters as per approved design with glass fibre reinforced plastic moulded skins and a special sandwich core, so as to impart monolitaheic composite structure as per approved technology of Department of Science and Technology (DST) to satisfy IS:4020 door testing performance criteria. In ground floor. (ii) 25 mm thick P-125, It- 14(ii)	2.45	3241.20 3470.40	Sqm	7940.94 8502.48
		2	1.884	0.65	2.450
					2.450

22	Anodised aluminium barrel / tower / socket bolt (full covered) of approved manufactured from extruded section conforming to I.S. 204/74 fitted and fixed with cadmium plated screws . (v) 150mm long x 12mm dia. bolt. PWD Building Works schedule, P-144, It No. 26 (v)	4.00	106.80	Each	427.20
		2	2.00		4.000
23	Iron butt hinges of approved quality fitted and fixed with steel screws, with ISI mark. (vii) 100mm x 58mm x 1.90mm. PWD Building Works schedule, P-140, It No. -5 (vii)	6.00	56.40	Each	338.40
		2	3.00		6.000
24	Anodised aluminium decorative handle (hexagonal / fluted) of approved quality fitted and fixed complete. (i) 150mm plate x 10mm dia rod x 12mm hexagonal/fluted. PWD Building Works schedule, Page -146 . Item no-31,(i)	4.00	130.80	Each	523.20
		2	2.00		4.000
25	Iron hasp bolt of approved quality fitted and fixed complete (oxidised) with 16mm dia rod with concrete bolt and round fitting. .b)250mm long. PWD Building Works schedule, Page -141 . Item no-10 b)	2.00	195.60	Each	391.20
		2	1.00		2.000
26	(A) Supplying Aluminium casted body hydraulic door closer as per I.S.I. SOR, PWD, P- 244, I - 13(a)	4.00	768.00	Each	3072.00
		4	1.00		4.000
27	Rendering the Surface of walls and ceiling with White Cement base WATER PROOF wall putty of approved make & brand.(1.5 mm thick) In Ground Floor PWD Building Works schedule, PWD, P- 198, I - 5	175.43	146.40	Sqm	25682.95
	Same as Plaster Item - Plinth plaster				175.43
28	(b) Priming one coat on timber or plastered surface with synthetic oil bound primer of approved quality including smoothening surfaces by sand papering etc. PWD Building Works schedule, Page -200 . Item no- 1 (b)	175.43	45.60	Sqm	7999.61
	Same as Plaster Item - Plinth plaster				175.43
29	(A) Painting with best quality synthetic enamel paint of approved make and brand including smoothening surface by sand papering etc. including using of approved putty etc. on the surface, if necessary : Page -200 . Item no- 1 (b) On timber or plastered surface : super gloss (hi-gloss) - Two coats (with any shade except white) PWD Building Works schedule, Page -200 . Item no- 2(A)(a)(iv)	175.43	98.40	Sqm	17262.31
	Same as Plaster Item - Plinth plaster				175.43
30	Collapsible gate with 40mm x 40mm x 6mm Tee as top and bottom guide rail, 20mm x 10mm x 2mm vertical channels 100mm apart in fully stretched position 20mm x 5mm M.S. flats as collapsible bracings properly rivetted and washered including 38mm steel rollers including locking arrangements, fitted and fixed in position with lugs set in cement concrete and including cutting necessary holes, chasing etc. in walls, floors etc. and making good damages complete. In ground floor. P-106 Item-18 (3rd Corrigendam Page No 92)	4.62	5271.60	Sqm	24354.79
	gate	1	1.20		2.10
		1	1		2.10

						4.620				
31	(a) M.S.or W.I. Ornamental grill of approved design joints continuously welded with M.S, W.I. Flats and bars of windows, railing etc. fitted and fixed with necessary screws and lugs in ground floor.. (i) Grill weighing above 10 Kg./sq.mtr and up to 16 Kg./sq. mtr. PWD Building Works schedule, P-104 Item-13 A (i) (3rd Corrigendam Page No 91)						4.36	12343.20	Qntl	53816.35
	Grill	7	0.60	0.45	0.16	0.300				
	Boundary	1	27.00	0.9	0.16	3.890				
	Box for pump	3	0.60	0.6	0.16	0.170				
						4.360				
32	(ii) Grill weighing above 16 Kg./sq.mtr and above PWD Building Works schedule, P-104 Item-13 A (ii) (3rd Corrigendam Page No 91)						1.28	12111.60	Qntl	15502.85
	Railing	1	4.75	0.9	0.30	1.280				
33	a) Priming one coat on steel or other metal surface with synthetic oil bound primer of approved quality including smoothening surfaces by sand papering etc. PWD Building Works schedule, P/200 Item-1(a)						73.41	36.00	Sqm	2642.76
	gate	2	1	1.20	2.10	5.040				
		2	1	1	2.10	4.200				
	Grill	2	9	0.60	0.45	4.860				
	Boundary Partition	2	1	27.00	0.9	48.600				
	Box for pump	2	3	0.60	0.6	2.160				
	Railing	2	1	4.75	0.9	8.550				
						73.410				
34	(A) Painting with best quality synthetic enamel paint of approved make and brand including smoothening surface by sand papering etc. including using of approved putty etc. on the surface, if necessary : (b) On steel or other metal surface : (iv) Two coats (with any shade except white) PWD Building Works schedule, P-200 Item-2(b)(iv)						73.41	96.00	Sqm	7047.36
	Same as primeing on grill					73.41				
35	Supplying and laying true to line and level vitrified tiles of approved brand (size not less than 600 mm X 600 mm X 10 mm thick) in floor, skirting etc. set in 20 mm sand cement mortar (1:4) and 2 mm thick cement slurry back side of tiles using cement @ 2.91Kg./sqM or using polymerised adhesive (6 mm thick layer applied directly over finished artificial stone floor/Mosaic etc without any backing course) laid after application slurry using 1.75 Kg of cement per sqM below mortar only, joints grouted with admixture of white cement and colouring Pigment to match with colour of tiles / epoxy grout materials of approved make as directed and removal of wax coating of top surface of tiles with warm water and polishing the tiles using soft and dry cloth upto mirror finish complete including the cost of materials, labour and all other incidental charges complete true to the manufacturer's specification and direction of Engineer-in-Charge. (White cement, synthetic adhesive and grout material to be supplied by the contr[re] (I) With application slurry @1.75 kg/ Sq.m, 20 mm sand cement mortar (1:4) & 2 mm thick cement slurry at back side of tiles, 0.2 kg/ Sq.m white cement for joint filling with pigment. (A) Deep Colour & White PWD Building Works schedule, Page-66 Item-36 (A) (3rd Corrigendam , Page -36)						14.32	2049.26 2055.60	Sqm	29345.46 29436.19
	floor	1	4.85	2.825		13.700				
	Door Gap	2	0.75	0.125		0.190				
		1	1	0.125		0.130				
		1	1.2	0.25		0.300				
						14.320				

36	Supplying, fitting & fixing 1st quality Ceramic tiles in walls and floors to match with the existing work & 4 nos. of key stones (10mm) fixed with araldite at the back of each tile & finishing the joints with white cement mixed with colouring oxide if required to match the colour of tiles including roughening of concrete surface, if necessary or by synthetic adhesive & grout materials etc. B) Wall Area of each tile above 0.09 Sq.m Other than Coloured decorative including white Building Works schedule, page-64, Item:35.(B.) (b).(ii) Corrigendam ,Page 36)	b) ii) PWD (3rd	129.25	1426.80 1508.06	Sqm	184413.90 194917.27
	Out side	1	10.5	2.1	22.050	
	Less Door	-1	1.2	2.1	-2.520	
	Door frame side	1	5.2	0.175	0.910	
	Inner	1	61.8	2.1	129.780	
	Less Door	-4	0.75	1.95	-5.850	
		-1	1.2	2.1	-2.520	
		-6	1	2.1	-12.600	
					129.250	
37	Supplying & laying as per IRC-SP:063-2004 paver unit of any shade of approved quality as per relevant IS code, laid in pattern as directed in pavement, footpath, driveway (paver block only), etc including necessary underlay complete in all respect with all labour and material. a) 25 mm thick Tiles as per IS: 1237-2012 for footpath,ramp,staircase of public building(over 25 mm thick (Avg) Cement mortar (1:3) & Cement Slurry @ 4.4 kg/Sq.m at back side of Block. Cement for Mortar & Slurry to be supplied by Department). (ii) Coloured Decorative PWD Building Works schedule, page-74, Item:48(a)-ii (3rd Corrigendam ,Page 37)		45.19	1098.00	Sqm	49618.62
	Open Space	1	25	1.5	37.500	
	Ramp	1	2.75	1.2	3.300	
		1	2.75	0.225	0.620	
	Platform	1	1.95	1.2	2.340	
	Stair	1	1.5	0.95	1.430	
					45.190	
38	Supplying, fitting & fixing granite slabs 15mm to 18 mm. thick with uniform texture & without decorative veins in columns, wall, facia, rise etc. with 15 mm thick [avg] cement mortar (1:2) including making suitable arrangements to hold the stones properly by brass / copper hooks including pointing in cement mortar (1:2) (1 white cement : 2 marble dust) with admixture of pigment matching the stone shades all complete as per direction of the Engineer-in-charge including cost of all materials, labours, scaffolding, staging, curing and roughening of concrete surface complete. [Using cement slurry at back side of granite @ 4.4 kg/sq.m & white cement slurry for joint filling @ 1.8 kg/sq.m] In ground floor each Granite slab 0.6 to 1.0 Square meter. PWD Building Works schedule, page-63, Item:33(a)- (3rd Corrigendam ,Page 37)	(a) Area of	3.83	4428.00 3685.85	Sqm	16959.24 14116.80
	For Wash Basin	2	2.55	0.75	3.830	
39	Supplying, fitting and fixing 18 mm thick marble partition slab with chawk doongri marbel square cut, both sides polished with two front corners rounded and edges polished. Sanitary and plumbing work schedule P-81, It-13		0.72	1711.20	Sqm	1232.06
		1	1.2	0.6	0.72	

40	Supplying profiles of required section made of Aluminium Alloy Extrusions conforming to IS: 732-1983 and IS: 1285- 1975; Anodized (with required film thickness and specified colour / natural) matt finished conforming to IS: 1868-1983 for fabrication of composite door, sliding & casement windows, partitions, formed of basic sections of any ISI embossed / certified make and brand as per direction of Engineer - In- Charge. (Payment will be made on finished length of the work). (A) In 10-12 Micron thickness Anodizing film white h) Louvered window. bottom and side member. P/W/D Building Works schedule PWD, P-232, I- 1(h) i	14.70	229.20	M	3369.24
		7	2.1		14.700
41	ii) Louvered Section.	12.60	820.80	M	10342.08
		21	0.6		12.600
42	iii) Cleat angle (Non-anodized).	11.34	328.80	M	3728.59
		21	0.54		11.3400
43	Labour charge for fabrication and installation of composite door, window, partitions made from anodized extruded alloy aluminium sections for the following units:- (A) Glazed aluminium sliding windows made of extruded and anodized alloy aluminium sections, fabrications, including cutting to proper shape and size, drilling and aligning of window shutter frame fitted with in built locking arrangements, sliding rollers and other necessary fittings, fixture, adhesives and joineries along with extruded neoprene or EPDM gasketing in between window frame and masonry work (walls, column, beam.lintels etc.) as well as between glass and shutter frame for fixing glass and Polysulphide sealant and in between shutter and window frame where necessary including cutting to requisite size and fixing glass as per drawing, specification and direction of EIC. The rate includes the hire charge of all tools and plants, including all incidental charges, adhesive, joineries such as screw, cleat angle etc. but excluding the cost of extruded aluminium sections, glass, neoprene / EPDM gasket, locking arrangement and rollers. v) Louvered window. P/W/D Building Works schedule SOR, PWD, P-239, I- 2 (v)	1.89	730.00	Sqm	1379.70
		7	0.6	0.45	1.890
44	Supplying bubble free float glass of approved make and brand conforming to IS: 2835-1987. iv) 5mm thick coloured / tinted / smoke glass. P/W/D Building Works schedule, P-243, I-9	1.89	702.00	Sq.M.	1326.78
		7	0.6	0.45	1.890
45	Painting block letters or digits in Black Japan or any approved paint as per direction. Size above 7.5 cm. and upto 10 cm. P/W/D Building Works schedule, P-268, It-17(e)	650.00	14.40	Each	9360.00
46	Supply and Fixing of 2 mm Polyvinyl glow sign board made of 22 SWG GI sheet box with 1"X1" aluminum channel for fixing the vinyl board after necessary cutting the letter as required & s\f LED tube light fittings along with all accessories UDMA Electrical shdule P-14, It NO. 4	15.00	495.00	Sq.F.	7425.00
		1	5	3	15
47	Supplying and Planting of different plant / trees (Supplying well grown plants bushy and healthy, minimum height as specified i.e. exposed height including all leads & lift, carriage, handling, manuring, applying presticide and fertilizer etc. . i) Furcaria veriegated 10-12 leaves in height 20-30cm in earthen pots of size 25cm. P/W/D Building Works schedule, Page -261, It- 9 (i)	12	194.40	Each	2332.80
48	x) Ficus blakii (F. Vivicon) well branched (Bushy) of height 120cm - 135 cm in earthen pot of size 30cm. P/W/D Building Works schedule, Page -261, It- 9 (x)	9	224.40	Each	2019.60

49	xxvi) Areca Palm 4 - 5 suckers of height 90 cm to 105 cm in earthen pots of size 25 cm. Building Works schedule, Page -261, It- 9 (xxvi)	PWD	6	152.40	Each	914.40
50	Supplying, fitting and fixing Anglo-Indian W.C. in white glazed vitreous china ware of approved make complete in position with necessary bolts, nuts etc. a) With 'P' trap (with vent) S&P Schedule, page-79, item no -3 (a)	PWD	4	3724.80	Each	14899.20
51	Supplying, fitting and fixing Closet seat of approved make with lid and C.P. hinges, rubber buffer and brass screws complete .(b) Anglo Indian (i) Plastic (hallow type) White S&P Schedule, page-81,item no 10.b.i	PWD	2	456.00 582.00	Each	912.00 1164.00
52	Supplying, fitting and fixing Shallow water closet Indian pattern (I.P.W.C.) of approved make in white vitreous chinaware in position (excluding cost of concrete for fixing). (i) 580 mm long Schedule, page-79,item no -1 (i)	PWD S&P	2	1124.40 1162.60	Each	2248.80 2335.20
53	Supplying, fitting and fixing Flat back urinal (half stall urinal) in white vitreous chinaware of approved make in position with brass screws on 75 mm X 75 mm X 75 mm wooden blocks complete (ii) 470 mm X 280 mm X 340 mm PWD S&P Schedule, page.80,item no-6/(ii)		2	1134.00	Each	2268.00
54	Supplying, fitting and fixing Squating plate with integral flushing in white vitreous chinaware of approved make in cement concrete (6:3:1) with jhama chips complete. (Payment of concrete will be paid seperately). (i) 450 mm X 350 mm S&P Schedule, (P - 80, Item. No. - 7 ,	PWD	1	1057.20	Each	1057.20
55	Supplying, fitting and fixing 10 litre P.V.C. low-down cistern conforming to I.S. specification with P.V.C. fittings complete,C.I. brackets including two coats of painting to bracket etc. PWD S&P Schedule. Page No.-36 Item No.-2.		2	1218.00	Nos	2436.00
56	Supplying,fitting and fixing 32 mm dia. Flush Pipe of approved make with necessary fixing materials and clamps complete. i) Polythene Flush Pipe PWD S&P Schedule, Page no 81. Item no. 11(i)		4	186.00	Each	744.00
57	Supplying, fitting and fixing urinal flush pipe fittings of approved brand. (a) C.P. urinal flush pipe fittings range of one PWD S&P Schedule, S.P.81,item-12/a		2	496.80	Each	993.60
58	Supplying, fitting and fixing white vitreous china best quality approved make wash basin with C.I. brackets on 75 mm X 75 mm wooden blocks, C.P. waste fittings of 32 mm dia., mending good all damages and painting the brackets with two coats of approved paint. (ii) 550 mm X 400 mm size PWD S&P Schedule, P-41, It 2 (ii)		2	2649.60	Each	5299.20
59	Supplying,fitting and fixing approved brand P.V.C. CONNECTOR white flexible, with both ends coupling with heavy brass C.P. nut, 15 mm dia., (iii) 600 mm long PWD S&P Schedule, Page No.-43 Item No.-9-iii PWD,		7	128.40	Each	898.80
60	Supplying,fitting and fixing approved brand 32 mm dia.P.V.C. waste pipe, with PVC coupling at one end fitted with necessary clamps. (iv) 1050 mm long each PWD S&P Schedule, Page No.-43 Item No. 10-iv		7	109.20	Each	764.40
61	(f) Hand Shower(Health Faucet) with 1mtr Flexible Tube with Wall Hook(Equivalent to Code No.573 & Model -ALLIED of Jaquar or similar). PWD S&P Schedule, Page No.-3 Item No.- 3 f,		2	1501.20	Each	3002.40
62	(a) (i) Chromium plated Bib Cock short body (Equivalent to Code No. 511 & Model - Tropical / Sumthing Special of ESSCO or similar brand). PWD S&P Schedule, Page No.-6 Item No.-7-a-i		6	646.80	Each	3880.80

63	(b) (i) Chromium plated Stop Cock (Equivalent to Code No. 513(A) & 513(B) & Model - Tropical / Sumthing Special of ESSCO or similar PWD S&P Schedule, Page No.-6 Item No.-7-b-i	6	591.60	Each	3549.60
64	Supplying, fitting and fixing shower of approved brand and make. (ii) Chromium plated round shower with revolving joint (Equivalent to Code No. 541(N) & Model - Tropical / Sumthing Special of ESSCO or similar brand). PWD S&P Schedule, Page No.-3 Item No.-3- a-ii	2	432.00	Each	864.00
65	(iii) Chromium plated shower arm 240 mm long (Equivalent to Code No. 536(A) & Model - Tropical / Sumthing Special of ESSCO or similar brand). Page No.-3 Item No.-3-a-(iii), PWD,VOL-II , 2017-18	2	370.80	Each	741.60
66	Chromium plated angular Stop Cock with wall flange (Equivalent to Code No. 5053 & Model - Florentine of Jaquar or similar brand). PWD S&P Schedule, Page No.-6 Item No.-7-d-i,	5	978.00	Each	4890.00
67	Supplying, fitting and fixing pillar cock of approved make. a) (i) CP Pillar Cock - 15 mm. (Equivalent to Code No. 507 & Model - Tropical / Sumthing Special of ESSCO or similar brand). (P. No. - 45, Item. No. - 19(a)i, Pwd Sanitary Plumbing Schedule 2017)	4	666.00	Each	2664.00
68	Supplying, fitting and fixing PVC pipes of approved make of Schedule 80 (medium duty) conforming to ASTM D - 1785 and threaded to match with GI Pipes as per IS : 1239 (Part - I). with all necessary accessories, specials viz. socket, bend, tee, union, cross, elbo, nipple, longscrew, reducing socket, reducing tee, short piece etc. fitted with holder bats clamps, including cutting pipes, making threads, fitting, fixing etc. complete in all respect including cost of all necessary fittings as required, jointing materials and two coats of painting with approved paint in any position above ground. (Payment will be made on the centre line measurements of total pipe line including all specials. No separate payment will be made for accesories, specials. Payment for painting will be made seperately) (a) For Exposed Work PVC Pipes, 25 mm No.-12 Item No.-19-i(a), PWD,VOL-II , 2017-18	25	212.40	Mtr	5310.00
69	(a) (a) For Exposed Work PVC Pipes, 15 mm Page No.-12 Item No.-19-i(a), PWD,VOL-II , 2017-18	10	121.20	Mtr	1212.00
70	(b) For Concealed Work PVC Pipes, 15 mm No.-12 Item No.-19-i(b), PWD,VOL-II , 2017-18	10	164.40	Mtr	1644.00
71	Supplying and fitting fixing of gunmetal wheel valve of approved brand and make tested to 21 Kg per sq. cm. 25 mm dia(E5) PWD S&P Schedule, P-5 It-5,vii),	2	933.60	Each	1867.20
72	Supplying P.V.C. water storage tank of approved quality with closed top with lid (Black) - Multilayer (b) 1000 litre capacity PWD S&P Schedule, page.37,item no-6 (b)	2	6153.60	Each	12307.20
73	Labour for hoisting plastic water storage tank. (i) Upto 1500 litre capacity. (a) Upto 1st story from G.L. PWD S&P Schedule, page.37,item no-10 (i)(a)	2	96.00	Each	192.00
74	Labour for punching hole in plastic water storage tank upto 50 mm dia. PWD S&P Schedule, (P. No. - 38, Item. No. - 13	4	19.00	Each	76.00

75	Supply of UPVC pipes (B Type) & fittings conforming to IS-13592-1992.(A) (i) Single Socketed 3 Meter Length, (b) 110 mm PWD S&P Schedule, Page No.-68 Item No. 23,(A)(i)(b)	30	350.40	Mtr	10512.00
76	(B) Fittings (i) Coupler, (b) 110 mm	15	102.00	Each	1530.00
77	(ii) Plain Tee, (b) 110 mm	12	102.00	Each	1224.00
78	(iii) Door Tee, (b) 110 mm	9	234.00	Each	2106.00
79	ix) Bend 45°, (b) 110 mm	9	106.80	Each	961.20
80	xi) Door Bend (T.S.), (b) 110 mm	7	176.40	Each	1234.80
81	xvi) Pipe Clip, (b) 110 mm	30	25.20	Each	756.00
82	xvii) W.C. Connector (150 mm long) 125 X 110(W/WC Ring) 75 mm	6	170.40	Each	1022.40
83	xxxi) Plain Floor Trap with Top tile & Strainer 75 mm	6	172.80	Each	1036.80
84	L) Rubber Ring, (b) 110 mm	30	20.40	Each	612.00
85	C)Rubber Lubricant 500 ML	5	224.40	500 ML	1122.00
86	D)Solvent Cement 250 ML	5	123.60	250 ML	618.00
87	Labour for fitting and fixing U.P.V.C. pipes for above ground work including cost of jointing materials etc. fitting and fixing all necessary specials, cutting pipes, cutting holes in total pipeline including specials. (B) Under ground, (ii) 110 mm dia. PWD S&P Schedule, (P. - 74, Item. No. - 24 (B)	20	84.00	Mtr	1680.00
88	Supplying, fitting & fixing UPVC pipes A- Type and fittings conforming to IS:13592-1992 with all necessary clamps nails, including making holes in walls, floor etc. cutting trenches in any soil through masonry concrete structures etc if necessary and mending good damages including joining with jointing materials (Spun Yarn, Valamoid/Bitumen/M-Seal etc) complete. A) UPVC Pipes: (i) 75 mm. Dia. (P. - 212, Item. No. - 21 (A)(i) , (B),(c),(i) & (B), (d),(i), Pwd volume-i, 2017)	6	225.60 237.60	Mtr	1353.60 1425.60
89	B) UPVC Fittings: c) Bend 87.5 degree (i) 75 mm. Dia.	2	100.80	Mtr	201.60
90	B) UPVC Fittings: d) Shoe (i) 75 mm. Dia.	2	93.60	Mtr	187.20
91	Constructing Inspection pit of inside measurement 600mm X 600mm X upto 600mm (depth) with 250 mm thick 1st. class brick work in cement mortar (1:4) on all sides, bottom of the pit consisting of 100 mm thick cement concrete (1:3:6) with stone chips over a layer of jhama brick flat soling,15 mm thick (1:4) cement plaster to inside walls and out-side walls upto G.L. and 20 mm.thick (1:4) plaster to bottom of the pit, providing necessary invert with cement concrete (1:3:6) with stone chips as per direction, neat cement finishing to entire internal surfaces, top of the pit covered with 100 mm thick R.C.C. slab (1:1.5:3) with stone chips and necessary reinforcements upto 1% and shuttering including 6 mm thick cement plaster (1:4) in all external surfaces of the slab and one 560 mm dia. R.C.C. manhole cover of approved make supplied, fitted and fixed in the slab with necessary fittings, necessary earthwork in excavation in all sorts of soil, filling sides of the pit with earth and removing spoils after work complete in all respect with all costs of labour and materials. i) With Pakur variety (Other than SAIL/TATA/RINL). PWD S&P Schedule, S.P.87,Item No-1/(i), 7th Corrigena Volume ii	3	9276.13 98.40	Each	27828.40 196.80

92	Construction of septic tank of different capacities as per approved drawing with 1st class brick work in cement mortar (1:4) including two 560 mm dia. R.C.C. manhole cover(heavy type)of approved make supplied, fitted and fixed in the 100mm thick R.C.C (1:1.5:3) top slab with necessary fittings, 20mm thick cement plaster (4 : 1) with neat cement finish to the internal surfaces and 15 mm thick cement plaster (4 : 1) to outside wall upto 200 mm below G.L floor finished with 25 mm thick grey artificial stone over 100 mm thick R.C.C(1:1.5:3) bottom slab including supplying, fitting and fixing all necessary specials, fittings, S.W. tees, C.I. foot rest etc. including excavation earth in all sorts of soil, shoring, bailing out and pumping out water as necessary, ramming, dressing the bed and refilling the sides of the tanks with earth, removing spoils, filling up the chamber with clear water, removing foreign materials from the chamber and including constructing attached inspection pit as per approved drawing and connecting all necessary pipes, joints etc. with internal plaster work and artificial stone flooring is to be done with admixture of water proofing compound @ 0.5% by weight of cement with all costs of labour and materials. (iv) For 30 users A) With Pakur variety. (JSW/JSPL/SHYAM/SRMB/ELECTROSTEEL/SSL) PWD S&P Schedule, S.P.88,Item No-3(iv)(A) 7th Corrigenda Volume ii	1	79838.34	Each	79838.34
93	Construction of circular soak well 2.5 metre deep in all types of sandy soils with dry brick work upto 1.6 metre from the bottom having 150 mm intermediate cement brick work (1:4) band all round and cement brick work (1:4) upto 0.90 metre from top with 20mm thick cement plastering (1:4) to inside face upto the depth of cement brick work, 15mm thick cement plaster (1:4) on outer face from top of the well upto G.L. and 6 mm thick cement plaster (1:4) on top of the R.C.C. cover slab including filling bottom 1.00 metre of inside of the well with brick metal (50 mm to 63 mm size) including R.C.C. cover slab of 100 mm thick with cement conc (1:1.5:3) with stone chips with necessary reinforcement and shuttering including one 560 mm dia. R.C.C. manhole cover (heavy type)of approved make supplied, fitted and fixed in the cover slab with necessary fittings, making necessary arrangements for pipe connections, excavation of well including shoring, dewatering and removing the excess earth from the premises as per direction complete in all respect with all costs of labour and materials. With 250 mm thick dry brick work and 250 mm thick cement brick work (1:6) and 1.00m inside dia. (Other than SAIL/TATA/RINL) S.P.89,Item No-4 7th Corrigenda Volume ii	1	22739.68	Each	22739.68
94	Supplying, fitting and fixing towel rail with two brackets. (a) C.P. over brass (ii) 25 mm dia. and 600 mm long PWD S&P Schedule, p No 82 I No- 22 (a)(ii)	12	516.00	Each	6192.00
95	Supplying, fitting and fixing cast iron raised rain proof tank cover 500 mm dia. with locking arrangements (weighing not less than 12 kg). PWD S&P Schedule, . page-37,item no -8	1	1515.60	Each	1515.60
96	Supplying, fitting and fixing bevelled edged mirror 5.5 mm thick silver red as per I.S. 3438 / 1965 together with brass C.P. hinges. (ii) 600 mm X 450 mm PWD S&P Schedule, P-81, It-15(ii)	6	580.80	Each	3484.80
97	Supplying, fitting and fixing soap holder. (b) Fibre glass Sanitary and plumbing work schedule P-82, It-18(b)	16	69.60	Each	1113.60
98	Supplying, fitting and fixing porcelain toilet paper holder of approved make with wooden spindle as necessary. (i) Roll type size 250 mm X 125 mm (A5) Sanitary & Plumbing works p No 83 I No- 23 9i)	6	351.60	Each	2109.60
99	Supplying, fitting and fixing glass shelf with aluminium guard rails. (a) Ordinary type with 5.5 mm sheet glass (i) 450 mm X 125 mm Sanitary and plumbing work schedule P-81, It-16(a)(i)	10	409.20	Each	4092.00
		Sub Total Of (A)			1173877.76
	11,70,706.26	Add S.G.S.T. @	9%		105649.00
	1,05,363.56	Add C.G.S.T. @	9%		105649.00
	1,05,363.56				

13,81,433.38	Cost Of Civil & Sanitary Work	1385175.76
13,814.33	Add L.W.C. @ 1%	13851.76
13,95,247.71	Total payable Amount Including L.W.C.	1399027.52
41,443.00	Add Contengency @3%	41555.27
14,36,690.71	Total payable Amount Including L.W.C. and contengency	1440582.79
14,36,691.00	Say Rs.	1440583.00
(RUPESS FOURTEEN LAKHS FOURTY THOUSAND FIVE HUNDRED AND EIGHTY THREE) ONLY		

Thirly Six Six Ninety One
 Vatted
 28/04/28

Estimate For Non Schedule item for Construction of the Public Toilet Block for Dinjata College at ward no-01 under Dinjata Municipality. (Model 'F')					
No. of seat - Male - (W.C. -2 + Urinal -3) & Female - (W.C. -2 + Urinal -2) = Total (W.C. -4 & Urinal -5)					
Sl. No.	Item Description & Item No.	Quantity	Rate	Unit	Amount
1	standard plastic Bucket (25 litter)	5	410.00	Each	2050.00
2	standard plastic Bucket (10 litter)	6	250.00	Each	1500.00
3	standard plastic Mug (2.5 litter)	5	81.00	Each	405.00
4	standard plastic Mug (1.5 litter)	6	56.00	Each	336.00
5	standard plastic Covered dustbin (12lits)	6	290.00	Each	1740.00
6	standard plastic Covered dustbin With Pedal (12lits)	2	345.00	Each	690.00
7	Godrej Steel Lock & Key With 3 lever	2	320.00	Each	640.00
8	Air freshner(pack of 4nos)	15	175.00	Each	2625.00
9	Air freshner (Napthaline 250 gm)	15	170.00	Each	2550.00
10	supplying paper Napkin (Pack of 100 pcs)	5	48.00	Each	240.00
11	Supplying Sanitary Napkin (Whisper or similar make 50 pcs)	5	420.00	Each	2100.00
12	Double side plastic brush	2	125.00	Each	250.00
13	Plastic Broom	2	170.00	Each	340.00
14	Gala double lip floor wiper	2	290.00	Each	580.00
15	Harpic (blue 1000 ml)	5	240.00	Each	1200.00
16	Harpic (Red 500 ml)	3	125.00	Each	375.00
17	colin glass or surface cleaner	2	175.00	Lit	350.00
18	Muriatic Acid	2	125.00	Lit	250.00
19	Bleaching powder	6	105.00	Kg	630.00
20	Dettol ,lifeboy or similar make soap	15	35.00	Each	525.00
21	Rubber hand gloves	5	68.00	Pair	340.00
22	supplying roaster /register for keeping acoount of regular cleanig	1	160.00	Each	160.00
23	Supplying and fixing sinage with fixing stand post for public toilet for visible to passersby	3	1170.00	Each	3510.00
24	Supply & Fixing Signage ACP Base & reflective vinyl (3'x2.5')	2	4550.00	Each	9100.00
25	Supply & Fixing of P/M set (1 H.P) Monoblock for U/G Reservoir (Cromptom/ Havells)	1	6350.00	Each	6350.00
Sub Total Of (B)					38836.00

	Add S.G.S.T. @	9%	3495.24
	Add C.G.S.T. @	9%	3495.24
	Cost Of Non Schedule Work		45826.48
	Add L.W.C. @	1%	458.26
	Total payable Amount Including L.W.C.		46284.74
	Add Contengency @3%		1374.79
	Total payable Amount Including L.W.C. and contengency		47659.53
	Say Rs.		47660.00


Sub-Assistant Engineer
Mirik Notified Area Authority


Chairperson
Board of Administrators
Mirik Notified Area Authority

Public F

CONSTRUCTION OF COMMUNITY TOILET MODEL NO - A NON SCHEDULE WORKS					
SL.NO	Item Description & Item No.	Quantity	Rate	Unit	Amount
1	Non Shedule Item Sl. No. 91-106 (Order as per SUDA) standard plastic dustbin (12lits)	5	350	Each	1750.00
2	Air freshner(pack of 4nos)	8	216	Each	1728.00
3	Air freshner (Napthaline 250 gm)	5	210	Each	1050.00
4	supplying paper Napkin	5	50	Each	250.00
5	Supplying Sanitary Napkin (Whisper or similar make 50 pcs)	4	520	Each	2080.00
6	Harpic (blue 500 ml)	4	300	Each	1200.00
7	Harpic (Red 500 ml)	4	150	Each	600.00
8	Gala double lip floor wiper	4	350	Each	1400.00
9	colin glass or surface cleaner	2	200	Lit	400.00
10	Muriatic Acid	2	145	Lit	290.00
11	Bleaching powder	4	120	Kg	480.00
12	Dettol ,lifeboy or similar make liquid soap	8	140	Lit	1120.00
13	Rubber hand gloves	6	80	Pair	480.00
14	Double side plastic brush	6	125	Each	750.00
15	Plastic Broom	4	170	Each	680.00
16	supplying roaster /register for keeping acoount of regular cleanig	3	200	Each	600.00
17	Signage ACP Base & reflective vinyl (1	3776	Each	3776.00
18	Supplying and fixing sinage with fixing stand post for public toilet for visible to passersby	5	1000	Each	5000.00
19	Glow sign board Name and contact details of the following are displayed prominently-Toilet identification number,name of ULB under whose jurisdiction toilet is covered, ward number and maintenance authority prominently displayed for each toilet block Supervisor,Supervisors agency and area Sanitary Insepector (D3)	1	5000	Each	5000.00
20	SMS/any other ICT based feedback system(with number displayed on which SMS has to be sent)(A9)	1	5000	Each	5000.00
21	Lettering on toilet wall for display of name and contact details of ULB,Ward number and name of maintanance authority,sanitary inspector,etc(D3)	1	1000	Each	1000.00
22	Mini Tulu Pump	1	4000	Each	4000.00
23	Installation of Sinage	1	2071	Each	2071.00
				Rs.	40705.00
	Add for Labour welfare Cess @ 1 %			Rs.	407.05
			Total	Rs.	41112.05
	Add for Contingency @ 3 %			Rs.	1233.36
			TOTAL	Rs.	42345.41
			say	Rs	42,345
RUPEES FOURTY TWO THOUSAND THREE HUNDRED AND FOURTY FIVE)ONLY					

May be Vetted

28/04/25
Junior Engineer
Siliguri Division M.E. Dte.
Govt. of West Bengal

28.04.25
Assisting Engineer
Siliguri Division M.E. Dte.
Govt. of West Bengal

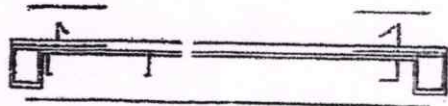
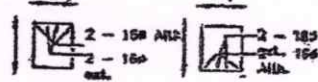
Vetted

11/3/25
Executive Engineer
Siliguri Division
M.E. Directorate
Deptt. of U.D.M.A.
Govt. of West Bengal

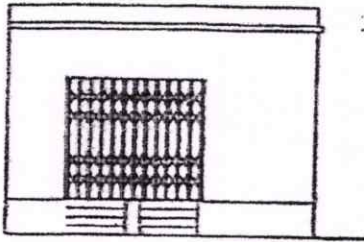
Sub-Assistant Engineer
Mirik Notified Area Authority

Chairperson
Board of Administrators
Mirik Notified Area Authority

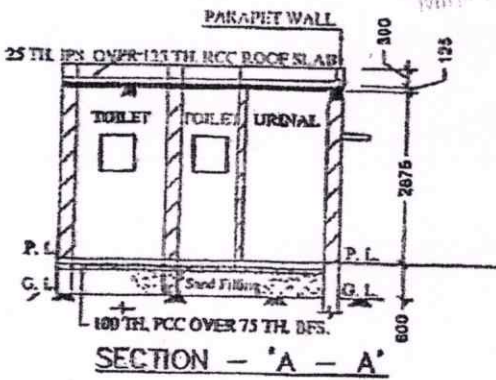
MODE DRAWING FOR CONSTRUCTION OF C. T./P.T.
TOILET SEATS 2 NOS URINAL 3 NOS
MODE NO.- F



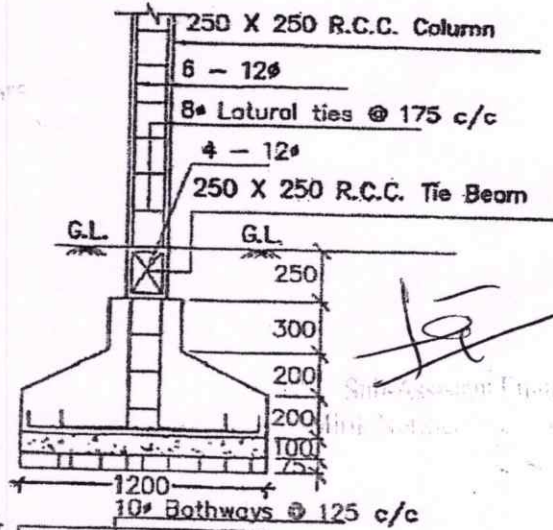
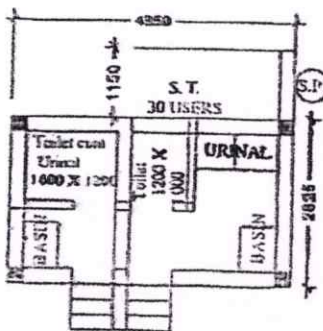
Details Of R.C.C Roof Slab & Beam
(SCALE - 1 : 25)



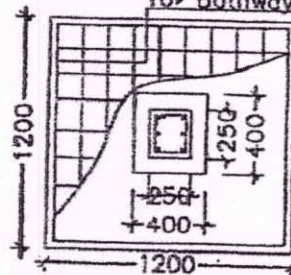
FRONT ELEVATION



SECTION - 'A - A'



DETAILS OF R. C. C COLUMN
(SCALE - 1 : 25)



28/4/18
Junior Engineer
Siliguri Division M.E. Div.
Govt. of West Bengal

- BULK HEAD LIGHT → 03
- TUBE LIGHT → 03
- EXHAUST FAN → 03
- OUTDOOR LIGHT → 01
- CEILING FAN → 01
- GLOW SIGN BOARD → 01

Checked & Verified

Prabin
Engineer (Civil)
HILL INSPIRATION



Prabin
Sub-Assistant Engineer
Mirik Notified Area Authority

Prabin
Chairperson
Board of Administrators
Mirik Notified Area Authority

12 pts

14

**NAME OF WORK:- ESTIMATE FOR ELECTRICAL WORK OF 2 SEATED COMMUNITY TOILET AT AT
KAWLAY COMMUNITY HALL AT KAWLAY AT WARD NO. - 6. UNDER MIRIK MUNICIPALITY OF
WEST BENGAL (MODEL NO -F)
[ASPIRATIONAL PARAMETER]**

* As per PWD & I & WD schedule district charges will be applicable on PWD & I & WD schedule items

* No district charges will be applicable on non-schedule items

Sl No.	Item Description	Unit	Quantity	Rate	Amount
1	Distribution wiring in 2 x 22/0.3 (1.5 sqmm) single core stranded 'FR' PVC insulated & unsheathed copper wire (Brand approved by EIC) in 20mm size PVC rigid conduit 'FR' (Precision make), with 1x22/0.3 (1.5 sqmm) single core stranded 'FR' PVC insulated & unsheathed copper wire for ECC, to light/fan/call bell points with Piano Key type switch fixed on MS CRC sheet metal (16 SWG) switch board cum JB on wall complete with 2 no. suitable size "Ph & N" copper bar incl. bakelite/Perspex (wall matching color) top cover 3 mm thick and incl. 175mmx100mmx65mm inspection box, making earthing attachment, painting the MS box and mending good the damages to original finish. [PWD Schedule Page No-E-14 Item No-2a]	Point	12	703.80	8445.60
	Average run 5 mtr				
2	Distribution wiring in 1.1 KV grade 22/0.3 (1.5 sqmm) single core stranded 'FR' PVC insulated & unsheathed copper wire (Brand approved by EIC) in 20mm size PVC rigid conduit 'FR' (Precision make), with 1.1 KV grade 1 x 22/0.3 (1.5 sqmm) single core stranded 'FR' PVC insulated & unsheathed copper wire as ECC, to 5A 3 pin flush type plug socket & Piano Key type switch fixed on MS CRC sheet metal (16 SWG) switch board cum JB on wall incl. bakelite/Perspex (wall matching color) top cover 3 mm thick and incl. painting the MS box and mending good the damages to original finish On Board (only for pay counter) [PWD Schedule Page No-E-15; I-4a]	Point	2	77.05	154.10
3	Supplying and fixing 240V 32A Double Pole AC Type 30mA RCCB.(Complete Set) (ISI marked) [Make- Legrand] (Cat No 4113/95) [Legrand Page No-92]	Nos	1	5942.00	5942.00
4	Distribution wiring in 1.1 KV single core stranded 'FR' PVC insulated & unsheathed copper wire (Brand approved by EIC) in 20mm size PVC rigid conduit 'FR' (Precision make) incl. necy. fittings as required 2 x 36/0.3 (2.5 sqmm) + 1 x 22/0.3 (1.5 sqmm) ECC [PWD Schedule Page No-E-14 Item No-1a(ii)]	mtr	12	136.85	1642.20

5	<p>Supplying and fixing double-door SPN MCB Distribution Board with IP-42/43 protection, concealed in wall after cutting the wall & mending good the damages to original finish incl. Inter connection with suitable size of copper wire and neutral link & provision for earthing attachment.</p> <p>a) For (2+4 way) (Make -Havells) [PWD Schedule Page No-D-9;Iteam No-13]</p>	No	1	1233.95 1075.25	1233.95 1075.25
6	<p>Supplying and fixing 240/415 V MCB of Breaking capacity 10kA & C characteristics on din rail of existing DBs and necessary connection 6-32A SP MCB (Make -Havells) [PWD Schedule Page No-D-6;Iteam No-7]</p>	Nos	4	193.20	772.80
7	<p>Supplying and fixing 240/415 V MCB Isolator on din rail of existing DBs and necessary connection. 40A DP MCB Isolator (Make -Havells) [PWD Schedule Page No-D-5;Iteam No-6]</p>	Nos	1	239.20	239.20
8	<p>Supply of TMC501 conventional industrial batten (Philips make) LED Tube,model no- TMC501 P1xT-LED 22W P3241 (WB I & WD schedule P-113, I- 5:3 F.22)</p>	Nos	3	464.53	1393.59
9	<p>Fixing only single/twin flurosent light fitting complete with all accessories directly on wall/ceiling by screws etc.. [PWD Schedule Page No-C-2;Iteam No-14a]</p>	Nos	3	98.90	296.70
10	<p>Supply & fixing Bulk head light fittings with die cast aluminium housing frosted/clear glass on wall/ceiling incl S/F 9 watt LED Lamp complete set. [Make - Havells] (PWD sch - Page--D-13, I-23)</p>	Nos	3	740.85	2222.55
11	<p>Supply & fixing smart bright street light complete with all accessories to be fixed from the wall of building or on pole incl. making holes /providing clamping arrangement & necy. GI reducer as required.S&F 40 mm GI Pipe 1.5 mtr average length & s&f necy length of 1.5 sqmm pvc insulated single core copper wire & making connections as required & mending good damages incl wall paingting. (30 Watt) (Make - Bajaj) [WB I&WD sch P-111, I-f.9.0.2]</p>	Nos	1	3106.48	3106.48

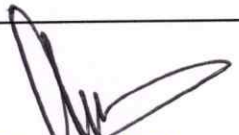
12	Supply of 9" domestic metal exhaust fan 9" (225mm)SWEEP. TRANS AIR - (Make-Crompton/Havells/Bajaj) (UD & MA schedule P-14, I-5))	Nos	3	2093.00	6279.00
13	Fixing only exhaust fan after making hole in wall and making good damages and smooth cement finish etc. as practicable as possible and providing necy. length of PVC insulated wire and making connection for exhaust of following diameter: 22.5 cm (9") [PWD Schedule Page No-C-4;Item No-28(b)]	Nos	3	378.35 284.05	1135.05 852.15
14	Fixing only louver shutter/cowl on wall with necy. bolts & nuts (6 mm dia x 62 mm long) For 22.5 cm(9") Exhaust fan [PWD Schedule Page No-C-4;Item No-30(b)]	Nos	3	126.50 94.30	379.50 282.90
15	Supply of 240V A.C Ceiling Fan (48" sweep,1200 mm complete) [Make-Crompton [for counter only] (UD & MA schedule P- 23, I- 70)	Each	1	2283.00 901.60	2283.00 901.60
16	Fixing only Ceiling Fan [PWD sch P- C-3, I-21(a)]	Each	1	2283.00 75.90	2283.00 75.90
17	Supply & Fixing 240 V, 16/20 A Piano key type switch (Brand approved by EIC) on sheet metal switch board incl. S & F 100x100x65mm MS (16SWG) switch board and bakelite/perspex top cover of 3mm thick by Brass screws after making housing for switch by cutting bakelite/perspex cover and making necessary connections as required. (For Hand Dryer machine) [PWD sch P- E-6, I-17(b)]	Each	2	75.90 231.15	451.80 462.30
18	S/F 240V 25A Modular type starter (brand approved by EIC)with 25 A. Modular switch DP MCB (C-Curve)and 4 Module G.I. Moduar type switch board with 4 Module Top Cover Plate flushed in wall incl. S/F switch board and Cover Plate and making necy. Connections with PVC Copper wire and earth connectivity wire etc. as per schedule [for Pump] [PWD Schedule Page No-E-19, Item No-17] (Please follow in details)	Nos	1	901.60 231.15	901.60 231.15

19	Supply and Fixing of 2 mm Polyvinyl glow sign board made of 22 SWG GI sheet box with 1"X1" aluminum channel for fixing the vinyl board after necessary cutting the letter as required & s/f LED tube light fittings along with all accessories. (16 sqft @495.00/sqft) (UD & MA schedule P-14, I-4)	Nos	1	7920.00	7920.00
20	Earthing installation by GI earth Spike (1830 X 20 mm) including 8SWG GI EarthWire & GI nuts, bolts, washer etc.	Nos	1	450.00	450.00
Total					45180.27
Add 18% GST					8132.45
Total With GST (A)					53312.72
Cess@1%					533.13
total					53845.85
Contingency Amount on "A"					1599.38
(Total+GST)=Rs:					55445.23
Say Rs.					55445.00

44797.32
8063.51
52860.83
528.60
53389.43
1585.82
54975.25

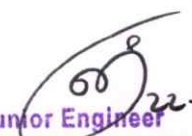
Service Connection Charges as per Quotation

Say RS. 54,975.00


Chairperson
Board of Administrators
Mirik Notified Area Authority


Sub-Assistant Engineer
Mirik Notified Area Authority

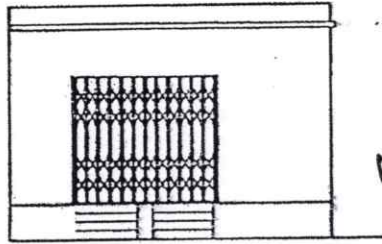
Technically Vetted Rs. 54,975.00
(Rupees fifty four thousand nine hundred and seventy five only.)


Junior Engineer
Electrical & Mechanical Division
SUDA

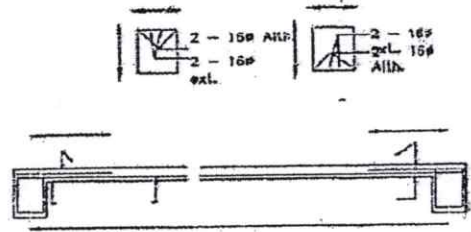

ASSISTANT ENGINEER
ELECTRICAL & MECHANICAL DIVISION
SUDA


Executive Engineer (E/M)
O/O the Secretary M.E. Dte.
Government of West Bengal

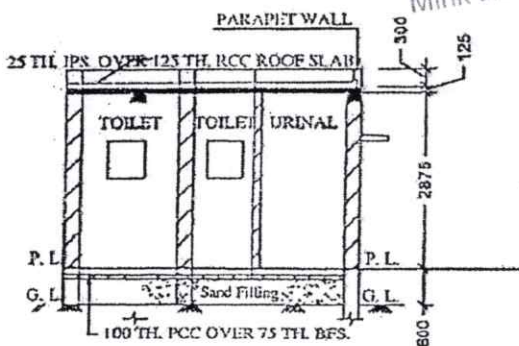
MODEL DRAWING FOR CONSTRUCTION OF C. T./P.T.
TOILET SEATS 2 NOS URINAL 3 NOS
MODEL NO.- F



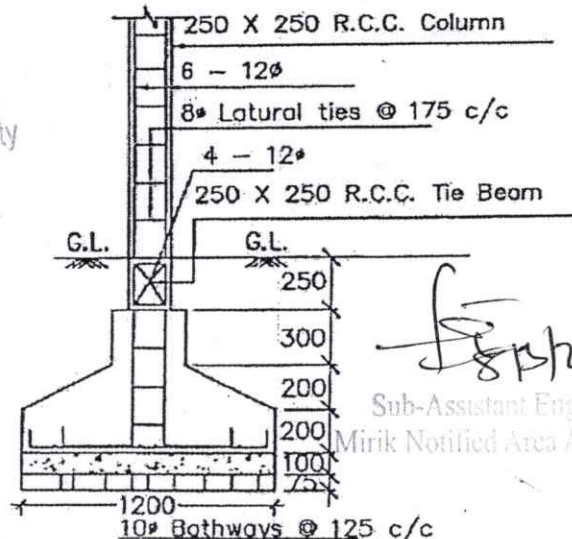
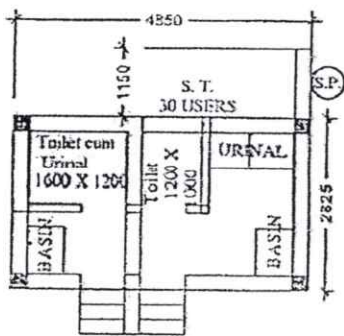
FRONT ELEVATION



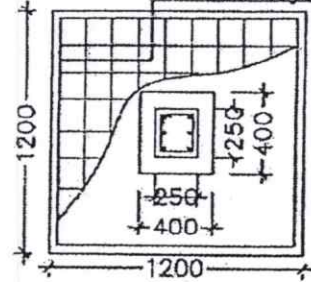
Details Of R.C.C Roof Slab & Beam
(SCALE - 1 : 25)



SECTION - 'A - A'



DETAILS OF R. C. C COLUMN
(SCALE - 1 : 25)



Person
Board of Administrators
Mirik Notified Area Authority

[Signature]
Sub-Assistant Engineer
Mirik Notified Area Authority

Checked & Verified
[Signature]
Engineer (Civil)
Mirik INSPIRATION



- BULK HEAD LIGHT → 03
- TUBE LIGHT → 03
- EXHAUST FAN → 03
- OUTDOOR LIGHT → 01
- CEILING FAN → 01
- GLOW SIGN BOARD → 01

12 p/s