

**Construction of public Toilet near Dutta Bazar in ward no-10 within Ranaghat
Municipality (Model no-G) under SBM-U 2.00 Scheme.**

SL. NO	Item Description & Item No.	Quantity	Rate	Unit	Amount
1	Earth work in excavation of foundation trenches or drains, in all sorts of soil (including mixed soil but excluding laterite or sandstone) including removing, spreading or stacking the spoils within a lead of 75 m. as directed. The item includes necessary trimming the sides of trenches, levelling, dressing and ramming the bottom, bailing out water as required complete. (a) Depth of excavation not exceeding 1,500 mm. PWD Building Works schedule Page - 1, Item -2.a	11.370	11927.00	%Cu.m	1356.10
2	Earth work in filling in foundation trenches or plinth with good earth, in layers not exceeding 150 mm. including watering and ramming etc. layer by layer complete. (Payment to be made on the basis of measurement of finished quantity of work). (a) With earth obtained from excavation of foundation. PWD Building Works schedule, Page - 1, Item -3.a	7.58	7754.00	%Cum	587.75
3	(A) Filling in foundation or plinth by silver sand in layers not exceeding 150 mm as directed and consolidating the same by thorough saturation with water, ramming complete including the cost of supply of sand. (payment to be made on measurement of finished quantity) PWD Building Works schedule, Page - 2, Item -4.a	8.890	65571.00	%Cum	5829.26
4	Single Brick Flat Soling of picked jhama bricks including ramming and dressing bed to proper level and filling joints with local sand. PWD Building Works schedule, Page- 14, Item - 1 (Corri. Page-01, Date-04-06-2018)	33.35	327.00	Sqm	10905.45
5	Cement concrete with graded stone ballast (40 mm size excluding shuttering) (A) [Pakur Variety] In ground floor (a) 1:3:6 proportion Page- 34, Item - 22(a)	3.350	4810.52	m3	16115.24
6	Ordinary Cement concrete (mix 1:1.5:3) with graded stone chips (20 mm nominal size) excluding shuttering and reinforcement,if any, in ground floor as per relevant IS codes. a) Pakur Variety /Chandil Variety PWD Building Works schedule, p-26 Item 10 a (Rate Analysis)	11.24	5784.68	Cum	65019.80
7	25mm. thick damp proof course with cement concrete with stone chips (1:1.5:3) [with graded stone aggregate 10 mm nominal size] and admixture of water proofing compound as per manufacturer's specification followed by two coat of polymer based paint, (1st coat after 4 to 5 days of concrete laying and 2 nd coat just before brick masonry work) as directed (cost of water proofing compound & polymer based paint to be paid separately).(Chequering not required over concrete or painted surface). [Note: - Waterproofing as per item 9, polymer based paint as per item 8 (a) of subhead C of Section (C). PWD Building Works schedule, Page -47, Item -1	6.30	185.16	Sqm	1166.51

Co Rs= 100980.12

SL. NO	Item Description & Item No.	Quantity	Rate	Unit	Amount
B/F Rs= 105865.14					
8	125 mm brick work with 1st class bricks in cement mortar (1:4) in ground floor. PWD Building Works schedule, Page -16, Item-16, corri page -3, date - 04.06.2018	18.34	671.53	Sq.M.	12315.86
9	Supplying and laying polythine sheet (150 gm/sq.m) over damp proof course or below flooring or roof terracing or foundation or foundation trenches. Building Works schedule, Page -47, Item-3	23.21	24.00	Sq.M.	557.04
10	Hire and labour charges for shuttering with centering and necessary staging upto 4 m using approved stout props and thick hard wood planks of approved thickness with required bracing for concrete slabs, beams and columns, lintels curved or straight including fitting, fixing and striking out after completion of works (upto roof of ground floor) (f) 25 mm to 30 mm shuttering without staging in foundation PWD Building Works schedule, Page -42, Item- 36.f	31.72	205.00	Sqm	6502.60
11	Hire and labour charges for shuttering with centering and necessary staging upto 4 m using approved stout props and thick hard wood planks of approved thickness with required bracing for concrete slabs, beams and columns, lintels curved or straight including fitting, fixing and striking out after completion of works (upto roof of ground floor) (a) 25 mm to 30 mm thick wooden shuttering as per decision & direction of Engineer-In-Charge. PWD Building Works schedule, Page -42, Item- 36 a	65.02	330.00	Sqm	21456.60
12	Artificial stone in floor, dado, staircase etc with cement mortar (1:2:4) with stone chips laid in panels as directed with topping made with ordinary or white cement (as necessary) and marble dust in proportion (1:2) including smooth finishing and rounding off corners including raking out joints or roughening of concrete surface and application of cement slurry before flooring works using cement @ 1.75 kg/sq.m all complete including all materials and labour. In ground floor mm thick topping using gray cement (ii) 25 mm PWD Building Works schedule, p-48 Item 6(ii)	23.21	257.01	Sq.m	5965.20
13	Reinforcement for reinforced concrete work in all sorts of structures including distribution bars, stirrups, binders etc initial straightening and removal of loose rust (if necessary), cutting to requisite length, hooking and bending to correct shape, placing in proper position and binding with 16 gauge black annealed wire at every intersection, complete as per drawing and direction. (a) For works in foundation and upto roof of ground floor/upto 4 m. (i) Tor steel/Mild Steel, JSPL/SWAYN/ELETRO/STEEL PWD Building Works schedule, Page - 43, Item - 40.a.i.i(Corri. 10th Page 01, Date 23 01 2020) (Rate Analysis) Item no ,	1.059	54882.59	M.T.	58120.66

Co Rs= 210783.10

SL. NO	Item Description & Item No.	Quantity	Rate	Unit	Amount
B/F Rs= 210783.10					
14	Collapsible gate with 40 mm x 10 mm x 6 mm Tee as top and bottom guide rail , 20 mm x 10 mm x 2 mm vertical channels 100 mm apart in full stretched position 20m x 5 mm MS flats as collapsible bracings properly reveted and washed including 38 mm steel roller including locking arrangements , fitted and fixed in position with lugs set in cement concrete including cutting necessary hicks chasing etc in walls , floors etc and making good all damages . PWD Building Works schedule, Page -106, Item- .18	4.20	4330.00	Sqm	18186.00
15	Brick work with 1st class bricks in cement mortar (1:6) (a) Foundation and plinth ground floor PWD Building Works schedule, Page -15, Item-7.a	4.360	4907.05	Cu.m	21394.74
16	Brick work with 1st class bricks in cement mortar (1:6) (b) superstructure ground floor PWD Building Works schedule, Page -15, Item-7.b	11.92	5129.05	Cu.m	61138.28
17	Labour for Chipping of concrete surface before taking up Plastering work. PWD Building Works schedule, P-192, It-1	66.77	21.00	Sqm	1402.17
18	Plaster (to wall, floor, ceiling etc.) with sand and cement mortar including rounding off or chamfering corners as directed and raking out joints including throating, nosing and drip course, scaffolding/staging where necessary (Ground floor).[Excluding cost of chipping over concrete surface] (i) With 1:6 cement mortar (c) 15 mm thick plaster PWD Building Works schedule, P-189 It- No. 1	115.33	141.55	Sqm	16324.96
19	Plaster (to wall, floor, ceiling etc.) with sand and cement mortar including rounding off or chamfering corners as directed and raking out joints including throating, nosing and drip course, scaffolding/staging where necessary (Ground floor).[Excluding cost of chipping over concrete surface] (ii) With 1:4 cement mortar (c) 10 mm thick plaster PWD Building Works schedule, P-189 It- No. 1 (ii)(c)	19.53	125.55	Sqm	2451.99
20	Neat cement punning about 1.5 mm thick in wall ,dado, window sills, floors etc . Note cement 0.152 m3/100 m2	11.58	32.76	Sq.m	379.36
21	Supplying, fitting and fixing fibre reinforced polymer (FRP) Composite door frame as per approved section with glass fibre reinforced plastic moulded skins and a special sandwich core, so as to impart monolitaheic composite structure as per approved technology of Department of Science and Technology (DST) to satisfy IS: 4020 door testing performance criteria.. (i) 66mm x 90mm PWD Building Works schedule, P-115, It - 3 (i)	19.80	497.00	Mtr	9840.60
22	Supplying, fitting & fixing fibre reinforced polymer (FRP) Composite door shutters as per approved design with glass fibre reinforced plastic moulded skins and a special sandwich core, so as to impart monolitaheic composite structure as per approved technology of Department of Science and Technology (DST) to satisfy IS:4020 door testing performance criteria. In ground floor. ii) 25 mm thick P-125, It- 14(ii)	5.03	2581.00	Sqm	12982.43

Co Rs= 354883.63

Sl. NO	Item Description & Item No.	Quantity	Rate	Unit	Amount
B/F Rs= 354883.63					
23	Anodised aluminium barrel / tower / socket bolt (full covered) of approved manufactured from extruded section conforming to I.S. 204/74 fitted and fixed with cadmium plated screws (viii) 225mm long x 10mm dia. bolt. PWD Building Works schedule, P-144, It No. 26 (vii)	5.00	84.00	Each	420.00
24	Iron butt hinges of approved quality fitted and fixed with steel screws, with ISI mark. (viii) 100mm X 75mm X 3.50mm. PWD Building Works schedule, P-140, It No. -5 (viii)	15.00	66.00	Each	990.00
25	Anodised aluminium decorative handle (hexagonal / fluted) of approved quality fitted and fixed complete. (i) 150mm plate x 10mm dia rod x 12mm hexagonal/fluted. PWD Building Works schedule, Page -146 . Item no-31,(i)	10.00	87.00	Each	870.00
26	Iron hasp bolt of approved quality fitted and fixed complete (oxidised) with 16mm dia rod with concrete bolt and round fitting. .b)250mm long. PWD Building Works schedule, Page -141 . Item no-10 b)	5.00	159.00	Each	795.00
27	Supplying & laying 20 mm designer chequered tiles of any shade and of approved quality as per IS. 1237. 1960 laid in patterns as directed in pavement, footpath including necessary underlay 25 mm thick average cement mortar (1:3) complete in all respect with all labour and materials .(Page -74 . Item no-47)	3.49	825.00	sq.m	2879.25
28	Rendering the Surface of walls and ceiling with White Cement base WATER PROOF wall putty of approved make & brand.(1.5 mm thick) In Ground Floor PWD Building Works schedule, PWD, P- 198, I - 5	123.28	122.00	Sqm	15040.16
29	Applying interior grade Acrylic Primer of approved quality and brand on plastered and concrete surface old or new surface to receive Distemper Acrylic emulsion paint including scraping and preparing the surface thoroughly , complete as per manufacturer's specification and as per direction of the E-I-C (Ground Floor) (b) two Coats PWD Building Works schedule, Page -74 , Item no- 46(i) .	51.08	4420.00	%m2	2257.74
30	Dry Destempering interial walls or ceiling including cleaning, washing, smoothening surface (b) two coats PWD Building Works schedule, Page 196 , item no 9(b) .	51.08	49.00	m2	2502.92
31	Applying exterior grade Acrylic Primer of approved quality and brand on plastered or concrete surface old or new surface to receive Decorative Textured (Martt Finish) or Smooth Finish Acrylic exterior emulsion paint including scraping and preparing the surface thoroughly , complete as per manufacturer's specification and as per direction of the EIC in Ground Floor (b) two coats. PWD Building Works schedule, Page -196 , Item no- 8(b) 79.69+18.00 +36.00 = 136.69 m2	77.96	45.10	m2	3516.00

Co Rs= 384154.69

SL. NO	Item Description & Item No.	Quantity	Rate	Unit	Amount
					B/F Rs= 384154.69
32	Protective and Decorative Acrylic Exterior emulsion paint of approved quality, as per manufacturer's specification and as per direction of EIC to be applied over Acrylic primer as required. The rate includes cost of materials, labour, scaffolding and all incidental charges but excluding the cost of primer in ground floor (two coats)(a) normal acrylic emulsion. PWD Building Works schedule, Page -197, Item no- 17(a)	77.96	67.00	m2	5223.32
33	(b) Priming one coat on timber or plastered surface with synthetic oil bound primer of approved quality including smoothening surfaces by sand papering etc. PWD Building Works schedule, Page -200 . Item no- 1 (b)	6.35	38.00	Sqm	241.30
34	(A) Painting with best quality synthetic enamel paint of approved make and brand including smoothening surface by sand papering etc. including using of approved putty etc. on the surface, if necessary : Page - 200 . Item no- 1 (b) (a) On timber or plastered surface : With super gloss (hi-gloss) - (iv) Two coats (with any shade except white) PWD Building Works schedule, Page -200 . Item no- 2(A)(a)(iv)	6.35	81.00	Sqm	514.35
35	(a) M.S.or W.I. Ornamental grill of approved design joints continuously welded with M.S, W.I. Flats and bars of windows, railing etc. fitted and fixed with necessary screws and lugs in ground floor.. (i) Grill weighing above 10 Kg./sq.mtr and up to 16 Kg./sq. mtr. PWD Building Works schedule, P-104 Item-13 A (i) (3rd Corrigendam Page No 91)	0.520	9888.00	Qntl	5141.76
36	a) Priming one coat on steel or other metal surface with synthetic oil bound primer of approved quality including smoothening surfaces by sand papering etc. PWD Building Works schedule, P/200 Item-1(a)	3.24	29.00	Sqm	93.96
37	(A) Painting with best quality synthetic enamel paint of approved make and brand including smoothening surface by sand papering etc. including using of approved putty etc. on the surface, if necessary : (b) On steel or other metal surface : (iv) Two coats (with any shade except white) PWD Building Works schedule, P-200 Item-2(b)(iv)	3.24	79.00	Sqm	255.96

Co Rs= 395625.34

SL. NO	Item Description & Item No.	Quantity	Rate	Unit	Amount
B/F Rs=					395625.34
38	<p>Supplying and laying true to line and level vitrified tiles of approved brand (size not less than 600 mm X 600 mm X 10 mm thick) in floor, skirting etc. set in 20 mm sand cement mortar (1:4) and 2 mm thick cement slurry back side of tiles using cement @ 2.91Kg./sqM or using polymerised adhesive (6 mm thick layer applied directly over finished artificial stone floor/Mosaic etc without any backing course) laid after application slurry using 1.75 Kg of cement per sqM below mortar only, joints grouted with admixture of white cement and colouring Pigment to match with colour of tiles / epoxy grout materials of approved make as directed and removal of wax coating of top surface of tiles with warm water and polishing the tiles using soft and dry cloth upto mirror finish complete including the cost of materials, labour and all other incidental charges complete true to the manufacturer's specification and direction of Engineer-in-Charge. (White cement, synthetic adhesive and grout material to be supplied by the contrr[e])</p> <p>I (I) With application slurry @1.75 kg/ Sq.m, 20 mm sand cement mortar (1:4) & 2 mm thick cement slurry at back side of tiles, 0.2 kg/ Sq.m white cement for joint filling with pigment.</p> <p>(A) Deep Colour & White</p> <p>PWD Building Works schedule, Page-66 Item-36 (A) (3rd Floor</p>	35.24	1704.00	Sqm	60048.96
39	<p>Supplying, fitting & fixing 1st quality Ceramic tiles in walls and floors to match with the existing work & 4 nos. of key stones (10mm) fixed with araldite at the back of each tile & finishing the joints with white cement mixed with colouring oxide if required to match the colour of tiles including roughening of concrete surface, if necessary or by synthetic adhesive & grout materials etc.</p> <p>B) Wall b)</p> <p>Area of each tile above 0.09 Sq.m ii)</p> <p>Other than Coloured decorative including white</p> <p>PWD Building Works schedule, page-64, Item:35.(B.) (b).(ii) (3rd Corrigendam ,Page 36)</p>	85.17	1047.00	Sqm	89172.99
40	<p>Supplying profiles of required section made of Aluminium Alloy Extrusions conforming to IS: 732-1983 and IS: 1285- 1975; Anodized (with required film thickness and specified colour / natural) matt finished conforming to IS: 1868-1983 for fabrication of composit door, sliding & casement windows, partitions, formed of basic sections of any ISI embossed / certified make and brand as per direction of Engineer - In- Charge. (Payment will be made on finished length of the work).</p> <p>(A) In 10-12 Micron thickness Anodizing film</p> <p>I) Natural white h) Louvered window. i) Top, bottom and side member.</p> <p>PWD Building Works schedule, PWD, P-233, I- 1(h) i</p>	8.40	183.00	M	1537.20
41	ii) Louvered Section.	4.80	658.00	M	3158.40
42	iii) Cleat angle (Non-anodized).	6.40	263.00	M	1683.20

Co Rs= 551226.09

SL. NO	Item Description & Item No.	Quantity	Rate	Unit	Amount
					B/F Rs= 551226.09
43	Labour charge for fabrication and installation of composite door, window, partitions made from anodized extruded alloy aluminium sections for the following units:- (A) Glazed aluminium sliding windows made of extruded and anodized alloy aluminium sections, fabrications, including cutting to proper shape and size, drilling and aligning of window shutter frame fitted with in built locking arrangements, sliding rollers and other necessary fittings, fixture, adhesives and joineries along with extruded neoprene or EPDM gasketing in between window frame and masonry work (walls, column, beam,lintels etc.) as well as between glass and shutter frame for fixing glass and Polysulphide sealant and in between shutter and window frame where necessary including cutting to requisite size and fixing glass as per drawing, specification and direction of EIC. The rate includes the hire charge of all tools and plants, including all incidental charges, adhesive, joineries such as screw, cleat angle etc. but excluding the cost of extruded aluminium sections, glass, neoprene / EPDM gasket, locking arrangement and rollers. v) Louvered window. PWD Building Works schedule SOR, PWD, P-239, I- 2 (v)	1.08	730.00	Sq.M.	788.40
44	Supplying bubble free float glass of approved make and brand conforming to IS: 2835-1987. iv) 5mm thick coloured / tinted / smoke glass. PWD Building Works schedule, P-243, I-9	1.06	585.00	Each	631.80
45	Painting block letters or digits in Black Japan or any approved paint as per direction. e) Size above 7.5 cm. and upto 10 cm. PWD Building Works schedule, P-268, It-17(e)	450.00	12.00	Each	5400.00
46	Supplying and Planting of different plant / trees (Supplying well grown plants bushy and healthy, minimum height as specified i.e. exposed height including all leads & lift, carriage, handling, manuring, applying pesticide and fertilizer etc. . i) Furcaria veriegated 10-12 leaves in height 20-30cm in earthen pots of size 25cm. PWD Building Works schedule, Page -261, It- 9 (i)	10.00	162.00	Each	1620.00
47	x) Ficus blakii (F. Vivicon) well branched (Bushy) of height 120cm - 135 cm in earthen pot of size 30cm. PWD Building Works schedule, Page -261, It- 9 (x)	3.00	187.00	Each	561.00
48	xxvi) Areca Palm 4 - 5 suckers of height 90 cm to 105 cm in earthen pots of size 25 cm. PWD Building Works schedule, Page -261, It- 9 (xxvi)	3.00	127.00	Each	381.00
49	SANITARY AND PLUMBING WORKS				0.00
50	Supplying, fitting and fixing Anglo-Indian W.C. in white glazed vitreous china ware of approved make complete in position with necessary bolts, nuts etc. a) With 'P' trap (with vent) PWD S&P Schedule, page-79, item no -3 (a)	4.00	3104.00	Each	12416.00

Co Rs= 573024.29

SL. NO	Item Description & Item No.	Quantity	Rate	Unit	Amount
B/F Rs= 573024.29					
51	Supplying, fitting and fixing Closet seat of approved make with lid and C.P. hinges, rubber buffer and brass screws complete. (b) Anglo Indian (i) Plastic (hallow type) White PWD S&P Schedule, page-81,item no 10.b.i	4.00	380.00	Each	1520.00
52	Supplying, fitting and fixing Flat back urinal (half stall urinal) in white vitreous chinaware of approved make in position with brass screws on 75 mm X 75 mm X 75 mm wooden blocks complete (ii) 470 mm X 280 mm X 340 mm PWD S&P Schedule, page.80,item no-6/(ii)	3.00	945.00	Each	2835.00
53	Supplying fitting and fixing squatting plate with integrated flushing in white vitreous set in cement concrete (6:3:1) with jhama chips complete. (Payment of concrete will be paid seperately) (I) 450 mm x 350 mm	2.00	881.00	each	1762.00
54	Supplying, fitting and fixing 10 litre P.V.C. low-down cistern conforming to I.S. specification with P.V.C. fittings complete,C.I. brackets including two coats of painting to bracket etc. PWD S&P Schedule, Page No.-36 Item No.-2,	4.00	1015.00	Nos	4060.00
55	Supplying,fitting and fixing 32 mm dia. Flush Pipe of approved make with necessary fixing materials and clamps complete. i) Polythene Flush Pipe PWD S&P Schedule, Page no 81. Item no. 11(i)	4.00	155.00	Each	620.00
56	Supplying, fitting and fixing urinal flush pipe fittings of approved brand. (a) C.P. urinal flush pipe fittings range of one PWD S&P Schedule, S.P.81,item-12/a	2.00	414.00	Each	828.00
57	Supplying, fitting and fixing white vitreous china best quality approved make wash basin with C.I. brackets on 75 mm X 75 mm wooden blocks, C P waste fittings of 32 mm dia , mending good all damages and painting the brackets with two coats of approved paint. (ii) 550 mm X 400 mm size PWD S&P Schedule, P-41, It 2 (ii)	2.00	2208.00	Each	4416.00
58	Supplying fitting and fixing pedestal of approved make for wash basin (White) PWD S&P Schedule, P-41, It 3	2.00	1497.00	Each	2994.00
59	Supplying,fitting and fixing approved brand P.V.C. CONNECTOR white flexible, with both ends coupling with heavy brass C.P. nut, 15 mm dia., (iii) 600 mm long PWD S&P Schedule, Page No.-43 Item No.-9-iii PWD,	5.00	107.00	Each	535.00
60	Supplying,fitting and fixing approved brand 32 mm dia.P.V.C. waste pipe, with PVC coupling at one end fitted with necessary clamps. (iv) 1050 mm long each PWD S&P Schedule, Page No.-43 Item No. 10-iv	2.00	91.00	Each	182.00
61	(f) Hand Shower(health faucet) with 1mtr flexible tube with wall Hook(Equivalent to Code No.573 & Model -ALLIED of Jaquar or similar). PWD S&P Schedule, Page No.-3 Item No.- 3 f,	5.00	1251.00	Each	6255.00

Co Rs= 599031.29

SL. NO	Item Description & Item No.	Quantity	Rate	Unit	Amount
B/F Rs= 599031.29					
62	(a) (i) Chromium plated Bib Cock short body (Equivalent to Code No. 511 & Model - Tropical / Sumthing Special of ESSCO or similar brand). PWD S&P Schedule, Page No.-6 Item No.-7-a-i	7.00	539.00	Each	3773.00
63	(b) (i) Chromium plated Stop Cock (Equivalent to Code No. 513(A) & 513(B) & Model - Tropical / Sumthing Special of ESSCO or similar PWD S&P Schedule, Page No.-6 Item No.-7-b-i	5.00	493.00	Each	2465.00
64	Chromium plated angular Stop Cock with wall flange (Equivalent to Code No. 5053 & Model - Florentine of Jaquar or similar brand). PWD S&P Schedule, Page No.-6 Item No.-7-d-i,	5.00	815.00	Each	4075.00
65	Supplying, fitting and fixing pillar cock of approved make. a) (i) CP Pillar Cock - 15 mm. (Equivalent to Code No. 507 & Model - Tropical / Sumthing Special of ESSCO or similar brand). (P. No. - 45, Item. No. - 19(a)i, Pwd Sanitary Plumbing Schedule 2017)	2.00	555.00	Each	1110.00
66	Supplying, fitting and fixing PVC pipes of approved make of Schedule 80 (medium duty) conforming to ASIMD - 1/85 and threaded to match with GI Pipes as per IS : 1239 (Part - I). with all necessary accessories, specials viz. socket, bend, tee, union, cross, elbo, nipple, longscrow, reducing socket, reducing tee, short piece etc. fitted with holder bats clamps, including cutting pipes, making threads,fitting, fixing etc. complete in all respect including cost of all necessary fittings as required,jointing materials and two coats of painting with approved paint in any position above ground. (Payment will be made on the centre line measurements of total pipe line including all specials. No separate payment will be made for accesories, specials. Payment for painting will be made seperately) (a) For Exposed Work PVC Pipes, 25 mm Page No.-12 Item No.-19-i(a), PWD,VOL-II , 2017-18	25.00	177.00	Mtr	4425.00
67	(a) (a) For Exposed Work PVC Pipes, 15 mm Page No.-12 Item No.-19-i(a), PWD,VOL-II , 2017-18	10.00	101.00	Mtr	1010.00
68	(b) For Concealed Work PVC Pipes, 15 mm Page No.-12 Item No.-19-i(b), PWD,VOL-II , 2017-18	10.00	137.00	Mtr	1370.00
69	Supplying and fitting fixing of gunmetal wheel valve of approved brand and make tested to 21 Kg per sq. cm. 25 mm dia(E5) PWD S&P Schedule, P-5 It-5,vii),	2.00	778.00	Each	1556.00
70	Supplying P.V.C. water storage tank of approved quality with closed top with lid (Black) - Multilayer (b) 1000 litre capacity PWD S&P Schedule, page.37,item no-6 (b)	2.00	5128.00	Each	10256.00
71	Labour for hoisting plastic water storage tank. (i) Upto 1500 litre capacity. (a) Upto 1st story from G.L. PWD S&P Schedule, page.37,item no-10 (i)(a)	2.00	96.00	Each	192.00

Co Rs= 629263.29

Sl. NO	Item Description & Item No.	Quantity	Rate	Unit	Amount
B/F Rs= 629263.29					
72	Labour for punching hole in plastic water storage tank upto 50 mm dia. PWD S&P Schedule, (P. No. - 38, Item No. - 13)	4.00	19.00	Each	76.00
73	Supply of UPVC pipes (B Type) & fittings conforming to IS-13592-1992.(A) (i) Single Socketed 3 Meter Length, (b) 110 mm PWD S&P Schedule, Page No.-68 Item No. 23,(A)(i)(b)	30.00	292.00	Mtr	8760.00
74	(B) Fittings (i) Coupler, (b) 110 mm	8.00	85.00	Each	680.00
75	(ii) Plain Tee, (b) 110 mm	12.00	85.00	Each	1020.00
76	(iii) Door Tee, (b) 110 mm	10.00	195.00	Each	1950.00
77	ix) Bend 45°, (b) 110 mm	10.00	89.00	Each	890.00
78	xi) Door Bend (T.S.), (b) 110 mm	7.00	147.00	Each	1029.00
79	xvi) Pipe Clip, (b) 110 mm	30.00	21.00	Each	630.00
80	xvii) W.C. Connector (150 mm long) 125 X 110(W/WC Ring) 75 mm	4.00	142.00	Each	568.00
81	xxxi) Plain Floor Trap with Top tile & Strainer 75 mm	7.00	144.00	Each	1008.00
82	L) Rubber Ring, (b) 110 mm	15.00	17.00	Each	255.00
83	C)Rubber Lubricant 500 ML	1.00	187.00	500 ML	187.00
84	U)Solvent Cement 250 ML	1.00	103.00	250 ML	103.00
85	Labour for fitting and fixing U.P.V.C. pipes for above ground work including cost of jointing materials etc. fitting and fixing all necessary specials, cutting pipes, cutting holes in total pipeline including specials. (B) Under ground, (ii) 110 mm dia. PWD S&P Schedule, (P. - 74, Item. No. - 24 (B)	25.00	84.00	Mtr	2100.00
86	Supplying, fitting & fixing UPVC pipes A- Type and fittings conforming to IS:13592-1992 with all necessary clamps nails, including making holes in walls, floor etc. cutting trenches in any soil through masonry concrete structures etc if necessary and mending good damages including joining with jointing materials (Spun Yarn, Valamoid/Bitumen/M-Seal etc) complete. A) UPVC Pipes: (i) 75 mm. Dia. (P. - 212, Item. No. - 21 (A)(i) , (B),(c),(i) & (B), (d),(i), Pwd volume- i, 2017)	30.00	188.00	Mtr	5640.00
87	B) UPVC Fittings: c) Bend 87.5 degree (i) 75 mm. Dia.	6.00	84.00	Mtr	504.00
88	B) UPVC Fittings: d) Shoe (i) 75 mm. Dia.	2.00	78.00	Mtr	156.00

Co Rs= 654819.29

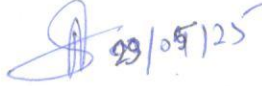
SL. NO	Item Description & Item No.	Quantity	Rate	Unit	Ammount
B/F Rs= 654819.29					
89	<p>Constructing Inspection pit of inside measurement 600mm X 600mm X upto 600mm (depth) with 250 mm thick 1st. class brick work in cement mortar (1:4) on all sides, bottom of the pit consisting of 100 mm thick cement concrete (1:3:6) with stone chips over a layer of jhama brick flat soling, 15 mm thick (1:4) cement plaster to inside walls and out-side walls upto G.L. and 20 mm.thick (1:4) plaster to bottom of the pit, providing necessary invert with cement concrete (1:3:6) with stone chips as per direction, neat cement finishing to entire internal surfaces, top of the pit covered with 100 mm thick R.C.C. slab (1:1.5:3) with stone chips and necessary reinforcements upto 1% and shuttering including 6 mm thick cement plaster (1:4) in all external surfaces of the slab and one 560 mm dia. R.C.C. manhole cover of approved make supplied, fitted and fixed in the slab with necessary fittings, necessary earthwork in excavation in all sorts of soil, filling sides of the pit with earth and removing spoils after work complete in all respect with all costs of labour and materials.</p> <p>i) With Pakur variety (Other than SAIL/TATA/RINL). PWD S&P Schedule, S.P.87,Item No-1/(i), 7th Corrigenda Volume ii</p>	3.00	7248.00	Each	21744.00
90	<p>Construction of septic tank of different capacities as per approved drawing with 1st class brick work in cement mortar (1:4) including two 560 mm dia. R.C.C. manhole cover(heavy type)of approved make supplied, fitted and fixed in the 100mm thick R.C.C (1:1.5:3) top slab with necessary fittings, 20mm thick cement piaster (4 : 1) with neat cement finish to the internal surfaces and 15 mm thick cement plaster (4 : 1) to outside wall upto 200 mm below G.L floor finished with 25 mm thick grey artificial stone over 100 mm thick R.C.C(1:1.5:3) bottom slab including supplying, fitting and fixing all nesssry specials, fittings, S.W. tees, C.I. foot rest etc. including excavation earth in all sorts of soil, shoring, bailing out and pumping out water as necessary, ramming, dressing the bed and fefilling the sides of the tanks with earth, removing spoils, filling up the chamber with clear water, removing foreign materials from the chamber and including constructing attached inspection pit as per approved drawing and connecting all necessary pipes, joints etc. with internal plaster work and artificial stone flooring is to be done with admixture of water proofing compound @ 0.5% by weight of cement with all costs of labour and materials.</p> <p>(ii) For 20 users A) With Pakur variety. (JSW/JSPL/SHYAM/SRMB/ELECTROSTEEL/SSL) PWD S&P Schedule, S.P.88,Item No-3(ii)(A) 7th Corrigenda Volume ii</p>	1.00	48162.00	Each	48162.00


SL. NO	Item Description & Item No.	Quantity	Rate	Unit	Amount
B/F Rs= 736461.27					
91	Construction of circular soak well 2.5 metre deep in all types of sandy soils with dry brick work upto 1.6 metre from the bottom having 150 mm intermediate cement brick work (1:4) band all round and cement brick work (1:4) upto 0.90 metre from top with 20mm thick cement plastering (1:4) to inside face upto the depth of cement brick work, 15mm thick cement plaster (1:4) on outer face from top of the well upto G.L. and 6 mm thick cement plaster (1:4)	1.00	16621.00	Each	16621.00
92	Supplying, fitting and fixing towel rail with two brackets. (a) C.P. over brass (ii) 25 mm dia. and 600 mm long Schedule, p No 82 I No- 22 (a)(ii) PWD S&P	2.00	430.00	Each	860.00
93	Supplying, fitting and fixing bevelled edged mirror 5.5 mm thick silver red as per I.S. 3438 / 1965 together with brass C.P. hinges. (ii) 600 mm X 450 mm PWD S&P Schedule, P-81, It-15(ii)	2.00	484.00	Each	968.00
94	Supplying, fitting and fixing soap holder. (b) Fibre glass Sanitary and plumbing work schedule P-82, It-18(b)	4.00	58.00	Each	232.00
95	Supplying, fitting and fixing glass shelf with aluminium guard rails. (a) Ordinary type with 5.5 mm sheet glass (i) 450 mm X 125 mm Sanitary and plumbing work schedule P-81, It-16(a)(i)	2.00	341.00	Each	682.00
Sub Total Rs=					739203.27
Add S.G.S.T. @			9%		66528.29
Add C.G.S.T. @			9%		66528.29
Cost Of Civil Work					872259.86
Add Labour Welfare Cess. @			1%		8722.60
Total Amount Including Labour Welfare Cess.					880982.46
Add Contengency @3%					26167.80
Total Amount Including L.W.C. and contengency					907150.26
Say Rs. Nine Lakh Seven Thousand One Hundred Fifty Only					907150



NODAL ENGINEER
SOLID WASTE MANAGEMENT
RANAGHAT MUNICIPALITY


Assistant Engineer
Ranaghat Municipality


Chairman
Ranaghat Municipality
VETILED



Junior Engineer (Civil)
Nadia Division, M.E. Dte.
Deptt. of UD & MA
Govt. of West Bengal

May be Vettered

Assistant Engineer (Civil)
Nadia Division, M.E. Dte.
Deptt. of UD & MA
Govt. of West Bengal


Executive Engineer
Nadia Division, M.E. Dte.
Deptt. of UD & MA
Govt. Of West Bengal

Tentative Item wise Non Schedule estimate for Construction of CT & PT at defarent location within Ranaghat Municipality.

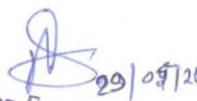
SL.NO	Item Description & Item No.	Quantity	Rate	Unit	Ammount
1	Non Shedule Item Sl. No. 91-106 (Order as per SUDA) standard plastic dustbin (12lits)	5	350	Each	1750.00
2	Air freshner(pack of 4nos)	8	216	Each	1728.00
3	Air freshner (Naphthaline 250 gm)	5	210	Each	1050.00
4	supplying paper Napkin	5	50	Each	250.00
6	Supplying Sanitary Napkin (Whisper or similar make 50 pcs)	4	520	Each	2080.00
7	Harpic (blue 500 ml)	4	300	Each	1200.00
8	Harpic (Red 500 ml)	4	150	Each	600.00
9	Gala double lip floor wiper	4	350	Each	1400.00
10	colin glass or surface cleaner	2	200	Lit	400.00
11	Muriatic Acid	2	145	Lit	290.00
12	Bleaching powder	4	120	Kg	480.00
13	Dettol ,lifeboy or similar make liquid soap	8	140	Lit	1120.00
14	Rubber hand gloves	6	80	Pair	480.00
15	Double side plastic brush	6	125	Each	750.00
16	Plastic Broom	4	170	Each	680.00
17	supplying roaster /register for keeping accoount of regular cleanig	3	200	Each	600.00
18	Signage ACP Base & reflective vinyl (1	3776	Each	3776.00
19	Supplying and fixing sinage with fixing stand post for public toilet for visible to passersby	5	1000	Each	5000.00
20	Sms / any other ICT based feedback system	1	5000	Each	5000.00
21	Glow sign board Name and contact Details of The Flowing Are displayed	1	5000	Each	5000.00
22	Mini Tulu Pump	1	4000	Each	4000.00
23	Lettar of Toilet Wall For Display of Name And Contact details of Ulb, ward Number And name of Maintanance authority, Santary inspaector, etc.	1	1000	Each	1000.00
				Rs.	38634.00
	Add for Labour welfare Cess @ 1 %			Rs.	386.34
			Total	Rs.	39020.34
	Add for Contingency @ 3 %			Rs.	1170.61
			TOTAL	Rs.	40190.95
				Say Rs	40191


Sub Assistant Engineer
Ranaghat Municipality


Assistant Engineer
Ranaghat Municipality


Assistant Engineer (Civil)
Nadia Division, M.E. Dte.
Deptt. of UD & MA
Govt. of West Bengal


Chairman
Ranaghat Municipality


Junior Engineer (Civil)
Nadia Division, M.E. Dte.
Deptt. of UD & MA
Govt. of West Bengal

Non Schedule Items that may required in preparation of CT/PT estimates

S.L.NO	Description of Items	Unit	Quantity	Rate
1	Standard plastic Dustbin (12 lits)	Each	1	350
2	Installation of Sinage	Each	1	2071
3	Air Freshner (Pack of 4 nos)	Each	1	216
4	Air Freshner (Napthaline 250 gm)	Each	1	210
5	Supplying paper Napkin	Each	1	50
6	Supplying Sanitary Napkin (Whisper or similar make 50 pcs)	Each	1	520
7	Harpic (Blue 500 ml)	Each	1	300
8	Harpic (Red 500 ml)	Each	1	150
9	Gala double lip floor wiper	Each	1	350
10	Colin glass or surface cleaner	Lit	1	200
11	Muriatic Acid	Lit	1	145
12	Bleaching Powder	kg	1	120
13	Dettol,Lifebuy or similar make liquid soap	Lit	1	140
14	Rubber hand Gloves	pair	1	80
15	Double Side plastic brush	each	1	125
16	Plastic Broom	each	1	170
17	Signage ACP Base & reflective vinyl (E8)	each	1	3776.00
18	SMS/any other ICT based feedback system (with number displayed on which SMS has to be sent) (A9)	each	1	5000.00
19	Glow sign board Name and contact details of the following are displayed prominently - Toilet identification number, name of ULB under whose jurisdiction toilet is covered, ward number and maintenance authority prominently displayed for each toilet block Supervisor, Supervisor's agency and area Sanitary Inspector (D3)	each	1	5000.00
20	Mini Tulu pump	Each	1	4000
21	Supplying and fixing sinage with fixing stand post for public toilet for visible to passersby	each	1	1000
22	Supplying roaster/register for keeping account of regular cleaning (D1)	each	1	200
23	Lettering on toilet wall for display of name and contact details of ULB, Ward number and name of maintenance authority, sanitary inspector,etc (D3)	EACH	1	1000

28/01/2025
 SU... D.A.S.
 Municipal Civil Engineer
 Ramaghat Municipality
 05/08/2022
 E.F. SUDA.

29/05/22
 Junior Engineer (Civil)
 Nadia Div.
 Deptt. of C.U.
 Govt. of West Ben.

Co. uternigand
 Chandhan
 05.02.2022

Scope of Work

(To be attached with all copies estimates)

RANAGHAT MUNICIPALITY

Name of Work: - PROBABLE ITEMWISE ELECTRICAL ESTIMATE FOR PUBLIC TOILET NEAR DUTTA BAZAR (MODEL - E) IN WARD NO. 10 WITHIN RANAGHAT MUNICIPALITY UNDER ODF+. (Aspirational Parameter).

Estimated Amount: ~~91,189.00/-~~

Name of Scheme/Fund: ODF+

87,714/-

Availability of Fund: -The fund will be available from M.A Department subject to the condition that the vetted estimate from the competent authority will have to be submitted to the Department.

Nature of work: - Original Construction and Commissioning Works.

Details of the work

1. Electrical Estimate for Public Toilet

Location- 1	PUBLIC TOILET NEAR DUTTA BAZAR IN WARD NO. 10
Specification / Cross Section:	Attached Herewith
Drawing Ref. (if any):	Attached Herewith
Detail Quantity Calculation:	Attached Herewith
Analysis of Rates:	Attached Herewith
Ward Map:	Attached Herewith
Actual Photograph:	Attached Herewith



Sub- Assistant Engineer

Ranaghat Municipality
Sub Assistant Engineer
Ranaghat Municipality

Assistant Engineer

Ranaghat Municipality



Chairman
Ranaghat Municipality
Chairman
Ranaghat Municipality

PROBABLE ITEMWISE ELECTRICAL ESTIMATE FOR PUBLIC TOILET NEAR DUTTA BAZAR (MODEL - E) IN WARD NO. 10 WITHIN RANAGHAT MUNICIPALITY UNDER ODF+. (Aspirational Parameter).

{Based on P.W.D Schedule of rates for Electrical works effective from 1st November, 2017, UD & MA Schedule of rates and Irrigation & Waterways Department read with subsequent corrigenda and addenda as of date}

Sl No.	Item Description	Unit	Quantity	Rate	Amount
1	Distribution wiring in 2 x 22/0.3 (1.5 sqmm) single core stranded 'FR' PVC insulated & unsheathed copper wire (Brand approved by EIC) in 20mm size PVC rigid conduit 'FR' (Precision make), with 1x22/0.3 (1.5 sqmm) single core stranded 'FR' PVC insulated & unsheathed copper wire for ECC, to light/fan/call bell points with Piano Key type switch fixed on MS CRC sheet metal (16 SWG) switch board cum JB on wall complete with 2 no. suitable size "Ph & N" copper bar incl. bakelite/Perspex (wall matching color) top cover 3 mm thick and incl. 175mmx100mmx65mm inspection box, making earthing attachment, painting the MS box and mending good the damages to original finish. [PWD Schedule Page No-E-14 Item No-2a] DISTRICT CHARGES ADDED @ 3.00 %.	Point	25 21	₹ 630.36	₹ 15,759.00 13237.56
	Average run 5 mtr				
2	Distribution wiring in 1.1 KV grade 22/0.3 (1.5 sqmm) single core stranded 'FR' PVC insulated & unsheathed copper wire (Brand approved by EIC) in 20mm size PVC rigid conduit 'FR' (Precision make), with 1.1 KV grade 1 x 22/0.3 (1.5 sqmm) single core stranded 'FR' PVC insulated & unsheathed copper wire as ECC, to 5A 3 pin flush type plug socket & Piano Key type switch fixed on MS CRC sheet metal (16 SWG) switch board cum JB on wall incl. bakelite/Perspex (wall matching color) top cover 3 mm thick and incl. painting the MS box and mending good the damages to original finish. On Board. (only for pay counter) [PWD Schedule Page No-E-15; 1-4a] DISTRICT CHARGES ADDED @ 1.00 %.	Point	1 2	₹ 69.01	₹ 69.01 138.02
3	Supplying and fixing 240V 32A Double Pole AC Type 30mA RCCB.(Complete Set) (ISI marked) [Make- Legrand] (Cat No 4113/95) [Legrand Page No-92] NO DISTRICT CHARGES ADDED.	Nos	1	₹ 5,942.00	₹ 5,942.00
4	Distribution wiring in 1.1 KV single core stranded 'FR' PVC insulated & unsheathed copper wire (Brand approved by EIC) in 20mm size PVC rigid conduit 'FR' (Precision make) incl. necy. fittings as required. ii) 2 x 36/0.3 (2.5 sqmm) + 1 x 22/0.3 (1.5 sqmm) ECC [PWD Schedule Page No-E-14 Item No-1a(ii)] DISTRICT CHARGES ADDED @ 3.00 %.	RM	25	₹ 122.57	₹ 3,064.25
5	Supplying and fixing double-door SPN MCB Distribution Board with IP-42/43 protection, concealed in wall after cutting the wall & mending good the damages to original finish incl. Inter connection with suitable size of copper wire and neutral link & provision for earthing attachment. a) For (2+4 way) (Enclosure (607710), (Make -Legrand) [PWD Schedule Page No-D-9; Item No-13] DISTRICT CHARGES ADDED @ 3.00 %.	No	1	₹ 1,221.58	₹ 1,221.58
6	Supplying and fixing 240/415 V MCB of Breaking capacity 10kA & C characteristics on din rail of existing DBs and necessary connection 6-32A SP MCB (Make -Siemens) [PWD Schedule Page No-D-6; Item No-7] DISTRICT CHARGES ADDED @ 3.00 %.	Nos	6 4	₹ 189.52	₹ 1,137.12 758.08
7	Supplying and fixing 240/415 V MCB Isolator on din rail of existing DBs and necessary connection. 40A DP MCB Isolator. (Make -Schneider) [PWD Schedule Page No-D-5; Item No-6] DISTRICT CHARGES ADDED @ 3.00 %.	Nos	1	₹ 364.62	₹ 364.62
8	Supply of TMC501 conventional industrial batten (Phillips make) LED Tube, model no- TMC501 P1xT-LED 22W P3241 {WB 1 & WD schedule 1- 5:3 F.22 P-113} DISTRICT CHARGES ADDED @ 1.00 %.	Nos	12	₹ 455.51	₹ 5,466.12
9	Fixing only single/twin flourescent light fitting complete with all accessories directly on wall/ceiling by screws etc.. [PWD Schedule Page No-C-2; Item No-14a] DISTRICT CHARGES ADDED @ 3.00 %.	Nos	12	₹ 88.58	₹ 1,062.96

Sl No.	Item Description	Unit	Quantity	Rate	Amount
10	Supplying & Fixing bulk head light fitting (Havells make) with die cast aluminium housing & frosted glass on wall/ceiling incl. S&F 8watt CFL / 100 watts GLS lamp complete set. (PWD sch - Page--D-13, I-23) DISTRICT CHARGES ADDED @ 3.00 %. (Add: Rs. 75.00/- Extra fro 9 Watt LED lamp)	Nos	2	₹ 671.37	₹ 1,342.74
11	Supply & fixing smart bright street light complete with all accessories to be fixed from the wall of building or on pole incl. making holes /providing clamping arrangement & necy. GI reducer as required. S&F 40 mm GI Pipe 1.5 mtr average length & s&f necy length of 1.5 sqmm pvc insulated single core copper wire & making connections as required & mending good damages incl wall paingting. (30 Watt) (Make - Bajaj) [WB I&WD schedule- 1-f.9.0.2,P-111] DISTRICT CHARGES ADDED @ 1.00 %.	Nos	1	₹ 3,046.16	₹ 3,046.16
12	Supply of domestic metal exhaust fan 12" (300mm)SWEEP. TRANS AIR - (Make-Crompton/Havells/Bajaj) (UD & MA schedule P-14, I-5), NO DISTRICT CHARGES ADDED	Nos	4	₹ 2,093.00	₹ 8,372.00
13	Fixing only exhaust fan after making hole in wall and making good damages and smooth cement finish etc. as practicable as possible and providing necy. length of PVC insulated wire and making connection for exhaust of following diameter 30.0 cm (12") [PWD Schedule Page No-C-4;Item No-28(b)] DISTRICT CHARGES ADDED @ 3.00 %.	Nos	4	₹ 338.87	₹ 1,355.48
14	Fixing only louver shutter/cowl on wall with necy. bolts & nuts (6 mm dia x 62 mm long) For 22.5 cm(9") Exhaust fan. [PWD Schedule Page No-C-4;Item No-30(b)] DISTRICT CHARGES ADDED @ 3.00 %.	Nos	4	₹ 113.30	₹ 453.20
15	Supply of 240V A.C Ceiling Fan (48" sweep,1200 mm complete) [Make-Crompton] (ForPay Counter only) (UD & MA schedule P- 23, I- 70) NO DISTRICT CHARGES ADDED.	Each	1	₹ 2,283.00	₹ 2,283.00
16	Fixing only Ceiling Fan [PWD Sch P- C-3, I-21(a)] DISTRICT CHARGES ADDED @ 3.00 %.	Each	1	₹ 67.98	₹ 67.98
17	Supply & Fixing 240 V, 16/20 A Piano key type switch (Brand approved by EIC) on sheet metal switch board incl. S & F 100x100x65mm MS (16SWG) switch board and bakelite/perspex top cover of 3mm thick by Brass screws after making housing for switch by cutting bakelite/perspex cover and making necessary connections as required. (For Hand Dryer machine) [PWD Schedule P- E-6, I-17(b)] DISTRICT CHARGES ADDED @ 1.00 %.	Each	2	₹ 207.03	₹ 414.06
18	S/F 240V 25A Modular type starter (brand approved by EIC)with 25 A. Modular switch DP MCB (C-Curve)and 4 Module G.I. Modular type switch board with 4 Module Top Cover Plate flushed in wall incl. S/F switch board and Cover Plate and making necy. Connections with PVC Copper wire and earth connectivity wire etc. as per schedule (For Pump) [PWD Schedule Page No-E-19, Item No-17] DISTRICT CHARGES ADDED @ 3.00 %.	Nos	1	₹ 807.52	₹ 807.52
19	Supply and Fixing of 2 mm Polyvinyl glow sign board made of 22 SWG GI sheet box with 1"X1" aluminum channel for fixing the vinyl board after necessary cutting the letter as required & s/f LED tube light fittings along with all accessories. (16 sqft @495.00/sqft) (UD & MA schedule P-14, I-4) NO DISTRICT CHARGES ADDED.	Nos	1	₹ 7,920.00	₹ 7,920.00
20	Excavation of soil for installation of Earth Electrode and filling & ramming. (a) For Soft Soil. [PWD Electrical Schedule Page No-G-1;Item No-1(a)] DISTRICT CHARGES ADDED @ 3.00 %.	CuM	2.63	₹ 221.45	₹ 582.41

SI No.	Item Description	Unit	Quantity	Rate	Amount
21	Earthing with 50 mm dia GI pipe 3.64 mm thick x 3.04 Mts. long and 1 x 4 SWG GI (Hot Dip) wire (4 Mts. long), 13 mm dia x 80 mm long GI bolts, double nuts, double washers incl. S & F 15 mm dia GI pipe protection (1 Mts. long) to be filled with bitumen partly under the ground level and partly above ground level driven to an average depth of 3.65 Mts. below the ground level as below: By TATA-Medium GI pipe. [PWD Electrical Schedule Page No-G-1; Item No-2(a)] DISTRICT CHARGES ADDED @ 3.00 %.	Set	1	₹ 1,569.72	₹ 1,569.72
22	Supply, and fixing of 1 HP self Priming pump: Make- KSB, Peribloc-1 (UD & MA schedule P-44, 1-34) NO DISTRICT CHARGES ADDED.	Set	1	₹ 6,377.00	₹ 6,377.00
				Sub Total	₹ 68,677.96
				Add GST @ 18%	₹ 12,362.03
				Total excluding labour welfare cess	₹ 81,039.96
				Add Cess @ 1%	₹ 810.40
				Total including labour welfare cess	₹ 81,850.36
				Add 3 % Contingency on "Total excluding Labour Welfare Cess"	₹ 2,431.20
				Total Estimated value of the work	₹ 84,281.56
				Add: Service Connection Charges for 2000.00 Watt as per Quotation received from W.B.S.E.D.C.L. vide application No. 3005248879	₹ 6,907.00
				Grand Total	₹ 91,188.56
				Say	₹ 91,189.00

65946.46
11852.36
77698.52
776.98
78475.80
2330.96
80806.76
87713.76

(Rupees Ninety One Thousand One Hundred and Eighty Nine Only)

[Signature]
15/7/2025

Sub Assistant Engineer
Ranaghat Municipality

Say Rs. 87,714.00

[Signature]
Chairman
Ranaghat Municipality

Technically Vetted Rs. 87,714.00

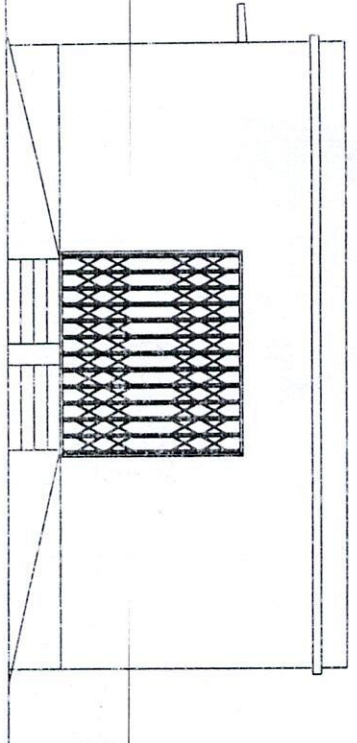
(Rupees Eighty Seven Thousand and seven Hundred and seven only.)

[Signature]
15.07.25
Junior Engineer
Electrical & Mechanical Division
SUDA

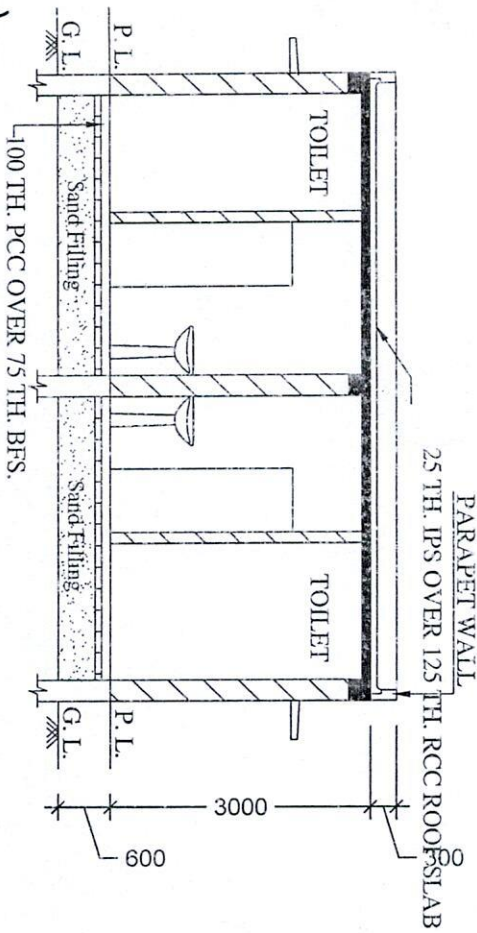
[Signature]
15/7/25
ASSISTANT ENGINEER
ELECTRICAL & MECHANICAL DIVISION
SUDA

[Signature]
21/7/25
Executive Engineer (E/M)
O/D the Secretary M.E. Div.
Government of West Bengal

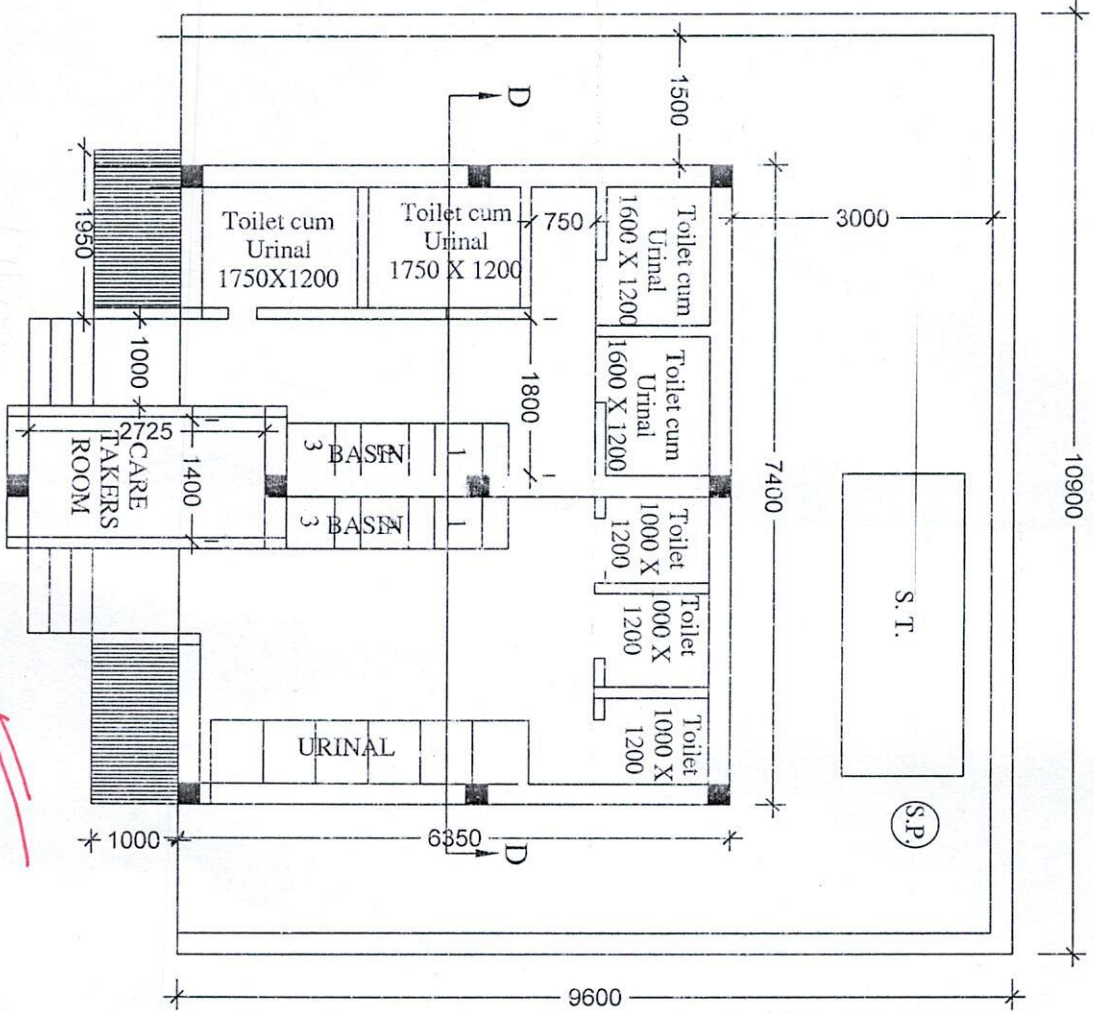
MODLE DRAWING FOR CONSTRUCTION OF C. T./PT
 TOILET SEAT 7 NOS, URINAL 10 NOS
 MODLE NO.- E



FRONT ELEVATION



SECTION - 'B - B'



PLAN

Signature
 16/7/2025
 Sub Assistant Engineer
 Ranaghat Municipality