

Construction Of Public Toilet Block Model No-ULB Civil Works Toilet Seat-2 And Urinal-2 Nos At Deshbandhu Road Under Baranagar Municipality, Ward No-09

This Estimate have been prepared on the basis of West Bengal PWD Schedule & sanitary and plumbing work Schedule of Rates(volume-I & volume-II)-2017

Sl. No.	Item No.	Item Description					Quantity	Rate	Unit	Amount
		Details	No.	L	B	H	Qty.			
1	Page - 1, Item -2.a	Earth work in excavation of foundation trenches or drains, in all sorts of soil (including mixed soil but excluding laterite or sandstone) including removing, spreading or stacking the spoils within a lead of 75 m. as directed. The item includes necessary trimming the sides of trenches, levelling, dressing and ramming the bottom, bailing out water as required complete. (a) Depth of excavation not exceeding 1,500 mm.					11.42	119.27	m3	1361.67
		Column	4	1.2	1.2	1	5.760			
		Tie Beam	1	7.35	0.35	0.375	0.965			
		Reservior	1	2.3	1.7	1.2	4.692			
		Total					11.42			
2	Page- 14, Item - 1	Single Brick Flat Soling of picked jhama bricks including ramming and dressing bed to proper level and filling joints with local sand. PWD Building Works schedule,					15.49	361	m2	5591.89
		Column	4	1.2	1.2		5.76			
		Tie Beam	1	7.35	0.25		1.838			
		Parti beam	2	1.35	0.125		0.338			
		Floor	1	1.5	1.35		2.025			
		Floor	1	1.2	1.35		1.62			
		Reservior	1	2.3	1.7		3.91			
		Total					15.49			
3	Page -47, Item -3	Supplying and laying Polythene Sheet (150gm / sq.m.) over damp proof course or below flooring or roof terracing or in foundation or in foundation trenches.					18.75	24	m2	450.00
		Open Space	1	5.5	1.5		8.25			
		Approch Road	1	7	1.5		10.5			
		Total					18.75			
4	Page -23, Item - B.1.a,	Cement concrete with graded jhama khoa (30 mm size) excluding shuttering In ground floor and foundation. (a) 1:3:6 proportion. PWD Building Works schedule,(Corri. Page-09, Date-04-06-2018)					3.207	4628.87	m3	14842.47
		Column	4	1.2	1.2	0.1	0.576			
		Floor	1	1.5	1.35	0.1	0.203			
		Floor	1	1.2	1.35	0.1	0.162			
		Reservior	1	2.3	1.7	0.1	0.391			
		Open Space	1	5.5	1.5	0.1	0.825			
		Approch Road	1	7	1.5	0.1	1.050			
		Total					3.21			
5	Page -47, Item -1	25mm. thick damp proof course with cement concrete with stone chips (1:1.5:3) [with graded stone aggregate 10 mm nominal size] and admixture of water proofing compound as per manufacturer's specification followed by two coat of polymer based paint, (1st coat after 4 to 5 days of concrete laying and 2 nd coat just before brick masonry work) as directed (cost of water proofing compound & polymer based paint to be paid separately).(Chequering not required over concrete or painted surface). [Note: - Waterproofing as per item 9, polymer based paint as per item 8 (a) of subhead C of Section (C).					0.931	184.28	m2	171.61
			1	7.45	0.125		0.931			
		Total					0.931			
6	Page -15, Item-7.a	Brick work with 1st class bricks in cement mortar (1:4) (a) In foundation and plinth					3.60	5613.36	m3	20192.31
		GL 2 PL	1	7.35	0.25	0.45	0.83			
		Front Stair	1	4.625	0.25	0.3	0.35			
			1	4.625	0.25	0.15	0.17			
		Reservior	1	7.5	0.25	1.2	2.25			

		Total				3.60					
7	Page - 16, Item - 16	125 mm. thick brick work with 1st class bricks in cement mortar (1:4) in ground floor.					21.56	728.47	m2	15704.90	
		Wall	1	8.7	2.375		20.66				
			1	1.35	0.175		0.24				
		Parapet	1	13.00	0.3		3.90				
		Less Door	-2	0.75	1.8		-2.70				
		Less Window	-4	0.45	0.3		-0.54				
		Total					21.56				
8	Page - 1, Item -3.a	Earth work in filling in foundation trenches or plinth with good earth, in layers not exceeding 150 mm. including watering and ramming etc. layer by layer complete. (Payment to be made on the basis of measurement of finished quantity of work). (a) With earth obtained from excavation of foundation.					7.53	7754.00	%m3	583.92	
		2/3rd of Earth work	1	0.66	11.41		7.5306				
		Total					7.53				
9	Page - 2, Item -4.a	(A) Filling in foundation or plinth by silver sand in layers not exceeding 150 mm as directed and consolidating the same by thorough saturation with water, ramming complete including the cost of supply of sand. (payment to be made on measurement of finished quantity)					1.27	93621.00	%m3	1193.32	
			1	2.575	1.1	0.45	1.27				
		Total					1.27				
10	Page -42, Item- 36.f	Hire and labour charges for shuttering with centering and necessary staging upto 4 m using approved stout props and thick hard wood planks of approved thickness with required bracing for concrete slabs, beams and columns, lintels curved or straight including fitting, fixing and striking out after completion of works (upto roof of ground floor) (f) 25 mm to 30 mm shuttering without staging in foundation					9.182	209.00	m2	1919.038	
			16	1.00		0.15	2.40				
			1	9.34		0.3	2.80				
			1	7.35		0.3	2.21				
			2	1.35		0.25	0.68				
			16	0.25		0.275	1.10				
		Total					9.182				
11	Page -42, Item- 36.a	Hire and labour charges for shuttering with centering and necessary staging upto 4 m using approved stout props and thick hard wood planks of approved thickness with required bracing for concrete slabs, beams and columns, lintels curved or straight including fitting, fixing and striking out after completion of works (upto roof of ground floor) (a) 25 mm to 30 mm thick wooden shuttering as per decision & direction of Engineer-In-Charge.					28.67	335.00	m2	9604.45	
			16	0.25		2.375	9.50				
			1	9.35		0.175	1.64				
			1	7.35		0.175	1.29				
			2	3.075		0.2	1.23				
			2	0.75		0.125	0.19				
			1	3.975	2.65		10.53				
			1	13.25		0.125	1.66				
			1	1.8	1.2		2.16				
			1	4		0.12	0.48				
		Total					28.67				
12	p-26 Item 10 a	Ordinary Cement concrete (mix 1:1.5:3) with graded stone chips (20 mm nominal size) excluding shuttering and reinforcement,if any, in ground floor as per relevant IS codes. a) Pakur Variety /Chandil Variety					4.48	5863.13	m3	26260.17	
			4	1	1	0.15	0.600				
			$4*0.1/3*(1*1+0.3*0.3+1*0.3)=0.185$					0.185			
			4	0.3	0.3	0.275	0.10				
			4	0.25	0.25	2.375	0.59				
			1	8.85	0.25	0.3	0.66				
			1	1.6	0.2	0.25	0.08				
			1	2.575	0.125	0.2	0.06				
			1	8.85	0.25	0.175	0.39				
			1	3.975	2.65	0.125	1.32				
			1	2.3	1.7	0.125	0.49				
		Total					4.48				

13	Page - 43, Item - 40.a.i.1	Reinforcement for reinforced concrete work in all sorts of structures including distribution bars, stirrups, binders etc initial straightening and removal of loose rust (if necessary), cutting to requisite length, hooking and bending to correct shape, placing in proper position and binding with 16 gauge black annealed wire at every intersection, complete as per drawing and direction. (a) For works in foundation and upto roof of ground floor/upto 4 m. (i) Tor steel/Mild Steel , JSPL/SWAYN/ELETRO/STEEL					0.402	55194.51	M.T	22172.54
		Footing	4	14	0.95	0.617	0.001	0.033		
		Column	4	4	4.175	0.89	0.001	0.059		
		Striup	4	22	0.85	0.39	0.001	0.029		
		Tie Beam	2	4	3.225	1.56	0.001	0.040		
			2	4	1.75	0.89	0.001	0.012		
		Striup	1	48	1.05	0.39	0.001	0.020		
		PL Beam	1	4	1.75	0.89	0.001	0.006		
		Striup	1	8	0.75	0.39	0.001	0.002		
		lintel	1	4	3.125	0.617	0.001	0.008		
		Striup	1	18	0.65	0.39	0.001	0.005		
		Roof Beam	2	4	3.225	1.56	0.001	0.040		
			2	4	1.75	0.89	0.001	0.012		
		Striup	1	48	1.05	0.39	0.001	0.020		
		Slab	2	24	2.55	0.39	0.001	0.048		
		Less1/3	-1	8	0.85	0.39	0.001	-0.003		
			1	15	3.87	0.39	0.001	0.023		
		Less1/3	-1	5	2.19	0.39	0.001	-0.004		
		UGR	1	19	1.65	0.39	0.001	0.012		
			1	14	2.25	0.39	0.001	0.012		
		Lapping	15	1	0.8	1.56	0.001	0.019		
		Lapping	15	1	0.6	0.89	0.001	0.008		
		Total						0.402		
14	P-48, It- 6.ii	Artificial stone in floor, dado, staircase etc with cement concrete (1:2:4) with stone chips, laid in panels as directed with topping made with ordinary or white cement (as necessary) and marble dust in proportion (1:2) including smooth finishing and rounding off corners including raking out joints or roughening of concrete surface and application of cement slurry before flooring..... 25 mm. thick For roofing					27.99	265.95	m2	7443.94
		Roof	1	3.85	2.4		9.24			
		Open Space	1	5.5	1.5		8.25			
		Approch Road	1	7	1.5		10.5			
		Total						27.99		
15	P-192, It. No. 15	Neat cement punning about 1.5mm thick in wall, dado, window sill, floor etc. NOTE:Cement 0.152 cu.m per100 sq.m.					19.66	32.75	m2	643.82
		Below Plinth	1	3.975		0.45	1.79			
			2	1.6		0.45	1.44			
		Reservior	1	6		1.2	7.2			
			2	1.8	1.2		4.32			
			1	2.3	1.7		3.91			
			1	8		0.125	1			
		Total						19.66		
16	P-192, It-1	Labour for Chipping of concrete surface before taking up Plastering work.					38.735	21.00	m2	813.435
		Lintel side	2	3.975		0.2	1.59			
		lintel btm	4	0.75		0.125	0.38			
		Beam	2	10.65		0.175	3.73			
		Beam	1	10.65		0.25	2.66			
		Slab bottom	1	3.975	2.65		10.53			
		Slab side	1	13.25		0.125	1.66			
		For roof treatment	1	3.75	2.4		9.00			
		Reservior	2	1.8	1.2		4.32			
			1	2.3	1.7		3.91			
			1	8		0.12	0.96			
		Total						38.735		

17	P-189 It- No. 1	Plaster (to wall, floor, ceiling etc.) with sand and cement mortar including rounding off or chamfering corners as directed and raking out joints including throating, nosing and drip course, scaffolding/staging where necessary (Ground floor).[Excluding cost of chipping over concrete surface] (i) With 1:6 cement mortar (c) 15 mm thick plaster				45.64	148.53	M2	6779.09
		Below plinth	1	6.275	0.45	2.82			
		Outer wall	1	3.075	2.55	7.84			
		Outer wall	1	6.275	0.6	3.77			
		Deduction	-2	0.75	1.95	-2.93			
		Iner Wall	1	5.70	0.75	4.28			
		Iner Wall	1	5.10	0.75	3.83			
		Parapet wall	1	13.25	0.725	9.61			
		Reservior	1	6.00	1.2	7.20			
			2	1.80	1.2	4.32			
			1	2.30	1.7	3.91			
			1	8.00	0.125	1.00			
		Total				45.64			
18	P-189 It- No. 1 (ii)©	Plaster (to wall, floor, ceiling etc.) with sand and cement mortar including rounding off or chamfering corners as directed and raking out joints including throating, nosing and drip course, scaffolding/staging where necessary (Ground floor).[Excluding cost of chipping over concrete surface] (ii) With 1:4 cement mortar (c) 10 mm thick plaster				10.53	130.53	M2	1374.97
		Slab bottom	1	3.975	2.65	10.53			
		Total				10.53			
19	P-115, It- 3 (i)	Supplying, fitting and fixing fibre reinforced polymer (FRP) Composite door frame as per approved section with glass fibre reinforced plastic moulded skins and a special sandwich core, so as to impart monolitaheic composite structure as per approved technology of Department of Science and Technology (DST) to safisfy IS: 4020 door testing performance criteria.. (i) 66mm x 90mm				8.7	497.00	Mtr	4323.9
			2	4.35		8.7			
		Total				8.7			
20	P-125, It- 14(ii)	Supplying, fitting & fixing fibre reinforced polymer (FRP) Composite door shutters as per approved design with glass fibre reinforced plastic moulded skins and a special sandwich core, so as to impart monolitaheic composite structure as per approved technology of Department of Science and Technology (DST) to satisfy IS:4020 door testing performance criteria. In ground floor. ii) 25 mm thick				2.30	2581.00	m2	5943.40
			2	1.734	0.664	2.30			
		Total				2.30			
21	P-144, It No. 26 (vii)	Anodised aluminium barrel / tower / socket bolt (full covered) of approved manufactured from extruded section conforming to I.S. 204/74 fitted and fixed with cadmium plated screws . (vii) 225mm long x 10mm dia. bolt.				2.00	84.00	Each	168.00
			2	1.00		2.00			
		Total				2.00			
22	P-140, It No. -5 (viii)	Iron butt hinges of approved quality fitted and fixed with steel screws, with ISI mark. (viii) 100mm X 75mm X 3.50mm				6.00	66.00	Each	396.00
			2	3.00		6.00			
		Total				6.00			
23	Page -146 . Item no- 31,(i)	Anodised aluminium decorative handle (hexagonal / fluted) of approed quality fitted and fixed complete. 150mm plate x 10mm dia rod x 12mm hexagonal/fluted.				4.00	87.00	Each	348.00
			2	2.00		4.00			
		Total				4.00			

24	Page -141 . Item no- 10 b)	Iron hasp bolt of approved quality fitted and fixed complete (oxidised) with 16mm dia rod with concrete bolt and round fitting. b)250mm long.	2.00	159.00	Each	318.00
			2	1.00		2.00
		Total				2.00
25	PWD, P- 198, I - 5	Rendering the Surface of walls and ceiling with White Cement base WATER PROOF wall putty of approved make & brand.(1.5 mm thick) In Ground Floor	56.18	122.00	m2	6853.35
		Same as Plaster Item - Plinth plaster		56.18		
		Total				56.18
26	Page -200 . Item no- 1 (b)	(b) Priming one coat on timber or plastered surface with synthetic oil bound primer of approved quality including smoothening surfaces by sand papering etc.	56.18	38.00	m2	2134.65
		Same as Plaster Item - Plinth plaster		56.18		
		Total				56.18
27	200 . Item no- 1 (b)	(A) Painting with best quality synthetic enamel paint of approved make and brand including smoothening surface by sand papering etc. including using of approved putty etc. on the surface, if necessary : Page - (a) On timber or plastered surface : With super gloss (hi-gloss) - (iv) Two coats (with any shade except white)	56.18	81.00	m2	4550.18
		Same as Plaster Item - Plinth plaster		56.18		
		Total				56.18
28	P-104 Item-13 A (i)	(a) M.S.or W.I. Ornamental grill of approved design joints continuously welded with M.S, W.I. Flats and bars of windows, railing etc. fitted and fixed with necessary screws and lugs in ground floor. (i)Grill weighing above 10 Kg./sq.mtr and up to 16 Kg./sq. mtr.	0.46	9888.00	Qty	4556.39
		Grill	4	0.6	0.45	0.16
		Box for pump	5	0.6	0.6	0.29
		Total				0.46
29	P/200 Item-1(a)	a) Priming one coat on steel or other metal surface with synthetic oil bound primer of approved quality including smoothening surfaces by sand papering etc.	2.88	29.00	m2	83.52
			4	0.6	0.45	1.08
			5	0.6	0.6	1.80
		Total				2.88
30	p-200 Item- 2(b)(iv)	(A) Painting with best quality synthetic enamel paint of approved make and brand including smoothening surface by sand papering etc. including using of approved putty etc. on the surface, if necessary : (b) On steel or other metal surface : (iv) Two coats (with any shade except white)	2.88	79.00	m2	227.52
			4	0.6	0.45	1.08
			5	0.6	0.6	1.80
		Total				2.88

31	Page-66 Item-36 (A)	Supplying and laying true to line and level vitrified tiles of approved brand (size not less than 600 mm X 600 mm X 10 mm thick) in floor, skirting etc. set in 20 mm sand cement mortar (1:4) and 2 mm thick cement slurry back side of tiles using cement @ 2.91Kg./sqM or using polymerised adhesive (6 mm thick layer applied directly over finished artificial stone floor/Mosaic etc without any backing course) laid after application slurry using 1.75 Kg of cement per sqM below mortar only, joints grouted with admixture of white cement and colouring Pigment to match with colour of tiles / epoxy grout materials of approved make as directed and removal of wax coating of top surface of tiles with warm water and polishing the tiles using soft and dry cloth upto mirror finish complete including the cost of materials, labour and all other incidental charges complete true to the manufacturer's specification and direction of Engineer-in-Charge. (White cement, synthetic adhesive and grout material to be supplied by the contrr]e) I (I) With application slurry @1.75 kg/ Sq.m, 20 mm sand cement mortar (1:4) & 2 mm thick cement slurry at back side of tiles, 0.2 kg/ Sq.m white cement for joint filling with pigment. (A) Deep Colour & White	6.57	1704.00	m2	11188.89
		Stair	1	3.075	0.95	2.92
		Floor	1	1.5	1.35	2.03
		Floor	1	1.2	1.35	1.62
		Total				6.57
32	page-64, Item:35.(B) (b).(ii)	Supplying, fitting & fixing 1st quality Ceramic tiles in walls and floors to match with the existing work & 4 nos.of key stones (10mm) fixed with araldite at the back of each tile & finishing the joints with white cement mixed with colouring oxide if required to match the colour of tiles including roughening of concrete surface, if necessary or by synthetic adhesive & grout materials etc. A)Wall b) Area of each tile above 0.09 Sq.m ii) Other than Coloured decorative including white	28.59	1047.00	m2	29937.65625
		Out side	1	6.275	1.95	12.24
		Door	-2	0.75	1.8	-2.70
		Door frame side	2	4.65	0.075	0.70
		Inner	1	5.7	1.95	11.12
		Inner	1	5.1	1.95	9.95
		Door	-2	0.75	1.8	-2.70
		Total				28.59
33	PWD, P- 233, I- 1(h) i	Supplying profiles of required section made of Aluminium Alloy Extrusions conforming to IS: 732-1983 and IS: 1285- 1975; Annodized (with required film thickness and specified colour / natural) matt finished conforming to IS: 1868-1983 for fabrication of composit door, sliding & casement windows, partitions, formed of basic sections of any ISI embossed / certified make and brand as per direction of Engineer - In- Charge. (Payment will be made on finished length of the work). (A) In 10-12 Micron thickness Annodizing film) Natural white h) Louvered window. i)Top, bottom and side member.	8.4	183.00	M	1537.2
			4	2.1		8.4
		Total				8.4
34		ii) Louvered Section.	7.2	658.00	M	4737.6
			12	0.6		7.2
		Total				7.2
35		ii) Cleat angle (Non-annodized).	6.48	263.00	M	1704.24
			12	0.54		6.48
		Total				6.48

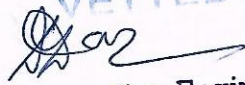
36	PWD, P-239, I-2 (v)	Labour charge for fabrication and installation of composite door, window, partitions made from anodized extruded alloy aluminium sections for the following units:- (A) Glazed aluminium sliding windows made of extruded and anodized alloy aluminium sections, fabrications, including cutting to proper shape and size, drilling and aligning of window shutter frame fitted with in built locking arrangements, sliding rollers and other necessary fittings, fixture, adhesives and joineries along with extruded neoprene or EPDM gasketing in between window frame and masonry work (walls, column, beam.lintels etc.) as well as between glass and shutter frame for fixing glass and Polysulphide sealant and in between shutter and window frame where necessary including cutting to requisite size and fixing glass as per drawing, specification and direction of EIC. The rate includes the hire charge of all tools and plants, including all incidental charges, adhesive, joineries such as screw, cleat angle etc. but excluding the cost of extruded aluminium sections, glass, neoprene / EPDM gasket, locking arrangement and rollers. v) Louvered window	1.08	730.00	m2	788.40
		4 0.6 0.45	1.08			
		Total	1.08			
37	P-243, I-9	Supplying bubble free float glass of approved make and brand conforming to IS: 2835-1987. iv) 5mm thick coloured / tinted / smoke glass.	1.08	585.00	Sq.M.	631.80
		4 0.6 0.45	1.080			
		Total	1.080			
38	P-268, It-17(e)	Painting block letters or digits in Black Japan or any approved paint as per direction. e) Size above 7.5 cm. and upto 10 cm.	450	12.00	Each	5400.00
39		Supplying, fitting and fixing 18 mm thick marble partition slab with chawk doongri marbel square cut, both sides polished with two front corners rounded and edges polished.	0.72	1426.00	m2	1026.72
		1 1.2 0.6	0.72			
		Total	0.72			
40	Page -261, It-9 (i)	Supplying and Planting of different plant / trees (Supplying well grown plants bushy and healthy, minimum height as specified i.e. exposed height including all leads & lift, carriage, handling, manuring, applying pesticide and fertilizer etc. . i) Furcaria veriegated 10-12 leaves in height 20-30cm in earthen pots of size 25cm.	4	162.00	Each	648.00
41	Page -261, It-9 (x)	x) Ficus blakii (F. Vivicon) well branched (Bushy) of height 120cm - 135 cm in earthen pot of size 30cm.	3.00	187.00	Each	561.00
42	Page -261, It-9 (xxvi)	xxvi) Areca Palm 4 - 5 suckers of height 90 cm to 105 cm in earthen pots of size 25 cm.	3.00	127.00	Each	381.00
43	page-79, item no -3 (a)	Supplying, fitting and fixing Anglo-Indian W.C. in white glazed vitreous china ware of approved make complete in position with necessary bolts, nuts etc. a) With 'P' trap (with vent)	2.00	3104.00	Each	6208.00
44	page-81, item no 10.b.i	Supplying, fitting and fixing Closet seat of approved make with lid and C.P. hinges, rubber buffer and brass screws complete .(b) Anglo Indian (i) Plastic (hallow type) White	2.00	380.00	Each	760.00
45	page.80, item no-6/(ii)	Supplying, fitting and fixing Flat back urinal (half stall urinal) in white vitreous chinaware of approved make in position with brass screws on 75 mm X 75 mm X 75 mm wooden blocks complete (ii) 470 mm X 280 mm X 340 mm	2.00	945.00	Each	1890.00
46	Page No.-36 Item No.-2,	Supplying, fitting and fixing 10 litre P.V.C. low-down cistern conforming to I.S. specification with P.V.C. fittings complete,C.I. brackets including two coats of painting to bracket etc.	2.00	1015.00	Nos	2030.00
47	Page no 81. Item no. 11(i)	Supplying,fitting and fixing 32 mm dia. Flush Pipe of approved make with necessary fixing materials and clamps complete. i) Polythene Flush Pipe	2.00	155.00	Each	310.00

48	S.P.81, item-12/a	Supplying, fitting and fixing urinal flush pipe fittings of approved brand. (a) C.P. urinal flush pipe fittings range of one	2.00	414.00	Each	828.00
49	P-41, It 2 (ii)	Supplying, fitting and fixing white vitreous china best quality approved make wash basin with C.I. brackets on 75 mm X 75 mm wooden blocks, C.P. waste fittings of 32 mm dia., mending good all damages and painting the brackets with two coats of approved paint. (ii) 550 mm X 400 mm size	2.00	2208.00	Each	4416.00
50	Page No.-43 Item No.-9-iii PWD,	Supplying, fitting and fixing approved brand P.V.C. CONNECTOR white flexible, with both ends coupling with heavy brass C.P. nut, 15 mm dia., (iii) 600 mm long	4.00	107.00	Each	428.00
51	Page No.-43 Item No. 10-iv	Supplying, fitting and fixing approved brand 32 mm dia. P.V.C. waste pipe, with PVC coupling at one end fitted with necessary clamps. (iv) 1050 mm long each	2.00	91.00	Each	182.00
52	Page No.-3 Item No. 3 f,	(f) Hand Shower (Health Faucet) with 1mtr Flexible Tube with Wall Hook (Equivalent to Code No. 573 & Model -ALLIED of Jaquar or similar).	2.00	1251.00	Each	2502.00
53	Page No.-6 Item No. 7-a-i	(a) (i) Chromium plated Bib Cock short body (Equivalent to Code No. 511 & Model -Tropical / Sumthing Special of ESSCO or similar brand).	2.00	539.00	Each	1078.00
54	Page No.-6 Item No. 7-b-i	(b) (i) Chromium plated Stop Cock (Equivalent to Code No. 513(A) & 513(B) & Model -Tropical / Sumthing Special of ESSCO or similar	2.00	493.00	Each	986.00
55	Page No.-6 Item No. 7-d-i,	Chromium plated angular Stop Cock with wall flange (Equivalent to Code No. 5053 & Model - Florentine of Jaquar or similar brand).	3.00	815.00	Each	2445.00
56	P. No. -45, Item. No. -19(a)i	Supplying, fitting and fixing pillar cock of approved make. a) (i) CP Pillar Cock - 15 mm. (Equivalent to Code No. 507 & Model - Tropical / Sumthing Special of ESSCO or similar brand).	2.00	555.00	Each	1110.00
57	Page No.-12 Item No.-19-i(a)	Supplying, fitting and fixing PVC pipes of approved make of Schedule 80 (medium duty) conforming to ASTM D - 1785 and threaded to match with GI Pipes as per IS : 1239 (Part I). with all necessary accessories, specials viz. socket, bend, tee, union, cross, elbo, nipple, long screw, reducing socket, reducing tee, short piece etc. fitted with holder bats clamps, including cutting pipes, making threads, fitting, fixing etc. complete in all respect including cost of all necessary fittings as required, jointing materials and two coats of painting with approved paint in any position above ground. (Payment will be made on the centre line measurements of total pipe line including all specials. No separate payment will be made for accessories, specials. Payment for painting will be made separately) (a) For Exposed Work PVC Pipes, 25 mm	15.00	177.00	Mtr	2655.00
58	Page No.-12 Item No.-19-i(a)	(a) (a) For Exposed Work PVC Pipes, 15 mm	6.00	101.00	Mtr	606.00
59	Page No.-12 Item No.-19-i(b)	(b) For Concealed Work PVC Pipes, 15 mm	7.00	137.00	Mtr	959.00
60	S&P Schedule, P-5 It-5,vii),	Supplying and fitting fixing of gunmetal wheel valve of approved brand and make tested to 21 Kg per sq. cm. 25 mm dia (E5)	2.00	778.00	Each	1556.00
61	page.37, item no-6 (b)	Supplying P.V.C. water storage tank of approved quality with closed top with lid (Black) - Multilayer (b) 1000 litre capacity	1.00	5128.00	Each	5128.00
62	page.37, item no-10 (i)(a)	Labour for hoisting plastic water storage tank. (i) Upto 1500 litre capacity. (a) Upto 1st story from G.L.	1.00	96.00	Each	96.00

63	P. No. - 38, Item. No. - 13	Labour for punching hole in plastic water storage tank upto 50 mm dia.	2.00	19.00	Each	38.00
64	Page No.- 68 Item No. 23,(A)(i)(b)	Supply of UPVC pipes (B Type) & fittings conforming to IS-13592- 1992.(A) (i) Single Socketed 3 Meter Length, (b) 110 mm	15.00	292.00	Mtr	4380.00
65		(B) Fittings (i) Coupler, (b) 110 mm	5.00	85.00	Each	425.00
66		(ii) Plain Tee, (b) 110 mm	5.00	85.00	Each	425.00
67		(iii) Door Tee, (b) 110 mm	4.00	195.00	Each	780.00
68		ix) Bend 45°, (b) 110 mm	5.00	89.00	Each	445.00
69		xi) Door Bend (T.S.), (b) 110 mm	4.00	147.00	Each	588.00
70		xvi) Pipe Clip, (b) 110 mm	15.00	21.00	Each	315.00
71		xvii) W.C. Connector (150 mm long) 125 X 110(W/WC Ring) 75 mm	2.00	142.00	Each	284.00
72		xxxi) Plain Floor Trap with Top tile & Strainer 75 mm	3.00	144.00	Each	432.00
73		L) Rubber Ring, (b) 110 mm	15.00	17.00	Each	255.00
74		C)Rubber Lubricant 500 ML	1.00	187.00	500 ML	187.00
75		D)Solvent Cement 250 ML	1.00	103.00	250 ML	103.00
76	P. - 74, Item. No. 24 (B)	Labour for fitting and fixing U.P.V.C. pipes for above ground work including cost of jointing materials etc. fitting and fixing all necessary specials, cutting pipes, cutting holes in total pipeline including specials. (B) Under ground, (ii) 110 mm dia.	15.00	84.00	Mtr	1260.00
77	P. - 212, Item. No. 21 (A)(i), (B),(c),(i) & (B), (d),(i)	Supplying, fitting & fixing UPVC pipes A- Type and fittings conforming to IS:13592-1992 with all necessary clamps nails, including making holes in walls, floor etc. cutting trenches in any soil through masonry concrete structures etc if necessary and mending good damages including joining with jointing materials (Spun Yarn, Valamoid/Bitumen/M-Seal etc) complete. A) UPVC Pipes: (i) 75 mm. Dia.	10.00	188.00	Mtr	1880.00
78		B) UPVC Fittings: c) Bend 87.5 degree (i) 75 mm. Dia.	2.00	84.00	Mtr	168.00
79		B) UPVC Fittings: d) Shoe (i) 75 mm. Dia.	2.00	78.00	Mtr	156.00
80	S.P.87, Item No-1/(i)	Constructing Inspection pit of inside measurement 600mm X 600mm X upto 600mm (depth) with 250 mm thick 1st. class brick work in cement mortar (1:4) on all sides, bottom of the pit consisting of 100 mm thick cement concrete (1:3:6) with stone chips over a layer of jhama brick flat soling, 15 mm thick (1:4) cement plaster to inside walls and out-side walls upto G.L. and 20 mm.thick (1:4) plaster to bottom of the pit, providing necessary invert with cement concrete (1:3:6) with stone chips as per direction, neat cement finishing to entire internal surfaces, top of the pit covered with 100 mm thick R.C.C. slab (1:1.5:3) with stone chips and necessary reinforcements upto 1% and shuttering including 6 mm thick cement plaster (1:4) in all external surfaces of the slab and one 560 mm dia. R.C.C. manhole cover of approved make supplied, fitted and fixed in the slab with necessary fittings, necessary earthwork in excavation in all sorts of soil, filling sides of the pit with earth and removing spoils after work complete in all respect with all costs of labour and materials. i) With Pakur variety (Other than SAIL/TATA/RINL).	2.00	7248.00	Each	14496.00

81	S&P Schedule, S.P.88, Item No-3(ii)(A)	cover (heavy type) of approved make supplied, fitted and fixed in the 100mm thick R.C.C (1:1.5:3) top slab with necessary fittings, 20mm thick cement plaster (4 : 1) with neat cement finish to the internal surfaces and 15 mm thick cement plaster (4 : 1) to outside wall upto 200 mm below G.L floor finished with 25 mm thick grey artificial stone over 100 mm thick R.C.C(1:1.5:3) bottom slab including supplying, fitting and fixing all necessary specials, fittings, S.W. tees, C.I. foot rest etc. including excavation earth in all sorts of soil, shoring, bailing out and pumping out water as necessary, ramming, dressing the bed and refilling the sides of the tanks with earth, removing spoils, filling up the chamber with clear water, removing foreign materials from the chamber and including constructing attached inspection pit as per approved drawing and connecting all necessary pipes, joints etc. with internal plaster work and artificial stone flooring is to be done with admixture of water proofing compound @ 0.5% by weight of cement with all costs of labour and materials. (ii) For 20 users A) With Pakur variety. (JSW/JSPL/SHYAM/SRMB/ELECTROSTEEL/SSL)	1.00	48162.00	Each	48162.00
82	S.P.89, Item No-4	Construction of circular soak well 2.5 metre deep in all types of sandy soils with dry brick work upto 1.6 metre from the bottom having 150 mm intermediate cement brick work (1:4) band all round and cement brick work (1:4) upto 0.90 metre from top with 20mm thick cement plastering (1:4) to inside face upto the depth of cement brick work, 15mm thick cement plaster (1:4) on outer face from top of the well upto G.L and 6 mm thick cement plaster (1:4) on top of the R.C.C. cover slab including filling bottom 1.00 metre of inside of the well with brick metal (50 mm to 63 mm size) including R.C.C. cover slab of 100 mm thick with cement conc (1:1.5:3) with stone chips with necessary reinforcement and shuttering including one 560 mm dia. R.C.C.manhole cover (heavy type) of approved make supplied, fitted and fixed in the cover slab with necessary fittings, making necessary arrangements for pipe connections, excavation of well including shoring, dewatering and removing the excess earth from the premises as per direction complete in all respect with all costs of labour and materials. With 250 mm thick dry brick work and 250 mm thick cement brick work (1:6) and 1.00m inside dia. (Other than SAIL/TATA/RINL)	1.00	16621.00	Each	16621.00
83	p No 82 I No- 22 (a)(ii)	Supplying, fitting and fixing towel rail with two brackets. (a) C.P. over brass (ii) 25 mm dia. and 600 mm long	2.00	430.00	Each	860.00
84	page- 37, item no. 8	Supplying, fitting and fixing cast iron raised rain proof tank cover 500 mm dia. with locking arrangements (weighing not less than 12 kg).	1.00	1263.00	Each	1263.00
85	P-81, It- 15(ii)	Supplying, fitting and fixing bevelled edged mirror 5.5 mm thick silver red as per I.S. 3438 / 1965 together with brass C.P. hinges. (ii) 600 mm X 450 mm	1.00	484.00	Each	484.00
86	P-82, It- 18(b)	Supplying, fitting and fixing soap holder. (b) Fibre glass	3.00	58.00	Each	174.00
87	P-81, It- 16(a)(i)	Supplying, fitting and fixing glass shelf with aluminium guard rails. (a) Ordinary type with 5.5 mm sheet glass (i) 450 mm X 125 mm	2.00	341.00	Each	682.00
Sub Total Of (A)						356584.96
Add S.G.S.T. @ 9%						32092.6467
Add C.G.S.T. @ 9%						32092.6467
Cost Of Civil & Sanitary Work						420770.26
Add L.W.C. @ 1%						4207.70
Total payable Amount Including L.W.C.						424977.96
Add Contengency @ 3%						12749.34
Total payable Amount Including L.W.C. and contengency						437727.30
Say Rs.						437727.00

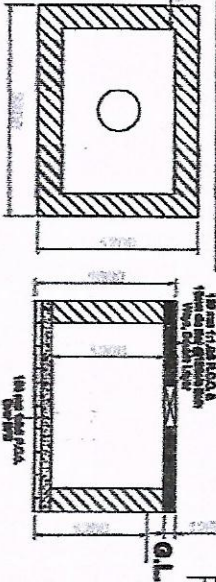

(Aparna Moulik)
Chairman
Baranagar Municipality

VETTED

Superintending Engineer
W & S (GAP) Sector
K.M.D.A.

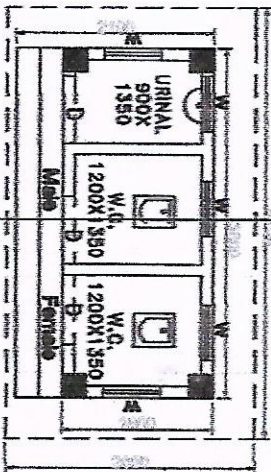

Rejuan Hasan
Nodal Engineer
Solid Waste Management
Baranagar Municipality

Door - Window Shades

MKD.	Size
D	750X1800
W	600X450



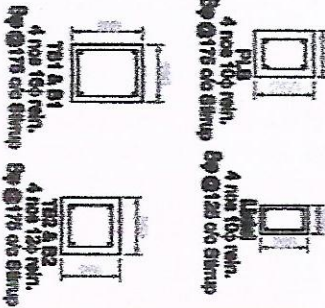
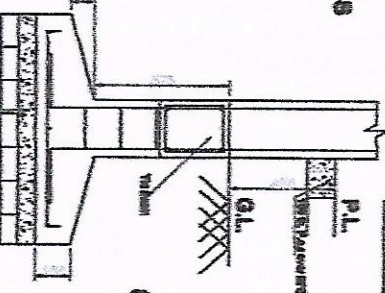
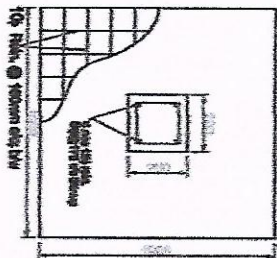
Under Ground Reservoir Details



Ground Floor Plan

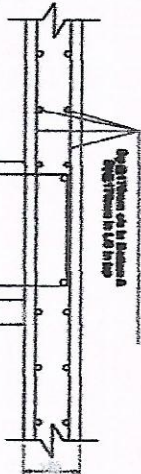
DETAILS OF FOUNDATION

(SCALE 1:25)



Typical Beam Details

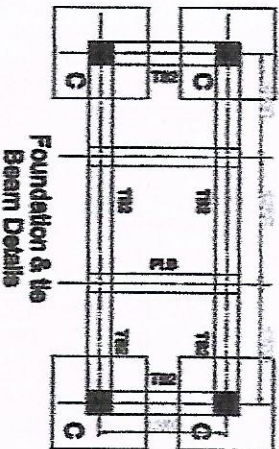
Slab Beam Details



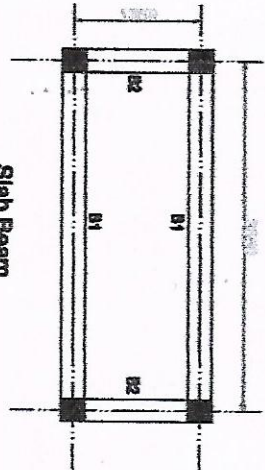
Area Statement

Builtup Area - 6.08 Sq.m.
Roof Area - 12.45 Sq.m.

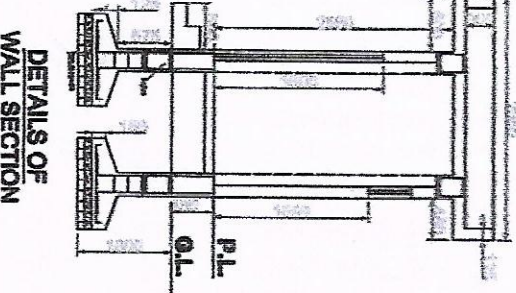
MKD #	Size	Reinforcement	Spacing
T1&B1	250x300	4 nos 16mm rebars	150mm
T2&B2	200x250	3 nos 16mm rebars	150mm
At Column	250x250	4 nos 16mm rebars	150mm



Foundation & the Beam Details



Slab Beam



DETAILS OF WALL SECTION

Model Plan No. - CT-1

General notes

1. all dimensions are in mm.
2. outer wall is 125 mm.th. with 1st class bricks in cement mortar(6:1) and partition wall is 125mm. th. in cement mortar(4:1)
3. grade of concrete M-20 ordinary cement concrete (mixture:1.5:3)
4. grade of steel: Fe-510
5. 25mm. th d.p.c.(mixture:2:4) will be applied
6. plastering: outside-15mm. th. in cement mortar(1:6) inside-15mm. th. in cement mortar(1:6) ceiling-10mm. th. cement mortar(1:4)
- Bearing capacity of soil at depth 1m below G.L. = 110 kn/m2, which much be exploded before construction. redrawing & redesign is necessary is bearing capacity of soil is poor than assumed.

Hasan
Rejuan Hasan
Nodal Engineer
Solid Waste Management
Baranagar Municipality

**NAME OF WORK:- ESTIMATE FOR ELECTRICAL WORK OF 2 SEATED PUBLIC TOILET AT
SHBANDHU ROAD LOCATED AT WARD NO.9 UNDER BARANAGAR MUNICIPALITY OF WEST
BENGAL (ULB MODEL)
[ASPIRATIONAL PARAMETER]**

* As per PWD & I & WD schedule district charges will be applicable on PWD & I & WD schedule items

* No district charges will be applicable on non-schedule items

Sl No.	Item Description	Unit	Quantity	Rate	Amount
1	Distribution wiring in 2 x 22/0.3 (1.5 sqmm) single core stranded 'FR' PVC insulated & unsheathed copper wire (Brand approved by EIC) in 20mm size PVC rigid conduit 'FR' (Precision make), with 1x22/0.3 (1.5 sqmm) single core stranded 'FR' PVC insulated & unsheathed copper wire for ECC, to light/fan/call bell points with Piano Key type switch fixed on MS CRC sheet metal (16 SWG) switch board cum JB on wall complete with 2 no. suitable size "Ph & N" copper bar incl. bakelite/Perspex (wall matching color) top cover 3 mm thick and incl. 175mmx100mmx65mm inspection box, making earthing attachment, painting the MS box and mending good the damages to original finish. [PWD Schedule Page No-E-14 Item No-2a] Average run 5 mtr	Point	8 9	612.00	4896.00 5508/-
2	Distribution wiring in 1.1 KV grade 22/0.3 (1.5 sqmm) single core stranded 'FR' PVC insulated & unsheathed copper wire (Brand approved by EIC) in 20mm size PVC rigid conduit 'FR' (Precision make), with 1.1 KV grade 1 x 22/0.3 (1.5 sqmm) single core stranded 'FR' PVC insulated & unsheathed copper wire as ECC, to 5A 3 pin flush type plug socket & Piano Key type switch fixed on MS CRC sheet metal (16 SWG) switch board cum JB on wall incl. bakelite/Perspex (wall matching color) top cover 3 mm thick and incl. painting the MS box and mending good the damages to original finish On Board (only for pay counter) [PWD Schedule Page No-E-15; I-4a]	Point	1 2	67.00	134.00 67/-
3	Supplying and fixing 240V 32A Double Pole AC Type 30mA RCCB.(Complete Set) (ISI marked) [Make- Legrand] (Cat No 4113/95) [Legrand Page No-92]	Nos	1 1	5942.00	5942.00
4	Distribution wiring in 1.1 KV single core stranded 'FR' PVC insulated & unsheathed copper wire (Brand approved by EIC) in 20mm size PVC rigid conduit 'FR' (Precision make) incl. necy. fittings as required 2 x 36/0.3 (2.5 sqmm) + 1 x 22/0.3 (1.5 sqmm) ECC [PWD Schedule Page No-E-14 Item No-1a(ii)]	mtr	15 20	119.00	2380.00 1785.00

5	Supplying and fixing double-door SPN MCB Distribution Board with IP-42/43 protection, concealed in wall after cutting the wall & mending good the damages to original finish incl. Inter connection with suitable size of copper wire and neutral link & provision for earthing attachment. a) For (2+4 way) (Make -Havells) [PWD Schedule Page No-D-9;Item No-13]	No	1	935.00	935.00
6	Supplying and fixing 240/415 V MCB of Breaking capacity 10kA & C characteristics on din rail of existing DBs and necessary connection 6-32A SP MCB (Make -Havells) [PWD Schedule Page No-D-6;Item No-7]	Nos	3 4	168.00	504.00 672/-
7	Supplying and fixing 240/415 V MCB Isolator on din rail of existing DBs and necessary connection. 40A DP MCB Isolator (Make -Havells) [PWD Schedule Page No-D-5;Item No-6]	Nos	1	208.00	208.00
8	Supply of TMC501 conventional industrial batten (Philips make) LED Tube,model no- TMC501 P1xT-LED 22W P3241 (WB I & WD schedule P-113, I- 5:3 F.22)	Nos	2	451.00	902.00
9	Fixing only single/twin fluroscnt light fitting complete with all accessories directly on wall/ceiling by screws etc.. [PWD Schedule Page No-C-2;Item No-14a]	Nos	2	86.00	172.00
10	Supply & fixing Bulk head light fittings with die cast aluminium housing frosted/clear glass on wall/ceiling incl S/F 9 watt LED Lamp complete set. [Make - Havells] (PWD sch - Page--D-13, I-23)	Nos	2	654.00	1308.00
11	Supply & fixing smart bright street light complete with all accessories to be fixed from the wall of building or on pole incl. making holes /providing clamping arrangement & necy. GI reducer as required.S&F 40 mm GI Pipe 1.5 mtr average length & s&f necy length of 1.5 sqmm pvc insulated single core copper wire & making connections as required & mending good damages incl wall paingting. (30 Watt) (Make - Bajaj) [WB I&WD sch P-111, I-f.9.0.2]	Nos	1	3016.00	3016.00
12	Supply of 9" domestic metal exhaust fan 9" (225mm)SWEEP. TRANS AIR - (Make-Crompton/Havells/Bajaj) (UD & MA schedule P-14, I-5))	Nos	2	1863.00	3726.00
13	Fixing only exhaust fan after making hole in wall and making good damages and smooth cement finish etc. as practicable as possible and providing necy. length of PVC insulated wire and making connection for exhaust of following diameter: 22.5 cm (9") [PWD Schedule Page No-C-4;Item No-28(b)]	Nos	2	247.00	494.00

14	Fixing only louver shutter/cowl on wall with necy. bolts & nuts mm dia x 62 mm long for 22.5 cm(9") Exhaust fan [PWD Schedule Page No-C-4;Item No-30(b)]	Nos	2	82.00	164.00
15	Supply of 240V A.C Ceiling Fan (48" sweep,1200 mm complete) [Make-Crompton [for counter only] (UD & MA schedule P- 23, I- 70)	Each	1	2283.00	2283.00
16	Fixing only Ceiling Fan [PWD sch P- C-3, I-21(a)]	Each	1	66.00	66.00
17	Supply & Fixing 240 V, 16/20 A Piano key type switch (Brand approved by EIC) on sheet metal switch board incl. S & F 100x100x65mm MS (16SWG) switch board and bakelite/perspex top cover of 3mm thick by Brass screws after making housing for switch by cutting bakelite/perspex cover and making necessary connections as required. (For Hand Dryer machine) [PWD sch P- E-6, I-17(b)]	Each	1	201.00	201.00
18	S/F 240V 25A Modular type starter (brand approved by EIC)with 25 A. Modular switch DP MCB (C-Curve)and 4 Module G.I. Moduar type switch board with 4 Module Top Cover Plate flushed in wall incl. S/F switch board and Cover Plate and making necy. Connections with PVC Copper wire and earth connectivity wire etc. as per schedule [for Pump] [PWD Schedule Page No-E-19, Item No-17] (Please follow in details)	Nos	1	784.00	784.00
19	Supply and Fixing of 2 mm Polyvinyl glow sign board made of 22 SWG GI sheet box with 1"X1" aluminum channel for fixing the vinyl board after necessary cutting the letter as required & s/f LED tube light fittings along with all accessories. (16 sqft @495.00/sqft) (UD & MA schedule P-14, I-4)	Nos	1	7920.00	7920.00
20	Earthing installation by GI earth Spike (1830 X 20 mm) including 8SWG GI EarthWire & GI nuts, bolts, washer etc.	Nos	1	450.00	450.00
	Supply, and fixing of 1 HP self Priming pump: Make- KSB, Peribloc-1 (UD & MA schedule P-44, I-34)	Each	1	6377.00	6377.00
				Total	42862.00
				Add 18% GST	7715.16
				Total With GST (A)	50577.16
				Cess@1%	505.77
				total	51082.93
Contingency Amount on "A"				Contingency@3%	1517.31
(Total+GST)=Rs:				Total	52600.25
				Say Rs.	52600.00
Service Connection Charges as per Quotation					

42980.00
7736.40
50716.40
507.16
51223.56
1521.49
52745.05
52,745.00

Kousik Dey
KOUSIK DEY
S.A.E. (ELECTRICAL)
Baranagar Municipality

Aparna Moulik
(Aparna Moulik)
Chairman
Baranagar Municipality

24.07.25
Junior Engineer
Electrical & Mechanical Division
SUDA

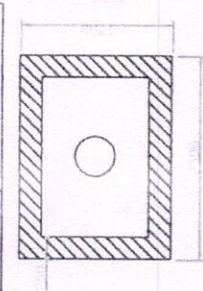
24.07.25
ASSISTANT ENGINEER
ELECTRICAL & MECHANICAL DIVISION
SUDA

Technically Vetted Rs.: 52,745.00
(Rupees Fifty two thousand seven hundred forty five only.)

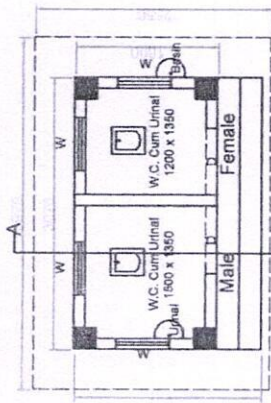
24/7/25
Executive Engineer (E/M)
O/O the Secretary M.E. Dte.
Government of West Bengal

Door - Window Schedule

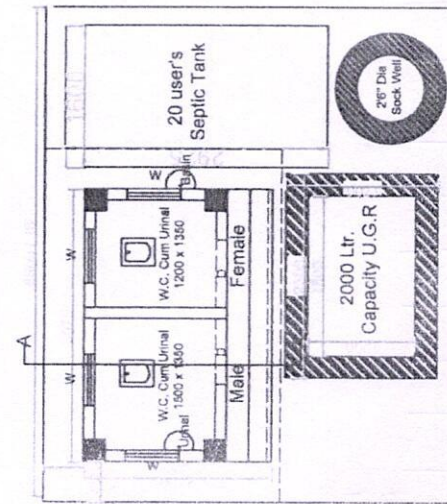
MKD.	Size
D	750x1800
W	600x450



Under Ground Reservoir Details



Ground Floor Plan



Sample Site Plan For CT Plan 1

ULB Model
(Sealed)

- BHLP → 02
- TL → 02
- OL → 01
- EF → 01
- EF → 02
- GSB → 01

09 plb

Handwritten signature

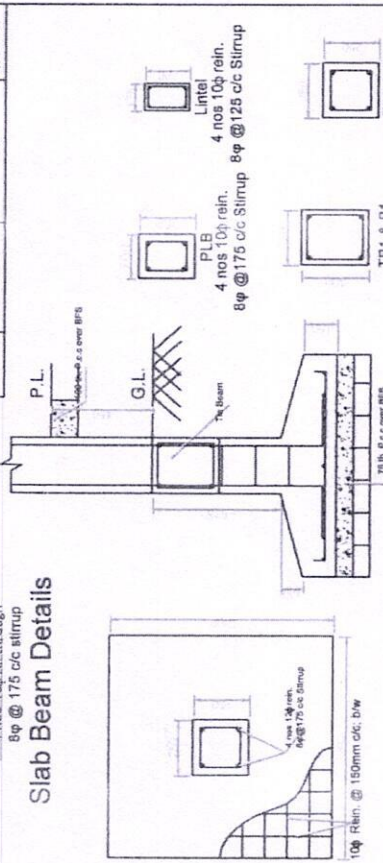
KOUSIK DEY
S.A.E. ELECTRICAL
Balanagar Municipality

Handwritten signature
Balanagar Municipality

Area Statement

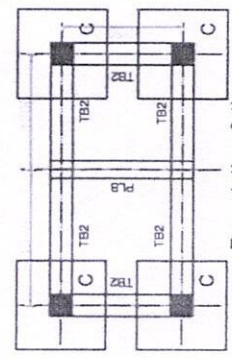
Builtup Area - 4.92 Sq.m.
Roof Area - 10.53 Sq.m.

MKD.	Size	Reinforcement		Stirrup
		Support	Span	
TB1&B1	250x300	2#10@150 c/c	2#10@150 c/c	8# @175 c/c
TB2&B2	200x250	2#10@150 c/c	2#10@150 c/c	8# @175 c/c
All Column	250x250	4#12#		8# @175 c/c

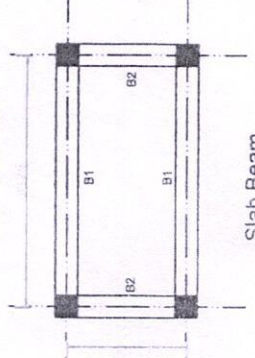


Typical Beam Details

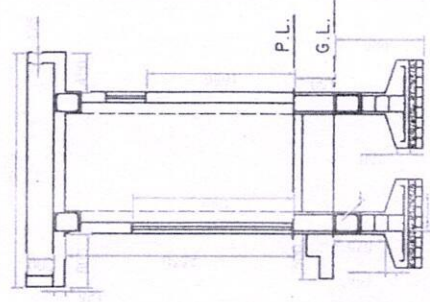
DETAILS OF FOUNDATION (SCALE 1:25)



Foundation & tie Beam Details




Slab Beam Details

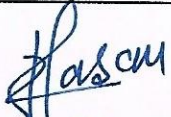


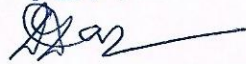
DETAILS OF WALL SECTION A-A

**Construction Of Public Toilet Block Model No-ULB Civil Works Toilet Seat-2 And Urinal-2 Nos At
Deshbandhu Road Under Baranagar Municipality, Ward No-09, NON SCHEDULE ITEMS**

SL.NO	Item Description & Item No.	Quantity	Rate	Unit	Ammount
1	Non Shedule Item Sl. No. 91-106 (Order as per SUDA) standard plastic dustbin (12lits)	2	350	Each	700.00
2	Sinage APC based & Reflective vinyl	5	3776	each	18880.00
3	Supplying and fixing sinage with fixing stand post for public toilet for visible to passersby	5	1000	Each	5000.00
4	Glow Sign board Name and contact details of the following are displayed prominently - Toilet Identification number , name of ULB under which	1	5000	each	5000.00
5	Installation of Sinage	1	2071	each	2071.00
6	Air freshner(pack of 4nos)	8	216	Each	1728.00
7	Air freshner (Napthaline 250 gm)	5	210	Each	1050.00
8	Supplying paper Napkin	5	50	Each	250.00
9	Supplying Sanitary Napkin (Whisper or similar make 50 pcs)	4	520	Each	2080.00
10	Harpic (blue 500 ml)	4	300	Each	1200.00
11	Harpic (Red 500 ml)	4	150	Each	600.00
12	Gala double lip floor wiper	4	350	Each	1400.00
13	Colin glass or surface cleaner	2	200	Lit	400.00
14	Muriatic Acid	2	145	Lit	290.00
15	Bleaching powder	4	120	Kg	480.00
16	Dettol ,lifeboy or similar make liquid soap	8	140	Lit	1120.00
17	Rubber hand gloves	6	80	Pair	480.00
18	Double side plastic brush	6	125	Each	750.00
19	Plastic Broom	4	170	Each	680.00
20	SMS/any other ICT based feedback system (With number displayed on which SMS has to be sent)	1	5000	each	5000.00
21	Mini Tulu Pump	1	4000	each	4000.00
22	supplying roaster /register for keeping account of regular cleanig	3	200	Each	600.00
23	Lettering on Toilet Wall for display of name and contact details of ULB ward number and name of maintanance authority , saniinspector, etc.	1	1000	each	1000.00
			TOTAL	Rs.	54759.00
			Add Labour.Welfare.Cess. 1%	Rs.	547.59
			Total Amount Including Labour.Welfare.Cess.	Rs.	55306.59
			Add Contengency@ 3 %	Rs.	1659.20
			GRAND TOTAL	Rs.	56965.79
			Say	Rs.	56966.00

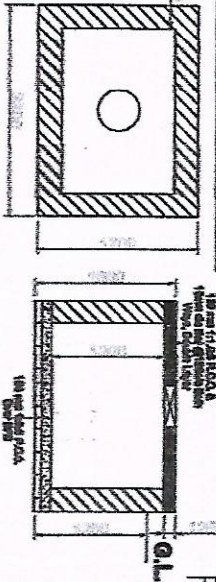

(Aparna Moulik)
Chairman
Baranagar Municipality


Rejuan Hasan
Nodal Engineer
Solid Waste Management
Baranagar Municipality

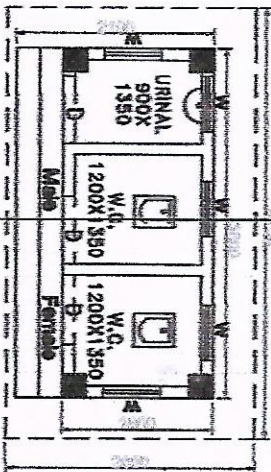
VETTED

Superintending Engineer
W & S (GAP) Sector
K.M.D.A.

Door - Window Shades

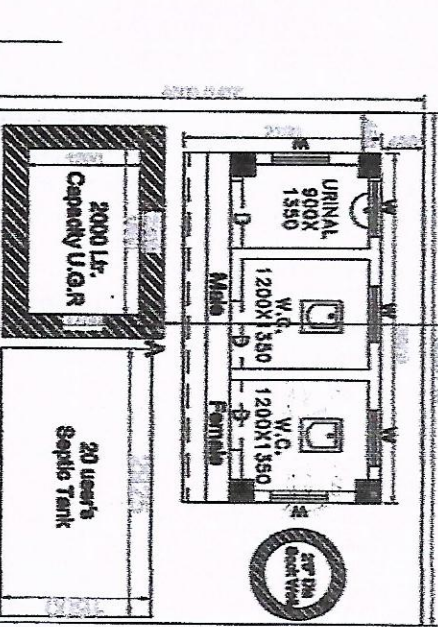
MKD.	Size
D	750X1800
W	600X450



Under Ground Reservoir Details



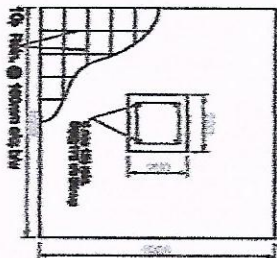
Ground Floor Plan



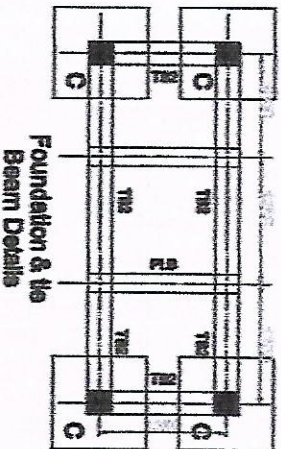
Sample Site Plan



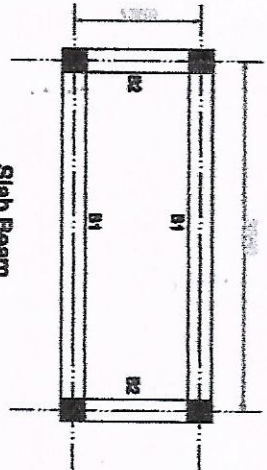
Slab Beam Details



DETAILS OF FOUNDATION (SCALE 1:25)

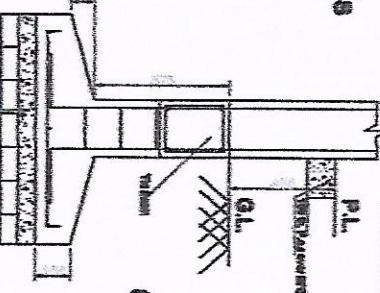


Foundation & the Beam Details

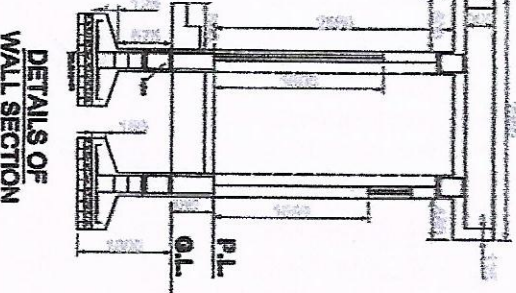


Slab Beam

MKD #	Size	Reinforcement		Spacing
		Support	Span	
T/10A1	250x300	4 nos 16mm	4 nos 16mm	150mm
T/10A2	200x250	4 nos 12mm	4 nos 12mm	150mm
At Column	250x250	4 nos 16mm	4 nos 16mm	150mm



Typical Beam Details



DETAILS OF WALL SECTION

Area Statement

Builtup Area - 6.08 Sq.m.
Roof Area - 12.45 Sq.m.

Model Plan No. - CT-1

General notes

1. all dimensions are in mm.
2. outer wall is 125 mm.th. with 1st class bricks in cement mortar(6:1) and partition wall is 125mm. th. in cement mortar(4:1)
3. grade of concrete M-20 ordinary cement concrete (m:x:1:1.5x)
4. grade of steel: Fe-510
5. 25mm. th d.p.c.(m:x:1:2:4) will be applied
6. plastering: outside-15mm. th. in cement mortar(1:6) inside-15mm. th. in cement mortar(1:6) ceiling-10mm. th. cement mortar(1:4)
- Bearing capacity of soil at depth 1m below G.L. = 110 kn/m2, which much be exploded before construction. redrawing & redesign is necessary is bearing capacity of soil is poor than assumed.

Hasan
Rejuan Hasan
Nodal Engineer
Solid Waste Management
Baranagar Municipality