

**ESTIMATE FOR THE CONSTRUCTION OF PUBLIC TOILET JORA MASJID MIYABAZAR IN WARD NO-14 UNDER MIDNAPORE MUNICIPALITY. TOILET SEATS -4 NOS AND URINAL- 5 NOS**

SL.NO	Item Description & Item No.	Quantity	Rate	Unit	Amount
1	Earth work in excavation of foundation trenches or drains, in all sorts of soil (including mixed soil but excluding laterite or sandstone) including removing, spreading or stacking the spoils within a lead of 75 m. as directed. The item includes necessary trimming the sides of trenches, levelling, dressing and ramming the bottom, bailing out water as required complete. (a) Depth of excavation not exceeding 1,500 mm. PWD Building Works schedule Page - 1, Item -2.a COLM. $3 \times 2 \times 1.20 \times 1.20 \times 1.00 = 8.64 \text{ M}^3$ partition wall $1 \times 1.00 \times 0.375 \times 0.150 = 0.056 \text{ m}^3$	8.696	119.27	Cu.m	1037.17
2	Earth work in filling in foundation trenches or plinth with good earth, in layers not exceeding 150 mm. including watering and ramming etc. layer by layer complete. (Payment to be made on the basis of measurement of finished quantity of work). (a) With earth obtained from excavation of foundation. PWD Building Works schedule, Page - 1, Item -3.a	8.696	77.54	Cum	674.29
3	Filling in foundation or plinth by silver sand in layers not exceeding 150 mm as directed and consolidating the same by thorough saturation with water, ramming complete including the cost of supply of sand. (payment to be made on measurement of finished quantity) PWD Building Works schedule, Page - 2, Item -4.a (B) Do by fine sand $1 \times 5.10 \times 4.55 \times 0.325 = 7.542 \text{ m}^3$	7.542	599.61	Cum	4522.26
4	Single Brick Flat Soling of picked jhama bricks including ramming and dressing bed to proper level and filling joints with local sand. PWD Building Works schedule, Page- 14, Item - 1 ( Corri. Page-01, Date-04-06-2018) $3 \times 2 \times 1.20 \times 1.20 = 8.64 \text{ m}^2$ $2 \times 2.50 \times 0.375 = 1.88 \text{ m}^2$ $1 \times 1.00 \times 0.375 = 0.375 \text{ m}^2$ $2 \times 1.50 \times 1.00 = 3.00 \text{ m}^2$ $1 \times 5.10 \times 4.55 = 23.21 \text{ m}^2$	37.10	343.00 344.00	Sqm	12725.30 12762.90
5	Ordinary Cement concrete (mix 1:1.5:3) with graded stone chips (20 mm nominal size) excluding shuttering and reinforcement,if any, in ground floor as per relevant IS codes. a) Pakur Variety /Chandil Variety PWD Building Works schedule, p-26 Item 10 a (Rate Analysis ) $2 \times 3 \times 1.20 \times 1.20 \times 0.150 = 1.296 \text{ m}^3$ $2 \times 3 \times (1.20 \times 1.20) + (0.250 \times 0.250) / 2 \times 0.150 = 0.676 \text{ m}^3$ $2 \times 3 \times 0.250 \times 0.250 \times 3.90 = 1.463 \text{ m}^3$ $2 \times 2 \times 2.525 \times 0.250 \times 0.250 = 0.789 \text{ m}^3$ $0.631 \text{ m}^3$ $3 \times 3.00 \times 0.250 \times 0.250 = 0.563 \text{ m}^3$ $2 \times 2 \times 2.525 \times 0.250 \times 0.150 = 0.379 \text{ m}^3$ $3 \times 3.00 \times 0.250 \times 0.150 = 0.338 \text{ m}^3$ $1 \times 5.10 \times 4.55 \times 0.1025 = 2.900 \text{ m}^3$	7.61 8.246	5665.35	Cum	43113.31 46,716.47

	<p>Concrete with graded stone chips (20 mm nominal size) excluding shuttering in ground floor and foundation. (a) 1:3:6 proportion. PWD Building Works schedule, Page -23, Item -B.1.a, ( Corri. Page- 09, Date-04-06-2018) Rate Analysis1 ( Corri. Page-01, Date-04-06-2018)</p> <p>37.10 X 0.100 = 3.71 M3</p>	3.710	5078.51	m3	18841.27
7	<p>25mm. thick damp proof course with cement concrete with stone chips (1:1.5:3) [with graded stone aggregate 10 mm nominal size] and admixture of water proofing compound as per manufacturer's specification followed by two coat of polymer based paint, (1st coat after 4 to 5 days of concrete laying and 2 nd coat just before brick masonry work) as directed (cost of water proofing compound &amp; polymer based paint to be paid separately).( Chequering not required over concrete or painted surface). [Note: - Waterproofing as per item 9, polymer based paint as per item 8 (a) of subhead C of Section (C). PWD Building Works schedule, Page -47, Item -1 (Rate Analysis) 2 x 5.10 x 0.250 = 2.55 m2 ✓ 3 x 4.55 x 0.250 = 3.41 m2 ✓</p>	5.96	265.95 195.75	Sqm	1585.06 1166.67
8	<p>125 mm brick work with 1st class bricks in cement mortar ( 1:4) in ground floor. PWD Building Works schedule, Page -16, Item-16, cori page -3, date -04.06.2018 (Rate Analysis) 5 x 1.20 x 3.00 = 18.00 m2 ✓ 3 x 1.00 x 3.00 = 9.00 m2 ✓</p>	27.00	697.47	Sq.M.	18831.69
9	<p>Supplying and laying polythine sheet ( 150 gm/sq.m ) over damp proof course or below flooring or roof terracing or foundation or foundation trenches. PWD Building Works schedule, Page -47, Item-3</p>	23.21	24.00	Sq.M.	557.04
10	<p>Hire and labour charges for shuttering with centering and necessary staging upto 4 m using approved stout props and thick hard wood planks of approved thickness with required bracing for concrete slabs, beams and columns, lintels curved or straight including fitting, fixing and striking out after completion of works (upto roof of ground floor) (f) 25 mm to 30 mm shuttering without staging in foundation PWD Building Works schedule, Page -42, Item- 36.f 2 x 2 x 5.10 x 0.250 = 5.10 m2 ✓ 3 x 2 x 4.55 x 0.25 = 6.83 m2 ✓ 6 x 4 x 1.20 x 0.150 = 4.32 m2 ✓</p>	16.25	203.00	Sqm	3298.75

	<p>for shuttering with centering and necessary using approved stout props and thick hard wood of approved thickness with required bracing for concrete slabs, columns, lintels curved or straight including fitting, fixing and raking out after completion of works (upto roof of ground floor) 25 mm to 30 mm thick wooden shuttering as per decision &amp; direction of Engineer-In-Charge.</p> <p>PWD Building Works schedule, Page -42, Item- 36.a</p> <p>1 x 5.10 x 4.55 = 23.21 m2 ✓                  2(5.10 + 4.55) x 0.125 = 2.41 m2 ✓                  6(.30+ .025) x 3.00 = 9.90 m2 ✓                  2 x 2 x 5.1 x 0.1250 = 3.825 m2 ✓                  3x 2 x 4.55 x 0.125 = 3.41 m2 ✓</p>	42.75	321.00	Sqm	13722.75
12	<p>Artificial stone in floor ,dado, staircase etc with cement mortar (1:2:4) with stone chips Isied in panels as directed with topping made with ordinary or white cement (as necessary) and marbel dust in proportion (1:2) in cluding smooth finishing and rounding off corners including raking out joints or roughening of concrete surface and application of cement slurry before flooring works using cement @ 1.75 kg/ sq.m all complete including all materials and labour.</p> <p>In ground floor                  3 mm thick topping using gray cement (ii) 25 mm                  PWD Building Works schedule, p-48 Item 6(ii)                  5.10 x 4.55 = 23.21 m2 ✓</p>	23.21	267.00	Sq.m	6197.07
13	<p>Reinforcement for reinforced concrete work in all sorts of structures including distribution bars, stirrups, binders etc initial straightening and removal of loose rust (if necessary), cutting to requisite length, hooking and bending to correct shape, placing in proper position and binding with 16 gauge black annealed wire at every intersection, complete as per drawing and direction. (a) For works in foundation and upto roof of ground floor/upto 4 m.</p> <p>(i) Tor steel/Mild Steel , JSPL/SWAYN/ELETRO/STEEL                  PWD Building Works schedule, Page - 43, Item - 40.a.i.1( Corri. 10th Page-01, Date-23-01-2020) (Rate Analysis)                  Item no , vol of conc. 7.61 x 1.20 % = 0.0913 m3 x 35.315 c.ft = 3.224 c.ft x 225 kg = 725.40 kg = 0.725 MT ✓                  3.4995 786.2625 0.7863</p>	0.724 0.7863	55179.95	M.T.	39950.28 43,387.99
14	<p>Collapsible gate with 40 mm x 10 mm x 6 mm Tee as top and bottom guide rail , 20 mm x 10 mm x 2 mm vertical channels 100 mm apart in fullt stretched position 20m x 5 mm MS flats as collapsible bracings properly reveted and washered including 38 mm steel roller including locking arrangements , fitted and fixed in position with lugs set in cement concrete including cutting necessary hikes chasing etc in walls , floors etc and making good all damages .</p> <p>PWD Building Works schedule, Page -106, Item- .18                  2 x 1.00 x 2.10 = 4.20 m2 ✓</p>	4.20	4330.00	Sqm	18186.00
15	<p>Brick work with 1st class bricks in cement mortar (1:4)                  (a) Foundation and plinth ground floor                  PWD Building Works schedule, Page -15, Item-7.a (Rate Analysis)</p> <p>2 x 5.10 x 0.250 x 0.600 = 1.53 m3 ✓                  3 x 4.550 x 0.250 x 0.600 = 2.048 m3 ✓                  2 X 2.50 X 0.250 X 0.600 = 0.750 M3 ✓                  2 X 1.00 X 0.500 X 0.300 = 0.300 M3 ✓</p>	3.785 4.628	5339.63	Cu.m	20210.50 24711.81
16	<p>Brick work with 1st class bricks in cement mortar (1:4)                  (b) superstructure ground floor                  PWD Building Works schedule, Page -15, Item-7.b (Rate Analysis)</p> <p>2 x 5.10 x 0.250 x 3.00 = 7.65 m3 ✓                  3 x 4.55 x 0.250 x 3.00 = 10.238 m3 ✓</p>	17.89	5562.63	Cu.m	99515.45

	of concrete surface before taking up Plastering Works schedule, P-192, It-1	23.21	21.00	Sqm	487.41
	Plaster (to wall, floor, ceiling etc.) with sand and cement mortar including rounding off or chamfering corners as directed and raking out joints including throating, nosing and drip course, scaffolding/staging where necessary (Ground floor).[Excluding cost of chipping over concrete surface] (i) With 1:6 cement mortar (c) 15 mm thick plaster PWD Building Works schedule, P-189 It- No. 1 (Rate Analysis) $2(5.1 + 4.55) \times 3.75 = 72.388 \text{ m}^2$ <del>72.388 m<sup>2</sup></del> $2(5.10 + 4.55) \times 3.00 = 57.90 \text{ m}^2$ $3 \times 2 \times 1.00 \times 3.00 = 18.00 \text{ m}^2$ $5 \times 2 \times 1.20 \times 3.00 = 36.00 \text{ m}^2$	184.295	133.53	Sqm	24608.24 27606.29
19	Plaster (to wall, floor, ceiling etc.) with sand and cement mortar including rounding off or chamfering corners as directed and raking out joints including throating, nosing and drip course, scaffolding/staging where necessary (Ground floor).[Excluding cost of chipping over concrete surface] (ii) With 1:4 cement mortar (c) 10 mm thick plaster PWD Building Works schedule, P-189 It- No. 1 (ii)(c) (Rate Analysis) $5.1 \times 4.55 = 23.21 \text{ m}^2$	23.21	120.53	Sqm	2797.50
20	Neat cement punning about 1.5 mm thick in wall ,dado, window sills, floors etc . Note cement 0.152 m <sup>3</sup> /100 m <sup>2</sup> PWD Building Works schedule, P-192 It- No. 15 $2(5.10 + 4.55) \times 0.75 = 14.48 \text{ m}^2$	14.48	32.75	Sq.m	474.22
21	Supplying, fitting and fixing fibre reinforced polymer (FRP) Composite door frame as per approved section with glass fibre reinforced plastic moulded skins and a special sandwich core, so as to impart monolitaheic composite structure as per approved technology of Department of Science and Technology (DST) to satisfy IS: 4020 door testing performance criteria.. (i) 66mm x 90mm PWD Building Works schedule, P-115, It - 3 (i) $4(2 \times 2.10 + 0.75) = 19.80 \text{ M}$	19.80	497.00	Mtr	9840.60
22	Supplying, fitting & fixing fibre reinforced polymer (FRP) Composite door shutters as per approved design with glass fibre reinforced plastic moulded skins and a special sandwich core, so as to impart monolitaheic composite structure as per approved technology of Department of Science and Technology (DST) to satisfy IS:4020 door testing performance criteria. In ground floor. ii) 25 mm thick P-125, It- 14(ii) $4 \times 2.10 \times 0.75 = 6.30 \text{ m}^2$	6.30	2581.00	Sqm	16260.30
23	Anodised aluminium barrel / tower / socket bolt (full covered) of approved manufactured from extruded section conforming to I.S. 204/74 fitted and fixed with cadmium plated screws . (vii) 225mm long x 10mm dia. bolt. PWD Building Works schedule, P-144, It No. 26 (vii)	5.00	84.00	Each	420.00
24	Iron butt hinges of approved quality fitted and fixed with steel screws, with ISI mark. (viii) 100mm X 75mm X 3.50mm. PWD Building Works schedule, P-140, It No. -5 (viii)	15.00	66.00	Each	990.00
5	Anodised aluminium decorative handle (hexagonal / fluted) of approved quality fitted and fixed complete. (i) 150mm plate x 10mm dia rod x 12mm hexagonal/fluted. PWD Building Works schedule, Page -146 . Item no-31,(i)	10.00	87.00	Each	870.00
6	Iron hasp bolt of approved quality fitted and fixed complete (oxidised) with 16mm dia rod with concrete bolt and round fitting. .b)250mm long. PWD Building Works schedule, Page -141 . Item no-10 b)	5.00	159.00	Each	795.00

	<p>laying chequered tiles of any shade and of quality with (1:1.5:3) cement concrete laid in or patterns as directed in pavement, footpath including necessary underlay 25 mm thick (1:3) cement mortar complete in all respect with all labour and materials. ( Using cement slurry @4.4kg/sq.m at back side and @2.4 kg/sq.m for joint filling ). PWD Building Works schedule, Page -74 , Item no- 46(i). 25 mm thick 2 x 2.00 x1.00 = 4.00 m<sup>2</sup></p>	4.00	458.00	sq.m	1832.00
28	<p>Rendering the Surface of walls and ceiling with White Cement base WATER PROOF wall putty of approved make &amp; brand.(1.5 mm thick) In Ground Floor PWD Building Works schedule, PWD, P- 198, 1- 5 <del>184.25</del> + 23.21 = 207.50 m<sup>2</sup></p>	207.50 207.19	122.00	Sqm	25315.00 25313.78
29	<p>Applying interior grade Acrylic Primer of approved quality and brand on plastered and concrete surface old or new surface to receive Distemper Acrylic emulsion paint including scraping and preparing the surface thoroughly , complete as per manufacturer's specification and as per direction of the E-I-C ( Ground Floor ) ( b ) Two Coats PWD Building Works schedule, Page -74 , Item no- 46(i). 57.90 + 28.00 + 36.00 + 23.21 - <del>82.43</del> = 52.68 m<sup>2</sup> 72.375 72.735 m<sup>2</sup></p>	52.68 72.735	44.20	Sqm	2328.46 3219.88
30	<p>Dry Destempering interial walls or ceiling including cleaning, washing, smoothening surface (b) two coats PWD Building Works schedule, Page -196 , Item no- 9(b)</p>	52.68 72.735	49.00	m <sup>2</sup>	2581.32 3564.02
31	<p>Applying exterior grade Acrylic Primer of approved quality and brand on plastered or concrete surface old or new surface to receive Decorative Textured (Martt Finish) or Smooth Finish Acrylic exterior emulsion paint including scraping and preparing the surface thoroughly , complete as per manufacturer's specification and as per direction of the EIC in Ground Floor (b) two coats. PWD Building Works schedule, Page -196 , Item no- 8(b)</p>	72.39 72.735	45.10	m <sup>2</sup>	3264.79 3564.11
32	<p>Protective and Decorative Acrylic Exterior emulsion paint of approved quality, as per manufacturer's specification and as per dirction of EIC to be applied overf Acrylic primer as required. The rate includes cost of materials, labour, scaffolding and all incedental charges but excluding the cost of primer in ground floor (two coats)(a) normal acrylic emulsion. PWD Building Works schedule, Page -197 , Item no- 17(</p>	72.39 72.735	67.00	m <sup>2</sup>	4850.13 4849.12
33	<p>(b) Priming one coat on timber or plastered surface with synthetic oil bound primer of approved quality including smoothening surfaces by sand papering etc. PWD Building Works schedule, Page -200 . Item no- 1 (b)</p>	6.35	38.00	Sqm	241.30

	<p>best quality synthetic enamel paint of approved make and brand including smoothening surface by sand papering etc. including using of approved putty etc. on the surface, if necessary :</p> <p>(b) On steel or other metal surface :</p> <p>(iv) Two coats (with any shade except white)</p> <p>PWD Building Works schedule, Page -200 . Item no- 2(A)(a)(iv)</p>	6.35	81.00	Sqm	514.35
35	<p>(a) M.S.or W.I. Ornamental grill of approved design joints continuously welded with M.S, W.I. Flats and bars of windows, railing etc. fitted and fixed with necessary screws and lugs in ground floor.</p> <p>(i) Grill weighing above 10 Kg./sq.mtr and up to 16 Kg./sq. mtr.</p> <p>PWD Building Works schedule, P-104 Item-13 A (i) (3rd Corrigendam Page No 91)</p> <p><math>2 \times 2.00 \times 0.750 = 3.00 \text{ m}^2</math></p> <p><math>6 \times 0.600 \times 0.600 = 2.16 \text{ m}^2</math></p> <p><math>= 5.16 \text{ m}^2 \times 10,000 \text{ kg} = 51.60 \text{ kg} = 0.516 \text{ qtl}</math></p>	0.516	9888.00	Qntl	5102.21
36	<p>a) Priming one coat on steel or other metal surface with synthetic oil bound primer of approved quality including smoothening surfaces by sand papering etc.</p> <p>PWD Building Works schedule, P/200 Item-1(a)</p>	5.16	29.00	Sqm	149.64
37	<p>(A) Painting with best quality synthetic enamel paint of approved make and brand including smoothening surface by sand papering etc. including using of approved putty etc. on the surface, if necessary :</p> <p>(b) On steel or other metal surface :</p> <p>(iv) Two coats (with any shade except white)</p> <p>PWD Building Works schedule, P-200 Item-2(b)(iv)</p>	5.16	79.00	Sqm	407.64
38	<p>Supplying and laying true to line and level vitrified tiles of approved brand (size not less than 600 mm X 600 mm X 10 mm thick) in floor, skirting etc. set in 20 mm sand cement mortar (1:4) and 2 mm thick cement slurry back side of tiles using cement @ 2.91Kg./sqM or using polymerised adhesive (6 mm thick layer applied directly over finished artificial stone floor/Mosaic etc without any backing course) laid after application slurry using 1.75 Kg of cement per sqM below mortar only, joints grouted with admixture of white cement and colouring Pigment to match with colour of tiles / epoxy grout materials of approved make as directed and removal of wax coating of top surface of tiles with warm water and polishing the tiles using soft and dry cloth upto mirror finish complete including the cost of materials, labour and all other incidental charges complete true to the manufacturer's specification and direction of Engineer-in-Charge. (White cement, synthetic adhesive and grout material to be supplied by the contrr[e])</p> <p>(I) With application slurry @1.75 kg/ Sq.m, 20 mm sand cement mortar (1:4) &amp; 2 mm thick cement slurry at back side of tiles, 0.2 kg/ Sq.m white cement for joint filling with pigment.</p> <p>(A) Deep Colour &amp; White</p> <p>PWD Building Works schedule, Page-66 Item-36 (A) (3rd Floor</p> <p><math>5.10 \times 4.55 = 23.21 \text{ m}^2</math></p>	23.21	1684.00	Sqm	39085.64

Fixing 1st quality Ceramic tiles in walls and floors  
 Existing work & 4 nos. of key stones (10mm) fixed  
 the back of each tile & finishing the joints with white  
 with colouring oxide if required to match the colour of  
 roughening of concrete surface, if necessary or by  
 adhesive & grout materials etc.

40	Supplying profiles of required section made of Aluminium Alloy Extrusions conforming to IS: 732-1983 and IS: 1285-1975; Anodized (with required film thickness and specified colour / natural) matt finished conforming to IS: 1868-1983 for fabrication of composite door, sliding & casement windows, partitions, formed of basic sections of any ISI embossed / certified make and brand as per direction of Engineer - In-Charge. (Payment will be made on finished length of the work). (A) In 10-12 Micron thickness Anodizing film l) Natural white h) Louvered window. j) Top, bottom and side member. PWD Building Works schedule, PWD, P-233, I-1(h) i	8.40	183.00	M	1537.20	
41	ii) Louvered Section.	7.20	658.00	M	4737.60	
42	iii) Cleat angle (Non-anodized).	6.48	263.00	M	1704.24	
43	Supplying bubble free float glass of approved make and brand conforming to IS: 2835-1987. iv) 5mm thick coloured / tinted / smoke glass. PWD Building Works schedule, P-243, I-9	1.08	585.00	Sq.M.	631.80	
44	Painting block letters or digits in Black Japan or any approved paint as per direction. e) Size above 7.5 cm. and upto 10 cm. PWD Building Works schedule, P-268, It-17(e)	450.00	12.00	Each	5400.00	
45	Supplying and planting of different plants / trees (supplying well grown plants bushy and healthy, minimum height as specified i.e. exposed height including all leads and lifts, carriage, handling, manuring applying pesticide and fertilizer etc. i) Furcaria Veriegated 10 to 12 leaves in height 20-30 cm in earthen pot of size 25 cm	10.00	162.00	Each	1620.00	
46	x) Ficus blakii (F. Vivicon) well branched (Bushy) of height 120cm - 135 cm in earthen pot of size 30cm. PWD Building Works schedule, Page -261, It- 9 (x)	3.00	187.00	Each	561.00	
47	xxvi) Areca Palm 4 - 5 suckers of height 90 cm to 105 cm in earthen pots of size 25 cm. PWD Building Works schedule, Page -261, It- 9 (xxvi)	3.00	127.00	Each	381.00	
<b>SANITARY AND PLUMBING WORKS</b>						
48	Supplying, fitting and fixing Anglo-Indian W.C. in white glazed vitreous china ware of approved make complete in position with necessary bolts, nuts etc. a) With 'P' trap (with vent) PWD S&P Schedule, Page-79, Item no-3(a)	4.00	3104.00	Each	12416.00	
49	Supplying, fitting and fixing Closet seat of approved make with lid and C.P. hinges, rubber buffer and brass screws complete. (b) Anglo Indian (i) Plastic (thallow type) White PWD S&P Schedule, page-81, Item no 10.b.i	4.00	<del>380.00</del> 485.00	Each	<del>1520.00</del> 1940.00	

	and fixing flat back urinal (half stall urinal) in white make in position with brass screws on top of approved wooden blocks complete 75 mm X 75 mm X 340 mm 280 mm X 280 mm X 340 mm schedule, page 80, item no-6/(ii)	3.00	945.00	Each	2835.00
	Supplying fitting and fixing squatting plate with integrated flushing in white vitreous set in cement concrete (6:3:1) with jhama chips complete. ( Payment of concrete will be paid seperately ) ( i ) 450 mm x 350 mm	4.00	1015.00	Nos	4060.00
53	Supplying, fitting and fixing 10 litre P.V.C. low-down cistern conforming to I.S. specification with P.V.C. fittings complete, C.I. brackets including two coats of painting to bracket etc. P.W.D S&P Schedule, Page No.-36 Item No.-2,	4.00	155.00	Each	620.00
54	Supplying, fitting and fixing 32 mm dia. Flush Pipe of approved make with necessary fixing materials and clamps complete. i) Polythene Flush Pipe P.W.D S&P Schedule, Page no 81. Item no. 11(i)	2.00	414.00	Each	828.00
55	Supplying, fitting and fixing urinal flush pipe fittings of approved brand. (a) C.P. urinal flush pipe fittings range of one P.W.D S&P Schedule, S. P. 81, item-12/a Supplying, fitting and fixing white vitreous china best quality approved make wash basin with C.I. brackets on 75 mm X 75 mm wooden blocks. C.P. waste fittings of 32 mm dia., mending good all damages and painting the brackets with two coats of approved paint. (ii) 550 mm X 400 mm size P.W.D S&P Schedule, P-41, It 2 (ii)	2.00	2208.00	Each	4416.00
56	Supplying fitting and fixing pedestal of approved make for wash basin ( White ) P.W.D S&P Schedule, P-41, It 3	2.00	1497.00	Each	2994.00
57	Supplying, fitting and fixing approved brand P.V.C. CONNECTOR white flexible, with both ends coupling with heavy brass C.P. nut, 15 mm dia., (iii) 600 mm long P.W.D S&P Schedule, Page No.-43 Item No.-9-iii	5.00	107.00	Each	535.00
58	Supplying, fitting and fixing approved brand 32 mm dia. P.V.C. waste pipe, with PVC coupling at one end fitted with necessary clamps. (iv) 1050 mm long each P.W.D S&P Schedule, Page No.-43 Item No. 10-iv	2.00	91.00	Each	182.00
59	(f) Hand Shower(Health Faucet) with 1mtr Flexible Tube with Wall Hook(Equivalent to Code No.573 & Model -ALLIED of Jaquar or similar), P.W.D S&P Schedule, Page No.-3, Item No.-3f.	5.00	1251.00	Each	6255.00
60	(a) (i) Chromium plated Bib Cock short body (Equivalent to Code No. 511 & Model - Tropical / Sunthing Special of ESSCO or similar brand). P.W.D S&P Schedule, Page No.-6 Item No.-7-a-i	7.00	539.00	Each	3773.00
61	(b) (i) Chromium plated Stop Cock (Equivalent to Code No. 513(A) & 513(B) & Model - Tropical / Sunthing Special of ESSCO or similar P.W.D S&P Schedule, Page No.-6 Item No.-7-b-i	5.00	493.00	Each	2465.00
62	Chromium plated angular Stop Cock with wall flange (Equivalent to Code No. 5053 & Model - Florentine of Jaquar or similar brand). P.W.D S&P Schedule, Page No.-6 Item No.-7-d-i,	5.00	815.00	Each	4075.00





90	Supplying, fitting and fixing towel rail with two brackets. (a) C.P. over brass (ii) 25 mm dia. and 600 mm long Schedule, p No 82 1No- 22 (a)(iii)	PWD S&P	2.00	430.00	Each	860.00	16184.00	16179.00	16179.00
91	Supplying, fitting and fixing bevelled edged mirror 5.5 mm thick silver red as per I.S. 3438 / 1965 together with brass C.P. hinges. (ii) 600 mm X 450 mm P.W.D S&P Schedule, P-81, It-15(ii)		2.00	484.00	Each	968.00	16184.00	16179.00	16179.00
92	Supplying, fitting and fixing soap holder. (b) Fibre glass Sanitary and plumbing work schedule P-82, It-18(b)		4.00	58.00	Each	232.00			
93	Supplying, fitting and fixing glass shelf with aluminium guard rails. (a) Ordinary type with 5.5 mm sheet glass (i) 450 mm X 125 mm Sanitary and plumbing work schedule P-81, It-16(a)(i)		2.00	341.00	Each	682.00			
	Add S.G.S.T. @			9%	RS.	729240.55	742,715.68	66,844.35	
	Add C.G.S.T. @			9%	RS.	65631.65	66,844.35		
	Cost Of Civil Work			1%	RS.	860503.85	76,403.76	8,769.04	
	Add L.W.C. @				RS.	8605.04	86,292.12		
	Total Amount Including Labour, Welfare, Cess.				RS.	869108.89	9,85,167.80		
	Add Contingency @3%				RS.	26073.27	26,292.12		
	Total Amount Including Labour, Welfare, Cess. and contingency				RS.	895182.15	9,11,459.92		
	Say Rs.				RS.	895182.00	9,11,460.00		

RUPEES EIGHT LAKH NINETY FIVE THOUSAND ONE HUNDRED EIGHTY TWO ONLY  
*Nine Eleven four sixty only.*

*Soumen Das*  
 Sub-Assistant Engineer  
 MIDNAPORE MUNICIPALITY

*[Signature]*  
 Chairman  
 Midnapore Municipality

*Somnath*  
 31.07.25

**NOT BE VETTED**  
*[Signature]*

**NOT BE VETTED**  
*[Signature]*

**Junior Engineer**  
 West Midnapore Division  
 M.E. Directorate  
 Govt. of West Bengal

**Assistant Engineer**  
 West Midnapore Division  
 M.E. Directorate  
 Govt. of West Bengal

**Executive Engineer,**  
 West Midnapore Division  
 M.E Directorate  
 Govt. of West Bengal

ESTIMATE FOR THE CONSTRUCTION OF PUBLIC TOILET JORA MASJID,  
BAZAR IN WARD NO-14 UNDER MIDNAPORE MUNICIPALITY. TOILET SEATS -4  
NOS AND URINAL- 5 NOS (NON SCHEDULE WORKES)

Sl. NO	Item Description & Item No.	Quantity	Rate	Unit	Ammount
1	Non Shedule Item Sl. No. 91-106 ( Order as per SUDA) standard plastic dustbin (12lits)	5	350	Each	1750.00
2	Sinage APC based & Reflective vinyl	5	3776	each	18880.00
3	Supplying and fixing sinage with fixing stand post for public toilet for visible to passersby	5	1000	Each	5000.00
4	Glow Sign board Name and contact details of the following are displayed prominently - Toilet Identification number , name of ULB under which jurisdiction toilet is coverwd , ward number and maintanance authority prominently displayed for each toilet block supervisor, supervisor's agency and area sanitary inspector.	1	5000	each	5000.00
5	Installation of Sinage	1	2071	each	2071.00
6	Air freshner(pack of 4nos)	8	216	Each	1728.00
7	Air freshner (Napthaline 250 gm)	5	210	Each	1050.00
8	Supplying paper Napkin	5	50	Each	250.00
9	Supplying Sanitary Napkin ( Whisper or similar make 50 pcs )	4	520	Each	2080.00
10	Harpic (blue 500 ml)	4	300	Each	1200.00
11	Harpic (Red 500 ml)	4	150	Each	600.00
12	Gala double lip floor wiper	4	350	Each	1400.00
13	Colin glass or surface cleaner	2	200	Lit	400.00
14	Muriatic Acid	2	145	Lit	290.00
15	Bleaching powder	4	120	Kg	480.00
16	Dettol ,lifeboy or similar make liquid soap	8	140	Lit	1120.00
17	Rubber hand gloves	6	80	Pair	480.00
18	Double side plastic brush	6	125	Each	750.00
19	Plastic Broom	4	170	Each	680.00
20	SMS/any otherICT based feedback system ( With number displayed on which SMS has to be sent )	1	5000	each	5000.00
21	Mini Tulu Pump	1	4000	each	4000.00
22	supplying roaster /register for keeping account of regular cleanig	3	200	Each	600.00

125 mm bric  
(1.4) in groun  
slipping No. 06  
3 x 4.55 x  
2 x 5.10  
Analysis  
PMD  
(a) pe

1	1000	each	1000.00
		Rs.	55809.00
		Rs.	558.00
		Total	56367.00
		Rs.	1674.00
		TOTAL	58041.00

*Sa*  
**Sub-Assistant Engineer**  
**MIDNAPORE MUNICIPALITY**

*NMC*  
**Chairman**  
**Midnapore Municipality**

*formally -*  
**31-CA-25**

**Junior Engineer**  
**West Midnapore Division**  
**M.E. Directorate**  
**Govt. of West Bengal**

*Deputy Engineer*

**Assistant Engineer**  
**West Midnapore Division**  
**M.E. Directorate**  
**Govt. of West Bengal**

*JMS*  
**11/08/25**  
**Executive Engineer,**  
**West Midnapore Division**  
**M.E. Directorate**  
**Govt. of West Bengal**

**NAME OF WORK:- ESTIMATE FOR ELECTRICAL WORK OF 4 SEATED PUBLIC TOILET AT  
NEAR JORA MASJID IN WARD NO.-14 UNDER MIDNAPORE MUNICIPALITY OF WEST BENGAL**

**(MODEL NO - G)  
[ASPIRATIONAL PARAMETER]**

\* As per PWD & I & WD schedule 3% & 2% district charges applicable on PWD & I & WD schedule items

\* No district charges will be applicable on non-schedule items

SI No.	Iteam Description	Unit	Quantity	Rate	Amount
1	<p>Distribution wiring in 2 x 22/0.3 (1.5 sqmm) single core stranded 'FR' PVC insulated &amp; unsheathed copper wire (Brand approved by EIC) in 20mm size PVC rigid conduit 'FR' (<b>Precision make</b>), with 1x22/0.3 (1.5 sqmm) single core stranded 'FR' PVC insulated &amp; unsheathed copper wire for ECC, to light/fan/call bell points with Piano Key type switchfixed on MS CRC sheet metal (16 SWG) switch board cum JB on wall complete with 2 no. suitable size "Ph &amp; N" copper bar incl. bakelite/Perspex (wall matching color) top cover 3 mm thick and incl. 175mmx100mmx65mm inspection box, making earthing attachment, painting the MS box and mending good the damages to original finish. [PWD Schedule Page No-E-14 Iteam No-2a]</p> <p>Average run 5 mtr</p>	Point	17	630.36	10716.12
2	<p>Distribution wiring in 1.1 KV grade 22/0.3 (1.5 sqmm) single core stranded 'FR' PVC insulated &amp; unsheathed copper wire (Brand approved by EIC) in 20mm size PVC rigid conduit 'FR' (<b>Precision make</b>), with 1.1 KV grade 1 x 22/0.3 (1.5 sqmm) single core stranded 'FR' PVC insulated &amp; unsheathed copper wire as ECC, to 5A 3 pin flush type plug socket &amp; Piano Key type switch fixed on MS CRC sheet metal (16 SWG) switch board cum JB on wall incl. bakelite/Perspex (wall matching color) top cover 3 mm thick and incl. painting the MS box and mending good the damages to original finish <b>On Board (only for pay counter)</b> [PWD Schedule Page No-E-15; I-4a]</p>	Point	2	69.01	138.02

3	Supplying and fixing 240V 32A Double Pole AC Type 30mA RCCB.(Complete Set) (ISI marked) [ <b>Make-Legrand</b> ] (Cat No 4113/95) [ <b>Legrand Page No-92</b> ]	Nos	1	5942.00	5942.00
4	Distribution wiring in 1.1 KV single core stranded 'FR' PVC insulated & unsheathed copper wire (Brand approved by EIC) in 20mm size PVC rigid conduit 'FR' ( <b>Precision make</b> ) incl. necy. fittings as required 2 x 36/0.3 (2.5 sqmm) + 1 x 22/0.3 (1.5 sqmm) ECC [ <b>PWD Schedule Page No-E-14 Iteam No-1a(ii)</b> ]	mtr	17	122.57	2083.69
5	Supplying and fixing double-door SPN MCB Distribution Board with IP-42/43 protection, concealed in wall after cutting the wall & mending good the damages to original finish incl. Inter connection with suitable size of copper wire and neutral link & provision for earthing attachment. <b>a) For (2+4 way) (Make -Havells)</b> [ <b>PWD Schedule Page No-D-9;Iteam No-13</b> ]	No	1	963.05	963.05
6	Supplying and fixing 240/415 V MCB of Breaking capacity 10kA & C characteristics on din rail of existing DBs and necessary connection 6-32A SP MCB ( <b>Make -Havells</b> ) [ <b>PWD Schedule Page No-D-6;Iteam No-7</b> ]	Nos	4	173.04	692.16
7	Supplying and fixing 240/415 V MCB Isolator on din rail of existing DBs and necessary connection. 40A DP MCB Isolator ( <b>Make -Havells</b> ) [ <b>PWD Schedule Page No-D-5;Iteam No-6</b> ]	Nos	1	214.24	214.24
8	Supply of TMC501 conventional industrial batten ( <b>Philips make</b> ) LED Tube,model no- TMC501 P1xT-LED 22W P3241 ( <b>WB I &amp; WD schedule P-113, I- 5:3 F.22</b> )	Nos	4	460.02	1840.08
9	Fixing only single/twin flurosent light fitting complete with all accessories directly on wall/ceiling by screws etc.. [ <b>PWD Schedule Page No-C-2;Iteam No-14a</b> ]	Nos	4	88.58	354.32
10	Supply & fixing Bulk head light fittings with die cast aluminium housing frosted/clear glass on wall/ceiling incl S/F 9 watt LED Lamp complete set. [ <b>Make - Havells</b> ] ( <b>PWD sch - Page--D-13, I-23</b> )	Nos	6	671.37	4028.22
11	Supply & fixing smart bright street light complete with all accessories to be fixed from the wall of building or on pole incl. making holes /providing clamping arrangement & necy. GI reducer as required.S&F 40 mm GI Pipe 1.5 mtr average length & s&f necy length of 1.5 sqmm pvc insulated single core copper wire & making connections as required & mending good damages incl wall paingting. ( <b>30 Watt</b> ) ( <b>Make - Bajaj</b> ) [ <b>WB I&amp;WD sch P-111, I-f.9.0.2</b> ]	Nos	1	3076.32	3076.32

12	Supply of 9" domestic metal exhaust fan 9" (225mm)SWEEP. TRANS AIR - ( Make-Crompton/Havells/Bajaj ) (UD & MA schedule P-14, I-5))	Nos	4	1863.00	7452.00
13	Fixing only exhaust fan after making hole in wall and making good damages and smooth cement finish etc. as practicable as possible and providing necy. length of PVC insulated wire and making connection for exhaust of following diameter: 22.5 cm ( 9" ) [PWD Schedule Page No-C-4;Iteam No-28(b)]	Nos	4	254.41	1017.64
14	Fixing only louver shutter/cowl on wall with necy. bolts & nuts (6 mm dia x 62 mm long) For 22.5 cm(9") Exhaust fan [PWD Schedule Page No-C-4;Iteam No-30(b)]	Nos	4	84.46	337.84
15	Supply of 240V A.C Ceiling Fan ( 48" sweep,1200 mm complete) [Make-Crompton [ for counter only ] (UD & MA schedule P- 23, I- 70)	Each	1	2283.00	2283.00
16	Fixing only Ceiling Fan [PWD sch P- C-3, I-21(a)]	Each	1	67.98	67.98
17	Supply & Fixing 240 V, 16/20 A Piano key type switch (Brand approved by EIC) on sheet metal switch board incl. S & F 100x100x65mm MS (16SWG) switch board and bakelite/perspex top cover of 3mm thick by Brass screws after making housing for switch by cutting bakelite/perspex cover and making necessary connections as required. (For Hand Dryer machine) [PWD sch P- E-6, I-17(b)]	Each	2	207.03	414.06
18	S/F 240V 25A Modular type starter (brand approved by EIC)with 25 A. Modular switch DP MCB (C-Curve)and 4 Module G.I. Modular type switch board with 4 Module Top Cover Plate flushed in wall incl. S/F switch board and Cover Plate and making necy. Connections with PVC Copper wire and earth connectivity wire etc. as per schedule [for Pump] [PWD Schedule Page No-E-19, Item No-17] (Please follow in details)	Nos	1	807.52	807.52
19	Supply and Fixing of 2 mm Polyvinyl glow sign board made of 22 SWG GI sheet box with 1"X1" aluminum channel for fixing the vinyl board after necessary cutting the letter as required & s/f LED tube light fittings along with all accessories. (16 sqft @495.00/sqft) (UD & MA schedule P-14, I-4)	Nos	1	7920.00	7920.00

20	Earthing installation by GI earth Spike (1830 X 20 mm) including 8SWG GI EarthWire & GI nuts, bolts, washer etc.	Nos	1	450.00	450.00
Total					50798.26
Add 18% GST					9143.69
Total With GST					59941.95
Cess@1%					599.42
total					60541.37
Contingency@3%					1798.26
Total					62339.62
Say Rs.					62340.00
(RUPEES SIXTY TWO THOUSAND THREE HUNDRED FORTY ONLY.)					
Service Connection Charges as per Quotation					

Say Rs. 62,340.00

*[Signature]*  
Executive Officer  
Midnapore Municipality

*[Signature]*  
Chairman  
Midnapore Municipality

Technically Vetted Rs. 62,340.00

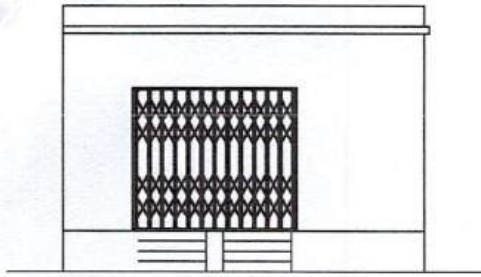
(Rupees Sixty Two Thousand Three Hundred forty only.)

*[Signature]*  
07.07.25  
Junior Engineer  
Electrical & Mechanical Division  
SUDA

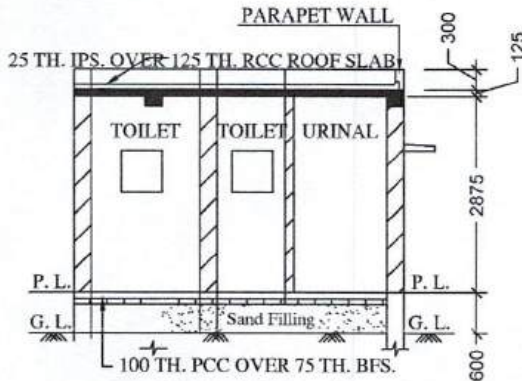
*[Signature]*  
9.7.25  
ASSISTANT ENGINEER  
ELECTRICAL & MECHANICAL DIVISION  
SUDA

*[Signature]*  
9/7/25  
Executive Engineer (E/M)  
O/O the Secretary M.E. Dte.  
Government of West Bengal

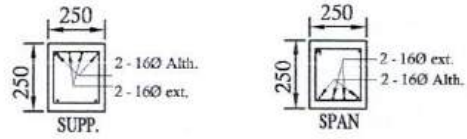
DRAWING FOR THE CONSTRUCTION OF P.T. AT JORA MASJID  
 IN WARD NO-14 WITHIN MIDNAPORE MUNICIPALITY  
 TOILET SEATS 4 Nos URINAL 5 Nos  
 MODLE NO.- G



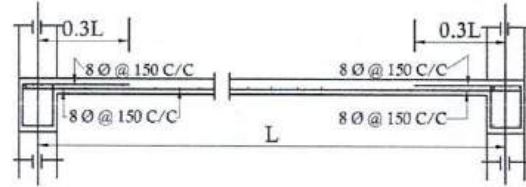
FRONT ELEVATION



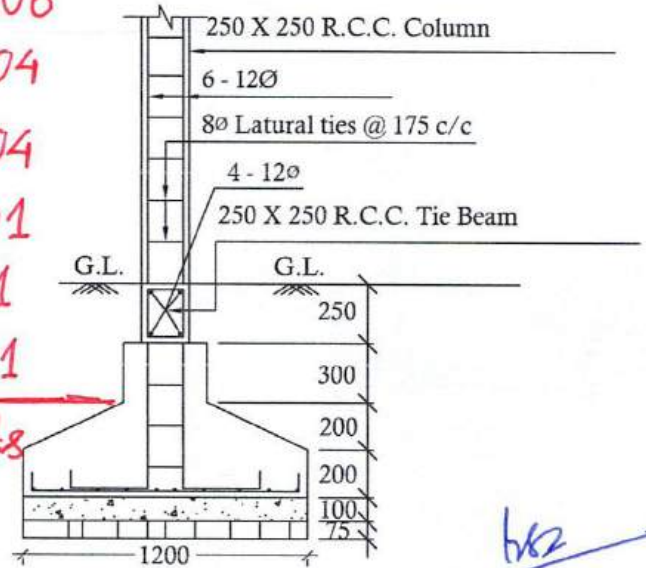
SECTION - 'A - A'



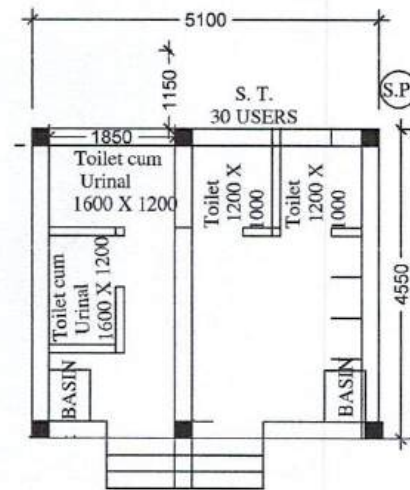
Details Of R.C.C Roof Slab & Beam  
 (SCALE - 1 : 25)



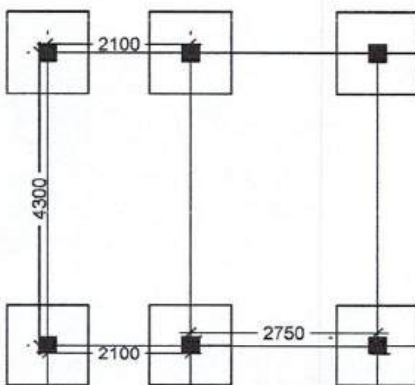
BHLP → 06  
 TL → 04  
 EF → 04  
 CF → 01  
 OL → 01  
 GSB → 01  
 17 pts



DETAILS OF R. C. C COLUMN  
 (SCALE - 1 : 25)



PLAN



LAYOUT PLAN

*h/2*  
 Executive Officer  
 Midnapore Municipality

*Sanku*  
 Chairman  
 Midnapore Municipality