

**OFFICE OF THE BOARD OF COUNCILLOR
KANCHRAPARA MUNICIPALITY**

42, Netaji Subhas Path, Kanchrapara, North 24 Parganas.

Name of work - Estimate of non schedule work for Construction Community Toilet (Toilet seats.-3nos & Urinal.-5nos) at Kanchrapara Shree Mandhari Primary School, Ward No- 15 under Kanchrapara Municipality of West Bengal (Model - ULB).

Sl. No.	Description of Works	Unit	Total Qty	Rate	Amount (Rs.)
NON SCHEDULE WORKS					
1	Standard plastic dustbin (12lits)	Each	5	350	1,750.00
2	Sinage APC based & Reflective vinyl	Each	5	3776	18,880.00
3	Supplying and fixing sinage with fixing stand post for public toilet for visible to passersby	Each	5	1000	5,000.00
4	Glow Sign board Name and contact details of the following are displayed prominently - Toilet Identification number , name of ULB under which jurisdiction toilet is coverwd , ward number and maintainance authority prominently displayed for each toilet block supervisor, supervisor's agency and area sanitary inspector.	Each	1	5000	5,000.00
5	Installation of Sinage	Each	1	2071	2,071.00
6	Air freshner(pack of 4nos)	Each	8	216	1,728.00
7	Air freshner (Napthaline 250 gm)	Each	5	210	1,050.00
8	Supplying paper Napkin	Each	5	50	250.00
9	Supplying Sanitary Napkin (Whisper or similar make 50 pcs)	Each	4	520	2,080.00
10	Harpic (blue 500 ml)	Each	4	300	1,200.00
11	Harpic (Red 500 ml)	Each	4	150	600.00
12	Gala double lip floor wiper	Each	4	350	1,400.00
13	Colin glass or surface cleaner	Lit	2	200	400.00
14	Muriatic Acid	Lit	2	145	290.00
15	Bleaching powder	Kg	4	120	480.00
16	Dettol ,lifeboy or similar make liquid soap	Lit	8	140	1,120.00
17	Rubber hand gloves	Pair	6	80	480.00
18	Double side plastic brush	Each	6	125	750.00
19	Plastic Broom	Each	4	170	680.00
20	SMS/any otherICT based feedback system (With number displayed on which SMS has to be sent)	Each	1	5000	5,000.00
21	Mini Tulu Pump	Each	1	4000	4,000.00
22	supplying roaster /register for keeping acoount of regular cleanig	Each	3	200	600.00
23	Lettering on Toilet Wall for display of name and contact details of ULB ward number and name of maintainance authority , saniinspector, etc.	Each	1	1000	1,000.00
Total Cost = Rs.					55,809.00
Add Provision for GST @ 18% =					10,045.62
Amount including GST =					65,854.62
Add Labour welfare Cess @1% =					658.55
Amount including GST & Cess =					66,513.17
Add Contingency @ 3% =					1,975.64
Grand Total =					68,488.80
Say =					68,489.00

Basirhat
17/07/2025
Junior Engineer
Basirhat Sub-Division, M.E. Dte.
Municipal Engineering Directorate
Deptt. of U.D. & M.A.
Government of West Bengal

Basirhat
18/07/25
Assistant Engineer (Civil)
North 24-Parganas Division, M.E.Dte.
Deptt. of U.D & M.A
Govt. of West Bengal

Rs. 1674.27
Rs. 57,483.27
Rs. 57,483.00

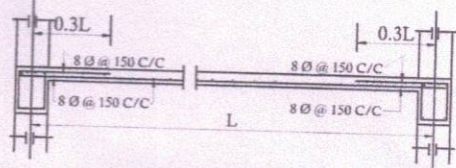
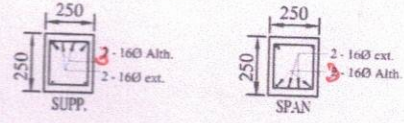
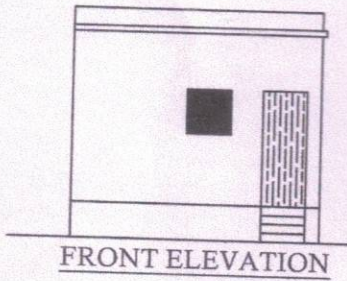
(Rupees sixty eight thousand four hundred eighty nine only)

Basirhat
18.06.25
Sub Assistant Engineer
Kanchrapara Municipality

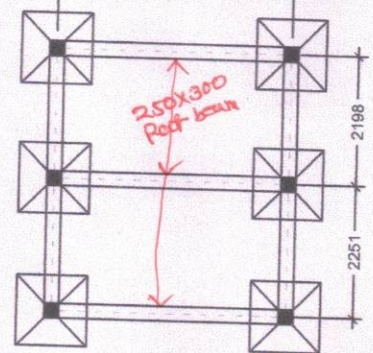
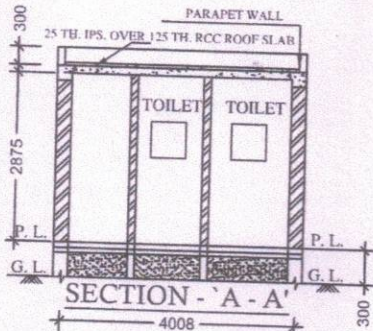
Basirhat
19.06.25
Assistant Engineer
Kanchrapara Municipality

Basirhat
Chairman
Kanchrapara Municipality

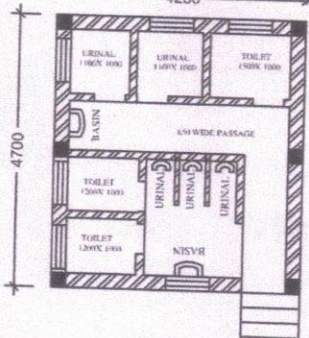
DRAWING FOR CONSTRUCTION OF TOILET BLOCK
 AT KANCHRAPARA SHREE MANDHARI PRIMARY
 SCHOOL WARD NO-15, UNDER KANCHRAPARA
 MUNICIPALITY
 MODEL-ULB
 (TOILET SEAT- 3 NOS, URINAL -5 NOS)



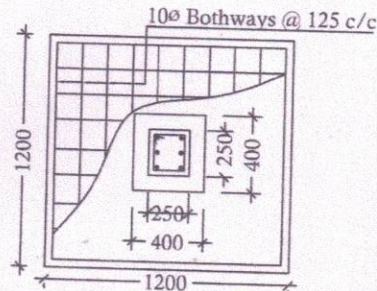
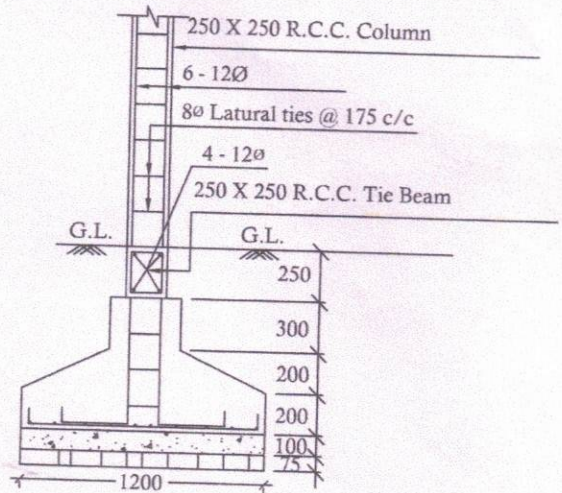
Details Of R.C.C Roof Slab & Beam(Exiting)
 (SCALE - 1 : 25)



LAYOUT PLAN



PLAN



DETAILS OF R. C. C COLUMN(EXISTING)
 (SCALE - 1 : 25)

PRODUCED BY AN AUTODESK EDUCATIONAL PRODUCT

Sub Assistant Engineer
 Kanchrapara Municipality

Assistant Engineer
 Kanchrapara Municipality

Chairman
 Kanchrapara Municipality

FOR OFFICE USE ONLY