

SI.N	Item Description & Item No.	Quantity	Rate	Unit	Amount
93	Supplying, fitting and fixing glass shelf with aluminium guard rails. (a) Ordinary type with 5.5 mm sheet glass (i) 450 mm X 125 mm Sanitary and plumbing work schedule P-81, It-16(a)(i)	2.00	341.00	Each	682.00
				<b>Total Rs.</b>	<b>794287.14</b>
				<b>Add : G.S.T-@18%</b>	<b>Rs. 142971.69</b>
				<b>Cost of Civil Work</b>	<b>Total Rs. 937258.83</b>
				<b>Add: Labour Welfare Cess-@ 1%</b>	<b>Rs. 9372.59</b>
				<b>Add: Contingency-@ 3%</b>	<b>Rs. 28117.76</b>
				<b>Total Amount Including L.W.C &amp; Contingency</b>	<b>Total Rs. 974749.18</b>
				<b>Say Rs.</b>	<b>974749.00</b>

### PART - B (NON-SCHEDULE ITEMS)

#### MODEL NO - A NON SCHEDULE WORKS

94	Non Shedule Item Sl. No. 91-106 ( Order as per SUDA) standard plastic dustbin (12lits)	5	350	Each	1750.00
95	Sinage APC based & Reflective vinyl	5	3776	each	18880.00
96	Supplying and fixing sinage with fixing stand post for public toilet for visible to passersby	5	1000	Each	5000.00
97	Glow Sign board Name and contact details of the following are displayed prominently - Toilet Identification number , name of ULB under which jurisdiction toilet is coverwd , ward number and mantanance authority prominently displayed for each toilet block supervisor, supervisor's agency and area sanitary inspector.	1	5000	each	5000.00
98	Installation of Sinage	1	2071	each	2071.00
99	Air freshner(pack of 4nos)	8	216	Each	1728.00
100	Air freshner (Napthaline 250 gm)	5	210	Each	1050.00
101	Supplying paper Napkin	5	50	Each	250.00
102	Supplying Sanitary Napkin ( Whisper or similar make 50 pcs )	4	520	Each	2080.00
103	Harpic (blue 500 ml)	4	300	Each	1200.00
104	Harpic (Red 500 ml)	4	150	Each	600.00
105	Gala double lip floor wiper	4	350	Each	1400.00
106	Colin glass or surface cleaner	2	200	Lit	400.00
107	Muriatic Acid	2	145	Lit	290.00
108	Bleaching powder	4	120	Kg	480.00
109	Dettol ,lifeboy or similar make liquid soap	8	140	Lit	1120.00
110	Rubber hand gloves	6	80	Pair	480.00
111	Double side plastic brush	6	125	Each	750.00
112	Plastic Broom	4	170	Each	680.00
113	SMS/any otherICT based feedback system ( With number displayed on which SMS has to be sent )	1	5000	each	5000.00
114	Mini Tulu Pump	1	4000	each	4000.00




SI.N	Item Description & Item No.	Quantity	Rate	Unit	Ammount
115	supplying roaster /register for keeping acoount of regular cleanig	3	200	Each	600.00
116	Lettering on Toilet Wall for display of name and contact details of ULB ward number and name of maintainance authority , saniinspector, etc.	1	1000	each	1000.00
				<b>Total Rs.</b>	<b>55809.00</b>
	<b>Add: Labour Welfare Cess-@ 1%</b>			<b>Rs</b>	<b>558.09</b>
	<b>Add: Contingency-@ 3%</b>			<b>Rs</b>	<b>1674.27</b>
	<b>Total Amount Including L.W.C &amp; Contingency</b>			<b>Total Rs.</b>	<b>58041.36</b>
				<b>Say Rs.</b>	<b>58041.00</b>
	<b>PART- A TOTAL AMOUNT</b>			<b>Rs</b>	<b>974749.00</b>
	<b>PART- B TOTAL AMOUNT</b>			<b>Rs</b>	<b>58041.00</b>
	<b>GRAND TOTAL</b>			<b>Rs</b>	<b>1032790.00</b>

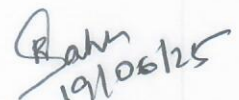
Necessary NOC should be taken from respective land woner for public use of C.T./P.T.

  
Sub. Assistant Engineer  
North Dum Dum Municipality

  
Assistant Engineer  
North Dum Dum Municipality

  
Chairman  
North Dum Dum Municipality

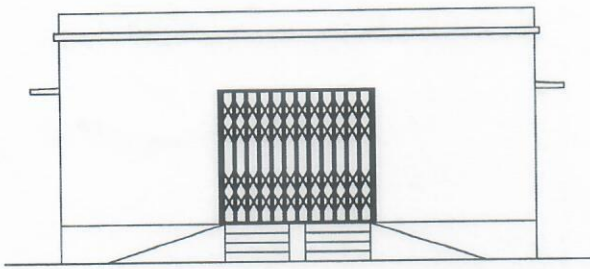
  
Junior Engineer (Civil)  
North 24-Parganas Division, M.E.Dte.  
Deptt. of U.D & M.A  
Govt. of West Bengal

  
Assistant Engineer (Civil)  
North 24 Pgs Divn., M.E.Dte

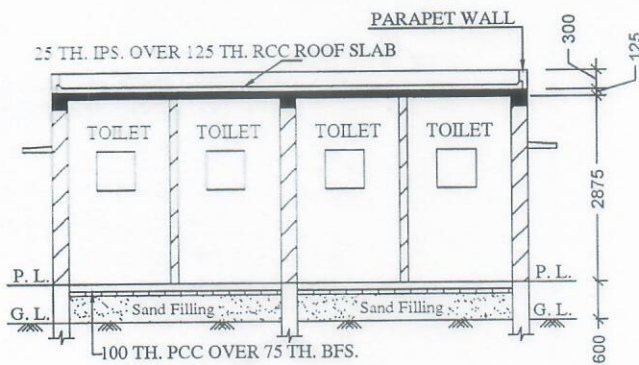
  
Executive Engineer  
North 24 Pgs Divn. M.E.Dte



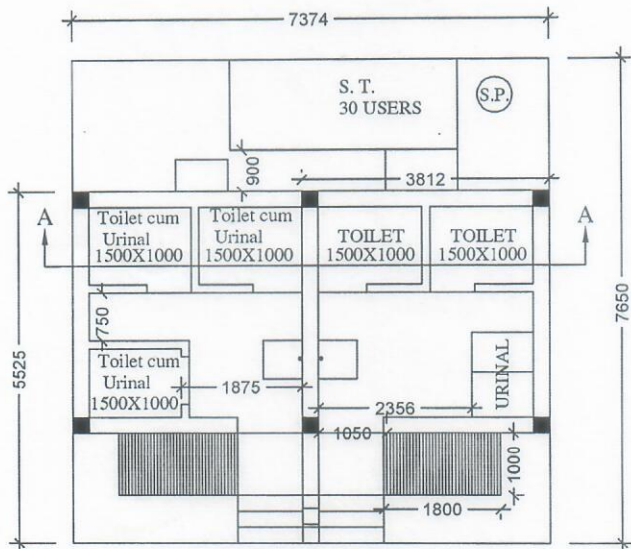
MODEL DRAWING FOR CONSTRUCTION OF C. T./P.T  
 Toilet Seats - 5 Nos Urinal 5 Nos  
 MODEL NO. - A



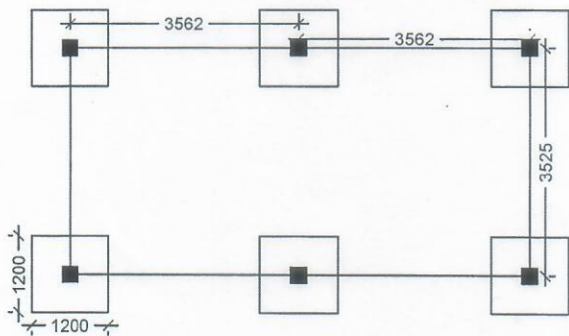
FRONT ELEVATION



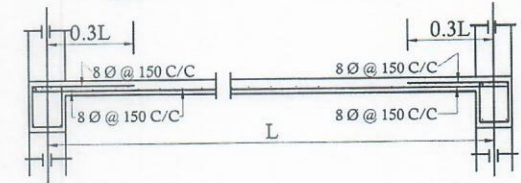
SECTION - 'A - A'



PLAN

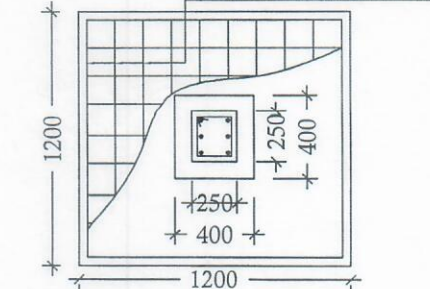
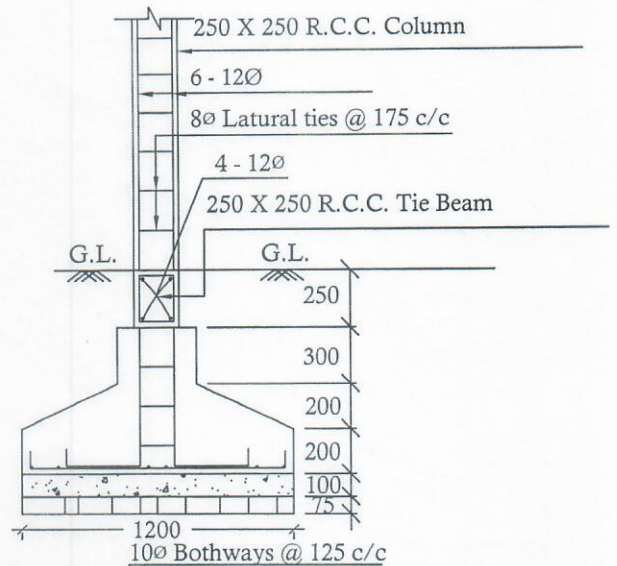


LAYOUT PLAN



Details Of R.C.C Roof Slab & Beam

(SCALE - 1 : 25)



DETAILS OF R. C. C COLUMN

(SCALE - 1 : 25)



Sub. Assistant Engineer Assistant Engineer Chairman  
 North Dum Dum Municipality North Dum Dum Municipality North Dum Dum Municipality