

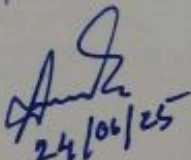
**CONSTRUCTION OF TOILET BLOCK (CT/PT) AT HINDU LINE(PART-1) IN WARD NO 09 UNDER  
CHAMPDANY MUNICIPALITY MODEL NO - A NON SCHEDULE WORKS**

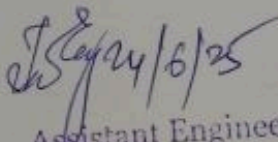
SL.NO	Item Description & Item No.	Quantity	Rate	Unit	Amount
1	Non Shedule Item Sl. No. 91-106 ( Order as per SUDA) standard plastic dustbin (12lits)	5 ✓	350 ✓	Each	1750.00 ✓
2	Sinage APC based & Reflective vinyl	5 ✓	3776 ✓	each	18880.00 ✓
3	Supplying and fixing sinage with fixing stand post for public toilet for visible to passersby	5 ✓	1000 ✓	Each	5000.00 ✓
4	Glow Sign board Name and contact details of the following are displayed prominently - Toilet Identification number , name of ULB under which jurisdiction toilet is coverwd , ward number and maintainance authority prominently displayed for each toilet block supervisor, supervisor's agency and area sanitary inspector.	1 ✓	5000 ✓	each	5000.00 ✓
5	Installation of Sinage	1 ✓	2071 ✓	each	2071.00 ✓
6	Air freshner(pack of 4nos)	8 ✓	216 ✓	Each	1728.00 ✓
7	Air freshner (Napthaline 250 gm)	5 ✓	210 ✓	Each	1050.00 ✓
8	Supplying paper Napkin	5 ✓	50 ✓	Each	250.00 ✓
9	Supplying Sanitary Napkin ( Whisper or similar make 50 pcs )	4 ✓	520 ✓	Each	2080.00 ✓
10	Harpic (blue 500 ml)	4 ✓	300 ✓	Each	1200.00 ✓
11	Harpic (Red 500 ml)	4 ✓	150 ✓	Each	600.00 ✓
12	Gala double lip floor wiper	4 ✓	350 ✓	Each	1400.00 ✓
13	Colin glass or surface cleaner	2 ✓	200 ✓	Lit	400.00 ✓
14	Muriatic Acid	2 ✓	145 ✓	Lit	290.00 ✓
15	Bleaching powder	4 ✓	120 ✓	Kg	480.00 ✓
16	Dettol ,lifeboy or similar make liquid soap	8 ✓	140 ✓	Lit	1120.00 ✓
17	Rubber hand gloves	6 ✓	80 ✓	Pair	480.00 ✓
18	Double side plastic brush	6 ✓	125 ✓	Each	750.00 ✓
19	Plastic Broom	4 ✓	170 ✓	Each	680.00 ✓
20	SMS/any otherICT based feedback system ( With number displayed on which SMS has to be sent )	1 ✓	5000 ✓	each	5000.00 ✓
21	Mini Tulu Pump	1 ✓	4000 ✓	each	4000.00 ✓
22	supplying roaster /register for keeping acoount of regular cleanig	3 ✓	200 ✓	Each	600.00 ✓

23	Lettering on Toilet Wall for display of name and contact details of ULB ward number and name of maintenance authority, saniinspector, etc.	1	1000	each	1000.00 ✓
				Rs.	55809.00 ✓
	Add for Labour welfare Cess @ 1 %			Rs.	558.00 ✓
			Total	Rs.	56367.00 ✓
	Add for Contingency @ 3 %			Rs.	1674.00 ✓
			<b>TOTAL</b>	<b>Rs.</b>	<b>58041.00 ✓</b>

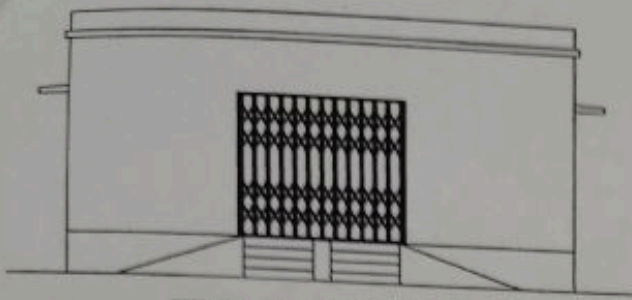
  
**Assistant Engineer**  
 Champdany Municipality

  
**Chairman**  
**CHAMPDANY MUNICIPALITY**

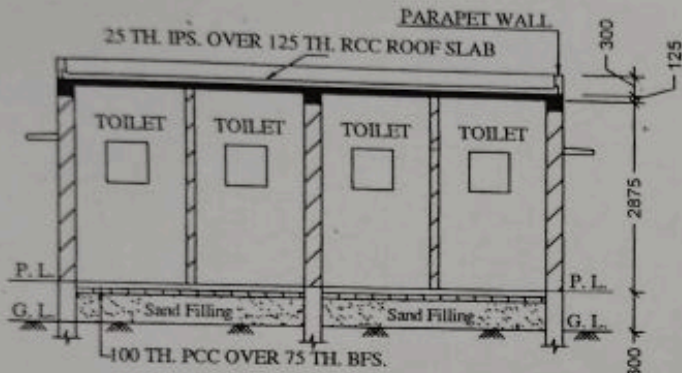
  
 24/06/25  
**Junior Engineer (Civil)**  
 Hooghly Division  
 M.E. Directorate, Deptt. of U.D. & M.A.  
 Govt. of West Bengal

  
 24/6/25  
**Assistant Engineer**  
 Hooghly Division, M.E. Dte.  
 Deptt. of U.D. & M.A.  
 Govt. of West Bengal

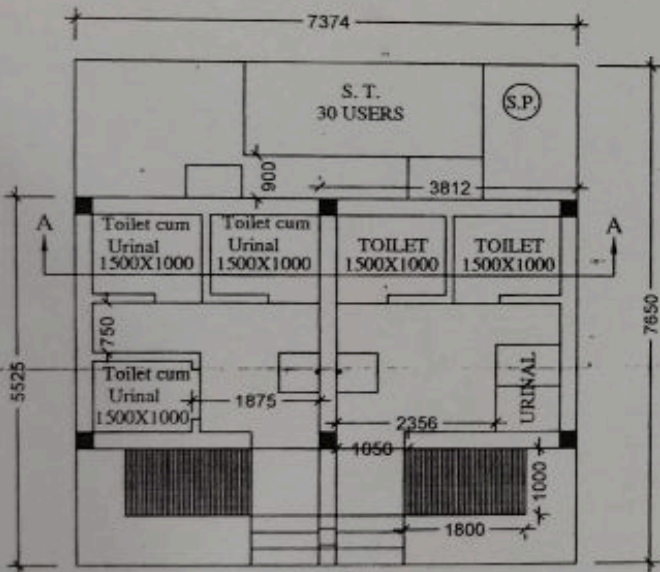
MODLE DRAWING FOR CONSTRUCTION OF C. T./P.T.  
 Toilet Seats - 5 Nos Urinal 5 Nos  
 MODLE NO.- A



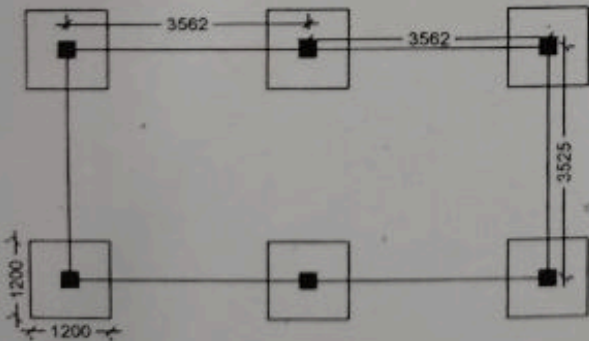
FRONT ELEVATION



SECTION - 'A - A'



PLAN

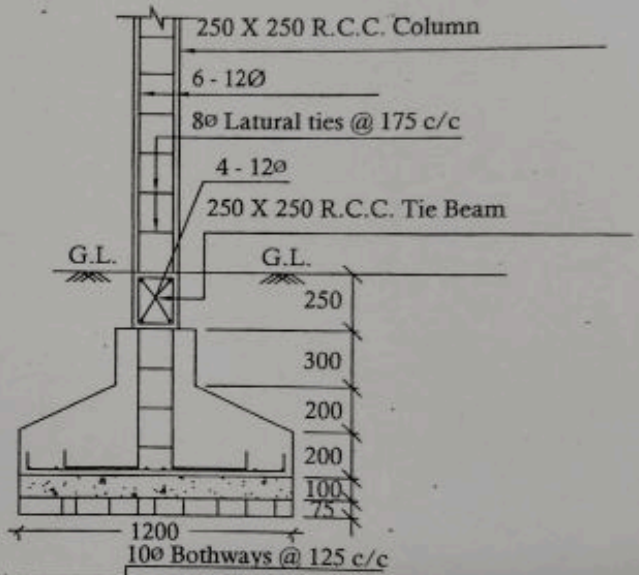


LAYOUT PLAN



Details Of R.C.C Roof Slab & Beam

(SCALE - 1 : 25)



DETAILS OF R. C. C COLUMN

(SCALE - 1 : 25)

*[Signature]*  
 Assistant Engineer  
 Champdany Municipality

*[Signature]*  
 Chairman  
 CHAMPDANY MUNICIPALITY