

Analysis of Rate of Ordinary Cement Concrete (ANNEXURE - II,FORMAT-A)
for
KATWA MUNICIPALITY

NAME OF DISTRICT=		Purba Bardhaman/Paschim Bardhaman		CONCRETE PROPORTION=		1:1½:3		
Description of Items:-							Total Rs./cum.	
step-1	Rate of item as per relevant section of PWD Bldg. Schedule [It. - 10, vide p-13(3rd corrigenda)]					Rs	4,243.00	
step-2	Cost of Stone aggregate of diff. grading at nearest RLY. Ward as per (Table - 1 , P-308/309) (Consumption required for one cum of Concrete vide P-B60, sl no-3.)	20 mm	0.573 cum.	Rs	1,156.00	Rs	662.39	
		10 mm	0.287 cum.	Rs	1,025.00	Rs	294.18	
step-3	Cost of Carriage of Stone aggregate as per consumption required for one cum concrete as per (Table-2, P-310)	20 mm	0.573 cum.	Rs	648.50	Rs	371.59	
		10 mm	0.287 cum.	Rs	648.50	Rs	186.12	
step-4	Cost of Loading & unloading of stone aggregate bellow 40 mm nominal size. (Table -3, P-311)			0.860 cum.	Rs	58.00	Rs	49.88
Rate of 1:1½:3 Concrete per CU.M.=							Rs	5,807.16
Burdwan In.	rail yard to Work Site distance=		60	KM				
carriage	Cost/KM		Total					
0-5	124		Rs	124.00				
5 to 10	10.9		Rs	54.50				
10 to 20	10.1		Rs	101.00				
20 to 50	9.5		Rs	285.00				
50 to 100	8.4		Rs	84.00				
>100	7.9		Rs	-				
Total cost of carriage=			Rs	648.50				
CONTRACTOR SUPPLY (P-305), Annexure-1,Format-A(6th Corrigenda)								
		Quantity		Rs. /MT	Total Rs./cum.			
Rate as per schedule=		cum	MT	South Bengal	Rs	5,807.16		
Deduction of cost of cement		0.286	0.4118	Rs.	6,289.00	Rs.	-2,589.81	
Add cost of cement		0.286	0.4118	Rs.	5,717.00	Rs.	2,354.26	
				TOTAL=	Rs.			5,571.61

Shoff
Sub-Assistant Engineer
Katwa Municipality

Bpud
Assistant Engineer
Katwa Municipality

[Signature]
Chairman
Katwa Municipality

**Analysis of Rate of Reinforcing Steel Supplied by Contactor
(Annexure -1, Format-B) for
Katwa Municipality**

NAME OF DISTRICT=	Bardhaman	TYPE OF STEEL=	OTHER MANUFACTURERS NOT SPECIFIED	
GRADE OF STEEL=	Fe-415			
Description of Items:-		M.F	COST	AMOUNT/MT
step-1	Rate of item as per relevant section of PWD Bldg. Schedule. = [It no- 40.a.i (page-44)]	1.00	58515	Rs. 58,515.00
step-2	Deduct issue rate (per MT) of respective quality of Steel including 10% contractor profit, 2% sundries, water charges & 5% wastages X1.17=	1.17	-41589	-Rs. 48,659.13
step-3	Add basic price at outlet of steel of respective quality of Steel including 10% contractor profit, 2% sundries, water charges & 5% wastages X1.17=	1.17	36750	Rs. 42,997.50
step-4	Cost of carriage frrom outlet to site for 1.05 of steel= (Table-1, P-230, R&B)	1.05	Rs 707.50	Rs. 742.88
step-5	Cost of loading unloading charges for 1.05 of steel= (Chapter-1, 1.03_h, P-228, R&B)	1.05	72	Rs. 75.60

TOTAL= Rs. 53,671.85

kolkata	outlet to Work Site distance=	110
carriage	Csot/KM	Total
0-5	82	Rs 82.00
5 to 10	7.3	Rs 36.50
10 to 20	6.7	Rs 67.00
20 to 50	6.3	Rs 189.00
50 to 100	5.6	Rs 280.00
>100	5.3	Rs 53.00
Total cost of carriage=		Rs 707.50

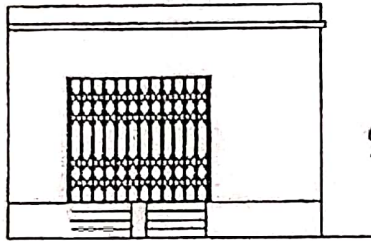
[Signature]
Sub-Assistant Engineer
Katwa Municipality

[Signature]
Assistant Engineer
Katwa Municipality

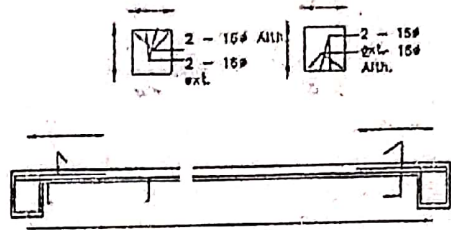
[Signature]
Chairman
Katwa Municipality



MODEL DRAWING FOR CONSTRUCTION OF C. T./P.T.
 TOILET SEATS 4 Nos URINAL 5 Nos
 MODEL NO.- G



FRONT ELEVATION



Details Of R.C.C Roof Slab & Beam
 (SCALE - 1 : 25)

BULK HEAD LIGHT → 06

TUBE LIGHT → 04

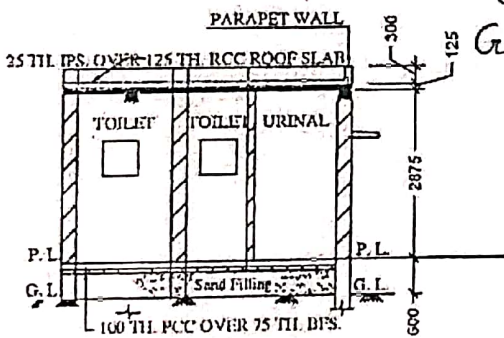
EXHAUST FAN → 03

OUTDOOR LIGHT → 01

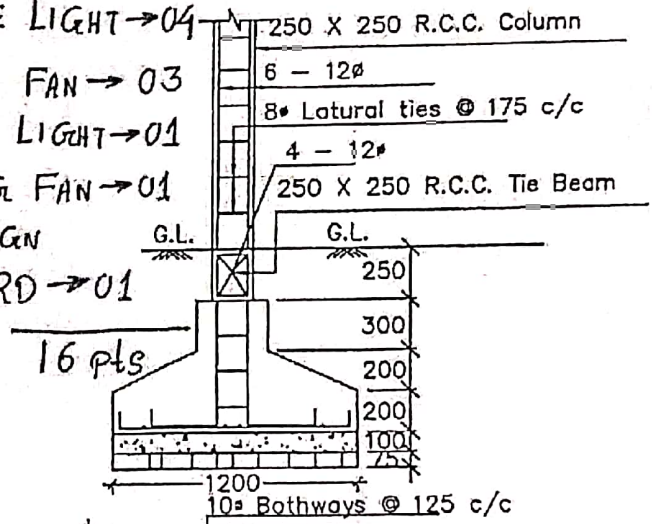
CEILING FAN → 01

GLOW SIGN

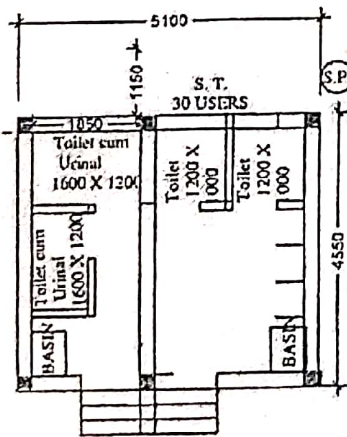
BOARD → 01



SECTION - 'A - A'



DETAILS OF R. C. C COLUMN
 (SCALE - 1 : 25)



Checked & Verified
Prabir Bhattacharya
 Engineer (CMI)
 HRI INSPIRATION



M. Ghosh
 Sub-Assistant Engineer
 Katwa Municipality

B. Pal
 Assistant Engineer
 Katwa Municipality

V. S.
 Chairman
 Katwa Municipality